

## SOLAR THAT WORKS IN THE SHADE.

Optivolt's Pulse™ technology delivers up to 60x more power in non-ideal conditions compared to conventional solar panels.



### BUILT FOR OFF-GRID

Designed for RVs, tiny homes, and portable battery generators



### ALL-CLIMATE PROTECTION

Pulse™ shade tolerance operates comfortably from -40°F to 149°F



### MILITARY-GRADE DURABILITY

Tempered glass provides shatter resistance from rocks, hail, and vandalism



### UNIVERSAL MOUNTING

Frame and mounting kit are compatible with Class A campers, toy haulers, and everything in-between



### GUARANTEED PERFORMANCE

10-year performance warranty



### ACCESSORIES

M19-MC4 ADAPTER

M19 T-JUNCTION

MOUNTING HARDWARE

VEHICLE INSTALL KIT



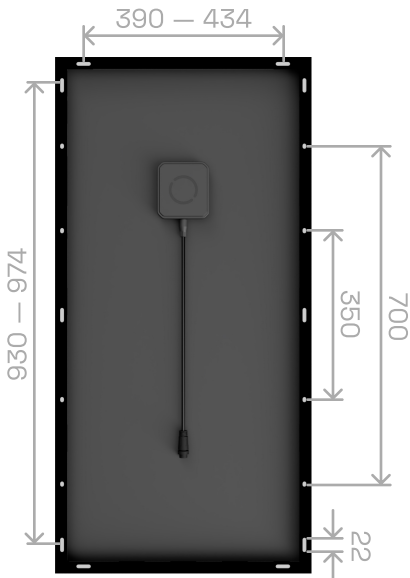
 ELECTRICAL

Shade tolerance	PULSE™ 6-ZONE		
Cell type	Monocrystalline M6		
Maximum system voltage	600 VDC		
Variants	STANDARD	HIGH-VOLTAGE	
Maximum panels per string	3 panels	6 panels	
Rated power	$P_{MP}$	106 W	106 W
Maximum power voltage	$V_{MP}$	20.7 V	41.4 V
Maximum power current	$I_{MP}$	5.12 A	2.56 A
Open circuit voltage	$V_{OC}$	23.6 V	47.2 V
Short circuit current	$I_{SC}$	5.6 A	2.8 A



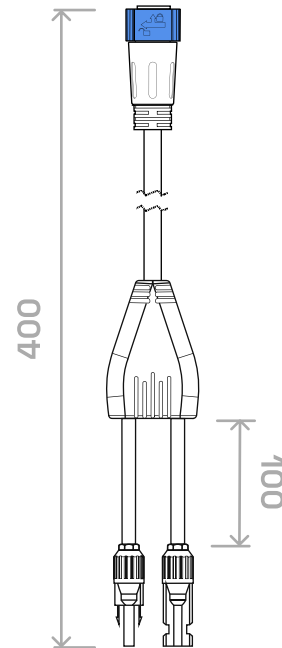
 MECHANICAL

Dimensions	1070 X 530 X 35 in 1070 X 530 X 35 mm		
Weight	14.4 lbs 6.5 kg		
Weather rating	IP65		
Operating temperature	-40 - 149°F -40 - 65°C		
Connector type	M19		
Output wire length	1.5 m		
Design	Black frame + backsheet		



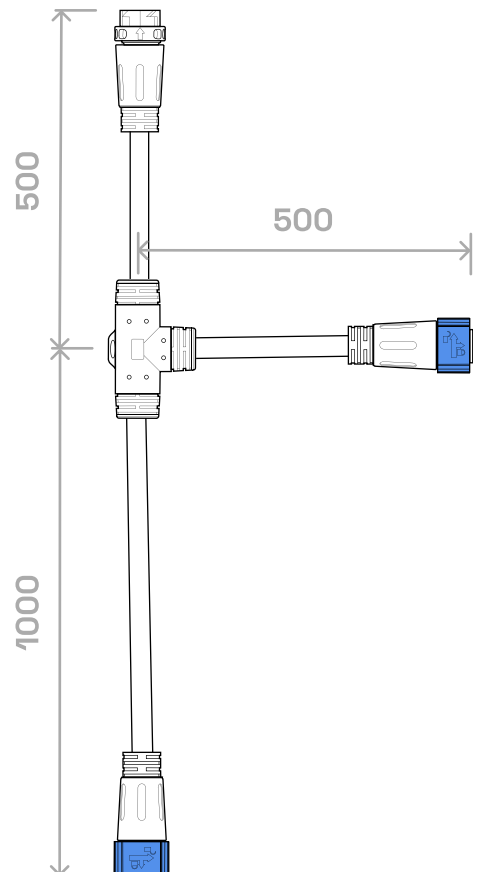
## M19-MC4 ADAPTER

Maximum current	20 A
Maximum system voltage	600 VDC
Input connector	M19 2-position, male
Output connector	MC4 pair
Weather rating	IP67
Operating temperature	-40 — 105°C -40 — 221°F
Overall length	400 mm



## M19 T-JUNCTION HARNESS

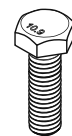
Maximum current	20 A
Maximum system voltage	600 VDC
Wire gauge	12/2 AWG
Input connectors	M19 2-position, male
Output connector	M19 2-position, female
Weather rating	IP67
Operating temperature	-40 — 105°C -40 — 221°F
Overall length	1.5 m
Short arm length	500 mm





## MOUNTING HARDWARE

M6 Hex head screw	A	M6-1.0 X 15 mm
M6 Flat washer	B	
M6 Split lock washer	C	
M6 Hex nut	D	M6-1.0
M6 T-Bolt	E	M6-1.0 X 20 mm
Self-tapping screw	F	
Length		38 mm
Head hex size		8 mm
Adhesive pad	G	20 X 30 mm
Z-bracket	H	
Slot dimensions		6.2 X 17 mm
Hole dimensions		6.2 mm
Hole spacing		80 mm



4x A



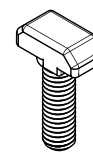
12x B



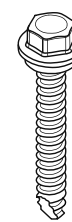
12x C



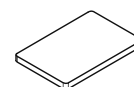
12x D



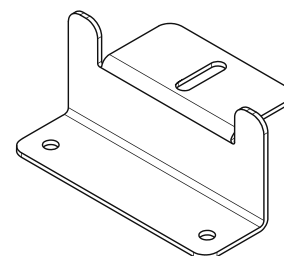
8x E



8x F



8x G



4x H

## VEHICLE INSTALL KIT

Dimensions	66 X 111 X 21 mm
Weather rating	IP65
Adhesive	3M 5952
Operating temperature	-40 — 221°F -40 — 105°C

