

Contents & Credits

Quick Facts

Location	West Lafayette, Ind.
Enrollment.....	40,090
Founded.....	1869
President.....	France A. Córdova
Provost.....	William R. "Randy" Woodson
Faculty Representatives	Jeffrey T. Bolin
.....	Christie L. Sahley
Athletics Director.....	Morgan J. Burke
Senior Associate Athletics Directors.....	Roger Blalock
.....	Nancy Cross (Senior Woman Admin)
Colors.....	Old Gold & Black
Nickname.....	Boilermakers
Conference.....	Big Ten
Arena.....	Holloway Gymnasium
Capacity	1,696

History & Records

First Year.....	1913-14
All-Time Dual Record	483-568-34
Big Ten Dual Record.....	187-405-25
Home Record*.....	105-116-2
Road Record*.....	101-136-8
Neutral Site Record*.....	113-54-1
Big Ten Titles.....	6
Big Ten Individual Titles.....	40
NCAA Championship Appearances.....	28
NCAA Individual Titles.....	4
All-Americans.....	50

* - match location incomplete prior to 1972-73

Staff

Head Coach.....	Scott Hinkel
Email.....	shinkel@purdue.edu
Office Phone.....	(765) 494-3219
Assistant Coach.....	Tom Erikson
Email.....	terikson@purdue.edu
Office Phone.....	(765) 494-0529
Assistant Coach.....	Glen Lanham
Email.....	glanham@purdue.edu
Office Phone.....	(765) 494-9137

Support Staff

Secretary	Viki Taylor
Email.....	vtaylor@purdue.edu
Office Phone	(765) 494-7417
Athletic Trainer.....	Craig Voll
Team Physicians.....	Greg Rowdon
.....	Alayne Sundstrom
Strength Coach.....	Jim Lathrop
Academic Services.....	Nicole McKinney
Promotions Director.....	Heather Hoesley
Ticket Manager.....	Charlie Roberts
Business Manager.....	Colleen Garrity
Equipment Manager.....	Marty Quinn

General Information

Media Information	2
2008-09 Schedule.....	3
2008-09 Roster Information.....	4-5
Professional Ties	6

Coaches & Staff

Head Coach Scott Hinkel.....	8-9
Assistant Coach Tom Erikson.....	10
Assistant Coach Glen Lanham.....	11
Volunteer Assistant Coach Chris Fleeger.....	12
Wrestling Support Staff.....	12
Athletics Director Morgan Burke.....	13
Athletic Administration.....	14

2008-09 Boilermakers

2008-09 Season Outlook.....	16-17
NCAA Qualifiers.....	18-31
Returning Starters	32-36
Returners.....	37-44
Newcomers	45-50

2008-09 Schedule & Opponents

Dual Opponents	52-55
Tournaments.....	56-60

2007-08 Review

Season Highlights	62-63
Dual Results.....	64-66
Statistics.....	67
Big Ten Recap.....	68
NCAA Championships.....	69-70

History & Records

National Champions.....	72-73
All-Americans.....	74-77
Big Ten Champions.....	78-79
Purdue Wrestlers of the Year.....	80
Honors & Awards.....	81
Year-By-Year Results.....	82-91
Series Records & Results.....	92-96
All-Time Letterwinners.....	98-101
Annual Starting Lineups.....	102-103
Purdue Record Books.....	104-105
100-Win Club.....	106
Building A Legacy	107-112

Purdue University

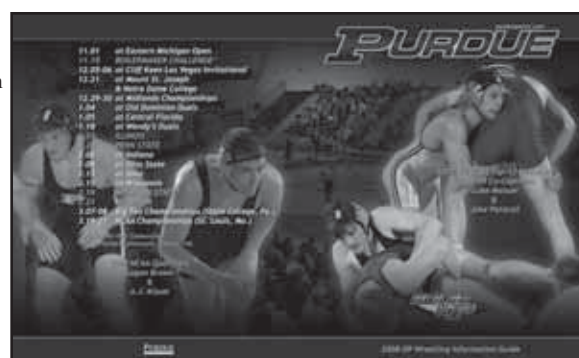
Purdue University	114-115
Lafayette/West Lafayette	116
Indiana.....	117
Academic Success.....	118-119
John Purdue Club.....	120
Distinguished Alumni.....	121
Big Ten Network & Conference	122-123
Spirit & Tradition.....	124-125
Speed, Strength & Conditioning.....	126
Athletic Training.....	127
Holloway Gym / Blake Wrestling Center.....	128

2008-2009 Purdue Wrestling Information Guide Credits

The 2008-2009 Purdue Wrestling Information Guide was produced by Purdue Sports Information

Editor: Tanner Lipsett
 Editorial Contributions: Tom Erikson, Scott Hinkel, Glen Lanham & Tom Schott
 Research Contributions: Jetney Shirley
 Photography: Purdue Photographic and Digital Imaging & Tanner Lipsett
 Cover Design: Tanner Lipsett & Mark Leddy
 Prepress Assistance: Mindy Irby
 Printing: Modern Graphics
 Price: \$8 (including tax)

On the Cover: 2008 NCAA Top-12 Finishers & 2008-2009 Co-Captains Jake Patacsil & Luke Manuel



Media Information

Purdue Sports Information Staff



Tom Schott

Assistant Athletics Director/
Sports Information Director
Phone.....(765) 494-3145
Emailtschott@purdue.edu
Football



Sara White

Associate Director
Phone.....(765) 494-6235
Emailsfwhite@purdue.edu
*Women's Basketball,
Women's Golf*



Mark Leddy

Assistant Director
Phone.....(765) 494-3201
Emailmleddy@purdue.edu
Men's Golf



Tanner Lipsett

Assistant Director
Phone.....(765) 494-3197
Emailtlipsett@purdue.edu
*Cross Country, Track & Field
Wrestling*



Wendy Mayer

Assistant Director
Phone.....(765) 494-3919
Email ... wabroker@purdue.edu
Volleyball, Softball



Matt Rector

Assistant Director
Phone.....(765) 494-3196
Emailrector@purdue.edu
Football, Baseball



Cory Palm

Web Media Specialist
Phone.....(765) 496-6528
Emailcpalm@purdue.edu



Charlie Henry

Interim Assistant Director
Phone.....(765) 494-3198
Emailcghenry@purdue.edu
*Women's Soccer, Tennis
Swimming & Diving*



Marcia Iles

Office Manager
Phone.....(765) 494-3202
Emailmdiles2@purdue.edu

WRESTLING CONTACT

Please contact Assistant Sports Information Director Tanner Lipsett regarding information about Purdue wrestling. He may be contacted via phone (765-494-3197) or e-mail (tlipsett@purdue.edu).

INTERVIEWS

All interviews with coaches and athletes must be arranged through Purdue's Sports Information Office. Please contact Tanner Lipsett with your requests, allowing at least 24 hours to coordinate the interview. Failure to adhere to the 24-hour notification guideline may hinder future interview requests.

CREDENTIALS

All credential requests (media and photo) should be forwarded to Tanner Lipsett. Credentials are limited to professionals working in the print or electronic media, and their issuance is at the discretion of the SID. On meet days, credentials will be left at the pass gate, located at the entrance to Holloway Gymnasium. Persons picking up credentials will be required to furnish identification upon request.

PRESS ROW

Purdue utilizes a press row located matside in the Holloway Gymnasium. Phone lines are available along press row for working media during meet action. Please contact Tanner Lipsett to make arrangements. For duals/tournaments that are held in Mackey Arena, an increased amount of lines are available for media, either matside or at additional media seating in the west bleachers.

RADIO

Visiting radio will be seated along press row and will have complimentary phone lines. There is room to seat two members of a crew comfortably. Please contact Tanner Lipsett to make arrangements no less than 72 hours prior to the scheduled competition.

MEDIA WORKROOM

At the conclusion of each home meet, reporters and photographers are invited to file their stories directly from Holloway Gymnasium via wireless internet or limited hard lines. For access to the secure wireless network please contact Tanner Lipsett. If space in Holloway Gymnasium is unavailable, space will be provided within the Sports Information Office in Mackey Arena (Room 15).

MEET DAY SERVICES

Meet programs, notes and information guides will be available to all members of the working media prior to the start of all home meets when available. Final printed results will be provided upon request. Upon completion of all competitions, head coach Scott Hinkel and any requested Purdue wrestlers will be available for interview. All post-meet interviews will be done at matside after a cool-down period. Please notify Tanner Lipsett or other working members of the Purdue Sports Information Office of any post-match needs.

MEET WEBCASTS

Purdue wrestling home matches will be webcast on Boilermaker All-Access, and will air live barring any scheduling conflict with the Big Ten Network. In the case of a scheduling conflict, the match will air via tape delay on Boilermaker All-Access. For information regarding Boilermaker All-Access Live Event subscription services, visit www.purduesports.com.

PRACTICE COVERAGE

Practices are open to the media with prior approval of sports information contact Tanner Lipsett. Please contact Tanner Lipsett for information regarding practice times, as well as to arrange pre- or postpractice interviews, allowing 24 hours to coordinate interviews. Failure to adhere to the 24-hour notification guideline may hinder future interview requests. All practices are held in the Blake Family Wrestling Training Center in Lambert Field House.

E-MAIL LIST

Any reporter(s) and media services which would like to receive Purdue wrestling news releases via e-mail should contact Tanner Lipsett at tlipsett@purdue.edu.

PURDUESPORTS.COM

Updated information on Purdue wrestling can be found on www.purduesports.com. This official Web site is refreshed daily with results, athlete features, game stories, box scores, game notes and statistics.

2008-09 Schedule

Purdue Boilermaker 2008-09 Wrestling Schedule

NOVEMBER

1	Eastern Michigan Open	Ypsilanti, Mich. (Bowen Field House)	All Day
15	Boilermaker Challenge	West Lafayette, Ind. (Lambert Field House)	10 a.m.

DECEMBER

5-6	Cliff Keen Las Vegas Invitational	Las Vegas, Nev. (L.V. Convention Center)	All Day
21	Mount St. Joseph Notre Dame College	Cincinnati, Ohio (Harrington Center) Cleveland, Ohio (Murphy Gymnasium)	12 p.m. 7:30 p.m.
29-30	Midlands Championships	Evanston, Ill. (Welsh-Ryan Arena)	All Day

JANUARY

4	Old Dominion Duals Old Dominion George Mason UNC-Greensboro	Norfolk, Vir. (ODU Field House)	All Day
5	Central Florida	Ft. Myers, Fla. (Ft. Myers High School)	8 p.m.
18	Wendy's Duals Ashland East Stroudsburg	Ashland, Ohio (Kates Gymnasium)	All Day
23	Illinois	West Lafayette, Ind. (Holloway Gymnasium)	2 p.m.
25	Penn State	West Lafayette, Ind. (Holloway Gymnasium)	7 p.m.

FEBRUARY

6	Indiana	Bloomington, Ind. (University Gymnasium)	7 p.m.
8	Ohio State	Columbus, Ohio (St. John Arena)	1 p.m.
13	Iowa	Iowa City, Iowa (Carver-Hawkeye Arena)	7 p.m.
15	Wisconsin	Madison, Wisc. (UW Field House)	1 p.m.
19	Michigan State	Elkhart, Ind. (Northside Gymnasium)	7 p.m.
21	Michigan	West Lafayette, Ind. (Holloway Gymnasium)	7 p.m.

MARCH

7-8	Big Ten Championships	State College, Pa. (Bryce Jordan Center)	All Day
19-21	NCAA Championships	St. Louis, Mo. (Scottrade Center)	All Day

2008-09 Big Ten Composite Schedule

Conference Duals Only

JANUARY

23	Illinois at Purdue Indiana at Penn St. Michigan St. at Northwestern Wisconsin at Iowa	West Lafayette, Ind. University Park, Pa. Evanston, Ill. Iowa City, Iowa
25	Illinois at Iowa Michigan St. at Minnesota Penn St. at Purdue Wisconsin at Northwestern	Iowa City, Iowa Minneapolis, Minn. West Lafayette, Ind. Evanston, Ill.
30	Indiana at Ohio St. Minnesota at Penn St. Wisconsin at Michigan St.	Columbus, Ohio University Park, Pa. East Lansing, Mich.
31	Northwestern at Michigan	Ann Arbor, Mich.

FEBRUARY

1	Indiana at Michigan Minnesota at Ohio St. Wisconsin at Penn St.	Ann Arbor, Mich. Columbus, Ohio University Park, Pa.
6	Iowa at Michigan St. Michigan at Minnesota Northwestern at Illinois Ohio St. at Penn St. Purdue at Indiana	East Lansing, Mich. Minneapolis, Minn. Champaign, Ill. University Park, Pa. Bloomington, Ind.
8	Illinois at Wisconsin Iowa at Penn St. Michigan at Michigan St. Northwestern at Minnesota Purdue at Ohio St.	Madison, Wis. University Park, Pa. East Lansing, Mich. Minneapolis, Minn. Columbus, Ohio
13	Indiana at Illinois Minnesota at Wisconsin Ohio State at Michigan Penn St. at Michigan St. Purdue at Iowa	Champaign, Ill. Madison, Wis. Ann Arbor, Mich. East Lansing, Mich. Iowa City, Iowa
14	Penn St. at Michigan	Ann Arbor, Mich.
15	Illinois at Ohio St. Minnesota at Iowa Northwestern at Indiana Purdue at Wisconsin	Columbus, Ohio Iowa City, Iowa Bloomington, Ind. Madison, Wis.
19	Michigan St. vs. Purdue	Elkhart, Ind.
20	Iowa at Indiana Michigan at Illinois Ohio St. at Northwestern	Bloomington, Ind. Champaign, Ill. Evanston, Ill.
21	Michigan at Purdue	West Lafayette, Ind.
22	Indiana at Minnesota Iowa at Northwestern Michigan St. at Illinois Ohio St. at Wisconsin	Minneapolis, Minn. Evanston, Ill. Champaign, Ill. Madison, Wis.

2008 NCAA Championships
St. Louis, Missouri
Scottrade Center



Back To The Arch Next March!

2008-09 Rosters

Alphabetical Roster

Student-Athlete	Weight	El./Cl.
Archuleta, Juan	141	Jr./Jr.
Augle, Mark	133	Fr./Fr.
Beebe, Carson	133	Fr./So.
Bertucci, Nick	157	Jr./Sr.
Brown, Logan	197	So./Jr.
Churchard, Tommy	133	Fr./Fr.
Corpe, Nick	174	Jr./Sr.
Cosgrove, Brennan	149	Fr./Fr.
Doyle, John	165	Fr./So.
Dziedzic, Mike	197	Fr./Fr.
Eren Akif	125	So./Jr.
Fields, Matt	125	Fr./So.
Flack, Jack	141	Fr./Fr.
Fleckenstein, Jake	133	Fr./So.
Fowler, Ben	157	Fr./Fr.
Fraga, Justin	165	Jr./Sr.
Handlovic, Kegan	125	Fr./Fr.
Hemry, Matt	141	So./Jr.
Ingram, David	149	So./So.
Kasten, Chris	285	Jr./Sr.
Kleinhenz, Orrin	184	So./So.
Manuel, Luke	165	So./Jr.
Manuel, Matt	133	Fr./Fr.
Martin, Jason	165	Jr./Sr.
Murphy, Jake	157	Sr./5th
Nettuno, Jordan	149	Jr./Sr.
Patacsil, Jake	149	Sr./5th
Patacsil, Sam	157	Jr./Sr.
Petrov, George	125	So./So.
Pisarcik, David	184	So./Jr.
Putman, Bill	125	Fr./So.
Redmond, Matt	149	Jr./Sr.
Salazar, Colton	157	So./Jr.
Succes, Marx	184	Fr./Fr.
Von Letschler, Gabe	133	Fr./Fr.
Vukobratovich, Roger	285	So./Jr.

Pronunciation Guide

Juan Archuleta..... R - choo - LET - ah
Mark Augle AW - gull
Nick Bertucci ber - TOOCH - ee
Tommy Churchard cher - CHAR - duh
Nick Corpe CORP
Mike Dziedzic JEH - jeets
Akif Eren ah - KEY - ff / err - EN
Jake Fleckenstein FLECK - en - STY - nuh
Justin Fraga FRAH - gah
Kegan Handlovic KAY - gen / HAND - low - VIC
Chris Kasten CAST - en
Orrin Kleinhenz OR - en / KLINE - hens
Luke/Matt Manuel MAN - you'll
Jordan Nettuno NET - too - NO
Jake/Sam Patacsil puh - TACK - sill
George Petrov PET - rawvuh
David Pisarcik pis - R - sick
Colton Salazar SAHL - ah - ZAR
Marx Succes MARKS / success
Gabe Von Letschler Von Letcher
Roger Vukobratovich voo - CO - braht - O - vich

Coaches

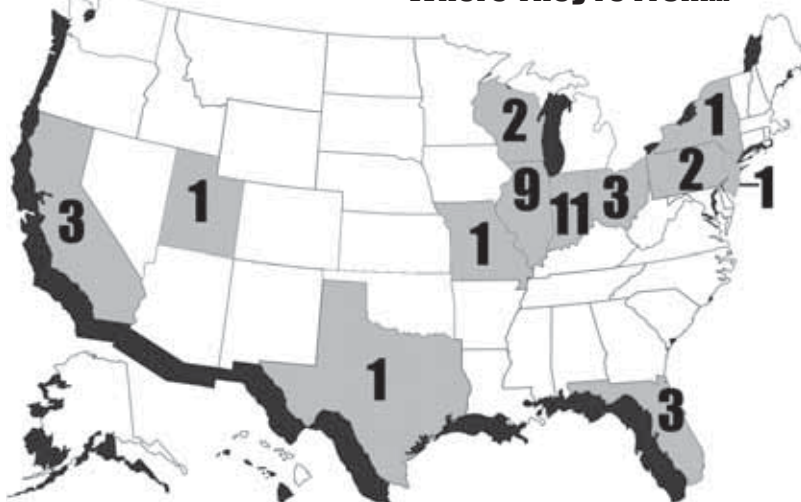
Scott Hinkel HINK - uhl
Glen Lanham..... LAN - um

Weight Class Roster

Wt.	Student-Athlete	El./Cl.	Ht.	Hometown (High School)
125	Akif Eren [#] Matt Fields Kegan Handlovic George Petrov Bill Putman	So./Jr. Fr./So. Fr./Fr. So./So. Fr./So.	5-4 5-8 5-3 5-6 5-6	Perrysburg, Ohio (Perrysburg) Whiteland, Ind. (Whiteland) Easton, Pa. (Easton) Cedar Lake, Ind. (Hanover Central) Oak Lawn, Ill. (Marist)
133	Mark Augle Carson Beebe Tommy Churchard Jake Fleckenstein Manuel, Matt Gabe Von Letschler	Fr./Fr. Fr./So. Fr./Fr. Fr./So. Fr./Fr. Fr./Fr.	5-6 5-7 5-10 5-7 5-5 5-5	Tinley Park, Ill. (Providence Catholic) Western Springs, Ill. (Lombard Montini) Valparaiso, Ind. (Valparaiso) Guildford, Ind. (East Central) Nevada City, Calif. (Nevada Union) Austin, Tex. (McCallum)
141	Juan Archuleta Jack Flack Matt Hemry	Jr./Jr. Fr./Fr. So./Jr.	5-8 5-8 5-6	Hesperia, Calif. (Sultana) Port Washington, Wis. (Port Washington) Portage, Ind. (Portage)
149	Brennan Cosgrove David Ingram Jordan Nettuno Jake Patacsil ^{#Q} Matt Redmond	Fr./Fr. So./So. Jr./Sr. Sr./5th Jr./Sr.	5-11 5-11 5-8 5-9 5-9	Hobart, Ind. (Hobart) East Islip, N.Y. (East Islip) Flemington, N.J. (Hunderton Central Regional) Sunrise, Fla. (St. Thomas Aquinas) Wheaton, Ill. (North Wheaton)
157	Nick Bertucci [#] Ben Fowler Jake Murphy ^Q Sam Patacsil Colton Salazar	Jr./Sr. Fr./Fr. Sr./5th Jr./Sr. So./Jr.	5-11 5-10 5-9 5-11 5-9	Berwyn, Ill. (Fenwick) High Ridge, Mo. (Northwest R-I) Chicago Heights, Ill. (Marist) Sunrise, Fla. (St. Thomas Aquinas) Midway, Utah (Wasatch)
165	John Doyle Justin Fraga ^Q Luke Manuel ^{#Q} Jason Martin	Fr./So. Jr./Sr. So./Jr. Jr./Sr.	5-9 5-10 5-10 5-8	Orland Park, Ill. (Carl Sandburg) Altamonte Springs, Fla. (Oviedo) Nevada City, Calif. (Nevada Union) Williamsburg, Ind. (Randolph Southern)
174	Nick Corpe [#]	Jr./Sr.	5-8	Granger, Ind. (Elkhart Memorial)
184	A.J. Kissel ^{#Q} Orrin Kleinhenz David Pisarcik Marx Succes	So./So. So./So. So./Jr. Fr./Fr.	6-2 5-10 6-1 5-8	Sheboygan, Wis. (Oostburg) Columbus, Ind. (Columbus North) Valencia, Pa. (Mars) Evanston, Ill. (Evanston Township)
197	Logan Brown ^{#Q} Mike Dziedzic	So./Jr. Fr./Fr.	6-0 6-0	Bradford, Ohio (Covington) Roselle, Ill. (Lake Park)
285	Chris Kasten [#] Roger Vukobratovich	Jr./Sr. So./Jr.	6-1 6-3	Winamac, Ind. (Winamac Community) Cedar Lake, Ind. (Hanover Central)

- starter in 2007-08
Q - Prior NCAA Qualifier

Where They're From...



2008-09 Rosters

Photo Roster



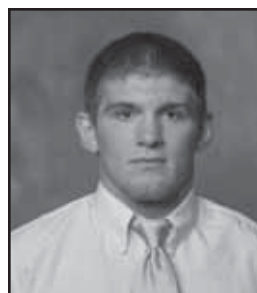
Juan Archuleta - Jr. - 141
(R-choo-LET-ah)



Carson Beebe - RS-Fr. - 133
(BEE - bee)



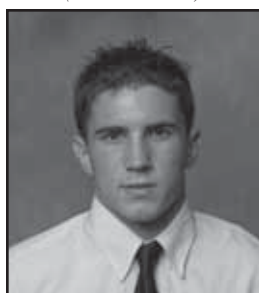
Nick Bertucci - RS-Jr. - 157
(ber - TOOCH - ee)



Logan Brown - RS-So. - 197



Nick Corpe - RS-Jr. - 174
(CORP)



John Doyle - RS-Fr. - 165



Akif Eren - RS-So. - 125
(ah - KEY - ff / err - EN)



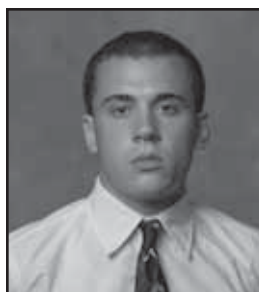
Matt Fields - RS-Fr. - 125



Jake Fleckenstein - RS-Fr. - 133
(FLECK - en - STY - nuh)



Justin Fraga - RS-Jr. - 165
(FRAH - gah)



Kegan Handlovic - Fr. - 125
(KAY - gen / HAND - low - VIC)



Matt Hemry - RS-So. - 141



David Ingram - So. - 149



Chris Kasten - RS-Jr. - 285
(CAST - en)



A.J. Kissel - So. - 184
(KISS - uhl)



Luke Manuel - RS-So. - 165
(MAN - you'll)



Jason Martin - RS-Jr. - 165



Jake Murphy - RS-Sr. - 157



Jordan Nettuno - RS-Jr. - 149
(NET - too - NO)



Jake Patacsil - RS-Sr. - 149
(puh - TACK - sill)



Sam Patacsil - RS-Jr. - 157
(puh - TACK - sill)



David Pisarcik - RS-So. - 184
(pis - R - sick)



Matt Redmond - RS-Jr. - 149



Colton Salazar - RS-So. - 157
(SAHL - ah - zar)



Roger Vukobratovich - RS-So. - 285
(voo - CO - braht - O - vich)

Professional Ties

With the sport of wrestling growing and now overlapping into other professional combat sports, the Purdue University wrestling program has made some solid contributions into the international wrestling and mixed martial arts (MMA) world. With competitions all over Europe, Asia and the United States, Boilermakers have earned the opportunity to see the world through their combative talents. Highlighting the list of Purdue ties to the professional fighting world is assistant coach Tom Erikson, Jon Fitch, Jake O'Brien and Chase Beebe. Other Boilermaker names in the MMA circuits include Nate Moore, Matt Hamill, Jeremy Bibelauser, and Davion Peterson. Purdue head coach Scott Hinkel said, "It's great to see that we have provided some of these young men with a wrestling background that has allowed them to succeed at a professional level of combat. The attention given to MMA is growing by the day, and to see former Purdue athletes make their mark in that world is great for our program."

Assistant Coach Tom Erikson

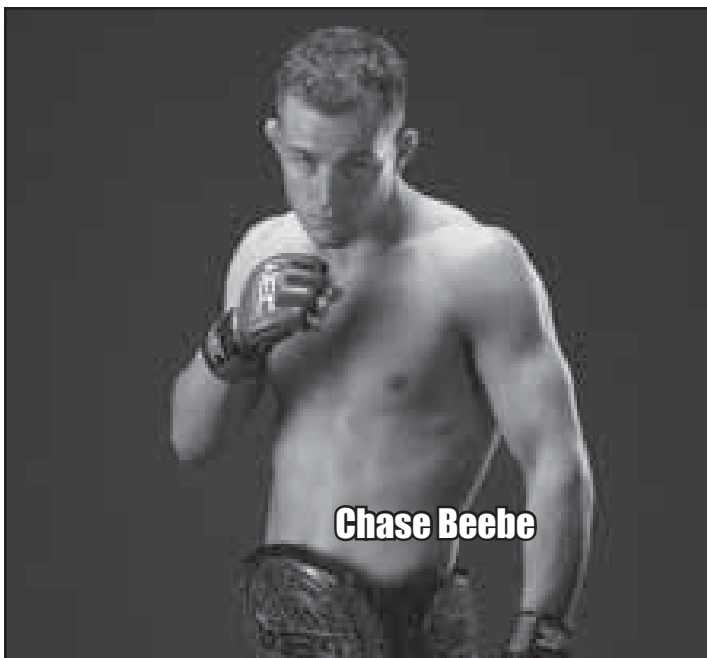
Ninth-year assistant coach Tom Erikson has an extensive list of fighting and coaching credentials in the MMA world, competing in several organizations including Pride Fighting Championships, K-1, World Fighting Federation and Martial Arts Reality Superfighting. Along with his career 9-4-1 record, Erikson has also mentored several MMA superstars, including current UFC heavyweight champion Randy Couture, UFC 8 Champion Don Frye, and Gary Goodrich. Erikson was a two-time NCAA All-American at Oklahoma State University and competed internationally in freestyle wrestling post-collegiately.

Jon Fitch

Four-year Purdue letterwinner Jon Fitch is becoming a widely-known name in the world of MMA and the Ultimate Fighting Championship (UFC). Regarded as one of the top 170-pound fighters in the world, Fitch boasts a 21-3-0 (one no-contest) MMA record and has won 15 of his last 16 fights, including a span of eight in a row in the UFC. Fitch graduated from Purdue in 2002 with a Bachelor of Science in physical education and a minor in history. He was a 2002 captain with the Boilermakers and earned 2002 Purdue wrestling most dedicated honors. Fitch trains at the American Kickboxing Academy in San Jose, Calif., along with 2007 graduate Nate Moore and UFC standouts Josh Koscheck and Mike Swick.



Jon Fitch



Chase Beebe

Jake O'Brien

Jake O'Brien earned a varsity letter at Purdue in 2005 as the Boilermakers' starting heavyweight. Since then he has built an outstanding 10-2 record as a professional MMA heavyweight, including solid upset victory over Heath Herring in a UFC showcase on national television. O'Brien fights out of the Integrated Fighting Academy in Indianapolis, Ind., where he trains alongside UFC welterweight standout Chris Lytle.

Chase Beebe

Beebe wrestled for the Old Gold and Black in 2003-04, earning a varsity letter at 133 pounds. He owns a 11-3 record in the bantamweight division (135 pounds), and is a former World Extreme Cagefighting Champion in the division. Beebe trains and fights out of Chicago, and his younger brother (Carson) recently joined the Boilermakers', transferring from Central Michigan University.

ALL RECORDS ARE CURRENT AS OF TIME OF PUBLICATION