

PURDUE QUICK FACTS**UNIVERSITY INFO**

Location: West Lafayette, Ind. Founded: 1869
 Conference: Big Ten Enrollment: 52,211
 Colors: Old Gold & Black Nickname: Boilermakers
 President: Dr. Mung Chiang Athletics Director: Mike Bobinski
 Deputy A.D. / Senior Woman Administrator: Tiffini Grimes

COMMUNICATIONS CONTACT

Ian MacDougall - Associate Director (WBB Contact)
 Email - imacdoug@purdue.edu | Cell - 317.313.7486 | Office - 765.494.0529

PROGRAM HISTORY

First Season - 1975-76 (49th Season)
 All-Time Record - 924-540 All-Time Big Ten Record - 429-270
 Home Record - 492-177 Home Big Ten Record - 245-105
 Away Record - 290-275 Away Big Ten Record - 290-273
 Neutral Site Record - 142-89

POSTSEASON HISTORY

NCAA Championships - **1999** (Only one by a Big Ten program)
 Final Fours - **3** (1994-99-2001)
 Sweet 16 - **12** (1990-92-94-95-98-99-01-03-04-06-07-09)
 NCAA Appearances - **27** (1989-90-91-92-94-95-96-97-98-99-00-01-02-03-04-05-06-07-08-09-11-12-13-14-16-17-23)
 All-Time NCAA Tournament Record - **47-26**
 WNIT/WNIT Appearances - **4** (1988-10-18-22)
 Big Ten Regular Season Titles - **7** (1991-94-95-97-99-01-02)
 Big Ten Tournament Titles - **9** (1998-99-00-03-04-07-08-12-13)

MACKEY ARENA

Broke Ground: **July 1965** | First Game: **Dec. 2, 1967** | Capacity: **14,876**
 First Women's Game: **Dec. 2, 1975** | **Purdue 78, Illinois 74**
 Gearlds Overall: **21-10** | Non-Con: **13-1** | BIG: **8-9**
 Purdue Overall: **491-176** | Non-Con: **246-71** | BIG: **245-105**
 Home Wins vs. Ranked Teams: **5**

LARGEST CROWDS OF KG ERA

| Attendance | Date | Opponent | Result |
|------------|----------|---------------|---------------|
| 14,876 | 2/5/23 | No. 4 Indiana | L, 69-46 |
| 8,005 | 1/16/22 | No. 5 Indiana | L, 73-78 (OT) |
| 5,457 | 12/21/21 | North Alabama | W, 86-53 |
| 5,223 | 11/16/23 | Texas A&M | W, 72-58 |
| 5,003 | 11/12/23 | Southern | W, 67-50 |

LAST TIME OUT**PURDUE 57, GEORGIA 65**

- After trailing by just two at the end of the third quarter, an early slump in the fourth sent the Boilermakers to a 65-57 loss to Georgia on Wednesday in The Bahamas.
- Madison Layden connected on a quartet of 3-pointers to pace the Boilermakers with 14 points.
- Rashunda Jones chipped in 10 points off the bench.
- Georgia pulled away with 20 points off 17 Purdue turnovers and 19 points on 18 offensive rebounds.

STARTING LINEUPS

| Lineup (Record) | Games |
|--|-------|
| 1. Smith, Terry, Ellis, Layden, Harper (0-1) | 1 |
| 2. Terry, Stevenson, Ellis, Layden, Harper (2-2) | 2-5 |

| Player | 19/20 | 21 | 22 | 23 | 24 | Total | Record [^] |
|----------------|-------|-----|-----|----|----|-------|---------------------|
| 1 Reynolds | - | - | - | - | | | |
| 2 Jones | - | - | - | - | | | |
| 3 Smith | - | - | 1 | 3 | 1 | 5 | 1-4 |
| 10 Terry | -/11* | 23* | 32 | 30 | 5 | 101* | 37-30 |
| 11 Layden | - | - | - | - | | | |
| 15 Reynolds | - | - | - | - | | | |
| 21 Monson | - | - | - | - | | | |
| 20 Stevenson | - | - | - | - | 4 | 6 | 2-2 |
| 23 Ellis | -/29* | 23* | 31 | 18 | 5 | 106* | 30-24 |
| 31 Swanson | - | - | - | - | | | |
| 32 Harper | - | - | - | 2 | | 2* | |
| 33 Layden | - | 21 | 28 | 13 | 5 | 67 | 33-34 |
| 34 Harper | 3*/5* | 10* | 32* | 29 | 5 | 84* | 20-14 |

* Includes starts at previous school | ^ Record at Purdue

BOILER NOTES**BOILERMAKER BASKETBALL**

- Purdue Women's Basketball is in its 49th season in 2023-24.
- Purdue was the 40th program in NCAA Division I history to reach 900 wins.
- The Boilermakers are the only team from the Big Ten to win a national championship, hoisting the title in 1999.
- The program has reached the NCAA Tournament 27 times with 12 Sweet 16s, eight Elite 8s, three final fours and a trio of national championship game appearances.
- In addition to its NCAA success, Purdue owns the Big Ten record for most tournament titles with nine.

THIRD SEASON OF THE KG ERA

- Head coach Katie Gearlds is in her third season at her alma mater after guiding the Boilermakers to back-to-back postseason appearances, including the first NCAA Tournament appearance since 2017.
- In two short seasons, Gearlds has transformed Purdue back into an NCAA Tournament squad with eyes on taking the Boilermakers back to the nation spotlight when she was on the floor 20 years ago.
- Gearlds took over the program 47 days before her first campaign in 2021-22 when Purdue was coming off a seven-win season. She guided Purdue to a 17-15 mark and reached the WNIT after the program failed to reach the postseason in the previous three years.
- Purdue finished the 2022-23 season with a 19-11 record and its first return to the NCAA Tournament since 2017.
- Gearlds joined Boilermaker legends Carolyn Peck and Lin Dunn as the only Purdue head coaches to post win improvements in each of their first two seasons.
- When Gearlds moved into the head coach role, Purdue had lost 19 straight games to ranked opponents. Over her first two years, Gearlds has racked up three ranked wins, including the program's first true road AP top-5 victory against No. 2 Ohio State in 2022-23.
- Gearlds was initially hired as the associate head coach with plans to become the head coach at the start of the 2022-23 season.

WAIT, HOW MANY SISTERS ARE ON THIS TEAM?

- If a team is a family, Purdue is taking that to a whole new level with three sets of siblings on the 2023-24 roster - Madison & McKenna Layden, Mila & Amiyah Reynolds, Caitlyn & Alaina Harper.
- The Boilermakers are the only team in the nation with three sets of sisters. Utah Tech is the only other program with more than one pair of siblings.
- Based on the tireless research of a communications intern, 39 teams across Division I have one pair of sisters of the roster this year.
- McKenna and Madison Layden became the first Boilermakers to play on the floor together in program history, playing 6:29 together in the season opener at UCLA.
- Alaina Harper and Caitlyn Harper were the second set of siblings to play in the same game at Purdue, when Alaina checked in for her big sister in the fourth quarter against UCLA.

NON-CONFERENCE DOMINANCE

- Purdue has an 20-6 regular season non-conference mark under Gearlds.
- The 18 wins in non-conference regular season action in her first two seasons tied for third in the Big Ten.
- Last season, the Boilermakers went 9-1 for the third-best clip in program history and the best since Gearlds' freshman season in 2003-04.
- Purdue went 9-2 in regular season non-conference action during Gearlds' first campaign, which tied for the second best mark by a first-year head coach at Purdue.

FRESHMAN OUTPUT

- With six freshmen on the roster, five active, the rookie class for the Boilermakers have quickly made an impact in West Lafayette.
- Purdue is the only team in the Big Ten with two freshmen averaging over 8.0 points and 3.0 rebound per game - Stevenson (8.0 ppg, 3.8 rpg) and Jones (8.4 ppg, 3.0 rpg) - through the first five games of the year.
- Mary Ashley Stevenson jumped into the starting lineup for the first time in her career against Southern, tallying 13 points, all in the second half. Stevenson is second on the team with 10.5 points per game.
- Stevenson (8 pts, 2 rebs, 1 stl, 1 blk, 1 ast) became the first Boilermaker rookie to go for at least five points and one rebound, assist, steal and a block since Sam Ostarello in 2009.
- Rashunda Jones scored 20 points against Texas A&M, the first 20-point game by a Purdue rookie since 2017-18.
- Jones and McKenna Layden have emerged as the first subs off the bench, averaging 19.3 and 14.2 minutes per game, respectively.
- Emily Monson, while seeing fewer minutes, has been effective in her time on the court with a 3-pointer.
- Sophie Swanson is nearing her debut, coming off a knee injury that ended her high school career.

BEST FRESHMAN OUTINGS

| Stat | Combined | Leader |
|------------|-------------------|---------------------------|
| Points | 22, vs. Texas A&M | 20, Jones vs. Texas A&M |
| 3-Pointers | 2, at UCLA | 1, 3 times |
| Rebounds | 12, 2 times | 6, Stevenson vs. Florida |
| Assists | 3, vs. Southern | 2, 2 times |
| Steals | 3, at UCLA | 1, 7 times |
| Blocks | 2, vs. Southern | 1, 3 times |
| Minutes | 64, vs. Southern | 32, Stevenson vs. Georgia |

TOUGH SLATE TO START

- Purdue's schedule featured four major conference teams in its first five outings this season, going 2-3 in those games.
- The five-game start was ranked the 12th hardest schedule by Massey Ratings.
- After the road battle at No. 4 UCLA, which was the first ranked season-opening contest for Purdue since 2003-04, the Boilermakers downed Texas A&M 72-58 on Nov. 16.
- Purdue dropped back-to-back games against Florida and Georgia in the Baha Mar Pink Flamingo Championship in Nassau, The Bahamas.
- The Boilermakers will travel to Notre Dame on Dec. 17 for the first regular season matchup with the Fighting Irish in over a decade.
- Purdue plays eight games against teams ranked in the initial AP Top-25, including seven against teams in the top 14.

HARPER HITTING HER STRIDE

- In her sixth year of college basketball, Caitlyn Harper might be in the best shape of her life with a five of performances that topped 30 minutes. She bested 30 minutes just thrice last year.
- Harper scored in double figures in five outings, sitting second on the team with 10.6 points per game.
- The Hartland, Wis., native is shooting at a 52.5% clip and ranks second on the team with five 3-pointers.

ELITE ELLIS

- Abbey Ellis is her final campaign in West Lafayette after honorable mention All-Big Ten nods each of the last two years.
- The Australian leads the team in scoring with 13.8 points per game and has reached double figures in all five games.
- Ellis is fourth in the Big Ten with a 90% mark at the line (18-20).
- Ellis paired with Rashunda Jones to become the first Boilermaker duo to score 20 points in a game since 2019-20 when they both scored 20 against Texas A&M.

BOILER NOTES**EARLY ATTENDANCE RETURNS**

- Head coach Katie Gearlds continues to bring the magic back to Mackey Arena, as more fans come through the turnstiles.
- Purdue's first two games topped 5,000 fans to rank in the top-five best attended games of the Gearlds era.
- Purdue set the program attendance record against Indiana last season with a sellout of 14,876.
- Going into the 2023-24 season, Purdue had sold its most season tickets since 2012-13.

JT - START UNKNOWN, FINISH UNFORGETTABLE

- "Start Unknown, Finish Unforgettable" is the mantra Jeanae Terry lives by so much she has a tattoo featuring that phrase.
- During her time in West Lafayette, Terry has set the program record for triple-doubles and non-point double-doubles.
- Terry passed Katie Gearlds for 13th on the program's all-time assist list, reaching her 400th helper at Purdue against Georgia.
- Last season, she was one of three players (Iowa's Caitlin Clark and Notre Dame's Olivia Miles) to record at least 6.0 points, rebounds and assists per game.
- Terry and Clark are the only two players in the nation to dish out 150 assists and haul in 200 rebounds in each of the last two years.
- Terry holds the second and third spots on the single-season assist lists, as well as the program's lead for career assist-to-turnover ratio.
- Terry and Purdue legend Carol Emanuel are the only Boilermakers to lead the team in rebounds and assists in two seasons.
- Terry has started all 67 games at Purdue and made her 100th career start against Florida.

THE NAME IS MARY ASHLEY STEVENSON

- Mary Ashley Stevenson looks to be a force her first season in West Lafayette, joining the starting lineup in her second career game.
- In her college debut at UCLA, she finished with eight points, two rebounds one assist, one steal and one block in 27 minutes in the season opener at No. 4 UCLA, becoming the first Purdue rookie since Sam Ostarello in 2009 to record at least five points and one block, rebound, assist and steal in the first game of the year.
- Coming straight from the Big Apple, Stevenson joined Purdue after an impressive prep career.
- Stevenson was an McDonald's All-America Game nominee, the runner-up for New York Miss Basketball and Gatorade Player of the Year, as well as the No. 97 recruit by ESPN.
- She won three state championships, two in New York and one in South Carolina. Stevenson tallied an 80-12 record over four years of high school and finished her career with 2,552 points and 1,575 rebounds in 125 career games.
- Stevenson set The Dalton School record for boys or girls with 53 points in a 75-70 win over Staten Island Academy on Feb. 1, 2023, scoring her team's final 31 points.
- Before she stepped on campus, she legally changed her last name from Groot to Stevenson, taking the name of her stepfather Gary.

THE SPIDER - RASHUNDA JONES

- Rashunda Jones was the first South Bend Washington commit before the Reynolds sisters joined to reunite the powerful trio.
- The South Bend native was the first Boilermaker freshman since Karissa McLaughlin in 2017-18 to score 20 points in a game, after dropping a career-high 20 points against Texas A&M.
- Jones was tabbed the 2023 Indiana Miss Basketball and a member of the Max Preps National Player of the Year Watch List.
- She guided the Panthers to a 95-18 record in her career and a 2022 IHSAA 3A Championship and three conference titles.
- Her versatility earned her the nickname "Spider" from her high school head coach and Amiyah & Mila's father - Steven.
- She finished her career with 1,791 points, 497 rebounds, 427 assists and 419 steals, including an assist on Amiyah Reynolds' 1,000th career point.

NUMBERS TO KNOW IN THE GEARLDS ERA

- Purdue is 31-5 when leading after the first quarter and 35-5 when taking a lead into the fourth quarter.
- Purdue is 22-14 when knocking down seven or more 3-pointers.
- Purdue is 14-9 when shooting 35% from distance or better and 30-9 when shooting 40% or better overall, including 13-1 with a field goal clip above 50%.
- The Boilermakers are 24-4 when outrebounding opponents.
- The Boilermakers hold a 26-3 record when scoring 70 or more points, while also posting a 33-8 mark when holding opponents below that mark.

MILESTONE WATCH

- Abbey Ellis is 238 points away from joining the 1,000-point club at Purdue. The Australian already has over 1,500 points in her career.
- Caitlyn Harper is 10 3-pointers away from 100 in her career.
- Madison Layden needs 240 points to join the 1,000-point club. She also needs three 3-pointers to reach 150 for her career.
- Jayla Smith is 109 points away from 500 for her career.
- The Detroit native needs 230 rebounds for 1,000 in her career and 22 to reach 500 during her time at Purdue.
- Terry is 100 assists away from 500 during her time in West Lafayette, which would make her the seventh player in program history to hit that mark.

DOWN UNDER DOWNTOWN ABBEY

- Abbey Ellis is her final campaign in West Lafayette after honorable mention All-Big Ten nods each of the last two years.
- Ellis was one of the most clutch free throw shooters in the country last season finishing third nationally at 91.7% while leading the Big Ten overall.
- Ellis is one of Purdue's go-to options in tight situations averaging 11.5 points per game during her time in West Lafayette with a 45.9% clip from the field and 33.3% from behind the arc.
- She joined the 1,500-point club for her career last season.
- In the Big Ten Tournament quarterfinals against Iowa last year, Ellis made her 100th career start.
- She earned a spot on the Big Ten Honor Roll with 21 points and four rebounds per game, while shooting 60% overall and 58% from three in the wins over No. 22 Illinois and No. 2 Ohio State last year.
- Purdue's first Australian rocks a ribbon in her hair during games from a selection that her mother sends her to wear.
- The senior has also gained a following on TikTok @abbey_22 with videos shared by BarstoolSports, Slam and more.

MONEY MAD\$

- Senior Madison Layden is in her fourth campaign as one of the top all-around producers for the Boilermakers.
- She opened her home campaign with a career-high 21 points against Southern on 5-of-6 shooting with four triples.
- A scorer, shooter, facilitator, rebounder and defender, Layden was one of 12 players in the Big Ten last season to tally six points, four rebounds, three assists and one steal per game.
- Layden has climbed up to 14th in program history in career triples.
- She set the single-game Purdue freshman record for triples in a game with six triples in a game.
- She was tabbed All-Big Ten honorable mention as a sophomore and named to the All-Freshman team in 2020-21.

THE ROOKIE SIX

- Purdue's roster features six freshmen in 2023-24.
- The group of rookies was the first fully recruited class of the Katie Gearlds and were all targets by her less than a month after she was hired in 2021.
- Emily Monson, McKenna Layden, Sophie Swanson, Rashunda Jones and Mary Ashley Stevenson signed in November of 2022 and were tabbed the No. 21 recruiting class by ESPN.
- No. 43 prospect Amiyah Reynolds joined the squad when she committed in May.

25 YEARS FOR THE CHAMPS

Record - 34-1, 16-0 Big Ten

Big Ten Finish - 1st Place

Big Ten Tournament - Champions

Championship Game

Purdue 62, Duke 45 (Ukari Figgs 18 pts)

Season Honors

USBWA All-America - Stephanie White

AP & WBCA All-America - Stephanie White, Ukari Figgs

Honda Award & Wade Trophy - Stephanie White

Big Ten Player of the Year - Stephanie White

NCAA Tournament Most Outstanding Player - Ukari Figgs

All-Tournament Team - Ukari Figgs, Stephanie White, Katie Douglas

AP & Naismith National Coach of the Year - Carolyn Peck



Purdue celebrates the 25th anniversary of its 1999 National Championship, the only one in the Big Ten in women's basketball. Led by National Coach of the Year Carolyn Peck and a star-studded list of greats in Stephanie White, Ukari Figgs, Camille Cooper, Katie Douglas, Michelle Duhart and Kelly Komara, the Boilermakers knocked off 10 ranked opponents, including No. 1 Tennessee in the season opener.

After posting a perfect 16-0 record in Big Ten play and winning the league tournament, Purdue carved through the NCAA Tournament as a No. 1 seed, before defeating Duke 62-45 in the National Championship Game.

INDIANA MISS BASKETBALL

- Jayla Smith is the 10th Indiana Miss Basketball to play at Purdue, winning the award in 2021.
 - The long history of Purdue welcoming the state's top player extended back to 2003, when Katie Gearlds became the fifth honoree to pick West Lafayette.
 - Madison Layden (2020) and Rashunda Jones (2023) finished as runner-ups in their senior campaigns.
 - Purdue holds the record for most Indiana Miss Basketball winners, followed by Indiana, Notre Dame, Tennessee tied for second with four.
- | | |
|------------------------------------|----------------------------------|
| 1984 Sharon Versyp, Mishawaka | 1991 Jennifer Jacoby, Rossville |
| 1995 Stephanie White, Seeger | 1998 Kelly Komara, Lake Central |
| 2003 Katie Gearlds, Beech Grove | 2005 Jodi Howell, Alexandria |
| 2008 Brittany Rayburn, Attica | 2010 Courtney Moses, Oak Hill |
| 2017 Karissa McLaughlin, Homestead | 2021 Jayla Smith, Lawrence North |

RANDOM ODDS AND ENDS

| | Consecutive Made | Straight Games | Consecutive |
|----------------|------------------|----------------|-------------|
| Name | Free Throws | with a Three | Starts |
| 1 - Reynolds | - | - | - |
| 2 - Jones | 7 | - | - |
| 3 - Smith | 1 | - | - |
| 10 - Terry | - | - | 101* |
| 11 - Layden | 1 | - | - |
| 15 - Reynolds | - | - | - |
| 20 - Stevenson | 4 | - | 4 |
| 21 - Monson | 1 | - | - |
| 23 - Ellis | 10 | 4 | 20 |
| 31 - Swanson | - | - | - |
| 32 - Harper | - | - | - |
| 33 - Layden | 2 | 1 | 5 |
| 34 - Harper | 18 | 1 | 9 |

| Opening Tips | | Won-Lost | | Record in Games | |
|-----------------------|--|----------|---|-----------------|-----------------|
| Jayla Smith | | 0-1 | | 0-1 | |
| Mary Ashley Stevenson | | 2-2 | | 2-2 | |
| Scoring First | | 2 | 3 | FT | Record in Games |
| Abbey Ellis | | 4 | | | 2-2 |
| Mary Ashley Stevenson | | 1 | | | 0-1 |

BIG TEN STANDINGS

| | Big Ten | Overall | Streak |
|----------------|---------|---------|--------|
| Michigan State | 0-0 | 4-0 | W4 |
| Penn State | 0-0 | 5-1 | L1 |
| Iowa | 0-0 | 4-1 | W1 |
| Michigan | 0-0 | 4-1 | L1 |
| Minnesota | 0-0 | 4-1 | W1 |
| Nebraska | 0-0 | 4-1 | W1 |
| Ohio State | 0-0 | 4-1 | W4 |
| Indiana | 0-0 | 3-1 | W2 |
| Wisconsin | 0-0 | 3-1 | L1 |
| Northwestern | 0-0 | 3-2 | L1 |
| Illinois | 0-0 | 2-2 | L1 |
| Rutgers | 0-0 | 3-3 | L1 |
| Purdue | 0-0 | 2-3 | L2 |
| Maryland | 0-0 | 2-3 | L1 |

NATIONAL RANKINGS

| | National | BIG | Stat |
|-----------------------------|----------|-----|-------|
| Assist-to-Turnover | 245 | 13 | 0.66 |
| Assists per Game | 273 | 14 | 10.8 |
| Bench Points Per Game | 288 | 12 | 14.2 |
| Blocked Shots per Game | 294 | 12 | 1.8 |
| Field-Goal % | 251 | 14 | 37.7 |
| Field-Goal % Defense | 157 | 9 | 38.5 |
| Fouls Per Game | 38 | 2 | 14.2 |
| FT Attempts Per Game | 219 | 11 | 15.8 |
| FT Percentage | 11 | 1 | 82.3 |
| FT Made Per Game | 137 | 9 | 13.0 |
| Rebound Margin | 280 | 13 | -4.2 |
| Defensive Rebounds Per Game | 209 | 12 | 24.4 |
| Offensive Rebounds Per Game | 308 | 13 | 9.2 |
| Rebounds Per Game | 286 | 13 | 33.6 |
| Scoring Defense | 179 | 7 | 63.4 |
| Scoring Margin | 256 | 12 | -4.6 |
| Scoring Offense | 277 | 14 | 58.8 |
| Steals Per Game | 284 | 14 | 6.4 |
| 3-Point Attempts Per Game | 181 | 10 | 19.4 |
| 3-Point Percentage | 297 | 14 | 23.7 |
| 3-Point Percentage Defense | 267 | 12 | 33.7 |
| 3-Pointers Per Game | 266 | 14 | 4.6 |
| Turnover Margin | 211 | 11 | -0.40 |
| Turnovers Forced Per Game | 231 | 8 | 15.0 |
| Turnovers Per Game | 171 | 9 | 16.4 |
| Winning Percentage | 231 | 14 | 40.0 |

INDIVIDUAL NATIONAL RANKINGS (TOP-50)

| TOP 50 RANKINGS | National | BIG | Stat |
|---------------------|----------|-----|------|
| Jeanae Terry | | | |
| Assists | 35 | 4 | 27 |
| Assists Per Game | 44 | 4 | 5.4 |

BOILER NOTES**FRESHMEN STAND STALL IN OPENER**

- Against UCLA, the active freshman quartet of Mary Ashley Stevenson, McKenna Layden, Rashunda Jones and Emily Monson combined for 20 points.
- The output was the most by a Purdue freshman class in a season opener since Karissa McLaughlin went for 21 points in the season opener against Central Michigan in the 2017-18 season.
- Stevenson finished with a rookie best eight points, two rebounds, two assists, one block and one steal. She was the first Purdue freshman to score five points and record a block, steal, rebound and assist to start a year since Sam Ostarello against Western Illinois in 2009-10.
- Stevenson, Layden and saw early action against the Bruins. The trio were on the floor together for a combined 10:57 during their career game at Purdue.

DISHING OUT DIMES

- The Boilermakers are 14-0 over the last three seasons when dishing out 20 or more assists.
- Against Southern, the Boilermakers dished out 19 assists on 20 made field goals. They were the fifth most of the Gearlds era, while the 95% assist rate was the best by Purdue since 2015 against Minnesota (24 ast, 25 FGM).

CAITLYN CASHING IN

- Caitlyn Harper is in her sixth and final year of her collegiate career, utilizing her extra season granted by the NCAA for the 2020-21 season.
- She finished third on the team in scoring with 10.4 points per game during her first season in West Lafayette.
- Harper was 1 of 11 players in the Big Ten averaging over 10 points per game while shooting 50% or better from the field.
- Harper paced Purdue with a season-high 20 points on the road at Penn State to top her 15 games in double figures.
- With her 10 points against Illinois, Harper joined the 1,500-point club for her career, following 1,286 points at Cal Baptist.
- The redshirt senior was named the 11th best transfer from a mid-major to a high-major by HerHoopsStats.com last year.
- The Hartland, Wisc., native came to Purdue after leading the WAC in scoring in 2021-22 with 17.7 points per game.
- Harper's honor haul also includes 2022 CoSIDA Academic All-America, 2021-22 WAC Player of the Year, 2021 WAC Tournament MVP.

TERRY'S DOUBLE TROUBLE

- Jeanae Terry has etched her name into the history books at Purdue in several categories.
- The Detroit native is the only player in Purdue men's or women's basketball history to amass multiple triple-doubles in a season and a career, a feat she achieved during the 2021-22 campaign.
- In both of her triple-double performances, the last category Terry hit double digits in was points.
- Terry is also the only Boilermaker to record a non-point double-double. Jeanae Terry recorded the mark three times last season, the most of any player in the nation since 2009.

PURDUE TRIPLE-DOUBLES

| Name | Opponent, Date | Pts | Rebs | Asts/Blks |
|-----------------|--------------------|-----|------|-----------|
| Jeanae Terry | Minnesota, 1/27/22 | 10 | 11 | 12 asts |
| Jeanae Terry | Miami, 12/19/21 | 11 | 12 | 10 asts |
| Stephanie White | Indiana, 1/22/99 | 20 | 11 | 10 asts |
| Daniel Campbell | Butler, 11/17/07 | 12 | 11 | 11 blks |

RANKED MATCHUPS

- Head coach Katie Gearlds has guided Purdue to three ranked wins during her time in West Lafayette. Purdue had dropped their previous 25 contests to ranked opponents before the Gearlds era started.
- Purdue recorded back-to-back ranked wins for the first time since 2018 during the 2022-23 campaign.
- With a 73-65 win over No. 2 Ohio State in Columbus, the Boilermakers tallied their first ever top-five win on the road.
- Purdue snapped the program's 19-game skid to ranked teams with a 66-61 win over No. 17 Florida State last season.
- Gearlds was 23-22 against ranked teams during her playing days in West Lafayette. Her highest ranked win was over No. 5 Kansas State as a freshman in 2003, her first game as a Boilermaker.

SNIPER SOPHIE SWANSON

- A pure shooter and scorer, Sophie Swanson joined the program after a stellar prep career at Barrington Prep in Illinois.
- Swanson was named the 2022 Illinois Miss Basketball and 4A Player of the Year following her junior campaign.
- Swanson tallied 23.1 points per game as a senior before her season was ended with a knee injury in February.
- She set the school record for points in a season (750), 3-pointers in a year (86), thrice set the school mark for points in a game (40, 37, 36)

MURFREESBORO MONSON

- Emily Monson came to West Lafayette after garnering an Naismith High School All-America honorable mention nod.
- Monson powered Blackman High School throughout her career going 107-16 with an 81-8 mark as a three-year starter.
- Monson finished her career with 1,066 points, tallying a career-best 15.8 points per game as a senior. She recorded more points her senior season than her first three years combined.

PURE LEADER AMIYAH REYNOLDS

- Amiyah Reynolds completed a prolific career for South Bend Washington, going 95-18, winning an IHSAA State Champion and three conference titles.
- Reynolds ranked second in South Bend Washington history with 564 assists.
- Her 1,000th point came off an assist from Rashunda Jones.
- Sadly, due to an injury that ended her senior campaign in February, Reynolds will redshirt for the 2023-24 season.
- Despite sitting out drills, Gearlds has made a point to work with Reynolds during practice to ingrain her in the offense.

MAGIC MCKENNA

- McKenna Layden reunited with her sister Madison following a 78-17 career record at Northwestern High School.
- Scoring 1,616 points and pulling down 573 rebounds, Layden was named an Indiana All-Star as a junior and senior.
- She set the Northwestern single-game record with 47 points with nine 3-pointers against Taylor in 2021.
- In addition to her success playing for her mother Kathie, including reaching the IHSAA 4A Championship Game as a freshman alongside Madison, Layden won two sectional titles in volleyball and tennis each.

JAYLA'S JUMP

- Jayla Smith emerged as the top sub off the bench last season when she set career highs for single-game and season stats.
- Smith tallied 7.8 points per game while shooting 45.5% from the field and finished second on the team with 30 steals.
- Smith's biggest impact came with the Boilermakers' season on the line in the Big Ten Tournament. The Indianapolis native laced a wing 3-pointer with less than five seconds remaining and down one to beat Wisconsin 57-55, a victory that likely edged Purdue into the NCAA Tournament.

BOILER NOTES**THE NEXT GENERATION**

- National Signing Day brought Purdue a trio of talented high schools seniors, as Katie Gearlds welcomed Jordyn Poole, Lana McCarthy and Kendall Puryear to the Boilermaker family.
- Out of Fort Wayne Snider High School, Poole is a 5-7 guard and a candidate for Indiana Miss Basketball. Poole was the No. 54 player in the nation and averaged 16.7 points, 3.6 rebounds and 4 assists per game as a junior. Her uncle is Purdue legend Roosevelt Barnes and cousin was Purdue Big Ten Player of the Year Caleb Swanigan.
- Puryear, a 6-2 forward from Lee's Summit, Mo., averaged 15.9 points, 9.9 rebounds and 1.6 assists per game as a junior to be ranked the No. 2 player in the state.
- McCarthy, a 6-4 forward from Bedford, N.H., is the No. 1 player in the state and averaged 21.7 points per game while reaching her third straight state championship game. McCarthy also won four straight volleyball state titles and set the state record in career blocks.

PACKING A PUNCH IN THE PORTAL

- While setting up her first true high school signing class, Katie Gearlds has found some instant impacts in the transfer portal during her time back at Purdue.
- Gearlds landed Abbey Ellis and Jeanae Terry mere weeks after she was hired on staff. Terry started every game for the Boilermakers during her first two seasons, while Ellis has been a spark plug that has lit up Mackey Arena on numerous occasions.
- Last season, Caitlyn Harper and Lasha Petree provided some much-needed veteran experience and scoring talent into the starting lineup. Petree paced Purdue with 14.7 points per game and Harper was one of 12 players in the Big Ten to average double figures and shoot over 50% from the field.
- Gearlds dipped back into the portal to bring two sisters to the program who played their freshman campaigns elsewhere. Alaina Harper joined after a rookie season at Grand Canyon, and Mila Reynolds made the move to West Lafayette after reaching the Elite Eight last season with Maryland.

BEEN THERE. THEY'RE BACK

- Purdue's coaching staff features a trio of alumnae who left their marks on the program during their playing days.
- Head coach Katie Gearlds was one of the best pure scorers in Purdue history, reaching four NCAA Tournaments, three Sweet 16s and an Elite Eight. She continues to rank in the top-10 of numerous career stat categories and was named an All-American in 2007 as a senior.
- 1999 National Champion and new associate head coach Kelly Komara returned to West Lafayette for her second stint on the sidelines. Komara was the 2002 Big Ten Defensive Player of the Year and helped the Boilermakers reach two national title games, winning the lone championship in Big Ten women's basketball.
- Alex Guyton is in her fifth season on staff and third as an assistant coach. Guyton reached three NCAA Tournaments and one the Big Ten championship her four-year career for the Boilermakers
- Another new addition to the coaching ranks at Purdue is dynamic recruiting assistant coach Mark Stephens. After spending the last five seasons on staff at Toledo and Xavier, Stephens returns to the state to lead the Boilermakers' posts and recruiting operations. Stephens' in-state ties run deep after serving as a coach at several high schools and managing Indiana Elite as well as other AAU programs.
- While they didn't play for Purdue, director of video and recruiting Lakan Hasser-Smith and graduate assistant Abby Downard are in-state products with deep ties to Katie Gearlds after playing their entire careers for her at Marian.
- Director of operations Amie Anthorp is well-accustomed to the bright lights of Purdue. After an award-winning career as a guard at Southern Indiana, she married Jade Anthorp, brother to Dru (basketball), Danny (football) and Jackson (football).

WHAT LEFT. WHAT CAME BACK

- Purdue brings back five key contributors from a season ago, including four starters in Jeanae Terry, Abbey Ellis, Madison Layden and Caitlyn Harper.
- Lasha Petree powered the Boilermakers' offense last season with 14.7 points per game. Ellis and Harper joined her in double figures with 11.2 and 10.4 points per game, respectively.

| Category | Total | Returns | % Returning | Left |
|------------------------------------|-------|---------|-------------------|-------|
| Games Started | | 93 | 62.0 | 57 |
| Minutes | | 3,797 | 63.1 | 2,225 |
| Points | 2,114 | 1,244 | 58.8 | 870 |
| 3-Pointers | 213 | 105 | 49.3 | 108 |
| Rebounds | 1,061 | 724 | 68.2 | 337 |
| Assists | 473 | 371 | 78.4 | 102 |
| Turnovers | 460 | 303 | 65.9 | 157 |
| Blocked Shots | 99 | 61 | 61.6 | 38 |
| Steals | 231 | 169 | 73.2 | 62 |
| Field Goal Percentage of Returners | | | 458-1,014 (45.2%) | |

2 VETERANS DEPARTING

- The Boilermakers saw two of their most impactful players from the 2022-23 season depart after graduation.
- Fifth-year senior Cassidy Hardin, who postponed her entry to medical school to come back and play a final season in West Lafayette to get Purdue back to the NCAA Tournament, departed after setting the Purdue men's and women's basketball record for most career games played with 142. Hardin was the fifth player in program history to knock down more than 200 3-pointers in a career, finishing fourth on the career charts with 214.
- Lasha Petree made an instant impact in her lone season at Purdue. The Detroit native tallied 14.7 points per game to finish 15th in the Big Ten in scoring.

PURDUE SPECIALTY STATS (PURDUE/OPP)

| | Off TO | Paint | 2nd-Ch. | Fast B. | Bench |
|---------------|-----------|-----------|----------|---------|-----------|
| UCLA | 9-26 | 20-40 | 8-13 | 2-9 | 20-18 |
| Southern | 6-14 | 22-14 | 3-2 | 4-0 | 4-10 |
| Texas A&M | 26-7 | 34-22 | 8-9 | 7-4 | 20-13 |
| Florida | 15-10 | 30-24 | 7-12 | 4-2 | 17-10 |
| Georgia | 8-20 | 26-36 | 14-19 | 15-14 | 10-36 |
| USI | | | | | |
| Dayton | | | | | |
| Valparaiso | | | | | |
| SEMO | | | | | |
| Minnesota | | | | | |
| Notre Dame | | | | | |
| Indiana State | | | | | |
| Wisconsin | | | | | |
| Rutgers | | | | | |
| Maryland | | | | | |
| Iowa | | | | | |
| Penn State | | | | | |
| Indiana | | | | | |
| MSU | | | | | |
| Ohio State | | | | | |
| Nebraska | | | | | |
| Illinois | | | | | |
| Indiana | | | | | |
| Northwestern | | | | | |
| Nebraska | | | | | |
| MSU | | | | | |
| Wisconsin | | | | | |
| Penn State | | | | | |
| Michigan | | | | | |
| Totals | 64-77 | 132-136 | 40-55 | 32-29 | 71-87 |
| Averages | 12.8-15.4 | 26.4-27.2 | 8.0-11.0 | 6.4-5.8 | 14.2-17.4 |

PURDUE SCORING BY CLASS

| | Fr. | So. | Jr. | Sr. | 5th/6th |
|---------------|------|-----|-----|-----|---------|
| UCLA | 20 | 0 | 4 | 0 | 25 |
| Southern | 17 | 0 | 0 | 21 | 29 |
| Texas A&M | 22 | 0 | 0 | 8 | 42 |
| Florida | 10 | 0 | 13 | 0 | 26 |
| Georgia | 21 | 0 | 0 | 14 | 22 |
| USI | | | | | |
| Dayton | | | | | |
| Valparaiso | | | | | |
| SEMO | | | | | |
| Minnesota | | | | | |
| Notre Dame | | | | | |
| Indiana State | | | | | |
| Wisconsin | | | | | |
| Rutgers | | | | | |
| Maryland | | | | | |
| Iowa | | | | | |
| Penn State | | | | | |
| Indiana | | | | | |
| MSU | | | | | |
| Ohio State | | | | | |
| Nebraska | | | | | |
| Illinois | | | | | |
| Indiana | | | | | |
| Northwestern | | | | | |
| Nebraska | | | | | |
| MSU | | | | | |
| Wisconsin | | | | | |
| Penn State | | | | | |
| Michigan | | | | | |
| Totals | 83 | 0 | 17 | 43 | 144 |
| Averages | 16.6 | 0 | 3.4 | 8.6 | 28.8 |



TOP PERFORMANCES *includes previous school

| Triple-Double | 23-24 | Career |
|------------------------|-------|--------|
| Jeanae Terry | | 2 |
| Double-Double | 23-24 | Career |
| Jeanae Terry | | 14* |
| Caitlyn Harper | 1 | 1 |
| Score 10+ Points | 23-24 | Career |
| Caitlyn Harper | 4 | 85* |
| Abbey Ellis | 5 | 73* |
| Madison Layden | 2 | 38 |
| Jeanae Terry | | 31* |
| Jayla Smith | 1 | 15 |
| Mary Ashley Stevenson | 2 | 2 |
| Rashunda Jones | 2 | 2 |
| Scored 20+ Points | 23-24 | Career |
| Abbey Ellis | 1 | 22* |
| Caitlyn Harper | | 20* |
| Jeanae Terry | | 3* |
| Madison Layden | 1 | 3 |
| Rashunda Jones | 1 | 1 |
| Made 13-Pointer | 23-24 | Career |
| Abbey Ellis | 4 | 75* |
| Madison Layden | 3 | 65 |
| Jeanae Terry | | 24* |
| Caitlyn Harper | 3 | 25* |
| Jayla Smith | 1 | 23 |
| McKenna Layden | 1 | 1 |
| Rashunda Jones | 1 | 1 |
| Emily Monson | 1 | 1 |
| Made 2+ 3-Pointers | 23-24 | Career |
| Madison Layden | 1 | 44 |
| Abbey Ellis | 1 | 42* |
| Caitlyn Harper | 1 | 22* |
| Jayla Smith | | 8 |
| Jeanae Terry | | 7* |
| Recorded 10+ Rebounds | 23-24 | Career |
| Jeanae Terry | 1 | 22* |
| Caitlyn Harper | 1 | 11* |
| Abbey Ellis | | 2* |
| Recorded 5+ Assists | 23-24 | Career |
| Jeanae Terry | 2 | 59* |
| Madison Layden | | 14 |
| Abbey Ellis | | 13* |
| Recorded 3+ Steals | 23-24 | Career |
| Jeanae Terry | 1 | 25* |
| Madison Layden | 1 | 20 |
| Abbey Ellis | 1 | 19* |
| Caitlyn Harper | | 7* |
| Jayla Smith | | 4 |
| Recorded 3+ Blocks | 23-24 | Career |
| Caitlyn Harper | | 15* |
| Jayla Smith | | 1 |
| Jeanae Terry | | 1* |
| Played a Complete Game | 23-24 | Career |
| Madison Layden | | 2 |
| Caitlyn Harper | | 1* |

BOILER NOTES**A WEEKEND FOR THE CHAMPS**

- Purdue welcomed home its legendary 1998-99 team this weekend to celebrate the 25-year anniversary of the Big Ten's only national championship in women's basketball over the weekend of Nov. 10-12.
- The championship squad was honored in front of a sold-out Mackey Arena for the men's basketball game on Friday, before an on-field ceremony at the football game on Saturday. The weekend culminated with a halftime ceremony at the women's game in front of 5,002 fans on Sunday.
- Head coach Katie Gearlds unveiled a new trophy display for the Sears Trophy at the front of Mackey Arena, complete with photos and quotes of players from that magical year.
- A major piece from the celebration involved a Boilermaker who was gone too soon. Tiffany Young, a charismatic junior guard passed away four months after winning the title in a car accident. Throughout the 2023-24 season, Purdue will reopen the Tiffany Young Scholarship Endowment to provide a women's basketball student-athlete a scholarship in her name.

THE BIG TEN'S ONLY NATIONAL CHAMPIONS

- Led by National Coach of the Year Carolyn Peck, the Boilermakers finished the year with a program-best 34-1 record, a perfect 16-0 mark in Big Ten play, a Big Ten Tournament title and a 62-45 win in the National Championship Game over Duke.
- The 1998-99 season opened when Purdue knocked off three-time defending national champion and No. 1-ranked Tennessee at Mackey Arena 78-68.
- Stephanie White was named an All-American, the Honda Award winner and the Wade Trophy honoree, as well as the Big Ten Player and Athlete of the Year. Ukari Figgs earned an honorable mention All-America nod and was named the 1999 Most Outstanding Player of the NCAA Tournament.
- The victory was bittersweet as guard Tiffany Young tragically died when she was killed by a drunk driver just over four months after winning the national championship. The 1998-99 team have continued to bring back their memories and love for Young over the last 25 years to ensure her impact on their lives will never be forgotten.

THE VOICE OF THE BOILERMAKERS

- In his 34th season calling Purdue women's basketball, play-by-play man Tim Newton is closing in on his 1,000th game with Purdue women's basketball.
- He has called 993 games in his time with the Boilermakers.
- Purdue is 676-317 in games called by Newton. He has been on the air for 993 of Purdue's 1,465 total games.
- Newton has provided the call for all seven Big Ten regular season titles, all nine Big Ten Tournament Championships, three Final Fours and 25 of 27 NCAA Tournament appearances.
- Perhaps Newton's best call came in the final seconds of the 1999 National Championship as Purdue became the only Big Ten team to capture the national title.
- "Ladies and gentlemen, the national champion team resides in West Lafayette, Indiana, as Katie Douglas throws the ball skyward. It's over. Purdue wins 62-45, capturing the national championship."
- Based on the best research available, Newton and LSU's play-by-play voice Patrick Wright will be the only active radio voices to reach 1,000 games called. Both should hit the mark in December.

PROBOILERS

- Purdue has four players currently rostered on professional teams in Europe.
- Aya Traore, a teammate of Gearlds' during her playing time in West Lafayette, plays for Lleida in the Spanish LF2 Division.
- Ae'Rianna Harris, a 2020 Purdue graduate, is with Picken Claret in the Spanish LF2 Division.
- Andreona Keys signed to play for Arad in the Romanian Liga Nationala.
- Lasha Petree is suiting up for Vimpelin Veto in the Finnish Korisliiga.

SELLING OUT MACKEY

- For the third time in program history and the first since 2000, Mackey Arena sold out for a women's basketball game when the Boilermakers faced No. 4 Indiana last season.
- The crowd of 14,876 set a new record for the program and was the then-16th highest-attended game in Big Ten history.
- Following an Indiana-record 17,222 fans when Purdue and Indiana played on Feb. 19, the grand total of fans who watched the best rivalry in college basketball came to a record 32,098.
- The attendance, at the time, was the second largest on campus nation this season behind Missouri at South Carolina (15,444) and Florida at Oklahoma (19,236).
- Purdue was the fifth Big Ten team to go over 10,000 in attendance this season (Michigan, Maryland, Iowa, Indiana).
- In the regular season, Purdue played in the third and ninth most attended games in the nation last year.

BACK IN THE BIG DANCE

- The Boilermakers made their return to the NCAA Tournament for the 27th time in program history in 2022-23.
- Led by Carolyn Peck, the Boilermakers won the 1999 national title, the only women's basketball championship earned by a Big Ten program.
- In addition to the championship, Purdue has reached two title games (2001 loss to Notre Dame), three Final Fours, eight Elite Eights and 12 Sweet 16s.
- Six Boilermakers have been named to the Final Four All-Tournament Team, including 1999 Most Outstanding Player Ukari Figgs.
- Eighteen players have garnered NCAA Regional All-Tournament Team honors, with Katie Gearlds garnering the laurel in 2007.
- Purdue has a 47-25 all-time record in March Madness.

A WINNING HISTORY

- Putting on the Old Gold & Black carries with it a standard that was set more than three decades ago when the Boilermakers lifted their first Big Ten title in 1991.
- Purdue is the only Big Ten team to win a national championship in women's basketball.
- Despite not reaching the Big Dance since 2016-17, the Boilermakers' 26 NCAA Tournament appearances are tied with Ohio State for second in the Big Ten behind Iowa's 28.
- With its last Big Ten Tournament title coming in 2013, Purdue owns the record for most league tourney championships with nine (1998-99-2000-03-04-07-08-12-13)
- Purdue has won seven Big Ten regular season championships, good for fourth in the league, with the last one coming in 2002.

SOMETHING ABOUT A TRUCK

- A heartfelt story told by the Big Ten Network during the 2022-23 season centered around Gearlds' relationship with her parents.
- As a freshman at Beech Grove High School, Gearlds made a deal with her parents that if she was named Indiana Miss Basketball, they would buy her the car of her dreams.
- Four years and an incredible high school career later, her father Tony traded in his truck to surprise Katie with a 2002 yellow Ford Mustang in the family garage. Tony took over Katie's 1988 Chevy Celebrity, driving it until the wheels fell off.
- In the summer of 2022, Katie returned the favor and surprised her dad to buy him any brand new he wanted. The only rule, it could not be red.

SISTER SISTER**Madison Layden** - Feb. 7, 2002**McKenna Layden** - Jan. 11, 2005**Age Gap** - 1,069 days or 2 years, 11 months, 4 days**Parents** - Kathie & Jeff Layden**Hometown** - Kokomo, Ind.

- Madison and McKenna Layden are back together for the first time since Madison's senior year of high school in 2020, when the duo guided Northwestern to the 4A IHSA State Championship game.
- Their mother Kathie was the head coach of the basketball team assisted by their father Jeff. The Laydens won back-to-back state titles in 2018 and 2019.
- The tandem played basketball, volleyball and tennis together throughout their high school careers.
- Kathie won five Indiana State championships as a head coach, the most by a non-private school head coach, during her career that she retired from in 2023 after 23 seasons.
- Madison claimed a trio of sectional titles and back-to-back 3A state titles, before McKenna joined the high school ranks.
- McKenna owns the Northwestern High School record for points in a game with 47 off nine 3-pointers during her senior year.
- The Laydens were honored in a Hamburger Helper commercial when McKenna and Madison were children.

**Mila Reynolds** - July 1, 2003**Amiyah Reynolds** - June 25, 2004**Age Gap** - 360 days or 11 months, 24 days**Parents** - Steve & Marcy Reynolds**Hometown** - South Bend, Ind.

- After an impressive three years together at South Bend Washington, Mila and Amiyah Reynolds are reunited on the same roster after a year hiatus.
- Combined, the duo won the 2022 Class 3A State Championship and posted a 68-17 record together over three years.
- Mila finished her career with a 78-30 mark and amassed 2,099 career points, second in program history to Skylar Diggins-Smith.
- Amiyah was the No. 43 player in the nation and the second highest Big Ten signee in the class of 2023, per ESPN. She finished her career ranked second in assists with 564 and in the top 10 in points. Reynolds' senior season came to an abrupt ending due to an foot/ankle injury that will rule her out of the 2023-24 season.
- The unofficial third sister of the group is fellow South Bend Washington Panther Rashunda Jones who created an unstoppable backcourt with Amiyah. The duo went 95-18 over their four years on the court.
- Rashunda finished as the runner up for the 2023 Indiana Miss Basketball.
- Their father Steve was the head coach of South Bend Washington assisted by their mother Marcy, both of whom played professionally overseas.
- Mila and Amiyah are two of the seven Reynolds children.
- The Reynolds and Rashunda Jones have played together since grade school after attending church together as children.

**Caitlyn Harper** - Feb. 12, 2000**Alaina Harper** - Dec. 4, 2003**Age Gap** - 1,391 days or 3 years, 9 months, 22 days**Parents** - Dale & Rhonda Harper**Hometown** - Heartland, Wis.

- Due to the long age gap, Caitlyn and Alaina Harper will play on the same team for the first time in their lives.
- After Caitlyn had a standout career at Arrowhead High School, Alaina followed suit wearing the same No. 34 her sister wore.
- Prior to transferring to Purdue ahead of the 2022-23 season, Caitlyn was an all-conference player at Arrowhead before earning WAC Player of the Year honors at Cal Baptist.
- Alaina spent her freshman campaign at Grand Canyon following an all-conference career at Arrowhead.
- Their father Dale played collegiately at Bemidji State.
- Strong academics have always played a major role in their lives. Caitlyn was a 2022 CoSIDA All-American and earned a 3.9 GPA at Arrowhead. Alaina bettered that with a perfect 4.0 GPA in high school.

**PURDUE IN THE POLLS**

| Week | AP | Coaches | NET |
|-----------|----|---------|-----|
| Preseason | - | - | - |
| Week 1 | - | - | - |
| Week 2 | - | - | - |
| Week 3 | - | - | - |
| Week 4 | - | - | - |
| Week 5 | - | - | - |
| Week 6 | - | - | - |
| Week 7 | - | - | - |
| Week 8 | - | - | - |
| Week 9 | - | - | - |
| Week 10 | - | - | - |
| Week 11 | - | - | - |
| Week 12 | - | - | - |
| Week 13 | - | - | - |
| Week 14 | - | - | - |
| Week 15 | - | - | - |
| Week 16 | - | - | - |
| Week 17 | - | - | - |
| Week 18 | - | - | - |
| FINAL | - | - | - |

SINGLE-GAME RECORDS**SINGLE-GAME POINTS**

| | | | | |
|-----------|----|-----------------|-------------------|---------|
| Overall | 41 | Katie Gearlds | at Wisconsin | 2/18/07 |
| Senior | 41 | Katie Gearlds | at Wisconsin | 2/18/07 |
| Junior | 37 | MaChelle Joseph | at Michigan State | 2/15/91 |
| Sophomore | 40 | Shereka Wright | at Michigan | 2/17/02 |
| Freshman | 34 | Leslie Johnson | at Vanderbilt | 12/5/93 |

SINGLE-GAME FIELD GOALS

| | | | | |
|-----------|----|-----------------|-------------------|---------|
| Overall | 16 | MaChelle Joseph | at Michigan State | 2/15/91 |
| Senior | 14 | Jannon Roland | at Ohio state | 1/23/97 |
| Junior | 16 | MaChelle Joseph | at Michigan State | 2/15/91 |
| Sophomore | 15 | Shereka Wright | at Michigan | 2/17/02 |
| Freshman | 13 | Leslie Johnson | Northwestern | 2/27/94 |

SINGLE-GAME 3-POINTERS

| | | | | |
|-----------|----|--------------------|-------------------|---------|
| Overall | 12 | Brittany Rayburn | at Minnesota | 1/12/12 |
| Senior | 12 | Brittany Rayburn | at Minnesota | 1/12/12 |
| Junior | 7 | Karissa McLaughlin | at Michigan State | 1/30/20 |
| Sophomore | 9 | 2x, K. McLaughlin | Northwestern | 2/17/19 |
| Freshman | 6 | 5x, Madison Layden | at Iowa | 1/18/21 |

SINGLE-GAME FREE THROWS MADE

| | | | | |
|-----------|----|--------------------|-----------------|---------|
| Overall | 16 | Shereka Wright | Penn State | 1/16/03 |
| Senior | 13 | 2x, Shereka Wright | at Northwestern | 2/15/04 |
| Junior | 16 | Shereka Wright | Penn State | 1/16/03 |
| Sophomore | 14 | 3x, Courtney Moses | at Northwestern | 1/26/12 |
| Freshman | 14 | Leslie Johnson | Ohio State | 2/13/94 |

SINGLE-GAME REBOUNDING

| | | | | |
|-----------|----|------------------|-------------------|---------|
| Overall | 25 | Leslie Schultz | at Miami (OH) | 12/2/81 |
| Senior | 20 | Joy Holmes | at Wisconsin | 1/27/91 |
| Junior | 25 | Leslie Schultz | at Miami (OH) | 12/2/81 |
| Sophomore | 20 | Cathery Tyree | at Michigan State | 1/11/85 |
| Freshman | 23 | Natasha Cender | Michigan | 2/7/76 |
| Offensive | 12 | Joy Holmes | Minnesota | 2/10/91 |
| Defensive | 16 | 2x, Whitney Bays | at Dayton | 12/7/14 |

SINGLE-GAME ASSISTS

| | | | | |
|-----------|----|-------------------|-------------------|----------|
| Overall | 16 | MaChelle Joseph | Northern Illinois | 3/22/92 |
| Senior | 16 | MaChelle Joseph | Northern Illinois | 3/22/92 |
| Junior | 14 | Lisa Jahner | Michigan | 3/7/87 |
| Sophomore | 12 | MaChelle Joseph | New Mexico State | 12/29/89 |
| Freshman | 11 | 3x, K. McLaughlin | Penn State | 1/28/18 |

SINGLE-GAME BLOCKS

| | | | | |
|-----------|----|----------------------|----------------------|----------|
| Overall | 11 | Danielle Campbell | Butler | 11/17/07 |
| Senior | 9 | Ae/Rianna Harris | at #5 South Carolina | 12/15/19 |
| Junior | 11 | Danielle Campbell | Butler | 11/17/07 |
| Sophomore | 7 | 3x, Ae/Rianna Harris | Lamar | 11/18/17 |
| Freshman | 7 | 2x, Nora Kiesler | at Penn State | 1/30/16 |

SINGLE-GAME STEALS

| | | | | |
|-----------|----|-----------------|----------------|----------|
| Overall | 12 | Joy Holmes | Minnesota | 1/13/89 |
| Senior | 9 | Michelle Duhart | Michigan State | 2/24/00 |
| Junior | 10 | Cherelle George | South Carolina | 11/26/05 |
| Sophomore | 12 | Joy Holmes | Minnesota | 1/13/89 |
| Freshman | 8 | FahKara Malone | Illinois | 2/8/07 |

WINNING MARGINS**When Leading**

| | |
|---------------------------------|-----------------------------|
| Largest Margin of Victory | 17, vs. Southern, 11/12/23 |
| Largest Overall Lead | 19, vs. Texas A&M, 11/16/23 |
| Largest Halftime Lead | 6, vs. Southern, 11/12/23 |
| Largest Lead in a Loss | 5, vs. Georgia, 11/22/23 |
| Largest Halftime Lead in a Loss | |
| Largest Purdue Run | 15, vs. Texas A&M, 11/16/23 |

When Trailing

| | |
|-----------------------------------|----------------------------|
| Largest Margin of Defeat | 43, at UCLA, 11/6/23 |
| Largest Overall Deficit | 45, at UCLA, 11/6/23 |
| Largest Halftime Deficit | 28, at UCLA, 11/6/23 |
| Largest Deficit Overcome to Win | 8, vs. Texas A&M, 11/16/23 |
| Largest Halftime Deficit in a Win | |
| Largest Opponent Run | 10, at UCLA, 11/6/23 |

Games When the Margin is

| Win | Loss |
|--------------|------|
| 1 Point | |
| 2 Points | |
| 3 Points | 1 |
| 4 Points | |
| 5 Points | |
| 6 Points | |
| 7 Points | |
| 8 Points | 1 |
| 9 Points | |
| 10-19 Points | 2 |
| 20-29 Points | |
| 30+ Points | 1 |

HONORS AT PURDUE**Abbey Ellis**

Team Captain for first time - 2023-24
All-Big Ten Honorable Mention - 2021-22, 2022-23

Caitlyn Harper

Team Captain for first time - 2023-24

Rashunda Jones

Big Ten Freshman of the Week - Nov. 20

Madison Layden

Team Captain for third season - 2021-2024

Jeanae Terry

Team Captain for third season - 2021-2024
Second Team All-Big Ten - 2022-23
Big Ten All-Defensive Team - 2022-23

RECORDS WATCH

• Check out which Boilermakers are climbing the single-season and career charts this year.

CAREER ASSISTS AT PURDUE

| | | |
|-------------------------|------------|---------------------|
| 6. FahKara Malone | 513 | 2007-10 |
| 7. Erika Valek | 479 | 2001-04 |
| 8. KK Houser | 455 | 2010-14 |
| 9. Jennifer Jacoby | 427 | 1992-95 |
| 10. Sharon Versyp | 418 | 1985-88 |
| 11. Ukari Figgs | 409 | 1996-99 |
| 12. Kelly Komara | 402 | 1999-02 |
| 13. Jeanae Terry | 400 | 2022-Present |
| 14. Katie Gearlds | 399 | 2004-07 |

CAREER ASSIST TO TURNOVER RATIO AT PURDUE (MIN. 200 ASTS)

| | | |
|--------------------------|-------------|---------------------|
| 1. Jeanae Terry | 1.96 | 2022-Present |
| 2. April Wilson | 1.68 | 2013-16 |
| 3. Jennifer Jacoby | 1.64 | 1992-95 |
| Katie Gearlds | 1.64 | 2004-07 |
| 5. Karissa McLaughlin | 1.54 | 2018-2021 |
| 6. Madison Layden | 1.48 | 2021-Present |
| 7. Lisa Jahner | 1.46 | 1985-88 |
| 8. Cindy Lamping | 1.40 | 1992-95 |
| 9. Dominique Oden | 1.38 | 2017-20 |
| 10. Ukari Figgs | 1.37 | 1996-99 |

CAREER FREE THROW PERCENTAGE AT PURDUE (MIN. 175 ATT)

| | | |
|-----------------------|-----------------------|---------------------|
| 1. Courtney Moses | 90.6 - 290-320 | 2011-14 |
| 2. Abbey Ellis | 88.5 - 177-200 | 2022-Present |
| 3. Karissa McLaughlin | 86.7 - 176-203 | 2017-21 |
| 4. Katie Gearlds | 86.3 - 314-364 | 2004-07 |
| 5. Ukari Figgs | 84.1 - 359-427 | 1996-99 |
| 6. Brittany Rayburn | 82.1 - 538-665 | 2009-12 |
| Drey Mingo | 82.1 - 183-223 | 2010-13 |

CAREER 3-POINTERS

| | | |
|---------------------------|------------|---------------------|
| 5. Brittany Rayburn | 201 | 2009-12 |
| 6. Dominique Oden | 193 | 2017-20 |
| 7. Jodi Howell | 188 | 2006-10 |
| 8. Stephanie White | 183 | 1996-99 |
| 9. Ashley Morrisette | 181 | 2014-17 |
| 10. Ukari Figgs | 174 | 1996-99 |
| 11. KK Houser | 167 | 2010-14 |
| 12. Jennifer Jacoby | 157 | 1992-95 |
| 13. Beth Jones | 154 | 2001-04 |
| 14. Madison Layden | 151 | 2021-Present |

CAREER TRIPLE-DOUBLES

| | | |
|-----------------|---|--------------|
| 1. Jeanae Terry | 2 | 2022-Present |
|-----------------|---|--------------|

2023-24 ROSTER

| No. | Name | Yr. | Pos. | Ht. | Hometown/High School/Previous School |
|-----|-----------------------|-----|------|------|---|
| 1 | Amiyah Reynolds | Fr. | G | 6-0 | South Bend, Ind. / South Bend Washington |
| 2 | Rashunda Jones | Fr. | G | 5-8 | South Bend, Ind. / South Bend Washington |
| 3 | Jayla Smith | Jr. | G | 6-0 | Indianapolis, Ind. / Lawrence North |
| 10 | Jeanae Terry | 5th | G | 5-11 | Detroit, Mich. / Wayne Memorial / Illinois |
| 11 | McKenna Layden | Fr. | G | 6-2 | Kokomo, Ind. / Northwestern |
| 15 | Mila Reynolds | So. | F | 6-3 | South Bend, Ind. / South Bend Washington / Maryland |
| 20 | Mary Ashley Stevenson | Fr. | F | 6-2 | New York City, N.Y. / The Dalton School |
| 21 | Emily Monson | Fr. | G | 6-1 | Murfreesboro, Tenn. / Blackman |
| 23 | Abbey Ellis | 5th | G | 5-6 | Melbourne, Australia / Our Lady of Mercy / Cal Poly |
| 31 | Sophie Swanson | Fr. | G | 5-10 | Barrington, Ill / Barrington Prep |
| 32 | Alaina Harper | So. | F | 6-3 | Hartland, Wis. / Arrowhead / Grand Canyon |
| 33 | Madison Layden | Sr. | G | 6-1 | Kokomo, Ind. / Northwestern |
| 34 | Caitlyn Harper | 6th | F | 6-3 | Hartland, Wis. / Arrowhead / Cal Baptist |

| Name | Position | Year at Purdue | Year Coaching | Alma Mater |
|--------------------|---|----------------------|---------------|------------------------|
| Katie Gearlds | Head Coach | 3rd Year | 11th Year | Purdue - '07 |
| Kelly Komara | Associate Head Coach | 1st Year / 3rd Year* | 20th Year | Purdue - '02 |
| Mark Stephens | Assistant Coach / Recruiting | 1st Year | 7th Year | Morehead State - '02 |
| Alex Guyton | Assistant Coach | 5th Year | 7th Year | Purdue - '12 |
| Tiffini Grimes | Deputy Athletic Director / SWA | 2nd Year | | Purdue - '05 |
| Amie Anthrop | Director of Operations | 1st Year | | Southern Indiana - '11 |
| Chaz Calloway | Director of Strength & Conditioning | 1st Year | | Cincinnati - '14 |
| Jessica Lipsett | Director Athletic Training and Physical Therapy | 21st Year | | Illinois - '00 |
| Lakan Hasser-Smith | Director Video/Recruiting Assistant | 2nd Year | | Marian - '16 |
| Abby Downard | Graduate Assistant | 1st Year | | Marian - '21 |

*Served on staff from 2014-16

| | | | |
|-----------------|------------|---------------|------------------------------|
| Amiyah Reynolds | ah-MY-yah | Alaina Harper | ah-LAY-na |
| Rashunda Jones | ra-SHUN-da | Katie Gearlds | soft g (like the first name) |
| Mila Reynolds | MEE-la | Kelly Komara | kom-AIR-ah |

Associate Head Coach Kelly Komara

Alma Mater: Purdue '02 | **Season at Purdue/Career:** 1st/3rd/20th
Select Experience: Marquette - Assistant (22-23), Vanderbilt - Associate Head Coach (19-21), Vanderbilt - Assistant (17-18), Purdue - Assistant (15-16)
Select Highlights: 1999 National Champion, 2002 Big Ten Defensive Player of the Year, 3-time All-Big Ten selection, 4 NCAA Tournaments, 2 National Championship Games, 5 Big Ten titles

Assistant Coach Mark Stephens

Alma Mater: Morehead State '02 | **Season at Purdue/Career:** 1st/7th
Select Experience: Toledo - Assistant (20-23), Xavier - Assistant (17-19), Crispus Attucks - Head Coach (2012-16), Indiana Elite - Club Director
Select Highlights: Helped Toledo to three MAC titles and an NCAA Appearance, mentored numerous Indiana Miss Basketball winners during his AAU coaching career

Assistant Coach Alex Guyton

Alma Mater: Purdue '12 | **Season at Purdue/Career:** 5th/7th
Select Experience: Purdue - Director of Player Development (19-21), Eastern Illinois - Assistant (17-19), Carmel HS - Assistant (14-17)
Select Highlights: Played 124 games won a pair of Big Ten Tournament titles, 3 NCAA Tournaments and an Elite Eight, coached Michigan's Amy Dilk while at Carmel

**1 AMIYAH REYNOLDS****2 RASHUNDA JONES****3 JAYLA SMITH****10 JEANAE TERRY****11 MCKENNA LAYDEN****15 MILA REYNOLDS****20 MARY ASHLEY STEVENSON****21 EMILY MONSON****23 ABBEY ELLIS****31 SOPHIE SWANSON****32 ALAINA HARPER****33 MADISON LAYDEN****34 CAITLYN HARPER****KATIE GEARLDS****KELLY KOMARA****MARK STEPHENS****ALEX GUYTON**



KATIE GEARLDS

HEAD COACH | 3RD SEASON AT PURDUE | 11TH SEASON OVERALL | PURDUE '07

@katiegearlds4
@katiegearlds4

| Year | Overall | BIG | Non-Con. | BIG Tourney | NCAAs | WNIT | Home | Road | Neutral | vs. Top-25 | Unranked |
|---------------|--------------|--------------|-------------|-------------|-------------|-------------|--------------|--------------|-------------|-------------|--------------|
| 2021-22 | 17-15 | 7-11 | 9-2 | 0-1 | - | 1-1 | 11-6 | 5-7 | 1-2 | 1-6 | 16-9 |
| 2022-23 | 19-11 | 9-8 | 9-1 | 1-1 | 0-1 | - | 10-4 | 6-4 | 3-2 | 2-6 | 17-4 |
| 2023-24 | 2-3 | - | 2-3 | - | - | - | 2-0 | 0-1 | 0-2 | 0-1 | 2-2 |
| Totals | 38-29 | 16-19 | 20-6 | 1-2 | 0-1 | 1-1 | 23-10 | 11-12 | 4-7 | 3-13 | 34-16 |
| Pct. | .567 | .457 | .769 | .333 | .000 | .500 | .697 | .478 | .364 | .188 | .680 |

AN IMPACT BACK IN WEST LAFAYETTE

- In two seasons back at her alma mater, Katie Gearlds has guided the Boilermakers back to the postseason twice.
- After posting a 19-win campaign in 2022-23, Gearlds joined the elite company of Carolyn Peck and Lin Dunn as the only Boilermaker head coaches to post win improvements in each of their first two campaigns.
- The Boilermakers made their return to the NCAA Tournament for the first time since 2017 with a bid to the First Four last year.
- Prior to her arrival, Purdue had dropped its last 19 games against a ranked opponent. In two seasons, Gearlds has racked up three, including the program's first AP top-5 win in a true road game against No. 2 Ohio State in 2022-23.
- Katie Gearlds reached the 250-win plateau for her career against Harvard, reaching the feat in 315 career games.

HITTING THE RECRUITING TRAIL

- The 2023-24 freshmen made up Gearlds' first true recruiting class through an entire cycle.
- Landing five signees in November of 2022, the 2023 class ranked No. 21 in the nation, before Gearlds welcomed in top-50 player Amiyah Reynolds to the program the following May.
- A former Indiana Miss Basketball, Gearlds has placed a major emphasis on recruiting and ensuring the best talent in the state comes to Purdue.
- Gearlds has also found success in the transfer portal with Jeanae Terry and Abbey Ellis garnering All-Big Ten nods, while Lasha Petree and Caitlyn Harper powered the offense in 2022-23.

THE JOB SO FAR

- Gearlds guided the Boilermakers on another step forward in 2022-23, making the NCAA Tournament for the first time since 2017.
- After having a full offseason to prepare, the Boilermakers went 19-11 and tallied a pair of ranked wins over No. 22 Illinois and No. 2 Ohio State.
- The Katie Gearlds era started sooner than expected in 2021-22, when she took over the program a mere 47 days prior to the season opener.
- Purdue finished 17-15 on the year, winning 10 more games than the previous campaign. It was the best win improvement by first-year head coach at Purdue and the third best in program history.
- The Boilermakers finished 10-2 in the non-conference, marking the second-best clip by a first-year head coach.
- The Boilermakers reached the postseason for the first time since 2017-18, ending the campaign in the second round of the WNIT.

COACHING EXPERIENCE

- Spent eight seasons taking Marian University winning back-to-back NAIA National Championships in 2016 and 2017.
- Went 228-50 record, an 82% clip with the Knights.
- Three-time NAIA National Coach of the Year, won 10 total Crossroads League titles and made seven appearances in the NAIA Tournament.
- Guided 12 WBCA NAIA All-America selections, compared to just five in the first 37 years of the program's existence.

PROFESSIONAL CAREER

- Played professionally over six seasons
- Spent three seasons in the WNBA with the Seattle Storm,
- Was taken with the seventh overall pick in the 2007 WNBA Draft, the highest selection ever from Purdue
- Two of her closest teammates and friends over the years are WNBA legend Sue Bird and fellow WNBA great and New Orleans Pelicans Vice President of Basketball Operations Swin Cash.
- Gearlds is the highest draft pick in Purdue history, going seventh overall to the Seattle Storm in 2007.

ALL-AMERICAN AT PURDUE CAREER

- Was a three-year starter from 2004-07.
- Ranks fourth in program history with 1,974 points and was the ninth fastest to join the 1,000-point club.
- Named a Legend of Mackey Arena for the 50th season.
- Won two Big Ten Tournament titles and never missed the NCAA Tournament with Gearlds in the squad
- Reached three Sweet 16s and one Elite Eight.
- Set the Purdue single-game record with 41 points at Wisconsin on Feb. 18, 2007, and scored 707 points to tie the single-season program record.
- 2007 Third Team AP All-America WBCA Honorable Mention
- Four-time All-Big Ten and the 2004 Big Ten Freshman of the Year.
- Earned a bachelor's degree in sociology and minored in psychology and communications from Purdue in 2007.

ONE-OF-A-KIND PREP CAREER

- Named the Indiana Miss Basketball in 2003.
- Amassed 2,521 career points, good for sixth in IHSAA history.
- Averaged 30.1 points, 9.4 rebounds, 5.4 assists and 5.1 steals per game to lead Beach Grove High School to the 2003 Class 3A State Championship.
- Nike/WBCA All-America, First Team All-State and the Gatorade Indiana Player of the Year.
- A McDonald's All-American, was named the MVP of the McDonald's All-America Game the same season as a young talent from Akron, Ohio - LeBron James.

INSPIRED BY GREATNESS

- Gearlds has a deep bench of basketball legends who have touched and continue to influence her career.
- One of the few people who can say they've worked with two G.O.A.T.s, Gearlds was the MVP of the 2003 McDonald's All-America Game with LeBron James.
- Sue Bird, her teammate with the Storm and a mentor over the last 15 years, inspired Gearlds to go into coaching.
- She also shared the court in Seattle with Swin Cash (V.P. New Orleans Pelicans), Adia Barnes (Arizona head coach) and Lauren Jackson (owner Melbourne Boomers).
- She competed against Chris Paul in the skills challenge ahead of the 2003 McDonald's All-America Game.

AN INDIANA LEGEND

- One of the best products of Indiana basketball, Gearlds claimed a state title, a Big Ten championship and a national title with programs from the Crossroads State.
- Named Indiana Miss Basketball as a senior at Beech Grove in 2003, Gearlds guided the Hornets to a 3A state championship, setting a state record across all classes with 33 points in the final. Today, she ranks 11th in state history with 2,521 career points.
- As a Boilermaker from 2003-07, Gearlds reached the NCAA Tournament four times, won two Big Ten Tournament titles, sits fourth in Purdue history with 1,974 career points and holds the record for points in a season with 707 with Stephanie White.
- Following a six-year professional career, Gearlds took over the reins at Marian in Indianapolis, posting a 227-49 record over eight years, winning three NAIA Coach of the Year honors and claiming two national championships.

| GEARLDS' YEAR-BY-YEAR | | | | | |
|-----------------------|--------|---------|-------|-----------------|--------|
| Year | School | Overall | Conf. | Post. | Rank |
| 2013-14 | Marian | 16-16 | 8-10 | - | - |
| 2014-15 | Marian | 28-6 | 14-4 | NAIA R32 | - |
| 2015-16 | Marian | 32-6 | 16-2 | NAIA Champ | No. 1 |
| 2016-17 | Marian | 35-3 | 17-1 | NAIA Champ | No. 1 |
| 2017-18 | Marian | 32-3 | 17-1 | NAIA R16 | No. 8 |
| 2018-19 | Marian | 27-7 | 16-2 | NAIA R32 | No. 17 |
| 2019-20 | Marian | 31-3 | 16-2 | NAIA R16 | No. 13 |
| 2020-21 | Marian | 27-6 | 16-0 | NAIA R32 | No. 9 |
| 2021-22 | Purdue | 17-15 | 7-11 | WNIT 2nd Rd | - |
| 2022-23 | Purdue | 19-11 | 9-8 | NCAA First Four | - |
| 2023-24 | Purdue | 2-3 | - | - | - |
| 11th Year | | 266-79 | 16-19 | - | - |

| GEARLDS' TIMELINE | |
|-------------------|--|
| 2021-Present | Head Coach, Purdue |
| 2013-21 | Head Coach, Marian |
| 2013 | Toyota Huelva, Spain |
| 2011-12 | Orion Ibaizabal Galdakao, Portugal |
| 2010 | FEA Neas Halkindonas, Greece |
| 2008 | Kosit Kosice, Slovakia |
| 2007-09 | Seattle Storm, WNBA |
| 2003-07 | All-America Guard, Purdue |
| 1999-03 | All-America Guard, Beech Grove High School |

| POWER 5 COACHES UNDER 40 | | | |
|--------------------------|------------------|----------------|------------|
| Age | Name | School | Birthdate |
| 36 | Jacie Hoyt | Oklahoma State | 4/2/1987 |
| 38 | Kelly Rae Finley | Florida | 4/27/1985 |
| 39 | Katie Gearlds | Purdue | 10/26/1984 |
| 39 | Carolyn Kieger | Penn State | 8/17/1983 |

| GEARLDS IN THE PURDUE RECORD BOOK | | | |
|-----------------------------------|------|-------|--------------------|
| Stat | Rank | Total | Year/Game |
| Single Game Points | 1 | 41 | Wisconsin, 2/18/07 |
| Season Points | T1 | 707 | 2006-07 |
| Career Points | 4 | 1,974 | 2004-07 |
| Career Average | 4 | 14.8 | 2004-07 |
| Season 10+ Point Games | 3 | 33 | 2006-07 |
| Career 10+ Point Games | 4 | 102 | 2004-07 |
| Season 30+ Point Games | 2 | 4 | 2006-07 |
| Career 30+ Point Games | 2 | 6 | 2004-07 |
| Season Field Goals | 2 | 250 | 2006-07 |
| Career Field Goals | 3 | 711 | 2004-07 |
| Season 3-Pointers | T1 | 88 | 2006-07 |
| Career 3-Pointers | 3 | 238 | 2004-07 |
| Season Asst/TO | 1 | 2.57 | 2005-06 |
| Career Asst/TO | T2 | 1.64 | 2004-07 |
| Season Minutes | 1 | 1,359 | 2006-07 |
| Career Minutes | 2 | 4,475 | 2004-07 |

KG ERA BESTS**MOST POINTS SCORED**

| | | | |
|----|-----|----------------|----------|
| 1. | 101 | vs. Denver | 12/12/21 |
| 2. | 100 | vs. SIUE | 11/17/22 |
| 3. | 90 | vs. Murray St. | 11/13/22 |
| 4. | 89 | vs. Illinois | 1/20/22 |
| 5. | 87 | Syracuse | 11/30/22 |

MOST POINTS ALLOWED

| | | | |
|----|----|--------------|----------|
| 1. | 92 | at UCLA | 11/6/23 |
| 2. | 86 | vs. Maryland | 12/08/21 |
| | 83 | vs. Indiana | 02/19/23 |
| 4. | 83 | vs. Iowa | 12/29/22 |
| 5. | 81 | vs. Nebraska | 1/30/22 |

FEWEST POINTS ALLOWED

| | | | |
|----|----|--------------------|----------|
| 1. | 50 | vs. Southern | 11/12/23 |
| 2. | 51 | vs. Illinois State | 12/11/22 |
| 3. | 52 | vs. Florida | 11/20/23 |
| | 52 | at Illinois | 1/26/23 |
| | 52 | vs. Georgia Tech | 12/1/21 |

LARGEST MARGIN OF VICTORY

| | | | |
|----|----|----------------|----------|
| 1. | 42 | vs. SIUE | 11/17/22 |
| 2. | 33 | vs. North Ala. | 12/21/21 |
| | 33 | vs. Denver | 12/12/21 |
| 4. | 29 | vs. Murray St. | 11/13/22 |
| 5. | 24 | vs. Penn St. | 2/22/23 |

MOST FIELD GOALS MADE

| | | | |
|----|----|----------------|----------|
| 1. | 38 | vs. Denver | 12/12/21 |
| 2. | 37 | vs. North Ala. | 12/21/21 |
| 3. | 35 | vs. SIUE | 11/17/22 |
| | 35 | vs. Murray St. | 11/13/22 |
| 5. | 34 | vs. Harvard | 11/24/22 |

HIGHEST FIELD GOAL PERCENTAGE

| | | | |
|----|------|-------------------|----------|
| 1. | .633 | vs. Denver | 12/12/21 |
| 2. | .607 | vs. Harvard | 11/24/22 |
| 3. | .569 | vs. Southern Ill. | 3/16/22 |
| 4. | .565 | vs. SIUE | 11/17/22 |
| 5. | .552 | vs. North Ala. | 12/21/21 |

LOWEST FIELD GOAL PERCENTAGE ALLOWED

| | | | |
|----|------|------------------|----------|
| 1. | .275 | vs. Minnesota | 1/21/23 |
| 2. | .281 | vs. Southern | 11/12/23 |
| 3. | .293 | vs. Illinois St. | 12/11/22 |
| 4. | .317 | vs. Indiana St. | 11/20/22 |
| 5. | .318 | vs. North Ala. | 12/21/21 |

MOST 3-POINTERS MADE

| | | | |
|----|----|-----------------|----------|
| 1. | 15 | vs. Illinois | 1/20/22 |
| 2. | 13 | vs. Ohio St. | 1/29/23 |
| | 13 | vs. Denver | 12/12/21 |
| 4. | 12 | vs. Florida St. | 11/25/22 |
| | 12 | vs. Maryland | 12/8/21 |
| | 12 | vs. Florida St. | 11/27/21 |

HIGHEST 3-POINT PERCENTAGE

| | | | |
|----|------|---------------------|----------|
| 1. | .652 | vs. Illinois | 1/20/22 |
| 2. | .600 | vs. St. John's (NY) | 3/16/23 |
| 3. | .500 | vs. Denver | 12/12/21 |
| 4. | .474 | vs. Indiana St. | 11/20/22 |
| | .474 | vs. Illinois St. | 11/17/21 |

FEWEST 3-POINTERS ALLOWED

| | | | |
|----|---|-------------------|----------|
| 1. | 0 | vs. Rutgers | 1/2/22 |
| | 0 | vs. Iowa | 1/13/22 |
| 3. | 1 | vs. Marshall | 11/22/21 |
| | 1 | vs. Illinois | 2/17/22 |
| 5. | 2 | vs. West Virginia | 11/25/21 |
| | 2 | vs. Michigan St. | 1/9/22 |

LOWEST 3-POINT PERCENTAGE ALLOWED

| | | | |
|----|------|------------------|----------|
| 1. | .000 | vs. Rutgers | 1/2/22 |
| | .000 | vs. Iowa | 1/13/22 |
| 3. | .059 | vs. Marshall | 11/22/21 |
| 4. | .077 | vs. Illinois | 2/17/22 |
| 5. | .111 | vs. Michigan St. | 1/9/22 |

MOST FREE THROWS MADE

| | | | |
|----|----|------------------|----------|
| 1. | 26 | vs. Northwestern | 2/12/23 |
| 2. | 25 | vs. SIUE | 11/17/22 |
| 3. | 22 | vs. Western Ky. | 11/10/21 |
| 4. | 21 | vs. Marshall | 11/22/21 |
| | 21 | vs. Southern | 11/12/23 |

MOST ASSISTS

| | | | |
|----|----|-------------------|----------|
| 1. | 26 | vs. North Ala. | 12/21/21 |
| 2. | 25 | vs. Murray St. | 11/13/22 |
| 3. | 24 | vs. Western Mich. | 11/14/21 |
| 4. | 23 | vs. Miami (OH) | 12/19/21 |
| | 23 | vs. Denver | 12/12/21 |

FEWEST ASSISTS ALLOWED

| | | | |
|----|---|------------------|----------|
| 1. | 5 | vs. Southern | 11/12/23 |
| | 5 | vs. Florida | 11/20/23 |
| 3. | 6 | vs. Marshall | 11/22/21 |
| 4. | 7 | vs. Illinois St. | 11/17/21 |
| | 7 | vs. Rutgers | 1/2/22 |
| | 7 | vs. Syracuse | 11/30/22 |

MOST REBOUNDS

| | | | |
|----|----|------------------|----------|
| 1. | 50 | vs. Michigan St. | 12/5/22 |
| 2. | 47 | vs. North Ala. | 12/21/21 |
| 3. | 45 | vs. Illinois | 2/17/22 |
| 4. | 44 | vs. Syracuse | 11/30/22 |
| | 44 | vs. Southern | 11/12/23 |

MOST DEFENSIVE REBOUNDS

| | | | |
|----|----|-------------------|----------|
| 1. | 39 | vs. Michigan St. | 12/5/22 |
| 2. | 37 | vs. Southern | 11/12/23 |
| 3. | 35 | vs. Syracuse | 11/30/22 |
| 4. | 34 | vs. Southern Ill. | 3/16/22 |
| | 34 | vs. North Ala. | 12/21/21 |

MOST OFFENSIVE REBOUNDS

| | | | |
|----|----|-------------------|----------|
| 1. | 18 | vs. Illinois | 2/17/22 |
| | 18 | vs. Miami (OH) | 12/19/21 |
| 3. | 17 | vs. West Virginia | 11/25/21 |
| 4. | 16 | vs. Marshall | 11/22/21 |
| 5. | 15 | vs. Wisconsin | 3/2/23 |
| | 15 | vs. Nebraska | 1/30/22 |

MOST STEALS

| | | | |
|----|----|------------------|----------|
| 1. | 16 | vs. Wisconsin | 1/1/23 |
| 2. | 14 | vs. SIUE | 11/17/22 |
| 3. | 13 | vs. Northwestern | 1/14/23 |
| | 13 | vs. Denver | 12/12/21 |
| 5. | 12 | vs. Wisconsin | 2/27/22 |
| | 12 | vs. Rutgers | 2/20/22 |
| | 12 | vs. Western Ky. | 11/10/21 |

MOST BLOCKS

| | | | |
|----|---|------------------|----------|
| 1. | 9 | vs. Iowa | 3/3/23 |
| | 9 | vs. Indiana | 2/6/22 |
| 3. | 8 | vs. Northwestern | 2/24/22 |
| | 8 | vs. Illinois St. | 11/17/21 |
| 5. | 7 | vs. Rutgers | 2/9/23 |

FEWEST TURNOVERS

| | | | |
|----|---|------------------|----------|
| 1. | 7 | vs. Murray State | 11/13/22 |
| 2. | 8 | vs. Minnesota | 1/21/23 |
| | 8 | at Texas A&M | 12/21/22 |
| 4. | 9 | vs. Texas A&M | 11/16/23 |
| | 9 | vs. Minnesota | 1/27/22 |
| | 9 | at Michigan | 1/24/22 |

MOST POINTS SCORED BY A PLAYER

| | | | |
|----|----|---------------------------------|----------|
| 1. | 31 | Lasha Petree, vs. Syracuse | 11/30/22 |
| 2. | 29 | Abbey Ellis, vs. SIUE | 11/17/22 |
| 3. | 27 | Brooke Moore, vs. Southern Ill. | 3/16/22 |
| 4. | 26 | Abbey Ellis, vs. Ohio St. | 1/29/23 |
| | 26 | Lasha Petree, vs. Minnesota | 2/26/23 |

MOST FIELD GOALS MADE BY A PLAYER

| | | | |
|----|----|------------------------------------|----------|
| 1. | 13 | Lasha Petree, vs. Syracuse | 11/30/22 |
| 2. | 10 | Brooke Moore, vs. Southern Ill. | 3/16/22 |
| | 10 | Lasha Petree, vs. Minnesota | 2/26/23 |
| 4. | 9 | 9x last Abbey Ellis, vs. Texas A&M | 11/16/23 |

MOST 3-POINTERS MADE BY A PLAYER

| | | | |
|----|---|-----------------------------------|----------|
| 1. | 7 | Cassidy Hardin, vs. Denver | 12/12/21 |
| 2. | 6 | Abbey Ellis, vs. Illinois | 1/20/22 |
| | 6 | Cassidy Hardin, vs. Florida St. | 11/27/21 |
| | 6 | Brooke Moore, vs. Maryland | 12/8/21 |
| 5. | 5 | 6x last Lasha Petree, vs. Indiana | 2/19/23 |

MOST FREE THROWS MADE BY A PLAYER

| | | | |
|----|---|------------------------------|----------|
| 1. | 9 | Abbey Ellis, vs. Western Ky. | 11/10/21 |
| | 9 | Jeanae Terry, vs. Miami (OH) | 12/10/21 |
| 3. | 8 | Abbey Ellis, vs. SIUE | 11/17/22 |
| | 8 | Caitlyn Harper, vs. Nebraska | 1/18/23 |
| | 8 | Ava Learn, vs. Oklahoma St. | 11/26/22 |

MOST REBOUNDS BY A PLAYER

| | | | |
|----|----|-----------------------------|----------|
| 1. | 17 | Jeanae Terry, vs. Wisconsin | 2/13/22 |
| | 17 | Jeanae Terry, vs. Illinois | 2/17/22 |
| 3. | 14 | Jeanae Terry, vs. Illinois | 1/26/23 |
| 4. | 13 | Jeanae Terry, vs. Ohio St. | 12/5/21 |
| | 13 | Jeanae Terry, vs. Harvard | 11/24/22 |

MOST ASSISTS BY A PLAYER

| | | | |
|----|----|-------------------------------------|----------|
| 1. | 12 | Jeanae Terry, vs. Minnesota | 1/27/22 |
| | 12 | Jeanae Terry, vs. Northwestern | 2/24/22 |
| | 12 | Jeanae Terry, vs. Indiana St. | 11/20/22 |
| 4. | 11 | Abbey Ellis, vs. Western Mich. | 11/14/21 |
| 5. | 10 | 7x last Jeanae Terry, vs. Texas A&M | 11/16/23 |

MOST STEALS BY A PLAYER

| | | | |
|----|---|--------------------------------|----------|
| 1. | 8 | Jeanae Terry, vs. Penn St. | 2/22/23 |
| 2. | 6 | Madison Layden, vs. Rutgers | 2/20/22 |
| 3. | 5 | Abbey Ellis, vs. Western Mich. | 11/14/21 |
| | 5 | Jeanae Terry, vs. Nebraska | 1/30/22 |
| | 5 | Jeanae Terry, vs. Wisconsin | 1/1/23 |
| | 5 | Jeanae Terry, vs. Wisconsin | 3/2/23 |

MOST BLOCKS BY A PLAYER

| | | | |
|----|---|----------------------------------|----------|
| 1. | 4 | Caitlyn Harper, vs. Marshall | 11/10/22 |
| | 4 | Caitlyn Harper, vs. Michigan | 1/10/23 |
| | 4 | Rickie Woltman, vs. Illinois St. | 11/17/21 |
| 4. | 3 | 9x last Rickie Woltman, vs. Iowa | 3/3/23 |

MOST POINTS ALLOWED BY A PLAYER

| | | | |
|----|----|----------------------------------|----------|
| 1. | 32 | Naz Hillmon, at Michigan | 1/24/22 |
| 2. | 31 | Makenna Marisa, Penn St. | 2/9/22 |
| 3. | 27 | Monika Czinano, Iowa | 1/13/22 |
| | 27 | Lauren Van Kleunen, at Marquette | 3/21/22 |
| 5. | 26 | 4x last Teisha Hyman, Syracuse | 11/30/22 |

KG'S RECORD VS. OPPONENTS

| | |
|--------------------------------|-------|
| Illinois | 3-0 |
| Indiana | 0-4 |
| Iowa | 0-3 |
| Maryland | 0-2 |
| Michigan | 0-2 |
| Michigan State | 2-1 |
| Minnesota | 2-1 |
| Nebraska | 0-2 |
| Northwestern | 2-2 |
| Ohio State | 1-1 |
| Penn State | 2-1 |
| Rutgers | 3-0 |
| Wisconsin | 2-2 |
| Big Ten | 17-21 |
| Florida State | 1-1 |
| Georgia Tech | 1-0 |
| Notre Dame | |
| Syracuse | 1-0 |
| ACC | 3-1 |
| Oklahoma State | 1-0 |
| West Virginia | 0-1 |
| Big 12 | 1-1 |
| UCLA | 0-1 |
| Pac-12 | 0-1 |
| Florida | 0-1 |
| Georgia | 0-1 |
| Texas A&M | 2-0 |
| SEC | 2-2 |
| Marquette | 0-1 |
| St. John's | 0-1 |
| Big East | 0-2 |
| Miami | 1-0 |
| Western Michigan | 1-0 |
| MAC | 2-0 |
| Illinois State | 2-0 |
| Indiana State | 1-0 |
| Murray State | 1-0 |
| Southern Illinois | 1-0 |
| Valparaiso | semo |
| Missouri Valley | 5-0 |
| Denver | 1-0 |
| Summit | 1-0 |
| North Alabama | 1-0 |
| ASUN | 1-0 |
| Harvard | 1-0 |
| Ivy | 1-0 |
| Marshall | 2-0 |
| Sun Belt | 2-0 |
| Western Kentucky | 1-0 |
| C-USA | 1-0 |
| Southeast Missouri State | |
| Southern Illinois Edwardsville | 1-0 |
| Southern Indiana | |
| Ohio Valley | 1-0 |
| Southern | 1-0 |
| SWAC | 1-0 |
| Dayton | 0-1 |
| A-10 | 0-1 |

TEAM GAME-BY-GAME COMPARISON

| |
|------------------|
| Purdue |
| Southern Indiana |
| Purdue |
| Dayton |
| Purdue |
| Valparaiso |
| Purdue |
| SEMO |
| Purdue |
| Minnesota |
| Purdue |
| Notre Dame |
| Purdue |
| Indiana State |
| Purdue |
| Wisconsin |
| Purdue |
| Rutgers |
| Purdue |
| Maryland |
| Purdue |
| Iowa |
| Purdue |
| Penn State |
| Purdue |
| Indiana |
| Purdue |
| Michigan State |
| Purdue |
| Ohio State |
| Purdue |
| Nebraska |
| Purdue |
| Illinois |
| Purdue |
| Indiana |
| Purdue |
| Northwestern |
| Purdue |
| Nebraska |
| Purdue |
| Michigan State |
| Purdue |
| Wisconsin |
| Purdue |
| Penn State |
| Purdue |
| Michigan |
| Purdue |
| |
| Purdue |
| |
| Purdue |
| |
| Purdue |

TEAM STATISTICS BREAKDOWN

| All Games | Record | FG-FGA | FG% | 3P-3PA | 3% | FT-FTA | FT% | Off. | Def. | Tot. | Avg. | F | DQ | Ast. | TO | Blk. | Stl. | Pts. | Avg. |
|-----------|--------|---------|------|--------|------|--------|------|------|------|------|------|----|----|------|----|------|------|------|------|
| All Games | 2-3 | 103-273 | .377 | 23-97 | .237 | 65-79 | .823 | 46 | 122 | 168 | 33.6 | 71 | 1 | 54 | 82 | 9 | 32 | 294 | 58.8 |
| | | 115-299 | .385 | 29-86 | .337 | 58-79 | .734 | 66 | 123 | 189 | 37.8 | 86 | 1 | 60 | 80 | 17 | 49 | 317 | 63.4 |
| Home | 2-0 | 47-109 | .431 | 11-35 | .314 | 34-42 | .810 | 15 | 60 | 75 | 37.5 | 30 | 0 | 33 | 30 | 5 | 14 | 139 | 69.5 |
| | | 36-113 | .319 | 10-33 | .303 | 26-39 | .667 | 22 | 47 | 69 | 34.5 | 39 | 1 | 17 | 36 | 9 | 20 | 108 | 54.0 |
| Away | 0-1 | 17-50 | .340 | 4-21 | .190 | 11-14 | .786 | 8 | 14 | 22 | 22.0 | 13 | 0 | 8 | 19 | 2 | 6 | 49 | 49.0 |
| | | 35-64 | .547 | 13-28 | .464 | 9-12 | .750 | 16 | 24 | 40 | 40.0 | 18 | 0 | 29 | 15 | 4 | 10 | 92 | 92.0 |
| Neutral | 0-2 | 39-114 | .342 | 8-41 | .195 | 20-23 | .870 | 23 | 48 | 71 | 35.5 | 28 | 1 | 13 | 33 | 2 | 12 | 106 | 53.0 |
| | | 44-122 | .361 | 6-25 | .240 | 23-28 | .821 | 28 | 52 | 80 | 40.0 | 29 | 0 | 14 | 29 | 4 | 19 | 117 | 58.5 |
| Won | 2-0 | 47-109 | .431 | 11-35 | .314 | 34-42 | .810 | 15 | 60 | 75 | 37.5 | 30 | 0 | 33 | 30 | 5 | 14 | 139 | 69.5 |
| | | 36-113 | .319 | 10-33 | .303 | 26-39 | .667 | 22 | 47 | 69 | 34.5 | 39 | 1 | 17 | 36 | 9 | 20 | 108 | 54.0 |
| Lost | 0-3 | 56-164 | .341 | 12-62 | .194 | 31-37 | .838 | 31 | 62 | 93 | 31.0 | 41 | 1 | 21 | 52 | 4 | 18 | 155 | 51.7 |
| | | 79-186 | .425 | 19-53 | .358 | 32-40 | .800 | 44 | 76 | 120 | 40.0 | 47 | 0 | 43 | 44 | 8 | 29 | 209 | 69.7 |

| Big Ten | Record | FG-FGA | FG% | 3P-3PA | 3% | FT-FTA | FT% | Off. | Def. | Tot. | Avg. | F | DQ | Ast. | TO | Blk. | Stl. | Pts. | Avg. |
|-----------|--------|--------|-----|--------|----|--------|-----|------|------|------|------|---|----|------|----|------|------|------|------|
| All Games | | | | | | | | | | | | | | | | | | | |

Home

Away

| Non-Conference Record | Record | FG-FGA | FG% | 3P-3PA | 3% | FT-FTA | FT% | Off. | Def. | Tot. | Avg. | F | DQ | Ast. | TO | Blk. | Stl. | Pts. | Avg. |
|-----------------------|--------|---------|------|--------|------|--------|------|------|------|------|------|----|----|------|----|------|------|------|------|
| All Games | 2-3 | 103-273 | .377 | 23-97 | .237 | 65-79 | .823 | 46 | 122 | 168 | 33.6 | 71 | 1 | 54 | 82 | 9 | 32 | 294 | 58.8 |
| | | 115-299 | .385 | 29-86 | .337 | 58-79 | .734 | 66 | 123 | 189 | 37.8 | 86 | 1 | 60 | 80 | 17 | 49 | 317 | 63.4 |

| Current Streak Record | Record | FG-FGA | FG% | 3P-3PA | 3% | FT-FTA | FT% | Off. | Def. | Tot. | Avg. | F | DQ | Ast. | TO | Blk. | Stl. | Pts. | Avg. |
|-----------------------|--------|--------|------|--------|------|--------|------|------|------|------|------|----|----|------|----|------|------|------|------|
| Overall | 0-2 | 39-114 | .342 | 8-41 | .195 | 20-23 | .870 | 23 | 48 | 71 | 35.5 | 28 | 1 | 13 | 33 | 2 | 12 | 106 | 53.0 |
| | | 44-122 | .361 | 6-25 | .240 | 23-28 | .821 | 28 | 52 | 80 | 40.0 | 29 | 0 | 14 | 29 | 4 | 19 | 117 | 58.5 |

| Month | Record | FG-FGA | FG% | 3P-3PA | 3% | FT-FTA | FT% | Off. | Def. | Tot. | Avg. | F | DQ | Ast. | TO | Blk. | Stl. | Pts. | Avg. |
|----------|--------|---------|------|--------|------|--------|------|------|------|------|------|----|----|------|----|------|------|------|------|
| November | 2-3 | 103-273 | .377 | 23-97 | .237 | 65-79 | .823 | 46 | 122 | 168 | 33.6 | 71 | 1 | 54 | 82 | 9 | 32 | 294 | 58.8 |
| | | 115-299 | .385 | 29-86 | .337 | 58-79 | .734 | 66 | 123 | 189 | 37.8 | 86 | 1 | 60 | 80 | 17 | 49 | 317 | 63.4 |

December

January

February

March

| Ranked/UR | Record | FG-FGA | FG% | 3P-3PA | 3% | FT-FTA | FT% | Off. | Def. | Tot. | Avg. | F | DQ | Ast. | TO | Blk. | Stl. | Pts. | Avg. |
|--------------|--------|--------|------|--------|------|--------|------|------|------|------|------|----|----|------|----|------|------|------|------|
| vs. Ranked | 0-1 | 17-50 | .340 | 4-21 | .190 | 11-14 | .786 | 8 | 14 | 22 | 22.0 | 13 | 0 | 8 | 19 | 2 | 6 | 49 | 49.0 |
| | | 35-64 | .547 | 13-28 | .464 | 9-12 | .750 | 16 | 24 | 40 | 40.0 | 18 | 0 | 29 | 15 | 4 | 10 | 92 | 92.0 |
| vs. Unranked | 2-2 | 86-223 | .386 | 19-76 | .250 | 54-65 | .831 | 38 | 108 | 146 | 36.5 | 58 | 1 | 46 | 63 | 7 | 26 | 245 | 61.3 |
| | | 80-235 | .340 | 16-58 | .276 | 49-67 | .731 | 50 | 99 | 149 | 37.3 | 68 | 1 | 31 | 65 | 13 | 39 | 225 | 56.3 |

| 5-Game | Record | FG-FGA | FG% | 3P-3PA | 3% | FT-FTA | FT% | Off. | Def. | Tot. | Avg. | F | DQ | Ast. | TO | Blk. | Stl. | Pts. | Avg. |
|--------|--------|---------|------|--------|------|--------|------|------|------|------|------|----|----|------|----|------|------|------|------|
| 1-5 | 2-3 | 103-273 | .377 | 23-97 | .237 | 65-79 | .823 | 46 | 122 | 168 | 33.6 | 71 | 1 | 54 | 82 | 9 | 32 | 294 | 58.8 |
| | | 115-299 | .385 | 29-86 | .337 | 58-79 | .734 | 66 | 123 | 189 | 37.8 | 86 | 1 | 60 | 80 | 17 | 49 | 317 | 63.4 |

6-10

11-15

16-20

21-25

26-30

31-35

36-40

| Postseason | Record | FG-FGA | FG% | 3P-3PA | 3% | FT-FTA | FT% | Off. | Def. | Tot. | Avg. | F | DQ | Ast. | TO | Blk. | Stl. | Pts. | Avg. |
|------------|--------|--------|-----|--------|----|--------|-----|------|------|------|------|---|----|------|----|------|------|------|------|
| Overall | | | | | | | | | | | | | | | | | | | |

BIG Tourney

NCAA



SCORING BY QUARTERS

 PURDUE WHEN

P | | 14



TEAM HIGHS & LOWS

| Stat | Purdue High | Purdue Low | Opp. High | Opp. Low |
|-----------------------|---|--|--|--|
| Points | 72 Texas A&M (11/16/2023) | 49 2x last vs Florida (N) (11/20/2023) | 92 at UCLA (11/06/2023) | 50 Southern U. (11/12/2023) |
| Field Goals Made | 27 Texas A&M (11/16/2023) | 17 at UCLA (11/06/2023) | 35 at UCLA (11/06/2023) | 16 Southern U. (11/12/2023) |
| Field Goal Attempts | 58 Texas A&M (11/16/2023) | 50 at UCLA (11/06/2023) | 65 vs Georgia (N) (11/22/2023) | 56 Texas A&M (11/16/2023) |
| Field Goal Percentage | .466 (27-58) Texas A&M (11/16/2023) | .316 (18-57) vs Florida (N) (11/20/2023) | .547 (35-64) at UCLA (11/06/2023) | .281 (16-57) Southern U. (11/12/2023) |
| 3-Pointers Made | 6 vs Georgia (N) (11/22/2023) | 2 vs Florida (N) (11/20/2023) | 13 at UCLA (11/06/2023) | 2 vs Georgia (N) (11/22/2023) |
| 3-Pointers Attempted | 22 vs Florida (N) (11/20/2023) | 15 Texas A&M (11/16/2023) | 28 at UCLA (11/06/2023) | 9 vs Georgia (N) (11/22/2023) |
| 3-Point Percentage | .333 (5-15) Texas A&M (11/16/2023) | .091 (2-22) vs Florida (N) (11/20/2023) | .464 (13-28) at UCLA (11/06/2023) | .222 (2-9) vs Georgia (N) (11/22/2023) |
| Free Throws Made | 21 Southern U. (11/12/2023) | 9 vs Georgia (N) (11/22/2023) | 14 Southern U. (11/12/2023) | 9 at UCLA (11/06/2023) |
| Free Throws Attempted | 26 Southern U. (11/12/2023) | 10 vs Georgia (N) (11/22/2023) | 21 Southern U. (11/12/2023) | 12 at UCLA (11/06/2023) |
| Free Throw Percentage | .900 (9-10) vs Georgia (N) (11/22/2023) | .786 (11-14) at UCLA (11/06/2023) | .923 (12-13) vs Florida (N) (11/20/2023) | .667 (14-21) Southern U. (11/12/2023) |
| Rebounds | 44 Southern U. (11/12/2023) | 22 at UCLA (11/06/2023) | 43 vs Georgia (N) (11/22/2023) | 28 Southern U. (11/12/2023) |
| Assists | 19 Southern U. (11/12/2023) | 5 vs Florida (N) (11/20/2023) | 29 at UCLA (11/06/2023) | 5 2x last vs Florida (N) (11/20/2023) |
| Steals | 7 Texas A&M (11/16/2023) | 6 vs Georgia (N) (11/22/2023) | 15 vs Georgia (N) (11/22/2023) | 4 vs Florida (N) (11/20/2023) |
| Blocks | 3 Texas A&M (11/16/2023) | 1 vs Georgia (N) (11/22/2023) | 6 Texas A&M (11/16/2023) | 2 2x last vs Georgia (N) (11/22/2023) |
| Turnovers | 21 Southern U. (11/12/2023) | 9 Texas A&M (11/16/2023) | 20 Texas A&M (11/16/2023) | 14 vs Florida (N) (11/20/2023) |
| Fouls | 16 Southern U. (11/12/2023) | 13 vs Georgia (N) (11/22/2023) | 24 Southern U. (11/12/2023) | 13 vs Georgia (N) (11/22/2023) |

INDIVIDUAL HIGHS

| Stat | Purdue Ind. High | Opponent Ind. High |
|-----------------------|--|--|
| Points | 21, Madison Layden vs. Southern (11/12/2023) | 20, Lauren Betts/Londynn Jones, at UCLA, 11/6/23 |
| Field Goals Made | 9, Abbey Ellis vs Texas A&M (11/16/2023) | 9, Lauren Betts, at UCLA, 11/6/23 |
| Field Goals Attempted | 18, Abbey Ellis vs Texas A&M (11/16/2023) | 15, 2x last Leilani Correa, vs. Florida (11/20/2023) |
| 3-Pointers Made | 4, 2x last Madison Layden, vs. Georgia (11/22/2023) | 6, Londynn Jones, at UCLA, 11/6/23 |
| 3-Pointers Attempted | 9, Abbey Ellis, vs. Georgia (11/22/2023) | 11, Londynn Jones, at UCLA, 11/6/23 |
| Free Throws Made | 7, 3x last Abbey Ellis, vs. Florida (11/20/2023) | 7, Aliyah Matharu, vs. Florida (11/20/2023) |
| Free Throws Attempted | 9, Abbey Ellis, vs. Southern (11/12/2023) | 8, Lauren Ware vs Texas A&M (11/16/2023) |
| Rebounds | 11, 2x last Caitlyn Harper vs Texas A&M (11/16/2023) | 13, Lauern Ware vs Texas A&M (11/16/2023) |
| Assists | 10, Jeanae Terry vs Texas A&M (11/16/2023) | 10, Kiki Rice, at UCLA (11/6/2023) |
| Steals | 3, 4x last Abbey Ellis, vs. Florida (11/20/2023) | 4, 2x last Zoesha Smith, vs. Georgia (11/22/2023) |
| Blocks | 1, 9 times | 4, Lauren Ware vs Texas A&M (11/16/2023) |

RESULTS/LEADERS

| Date | P / O | Opponent | W/L | Score | High Scorer | High Rebounds | High Assists | High Steals | High Blocks | Attend |
|------|---------|-------------------|-----|-------|------------------|---------------|--------------|-----------------|---------------------|--------|
| N6 | -/4 | at UCLA | L | 92-49 | 10, Ellis/Harper | 7, Terry | 4, Terry | 1, 5 tied | 1, Harper/Stevenson | 2,157 |
| N12 | -/- | Southern | W | 67-50 | 21, Layden | 11, Terry | 7, Terry | 3, Ellis/Layden | 1, Stevenson/Jones | 5,002 |
| N16 | -/RV | Texas A&M | W | 72-58 | 20, Jones/Ellis | 11, Harper | 10, Terry | 3, Terry | 1, 3 tied | 5,223 |
| N20 | Bahamas | vs. Florida | W | 52-49 | 14, Ellis | 6, Stevenson | 2, Terry | 3, Ellis | 1, Stevenson | 437 |
| N22 | Bahamas | vs. Georgia | W | 65-57 | 14, Layden | 6, Ellis | 4, Terry | 2, Harper | 1, Harper | 278 |
| N26 | -/- | Southern Indiana | | | | | | | | |
| D1 | -/- | at Dayton | | | | | | | | |
| D3 | -/- | Valparaiso | | | | | | | | |
| D6 | -/- | SEMO | | | | | | | | |
| D10 | Big Ten | at Minnesota | | | | | | | | |
| D17 | -/- | at Notre Dame | | | | | | | | |
| D20 | -/- | Indiana State | | | | | | | | |
| D30 | Big Ten | Wisconsin | | | | | | | | |
| J2 | Big Ten | Rutgers | | | | | | | | |
| J6 | Big Ten | at Maryland | | | | | | | | |
| J10 | Big Ten | Iowa | | | | | | | | |
| J18 | Big Ten | at Penn State | | | | | | | | |
| J21 | Big Ten | Indiana | | | | | | | | |
| J24 | Big Ten | at Michigan State | | | | | | | | |
| J28 | Big Ten | Ohio State | | | | | | | | |
| J31 | Big Ten | at Nebraska | | | | | | | | |
| F5 | Big Ten | Illinois | | | | | | | | |
| F11 | Big Ten | at Indiana | | | | | | | | |
| F14 | Big Ten | at Northwestern | | | | | | | | |
| F17 | Big Ten | Nebraska | | | | | | | | |
| F25 | Big Ten | at Wisconsin | | | | | | | | |
| F28 | Big Ten | Penn State | | | | | | | | |
| M3 | Big Ten | at Michigan | | | | | | | | |

LEADERBOARD

| Led in Points | 23-24 | Career | Led in Rebounds | 23-24 | Career | Led in Assists | 23-24 | Career | Led in Steals | 23-24 | Career | Led in Blocks | 23-24 | Career |
|----------------|-------|--------|-----------------------|-------|--------|----------------|-------|--------|-----------------------|-------|--------|-----------------------|-------|--------|
| Abbey Ellis | 3 | 22 | Jeanae Terry | 2 | 39 | Jeanae Terry | 5 | 55 | Madison Layden | 1 | 32 | Jayla Smith | 1 | 19 |
| Madison Layden | 2 | 12 | Madison Layden | | 9 | Madison Layden | | 20 | Jeanae Terry | 2 | 32 | Madison Layden | 1 | 18 |
| Caitlyn Harper | 1 | 5 | Caitlyn Harper | 1 | 4 | Abbey Ellis | | 5 | Abbey Ellis | 3 | 13 | Caitlyn Harper | 2 | 12 |
| Jayla Smith | | 2 | Abbey Ellis | 1 | 4 | | | | Jayla Smith | | 10 | Jeanae Terry | | 11 |
| Rashunda Jones | 1 | 1 | Mary Ashley Stevenson | 1 | 1 | | | | Caitlyn Harper | 2 | 5 | Abbey Ellis | | 5 |
| | | | | | | | | | Mary Ashley Stevenson | 1 | 1 | Mary Ashley Stevenson | 3 | 3 |
| | | | | | | | | | McKenna Layden | 1 | 1 | Rashunda Jones | 2 | 2 |



THE LAST TIME A PLAYER

INDIVIDUAL SCORING

| | |
|---|--|
| Scored 20 Points: | 20, Rashunda Jones/Abbey Ellis vs. Texas A&M (11/16/23) |
| Scored 30 Points: | 31, Lasha Petree vs. Syracuse (11/30/22) |
| Scored 35 Points: | 38, Brittany Rayburn at Minnesota (1/12/12) |
| Scored 40 Points: | 41, Katie Gearlds at Wisconsin (2/18/07) |
| Scored 20 Points in Back-to-Back Games: | Lasha Petree 23 vs. Penn State (2/22/23), 26 at Minnesota (2/26/23) |
| Scored 20 Points in Three Straight Games: | Lasha Petree 23 vs. Indiana (2/19/23), 23 vs. Penn State (2/22/23) 26 at Minnesota (2/26/23) |
| Two Players w/ 20+: | 20, Rashunda Jones and Abbey Ellis vs. Texas A&M (11/16/23) |
| Three Players w/ 20+: | Whitney Bays (24), KK Houser (21), Liza Clemons (20) & Courtney Moses (20) vs. Central Michigan (12/28/13) |
| Four Players w/ 20+: | Whitney Bays (24), KK Houser (21), Liza Clemons (20) & Courtney Moses (20) vs. Central Michigan (12/28/13) |
| Five Players in Double Figures: | Karissa McLaughlin (23), Kayana Traylor (15), Ae'Rianna Harris (13), Dominique Oden (12), Jenelle Grant (11) vs. Illinois (1/17/20) |
| 10+ Points in 10 Straight Games: | 11, Lasha Petree (11/10/22-12/11/22) |
| 10+ Points in 20 Straight Games: | 35, Shereka Wright (11/29/01 - 12/29/02) |
| 10+ Points in 30 Straight Games: | 35, Shereka Wright (11/29/01 - 12/29/02) |

INDIVIDUAL DOUBLE-DOUBLES

| | |
|-------------------------------------|--|
| Double-Double: | 14 points, 11 rebounds, Caitlyn Harper vs. Texas A&M (11/16/23) |
| Points-Rebounds: | 14-11, Caitlyn Harper vs. Texas A&M (11/16/23) |
| Points-Assists: | 19-11 Karissa McLaughlin at Wisconsin (12/31/18) |
| Points-Steals: | 27-12, Joy Holmes vs. Minnesota (1/13/89) |
| Points-Blocks: | 12-11, Danielle Campbell vs. Butler (11/17/07) |
| Freshman: | 10-11 ast, Karissa McLaughlin vs. PSU (1/28/18) |
| Non-Point: | 10 reb, 10 ast, Jeanae Terry vs. Penn State (2/22/23) |
| 20-10 Game: | 21 pts, 12 rebs, Ae'Rianna Harris vs. PSU (1/26/20) |
| 30-10 Game: | 30 pts, 10 reb, Stephanie White vs. Washington (3/14/98) |
| 20-20 Game: | 29 pts, 20 reb, Joy Holmes at Wisconsin (1/27/91) |
| Consecutive Double-Doubles: | 2, Jeanae Terry (11/10-13/22) |
| in Three Straight Games: | 4, Fatou Diagne, (1/18-1/31) |
| in Five Straight Games: | 9, Whitney Bays (12/20/14 - 1/19/15) |
| Two Players with a Double-Double: | 11 pts, 12 reb, Fatou Diagne, 15 pts, 10 reb, Ae'Rianna Harris, vs. Michigan State (3/5/20) |
| Three Players with a Double-Double: | Ae'Rianna Harris (14 pts, 17 rebs) & Tamara Farquhar (13 pts, 14 rebs), vs. Western Illinois (11/17/20) |

INDIVIDUAL TRIPLE-DOUBLES

| | |
|----------------|--|
| Triple-Double: | 10 pts, 11 rebs, 12 assts - Jeanae Terry - vs. Minnesota (1/27/22) |
| Before that | 11 pts, 12 rebs, 10 assts - Jeanae Terry - vs. Miami (12/19/21) |
| Before that | 12 pts, 11 rebs, 11 blks - Danielle Campbell - vs. Butler (11/17/07) |
| Before that | 20 pts, 11 rebs, 10 assts - Stephanie White - vs. Indiana (1/22/99) |

INDIVIDUAL FIELD GOALS

| | |
|---------------------------|--|
| Made 13 Field Goals: | 13, Lasha Petree vs. Syracuse (11/30/22) |
| Made 15 Field Goals: | 15, Shereka Wright at Michigan (2/17/02) |
| Attempted 20 Field Goals: | 20 Lasha Petree 26 at Minnesota (2/26/23) |
| Attempted 25 Field Goals: | 25, KK Houser vs. Penn State (1/30/14) |
| Attempted 30 Field Goals: | 33, MaChelle Joseph at Wisconsin (2/21/92) |

INDIVIDUAL 3-POINTERS

| | |
|--|--|
| Made Six 3-Pointers: | 6, Abbey Ellis at Illinois (1/20/22) |
| Made Seven 3-Pointers: | 7, Cassidy Hardin vs. Denver (12/12/21) |
| Made Eight 3-Pointers: | 9, Karissa McLaughlin vs. NU (2/17/19) |
| Attempted 12 3-Pointers: | 12, Cassidy Hardin at Nebraska (1/30/22) |
| Attempted 13 3-Pointers: | 14, Madison Layden vs. Ohio State (12/5/21) |
| Made a 3-Pointer in 20 Straight Games: | 24, Madison Layden (12/9/20-11/17/21) 23, Cassidy Hardin (3/10/21-2/4/22) |

INDIVIDUAL FREE THROWS

| | |
|-------------------|--|
| Made 13 FTs: | 14, Courtney Moses at Northwestern (1/26/12) |
| Made 15 FTs: | 15, Ukari Figgs vs. Washington (3/14/98) |
| Attempted 16 FTs: | 18, Brittany Rayburn vs. Gardner-Webb (12/21/09) |
| Attempted 18 FTs: | 18, Brittany Rayburn vs. Gardner-Webb (12/21/09) |
| Attempted 20 FTs: | 20, Shereka Wright at Northwestern (2/15/04) |

INDIVIDUAL STEALS

| | |
|-----------------------|--|
| Grabbed Five Steals: | 5, Jeanae Terry vs. Wisconsin (3/2/23) |
| Grabbed Six Steals: | 8, Jeanae Terry vs. Penn State (2/22/23) |
| Grabbed Seven Steals: | 8, Jeanae Terry vs. Penn State (2/22/23) |
| Grabbed Eight Steals: | 8, Jeanae Terry vs. Penn State (2/22/23) |

INDIVIDUAL REBOUNDS

| | |
|--|---|
| Grabbed 15 Rebounds: | 17, Jeanae Terry vs. Illinois (2/17/22) |
| Grabbed 16 Rebounds: | 17, Jeanae Terry vs. Illinois (2/17/22) |
| Grabbed 17 Rebounds: | 17, Jeanae Terry vs. Illinois (2/17/22) |
| Grabbed 18 Rebounds: | 18, Fatou Diagne vs. Penn State (1/31/21) |
| Grabbed 19 Rebounds: | 19, Whitney Bays vs. Ohio State (1/25/15) |
| Grabbed 20 Rebounds: | 20, Joy Holmes at Wisconsin (1/27/91) |
| Grabbed Eight Off. Rebounds: | 9, Jeanae Terry at Wisconsin (2/13/22) |
| 10+ Rebounds in Three Straight Games: | 3, Ae'Rianna Harris (11/17/19-11/29/19) |
| Two Players with 10+ Rebounds in a Game: | Tamara Farquhar (14) & Ae'Rianna Harris (17) vs. Western Illinois (11/17/19) |
| Three Players 10+ Rebounds in a Game: | Bridget Perry (11), Whitney Bays (11) & Liza Clemons (13) vs. Northwestern (2/11/15) |

INDIVIDUAL ASSISTS

| | |
|---|--|
| Dished Out 10 Assists: | 10, Jeanae Terry vs. Texas A&M (11/16/23) |
| Dished Out 11 Assists: | 12, Jeanae Terry vs. Indiana State (11/20/22) |
| Dished Out 12 Assists: | 12, Jeanae Terry vs. Indiana State (11/20/22) |
| Dished Out 5+ Assists in Five Straight Games: | 11 Jeanae Terry (11/20/22-12/29/22) |
| Dished Out 10+ Assists in Two Straight Games: | Jeanae Terry vs. Marshall (11/10/22) & Murray State (11/14/22) |

INDIVIDUAL BLOCKED SHOTS

| | |
|---|--|
| Posted Five Blocks: | 7, Ae'Rianna Harris vs. Michigan State (3/5/20) |
| Posted Six Blocks: | 7, Ae'Rianna Harris vs. Michigan State (3/5/20) |
| Posted Seven Blocks: | 7, Ae'Rianna Harris vs. Michigan State (3/5/20) |
| Posted Eight Blocks: | 9, Ae'Rianna Harris at South Carolina (12/15/19) |
| Blocked 5+ Shots in Back-to-Back Games: | Ae'Rianna Harris vs. UT Martin, 5 (12/18/17), Saint Mary's, 5 (12/20/17) & at Rutgers, 7 (12/28/17) |

INDIVIDUAL MINUTES

| | |
|--|--|
| Played a Complete Game: | Madison Layden vs. Michigan State (3/3/22) |
| Played at Least 40 Minutes: | Jeanae Terry vs. Michigan State (12/4/22) |
| Played Every Minute of an Overtime Game: | Dominique Oden (45) |
| Freshman Played 40 Minutes: | Karissa McLaughlin (45) at Rutgers (1/16/19) |
| Freshman Played a Complete Game: | Madison Layden (40) vs. Rutgers (2/14/21) |
| Played Consecutive Complete Games: | Kayana Traylor, 2 vs. Michigan (2/11/21) |

INDIVIDUAL FOULS

| | |
|---------------------------|--|
| Technical Foul - Player: | Ra Shaya Kyle vs. Florida State (11/27/21) |
| Technical Foul - Coach: | Katie Gearlds vs. SIUE (11/17/22) |
| Fouled Out: | Madison Layden vs. Iowa (3/3/23) |
| Two Players Fouled Out: | Ra Shaya Kyle, Fatou Diagne vs. Michigan (2/11/21) |
| Three Players Fouled Out: | Tamara Farquhar, Ae'Rianna Harris & Dominique Oden vs. South Carolina (12/16/18 - 2 OT) |



THE LAST TIME PURDUE

TEAM SCORING (GAME)

| | |
|-----------------------------|---------------------------------------|
| Won by 40+: | 42 (80-38) at Ball State (11/7/18) |
| Won by 40+ (Big Ten): | 43 (88-45) vs. Nebraska (1/26/17) |
| Lost by 20+: | 43 (92-49) at UCLA (11/6/23) |
| Lost by 30+: | 43 (92-49) at UCLA (11/6/23) |
| Scored 90+: | 90 vs. Murray State (11/13/22) |
| Scored 90+ (Big Ten): | 91 at Penn State (12/20/20) |
| Scored 100+: | 100 vs. SIUE (11/17/22) |
| Scored 100+ (Big Ten): | 110 (110-51) at Michigan (3/12/94) |
| Scored 40 or Fewer: | 40 (40-86) vs. Connecticut (11/24/18) |
| Scored 50 or Fewer: | 49 vs. Florida (11/20/23) |
| Scored 50 or Fewer and Won: | 48 (48-46) at IUPUI (3/15/18) |
| Allowed 90+: | 92 at UCLA (11/6/23) |
| Allowed 90+ (Big Ten): | 100 at Ohio State (2/18/21) |
| Allowed 100+: | 100 at Ohio State (2/18/21) |
| Allowed 50 or Fewer: | 50, at Ohio State (12/28/19) |
| Allowed 40 or Fewer: | 38 at Ball State (11/7/18) |

TEAM SCORING (HALF)

| | |
|-------------------------------|---------------------------------------|
| Scored 60 in the First Half: | 68 vs. Kent State (12/8/90) |
| Scored 60 in the Second Half: | 60 vs. South Alabama (12/27/94) |
| Scored 50 Points or More: | 57 vs. Penn State (2/22/23) |
| Scored 15 Points or Less: | 15 (1st) vs. No. 18 Indiana (1/14/21) |
| Scored 20 Points or Less: | 20 (2nd) vs. Indiana (2/5/23) |
| Allowed 50+: | 50 (2nd) at UCLA (11/6/23) |
| Allowed 15 Points or Less: | 15 (1st) at Wisconsin (2/13/22) |
| Allowed 20 Points or Less: | 19 (1st) vs. Southern (11/12/23) |

TEAM SCORING (QUARTER)

| | |
|----------------------------|----------------------------------|
| Scored 30+: | 30 (3rd) vs. Southern (11/12/23) |
| Scored 25+: | 30 (3rd) vs. Southern (11/12/23) |
| Scored 10 Points or Less: | 9 (4th) vs. Florida (11/20/23) |
| Scored 5 Points or Less: | 2 (3rd) vs. Indiana (2/5/23) |
| Allowed 30+: | 32 (4th) vs. Penn State (2/9/22) |
| Allowed 25+: | 27 (4th) at UCLA (11/6/23) |
| Allowed 10 Points or Less: | 7 (2nd) vs. Southern (11/12/23) |
| Allowed 5 Points or Less: | 2 (1st) at Wisconsin (2/13/22) |

TEAM SHOOTING

| | |
|------------------------------|---|
| Shot 65% or Higher: | .735 (36-59) vs. Penn State (1/28/18) |
| Shot 60% or Higher: | .607 (34-56) vs. Harvard (11/24/22) |
| Shot 55% or Higher: | .553 (26-47) vs. Maryland (12/8/22) |
| Shot 50% or Higher: | .516 (33-64) vs. Penn State (2/22/23) |
| Shot 30% or Lower: | .296 (21-71) vs. Ohio State (12/5/21) |
| Shot 25% or Lower: | .241 (13-54) at No. 12 Maryland (1/10/20) |
| Shot 35% or Lower and Won: | .308 (20-65) vs. Wisconsin (1/21/21) |
| Opponent Shot 55% or Higher: | .582 (39-67) at Ohio State (2/18/21) |
| Opponent Shot 50% or Higher: | .547 (35-64) at UCLA (11/6/23) |
| Opponent Shot 30% or Lower: | .281 (16-57) vs. Southern (11/12/23) |
| Opponent Shot 25% or Lower: | .242 (16-66) at Rutgers (2/19/17) |

TEAM 3-POINT SHOOTING

| | |
|-------------------------|---|
| Made 10+: | 10 at Rutgers (2/9/23) |
| Made 12+: | 15 at Illinois (1/20/22) |
| Made 15+: | 15 vs. Central Michigan (12/28/13), at Illinois (1/20/22) |
| Made 0: | 0 vs. Valparaiso (12/6/20) |
| Attempted 25+: | 28 vs. Iowa (3/3/23) |
| Attempted 30+: | 30 at Rutgers (2/9/23) |
| Attempted Five or Less: | 4 at UCLA (11/6/23) |
| Shot 50%+: | .600 (6-10) vs. St. John's (3/16/23) |
| Shot 60%+: | .600 (6-10) vs. St. John's (3/16/23) |

TEAM FREE THROW SHOOTING

| | |
|-------------------------|-------------------------------|
| Made 25+: | 26 vs. Southern (11/12/23) |
| Made 30+: | 32 vs. DePaul (11/21/10) |
| Made Five or Less: | 2 at Rutgers (2/9/23) |
| Made All Attempted: | 7-7 at No. 5 Indiana (2/6/22) |
| Attempted 30+: | 36 vs. SIUE (11/17/22) |
| Attempted 40+: | 41 vs. Minnesota (1/18/04) |
| Attempted 10 or Less: | 3 at Rutgers (2/9/23) |
| Attempted Five or Less: | 3 at Rutgers (2/9/23) |

TEAM REBOUNDS

| | |
|-------------------------|---|
| Had 20+ Rebound Margin: | 20 (50-30) vs. Michigan State (12/4/22) |
| Had 25+ Rebound Margin: | 30 (55-25) vs. USC Upstate (11/17/16) |
| Outrebounded by 20+: | 24 (50-26) vs. No. 8 Maryland (2/25/21) |
| Outrebounded by 25+: | 28 (28-56) at Notre Dame (12/29/13) |

TEAM ASSISTS

| | |
|--------------------|----------------------------------|
| Had 25: | 25 vs. Murray State (11/13/22) |
| Had 30: | 31 vs. Incarnate Word (12/10/15) |
| Had Five or Fewer: | 5 at Indiana (3/6/21) |

TEAM TURNOVERS

| | |
|------------------------|----------------------------|
| Committed 10 or Fewer: | 9 vs. Texas A&M (11/16/23) |
| Committed 20+: | 21 vs. Southern (11/12/23) |
| Forced 10 or Fewer: | 8 at Ohio State (2/18/21) |
| Forced 20+: | 26 vs. Wisconsin (1/1/23) |

TEAM CLOSE GAMES

| | |
|---|---|
| One-Point Games: | L, 76-75 vs. Florida State (11/25/22) |
| Two-Point or less Games: | L, 66-64 vs. St. John's (3/16/23) |
| Three-Point or less Games: | L, 77-74 vs. Maryland (12/8/22) |
| Back-to-Back Games Decided by Three Points or Less: | L, 63-65 (OT) at Rutgers (1/16/19); W 56-53 vs. Indiana (1/20/19) |
| Last Second Shot to Win: | Jeanae Terry, 2 vs. Georgia Tech (12/1/21) |
| | Jeanae Terry, 2 vs. Rutgers (1/3/22) |
| Lost on a Last Second Shot: | Shyanne Sellers, 3-pt vs. Maryland (12/8/22) |

TEAM OVERTIME

| | |
|-----------------------------|--|
| Overtime Game: | W, 76-71 vs. Michigan State (12/4/22) |
| Double Overtime Game: | L, 73-82 vs. South Carolina (12/16/18) |
| Triple Overtime Game: | W, 82-75 vs. Nebraska (2/2/12) |
| Consecutive Overtime Games: | W, 90-88 at Minnesota (1/22/15); L, 71-79 vs. Ohio State (1/25/15) |

TEAM COMEBACKS

| | |
|---------------------------------|---|
| Came Back from 10+ Down to Win: | 18 - W, 57-55 vs. Wisconsin (3/2/23) 3/2/23; down 30-12 w/ 4:27 left in the 2nd |
| Came Back from 15+ Down to Win: | 18 - W, 57-55 vs. Wisconsin (3/2/23) 3/2/23; down 30-12 w/ 4:27 left in the 2nd |

TEAM RANKED OPPONENTS

| | |
|--|-------------------------------|
| Beat a Ranked Team: | #2 Ohio State (1/29/23) |
| Beat Back-to-Back Ranked Team: | #22 Illinois, 62-52 (1/26/23) |
| | #2 Ohio State (1/29/23) |
| Beat a Ranked Team on the Road: | #2 Ohio State (1/29/23) |
| Beat a Top-10 Ranked Team: | at #2 Ohio State (1/29/23) |
| Beat a Top-10 Ranked Team on the Road: | at #2 Ohio State (1/29/23) |
| Beat a Top-5 Ranked Team: | at #2 Ohio State (1/29/23) |
| Beat a Top-5 Ranked Team on the Road: | at #2 Ohio State (1/29/23) |

TRANSFERS' PURDUE BESTS

Jeanae Terry's Purdue Highs

| | |
|-------------|---|
| Points | 17, vs. SIUE, 11/17/22 |
| Rebounds | 17, 2x last vs. Illinois, 2/17/22 |
| Assists | 12, 2x last vs. Indiana State, 11/22/22 |
| Steals | 8, vs. Penn State, 2/22/23 |
| Blocks | 2, 2x last at Michigan State, 12/5/22 |
| Field Goals | 7, at Indiana, 2/6/22 |
| 3-Pointers | 2, vs. Michigan State, 3/3/22 |
| Free Throws | 9, vs. Miami (OH), 12/19/21 |
| Minutes | 41, at Michigan State, 12/5/22 |

Mila Reynolds' Purdue Highs

| | |
|-------------|---------------------|
| Points | |
| Rebounds | |
| Assists | 1, at UCLA, 11/6/23 |
| Steals | |
| Blocks | |
| Field Goals | |
| 3-Pointers | |
| Free Throws | |
| Minutes | 5, at UCLA, 11/6/23 |

Abbey Ellis' Purdue Highs

| | |
|-------------|------------------------------------|
| Points | 29, vs. SIUE, 11/17/22 |
| Rebounds | 9, vs. Southern Illinois, 3/16/22 |
| Assists | 11, vs. Western Michigan, 11/14/21 |
| Steals | 5, vs. Western Michigan, 11/14/21 |
| Blocks | 1, 5x last vs. Nebraska, 1/18/23 |
| Field Goals | 9, 3x last vs. Texas A&M, 11/16/23 |
| 3-Pointers | 6, at Illinois, 1/20/22 |
| Free Throws | 9, vs. Southern Illinois, 3/16/22 |
| Minutes | 44, vs. Indiana, 1/16/22 |

Alaina Harper's Purdue Highs

| | |
|-------------|----------------------------------|
| Points | |
| Rebounds | 1, 2x last vs. Georgia, 11/22/23 |
| Assists | |
| Steals | |
| Blocks | |
| Field Goals | |
| 3-Pointers | |
| Free Throws | |
| Minutes | 10, vs. Georgia, 11/22/23 |

Caitlyn Harper's Purdue Highs

| | |
|-------------|------------------------------------|
| Points | 20, at Penn State, 1/7/23 |
| Rebounds | 11, vs. Texas A&M, 11/16/23 |
| Assists | 3, 3x last vs. Southern, 11/12/23 |
| Steals | 2, 6x last vs. Georgia, 11/22/23 |
| Blocks | 4, vs. Michigan, 1/10/23 |
| Field Goals | 9, at Penn State, 1/7/23 |
| 3-Pointers | 2, 6x last vs. Texas A&M, 11/16/23 |
| Free Throws | 8, vs. Nebraska, 1/18/23 |
| Minutes | 37, vs. Texas A&M, 11/16/23 |

AMIYAH REYNOLDS 1



Height - 6-0 | **Position** - Guard | **Year** - Sophomore | **Major** - Business | **Hometown** - Indianapolis, Ind. | **High School** - Lawrence North
Instagram - s.jaylasmith | **Twitter** - _JaylaSmith | **TikTok** - s.jaylasmith

REYNOLDS QUICK HITS

- No. 43 player in the nation by ESPN HoopGurlz, second highest signee in the Big Ten for the 2023 class
- Finished third as a finalist for the 2023 Indiana Miss Basketball
- Joined 2010 South Bend Washington graduate Skylar Diggins-Smith as the only Panthers to total over 1,000 points and 500 assists in a career
- Named an Indiana All-Star and All-State Supreme 15 as a junior and senior
- Went 95-18 over four years with the Panthers, with a 68-17 record when playing with her sister Mila
- Won 2022 IHSAA 3A State Championship, helping set the championship game record for 3A as the Panthers scored 93 points
- Ended career ranked second in assists at Washington with 564 • Scored 1,000th career point off an assist from Rashunda Jones

RASHUNDA JONES

2



Height - 5-8 | **Position** - Guard | **Year** - Freshman | **Major** - Sports Marketing
Hometown - South Bend, Ind. | **High School** - South Bend Washington
Instagram - rashunda_jones | **TikTok** - itzshunda

| | Season High | Career High |
|-------------|-------------------------------------|-------------------------------------|
| Points | 20, vs. Texas A&M, 11/16/23 | 20, vs. Texas A&M, 11/16/23 |
| Rebounds | 5, 2x last vs. Georgia, 11/22/23 | 5, 2x last vs. Georgia, 11/22/23 |
| Assists | 1, vs. Southern, 11/12/23 | 1, vs. Southern, 11/12/23 |
| Steals | 1, 2x last vs. Georgia, 11/22/23 | 1, 2x last vs. Georgia, 11/22/23 |
| Blocks | 1, 2x last, vs. Texas A&M, 11/16/23 | 1, 2x last, vs. Texas A&M, 11/16/23 |
| Field Goals | 8, vs. Texas A&M, 11/16/23 | 8, vs. Texas A&M, 11/16/23 |
| 3-Pointers | 1, vs. Southern, 11/12/23 | 1, vs. Southern, 11/12/23 |
| Free Throws | 4, vs. Texas A&M, 11/16/23 | 4, vs. Texas A&M, 11/16/23 |
| Minutes | 23, vs. Texas A&M, 11/16/23 | 23, vs. Texas A&M, 11/16/23 |

| SEASON | GP-GS | MIN/AVG | FG-FGA | FG% | 3FG-FGA | 3FG% | FT-FTA | FT% | OFF | DEF | TOT | AVG | PF-FO | AST | TO | BLK | STL | PTS | AVG |
|---------|-------|---------|--------|------|---------|------|--------|------|-----|-----|-----|-----|-------|-----|----|-----|-----|-----|-----|
| 2023-24 | 5-0 | 96/19.2 | 16-40 | .400 | 1-6 | .167 | 9-12 | .750 | 2 | 13 | 15 | 3.0 | 16-1 | 2 | 12 | 2 | 2 | 42 | 8.4 |

JAYLA SMITH

3



Height - 6-0 | **Position** - Guard | **Year** - Junior | **Major** - Business
Hometown - Indianapolis, Ind. | **High School** - Lawrence North
Instagram - s.jaylasmith | **Twitter** - _JaylaSmith | **TikTok** - s.jaylasmith

| | Season High | Career High |
|-------------|----------------------------------|----------------------------------|
| Points | 13, vs. Florida, 11/20/23 | 16, 3x last vs. Iowa, 3/3/23 |
| Rebounds | 5, vs. Florida, 11/20/23 | 7, 3x last vs. Nebraska, 1/18/23 |
| Assists | 1, 2x last vs. Florida, 11/20/23 | 4, 2x last vs. Nebraska, 1/18/23 |
| Steals | | 4, 2x last, vs. SIUE, 11/17/22 |
| Blocks | 1, vs. Texas A&M, 11/16/23 | 3, 2x last vs. Indiana, 2/5/23 |
| Field Goals | 6, vs. Florida, 11/20/23 | 7 vs. Iowa, 3/3/23 |
| 3-Pointers | 1, vs. Florida, 11/20/23 | 4, at Nebraska, 1/30/22 |
| Free Throws | | 3, 2x last, vs. SIUE, 11/17/22 |
| Minutes | 23, vs. Florida, 11/20/23 | 30 at Penn State, 1/7/23 |

| SEASON | GP-GS | MIN/AVG | FG-FGA | FG% | 3FG-FGA | 3FG% | FT-FTA | FT% | OFF | DEF | TOT | AVG | PF-FO | AST | TO | BLK | STL | PTS | AVG |
|---------|-------|-----------|---------|------|---------|------|--------|------|-----|-----|-----|-----|-------|-----|----|-----|-----|-----|-----|
| 2021-22 | 30-1 | 473/15.8 | 54-140 | .386 | 16-55 | .291 | 16-26 | .615 | 13 | 39 | 52 | 1.7 | 25-0 | 21 | 29 | 11 | 22 | 140 | 4.7 |
| 2022-23 | 30-3 | 569/19.0 | 95-209 | .455 | 18-64 | .281 | 26-46 | .565 | 24 | 40 | 64 | 2.1 | 32-0 | 37 | 38 | 17 | 30 | 234 | 7.8 |
| 2023-24 | 4-1 | 77/19.3 | 8-25 | .320 | 1-11 | .091 | 0-0 | .000 | 1 | 10 | 11 | 2.8 | 2-0 | 2 | 6 | 1 | 0 | 17 | 4.3 |
| TOTAL | 64-5 | 1120/17.5 | 157-374 | .420 | 35-130 | .269 | 42-72 | .583 | 38 | 89 | 127 | 2.0 | 59-0 | 60 | 73 | 29 | 52 | 391 | 6.1 |

JEANAE TERRY

10



Height - 5-11 | **Position** - Guard | **Year** - Fifth Year | **Major** - Sociology
Hometown - Detroit, Mich. | **High School** - Wayne Memorial | **Previous** - Illinois
Instagram - saucy__nae | **Twitter** - basquetbol_nae | **TikTok** - saucytiktok10

| | Season High | Career High | (*prior school) |
|-------------|----------------------------------|--|-----------------|
| Points | 8, vs. Texas A&M, 11/16/23 | 28, at Wisconsin, 1/31/21* | |
| Rebounds | 11, vs. Southern, 11/12/23 | 17, 2x last vs. Illinois, 2/17/22 | |
| Assists | 10, vs. Texas A&M, 11/16/23 | 12, 3x last, vs. Indiana St., 11/20/22 | |
| Steals | 3, vs. Texas A&M, 11/16/23 | 8 vs. Penn State, 2/22/23 | |
| Blocks | | 4, vs. Chicago State, 11/5/19* | |
| Field Goals | 2, 2x last vs. Georgia, 11/22/23 | 9, vs. Penn State, 1/28/21* | |
| 3-Pointers | | 3, 3x last vs. Ohio State, 1/7/21* | |
| Free Throws | 4, vs. Texas A&M, 11/16/23 | 11, at Wisconsin, 1/31/21* | |
| Minutes | 38, vs. Texas A&M, 11/16/23 | 41, at Michigan State, 12/4/22 | |

| SEASON | GP-GS | MIN/AVG | FG-FGA | FG% | 3FG-FGA | 3FG% | FT-FTA | FT% | OFF | DEF | TOT | AVG | PF-FO | AST | TO | BLK | STL | PTS | AVG |
|---------|---------|-----------|---------|------|---------|------|---------|------|-----|-----|-----|-----|-------|-----|-----|-----|-----|-----|------|
| 2019-20 | 30-11 | 693/23.1 | 65-225 | .289 | 15-57 | .263 | 40-66 | .606 | 34 | 79 | 113 | 3.8 | 55-1 | 91 | 50 | 17 | 35 | 185 | 6.2 |
| 2020-21 | 23-23 | 690/30.0 | 89-226 | .394 | 15-58 | .259 | 54-74 | .730 | 48 | 131 | 179 | 7.8 | 48-1 | 101 | 96 | 6 | 41 | 247 | 10.7 |
| 2021-22 | 32-32 | 949/29.6 | 88-215 | .409 | 3-21 | .143 | 51-74 | .689 | 66 | 157 | 223 | 7.0 | 80-2 | 183 | 100 | 14 | 41 | 230 | 7.2 |
| 2022-23 | 30-30 | 898/29.9 | 74-185 | .400 | 1-10 | .100 | 45-71 | .634 | 60 | 167 | 227 | 7.6 | 62-0 | 190 | 93 | 12 | 70 | 194 | 6.5 |
| 2023-24 | 5-5 | 153/30.6 | 6-23 | .261 | 0-0 | .000 | 10-13 | .769 | 5 | 23 | 28 | 5.6 | 6-0 | 27 | 11 | 0 | 5 | 22 | 4.4 |
| PURDUE | 67-67 | 2000/29.8 | 168-423 | .397 | 4-31 | .129 | 106-158 | .671 | 131 | 347 | 478 | 7.1 | 148-2 | 400 | 204 | 26 | 116 | 446 | 6.7 |
| TOTAL | 120-101 | 3383/28.2 | 322-874 | .368 | 34-146 | .233 | 200-298 | .671 | 213 | 557 | 770 | 6.4 | 251-4 | 592 | 350 | 49 | 192 | 878 | 7.3 |

MCKENNA LAYDEN

11



Height - 6-2 | **Position** - Guard | **Year** - Freshman | **Major** - Pre-dental
Hometown - Kokomo, Ind. | **High School** - Northwestern
Instagram - mckenna.layden | **Twitter** - _mckennalayden | **TikTok** - mckenna.layden

| | Season High | Career High |
|-------------|----------------------------------|------------------------------------|
| Points | 4, at UCLA, 11/6/23 | 4, at UCLA, 11/6/23 |
| Rebounds | 4, vs. Southern, 11/12/23 | 4, vs. Southern, 11/12/23 |
| Assists | 2, vs. Southern, 11/12/23 | 2, vs. Southern, 11/12/23 |
| Steals | 1, 3x last vs. Georgia, 11/22/23 | 1, 2x last, vs. Southern, 11/12/23 |
| Blocks | | |
| Field Goals | 1, at UCLA, 11/6/23 | 1, at UCLA, 11/6/23 |
| 3-Pointers | 1, at UCLA, 11/6/23 | 1, at UCLA, 11/6/23 |
| Free Throws | 1, at UCLA, 11/6/23 | 1, at UCLA, 11/6/23 |
| Minutes | 18, vs. Southern, 11/12/23 | 18, vs. Southern, 11/12/23 |

| SEASON | GP-GS | MIN/AVG | FG-FGA | FG% | 3FG-FGA | 3FG% | FT-FTA | FT% | OFF | DEF | TOT | AVG | PF-FO | AST | TO | BLK | STL | PTS | AVG |
|---------|-------|---------|--------|------|---------|------|--------|------|-----|-----|-----|-----|-------|-----|----|-----|-----|-----|-----|
| 2023-24 | 5-0 | 57/11.3 | 1-9 | .111 | 1-7 | .143 | 1-2 | .500 | 1 | 6 | 7 | 1.4 | 0-0 | 2 | 1 | 0 | 3 | 4 | 0.8 |

JONES QUICK HITS

- 2023 Indiana Miss Basketball runner-up
- No. 79 player in the nation by ESPN HoopGurlz
- 2022 IHSAA Class 3A State Champion
- Indiana All-Star & IBCA Supreme 15 as a junior and senior
- Won 2022 IHSAA 3A State Championship
- Finished career with 1,791 points, 497 rebounds, 427 assists and 419 steals
- Recorded a career-high 19.8 points, 4.5 assists and 3.7 steals per game as a senior
- Assisted on Amiyah Reynolds' 1,000th career point

SMITH QUICK HITS

- Sank game-winning 3-pointer vs. Wisconsin in Big Ten Tournament, helping send Purdue to the NCAA Tournament
- Primary substitute as a freshman with one start
- 2021 Indiana Miss Basketball, 10th in program history
- Won the 2020 Indiana 3A State Championship, over Madison Layden's Northwestern, hitting 8 3-pointers
- No. 49 player in the nation and No. 1 in Indiana by MaxPreps
- 3-time First Team All-State selection
- Set season-long career highs in nearly every statistical category in 2022-23
- Ranked No. 49 player in the nation and the No. 1 player in the state of Indiana by MaxPreps

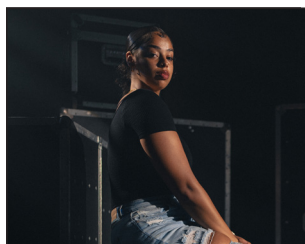
TERRY QUICK HITS

- Recorded 400th assist at Purdue vs. Georgia, passing Katie Gearlds for 13th in program history
- Using her year granted by the NCAA for the 2020-21 season
- 2nd Team All-Big Ten, All-Defensive Team honoree last year
- Joined Caitlin Clark hit 150 ast, 200 reb the last two seasons
- Joined 500-assist club with a pair of dimes vs. Nebraska
- Has only three non-point double-doubles in Purdue history
- Only Boilermaker (men or women) in history to record multiple triple-doubles in a season and a career
- Joined Stephanie White as the only Boilermaker to ever record over 150 assists and 200 rebounds in a season
- Two-time Class A All-State honoree

LAYDEN QUICK HITS

- Playing alongside Madison for the first time since her freshman year, when they reached the IHSAA State Championship Game
- Tabbed Elite 150 by Prospects Nation
- Indiana All-Star & IBCA Supreme 15 as a junior and senior
- Two-time sectional champion, won regional and semi-state once, appeared in one state final
- Named an Indiana Junior Core Six All-Star as a junior
- Posted a 78-17 record in high school
- Won two sectional titles in volleyball and two in tennis
- Her mother Kathie was her head coach in high school, won five state titles during coaching career - most by non-private coach

MILA REYNOLDS 15



Height - 6-3 | **Position** - Forward | **Year** - Sophomore | **Major** - African American Studies
Hometown - South Bend, Ind. | **High School** - South Bend Washington | **Previous** - Maryland
Instagram - milareynolds15 | **Twitter** - 15milareynolds | **TikTok** - milamarie_15

| Season High | Career High |
|-------------|-------------------------------------|
| Points | 5, 2x last vs. Penn State, 1/30/23* |
| Rebounds | 3, 2x last vs. Pitt, 11/27/22* |
| Assists | 1, at UCLA, 11/6/23 |
| Steals | 2, at Northwestern, 29/23* |
| Blocks | 1, 2x last vs. Pitt, 11/27/22* |
| Field Goals | 1, vs. Pitt, 11/27/22* |
| 3-Pointers | 2, 2x last vs. Penn State, 1/30/23* |
| Free Throws | 2, at Wisconsin, 1/19/23* |
| Minutes | 12, vs. Pitt, 11/27/22* |

| SEASON | GP-GS | MIN/AVG | FG-FGA | FG% | 3FG-FGA | 3FG% | FT-FTA | FT% | OFF | DEF | TOT | AVG | PF-FO | AST | TO | BLK | STL | PTS | AVG |
|---------|-------|---------|--------|------|---------|------|--------|------|-----|-----|-----|-----|-------|-----|----|-----|-----|-----|-----|
| 2022-23 | 22-0 | 111/5.1 | 9-29 | .310 | 0-2 | .000 | 5-6 | .833 | 7 | 12 | 19 | 0.9 | 13-0 | 4 | 6 | 1 | 2 | 23 | 1.0 |
| 2023-24 | 2-0 | 9/4.4 | 0-2 | .000 | 0-1 | .000 | 0-0 | .000 | 0 | 0 | 0 | 0.0 | 2-0 | 1 | 1 | 0 | 0 | 0 | 0.0 |
| TOTAL | 24-0 | 120/5.0 | 9-31 | .290 | 0-3 | .000 | 5-6 | .833 | 7 | 12 | 19 | 0.8 | 15-0 | 5 | 7 | 1 | 2 | 23 | 1.0 |

REYNOLDS QUICK HITS

- Transferred to Purdue in May of 2023
- Saw action in 22 games with the Terrapins
- No. 60 player, No. 16 forward, four-star, 94 rating by ESPN HoopGurlz- Finished third in voting for the 2022 Indiana Miss Basketball
- Tabbed Indiana All-Star & IBCA Academic All-State as a senior
- Played alongside Amiyah Reynolds and Rashunda Jones for three seasons, going 78-30 over four years and 68-17 with Amiyah
- Totaled 2,099 career points, second in Panther history behind 2010 graduate Skylar Diggins-Smith

MARY ASHLEY STEVENSON 20



Height - 6-2 | **Position** - Forward | **Year** - Freshman | **Major** - Communications
Hometown - New York City, N.Y. | **High School** - The Dalton School
Instagram - maryashleystevenson | **Twitter** - _MA_Stevenson20

| Season High | Career High |
|-------------|----------------------------------|
| Points | 13, vs. Southern, 11/12/23 |
| Rebounds | 13, vs. Southern, 11/12/23 |
| Assists | 6, vs. Florida, 11/20/23 |
| Steals | 2, 2x last vs. Georgia, 11/22/23 |
| Blocks | 2, 2x last vs. Georgia, 11/22/23 |
| Field Goals | 1, 2x last vs. Georgia, 11/22/23 |
| 3-Pointers | 1, 3x last vs. Florida, 11/20/23 |
| Free Throws | 1, 3x last vs. Florida, 11/20/23 |
| Minutes | 5, vs. Southern, 11/12/23 |
| | 5, vs. Southern, 11/12/23 |
| | 3, 2x last vs. Georgia, 11/22/23 |
| | 3, 2x last vs. Georgia, 11/22/23 |
| | 32, vs. Georgia, 11/22/23 |
| | 32, vs. Georgia, 11/22/23 |

| SEASON | GP-GS | MIN/AVG | FG-FGA | FG% | 3FG-FGA | 3FG% | FT-FTA | FT% | OFF | DEF | TOT | AVG | PF-FO | AST | TO | BLK | STL | PTS | AVG |
|---------|-------|----------|--------|------|---------|------|--------|------|-----|-----|-----|-----|-------|-----|----|-----|-----|-----|-----|
| 2023-24 | 5-4 | 120/23.9 | 15-36 | .417 | 0-5 | .000 | 10-12 | .833 | 11 | 8 | 19 | 3.8 | 12-0 | 4 | 10 | 3 | 2 | 40 | 8.0 |

STEVENSON QUICK HITS

- First Purdue freshman to score at least five pts and have an rebounds, assist, steal and block in a season opener since 2009 (8 pts, 2 rebs, 1 asts, 1 stls, 1 blks)
- Runner-up N.Y. Miss Basketball and Gatorade Player of the Year
- No. 97 player in the nation, four-star prospect with a 91 grade from ESPN HoopGurlz
- ew- Played in the WHO'S NXT? All-American Games
- 3x state champion, two in New York and one in South Carolina
- Back-to-back New York State Sportswriters Association State Player of the Year (Class B&C) in 2021-22 and 2022-23
- Played high school ball under assistant coach Doug Feinberg

EMILY MONSON 21



Height - 6-1 | **Position** - Guard | **Year** - Freshman | **Major** - Psychology
Hometown - Murfreesboro, Tenn. | **High School** - Blackman
Instagram - emilymonson_ | **Twitter** - _emily_monson21 | **TikTok** - emilyymonson

| Season High | Career High |
|-------------|---------------------------|
| Points | 4, at UCLA, 11/6/23 |
| Rebounds | 4, at UCLA, 11/6/23 |
| Assists | 1, vs. Southern, 11/12/23 |
| Steals | 1, vs. Southern, 11/12/23 |
| Blocks | 1, at UCLA, 11/6/23 |
| Field Goals | 1, at UCLA, 11/6/23 |
| 3-Pointers | 1, at UCLA, 11/6/23 |
| Free Throws | 1, at UCLA, 11/6/23 |
| Minutes | 1, at UCLA, 11/6/23 |
| | 4, at UCLA, 11/6/23 |
| | 4, at UCLA, 11/6/23 |

| SEASON | GP-GS | MIN/AVG | FG-FGA | FG% | 3FG-FGA | 3FG% | FT-FTA | FT% | OFF | DEF | TOT | AVG | PF-FO | AST | TO | BLK | STL | PTS | AVG |
|---------|-------|---------|--------|------|---------|------|--------|------|-----|-----|-----|-----|-------|-----|----|-----|-----|-----|-----|
| 2023-24 | 3-0 | 8/2.8 | 1-2 | .500 | 1-2 | .500 | 1-2 | .500 | 1 | 0 | 1 | 0.3 | 0-0 | 0 | 3 | 0 | 1 | 4 | 1.3 |

MONSON QUICK HITS

- Naismith High School All-America honorable mention
- No. 15 player in the state by Prep Girls Hoops
- Guided the Blaze to a 2021 Tennessee 3A State Championship
- Won four regional championships and three district titles
- Went 107-16 over high school career, including 81-8 as a starter for three seasons
- Scored 1,066 points with 337 rebounds and 117 steals in career
- Connected on 104 3-pointers at a 41% rate in final campaign
- Scored more points as a senior than her first three seasons combined
- Guided Blackman to the Elite Eight of the TSSAA 4A State Tournament

ABBEY ELLIS 23



Height - 5-6 | **Position** - Guard | **Year** - Fifth Year | **Major** - Early Childhood Education
Hometown - Melbourne, Australia | **High School** - Our Lady of Mercy | **Previous** - Cal Poly
Instagram - _abbeyellis | **Twitter** - _abbeyellis | **TikTok** - abbeye_22

| Season High | Career High | (*prior school) |
|-------------|----------------------------------|------------------------------------|
| Points | 20, vs. Texas A&M, 11/16/23 | 39, at San Diego St., 12/21/20* |
| Rebounds | 6, vs. Georgia, 11/22/23 | 10, vs. Long Beach St., 3/10/21* |
| Assists | 4, vs. Southern, 11/12/23 | 11, vs. Western Michigan, 11/14/21 |
| Steals | 3, vs. Southern, 11/12/23 | 8, vs. Santa Clara, 12/15/20* |
| Blocks | | 1, 16x last vs. Nebraska, 1/18/23 |
| Field Goals | 9, vs. Texas A&M, 11/16/23 | 14, vs. UC Riverside, 1/23/20* |
| 3-Pointers | 2, vs. Texas A&M, 11/16/23 | 8, at UC San Diego, 1/1/21* |
| Free Throws | 7, 2x last vs. Florida, 11/20/23 | 10, at UC San Diego, 1/2/21* |
| Minutes | 36, vs. Florida, 11/20/23 | 44 vs. Indiana, 1/16/22 |

| SEASON | GP-GS | MIN/AVG | FG-FGA | FG% | 3FG-FGA | 3FG% | FT-FTA | FT% | OFF | DEF | TOT | AVG | PF-FO | AST | TO | BLK | STL | PTS | AVG |
|---------|---------|-----------|----------|------|---------|------|---------|------|-----|-----|-----|-----|-------|-----|-----|-----|-----|------|------|
| 2019-20 | 29-29 | 950/32.8 | 165-392 | .421 | 48-148 | .324 | 73-87 | .839 | 10 | 124 | 134 | 4.6 | 75-2 | 84 | 94 | 3 | 42 | 451 | 15.6 |
| 2020-21 | 24-23 | 753/31.4 | 127-322 | .394 | 42-116 | .362 | 71-80 | .888 | 17 | 95 | 112 | 4.7 | 51-2 | 62 | 70 | 3 | 62 | 367 | 15.3 |
| 2021-22 | 32-31 | 928/29.0 | 128-275 | .465 | 31-93 | .333 | 82-96 | .854 | 27 | 74 | 101 | 3.2 | 52-0 | 95 | 71 | 7 | 35 | 369 | 11.5 |
| 2022-23 | 29-18 | 801/27.6 | 106-223 | .475 | 35-94 | .372 | 77-84 | .917 | 15 | 69 | 84 | 2.9 | 50-0 | 43 | 49 | 3 | 21 | 324 | 11.2 |
| 2023-24 | 5-5 | 149/29.7 | 23-62 | .371 | 5-26 | .192 | 18-20 | .900 | 3 | 14 | 17 | 3.4 | 10-0 | 8 | 16 | 0 | 8 | 69 | 13.8 |
| PURDUE | 66-54 | 1878/28.5 | 257-560 | .459 | 71-213 | .333 | 177-200 | .885 | 45 | 157 | 202 | 3.1 | 112-0 | 146 | 136 | 10 | 64 | 762 | 11.5 |
| TOTAL | 119-106 | 3581/30.1 | 549-1274 | .431 | 161-477 | .338 | 321-367 | .875 | 72 | 376 | 448 | 3.8 | 238-4 | 292 | 300 | 16 | 168 | 1580 | 13.3 |

ELLIS QUICK HITS

- Saw career-best streak of 27 made free throws come to an end against Southern
- Elected to use fifth year of eligibility for the 2023-24 season
- Two-time All-Big Ten honorable mention
- Shot a career-best 91.7% at the line to finish third in the nation and first in the Big Ten last year, good for third in Purdue history
- Crossed the career 1,000-point plateau in 2021-22
- Mother Libbie sends several ribbons in different colors for her to wear in games
- Father Martin was an Australian Rules Football official who refereed 244 matches in 13 years, including the 2001 Grand Final.
- First Australian in Purdue history

SOPHIE SWANSON 31



Height - 5-10 | **Position** - Guard | **Year** - Freshman | **Major** - Elementary Education
Hometown - Barrington, Ill. | **High School** - Barrington Prep
Instagram - sophieswanson | **Twitter** - sophieswanson31 | **TikTok** - sophieswanson

| | Season High | Career High |
|-------------|-------------|-------------|
| Points | | |
| Rebounds | | |
| Assists | | |
| Steals | | |
| Blocks | | |
| Field Goals | | |
| 3-Pointers | | |
| Free Throws | | |
| Minutes | | |

SWANSON QUICK HITS

- Coming off knee injury that ended senior campaign
- 2022 Illinois Miss Basketball and Illinois 4A Player of the Year
- Invited to the U18 USA Team Trials
- Four-time all-state, all-conference and all-area honoree
- Honored as the Barrington Female Athlete of the Year in 2021-22
- Won conference, regional, sectional, super-sectional titles as a junior, reaching the state finals
- Invited to U18 Team USA camp as a junior
- Set the school record for points in a season (750), 3-pointers (86), thrice set the school mark for points in a game (40, 37, 36)
- Averaged 23.1 points per game with 3.8 rebounds, 3.0 assists and 3.0 steals as a senior before her injury

| SEASON | GP-GS | MIN/AVG | FG-FGA | FG% | 3FG-FGA | 3FG% | FT-FTA | FT% | OFF | DEF | TOT | AVG | PF-FO | AST | TO | BLK | STL | PTS | AVG |
|---------|-------|---------|--------|-----|---------|------|--------|-----|-----|-----|-----|-----|-------|-----|----|-----|-----|-----|-----|
| 2023-24 | | | | | | | | | | | | | | | | | | | |

ALAINA HARPER 32



Height - 6-3 | **Position** - Guard | **Year** - Sophomore | **Major** - Biomedical Health
Hometown - Hartland, Wis. | **High School** - Arrowhead | **Previous** - Grand Canyon
Instagram - alaina_harper32 | **Twitter** - alainaharper32

| | Season High | Career High |
|-------------|----------------------------------|--------------------------------------|
| Points | | 18, vs. Lindenwood, 11/26/22* |
| Rebounds | 1, 2x last vs. Georgia, 11/22/23 | 8, vs. Columbia, 12/11/22* |
| Assists | | 1, 5x last at Southern Utah, 3/2/23* |
| Steals | | 2, vs. Seattle, 2/18/23* |
| Blocks | | 1, 3x last vs. Seattle, 2/18/23 |
| Field Goals | | 8, vs. Linednwood, 11/26/22* |
| 3-Pointers | | 1, 3x last at Southern Utah, 3/2/23* |
| Free Throws | | 5, at Southern Utah, 3/2/23* |
| Minutes | 11, vs. Georgia, 11/22/23 | 35, vs. Southern Utah, 3/10/23* |

HARPER QUICK HITS

- Teammates with her sister Caitlyn for the first time
- Transferred to Purdue in May of 2023
- Appeared in 29 games with a pair of starts at Grand Canyon
- Was named WAC Freshman of the Week early in the season
- No. 6 player in Wisconsin by Prep Girls Hoops
- Garnered back-to-back WBCA Division I First Team All-State honors as a junior and senior
- Tabbed the 2022 Wisconsin Sports Network's top post player
- 2021 USA Today High School Sports Awards (Milwaukee) nominee

| SEASON | GP-GS | MIN/AVG | FG-FGA | FG% | 3FG-FGA | 3FG% | FT-FTA | FT% | OFF | DEF | TOT | AVG | PF-FO | AST | TO | BLK | STL | PTS | AVG |
|---------|-------|----------|--------|------|---------|------|--------|------|-----|-----|-----|-----|-------|-----|----|-----|-----|-----|-----|
| 2022-23 | 29-2 | 334/11.5 | 58-102 | .569 | 3-5 | .600 | 26-40 | .650 | 35 | 29 | 64 | 2.2 | 35-0 | 5 | 21 | 3 | 3 | 145 | 5.0 |
| 2023-24 | 5-0 | 21/4.2 | 0-0 | .000 | 0-0 | .000 | 0-0 | .000 | 0 | 2 | 2 | 0.4 | 2-0 | 0 | 2 | 0 | 0 | 0 | 0.0 |
| TOTAL | 34-2 | 355/10.4 | 58-102 | .569 | 3-5 | .600 | 26-40 | .650 | 35 | 31 | 66 | 1.9 | 37-0 | 5 | 23 | 3 | 3 | 145 | 4.3 |

MADISON LAYDEN 33



Height - 6-1 | **Position** - Guard | **Year** - Senior | **Major** - Selling & Sales Management
Hometown - Kokomo, Ind. | **High School** - Northwestern
Instagram - madison_layden | **Twitter** - madison_layden | **TikTok** - madison_layden

| | Season High | Career High |
|-------------|----------------------------------|--|
| Points | 21, vs. Southern, 11/12/23 | 21, vs. Southern, 11/12/23 |
| Rebounds | 5, vs. Texas A&M, 11/16/23 | 8 4x last , at Michigan State, 12/4/22 |
| Assists | 2, vs. Southern, 11/12/23 | 7, vs. Michigan State - 1/3/21 |
| Steals | 3, vs. Southern, 11/12/23 | 6, at Rutgers, 2/20/22 |
| Blocks | 1, vs. Texas A&M, 11/16/23 | 2 6x last vs. Northwestern, 2/12/23 |
| Field Goals | 5, 2x last vs. Georgia, 11/22/23 | 8, 2x last vs. Penn State, 2/9/22 |
| 3-Pointers | 4, 2x last vs. Georgia, 11/22/23 | 6, at Iowa - 1/18/21 |
| Free Throws | 7, vs. Southern, 11/12/23 | 6, vs. Dayton, 11/20/21 |
| Minutes | 36, vs. Southern, 11/12/23 | 44 vs. Indiana, 1/16/22 |

LAYDEN QUICK HITS

- Will play alongside her sister freshman McKenna Layden
- Dropped a career-best 21 points against Southern
- 14th on Purdue's career 3-point list
- Big Ten All-Freshman (2021), honorable mention (2022)
- One of 12 players to have 30 3-pointers, 30 steals and 65 assists each of the last three seasons
- Invited to the USA Basketball U19 World Cup Trials
- Named to the All-Freshman Team in 2020-21
- Tied freshman record with 7 3pts in a game at Iowa
- First in IHSA history to lead three Final Fours in scoring
- Ranked 13th in IHSA in career scoring and one of 46 2,000-point scorers in state history

| SEASON | GP-GS | MIN/AVG | FG-FGA | FG% | 3FG-FGA | 3FG% | FT-FTA | FT% | OFF | DEF | TOT | AVG | PF-FO | AST | TO | BLK | STL | PTS | AVG |
|---------|-------|-----------|---------|------|---------|------|--------|------|-----|-----|-----|-----|-------|-----|-----|-----|-----|-----|------|
| 2020-21 | 23-21 | 729/31.7 | 70-163 | .429 | 45-111 | .405 | 15-20 | .750 | 12 | 61 | 73 | 3.2 | 43-0 | 69 | 44 | 5 | 48 | 200 | 8.7 |
| 2021-22 | 29-28 | 986/34.0 | 117-337 | .347 | 63-190 | .332 | 40-47 | .851 | 24 | 110 | 134 | 4.6 | 71-1 | 80 | 55 | 15 | 49 | 337 | 11.6 |
| 2022-23 | 28-13 | 816/29.2 | 56-165 | .339 | 34-124 | .274 | 34-38 | .895 | 2 | 115 | 117 | 4.2 | 72-1 | 83 | 53 | 10 | 30 | 180 | 6.4 |
| 2023-24 | 5-5 | 145/29.0 | 12-34 | .353 | 9-23 | .391 | 10-12 | .833 | 2 | 12 | 14 | 2.8 | 12-0 | 4 | 8 | 1 | 6 | 43 | 8.6 |
| TOTAL | 85-67 | 2677/31.5 | 255-699 | .365 | 151-448 | .337 | 99-117 | .846 | 40 | 298 | 338 | 4.0 | 198-2 | 236 | 160 | 31 | 133 | 760 | 8.9 |

CAITLYN HARPER 34



Height - 6-3 | **Position** - Forward | **Year** - Sixth Year | **Major** - Master's Management
Hometown - Hartland, Wisc. | **High School** - Arrowhead | **Previous** - Cal Baptist
Instagram - caitlynharper32 | **Twitter** - C_harp32 | **TikTok** - caitlynharper32

| | Season High | Career High | (*prior school) |
|-------------|-------------------------------------|-------------------------------------|-----------------|
| Points | 14, vs. Texas A&M, 11/16/23 | 30, at Utah Valley, 1/15/22* | |
| Rebounds | 11, vs. Texas A&M, 11/16/23 | 14, 3x last, vs. Chicago State* | |
| Assists | 3, vs. Southern, 11/12/23 | 5, at UTRGV, 2/13/21* | |
| Steals | 2, vs. Georgia, 11/22/23 | 5, at Sam Houston State, 1/27/22* | |
| Blocks | 1, 2x last vs. Georgia, 11/22/23 | 8, at Chicago State, 3/2/22* | |
| Field Goals | 6, vs. Florida, 11/20/23 | 12, vs. Utah Valley, 2/26/22 | |
| 3-Pointers | 2, 2x last, vs. Texas A&M, 11/16/23 | 4, vs. Rice, 3/22/21* | |
| Free Throws | 2, 3x last vs. Georgia, 11/22/23 | 10, vs. Sam Houston State, 3/10/22* | |
| Minutes | 37, vs. Texas A&M, 11/16/23 | 41, at Chicago State, 3/2/22* | |

HARPER QUICK HITS

- Will play with her sister Alaina this season
- Tallied 1,500th career point against Illinois last year
- Finished third on the team in scoring last season
- One of 11 players from the Big Ten to average double figures and shoot better than 50% in 2022-23
- Transferred to Purdue after spending four seasons at Cal Baptist
- 2022 WAC Player of the Year and CoSIDA All-American
- Played parts of four seasons at Cal Baptist, starting in 2018-19
- Named the 2022 CoSIDA Academic All-America, 2021-22 WAC Player of the Year, 2021 WAC Tournament MVP

| SEASON | GP-GS | MIN/AVG | FG-FGA | FG% | 3FG-FGA | 3FG% | FT-FTA | FT% | OFF | DEF | TOT | AVG | PF-FO | AST | TO | BLK | STL | PTS | AVG |
|---------|--------|-----------|----------|------|---------|------|---------|-------|-----|-----|-----|-----|-------|-----|-----|-----|-----|------|------|
| 2018-19 | 29-3 | 470/16.2 | 100-203 | .493 | 11-52 | .212 | 40-58 | .690 | 36 | 84 | 120 | 4.1 | 49-0 | 23 | 38 | 21 | 11 | 251 | 8.7 |
| 2019-20 | 5-5 | 121/24.3 | 32-56 | .571 | 1-2 | .500 | 16-18 | .889 | 13 | 32 | 45 | 9.0 | 17-0 | 7 | 10 | 10 | 2 | 81 | 16.2 |
| 2020-21 | 27-10 | 642/23.8 | 149-281 | .530 | 27-70 | .386 | 60-76 | .789 | 62 | 140 | 202 | 7.5 | 67-0 | 35 | 50 | 34 | 31 | 385 | 14.3 |
| 2021-22 | 32-32 | 964/30.1 | 223-421 | .530 | 29-95 | .305 | 94-127 | .740 | 36 | 153 | 189 | 5.9 | 68-0 | 40 | 58 | 51 | 41 | 569 | 17.8 |
| 2022-23 | 30-29 | 713/23.8 | 127-232 | .547 | 17-52 | .327 | 41-53 | .774 | 38 | 78 | 116 | 3.9 | 65-1 | 18 | 49 | 18 | 18 | 312 | 10.4 |
| 2023-24 | 5-5 | 166/33.1 | 21-40 | .525 | 5-16 | .313 | 6-6 | 1.000 | 6 | 23 | 29 | 5.8 | 9-0 | 4 | 7 | 2 | 5 | 53 | 10.6 |
| PURDUE | 35-34 | 879/25.1 | 148-272 | .544 | 22-68 | .324 | 47-59 | .797 | 44 | 101 | 145 | 4.1 | 74-1 | 22 | 56 | 20 | 23 | 365 | 10.4 |
| TOTAL | 128-84 | 3075/24.0 | 652-1233 | .529 | 90-287 | .314 | 257-338 | .760 | 191 | 510 | 701 | 5.5 | 275-1 | 127 | 212 | 136 | 108 | 1651 | 12.9 |

2023-24 PURDUE WOMEN'S BASKETBALL GAME NOTES

2 | Rashunda Jones

| 2023-24 | Min. | FG | 3FG | FT | O-D-T | PF | Pts | A | To | S | B | +/- |
|---------------|------|------|-----|-----|-------|----|-----|---|----|---|---|-----|
| UCLA* | 20 | 2-7 | 0-2 | 0-0 | 0-1-1 | 3 | 4 | 0 | 1 | 0 | 0 | -33 |
| Southern | 15 | 1-8 | 1-3 | 1-2 | 0-2-2 | 3 | 4 | 1 | 4 | 0 | 1 | 4 |
| Texas A&M | 23 | 8-11 | 0-1 | 4-6 | 0-2-2 | 3 | 20 | 0 | 1 | 0 | 1 | 11 |
| Florida | 18 | 1-6 | 0-0 | 2-2 | 1-4-5 | 5 | 4 | 1 | 3 | 1 | 0 | 9 |
| Georgia | 21 | 4-8 | 0-0 | 2-2 | 1-4-5 | 2 | 10 | 0 | 3 | 1 | 0 | -10 |
| USI | | | | | | | | | | | | |
| Dayton | | | | | | | | | | | | |
| Valpo | | | | | | | | | | | | |
| SEMO | | | | | | | | | | | | |
| Minnesota | | | | | | | | | | | | |
| Notre Dame | | | | | | | | | | | | |
| Indiana State | | | | | | | | | | | | |
| Wisconsin | | | | | | | | | | | | |
| Rutgers | | | | | | | | | | | | |
| Maryland | | | | | | | | | | | | |
| Iowa | | | | | | | | | | | | |
| Penn State | | | | | | | | | | | | |
| Indiana | | | | | | | | | | | | |
| MSU | | | | | | | | | | | | |
| Ohio State | | | | | | | | | | | | |
| Nebraska | | | | | | | | | | | | |
| Illinois | | | | | | | | | | | | |
| Indiana | | | | | | | | | | | | |
| NU | | | | | | | | | | | | |
| Nebraska | | | | | | | | | | | | |
| MSU | | | | | | | | | | | | |
| Wisconsin | | | | | | | | | | | | |
| Penn State | | | | | | | | | | | | |
| Michigan | | | | | | | | | | | | |

* Started

^Big Ten Tournament

10 | Jeanae Terry

| 2023-24 | Min. | FG | 3FG | FT | O-D-T | PF | Pts | A | To | S | B | +/- |
|---------------|------|-----|-----|-----|---------|----|-----|----|----|---|---|-----|
| UCLA* | 30 | 1-5 | 0-0 | 3-4 | 1-6-7 | 2 | 5 | 4 | 2 | 1 | 0 | -23 |
| Southern* | 35 | 1-6 | 0-0 | 3-4 | 1-10-11 | 0 | 5 | 7 | 2 | 0 | 0 | 15 |
| Texas A&M* | 38 | 2-6 | 0-0 | 4-4 | 1-4-5 | 2 | 8 | 10 | 3 | 3 | 0 | 9 |
| Florida* | 25 | 0-2 | 0-0 | 0-0 | 2-2-4 | 0 | 0 | 2 | 0 | 1 | 0 | -10 |
| Georgia* | 26 | 2-4 | 0-0 | 0-1 | 0-1-1 | 2 | 4 | 4 | 4 | 0 | 0 | -9 |
| USI | | | | | | | | | | | | |
| Dayton | | | | | | | | | | | | |
| Valpo | | | | | | | | | | | | |
| SEMO | | | | | | | | | | | | |
| Minnesota | | | | | | | | | | | | |
| Notre Dame | | | | | | | | | | | | |
| Indiana State | | | | | | | | | | | | |
| Wisconsin | | | | | | | | | | | | |
| Rutgers | | | | | | | | | | | | |
| Maryland | | | | | | | | | | | | |
| Iowa | | | | | | | | | | | | |
| Penn State | | | | | | | | | | | | |
| Indiana | | | | | | | | | | | | |
| MSU | | | | | | | | | | | | |
| Ohio State | | | | | | | | | | | | |
| Nebraska | | | | | | | | | | | | |
| Illinois | | | | | | | | | | | | |
| Indiana | | | | | | | | | | | | |
| NU | | | | | | | | | | | | |
| Nebraska | | | | | | | | | | | | |
| MSU | | | | | | | | | | | | |
| Wisconsin | | | | | | | | | | | | |
| Penn State | | | | | | | | | | | | |
| Michigan | | | | | | | | | | | | |

* Started

^Big Ten Tournament

3 | Jayla Smith

| 2023-24 | Min. | FG | 3FG | FT | O-D-T | PF | Pts | A | To | S | B | +/- |
|---------------|------|------|-----|-----|-------|----|-----|---|----|---|---|-----|
| UCLA | 17 | 2-7 | 0-3 | 0-0 | 1-2-3 | 1 | 4 | 0 | 3 | 0 | 0 | -23 |
| Southern | DNP | | | | | | | | | | | |
| Texas A&M | 20 | 0-4 | 0-2 | 0-0 | 0-1-1 | 0 | 0 | 1 | 0 | 0 | 1 | 22 |
| Florida | 24 | 6-10 | 1-4 | 0-0 | 0-5-5 | 1 | 13 | 1 | 3 | 0 | 0 | -6 |
| Georgia | 17 | 0-4 | 0-2 | 0-0 | 0-2-2 | 0 | 0 | 0 | 0 | 0 | 0 | 1 |
| USI | | | | | | | | | | | | |
| Dayton | | | | | | | | | | | | |
| Valpo | | | | | | | | | | | | |
| SEMO | | | | | | | | | | | | |
| Minnesota | | | | | | | | | | | | |
| Notre Dame | | | | | | | | | | | | |
| Indiana State | | | | | | | | | | | | |
| Wisconsin | | | | | | | | | | | | |
| Rutgers | | | | | | | | | | | | |
| Maryland | | | | | | | | | | | | |
| Iowa | | | | | | | | | | | | |
| Penn State | | | | | | | | | | | | |
| Indiana | | | | | | | | | | | | |
| MSU | | | | | | | | | | | | |
| Ohio State | | | | | | | | | | | | |
| Nebraska | | | | | | | | | | | | |
| Illinois | | | | | | | | | | | | |
| Indiana | | | | | | | | | | | | |
| NU | | | | | | | | | | | | |
| Nebraska | | | | | | | | | | | | |
| MSU | | | | | | | | | | | | |
| Wisconsin | | | | | | | | | | | | |
| Penn State | | | | | | | | | | | | |
| Michigan | | | | | | | | | | | | |

* Started

^Big Ten Tournament

11 | McKenna Layden

| 2023-24 | Min. | FG | 3FG | FT | O-D-T | PF | Pts | A | To | S | B | +/- |
|---------------|------|-----|-----|-----|-------|----|-----|---|----|---|---|-----|
| UCLA | 15 | 1-4 | 1-2 | 1-2 | 1-0-1 | 0 | 4 | 0 | 0 | 1 | 0 | -25 |
| Southern | 19 | 0-3 | 0-3 | 0-0 | 0-4-4 | 0 | 0 | 2 | 1 | 1 | 0 | -5 |
| Texas A&M | 10 | 0-0 | 0-0 | 0-0 | 0-0-0 | 0 | 0 | 0 | 0 | 0 | 0 | 9 |
| Florida | 11 | 0-0 | 0-0 | 0-0 | 0-1-1 | 0 | 0 | 0 | 0 | 0 | 0 | -3 |
| Georgia | 4 | 0-2 | 0-2 | 0-0 | 0-1-1 | 0 | 0 | 0 | 0 | 1 | 0 | -2 |
| USI | | | | | | | | | | | | |
| Dayton | | | | | | | | | | | | |
| Valpo | | | | | | | | | | | | |
| SEMO | | | | | | | | | | | | |
| Minnesota | | | | | | | | | | | | |
| Notre Dame | | | | | | | | | | | | |
| Indiana State | | | | | | | | | | | | |
| Wisconsin | | | | | | | | | | | | |
| Rutgers | | | | | | | | | | | | |
| Maryland | | | | | | | | | | | | |
| Iowa | | | | | | | | | | | | |
| Penn State | | | | | | | | | | | | |
| Indiana | | | | | | | | | | | | |
| MSU | | | | | | | | | | | | |
| Ohio State | | | | | | | | | | | | |
| Nebraska | | | | | | | | | | | | |
| Illinois | | | | | | | | | | | | |
| Indiana | | | | | | | | | | | | |
| NU | | | | | | | | | | | | |
| Nebraska | | | | | | | | | | | | |
| MSU | | | | | | | | | | | | |
| Wisconsin | | | | | | | | | | | | |
| Penn State | | | | | | | | | | | | |
| Michigan | | | | | | | | | | | | |

* Started

^Big Ten Tournament



2023-24 PURDUE WOMEN'S BASKETBALL GAME NOTES

15 | Mila Reynolds

| 2023-24 | Min. | FG | 3FG | FT | O-D-T | PF | Pts | A | To | S | B | +/- |
|---------------|------|-----|-----|-----|-------|----|-----|---|----|---|---|-----|
| UCLA | 5 | 0-2 | 0-1 | 0-0 | 0-0-0 | 1 | 0 | 1 | 1 | 0 | 0 | -14 |
| Southern | 4 | 0-0 | 0-0 | 0-0 | 0-0-0 | 1 | 0 | 0 | 0 | 0 | 0 | -4 |
| Texas A&M | DNP | | | | | | | | | | | |
| Florida | DNP | | | | | | | | | | | |
| Georgia | DNP | | | | | | | | | | | |
| USI | | | | | | | | | | | | |
| Dayton | | | | | | | | | | | | |
| Valpo | | | | | | | | | | | | |
| SEMO | | | | | | | | | | | | |
| Minnesota | | | | | | | | | | | | |
| Notre Dame | | | | | | | | | | | | |
| Indiana State | | | | | | | | | | | | |
| Wisconsin | | | | | | | | | | | | |
| Rutgers | | | | | | | | | | | | |
| Maryland | | | | | | | | | | | | |
| Iowa | | | | | | | | | | | | |
| Penn State | | | | | | | | | | | | |
| Indiana | | | | | | | | | | | | |
| MSU | | | | | | | | | | | | |
| Ohio State | | | | | | | | | | | | |
| Nebraska | | | | | | | | | | | | |
| Illinois | | | | | | | | | | | | |
| Indiana | | | | | | | | | | | | |
| NU | | | | | | | | | | | | |
| Nebraska | | | | | | | | | | | | |
| MSU | | | | | | | | | | | | |
| Wisconsin | | | | | | | | | | | | |
| Penn State | | | | | | | | | | | | |
| Michigan | | | | | | | | | | | | |

* Started

^Big Ten Tournament

21 | Emily Monson

| 2023-24 | Min. | FG | 3FG | FT | O-D-T | PF | Pts | A | To | S | B | +/- |
|---------------|------|-----|-----|-----|-------|----|-----|---|----|---|---|-----|
| UCLA | 4 | 1-1 | 1-1 | 1-2 | 0-0-0 | 0 | 4 | 0 | 2 | 1 | 0 | -2 |
| Southern | 3 | 0-0 | 0-0 | 0-0 | 1-0-1 | 0 | 0 | 0 | 1 | 0 | 0 | -1 |
| Texas A&M | DNP | | | | | | | | | | | |
| Florida | 3 | 0-1 | 0-1 | 0-0 | 0-0-0 | 0 | 0 | 0 | 0 | 0 | 0 | 4 |
| Georgia | DNP | | | | | | | | | | | |
| USI | | | | | | | | | | | | |
| Dayton | | | | | | | | | | | | |
| Valpo | | | | | | | | | | | | |
| SEMO | | | | | | | | | | | | |
| Minnesota | | | | | | | | | | | | |
| Notre Dame | | | | | | | | | | | | |
| Indiana State | | | | | | | | | | | | |
| Wisconsin | | | | | | | | | | | | |
| Rutgers | | | | | | | | | | | | |
| Maryland | | | | | | | | | | | | |
| Iowa | | | | | | | | | | | | |
| Penn State | | | | | | | | | | | | |
| Indiana | | | | | | | | | | | | |
| MSU | | | | | | | | | | | | |
| Ohio State | | | | | | | | | | | | |
| Nebraska | | | | | | | | | | | | |
| Illinois | | | | | | | | | | | | |
| Indiana | | | | | | | | | | | | |
| NU | | | | | | | | | | | | |
| Nebraska | | | | | | | | | | | | |
| MSU | | | | | | | | | | | | |
| Wisconsin | | | | | | | | | | | | |
| Penn State | | | | | | | | | | | | |
| Michigan | | | | | | | | | | | | |

* Started

^Big Ten Tournament

20 | Mary Ashley Stevenson

| 2023-24 | Min. | FG | 3FG | FT | O-D-T | PF | Pts | A | To | S | B | +/- |
|---------------|------|------|-----|-----|-------|----|-----|---|----|---|---|-----|
| UCLA | 27 | 3-5 | 0-1 | 2-2 | 2-0-2 | 3 | 8 | 2 | 3 | 1 | 1 | -25 |
| Southern* | 28 | 5-9 | 0-1 | 3-3 | 1-4-5 | 2 | 13 | 0 | 4 | 0 | 1 | 22 |
| Texas A&M* | 9 | 1-3 | 0-0 | 0-0 | 2-1-3 | 3 | 2 | 0 | 0 | 0 | 0 | -1 |
| Florida* | 26 | 2-8 | 0-2 | 2-4 | 4-2-6 | 3 | 6 | 0 | 0 | 0 | 1 | 2 |
| Georgia* | 32 | 4-11 | 0-1 | 3-3 | 2-1-3 | 1 | 11 | 2 | 3 | 1 | 0 | -12 |
| USI | | | | | | | | | | | | |
| Dayton | | | | | | | | | | | | |
| Valpo | | | | | | | | | | | | |
| SEMO | | | | | | | | | | | | |
| Minnesota | | | | | | | | | | | | |
| Notre Dame | | | | | | | | | | | | |
| Indiana State | | | | | | | | | | | | |
| Wisconsin | | | | | | | | | | | | |
| Rutgers | | | | | | | | | | | | |
| Maryland | | | | | | | | | | | | |
| Iowa | | | | | | | | | | | | |
| Penn State | | | | | | | | | | | | |
| Indiana | | | | | | | | | | | | |
| MSU | | | | | | | | | | | | |
| Ohio State | | | | | | | | | | | | |
| Nebraska | | | | | | | | | | | | |
| Illinois | | | | | | | | | | | | |
| Indiana | | | | | | | | | | | | |
| NU | | | | | | | | | | | | |
| Nebraska | | | | | | | | | | | | |
| MSU | | | | | | | | | | | | |
| Wisconsin | | | | | | | | | | | | |
| Penn State | | | | | | | | | | | | |
| Michigan | | | | | | | | | | | | |

* Started

^Big Ten Tournament

23 | Abbey Ellis

| 2023-24 | Min. | FG | 3FG | FT | O-D-T | PF | Pts | A | To | S | B | +/- |
|---------------|------|------|-----|-----|-------|----|-----|---|----|---|---|-----|
| UCLA* | 22 | 4-8 | 0-3 | 2-2 | 0-2-2 | 0 | 10 | 0 | 4 | 1 | 0 | -9 |
| Southern* | 28 | 3-11 | 1-6 | 7-9 | 0-4-4 | 3 | 14 | 4 | 3 | 3 | 0 | 14 |
| Texas A&M* | 34 | 9-18 | 2-4 | 0-0 | 0-0-0 | 2 | 20 | 2 | 1 | 1 | 0 | 8 |
| Florida* | 36 | 3-13 | 1-9 | 7-7 | 0-5-5 | 4 | 14 | 1 | 4 | 3 | 0 | -4 |
| Georgia* | 30 | 4-12 | 1-4 | 2-2 | 3-3-6 | 1 | 11 | 1 | 4 | 0 | 0 | -2 |
| USI | | | | | | | | | | | | |
| Dayton | | | | | | | | | | | | |
| Valpo | | | | | | | | | | | | |
| SEMO | | | | | | | | | | | | |
| Minnesota | | | | | | | | | | | | |
| Notre Dame | | | | | | | | | | | | |
| Indiana State | | | | | | | | | | | | |
| Wisconsin | | | | | | | | | | | | |
| Rutgers | | | | | | | | | | | | |
| Maryland | | | | | | | | | | | | |
| Iowa | | | | | | | | | | | | |
| Penn State | | | | | | | | | | | | |
| Indiana | | | | | | | | | | | | |
| MSU | | | | | | | | | | | | |
| Ohio State | | | | | | | | | | | | |
| Nebraska | | | | | | | | | | | | |
| Illinois | | | | | | | | | | | | |
| Indiana | | | | | | | | | | | | |
| NU | | | | | | | | | | | | |
| Nebraska | | | | | | | | | | | | |
| MSU | | | | | | | | | | | | |
| Wisconsin | | | | | | | | | | | | |
| Penn State | | | | | | | | | | | | |
| Michigan | | | | | | | | | | | | |

* Started

^Big Ten Tournament



2023-24 PURDUE WOMEN'S BASKETBALL GAME NOTES

31 | Sophie Swanson

| 2023-24 | Min. | FG | 3FG | FT | O-D-T | PF | Pts | A | To | S | B | +/- |
|---------------|------|----|-----|----|-------|----|-----|---|----|---|---|-----|
| UCLA | DNP | | | | | | | | | | | |
| Southern | DNP | | | | | | | | | | | |
| Texas A&M | DNP | | | | | | | | | | | |
| Florida | DNP | | | | | | | | | | | |
| Georgia | DNP | | | | | | | | | | | |
| USI | | | | | | | | | | | | |
| Dayton | | | | | | | | | | | | |
| Valpo | | | | | | | | | | | | |
| SEMO | | | | | | | | | | | | |
| Minnesota | | | | | | | | | | | | |
| Notre Dame | | | | | | | | | | | | |
| Indiana State | | | | | | | | | | | | |
| Wisconsin | | | | | | | | | | | | |
| Rutgers | | | | | | | | | | | | |
| Maryland | | | | | | | | | | | | |
| Iowa | | | | | | | | | | | | |
| Penn State | | | | | | | | | | | | |
| Indiana | | | | | | | | | | | | |
| MSU | | | | | | | | | | | | |
| Ohio State | | | | | | | | | | | | |
| Nebraska | | | | | | | | | | | | |
| Illinois | | | | | | | | | | | | |
| Indiana | | | | | | | | | | | | |
| NU | | | | | | | | | | | | |
| Nebraska | | | | | | | | | | | | |
| MSU | | | | | | | | | | | | |
| Wisconsin | | | | | | | | | | | | |
| Penn State | | | | | | | | | | | | |
| Michigan | | | | | | | | | | | | |

* Started

^Big Ten Tournament

33 | Madison Layden

| 2023-24 | Min. | FG | 3FG | FT | O-D-T | PF | Pts | A | To | S | B | +/- |
|---------------|------|------|-----|-----|-------|----|-----|---|----|---|---|-----|
| UCLA* | 28 | 0-3 | 0-2 | 0-0 | 0-1-1 | 0 | 0 | 1 | 1 | 0 | 0 | -33 |
| Southern* | 36 | 5-6 | 4-5 | 7-8 | 1-3-4 | 4 | 21 | 2 | 1 | 3 | 0 | 17 |
| Texas A&M* | 27 | 2-8 | 1-5 | 3-4 | 1-4-5 | 3 | 8 | 0 | 2 | 2 | 1 | -2 |
| Florida* | 23 | 0-5 | 0-3 | 0-0 | 0-2-2 | 1 | 0 | 0 | 2 | 0 | 0 | -7 |
| Georgia* | 32 | 5-12 | 4-8 | 0-0 | 0-2-2 | 4 | 14 | 1 | 2 | 1 | 0 | 2 |
| USI | | | | | | | | | | | | |
| Dayton | | | | | | | | | | | | |
| Valpo | | | | | | | | | | | | |
| SEMO | | | | | | | | | | | | |
| Minnesota | | | | | | | | | | | | |
| Notre Dame | | | | | | | | | | | | |
| Indiana State | | | | | | | | | | | | |
| Wisconsin | | | | | | | | | | | | |
| Rutgers | | | | | | | | | | | | |
| Maryland | | | | | | | | | | | | |
| Iowa | | | | | | | | | | | | |
| Penn State | | | | | | | | | | | | |
| Indiana | | | | | | | | | | | | |
| MSU | | | | | | | | | | | | |
| Ohio State | | | | | | | | | | | | |
| Nebraska | | | | | | | | | | | | |
| Illinois | | | | | | | | | | | | |
| Indiana | | | | | | | | | | | | |
| NU | | | | | | | | | | | | |
| Nebraska | | | | | | | | | | | | |
| MSU | | | | | | | | | | | | |
| Wisconsin | | | | | | | | | | | | |
| Penn State | | | | | | | | | | | | |
| Michigan | | | | | | | | | | | | |

* Started

^Big Ten Tournament

32 | Alaina Harper

| 2023-24 | Min. | FG | 3FG | FT | O-D-T | PF | Pts | A | To | S | B | +/- |
|---------------|------|-----|-----|-------|-------|----|-----|---|----|---|---|-----|
| UCLA | 3 | 0-0 | 0-0 | 0-0 | 0-0-0 | 1 | 0 | 0 | 0 | 0 | 0 | -3 |
| Southern | 2 | 0-0 | 0-0 | 0-0 | 0-0-0 | 0 | 0 | 0 | 0 | 0 | 0 | 2 |
| Texas A&M | 3 | 0-0 | 0-0 | 0-0 | 0-1-1 | 1 | 0 | 0 | 1 | 0 | 0 | 1 |
| Florida | 2 | 0-0 | 0-0 | 0-0-0 | 0 | 0 | 0 | 0 | 0 | 0 | 0 | 0 |
| Georgia | 11 | 0-0 | 0-0 | 0-0 | 0-1-1 | 0 | 0 | 0 | 1 | 0 | 0 | -5 |
| USI | | | | | | | | | | | | |
| Dayton | | | | | | | | | | | | |
| Valpo | | | | | | | | | | | | |
| SEMO | | | | | | | | | | | | |
| Minnesota | | | | | | | | | | | | |
| Notre Dame | | | | | | | | | | | | |
| Indiana State | | | | | | | | | | | | |
| Wisconsin | | | | | | | | | | | | |
| Rutgers | | | | | | | | | | | | |
| Maryland | | | | | | | | | | | | |
| Iowa | | | | | | | | | | | | |
| Penn State | | | | | | | | | | | | |
| Indiana | | | | | | | | | | | | |
| MSU | | | | | | | | | | | | |
| Ohio State | | | | | | | | | | | | |
| Nebraska | | | | | | | | | | | | |
| Illinois | | | | | | | | | | | | |
| Indiana | | | | | | | | | | | | |
| NU | | | | | | | | | | | | |
| Nebraska | | | | | | | | | | | | |
| MSU | | | | | | | | | | | | |
| Wisconsin | | | | | | | | | | | | |
| Penn State | | | | | | | | | | | | |
| Michigan | | | | | | | | | | | | |

* Started

^Big Ten Tournament

34 | Caitlyn Harper

| 2023-24 | Min. | FG | 3FG | FT | O-D-T | PF | Pts | A | To | S | B | +/- |
|---------------|------|------|-----|-----|--------|----|-----|---|----|---|---|-----|
| UCLA* | 31 | 3-8 | 2-6 | 2-2 | 0-2-2 | 2 | 10 | 0 | 1 | 1 | 1 | -25 |
| Southern* | 32 | 5-8 | 0-2 | 0-0 | 1-6-7 | 3 | 10 | 3 | 4 | 0 | 0 | 21 |
| Texas A&M* | 37 | 5-8 | 2-3 | 2-2 | 3-8-11 | 0 | 14 | 1 | 1 | 1 | 0 | 13 |
| Florida* | 36 | 6-12 | 0-3 | 0-0 | 0-5-5 | 1 | 12 | 0 | 1 | 1 | 0 | 0 |
| Georgia* | 31 | 2-4 | 1-2 | 2-2 | 2-2-4 | 3 | 7 | 0 | 0 | 2 | 1 | -3 |
| USI | | | | | | | | | | | | |
| Dayton | | | | | | | | | | | | |
| Valpo | | | | | | | | | | | | |
| SEMO | | | | | | | | | | | | |
| Minnesota | | | | | | | | | | | | |
| Notre Dame | | | | | | | | | | | | |
| Indiana State | | | | | | | | | | | | |
| Wisconsin | | | | | | | | | | | | |
| Rutgers | | | | | | | | | | | | |
| Maryland | | | | | | | | | | | | |
| Iowa | | | | | | | | | | | | |
| Penn State | | | | | | | | | | | | |
| Indiana | | | | | | | | | | | | |
| MSU | | | | | | | | | | | | |
| Ohio State | | | | | | | | | | | | |
| Nebraska | | | | | | | | | | | | |
| Illinois | | | | | | | | | | | | |
| Indiana | | | | | | | | | | | | |
| NU | | | | | | | | | | | | |
| Nebraska | | | | | | | | | | | | |
| MSU | | | | | | | | | | | | |
| Wisconsin | | | | | | | | | | | | |
| Penn State | | | | | | | | | | | | |
| Michigan | | | | | | | | | | | | |

* Started

^Big Ten Tournament





2023-24 Purdue Women's Basketball Combined Team Statistics All games

Page 1/1
as of Nov 22, 2023

Game Records

| Record | Overall | Home | Away | Neutral |
|----------------|---------|------|------|---------|
| ALL GAMES | 2-3 | 2-0 | 0-1 | 0-2 |
| CONFERENCE | 0-0 | 0-0 | 0-0 | 0-0 |
| NON-CONFERENCE | 2-3 | 2-0 | 0-1 | 0-2 |

Score by Periods

| Team | 1st | 2nd | 3rd | 4th | OT | TOT |
|-----------|-----|-----|-----|-----|----|-----|
| Purdue | 63 | 74 | 101 | 56 | 0 | 294 |
| Opponents | 80 | 62 | 92 | 83 | 0 | 317 |

Team Box Score

| No. | Player | | | | Total | | 3-Point | | F-Throw | | Rebounds | | | | | | | | | | | |
|------------------|------------------------|----------|-------------|------|----------------|-------------|--------------|-------------|--------------|-------------|-----------|------------|------------|-------------|-----------|----------|-----------|-----------|-----------|-----------|------------|-------------|
| | | GP-GS | MIN | AVG | FG-FGA | FG% | 3FG-3FGA | 3FG% | FT-FTA | FT% | OFF | DEF | TOT | AVG | PF | DQ | A | TO | BLK | STL | PTS | AVG |
| 23 | ELLIS, Abbey | 5-5 | 148:43 | 29.7 | 23-62 | .371 | 5-26 | .192 | 18-20 | .900 | 3 | 14 | 17 | 3.4 | 10 | 0 | 8 | 16 | 0 | 8 | 69 | 13.8 |
| 34 | HARPER, Caitlyn | 5-5 | 165:42 | 33.1 | 21-40 | .525 | 5-16 | .313 | 6-6 | 1.000 | 6 | 23 | 29 | 5.8 | 9 | 0 | 4 | 7 | 2 | 5 | 53 | 10.6 |
| 33 | LAYDEN, Madison | 5-5 | 144:56 | 29.0 | 12-34 | .353 | 9-23 | .391 | 10-12 | .833 | 2 | 12 | 14 | 2.8 | 12 | 0 | 4 | 8 | 1 | 6 | 43 | 8.6 |
| 2 | JONES, Rashunda | 5-0 | 96:07 | 19.2 | 16-40 | .400 | 1-6 | .167 | 9-12 | .750 | 2 | 13 | 15 | 3.0 | 16 | 1 | 2 | 12 | 2 | 2 | 42 | 8.4 |
| 20 | STEVENSON, Mary Ashley | 5-4 | 119:40 | 23.9 | 15-36 | .417 | 0-5 | .000 | 10-12 | .833 | 11 | 8 | 19 | 3.8 | 12 | 0 | 4 | 10 | 3 | 2 | 40 | 8.0 |
| 10 | TERRY, Jeanae | 5-5 | 153:06 | 30.6 | 6-23 | .261 | 0-0 | .000 | 10-13 | .769 | 5 | 23 | 28 | 5.6 | 6 | 0 | 27 | 11 | 0 | 5 | 22 | 4.4 |
| 3 | SMITH, Jayla | 4-1 | 77:15 | 19.3 | 8-25 | .320 | 1-11 | .091 | 0-0 | .000 | 1 | 10 | 11 | 2.8 | 2 | 0 | 2 | 6 | 1 | 0 | 17 | 4.3 |
| 21 | MONSON, Emily | 3-0 | 08:20 | 2.8 | 1-2 | .500 | 1-2 | .500 | 1-2 | .500 | 1 | 0 | 1 | 0.3 | 0 | 0 | 0 | 3 | 0 | 1 | 4 | 1.3 |
| 11 | LAYDEN, McKenna | 5-0 | 56:35 | 11.3 | 1-9 | .111 | 1-7 | .143 | 1-2 | .500 | 1 | 6 | 7 | 1.4 | 0 | 0 | 2 | 1 | 0 | 3 | 4 | 0.8 |
| 32 | HARPER, Alaina | 5-0 | 20:53 | 4.2 | 0-0 | .000 | 0-0 | .000 | 0-0 | .000 | 0 | 2 | 2 | 0.4 | 2 | 0 | 0 | 2 | 0 | 0 | 0 | 0.0 |
| 15 | REYNOLDS, Mila | 2-0 | 08:42 | 4.4 | 0-2 | .000 | 0-1 | .000 | 0-0 | .000 | 0 | 0 | 0 | 0.0 | 2 | 0 | 1 | 1 | 0 | 0 | 0 | 0.0 |
| Team | | | | | | | | | | | 14 | 11 | 25 | | | | 5 | | | | | |
| Total | | 5 | 1000 | | 103-273 | .377 | 23-97 | .237 | 65-79 | .823 | 46 | 122 | 168 | 33.6 | 71 | 1 | 54 | 82 | 9 | 32 | 294 | 58.8 |
| Opponents | | 5 | 1000 | | 115-299 | .385 | 29-86 | .337 | 58-79 | .734 | 66 | 123 | 189 | 37.8 | 86 | 1 | 60 | 80 | 17 | 49 | 317 | 63.4 |

Team Statistics

| | PURDUE | OPP |
|------------------------|----------------|----------------|
| Scoring | 294 | 317 |
| Points per game | 58.8 | 63.4 |
| Scoring margin | -4.6 | - |
| Field goals-att | 103-273 | 115-299 |
| Field goal pct | .377 | .385 |
| 3 point fg-att | 23-97 | 29-86 |
| 3-point FG pct | .237 | .337 |
| 3-pt FG made per game | 4.6 | 5.8 |
| Free throws-att | 65-79 | 58-79 |
| Free throw pct | .823 | .734 |
| F-Throws made per game | 13.0 | 11.6 |
| Rebounds | 168 | 189 |
| Rebounds per game | 33.6 | 37.8 |
| Rebounding margin | -4.2 | - |
| Assists | 54 | 60 |
| Assists per game | 10.8 | 12.0 |
| Turnovers | 82 | 80 |
| Turnovers per game | 16.4 | 16.0 |
| Turnover margin | -0.4 | - |
| Assist/turnover ratio | 0.7 | 0.8 |
| Steals | 32 | 49 |
| Steals per game | 6.4 | 9.8 |
| Blocks | 9 | 17 |
| Blocks per game | 1.8 | 3.4 |
| Winning streak | 0 | - |
| Home win streak | 2 | - |
| Attendance | 10225 | 2157 |
| Home games-Avg/Game | 2-5113 | 1-2157 |
| Neutral site-Avg/Game | - | 2-358 |

Team Results

| Date | Opponent | | Score | Att. |
|------------|-------------|---|-------|------|
| 11/06/2023 | at UCLA | L | 49-92 | 2157 |
| 11/12/2023 | Southern U. | W | 67-50 | 5002 |
| 11/16/2023 | Texas A&M | W | 72-58 | 5223 |
| 11/20/2023 | vs Florida | L | 49-52 | 437 |
| 11/22/2023 | vs Georgia | L | 57-65 | 278 |



2023-24 PURDUE WOMEN'S BASKETBALL GAME NOTES

Official Basketball Box Score - Final

Georgia at Purdue

11/22/23 Baha Mar Convention Center, Nassau
2023-24 Women's Basketball

Game Time: 4:00 PM

Game Duration: 1:43

Attendance: 278

Officials: Nykesha Thompson, Karab=nce Larence, Corey Malone

Georgia - 65

Record: 5-1

| NO. | Name | Min | FG | 3P | FT | Rebounds | Fouls | TP | AS | TO | ST | Blocks | +/- |
|---------------|-------------------|---------|-------|-----|-------|-----------|-------|----|----|----|----|--------|-----|
| | | | M-A | M-A | M-A | OR DR TOT | PF FD | | | | | BS BA | |
| 0 | Zoesha Smith | F 36:06 | 4-7 | 0-0 | 0-0 | 2 4 6 | 1 1 | 8 | 3 | 1 | 4 | 0 0 | 11 |
| 20 | Jordan Cole | F 20:44 | 1-5 | 0-0 | 3-6 | 4 3 7 | 2 4 | 5 | 0 | 3 | 2 | 0 0 | 16 |
| 33 | Destiny Thomas | F 24:39 | 3-6 | 0-0 | 0-0 | 3 3 6 | 2 1 | 6 | 0 | 2 | 1 | 1 0 | -4 |
| 10 | De'Mauri Flournoy | G 17:25 | 1-7 | 0-3 | 0-0 | 0 0 0 | 1 2 | 2 | 1 | 0 | 1 | 0 0 | 8 |
| 11 | Asia Avinger | G 21:01 | 3-9 | 2-4 | 0-1 | 3 1 4 | 2 1 | 8 | 0 | 1 | 1 | 1 0 | 3 |
| 35 | Javyn Nicholson | 29:01 | 7-14 | 0-0 | 4-4 | 2 7 9 | 2 1 | 18 | 0 | 3 | 2 | 0 0 | 10 |
| 1 | Chloe Chapman | 25:35 | 1-5 | 0-0 | 0-0 | 0 4 4 | 1 0 | 2 | 5 | 5 | 3 | 0 0 | -2 |
| 12 | Taniyah Thompson | 17:11 | 6-11 | 0-2 | 4-4 | 1 2 3 | 0 2 | 16 | 0 | 0 | 1 | 0 1 | 7 |
| 13 | Stefanie Ingram | 02:42 | 0-0 | 0-0 | 0-0 | 0 1 1 | 0 0 | 0 | 0 | 0 | 0 | 0 0 | -3 |
| 30 | Amiya Evans | 01:25 | 0-1 | 0-0 | 0-0 | 0 0 0 | 2 0 | 0 | 0 | 0 | 0 | 0 0 | -2 |
| 21 | Fatima Diakhate | 04:11 | 0-0 | 0-0 | 0-0 | 0 0 0 | 0 0 | 0 | 0 | 0 | 0 | 0 0 | -4 |
| Team | | | | | | 3 0 3 | | 0 | | 0 | | | |
| Totals | | | 26-65 | 2-9 | 11-15 | 18 25 43 | 13 12 | 65 | 9 | 15 | 15 | 2 1 | 8 |

Technical Fouls::NONE

| Shooting By Period | | |
|---------------------|-------|-------|
| 1 st FG% | 8-18 | 44.4% |
| 3PT% | 0-2 | 0.0% |
| FT% | 0-0 | 0% |
| 2 nd FG% | 4-17 | 23.5% |
| 3PT% | 0-2 | 0.0% |
| FT% | 4-5 | 80% |
| 3 rd FG% | 6-17 | 35.3% |
| 3PT% | 2-3 | 66.7% |
| FT% | 4-6 | 66.7% |
| 4 th FG% | 8-13 | 61.5% |
| 3PT% | 0-2 | 0.0% |
| FT% | 3-4 | 75% |
| GM FG% | 26-65 | 40.0% |
| 3PT% | 2-9 | 22.2% |
| FT% | 11-15 | 73.3% |

Dead Ball Rebounds: 4, 0

Purdue - 57

Record: 2-3

| NO. | Name | Min | FG | 3P | FT | Rebounds | Fouls | TP | AS | TO | ST | Blocks | +/- |
|---------------|-----------------------|---------|-------|------|------|-----------|-------|----|----|----|----|--------|-----|
| | | | M-A | M-A | M-A | OR DR TOT | PF FD | | | | | BS BA | |
| 20 | Mary Ashley Stevenson | F 31:24 | 4-11 | 0-1 | 3-3 | 2 1 3 | 1 4 | 11 | 2 | 3 | 1 | 0 0 | -12 |
| 34 | Caitlyn Harper | F 30:24 | 2-4 | 1-2 | 2-2 | 2 2 4 | 3 1 | 7 | 0 | 0 | 2 | 1 0 | -3 |
| 10 | Jeanae Terry | G 25:40 | 2-4 | 0-0 | 0-1 | 0 1 1 | 2 2 | 4 | 4 | 4 | 0 | 0 0 | -9 |
| 23 | Abbey Ellis | G 30:00 | 4-12 | 1-4 | 2-2 | 3 3 6 | 1 2 | 11 | 1 | 4 | 0 | 0 0 | -2 |
| 33 | Madison Layden | G 31:10 | 5-12 | 4-8 | 0-0 | 0 2 2 | 4 1 | 14 | 1 | 2 | 1 | 0 0 | 2 |
| 2 | Rashunda Jones | 20:23 | 4-8 | 0-0 | 2-2 | 1 4 5 | 2 1 | 10 | 0 | 3 | 1 | 0 1 | -10 |
| 3 | Jayla Smith | 16:41 | 0-4 | 0-2 | 0-0 | 0 2 2 | 0 0 | 0 | 0 | 0 | 0 | 0 1 | 1 |
| 32 | Alaina Harper | 10:41 | 0-0 | 0-0 | 0-0 | 0 1 1 | 0 1 | 0 | 0 | 1 | 0 | 0 0 | -5 |
| 11 | McKenna Layden | 03:37 | 0-2 | 0-2 | 0-0 | 0 1 1 | 0 1 | 0 | 0 | 0 | 1 | 0 0 | -2 |
| Team | | | | | | 3 3 6 | | 0 | | 0 | | | |
| Totals | | | 21-57 | 6-19 | 9-10 | 11 20 31 | 13 13 | 57 | 8 | 17 | 6 | 1 2 | -8 |

Technical Fouls:Ellis 4th4:26

| Shooting By Period | | |
|---------------------|-------|-------|
| 1 st FG% | 5-12 | 41.7% |
| 3PT% | 0-4 | 0.0% |
| FT% | 2-2 | 100% |
| 2 nd FG% | 5-12 | 41.7% |
| 3PT% | 1-3 | 33.3% |
| FT% | 5-5 | 100% |
| 3 rd FG% | 6-19 | 31.6% |
| 3PT% | 4-7 | 57.1% |
| FT% | 0-1 | 0% |
| 4 th FG% | 5-14 | 35.7% |
| 3PT% | 1-5 | 20.0% |
| FT% | 2-2 | 100% |
| GM FG% | 21-57 | 36.8% |
| 3PT% | 6-19 | 31.6% |
| FT% | 9-10 | 90.0% |

Dead Ball Rebounds: 1, 1

| | UGA | PUR |
|------------------|---------------------------|--------------------------|
| Biggest lead | 14 (4 th 4:26) | 5 (3 rd 6:55) |
| Best Scoring Run | 12(4 th 4:26) | 8(3 rd 6:55) |
| Lead Changes | 8 | |
| Times Tied | 7 | |
| Time with Lead | 25:00 | 06:24 |

| Points from | UGA | PUR |
|---------------|-----|-----|
| Turnovers | 20 | 8 |
| Paint | 36 | 26 |
| Second Chance | 19 | 14 |
| Fast Breaks | 14 | 15 |
| Bench | 36 | 10 |

| Period by Period Scoring | | | | | |
|--------------------------|-----|-----|-----|-----|-----|
| | 1st | 2nd | 3rd | 4th | TOT |
| UGA | 16 | 12 | 18 | 19 | 65 |
| PUR | 12 | 16 | 16 | 13 | 57 |

2023-24 PURDUE WOMEN'S BASKETBALL GAME NOTES



PURDUE BOILERMAKERS

Overall - 2-3 | BIG - 0-0 | Streak - L2 | AP - - | Coaches - - | NET - - | Home - 2-0 | Away - 0-1 | Neutral - 0-2 | Post - 0-0
 Offense - 58.8 | Defense - 63.4 | Scoring Margin - -4.6 | Field Goal% - .377 | Field Goal% Defense - .385 | 3-Pt.(PG) - .237 (4.6)
 Opp 3-Pt.(PG) - .337 (5.8) | FT % (PG) - .823 (13.0) | Rebounding - 33.6 | Rebound Margin - -4.2 | Assists - 10.8 | Turnovers - 16.4 | TO Margin - -0.4

2023-24 SCHEDULE

| Opponent | Date/Result |
|--------------------|-------------|
| Quincy (ex) | W, 106-45 |
| at #4 UCLA | L, 92-49 |
| Southern | W, 67-50 |
| Texas A&M | W, 72-58 |
| vs. Florida (1) | L, 52-49 |
| vs. Georgia (1) | L, 65-57 |
| Southern Indiana | Nov. 26 |
| Dayton | Dec. 1 |
| Valparaiso | Dec. 3 |
| SEMO | Dec. 6 |
| at Minnesota | Dec. 10 |
| at Notre Dame | Dec. 17 |
| Indiana State | Dec. 20 |
| Wisconsin | Dec. 30 |
| Rutgers | Jan. 2 |
| at Maryland | Jan. 6 |
| Iowa | Jan. 10 |
| at Penn State | Jan. 18 |
| Indiana | Jan. 21 |
| at Michigan State | Jan. 24 |
| Ohio State | Jan. 28 |
| at Nebraska | Jan. 31 |
| Illinois | Feb. 5 |
| at Indiana | Feb. 11 |
| at Northwestern | Feb. 14 |
| Nebraska | Feb. 17 |
| Michigan State | Feb. 21 |
| at Wisconsin | Feb. 25 |
| Penn State | Feb. 28 |
| at Michigan | March 3 |
| Big Ten Tournament | March 6-10 |

- Baha Mar Pink Flamingo Championship (The Bahamas)
- BIG Tournament (Minneapolis)

HEAD COACH KATIE GEARLDS

Purdue Record - 38-29 (2nd)
 Career Record - 266-79 (10th)
 Alma Mater - Purdue '07
 Highlights - 2x NAIA National Champ, 3x NAIA Coach of the Year, 8 years at Marian, 7th Overall to Seattle in 2007 Draft, Legend of Mackey, 2007 All-America

COACHING STAFF

Asso. Head Coach Kelly Komara
 Assistant Coach Mark Stephens
 Assistant Coach Alex Guyton

PRONUNCIATIONS

1 - Amiyah Reynolds ah-MY-yah
 2 - Rashunda Jones ra-SHUN-da
 15 - Mila Reynolds MEE-la
 32 - Alaina Harper ah-LAY-na
 Katie Gearlds soft g
 (like the first name)
 Kelly Komara kom-AIR-ah

1 • Amiyah Reynolds • Fr. • G • 6-1 • South Bend, Ind • South Bend Washington

| GP/GS | MIN. | PPG | RPG | APG | STLS | BLKS | FG% | 3P% | FT% |
|-------|------|-----|-----|-----|------|------|-----|-----|-----|
| - | - | - | - | - | - | - | - | - | - |

LAST GAME: Will miss the season due to injury from her senior year of high school

2 • Rashunda Jones • Fr. • G • 5-8 • South Bend, Ind. • South Bend Washington

| GP/GS | MIN. | PPG | RPG | APG | STLS | BLKS | FG% | 3P% | FT% |
|-------|------|-----|-----|-----|------|------|------|------|------|
| 5/0 | 19.2 | 8.4 | 3.0 | 0.4 | 0.4 | 0.4 | .400 | .167 | .750 |

LAST GAME: 10 pts, 5 rebs, 4-8 fg, 21 mins

3 • Jayla Smith • Jr. • G • 6-0 • Indianapolis, Ind. • Lawrence North

| GP/GS | MIN. | PPG | RPG | APG | STLS | BLKS | FG% | 3P% | FT% |
|-------|------|-----|-----|-----|------|------|------|------|------|
| 4/1 | 19.3 | 4.3 | 2.8 | 0.5 | 0.0 | 0.3 | .320 | .091 | .000 |

LAST GAME: 2 rebs, 17 mins

10 • Jeanae Terry • 5th • G • 5-11 • Detroit, Mich. • Wayne Memorial • Illinois

| GP/GS | MIN. | PPG | RPG | APG | STLS | BLKS | FG% | 3P% | FT% |
|-------|------|-----|-----|-----|------|------|------|------|------|
| 5/5 | 30.6 | 4.4 | 5.6 | 5.4 | 1.0 | 0.0 | .261 | .000 | .769 |

LAST GAME: 4 pts, 1 reb, 4 asts, 26 mins

11 • McKenna Layden • Fr. • G • 6-2 • Kokomo, Ind. • Northwestern

| GP/GS | MIN. | PPG | RPG | APG | STLS | BLKS | FG% | 3P% | FT% |
|-------|------|-----|-----|-----|------|------|------|------|------|
| 5/0 | 11.3 | 0.8 | 1.4 | 0.4 | 0.6 | 0.0 | .111 | .143 | .500 |

LAST GAME: 1 reb, 1 stl, 4 mins

15 • Mila Reynolds • So. • F • 6-3 • South Bend, Ind. • South Bend Washington • Maryland

| GP/GS | MIN. | PPG | RPG | APG | STLS | BLKS | FG% | 3P% | FT% |
|-------|------|-----|-----|-----|------|------|------|------|------|
| 2/0 | 4.4 | 0.0 | 0.0 | 0.0 | 0.0 | 0.0 | .000 | .000 | .000 |

LAST GAME: Did not play

20 • Mary Ashley Stevenson • Fr. • F • 6-2 • New York City, N.Y. • The Dalton School

| GP/GS | MIN. | PPG | RPG | APG | STLS | BLKS | FG% | 3P% | FT% |
|-------|------|-----|-----|-----|------|------|------|------|------|
| 5/4 | 23.9 | 8.0 | 3.8 | 0.8 | 0.4 | 0.6 | .417 | .000 | .833 |

LAST GAME: 11 pts, 3 rebs, 2 asts, 1 stl, 4-11 fg, 3-3 ft, 32 mins

21 • Emily Monson • Fr. • G • 6-1 • Murfreesboro, Tenn. • Blackman

| GP/GS | MIN. | PPG | RPG | APG | STLS | BLKS | FG% | 3P% | FT% |
|-------|------|-----|-----|-----|------|------|------|------|------|
| 3/0 | 2.8 | 1.3 | 0.3 | 0.0 | 0.3 | 0.0 | .500 | .500 | .500 |

LAST GAME: Did not play

23 • Abbey Ellis • 5th • G • 5-6 • Melbourne, Australia • Our Lady of Mercy • Cal Poly

| GP/GS | MIN. | PPG | RPG | APG | STLS | BLKS | FG% | 3P% | FT% |
|-------|------|------|-----|-----|------|------|------|------|------|
| 5/5 | 29.7 | 13.8 | 3.4 | 1.6 | 1.6 | 0.0 | .371 | .192 | .900 |

LAST GAME: 11 pts, 6 rebs, 1 ast, 4-12 fg, 1-4 3pt, 30 mins

31 • Sophie Swanson • Fr. • 5-10 • Barrington, Ill. • Barrington Prep

| GP/GS | MIN. | PPG | RPG | APG | STLS | BLKS | FG% | 3P% | FT% |
|-------|------|-----|-----|-----|------|------|-----|-----|-----|
| - | - | - | - | - | - | - | - | - | - |

LAST GAME: Did not play

32 • Alaina Harper • So. • F • 6-3 • Hartland, Wis. • Arrowhead • Grand Canyon

| GP/GS | MIN. | PPG | RPG | APG | STLS | BLKS | FG% | 3P% | FT% |
|-------|------|-----|-----|-----|------|------|------|------|------|
| 5/0 | 4.2 | 0.0 | 0.4 | 0.0 | 0.0 | 0.0 | .000 | .000 | .000 |

LAST GAME: 1 reb, 11 mins

33 • Madison Layden • Jr. • G • 6-1 • Kokomo, Ind. • Northwestern

| GP/GS | MIN. | PPG | RPG | APG | STLS | BLKS | FG% | 3P% | FT% |
|-------|------|-----|-----|-----|------|------|------|------|------|
| 5/5 | 29.0 | 8.6 | 2.8 | 0.8 | 1.2 | 0.2 | .353 | .391 | .833 |

LAST GAME: 14 pts, 2 rebs, 1 ast, 1 stl, 31 mins

34 • Caitlyn Harper • R-Sr. • F • 6-2 • Hartland, Wisc. • Arrowhead • Cal Baptist

| GP/GS | MIN. | PPG | RPG | APG | STLS | BLKS | FG% | 3P% | FT% |
|-------|------|------|-----|-----|------|------|------|------|-------|
| 5/5 | 33.1 | 10.6 | 5.8 | 0.8 | 1.0 | 0.4 | .525 | .313 | 1.000 |

LAST GAME: 7 pts, 4 rebs, 2 stls, 31 mins

• Will miss the season due to a senior-year injury

• Won 2022 3A Championship with her sister Mila and teammate Rashunda Jones

• No. 43 player by ESPN HoopGuriz

• Ended career ranked second in assists at Washington with 564 and eighth in points with 1,122

• BIG Freshman of the Week - Nov. 20

• 20 pts vs. A&M - First rookie with 20 pts since 2017-18

• No. 79 player in the nation by ESPN HoopGuriz

• 2022 IHSA 3A State Champion with the Reynolds

• Went 95-18 over four years with the Panthers

• Assisted on Amiyah Reynolds' 1,000th career point

• Set season/career highs in every stat last season

• Made game-winning 3 against Wisconsin in BT

• Finished second on the team with 17 blocks last year

• Scored in double digits in nine games and shot 45.5% from the field as a sophomore

• Purdue's 10th Indiana Miss Basketball

• Passed Katie Gearlds for 13th on Purdue's all-time assist chart with 400 dimes

• 2nd Team All-Big Ten, All-Defensive Team in 2022-23

• Her and Caitlin Clark only players nationally with 150 assists and 200 rebounds each of the last two years

• Only Purdue player w/multiple triple-doubles

• Playing with sister Madison for the first time since 2020

• Won two sectional titles, one regional and reached the 2020 IHSA 4A State Championship Game

• Set Northwestern scoring record with 47 points

• Posted a 78-17 record in high school

• Playing with sister Amiyah and former teammate Rashunda Jones after one year apart

• Played at Maryland as a freshman

• No. 60 player, No. 16 forward ESPN HoopGuriz

• Totaled 2,099 career points, second in Panther history behind Skylar Diggins-Smith

• First Purdue freshman with 8 pts, 2 reb, 1 ast, 1 stl, 1 blk in an opener in 2009

• NY Miss Basketball & Gatorade POTY Runner-Up

• Played in the WHO'S NEXT? All-American Games

• Three-time state champion (2 in NY, 1 in SC)

• Naismith High School All-America honorable mention

• Won four regional and three district titles

• Scored more points as a senior than her first three seasons combined (15.8 ppg)

Career Highs:

P -
R -
A -
M -

Career Highs:

P 20, vs. Texas A&M, 11/16/23
R 5, 2 times
A 1, vs. Southern, 11/12/23
M 23, vs. Texas A&M, 11/16/23

Career Highs:

P 16, 3 times
R 7, 3 times
A 4, 2 times
M 30, at Penn State, 1/7/23

Career Highs:

P 28, at Wisconsin, 1/31/21*
R 17, 2 times
A 12, 2 times
M 41, Michigan State, 12/5/22

Career Highs:

P 4, at UCLA, 11/6/23
R 4, vs. Southern, 11/12/23
A 2, vs. Southern, 11/12/23
M 18, vs. Southern, 11/12/23

Career Highs:

P 5, 2 times*
R 3, 2 times*
A 2, at Northwestern, 2/9/23*
M 12, vs. Pitt, 11/27/22*

Career Highs:

P 13, vs. Southern, 11/12/23
R 6, vs. Florida, 11/20/23
A 2, vs. Georgia, 11/22/23
M 32, vs. Georgia, 11/22/23

Career Highs:

P 4, at UCLA, 11/6/23
R 1, vs. Southern, 11/12/23
A -
M 4, at UCLA, 11/6/23

Career Highs:

P 39, at San Diego St, 12/21/20*
R 10, Long Beach State, 3/10/21*
A 11, Western Michigan, 11/14/21*
M 44, Indiana, 1/16/22*

Career Highs:

P -
R -
A -
M -

Career Highs:

P 18, Lindenwood, 11/26/22*
R 8, Columbia, 12/11/22*
A 1, 5 times
M 35, Southern Utah, 3/10/23*

Career Highs:

P 21, vs. Southern, 11/12/23
R 8, 4 times
A 7, Michigan State, 1/31/21
M 44, Indiana, 1/16/22

Career Highs:

P 30, at Utah Valley, 1/15/22
R 14, 3 times
A 5, at UTRGV, 2/13/21
M 41, at Chicago State, 3/2/22

