



**Game 11, 12, 13**  
**Purdue Tournament**  
 December 19-21, 2014  
 (Dee Events Center; 12,000)

Denver Athletics Media Relations  
 SID: Brad Thompson (brad.m.thompson@du.edu)  
 P:(303) 871-4990/C:(440) 897-8400  
 www.DenverPioneers.com

**2014-15 Schedule**

**November**

16	Hawai'i	L, 60-58
21	at Wyoming	L, 82-41
25	COLORADO	L, 77-49
28	SIENA	L, 78-62
29	BELMONT	L, 72-43

**December**

3	CAL STATE FULLERTON	L, 78-61
6	UMKC	W, 74-66
8	AIR FORCE	W, 107-66
11	at Colorado State	L, 81-61
15	at Weber State	L, 65-63
19	vs Wright State @ Purdue	2:30 p.m.
20	vs Purdue @ Purdue	2:30 p.m.
21	vs UC Irvine @ Purdue	Noon
28	at North Texas	1 p.m.

**January**

2	at South Dakota State*	6 p.m.
4	ORAL ROBERTS*	4 p.m.
8	OMAHA*	7 p.m.
11	NORTH DAKOTA STATE*	1 p.m.
15	WESTERN ILLINOIS*	7 p.m.
22	at IUPUI*	4 p.m.
24	at IPFW*	1 p.m.
28	at South Dakota*	6 p.m.

**February**

4	IUPUI*	7 p.m.
7	at Oral Roberts*	4 p.m.
11	SOUTH DAKOTA STATE*	7 p.m.
14	IPFW*	1 p.m.
18	SOUTH DAKOTA*	7 p.m.
21	at Western Illinois*	3:30 p.m.
26	at North Dakota State*	6 p.m.
28	at Omaha	1 p.m.

**March**

7-10	Summit League Tournament%	TBA
------	---------------------------	-----

All Times Mountain and subject to change

\* - Summit League Game

% - in Sioux Falls, S.D.

**DENVER PIONEERS (2-8, 0-0 Summit League)**

Probable Starters	Pos	Ht	Cl	Hometown	P	R	A
10 VAN RIPER-ROSE, Morgan	G	5-10	Sr.	Eden Prairie, Minn.	10.8	3.4	2.3
11 JOHNSTON, Jordan	G	5-10	Sr.	Waterloo, Iowa	6.8	4.0	0.9
15 ESPINOZA, Alecia	F	6-1	So.	Hacienda Heights, Calif.	6.2	5.5	0.6
22 BRADLEY, Paige	G	5-9	Jr.	The Woodlands, Texas	12.5	4.0	3.8
31 SPITTEL, Jesse	F	6-0	So.	Yorba Linda, Calif.	4.9	4.1	0.3

**Head Coach:** Kerry Cremeans (Florida, '94; Kentucky, '04; third season)

**Assistant Coaches:** Seth Kushkin (Wisconsin, '92; third season), Ashley Langford (Tulane, '09; third season), Molly Marrin (Regis University, '03; first season)

**Director of Basketball Operations:** Wes Kitchens (Auburn, '11; third season)



**BASKETBALL**

**Record: 2-8**

**Head Coach:** Kerry Cremeans  
**Conference:** The Summit League



**Record: 1-9**

**Head Coach:** Doug Oliver  
**Conference:** The Big West



**Record: 4-4**

**Head Coach:** Sharon Versyp  
**Conference:** The Big Ten



**Record: 6-2**

**Head Coach:** Mike Bradbury  
**Conference:** Horizon League

**The Games:** The Denver Pioneers will travel to Purdue University to take on Wright State, UC Irvine, and tournament host Purdue Dec 19-21.

**Broadcast:** There will be an audio only broadcast on Pioneer Vision with play-by-play from Brad Thompson

**Live Stats:** [http://www.purduesports.com/gametracker/launch/gt\\_wbaskbl.html?event=1349233&school=pur&sort=wbaskbl&camefrom=&startschool=&](http://www.purduesports.com/gametracker/launch/gt_wbaskbl.html?event=1349233&school=pur&sort=wbaskbl&camefrom=&startschool=&)

**Scouting the Pioneers:** The Pioneers have lit the nets on fire in the last four games. Hitting 43 3-pointers and shooting a combined 43 percent over the last four contests. Denver is shooting 36 percent from the field on the season and 32 percent from behind the arc.

Defensively the Pioneers are pulling in 38 rebounds a game and have grabbed 115 on the offensive glass. Denver is also forcing its opponents into 13 turnovers a game. The Pioneers are 2-2 in their last four and look to grab their third win against Wright State. Coach Cremeans returns to Purdue where she was an assistant from 1997-to-2003.

**Scouting the Raiders:** The Raiders have outscored their opponents 620-to-505 in their eight games. They are shooting 39 percent from the field and 28 percent from behind the arc for the year. Defensively the Raiders are averaging nine steals a game and 48 rebounds.

Leading Wright State is senior guard Tay'ler Mingo who is pouring in 23 points a game and is averaging 5 assists. Senior forward Tayler Stanton is cleaning the glass for the Raiders, pulling down 13 rebounds a game.

**Scouting the Boilermakers:** The Boilermakers are led by senior forward Whitney Bays who is averaging a double-double, with 14 points and 11 rebounds a game. Purdue has two more players who average double figures in points. Sophomore Ashley Morrisette and junior April Wilson each average 11 points a game.

After Thursday's win over Kansas, senior Liza Clemons earned a spot on the Boilermakers' all-time field goal percentage career leaders list. Converting 52.3 percent of her shots for her career, Clemons is seventh all-time at Purdue, one spot behind current assistant coach Lindsay Wisdom-Hylton.

**Scouting the Anteaters:** The Anteaters have scored an average of 58 points a game over the first ten contests this season. Irvine has been hitting at a 34 percent clip from the field this season and 20 percent from three. The Anteaters are led by sophomore forward Mokun Fajemisin who is scoring 12 points and pulling in seven rebounds a game.

Defensively Irvine pulls down 42 rebounds and seven steals a game. Irvine has been outscored 748-to-577 through ten games.

## GENERAL INFORMATION

Location .....	Denver, Colo.
Enrollment .....	11,656
Founded .....	1864
Nickname .....	Pioneers
Colors .....	Crimson and Gold
National Affiliation .....	NCAA Division I
Conference .....	The Summit League
Chancellor .....	Rebecca Chopp
Alma Mater .....	Kansas Wesleyan '74
Alma Mater .....	University of Chicago
Athletics Director .....	Peg Bradley-Doppes
Alma Mater .....	Mount St. Joseph (Ohio) '79
Alma Mater .....	Miami (Ohio) '81
Athletics Department Phone .....	(303) 871-2275
Ticket Office Phone .....	(303) 871-2336

## TEAM INFORMATION

Arena .....	Magness Arena
Capacity .....	7,200
Press Box Phone .....	(303) 871-3922
2013-14 Overall Record .....	9-23
2013-14 The Summit League Record .....	5-9
2013-14 The Summit League Finish .....	6th
Letterwinners Returning/Lost .....	7/5
Starters Returning/Lost .....	3/2
Newcomers .....	5

## COACHING STAFF

Head Coach .....	Kerry Cremeans
Alma Mater .....	Florida '94
Alma Mater .....	Kentucky '04
Record at DU .....	23-40 (2)
Career .....	23-40 (2)
Best way to reach coach .....	through SID
Assistant Coach .....	Seth Kushkin
Alma Mater .....	Wisconsin '92
Assistant Coach .....	Ashley Langford
Alma Mater .....	Tulane '09
Assistant Coach .....	Molly Marrin
Alma Mater .....	Regis '03
Director of Basketball Ops .....	Wes Kitchens
Alma Mater .....	Auburn '11
Phone .....	(303) 871-4793
Assistant Athletic Trainer .....	Katie Forsyth
Team Doctor .....	Dr. Girish Paranjape
Strength and Conditioning Coach .....	Kathryn Whartenby
Sport Program Assistant .....	Katie Robertson
Phone .....	(303)-871-3397

## TEAM HISTORY

First Year of Women's Basketball .....	1974-75
Overall all-time record .....	615-478 (.569)
NCAA Tournament/Last .....	1/2001
..... L, 77-57, Virginia Tech (3/16/01)	
WNIT/Last .....	1/2011
..... L, 75-60, at BYU (3/17/11)	

## MEDIA RELATIONS

Director of Media Relations (WBB Contact) .....	Brad Thompson
Office Phone .....	(303) 871-4990
Cell Phone .....	(440)-897-8400
Fax .....	(303) 871-3890
Email .....	Brad.M.Thompson@du.edu
Associate Dir .....	Charlie Newton
Associate Dir .....	Lea Gralewski
Web site .....	www.DenverPioneers.com
Twitter ID .....	DU_Pioneers
WBB Twitter ID .....	DU_WHoops
Facebook .....	Denver Pioneers
WBB Facebook .....	DU Women's Basketball
Mailing/Overnight Address .....	2201 E. Asbury Ave.
.....	Denver, CO. 80208

## THE SERIES

This is the third meeting between Weber State and Denver. The last meeting was over ten years ago in 2000 when Denver beat the Wildcats 49-43 in Denver. The Pioneers lead the series 2-1.

## TICKETS

Season tickets are currently on sale for the 2014-15 women's basketball season. For ticket information visit [DenverPioneers.com/tickets](http://DenverPioneers.com/tickets) or call the Pioneer Basketball Ticket Hotline at (303) 871-HOOP.

## BROADCAST

There will be an audio only broadcast on Pioneer Vision with play-by-play from Brad Thompson <http://www.denverpioneers.com/collegesportslive/?media=470904>.

## MEDIA/LIVE STATS

Live Stats will be available at <http://www.statbroadcast.com/events/statbroadcast.php?t=1&gid=weber>. Live in-game tweeting will be available at [www.Twitter.com/DU\\_WHoops](http://www.Twitter.com/DU_WHoops) and fans can join in the conversation by using #DUGameDay.

## LAST TIME OUT

The University of Denver women's basketball team couldn't come up with a basket on their final possession and lost a heartbreaker at Weber State on Monday afternoon. Weber State (5-5) outlasted Denver (2-8) 65-63.

Down 65-63, Denver had a chance to tie or take the lead in the final 7.4 seconds. Morgan Van Riper-Rose (Eden Prairie, Minn.) put up a contested 3-pointer at the buzzer that fell short.

Weber State's Zakiyyah Shahid-Martin's layup with 7.4 seconds remaining broke a 63-63 deadlock and gave the Wildcats the lead for good. With the game tied at 63, the Pioneers had possession when Paige Bradley (The Woodlands, Texas) had the ball knocked away by Regina Okoye. Bradley was injured on the play and the Wildcats, who then had a five-on-four advantage at the other end of the court, were able to convert with Shahid-Martin making the layup.

Bradley poured in a game-high 19 points, including 3-for-3 from behind the 3-point arc, to go along with seven assists and three rebounds. Van Riper-Rose continued to shoot the ball well for Denver. She finished with 16 points, on 4-of-8 shooting from 3-point range. Jordan Johnston (Waterloo, Iowa) was the third Pioneer to score in double figures with 10 points and grabbed four rebounds. Alecia Espinoza (Hacienda Heights, Calif.) chipped in eight points and collected a team-high seven rebounds. Jacqlyn Poss (Shoreview, Minn.) had eight points off the bench for Denver.

Denver took the lead from the opening possession as Van Riper-Rose nailed a 3-pointer just nine seconds into the game. The Pioneers torched the nets from beyond the 3-point line in the first half shooting 8-of-11. Van Riper-Rose and Bradley each knocked down a trio of 3-pointers in the first half, while Johnston netted a pair of 3-pointers in the first half, giving Denver a 41-28 halftime advantage.

Weber State went on a 11-0 run during a 3:04 stretch early on in the second half to cut the Pioneers lead to four. Denver went on their own 6-0 run to push the lead back to 10, but the Wildcats defensive pressure and physical play eventually would wear down the Pioneers in the second half. Weber State took their first lead of the game 63-62 when Jalen Carpenter put in a layup with 2:42 left on the clock.

The Pioneers held the rebounding advantage in the first half 20-13, but Weber State outrebounded Denver 26-9 in the second half.

For the game the Pioneers shot 42 percent (22-53) from the field, 60 percent (9-15) from 3-point range and 71 percent (10-14) from the free throw line. Weber State shot 40 percent (23-57) from the field, nine percent (1-11) from 3-point range and 86 percent (18-21) from the free throw line.

## SCOUTING THE RAIDERS

The Raiders have out scored their opponents 620-to-505 in their eight games. They are shooting 39 percent from the field and 28 percent from behind the arc for the year. Defensively the Raiders are averaging nine steals a game and 48 rebounds.

Leading Wright State is senior guard Tay'ler Mingo who is pouring in 23 points a game and is averaging 5 assists. Senior forward Tayler Stanton is cleaning the glass for the Raiders, pulling down 13 rebounds a game.

## SCOUTING THE BOILERMAKERS

The Boilermakers are led by senior forward Whitney Bays who is averaging a double-double, with 14 points and 11 rebounds a game. Purdue has two more players who average double figures in points. Sophomore Ashley Morrisette and junior April Wilson each average 11 points a game.

After Thursday's win over Kansas, senior Liza Clemons earned a spot on the Boilermakers' all-time field goal percentage career leaders list. Converting 52.3 percent of her shots for her career, Clemons is seventh all-time at Purdue, one spot behind current assistant coach Lindsay Wisdom-Hylton.

## SCOUTING THE ANTEATERS

The Anteaters have scored an average of 58 points a game over the first ten contests this season. Irvine has been hitting at a 34 percent clip from the field this season and 20 percent from three. The Anteaters are led by sophomore forward Mokun Fajemisin who is scoring 12 points and pulling in seven rebounds a game.

Defensively Irvine pulls down 42 rebounds and seven steals a game. Irvine has been outscored 748-to-577 through ten games.

## QUEST FOR 1,000

In fitting fashion Denver senior guard Morgan Van Riper-Rose (Eden Prairie, Minn.) surpassed 1,000 career points when she drained a three-pointer at the 13:29 mark of the second half against Belmont on Nov. 29. Van Riper-Rose is currently in 19th place on Denver's all-time scoring list with 1,087 career points. She passed Sara Benham to move into 19th place on the scoring list.

## RAINING RECORDS

On Dec. 8 the Pioneers exploded for 107 points against Air Force. That scored tied for second most points in school history. Leading the team was senior Morgan Van Riper-Rose (Eden Prairie, Minn.) who caught fire for 10 3-point baskets. The senior sharpshooter set a new school and league record for most 3-point baskets in a single game. The number also tied for 3rd most made 3-pointers in a game by a single player in NCAA Division I women's basketball history. The team finished with 19, which also was a school and league single game record. That number also ranks in the NCAA single game Division I women's basketball records, tying a few other teams for 4th most.

## THE RETURN OF SPITTEL

Sophomore forward Jesse Spittel (Yorba Linda, Calif.) led the Pioneers with 10 points and eight rebounds on Nov. 21 in her first game back since missing most of the 2013-14 season due to an injury.

## FRESH FUTURE

With five freshman on the roster this season the young Pioneers will look to contribute in a major role. Guard Ciera Morgan (Parker, Colo.) was picked by College Sports Madness as the preseason Freshman of the Year. Forward Jordan Alt (North Oaks, Minn.) was a 1,000 point scorer her junior season. Guard Tamara Lee (Edmond, Okla.) was a participant of the USA 16 and under National Team. All of the incoming freshman have a bright future for the Pioneers and will look to have major contributions as the season moves forward.

## ACADEMIC RECOGNITION

The Pioneers have finished in the top-25 for academics seven times since turning DI at the start of the 1999-00 season.

## PRESEASON ALL-SUMMIT LEAGUE SELECTIONS

University of Denver junior point guard Paige Bradley (The Woodlands, Texas) was selected to The Summit League Second Team. Last season, Bradley was selected to The Summit League All-Tournament Team and was named All-Summit Honorable Mention. In her first year as the starting point guard Bradley averaged 12.5 points per game and ranked third in The Summit League in assists (4.9) and three-point shooting percentage (40.7) last season.

## PIONEERS PICKED TO FINISH FIFTH

Denver was picked to finish fifth out of nine teams in The Summit League's preseason poll, finishing behind South Dakota State, South Dakota, IUPUI and Western Illinois. Last year's regular season champion, South Dakota State, is the favorite to win The Summit League title this season. Western Illinois' Ashley Luke was tabbed as the Preseason Player of the Year.

## ALT(ERING) THE GAMEPLAN

Freshman forward Jordan Alt made a big statement that she was going to clean the glass for the Pioneers this season. She reeled in six boards in the first half of the match-up against Hawai'i on Nov. 16 including two on the offensive glass. She added another four in the second half to finish with ten. Alt reeled in another 6 rebounds on Nov. 25. Alt earned her first career

## HEAD COACH KERRY CREMEANS



### kerry CREMEANS

Head Coach • Third Season  
Wheelersburg, Ohio  
Florida (1994), Kentucky (2004)

Former Auburn University Associate Head Coach Kerry Cremeans (krah-MEANS) was named Head Coach of the University of Denver women's basketball team in April of 2012

Cremeans became the ninth head coach in DU women's basketball history since the program's inception in 1974. Cremeans spent eight seasons at Auburn, including the last two as the program's associate head coach, helping the Tigers to an SEC Championship in 2009. Cremeans is widely regarded as one of the top recruiters in the country.

In her first season with the Pioneers, Cremeans helped the Denver to a 14-17 record, including an 8-10 mark in WAC play. Denver recorded its first ever road-win over a BCS Conference school when it defeated Oregon 73-62 on Dec. 2. Denver finished in the top 100 nationally in scoring offense, rebounding margin, assists per-game and assist-turnover ratio. In her second season at Denver, the Pioneers entered the Summit League tournament as the seventh seed but advanced to the Championship where they lost to third seeded South Dakota.

Cremeans arrived at Denver with more than 18 years of coaching experience. A 1994 graduate of Florida and four-year basketball letterwinner, Cremeans served on the coaching staff of her alma mater in 2003-04 after spending seven years as the top recruiter at Purdue under legendary head coach Nell Fortner.

During her time at Purdue, Cremeans helped the Boilermakers to an impressive 181-49 record and seven consecutive NCAA Tournament berths. During the 1999 season, Cremeans played an instrumental role in leading Purdue to an unprecedented 34-1 record and an NCAA title. In seven seasons at Purdue, Cremeans helped lead the Boilermakers to four Big Ten Tournament titles (1998, 1999, 2000 and 2003) and three regular season conference titles (1999, 2001 and 2002).

During her time at Florida, Cremeans aided in the resurgence of the then-struggling Gator program, leading them to a 19-11 overall record in 2003-04, a 10-win improvement over the previous season.

Cremeans started her coaching career in 1994 as an assistant women's basketball coach at Kentucky. From 1994-96, Cremeans coordinated travel, served as the liaison to the Center for Academic Development, scouted opponents and served as the film exchange coordinator for the Wildcats.

Cremeans earned her degree in exercise science from Florida in 1994 and her master's in sport management from Kentucky in 2004. A GTE Academic All-American, she helped lead the Gators to consecutive NCAA Tournament appearances, the first two in the school's history. She concluded her career at Florida as the all-time leader in three-pointers made.

### THE CREMEANS FILE

#### Coaching Experience

2012-Present - University of Denver, Head Coach  
2010-12 - Auburn University, Associate Head Coach  
2004-10 - Auburn University, Assistant Coach  
Southeastern Conference championship (2009)  
Two NCAA Tournament Appearances (2008, 2009)  
Two WNIT Appearances (2007, 2011)  
2003-04 - University of Florida, Assistant Coach  
NCAA Tournament Second Round (2004)  
1996-03 - Purdue University, Assistant Coach  
NCAA Champions with 34-1 Record (1999)  
Seven NCAA Tournament Appearances (1997-03)  
Four Big Ten Championships (1997, 1999, 2001, 2002)  
1994-96 - University of Kentucky, Assistant Coach

#### Playing Experience

1990-94 - University of Florida  
NCAA Tournament Appearances (1993, 1994)  
GTE Academic All-American (1994)  
SEC Academic Honor Roll (1992, 1993, 1994)  
Graduated with Florida's all-time three-pointer record

#### Education

Florida (1994) - Bachelor's in Exercise Science  
Kentucky (2004) - Master's in Sport Management

#### Personal

Born: August 9, 1972  
Hometown: Wheelersburg, Ohio



---

---

double-double on Dec. 6, recording 10 rebounds and 15 points. Currently she ranks first on the team with 37 rebounds on the season. Alt recorded her first career double-double against UMKC on Dec. 6 when she scored 15 points and grabbed 10 rebounds. Alt at 6-2 has been a force on the boards for DU this season.

## **THE TEAM**

Denver welcomes back three seniors to lead a predominately underclassmen squad. Leading rebounder Theresa Wirth (Mesa, Ariz.) averaged 10.8 points per contest and 6.8 rebounds last season. Sharpshooter Morgan Van Riper-Rose (Eden Prairie, Minn.) led the team in free throw percentage (89.2) and shot 34.7 percent from beyond the arch. Jordan Johnston (Waterloo, Iowa) came off the bench last year and provided a spark offensively averaging 6.1 points per game, while shooting 32.3 percent from the three-point line.

Summit League All-Tournament Team selection Paige Bradley (The Woodlands, Texas) is the only returning junior this season. Bradley tallied 12.6 points per game last year and ranked third in The Summit League in assists (4.9) and three-point shooting percentage (40.7).

Sophomores Alecia Espinoza (Hacienda Heights, Calif.), Jesse Spittel (Yorba Linda, Calif.), Jacqlyn Poss (Shoreview, Minn.) and redshirt freshman Tori Bryant (Brea, Calif.) will see more playing time and take on bigger roles this season.

Freshmen Tamara Lee (Edmond, Okla.), Jordyn Alt (North Oaks, Minn.), Avery Queen (Boerne, Texas), Kaila Burroughs (St. Cloud, Minn.) and Ciera Morgan (Parker, Colo.) all will compete for playing time.

## **CREMEANS AND CO. ADD THREE FUTURE PIONEERS**

Head Coach Kerry Cremeans and the University of Denver women's basketball program added three players to the 2015-16 team with the signing of forward Maya Rodgers (Meridian, Idaho), guard Sam Romanowski (Mountlake Terrace, Wash.) and guard Haley Simental (Pueblo West, Colo.) last week.

### **Maya Rodgers**

Maya Rodgers is a 5'11" small forward from Rocky Mountain High School in Meridian, Idaho. She was a three-sport athlete for the majority of her high school career. She participated in basketball, football, as well as track and field. For her senior year she is concentrating on just basketball. As a basketball player she was named Second Team All-Conference her sophomore and junior seasons. She also led her team in shooting percentage and blocked shots.

When asked why she chose Denver Rodgers said, "I chose the University of Denver because I truly believed that the coaches cared, not only about the players, but about their futures as well. I also loved the beautiful architecture and environment of the city and the campus. I loved how the players' were so focused on improving everyday in the classroom and on the court and the goal is to succeed. This is what I have been looking for in a basketball program."

### **Sam Romanowski**

Romanowski comes in as one of the best from the state of Washington. She's a 5'9" guard from Mountlake Terrace High School in Mountlake Terrace, Wash. She was named First Team All-State for the 2013-14 season, along with being the WESCO 3A Co-Player of the Year last season.

On why she chose Denver Romanowski said, "I chose the University of Denver because I fell in love with the campus when I visited. The basketball team was very welcoming and it was like one big family. I know the coaches know what they're doing and they love doing what they do. What the team stands for is perfect and I just love everything about the University of Denver."

Here's what Coach Cremeans had to say about Sam.

### **Haley Simental**

Haley Simental is a Colorado product and comes in with a diverse skill set. She's a 5'8" guard that plays for Pueblo West High School in Pueblo West, Colo. She was named to the All-State Second Team the past two seasons and averaged 18 points per game during the 2013-14 season. She has also been named First Team South-Central League.

When asked why she chose DU Simental said, "I chose DU for the coaching staff, the location, the education, and for this basketball program." She's a member of the National Honor Society and volunteers with the Paws For Life organization.

## **PIONEERS SOCIAL NETWORKING**

Fans can follow the DU Pioneers on Twitter, Facebook, Instagram and YouTube to get the latest news, scores, event updates, video highlights and more. Become a fan of the Denver Pioneers on Facebook to get the latest news and information about the. Interact with your fellow Pioneer fans and be a part of the ever-growing Crimson and Gold community online. (Facebook Fan Page: DenverPioneers; DUWomensBasketball)

Get up-to-the-minute news, scores and information from the DU Athletic Department and the Pioneer women's basketball team by following them on Twitter. Simply set up an account and start following today (Twitter ID: DU\_Pioneers; DU\_WHoops). Share your favorite photos of the Pioneers or view our digital scrapbook via Instagram by following @DU\_Pioneers and/or @DU\_WHoops. The DU Pioneers are also on YouTube. Check out the Pioneer page to see highlight videos, interviews and more. (YouTube: DenverAthletics; DenverWomensHoops)

## WEEKLY NEWS

Dec. 8, 2014

### Denver Has Record-Setting Night, Drops Air Force 107-66

The University of Denver women's basketball team had a night for the record books against the Air Force Academy Falcons on Monday at Magness Arena. Denver (2-6) outscored Air Force (1-8), 107-66 while setting a new school record with 19 made 3-point field goals. Historically, 19 3-pointers ties for 4th most made 3-point field goals in a single game in NCAA Division I women's basketball history.

Denver torched the nets at Magness Arena scoring 107 points, which is a tie for the second most points in school history and the most since 1991. The Pioneers also breached the century mark for the first time since putting up 101 against Utah Valley State on January 8, 2008.

The Pioneers took the lead at the start, but the Falcons kept Denver close until a pair of 3-point baskets by senior Morgan Van Riper-Rose (Eden Prairie, Minn.). She also set a career-high making an unprecedented and Denver woman's basketball program record 10 3-point baskets. Her 10 ties for 3rd most made 3-pointers in a game by a single player in NCAA Division I women's basketball history. Van Riper-Rose jumped two spots and moved into 19th place on Denver's all-time scoring list with 1,060 points. She finished the night with a career-high 32 points to go along with seven rebounds and four assists.

Denver kept raining in the shots in the second half, after netting 8 3-pointers in the first half, the Pioneers nailed another 11 3-pointers for a school record 19. Denver shot 53 percent from behind the arc for the game. The Pioneers held their largest lead of the season (43) after the 19th 3-pointer made by freshman Tamara Lee (Edmond, Okla.) who finished with a career-high 10 points.

Junior Paige Bradley (The Woodlands, Texas) had another solid game all-around with a season best 19 points while grabbing seven rebounds and dishing out eight assists. Freshman Ciera Morgan (Parker, Colo.) set a career-high with nine assists and scored five points off the bench.

Denver shared the ball well with a season-high 26 assists. The Pioneers shot a season-high 50 percent from the field and made a season-high 38 field goals. Denver dominated the Falcons on the glass snatching 57 rebounds to Air Force's 26.

The tandem of sophomore Alecia Espinoza (Hacienda Heights, Calif.) and freshman Jordyn Alt (North Oaks, Minn.) cleaned the glass again bringing in 12 and 14 rebounds, respectively. Espinoza tied her career-high with 12 rebounds and with her 10 points recorded her first career double-double. Alt's 14 rebounds set a new career-high.

The Falcons were led by senior Jimi Blagowsky and freshman Cortney Porter. Blagowsky had 19 points, three rebounds and three assists. Porter scored 19 points and reeled in four rebounds.

## STATISTICAL COMPARISON

Denver	Category
61.9	Points per Game
72.5	Opponent Points per Game
.364	Field Goal Percentage
.405	Opponent Field Goal Percentage
.324	Three-Point Field Goal Percentage
.331	Opponent Three-Point Field Goal Percentage
7.1	Three-Point Field Goals per Game
6.7	Opponent Three-Point Field Goals per Game
.700	Free Throw Percentage
-5.8	Rebound Margin
3.0	Blocks per Game
5.1	Steals per Game
12.3	Assists per Game
16.1	Turnovers per Game
19.2	Fouls per Game

## DENVER RECORD BY STARTING LINEUP

Van Riper Rose, Bradley, Johnston, Espinoza, Bryant	0-1
Van Riper Rose, Bradley, Johnston, Espinoza, Spittel	2-7

## 2014-15 SPECIALTY STATS COMPARISON (Denver/Opponents)

Opponent	Paint	Off TO	2nd Chance	Fast Break	Bench
Hawai'i	8/24	12/17	6/14	6/2	14/12
at Wyoming	24/44	4/20	12/17	0/8	21/26
Colorado	24/30	12/17	8/16	4/0	14/17
Siena	14/38	15/13	12/12	0/0	24/19
Belmont	8/30	6/14	3/23	0/0	22/26
Cal State Fullerton	24/24	12/8	5/7	7/4	5/14
UMKC	24/28	13/18	19/11	4/0	34/24
Air Force	28/22	17/8	17/7	8/0	37/26
at Colorado State	18/40	10/24	8/10	8/2	22/17
at Weber State	14/38	16/15	6/10	0/2	8/22
vs Wright State					
at Purdue					
vs UC Irvine					
at North Texas					
at South Dakota State					
Oral Roberts					
Omaha					
North Dakota State					
Western Illinois					
at IUPUI					
at IPFW					
at South Dakota					
IUPUI					
South Dakota State					
IPFW					
South Dakota					
at Western Illinois					
at North Dakota State					
at Omaha					
TOTALS	186/318	117/154	96/127	37/18	201/203

## ROSTER FACTS

### NUMERICAL ROSTER

No.	Name	Pos.	Ht.	Yr.	Hometown (Previous School)
10	Morgan Van Riper-Rose	Guard	5-10	SR	Eden Prairie, Minn. (Eden Prairie H.S.)
11	Jordan Johnston	Guard	5-10	SR	Waterloo, Iowa (Waterloo West H.S.)
12	Jacqlyn Poss	Guard	5-9	SO	Shoreview, Minn. (Roseville Area H.S.)
15	Alecia Espinoza	Forward	6-1	SO	Hacienda Heights, Calif. (Troy Tech H.S.)
20	Ciera Morgan	Guard	5-9	FR	Parker, Colorado (Highlands Ranch H.S.)
22	Paige Bradley	Guard	5-9	JR	The Woodlands, Texas (The Woodlands H.S.)
23	Kaila Burroughs	Guard	6-1	FR	St. Cloud, Minnesota (St. Cloud Technical H.S.)
24	Tamara Lee	Guard	5-8	FR	Edmond, Oklahoma (Edmond Santa Fe H.S.)
31	Jesse Spittel	Forward	6-2	SO	Yorba Linda, Calif. (Orange Lutheran H.S.)
32	Tori Bryant	Forward	6-0	RS FR	Brea, Calif. (Brea Olinda H.S.)
34	Theresa Wirth	Forward	6-0	SR	Mesa, Ariz. (Seton Catholic Prep)
40	Avery Queen	Forward	6-2	FR	Boerne, Texas (Boerne H.S.)
45	Jordyn Alt	Forward	6-2	FR	North Oaks, Minnesota (Cretin-Derham Hall H.S.)

### ALPHABETICAL ROSTER

No.	Name	Pos.	Ht.	Yr.	Hometown (Previous School)
45	Jordyn Alt	Forward	6-2	FR	North Oaks, Minnesota (Cretin-Derham Hall H.S.)
22	Paige Bradley	Guard	5-9	JR	The Woodlands, Texas (The Woodlands H.S.)
32	Tori Bryant	Forward	6-0	RS FR	Biology Brea, Calif. (Brea Olinda H.S.)
23	Kaila Burroughs	Guard	6-1	FR	St. Cloud, Minnesota (St. Cloud Technical H.S.)
15	Alecia Espinoza	Forward	6-1	SO	Hacienda Heights, Calif. (Troy Tech H.S.)
11	Jordan Johnston	Guard	5-10	SR	Waterloo, Iowa (Waterloo West H.S.)
24	Tamara Lee	Guard	5-8	FR	Edmond, Oklahoma (Edmond Santa Fe H.S.)
20	Ciera Morgan	Guard	5-9	FR	Parker, Colorado (Highlands Ranch H.S.)
12	Jacqlyn Poss	Guard	5-9	SO	Shoreview, Minn. (Roseville Area H.S.)
40	Avery Queen	Forward	6-2	FR	Boerne, Texas (Boerne H.S.)
31	Jesse Spittel	Forward	6-2	SO	Yorba Linda, Calif. (Orange Lutheran H.S.)
10	Morgan Van Riper-Rose	Guard	5-10	SR	Eden Prairie, Minn. (Eden Prairie H.S.)
34	Theresa Wirth	Forward	6-0	SR	Mesa, Ariz. (Seton Catholic Prep)

### COACHING STAFF

**Head Coach:** Kerry Cremeans (Florida, '94, Kentucky, '04; third season)

**Assistant Coach:** Seth Kushkin (Wisconsin-Madison, '92; third season)

**Assistant Coach:** Ashley Langford (Tulane, '09; third season)

**Assistant Coach:** Molly Marrin (Regis '03; first season)

**Director of Operations:** Wesley Kitchens (Auburn, '11; third season)

**Athletic Trainer:** Katie Forsyth (Michigan State, '09, Oregon, '12; third season)

**Basketball SID:** Brad Thompson (Mercyhurst, '03, Northwestern '10; first season)



# BASKETBALL

### PRONUNCIATION GUIDE

	FIRST NAME	LAST NAME
<b>Kaila Burroughs</b>	KAY-lah	
<b>Kerry Cremeans</b>		krah-MEANS
<b>Alecia Espinoza</b>	Ah-LEASE-E-Ah	
<b>Tamara Lee</b>	Tah-MAR-ah	
<b>Ciera Morgan</b>	SEE-era	
<b>Jacqlyn Poss</b>	Jack-lynn	paw-SS
<b>Jesse Spittel</b>		Spit-TELL
<b>Morgan Van Riper-Rose</b>		RYE-per
<b>Theresa Wirth</b>		WORTH

### BY ELIGIBILITY

**Seniors** (3) - Van Riper-Rose, Johnston, Wirth

**Juniors** (1) - Bradley

**Sophomores** (4) - Bryant, Espinoza, Poss, Spittel

**Freshman** (5) - Alt, Lee, Burroughs, Queen, Morgan

### BY POSITION

**Forward** (6) - Bryant, Espinoza, Spittel, Wirth, Alt, Queen

**Guard** (7) - Bradley, Johnston, Poss, Van Riper-Rose, Lee, Burroughs, Morgan

### BY HEIGHT

5-8 (1) - Lee

5-9 (3) - Bradley, Poss, Morgan

5-10 (2) - Johnston, Van Riper-Rose

6-0 (2) - Bryant, Wirth

6-1 (2) - Espinoza, Burroughs

6-2 (3) - Spittel, Queen, Alt

### BY STATE

Arizona (1) - Wirth

California (3) - Bryant, Espinoza, Spittel

Colorado (1) - Morgan

Iowa (1) - Johnston

Minnesota (4) - Poss, Van Riper-Rose, Burroughs, Alt

Oklahoma (1) - Lee

Texas (2) - Bradley, Queen

## 2014-15 CUMULATIVE STATISTICS

### Denver Women's Basketball DEN Combined Team Statistics (as of Dec 17, 2014) All games

RECORD:	OVERALL	HOME	AWAY	NEUTRAL
ALL GAMES	2-8	2-5	0-3	0-0
CONFERENCE	0-0	0-0	0-0	0-0
NON-CONFERENCE	2-8	2-5	0-3	0-0

#	Player	gp-gs	min	avg	Total		3-Point		F-Throw		Rebounds				pf	dq	a	to	blk	stl	pts	avg
					fg-fga	fg%	3fg-fga	3fg%	ft-fa	ft%	off	def	tot	avg								
22	Bradley, Paige	10-10	289	28.9	39-104	.375	16-42	.381	31-46	.674	8	32	40	4.0	20	1	38	25	1	10	125	12.5
10	Van Riper-Rose, Morg	10-10	302	30.2	39-103	.379	25-70	.357	5-9	.556	1	33	34	3.4	10	0	23	16	2	10	108	10.8
12	Poss, Jacqlyn	10-0	186	18.6	29-67	.433	9-33	.273	4-6	.667	5	11	16	1.6	17	0	16	17	0	4	71	7.1
11	Johnston, Jordan	10-10	240	24.0	22-80	.275	9-36	.250	15-19	.789	11	29	40	4.0	11	0	9	18	7	5	68	6.8
15	Espinoza, Alecia	10-10	217	21.7	26-50	.520	2-5	.400	8-13	.615	19	36	55	5.5	29	3	6	29	3	7	62	6.2
31	Spittel, Jesse	9-9	178	19.8	13-37	.351	0-0	.000	18-26	.692	20	17	37	4.1	21	1	3	11	3	2	44	4.9
23	Burroughs, Kaila	8-0	95	11.9	10-35	.286	4-12	.333	10-13	.769	2	12	14	1.8	10	0	1	4	2	5	34	4.3
24	Lee, Tamara	8-0	65	8.1	9-25	.360	6-16	.375	6-9	.667	1	7	8	1.0	9	1	3	6	1	4	30	3.8
45	Alt, Jordyn	10-0	161	16.1	11-37	.297	0-4	.000	13-20	.650	21	35	56	5.6	28	0	5	20	2	2	35	3.5
20	Morgan, Ciera	9-0	119	13.2	5-17	.294	0-1	.000	14-16	.875	4	15	19	2.1	16	1	16	10	3	1	24	2.7
40	Queen, Avery	10-0	109	10.9	6-13	.462	0-0	.000	2-2	1.000	8	14	22	2.2	15	0	2	3	3	1	14	1.4
32	Bryant, Tori	8-1	39	4.9	2-11	.182	0-0	.000	0-1	.000	2	4	6	0.8	6	0	1	1	3	0	4	0.5
Team											13	15	28					1				
Total.....		10	2000		211-579	.364	71-219	.324	126-180	.700	115	260	375	37.5	192	7	123	161	30	51	619	61.9
Opponents.....		10	2000		256-632	.405	57-172	.331	156-208	.750	147	286	433	43.3	183	-	157	131	31	73	725	72.5

TEAM STATISTICS	DEN	OPP	Date	Opponent	Score	Att.
SCORING	619	725	11/16/14	HAWAII	L 58-60	479
Points per game	61.9	72.5	11/21/14	at Wyoming Cowgirls	L 41-82	4081
Scoring margin	-10.6	-	11/25/14	COLO	L 49-77	674
FIELD GOALS-ATT	211-579	256-632	11/28/14	SIEW	L 62-78	514
Field goal pct	.364	.405	11/29/14	BEL	L 43-72	451
3 POINT FG-ATT	71-219	57-172	12/3/14	CSF	L 61-78	209
3-point FG pct	.324	.331	12/6/14	UMKC	w 74-66	629
3-pt FG made per game	7.1	5.7	12/8/14	AF	w 107-66	242
FREE THROWS-ATT	126-180	156-208	12/11/14	at Colorado State	L 61-81	1107
Free throw pct	.700	.750	12/15/14	at Weber State	L 63-65	3100
F-Throws made per game	12.6	15.6	* - Conference game			
REBOUNDS	375	433				
Rebounds per game	37.5	43.3				
Rebounding margin	-5.8	-				
ASSISTS	123	157				
Assists per game	12.3	15.7				
TURNOVERS	161	131				
Turnovers per game	16.1	13.1				
Turnover margin	-3.0	-				
Assist/turnover ratio	0.8	1.2				
STEALS	51	73				
Steals per game	5.1	7.3				
BLOCKS	30	31				
Blocks per game	3.0	3.1				
ATTENDANCE	3198	8288				
Home games-Avg/Game	7-457	3-2763				
Neutral site-Avg/Game	-	0-0				

Score by Periods	1st	2nd	Totals
DEN	295	324	619
Opponents	335	390	725

**Denver Women's Basketball**  
**DEN Team High/Low Analysis (as of Dec 17, 2014)**  
**All games**

**DEN - TEAM GAME HIGHS**

<b>POINTS</b>	<b>107</b>	<b>AF (12/8/14)</b>
	74	UMKC (12/6/14)
	<b>63</b>	<b>at Weber State (12/15/14)</b>
	62	SIEW (11/28/14)
	<b>61</b>	<b>at Colorado State (12/11/14)</b>
	61	CSF (12/3/14)
<b>FIELD GOALS MADE</b>	<b>38</b>	<b>AF (12/8/14)</b>
	25	UMKC (12/6/14)
<b>FIELD GOAL ATTEMPTS</b>	<b>76</b>	<b>AF (12/8/14)</b>
	64	COLO (11/25/14)
<b>FIELD GOAL PERCENTAGE</b>	<b>.500 (38-76)</b>	<b>AF (12/8/14)</b>
	.415 (22-53)	at Weber State (12/15/14)
<b>3 PT FIELD GOALS MADE</b>	<b>19</b>	<b>AF (12/8/14)</b>
	9	at Weber State (12/15/14)
	<b>9</b>	<b>SIEW (11/28/14)</b>
<b>3 PT FG ATTEMPTS</b>	<b>36</b>	<b>AF (12/8/14)</b>
	<b>27</b>	<b>COLO (11/25/14)</b>
<b>3 PT FG PERCENTAGE</b>	<b>.600 (9-15)</b>	<b>at Weber State (12/15/14)</b>
	<b>.528 (19-36)</b>	<b>AF (12/8/14)</b>
<b>FREE THROWS MADE</b>	<b>18</b>	<b>HAWAII (11/16/14)</b>
	<b>17</b>	<b>UMKC (12/6/14)</b>
	17	CSF (12/3/14)
<b>FREE THROW ATTEMPTS</b>	<b>24</b>	<b>CSF (12/3/14)</b>
	23	HAWAII (11/16/14)
<b>FREE THROW PERCENTAGE</b>	<b>.889 (8-9)</b>	<b>at Wyoming Cowgirls (11/21/14)</b>
	.813 (13-16)	SIEW (11/28/14)
<b>REBOUNDS</b>	<b>57</b>	<b>AF (12/8/14)</b>
	44	UMKC (12/6/14)
<b>ASSISTS</b>	<b>26</b>	<b>AF (12/8/14)</b>
	17	UMKC (12/6/14)
<b>STEALS</b>	<b>11</b>	<b>COLO (11/25/14)</b>
	6	at Weber State (12/15/14)
	<b>6</b>	<b>HAWAII (11/16/14)</b>
<b>BLOCKED SHOTS</b>	<b>6</b>	<b>BEL (11/29/14)</b>
	<b>4</b>	<b>at Wyoming Cowgirls (11/21/14)</b>
	4	HAWAII (11/16/14)
<b>TURNOVERS</b>	<b>22</b>	<b>at Colorado State (12/11/14)</b>
	20	HAWAII (11/16/14)
<b>FOULS</b>	<b>27</b>	<b>SIEW (11/28/14)</b>
	21	CSF (12/3/14)



**Denver Women's Basketball**  
**DEN High/Low Analysis (as of Dec 17, 2014)**  
**All games**

**DEN - GAME LOWS**

<b>POINTS</b>	<b>41</b>	<b>at Wyoming Cowgirls (11/21/14)</b>
	43	BEL (11/29/14)
	<b>49</b>	<b>COLO (11/25/14)</b>
	58	HAWAII (11/16/14)
	<b>61</b>	<b>CSF (12/3/14)</b>
	61	at Colorado State (12/11/14)
<b>FIELD GOALS MADE</b>	<b>15</b>	<b>BEL (11/29/14)</b>
	16	at Wyoming Cowgirls (11/21/14)
<b>FIELD GOAL ATTEMPTS</b>	<b>47</b>	<b>HAWAII (11/16/14)</b>
	50	at Colorado State (12/11/14)
<b>FIELD GOAL PERCENTAGE</b>	<b>.271 (16-59)</b>	<b>at Wyoming Cowgirls (11/21/14)</b>
	.281 (18-64)	COLO (11/25/14)
<b>3 PT FIELD GOALS MADE</b>	<b>1</b>	<b>at Wyoming Cowgirls (11/21/14)</b>
	4	COLO (11/25/14)
	<b>4</b>	<b>BEL (11/29/14)</b>
	4	CSF (12/3/14)
<b>3 PT FG ATTEMPTS</b>	<b>14</b>	<b>at Wyoming Cowgirls (11/21/14)</b>
	15	BEL (11/29/14)
	<b>15</b>	<b>at Weber State (12/15/14)</b>
<b>3 PT FG PERCENTAGE</b>	<b>.071 (1-14)</b>	<b>at Wyoming Cowgirls (11/21/14)</b>
	<b>.148 (4-27)</b>	<b>COLO (11/25/14)</b>
<b>FREE THROWS MADE</b>	<b>8</b>	<b>at Wyoming Cowgirls (11/21/14)</b>
	<b>9</b>	<b>COLO (11/25/14)</b>
	9	BEL (11/29/14)
<b>FREE THROW ATTEMPTS</b>	<b>9</b>	<b>at Wyoming Cowgirls (11/21/14)</b>
	14	at Weber State (12/15/14)
<b>FREE THROW PERCENTAGE</b>	<b>.529 (9-17)</b>	<b>COLO (11/25/14)</b>
	.600 (9-15)	BEL (11/29/14)
<b>REBOUNDS</b>	<b>29</b>	<b>SIEW (11/28/14)</b>
	29	at Weber State (12/15/14)
<b>ASSISTS</b>	<b>4</b>	<b>at Wyoming Cowgirls (11/21/14)</b>
	8	COLO (11/25/14)
<b>STEALS</b>	<b>2</b>	<b>at Wyoming Cowgirls (11/21/14)</b>
	3	UMKC (12/6/14)
	<b>3</b>	<b>AF (12/8/14)</b>
<b>BLOCKED SHOTS</b>	<b>1</b>	<b>at Colorado State (12/11/14)</b>
	<b>2</b>	<b>SIEW (11/28/14)</b>
	2	CSF (12/3/14)
	<b>2</b>	<b>at Weber State (12/15/14)</b>
<b>TURNOVERS</b>	<b>11</b>	<b>AF (12/8/14)</b>
	<b>12</b>	<b>CSF (12/3/14)</b>
	12	UMKC (12/6/14)
<b>FOULS</b>	<b>13</b>	<b>COLO (11/25/14)</b>
	17	at Wyoming Cowgirls (11/21/14)
	<b>17</b>	<b>at Weber State (12/15/14)</b>

**Denver Women's Basketball**  
**DEN Category Leaders (as of Dec 17, 2014)**  
**All games**

<u>Points</u>	<u>G</u>	<u>Pts</u>	<u>Pts/G</u>
Bradley, Paige	10	125	12.5
Van Riper-Rose, Morg	10	108	10.8
Poss, Jacqulyn	10	71	7.1
Johnston, Jordan	10	68	6.8
Espinoza, Alecia	10	62	6.2
Spittel, Jesse	9	44	4.9
Alt, Jordyn	10	35	3.5
Burroughs, Kaila	8	34	4.3
Lee, Tamara	8	30	3.8
Morgan, Ciera	9	24	2.7
Queen, Avery	10	14	1.4
Bryant, Tori	8	4	0.5

<u>FG Percentage</u>	<u>FG</u>	<u>Att</u>	<u>Pct</u>
Espinoza, Alecia	26	50	.520
Queen, Avery	6	13	.462
Poss, Jacqulyn	29	67	.433
Van Riper-Rose, Morg	39	103	.379
Bradley, Paige	39	104	.375
Lee, Tamara	9	25	.360
Spittel, Jesse	13	37	.351
Alt, Jordyn	11	37	.297
Morgan, Ciera	5	17	.294
Burroughs, Kaila	10	35	.286
Johnston, Jordan	22	80	.275
Bryant, Tori	2	11	.182

<u>3-Point Percentage</u>	<u>3FG</u>	<u>Att</u>	<u>Pct</u>
Espinoza, Alecia	2	5	.400
Bradley, Paige	16	42	.381
Lee, Tamara	6	16	.375
Van Riper-Rose, Morg	25	70	.357
Burroughs, Kaila	4	12	.333
Poss, Jacqulyn	9	33	.273
Johnston, Jordan	9	36	.250
Morgan, Ciera	0	1	.000
Alt, Jordyn	0	4	.000

<u>Free Throw Percent</u>	<u>FG</u>	<u>Att</u>	<u>Pct</u>
Queen, Avery	2	2	1.000
Morgan, Ciera	14	16	.875
Johnston, Jordan	15	19	.789
Burroughs, Kaila	10	13	.769
Spittel, Jesse	18	26	.692
Bradley, Paige	31	46	.674
Lee, Tamara	6	9	.667
Poss, Jacqulyn	4	6	.667
Alt, Jordyn	13	20	.650
Espinoza, Alecia	8	13	.615
Van Riper-Rose, Morg	5	9	.556
Bryant, Tori	0	1	.000

<u>Scoring Average</u>	<u>G</u>	<u>Pts</u>	<u>Avg/G</u>
Bradley, Paige	10	125	12.5
Van Riper-Rose, Morg	10	108	10.8
Poss, Jacqulyn	10	71	7.1
Johnston, Jordan	10	68	6.8
Espinoza, Alecia	10	62	6.2
Spittel, Jesse	9	44	4.9
Burroughs, Kaila	8	34	4.3
Lee, Tamara	8	30	3.8
Alt, Jordyn	10	35	3.5
Morgan, Ciera	9	24	2.7
Queen, Avery	10	14	1.4
Bryant, Tori	8	4	0.5

<u>Field Goal Attempts</u>	<u>G</u>	<u>Att</u>	<u>Att/G</u>
Bradley, Paige	10	104	10.4
Van Riper-Rose, Morg	10	103	10.3
Johnston, Jordan	10	80	8.0
Poss, Jacqulyn	10	67	6.7
Espinoza, Alecia	10	50	5.0

<u>Field Goals Made</u>	<u>G</u>	<u>Made</u>	<u>Made/G</u>
Van Riper-Rose, Morg	10	39	3.9
Bradley, Paige	10	39	3.9
Poss, Jacqulyn	10	29	2.9
Espinoza, Alecia	10	26	2.6
Johnston, Jordan	10	22	2.2

<u>3-Point FG Attempts</u>	<u>G</u>	<u>Att</u>	<u>Att/G</u>
Van Riper-Rose, Morg	10	70	7.0
Bradley, Paige	10	42	4.2
Johnston, Jordan	10	36	3.6
Poss, Jacqulyn	10	33	3.3
Lee, Tamara	8	16	2.0

<u>3-Point FG Made</u>	<u>G</u>	<u>Made</u>	<u>Made/G</u>
Van Riper-Rose, Morg	10	25	2.5
Bradley, Paige	10	16	1.6
Johnston, Jordan	10	9	0.9
Poss, Jacqulyn	10	9	0.9
Lee, Tamara	8	6	0.8

<u>Free Throw Attempts</u>	<u>G</u>	<u>Att</u>	<u>Att/G</u>
Bradley, Paige	10	46	4.6
Spittel, Jesse	9	26	2.9
Alt, Jordyn	10	20	2.0
Johnston, Jordan	10	19	1.9
Morgan, Ciera	9	16	1.8

<u>Free Throws Made</u>	<u>G</u>	<u>Made</u>	<u>Made/G</u>
Bradley, Paige	10	31	3.1
Spittel, Jesse	9	18	2.0
Johnston, Jordan	10	15	1.5
Morgan, Ciera	9	14	1.6
Alt, Jordyn	10	13	1.3

**Denver Women's Basketball**  
**DEN Category Leaders (as of Dec 17, 2014)**  
**All games**

<u>Rebounds</u>	<u>G</u>	<u>Reb</u>	<u>Reb/G</u>
Alt, Jordyn	10	56	5.6
Espinoza, Alecia	10	55	5.5
Johnston, Jordan	10	40	4.0
Bradley, Paige	10	40	4.0
Spittel, Jesse	9	37	4.1

<u>Rebound Average</u>	<u>G</u>	<u>Reb</u>	<u>Avg/G</u>
Alt, Jordyn	10	56	5.6
Espinoza, Alecia	10	55	5.5
Spittel, Jesse	9	37	4.1
Johnston, Jordan	10	40	4.0
Bradley, Paige	10	40	4.0

<u>Offensive Rebounds</u>	<u>G</u>	<u>No.</u>	<u>Avg/G</u>
Alt, Jordyn	10	21	2.1
Spittel, Jesse	9	20	2.2
Espinoza, Alecia	10	19	1.9
Johnston, Jordan	10	11	1.1
Queen, Avery	10	8	0.8
Bradley, Paige	10	8	0.8

<u>Defensive Rebounds</u>	<u>G</u>	<u>No.</u>	<u>Avg/G</u>
Espinoza, Alecia	10	36	3.6
Alt, Jordyn	10	35	3.5
Van Riper-Rose, Morg	10	33	3.3
Bradley, Paige	10	32	3.2
Johnston, Jordan	10	29	2.9

<u>Fouls</u>	<u>G</u>	<u>No.</u>	<u>Per/G</u>
Espinoza, Alecia	10	29	2.9
Alt, Jordyn	10	28	2.8
Spittel, Jesse	9	21	2.3
Bradley, Paige	10	20	2.0
Poss, Jacqulyn	10	17	1.7

<u>Foulsouts</u>	<u>G</u>	<u>No.</u>
Espinoza, Alecia	10	3
Lee, Tamara	8	1
Morgan, Ciera	9	1
Spittel, Jesse	9	1
Bradley, Paige	10	1

<u>Assists</u>	<u>G</u>	<u>No.</u>	<u>Asst/G</u>
Bradley, Paige	10	38	3.8
Van Riper-Rose, Morg	10	23	2.3
Morgan, Ciera	9	16	1.8
Poss, Jacqulyn	10	16	1.6
Johnston, Jordan	10	9	0.9

<u>Steals</u>	<u>G</u>	<u>No.</u>	<u>Stl/G</u>
Bradley, Paige	10	10	1.0
Van Riper-Rose, Morg	10	10	1.0
Espinoza, Alecia	10	7	0.7
Johnston, Jordan	10	5	0.5
Burroughs, Kaila	8	5	0.6

<u>Blocked Shots</u>	<u>G</u>	<u>No.</u>	<u>Blk/G</u>
Johnston, Jordan	10	7	0.7
Bryant, Tori	8	3	0.4
Queen, Avery	10	3	0.3
Morgan, Ciera	9	3	0.3
Spittel, Jesse	9	3	0.3
Espinoza, Alecia	10	3	0.3

<u>Minutes</u>	<u>G</u>	<u>No.</u>	<u>Min/G</u>
Van Riper-Rose, Morg	10	302	30.2
Bradley, Paige	10	289	28.9
Johnston, Jordan	10	240	24.0
Espinoza, Alecia	10	217	21.7
Poss, Jacqulyn	10	186	18.6

<u>Turnovers</u>	<u>G</u>	<u>No.</u>	<u>TO/G</u>
Espinoza, Alecia	10	29	2.9
Bradley, Paige	10	25	2.5
Alt, Jordyn	10	20	2.0
Johnston, Jordan	10	18	1.8
Poss, Jacqulyn	10	17	1.7



# morgan VAN RIPER-ROSE

Guard • Sr. • 5-10  
Eden Prairie, Minn.  
Eden Prairie H.S



Season	gp-gs	min/avg	Total fg-fga	pct	3-Point fg-fga	pct	F-Throws ft-fa	pct	Rebounds off def tot	avg	pf	fo	ast	to	blk	stl	pts	avg
2011-12	31-16	952/30.7	108-288	.375	57-165	.345	32-43	.744	19 50 69	2.2	42	0	45	49	6	28	305	9.8
2012-13	31-31	1024/33.0	150-407	.369	62-180	.344	50-55	.909	16 48 64	2.1	39	1	57	67	5	28	412	13.3
2013-14	29-28	783/27.0	89-248	.359	51-147	.347	33-37	.892	4 46 50	1.7	50	1	55	40	9	21	262	9.0
2014-15	10-10	302/30.2	39-103	.379	25-70	.357	5-9	.556	1 33 34	3.4	10	0	23	16	2	10	108	10.8
<b>TOTAL</b>	<b>101-85</b>	<b>3061/30.3</b>	<b>386-1046</b>	<b>.369</b>	<b>195-562</b>	<b>.347</b>	<b>120-144</b>	<b>.833</b>	<b>40 177 217</b>	<b>2.1</b>	<b>141</b>	<b>2</b>	<b>180</b>	<b>172</b>	<b>22</b>	<b>87</b>	<b>1087</b>	<b>10.8</b>

Season	gp-gs	min/avg	Total fg-fga	pct	3-Point fg-fga	pct	F-Throws ft-fa	pct	Rebounds off def tot	avg	pf	fo	ast	to	blk	stl	pts	avg
2011-12	16-14	543/33.9	75-180	.417	38-99	.384	15-22	.682	9 23 32	2.0	20	0	26	23	4	17	203	12.7
2012-13	18-18	571/31.7	84-243	.346	37-115	.322	25-28	.893	10 28 38	2.1	27	1	30	35	5	20	230	12.8
2013-14	14-14	397/28.4	43-126	.341	27-85	.318	11-15	.733	2 23 25	1.8	30	1	32	19	3	10	124	8.9
<b>TOTAL</b>	<b>48-46</b>	<b>1511/31.5</b>	<b>202-549</b>	<b>.368</b>	<b>102-299</b>	<b>.341</b>	<b>51-65</b>	<b>.785</b>	<b>21 74 95</b>	<b>2.0</b>	<b>77</b>	<b>2</b>	<b>88</b>	<b>77</b>	<b>12</b>	<b>47</b>	<b>557</b>	<b>11.6</b>

## Van Riper-Rose's 2014-15 Game-By-Game Stats

### #10 Van Riper-Rose, Morg

Opponent	Date	gs	min	Total		3-Pointers		Free throws		Rebounds				pf	a	t/o	blk	stl	pts	avg	
				fg-fga	pct	3fg-fga	pct	ft-fa	pct	off	def	tot	avg								
HAWAII	11/16/14	*	37	2-9	.222	0-5	.000	0-1	.000	0	3	3	3.0	1	2	2	0	2	4	4.0	
at Wyoming Cowgirls	11/21/14	*	20	2-7	.286	0-3	.000	0-1	.000	0	2	2	2.5	1	0	3	0	1	4	4.0	
COLO	11/25/14	*	29	2-10	.200	1-7	.143	0-0	.000	0	3	3	2.7	0	1	1	1	1	5	4.3	
SIEW	11/28/14	*	27	2-10	.200	2-8	.250	0-0	.000	0	7	7	3.8	2	1	2	0	0	6	4.8	
BEL	11/29/14	*	15	2-5	.400	1-3	.333	0-0	.000	0	2	2	3.4	0	1	1	0	1	5	4.8	
CSF	12/3/14	*	36	5-16	.313	3-12	.250	1-1	1.000	0	0	0	2.8	0	3	1	0	0	14	6.3	
UMKC	12/6/14	*	39	3-9	.333	1-6	.167	4-5	.800	1	3	4	3.0	3	6	2	0	3	11	7.0	
AF	12/8/14	*	28	11-17	.647	10-13	.769	0-0	.000	0	7	7	3.5	1	4	0	1	1	32	10.1	
at Colorado State	12/11/14	*	33	4-6	.667	3-5	.600	0-1	.000	0	3	3	3.4	1	3	4	0	0	11	10.2	
at Weber State	12/15/14	*	38	6-14	.429	4-8	.500	0-0	.000	0	3	3	3.4	1	2	0	0	1	16	10.8	
Totals			10	302	39-103	.379	25-70	.357	5-9	.556	1	33	34	3.4	10	23	16	2	10	108	10.8

Games played: 10  
Minutes/game: 30.2  
Points/game: 10.8  
FG Pct: 37.9  
3FG Pct: 35.7  
FT Pct: 55.6

Rebounds/game: 3.4  
Assists/game: 2.3  
Turnovers/game: 1.6  
Assist/turnover ratio: 1.4  
Steals/game: 1.0  
Blocks/game: 0.2

## AWARDS

- 2012-13 WAC All-Academic
- 2011-12 SBC Commissioner's List

## 2013-14:

- Played in 29 games, starting in 28 games this season, averaged 27.0 minutes, 9.0 points, 1.7 rebounds and 1.9 assists per game.
- Shot 35.9 percent from the field, 34.7 percent from three-point range and 89.2 percent from the line (33-of-37).
- Scored in double-figures in 12 games played this season; 42 games over her career.
- Has scored 20 points or more three times this season; 15 games over her career.
- Has scored 15 or more points in seven games this season; 28 games over her career.
- Saw her 55-consecutive game starting streak come to an end against North Texas.
- Tied her career-high in three-pointers (6) and tied her season-high in points (22) against South Dakota (01/12/14) and Wyoming (11/12/13).
- Tied her career-high of five assists at Cal State Fullerton (01/03/14) and against North Dakota State (03/01/14).
- Shot a season-high 57.1 (4-of-7) percent from three-point range against UC Irvine (11/21/13).
- Grabbed a career-high eight rebounds vs. Wyoming (11/12/13), including two offensive rebounds.

## 2012-13:

- Started all 31 games.
- Led the Pioneers with 33 minutes played per-contest.
- Averaged 13.3 points and 2.1 rebounds per-game.
- Scored over-20 points nine times.
- Tied for fourth in the WAC with 2.1 three-pointer per-game.
- 12th in the WAC in points per-game.
- Scored a career-high 28 points and tallied a career-best six three-pointers against Colorado (12/11/12).
- Set a career-high with seven rebounds vs. New Mexico State (1/26/13).
- Tallied a season-best five assists against Texas State (2/2/13).

## 2011-12:

- Saw action in all 31 games, starting 16 times.
- Named 2011-12 All-Colorado Freshman of the Year by the Denver Post.

- Named DU's Most Valuable Freshman.
- Averaged 9.8 points per game and 2.2 rebounds while shooting 37.5 percent from the field.
- Third in the SBC in three point baskets made (1.8), sixth in three-point field goal percentage (34.5) and 20th in points per game.
- Season-high 21 points on 8-for-16 shooting from the field against Louisiana-Lafayette.
- Season-high in steals (6) and assists (5) against Middle Tennessee (02/04/12).
- Grabbed a season-high six rebounds against Wyoming (11/14/11).
- Played a season-high 39 minutes against Middle Tennessee (02/04/12).
- Led Denver in scoring seven times.



**Denver Women's Basketball**  
**DEN GAME HIGHS (as of Dec 17, 2014)**  
**All games**

**Van Riper-Rose, Morg - GAME HIGHS**

<b>Points</b>	<b>32</b>	<b>AF (12/8/14)</b>
	16	at Weber State (12/15/14)
	<b>14</b>	<b>CSF (12/3/14)</b>
	11	at Colorado State (12/11/14)
	<b>11</b>	<b>UMKC (12/6/14)</b>
Field Goals Made	11	AF (12/8/14)
	<b>6</b>	<b>at Weber State (12/15/14)</b>
Field Goal Attempts	17	AF (12/8/14)
	<b>16</b>	<b>CSF (12/3/14)</b>
FG Pct (min 5 made)	.647 (11-17)	AF (12/8/14)
	<b>.429 (6-14)</b>	<b>at Weber State (12/15/14)</b>
3-Point Field Goals Made	10	AF (12/8/14)
	<b>4</b>	<b>at Weber State (12/15/14)</b>
3-Point FG Attempts	13	AF (12/8/14)
	<b>12</b>	<b>CSF (12/3/14)</b>
3-Pt FG Pct (min 2 made)	.769 (10-13)	AF (12/8/14)
	<b>.600 (3-5)</b>	<b>at Colorado State (12/11/14)</b>
Free Throws Made	4	UMKC (12/6/14)
	<b>1</b>	<b>CSF (12/3/14)</b>
Free Throw Attempts	5	UMKC (12/6/14)
	<b>1</b>	<b>at Colorado State (12/11/14)</b>
	1	CSF (12/3/14)
	1	at Wyoming Cowgirls (11/21/14)
	1	HAWAII (11/16/14)
<b>FT Pct (min 3 made)</b>	<b>.800 (4-5)</b>	<b>UMKC (12/6/14)</b>
Rebounds	7	AF (12/8/14)
	<b>7</b>	<b>SJEW (11/28/14)</b>
Assists	6	UMKC (12/6/14)
	<b>4</b>	<b>AF (12/8/14)</b>
Steals	3	UMKC (12/6/14)
	<b>2</b>	<b>HAWAII (11/16/14)</b>
Blocked Shots	1	AF (12/8/14)
	<b>1</b>	<b>COLD (11/25/14)</b>
Turnovers	4	at Colorado State (12/11/14)
<b>Fouls</b>	<b>3</b>	<b>UMKC (12/6/14)</b>
Minutes	39	UMKC (12/6/14)
	<b>38</b>	<b>at Weber State (12/15/14)</b>



# Jordan JOHNSTON

Guard • Sr. • 5-10

Waterloo, Iowa

Waterloo West H.S.



## JOHNSTON'S CAREER STATS - OVERALL

Season	gp-gs	min/avg	Total fg-fga	pct	3-Point fg-fga	pct	F-Throws ft-fla	pct	Rebounds off	def	tot	avg	pf	fo	ast	to	blk	stl	pts	avg
2011-12	31-4	708/22.8	67-195	.344	30-98	.306	29-41	.707	21	71	92	3.0	50	0	39	48	4	18	193	6.2
2012-13	30-15	510/17.0	63-183	.344	25-79	.316	26-32	.813	26	47	73	2.4	42	0	14	42	5	18	177	5.9
2013-14	32-0	500/15.6	65-183	.355	28-87	.322	37-50	.740	11	30	41	1.3	40	1	29	31	1	19	195	6.1
2014-15	10-10	240/24.0	22-80	.275	9-36	.250	15-19	.789	11	29	40	4.0	11	0	9	18	7	5	68	6.8
<b>TOTAL</b>	<b>103-29</b>	<b>1958/19.0</b>	<b>217-641</b>	<b>.339</b>	<b>92-300</b>	<b>.307</b>	<b>107-142</b>	<b>.754</b>	<b>69</b>	<b>177</b>	<b>245</b>	<b>2.4</b>	<b>143</b>	<b>1</b>	<b>91</b>	<b>139</b>	<b>17</b>	<b>60</b>	<b>633</b>	<b>6.1</b>

## JOHNSTON'S CAREER STATS - CONFERENCE

Season	gp-gs	min/avg	Total fg-fga	pct	3-Point fg-fga	pct	F-Throws ft-fla	pct	Rebounds off	def	tot	avg	pf	fo	ast	to	blk	stl	pts	avg
2011-12	16-4	437/27.3	45-121	.372	21-66	.318	13-21	.619	18	51	69	4.3	27	0	27	31	4	6	124	7.8
2012-13	17-4	260/15.3	34-98	.347	14-43	.326	15-19	.789	17	24	41	2.4	24	0	6	19	2	10	97	5.7
2013-14	14-0	204/14.6	26-71	.366	8-33	.242	12-15	.800	6	11	17	1.2	20	1	16	12	0	12	72	5.1
<b>TOTAL</b>	<b>47-8</b>	<b>901/19.2</b>	<b>105-290</b>	<b>.362</b>	<b>43-142</b>	<b>.303</b>	<b>40-55</b>	<b>.727</b>	<b>41</b>	<b>86</b>	<b>127</b>	<b>2.7</b>	<b>71</b>	<b>1</b>	<b>49</b>	<b>62</b>	<b>6</b>	<b>28</b>	<b>293</b>	<b>6.2</b>

## AWARDS

- 2012-13 WAC All-Academic
- 2011-12 SBC Honor Roll

## 2013-14:

- Has played in all 32 games this season averaged 15.6 minutes, 6.1 points, 1.3 rebounds and 0.9 assists per game.
- Shot 35.5 percent from the field and 32.2 percent from three-point range (28-of-87) on the season.
- Tied her career-high in steals (3) at IUPUI (01/18/14).
- Set new career-highs in points (16), field-goal attempts (14), free-throws made (7) and free-throws attempted (10) at Illinois State (12/30/13).
- Recorded 10 points on 3-of-5 from beyond the arc and a season-high five rebounds against Colorado State (12/08/13).

## 2012-13:

- Played in 30 games, starting 15.
- Averaged 5.9 points and 2.4 rebounds per-game.
- Matched a career-high with 14 points at UTSA (1/5/13).
- Shot 81.3 percent (26-of-32) from the free throw line.
- Made four three-pointers in 35 minutes of action at Oregon (12/2/12).
- Made a career-best six field goals at UTSA (1/5/13).
- Tallied six rebounds at Colorado State (12/20/12).

## 2011-12:

- Saw action in all 31 games, starting four
- Averaged 6.2 points and 3.0 rebounds
- Went 29-for-41 (70.7 percent) from the free throw stripe for the season
- Averaged 22.8 minutes per game
- Tied a season-high with 14 points against Louisi-

## Johnston's 2014-15 Game-By-Game Stats

### #11 Johnston, Jordan

Opponent	Date	gs	min	Total		3-Pointers		Free throws		Rebounds				pf	a	t/o	blk	stl	pts	avg
				fg-fga	pct	3fg-fga	pct	ft-fla	pct	off	def	tot	avg							
HAWAII	11/16/14	*	31	2-10	.200	2-7	.286	5-6	.833	0	7	7	7.0	2	1	2	1	1	11	11.0
at Wyoming Cowgirls	11/21/14	*	16	1-4	.250	0-2	.000	0-0	.000	0	1	1	4.0	1	0	0	0	0	2	6.5
COLO	11/25/14	*	28	2-10	.200	0-3	.000	3-4	.750	6	3	9	5.7	1	1	1	0	0	7	6.7
SIEW	11/28/14	*	26	5-10	.500	3-3	1.000	2-2	1.000	2	1	3	5.0	2	3	1	0	1	15	8.8
BEL	11/29/14	*	34	2-10	.200	0-3	.000	1-2	.500	1	6	7	5.4	2	1	3	2	0	5	8.0
CSF	12/3/14	*	23	2-6	.333	1-4	.250	0-0	.000	0	2	2	4.8	0	0	2	1	0	5	7.5
UMKC	12/6/14	*	27	2-10	.200	1-6	.167	1-2	.500	1	3	4	4.7	0	0	2	3	0	6	7.3
AF	12/8/14	*	14	2-7	.286	0-2	.000	0-0	.000	1	1	2	4.4	1	1	1	0	1	4	6.9
at Colorado State	12/11/14	*	13	1-4	.250	0-2	.000	1-1	1.000	0	1	1	4.0	0	0	0	0	0	3	6.4
at Weber State	12/15/14	*	28	3-9	.333	2-4	.500	2-2	1.000	0	4	4	4.0	2	2	6	0	2	10	6.8
Totals		10	240	22-80	.275	9-36	.250	15-19	.789	11	29	40	4.0	11	9	18	7	5	68	6.8

Games played: 10  
Minutes/game: 24.0  
Points/game: 6.8  
FG Pct: 27.5  
3FG Pct: 25.0  
FT Pct: 78.9

Rebounds/game: 4.0  
Assists/game: 0.9  
Turnovers/game: 1.8  
Assist/turnover ratio: 0.5  
Steals/game: 0.5  
Blocks/game: 0.7

ana-Lafayette (02/01/12)

- Tallied a season-high with five field goals made against ULL
- Season-high eight rebounds against Troy (12/28/11)
- Season-high 36 minutes against Louisiana-Monroe (02/18/12)

**Denver Women's Basketball**  
**DEN GAME HIGHS (as of Dec 17, 2014)**  
**All games**

**Johnston, Jordan - GAME HIGHS**

Points	15		SIEW {11/28/14}
	11		HAWAII (11/16/14)
	10		at Weber State (12/15/14)
	7		COLO (11/25/14)
	6		UMKC (12/6/14)
Field Goals Made	5		SIEW (11/28/14)
	3		at Weber State (12/15/14)
Field Goal Attempts	10		UMKC (12/6/14)
	10		BEL (11/29/14)
	10		SIEW (11/28/14)
	10		COLO (11/25/14)
	10		HAWAII (11/16/14)
FG Pct (min 5 made)	.500	(5-10)	SIEW {11/28/14}
3-Point Field Goals Made	3		SIEW (11/28/14)
	2		at Weber State (12/15/14)
	2		HAWAII (11/16/14)
3-Point FG Attempts	7		HAWAII {11/16/14}
	6		UMKC (12/6/14)
3-Pt FG Pct (min 2 made)	1.000	(3-3)	SIEW {11/28/14}
	.500	(2-4)	at Weber State (12/15/14)
Free Throws Made	5		HAWAII {11/16/14}
	3		COLO (11/25/14)
Free Throw Attempts	6		HAWAII {11/16/14}
	4		COLO (11/25/14)
FT Pct (min 3 made)	.833	(5-6)	HAWAII {11/16/14}
	.750	(3-4)	COLO (11/25/14)
Rebounds	9		COLO {11/25/14}
	7		BEL (11/29/14)
	7		HAWAII {11/16/14}
Assists	3		SIEW (11/28/14)
	2		at Weber State (12/15/14)
Steals	2		at Weber State (12/15/14)
	1		AF {12/8/14}
	1		SIEW (11/28/14)
	1		HAWAII {11/16/14}
Blocked Shots	3		UMKC (12/6/14)
	2		BEL (11/29/14)
Turnovers	6		at Weber State (12/15/14)
Fouls	2		at Weber State (12/15/14)
	2		BEL (11/29/14)
	2		SIEW {11/28/14}
	2		HAWAII (11/16/14)
Minutes	34		BEL (11/29/14)
	31		HAWAII (11/16/14)



# jacqlyn POSS

Guard • So. • 5-9  
Shoreview, Minn.  
Roseville Area H.S.

# DENVER 12

## POSS' CAREER STATS - OVERALL

Season	gp-gs	min/avg	Total		3-Point		F-Throws		Rebounds				Scoring							
			fg-fga	pct	fg-fga	pct	ft-fla	pct	off	def	tot	avg	pf	fo	ast	to	blk	stl	pts	avg
2013-14	30-0	234/7.8	17-49	.347	14-37	.378	6-8	.750	4	14	18	0.6	21	0	12	26	2	1	54	1.8
2014-15	10-0	186/18.6	29-67	.433	9-33	.273	4-6	.667	5	11	16	1.6	17	0	16	17	0	4	71	7.1
TOTAL	40-0	420/10.5	46-116	.397	23-70	.329	10-14	.714	9	25	34	0.9	38	0	28	43	2	5	125	3.1

## POSS' CAREER STATS - CONFERENCE

		Total		3-Point		F-Throws		Rebounds										Scoring		
Season	gp-gs	min/avg	fg-fga	pct	fg-fga	pct	ft-fla	pct	off	def	tot	avg	pf	fo	ast	to	blk	stl	pts	avg
2013-14	14-0	122/8.7	10-28	.357	8-24	.333	2-2	1.000	1	8	9	0.6	5	0	6	13	1	0	30	2.1
TOTAL	14-0	122/8.7	10-28	.357	8-24	.333	2-2	1.000	1	8	9	0.6	5	0	6	13	1	0	30	2.1

## 2013-14:

- Played in 30 games this season, averaged 7.8 minutes, 1.8 points, 0.6 rebounds and 0.4 assists per game and shot 34.7% from the field and 37.8% from three.
- Tied her career high in blocks (1) against South Dakota State (02/27/14).
- Tied her career high in rebounds (2) at Omaha (02/22/14).
- Tied her career high in field-goal attempts (4) and set a new career high in three-point attempts (4) against Western Illinois (01/26/14).
- Tied her career-high in assists (2) against South Dakota (01/12/14).
- Scored a career-high 11 points, while also setting new career-highs in field goals made (3), attempted (4), three-pointers made (3), three-pointers attempted (4) and free-throws made (2) at Long Beach State (01/05/14).
- Notched her first steal and tied her career-high of free-throws made (1) and attempts (2) against North Texas (12/17/13).
- Tied her career-high of two rebounds at Northern Colorado (12/04/13) and at Omaha (02/27/14).
- Converted her first career free-throw off two attempts at Montana State (11/24/13).
- Grabbed a career-high two rebounds at Air Force (11/16/13).
- Scored her first collegiate points (3) against Wyoming (11/12/13).
- Had a season-high two assists in debut at Utah (11/08/13) and matched it at Air Force (11/16/13).

## BEFORE DENVER:

- Was a three-sport athlete at Roseville Area High School.
- Played five years of varsity basketball.
- Named a Miss Basketball of Minnesota candidate (2013) and was an Athena Award winner.
- Was a four-time All-Conference selection.
- Earned the Raider Character Award and MVP honors.
- Was named to the All-State Coaches Team twice (junior and senior seasons), All-State Honorable Mention once, Star Tribune All-Metro Third Team twice and Pioneer Press All-East Metro Team twice.

## Poss' 2014-15 Game-By-Game Stats

### #12 Poss, Jacqlyn

				Total		3-Pointers		Free throws		Rebounds										
Opponent	Date	gs	min	fg-fga	pct	3fg-fga	pct	ft-fita	pct	off	def	tot	avg	pf	a	t/o	blk	stl	pts	avg
HAWAII	11/16/14	23		5-8	.625	0-2	.000	0-0	.000	1	3	4	4.0	3	2	2	0	0	10	10.0
at Wyoming Cowgirls	11/21/14	16		1-4	.250	0-2	.000	0-0	.000	0	0	0	2.0	0	0	0	0	0	2	6.0
COLO	11/25/14	17		2-7	.286	1-3	.333	0-0	.000	0	2	2	2.0	0	3	3	0	2	5	5.7
SIEW	11/28/14	30		5-13	.385	2-9	.222	0-1	.000	0	3	3	2.3	3	3	3	0	1	12	7.3
BEL	11/29/14	33		4-9	.444	2-5	.400	0-0	.000	2	1	3	2.4	1	2	3	0	1	10	7.8
CSF	12/3/14	17		1-4	.250	0-2	.000	2-3	.667	0	2	2	2.3	3	0	1	0	0	4	7.2
UMKC	12/6/14	13		4-8	.500	1-2	.500	0-0	.000	1	0	1	2.1	3	2	0	0	0	9	7.4
AF	12/8/14	17		4-9	.444	3-8	.375	0-0	.000	0	0	0	1.9	0	3	2	0	0	11	7.9
at Colorado State	12/11/14	7		0-2	.000	0-0	.000	0-0	.000	0	0	0	1.7	1	0	0	0	0	0	7.0
at Weber State	12/15/14	13		3-3	1.000	0-0	.000	2-2	1.000	1	0	1	1.6	3	1	3	0	0	8	7.1
Totals		0	186	29-67	.433	9-33	.273	4-6	.667	5	11	16	1.6	17	16	17	0	4	71	7.1

Games played: 10  
Minutes/game: 18.6  
Points/game: 7.1  
FG Pct: 43.3  
3FG Pct: 27.3  
FT Pct: 66.7

Rebounds/game: 1.6  
Assists/game: 1.6  
Turnovers/game: 1.7  
Assist/turnover ratio: 0.9  
Steals/game: 0.4

- Held school record for three-pointers in a season (58) and a game (7).
- During junior year reached 1000th career point mark.
- Served as team captain for two years and was named Breakdown First-Team All-Showcase.
- Was featured on ESPN SportsCenter Top 10 Plays (12/02/10).
- Played four years of varsity tennis where she was a two-time All-Conference selection, earned the Raider Character Award, the Sportsmanship Award and was named a two-time Academic All-State recipient.

- Was a section runner-up and state qualifier during junior year and was an individual section finalist during senior year.
- Named team captain senior year or her tennis team.
- Competed in track and field for three years where she was named All-Conference Honorable Mention, while also receiving the Raider Character Award.
- Named Academic All-State Qualifier during junior year.
- Named team captain of her track and field team.



**Denver Women's Basketball**  
**DEN GAME HIGHS (as of Dec 17, 2014)**  
**All games**

**Poss, Jacquelyn - GAME HIGHS**

<b>Points</b>	<b>12</b>	<b>SIEW {11/28/14}</b>
	11	AF {12/8/14}
	<b>10</b>	<b>BEL {11/29/14}</b>
	10	HAWAII {11/16/14}
	<b>9</b>	<b>UMKC {12/6/14}</b>
Field Goals Made	5	SIEW {11/28/14}
	<b>5</b>	<b>HAWAII {11/16/14}</b>
Field Goal Attempts	13	SIEW {11/28/14}
	<b>9</b>	<b>AF {12/8/14}</b>
	9	BEL {11/29/14}
FG Pct (min 5 made)	<b>.625 (5-8)</b>	<b>HAWAII {11/16/14}</b>
	.385 (5-13)	SIEW {11/28/14}
3-Point Field Goals Made	<b>3</b>	<b>AF {12/8/14}</b>
	2	BEL {11/29/14}
	<b>2</b>	<b>SIEW {11/28/14}</b>
3-Point FG Attempts	9	SIEW {11/28/14}
	<b>8</b>	<b>AF {12/8/14}</b>
3-Pt FG Pct (min 2 made)	.400 (2-5)	BEL {11/29/14}
	<b>.375 (3-8)</b>	<b>AF {12/8/14}</b>
Free Throws Made	2	at Weber State (12/15/14)
	<b>2</b>	<b>CSF {12/3/14}</b>
Free Throw Attempts	3	CSF {12/3/14}
	<b>2</b>	<b>at Weber State (12/15/14)</b>
Rebounds	4	HAWAII {11/16/14}
	<b>3</b>	<b>BEL {11/29/14}</b>
	3	SIEW {11/28/14}
Assists	<b>3</b>	<b>AF {12/8/14}</b>
	3	SIEW {11/28/14}
	<b>3</b>	<b>COLO {11/25/14}</b>
Steals	2	COLO {11/25/14}
	<b>1</b>	<b>BEL {11/29/14}</b>
	1	SIEW {11/28/14}
Turnovers	<b>3</b>	<b>at Weber State (12/15/14)</b>
	3	BEL {11/29/14}
	<b>3</b>	<b>SIEW {11/28/14}</b>
	3	COLO {11/25/14}
Fouls	<b>3</b>	<b>at Weber State (12/15/14)</b>
	3	UMKC {12/6/14}
	<b>3</b>	<b>CSF {12/3/14}</b>
	3	SIEW {11/28/14}
	-	.....



# alecia ESPINOZA

Forward • So. • 6-1  
Hacienda Heights, Calif.  
Troy Tech H.S.



## ESPINOZA'S CAREER STATS - OVERALL

Season	gp-gs	min/avg	Total		3-Point		F-Throws		Rebounds				Other Stats								Scoring	
			fg-fga	pct	fg-fga	pct	ft-fa	pct	off	def	tot	avg	pf	fo	ast	to	blk	stl	pts	avg		
2013-14	29-0	288/9.9	35-75	.467	5-13	.385	7-17	.412	28	46	74	2.6	47	1	2	21	14	6	82	2.8		
2014-15	10-10	217/21.7	26-50	.520	2-5	.400	8-13	.615	19	36	55	5.5	29	3	6	29	3	7	62	6.2		
TOTAL	39-10	505/12.9	61-125	.488	7-18	.389	15-30	.500	47	82	129	3.3	76	4	8	50	17	13	144	3.7		

## ESPINOZA'S CAREER STATS - CONFERENCE

Season	gp-gs	min/avg	Total		3-Point		F-Throws		Rebounds					Scoring						
			fg-fga	pct	fg-fga	pct	ft-fa	pct	off	def	tot	avg	pf	fo	ast	to	blk	stl	pts	avg
2013-14	13-0	146/11.2	21-38	.553	3-5	.600	2-3	.667	11	28	39	3.0	23	0	1	7	10	5	47	3.6
TOTAL	13-0	146/11.2	21-38	.553	3-5	.600	2-3	.667	11	28	39	3.0	23	0	1	7	10	5	47	3.6

## 2013-14:

- Played in 29 games, averaged 9.9 minutes, 2.8 points and 2.6 rebounds per game.
- Tallied 14 blocks, 6 steals and 74 rebounds.
- Shot 5-for-13 from three-point land, 38.5%.
- Grabbed at least one rebound in 20-of-29 games played this season.
- Tied her career high in points (10), free-throws made (2) and assists (1) against Omaha (01/23/14).
- Tied her career-high in field-goals made (4) at IPFW (01/16/14).
- Grabbed her first career steal and tied her career-high in three-pointers made (1) against South Dakota (01/12/14).
- Grabbed a career-high 11 rebounds and attempted a career-high five free-throws at Long Beach State (01/05/14).
- Recorded first assist and attempted career-high seven field-goals at Colorado (12/12/13),
- Recorded a career-high 10 points on a career-high 4-of-5 shooting from the field and a career-high 2-of-3 from the free-throw line against Montana (11/27/13).
- Attempted her first free-throw and tied her career-high of two field-goals made at Montana (11/24/13).
- Recorded her first career block at Air Force (11/16/13).

## BEFORE DENVER:

- Played at Troy Tech High School in Hacienda Heights, Calif.
- Four-year varsity letter winner in basketball
- Team captain her senior year
- Member of a team that holds the longest active state record in California for most consecutive league wins (180 wins).
- Helped lead her team to four Freeway League Championships (2010, 2011, 2012, 2013)
- Helped lead team to CIF Southern Division I-A finals once (2011), semifinals twice (2010, 2013) and quarterfinals (2012)
- 2011 Most Outstanding Player in Mater Dei Matt Denning Hoops Classic.
- Named 2010-11 and 2011-12 First-Team All-League.
- Three time Team MVP (2011, 2012, 2013)
- Named Most Defensive Player (2013).
- Two time All-Freeway League Team Selection (2012, 2013)

## Espinoza's 2014-15 Game-By-Game Stats

### #15 Espinoza, Alecia

Opponent	Date	gs	min	Total		3-Pointers		Free throws		Rebounds				pf	a	t/o	blk	stl	pts	avg.	
				fg-fga	pct	3fg-fga	pct	ft-fla	pct	off	def	tot	avg								
HAWAII	11/16/14	*	22	3-4	.750	1-1	1.000	2-3	.667	0	5	5	5.0	2	0	2	0	2	9	9.0	
at Wyoming Cowgirls	11/21/14	*	23	2-6	.333	0-0	.000	0-0	.000	2	3	5	5.0	5	0	5	1	0	4	6.5	
COLO	11/25/14	*	20	3-7	.429	0-2	.000	0-1	.000	0	0	0	3.3	2	0	2	0	1	6	6.3	
SIEW	11/28/14	*	10	1-2	.500	0-0	.000	0-0	.000	1	1	2	3.0	5	1	3	0	0	2	5.3	
BEL	11/29/14	*	6	0-2	.000	0-0	.000	0-0	.000	0	0	0	2.4	2	0	2	0	0	0	4.2	
CSF	12/3/14	*	25	5-6	.833	0-0	.000	2-5	.400	5	4	9	3.5	5	2	3	0	3	12	5.5	
UMKC	12/6/14	*	36	3-5	.600	1-1	1.000	0-0	.000	4	8	12	4.7	2	1	3	0	0	7	5.7	
AF	12/8/14	*	22	4-5	.800	0-0	.000	2-2	1.000	5	7	12	5.6	3	1	4	1	1	10	6.3	
at Colorado State	12/11/14	*	15	1-4	.250	0-1	.000	2-2	1.000	0	3	3	5.3	2	0	3	0	0	4	6.0	
at Weber State	12/15/14	*	38	4-9	.444	0-0	.000	0-0	.000	2	5	7	5.5	1	1	2	1	0	8	6.2	
Totals			10	217	26-50	.520	2-5	.400	8-13	.615	19	36	55	5.5	29	6	29	3	7	62	6.2

Games played: 10  
Minutes/game: 21.7  
Points/game: 6.2  
FG Pct: 52.0  
3FG Pct: 40.0  
FT Pct: 61.5

Rebounds/game: 5.5  
Assists/game: 0.6  
Turnovers/game: 2.9  
Assist/turnover ratio: 0.2  
Steals/game: 0.7  
Blocks/game: 0.3

- Named First-Team All-League ( 2010, 2011, 2013, 2013),
- Named All CIF (2011, 2012)
- Participated in Nike Nationals
- 2013 Southern California North/South All-Star
- Played for California Swish 2008-2011
- Played for California Storm-Team Taurasi 2012-2013

**Denver Women's Basketball**  
**DEN GAME HIGHS (as of Dec 17, 2014)**  
**All games**

**Espinosa, Alecia - GAME HIGHS**

<b>Points</b>	<b>12</b>	<b>CSF (12/3/14)</b>
	10	AF (12/8/14)
	<b>9</b>	<b>HAWAII (11/16/14)</b>
	8	at Weber State (12/15/14)
	<b>7</b>	<b>UMKC (12/6/14)</b>
Field Goals Made	5	CSF (12/3/14)
	<b>4</b>	<b>at Weber State (12/15/14)</b>
	4	AF (12/8/14)
Field Goal Attempts	<b>9</b>	<b>at Weber State (12/15/14)</b>
	7	COLO (11/25/14)
FG Pct (min 5 made)	<b>.833 (5-6)</b>	<b>CSF (12/3/14)</b>
3-Point Field Goals Made	1	UMKC (12/6/14)
	<b>1</b>	<b>HAWAII (11/16/14)</b>
3-Point FG Attempts	2	COLO (11/25/14)
	<b>1</b>	<b>at Colorado State (12/11/14)</b>
	1	UMKC (12/6/14)
	<b>1</b>	<b>HAWAII (11/16/14)</b>
Free Throws Made	2	at Colorado State (12/11/14)
	<b>2</b>	<b>AF (12/8/14)</b>
	2	CSF (12/3/14)
	<b>2</b>	<b>HAWAII (11/16/14)</b>
Free Throw Attempts	5	CSF (12/3/14)
	<b>3</b>	<b>HAWAII (11/16/14)</b>
Rebounds	12	AF (12/8/14)
	<b>12</b>	<b>UMKC (12/6/14)</b>
Assists	2	CSF (12/3/14)
	<b>1</b>	<b>at Weber State (12/15/14)</b>
	1	AF (12/8/14)
	<b>1</b>	<b>UMKC (12/6/14)</b>
	1	SIEW (11/28/14)
Steals	<b>3</b>	<b>CSF (12/3/14)</b>
	2	HAWAII (11/16/14)
Blocked Shots	<b>1</b>	<b>at Weber State (12/15/14)</b>
	1	AF (12/8/14)
	<b>1</b>	<b>at Wyoming Cowgirls (11/21/14)</b>
Turnovers	5	at Wyoming Cowgirls (11/21/14)
Fouls	<b>5</b>	<b>CSF (12/3/14)</b>
	5	SIEW (11/28/14)
	<b>5</b>	<b>at Wyoming Cowgirls (11/21/14)</b>
Minutes	38	at Weber State (12/15/14)
	<b>36</b>	<b>UMKC (12/6/14)</b>



# cc (ciera) MORGAN

Guard • Fr. • 5-9  
Parker, Colo.  
Highlands Ranch H.S.



## MORGAN'S CAREER STATS - OVERALL

Season	gp-gs min/avg		Total		3-Point		F-Throws		Rebounds				Scoring							
			fg-fga	pct	fg-fga	pct	ft-fle	pct	off	def	tot	avg	pf	fo	ast	to	blk	stl	pts	avg
2014-15	9-0	119/13.2	5-17	.294	0-1	.000	14-16	.875	4	15	19	2.1	16	1	16	10	3	1	24	2.7
TOTAL	9-0	119/13.2	5-17	.294	0-1	.000	14-16	.875	4	15	19	2.1	16	1	16	10	3	1	24	2.7

## MORGAN'S CAREER STATS - CONFERENCE

### BEFORE DENVER:

- Was a four-year varsity letterman at guard for Highlands Ranch High School and a team captain.
- Helped her team win the 5A Colorado State Championship in 2011.
- Named a Scholar-Athlete and an All-League selection.
- Named MVP of Music City Madness in 2013.
- Named MVP CSA in 2010.
- Competed in track and field, qualifying for state championships in the 4x100 and the sprint medley relay.
- Finished eighth at the state championships in the long jump.

### Morgan's 2014-15 Game-By-Game Stats

#### #20 Morgan, Ciera

Opponent	Date	gp	min	Total		3-Point		Free Throws		Rebounds											
				fg-fga	pct	3p-fga	pct	ft-fa	pct	off	def	tot	avg	pf	a	to	bk	stl	pts	avg	
WYOMING	11/16/14	10		0-1	.000	0-0	.000	2-2	1.000	0	1	1	1.0	2	0	4	1	0	2	2.0	
at Wyoming Cowgirls	11/21/14	21		1-5	.200	0-0	.000	2-2	1.000	1	4	5	3.0	2	1	1	1	0	4	3.0	
COLO	11/25/14	16		0-1	.000	0-0	.000	0-0	.000	0	2	2	2.7	1	1	2	1	1	2	2.7	
SIEW	11/28/14	15		0-1	.000	0-0	.000	0-0	.000	0	1	1	2.3	2	2	1	0	0	0	1.5	
DEL	11/29/14	6		0-0	.000	0-0	.000	0-0	.000	0	1	1	2.0	5	1	0	1	0	1	1.2	
CSF	12/3/14	20		2-6	.333	0-1	.000	4-4	1.000	2	0	2	2.0	2	1	0	1	0	8	2.3	
UNMKC	12/6/14	13		0-1	.000	0-0	.000	2-2	1.000	0	0	0	1.7	0	1	1	1	0	2	2.3	
AF	12/8/14	14		1-1	1.000	0-0	.000	3-4	.750	1	4	5	2.1	2	9	0	0	0	5	2.6	
at Colorado State	12/11/14	4		1-1	1.000	0-0	.000	1-2	.500	0	2	2	2.1	0	0	1	1	0	3	2.7	
Totals		0	119	5-17	.294	0-1	.000	14-16	.875	4	15	19	2.1	16	16	10	3	1	24	2.7	

Games played: 9  
Minutes/game: 13.2  
Points/game: 2.7  
FG Pct: .294  
3FG Pct: .000  
FT Pct: .875

Rebounds/game: 2.1  
Assists/game: 1.8  
Turnovers/game: 1.1  
Assist/turnover ratio: 1.6  
Steals/game: 0.1  
Blocks/game: 0.3



**Denver Women's Basketball**  
**DEN GAME HIGHS (as of Dec 12, 2014)**  
**All games**

**Morgan Gera - GAME HIGHS**

Points	<b>8</b>	<b>CSF (12/3/14)</b>
	5	AF (12/8/14)
	<b>4</b>	<b>at Wyoming Cowgirls (11/21/14)</b>
	3	at Colorado State (12/11/14)
	<b>2</b>	<b>UMKC (12/6/14)</b>
	2	HAWAII (11/16/14)
Field Goals Made	<b>2</b>	<b>CSF (12/3/14)</b>
	1	at Colorado State (12/11/14)
	<b>1</b>	<b>AF (12/8/14)</b>
	1	at Wyoming Cowgirls (11/21/14)
Field Goal Attempts	<b>6</b>	<b>CSF (12/3/14)</b>
	5	at Wyoming Cowgirls (11/21/14)
3-Point FG Attempts	<b>1</b>	<b>CSF (12/3/14)</b>
Free Throws Made	4	CSF (12/3/14)
	<b>3</b>	<b>AF (12/8/14)</b>
Free Throw Attempts	4	AF (12/8/14)
	<b>4</b>	<b>CSF (12/3/14)</b>
FT Pct (min 3 made)	1.000 (4-4)	CSF (12/3/14)
	<b>.750 (3-4)</b>	<b>AF (12/8/14)</b>
Rebounds	5	AF (12/8/14)
	<b>5</b>	<b>at Wyoming Cowgirls (11/21/14)</b>
Assists	9	AF (12/8/14)
	<b>2</b>	<b>SJEW (11/28/14)</b>
Steals	1	COLO (11/25/14)
Blocked Shots	<b>1</b>	<b>CSF (12/3/14)</b>
	1	at Wyoming Cowgirls (11/21/14)
	<b>1</b>	<b>HAWAII (11/16/14)</b>
Turnovers	4	HAWAII (11/16/14)
Fouls	<b>5</b>	<b>BEL (11/29/14)</b>
Minutes	21	at Wyoming Cowgirls (11/21/14)
	<b>20</b>	<b>CSF (12/3/14)</b>



# paige BRADLEY

Guard • Jr. • 5-9

The Woodlands, Texas

The Woodlands H.S.

# DENVER

# 22

## BRADLEY'S CAREER STATS - OVERALL

Season	gp-gs	min/avg	Total fg-fga	pct	3-Point fg-fga	pct	F-Throws ft-fa	pct	Rebounds off def tot	avg	pf	fo	ast	to	blk	stl	Scoring pts avg
2012-13	27-0	201/7.4	24-60	.400	3-16	.188	4-9	.444	3 13 16	0.6	13	0	15	30	1	11	55 2.0
2013-14	32-32	1034/32.3	127-334	.380	48-118	.407	98-128	.766	19 99 118	3.7	88	5	156	110	8	32	400 12.5
2014-15	10-10	289/28.9	39-104	.375	16-42	.381	31-46	.674	8 32 40	4.0	20	1	38	25	1	10	125 12.5
TOTAL	69-42	1524/22.1	190-498	.382	67-176	.381	133-183	.727	30 144 174	2.5	121	6	209	165	10	53	580 8.4

## BRADLEY'S CAREER STATS - CONFERENCE

Season	gp-gs	min/avg	Total fg-fga	pct	3-Point fg-fga	pct	F-Throws ft-fa	pct	Rebounds off def tot	avg	pf	fo	ast	to	blk	stl	Scoring pts avg
2012-13	14-0	103/7.4	9-28	.321	0-5	.000	3-7	.429	1 8 9	0.6	10	0	9	13	0	8	21 1.5
2013-14	14-14	461/32.9	53-155	.342	21-60	.350	37-44	.841	9 52 61	4.4	40	2	71	49	4	16	164 11.7
TOTAL	28-14	564/20.1	62-183	.339	21-65	.323	40-51	.784	10 60 70	2.5	50	2	80	62	4	24	185 6.6

## AWARDS

- 2013-14 All-Summit League Honorable Mention
- 2012-13 WAC All-Academic

## 2013-14:

- Started all 31 games this season, averaged 12.5 points, 4.9 assists, 3.7 rebounds in 31.8 minutes per game.
- Shot 38.0 percent from the field, 40.7 percent from three-point range and 76.6 percent from the free-throw line.
- Recorded three or more assists in 27-of-31 games this season.
- Scored in double-figures 20 times this season.
- Tied her career high of 24 points and made a career-high five three-pointers against Fort Wayne (03/09/14) in the Quarterfinals of the Summit League Tournament.
- Converted a career-high seven free-throws at South Dakota (02/07/14).
- Tied her career high in points (24) and three-pointers made (4), while setting a new career-high in three-pointers attempted (11) at South Dakota State (01/30/14).
- Tied her career high in three-pointers made (4) at Western Illinois (02/20/14).
- Finished with a career-high eight assists against Western Illinois (01/26/14) and against Fort Wayne (02/15/14).
- Finished with a career-high 11 rebounds against Omaha (01/23/14).
- Set new career highs in rebounds (6) and steals (4), while tying her career-high in three-pointers made (4) at Illinois State (12/30/13).
- Set new career-highs in points (24), field-goals made (10), field-goals attempted (22), three-pointers made (4) and three-pointers attempted (7) at Northern Colorado (12/04/13).
- Set a new career-high in free-throw attempts (8) and tied her career-high (6) in free-throws made against Montana (11/27/13).
- Tied her career-high of one block against UC Irvine (11/21/13).

## 2012-13:

- Played in 27 games.

## Bradley's 2013-14 Game-By-Game Stats

### #22 Bradley, Paige

Opponent	Date	gs	min	Total fg-fga	pct	3-Pointers fg-fga	pct	Free throws ft-fa	pct	Rebounds off def tot	avg	pf	a	t/o	blk	stl	pts avg
HAWAII	11/16/14	*	36	4-8	.500	3-5	.600	7-8	.875	0 6 6	6.0	5	2	4	1	1	18 18.0
at Wyoming Cowgirls	11/21/14	*	26	0-10	.000	0-4	.000	0-0	.000	2 1 3	4.5	1	1	2	0	1	0 9.0
COLO	11/25/14	*	31	6-16	.375	2-6	.333	1-6	.167	2 1 3	4.0	0	1	3	0	2	15 11.0
SIEW	11/28/14	*	30	2-7	.286	1-4	.250	2-2	1.000	0 2 2	3.5	2	3	4	0	2	7 10.0
BEL	11/29/14	*	18	1-6	.167	0-2	.000	3-4	.750	0 3 3	3.4	1	4	2	0	1	5 9.0
CSF	12/3/14	*	24	4-11	.364	0-5	.000	6-8	.750	1 6 7	4.0	3	4	1	0	1	14 9.8
UMKC	12/6/14	*	28	3-9	.333	1-3	.333	3-5	.600	1 3 4	4.0	3	6	1	0	0	10 9.9
AF	12/8/14	*	26	7-13	.538	2-4	.500	3-6	.500	2 5 7	4.4	1	8	1	0	0	19 11.0
at Colorado State	12/11/14	*	36	6-11	.545	4-6	.667	2-3	.667	0 2 2	4.1	3	2	3	0	1	18 11.8
at Weber State	12/15/14	*	34	6-13	.462	3-3	1.000	4-4	1.000	0 3 3	4.0	1	7	4	0	1	19 12.5
Totals			10	289	39-104	.375	16-42	.381	31-46	.674	8 32 40	4.0	20	38	25	1 10	125 12.5

Games played: 10  
Minutes/game: 28.9  
Points/game: 12.5  
FG Pct: 37.5  
3FG Pct: 38.1  
FT Pct: 67.4

Rebounds/game: 4.0  
Assists/game: 3.8  
Turnovers/game: 2.5  
Assist/turnover ratio: 1.5  
Steals/game: 1.0  
Blocks/game: 0.1

- Averaged 2.0 points and 0.6 rebounds per-contest.
- Shot 40.0 percent (24-of-60).
- Recorded a season-high nine points at Wyoming (11/17/12).
- Tallied four assists against Idaho (1/10/13).
- Played 21 minutes at Louisiana Tech (3/9/13).

**Denver Women's Basketball**  
**DEN GAME HIGHS (as of Dec 17, 2014)**  
**All games**

**Bradley, Paige - GAME HIGHS**

<b>Points</b>	<b>19</b>	<b>at Weber State (12/15/14)</b>
	19	AF (12/8/14)
	<b>18</b>	<b>at Colorado State (12/11/14)</b>
	18	HAWAII (11/16/14)
	<b>15</b>	<b>COLO (11/25/14)</b>
Field Goals Made	7	AF (12/8/14)
	<b>6</b>	<b>at Weber State (12/15/14)</b>
	6	at Colorado State (12/11/14)
	<b>6</b>	<b>COLO (11/25/14)</b>
Field Goal Attempts	16	COLO (11/25/14)
	<b>13</b>	<b>at Weber State (12/15/14)</b>
	13	AF (12/8/14)
<b>FG Pct (min 5 made)</b>	<b>.545 (6-11)</b>	<b>at Colorado State (12/11/14)</b>
	.538 (7-13)	AF (12/8/14)
<b>3-Point Field Goals Made</b>	<b>4</b>	<b>at Colorado State (12/11/14)</b>
	3	at Weber State (12/15/14)
	<b>3</b>	<b>HAWAII (11/16/14)</b>
3-Point FG Attempts	6	at Colorado State (12/11/14)
	<b>6</b>	<b>COLO (11/25/14)</b>
3-Pt FG Pct (min 2 made)	1.000 (3-3)	at Weber State (12/15/14)
	<b>.667 (4-6)</b>	<b>at Colorado State (12/11/14)</b>
Free Throws Made	7	HAWAII (11/16/14)
	<b>6</b>	<b>CSF (12/3/14)</b>
Free Throw Attempts	8	CSF (12/3/14)
	<b>8</b>	<b>HAWAII (11/16/14)</b>
FT Pct (min 3 made)	1.000 (4-4)	at Weber State (12/15/14)
	<b>.875 (7-8)</b>	<b>HAWAII (11/16/14)</b>
Rebounds	7	AF (12/8/14)
	<b>7</b>	<b>CSF (12/3/14)</b>
Assists	8	AF (12/8/14)
	<b>7</b>	<b>at Weber State (12/15/14)</b>
Steals	2	SIEW (11/28/14)
	<b>2</b>	<b>COLO (11/25/14)</b>
Blocked Shots	1	HAWAII (11/16/14)
<b>Turnovers</b>	<b>4</b>	<b>at Weber State (12/15/14)</b>
	4	SIEW (11/28/14)
	<b>4</b>	<b>HAWAII (11/16/14)</b>
Fouls	5	HAWAII (11/16/14)
<b>Minutes</b>	<b>36</b>	<b>at Colorado State (12/11/14)</b>
	36	HAWAII (11/16/14)



## kaila BURROUGHS

Guard • Fr. • 6-1

St. Cloud, Minn.

St. Cloud Technical H.S.

# DENVER

## 23

### BURROUGHS' CAREER STATS - OVERALL

Season	gp-gs	min/avg	Total fg-fga	pct	3-Point fg-fga	pct	F-Throws ft-fla	pct	Rebounds off def tot	avg	pf	fo	ast	to	blk	stl	Scoring pts avg
2014-15	8-0	95/11.9	10-35	.286	4-12	.333	10-13	.769	2 12 14	1.8	10	0	1	4	2	5	34 4.3
TOTAL	8-0	95/11.9	10-35	.286	4-12	.333	10-13	.769	2 12 14	1.8	10	0	1	4	2	5	34 4.3

### BURROUGHS' CAREER STATS - CONFERENCE

#### BEFORE DENVER:

- Played four years of basketball at St. Cloud Technical High School.
- Named All-Conference her sophomore and junior seasons.
- Named All-Conference Honorable Mention her freshman season.
- Named MVP of the All-Tournament Team.
- Was a state tournament participant.

#### Burroughs' 2014-15 Game-By-Game Stats

##### #23 Burroughs, Kaila

Opponent	Date	gs	min	Total fg-fga	pct	3-Pointers 3fg-fga	pct	Free throws ft-fla	pct	Rebounds off def tot	avg	pf	a	t/o	blk	stl	pts	avg
at Wyoming Cowgirls	11/21/14	20		3-4	.750	1-1	1.000	2-2	1.000	0 1 1	1.0	3	0	1	0	0	9	9.0
COLO	11/25/14	13		2-6	.333	0-4	.000	0-0	.000	1 2 3	2.0	1	0	3	0	3	4	6.5
SIEW	11/28/14	12		0-4	.000	0-0	.000	4-4	1.000	0 1 1	1.7	1	0	0	0	0	4	5.7
BEL	11/29/14	17		1-5	.200	1-2	.500	0-0	.000	0 1 1	1.5	0	0	0	1	1	3	5.0
CSF	12/3/14	0		0-0	.000	0-0	.000	0-0	.000	0 0 0	1.2	1	0	0	0	0	0	4.0
UMKC	12/6/14	dnp		-	-	-	-	-	-	-	-	-	-	-	-	-	-	-
AF	12/8/14	5		2-4	.500	1-2	.500	2-3	.667	0 0 0	1.0	0	0	0	0	0	7	4.5
at Colorado State	12/11/14	22		2-8	.250	1-3	.333	2-4	.500	0 6 6	1.7	3	1	0	0	0	7	4.9
at Weber State	12/15/14	6		0-4	.000	0-0	.000	0-0	.000	1 1 2	1.8	1	0	0	1	1	0	4.3
Totals		0	95	10-35	.286	4-12	.333	10-13	.769	2 12 14	1.8	10	1	4	2	5	34	4.3

Games played: 8  
 Minutes/game: 11.9  
 Points/game: 4.3  
 FG Pct: 28.6  
 3FG Pct: 33.3  
 FT Pct: 76.9

Rebounds/game: 1.8  
 Assists/game: 0.1  
 Turnovers/game: 0.5  
 Assist/turnover ratio: 0.3  
 Steals/game: 0.6  
 Blocks/game: 0.3



**Denver Women's Basketball**  
**DEN GAME HIGHS (as of Dec 17, 2014)**  
**All games**

**Burroughs, Kaila - GAME HIGHS**

<b>Points</b>	<b>9</b>	<b>at Wyoming Cowgirls (11/21/14)</b>
	7	at Colorado State (12/11/14)
	<b>7</b>	<b>AF (12/8/14)</b>
	4	SIEW (11/28/14)
	<b>4</b>	<b>COLO (11/25/14)</b>
Field Goals Made	3	at Wyoming Cowgirls (11/21/14)
	<b>2</b>	<b>at Colorado State (12/11/14)</b>
	2	AF (12/8/14)
	<b>2</b>	<b>COLO (11/25/14)</b>
Field Goal Attempts	8	at Colorado State (12/11/14)
	<b>6</b>	<b>COLO (11/25/14)</b>
3-Point Field Goals Made	1	at Colorado State (12/11/14)
	<b>1</b>	<b>AF (12/8/14)</b>
	1	BEL (11/29/14)
	<b>1</b>	<b>at Wyoming Cowgirls (11/21/14)</b>
3-Point FG Attempts	4	COLO (11/25/14)
	<b>3</b>	<b>at Colorado State (12/11/14)</b>
Free Throws Made	4	SIEW (11/28/14)
	<b>2</b>	<b>at Colorado State (12/11/14)</b>
	2	AF (12/8/14)
	<b>2</b>	<b>at Wyoming Cowgirls (11/21/14)</b>
Free Throw Attempts	4	at Colorado State (12/11/14)
	<b>4</b>	<b>SIEW (11/28/14)</b>
FT Pct (min 3 made)	1.000 (4-4)	SIEW (11/28/14)
<b>Rebounds</b>	<b>6</b>	<b>at Colorado State (12/11/14)</b>
	3	COLO (11/25/14)
<b>Assists</b>	<b>1</b>	<b>at Colorado State (12/11/14)</b>
Steals	3	COLO (11/25/14)
	<b>1</b>	<b>at Weber State (12/15/14)</b>
	1	BEL (11/29/14)
<b>Blocked Shots</b>	<b>1</b>	<b>at Weber State (12/15/14)</b>
	1	BEL (11/29/14)
<b>Turnovers</b>	<b>3</b>	<b>COLO (11/25/14)</b>
Fouls	3	at Colorado State (12/11/14)
	<b>3</b>	<b>at Wyoming Cowgirls (11/21/14)</b>
Minutes	22	at Colorado State (12/11/14)
	<b>20</b>	<b>at Wyoming Cowgirls (11/21/14)</b>



## tamara LEE

Guard • Fr. • 5-8  
Edmond, Okla.  
Edmond Santa Fe H.S.

# DENVER

## 24

### LEE'S CAREER STATS - OVERALL

Season	gp-gs	min/avg	Total fg-fga	pct	3-Point fg-fga	pct	F-Throws ft-fa	pct	Rebounds off def tot	avg	pf	fo	ast	to	blk	stl	Scoring pts avg
2014-15	8-0	65/8.1	9-25	.360	6-16	.375	6-9	.667	1 7 8	1.0	9	1	3	6	1	4	30 3.8
TOTAL	8-0	65/8.1	9-25	.360	6-16	.375	6-9	.667	1 7 8	1.0	9	1	3	6	1	4	30 3.8

### LEE'S CAREER STATS - CONFERENCE

### BEFORE DENVER:

- Played basketball at Edmond Santa Fe High School.
- Was a two-time State 6A Girls Basketball Champion (2010-11, 2011-12).
- Participated with the USA Under-16 National Team.
- Named to the Tulsa World Third Team All-State Girls Basketball Team, an Honorable Mention All-State Girls Team by The Daily Oklahoman and a First Team Big All City Girls selection by The Daily Oklahoman (2012-13).
- Named First Team Vype Magazine Large City and a Pre-season Vype Magazine Top-100 Athlete (2012-13).
- Named a Second Team Metro Athletic All-Conference selection in 2012-13.
- Her team was a semifinalist at the State Tournament, leading the State Tournament in scoring in two games, averaging 26.5 points (2012-13).
- Named to the State Tournament First Team All-Tournament team (2012-13).
- Named a 2011-12 First Team All-Tournament Team selection at the Edmond Open and the Skiatook Invitational.
- Named First Team All-Tournament and Tournament MVP at the Edmond Open and Skiatook Invitational (2012-13).
- Played club basketball with the Tulsa Gym Time Hoops (2010-11), the Oklahoma And I (2012) and the Oklahoma Select Red (2013).
- A 2010-11 Coaches Aid Honorable Mention State All-Tournament Team honoree.
- A 2010-11 Skiatook Invitational First Team all-Tournament Team selection.
- Also participated in track in high school, qualifying for state championships in the long-jump her freshman year.

### Lee's 2014-15 Game-By-Game Stats

#### #24 Lee, Tamara

Opponent	Date	gs	min	Total		3-Pointers		Free throws		Rebounds											
				fg-fga	pct	3fg-fga	pct	ft-fa	pct	off	def	tot	avg	pf	a	t/o	blk	stl	pts	avg	
HAWAII	11/16/14		dnp	-	-	-	-	-	-	-	-	-	-	-	-	-	-	-	-	-	
at Wyoming Cowgirls	11/21/14	8		0-2	.000	0-0	.000	0-0	.000	0	0	0	0.0	0	1	1	0	0	0	0.0	
COLO	11/25/14	3		0-1	.000	0-1	.000	0-0	.000	0	0	0	0.0	0	1	0	0	0	0	0.0	
SIEW	11/28/14	3		2-2	1.000	1-1	1.000	1-2	.500	0	1	1	0.3	0	0	0	0	0	6	2.0	
BEL	11/29/14	12		1-3	.333	0-0	.000	1-1	1.000	0	3	3	1.0	1	0	3	0	1	3	2.3	
CSF	12/3/14	2		0-2	.000	0-2	.000	0-0	.000	1	0	1	1.0	0	0	1	0	0	0	1.8	
UMKC	12/6/14	1		2-2	1.000	2-2	1.000	0-0	.000	0	1	1	1.0	2	0	0	0	0	6	2.5	
AF	12/8/14	16		3-7	.429	3-7	.429	1-2	.500	0	0	0	0.9	5	0	0	1	0	10	3.6	
at Colorado State	12/11/14	20		1-6	.167	0-3	.000	3-4	.750	0	2	2	1.0	1	1	1	0	3	5	3.8	
at Weber State	12/15/14		dnp	-	-	-	-	-	-	-	-	-	-	-	-	-	-	-	-	-	
Totals		0	65	9-25	.360	6-16	.375	6-9	.667	1	7	8	1.0	9	3	6	1	4	30	3.8	

Games played: 8  
Minutes/game: 8.1  
Points/game: 3.8  
FG Pct: 36.0  
3FG Pct: 37.5  
FT Pct: 66.7

Rebounds/game: 1.0  
Assists/game: 0.4  
Turnovers/game: 0.8  
Assist/turnover ratio: 0.5  
Steals/game: 0.5  
Blocks/game: 0.1

**Denver Women's Basketball**  
**DEN GAME HIGHS (as of Dec 17, 2014)**  
**All games**

**Lee, Tamara - GAME HIGHS**

<b>Points</b>	<b>10</b>	<b>AF (12/8/14)</b>
	6	UMKC (12/6/14)
	<b>6</b>	<b>SIEW (11/28/14)</b>
	5	at Colorado State (12/11/14)
	<b>3</b>	<b>BEL (11/29/14)</b>
Field Goals Made	3	AF (12/8/14)
	<b>2</b>	<b>UMKC (12/6/14)</b>
	2	SIEW (11/28/14)
Field Goal Attempts	<b>7</b>	<b>AF (12/8/14)</b>
	6	at Colorado State (12/11/14)
3-Point Field Goals Made	<b>3</b>	<b>AF (12/8/14)</b>
	2	UMKC (12/6/14)
3-Point FG Attempts	<b>7</b>	<b>AF (12/8/14)</b>
	3	at Colorado State (12/11/14)
3-Pt FG Pct (min 2 made)	<b>1.000 (2-2)</b>	<b>UMKC (12/6/14)</b>
	.429 (3-7)	AF (12/8/14)
Free Throws Made	<b>3</b>	<b>at Colorado State (12/11/14)</b>
	1	AF (12/8/14)
	<b>1</b>	<b>BEL (11/29/14)</b>
	1	SIEW (11/28/14)
Free Throw Attempts	<b>4</b>	<b>at Colorado State (12/11/14)</b>
	2	AF (12/8/14)
	<b>2</b>	<b>SIEW (11/28/14)</b>
FT Pct (min 3 made)	.750 (3-4)	at Colorado State (12/11/14)
Rebounds	<b>3</b>	<b>BEL (11/29/14)</b>
	2	at Colorado State (12/11/14)
Assists	<b>1</b>	<b>at Colorado State (12/11/14)</b>
	1	COLO (11/25/14)
	<b>1</b>	<b>at Wyoming Cowgirls (11/21/14)</b>
Steals	3	at Colorado State (12/11/14)
	<b>1</b>	<b>BEL (11/29/14)</b>
Blocked Shots	1	AF (12/8/14)
Turnovers	<b>3</b>	<b>BEL (11/29/14)</b>
Fouls	5	AF (12/8/14)
Minutes	<b>20</b>	<b>at Colorado State (12/11/14)</b>
	16	AF (12/8/14)



# jesse SPITTEL

Forward • So. • 6-2

Yorba Linda, Calif.

Orange Lutheran H.S.



## SPITTEL'S CAREER STATS - OVERALL

Season	gp-gs	min/avg	Total		3-Point		F-Throws		Rebounds				Other						Scoring	
			fg-fga	pct	fg-fga	pct	ft-fa	pct	off	def	tot	avg	pf	fo	ast	to	blk	stl	pts	avg
2013-14	11-0	82/7.5	7-10	.700	0-0	.000	4-8	.500	6	14	20	1.8	12	0	2	12	1	0	18	1.6
2014-15	9-9	178/19.8	13-37	.351	0-0	.000	18-26	.692	20	17	37	4.1	21	1	3	11	3	2	44	4.9
TOTAL	20-9	260/13.0	20-47	.426	0-0	.000	22-34	.647	26	31	57	2.9	33	1	5	23	4	2	62	3.1

## 2013-14:

- Only played in the first 11 games, missed the remainder of the season due to injury.
- Recorded at least one rebound in the last five games.
- Tied her career-high in rebounds (5) and field-goal attempts (3) at Marquette (12/20/13), while setting new career-highs in assists (2) and free-throw attempts (4).
- Recorded career-highs in rebounds (5) and blocks (1) vs. North Texas (12/17/13).
- Shot 70.0 percent from the field on 7-of-10 shooting and 50 percent from the free-throw line on 4-of-8 shooting.
- Grabbed a season-high three rebounds twice vs. Wyoming (11/12/13) and Colorado State (12-8-13).

## BEFORE DENVER:

- Played three years of basketball at Orange Lutheran High School.
- Played one year at Yorba Linda High School.
- Named 2011 All-Tournament at Ladycat Tournament.
- Named 2011 CIF Champion.
- Named 2011-2012 First-Team All-Trinity League
- Named 2012 Athlete of the Week by the OC Register.
- Named a Top Underclassman To Watch by the OC Register.
- Played for Orange County Elite Girls Basketball Club for five years.
- Played on the National Team for two years.

## Spittel's 2014-15 Game-By-Game Stats

### #31 Spittel, Jesse

Opponent	Date	gs	min	Total fg-fga	pct	3-Pointers fg-fga	pct	Free throws ft-fa	pct	Rebounds off def tot	avg	pf	a	t/o	blk	stl	pts	avg
at Wyoming Cowgirls	11/21/14	*	27	3-9	.333	0-0	.000	4-4	1.000	5 3	8	8.0	1	1	1	1	0	10 10.0
COLO	11/25/14	*	15	0-2	.000	0-0	.000	2-2	1.000	2 2	4	6.0	2	0	1	0	0	2 6.0
SIEW	11/28/14	*	23	3-5	.600	0-0	.000	2-3	.667	1 3	4	5.3	4	1	1	1	0	8 6.7
BEL	11/29/14	*	18	1-3	.333	0-0	.000	4-6	.667	1 1	2	4.5	5	0	0	0	0	6 6.5
CSF	12/3/14	*	23	1-2	.500	0-0	.000	0-1	.000	0 2	2	4.0	2	0	2	0	1	2 5.6
UMKC	12/6/14	*	14	2-8	.250	0-0	.000	2-2	1.000	5 2	7	4.5	1	0	1	0	0	6 5.7
AF	12/8/14	*	17	2-5	.400	0-0	.000	1-2	.500	3 2	5	4.6	1	0	1	0	0	5 5.6
at Colorado State	12/11/14	*	19	1-3	.333	0-0	.000	1-2	.500	2 0	2	4.3	1	0	3	1	0	3 5.3
at Weber State	12/15/14	*	22	0-0	.000	0-0	.000	2-4	.500	1 2	3	4.1	4	1	1	0	1	2 4.9
Totals		9	178	13-37	.351	0-0	.000	18-26	.692	20 17	37	4.1	21	3	11	3	2	44 4.9

Games played: 9  
Minutes/game: 19.8  
Points/game: 4.9  
FG Pct: 35.1  
FT Pct: 69.2

Rebounds/game: 4.1  
Assists/game: 0.3  
Turnovers/game: 1.2  
Assist/turnover ratio: 0.3  
Steals/game: 0.2  
Blocks/game: 0.3

**Denver Women's Basketball**  
**DEN GAME HIGHS (as of Dec 17, 2014)**  
**All games**

**Spittel, Jesse - GAME HIGHS**

<b>Points</b>	<b>10</b>	<b>at Wyoming Cowgirls (11/21/14)</b>
	8	SIEW (11/28/14)
	<b>6</b>	<b>UMKC (12/6/14)</b>
	6	BEL (11/29/14)
	<b>5</b>	<b>AF (12/8/14)</b>
Field Goals Made	3	SIEW (11/28/14)
	<b>3</b>	<b>at Wyoming Cowgirls (11/21/14)</b>
Field Goal Attempts	9	at Wyoming Cowgirls (11/21/14)
	<b>8</b>	<b>UMKC (12/6/14)</b>
Free Throws Made	4	BEL (11/29/14)
	<b>4</b>	<b>at Wyoming Cowgirls (11/21/14)</b>
Free Throw Attempts	6	BEL (11/29/14)
	<b>4</b>	<b>at Weber State (12/15/14)</b>
	4	at Wyoming Cowgirls (11/21/14)
FT Pct (min 3 made)	<b>1.000 (4-4)</b>	<b>at Wyoming Cowgirls (11/21/14)</b>
	.667 (4-6)	BEL (11/29/14)
<b>Rebounds</b>	<b>8</b>	<b>at Wyoming Cowgirls (11/21/14)</b>
	7	UMKC (12/6/14)
<b>Assists</b>	<b>1</b>	<b>at Weber State (12/15/14)</b>
	1	SIEW (11/28/14)
	<b>1</b>	<b>at Wyoming Cowgirls (11/21/14)</b>
Steals	1	at Weber State (12/15/14)
	<b>1</b>	<b>CSF (12/3/14)</b>
Blocked Shots	1	at Colorado State (12/11/14)
	<b>1</b>	<b>SIEW (11/28/14)</b>
	1	at Wyoming Cowgirls (11/21/14)
<b>Turnovers</b>	<b>3</b>	<b>at Colorado State (12/11/14)</b>
Fouls	5	BEL (11/29/14)
<b>Minutes</b>	<b>27</b>	<b>at Wyoming Cowgirls (11/21/14)</b>
	23	CSF (12/3/14)
	<b>23</b>	<b>SIEW (11/28/14)</b>





# tori BRYANT

Forward • So. • 6-0

Brea, Calif.

Brea Olinda H.S.



## BRYANT'S CAREER STATS - OVERALL

Season	gp-gs	min/avg	Total fg-fga	pct	3-Point fg-fga	pct	F-Throws ft-fa	pct	Rebounds off def tot	avg	pf	fo	ast	to	blk	stl	Scoring pts	avg
2014-15	8-1	39/4.9	2-11	.182	0-0	.000	0-1	.000	2 4 6	0.8	6	0	1	1	3	0	4	0.5
TOTAL	8-1	39/4.9	2-11	.182	0-0	.000	0-1	.000	2 4 6	0.8	6	0	1	1	3	0	4	0.5

## BRYANT'S CAREER STATS - CONFERENCE

### 2013-14:

- Did not play due to injury.

### Before Denver:

- Was a two-sport athlete (basketball and track and field) at Brea Olinda High School.
- Named to the 2012-13 All-Star Orange County North Team.
- Named 2012-13 First Team All-Century League.
- Named to the 2012-13 All-Tournament Team for Coaches vs. Cancer.
- Earned the 2011 Century League Scholar Athlete Award.
- Earned the 2011 Minds in Motion Scholar Athlete Award.
- Was a 2011 CIF SS Semifinalist.
- Earned a spot on the 2009-10 OSAA Top 100 Scorers' List.
- Named to the Honorable Mention OSAA 6A All-Star Team.
- Played club basketball for Team Concept AAU from 2008 to 2010.
- Played club basketball for West Coast Premiere AAU from 2010 to 2011.
- Was a three-year varsity athlete in track and field.
- Named to the 4-x-100 OSAA 6A All-State Second Team.

### Bryant's 2014-15 Game-By-Game Stats

#### #32 Bryant, Tori

Opponent	Date	gs	min	Total fg-fga	pct	3-Pointers 3fg-fga	pct	Free throws ft-fa	pct	Rebounds off def tot	avg	pf	a	t/o	blk	stl	pts	avg
HAWAII	11/16/14	*	15	1-5	.200	0-0	.000	0-1	.000	1 0 1	1.0	2	0	1	0	0	2	2.0
at Wyoming Cowgirls	11/21/14		3	1-2	.500	0-0	.000	0-0	.000	0 1 1	1.0	0	0	0	1	0	2	2.0
COLO	11/25/14		5	0-0	.000	0-0	.000	0-0	.000	0 0 0	0.7	3	0	0	1	0	0	1.3
SIEW	11/28/14		6	0-1	.000	0-0	.000	0-0	.000	0 0 0	0.5	0	0	0	1	0	0	1.0
BEL	11/29/14		3	0-1	.000	0-0	.000	0-0	.000	0 2 2	0.8	0	0	0	0	0	0	0.8
CSF	12/3/14		3	0-1	.000	0-0	.000	0-0	.000	0 0 0	0.7	0	1	0	0	0	0	0.7
UMKC	12/6/14		1	0-0	.000	0-0	.000	0-0	.000	0 0 0	0.6	0	0	0	0	0	0	0.6
AF	12/8/14		3	0-1	.000	0-0	.000	0-0	.000	1 1 2	0.8	1	0	0	0	0	0	0.5
at Colorado State	12/11/14	dnp		-	-	-	-	-	-	-	-	-	-	-	-	-	-	-
at Weber State	12/15/14	dnp		-	-	-	-	-	-	-	-	-	-	-	-	-	-	-
Totals		1	39	2-11	.182	0-0	.000	0-1	.000	2 4 6	0.8	6	1	1	3	0	4	0.5

Games played: 8  
Minutes/game: 4.9  
Points/game: 0.5  
FG Pct: 18.2  
FT Pct: 0.0

Rebounds/game: 0.8  
Assists/game: 0.1  
Turnovers/game: 0.1  
Assist/turnover ratio: 1.0  
Blocks/game: 0.4

**Denver Women's Basketball**  
**DEN GAME HIGHS (as of Dec 17, 2014)**  
**All games**

**Bryant, Tori - GAME HIGHS**

<b>Points</b>	<b>2</b>	<b>at Wyoming Cowgirls (11/21/14)</b>
	2	HAWAII (11/16/14)
<b>Field Goals Made</b>	<b>1</b>	<b>at Wyoming Cowgirls (11/21/14)</b>
	1	HAWAII (11/16/14)
<b>Field Goal Attempts</b>	<b>5</b>	<b>HAWAII (11/16/14)</b>
	2	at Wyoming Cowgirls (11/21/14)
<b>Free Throw Attempts</b>	<b>1</b>	<b>HAWAII (11/16/14)</b>
<b>Rebounds</b>	<b>2</b>	<b>AF (12/8/14)</b>
	2	BEL (11/29/14)
<b>Assists</b>	<b>1</b>	<b>CSF (12/3/14)</b>
<b>Blocked Shots</b>	<b>1</b>	<b>SJEW (11/28/14)</b>
	1	COLO (11/25/14)
	1	at Wyoming Cowgirls (11/21/14)
<b>Turnovers</b>	<b>1</b>	<b>HAWAII (11/16/14)</b>
<b>Fouls</b>	<b>3</b>	<b>COLD (11/25/14)</b>
<b>Minutes</b>	<b>15</b>	<b>HAWAII (11/16/14)</b>
	6	SJEW (11/28/14)



# avery QUEEN

Forward • Fr. • 6-2

Boerne, Texas

Boerne H.S.



## QUEEN'S CAREER STATS - OVERALL

Season	gp-gs min/avg		Total		3-Point		F-Throws		Rebounds				Scoring							
			fg-fga	pct	fg-fga	pct	ft-fla	pct	off	def	tot	avg	pf	fo	ast	to	blk	stl	pts	avg
2014-15	10-0	109/10.9	6-13	.462	0-0	.000	2-2	1.000	8	14	22	2.2	15	0	2	3	3	1	14	1.4
TOTAL	10-0	109/10.9	6-13	.462	0-0	.000	2-2	1.000	8	14	22	2.2	15	0	2	3	3	1	14	1.4

## QUEEN'S CAREER STATS - CONFERENCE

### BEFORE DENVER:

- Named to the Texas Girls Coaches Association All-State Team in 2013.
- Named to the Texas Association of Basketball Coaches All-State Team in 2013.
- Named to the All-Academic Team from 2011 to 2013.
- Named San Antonio Area Super Team selection in 2013.
- Named MVP of her district in 2013.
- Was a four-year varsity starter at the forward position at Boerne High School.
- Scored 1,000 career points and led the city of San Antonio in blocked shots at 3.5 per game.
- Named Offensive MVP and to the All-Area Team in 2012.
- Named First Team All-District in 2011.
- Played club basketball with San Antonio's Finest, Ray Caldwell for six years.

### Queen's 2014-15 Game-By-Game Stats

#### #40 Queen, Avery

Opponent	Date	gs	min	Total		3-Pointers		Free throws		Rebounds				pf	a	t/o	blk	stl	pts	avg
				fg-fga	pct	3fg-fga	pct	ft-fla	pct	off	def	tot	avg							
HAWAII	11/16/14	6		0-1	.000	0-0	.000	0-0	.000	0	0	0	0.0	0	0	0	0	0	0.0	
at Wyoming Cowgirls	11/21/14	6		1-1	1.000	0-0	.000	0-0	.000	1	0	1	0.5	0	0	0	0	2	1.0	
COLO	11/25/14	3		0-0	.000	0-0	.000	0-0	.000	1	0	1	0.7	0	0	0	0	0	0.7	
SIEW	11/28/14	9		0-0	.000	0-0	.000	0-0	.000	0	1	1	0.8	3	0	0	0	1	0.5	
BEL	11/29/14	28		3-5	.600	0-0	.000	0-0	.000	1	4	5	1.6	2	1	2	3	6	1.6	
CSF	12/3/14	17		0-2	.000	0-0	.000	2-2	1.000	2	5	7	2.5	3	0	0	0	2	1.7	
UMKC	12/6/14	7		1-1	1.000	0-0	.000	0-0	.000	0	0	0	2.1	1	0	0	0	2	1.7	
AF	12/8/14	16		0-2	.000	0-0	.000	0-0	.000	1	1	2	2.1	3	0	0	0	0	1.5	
at Colorado State	12/11/14	12		1-1	1.000	0-0	.000	0-0	.000	1	3	4	2.3	3	1	1	0	2	1.6	
at Weber State	12/15/14	5		0-0	.000	0-0	.000	0-0	.000	1	0	1	2.2	0	0	0	0	0	1.4	
Totals		0	109	6-13	.462	0-0	.000	2-2	1.000	8	14	22	2.2	15	2	3	3	14	1.4	

Games played: 10  
Minutes/game: 10.9  
Points/game: 1.4  
FG Pct: 46.2  
FT Pct: 100.0

Rebounds/game: 2.2  
Assists/game: 0.2  
Turnovers/game: 0.3  
Assist/turnover ratio: 0.7  
Steals/game: 0.1  
Blocks/game: 0.3

**Denver Women's Basketball**  
**DEN GAME HIGHS (as of Dec 17, 2014)**  
**All games**

**Queen, Avery - GAME HIGHS**

<b>Points</b>	<b>6</b>	<b>BEL (11/29/14)</b>
	<b>2</b>	<b>at Colorado State (12/11/14)</b>
	<b>2</b>	<b>UMKC (12/6/14)</b>
	<b>2</b>	<b>CSF (12/3/14)</b>
	<b>2</b>	<b>at Wyoming Cowgirls (11/21/14)</b>
Field Goals Made	<b>3</b>	<b>BEL (11/29/14)</b>
	<b>1</b>	<b>at Colorado State (12/11/14)</b>
	<b>1</b>	<b>UMKC (12/6/14)</b>
	<b>1</b>	<b>at Wyoming Cowgirls (11/21/14)</b>
Field Goal Attempts	<b>5</b>	<b>BEL (11/29/14)</b>
	<b>2</b>	<b>AF (12/8/14)</b>
	<b>2</b>	<b>CSF (12/3/14)</b>
Free Throws Made	<b>2</b>	<b>CSF (12/3/14)</b>
Free Throw Attempts	<b>2</b>	<b>CSF (12/3/14)</b>
Rebounds	<b>7</b>	<b>CSF (12/3/14)</b>
	<b>5</b>	<b>BEL (11/29/14)</b>
Assists	<b>1</b>	<b>at Colorado State (12/11/14)</b>
	<b>1</b>	<b>BEL (11/29/14)</b>
Steals	<b>1</b>	<b>SJEW (11/28/14)</b>
Blocked Shots	<b>3</b>	<b>BEL (11/29/14)</b>
Turnovers	<b>2</b>	<b>BEL (11/29/14)</b>
Fouls	<b>3</b>	<b>at Colorado State (12/11/14)</b>
	<b>3</b>	<b>AF (12/8/14)</b>
	<b>3</b>	<b>CSF (12/3/14)</b>
	<b>3</b>	<b>SJEW (11/28/14)</b>
Minutes	<b>28</b>	<b>BEL (11/29/14)</b>
	<b>17</b>	<b>CSF (12/3/14)</b>



Jordyn ALT

Forward • Fr. • 6-2  
North Oaks, Minn.  
Cretin-Derham Hall H.S.



ALT'S CAREER STATS - OVERALL

Season	gp-gs		min/avg		Total		3-Point		F-Throws		Rebounds				Scoring						
					fg-fga	pct	fg-fga	pct	ft-fga	pct	off	def	tot	avg	pts	fg	ft	ast	to	blk	stl
2014-15	10-0	161/16.1			11-37	.297	0-4	.000	13-20	.650	21	35	56	5.6	28	0	5	20	2	2	
TOTAL	10-0	161/16.1			11-37	.297	0-4	.000	13-20	.650	21	35	56	5.6	28	0	5	20	2	2	

ALT'S CAREER STATS - CONFERENCE

BEFORE DENVER:

- Played four years of basketball at Cretin-Derham Hall High School.
- Named a three-time Minnesota Suburban East All-Conference Player.
- Named a Minnesota All-State Honorable Mention selection.
- Was a 1,000 point scorer her junior year.

Alt's 2014-15 Game-By-Game Stats

#45 Alt, Jordyn																				
Opponent	Date	gs	min	Total fg-fga		3-Pointers 3fg-fga		Free throws ft-fa		Rebounds				pf	a	t/o	blk	stl	pts	avg
				fg-fga	pct	fg-fga	pct	ft-fa	pct	off	def	tot	avg							
HAWAII	11/16/14	20		0-1	.000	0-0	.000	2-2	1.000	2	8	10	10.0	3	2	3	1	0	2	2.0
at Wyoming Cowgirls	11/21/14	14		1-5	.200	0-2	.000	0-0	.000	0	2	2	6.0	3	0	1	0	0	2	2.0
COLO	11/25/14	20		1-4	.250	0-1	.000	3-4	.750	3	3	6	6.0	3	0	1	1	1	5	3.0
SIEW	11/28/14	9		0-2	.000	0-0	.000	2-2	1.000	1	3	4	5.5	3	0	0	0	0	2	2.8
BEL	11/29/14	10		0-3	.000	0-0	.000	0-2	.000	0	3	3	5.0	1	0	3	0	0	0	2.2
CSF	12/3/14	10		0-3	.000	0-0	.000	0-0	.000	1	1	2	4.5	2	0	1	0	0	0	1.8
UMKC	12/6/14	21		5-9	.556	0-0	.000	5-6	.833	5	5	10	5.3	4	1	2	0	0	15	3.7
AF	12/8/14	22		2-5	.400	0-0	.000	0-0	.000	6	8	14	6.4	2	0	2	0	0	4	3.8
at Colorado State	12/11/14	19		2-4	.500	0-1	.000	1-2	.500	2	1	3	6.0	3	2	5	0	1	5	3.9
at Weber State	12/15/14	16		0-1	.000	0-0	.000	0-2	.000	1	1	2	5.6	4	0	2	0	0	0	3.5
Totals		0	161	11-37	.297	0-4	.000	13-20	.650	21	35	56	5.6	28	5	20	2	2	35	3.5

Games played: 10  
Minutes/game: 16.1  
Points/game: 3.5  
FG Pct: 29.7  
3FG Pct: 0.0  
FT Pct: 65.0

Rebounds/game: 5.6  
Assists/game: 0.5  
Turnovers/game: 2.0  
Assist/turnover ratio: 0.3  
Steals/game: 0.2  
Blocks/game: 0.2



**Denver Women's Basketball**  
**DEN GAME HIGHS (as of Dec 17, 2014)**  
**All games**

**Alt. Jordyn - GAME HIGHS**

<b>Points</b>	<b>15</b>	<b>UMKC (12/6/14)</b>
	5	at Colorado State (12/11/14)
	<b>5</b>	<b>COLO (11/25/14)</b>
	4	AF (12/8/14)
	<b>2</b>	<b>SIUEW (11/28/14)</b>
	2	at Wyoming Cowgirls (11/21/14)
	<b>2</b>	<b>HAWAII (11/16/14)</b>
Field Goals Made	5	UMKC (12/6/14)
	<b>2</b>	<b>at Colorado State (12/11/14)</b>
	2	AF (12/8/14)
<b>Field Goal Attempts</b>	<b>9</b>	<b>UMKC (12/6/14)</b>
	5	AF (12/8/14)
	<b>5</b>	<b>at Wyoming Cowgirls (11/21/14)</b>
FG Pct (min 5 made)	.556 (5-9)	UMKC (12/6/14)
<b>3-Point FG Attempts</b>	<b>2</b>	<b>at Wyoming Cowgirls (11/21/14)</b>
	1	at Colorado State (12/11/14)
	<b>1</b>	<b>COLO (11/25/14)</b>
Free Throws Made	5	UMKC (12/6/14)
	<b>3</b>	<b>COLO (11/25/14)</b>
Free Throw Attempts	6	UMKC (12/6/14)
	<b>4</b>	<b>COLO (11/25/14)</b>
FT Pct (min 3 made)	.833 (5-6)	UMKC (12/6/14)
	<b>.750 (3-4)</b>	<b>COLO (11/25/14)</b>
Rebounds	14	AF (12/8/14)
	<b>10</b>	<b>UMKC (12/6/14)</b>
	10	HAWAII (11/16/14)
<b>Assists</b>	<b>2</b>	<b>at Colorado State (12/11/14)</b>
	2	HAWAII (11/16/14)
<b>Steals</b>	<b>1</b>	<b>at Colorado State (12/11/14)</b>
	1	COLO (11/25/14)
<b>Blocked Shots</b>	<b>1</b>	<b>COLO (11/25/14)</b>
	1	HAWAII (11/16/14)
<b>Turnovers</b>	<b>5</b>	<b>at Colorado State (12/11/14)</b>
Fouls	4	at Weber State (12/15/14)
	<b>4</b>	<b>UMKC (12/6/14)</b>
Minutes	22	AF (12/8/14)
	<b>21</b>	<b>UMKC (12/6/14)</b>

BOX SCORES

1 Hawai'i.....60  
Denver.....58

Nov. 16- Denver, Colo. (Magness Arena)

Official Basketball Box Score -- Game Totals -- Final Statistics  
Hawaii vs Denver  
11/16/14 1 p.m. MT at Denver, Colo. (Magness Arena)

Hawaii 60 • 2-0

#	Player		Total		3-Ptr		Rebounds				PF	TP	A	TO	Blk	Stl	Min
			FG	F-GA	FG	F-GA	FT	FT-A	Off	Def							
34	King, Destiny	f	1-5	0-0	1-2		2	2	4	4	3	2	1	0	1	23	13
33	Morris, Connie	c	1-5	0-0	1-2		5	2	7	1	3	0	2	0	0	13	13
21	Kuehu, Shawna-Lei	g	3-13	0-0	1-5		1	5	6	3	7	3	2	2	2	30	30
22	Karaitiana, Ashleigh	g	4-12	2-6	2-2		0	6	6	2	12	1	1	1	4	35	35
25	Mason, Morgan	g	6-13	3-6	8-10		3	4	7	3	23	4	2	0	1	32	32
04	Wimbley, Marissa		0-5	0-3	2-2		0	4	4	3	2	1	1	0	0	19	19
04	Harris, Briana		0-1	0-0	0-0		0	0	0	0	0	0	0	0	0	3	3
05	Toesina, Sarah		0-1	0-0	0-0		1	0	1	2	0	0	2	0	0	7	7
23	Moreno-Ross, Raja		0-0	0-0	0-0		0	0	0	0	0	0	0	0	0	0	0
24	Sampton, Dalayna		2-4	0-0	2-3		3	2	5	2	6	0	3	0	0	16	16
32	Segovia, Shawlana		2-6	0-1	0-0		2	2	4	3	4	2	1	0	1	20	20
Team							0	2	2								
Totals				19-65	5-16	17-26	17	29	46	23	60	13	15	3	9	200	200

FG % 1st Half: 9-31 29.0% 2nd half: 10-34 29.4% Game: 19-65 29.2%  
3FG % 1st Half: 2-7 28.6% 2nd half: 3-9 33.3% Game: 5-16 31.3%  
FT % 1st Half: 7-13 53.8% 2nd half: 10-13 76.9% Game: 17-26 65.4%

Denver 58 • 0-1

#	Player	FG-TOTAL				3-Ptr		Rebounds				PF	TP	A	TO	Blk	Stl	Min
		FG	FGA	FG%	FT	FTA	FT%	Def	Off									
15	Alecia Espinoza	f	3-4	1-1	2-3	0	5	5	2	9	0	2	0	2	22	15		
32	Tori Bryant	f	1-5	0-0	0-1	1	0	1	2	2	0	1	0	0	15	10		
10	Morg Van Ripper-Rose	g	2-9	0-5	0-1	0	3	3	1	4	2	2	0	2	37	11		
11	Jordan Johnston	g	2-10	2-7	5-6	0	7	7	2	11	1	2	1	1	31	11		
22	Paige Bradley	g	4-8	3-5	7-8	0	6	6	5	18	2	4	1	1	36	23		
12	Jacqlyn Poss	g	5-8	0-2	0-0	1	3	4	3	10	2	2	0	0	23	10		
20	Ciera Morgan		0-1	0-0	2-2	0	1	1	2	2	0	4	1	0	10	6		
06	Avery Queen		0-1	0-0	0-0	0	0	0	0	0	0	0	0	0	6	10		
45	Jordyn Alt		0-1	0-0	2-2	2	8	10	3	2	2	3	1	0	20	10		
Team						1	0	1										
Totals			17-47	6-20	18-23	5	33	38	20	58	9	20	4	6	200	10		
FG % 1st half: 8-27 29.6% 2nd half: 9-20 45.0% Game: 17-47 36.2% Deadball Rebound																		
3FG % 1st half: 2-13 15.4% 2nd half: 4-7 57.1% Game: 6-20 30.0%																		
FT % 1st half: 0-2 0.0% 2nd half: 18-21 85.7% Game: 18-23 78.3%																		

FG % 1st Half: 8-27 29.6% 2nd half: 9-20 45.0% Game: 17-47 36.2%  
3FG % 1st Half: 2-13 15.4% 2nd half: 4-7 57.1% Game: 6-20 30.0%  
FT % 1st Half: 0-2 0.0% 2nd half: 18-21 85.7% Game: 18-23 78.3%

Officials: Randy Campbell, Marty Cook, Katie Reese  
Technical fouls: Hawaii-None. Denver-None.  
Attendance: 479

Score by periods 1st 2nd Total  
Hawaii 27 33 60  
Denver 18 40 58

Last FG - UH 2nd-01:38, DEN 2nd-05:35.  
Largest lead - UH by 11 1st-01:25, DEN by 3 2nd-05:00.  
UH led for 35:10, DEN led for 02:41. Game was tied for 01:44.

4 Siena.....78  
Denver.....62

Nov. 28- Denver, Colo. (Magness Arena)

Official Basketball Box Score -- Game Totals -- Final Statistics  
SIEW vs DEN  
11/28/14 2:30 PM at Magness Arena (Denver, Colo.)

SIEW 78 • 3-0, 0-0 MAAC

#	Player		Total		3-Ptr		Rebounds		PF	TP	A	TO	Blk	Stl	Min
			FG	F-GA	FG	F-GA	FT	FT-A							
11	Hetzke, Margot	f	7-11	1-2	8-10	4	2	6	3	23	0	0	0	1	26
42	Donohue, Meghan	f	4-9	0-0	1-2	0	3	3	3	9	1	2	0	0	26
05	Krogh, Ida	g	2-6	2-5	1-2	1	5	6	1	7	6	2	0	3	37
27	Scarborough, Kollyns	g	2-7	0-0	4-4	4	2	6	3	8	1	2	0	2	25
25	Coles, Tehresa	g	4-11	0-4	4-6	0	5	5	1	12	1	2	0	2	31
04	Williamings, Emilia		3-6	0-0	4-6	1	6	7	4	10	5	3	0	0	20
12	Kelly, Symone		3-6	1-1	0-0	1	8	9	3	7	0	2	0	0	24
24	Lysius Cote, Kim		1-2	0-0	0-0	1	1	2	0	2	1	1	0	0	11
Team						0	2	2							
Totals			26-58	4-12	22-30	12	34	46	18	78	15	14	0	8	200
FG % 1st half: 14-29 48.3% 2nd half: 12-29 41.4% Game: 26-58 44.8% 8 Dances															
3FG % 1st half: 2-6 33.3% 2nd half: 2-6 33.3% Game: 4-12 33.3% 4															
FT % 1st half: 11-14 78.6% 2nd half: 11-16 68.8% Game: 22-30 73.3%															

FG % 1st Half: 14-29 48.3% 2nd half: 12-29 41.4% Game: 26-58 44.8%  
3FG % 1st Half: 2-6 33.3% 2nd half: 2-6 33.3% Game: 4-12 33.3%  
FT % 1st Half: 11-14 78.6% 2nd half: 11-16 68.8% Game: 22-30 73.3%

DEN 62 • 0-4, 0-0 Summit

15	Espinoza, Alecia	f	1-2	0-0	0-0	1	1	2	5	2	1	3	0	0	10
31	Spittell, Jesse	f	3-5	0-0	2-3	1	3	4	4	8	1	1	1	0	23
10	Van Ripper-Rose, Morg	g	2-10	2-8	0-0	0	7	7	2	6	1	2	0	0	27
11	Johnston, Jordan	g	5-10	3-3	2-2	2	1	3	2	15	3	1	0	1	26
22	Bradley, Paige	g	2-7	1-4	2-2	0	2	2	7	3	4	0	2	0	30
12	Poss, Jacqlyn	g	5-13	2-9	0-1	0	3	3	12	3	3	0	1	0	30
20	Morgan, Ciera		0-1	0-0	0-0	0	1	1	2	0	2	1	0	0	15
23	Burroughs, Kaila		0-4	0-0	4-4	0	1	1	1	4	0	0	0	0	12
24	Lee, Tamara		2-2	1-1	1-2	0	1	1	0	6	0	0	0	0	3
32	Bryant, Tori		0-1	0-0	0-0	0	0	0	0	0	0	0	0	1	6
06	Queen, Avery		0-0	0-0	0-0	0	1	1	3	0	0	0	0	1	9
45	Alt, Jordyn		0-2	0-0	2-2	1	3	4	3	2	0	0	0	0	9
Team						0	0	0							
Totals			20-57	9-25	13-16	5	24	29	27	62	14	15	2	5	200

FG % 1st Half: 11-29 37.9% 2nd half: 9-28 32.1% Game: 20-57 35.1%  
3FG % 1st Half: 4-12 33.3% 2nd half: 5-13 38.5% Game: 9-25 36.0%  
FT % 1st Half: 1-1 100.0 2nd half: 12-15 80.0% Game: 13-16 81.3%

Officials: Rachel Monroe, Kevin Kizewski, Michelle Kramer  
Technical fouls: SIEW-None. DEN-None.  
Attendance: 514

Score by periods				1st	2nd	Total
SIEW				41	37	78
DEN				27	35	62

#36

2 Denver.....41  
Wyoming.....82

Nov. 21- Laramie, Wyo. (Arena Auditorium)

Official Basketball Box Score -- Game Totals -- Final Statistics  
DEN vs Wyoming Cowgirls  
11/21/14 7 p.m. at LARAMIE, Wyo.

DEN 41 • 0-2

#	Player	Total		3-Ptr		Rebounds		PF	TP	A	TO	Blk	Stl	Min	
		FG	F-GA	FG	F-GA	FT	FT-A								
15	Alecia Espinoza	f	2-6	0-0	0-0	2	3	5	4	0	5	1	0	23	
22	Paige Bradley	f	0-10	0-4	0-0	2	1	3	1	0	1	2	0	1	26
31	Jesse Spittell	c	3-9	0-0	4-4	5	3	8	1	10	1	1	1	0	27
10	Morg Van Ripper-Rose	c	2-7	0-3	0-1	0	2	2	1	4	0	3	0	1	20
11	Jordan Johnston	g	1-4	0-2	0-0	0	1	1	1	2	0	0	0	0	16
12	Jacqlyn Poss		1-4	0-2	0-0	0	0	0	0	2	0	0	0	0	16
20	Ciera Morgan		1-5	0-0	2-2	1	4	5	2	4	1	1	0	0	21
23	Kalia Burroughs		3-4	1-1	2-2	0	1	1	3	9	0	1	0	0	20
24	Tamara Lee		0-2	0-0	0-0	0	0	0	0	0	1	1	0	0	8
32	Tori Bryant		1-2	0-0	0-0	0	1	1	0	2	0	0	0	1	3
06	Avery Queen		1-1	0-0	0-0	0	1	0	1	0	2	0	0	0	6
45	Jordyn Alt		1-5	0-2	0-0	0	2	2	3	2	0	1	0	0	14
Team						2	1	3							
Totals			16-59	1-14	8-9	13	19	32	17	41	4	15	4	2	200

FG % 1st Half: 5-31 16.1% 2nd half: 11-28 39.3% Game: 16-59 27.1%  
3FG % 1st Half: 1-9 11.1% 2nd half: 0-5 0.0% Game: 1-14 7.1%  
FT % 1st Half: 6-7 85.7% 2nd half: 2-2 100.0 Game: 8-9 88.9%

Wyoming Cowgirls 82 • 2-0

#	Player		Total		3-Ptr		Rebounds					PF	TP	A	TO	Blk	Stl	Min
			FG	F-GA	FG	F-TA	Off	Def	Total									
04	WOODWARD, Kayla	f	6-12	2-6	4-4	2	10	12	1	18	1	2	0	1	26	0	0	
33	COTTON, Bailee	f	4-10	0-0	0-0	4	0	4	0	8	3	1	0	0	20	0	0	
45	RAIDER, Kaylie	c	5-5	0-0	1-2	1	2	3	1	11	3	0	2	1	18	0	0	
10	DENT, Marquelle	c	4-10	0-2	3-3	2	4	6	2	11	7	1	0	2	25	0	0	
11	MILETO, Katlynn	g	3-9	1-5	1-1	0	0	0	2	8	2	1	0	0	22	0	0	
05	DAVIS, Jasmine		0-3	0-0	0-0	3	0	3	2	0	1	0	0	0	16	0	0	
13	ROBERTS, Liv		2-4	1-2	0-0	1	3	4	3	5	0	1	0	0	11	0	0	
14	BAKER, Natalie		1-4	0-2	2-2	3	3	6	0	4	2	1	0	0	17	0	0	
22	KELLEY, Jordan		2-5	0-2	4-4	1	1	2	0	8	3	2	0	2	17	0	0	
24	SNOODGRASS, Skyler		1-3	1-2	0-0	0	0	0	0	0	0	0	0	0	10	0	0	
01	SIBREL, Jordan		1-1	0-0	1-2	2	1	3	0	3	0	1	0	0	16	0	0	
28	CAMPBELL, Marleah		1-5	0-3	1-1	0	1	1	1	3	0	0	0	0	8	0	0	
	Team					3	6	9			1							
Totals			30-60	5-24	17-19	22	31	53	12	82	22	11	2	7	200	0	0	

BOX SCORES

7 Missouri-Kansas City.....66  
Denver.....74

8 Air Force .....66  
Denver.....107

9 Denver.....61  
Colorado State.....81

Dec. 6- Denver, Colo. (Magness Arena)

Dec. 8- Denver, Colo. (Magness Arena)

Dec. 11- Fort Collins, Colo. (Moby Arena)

Official Basketball Box Score -- Game Totals -- Final Statistics  
UMKC vs Denver  
12/6/14 1:00 PM MST at Denver, Colo. (Magness Arena)

UMKC 66 • 2-6

		Total	3-Ptr		Rebounds										
##	Player		FG-FGA	FG-FGA	FT-FTA	Off	Def	Tot	PF	TP	A	TO	Bk	Stl	Min
20	White, Calli	f	6-12	2-7	4-4	0	3	3	2	18	2	2	0	1	36
41	Husa, Paige	c	0-2	0-0	0-0	0	1	1	0	0	0	1	0	0	6
10	Washington, Aries	g	3-6	0-0	2-3	2	1	3	2	8	4	2	1	1	28
13	Leathers, Taylor	g	1-7	0-3	0-0	3	3	6	3	2	0	2	0	0	26
22	Wadron, Samantha	g	6-10	2-4	0-1	3	2	5	4	14	0	0	0	1	33
03	Bone, Sierra	g	0-0	0-0	0-0	0	0	0	0	0	0	0	0	0	2
11	Collins, Justice	g	0-0	0-0	0-0	0	0	0	0	0	0	0	0	0	4
12	Hardiek, Lexis	g	0-0	0-0	0-0	0	0	0	0	0	0	0	0	0	2
15	Roof, Chandler	g	3-9	1-2	2-2	2	5	7	4	9	1	0	1	1	28
21	Mitchell, Grace	g	2-3	0-0	4-5	2	3	5	3	8	0	3	0	1	11
23	Dudding, Lauren	g	1-2	1-2	0-0	1	2	3	0	3	0	0	0	0	8
24	Strickland, Taylor	g	0-0	0-0	0-0	0	0	0	1	0	0	1	0	0	2
32	Law, Kiana	g	1-9	0-0	2-2	1	2	3	2	4	0	0	0	0	14
	Team					0	1	1							
	Totals		23-60	6-18	14-17	14	22	36	21	66	7	12	2	5	200

FG % 1st Half: 6-28 21.4% 2nd half: 17-32 53.1% Game: 23-60 38.3%  
3FG % 1st Half: 1-6 16.7% 2nd half: 5-12 41.7% Game: 6-18 33.3%  
FT % 1st Half: 5-7 71.4% 2nd half: 9-10 90.0% Game: 14-17 82.4%

Denver 74 • 1-6

##	Player	Total	3-Ptr		Rebounds				PF	TP	A	TO	Bk	Stl	Min
		FG-FGA	FG-FGA	FT-FTA	Off	Def	Tot								
15	ESPINOZA, Alecia	f	3-5	1-1	0-0	4	8	12	2	7	1	3	0	0	36
31	SPITTEL, Jesse	g	2-8	0-0	2-2	5	2	7	1	6	0	1	0	0	14
10	VAN RIPER-ROSE, Morg	g	3-9	1-6	4-5	1	3	4	3	11	6	2	0	3	39
11	JOHNSTON, Jordan	g	2-10	1-6	1-2	1	3	4	0	6	0	2	3	0	27
22	BRADLEY, Paige	g	3-9	1-3	3-5	1	3	4	3	10	6	1	0	0	28
12	POSS, Jacqlyn	g	4-8	1-2	0-0	1	0	1	3	9	2	0	0	0	13
20	MORGAN, Ciera	g	0-1	0-0	2-2	0	0	0	0	2	1	1	0	0	13
24	LEE, Tamara	g	2-2	2-2	0-0	0	1	1	2	6	0	0	0	0	1
32	RYANT, Tori	g	0-0	0-0	0-0	0	0	0	0	0	0	0	0	0	1
40	QUEEN, Avery	g	1-1	0-0	0-0	0	0	0	1	2	0	0	0	0	7
45	ALT, Jordyn	g	5-9	0-0	5-6	5	5	10	4	15	1	2	0	0	21
	Team					1	0	1							
	Totals		25-62	7-20	17-22	19	25	44	19	74	17	12	3	3	200

FG % 1st Half: 14-36 38.9% 2nd half: 11-26 42.3% Game: 25-62 40.3%  
3FG % 1st Half: 5-13 38.5% 2nd half: 2-7 28.6% Game: 7-20 35.0%  
FT % 1st Half: 8-10 80.0% 2nd half: 9-12 75.0% Game: 17-22 77.3%

Officials: Greg Small, Marty Cook, Katie Ressie  
Technical fouls: UMKC-None. Denver-None.  
Attendance: 629

Score by periods	1st	2nd	Total
UMKC	18	48	66
Denver	41	33	74

Last FG - UMKC 2nd-00:52, DEN 2nd-00:52.  
Largest lead - UMKC None, DEN by 26 2nd-19:39.  
UMKC led for 00:00, DEN led for 38:18. Game was tied for 01:29.

10 Denver.....63  
Weber State.....65

11

12

Dec. 15- Ogden, Utah (Dee Events Center)

Official Basketball Box Score -- Game Totals -- Final Statistics  
DEN vs Weber State  
12/15/14 12:00 p.m. at Ogden, Utah (Dee Events Center)

DEN 63 • 2-8

##	Player	Total	3-Ptr	Rebounds	PF	TP	A	TO	Bk	Stl	Min				
		FG-FGA	FG-FGA	FT-FTA	Off	Def	Tot								
11	Johnston, Jordan	f	3-9	2-4	2-2	0	4	4	2	10	2	6	0	2	28
15	Espinoza, Alecia	f	4-9	0-0	0-0	2	5	7	1	8	2	1	2	0	38
31	Spittel, Jesse	c	0-0	0-0	2-4	1	2	3	4	2	1	1	0	1	22
10	Van Riper-Rose, Morg	g	6-14	4-8	0-0	0	3	3	1	16	2	0	0	1	38
22	Bradley, Paige	g	6-13	3-3	4-4	0	3	3	1	19	7	4	0	1	34
12	Poss, Jacqlyn	g	3-3	0-0	2-2	1	0	1	3	8	1	3	0	0	13
23	Burroughs, Kaila	g	0-4	0-0	0-0	1	1	2	1	0	0	0	1	1	6
40	Queen, Avery	g	0-0	0-0	0-0	1	0	1	0	0	0	0	0	0	5
45	Alt, Jordyn	g	0-1	0-0	0-2	1	1	2	4	0	0	2	0	0	16
	Team					2	1	3							
	Totals		22-53	9-15	10-14	9	20	29	17	63	14	18	2	6	200

FG % 1st Half: 13-27 48.1% 2nd half: 9-26 34.6% Game: 22-53 41.5%  
3FG % 1st Half: 8-11 72.7% 2nd half: 1-4 25.0% Game: 9-15 60.0%  
FT % 1st Half: 7-8 87.5% 2nd half: 3-6 50.0% Game: 10-14 71.4%

Weber State 65 • 5-5

#	Player		Total		3-Ptr		Rebounds				PF	TP	A	TO	Bk	Stl	Min	
			FG	FGA	FG	FGA	FT	FTA	Off	Def								Tot
03	CARPENTER, Jalen	f	5	9	0	0	2	2	1	2	3	12	1	2	1	1	25	
12	SHAHID-MARTIN, Z	f	6	11	0	2	3	4	1	3	4	3	15	1	1	2	31	
04	QUINN, Kallie	g	3	12	1	8	4	5	4	3	7	0	11	5	3	0	32	
22	DUNBAR, Brittney	g	1	3	0	1	0	0	2	2	4	2	2	4	1	1	23	
34	OKOYE, Regina	g	1	5	0	0	1	2	1	5	6	4	3	1	5	1	24	
01	ADAMS, Jocelyn	g	5	6	0	0	4	4	3	5	8	1	14	0	0	0	21	
05	AVERETTE, Brianna	g	2	7	0	0	4	4	3	1	4	1	8	5	2	0	29	
15	LOUGH, Carlee	g	0	2	0	0	0	0	0	0	0	0	0	2	1	5	5	
21	TOURE, Sira	g	0	1	0	0	0	0	0	1	1	0	0	0	1	0	8	
23	TOUSSAINT, Timisha	g	0	1	0	0	0	0	0	0	0	0	0	0	0	0	1	
32	WOOTEN, Cece	g	0	0	0	0	0	0	0	0	0	0	0	0	0	0	1	
	Team								0	2	2							
	Totals		23	57	1	11	18	21	15	24	39	15	65	17	17	6	11	200

FG % 1st Half: 12-31 38.7% 2nd half: 11-26 42.3% Game: 23-57 40.4%  
3FG % 1st Half: 0-5 0.0% 2nd half: 1-6 16.7% Game: 1-11 9.1%  
FT % 1st Half: 4-4 100.0 2nd half: 14-17 82.4% Game: 18-21 85.7%

Officials: Lisa Jones, Tiffany Bird, Kimberly Hobbs  
Technical fouls: DEN-None. Weber State-None.  
Attendance: 3100

Score by periods	1st	2nd	Total
DEN	41	22	63
Weber State	28	37	65

Last FG - DEN 2nd-03:27, WSU 2nd-00:07.  
Largest lead - DEN by 16 1st-05:18, WSU by 2 2nd-00:07.  
DEN led for 35:41, WSU led for 00:41. Game was tied for 03:31.

AF 66 • 1-8

##	Player	Total	3-Ptr	Rebounds	PF	TP	A	TO	Bk	Stl	Min				
		FG-FGA	FG-FGA	FT-FTA	Off	Def	Tot								
23	BENNETT, Dee	f	0-5	0-1	0-0	0	1	1	2	0	1	2	1	0	18
30	GAMBLE, Christina	f	1-3	0-0	0-0	0	1	1	5	2	0	1	0	0	13
03	BLAGOWSKY, Jimi	g	7-16	3-6	2-3	0	3	3	3	19	3	2	0	1	33
11	PORTER, Courtney	g	8-13	1-1	2-3	0	4	4	1	19	1	2	0	0	34
22	PHILPOT, Madeleine	g	0-3	0-0	0-2	1	2	3	0	2	0	0	0	0	25
04	GRAHAM, Sydney	g	0-1	0-1	0-0	0	0	0	0	0	0	1	0	0	10
14	LEWIS, Lindsey	g	5-9	1-1	2-4	0	6	6	4	13	1	1	0	0	27
24	CANTU, Sarah	g	1-5	0-0	5-6	0	0	0	0	7	2	1	0	0	18
31	BORGESSER, Maggie	g	0-0	0-0	0-0	0	0	0	0	0	0	0	0	0	7
32	JOHNSTON, Angela	g	1-3	0-0	4-6	0	2	2	0	6	1	1	0	0	12
34	BYRD, Missy	g	0-0	0-0	0-0	0	0	0	0	0	1	0	0	0	2
50	STIMELING, Lindsey	g	0-0	0-0	0-0	0	0	0	1	0	0	0	0	0	1
	Team					4	2	6							
	Totals		23-58	5-10	15-24	5	21	26	19	66	13	11	1	1	200

FG % 1st Half: 16-34 47.1% 2nd half: 7-24 29.2% Game: 23-58 39.7%  
3FG % 1st Half: 2-4 50.0% 2nd half: 3-6 50.0% Game: 5-10 50.0%  
FT % 1st Half: 1-5 20.0% 2nd half: 14-19 73.7% Game: 15-24 62.5%

DEN 107 • 2-6

##	Player	Total	3-Ptr	Rebounds	PF	TP	A	TO	Bk	Stl	Min				
		FG-FGA	FG-FGA	FT-FTA	Off	Def	Tot								
15	Espinoza, Alecia	f	4-5	0-0	2-2	5	7	12	3	10	1	4	1	1	22
31	Spittel, Jesse	f	2-5	0-0	1-2	3	2	5	1	5	0	1	0	0	17
10	Van Riper-Rose, Morg	g	11-17	10-13	0-0	0	7	7	1	32	4	0	1	1	28
11	Johnston, Jordan	g	2-7	0-2	0-0	1	1	2	1	4	1	1	0	1	14
22	Bradley, Paige	g	7-13	2-4	3-6	2	5	7	1	19	8	1	0	0	26
22	Poss, Jacqlyn	g	4-9	3-8	0-0	0	0	0	0	11	3	2	0	0	17
20	Morgan, Ciera	g	1-1	0-0	3-4	1	4	5	2	5	9	0	0	0	14
23	Burroughs, Kaila	g	2-4	1-2	2-3	0	0	0	0	7	0	0	0	0	5
24	Lee, Tamara	g	3-7	3-7	1-2	0	0	0	0	5	10	0	0	1	16
32	Bryant, Tori	g	0-1	0-0	0-0	1	1	2	1	0	0	0	0	0	3
40	Queen, Avery	g	0-2	0-0	0-0	1	1	2	3	0	0	0	0	0	16
45	Alt, Jordyn	g	2-5	0-0	0-0	6	8	14	2	4	0	2	0	0	22
	Team					1	0	1							
	Totals		38-76	19-36	12-19	21	36	57	20	107	26	11	3	3	200

FG % 1st Half: 16-36 44.4% 2nd half: 22-40 55.0% Game: 38-76 50.0%  
3FG % 1st Half: 8-18 44.4% 2nd half: 11-18 61.1% Game: 19-36 52.8%  
FT % 1st Half: 6-10 60.0% 2nd half: 6-9 66.7% Game: 12-19 63.2%

Officials: Roy Gulbeyan, Randy Campbell, Josh Rombach  
Technical fouls: AF-None. DEN-None.  
Attendance: 242

Score
-------

## MEDIA INFORMATION

### Game Notes:

Media members can receive the Pioneer Basketball game notes via e-mail by contacting Sports Information Director Brad Thompson at [brad.m.thompson@du.edu](mailto:brad.m.thompson@du.edu).

### Credentials:

Media interested in obtaining season or game credentials should apply online at [www.DenverPioneers.com/credential](http://www.DenverPioneers.com/credential) or contact Brad Thompson by e-mail ([brad.m.thomson@du.edu](mailto:brad.m.thomson@du.edu)), office phone (303-871-4990) or cell phone (440-897-8400).

### Interviews During The Week:

All interview requests must be arranged through Brad Thompson in the Denver Media Relations Office. Please contact Thompson to arrange interviews during the week. He can be reached via e-mail ([brad.m.thompson@du.edu](mailto:brad.m.thompson@du.edu)), office phone (303-871-4990) or cell phone (440-897-8400). Practice is open, but arrangements must be made in advance if you are planning on shooting B-roll footage. Coach Cremeans and Denver student-athletes are available for interviews on non-game days following practice or through special arrangements with Brad Thompson.

### Postgame Interviews:

Postgame interviews will be conducted at a designated site following a 10-minute cooling-off period. Denver head coach Kerry Cremeans and selected players will be available for interviews. Media requests (at home) for both Denver and opposing coaches and players should be made to the DU women's basketball SID. Opponent requests will be forwarded to the visiting SID. The Pioneer women's basketball locker room is closed to the media.

### Camera Procedures:

Photographers must work within the designated areas. Photographers may shoot from the right side of each end line of Magness Arena. Requests to photograph from any other location must be made in advance to the University of Denver Athletic Media Relations Department. The University of Denver reserves the right to accept or reject credential requests.

### Radio:

All radio stations wishing to broadcast from Magness Arena should contact the University of Denver Athletic Media Relations Office at least one week prior to the event. Space will be provided for the official radio station of the visiting team; others will be accommodated as space permits. Phone lines must be arranged for all stations in advance.

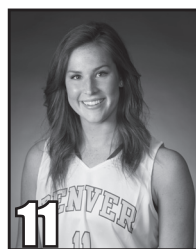
### Directions to DU:

Take I-25 to the South University Boulevard exit. Proceed south to the first stop light (Buchtel Boulevard). Go through the Buchtel Boulevard intersection to the next block south (Jewell Avenue). Take a right on Jewell and proceed west approximately one-half block to the east entrance to the Ritchie Center. Media parking is just east of Joy Burns Arena (the easternmost part of the Ritchie Center) in lot 401.

## RADIO/TV ROSTER



Morgan Van Riper-Rose  
Sr., Guard, 5-10  
Eden Prairie, Minn.



Jordan Johnston  
Sr., Guard, 5-10  
Waterloo, Iowa



Jacqlyn Poss  
So., Guard, 5-9  
Shoreview, Minn.



Alecia Espinoza  
So., Forward, 6-1  
Hacienda Heights, Calif.



Ciera Morgan  
Fr., Guard, 5-9  
Parker, Colo.



Paige Bradley  
Jr., Guard, 5-9  
The Woodlands, Texas



Kaila Burroughs  
Fr., Guard, 6-1  
St. Cloud, Minn.



Tamara Lee  
Fr., Guard, 5-8  
Edmond, Okla.



Jesse Spittel  
So., Forward, 6-2  
Yorba Linda, Calif.



Tori Bryant  
R-Fr., Forward, 6-0  
Brea, Calif.



Theresa Wirth  
Sr., Forward, 6-0  
Mesa, Ariz.



Avery Queen  
Fr., Forward, 6-2  
Boerne, Texas



Jordyn Alt  
Fr., Forward, 6-2  
North Oaks, Minn.



Kerry Cremeans  
Head Coach  
Third Season



Seth Kushkin  
Assistant Coach  
Third Season



Ashley Langford  
Assistant Coach  
Third Season



Molly Marrin  
Assistant Coach  
First Season



Wes Kitchens  
Director of Ops.  
Third Season