



PURDUE BOILERMAKERS

2024 VOLLEYBALL GAME NOTES

BIG

SID: Rachel Coe | coer@purdue.edu | Office: 765-496-7842 | Cell: 518-729-9960

900 John R. Wooden Drive, West Lafayette, IN 47907

2024 PURDUE VOLLEYBALL SCHEDULE

Overall Record: 16-5 (7-3 Big Ten)

Home: 7-2

Away: 5-2

Neutral: 4-1

AUGUST

30 K-State (BIG+)[^] W, 3-1

31 UMBC (BIG+)[^] W, 3-0

SEPTEMBER

1 UC Davis (BIG+)[^] W, 3-0

5 vs. California W, 3-1

6 at Utah W, 3-0

7 at Utah State (MWN) W, 3-0

13 vs. Houston⁺ W, 3-0

14 vs. #10 Kentucky⁺ W, 3-1

19 at #10 Kansas[#] L, 1-3

20 vs. #9 Creighton[#] L, 1-3

21 vs. Tulsa[#] W, 3-0

25 #4 PENN STATE (BTN)* L, 0-3

28 at #16 Minnesota (BTN)* W, 3-2

OCTOBER

4 at Northwestern (BIG+)* W, 3-1

6 MICHIGAN STATE (BTN)* W, 3-0

11 at #2 Nebraska (BTN)* L, 2-3

12 at Iowa (BIG+)* W, 3-1

17 UCLA (BIG+)* W, 3-2

19 INDIANA (Mackey Arena | BTN)* W, 3-0

23 OHIO STATE (BTN)* W, 3-0

26 #8 WISCONSIN (Mackey Arena | NBC)* L, 0-3

NOVEMBER

1 at Maryland (BTN)* 6:30 p.m.

2 at Rutgers (BIG+)* 7 p.m.

8 at Indiana (BIG)* 7 p.m.

10 MICHIGAN (BIG+)* 1 p.m.

14 RUTGERS (BIG+)* 6 p.m.

17 ILLINOIS (BTN)* 5 p.m.

21 at #3 Penn State (BTN)* TBD

23 #21 USC (BIG+)* 7 p.m.

27 at #10 Oregon (BTN)* 10:30 p.m.

29 at #RV Washington (BIG+)* TBD

All Times Eastern

* Big Ten match

[^] Stacey Clark Classic

+ SMU Doubletree Invitational

Jayhawk Classic

#11 PURDUE BOILERMAKERS

16-5 | 7-3 Big Ten

Coach: Dave Shondell (22nd season)

Record at Purdue: 474-231

VS

MARYLAND TERRAPINS

10-11 | 1-9 Big Ten

Coach: Adam Hughes (7th season)

Record at Maryland: 88-92

FRI. 11/1 - 6:30 PM ET - COLLEGE PARK, MD. - XFINITY CENTER PAVILION - BTN

SERIES HISTORY: 12-2 | LAST MEETING: W, 3-0 AT MARYLAND (11/18/23)

#11 PURDUE BOILERMAKERS

16-5 | 7-3 Big Ten

Coach: Dave Shondell (22nd season)

Record at Purdue: 474-231

VS

RUTGERS SCARLET KNIGHTS

5-16 | 0-10 Big Ten

Coach: Caitlin Schwehofer (5th season)

Record at Rutgers: 37-95

SAT. 11/2 - 7 PM ET - NEW BRUNSWICK, N.J. - JERSEY MIKE'S ARENA - BTN+

SERIES HISTORY: 17-0 | LAST MEETING: W, 3-0 AT RUTGERS

SCHEDULE BREAKDOWN

- Purdue begins its longest homestand of the season with four consecutive matches (two weeks) at home.
- The homestand comes after seeing 11 of the last 13 matches on the road.
- Purdue recently finished a stretch of five top-16 foes in six matches, which included three straight top-10 show-downs.
- Purdue has played 5 top-10 teams and own a 1-4 record vs. those foes, however all four losses are to teams currently in the top eight in the AVCA poll. Meanwhile, 50% of those losses are to top-3 teams.
- The schedule features **six** non-conference matchups vs. 2023 NCAA Tournament teams.
- A total of 12 matches this fall will come against teams ranked or receiving votes in the 2023 final poll.
- Purdue will play two matches in its historic **Mackey Arena**: vs. Indiana (10/19) for the Monon Spike trophy match and the following week vs. Wisconsin (10/26).
- The 2024 season will marks the **most road matches** in non-conference action since 2008, with Purdue at home for two matches in the month of September.
- The regular season will close with **four straight matches vs. teams ranked or receiving votes, with three on the road**: at #3 Penn State (11/21), vs. #16 USC (11/23), at #11 Oregon (11/27) and at receiving votes (RV) Washington (11/29).

SCOUTING THE MARYLAND TERRAPINS

- A strong serve team, Maryland leads the Big Ten in service aces by a large margin (164 aces, with second-most coming in at 139). Moreover, the team ranks #7 nationally with 2.13 aces per set.
- They are led by the national leader Samantha Schnitta's 58 aces. Schnitta also leads the team in points per set (4.36) and kills per set (3.30).
- Libero Lilly Gunter leads the team with 259 digs, good for #10 in the league.
- The Terps will be facing its sixth top-16 program since Big Ten play started with their match vs. Purdue.

SCOUTING THE RUTGERS SCARLET KNIGHTS

- The team is led by Alissa Kinkela's 3.39 kills per set and Avery Jesewitz's 2.05 kills per set. Kinkela is also one of the most efficient attackers, averaging a .229 clip.
- Middle Natalie Robinson owns a team-leading 1.33 blocks per set and a .246 attack %.
- As a team, the Knights are averaging a .183 attack % and 2.28 blocks per set. Meanwhile, opponents are held to a .235% and 2.19 blocks per set.
- Rutgers has pushed two Big Ten teams to five sets: vs. Iowa and at Michigan, both of which came in the opening weekend.

50 SEASONS

25 NCAA
TOURNAMENT
APPEARANCES

23 AVCA
ALL-AMERICANS

AVCA/Taraflex
Top-25 Coaches Poll (10/28)

			Previous
Rank	School	Record	Rank
1	Pittsburgh [51]	19-1	1
2	Nebraska [9]	20-1	2
3	Penn State [1]	20-1	3
4	Louisville	17-3	4
5	Stanford	16-3	5
6	Creighton	19-2	6
7	Wisconsin	15-4	8
8	Kansas	18-1	9
9	Texas	12-4	7
10	Oregon	16-3	11
11	Purdue	16-5	10
12	SMU	15-6	12
13	Arizona State	20-2	13
14	Kentucky	12-7	14
15	Minnesota	14-6	15
16	Georgia Tech	15-4	17
17	Baylor	13-6	23
18	TCU	14-5	18
19	Dayton	21-1	20
20	BYU	13-6	21
21	Southern California	14-6	16
22	Utah	16-4	21
23	Florida State	15-5	19
24	Florida	14-5	24
25	North Carolina	17-2	25

Receiving votes: Texas A&M 89; Washington 28; Marquette 22; Missouri 19; Michigan 15; South Dakota State 12; Arkansas 9; Virginia 5; UCLA 4

Purdue In The AVCA/Taraflex Poll

Date	Rank	Date	Rank
2023 Final	#13	W7 (10/14)	#10
2024 Preseason	#8	W8 (10/21)	#10
W1 (9/2)	#8	W9 (10/28)	#11
W2 (9)	#7	W10 (11/4)	
W3 (9/16)	#6	W11 (11/11)	
W4 (9/23)	#10	W12 (11/18)	
W5 (9/30)	#10	W13 (11/25)	
W6 (10/7)	#10	W14 (12/2)	
		Final	

Big Ten of the Week Awards

Player 9/2:	Eva Hudson
Setter 9/9:	Taylor Anderson
Defensive 9/16:	Raven Colvin
Defensive 10/7:	Ali Hornung

AVCA National Player of the Week

Player 9/2:	Eva Hudson
-------------	------------

RETURNING 2023 ALL-AMERICANS

- Purdue returns all three AVCA All-America honorees: junior Eva Hudson (second team), sophomore Chloe Chicoine (third team) and senior Raven Colvin (honorable mention).
- Hudson is the youngest Boilermaker to receive Second Team All-America honors since 1986.
- Chicoine's third team accolade was the highest-ever AVCA All-America honor by a Purdue newcomer.

PURDUE VOLLEYBALL'S ALL-TIME WINNINGEST HEAD COACH

- With the sweep vs. Michigan State on 10/6, HC Dave Shondell became the all-time winningest head coach in Purdue volleyball history, surpassing AVCA Hall of Famer Carol Dewey, with his 470th win.
- Shondell is one of two active head coaches in the Big Ten with as many wins at their institution (joined by John Cook) and is one of seven among Power 4 programs.

PROGRAM RECORDS FALLING

- Since Big Ten play has started, nine program records have been set or tied: two Big Ten regular-season match and Purdue home attendance record (14,876 fans vs. Indiana, 10/19 and again vs. #8 Wisconsin, 10/26); Longest match (2:53 at #2 Nebraska); Most team aces in a 5-set match during the rally-scoring era (17 at then-#16 Minnesota); Most aces by an individual in a 5-set match during the rally-scoring era (7 by Raven Colvin at then-#16 Minnesota); Most aces by a freshman (6 by Ryan McAleer); Most team digs in a 3-set match in the current 25-point rally scoring (71 vs. Michigan State); Most wins in program history (Dave Shondell, 470).

PURDUE: QUICK HITS

- Purdue has won 7 of its last 9 matches. Its only losses come to top-10 programs.
- The team is #10 in the nation in blocks per set (2.83) and #16 in hitting % (.270).
- Eva Hudson and Chloe Chicoine were named to the **AVCA Player of the Year Watch List in September**.
- Three Boilers are averaging **2.5 kills per set** or higher: Hudson (4.45), Chicoine (3.21) and Colvin (2.53).
- Purdue is 52-24 in sets won this season.
- Purdue's hitting % (.270) would rank as #4 in Purdue single-season history if things were to end today. It would be **just the second time this century the Boilers have hit so efficiently**.
- Raven Colvin is #5 in the nation in blocks per set (including #1 in the Big Ten with 121 total blocks). Her 1.59 blocks per set would rank as #2 in Purdue single-season history if the season were to end today.
- Freshman DS Ryan McAleer has recorded a perfect reception % in 14 matches. Moreover, she recorded six aces at then-#16 Minnesota, tying as the most-ever by a Purdue freshman. She set a new career-high 15 digs vs. Indiana (10/19).
- Eva Hudson has stepped up in the biggest matches of the season. She set a season-high 26 kills on a .349% at #2 Nebraska and nearly had an errorless match at now-#9 Kansas, committing just one attack error in the final points of the match. This season, she is averaging 4.40 kills per set and 4.82 points per set this season.

NCAA SELECTION COMMITTEE TOP-16 REVEAL

- Purdue was slotted at #12 in the NCAA Selection Committee's Top-16 reveal on Sunday, which means if the season were to end today, the Boilermakers would host NCAA First and Second Rounds.
- The Boilermakers have taken on six other teams so far in the top-16, owning a 2-5 record vs. those teams and will play three more matches against teams in the committee's sights.

PURDUE VS TOP-25 TEAMS

- The Boilermakers had a stretch of playing six ranked opponents in a 10 match span, all of which are currently ranked in the top-15.
- Purdue Match Highs: .311% at #2 Nebraska | 15 blocks at #2 Nebraska
- The Boilers totaled 79 digs at then-#16 Minnesota, a season-high, along with 17 aces, a program record-tying number in a Big Ten match.

CHICOINE'S ERRORLESS PERFORMANCE VS. INDIANA

- Chloe Chicoine went errorless on the attack vs. Indiana (10/19), recording 12 kills on 30 attacks for a .400 clip.
- The last time a Purdue outside hitter went errorless with a 30 attack minimum was All-American Grace Cleveland vs. Indiana in 2021.
- In fact, Chicoine is just the third Boilermaker in the last 10 years to go errorless on the attack with a 30-attempt minimum. In addition to Cleveland's match, she is joined by Sherridan Atkinson's.
- She is the only outside hitter in the Big Ten to go errorless on the attack in league action this year, and is just the second overall this season, joined by Oregon's Mimi Colyer's 12-0-33 (.364%) show vs. San Diego on Sept. 14.
- Meanwhile, she went errorless in seven of eight sets last week (vs. UCLA and vs. Indiana).

HUDSON: STRONG STARTS IN SET 1

- She's gone errorless in the opening game in 9 of 21 matches, including four of six top-25 matchups.

PURDUE IN 5-SET MATCHES

- Purdue is 11-6 in five-set matches over the last three seasons, including 2-1 in 2024.
- The Boilermakers have gone errorless in the last two fifth sets: 13-0-27 at #2 Nebraska and 9-0-20 vs. #RV UCLA).
- The Boilers have hit over .400 in every 5th set this season (.429 at #16 Minnesota, .481% at #2 Nebraska, .450 vs. #RV UCLA).

PURDUE AT #2 NEBRASKA

- Purdue's 2-hour 53-minute five-setter at #2 Nebraska was the longest match in known-program history (research available through 1999). The second-longest match in program history was also last year's five-setter vs. #2 Nebraska, which clocked in at 2 hours and 51 minutes.
- The Boilermakers held match point, 14-13 and went errorless in Set 5 (13-0-27) for a .481 set clip.
- In addition to Purdue edging Nebraska in efficiency, .311% vs. .242%, Purdue blew Nebraska's previous opponents away as the most efficient team the Huskers have faced (previous opponent-high: SMU's .242% on 9/3/24).
- Purdue out-blocked Nebraska, 15-5, holding the Huskers to a season-low. Raven Colvin was on 11 of those 15 blocks.
- Eva Hudson and Chloe Chicoine went off, combining for 48 kills and each hitting over .300% in the match.
- The Achilles heel for Purdue was service errors, tallying 19 errors in the match, including four in Set 5.

14,870 STRONG: SETTING A BIG TEN-MATCH ATTENDANCE RECORD

- Purdue set the Big Ten regular-season match attendance record, the state of Indiana attendance record for volleyball, and the Purdue volleyball home attendance record vs. Indiana (10/19) and then tied it a week later vs. #8 Wisconsin (10/26).
- Purdue eclipsed the old attendance record for a regular-season match between two Big Ten opponents, which stood at 10,927 (#23 Illinois at #2 Minnesota, 10/16/04).
- The matches sold out a month in advance (sold out on Friday, September 20).
- The last time Purdue volleyball played in Mackey Arena was in 2016 vs. Indiana, which also happened to be the Monon Spike match in front of a crowd of 8,240 fans.
- Last week's match was **the second-largest crowd in women's volleyball this year**.
- The last and only time Purdue and Wisconsin met in Mackey Arena was in 2008, which the attendance of 10,570 fans was

Big Ten Individual Rankings

Total Blocks No. 1 Raven Colvin (121)
Total Assists No. 2 Taylor Anderson (818)
Total Points No. 3 Eva Hudson (369.5)
Kills Per Set No. 3 Eva Hudson (4.45)
Blocks Per Set No. 4 Raven Colvin (2.83)
Digs Per Set No. 4 Ali Hornung (3.89)
Total Kills No. 2 Eva Hudson (338) No. 14 Chloe Chicoine (244)
Total Attacks No. 2 Eva Hudson (937) No. 9 Chloe Chicoine (750)
Hitting % No. 7 Raven Colvin (.368)

Big Ten Team Rankings

No. 1 Attacks Per Set (35.18)
No. 3 Total Blocks (215)
No. 4 Total Kills (1052)
No. 1 Digs Per Set (15.30)
No. 2 Receive % (94.7)
No. 2 Points Per Set (18.29)
No. 4 Assists Per Set (12.86)
No. 3 Kills Per Set (13.84)
No. 4 Hitting % (.270)

NCAA 2024 Attendance Rankings

Attendance	Match, Date
1. 15,084	Marquette at Wisconsin, 9/17
2. 14,876	Indiana at #10 Purdue, 10/19
14,876	#8 Wisconsin at #10 Purdue, 10/26
3. 14,126	Nebraska at Louisville, 9/22
4. 14,035	Texas vs. Wisconsin, 9/1
14,035	Stanford vs. Minnesota, 9/1

2024 Indiv. National Rankings

Blocks Per Set No. 5 Raven Colvin (1.59)
Total Blocks No. 5 Raven Colvin (121)
Total Assists No. 27 Taylor Anderson (818)
Assists Per Set No. 11 Taylor Anderson (10.76)
Hitting % No. 48 Raven Colvin (.368)
Attacks Per Set No. 14 Eva Hudson (11.86)
Total Kills No. 26 Eva Hudson (338)
Kills Per Set No. 16 Eva Hudson (4.45)
Career Blocks Per Set No. 3 Raven Colvin (1.38)
Career Total Blocks No. 4 Raven Colvin (579)
Career Kills Per Set No. 9 Eva Hudson (4.37)
Career Attacks Per Set No. 8 Eva Hudson (11.86)

second-largest crowd to witness a Big Ten regular-season match in conference history.

SHONDELL QUOTE: "It's time to take our Boilermakers back into Mackey Arena. The opportunity to grow our program, as well as our sport, is essential right now. Holloway is a special home, but for a few matches this fall, our team and Boilermaker Nation, must make Mackey Arena the best home-court environment in the land."

HISTORY OF ATTENDANCE SUCCESS

- Purdue set a previous NCAA women's volleyball attendance record in Mackey Arena on Oct. 29, 1985 with 10,645 fans watching Purdue defeating Western Michigan 3-1 (11-15, 15-6, 15-5, 15-2). The event was dubbed "Pac Mac" with promotions that allowed patrons to attend for just \$1.

TOP-10 TAKEDOWNS

- In every season for the last 10 years, Purdue has picked up at least one top-10 victory. In fact, Purdue's won 20 top-10 showdowns since 2015 (last: vs. #10 Kentucky, 3-1 on 9/14/24).

PURDUE IN THE NATIONAL RANKINGS: 119 CONSECUTIVE WEEKS

- The program has been ranked for 119 consecutive weeks (since preseason 2017), the longest active streak in Purdue Athletics.
- Since the 2021 spring season, Purdue has been ranked among the top-10 for 35 weeks.
- The Boilermakers' history of excellence includes 54 of the last 70 weeks ranked among the top-15 (77%).
- Purdue has spent the entirety of the 2024 season in the top-11 (includes preseason poll).

PURDUE ATHLETICS INVESTING IN THE PROGRAM

- New this season, Purdue will play two matches in the history Mackey Arena.
- Holloway Gymnasium is home to a **brand-new Taraflex court**.
- The team received new **updates to their locker room, player lounge and film room**.
- A new \$11 million Purdue **Student-Athlete Dining Facility** opened on July 31.
- The **weight room** used by volleyball, men's and women's basketball has undergone construction and entirely new equipment has been purchased.

RECAP: #10 PURDUE VS. UCLA (23-25, 27-25, 25-20, 19-25, 15-11)

- Purdue ground out a 3-2 win vs. UCLA in the first-ever regular season meeting
- The Boilermakers posted a Big Ten match season-high .325 hitting %, which included an errorless Set 5's .450%.
- Six individual season and/or career-highs were set along the way.
- Taylor Anderson led with 51 assists, 12 digs, five blocks and a career-high seven kills. She was responsible for three kills and a block assist in Set 5, including a block and kill on back-to-back points for the 12-8 advantage. It was the fourth match this season she's reached 50 assists and the seventh match with a double-double.
- Eva Hudson led the attack with 24 kills on 56 attacks with two errors (.393%). The outside hitter tied a career-high 17 digs in the outing, the most since her freshman season (17 vs. Illinois, 9/30/22), and went errorless in three of the five sets.
- The Boilermakers came back to steal Set 2 in its largest set comeback of the season to win it 27-25. The 10-2 run to end the set included five UCLA set points, marking the second time this season that the Boilermakers have erased multiple set points during its comeback.
- Raven Colvin finished with a team-leading hitting % (.556) while registering 17 kills and 2 errors on 27 attacks and six total blocks (1-5). She came just two kills shy of tying her career-high and moved into #2 all-time in Purdue career blocks.
- Chicoine was errorless in four of the team's five sets as she finished the night with 15 kills and three attack errors on 52 swings (.231%).

2024 Team National Rankings

No. 10 Blocks Per Set (2.83)
No. 16 Hitting % (.270)
No. 19 Kills Per Set (13.84)
No. 20 Total Blocks (215.0)
No. 21 Assists Per Set (12.86)



School	Big Ten Record	Overall Record	Overall Pct.
Nebraska	10-0	20-1	.952
Penn State	10-0	20-1	.952
Wisconsin	9-1	15-4	.789
Oregon	8-2	16-3	.842
Purdue	7-3	16-5	.762
Minnesota	7-3	14-6	.700
Washington	6-4	16-4	.800
Michigan	6-4	16-5	.762
Illinois	6-4	14-6	.700
USC	6-4	14-6	.700
UCLA	4-6	10-9	.526
Indiana	3-7	10-10	.500
Iowa	3-7	9-13	.409
Northwestern	2-8	4-14	.222
Maryland	1-9	10-11	.476
Ohio State	1-9	8-12	.400
Michigan State	1-9	8-13	.381
Rutgers	0-10	5-16	.238

Wins vs. Top-10 Opponents

Last 8 Years (2017-present)

Opponent	Score	Date
vs. #10 Kentucky	3-1	9/14/24
vs. #3 Wisconsin	3-2	11/17/23
vs. #8 Minnesota	3-0	9/23/22
vs. #3 Ohio State	3-2	9/24/21
vs. #3 Wisconsin	3-1	10/31/21
at #4 Wisconsin	3-1	11/12/21
at #8 Minnesota	3-1	11/14/21
vs. #5 BYU	3-2	12/9/21
at #10 Penn State	3-1	3/5/21
at #9 Ohio State	3-1	3/26/21
at #9 Ohio State	3-1	3/27/21
vs. #5 Nebraska	3-2	10/26/19
at #4 Penn State	3-2	10/27/18
vs. #9 Creighton	3-1	9/8/17
vs. #5 Minnesota	3-1	11/10/17
vs. #10 Wisconsin	3-0	11/11/17
vs. #10 Michigan State	3-1	11/24/17
vs. #9 Stanford	3-2	9/9/16
vs. #4 Kansas	3-1	9/16/16
vs. #3 Minnesota	3-2	11/21/15

Top-25 Wins in Holloway

By Most Recent (Since 2011)

Opponent	Score	Date
vs. #3 Wisconsin	3-2	11/17/2023
vs. #16 Penn State	3-2	11/5/2023
vs. #19 Kentucky	3-2	9/9/2023
vs. #8 Minnesota	3-0	9/23/2022
vs. #3 Wisconsin	3-1	10/31/2021
vs. #15 Penn State	3-2	10/17/2021
vs. #3 Ohio State	3-2	9/24/2021
vs. #22 Tennessee	3-0	9/18/2021
vs. #16 Marquette*	3-1	12/7/2019
vs. #23 Michigan	3-0	11/23/2019
vs. #5 Nebraska	3-2	10/26/2019
vs. #10 Michigan State	3-1	11/24/2017
vs. #10 Wisconsin	3-0	11/11/2017
vs. #13 Michigan	3-1	10/28/2016
vs. #4 Kansas	3-1	9/16/2016
vs. #3 Minnesota	3-2	11/21/2015
vs. #18 Illinois	3-2	10/25/2015
vs. #22 Ohio State	3-2	10/18/2014
vs. #19 Michigan State	3-2	11/30/2013
vs. #6 Nebraska	3-0	11/22/2013
vs. #15 Wisconsin	3-2	11/2/2013
vs. #12 Ohio State	3-0	10/4/2013
vs. #21 Illinois	3-2	9/29/2012
vs. #21 Northern Iowa	3-0	8/24/2012

*NCAA Tournament match

The Snapshot: Last Week in Review

NATIONAL RANKINGS

Attacks per Set
No. 2 | Eva Hudson (16.83)

Kills Per Set
No. 7 | Eva Hudson (6.00)

Kills Per Set
No. 8 | Eva Hudson (6.50)

Team Blocks Per Set
No. 18 | 3.17

AMONG THE BIG TEN

No. 1 | Kills Per Set (Eva Hudson, 6.00)

No. 1 | Points Per Set (Eva Hudson, 6.50)

No. T-4 | Digs Per Set (Ali Hornung, 4.00)

No. 5 | Blocks per Set (Lourdes Myers, 1.83)

No. 6 | Digs Per Set (Chloe Chicoine, 3.83)

No. 1 | Team Digs Per Set (17.50)

No. 2 | Team Opponent Hitting % (.148)

No. 2 | Team Blocks Per Set (3.17)

LAST WEEK'S NEED-TO-KNOW

- Purdue went 1-1 last week, picking up a sweep vs. Ohio State before falling in three to #8 Wisconsin in Mackey Arena.
- Not only did Purdue tie its own Big Ten regular-season match attendance record set just a week ago, but Purdue now holds two of the top three largest crowds to witness a women's collegiate volleyball match this year with 14,876 fans in attendance vs. Indiana and vs. #8 Wisconsin in Mackey Arena.
- The sold-out Mackey Arena also means Purdue now holds three of the top-four attendances in league history for two Big Ten teams battling in the regular season (Purdue vs. Wisconsin on 10/17/2008 held 10,570 fans in Mackey Arena).
- Eva Hudson led the league in both kills per set and points per set last week, posting 19 kills vs. Ohio State and 17 vs. Wisconsin.
- Purdue and Ohio State needed extra points in two of the three sets played.

ACED IT: 17 ACES AT #16 MINNESOTA

- The team's 17 service aces included five in the fifth set. Three came during libero Julia Kane's serving tear, which was a career-high.
- Raven Colvin tied a program record in five-set matches with her seven service aces.
- Freshman Ryan McAleer generated six aces, the third freshman in Purdue history, including the only one this century to do so (joining Lauri Grimes and Brooke White, both accomplished in 1993).
- The Boilermakers' 17 aces were the most by any team in the nation last week and are the most by a Big Ten team this season.

SMOOTH & STEADY: SETTER TAYLOR ANDERSON

- She leads not only all Big Ten setters with 73 blocks this season (second-most is 54 by USC's Mia Tuaniga), but **all setters at Power 4 programs. In perspective, Anderson also owns more blocks than Big Ten middles** Andi Jackson (Nebraska) and Taylor Trammell (Penn State).
- Anderson has set Purdue to seven matches over .300%, including .311% at #2 Nebraska, .310 vs. #10 Kentucky and .450 vs. UC Davis.
- Anderson has gotten more aggressive on the attack compared to her freshman season, averaging .61 kills per set compared to .31 from last season (35 kills in 2023 vs. 44 in 2024). In fact, her numbers are up in virtually every category including digs per set (1.97 vs. 2.29), assists per set (9.88 vs. 10.76) and blocks (.85 vs. .96).
- She set a season-high 13 digs alongside 47 assists in the four-set victory at Northwestern (10/4).
- Has posted 7 or more blocks four times this season (last: 7 at #2 Nebraska)
- 40 or more assist in a match this season: 10
- 45 or more assists in a match this season: 7
- 50 or more assists in a match this season: 4
- Double-doubles this season: 8 (including five of the last nine matches)

ON A MISSION: RAVEN COLVIN

- No player in DI** is taking care of business like Colvin for blocks, ranking #5 in blocks per set (1.59). She led the nation in blocks for the first 4 straight weeks and ranked among the top-12 in hitting % until Week 7.
- For 12 of the last 16 matches, Colvin has hit .308% or higher.
- She set a **career-high 19 kills** at #16 Minnesota (9/28) alongside a Purdue 5-set record-tying 7 aces in a five-set match.
- She is hitting, blocking and serving more efficiently than ever before and leads the team in aces.
- Despite being halfway through the season, she has now recorded more aces than the entirety of the 2023 season (28 vs. 26).
- Colvin has **increased her hitting efficiency** compared to 2023: .368% vs. .280%.
- The senior is #5 in the nation in blocks per set (including #1 in the Big Ten) with 1.59 per set, which would tie the program record if the season were to end today, while her .368 hitting % would rank #4 in Purdue single-season history. To put in perspective, First Team All-American Stephanie Lynch is the only Boilermaker to be as good in both categories in a season.
- She's hit **.440% or higher in eight of 10 consecutive matches (9/7-10/6)**.
- Colvin ranks #2 in Purdue history in both career total blocks and block assists. She is one of just two blockers in program history to post as many this century (last: record-holder Stephanie Lynch, 2005-08).
- She also ranks #2 in Purdue history and the only Boilermaker this century to record 1.38 career blocks per set (record holder: Donna Gill, 1.49 blocks/set, 1991-92). The Big Ten season record in blocks/set is record: 1.85 set in 1996.
- Named **Big Ten Defensive Player of the Week** (9/16) after back-to-back .571% performances, 7 blocks vs. #10 Kentucky and four vs. Houston.
- The Boiler has recorded three 10-block performances: 11 at #2 Nebraska, 10 vs. K-State and 10 at Utah State (9/7).
- Number of matches with one or fewer attack errors: 10
- Number of matches hitting .300 or above: 19
- Number of matches hitting .400 or above: 14
- Number of matches hitting .500 or above: 7
- Number of matches hitting .700 or above: 3
- Number of matches with six or more blocks: 12

THE BOILERMAKER FAITHFUL

- Purdue has reached its second straight complete season-sell-out after the two Mackey matches officially sold out on Friday (9/20).
- The first match sold out within 20 minutes of the general public on-sale (vs. USC, 11/23).
- The lower bowl for each of the Mackey Arena matches filled up with just John Purdue Club member purchases before it opened up to the general public on-sale.
- Within the first hour, there were three sellouts: USC, Michigan and Penn State. Within an hour and 20 minutes, there were four sellouts.
- Within two hours of on-sale, over 9,800 tickets were sold for the Wisconsin match. That is the equivalent of filling Hollo-way four times over.
- Only five matches had tickets left just two hours into on-sale.
- Every ticket for every match was sold last year, making 2023 a complete-season sell-out.
- The student section: The Block Party sold out its season tickets in 20 minutes. That is up from the 40 minutes it took in 2023 and just under two-hour mark in 2022.
- Fans looking for season tickets have had to join a waiting list for at least the last three years. Due to the high renewal rate, only two people were able to move off the wait list in 2023 to buy season tickets.

EVA HUDSON: A FORCE

- Hudson is averaging 4.45 kills per set, 2.42 digs per set and 4.86 points per set as a junior.
- Has set a Big Ten season-high hitting % in three of the last five matches, beginning with a .349 clip at #2 Nebraska (26-4-63), and most recently with a .417 clip, the second-highest overall this season, vs. Indiana (17-2-36).
- She has posted a double-double in each week of Big Ten play.
- At #2 Nebraska, went errorless and hit .500 (5-0-10) in Set 2, hit .500% in Set 3 (7-1-12) and errorless in Set 5 (7-0-18).
- Hudson went errorless in Set 2 vs. #10 Kentucky to help turn the tides, posting an 8-0-11 (.727) performance on the way to Purdue's 3-1 victory.
- Has posted at least one errorless set in every match but two this season (vs. Ohio State, 10/23 and #8 Wisconsin 10/26).
- Went errorless for nearly the entire match at #10 Kansas until the very end, forfeiting one attack error with the score 20-20 in Set 4. She finished the match 17-1-53.
- Posted 15 kills over just two sets of action vs. #10 Kentucky and seven of Purdue's 15 points in Set 5 at #2 Nebraska.
- She is averaging a .275 clip, but hit over .400 in back-to-back matches over opening weekend.
- She's hit over .300 in 3 of 6 matches vs. top-10 foes, including just one error at Kansas.
- Hudson is on track to become Purdue's all-time leader in career kills/set (4.37 currently; record is 3.96).
- Last year, the 2023 AVCA Second Team All-America honoree ranked #1 in the Big Ten and #5 in the nation in kills (560) and #2 in the Big Ten, #12 in the nation in total points (605.5).
- She is the fastest Boilermaker to reach 1,000 career kills in the rally-scoring era and recorded more kills over her first two years than any Boilermaker to come through the program (1,075).
- Number of season / career double-doubles: 7 / 24
- Number of matches in season / career with 15+ kills: 15 / 61
- Number of matches in season / career with 20+ kills: 2 / 15
- Number of matches in season / career hitting .300% or above: 9 / 31
- Number of matches in season / career hitting .350% or above: 5 / 18
- Number of matches in season / career hitting .400% or above: 3 / 11
- Number of errorless sets in season: 26

CHLOE CHICOINE: YEAR 2

- Went errorless for the entire match vs. Indiana, recording 12 kills, 0 errors on 30 attacks for a Big Ten season-high .400 hitting % in addition to recording her 11th double-double of the season (12 digs).
- Has reached double-digit kills in 17 of 21 matches this season.
- She is averaging 3.21 kills per set, 2.68 digs per set and 3.55 points per set as a sophomore.
- Set a season-high 22 kills (22-4-55) on a then-Big Ten-season-high .327 clip at #2 Nebraska.
- Led the team in the season-opener vs. K-State with 17 kills.
- Led the team in both kills (11) and digs (10) vs. Houston (9/13).
- Posted a season-high 15 digs vs. Cal (9/5).
- The 5-10 hitter has recorded a block in six of the last eight matches.
- Recorded a career-high four blocks (2 solo, 2 assisted) alongside 14 kills at a .310 clip at Utah State (9/7).
- Was named Player of the Week once and Big Ten Freshman of the Week five times last season, including a Week 7 performance in which she earned Freshman of the Week after leading the entire Big Ten, Pac-12 and ACC in points per set (5.63).
- Chicoine produced in the biggest matches last season, hitting .359 vs. #2 Nebraska with 18 kills and just four errors on 39 swings. At #11 Penn State, the freshman recorded a Big Ten season-high 20 kills with her second-highest hitting % of the year with a .405 clip in the match, including an errorless six kills on nine attacks (.667%) to seal the win in Set 4. She went on to best her kills at home vs. Penn State, totaling a career-high 27 kills. Moreover, vs. Minnesota, she recorded just one error in the match with a .333 hitting % with 11 kills and six digs. Against #3 Wisconsin, she obliterated her previous career-high of 14 digs, totaling 23 in the win.
- Number of season / career double-doubles: 10 / 20
- Number of matches in season / career with 15+ kills: 4 / 20
- Number of matches in season / career with 20+ kills: 1 / 6
- Number of matches in season / career with 10+ digs: 11 / 20
- Number of errorless sets in season / career: 19 / 57

The Last Time....

A Match Went to 5 Sets

Oct. 17, 2024 vs. UCLA
W, 3-2 (23-25, 27-25, 25-20, 19-25, 15-11)

Last Victory over a Top-5 Team

Nov. 17, 2023 vs. #3 Wisconsin
W, 3-2 (22-25, 25-19, 25-20, 12-25, 16-14)

Team Hitting % of .400 or Better

.450 | Sept. 1, 2024 vs. UC Davis | W, 3-0

60 or More Team Kills

69 | Oct. 17, 2024 vs. UCLA | W, 3-2

15 or More Total Team Blocks

16 | Oct. 17, 2024 | W, 3-2

80 or More Team Digs

83 | Dec. 2, 2023 vs. Marquette | W, 3-1

10 or More Team Aces

10 | Oct. 12, 2024 at Iowa | W, 3-1

Team Season-Highs

Total Kills

69 | Oct. 17 vs. UCLA

Hitting % in a Match

.450 | Sept. 1 vs. UC Davis

Hitting % in a Set

.538 (Set 2) | Sept. 5 vs. California

Total Digs

79 | Sept. 28 at #16 Minnesota

Total Blocks

17 | Sept. 7 vs. Utah State

Fewest Attack Errors

7 | Aug. 31 vs. UMBC

Lowest Opponent Hitting %

.065 | Sept. 7 vs. Utah St.

Total Attacks

169 | Oct. 17 vs. UCLA

Service Aces

17 | Sept. 28 at #16 Minnesota

Top Individual Performances: 2024 Season

Category	Purdue	Opponent
Points	29 (Colvin at #16 Minnesota, 9/28)	29 (Cheridyn Leverette, UCLA)
Kills	26 (Hudson at #2 Nebraska, 10/11)	22 (Cheridyn Leverette, UCLA)
Attacks	63 (Hudson at #2 Nebraska, 10/11)	54 (Merritt Beason, Nebraska)
Service Aces	7 (Colvin at #16 Minnesota, 9/28)	4 (Kamryn Gibadlo, Utah)
Total Blocks	11 (Colvin at #2 Nebraska, 10/11)	9 (Carter Booth, Wisconsin)
Block Solos	3 (Colvin vs. Utah State, 9/7)	3 (Jess Mruzik, Penn State)
Block Assists	9 (twice by Colvin; last: at #2 Nebraska, 10/11)	7 (twice, last: Carter Booth, Wisconsin)
Digs	24 (Hornung at #16 Minnesota, 9/28)	20 (last: Nalani Iosia, Michigan State)
Assists	54 (Anderson at #16 Minnesota, 9/28)	60 (Bergen Reilly, Nebraska)
Attack % (10 attempt, min.)	.733% (Colvin, 12-1-15 vs. UC Davis, 9/1)	.545% (Caroline Jurevicius, Penn State, 6-0-11)

Purdue's Record When...

3-Set Matches: 9-2

4-Set Matches: 5-2

5-Set Matches: 2-1

Team attack % is .200 or better: 15-2

Team attack % is .250 or better: 11-1

Team attack % is .300 or better: 6-1

10 or more team blocks: 10-1

After dropping Set 1: 3-5

After winning Set 1: 12-0

Trailing after Set 3: 0-2

Leading after Set 3: 7-1

Record By Class

Seniors: 86-32 (win %: 74%)

Juniors: 60-25 (win %: 71%)

Sophomores: 39-14 (win %: 75%)

Freshmen: 16-5 (win %: 80%)

NCAA D1 Single-Match Attendance

Attendance	Match, Date
1. 15,084	Marquette at Wisconsin, 9/17
2. 14,876	Indiana at #10 Purdue, 10/19
14,876	#8 Wisconsin at #10 Purdue, 10/26
3. 14,126	Nebraska at Louisville, 9/22
4. 14,035	Texas vs. Wisconsin, 9/1

Undefeated Starts Under Shondell

- 2011 (14-0)
- 2018 (11-0)
- 2005 (11-0)
- 2024 (8-0)**
- 2017 (7-0)
- 2014 (7-0)
- 2008 (7-0)

Purdue Career Total Blocks

Name	TB	Years
1. Stephanie Lynch	660	2005-08
2. Raven Colvin	579	2021-
3. Marianne Smith	567	1982-85
4. Kate Crandell	563	1981-84
5. KiKi Jones	510	2011-14

Purdue Career Block Assists

Name	TB	Years
1. Stephanie Lynch	550	2005-08
2. Raven Colvin	507	2021-
3. KiKi Jones	454	2011-14
4. Grace Cleveland	423	201-21
5. Kristen Arthurs	403	2007-10

MOST IMPROVED PLAYER: RIGHT SIDE KENNA WOLLARD

- The sophomore has set career-highs in nearly every statistical category this season including kills (18 at Northwestern, 10/4/24), blocks (5 vs. Houston, 9/13/24) and hitting %.
- She led the team in Week 6 (at Northwestern and vs. Michigan State) in kills per set (3.71) and led outside hitters in efficiency (.385%).
- Already, she has tripled her kills output compared to last season: 57 in 2023 vs. 1234 in 2024.
- Number of matches hitting .300 or better this season: 9
- Number of matches hitting .400 or better this season: 3
- Number of matches hitting .450 or better this season: 2

HUDSON NAMED AVCA NATIONAL PLAYER OF THE WEEK: W1

- The Stacey Clark Classic MVP led the league with 46 kills and 50.5 points.
- Averaged 4.60 kills per set
- Hit over .430 in back-to-back matches (.467% vs. UMBC and .433 vs. UC Davis)
- Recorded just one attack error vs. UMBC (8/31)
- Posted a double-double in the season-opener vs. K-State, recording 16 kills, 12 digs and a career-high-tying 5 blocks, which were the most since her freshman season.
- Was one dig shy of her second double-double of the season with her 15-kill, 9 dig performance vs. UC Davis.

BIG TEN CO-DEFENSIVE PLAYER OF THE WEEK (10/7): ALI HORNING

- Libero Ali Horning received her first career Big Ten weekly honor as Co-Defensive Player of the Week.
- Over the last three matches, she's totaled 64 digs and leads the team with 5.33 digs per set.
- Posted 18 digs and a perfect reception % after 27 attempts at Northwestern.
- Recorded 22 digs vs. Michigan State in the three-set win, a performance that included 10 digs in Set 1 alone.
- Knocked on the door of a double-double with 10 digs, 7 assists vs. #10 Kentucky.
- Eva Hudson is averaging 3.00 digs per set, second-most on the team.

HC DAVE SHONDELL & COACHING STAFF

- In the 2024 calendar year, Dave Shondell began it with a four-year contract extension running through the 2027 season and has now reached GOAT status as the all-time winningest head coach in program history (470 wins).
- Under Shondell's guidance, Purdue has won 12 matches vs. top-5 opponents in the last 13 years.
- Led Purdue to a 126-47 record over the last five years alone.
- On the national stage, he is one of seven active coaches to lead a program for at least 21 years and one of seven with as many wins in the Power 4 (470 wins)
- In the last 21 seasons, Shondell has led the team to 18 NCAA tournament appearances and a perfect 18-0 record in first round matches.
- Last season, Shondell coached one of the youngest squads in program history, leading them to a third-place Big Ten finish and an NCAA Regional Semifinal berth. Three Boilermakers received All-America nods while tying a Purdue record of six Big Ten postseason honors, including two unanimous selections.
- He owns a .670 winning % at Purdue and is one of three active Big Ten coaches to be at their institution for 10 years.
- He is one of eight head coaches in Big Ten history to produce as many wins and one of two active coaches, joined by John Cook. Moreover, Shondell is the only one of the two to produce those wins at the same institution (Cook: Wisconsin & Nebraska).
- Coaching Staff Updates For 2024:** Kathy Jewell (22nd season) was promoted to associate head coach - recruiting coordinator; John Klanac was hired as assistant coach in January; Ben Cutrone (previously the GA) was hired as volleyball analyst in May.
- John Klanac was previously at Rice and graduated from Ohio State, where he was a 2011 national champion.

RECORD BOOK WATCH

- Colvin is 44 block assists away from setting a new Purdue career record, 82 total blocks away from setting a new Purdue career record and 101 kills away from reaching 1,000.
- Colvin is on track to finish #2 in Purdue history in both career blocks per set (1.38) and single-season history (1.59). Meanwhile, if the season were to end today, she'd rank #5 in Purdue single-season history with her .368 hitting %.

ANNIE DREWS INDUCTED TO THE PURDUE HALL OF FAME

- Two-time Olympian Annie Drews (2012-15) will be inducted to the Leroy Keyes Purdue Athletics Hall of Fame on Friday.
- A four-year letterwinner as an outside hitter, she was a gold medalist at the 2020 Tokyo Olympics, playing a key role in Team USA's historic run on the world stage and a silver medalist at the 2024 Paris Olympics as well as a regular with the U.S. Senior National Team.
- Before her international glory, she led the Boilermakers to three NCAA Tournament trips, including two Sweet 16s and one Elite Eight. Drews closed out her Purdue career with Second Team All-America honors in 2015 along with back-to-back First Team All-Big Ten accolades.
- She is the seventh volleyball player to be inducted to elite group, joining Ariel (Turner) Gebhardt (Class of 2020), Stephanie (Lynch) Harpenau (Class of 2018), Carol Dewey and Debbie (McDonald) West (Class of 2003), Marianne (Smith) Orr (Class of 1999) and Jane Neff (inaugural Class of 1994).

THE 2024 TEAM AT A GLANCE

- Purdue returns nearly its entire 2023 starting lineup with the exception of libero Maddie Schermerhorn, who led the Big Ten last season in digs per set. Meanwhile, the team has lost two players to injury this season: senior #22 Emily Rastovskii and sophomore #14 Grace Heaney at the same position as right side hitters.
- Three freshmen (DS Ryen McAlear, S Allie Shondell and DS Sienna Foster) and one senior transfer (OH/RS Raven Gray) join the team.
- The roster is one of the most talented and decorated in program history: returning all three 2023 All-America recognized players: Hudson, Chicoine, Colvin.
- Of Purdue's record-tying six 2023 Big Ten postseason honors, five are returning for the coming season.
- Hudson and Chicoine entered 2024 as the top-rated offensive duo in the nation, leading all of Division I (kills and points).
- For the last two consecutive seasons, All-America Honorable Mention and First Team All-Big Ten middle Raven Colvin has posted some of the most blocks in program history, ranking #2 for her 2022 season (151) and T-#3 in 2023 (148 blocks).
- One of the best freshman setters in Purdue history, Taylor Anderson led the entire Big Ten in five separate weeks and was the most productive blocker among all Big Ten setters (.89 blocks per set). Additionally, she guided Purdue to a pair of its best offensive productions in the last five years.

PURDUE VOLLEYBALL

2024 ROSTER

No.	Name	Ht.	Pos.	Yr.	Hometown / High School / Last School
1	Rachel Williams	5-7	DS	RS-Fr.	West Lafayette, Ind. / West Lafayette
2	Chloe Chicoine	5-10	OH	So.	Lafayette, Ind. / McCutcheon
3	Ryan McAleer	5-6	DS	Fr.	Overland Park, Kan. / Blue Valley
4	Kenna Wollard	6-1	OH	So.	Dunlap, Ill. / Illinois Valley Central
5	Taylor Anderson	6-1	S	So.	San Antonio, Texas / Cornerstone Christian
6	Sienna Foster	5-9	DS	Fr.	Lafayette, Ind. / Benton Central
7	Raven Colvin	6-1	MB	Sr.	Indianapolis, Ind. / Heritage Christian
8	Raven Gray	6-1	OH/RS	Sr.	Charlotte, N.C. / Cox Mill / Winston-Salem State
9	Lourdès Myers	6-3	MB	RS-Sr.	Alliance, Ohio / St. Thomas Aquinas
10	Ali Hornung	5-10	DS/OH	Sr.	New Albany, Ind. / Providence
11	Allie Shondell	5-10	S	Fr.	Lafayette, Ind. / McCutcheon
14	Grace Heaney	6-2	OPP/RS	So.	Omaha, Neb. / Elkhorn North
15	Lizzie Carr	6-6	MB	RS-So.	West Chester, Pa. / West Chester East
17	Eva Hudson	6-1	OH	Jr.	Fort Wayne, Ind. / Bishop Dwenger
19	Sydney Yim	6-1	S	Sr.	Newburyport, Mass. / Newburyport
21	Julia Kane	5-11	DS	So.	Windermere, Fla. / Windermere Prep
22	Emily Rastovski	6-2	OH	Sr.	Valparaiso, Ind. / Morgan Township

Head Coach: Dave Shondell, 22nd season

Associate Head Coach - Recruiting Coordinator: Kathy Jewell, 22nd season

Assistant Coach: John Klanac, 1st season

Assistant Coach: Michael Bouril, 2nd season | 5th overall at Purdue

Supervisor of Volleyball Operations: Carrie Gurnell, 4th season

Volleyball Analyst: Ben Cutrone, 1st season | 3rd overall at Purdue

Graduate Assistant: Owen Mahin, 1st season

Pronunciation Guide

Chloe Chicoine: SHIH-coin (starts like Chicago)

Lourdès Myers: LORD-is

Ali Hornung: HORN-nung

Ryan McAleer: MAC-uh-leer

Eva Hudson: EE-va (think eve)

Emily Rastovski: RAZ-taw-v-skee

John Klanac: Klan-ICK

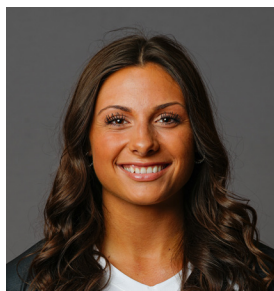
Michael Bouril: BURR-ill



2024 PURDUE VOLLEYBALL ROSTER



#1 Rachel Williams
R-Fr. | DS | 5-7 | West Lafayette, Ind.



#2 Chloe Chicoine
So. | OH | 5-10 | Lafayette, Ind.



#3 Ryan McAleer
Fr. | DS | 5-6 | Overland Park, Kan.



#4 Kenna Wollard
So. | OH | 6-1 | Dunlap, Ill.



#5 Taylor Anderson
So. | S | 6-1 | San Antonio, Texas



#6 Sienna Foster
Fr. | DS | 5-9 | West Lafayette, Ind



#7 Raven Colvin
Sr. | MB | 6-1 | Indianapolis, Ind.



#8 Raven Gray
Sr. | OH/RS | 6-1 | Charlotte, N.C.



#9 Lourdès Myers
RS-Sr. | MB | 6-3 | Alliance, Ohio



#10 Ali Hornung
Sr. | DS/OH | 5-10 | New Albany, Ind.



#11 Allie Shondell
Fr. | S | 5-10 | Lafayette, Ind.



#14 Grace Heaney
So. | OPP/RS | 6-2 | Omaha, Neb.



#15 Lizzie Carr
RS-So. | MB | 6-6 | West Chester, Pa.



#17 Eva Hudson
Jr. | OH | 6-1 | Fort Wayne, Ind.



#19 Sydney Yim
Sr. | S | 6-1 | Newburyport, Mass.



#21 Julia Kane
So. | DS | 5-11 | Windermere, Fla.



#22 Emily Rastovski
RS-Jr. | OH | 6-2 | Valparaiso, Ind.



Graduate Assistant
Owen Mahin | 1st Season



Volleyball Analyst
Ben Cutrone | 1st Season



Head Coach
Dave Shondell
22nd Season



Assoc. Head Coach
& Recruiting Coordinator
Kathy Jewell
22nd Season



Assistant Coach
Michael Bouril
5th Season



Assistant Coach
John Klanac
1st Season



Director of Operations
Carrie Gurnell
4th Season