

PURDUE

WOMEN'S BASKETBALL

1999 NCAA CHAMPIONS /// 3 FINAL FOURS /// 27 NCAA TOURNAMENT APPEARANCES /// 9 BIG TEN TOURNAMENT TITLES /// 7 BIG TEN REGULAR SEASON TITLES

2023-24 PURDUE BOILERMAKERS

	2023-24	Streak	Under Gearlds
Overall:	7-5	W1	43-31
Big Ten opponents (RS):	0-1	L2	16-20
Non-Conference (RS):	7-4	W1	25-7
Home:	6-0	W8	27-10
Away:	1-3	L2	12-14
Neutral:	0-2	L4	4-7
Post (BIG, NCAA, WNIT):	-	L2	2-4

TALE OF THE TAPE

PURDUE		WISCONSIN
66.5	Points	68.0
4.4	Margin	4.5
62.1	Defense	6.5
.416 / .382	Field Goal % / Defense	.424 / .370
.338 / 6.6	3-Pt % / Per Game	.332 / 6.9
.305 / 5.1	3-Pt% Defense / Per Game	.321 / 7.8
.777 / 13.1	Free Throw % / Per Game	.693 / 12.5
36.8 / 0.5	Reb. Per Game / Margin	.373 / -1.0
14.5 / 16.4	Assists / Turnovers	15.1 / 17.2
7.5	Steals	9.5
3.2	Blocks	4.5

2023-24 SCHEDULE

Date	P/O Rank	Opponent	Time	TV/Result
<i>October</i>				
29	-/-	Quincy (ex)	2 PM	W, 106-45

<i>November</i>				
6	-/4	at UCLA	8:30 PM	L, 92-49
12	-/-	Southern	4 PM	W, 67-50
16	-/RV	Texas A&M	7 PM	W, 72-58
20	-/-	vs. Florida\$	4 PM	L, 52-49
22	-/-	vs. Georgia\$	4 PM	L, 65-57
26	-/-	Southern Indiana	2 PM	W, 95-57

<i>December</i>				
1	-/-	at Dayton	7 PM	W, 67-59
3	-/-	Valparaiso	2 PM	W, 83-56
6	-/-	SEMO	7 PM	W, 83-57
10	-/-	at Minnesota	2 PM	L, 60-58
17	-/14	at Notre Dame	Noon	L, 76-39
20	-/-	Indiana State	11 AM	W, 79-63
30	-/-	Wisconsin	6 PM	BTN

<i>January</i>				
2	-/-	Rutgers	7 PM	BIG+
6	-/-	at Maryland	4:30 PM	BTN
10	-/-	Iowa	8 PM	Peacock
18	-/-	at Penn State	7 PM	BTN
21	-/-	Indiana	2 PM	Peacock
24	-/-	at Michigan State	6:30 PM	BIG+
28	-/-	Ohio State	2 PM	BIG+
31	-/-	at Nebraska	7 PM	BIG+

<i>February</i>				
5	-/-	Illinois	8 PM	BTN
11	-/-	at Indiana	2 PM	BIG+
14	-/-	at Northwestern	8 PM	BIG+
17	-/-	Nebraska	4 PM	BIG+
21	-/-	Michigan State	7 PM	BIG+
25	-/-	at Wisconsin	4 PM	BTN
28	-/-	Penn State	7 PM	BIG+

<i>March</i>				
3/3	-/-	at Michigan	8 PM	FS1
3/6-10		Big Ten Tournament		

* Indicates Big Ten Conference game All times subject to change
 ~ Baha Mar Pink Rankings are from the AP Top 25
 Flamingo Championship
 @ Big Ten Tournament

THE MATCHUP

GAME 13 - PURDUE BOILERMAKERS VS. WISCONSIN BADGERS
 Saturday, Dec. 30, 2023 | 6 PM | West Lafayette, Ind. | Mackey Arena [14,876]

PURDUE BOILERMAKERS

7-5, 0-1 BIG



WISCONSIN BADGERS

7-4, 0-1 BIG

Head Coach: Katie Gearlds (Purdue, 2007)

Record at Purdue (3rd): 43-31

Career Record (11th): 271-81

Ranking (NET/AP/Coach): 84 / - / -

Streak: W1 Last 5: 3-2 Last 10: 6-4

Last Game: 79-63, Win, vs. Indiana State

RADIO | 95.3 BOB FM

Tim Newton - PxP

Jane Schott - Analyst

TV/STREAM | BTN

Jack Kizer - PXP

Shimmy Gray-Miller - Analyst

LIVE STATS

PurdueStats.com

WEBSITE

PurdueSports.com

Head Coach: Marisa Moseley (Boston, 2004)

Record at Wisconsin (3rd): 26-45

Career Record (6th): 71-74

Ranking (NET/AP/Coach): 100 / - / -

Streak: W2 Last 5: 3-2 Last 10: 6-4

Last Game: 76-64, Win, vs. Eastern Illinois

THE OPENING TIP TEAM CHART ON LAST PAGE

- After the holiday break, the Purdue women's basketball team jumps into its Big Ten slate on Saturday afternoon with a 6 p.m. tip against Wisconsin at Mackey Arena.

- The Boilermakers enter Saturday's game tied for the second longest active winning streak at home at eight games dating back to last season. The eight-game streak is Purdue's longest by the Boilermakers since the 2012-13 season. Maryland holds the longest active mark in the league at 19 straight wins.

- Mary Ashley Stevenson sits atop the Big Ten freshman charts in rebounding with 5.8 per night. The New York City native also leads all Big Ten rookies with nine games of at least eight points and eight rebounds.

- The Boilermakers' freshman class is second in the Big Ten in scoring at 21.3 points per game. Rashunda Jones is second among the conference's freshmen in scoring at 10.9 points per game.

- After finishing one point shy of her Purdue career high, Abbey Ellis is nearing the 1,000-point club for the second time in her career. The Australian needs 128 points to reach the 1,000-point mark as a Boilermaker, which would make her the 36th 1,000-point scorer in Purdue history and the first since 2021.

- Madison Layden's 46.8% clip from behind the arc ranks 21st in the nation and second in the Big Ten. She is shooting an even 50% from distance (18-36) at Mackey Arena this season.

- Less than a year after a knee injury ended her high school career, Sophie Swanson has seen her impact grow for the Boilermakers. Against Indiana State, Swanson dropped a career-high 10 points. She has made a triple in each of her last four games.

- Swanson was the third different Purdue freshman to score in double figures this year, making the first time Purdue has had three rookies hit double digits since the 2016-17 season.

- Jeanae Terry has six games with at least five assists and five rebounds this year, tied for seventh in the nation. Terry and Caitlin Clark are the only players in the nation with more than 50 5-5 games since the start of the 2019-20 season (Terry - 52, Clark - 75).

- Purdue closed the non-conference stretch of its season with a 7-4 mark. The Boilermakers' 6-0 mark at home pushed their non-conference home winning streak to a Purdue record 18 games.

- In a conference that features seven teams in the top 25 in attendance, Purdue enters Saturday's game ranked 20th at 4,967 fans per game.

SERIES HISTORY

Overall	56-22
At Home	31-6
On the Road	18-15
Neutral Site	7-1
Streak	Purdue - 2
Under Gearlds	2-2
Gearlds vs. Moseley	2-2
Purdue vs. Moseley	2-2
First Meeting	12/3/1976, Home, Win, 53-40
Last Purdue Win	3/2/23, Neutral, Win, 57-55
Last Purdue Loss	2/27/22, Home, Loss, 63-62

- Purdue's 56 wins vs. Wisconsin are their second most against a Big Ten opponent.

- Jayla Smith drained a triple with five seconds left to beat Wisconsin in the Big Ten Tournament, keeping Purdue's NCAA Tournament hopes alive.

- Five of the last six meetings between Purdue and Wisconsin were decided by three or fewer points.

A WIN WOULD...

- **Be better than a loss**

- Mark Purdue's longest home winning streak since a 12-game streak during Katie Gearlds' playing days from March 19, 2005 to Jan. 25, 2007.

- Be win Purdue's 498th all-time at Mackey Arena.

NUMBERS TO KNOW

8

The Boilermakers are tied for the second longest active home winning streak among Big Ten teams at eight games.

1 of 12

Mary Ashley Stevenson is one of 12 freshmen from a major conference averaging over nine points and five rebounds per game.

14

Purdue has made 10 or more 3-pointers in 14 games during the Katie Gearlds era.

THE ROSTER

No.	Name	GP/GS	MPG	PPG	RPG	APG
1	Amiyah Reynolds					
2	Rashunda Jones	8/0	19.9	10.9	3.1	1.5
3	Jayla Smith	11/1	16.7	4.3	1.9	0.7
10	Jeanae Terry	12/12	27.5	4.1	6.9	5.8
11	McKenna Layden	11/0	12.5	1.8	2.0	0.5
15	Mila Reynolds	6/0	8.9	2.2	1.5	0.3
20	Mary Ashley Stevenson	12/11	27.6	9.1	5.8	1.0
21	Emily Monson	8/0	6.1	1.3	0.9	1.0
23	Abbey Ellis	12/12	29.9	14.9	3.3	2.0
31	Sophie Swanson	5/0	9.9	6.0	2.4	0.6
32	Alaina Harper	11/0	6.4	0.7	0.8	0.0
33	Madison Layden	12/12	29.3	10.7	3.0	1.3
34	Caitlyn Harper	12/12	27.1	9.8	4.2	1.3

Boiler Notes

Will miss the season due to an injury from high school

First Purdue freshman with multiple 20-pt games since 2017-18

Set season/career highs in every category last year

Only player in the nation with a non-point double-double this season

Indiana All-Star, Reached 2020 IHSAA title game w/ Madison

Set career high with six points and five boards vs. Valpo

Leads Big Ten in freshman rebounding, fifth in scoring

Has seven assists in her last four games over 27 minutes played

Scored in double figures in 11 games

10 points against ISU, less than 10 months from knee surgery

Scored first points at Purdue vs. Southern Indiana

One of 10 players nationally shooting 45 FG%, 45 3PT%, 80 FT%

Dropped a Purdue-best 22 points against SEMO



PURDUE QUICK FACTS

UNIVERSITY INFO

Location: West Lafayette, Ind. Founded: 1869
 Conference: Big Ten Enrollment: 52,211
 Colors: Old Gold & Black Nickname: Boilermakers
 President: Dr. Mung Chiang Athletics Director: Mike Bobinski
 Deputy A.D. / Senior Woman Administrator: Tiffini Grimes

COMMUNICATIONS CONTACT

Ian MacDougall - Associate Director (WBB Contact)
 Email - imacdoug@purdue.edu | Cell - 317.313.7486 | Office - 765.494.0529

PROGRAM HISTORY

First Season - 1975-76 (49th Season)
 All-Time Record - 930-541 All-Time Big Ten Record - 429-270
 Home Record - 497-176 Home Big Ten Record - 245-105
 Away Record - 291-276 Away Big Ten Record - 184-165
 Neutral Site Record - 142-89

POSTSEASON HISTORY

NCAA Championships - **1999** (Only one by a Big Ten program)
 Final Fours - **3** (1994-99-2001)
 Sweet 16 - **12** (1990-92-94-95-98-99-01-03-04-06-07-09)
 NCAA Appearances - **27** (1989-90-91-92-94-95-96-97-98-99-
 00-01-02-03-04-05-06-07-08-09-11-12-13-14-16-17-23)
 All-Time NCAA Tournament Record - **47-26**
 WNIT/WNIT Appearances - **4** (1988-10-18-22)
 Big Ten Regular Season Titles - **7** (1991-94-95-97-99-01-02)
 Big Ten Tournament Titles - **9** (1998-99-00-03-04-07-08-12-13)

MACKEY ARENA

Broke Ground: **July 1965** | First Game: **Dec. 2, 1967** | Capacity: **14,876**
 First Women's Game: **Dec. 2, 1975** | **Purdue 78, Illinois 74**
 Gearlds Overall: **26-10** | Non-Con: **19-1** | **BIG: 8-9**
 Purdue Overall: **496-176** | Non-Con: **251-71** | **BIG: 245-105**
 Home Wins vs. Ranked Teams: **50**

LARGEST CROWDS OF KG ERA

Attendance	Date	Opponent	Result
14,876	2/5/23	No. 4 Indiana	L, 69-46
8,005	1/16/22	No. 5 Indiana	L, 73-78 (OT)
7,177	12/20/23	Indiana State	W, 79-63
5,457	12/21/21	North Alabama	W, 86-53
5,305	12/3/23	Valparaiso	W, 83-56

LAST TIME OUT

PURDUE 79, INDIANA STATE 63

- Abbey Ellis was one point shy of her Purdue career high with 28 points on 8-of-13 shooting with a 9-of-11 mark at the line.
- Mary Ashely Stevenson was two rebounds shy of a double-double, finishing with eight rebounds and 11 points.
- The Boilermakers shot 47.4% from the field for their fifth game shooting over 45% this year.
- Purdue connected on 11 of its 3-point attempts and shot an even 50% from behind the arc.
- Tim Newton celebrated his 1,000th game at the radio mic.

STARTING LINEUPS

Lineup (Record)	Games
1. Smith, Terry, Ellis, Layden, Harper (0-1)	1
2. Terry, Stevenson, Ellis, Layden, Harper (7-4)	2-12

Player	19/20	21	22	23	24	Total	Record [^]
1 Reynolds	-	-	-	-	-	-	-
2 Jones	-	-	-	-	-	-	-
3 Smith	-	-	1	3	1	5	1-4
10 Terry	-/11*	23*	32	30	12	108*	42-32
11 Layden	-	-	-	-	-	-	-
15 Reynolds	-	-	-	-	-	-	-
21 Monson	-	-	-	-	-	-	-
20 Stevenson	-	-	-	-	11	11	7-4
23 Ellis	-/29*	23*	31	18	12	113*	35-26
31 Swanson	-	-	-	-	-	-	-
32 Harper	-	-	-	2	-	2*	-
33 Layden	-	21	28	13	12	74	38-36
34 Harper	3*/5*	10*	32*	29	12	91*	25-16

* Includes starts at previous school | ^ Record at Purdue

BOILER NOTES

BOILERMAKER BASKETBALL

- Purdue Women's Basketball is in its 49th season in 2023-24.
- Purdue was the 40th program in NCAA Division I history to reach 900 wins.
- The Boilermakers are the only team from the Big Ten to win a national championship, hoisting the title in 1999.
- The program has reached the NCAA Tournament 27 times with 12 Sweet 16s, eight Elite 8s, three final fours and a trio of national championship game appearances.
- In addition to its NCAA success, Purdue owns the Big Ten record for most tournament titles with nine.

THIRD SEASON OF THE KG ERA

- Head coach Katie Gearlds is in her third season at Purdue after guiding the Boilermakers to back-to-back postseason bids, including the first NCAA Tournament appearance since 2017.
- In two short seasons, Gearlds has transformed Purdue back into an NCAA Tournament squad with eyes on taking the Boilermakers back to the nation spotlight when she was on the floor 20 years ago.
- Gearlds took over the program 47 days before her first campaign in 2021-22 when Purdue was coming off a seven-win season. She guided Purdue to a 17-15 mark and reached the WNIT after the program failed to reach the postseason in the previous three years.
- Purdue finished the 2022-23 season with a 19-11 record and its first return to the NCAA Tournament since 2017.
- Gearlds joined Boilermaker legends Carolyn Peck and Lin Dunn as the only Purdue head coaches to post win improvements in each of their first two seasons.
- When Gearlds moved into the head coach role, Purdue had lost 19 straight games to ranked opponents. Over her first two years, Gearlds has racked up three ranked wins, including the program's first true road AP top-5 victory against No. 2 Ohio State in 2022-23.
- Gearlds was initially hired as the associate head coach with plans to become the head coach at the start of the 2022-23 season.

WAIT, HOW MANY SISTERS ARE ON THIS TEAM?

- If a team is a family, Purdue is taking that to a whole new level with three sets of siblings on the 2023-24 roster - Madison & McKenna Layden, Mila & Amiyah Reynolds, Caitlyn & Alaina Harper.
- The Boilermakers are the only team in the nation with three sets of sisters. Utah Tech is the only other program with more than one pair of siblings.
- Based on the tireless research of a communications intern, 39 teams across Division I have one pair of sisters of the roster this year.
- McKenna and Madison Layden became the first Boilermakers to play on the floor together in program history, playing 6:29 together in the season opener at UCLA.
- Alaina Harper and Caitlyn Harper were the second set of siblings to play in the same game at Purdue, when Alaina checked in for her big sister in the fourth quarter against UCLA.

STEVENSON & SPIDER

- Mary Ashley Stevenson and Rashunda Jones have been instant impacts for the Boilermakers as freshmen.
- They are two of the five freshmen from the Big Ten averaging over eight points and three rebounds per game.
- They rank third and fifth among conference rookies in scoring.
- Against Valparaiso, the duo achieved feats not reached by Purdue freshmen for over five years.
- Stevenson's 14 points and 10 rebounds marked the first points-rebound double-double by a Purdue rookie since Sam Ostarello's 17 points, 14 rebounds against Evansville on Dec. 19, 2009.
- Jones was the first Purdue freshman to reach 20 points twice since Karissa McLaughlin in 2017-18.

BIG FRESHMEN AVERAGING 8 PPG, 3 RPG

Player	School	PPG	RPG
Mary Ashley Stevenson	Purdue	9.1	5.8
Natalie Potts	Nebraska	10.8	5.6
Grace Grocholski	Minnesota	10.7	4.8
D'Yanis Jimenez	Wisconsin	11.5	4.0
Rashunda Jones	Purdue	10.9	3.1

FRESHMAN OUTPUT

- With six freshmen on the roster, five active, the rookie class for the Boilermakers have quickly made an impact in West Lafayette.
- The six-player class was Gearlds' primary focus during her first years back at Purdue.
- Mary Ashley Stevenson jumped into the starting lineup for the first time in her career against Southern, tallying 13 points, all in the second half. She has finished in double figures five times.
- Rashunda Jones scored 20 points against Texas A&M, the first 20-point game by a Purdue rookie since 2017-18, later topping it with a 22-point outing against Valparaiso.
- McKenna Layden sprang for eight points and six rebounds against Southern Indiana.
- Emily Monson has been effective in her time on the floor, notching four assists in eight minutes against Valpo.
- After missing the first five games of the year with an injury, Sophie Swanson sprang for eight points and two triples vs. Valpo.

SCORING BY BIG TEN FRESHMAN CLASS (Per HerHoopStats.com)

School	PPG	School	PPG
Nebraska	23.0	Northwestern	8.3
Purdue	21.3	Indiana	6.2
Minnesota	21.1	Michigan State	5.3
Wisconsin	14.3	Illinois	4.9
Rutgers	13.1	Michigan	2.9
Maryland	11.3	Ohio State	2.8
Penn State	8.0	Iowa	0.2

PURDUE FRESHMAN BESTS THIS YEAR

Stat	Combined	Leader
Points	47, vs. Valparaiso	22, Jones, vs. Valparaiso
3-Pointers	5, vs. Valparaiso	2, 6 times
Rebounds	20, vs. Valparaiso	10, Stevenson, vs. Valparaiso
Assists	9, vs. Valparaiso	4, 2 times
Steals	4, vs. Southern Ind.	2, Jones vs. Southern Ind.
Blocks	2, 2 times	2, Stevenson, vs. Valparaiso
Minutes	96, vs. Southern Ind.	32, Stevenson vs. Georgia

HARPER HITTING HER STRIDE

- In her sixth year of college basketball, Caitlyn Harper might be in the best shape of her career playing over 30 minutes in six games this season. She bested 30 minutes just thrice last year.
- Harper scored in double figures in seven outings, sitting fourth on the team with 9.8 points per game at a 53.9% shooting clip.
- She is one of 17 post players from the Big Ten averaging double figures and shooting over 50% from the field
- After a rough night without scoring against Valpo, Harper bounced back to drop her Purdue best 22 points against SEMO.

ELITE ELLIS

- Abbey Ellis is her final campaign in West Lafayette after honorable mention All-Big Ten nods each of the last two years.
- The Australian leads the team in scoring with 14.9 points per game and has reached double figures in 11 outings.
- Ellis is third in the Big Ten with a 86% mark at the line (43-50). Her career 87.8% mark at Purdue is second in program history.
- Ellis paired with Rashunda Jones to become the first Boilermaker duo to score 20 points in a game since 2019-20 when they both scored 20 against Texas A&M.
- The fifth-year senior dropped 28 points against Indiana State, finishing one shy of her Purdue career high.
- Ellis' 10-game double-digit streak to start the year marked the second straight season Purdue had a player hit double figures in the first 10 games, following Lasha Petree's 11 games last year.

LETTING IT FLY

- Shoot before you turn it over - that's the goal for Purdue's offense.
- The Boilermakers have not been shy about shooting the three during Katie Gearlds' time on the sideline, notching the first and second most made and attempted triples in program history over the last two years.
- Purdue has made 10 or more 3-pointers in 14 games during the Katie Gearlds era. Prior to her return to West Lafayette, the Boilermakers tallied just 22 double-digit triple games in the preceding 12 seasons.

BOILER NOTES

LOCK DOWN DEFENSE

- The Boilermakers have held eight opponents to 60 or fewer points this season, tied for third in the Big Ten
- Purdue is 6-2 in those games this year and 22-3 under Katie Gearlds when keeping a team to 60 points or fewer.
- Since the opener at UCLA, Purdue has allowed 59.4 points per game, while holding teams to 36.6% shooting 27.9% from three.
- Purdue is generating 14.4 points per game off 16 opponent turnovers this season.

THE NAME IS MARY ASHLEY STEVENSON

- Mary Ashley Stevenson looks to be a force her first season in West Lafayette, joining the starting lineup in her second career game.
- Stevenson is fifth on the team with 9.2 points per game, which ranks fifth in the Big Ten among freshmen. She leads league rookies with 5.8 rebounds per game.
- Stevenson has the most games among Big Ten freshmen this season with at least eight points and eight rebounds with eight.
- In her college debut at UCLA, she finished with eight points, two rebounds one assist, one steal and one block in 27 minutes in the season opener at No. 4 UCLA, becoming the first Purdue rookie since Sam Ostarello in 2009 to record at least five points and one block, rebound, assist and steal in the first game of the year.
- Her double-double vs. Valpo was the first points-rebounds by a Purdue rookie since 2009. She is one of two rookies from the Big Ten this season to record a double-double (Natalie Potts, NEB)
- She won three state championships (2 NY, 1 SC) and went 80-12 with 2,552 points and 1,575 rebounds during her prep career.
- Before she stepped on campus, she legally changed her last name from Groot to Stevenson, taking the name of her stepdad Gary.

THE SPIDER - RASHUNDA JONES

- Rashunda Jones was the first South Bend Washington commit before the Reynolds sisters joined to reunite the powerful trio.
- Jones has missed the last three games as a medical scratch.
- Coming off the bench, Jones is second on the team with 10.9 points per game while shooting 44.9% from the field with five 3-pointers.
- She is the first Boilermaker rookie to score 20 points twice in a season since Karissa McLaughlin in 2017-18.
- She earned Big Ten Freshman of the Week, Purdue's first since 2017-18, when she scored 20 points against Texas A&M.
- She scored 22 points against Valpo, the most by a Purdue freshman since Dominique McBryde in 2015-16.
- Jones was tabbed the 2023 Indiana Miss Basketball and a member of the Max Preps National Player of the Year Watch List.
- She guided the Panthers to a 95-18 record in her career and a 2022 IHSA 3A Championship and three conference titles.
- Her versatility earned her the nickname "Spider" from her high school head coach and Amiyah & Mila's father - Steven.
- She finished her career with 1,791 points, 497 rebounds, 427 assists and 419 steals.

TERRY'S TIDBITS

- Jeanae Terry has shown herself to be even more of a pass-first point guard in her final season of college basketball.
- Terry notched the first non-point double-double of the year against SEMO with 11 assists and 10 rebounds. Accomplishing the feat four times, Terry has the most non-point double-doubles since at least 2009-10.
- She is the only active player in the country to be a part of the 800-rebound, 600-assist, 200-steal club and the second in Big Ten history, after Samantha Logic from Iowa from 2012-15.
- During her time in West Lafayette, Terry has set the program record for triple-doubles and non-point double-doubles.
- Terry has 442 assists at Purdue to rank ninth in program history.
- Earlier this season, Terry passed Katie Gearlds, Kelly Komara and Ukari Figgs on the all-time assist charts.
- A pass-first guard, Terry has six games this year with at least five rebounds and assists. She is second in the nation behind Caitlin Clark for most 5-5 games since her freshman year with 52.
- Terry's high school number at Wayne Memorial was retired during the holiday break. Her banner featured a pretty ingenious high school moniker - The Terranaetor.

NUMBERS TO KNOW IN THE GEARLDS ERA

- Purdue is 36-5 when leading after the first quarter and 41-7 when taking a lead into the fourth quarter.
- Purdue is 27-15 when knocking down seven or more 3-pointers.
- Purdue is 17-11 when shooting 35% from distance or better and 35-12 when shooting 40% or better overall, including 14-1 with a field goal clip above 50%.
- The Boilermakers are 30-6 when outrebounding opponents.
- The Boilermakers hold a 29-5 record when scoring 70 or more points, while also posting a 39-11 mark when holding opponents below that mark.

MILESTONE WATCH

- Abbey Ellis is 128 points away from joining the 1,000-point club at Purdue. The Australian already has over 1,500 points in her career.
- Caitlyn Harper is five 3-pointers away from 100 in her career.
- Madison Layden needs 155 points to join the 1,000-point club.
- Jayla Smith is 79 points away from 500 for her career.
- Jeanae Terry needs 175 rebounds for 1,000 in her career and 95 for 1,000 points in her career.
- Terry is 58 assists away from 500 during her time in West Lafayette, which would make her the seventh player in program history to hit that mark.

EARLY ATTENDANCE RETURNS

- Head coach Katie Gearlds continues to bring the magic back to Mackey Arena, as more fans come through the turnstiles.
- Purdue has topped 5,000 fans in four home games this season and rank 20th nationally and fifth in the Big Ten.
- Purdue set the program attendance record against Indiana last season with a sellout of 14,876.
- Purdue has sold its most season tickets since 2012-13.

MONEY MADs

- Senior Madison Layden is in her fourth campaign as one of the top all-around producers for the Boilermakers.
- Layden is third on the team with 10.7 points per game.
- She is second the Big Ten in 3-point percentage with a 47.3% clip (26-55). She has five games with four or more triples.
- Layden has climbed up to 11th in program history in career triples, making 171 during her time in West Lafayette.
- Layden got engaged during the holiday break to Rees Zay, a Purdue graduate and former practice player of the program.
- She opened her home campaign with a career-high 21 points against Southern on 5-of-6 shooting with four triples.
- Layden was a perfect 6-of-6 with four 3-pointers for 16 points against Southern Indiana.
- She set the single-game Purdue freshman record for triples in a game with six against Iowa in 2020-21.
- She was tabbed All-Big Ten honorable mention as a sophomore and named to the All-Freshman team in 2020-21.

SNIPER SOPHIE SWANSON

- A pure shooter and scorer, Sophie Swanson joined the program after a stellar prep career at Barrington Prep in Illinois.
- Swanson made her collegiate debut against Southern Indiana with two points and two rebounds after missing the opening five games rehabbing from her high school injury.
- She scored a career-best 10 points against Indiana State.
- Swanson was named the 2022 Illinois Miss Basketball and 4A Player of the Year following her junior campaign.
- She set the school record for points in a season (750), 3-pointers in a year (86), thrice set the school mark for points in a game (40, 37, 36).

DISHING OUT DIMES

- The Boilermakers are 17-0 over the last three seasons when dishing out 20 or more assists.
- Against Southern, the Boilermakers dished out 19 assists on 20 made field goals. They were the fifth most of the Gearlds era, while the 95% assist rate was the best by Purdue since 2015 against Minnesota (24 ast, 25 FGM).
- Purdue then dished out 24 assists against Southern Indiana, which ranked third in the Gearlds era.

25 YEARS FOR THE CHAMPS

Record - 34-1, 16-0 Big Ten

Big Ten Finish - 1st Place

Big Ten Tournament - Champions

Championship Game

Purdue 62, Duke 45 (Ukari Figgs 18 pts)

Season Honors

USBWA All-America - Stephanie White

AP & WBCA All-America - Stephanie White, Ukari Figgs

Honda Award & Wade Trophy - Stephanie White

Big Ten Player of the Year - Stephanie White

NCAA Tournament Most Outstanding Player - Ukari Figgs

All-Tournament Team - Ukari Figgs, Stephanie White, Katie Douglas

AP & Naismith National Coach of the Year - Carolyn Peck



Purdue celebrates the 25th anniversary of its 1999 National Championship, the only one in the Big Ten in women's basketball. Led by National Coach of the Year Carolyn Peck and a star-studded list of greats in Stephanie White, Ukari Figgs, Camille Cooper, Katie Douglas, Michelle Duhart and Kelly Komara, the Boilermakers knocked off 10 ranked opponents, including No. 1 Tennessee in the season opener.

After posting a perfect 16-0 record in Big Ten play and winning the league tournament, Purdue carved through the NCAA Tournament as a No. 1 seed, before defeating Duke 62-45 in the National Championship Game.

INDIANA MISS BASKETBALL

- Jayla Smith is the 10th Indiana Miss Basketball to play at Purdue, winning the award in 2021.
 - The long history of Purdue welcoming the state's top player extended back to 2003, when Katie Gearlds became the fifth honoree to pick West Lafayette.
 - Madison Layden (2020) and Rashunda Jones (2023) finished as runner-ups in their senior campaigns.
 - Purdue holds the record for most Indiana Miss Basketball winners, followed by Indiana, Notre Dame, Tennessee tied for second with four.
- | | |
|------------------------------------|----------------------------------|
| 1984 Sharon Versyp, Mishawaka | 1991 Jennifer Jacoby, Rossville |
| 1995 Stephanie White, Seeger | 1998 Kelly Komara, Lake Central |
| 2003 Katie Gearlds, Beech Grove | 2005 Jodi Howell, Alexandria |
| 2008 Brittany Rayburn, Attica | 2010 Courtney Moses, Oak Hill |
| 2017 Karissa McLaughlin, Homestead | 2021 Jayla Smith, Lawrence North |

RANDOM ODDS AND ENDS

Name	Consecutive Made Free Throws	Straight Games with a Three	Consecutive Starts
1 - Reynolds	-	-	-
2 - Jones	9	1	-
3 - Smith	1	-	-
10 - Terry	5	-	108*
11 - Layden	3	-	-
15 - Reynolds	3	1	-
20 - Stevenson	1	-	11
21 - Monson	-	1	-
23 - Ellis	4	1	27
31 - Swanson	-	2	-
32 - Harper	-	-	-
33 - Layden	2	1	12
34 - Harper	-	2	16

Opening Tips	Won-Lost	Record in Games
Jayla Smith	0-1	0-1
Mary Ashley Stevenson	5-6	7-4

Scoring First	2	3	FT	Record in Games
Abbey Ellis	5			2-3
Caitlyn Harper	1			0-1
Madison Layden	1	1		2-0
Mary Ashley Stevenson	2	1		2-1
Jeanae Terry			1	1-0



BIG TEN STANDINGS

	Big Ten	Overall	Streak
Iowa	1-0	12-1	W9
Minnesota	1-0	11-1	W8
Indiana	1-0	9-1	W8
Ohio State	1-0	9-2	L1
Maryland	1-0	9-3	W7
Michigan	1-0	9-3	L1
Nebraska	1-0	9-3	L1
Michigan State	0-1	10-2	W3
Penn State	0-1	9-3	W2
Wisconsin	0-1	7-4	W2
Purdue	0-1	7-5	W1
Illinois	0-1	6-5	W1
Rutgers	0-1	6-8	L3
Northwestern	0-1	5-7	W2

NATIONAL RANKINGS

	National	BIG	Stat
Assist-to-Turnover	138	12	.88
Assists per Game	113	11	14.5
Bench Points Per Game	207	11	18.2
Blocked Shots per Game	160	10	3.2
Field-Goal %	156	14	41.6
Field-Goal % Defense	133	7	38.2
Fouls Per Game	59	5	14.8
FT Attempts Per Game	170	10	16.8
FT Percentage	24	2	
FT Made Per Game	77.7107	8	13.1
Rebound Margin	195	12	0.5
Defensive Rebounds Per Game	93	9	27.0
Offensive Rebounds Per Game	284	12	9.8
Rebounds Per Game	185	11	36.8
Scoring Defense	140	6	62.1
Scoring Margin	164	12	4.4
Scoring Offense	175	14	66.5
Steals Per Game	210	9	7.5
3-Point Attempts Per Game	165	10	19.5
3-Point Percentage	93	9	33.8
3-Point Percentage Defense	172	9	30.5
3-Pointers Per Game	133	9	6.6
Turnover Margin	211	12	-0.5
Turnovers Forced Per Game	211	8	15.9
Turnovers Per Game	191	10	16.4
Winning Percentage	146	11	58.3

INDIVIDUAL NATIONAL RANKINGS (TOP-50)

TOP 50 RANKINGS	National	BIG	Stat
Madison Layden			
3-Point Percentage	20	1	46.8
Jeanae Terry			
Assists	21	4	69
Assists Per Game	26	4	5.8

BOILER NOTES

JT - START UNKNOWN, FINISH UNFORGETTABLE
 • "Start Unknown, Finish Unforgettable" is the mantra Jeanae Terry lives by so much she has a tattoo featuring that phrase.
 • Last season, she was one of three players (Iowa's Caitlin Clark and Notre Dame's Olivia Miles) to record at least 6.0 points, rebounds and assists per game.
 • Terry and Clark are the only two players in the nation to dish out 150 assists and haul in 200 rebounds in each of the last two years.
 • Terry holds the second and third spots on the single-season assist lists, as well as the program's lead for career assist-to-turnover ratio.
 • The Detroit native is the only player in Purdue men's or women's basketball history to amass multiple triple-doubles in a season and a career, a feat she achieved during the 2021-22 campaign.
 • In both of her triple-double performances, the last category Terry hit double digits in was points.
 • Terry is also the only Boilermaker to record a non-point double-double. Jeanae Terry recorded the mark four times since the start of last season, the most of any player in the nation since 2009.

TERRY'S NATIONAL RECOGNITION

	Stat	National	BIG
Assist-to-Turnover	2.06	83	8
Assists	64	16	3
Assists Per Game	5.8	24	3
Rebounds	78	144	10
Rebounds per Game	71	198	7
Non-Point Double-Doubles	1	1	1

800 REBOUNDS, 600 ASSISTS, 200 STEALS IN BIG TEN HISTORY

Player	School	Rebs	Asts	Stls
Samantha Logic	Iowa, 2012-15	922	898	260
Jeanae Terry	Purdue/Illinois, 2020-Pres.	825	634	201
<i>Approaching</i>				
Caitlin Clark	Iowa, 2021-Pres.	801	894	161

**Also the only players in Big Ten history with 800 rebounds and 600 assists*

TERRY'S NON-POINT DOUBLE-DOUBLES

Opponent, Date	Asts	Rebs	Pts	Other
SEMO, 12/3/23	11	10	1	1 blk, 1 stl
Penn State, 2/22/23	10	10	9	8 stls
Murray State, 11/13/22	10	10	9	1 stl
Marshall, 11/10/22	10	10	5	2 stls

PURDUE TRIPLE-DOUBLES

Name	Opponent, Date	Pts	Rebs	Asts/Blks
Jeanae Terry	Minnesota, 1/27/22	10	11	12 asts
Jeanae Terry	Miami, 12/19/21	11	12	10 asts
Stephanie White	Indiana, 1/22/99	20	11	10 asts
Daniel Campbell	Butler, 11/17/07	12	11	11 blks

ACTIVE BIG TEN LEADERS

Assists	School	Stat	NCAA Rank
Caitlin Clark	Iowa	894	1
Jeanae Terry	Purdue	634	4
Jaz Shelly	Nebraska	514	12
Makenna Marisa	Penn State	475	20

Rebounds	School	Stat	NCAA Rank
Mackenzie Holmes	Indiana	844	26
Jeanae Terry	Purdue	825	28
Caitlin Clark	Iowa	801	33

Steals	School	Stat	NCAA Rank
Jacy Sheldon	Ohio State	213	20
Gabby Marshall	Iowa	207	25
Jeanae Terry	Purdue	201	29

NON-CONFERENCE DOMINANCE

- Purdue has an 25-7 non-conference mark under Gearlds.
- The Boilermakers capped the non-conference campaign with their 18th straight home win against non-conference opposition (including postseason), setting a new program record.
- Purdue's 25 regular season non-conference wins since the start of the 2021-22 campaign rank third among Big Ten teams.
- Last season, the Boilermakers went 9-1 for the third-best clip in team history and the best since 2003-04.
- Purdue went 9-2 in regular season non-conference action during Gearlds' first campaign, which tied for the second best mark by a first-year head coach at Purdue.

MAGIC MCKENNA

- McKenna Layden has shown poise on the floor this year as a quality defender rebounder and one of the first subs.
- She reunited with her sister Madison following a 78-17 career record at Northwestern High School and was named an Indiana All-Star as a junior and senior.
- She set the Northwestern single-game record with 47 points with nine 3-pointers against Taylor in 2021.
- In addition to her success playing for her mother Kathie, including reaching the IHSAA 4A Championship Game as a freshman alongside Madison, Layden won two sectional titles in volleyball and tennis each.

FRESHMEN STAND STALL IN OPENER

- Against UCLA, the active freshman quartet of Mary Ashley Stevenson, McKenna Layden, Rashunda Jones and Emily Monson combined for 20 points.
- The output was the most by a Purdue freshman class in a season opener since Karissa McLaughlin went for 21 points in the season opener against Central Michigan in the 2017-18 season.
- Stevenson finished with a rookie best eight points, two rebounds, two assists, one block and one steal. She was the first Purdue freshman to score five points and record a block, steal, rebound and assist to start a year since Sam Ostarello against Western Illinois in 2009-10.
- Stevenson, Layden and Jones saw early action against the Bruins. The trio were on the floor together for a combined 10:57 during their career game at Purdue.

MURFREESBORO MONSON

- Emily Monson has taken steps forward during her time on the court this season, making 3-pointers against UCLA and Valpo. She dished out a quartet of assists in eight minutes vs. Valpo.
- She came to West Lafayette after garnering an Naismith High School All-America honorable mention nod.
- Monson powered Blackman High School throughout her career going 107-16 with an 81-8 mark as a three-year starter.
- Monson finished her career with 1,066 points, tallying a career-best 15.8 points per game as a senior. She recorded more points her senior season than her first three years combined.

OUR INDIANA MISS BASKETBALL

- Jayla Smith emerged as the top sub off the bench last season when she set career highs for single-game and season stats.
- Smith tallied 7.8 points per game while shooting 45.5% from the field and finished second on the team with 30 steals.
- Smith's biggest impact came with the Boilermakers' season on the line in the Big Ten Tournament. The Indianapolis native laced a wing 3-pointer with less than five seconds remaining and down one to beat Wisconsin 57-55, a victory that likely edged Purdue into the NCAA Tournament.

MILA MAKES HER WAY HOME

- Mila Reynolds set career highs with six points and five rebounds against Valparaiso.
- She made her first career 3-pointer against Indiana State.
- The sophomore returned to her home state and reunited with her little sister Amiyah after playing her freshman season at Maryland.
- She won the 2022 IHSAA 3A State Championship with Amiyah and Rashunda Jones.
- The eldest Reynolds totaled 2,099 career points, second in Panther history behind 2010 graduate Skylar Diggins-Smith.



BOILER NOTES

ALIRGHT ALAINA

- Alaina Harper has been one of the program's most improved players since the start of the summer.
- Alaina and her sister Caitlyn are on the same team for the first time in their lives.
- Gearlds has said repeatedly that she would have loved to play with a selfless player like Alaina on the court to get her open.
- Following a freshman season at Grand Canyon that saw her average five points and 2.2 rebounds, Alaina transferred to Purdue to play with Caitlyn and be closer to home.
- She was tabbed the No. 6 player in the state by prep Girls Hoops and was named WBCA First Team All-State in Wisconsin twice.

PURE LEADER AMIYAH REYNOLDS

- Amiyah Reynolds completed a prolific career for South Bend Washington, going 95-18, winning an IHSAA State Champion and three conference titles.
- Reynolds ranked second in South Bend Washington history with 564 assists.
- Her 1,000th point came off an assist from Rashunda Jones.
- Sadly, due to an injury that ended her senior campaign in February, Reynolds will redshirt for the 2023-24 season.
- Despite sitting out drills, Gearlds has made a point to work with Reynolds during practice to ingrain her in the offense.

RANKED MATCHUPS

- Head coach Katie Gearlds has guided Purdue to three ranked wins during her time in West Lafayette. Purdue had lost its last 25 games to ranked opponents before the Gearlds era started.
- Purdue recorded back-to-back ranked wins for the first time since 2018 during the 2022-23 campaign.
- With a 73-65 win over No. 2 Ohio State in Columbus, the Boilermakers tallied their first ever top-five win on the road.
- Purdue snapped the program's 19-game skid to ranked teams with a 66-61 win over No. 17 Florida State last season.
- Gearlds was 23-22 against ranked teams during her playing days in West Lafayette.

THE NEXT GENERATION

- National Signing Day brought Purdue a trio of talented high schools seniors, as Katie Gearlds welcomed Jordyn Poole, Lana McCarthy and Kendall Puryear to the Boilermaker family.
- Out of Fort Wayne Snider High School, Poole is a 5-7 guard and a candidate for Indiana Miss Basketball. Poole was the No. 54 player in the nation and averaged 16.7 points, 3.6 rebounds and 4 assists per game as a junior. Her uncle is Purdue legend Roosevelt Barnes and cousin was Purdue Big Ten Player of the Year Caleb Swanigan.
- Puryear, a 6-2 forward from Lee's Summit, Mo., averaged 15.9 points, 9.9 rebounds and 1.6 assists per game as a junior to be ranked the No. 2 player in the state.
- McCarthy, a 6-4 forward from Bedford, N.H., is the No. 1 player in the state and averaged 21.7 points per game while reaching her third straight state championship game. McCarthy also won four straight volleyball state titles, set the state record for blocks and was named the New Hampshire Volleyball Player of the Year.

DOWN UNDER DOWNTOWN ABBEY

- Abbey Ellis is her final campaign in West Lafayette after honorable mention All-Big Ten nods each of the last two years.
- Ellis was one of the most clutch free throw shooters in the country last season finishing third nationally at 91.7% while leading the Big Ten overall.
- Ellis is one of Purdue's go-to options in tight situations averaging 11.7 points per game during her time in West Lafayette with a 45.6% clip from the field and 33.5% from behind the arc.
- She joined the 1,500-point club for her career last season.
- In the Big Ten Tournament quarterfinals against Iowa last year, Ellis made her 100th career start.
- She earned a spot on the Big Ten Honor Roll following wins over No. 22 Illinois and No. 2 Ohio State last season.
- Purdue's first Australian rocks a ribbon in her hair during games from a selection that her mother sends her to wear.
- The senior has also gained a following on TikTok \ @abbeye_22 with videos shared by BarstoolSports, Slam and more.

PACKING A PUNCH IN THE PORTAL

- While setting up her first true high school signing class, Katie Gearlds has found some instant impacts in the transfer portal during her time back at Purdue.
- Gearlds landed Abbey Ellis and Jeanae Terry mere weeks after she was hired on staff. Terry started every game for the Boilermakers during her first two seasons, while Ellis has been a spark plug that has lit up Mackey Arena on numerous occasions.
- Last season, Caitlyn Harper and Lasha Petree provided some much-needed veteran experience and scoring talent into the starting lineup. Petree paced Purdue with 14.7 points per game and Harper was one of 12 players in the Big Ten to average double figures and shoot over 50% from the field.
- Gearlds dipped back into the portal to bring two sisters to the program who played their freshman campaigns elsewhere. Alaina Harper joined after a rookie season at Grand Canyon, and Mila Reynolds made the move to West Lafayette after reaching the Elite Eight last season with Maryland.

BEEN THERE. THEY'RE BACK

- Purdue's coaching staff features a trio of alumnae who left their marks on the program during their playing days.
- Head coach Katie Gearlds was one of the best pure scorers in Purdue history, reaching four NCAA Tournaments, three Sweet 16s and an Elite Eight. She continues to rank in the top-10 of numerous career stat categories and was named an All-American in 2007 as a senior.
- 1999 National Champion and new associate head coach Kelly Komara returned to West Lafayette for her second stint on the sidelines. Komara was the 2002 Big Ten Defensive Player of the Year and helped the Boilermakers reach two national title games, winning the lone championship in Big Ten women's basketball.
- Alex Guyton is in her fifth season on staff and third as an assistant coach. Guyton reached three NCAA Tournaments and one the Big Ten championship her four-year career for the Boilermakers
- Another new addition to the coaching ranks at Purdue is dynamic recruiting assistant coach Mark Stephens. After spending the last five seasons on staff at Toledo and Xavier, Stephens returns to the state to lead the Boilermakers' posts and recruiting operations. Stephens' in-state ties run deep after serving as a coach at several high schools and managing Indiana Elite as well as other AAU programs.
- While they didn't play for Purdue, director of video and recruiting Lakan Hasser-Smith and graduate assistant Abby Downard are in-state products with deep ties to Katie Gearlds after playing their entire careers for her at Marian.
- Director of operations Amie Anthrop is well-accustomed to the bright lights of Purdue. After an award-winning career as a guard at Southern Indiana, she married Jade Anthrop, brother to Dru (basketball), Danny (football) and Jackson (football).

CAITLYN CASHING IN

- Caitlyn Harper is in her sixth and final year of her collegiate career, utilizing her extra season granted by the NCAA for the 2020-21 season.
- She finished third on the team in scoring with 10.4 points per game during her first season in West Lafayette.
- Harper was 1 of 11 players in the Big Ten averaging over 10 points per game while shooting 50% or better from the field.
- Harper paced Purdue with a season-high 20 points on the road at Penn State to top her 15 games in double figures.
- With her 10 points against Illinois, Harper joined the 1,500-point club for her career, following 1,286 points at Cal Baptist.
- The redshirt senior was named the 11th best transfer from a mid-major to a high-major by HerHoopsStats.com last year.
- The Hartland, Wisc., native came to Purdue after leading the WAC in scoring in 2021-22 with 17.7 points per game.
- Harper's honor haul also includes 2022 CoSIDA Academic All-America, 2021-22 WAC Player of the Year, 2021 WAC Tournament MVP.

PURDUE SPECIALTY STATS (PURDUE/OPP)

	Off TO	Paint	2nd-Ch.	Fast B.	Bench
UCLA	9-26	20-40	8-13	2-9	20-18
Southern	6-14	22-14	3-2	4-0	4-10
Texas A&M	26-7	34-22	8-9	7-4	20-13
Florida	15-10	30-24	7-12	4-2	17-10
Georgia	8-20	26-36	14-19	15-14	10-36
USI	19-12	36-26	10-6	11-0	36-16
Dayton	13-12	30-26	9-20	5-2	11-26
Valparaiso	17-17	32-20	5-0	18-7	45-21
SEMO	25-4	42-32	13-12	14-11	20-22
Minnesota	10-17	24-22	7-14	11-2	0-5
Notre Dame	6-26	14-44	4-13	5-26	14-18
Indiana State	19-15	22-22	12-13	6-0	22-30
Wisconsin					
Rutgers					
Maryland					
Iowa					
Penn State					
Indiana					
MSU					
Ohio State					
Nebraska					
Illinois					
Indiana					
Northwestern					
Nebraska					
MSU					
Wisconsin					
Penn State					
Michigan					
Totals	173-180	332-328	100-133	102-77	219-225
Averages	14.4-15.0	27.7-27.3	8.3-11.1	8.5-6.4	18.3-18.8

PURDUE SCORING BY CLASS

	Fr.	So.	Jr.	Sr.	5th/6th
UCLA	20	0	4	0	25
Southern	17	0	0	21	29
Texas A&M	22	0	0	8	42
Florida	10	0	13	0	26
Georgia	21	0	0	14	22
USI	38	2	8	16	31
Dayton	15	0	4	13	35
Valparaiso	47	6	6	10	14
SEMO	21	4	6	16	36
Minnesota	8	0	0	17	33
Notre Dame	13	2	4	2	18
Indiana State	24	7	2	11	35
Wisconsin					
Rutgers					
Maryland					
Iowa					
Penn State					
Indiana					
MSU					
Ohio State					
Nebraska					
Illinois					
Indiana					
Northwestern					
Nebraska					
MSU					
Wisconsin					
Penn State					
Michigan					
Totals	256	21	47	128	346
Averages	21.3	1.8	3.9	10.7	28.8



TOP PERFORMANCES *includes previous school

Triple-Double	23-24	Career
Jeanae Terry		2
Double-Double		
Jeanae Terry	1	15*
Caitlyn Harper	1	1
Mary Ashley Stevenson	1	1
Score 10+ Points		
Caitlyn Harper	7	88*
Abbey Ellis	11	79*
Madison Layden	8	44
Jeanae Terry		31*
Jayla Smith	1	15
Mary Ashley Stevenson	6	6
Rashunda Jones	4	4
Scored 20+ Points		
Abbey Ellis	3	24*
Caitlyn Harper	1	21*
Jeanae Terry		3*
Madison Layden	1	3
Rashunda Jones	2	2
Made 1 3-Pointer		
Abbey Ellis	10	81*
Madison Layden	9	71
Caitlyn Harper	7	29*
Jeanae Terry	2	26*
Jayla Smith	1	23
Sophie Swanson	4	4
Rashunda Jones	3	3
McKenna Layden	3	3
Emily Monson	3	3
McKenna Layden	1	1
Mary Ashley Stevenson	1	1
Mila Reynolds	1	1
Made 2+ 3-Pointers		
Madison Layden	7	50
Abbey Ellis	4	45*
Caitlyn Harper	2	23*
Jayla Smith		8
Jeanae Terry		7*
Rashunda Jones	2	2
McKenna Layden	1	1
Sophie Swanson	1	1
Recorded 10+ Rebounds		
Jeanae Terry	3	24*
Caitlyn Harper	1	11*
Abbey Ellis		2*
Mary Ashley Stevenson	2	2
Recorded 5+ Assists		
Jeanae Terry	6	63*
Madison Layden		14
Abbey Ellis	1	14*
Recorded 3+ Steals		
Jeanae Terry	2	26*
Abbey Ellis	4	22*
Madison Layden	2	21
Caitlyn Harper	1	8*
Jayla Smith		4
Recorded 3+ Blocks		
Caitlyn Harper		15*
Jayla Smith		1
Jeanae Terry		1*
Played a Complete Game		
Madison Layden		2
Caitlyn Harper		1*

BOILER NOTES**THE VOICE OF THE BOILERMAKERS**

- In his 34th season calling Purdue women's basketball, play-by-play man Tim Newton is closing in on his 1,000th game with Purdue women's basketball.
- He has called 999 games in his time with the Boilermakers.
- Purdue is 680-319 in games called by Newton. He has been on the air for 999 of Purdue's 1,470 total games.
- Newton has provided the call for all seven Big Ten regular season titles, all nine Big Ten Tournament Championships, three Final Fours and 25 of 27 NCAA Tournament appearances.
- Perhaps Newton's best call came in the final seconds of the 1999 National Championship as Purdue became the only Big Ten team to capture the national title.
- "Ladies and gentlemen, the national champion team resides in West Lafayette, Indiana, as Katie Douglas throws the ball skyward. It's over. Purdue wins 62-45, capturing the national championship."
- His first game was on WBAA (920 AM) on Jan. 3, 1991 when No. 3 Purdue downed Ohio State at Mackey Arena 105-45.
- Based on the best research available, Newton and LSU's play-by-play voice Patrick Wright will be the only active radio voices to reach 1,000 games called.

A WEEKEND FOR THE CHAMPS

- Purdue welcomed home its legendary 1998-99 team this weekend to celebrate the 25-year anniversary of the Big Ten's only national championship in women's basketball over the weekend of Nov. 10-12.
- The championship squad was honored in front of a sold-out Mackey Arena for the men's basketball game on Friday, before an on-field ceremony at the football game on Saturday. The weekend culminated with a halftime ceremony at the women's game in front of 5,002 fans on Sunday.
- Head coach Katie Gearlds unveiled a new trophy display for the Sears Trophy at the front of Mackey Arena, complete with photos and quotes of players from that magical year.
- A major piece from the celebration involved a Boilermaker who was gone too soon. Tiffany Young, a charismatic junior guard passed away four months after winning the title in a car accident. Throughout the 2023-24 season, Purdue will reopen the Tiffany Young Scholarship Endowment to provide a women's basketball student-athlete a scholarship in her name.

THE BIG TEN'S ONLY NATIONAL CHAMPIONS

- Led by National Coach of the Year Carolyn Peck, the Boilermakers finished the year with a program-best 34-1 record, a perfect 16-0 mark in Big Ten play, a Big Ten Tournament title and a 62-45 win in the National Championship Game over Duke.
- The 1998-99 season opened when Purdue knocked off three-time defending national champion and No. 1-ranked Tennessee at Mackey Arena 78-68.
- Stephanie White was named an All-American, the Honda Award winner and the Wade Trophy honoree, as well as the Big Ten Player and Athlete of the Year. Ukari Figs earned an honorable mention All-America nod and was named the 1999 Most Outstanding Player of the NCAA Tournament.
- The victory was bittersweet as guard Tiffany Young tragically died when she was killed by a drunk driver just over four months after winning the national championship. The 1998-99 team have continued to bring back their memories and love for Young over the last 25 years to ensure her impact on their lives will never be forgotten.

PROBOILERS

- Purdue has four players currently rostered on professional teams in Europe.
- Aya Traore, a teammate of Gearlds' during her playing time in West Lafayette, plays for Lleida in the Spanish LF2 Division.
- Ae'Rianna Harris, a 2020 Purdue graduate, is with Picken Claret in the Spanish LF2 Division.
- Andreona Keys signed to play for Arad in the Romanian Liga Nationala.
- Lasha Petree is suiting up for Vimpelin Veto in the Finnish Korisliiga.

SELLING OUT MACKEY

- For the third time in program history and the first since 2000, Mackey Arena sold out for a women's basketball game when the Boilermakers faced No. 4 Indiana last season.
- The crowd of 14,876 set a new record for the program and was the then-16th highest-attended game in Big Ten history.
- Following an Indiana-record 17,222 fans when Purdue and Indiana played on Feb. 19, the grand total of fans who watched the best rivalry in college basketball came to a record 32,098.
- The attendance, at the time, was the second largest on campus nation this season behind Missouri at South Carolina (15,444) and Florida at Oklahoma (19,236).
- Purdue was the fifth Big Ten team to go over 10,000 in attendance this season (Michigan, Maryland, Iowa, Indiana).
- In the regular season, Purdue played in the third and ninth most attended games in the nation last year.

BACK IN THE BIG DANCE

- The Boilermakers made their return to the NCAA Tournament for the 27th time in program history in 2022-23.
- Led by Carolyn Peck, the Boilermakers won the 1999 national title, the only women's basketball championship earned by a Big Ten program.
- In addition to the championship, Purdue has reached two title games (2001 loss to Notre Dame), three Final Fours, eight Elite Eights and 12 Sweet 16s.
- Six Boilermakers have been named to the Final Four All-Tournament Team, including 1999 Most Outstanding Player Ukari Figs.
- Eighteen players have garnered NCAA Regional All-Tournament Team honors, with Katie Gearlds garnering the laurel in 2007.
- Purdue has a 47-26 all-time record in March Madness.

A WINNING HISTORY

- Putting on the Old Gold & Black carries with it a standard that was set more than three decades ago when the Boilermakers lifted their first Big Ten title in 1991.
- Purdue is the only Big Ten team to win a national championship in women's basketball.
- Reaching the NCAA Tournament for the first time since 2016-17 last season with a bid to the First Four, the Boilermakers' 27 NCAA Tournament appearances are tied with Ohio State for second in the Big Ten behind Iowa's 29.
- With its last Big Ten Tournament title coming in 2013, Purdue owns the record for most league tourney championships with nine (1998-99-2000-03-04-07-08-12-13)
- Purdue has won seven Big Ten regular season championships, good for fourth in the league, with the last one coming in 2002.

SOMETHING ABOUT A TRUCK

- A heartfelt story told by the Big Ten Network during the 2022-23 season centered around Gearlds' relationship with her parents.
- As a freshman at Beech Grove High School, Gearlds made a deal with her parents that if she was named Indiana Miss Basketball, they would buy her the car of her dreams.
- Four years and an incredible high school career later, her father Tony traded in his truck to surprise Katie with a 2002 yellow Ford Mustang in the family garage. Tony took over Katie's 1988 Chevy Celebrity, driving it until the wheels fell off.
- In the summer of 2022, Katie returned the favor and surprised her dad to buy him any brand new he wanted. The only rule, it could not be red.

SISTER SISTER

Madison Layden - Feb. 7, 2002
McKenna Layden - Jan. 11, 2005
Age Gap - 1,069 days or 2 years, 11 months, 4 days
Parents - Kathie & Jeff Layden
Hometown - Kokomo, Ind.

- Madison and McKenna Layden are back together for the first time since Madison's senior year of high school in 2020, when the duo guided Northwestern to the 4A IHSA State Championship game.
- Their mother Kathie was the head coach of the basketball team assisted by their father Jeff. The Laydens won back-to-back state titles in 2018 and 2019.
- The tandem played basketball, volleyball and tennis together throughout their high school careers.
- Kathie won five Indiana State championships as a head coach, the most by a non-private school head coach, during her career that she retired from in 2023 after 23 seasons.
- Madison claimed a trio of sectional titles and back-to-back 3A state titles, before McKenna joined the high school ranks.
- McKenna owns the Northwestern High School record for points in a game with 47 off nine 3-pointers during her senior year.
- The Laydens were honored in a Hamburger Helper commercial when McKenna and Madison were children.
- Madison got engaged during the holiday break this year.



Mila Reynolds - July 1, 2003
Amiyah Reynolds - June 25, 2004
Age Gap - 360 days or 11 months, 24 days
Parents - Steve & Marcy Reynolds
Hometown - South Bend, Ind.

- After an impressive three years together at South Bend Washington, Mila and Amiyah Reynolds are reunited on the same roster after a year hiatus.
- Combined, the duo won the 2022 Class 3A State Championship and posted a 68-17 record together over three years.
- Mila finished her career with a 78-30 mark and amassed 2,099 career points, second in program history to Skylar Diggins-Smith.
- Amiyah was the No. 43 player in the nation and the second highest Big Ten signee in the class of 2023, per ESPN. She finished her career ranked second in assists with 564 and in the top 10 in points. Reynolds' senior season came to an abrupt ending due to an foot/ankle injury that will rule her out of the 2023-24 season.
- The unofficial third sister of the group is fellow South Bend Washington Panther Rashunda Jones who created an unstoppable backcourt with Amiyah. The duo went 95-18 over their four years on the court.
- Rashunda finished as the runner up for the 2023 Indiana Miss Basketball.
- Their father Steve was the head coach of South Bend Washington assisted by their mother Marcy, both of whom played professionally overseas.
- Mila and Amiyah are two of the seven Reynolds children.
- The Reynolds and Rashunda Jones have played together since grade school after attending church together as children.



Caitlyn Harper - Feb. 12, 2000
Alaina Harper - Dec. 4, 2003
Age Gap - 1,391 days or 3 years, 9 months, 22 days
Parents - Dale & Rhonda Harper
Hometown - Heartland, Wis.

- Due to the long age gap, Caitlyn and Alaina Harper will play on the same team for the first time in their lives.
- After Caitlyn had a standout career at Arrowhead High School, Alaina followed suit wearing the same No. 34 her sister wore.
- Prior to transferring to Purdue ahead of the 2022-23 season, Caitlyn was an all-conference player at Arrowhead before earning WAC Player of the Year honors at Cal Baptist.
- Alaina spent her freshman campaign at Grand Canyon following an all-conference career at Arrowhead.
- Their father Dale played collegiately at Bemidji State.
- Strong academics have always played a major role in their lives. Caitlyn was a 2022 CoSIDA All-American and earned a 3.9 GPA at Arrowhead. Alaina bettered that with a perfect 4.0 GPA in high school.



PURDUE IN THE POLLS

Week	AP	Coaches	NET
Preseason	-	-	-
Week 1	-	-	-
Week 2	-	-	-
Week 3	-	-	-
Week 4	-	-	-
Week 5	-	-	87
Week 6	-	-	84
Week 7	-	-	84
Week 8	-	-	84
Week 9	-	-	-
Week 10	-	-	-
Week 11	-	-	-
Week 12	-	-	-
Week 13	-	-	-
Week 14	-	-	-
Week 15	-	-	-
Week 16	-	-	-
Week 17	-	-	-
Week 18	-	-	-
FINAL	-	-	-

SINGLE-GAME RECORDS

SINGLE-GAME POINTS

Overall	41	Katie Gearlds	at Wisconsin	2/18/07
Senior	41	Katie Gearlds	at Wisconsin	2/18/07
Junior	37	MaChelle Joseph	at Michigan State	2/15/91
Sophomore	40	Shereka Wright	at Michigan	2/17/02
Freshman	34	Leslie Johnson	at Vanderbilt	12/5/93

SINGLE-GAME FIELD GOALS

Overall	16	MaChelle Joseph	at Michigan State	2/15/91
Senior	14	Jannon Roland	at Ohio state	1/23/97
Junior	16 <td>MaChelle Joseph</td> <td>at Michigan State</td> <td>2/15/91</td>	MaChelle Joseph	at Michigan State	2/15/91
Sophomore	15 <td>Shereka Wright</td> <td>at Michigan</td> <td>2/17/02</td>	Shereka Wright	at Michigan	2/17/02
Freshman	13 <td>Leslie Johnson</td> <td>Northwestern</td> <td>2/27/94</td>	Leslie Johnson	Northwestern	2/27/94

SINGLE-GAME 3-POINTERS

Overall	12	Brittany Rayburn	at Minnesota	1/12/12
Senior	12 <td>Brittany Rayburn</td> <td>at Minnesota</td> <td>1/12/12</td>	Brittany Rayburn	at Minnesota	1/12/12
Junior	7	Karissa McLaughlin	at Michigan State	1/30/20
Sophomore	9	2x, K. McLaughlin	Northwestern	2/17/19
Freshman	6	5x, Madison Layden	at Iowa	1/18/21

SINGLE-GAME FREE THROWS MADE

Overall	16	Shereka Wright	Penn State	1/16/03
Senior	13	2x, Shereka Wright	at Northwestern	2/15/04
Junior	16 <td>Shereka Wright</td> <td>Penn State</td> <td>1/16/03</td>	Shereka Wright	Penn State	1/16/03
Sophomore	14	3x, Courtney Moses	at Northwestern	1/26/12
Freshman	14	Leslie Johnson	Ohio State	2/13/94

SINGLE-GAME REBOUNDING

Overall	25	Leslie Schultz	at Miami (OH)	12/2/81
Senior	20 <td>Joy Holmes</td> <td>at Wisconsin</td> <td>1/27/91</td>	Joy Holmes	at Wisconsin	1/27/91
Junior	25 <td>Leslie Schultz</td> <td>at Miami (OH)</td> <td>12/2/81</td>	Leslie Schultz	at Miami (OH)	12/2/81
Sophomore	20 <td>Cathey Tyree</td> <td>at Michigan State</td> <td>1/11/85</td>	Cathey Tyree	at Michigan State	1/11/85
Freshman	23 <td>Natasha Cender</td> <td>Michigan</td> <td>2/7/76</td>	Natasha Cender	Michigan	2/7/76
Offensive	12 <td>Joy Holmes</td> <td>Minnesota</td> <td>2/10/91</td>	Joy Holmes	Minnesota	2/10/91
Defensive	16	2x, Whitney Bays	at Dayton	12/7/14

SINGLE-GAME ASSISTS

Overall	16	MaChelle Joseph	Northern Illinois	3/22/92
Senior	16 <td>MaChelle Joseph</td> <td>Northern Illinois</td> <th>3/22/92</th>	MaChelle Joseph	Northern Illinois	3/22/92
Junior	14 <td>Lisa Jahner</td> <td>Michigan</td> <td>3/7/87</td>	Lisa Jahner	Michigan	3/7/87
Sophomore	12 <td>MaChelle Joseph</td> <td>New Mexico State</td> <td>12/29/89</td>	MaChelle Joseph	New Mexico State	12/29/89
Freshman	11	3x, K. McLaughlin	Penn State	1/28/18

SINGLE-GAME BLOCKS

Overall	11	Danielle Campbell	Butler	11/17/07
Senior	9 <td>Ae/Rianna Harris</td> <td>at #5 South Carolina</td> <td>12/15/19</td>	Ae/Rianna Harris	at #5 South Carolina	12/15/19
Junior	11 <td>Danielle Campbell</td> <td>Butler</td> <td>11/17/07</td>	Danielle Campbell	Butler	11/17/07
Sophomore	7	3x, Ae/Rianna Harris	Lamar	11/18/17
Freshman	7	2x, Nora Kiesler	at Penn State	1/30/16

SINGLE-GAME STEALS

Overall	12	Joy Holmes	Minnesota	1/13/89
Senior	9 <td>Michelle Duhart</td> <td>Michigan State</td> <td>2/24/00</td>	Michelle Duhart	Michigan State	2/24/00
Junior	10 <td>Cherelle George</td> <td>South Carolina</td> <td>11/26/05</td>	Cherelle George	South Carolina	11/26/05
Sophomore	12 <td>Joy Holmes</td> <td>Minnesota</td> <td>1/13/89</td>	Joy Holmes	Minnesota	1/13/89
Freshman	8 <td>FahKara Malone</td> <td>Illinois</td> <td>2/8/07</td>	FahKara Malone	Illinois	2/8/07

WINNING MARGINS**When Leading**

Largest Margin of Victory	38, vs. Southern Indiana, 11/26/23
Largest Overall Lead	43, vs. Southern Indiana, 11/26/23
Largest Halftime Lead	23, vs. SEMO, 12/6/23
Largest Lead in a Loss	5, vs. Georgia, 11/22/23
Largest Halftime Lead in a Loss	
Largest Purdue Run	18, vs. SEMO, 12/6/23

When Trailing

Largest Margin of Defeat	43, at UCLA, 11/6/23
Largest Overall Deficit	45, at UCLA, 11/6/23
Largest Halftime Deficit	28, at UCLA, 11/6/23
Largest Deficit Overcome to Win	8, vs. Texas A&M, 11/16/23
Largest Halftime Deficit in a Win	
Largest Opponent Run	10, at UCLA, 11/6/23

Games When the Margin is

	Win	Loss
1 Point		
2 Points		1
3 Points		1
4 Points		
5 Points		
6 Points		
7 Points		
8 Points	1	1
9 Points		
10-19 Points	3	
20-29 Points	2	
30+ Points	1	2

HONORS AT PURDUE**Abbey Ellis**

Team Captain for first season - 2023-24
All-Big Ten Honorable Mention - 2021-22, 2022-23

Caitlyn Harper

Team Captain for first time - 2023-24

Rashunda Jones

Big Ten Freshman of the Week - Nov. 20

Madison Layden

Team Captain for third season - 2021-2024

Jeanae Terry

Team Captain for third season - 2021-2024
Second Team All-Big Ten - 2022-23
Big Ten All-Defensive Team - 2022-23

RECORDS WATCH

• Check out which Boilermakers are climbing the single-season and career charts this year.

CAREER ASSISTS AT PURDUE

1. MaChelle Joseph	628	1989-92
2. Stephanie White	578	1996-99
3. Katie Douglas	526	1998-01
4. Lisa Jahner	517	1985-88
5. April Wilson	515	2013-16
6. FahKara Malone	513	2007-10
7. Erika Valek	479	2001-04
8. KK Houser	455	2010-14
9. Jeanae Terry	442	2022-Present
10. Jennifer Jacoby	427	1992-95
11. Sharon Versyp	418	1985-88
12. Ukari Figgs	409	1996-99
13. Kelly Komara	402	1999-02
14. Katie Gearlds	399	2004-07

CAREER ASSIST TO TURNOVER RATIO AT PURDUE (MIN. 200 ASTS)

1. Jeanae Terry	1.96	2022-Present
2. April Wilson	1.68	2013-16
3. Jennifer Jacoby	1.64	1992-95
Katie Gearlds	1.64	2004-07
5. Karissa McLaughlin	1.54	2018-2021
6. Lisa Jahner	1.46	1985-88
Madison Layden	1.42	2021-Present
8. Cindy Lamping	1.40	1992-95
9. Dominique Oden	1.38	2017-20
10. Ukari Figgs	1.37	1996-99

CAREER FREE THROW PERCENTAGE AT PURDUE (MIN. 175 ATT)

1. Courtney Moses	90.6 - 290-320	2011-14
2. Abbey Ellis	87.8 - 202-220	2022-Present
3. Karissa McLaughlin	86.7 - 176-203	2017-21
4. Katie Gearlds	86.3 - 314-364	2004-07
5. Ukari Figgs	84.1 - 359-427	1996-99
6. Brittany Rayburn	82.1 - 538-665	2009-12
Drey Mingo	82.1 - 183-223	2010-13

CAREER 3-POINTERS

1. Karissa McLaughlin	244	2018-21
2. Courtney Moses	240	2011-14
3. Katie Gearlds	238	2004-07
4. Cassidy Hardin	214	2019-23
5. Brittany Rayburn	201	2009-12
6. Dominique Oden	193	2017-20
7. Jodi Howell	188	2006-10
8. Stephanie White	183	1996-99
9. Ashley Morrissette	181	2014-17
10. Ukari Figgs	174	1996-99
11. Madison Layden	171	2021-Present

CAREER TRIPLE-DOUBLES

1. Jeanae Terry	2	2022-Present
-----------------	---	--------------

CAREER NON-POINT DOUBLE-DOUBLES

1. Jeanae Terry	3	2022-Present
-----------------	---	--------------

2023-24 ROSTER

No.	Name	Yr.	Pos.	Ht.	Hometown/High School/Previous School
1	Amiyah Reynolds	Fr.	G	6-0	South Bend, Ind. / South Bend Washington
2	Rashunda Jones	Fr.	G	5-8	South Bend, Ind. / South Bend Washington
3	Jayla Smith	Jr.	G	6-0	Indianapolis, Ind. / Lawrence North
10	Jeanae Terry	5th	G	5-11	Detroit, Mich. / Wayne Memorial / Illinois
11	McKenna Layden	Fr.	G	6-2	Kokomo, Ind. / Northwestern
15	Mila Reynolds	So.	F	6-3	South Bend, Ind. / South Bend Washington / Maryland
20	Mary Ashley Stevenson	Fr.	F	6-2	New York City, N.Y. / The Dalton School
21	Emily Monson	Fr.	G	6-1	Murfreesboro, Tenn. / Blackman
23	Abbey Ellis	5th	G	5-6	Melbourne, Australia / Our Lady of Mercy / Cal Poly
31	Sophie Swanson	Fr.	G	5-10	Barrington, Ill. / Barrington Prep
32	Alaina Harper	So.	F	6-3	Hartland, Wis. / Arrowhead / Grand Canyon
33	Madison Layden	Sr.	G	6-1	Kokomo, Ind. / Northwestern
34	Caitlyn Harper	6th	F	6-3	Hartland, Wis. / Arrowhead / Cal Baptist

Name	Position	Year at Purdue	Year Coaching	Alma Mater
Katie Gearlds	Head Coach	3rd Year	11th Year	Purdue - '07
Kelly Komara	Associate Head Coach	1st Year / 3rd Year*	20th Year	Purdue - '02
Mark Stephens	Assistant Coach / Recruiting	1st Year	7th Year	Morehead State - '02
Alex Guyton	Assistant Coach	5th Year	7th Year	Purdue - '12
Tiffini Grimes	Deputy Athletic Director / SWA	2nd Year		Purdue - '05
Amie Anthrop	Director of Operations	1st Year		Southern Indiana - '11
Chaz Calloway	Director of Strength & Conditioning	1st Year		Cincinnati - '14
Jessica Lipsett	Director Athletic Training and Physical Therapy	21st Year		Illinois - '00
Lakan Hasser-Smith	Director Video/Recruiting Assistant	2nd Year		Marian - '16
Abby Downard	Graduate Assistant	1st Year		Marian - '21

*Served on staff from 2014-16

Amiyah Reynolds	ah-MY-yah	Alaina Harper	ah-LAY-na
Rashunda Jones	ra-SHUN-da	Katie Gearlds	soft g (like the first name)
Mila Reynolds	MEE-la	Kelly Komara	kom-AIR-ah

Associate Head Coach Kelly Komara

Alma Mater: Purdue '02 | **Season at Purdue/Career:** 1st/3rd/20th
Select Experience: Marquette - Assistant (22-23), Vanderbilt - Associate Head Coach (19-21), Vanderbilt - Assistant (17-18), Purdue - Assistant (15-16)
Select Highlights: 1999 National Champion, 2002 Big Ten Defensive Player of the Year, 3-time All-Big Ten selection, 4 NCAA Tournaments, 2 National Championship Games, 5 Big Ten titles, father has been an Indiana high school football coach for over 50 years

Assistant Coach Mark Stephens

Alma Mater: Morehead State '02 | **Season at Purdue/Career:** 1st/7th
Select Experience: Toledo - Assistant (20-23), Xavier - Assistant (17-19), Crispus Attucks - Head Coach (2012-16), Indiana Elite - Club Director
Select Highlights: Helped Toledo to three MAC titles and an NCAA Appearance, mentored numerous Indiana Miss Basketball winners during his AAU coaching career

Assistant Coach Alex Guyton

Alma Mater: Purdue '12 | **Season at Purdue/Career:** 5th/7th
Select Experience: Purdue - Director of Player Development (19-21), Eastern Illinois - Assistant (17-19), Carmel HS - Assistant (14-17)
Select Highlights: Played 124 games won a pair of Big Ten Tournament titles, 3 NCAA Tournaments and an Elite Eight, coached Michigan's Amy Dilk while at Carmel



1 AMIYAH REYNOLDS



2 RASHUNDA JONES



3 JAYLA SMITH



10 JEANAE TERRY



11 MCKENNA LAYDEN



15 MILA REYNOLDS



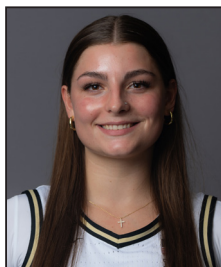
20 MARY ASHLEY STEVENSON



21 EMILY MONSON



23 ABBEY ELLIS



31 SOPHIE SWANSON



32 ALAINA HARPER



33 MADISON LAYDEN



34 CAITLYN HARPER



KATIE GEARLDS



KELLY KOMARA



MARK STEPHENS



ALEX GUYTON



KATIE GEARLDS

HEAD COACH | 3RD SEASON AT PURDUE | 11TH SEASON OVERALL | PURDUE '07

@katiegearlds4
@katiegearlds4

Year	Overall	BIG	Non-Con.	BIG Tourny	NCAAs	WNIT	Home	Road	Neutral	vs. Top-25	Unranked
2021-22	17-15	7-11	9-2	0-1	-	1-1	11-6	5-7	1-2	1-6	16-9
2022-23	19-11	9-8	9-1	1-1	0-1	-	10-4	6-4	3-2	2-6	17-4
2023-24	7-5	0-1	7-4	-	-	-	5-0	1-3	0-2	0-2	5-3
Totals	43-31	16-20	25-7	1-2	0-1	1-1	27-10	12-14	4-7	3-14	40-16
Pct.	.581	.444	.781	.333	.000	.500	.730	.461	.364	.176	.714

GEARLDS' YEAR-BY-YEAR

Year	School	Overall	Conf.	Post.	Rank
2013-14	Marian	16-16	8-10	-	-
2014-15	Marian	28-6	14-4	NAIA R32	-
2015-16	Marian	32-6	16-2	NAIA Champ	No. 1
2016-17	Marian	35-3	17-1	NAIA Champ	No. 1
2017-18	Marian	32-3	17-1	NAIA R16	No. 8
2018-19	Marian	27-7	16-2	NAIA R32	No. 17
2019-20	Marian	31-3	16-2	NAIA R16	No. 13
2020-21	Marian	27-6	16-0	NAIA R32	No. 9
2021-22	Purdue	17-15	7-11	WNIT 2nd Rd	-
2022-23	Purdue	19-11	9-8	NCAA First Four	-
2023-24	Purdue	7-5	0-1	-	-
11th Year		271-81	16-20	-	-

GEARLDS' TIMELINE

2021-Present	Head Coach, Purdue
2013-21	Head Coach, Marian
2013	Toyota Huelva, Spain
2011-12	Orion Ibaizabal Galdakao, Portugal
2010	FEA Neas Halkindonas, Greece
2008	Kosit Kosice, Slovakia
2007-09	Seattle Storm, WNBA
2003-07	All-America Guard, Purdue
1999-03	All-America Guard, Beech Grove High School

POWER 5 COACHES UNDER 40

Age	Name	School	Birthdate
36	Jacie Hoyt	Oklahoma State	4/2/1987
38	Kelly Rae Finley	Florida	4/27/1985
39	Katie Gearlds	Purdue	10/26/1984
39	Carolyn Kieger	Penn State	8/17/1983

GEARLDS IN THE PURDUE RECORD BOOK

Stat	Rank	Total	Year/Game
Single Game Points	1	41	Wisconsin, 2/18/07
Season Points	T1	707	2006-07
Career Points	4	1,974	2004-07
Career Average	4	14.8	2004-07
Season 10+ Point Games	3	33	2006-07
Career 10+ Point Games	4	102	2004-07
Season 30+ Point Games	2	4	2006-07
Career 30+ Point Games	2	6	2004-07
Season Field Goals	2	250	2006-07
Career Field Goals	3	711	2004-07
Season 3-Pointers	T1	88	2006-07
Career 3-Pointers	3	238	2004-07
Season Asst/TO	1	2.57	2005-06
Career Asst/TO	T2	1.64	2004-07
Season Minutes	1	1,359	2006-07
Career Minutes	2	4,475	2004-07

AN IMPACT BACK IN WEST LAFAYETTE

- In two seasons back at her alma mater, Katie Gearlds has guided the Boilermakers back to the postseason twice.
- After posting a 19-win campaign in 2022-23, Gearlds joined the elite company of Carolyn Peck and Lin Dunn as the only Boilermaker head coaches to post win improvements in each of their first two campaigns.
- The Boilermakers made their return to the NCAA Tournament for the first time since 2017 with a bid to the First Four last year.
- Prior to her arrival, Purdue had dropped its last 19 games against a ranked opponent. In two seasons, Gearlds has racked up three, including the program's first AP top-5 win in a true road game against No. 2 Ohio State in 2022-23.
- Katie Gearlds reached the 250-win plateau for her career against Harvard, reaching the feat in 315 career games.

HITTING THE RECRUITING TRAIL

- The 2023-24 freshmen made up Gearlds' first true recruiting class through an entire cycle.
- Landing five signees in November of 2022, the 2023 class ranked No. 21 in the nation, before Gearlds welcomed in top-50 player Amiyah Reynolds to the program the following May.
- A former Indiana Miss Basketball, Gearlds has placed a major emphasis on recruiting and ensuring the best talent in the state comes to Purdue.
- Gearlds has also found success in the transfer portal with Jeanae Terry and Abbey Ellis garnering All-Big Ten nods, while Lasha Petree and Caitlyn Harper powered the offense in 2022-23.

THE JOB SO FAR

- Gearlds guided the Boilermakers on another step forward in 2022-23, making the NCAA Tournament for the first time since 2017.
- After having a full offseason to prepare, the Boilermakers went 19-11 and tallied a pair of ranked wins over No. 22 Illinois and No. 2 Ohio State.
- The Katie Gearlds era started sooner than expected in 2021-22, when she took over the program a mere 47 days prior to the season opener.
- Purdue finished 17-15 on the year, winning 10 more games than the previous campaign. It was the best win improvement by first-year head coach at Purdue and the third best in program history.
- The Boilermakers finished 10-2 in the non-conference, marking the second-best clip by a first-year head coach.
- The Boilermakers reached the postseason for the first time since 2017-18, ending the campaign in the second round of the WNIT.

COACHING EXPERIENCE

- Spent eight seasons taking Marian University winning back-to-back NAIA National Championships in 2016 and 2017.
- Went 228-50 record, an 82% clip with the Knights.
- Three-time NAIA National Coach of the Year, won 10 total Crossroads League titles and made seven appearances in the NAIA Tournament.
- Guided 12 WBCA NAIA All-America selections, compared to just five in the first 37 years of the program's existence.

PROFESSIONAL CAREER

- Played professionally over six seasons
- Spent three seasons in the WNBA with the Seattle Storm,
- Was taken with the seventh overall pick in the 2007 WNBA Draft, the highest selection ever from Purdue
- Two of her closest teammates and friends over the years are WNBA legend Sue Bird and fellow WNBA great and New Orleans Pelicans Vice President of Basketball Operations Swin Cash.
- Gearlds is the highest draft pick in Purdue history, going seventh overall to the Seattle Storm in 2007.

ALL-AMERICAN AT PURDUE CAREER

- Was a three-year starter from 2004-07.
- Ranks fourth in program history with 1,974 points and was the ninth fastest to join the 1,000-point club.
- Named a Legend of Mackey Arena for the 50th season.
- Won two Big Ten Tournament titles and never missed the NCAA Tournament with Gearlds in the squad
- Reached three Sweet 16s and one Elite Eight.
- Set the Purdue single-game record with 41 points at Wisconsin on Feb. 18, 2007, and scored 707 points to tie the single-season program record.
- 2007 Third Team AP All-America WBCA Honorable Mention
- Four-time All-Big Ten and the 2004 Big Ten Freshman of the Year.
- Earned a bachelor's degree in sociology and minored in psychology and communications from Purdue in 2007.

ONE-OF-A-KIND PREP CAREER

- Named the Indiana Miss Basketball in 2003.
- Amassed 2,521 career points, good for sixth in IHSAA history.
- Averaged 30.1 points, 9.4 rebounds, 5.4 assists and 5.1 steals per game to lead Beach Grove High School to the 2003 Class 3A State Championship.
- Nike/WBCA All-America, First Team All-State and the Gatorade Indiana Player of the Year.
- A McDonald's All-American, was named the MVP of the McDonald's All-America Game the same season as a young talent from Akron, Ohio - LeBron James.

INSPIRED BY GREATNESS

- Gearlds has a deep bench of basketball legends who have touched and continue to influence her career.
- One of the few people who can say they've worked with two G.O.A.T.s, Gearlds was the MVP of the 2003 McDonald's All-America Game with LeBron James.
- Sue Bird, her teammate with the Storm and a mentor over the last 15 years, inspired Gearlds to go into coaching.
- She also shared the court in Seattle with Swin Cash (V.P. New Orleans Pelicans), Adia Barnes (Arizona head coach) and Lauren Jackson (owner Melbourne Boomers).
- She competed against Chris Paul in the skills challenge ahead of the 2003 McDonald's All-America Game.

AN INDIANA LEGEND

- One of the best products of Indiana basketball, Gearlds claimed a state title, a Big Ten championship and a national title with programs from the Crossroads State.
- Named Indiana Miss Basketball as a senior at Beech Grove in 2003, Gearlds guided the Hornets to a 3A state championship, setting a state record across all classes with 33 points in the final. Today, she ranks 11th in state history with 2,521 career points.
- As a Boilermaker from 2003-07, Gearlds reached the NCAA Tournament four times, won two Big Ten Tournament titles, sits fourth in Purdue history with 1,974 career points and holds the record for points in a season with 707 with Stephanie White.
- Following a six-year professional career, Gearlds took over the reins at Marian in Indianapolis, posting a 227-49 record over eight years, winning three NAIA Coach of the Year honors and claiming two national championships.

KG ERA BESTS

MOST POINTS SCORED

1.	101	vs. Denver	12/12/21
2.	100	vs. SIUE	11/17/22
3.	95	vs. Southern Indiana	11/26/23
4.	90	vs. Murray St.	11/13/22
5.	89	vs. Illinois	1/20/22

MOST POINTS ALLOWED

1.	92	at UCLA	11/6/23
2.	86	vs. Maryland	12/08/21
	83	vs. Indiana	02/19/23
4.	83	vs. Iowa	12/29/22
5.	81	vs. Nebraska	1/30/22

FEWEST POINTS ALLOWED

1.	50	vs. Southern	11/12/23
2.	51	vs. Illinois State	12/11/22
3.	52	vs. Florida	11/20/23
	52	at Illinois	1/26/23
	52	vs. Georgia Tech	12/1/21

LARGEST MARGIN OF VICTORY

1.	42	vs. SIUE	11/17/22
2.	38	vs. Southern Indiana	11/26/23
3.	33	vs. North Ala.	12/21/21
	33	vs. Denver	12/12/21
5.	29	vs. Murraray St.	11/13/22

MOST FIELD GOALS MADE

1.	38	vs. Denver	12/12/21
	38	vs. Southern Indiana	11/26/23
3.	37	vs. North Ala.	12/21/21
4.	35	vs. SIUE	11/17/22
	35	vs. Murray St.	11/13/22

HIGHEST FIELD GOAL PERCENTAGE

1.	.633	vs. Denver	12/12/21
2.	.607	vs. Harvard	11/24/22
3.	.576	vs. Southern Indiana	11/26/23
4.	.569	vs. Southern Ill.	3/16/22
5.	.565	vs. SIUE	11/17/22

LOWEST FIELD GOAL PERCENTAGE ALLOWED

1.	.275	vs. Minnesota	1/21/23
2.	.281	vs. Southern	11/12/23
3.	.293	vs. Illinois St.	12/11/22
4.	.317	vs. Indiana St.	11/20/22
5.	.318	vs. North Ala.	12/21/21

MOST 3-POINTERS MADE

1.	15	vs. Illinois	1/20/22
2.	13	vs. Ohio St.	1/29/23
	13	vs. Denver	12/12/21
4.	12	vs. Florida St.	11/25/22
	12	vs. Maryland	12/8/21
	12	vs. Florida St.	11/27/21

HIGHEST 3-POINT PERCENTAGE

1.	.652	vs. Illinois	1/20/22
2.	.600	vs. St. John's (NY)	3/16/23
3.	.500	vs. Denver	12/12/21
	.500	vs. Indiana State	12/20/23
5.	.474	3x last vs. S. Indiana	11/26/23

FEWEST 3-POINTERS ALLOWED

1.	0	vs. Rutgers	1/2/22
	0	vs. Iowa	1/13/22
3.	1	vs. Marshall	11/22/21
	1	vs. Illinois	2/17/22
5.	2	vs. West Virginia	11/25/21
	2	vs. Michigan St.	1/9/22

LOWEST 3-POINT PERCENTAGE ALLOWED

1.	.000	vs. Rutgers	1/2/22
	.000	vs. Iowa	1/13/22
3.	.059	vs. Marshall	11/22/21
4.	.077	vs. Illinois	2/17/22
5.	.111	vs. Michigan St.	1/9/22

MOST FREE THROWS MADE

1.	26	vs. Northwestern	2/12/23
2.	25	vs. SIUE	11/17/22
3.	22	vs. Western Ky.	11/10/21
4.	21	vs. Marshall	11/22/21
	21	vs. Southern	11/12/23

MOST ASSISTS

1.	26	vs. North Ala.	12/21/21
2.	25	vs. Murray St.	11/13/22
3.	24	vs. Western Mich.	11/14/21
	24	vs. Southern Indiana	11/26/23
5.	23	vs. Miami (OH)	12/19/21
	23	vs. Denver	12/12/21

FEWEST ASSISTS ALLOWED

1.	5	vs. Southern	11/12/23
	5	vs. Florida	11/20/23
3.	6	vs. Marshall	11/22/21
4.	7	3x last vs. Syracuse	11/30/22

MOST REBOUNDS

1.	50	vs. Michigan St.	12/5/22
2.	47	vs. North Ala.	12/21/21
3.	46	vs. Valparaiso	12/3/23
4.	45	vs. Illinois	2/17/22
4.	44	vs. Syracuse	11/30/22
	44	vs. Southern	11/12/23

MOST DEFENSIVE REBOUNDS

1.	39	vs. Michigan St.	12/5/22
2.	38	vs. Valparaiso	12/3/23
3.	37	vs. Southern	11/12/23
4.	35	vs. Syracuse	11/30/22
5.	34	vs. Southern Ill.	3/16/22
	34	vs. North Ala.	12/21/21

MOST OFFENSIVE REBOUNDS

1.	18	vs. Illinois	2/17/22
	18	vs. Miami (OH)	12/19/21
3.	17	vs. West Virginia	11/25/21
4.	16	vs. Marshall	11/22/21
5.	15	vs. Wisconsin	3/2/23
	15	vs. Nebraska	1/30/22

MOST STEALS

1.	16	vs. Wisconsin	1/11/23
2.	14	vs. SIUE	11/17/22
3.	13	vs. Northwestern	1/14/23
	13	vs. Denver	12/12/21
5.	12	3x last vs. Western Ky.	11/10/21

MOST BLOCKS

1.	9	vs. Iowa	3/3/23
	9	vs. Indiana	2/6/22
3.	8	vs. Northwestern	2/24/22
	8	vs. Illinois St.	11/17/21
5.	7	vs. Rutgers	2/9/23

FEWEST TURNOVERS

1.	7	vs. Murray State	11/13/22
2.	8	vs. Minnesota	1/21/23
	8	at Texas A&M	12/21/22
4.	9	vs. Texas A&M	11/16/23
	9	vs. Minnesota	1/27/22
	9	at Michigan	1/24/22

MOST POINTS SCORED BY A PLAYER

1.	31	Lasha Petree, vs. Syracuse	11/30/22
2.	29	Abbey Ellis, vs. SIUE	11/17/22
3.	27	Brooke Moore, vs. Southern Ill.	3/16/22
4.	26	Abbey Ellis, vs. Ohio St.	1/29/23
	26	Lasha Petree, vs. Minnesota	2/26/23

MOST FIELD GOALS MADE BY A PLAYER

1.	13	Lasha Petree, vs. Syracuse	11/30/22
2.	10	Brooke Moore, vs. Southern Ill.	3/16/22
	10	Lasha Petree, vs. Minnesota	2/26/23
4.	9	9x last Abbey Ellis, vs. Texas A&M	11/16/23

MOST 3-POINTERS MADE BY A PLAYER

1.	7	Cassidy Hardin, vs. Denver	12/12/21
2.	6	Abbey Ellis, vs. Illinois	1/20/22
	6	Cassidy Hardin, vs. Florida St.	11/27/21
	6	Brooke Moore, vs. Maryland	12/8/21
5.	5	6x last Lasha Petree, vs. Indiana	2/19/23

MOST FREE THROWS MADE BY A PLAYER

1.	9	Abbey Ellis, vs. Western Ky.	11/10/21
	9	Jeanae Terry, vs. Miami (OH)	12/10/21
3.	8	Abbey Ellis, vs. SIUE	11/17/22
	8	Caitlyn Harper, vs. Nebraska	1/18/23
	8	Ava Learn, vs. Oklahoma St.	11/26/22
	8	Rashunda Jones, vs. Valparaiso	12/3/23

MOST REBOUNDS BY A PLAYER

1.	17	Jeanae Terry, vs. Wisconsin	2/13/22
	17	Jeanae Terry, vs. Illinois	2/17/22
3.	14	Jeanae Terry, vs. Illinois	1/26/23
4.	13	Jeanae Terry, vs. Ohio St.	12/5/21
	13	Jeanae Terry, vs. Harvard	11/24/22

MOST ASSISTS BY A PLAYER

1.	12	Jeanae Terry, vs. Minnesota	1/27/22
	12	Jeanae Terry, vs. Northwestern	2/24/22
	12	Jeanae Terry, vs. Indiana St.	11/20/22
4.	11	Abbey Ellis, vs. Western Mich.	11/14/21
5.	10	7x last Jeanae Terry, vs. Texas A&M	11/16/23

MOST STEALS BY A PLAYER

1.	8	Jeanae Terry, vs. Penn St.	2/22/23
2.	6	Madison Layden, vs. Rutgers	2/20/22
3.	5	Abbey Ellis, vs. Western Mich.	11/14/21
	5	Jeanae Terry, vs. Nebraska	1/30/22
	5	Jeanae Terry, vs. Wisconsin	1/1/23
	5	Jeanae Terry, vs. Wisconsin	3/2/23

MOST BLOCKS BY A PLAYER

1.	4	Caitlyn Harper, vs. Marshall	11/10/22
	4	Caitlyn Harper, vs. Michigan	1/10/23
	4	Rickie Woltman, vs. Illinois St.	11/17/21
4.	3	9x last Rickie Woltman, vs. Iowa	3/3/23

MOST POINTS ALLOWED BY A PLAYER

1.	32	Naz Hillmon, at Michigan	1/24/22
2.	31	Makenna Marisa, Penn St.	2/9/22
3.	27	Monika Czinano, Iowa	1/13/22
	27	Lauren Van Kleunen, at Marquette	3/21/22
5.	26	4x last Teisha Hyman, Syracuse	11/30/22

KG'S RECORD VS. OPPONENTS

Illinois	3-0
Indiana	0-4
Iowa	0-3
Maryland	0-2
Michigan	0-2
Michigan State	2-1
Minnesota	2-2
Nebraska	0-2
Northwestern	2-2
Ohio State	1-1
Penn State	2-1
Rutgers	3-0
Wisconsin	2-2
Big Ten	17-22
Florida State	1-1
Georgia Tech	1-0
Notre Dame	0-1
Syracuse	1-0
ACC	3-2
Oklahoma State	1-0
West Virginia	0-1
Big 12	1-1
UCLA	0-1
Pac-12	0-1
Florida	0-1
Georgia	0-1
Texas A&M	2-0
SEC	2-2
Marquette	0-1
St. John's	0-1
Big East	0-2
Miami	1-0
Western Michigan	1-0
MAC	2-0
Illinois State	2-0
Indiana State	2-0
Murray State	1-0
Southern Illinois	1-0
Valparaiso	1-0
Missouri Valley	7-0
Denver	1-0
Summit	1-0
North Alabama	1-0
ASUN	1-0
Harvard	1-0
Ivy	1-0
Marshall	2-0
Sun Belt	2-0
Western Kentucky	1-0
C-USA	1-0
Southeast Missouri State	1-0
Southern Illinois Edwardsville	1-0
Southern Indiana	1-0
Ohio Valley	3-0
Southern	1-0
SWAC	1-0
Dayton	1-1
A-10	1-1

2023-24 PURDUE WOMEN'S BASKETBALL GAME NOTES

TEAM GAME-BY-GAME COMPARISON

All Games	W/L	FG-FGA	FG%	3P-3PA	3%	FT-FTA	FT%	Off.	Def.	Tot.	F	Pts.	Ast.	TO	Stl.	Blk.
Purdue	L	17-50	.340	4-21	.190	11-14	.786	8	14	22	13	49	8	19	6	2
UCLA	92-49	35-64	.547	13-28	.464	9-12	.750	16	24	40	18	92	29	15	10	4
Purdue	W	20-51	.392	6-20	.300	21-26	.808	7	37	44	16	67	19	21	7	2
Southern	67-50	16-57	.281	4-16	.250	14-21	.667	5	23	28	24	50	5	16	12	3
Purdue	W	27-58	.466	5-15	.333	13-16	.813	8	23	31	14	72	14	9	7	3
Texas A&M	72-58	20-56	.357	6-17	.353	12-18	.667	17	24	41	15	58	12	20	8	6
Purdue	L	18-57	.316	2-22	.091	11-13	.846	12	28	40	15	49	5	16	6	1
Florida	52-49	18-57	.316	4-16	.250	12-13	.923	10	27	16	52	5	14	4	2	2
Purdue	L	21-57	.368	6-19	.316	9-10	.900	11	20	31	13	57	8	17	6	1
Georgia	65-57	26-65	.400	2-9	.222	11-15	.733	18	25	43	13	65	9	15	15	2
Purdue	W	34-59	.576	9-19	.474	18-23	.783	9	30	39	16	95	24	10	9	4
Southern Indiana	95-57	21-50	.350	4-20	.200	11-14	.786	11	18	29	19	57	11	13	3	3
Purdue	W	22-55	.400	7-15	.467	16-21	.762	10	30	40	11	67	13	18	8	6
Dayton	67-59	25-72	.347	5-15	.333	4-5	.800	18	27	45	19	59	10	18	4	4
Purdue	W	28-57	.491	8-24	.333	19-24	.792	8	38	46	16	93	20	21	10	3
Valparaiso	83-56	19-55	.345	8-23	.348	10-16	.625	1	24	25	22	56	8	20	13	2
Purdue	W	31-65	.477	10-25	.400	11-17	.647	13	28	41	13	83	19	10	8	4
SEMO	83-57	23-60	.383	2-7	.286	9-11	.818	10	24	34	15	57	9	17	7	1
Purdue	L	22-53	.415	7-17	.412	7-10	.700	10	31	41	14	58	16	19	7	4
Minnesota	60-58	24-67	.358	5-19	.263	7-12	.583	14	24	38	15	60	13	8	6	2
Purdue	W	14-57	.246	4-15	.267	7-8	.875	7	22	29	15	39	8	21	8	3
Notre Dame	76-39	31-61	.508	3-11	.273	11-13	.846	9	36	45	16	76	19	17	11	8
Purdue	W	27-57	.474	11-22	.500	14-20	.700	14	23	37	21	79	20	16	8	5
Indiana State	79-63	21-56	.375	5-19	.26.3	16-21	.762	14	16	30	18	63	9	18	7	2
Purdue																
Wisconsin																
Purdue																
Rutgers																
Purdue																
Maryland																
Purdue																
Iowa																
Purdue																
Penn State																
Purdue																
Indiana																
Purdue																
Michigan State																
Purdue																
Ohio State																
Purdue																
Nebraska																
Purdue																
Illinois																
Purdue																
Indiana																
Purdue																
Northwestern																
Purdue																
Nebraska																
Purdue																
Michigan State																
Purdue																
Wisconsin																
Purdue																
Penn State																
Purdue																
Michigan																
Purdue																
Purdue																
Purdue																
Purdue																



TEAM STATISTICS BREAKDOWN

All Games	Record	FG-FGA	FG%	3P-3PA	3%	FT-FTA	FT%	Off.	Def.	Tot.	Avg.	F	DQ	Ast.	TO	Blk.	Stl.	Pts.	Avg.
All Games	7-5	281-676	.416	79-234	.338	157-202	.777	117	324	441	36.8	177	1	174	197	38	90	798	66.5
		279-730	.382	61-200	.305	126-171	.737	143	292	435	36.3	210	2	139	191	39	100	745	62.1
Home	6-0	167-347	.481	49-125	.392	96-126	.762	59	179	238	39.7	96	0	116	87	21	49	479	79.8
		120-344	.349	29-102	.284	72-101	.713	58	129	187	31.2	113	2	54	104	17	50	341	56.8
Away	1-3	75-215	.349	22-68	.324	41-53	.774	35	97	132	33.0	53	0	45	77	15	29	213	53.3
		115-264	.436	26-73	.356	31-42	.738	57	111	168	42.0	68	0	71	58	18	31	287	71.8
Neutral	0-2	39-114	.342	8-41	.195	20-23	.870	23	48	71	35.5	28	1	13	33	2	12	106	53.0
		44-122	.361	6-25	.240	23-28	.821	28	52	80	40.0	29	0	14	29	4	19	117	58.5
Won	7-0	189-402	.470	56-140	.400	112-147	.762	69	209	278	39.7	107	0	129	105	27	57	546	78.0
		145-416	.349	34-117	.291	76-106	.717	76	156	232	33.1	132	2	64	122	21	54	400	57.1
Lost	0-5	92-274	.336	23-94	.245	45-55	.818	48	115	163	32.6	70	1	45	92	11	33	252	50.4
		134-314	.427	27-83	.325	50-65	.769	67	136	203	40.6	78	0	75	69	18	46	345	69.0

Big Ten	Record	FG-FGA	FG%	3P-3PA	3%	FT-FTA	FT%	Off.	Def.	Tot.	Avg.	F	DQ	Ast.	TO	Blk.	Stl.	Pts.	Avg.
All Games	0-1	22-53	.415	7-17	.412	7-10	.700	10	31	41	41.0	14	0	16	19	4	7	58	58.0
		24-67	.358	5-19	.263	7-12	.583	14	24	38	38.0	15	0	13	8	2	6	60	60.0
Home																			
Away	0-1	22-53	.415	7-17	.412	7-10	.700	10	31	41	41.0	14	0	16	19	4	7	58	58.0
		24-67	.358	5-19	.263	7-12	.583	14	24	38	38.0	15	0	13	8	2	6	60	60.0

Non-Conference Record	Record	FG-FGA	FG%	3P-3PA	3%	FT-FTA	FT%	Off.	Def.	Tot.	Avg.	F	DQ	Ast.	TO	Blk.	Stl.	Pts.	Avg.
All Games	7-4	259-623	.416	72-217	.332	150-192	.781	107	293	400	36.4	163	1	158	178	34	83	740	67.3
		255-663	.385	56-181	.309	119-159	.748	129	268	397	36.1	195	2	126	183	37	94	685	62.3

Current Streak Record	Record	FG-FGA	FG%	3P-3PA	3%	FT-FTA	FT%	Off.	Def.	Tot.	Avg.	F	DQ	Ast.	TO	Blk.	Stl.	Pts.	Avg.
Overall	1-0	27-57	.474	11-22	.500	14-20	.700	14	23	37	37.0	21	0	20	16	5	8	79	79.0
		21-56	.375	5-19	.263	16-21	.762	14	16	30	30.0	18	0	9	18	2	7	63	63.0

Month	Record	FG-FGA	FG%	3P-3PA	3%	FT-FTA	FT%	Off.	Def.	Tot.	Avg.	F	DQ	Ast.	TO	Blk.	Stl.	Pts.	Avg.
November	3-3	137-332	.413	32-116	.276	83-102	.814	55	152	207	34.5	87	1	78	92	13	41	389	64.8
		136-359	.379	33-106	.311	69-93	.742	77	141	218	36.3	105	1	71	93	20	52	374	62.3
December	4-2	144-344	.419	47-118	.398	74-100	.740	62	172	234	39.0	90	0	96	105	25	49	409	68.2
		143-371	.385	28-94	.298	57-78	.731	66	151	217	36.2	105	1	68	98	19	48	371	61.8

January																			
February																			
March																			

Ranked/UR	Record	FG-FGA	FG%	3P-3PA	3%	FT-FTA	FT%	Off.	Def.	Tot.	Avg.	F	DQ	Ast.	TO	Blk.	Stl.	Pts.	Avg.
vs. Ranked	0-2	31-107	.290	8-36	.222	18-22	.818	15	36	51	25.5	28	0	16	40	5	14	88	44.0
		66-125	.528	16-39	.410	20-25	.800	25	60	85	42.5	34	0	48	32	12	21	168	84.0
vs. Unranked	7-3	250-569	.439	71-198	.359	139-180	.772	102	288	390	39.0	149	1	158	157	33	76	710	71.0
		213-605	.352	45-161	.280	106-146	.726	118	232	350	35.0	176	2	91	159	27	79	577	57.7

5-Game	Record	FG-FGA	FG%	3P-3PA	3%	FT-FTA	FT%	Off.	Def.	Tot.	Avg.	F	DQ	Ast.	TO	Blk.	Stl.	Pts.	Avg.
1-5	2-3	103-273	.377	23-97	.237	65-79	.823	46	122	168	33.6	71	1	54	82	9	32	294	58.8
		115-299	.385	29-86	.337	58-79	.734	66	123	189	37.8	86	1	60	80	17	49	317	63.4
6-10	4-1	137-289	.474	41-100	.410	71-95	.747	50	157	207	41.4	70	0	92	78	21	42	386	77.2
		112-314	.357	24-84	.286	41-58	.707	54	117	171	34.2	90	1	51	76	12	33	289	57.8
11-15	1-1	41-114	.360	15-37	.405	21-28	.750	21	45	66	33.0	36	0	28	37	8	16	118	59.0
		52-117	.444	8-30	.267	27-34	.794	23	52	75	37.5	34	0	28	35	10	18	139	69.5

16-20																			
21-25																			
26-30																			
31-35																			
36-40																			

Postseason	Record	FG-FGA	FG%	3P-3PA	3%	FT-FTA	FT%	Off.	Def.	Tot.	Avg.	F	DQ	Ast.	TO	Blk.	Stl.	Pts.	Avg.
Overall																			
BIG Tourney																			
NCAA																			



TEAM HIGHS & LOWS

Stat	Purdue High	Purdue Low	Opp. High	Opp. Low
Points	95 Southern Ind. (11/26/2023)	39, at Notre Dame (12/17/2023)	92 at UCLA (11/06/2023)	50 Southern U. (11/12/2023)
Field Goals Made	34 Southern Ind. (11/26/2023)	14, at Notre Dame (12/17/2023)	35 at UCLA (11/06/2023)	16 Southern U. (11/12/2023)
Field Goal Attempts	65 vs. SEMO (12/6/2023)	50 at UCLA (11/06/2023)	72 at Dayton (12/1/2023)	55 vs. Valparaiso (12/3/2023)
Field Goal Percentage	.576 (34-59) Southern Ind. (11/26/2023)	.246 (14-57), at Notre Dame (12/17/2023)	.547 (35-64) at UCLA (11/06/2023)	.200 (4-20) Southern Ind. (11/26/2023)
3-Pointers Made	11, vs. Indiana State (12/20/2023)	2 vs Florida (N) (11/20/2023)	13 at UCLA (11/06/2023)	2 2x last vs. SEMO (12/6/2023)
3-Pointers Attempted	25 vs. SEMO (12/6/2023)	15 3x last, at Notre Dame (12/17/2023)	28 at UCLA (11/06/2023)	7 vs. SEMO (12/6/2023)
3-Point Percentage	.500 (11-22), vs. Indiana State (12/20/2023)	.091 (2-22) vs Florida (N) (11/20/2023)	.464 (13-28) at UCLA (11/06/2023)	.222 (2-9) vs Georgia (N) (11/22/2023)
Free Throws Made	21 Southern U. (11/12/2023)	7, 2x last, at Notre Dame (12/17/2023)	16, vs. Indiana State (12/20/2023)	4 at Dayton (12/1/2023)
Free Throws Attempted	26 Southern U. (11/12/2023)	10 at Minnesota (12/10/2023)	21, 2x last, vs. Indiana State (12/20/2023)	5 at Dayton (12/1/2023)
Free Throw Percentage	.900 (9-10) vs Georgia (N) (11/22/2023)	.647 (11-17) vs. SEMO (12/6/2023)	.923 (12-13) vs Florida (N) (11/20/2023)	.583 (7-12) at Minnesota (12/10/2023)
Rebounds	46 vs. Valparaiso (12/3/2023)	22 at UCLA (11/06/2023)	45 at Dayton (12/1/2023)	25 Valparaiso (12/03/2023)
Assists	24 Southern Ind. (11/26/2023)	5 vs Florida (N) (11/20/2023)	29 at UCLA (11/06/2023)	5 2x last vs Florida (N) (11/20/2023)
Steals	10 vs. Valparaiso (12/3/2023)	6 vs Georgia (N) (11/22/2023)	15 vs Georgia (N) (11/22/2023)	3 Southern Ind. (11/26/2023)
Blocks	6 at Dayton (12/1/2023)	1 vs Georgia (N) (11/22/2023)	8, at Notre Dame (12/17/2023)	1 vs. SEMO (12/6/2023)
Turnovers	21 3x last, at Notre Dame (12/17/2023)	9 Texas A&M (11/16/2023)	20 2x last vs. Valparaiso (12/3/2023)	8 at Minnesota (12/10/2023)
Fouls	21, vs. Indiana State (12/20/2023)	11 at Dayton (12/1/2023)	24 Southern U. (11/12/2023)	13 vs Georgia (N) (11/22/2023)

INDIVIDUAL HIGHS

Stat	Purdue Ind. High	Opponent Ind. High
Points	28, Abbey Ellis, vs. Indiana State (12/20/2023)	23, Hannah Hidalgo, at Notre Dame (12/17/2023)
Field Goals Made	9, 2x last Caitlyn Harper, vs. SEMO (12/6/2023)	9, Hannah Hidalgo, at Notre Dame (12/17/2023)
Field Goals Attempted	18, Abbey Ellis vs Texas A&M (11/16/2023)	20, Hannah Hidalgo, at Notre Dame (12/17/2023)
3-Pointers Made	4, 4x last Madison Layden, at Minnesota (12/10/2023)	6, Londynn Jones, at UCLA (11/6/2023)
3-Pointers Attempted	9, Abbey Ellis, vs. Georgia (11/22/2023)	11, Londynn Jones, at UCLA (11/6/2023)
Free Throws Made	9, Abbey Ellis, vs. Indiana State (12/20/2023)	7, Aliyah Matharu, vs. Florida (11/20/2023)
Free Throws Attempted	11, Abbey Ellis, vs. Indiana State (12/20/2023)	8, Lauren Ware vs Texas A&M (11/16/2023)
Rebounds	15, Caitlyn Harper, at Minnesota (12/10/2023)	13, Lauern Ware vs Texas A&M (11/16/2023)
Assists	11, Jeanae Terry, vs. SEMO (12/6/2023)	10, Kiki Rice, at UCLA (11/6/2023)
Steals	4, Abbey Ellis, vs. Indiana State (12/20/2023)	4, 3x last Raevan Raye-Redmond, vs. Valparaiso (12/3/2023)
Blocks	2, 2x last Caitlyn Harper, at Minnesota (12/10/2023)	6, Natalija Marshall, at Notre Dame (12/17/2023)

RESULTS/LEADERS

Date	P / O	Opponent	W/L	Score	High Scorer	High Rebounds	High Assists	High Steals	High Blocks	Attend
N6	-/4	at UCLA	L	92-49	10, Ellis/Harper	7, Terry	4, Terry	1, 5 tied	1, Harper/Stevenson	2,157
NI2	-/-	Southern	W	67-50	21, Layden	11, Terry	7, Terry	3, Ellis/Layden	1, Stevenson/Jones	5,002
N16	-/RV	Texas A&M	W	72-58	20, Jones/Ellis	11, Harper	10, Terry	3, Terry	1, 3 tied	5,223
N20	Bahamas -/-	vs. Florida	L	52-49	14, Ellis	6, Stevenson	2, Terry	3, Ellis	1, Stevenson	437
N22	Bahamas -/-	vs. Georgia	L	65-57	14, Layden	6, Ellis	4, Terry	2, Harper	1, Harper	278
N26	-/-	Southern Indiana	W	95-57	19, Ellis	6, 3 tied	8, Terry	3, Terry	1, 4 tied	3,683
D1	-/-	at Dayton	W	67-59	21, Ellis	8, Terry	4, Terry	3, Harper	2, Terry	3,250
D3	-/-	Valparaiso	W	83-56	22, Jones	10, Stevenson	4, 3 tied	3, Layden	2, Stevenson	5,305
D6	-/-	SEMO	W	83-57	22, Harper	10, Terry	11, Terry	2, Ellis/Layden	1, 4 tied	3,412
D10	Big Ten -/-	at Minnesota	L	60-58	17, Layden	15, Terry	9, Terry	3, Ellis	2, Harper	3,834
D17	-/14	at Notre Dame	L	76-39	8, Ellis	6, Stevenson	2, Ellis, Layden	2, Ellis	1, 3 tied	9,149
D20	-/-	Indiana State	W	79-63	28, Ellis	8, Stevenson	5, Terry	4, Ellis	1, 5 tied	7,177
D30	Big Ten -/-	Wisconsin								
J2	Big Ten -/-	Rutgers								
J6	Big Ten -/-	at Maryland								
J10	Big Ten -/-	Iowa								
J18	Big Ten -/-	at Penn State								
J21	Big Ten -/-	Indiana								
J24	Big Ten -/-	at Michigan State								
J28	Big Ten -/-	Ohio State								
J31	Big Ten -/-	at Nebraska								
F5	Big Ten -/-	Illinois								
F11	Big Ten -/-	at Indiana								
F14	Big Ten -/-	at Northwestern								
F17	Big Ten -/-	Nebraska								
F25	Big Ten -/-	at Wisconsin								
F28	Big Ten -/-	Penn State								
M3	Big Ten -/-	at Michigan								

LEADERBOARD

Led in Points	23-24	Career	Led in Rebounds	23-24	Career	Led in Assists	23-24	Career	Led in Steals	23-24	Career	Led in Blocks	23-24	Career
Abbey Ellis	7	26	Jeanae Terry	6	43	Jeanae Terry	11	61	Madison Layden	3	34	Jayla Smith	4	22
Madison Layden	3	13	Madison Layden		9	Madison Layden	1	21	Jeanae Terry	3	33	Madison Layden	5	22
Caitlyn Harper	2	6	Abbey Ellis	2	5	Abbey Ellis	1	6	Abbey Ellis	7	17	Caitlyn Harper	6	15
Rashunda Jones	2	2	Caitlyn Harper	1	4	Rashunda Jones	1	1	Jayla Smith	1	10	Jeanae Terry	3	14
Jayla Smith		2	Mary Ashley Stevenson	4	4	Emily Monson	1	1	Caitlyn Harper	3	6	Abbey Ellis	1	6
			McKenna Layden	1	1				Mary Ashley Stevenson	1	1	Mary Ashley Stevenson	5	5
									McKenna Layden	1	1	Rashunda Jones	2	2
												Emily Monson	1	1
												Mila Reynolds	1	1
												Alaina Harper	1	1

THE LAST TIME A PLAYER**INDIVIDUAL SCORING**

Scored 20 Points:	28, Abbey Ellis vs. Indiana State (12/20/23)
Scored 30 Points:	31, Lasha Petree vs. Syracuse (11/30/22)
Scored 35 Points:	38, Brittany Rayburn at Minnesota (1/12/12)
Scored 40 Points:	41, Katie Gearlds at Wisconsin (2/18/07)
Scored 20 Points in Back-to-Back Games:	Lasha Petree 23 vs. Penn State (2/22/23), 26 at Minnesota (2/26/23)
Scored 20 Points in Three Straight Games:	Lasha Petree 23 vs. Indiana (2/19/23), 23 vs. Penn State (2/22/23) 26 at Minnesota (2/26/23)
Two Players w/ 20+:	20, Rashunda Jones and Abbey Ellis vs. Texas A&M (11/16/23)
Three Players w/ 20+:	Whitney Bays (24), KK Houser (21), Liza Clemons (20) & Courtney Moses (20) vs. Central Michigan (12/28/13)
Four Players w/ 20+:	Whitney Bays (24), KK Houser (21), Liza Clemons (20) & Courtney Moses (20) vs. Central Michigan (12/28/13)
Five Players in Double Figures:	Karissa McLaughlin (23), Kayana Traylor (15), Ae'Rianna Harris (13), Dominique Oden (12), Jenelle Grant (11) vs. Illinois (1/17/20)
10+Points in 10 Straight Games:	10, Abbey Ellis (11/6/23-Present)
10+Points in 20 Straight Games:	35, Shereka Wright (11/29/01 - 12/29/02)
10+Points in 30 Straight Games:	35, Shereka Wright (11/29/01 - 12/29/02)

INDIVIDUAL DOUBLE-DOUBLES

Double-Double:	11 ast, 10 reb, Jeanae Terry, vs. SEMO (12/6/23)
Points-Rebounds:	14-10, Mary Ashley Stevenson, vs. Valparaiso (12/3/23)
Points-Assists:	19-11 Karissa McLaughlin at Wisconsin (12/31/18)
Points-Steals:	27-12, Joy Holmes vs. Minnesota (1/13/89)
Points-Blocks:	12-11, Danielle Campbell vs. Butler (11/17/07)
Freshman:	14-10 reb, Mary Ashley Stevenson, vs. Valparaiso (12/3/23)
Non-Point:	10 reb, 11 ast, Jeanae Terry, vs. SEMO (12/6/23)
20-10 Game:	21 pts, 12 rebs, Ae'Rianna Harris vs. PSU (1/26/20)
30-10 Game:	30 pts, 10 reb, Stephanie White vs. Washington (3/14/98)
20-20 Game:	29 pts, 20 reb, Joy Holmes at Wisconsin (1/27/91)
Consecutive Double-Doubles:	2, Jeanae Terry (11/10-13/22)
in Three Straight Games:	4, Fatou Diagne, (1/18-1/31)
in Five Straight Games:	9, Whitney Bays (12/20/14 - 1/19/15)
Two Players with a Double-Double:	11 pts, 12 reb, Fatou Diagne, 15 pts, 10 reb, Ae'Rianna Harris, vs. Michigan State (3/5/20)
Three Players with a Double-Double:	Ae'Rianna Harris (14 pts, 17 rebs) & Tamara Farquhar (13 pts, 14 rebs), vs. Western Illinois (11/17/20)

INDIVIDUAL TRIPLE-DOUBLES

Triple-Double:	10 pts, 11 rebs, 12 assts - Jeanae Terry - vs. Minnesota (1/27/22)
Before that	11 pts, 12 rebs, 10 assts - Jeanae Terry - vs. Miami (12/19/21)
Before that	12 pts, 11 rebs, 11 blks - Danielle Campbell - vs. Butler (11/17/07)
Before that	20 pts, 11 rebs, 10 assts - Stephanie White - vs. Indiana (1/22/99)

INDIVIDUAL FIELD GOALS

Made 13 Field Goals:	13, Lasha Petree vs. Syracuse (11/30/22)
Made 15 Field Goals:	15, Shereka Wright at Michigan (2/17/02)
Attempted 20 Field Goals:	20 Lasha Petree 26 at Minnesota (2/26/23)
Attempted 25 Field Goals:	25, KK Houser vs. Penn State (1/30/14)
Attempted 30 Field Goals:	33, MaChelle Joseph at Wisconsin (2/21/92)

INDIVIDUAL 3-POINTERS

Made Six 3-Pointers:	6, Abbey Ellis at Illinois (1/20/22)
Made Seven 3-Pointers:	7, Cassidy Hardin vs. Denver (12/12/21)
Made Eight 3-Pointers:	9, Karissa McLaughlin vs. NU (2/17/19)
Attempted 12 3-Pointers:	12, Cassidy Hardin at Nebraska (1/30/22)
Attempted 13 3-Pointers:	14, Madison Layden vs. Ohio State (12/5/21)
Made a 3-Pointer in 20 Straight Games:	24, Madison Layden (12/9/20-11/17/21) 23, Cassidy Hardin (3/10/21-2/4/22)

INDIVIDUAL FREE THROWS

Made 13 FTs:	14, Courtney Moses at Northwestern (1/26/12)
Made 15 FTs:	15, Ukari Figgs vs. Washington (3/14/98)
Attempted 16 FTs:	18, Brittany Rayburn vs. Gardner-Webb (12/21/09)
Attempted 18 FTs:	18, Brittany Rayburn vs. Gardner-Webb (12/21/09)
Attempted 20 FTs:	20, Shereka Wright at Northwestern (2/15/04)

INDIVIDUAL STEALS

Grabbed Five Steals:	5, Jeanae Terry vs. Wisconsin (3/2/23)
Grabbed Six Steals:	8, Jeanae Terry vs. Penn State (2/22/23)
Grabbed Seven Steals:	8, Jeanae Terry vs. Penn State (2/22/23)
Grabbed Eight Steals:	8, Jeanae Terry vs. Penn State (2/22/23)

INDIVIDUAL REBOUNDS

Grabbed 15 Rebounds:	15, Jeanae Terry at Minnesota
Grabbed 16 Rebounds:	17, Jeanae Terry vs. Illinois (2/17/22)
Grabbed 17 Rebounds:	17, Jeanae Terry vs. Illinois (2/17/22)
Grabbed 18 Rebounds:	18, Fatou Diagne vs. Penn State (1/31/21)
Grabbed 19 Rebounds:	19, Whitney Bays vs. Ohio State (1/25/15)
Grabbed 20 Rebounds:	20, Joy Holmes at Wisconsin (1/27/91)
Grabbed Eight Off. Rebounds:	9, Jeanae Terry at Wisconsin (2/13/22)
10+ Rebounds in Three Straight Games:	3, Ae'Rianna Harris (11/17/19-11/29/19)
Two Players with 10+ Rebounds in a Game:	Tamara Farquhar (14) & Ae'Rianna Harris (17) vs. Western Illinois (11/17/19)
Three Players 10+ Rebounds in a Game:	Bridget Perry (11), Whitney Bays (11) & Liza Clemons (13) vs. Northwestern (2/11/15)

INDIVIDUAL ASSISTS

Dished Out 10 Assists:	10, Jeanae Terry vs. Texas A&M (11/16/23)
Dished Out 11 Assists:	12, Jeanae Terry vs. Indiana State (11/20/22)
Dished Out 12 Assists:	12, Jeanae Terry vs. Indiana State (11/20/22)
Dished Out 5+ Assists in Five Straight Games:	11 Jeanae Terry (11/20/22-12/29/22)
Dished Out 10+ Assists in Two Straight Games:	Jeanae Terry vs. Marshall (11/10/22) & Murray State (11/14/22)

INDIVIDUAL BLOCKED SHOTS

Posted Five Blocks:	7, Ae'Rianna Harris vs. Michigan State (3/5/20)
Posted Six Blocks:	7, Ae'Rianna Harris vs. Michigan State (3/5/20)
Posted Seven Blocks:	7, Ae'Rianna Harris vs. Michigan State (3/5/20)
Posted Eight Blocks:	9, Ae'Rianna Harris at South Carolina (12/15/19)
Blocked 5+ Shots in Back-to-Back Games:	Ae'Rianna Harris vs. UT Martin, 5 (12/18/17), Saint Mary's, 5 (12/20/17) & at Rutgers, 7 (12/28/17)

INDIVIDUAL MINUTES

Played a Complete Game:	Madison Layden vs. Michigan State (3/3/22)
Played at Least 40 Minutes:	Jeanae Terry vs. Michigan State (12/4/22)
Played Every Minute of an Overtime Game:	Dominique Oden (45) Karissa McLaughlin (45) at Rutgers (1/16/19)
Freshman Played 40 Minutes:	Madison Layden (40) vs. Rutgers (2/14/21)
Freshman Played a Complete Game:	Madison Layden (40) vs. Rutgers (2/14/21)
Played Consecutive Complete Games:	Kayana Traylor, 2 vs. Michigan (2/11/21)

INDIVIDUAL FOULS

Technical Foul - Player:	Ra Shaya Kyle vs. Florida State (11/27/21)
Technical Foul - Coach:	Katie Gearlds vs. SIUE (11/17/22)
Fouled Out:	Madison Layden vs. Iowa (3/3/23)
Two Players Fouled Out:	Ra Shaya Kyle, Fatou Diagne vs. Michigan (2/11/21)
Three Players Fouled Out:	Tamara Farquhar, Ae'Rianna Harris & Dominique Oden vs. South Carolina (12/16/18 - 2/0T)

THE LAST TIME PURDUE

TEAM SCORING (GAME)

Won by 40+:	42 (80-38) at Ball State (11/7/18)
Won by 40+ (Big Ten):	43 (88-45) vs. Nebraska (1/26/17)
Lost by 20+:	37 (76-39) at Notre Dame (12/17/23)
Lost by 30+:	37 (76-39) at Notre Dame (12/17/23)
Scored 90+:	95 vs. (95-57) vs. Southern Indiana (11/26/23)
Scored 90+ (Big Ten):	91 at Penn State (12/20/20)
Scored 100+:	100 vs. SIUE (11/17/22)
Scored 100+ (Big Ten):	110 (110-51) at Michigan (3/12/94)
Scored 40 or Fewer:	39 at Notre Dame (12/17/23)
Scored 50 or Fewer:	39 at Notre Dame (12/17/23)
Scored 50 or Fewer and Won:	48 (48-46) at IUPUI (3/15/18)
Allowed 90+:	92 at UCLA (11/6/23)
Allowed 90+ (Big Ten):	100 at Ohio State (2/18/21)
Allowed 100+:	100 at Ohio State (2/18/21)
Allowed 50 or Fewer:	50, at Ohio State (12/28/19)
Allowed 40 or Fewer:	38 at Ball State (11/7/18)

TEAM SCORING (HALF)

Scored 60 in the First Half:	68 vs. Kent State (12/8/90)
Scored 60 in the Second Half:	60 vs. South Alabama (12/27/94)
Scored 50 Points or More:	50 (2nd), vs. Valparaiso (12/3/23)
Scored 15 Points or Less:	15 (1st) vs. No. 18 Indiana (1/14/21)
Scored 20 Points or Less:	18 (1st) at Notre Dame (12/17/23)
Allowed 50+:	50 (2nd) at UCLA (11/6/23)
Allowed 15 Points or Less:	15 (1st) at Wisconsin (2/13/22)
Allowed 20 Points or Less:	19 (1st) vs. Southern (11/12/23)

TEAM SCORING (QUARTER)

Scored 30+:	35 (1st) vs. Southern Indiana (11/26/23)
Scored 25+:	26 (3rd) vs. Indiana State (12/20/23)
Scored 10 Points or Less:	7 (3rd) at Notre Dame (12/17/23)
Scored 5 Points or Less:	2 (3rd) vs. Indiana (2/5/23)
Allowed 30+:	32 (4th) vs. Penn State (2/9/22)
Allowed 25+:	26 (3rd) at Notre Dame (12/17/23)
Allowed 10 Points or Less:	7 (1st) at Minnesota (12/10/2023)
Allowed 5 Points or Less:	2 (1st) at Wisconsin (2/13/22)

TEAM SHOOTING

Shot 65% or Higher:	.735 (36-59) vs. Penn State (1/28/18)
Shot 60% or Higher:	.607 (34-56) vs. Harvard (11/24/22)
Shot 55% or Higher:	.576 (34-59) vs. Southern Indiana (11/26/23)
Shot 50% or Higher:	.576 (34-59) vs. Southern Indiana (11/26/23)
Shot 30% or Lower:	.246 (14-57) at Notre Dame (12/17/23)
Shot 25% or Lower:	.246 (14-57) at Notre Dame (12/17/23)
Shot 35% or Lower and Won:	.308 (20-65) vs. Wisconsin (1/21/21)
Opponent Shot 55% or Higher:	.582 (39-67) at Ohio State (2/18/21)
Opponent Shot 50% or Higher:	.508 (31-61) at Notre Dame (12/17/23)
Opponent Shot 30% or Lower:	.281 (16-57) vs. Southern (11/12/23)
Opponent Shot 25% or Lower:	.242 (16-66) at Rutgers (2/19/17)

TEAM 3-POINT SHOOTING

Made 10+:	11, vs. Indiana State (12/20/23)
Made 12+:	15 at Illinois (1/20/22)
Made 15+:	15 vs. Central Michigan (12/28/13), at Illinois (1/20/22)
Made 0:	0 vs. Valparaiso (12/6/20)
Attempted 25+:	25, vs. SEMO (12/6/23)
Attempted 30+:	30 at Rutgers (2/9/23)
Attempted Five or Less:	4 at UCLA (11/6/23)
Shot 50%+:	.500 (11-22) vs. Indiana State (12/20/23)
Shot 60%+:	.600 (6-10) vs. St. John's (3/16/23)

TEAM FREE THROW SHOOTING

Made 25+:	26 vs. Southern (11/12/23)
Made 30+:	32 vs. DePaul (11/21/10)
Made Five or Less:	2 at Rutgers (2/9/23)
Made All Attempted:	7-7 at No. 5 Indiana (2/6/22)
Attempted 30+:	36 vs. SIUE (11/17/22)
Attempted 40+:	41 vs. Minnesota (1/18/04)
Attempted 10 or Less:	8 at Notre Dame (12/17/23)
Attempted Five or Less:	3 at Rutgers (2/9/23)

TEAM REBOUNDS

Had 20+ Rebound Margin:	21 (46-25), vs. Valparaiso (12/3/23)
Had 25+ Rebound Margin:	30 (55-25) vs. USC Upstate (11/17/16)
Outrebounded by 20+:	24 (50-26) vs. No. 8 Maryland (2/25/21)
Outrebounded by 25+:	28 (28-56) at Notre Dame (12/29/13)

TEAM ASSISTS

Had 25:	25 vs. Murray State (11/13/22)
Had 30:	31 vs. Incarnate Word (12/10/15)
Had Five or Fewer:	5 at Indiana (3/6/21)

TEAM TURNOVERS

Committed 10 or Fewer:	10, vs. SEMO (12/6/23)
Committed 20+:	21 at Notre Dame (12/17/23)
Forced 10 or Fewer:	8 at Ohio State (2/18/21)
Forced 20+:	26 vs. Wisconsin (1/1/23)

TEAM CLOSE GAMES

One-Point Games:	L, 76-75 vs. Florida State (11/25/22)
Two-Point or less Games:	L, 60-58 at Minnesota (12/10/2023)
Three-Point or less Games:	L, 52-49 vs. Florida (11/20/23)
Back-to-Back Games Decided by Three Points or Less:	L, 63-65 (OT) at Rutgers (1/16/19); W 56-53 vs. Indiana (1/20/19)
Last Second Shot to Win:	Jeanae Terry, 2, vs. Georgia Tech (12/1/21)
Lost on a Last Second Shot:	Jeanae Terry, 2, vs. Rutgers (1/3/22)
	Shyanne Sellers, 3-pt vs. Maryland (12/8/22)

TEAM OVERTIME

Overtime Game:	W, 76-71 vs. Michigan State (12/4/22)
Double Overtime Game:	L, 73-82 vs. South Carolina (12/16/18)
Triple Overtime Game:	W, 82-75 vs. Nebraska (2/2/12)
Consecutive Overtime Games:	W, 90-88 at Minnesota (1/22/15); L, 71-79 vs. Ohio State (1/25/15)

TEAM COMEBACKS

Came Back from 10+ Down to Win:	18 - W, 57-55 vs. Wisconsin (3/2/23) (3/2/23; down 30-12 w/ 4:27 left in the 2nd)
Came Back from 15+ Down to Win:	18 - W, 57-55 vs. Wisconsin (3/2/23) (3/2/23; down 30-12 w/ 4:27 left in the 2nd)

TEAM RANKED OPPONENTS

Beat a Ranked Team:	#2 Ohio State (1/29/23)
Beat Back-to-Back Ranked Team:	#22 Illinois, 62-52 (1/26/23)
Beat a Ranked Team on the Road:	#2 Ohio State (1/29/23)
Beat a Top-10 Ranked Team:	at #2 Ohio State (1/29/23)
Beat a Top-10 Ranked Team on the Road:	at #2 Ohio State (1/29/23)
Beat a Top-5 Ranked Team:	at #2 Ohio State (1/29/23)
Beat a Top-5 Ranked Team on the Road:	at #2 Ohio State (1/29/23)

TRANSFERS' PURDUE BESTS

Jeanae Terry's Purdue Highs

Points	17, vs. SIUE, 11/17/22
Rebounds	17, 2x last vs. Illinois, 2/17/22
Assists	12, 2x last vs. Indiana St., 11/22/22
Steals	8, vs. Penn State, 2/22/23
Blocks	2, 3x last at Dayton, 12/1/23
Field Goals	7, at Indiana, 2/6/22
3-Pointers	2, vs. Michigan State, 3/3/22
Free Throws	9, vs. Miami (OH), 12/19/21
Minutes	41, at Michigan State, 12/5/22

Mila Reynolds' Purdue Highs

Points	6, vs. Valparaiso, 12/3/23
Rebounds	5, vs. Valparaiso, 12/3/23
Assists	1, 2x last, vs. Valparaiso, 12/3/23
Steals	
Blocks	1, at Notre Dame, 12/17/23
Field Goals	2, vs. Indiana St., 12/20/23
3-Pointers	1, vs. Indiana St., 12/20/23
Free Throws	4, vs. Valparaiso, 12/3/23
Minutes	16, vs. Valparaiso, 12/3/23

Abbey Ellis' Purdue Highs

Points	29, vs. SIUE, 11/17/22
Rebounds	9, vs. Southern Illinois, 3/16/22
Assists	11, vs. Western Michigan, 11/14/21
Steals	5, vs. Western Michigan, 11/14/21
Blocks	1, 6x last, vs. Indiana St., 12/20/23
Field Goals	9, 3x last vs. Texas A&M, 11/16/23
3-Pointers	6, at Illinois, 1/20/22
Free Throws	9, 2x last
Minutes	44, vs. Indiana, 1/16/22

Alaina Harper's Purdue Highs

Points	4, vs. SEMO, 12/6/23
Rebounds	2, 2x last, vs. SEMO, 12/6/23
Assists	
Steals	
Blocks	1, vs. Indiana St., 12/20/23
Field Goals	2, vs. SEMO, 12/6/23
3-Pointers	
Free Throws	
Minutes	14, vs. Southern Indiana, 11/26/23

Caitlyn Harper's Purdue Highs

Points	22, vs. SEMO, 12/6/23
Rebounds	11, vs. Texas A&M, 11/16/23
Assists	4, at Minnesota, 12/10/23
Steals	3, at Dayton, 12/1/23
Blocks	4, vs. Michigan, 1/10/23
Field Goals	9, 2x last, vs. SEMO, 12/6/23
3-Pointers	2, 7x last, vs. SEMO, 12/6/23
Free Throws	8, vs. Nebraska, 1/18/23
Minutes	37, vs. Texas A&M, 11/16/23

AMIYAH REYNOLDS 1



Height - 6-0 | **Position** - Guard | **Year** - Sophomore | **Major** - Business | **Hometown** - Indianapolis, Ind. | **High School** - Lawrence North
Instagram - s.jaylasmith | **Twitter** - _JaylaSmith | **TikTok** - s.jaylasmith

REYNOLDS QUICK HITS

- No. 43 player in the nation by ESPN HoopGurlz, second highest signee in the Big Ten for the 2023 class
- Finished third as a finalist for the 2023 Indiana Miss Basketball
- Joined 2010 South Bend Washington graduate Skylar Diggins-Smith as the only Panthers to total over 1,000 points and 500 assists in a career
- Named an Indiana All-Star and All-State Supreme 15 as a junior and senior
- Went 95-18 over four years with the Panthers, with a 68-17 record when playing with her sister Mila
- Won 2022 IHSAA 3A State Championship, helping set the championship game record for 3A as the Panthers scored 93 points
- Ended career ranked second in assists at Washington with 564 - Scored 1,000th career point off an assist from Rashunda Jones



RASHUNDA JONES 2



Height - 5-8 | **Position** - Guard | **Year** - Freshman | **Major** - Sports Marketing
Hometown - South Bend, Ind. | **High School** - South Bend Washington
Instagram - rashunda_jones | **TikTok** - itzshundaaaa

	Season High	Career High
Points	22, vs. Valparaiso, 12/3/23	22, vs. Valparaiso, 12/3/23
Rebounds	5, 3x last vs. USI, 11/26/23	5, 3x last vs. USI, 11/26/23
Assists	4, vs. Valparaiso, 12/3/23	4, vs. Valparaiso, 12/3/23
Steals	2, vs. USI, 11/26/23	2, vs. USI, 11/26/23
Blocks	1, 2x last, vs. Texas A&M, 11/16/23	1, 2x last, vs. Texas A&M, 11/16/23
Field Goals	8, vs. Texas A&M, 11/16/23	8, vs. Texas A&M, 11/16/23
3-Pointers	1, vs. Southern, 11/12/23	1, vs. Southern, 11/12/23
Free Throws	8, vs. Valparaiso, 12/3/23	8, vs. Valparaiso, 12/3/23
Minutes	26, vs. USI, 11/26/23	26, vs. USI, 11/26/23

SEASON	GP-GS	MIN/AVG	FG-FGA	FG%	3FG-FGA	3FG%	FT-FTA	FT%	OFF	DEF	TOT	AVG	PF-FO	AST	TO	BLK	STL	PTS	AVG
2023-24	8-0	159/19.9	31-69	.449	5-14	.357	20-26	.769	3	22	25	3.1	21-1	12	20	2	6	87	10.9

JONES QUICK HITS

- Named Big Ten Freshman of the Week after scoring 20 points against Texas A&M
- First Purdue freshman with multiple 20-point games since 2017-18
- 2023 Indiana Miss Basketball runner-up
- No. 79 player in the nation by ESPN HoopGurlz
- 2022 IHSA Class 3A State Champion
- Indiana All-Star & IBCA Supreme 15 as a junior and senior
- Won 2022 IHSA 3A State Championship
- Finished career with 1,791 points, 497 rebounds, 427 assists and 419 steals
- Assisted on Amiyah Reynolds' 1,000th career point

JAYLA SMITH 3



Height - 6-0 | **Position** - Guard | **Year** - Junior | **Major** - Business
Hometown - Indianapolis, Ind. | **High School** - Lawrence North
Instagram - s.jaylasmith | **Twitter** - _JaylaSmith | **TikTok** - s.jaylasmith

	Season High	Career High
Points	13, vs. Florida, 11/20/23	16, 3x last vs. Iowa, 3/3/23
Rebounds	5, vs. Florida, 11/20/23	7, 3x last vs. Nebraska, 1/18/23
Assists	1, 7x last, at Notre Dame, 12/17/23	4, 2x last vs. Nebraska, 1/18/23
Steals	2, vs. Valparaiso, 12/3/23	4, 2x last, vs. SIUE, 11/17/22
Blocks	1, 4x last, at Notre Dame, 12/17/23	3, 2x last vs. Indiana, 2/5/23
Field Goals	6, vs. Florida, 11/20/23	7 vs. Iowa, 3/3/23
3-Pointers	1, vs. Florida, 11/20/23	4, at Nebraska, 1/30/22
Free Throws	4, at Notre Dame, 12/17/23	4, at Notre Dame, 12/17/23
Minutes	23, vs. Florida, 11/20/23	30 at Penn State, 1/7/23

SEASON	GP-GS	MIN/AVG	FG-FGA	FG%	3FG-FGA	3FG%	FT-FTA	FT%	OFF	DEF	TOT	AVG	PF-FO	AST	TO	BLK	STL	PTS	AVG
2021-22	30-1	473/15.8	54-140	.386	16-55	.291	16-26	.615	13	39	52	1.7	25-0	21	29	11	22	140	4.7
2022-23	30-3	569/19.0	95-209	.455	18-64	.281	26-46	.565	24	40	64	2.1	32-0	37	38	17	30	234	7.8
2023-24	10-1	170/17.0	19-60	.317	1-16	.063	6-8	.750	4	15	19	1.9	8-0	7	12	4	3	45	4.5
TOTAL	70-5	1213/17.3	168-409	.411	35-135	.259	48-80	.600	41	94	135	1.9	65-0	65	79	32	55	419	6.0

SMITH QUICK HITS

- Sank game-winning 3-pointer vs. Wisconsin in Big Ten Tournament, helping send Purdue to the NCAA Tournament
- Primary substitute as a freshman with one start
- 2021 Indiana Miss Basketball, 10th in program history
- Won the 2020 Indiana 3A State Championship, over Madison Layden's Northwestern, hitting 8 3-pointers
- No. 49 player in the nation and No. 1 in Indiana by MaxPreps
- 3-time First Team All-State selection
- Set season-long career highs in nearly every statistical category in 2022-23
- Ranked No. 49 player in the nation and the No. 1 player in the state of Indiana by MaxPreps

JEANAE TERRY 10



Height - 5-11 | **Position** - Guard | **Year** - Fifth Year | **Major** - Sociology
Hometown - Detroit, Mich. | **High School** - Wayne Memorial | **Previous** - Illinois
Instagram - saucy__nae | **Twitter** - basquetbol__nae | **TikTok** - saucytiktok10

	Season High	Career High
Points	8, vs. Texas A&M, 11/16/23	28, at Wisconsin, 1/31/21*
Rebounds	15, at Minnesota, 12/10/23	17, 2x last vs. Illinois, 2/17/22
Assists	11, vs. SEMO, 12/6/23	12, 3x last, vs. Indiana St., 11/20/22
Steals	3, 2x last, vs. USI, 11/26/23	8 vs. Penn State, 2/22/23
Blocks	2, at Dayton, 12/1/23	4, vs. Chicago State, 11/5/19*
Field Goals	2, 5x last, vs. Indiana St., 12/20/23	9, vs. Penn State, 1/28/21*
3-Pointers	1, 2x last, at Notre Dame, 12/17/23	3, 3x last vs. Ohio State, 1/7/21*
Free Throws	4, vs. Texas A&M, 11/16/23	11, at Wisconsin, 1/31/21*
Minutes	38, vs. Texas A&M, 11/16/23	41, at Michigan State, 12/4/22

SEASON	GP-GS	MIN/AVG	FG-FGA	FG%	3FG-FGA	3FG%	FT-FTA	FT%	OFF	DEF	TOT	AVG	PF-FO	AST	TO	BLK	STL	PTS	AVG
2019-20	30-11	693/23.1	65-225	.289	15-57	.263	40-66	.606	34	79	113	3.8	55-1	91	50	17	35	185	6.2
2020-21	23-23	690/30.0	89-226	.394	15-58	.259	54-74	.730	48	131	179	7.8	48-1	101	96	6	41	247	10.7
2021-22	32-32	949/29.6	88-215	.409	3-21	.143	51-74	.689	66	157	223	7.0	80-2	183	100	14	41	230	7.2
2022-23	30-30	898/29.9	74-185	.400	1-10	.100	45-71	.634	60	167	227	7.6	62-0	190	93	12	70	194	6.5
2023-24	11-11	313/28.4	11-42	.262	2-2	1.000	21-27	.778	14	64	78	7.1	18-0	64	31	5	14	45	4.1
PURDUE	73-73	2160/29.6	173-442	.391	6-33	.182	117-172	.680	140	388	528	7.2	160-2	437	224	31	125	469	6.4
TOTAL	126-107	3542/28.1	327-893	.366	36-148	.243	211-312	.676	222	598	820	6.5	263-4	629	370	54	201	901	7.2

TERRY QUICK HITS

- Ninth in career assists at Purdue
- Second player from the Big Ten to join the 800-rebound, 600-assist and 200-steal club (Samantha Logic, Iowa)
- 2nd Team All-Big Ten, All-Defensive Team honoree last year
- Joined Caitlin Clark hit 150 ast, 200 reb the last two seasons
- Joined 500-assist club with a pair of dimes vs. Nebraska
- Has only three non-point double-doubles in Purdue history
- Only Boilermaker (men or women) in history to record multiple triple-doubles in a season and a career
- Joined Stephanie White as the only Boilermaker to ever record over 150 assists and 200 rebounds in a season
- Two-time Class A All-State honoree

MCKENNA LAYDEN 11



Height - 6-2 | **Position** - Guard | **Year** - Freshman | **Major** - Pre-dental
Hometown - Kokomo, Ind. | **High School** - Northwestern
Instagram - mckenna.layden | **Twitter** - _mckennalayden | **TikTok** - mckenna.layden

	Season High	Career High
Points	8, vs. USI, 11/26/23	8, vs. USI, 11/26/23
Rebounds	6, vs. USI, 11/26/23	6, vs. USI, 11/26/23
Assists	2, vs. Southern, 11/12/23	2, vs. Southern, 11/12/23
Steals	1, 6x, at Notre Dame, 12/17/23	1, 6x last, at Notre Dame, 12/17/23
Blocks	1, at Dayton, 12/1/23	1, at Dayton, 12/1/23
Field Goals	2, 2x last, at Notre Dame, 12/17/23	2, 2x last, at Notre Dame, 12/17/23
3-Pointers	2, vs. USI, 11/26/23	2, vs. USI, 11/26/23
Free Throws	2, vs. USI, 11/26/23	2, vs. USI, 11/26/23
Minutes	22, vs. USI, 11/26/23	22, vs. USI, 11/26/23

SEASON	GP-GS	MIN/AVG	FG-FGA	FG%	3FG-FGA	3FG%	FT-FTA	FT%	OFF	DEF	TOT	AVG	PF-FO	AST	TO	BLK	STL	PTS	AVG
2023-24	10-0	131/13.1	6-20	.300	5-15	.333	3-4	.750	2	19	21	2.1	5-0	6	2	1	6	20	2.0

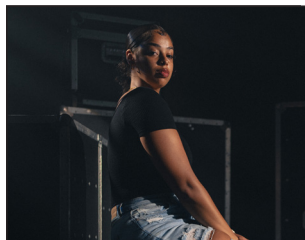
LAYDEN QUICK HITS

- Playing alongside Madison for the first time since her freshman year, when they reached the IHSAA State Championship Game
- Tabbed Elite 150 by Prospects Nation
- Indiana All-Star & IBCA Supreme 15 as a junior and senior
- Two-time sectional champion, won regional and semi-state once, appeared in one state final
- Named an Indiana Junior Core Six All-Star as a junior
- Posted a 78-17 record in high school
- Won two sectional titles in volleyball and two in tennis
- Her mother Kathie was her head coach in high school, won five state titles during coaching career - most by non-private coach



MILA REYNOLDS 15

Height - 6-3 | **Position** - Forward | **Year** - Sophomore | **Major** - African American Studies
Hometown - South Bend, Ind. | **High School** - South Bend Washington | **Previous** - Maryland
Instagram - milareynolds15 | **Twitter** - 15milareynolds | **TikTok** - milamarie_15



	Season High	Career High
Points	6, vs. Valparaiso, 12/3/23	6, vs. Valparaiso, 12/3/23
Rebounds	5, vs. Valparaiso, 12/3/23	5, vs. Valparaiso, 12/3/23
Assists	1, 2x last, vs. Valparaiso, 12/3/23	2, at Northwestern, 29/23*
Steals		1, 2x last vs. Pitt, 11/27/22*
Blocks	1, at Notre Dame, 12/17/23	1, 2x last, at Notre Dame, 12/17/23
Field Goals	2, vs. Indiana St., 12/20/23	2, 3x last, vs. Indiana St., 12/20/23
3-Pointers	1, vs. Indiana St., 12/20/23	1, vs. Indiana St., 12/20/23
Free Throws	4, vs. Valparaiso, 12/3/23	4, vs. Valparaiso, 12/3/23
Minutes	16, vs. Valparaiso, 12/3/23	16, vs. Valparaiso, 12/3/23

REYNOLDS QUICK HITS

- Transferred to Purdue in May of 2023
- Saw action in 22 games with the Terrapins
- No. 60 player, No. 16 forward, four-star, 94 rating by ESPN HoopGurlz- Finished third in voting for the 2022 Indiana Miss Basketball
- Tabbed Indiana All-Star & IBCA Academic All-State as a senior
- Played alongside Amiyah Reynolds and Rashunda Jones for three seasons, going 78-30 over four years and 68-17 with Amiyah
- Totaled 2,099 career points, second in Panther history behind 2010 graduate Skylar Diggins-Smith

SEASON	GP-GS	MIN/AVG	FG-FGA	FG%	3FG-FGA	3FG%	FT-FTA	FT%	OFF	DEF	TOT	AVG	PF-FO	AST	TO	BLK	STL	PTS	AVG
2022-23	22-0	111/5.1	9-29	.310	0-2	.000	5-6	.833	7	12	19	0.9	13-0	4	6	1	2	23	1.0
2023-24	5-0	38/7.7	2-8	.250	0-3	.000	4-6	.667	1	6	7	1.4	7-0	2	5	1	0	8	1.6
TOTAL	27-0	150/5.5	11-37	.297	0-5	.000	9-12	.750	8	18	26	1.0	20-0	6	11	2	2	31	1.1

MARY ASHLEY STEVENSON 20

Height - 6-2 | **Position** - Forward | **Year** - Freshman | **Major** - Communications
Hometown - New York City, N.Y. | **High School** - The Dalton School
Instagram - maryashleystevenson | **Twitter** - _MA_Stevenson20



	Season High	Career High
Points	14, vs. Valparaiso, 12/3/23	14, vs. Valparaiso, 12/3/23
Rebounds	11, at Minnesota, 12/10/23	11, at Minnesota, 12/10/23
Assists	2, 5x last, vs. Indiana St., 12/20/23	2, 5x last, vs. Indiana St., 12/20/23
Steals	1, 6x last, vs. Indiana St., 12/20/23	1, 6x last, vs. Indiana St., 12/20/23
Blocks	2, vs. Valparaiso, 12/3/23	2, vs. Valparaiso, 12/3/23
Field Goals	5, 3x last, vs. Indiana St., 12/20/23	5, 3x last, vs. Indiana St., 12/20/23
3-Pointers	1, at Minnesota, 12/10/23	1, at Minnesota, 12/10/23
Free Throws	6, vs. USI, 11/26/23	6, vs. USI, 11/26/23
Minutes	36, at Minnesota, 12/10/23	36, at Minnesota, 12/10/23

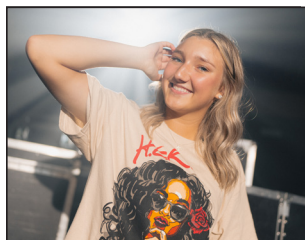
STEVENSON QUICK HITS

- First career double-double vs. Valpo (14 pts, 10 rebs), first points-rebounds freshman double-double at Purdue since 2009-10
- First Purdue freshman to score at least five pts and have an rebounds, assist, steal and block in a season opener since 2009 (8 pts, 2 rebs, 1 asts, 1 stls, 1 blks)
- Runner-up N.Y. Miss Basketball and Gatorade Player of the Year
- No. 97 player in the nation, four-star prospect with a 91 grade from ESPN HoopGurlz
- 3x state champion, two in New York and one in South Carolina
- Back-to-back New York State Sportswriters Association State Player of the Year (Class B&C) in 2021-22 and 2022-23
- Played high school ball under assistant coach Doug Feinberg

SEASON	GP-GS	MIN/AVG	FG-FGA	FG%	3FG-FGA	3FG%	FT-FTA	FT%	OFF	DEF	TOT	AVG	PF-FO	AST	TO	BLK	STL	PTS	AVG
2023-24	11-10	300/27.3	35-90	.389	1-12	.083	27-37	.730	21	40	61	5.5	26-0	10	23	7	5	98	8.9

EMILY MONSON 21

Height - 6-1 | **Position** - Guard | **Year** - Freshman | **Major** - Psychology
Hometown - Murfreesboro, Tenn. | **High School** - Blackman
Instagram - emilymonson_ | **Twitter** - _emily_monson21 | **TikTok** - emilymonson



	Season High	Career High
Points	4, at UCLA, 11/6/23	4, at UCLA, 11/6/23
Rebounds	4, vs. SEMO, 12/6/23	4, vs. SEMO, 12/6/23
Assists	4, vs. Valparaiso, 12/3/23	4, vs. Valparaiso, 12/3/23
Steals	1, at UCLA, 11/6/23	1, at UCLA, 11/6/23
Blocks	1, vs. USI, 11/26/23	1, vs. USI, 11/26/23
Field Goals	1, 2x last, vs. Valparaiso, 12/3/23	1, 2x last, vs. Valparaiso, 12/3/23
3-Pointers	1, 3x last, vs. Indiana St., 12/20/23	1, 3x last, vs. Indiana St., 12/20/23
Free Throws	1, at UCLA, 11/6/23	1, at UCLA, 11/6/23
Minutes	14, vs. USI, 11/26/23	14, vs. USI, 11/26/23

MONSON QUICK HITS

- Naismith High School All-America honorable mention
- No. 15 player in the state by Prep Girls Hoops
- Guided the Blaze to a 2021 Tennessee 3A State Championship
- Won four regional championships and three district titles
- Went 107-16 over high school career, including 81-8 as a starter for three seasons
- Scored 1,066 points with 337 rebounds and 117 steals in career
- Connected on 104 3-pointers at a 41% rate in final campaign
- Scored more points as a senior than her first three seasons combined
- Guided Blackman to the Elite Eight of the TSSAA 4A State Tournament

SEASON	GP-GS	MIN/AVG	FG-FGA	FG%	3FG-FGA	3FG%	FT-FTA	FT%	OFF	DEF	TOT	AVG	PF-FO	AST	TO	BLK	STL	PTS	AVG
2023-24	7-0	41/5.9	2-10	.200	2-6	.333	1-2	.500	2	4	6	0.9	6-0	7	6	1	1	7	1.0

ABBEY ELLIS 23

Height - 5-6 | **Position** - Guard | **Year** - Fifth Year | **Major** - Early Childhood Education
Hometown - Melbourne, Australia | **High School** - Our Lady of Mercy | **Previous** - Cal Poly
Instagram - _abbeyellis | **Twitter** - _abbeyellis | **TikTok** - abbeye_22



	Season High	Career High
Points	21, at Dayton, 12/1/23	39, at San Diego St., 12/21/20*
Rebounds	6, 2x last, vs. USI, 11/26/23	10, vs. Long Beach St., 3/10/21*
Assists	7, vs. USI, 11/26/23	11, vs. Western Michigan, 11/14/21
Steals	4, vs. Indiana St., 12/20/23	8, vs. Santa Clara, 12/15/20*
Blocks	1, vs. Indiana St., 12/20/23	1, 16x last vs. Nebraska, 1/18/23
Field Goals	9, vs. Texas A&M, 11/16/23	14, vs. UC Riverside, 1/23/20*
3-Pointers	2, 2x last, vs. SEMO, 12/6/23	8, at UC San Diego, 1/1/21*
Free Throws	9, vs. Indiana St., 12/20/23	10, at UC San Diego, 1/2/21*
Minutes	39, at Minnesota, 12/10/23	44 vs. Indiana, 1/16/22

ELLIS QUICK HITS

- Saw career-best streak of 27 made free throws come to an end against Southern
- Elected to use fifth year of eligibility for the 2023-24 season
- Two-time All-Big Ten honorable mention
- Shot a career-best 91.7% at the line to finish third in the nation and first in the Big Ten last year, good for third in Purdue history
- Crossed the career 1,000-point plateau in 2021-22
- Mother Libbie sends several ribbons in different colors for her to wear in games
- Father Martin was an Australian Rules Football official who refereed 244 matches in 13 years, including the 2001 Grand Final.
- First Australian in Purdue history

SEASON	GP-GS	MIN/AVG	FG-FGA	FG%	3FG-FGA	3FG%	FT-FTA	FT%	OFF	DEF	TOT	AVG	PF-FO	AST	TO	BLK	STL	PTS	AVG
2019-20	29-29	950/32.8	165-392	.421	48-148	.324	73-87	.839	10	124	134	4.6	75-2	84	94	3	42	451	15.6
2020-21	24-23	753/31.4	127-322	.394	42-116	.362	71-80	.888	17	95	112	4.7	51-2	62	70	3	62	367	15.3
2021-22	32-31	928/29.0	128-275	.465	31-93	.333	82-96	.854	27	74	101	3.2	52-0	95	71	7	35	369	11.5
2022-23	29-18	801/27.6	106-223	.475	35-94	.372	77-84	.917	15	69	84	2.9	50-0	43	49	3	21	324	11.2
2023-24	11-11	326/29.7	52-129	.403	13-49	.265	34-39	.872	8	29	37	3.4	20-0	21	29	0	18	151	13.7
PURDUE	72-60	2055/28.5	286-627	.456	79-236	.335	193-219	.881	50	172	222	3.1	122-0	159	149	10	74	844	11.7
TOTAL	125-112	3759/30.1	578-1341	.431	169-500	.338	337-386	.873	77	391	468	3.7	248-4	305	313	16	178	1662	13.3



SOPHIE SWANSON 31

Height - 5-10 | **Position** - Guard | **Year** - Freshman | **Major** - Elementary Education
Hometown - Barrington, Ill. | **High School** - Barrington Prep
Instagram - sophieswanson31 | **Twitter** - sophieswanson31 | **TikTok** - sophieswanson31



	Season High	Career High
Points	10, vs. Indiana St., 12/20/23	10, vs. Indiana St., 12/20/23
Rebounds	3, 2x last, vs. SEMO, 12/6/23	3, 2x last, vs. SEMO, 12/6/23
Assists	2, vs. Indiana St., 12/20/23	2, vs. Indiana St., 12/20/23
Steals	1, 2x last, vs. SEMO, 12/6/23	1, 2x last, vs. SEMO, 12/6/23
Blocks		
Field Goals	4, vs. Indiana St., 12/20/23	4, vs. Indiana St., 12/20/23
3-Pointers	2, 2x last, vs. Indiana St., 12/20/23	2, 2x last, vs. Indiana St., 12/20/23
Free Throws		
Minutes	15, vs. Indiana St., 12/20/23	15, vs. Indiana St., 12/20/23

SWANSON QUICK HITS

- Made career debut against Valparaiso
- Coming off knee injury that ended senior campaign
- 2022 Illinois Miss Basketball and Illinois 4A Player of the Year
- Invited to the U18 USA Team Trials
- Four-time all-state, all-conference and all-area honoree
- Honored as the Barrington Female Athlete of the Year in 2021-22
- Won conference, regional, sectional, super-sectional titles as a junior, reaching the state finals
- Invited to U18 Team USA camp as a junior
- Set the school record for points in a season (750), 3-pointers (86), thrice set the school mark for points in a game (40, 37, 36)

SEASON	GP-GS	MIN/AVG	FG-FGA	FG%	3FG-FGA	3FG%	FT-FTA	FT%	OFF	DEF	TOT	AVG	PF-FO	AST	TO	BLK	STL	PTS	AVG
2023-24	4-0	35/8.8	8-22	.364	4-14	.286	0-0	.000	2	8	10	2.5	2-0	1	3	0	2	20	5.0

ALAINA HARPER 32

Height - 6-3 | **Position** - Guard | **Year** - Sophomore | **Major** - Biomedical Health
Hometown - Hartland, Wis. | **High School** - Arrowhead | **Previous** - Grand Canyon
Instagram - alaina_harper32 | **Twitter** - alainaharper32



	Season High	Career High
Points	4, vs. SEMO, 12/6/23	18, vs. Lindenwood, 11/26/22*
Rebounds	2, 2x last, vs. SEMO, 12/6/23	8, vs. Columbia, 12/11/22*
Assists		1, 5x last at Southern Utah, 3/2/23*
Steals		2, vs. Seattle, 2/18/23*
Blocks	1, vs. Indiana St., 12/20/23	1, 4x last, vs. Indiana St., 12/20/23
Field Goals	1, 2x last, vs. Indiana St., 12/20/23	8, vs. Linedwood, 11/26/22*
3-Pointers		1, 3x last at Southern Utah, 3/2/23*
Free Throws		5, at Southern Utah, 3/2/23*
Minutes	14, vs. USI, 11/26/23	35, vs. Southern Utah, 3/10/23*

HARPER QUICK HITS

- Teammates with her sister Caitlyn for the first time
- Transferred to Purdue in May of 2023
- Appeared in 29 games with a pair of starts at Grand Canyon
- Was named WAC Freshman of the Week early in the season
- No. 6 player in Wisconsin by Prep Girls Hoops
- Garnered back-to-back WBCA Division I First Team All-State honors as a junior and senior
- Tabbed the 2022 Wisconsin Sports Network's top post player
- 2021 USA Today High School Sports Awards (Milwaukee) nominee

SEASON	GP-GS	MIN/AVG	FG-FGA	FG%	3FG-FGA	3FG%	FT-FTA	FT%	OFF	DEF	TOT	AVG	PF-FO	AST	TO	BLK	STL	PTS	AVG
2022-23	29-2	334/11.5	58-102	.569	3-5	.600	26-40	.650	35	29	64	2.2	35-0	5	21	3	3	145	5.0
2023-24	10-0	61/6.1	3-3	1.000	0-0	.000	0-0	.000	3	5	8	0.8	4-0	0	4	0	0	6	0.6
TOTAL	39-2	396/10.1	61-105	.581	3-5	.600	26-40	.650	38	34	72	1.8	39-0	5	25	3	3	151	3.9

MADISON LAYDEN 33

Height - 6-1 | **Position** - Guard | **Year** - Senior | **Major** - Selling & Sales Management
Hometown - Kokomo, Ind. | **High School** - Northwestern
Instagram - madison_layden | **Twitter** - madison_layden | **TikTok** - madison_layden



	Season High	Career High
Points	21, vs. Southern, 11/12/23	21, vs. Southern, 11/12/23
Rebounds	5, 3x last, vs. Indiana St., 12/20/23	8 4x last, at Michigan State, 12/4/22
Assists	3, vs. Indiana St., 12/20/23	7, vs. Michigan State - 1/3/21
Steals	3, 2x last, vs. Valparaiso, 12/3/23	6, at Rutgers, 2/20/22
Blocks	1, 7x last, vs. Indiana St., 12/20/23	2 6x last vs. Northwestern, 2/12/23
Field Goals	7, at Minnesota, 12/10/23	8, 2x last vs. Penn State, 2/9/22
3-Pointers	4, 6x last, at Minnesota, 12/10/23	6, at Iowa - 1/18/21
Free Throws	7, vs. Southern, 11/12/23	6, vs. Dayton, 11/20/21
Minutes	36, 2x last, at Minnesota, 12/10/23	44 vs. Indiana, 1/16/22

LAYDEN QUICK HITS

- Playing alongside her sister freshman McKenna
- 11th on Purdue's career 3-point list
- Got engaged over the holiday break to Rees Zay, a Purdue graduate and former practice player for the program
- Big Ten All-Freshman (2021), honorable mention (2022)
- One of 12 players to have 30 3-pointers, 30 steals and 65 assists each of the last three seasons
- Invited to the USA Basketball U19 World Cup Trials
- Named to the All-Freshman Team in 2020-21
- Tied freshman record with 7 3pts in a game at Iowa
- First in IHSA history to lead three Final Fours in scoring
- Ranked 13th in IHSA in career scoring and one of 46 2,000-point scorers in state history

SEASON	GP-GS	MIN/AVG	FG-FGA	FG%	3FG-FGA	3FG%	FT-FTA	FT%	OFF	DEF	TOT	AVG	PF-FO	AST	TO	BLK	STL	PTS	AVG
2020-21	23-21	729/31.7	70-163	.429	45-111	.405	15-20	.750	12	61	73	3.2	43-0	69	44	5	48	200	8.7
2021-22	29-28	986/34.0	117-337	.347	63-190	.332	40-47	.851	24	110	134	4.6	71-1	80	55	15	49	337	11.6
2022-23	28-13	816/29.2	56-165	.339	34-124	.274	34-38	.895	2	115	117	4.2	72-1	83	53	10	30	180	6.4
2023-24	11-11	318/28.9	38-81	.469	26-55	.473	15-19	.789	3	28	31	2.8	21-0	12	22	6	15	117	10.6
TOTAL	91-73	2849/31.3	281-746	.377	168-480	.350	104-124	.839	41	314	355	3.9	207-2	244	174	36	142	834	9.2

CAITLYN HARPER 34

Height - 6-3 | **Position** - Forward | **Year** - Sixth Year | **Major** - Master's Management
Hometown - Hartland, Wisc. | **High School** - Arrowhead | **Previous** - Cal Baptist
Instagram - caitlynharper32 | **Twitter** - C_harp32 | **TikTok** - caitlynharper32



	Season High	Career High	(*prior school)
Points	22, vs. SEMO, 12/6/23	30, at Utah Valley, 1/15/22*	
Rebounds	11, vs. Texas A&M, 11/16/23	14, 3x last, vs. Chicago State*	
Assists	4, at Minnesota, 12/10/23	5, at UTRGV, 2/13/21*	
Steals	3, at Dayton, 12/1/23	5, at Sam Houston State, 1/27/22*	
Blocks	2, at Minnesota, 12/10/23	8, at Chicago State, 3/2/22*	
Field Goals	9, vs. SEMO, 12/6/23	12, vs. Utah Valley, 2/26/22	
3-Pointers	2, 3x last, vs. SEMO, 12/6/23	4, vs. Rice, 3/22/21*	
Free Throws	3, vs. SEMO, 12/6/23	10, vs. Sam Houston State, 3/10/22*	
Minutes	37, vs. Texas A&M, 11/16/23	41, at Chicago State, 3/2/22*	

HARPER QUICK HITS

- Playing with her sister Alaina this season for the first time
- Tallied 1,500th career point against Illinois last year
- Finished third on the team in scoring last season
- One of 11 players from the Big Ten to average double figures and shoot better than 50% in 2022-23
- Transferred to Purdue after spending four seasons at Cal Baptist
- 2022 WAC Player of the Year and CoSIDA All-American
- Played parts of four seasons at Cal Baptist, starting in 2018-19
- Named the 2022 CoSIDA Academic All-America, 2021-22 WAC Player of the Year, 2021 WAC Tournament MVP

SEASON	GP-GS	MIN/AVG	FG-FGA	FG%	3FG-FGA	3FG%	FT-FTA	FT%	OFF	DEF	TOT	AVG	PF-FO	AST	TO	BLK	STL	PTS	AVG
2018-19	29-3	470/16.2	100-203	.493	11-52	.212	40-58	.690	36	84	120	4.1	49-0	23	38	21	11	251	8.7
2019-20	5-5	121/24.3	32-56	.571	1-2	.500	16-18	.889	13	32	45	9.0	17-0	7	10	10	2	81	16.2
2020-21	27-10	642/23.8	149-281	.530	27-70	.386	60-76	.789	62	140	202	7.5	67-0	35	50	34	31	385	14.3
2021-22	32-32	964/30.1	223-421	.530	29-95	.305	94-127	.740	36	153	189	5.9	68-0	40	58	51	41	569	17.8
2022-23	30-29	713/23.8	127-232	.547	17-52	.327	41-53	.774	38	78	116	3.9	65-1	18	49	18	18	312	10.4
2023-24	11-11	307/27.9	47-85	.553	9-26	.346	12-14	.857	9	38	47	4.3	18-0	12	15	6	12	115	10.5
PURDUE	41-40	1021/24.9	174-317	.549	26-78	.333	53-67	.791	47	116	163	4.0	83-1	30	64	24	30	427	10.4
TOTAL	134-90	3217/24.0	678-1278	.531	94-297	.316	263-346	.760	194	525	719	5.4	284-1	135	220	140	115	1713	12.8



2023-24 PURDUE WOMEN'S BASKETBALL GAME NOTES

2 | Rashunda Jones

2023-24	Min.	FG	3FG	FT	O-D-T	PF	Pts	A	To	S	B	+/-
UCLA*	20	2-7	0-2	0-0	0-1-1	3	4	0	1	0	0	-33
Southern	15	1-8	1-3	1-2	0-2-2	3	4	1	4	0	1	4
Texas A&M	23	8-11	0-1	4-6	0-2-2	3	20	0	1	0	1	11
Florida	18	1-6	0-0	2-2	1-4-5	5	4	1	3	1	0	9
Georgia	21	4-8	0-0	2-2	1-4-5	2	10	0	3	1	0	-10
USI	26	6-11	2-4	2-4	1-4-5	2	16	3	3	2	0	22
Dayton	19	3-9	0-1	1-2	0-1-1	2	7	3	3	1	0	5
Valpo	19	6-9	2-3	8-8	0-4-4	1	22	4	2	1	0	29
SEMO	DNP											
Minnesota	DNP											
Notre Dame	DNP											
Indiana State	DNP											
Wisconsin												
Rutgers												
Maryland												
Iowa												
Penn State												
Indiana												
MSU												
Ohio State												
Nebraska												
Illinois												
Indiana												
NU												
Nebraska												
MSU												
Wisconsin												
Penn State												
Michigan												

* Started
^Big Ten Tournament

10 | Jeanae Terry

2023-24	Min.	FG	3FG	FT	O-D-T	PF	Pts	A	To	S	B	+/-
UCLA*	30	1-5	0-0	3-4	1-6-7	2	5	4	2	1	0	-23
Southern*	35	1-6	0-0	3-4	1-10-11	0	5	7	2	0	0	15
Texas A&M*	38	2-6	0-0	4-4	1-4-5	2	8	10	3	3	0	9
Florida*	25	0-2	0-0	0-0	2-2-4	0	0	2	0	1	0	-10
Georgia*	26	2-4	0-0	0-1	0-1-1	2	4	4	4	0	0	-9
USI*	18	2-3	0-0	2-2	2-4-6	2	6	8	1	3	1	31
Dayton*	30	0-3	0-0	1-2	1-7-8	0	1	4	3	0	2	5
Valpo*	20	0-1	0-0	3-4	1-6-7	2	3	4	3	2	0	3
SEMO*	28	0-1	0-0	1-2	3-7-10	3	1	11	1	1	1	28
Minnesota*	35	2-6	1-1	2-2	1-14-15	4	7	9	7	2	1	8
Notre Dame*	30	1-5	1-1	2-2	1-3-4	1	5	1	5	1	0	-35
Indiana State*	17	2-3	0-0	0-0	3-2-5	3	4	5	1	0	0	17
Wisconsin												
Rutgers												
Maryland												
Iowa												
Penn State												
Indiana												
MSU												
Ohio State												
Nebraska												
Illinois												
Indiana												
NU												
Nebraska												
MSU												
Wisconsin												
Penn State												
Michigan												

* Started
^Big Ten Tournament

3 | Jayla Smith

2023-24	Min.	FG	3FG	FT	O-D-T	PF	Pts	A	To	S	B	+/-
UCLA	17	2-7	0-3	0-0	1-2-3	1	4	0	3	0	0	-23
Southern	DNP											
Texas A&M	20	0-4	0-2	0-0	0-1-1	0	0	1	0	0	1	22
Florida	24	6-10	1-4	0-0	0-5-5	1	13	1	3	0	0	-6
Georgia	17	0-4	0-2	0-0	0-2-2	0	0	0	0	0	0	1
USI	16	4-7	0-2	0-2	0-0-0	3	8	1	2	0	1	17
Dayton	11	2-6	0-0	0-0	3-1-4	0	4	0	2	0	1	4
Valpo	16	3-4	0-1	0-0	0-3-3	2	6	1	2	2	0	19
SEMO	20	2-7	0-1	2-2	0-0-0	1	6	1	0	0	0	-1
Minnesota	14	0-5	0-0	0-0	0-1-1	0	0	1	0	0	0	-11
Notre Dame	16	0-6	0-1	4-4	0-0-0	0	4	1	0	1	1	-11
Indiana State	13	0-4	0-0	2-4	2-0-2	1	2	1	1	0	1	-13
Wisconsin												
Rutgers												
Maryland												
Iowa												
Penn State												
Indiana												
MSU												
Ohio State												
Nebraska												
Illinois												
Indiana												
NU												
Nebraska												
MSU												
Wisconsin												
Penn State												
Michigan												

* Started
^Big Ten Tournament

11 | McKenna Layden

2023-24	Min.	FG	3FG	FT	O-D-T	PF	Pts	A	To	S	B	+/-
UCLA	15	1-4	1-2	1-2	1-0-1	0	4	0	0	1	0	-25
Southern	19	0-3	0-3	0-0	0-4-4	0	0	2	1	1	0	-5
Texas A&M	10	0-0	0-0	0-0	0-0-0	0	0	0	0	0	0	9
Florida	11	0-0	0-0	0-0	0-1-1	0	0	0	0	0	0	-3
Georgia	4	0-2	0-2	0-0	0-1-1	0	0	0	0	1	0	-2
USI	22	2-4	2-3	2-2	0-6-6	1	8	1	0	1	0	14
Dayton	10	0-1	0-1	0-0	0-3-3	0	0	1	0	0	1	-2
Valpo	18	0-1	0-1	0-0	0-3-3	1	0	1	1	0	0	13
SEMO	14	1-2	1-2	0-0	1-1-2	1	3	0	0	1	0	6
Minnesota	DNP											
Notre Dame	12	2-3	1-1	0-0	0-0-0	2	5	1	0	1	0	-6
Indiana State	7	0-0	0-0	0-0	0-1-1	0	0	0	0	0	0	-8
Wisconsin												
Rutgers												
Maryland												
Iowa												
Penn State												
Indiana												
MSU												
Ohio State												
Nebraska												
Illinois												
Indiana												
NU												
Nebraska												
MSU												
Wisconsin												
Penn State												
Michigan												

* Started
^Big Ten Tournament



2023-24 PURDUE WOMEN'S BASKETBALL GAME NOTES

15 | Mila Reynolds

2023-24	Min.	FG	3FG	FT	O-D-T	PF	Pts	A	To	S	B	+/-
UCLA	5	0-2	0-1	0-0	0-0-0	1	0	1	1	0	0	-14
Southern	4	0-0	0-0	0-0	0-0-0	1	0	0	0	0	0	-4
Texas A&M	DNP											
Florida	DNP											
Georgia	DNP											
USI	DNP											
Dayton	DNP											
Valpo	16	1-2	0-0	4-6	1-4-5	2	6	1	2	2	0	19
SEMO	DNP											
Minnesota	2	0-2	0-1	0-0	0-0-0	0	0	0	0	0	0	-3
Notre Dame	12	1-2	0-1	0-0	0-2-2	3	2	0	3	0	1	-3
Indiana State	15	2-5	1-2	0-0	0-2-2	2	5	0	1	0	0	8
Wisconsin												
Rutgers												
Maryland												
Iowa												
Penn State												
Indiana												
MSU												
Ohio State												
Nebraska												
Illinois												
Indiana												
NU												
Nebraska												
MSU												
Wisconsin												
Penn State												
Michigan												

* Started
^Big Ten Tournament

21 | Emily Monson

2023-24	Min.	FG	3FG	FT	O-D-T	PF	Pts	A	To	S	B	+/-
UCLA	4	1-1	1-1	1-2	0-0-0	0	4	0	2	1	0	-2
Southern	3	0-0	0-0	0-0	1-0-1	0	0	0	1	0	0	-1
Texas A&M	DNP											
Florida	3	0-1	0-1	0-0	0-0-0	0	0	0	0	0	0	4
Georgia	DNP											
USI	14	0-3	0-0	0-0	0-1-1	1	0	1	0	0	1	-6
Dayton	DNP											
Valpo	8	1-4	1-4	0-0	0-0-0	2	3	4	1	0	0	-1
SEMO	8	0-0	0-0	0-0	1-3-4	2	0	2	2	0	0	-6
Minnesota	DNP											
Notre Dame	4	0-1	0-0	0-0	0-0-0	1	0	0	0	0	0	2
Indiana State	8	1-3	1-2	0-0	0-1-1	3	3	1	0	0	0	-6
Wisconsin												
Rutgers												
Maryland												
Iowa												
Penn State												
Indiana												
MSU												
Ohio State												
Nebraska												
Illinois												
Indiana												
NU												
Nebraska												
MSU												
Wisconsin												
Penn State												
Michigan												

* Started
^Big Ten Tournament

20 | Mary Ashley Stevenson

2023-24	Min.	FG	3FG	FT	O-D-T	PF	Pts	A	To	S	B	+/-
UCLA	27	3-5	0-1	2-2	2-0-2	3	8	2	3	1	1	-25
Southern*	28	5-9	0-1	3-3	1-4-5	2	13	0	4	0	1	22
Texas A&M*	9	1-3	0-0	0-0	2-1-3	3	2	0	0	0	0	-1
Florida*	26	2-8	0-2	2-4	4-2-6	3	6	0	0	0	1	2
Georgia*	32	4-11	0-1	3-3	2-1-3	1	11	2	3	1	0	-12
USI*	26	3-5	0-0	6-7	0-1-1	3	12	1	1	1	0	26
Dayton*	32	3-8	0-1	2-3	2-5-7	1	8	2	3	1	0	11
Valpo*	27	5-8	0-0	4-6	2-8-10	3	14	1	3	0	2	20
SEMO*	29	4-11	0-0	3-5	2-5-7	1	11	2	2	0	1	28
Minnesota*	36	3-12	1-5	1-2	2-9-11	3	8	0	2	0	1	1
Notre Dame*	32	2-10	0-1	1-2	2-4-6	3	5	0	2	1	0	-28
Indiana State	31	5-9	0-1	1-3	2-6-8	1	11	2	2	1	0	15
Wisconsin												
Rutgers												
Maryland												
Iowa												
Penn State												
Indiana												
MSU												
Ohio State												
Nebraska												
Illinois												
Indiana												
NU												
Nebraska												
MSU												
Wisconsin												
Penn State												
Michigan												

* Started
^Big Ten Tournament

23 | Abbey Ellis

2023-24	Min.	FG	3FG	FT	O-D-T	PF	Pts	A	To	S	B	+/-
UCLA*	22	4-8	0-3	2-2	0-2-2	0	10	0	4	1	0	-9
Southern*	28	3-11	1-6	7-9	0-4-4	3	14	4	3	3	0	14
Texas A&M*	34	9-18	2-4	0-0	0-0-0	2	20	2	1	1	0	8
Florida*	36	3-13	1-9	7-7	0-5-5	4	14	1	4	3	0	-4
Georgia*	30	4-12	1-4	2-2	3-3-6	1	11	1	4	0	0	-2
USI*	21	7-11	1-3	4-4	1-5-6	2	19	7	1	1	0	38
Dayton*	34	5-13	3-6	8-10	1-1-2	2	21	0	1	1	0	10
Valpo*	26	5-11	1-4	0-0	1-3-4	2	11	2	3	1	0	11
SEMO*	27	4-9	2-5	3-3	2-1-3	2	13	1	2	2	0	22
Minnesota*	39	4-9	1-2	1-2	0-3-3	0	10	1	2	3	0	-3
Notre Dame*	31	4-14	0-3	0-0	0-2-2	2	8	2	4	2	0	-35
Indiana State*	33	9-13	3-4	9-11	1-2-3	2	28	3	5	4	1	24
Wisconsin												
Rutgers												
Maryland												
Iowa												
Penn State												
Indiana												
MSU												
Ohio State												
Nebraska												
Illinois												
Indiana												
NU												
Nebraska												
MSU												
Wisconsin												
Penn State												
Michigan												

* Started
^Big Ten Tournament



2023-24 PURDUE WOMEN'S BASKETBALL GAME NOTES

31 | Sophie Swanson

2023-24	Min.	FG	3FG	FT	O-D-T	PF	Pts	A	To	S	B	+/-
UCLA	DNP											
Southern	DNP											
Texas A&M	DNP											
Florida	DNP											
Georgia	DNP											
USI	8	1-3	0-2	0-0	0-2-2	0	2	0	1	0	0	-8
Dayton	DNP											
Valpo	9	3-6	2-4	0-0	1-2-3	1	8	0	1	1	0	3
SEMO	7	3-8	1-5	0-0	1-2-3	1	7	0	0	1	0	-1
Minnesota	DNP											
Notre Dame	12	1-5	1-3	0-0	0-2-2	0	3	1	1	0	0	-1
Indiana State	15	4-6	2-3	0-0	1-1-2	2	10	2	3	0	0	9
Wisconsin												
Rutgers												
Maryland												
Iowa												
Penn State												
Indiana												
MSU												
Ohio State												
Nebraska												
Illinois												
Indiana												
NU												
Nebraska												
MSU												
Wisconsin												
Penn State												
Michigan												

* Started
^Big Ten Tournament

32 | Alaina Harper

2023-24	Min.	FG	3FG	FT	O-D-T	PF	Pts	A	To	S	B	+/-
UCLA	3	0-0	0-0	0-0	0-0-0	1	0	0	0	0	0	-3
Southern	2	0-0	0-0	0-0	0-0-0	0	0	0	0	0	0	2
Texas A&M	3	0-0	0-0	0-0	0-1-1	1	0	0	1	0	0	1
Florida	2	0-0	0-0	0-0-0	0	0	0	0	0	0	0	0
Georgia	11	0-0	0-0	0-0	0-1-1	0	0	0	1	0	0	-5
USI	14	1-1	0-0	0-0	2-0-2	0	2	0	0	0	0	4
Dayton	6	0-0	0-0	0-0	0-1-1	1	0	0	1	0	0	-10
Valpo	DNP											
SEMO	10	2-2	0-0	0-0	1-1-2	0	4	0	0	0	0	-4
Minnesota	6	0-0	0-0	0-0	0-0-0	1	0	0	1	0	0	-3
Notre Dame	5	0-0	0-0	0-0	0-1-1	0	0	0	0	0	0	-7
Indiana State	10	1-2	0-0	0-0	0-1-1	3	2	0	2	0	1	-6
Wisconsin												
Rutgers												
Maryland												
Iowa												
Penn State												
Indiana												
MSU												
Ohio State												
Nebraska												
Illinois												
Indiana												
NU												
Nebraska												
MSU												
Wisconsin												
Penn State												
Michigan												

* Started
^Big Ten Tournament

33 | Madison Layden

2023-24	Min.	FG	3FG	FT	O-D-T	PF	Pts	A	To	S	B	+/-
UCLA*	28	0-3	0-2	0-0	0-1-1	0	0	1	1	0	0	-33
Southern*	36	5-6	4-5	7-8	1-3-4	4	21	2	1	3	0	17
Texas A&M*	27	2-8	1-5	3-4	1-4-5	3	8	0	2	2	1	-2
Florida*	23	0-5	0-3	0-0	0-2-2	1	0	0	2	0	0	-7
Georgia*	32	5-12	4-8	0-0	0-2-2	4	14	1	2	1	0	2
USI*	19	6-6	4-4	0-0	0-2-2	2	16	0	1	0	1	21
Dayton*	32	3-5	3-5	4-4	0-5-5	1	13	2	3	2	1	4
Valpo*	32	4-10	2-7	0-0	0-4-4	0	10	2	0	3	1	22
SEMO*	30	6-12	4-8	0-1	0-2-2	2	16	1	0	2	1	24
Minnesota*	37	6-8	4-6	1-2	0-1-1	2	17	1	6	1	0	-3
Notre Dame*	23	1-6	0-2	0-0	1-2-3	2	2	2	4	1	1	-26
Indiana State*	34	3-8	3-7	2-2	2-3-5	1	11	3	0	2	1	20
Wisconsin												
Rutgers												
Maryland												
Iowa												
Penn State												
Indiana												
MSU												
Ohio State												
Nebraska												
Illinois												
Indiana												
NU												
Nebraska												
MSU												
Wisconsin												
Penn State												
Michigan												

* Started
^Big Ten Tournament

34 | Caitlyn Harper

2023-24	Min.	FG	3FG	FT	O-D-T	PF	Pts	A	To	S	B	+/-
UCLA*	31	3-8	2-6	2-2	0-2-2	2	10	0	1	1	1	-25
Southern*	32	5-8	0-2	0-0	1-6-7	3	10	3	4	0	0	21
Texas A&M*	37	5-8	2-3	2-2	3-8-11	0	14	1	1	1	0	13
Florida*	36	6-12	0-3	0-0	0-5-5	1	12	0	1	1	0	0
Georgia*	31	2-4	1-2	2-2	2-2-4	3	7	0	0	2	1	-3
USI*	18	2-5	0-1	2-2	2-2-4	0	6	2	0	1	0	31
Dayton*	27	6-10	1-1	0-0	0-4-4	4	13	1	0	3	1	13
Valpo*	12	0-1	0-0	0-0	0-0-0	0	0	0	4	0	0	-4
SEMO*	29	9-13	2-4	2-4	1-4-5	0	22	1	2	1	1	28
Minnesota*	32	7-11	0-2	2-2	0-3-3	4	16	4	1	1	2	4
Notre Dame*	26	2-5	1-2	0-0	0-2-2	1	5	0	1	1	0	-35
Indiana State*	19	1-4	1-3	0-0	1-2-3	3	3	3	1	1	1	20
Wisconsin												
Rutgers												
Maryland												
Iowa												
Penn State												
Indiana												
MSU												
Ohio State												
Nebraska												
Illinois												
Indiana												
NU												
Nebraska												
MSU												
Wisconsin												
Penn State												
Michigan												

* Started
^Big Ten Tournament





2023-24 Purdue Women's Basketball Combined Team Statistics All games

Page 1/1
as of Dec 22, 2023

Game Records

Record	Overall	Home	Away	Neutral
ALL GAMES	7-5	6-0	1-3	0-2
CONFERENCE	0-1	0-0	0-1	0-0
NON-CONFERENCE	7-4	6-0	1-2	0-2

Score by Periods

Team	1st	2nd	3rd	4th	OT	TOT
Purdue	201	183	227	187	0	798
Opponents	178	170	187	210	0	745

Team Box Score

No.	Player	Total			3-Point		F-Throw		Rebounds				Other Stats									
		GP-GS	MIN	AVG	FG-FGA	FG%	3FG-3FGA	3FG%	FT-FTA	FT%	OFF	DEF	TOT	AVG	PF	DQ	A	TO	BLK	STL	PTS	AVG
23	ELLIS, Abbey	12-12	358:58	29.9	60-142	.423	16-53	.302	43-50	.860	9	31	40	3.3	22	0	24	34	1	22	179	14.9
2	JONES, Rashunda	8-0	158:50	19.9	31-69	.449	5-14	.357	20-26	.769	3	22	25	3.1	21	1	12	20	2	6	87	10.9
33	LAYDEN, Madison	12-12	351:59	29.3	41-89	.461	29-62	.468	17-21	.810	5	31	36	3.0	22	0	15	22	7	17	128	10.7
34	HARPER, Caitlyn	12-12	325:46	27.1	48-89	.539	10-29	.345	12-14	.857	10	40	50	4.2	21	0	15	16	7	13	118	9.8
20	STEVENSON, Mary Ashley	12-11	331:00	27.6	40-99	.404	1-13	.077	28-40	.700	23	46	69	5.8	27	0	12	25	7	6	109	9.1
31	SWANSON, Sophie	5-0	49:35	9.9	12-28	.429	6-17	.353	0-0	.000	3	9	12	2.4	4	0	3	6	0	2	30	6.0
3	SMITH, Jayla	11-1	183:22	16.7	19-64	.297	1-16	.063	8-12	.667	6	15	21	1.9	9	0	8	13	5	3	47	4.3
10	TERRY, Jeanae	12-12	329:39	27.5	13-45	.289	2-2	1.000	21-27	.778	17	66	83	6.9	21	0	69	32	5	14	49	4.1
15	REYNOLDS, Mila	6-0	53:25	8.9	4-13	.308	1-5	.200	4-6	.667	1	8	9	1.5	9	0	2	6	1	0	13	2.2
11	LAYDEN, McKenna	11-0	137:38	12.5	6-20	.300	5-15	.333	3-4	.750	2	20	22	2.0	5	0	6	2	1	6	20	1.8
21	MONSON, Emily	8-0	49:02	6.1	3-13	.231	3-8	.375	1-2	.500	2	5	7	0.9	9	0	8	6	1	1	10	1.3
32	HARPER, Alaina	11-0	70:45	6.4	4-5	.800	0-0	.000	0-0	.000	3	6	9	0.8	7	0	0	6	1	0	8	0.7
Team											33	25	58					9				
Total		12	2400		281-676	.416	79-234	.338	157-202	.777	117	324	441	36.8	177	1	174	197	38	90	798	66.5
Opponents		12	2400		279-730	.382	61-200	.305	126-171	.737	143	292	435	36.3	210	2	139	191	39	100	745	62.1

Team Statistics

	PURDUE	OPP
Scoring	798	745
Points per game	66.5	62.1
Scoring margin	+4.4	-
Field goals-att	281-676	279-730
Field goal pct	.416	.382
3 point fg-att	79-234	61-200
3-point FG pct	.338	.305
3-pt FG made per game	6.6	5.1
Free throws-att	157-202	126-171
Free throw pct	.777	.737
F-Throws made per game	13.1	10.5
Rebounds	441	435
Rebounds per game	36.8	36.3
Rebounding margin	+0.5	-
Assists	174	139
Assists per game	14.5	11.6
Turnovers	197	191
Turnovers per game	16.4	15.9
Turnover margin	-0.5	-
Assist/turnover ratio	0.9	0.7
Steals	90	100
Steals per game	7.5	8.3
Blocks	38	39
Blocks per game	3.2	3.3
Winning streak	1	-
Home win streak	6	-
Attendance	29802	23016
Home games-Avg/Game	6-4967	4-5754
Neutral site-Avg/Game	-	2-358

Team Results

Date	Opponent	Score	Att.
11/06/2023	at UCLA	L 49-92	6783
11/12/2023	Southern U.	W 67-50	5002
11/16/2023	Texas A&M	W 72-58	5223
11/20/2023	vs Florida	L 49-52	437
11/22/2023	vs Georgia	L 57-65	278
11/26/2023	Southern Ind.	W 95-57	3683
12/01/2023	at Dayton	W 67-59	3250
12/03/2023	Valparaiso	W 83-56	5305
12/06/2023	Southeast Mo. St.	W 83-57	3412
12/10/2023	at Minnesota	L 58-60	3834
12/17/2023	at Notre Dame	L 39-76	9149
12/20/2023	Indiana St.	W 79-63	7177



2023-24 Purdue Women's Basketball Combined Team Statistics In Conference games

Page 1/1
as of Dec 22, 2023

Game Records

Record	Overall	Home	Away	Neutral
ALL GAMES	0-1	0-0	0-1	0-0
CONFERENCE	0-1	0-0	0-1	0-0
NON-CONFERENCE	0-0	0-0	0-0	0-0

Score by Periods

Team	1st	2nd	3rd	4th	OT	TOT
Purdue	7	11	25	15	0	58
Opponents	7	18	13	22	0	60

Team Box Score

No.	Player				Total		3-Point		F-Throw		Rebounds											
		GP-GS	MIN	AVG	FG-FGA	FG%	3FG-3FGA	3FG%	FT-FTA	FT%	OFF	DEF	TOT	AVG	PF	DQ	A	TO	BLK	STL	PTS	AVG
33	LAYDEN, Madison	1-1	36:26	36.4	6-8	.750	4-6	.667	1-2	.500	0	1	1	1.0	2	0	1	6	0	1	17	17.0
34	HARPER, Caitlyn	1-1	32:10	32.2	7-11	.636	0-2	.000	2-2	1.000	0	3	3	3.0	4	0	4	1	2	1	16	16.0
23	ELLIS, Abbey	1-1	38:54	38.9	4-9	.444	1-2	.500	1-2	.500	0	3	3	3.0	0	0	1	2	0	3	10	10.0
20	STEVENSON, Mary Ashley	1-1	35:44	35.7	3-12	.250	1-5	.200	1-2	.500	2	9	11	11.0	3	0	0	2	1	0	8	8.0
10	TERRY, Jeanae	1-1	35:03	35.1	2-6	.333	1-1	1.000	2-2	1.000	1	14	15	15.0	4	0	9	7	1	2	7	7.0
3	SMITH, Jayla	1-0	13:53	13.9	0-5	.000	0-0	.000	0-0	.000	0	1	1	1.0	0	0	1	0	0	0	0	0.0
32	HARPER, Alaina	1-0	05:59	6.0	0-0	.000	0-0	.000	0-0	.000	0	0	0	0.0	1	0	0	1	0	0	0	0.0
15	REYNOLDS, Mila	1-0	01:51	1.9	0-2	.000	0-1	.000	0-0	.000	0	0	0	0.0	0	0	0	0	0	0	0	0.0
Team											7		7									
Total		1	200		22-53	.415	7-17	.412	7-10	.700	10	31	41	41.0	14	0	16	19	4	7	58	58.0
Opponents		1	200		24-67	.358	5-19	.263	7-12	.583	14	24	38	38.0	15	0	13	8	2	6	60	60.0

Team Statistics

	PURDUE	OPP
Scoring	58	60
Points per game	58.0	60.0
Scoring margin	-2.0	-
Field goals-att	22-53	24-67
Field goal pct	.415	.358
3 point fg-att	7-17	5-19
3-point FG pct	.412	.263
3-pt FG made per game	7.0	5.0
Free throws-att	7-10	7-12
Free throw pct	.700	.583
F-Throws made per game	7.0	7.0
Rebounds	41	38
Rebounds per game	41.0	38.0
Rebounding margin	+3.0	-
Assists	16	13
Assists per game	16.0	13.0
Turnovers	19	8
Turnovers per game	19.0	8.0
Turnover margin	-11.0	-
Assist/turnover ratio	0.8	1.6
Steals	7	6
Steals per game	7.0	6.0
Blocks	4	2
Blocks per game	4.0	2.0
Winning streak	0	-
Home win streak	0	-
Attendance	0	3834
Home games-Avg/Game	0-0	1-3834
Neutral site-Avg/Game	-	0-0

Team Results

Date	Opponent		Score	Att.
12/10/2023	at Minnesota	L	58-60	3834



2023-24 PURDUE WOMEN'S BASKETBALL GAME NOTES



Official Basketball Box Score - Final

Indiana St. at Purdue

12/20/23 Mackey Arena, West Lafayette
2023-24 Women's Basketball

Game Time: 11:00 AM

Game Duration: 2:01

Attendance: 7,177

Officials: Brad Maxey, Kalei Enterline, Lauren Niemiera

Indiana St. - 63

Record: 4-6

NO.	Name	Min	FG			Rebounds			Fouls		TP	AS	TO	ST	Blocks		+/-
			M-A	3P-M-A	FT-M-A	OR	DR	TOT	PF	FD					BS	BA	
00	Mya Glanton	F 22:59	1-5	0-0	1-2	2	4	6	4	2	3	0	3	0	0	2	-17
24	Chelsea Cain	F 22:27	3-8	0-2	1-3	1	1	2	3	2	7	1	3	2	0	0	-13
4	Ella Sawyer	G 38:55	1-5	0-2	3-4	1	4	5	1	7	5	3	0	3	0	2	-16
8	Kiley Bess	G 30:30	3-10	0-3	0-0	1	1	2	0	1	6	1	2	0	1	1	-16
33	Bella Finnegan	G 24:22	3-11	2-8	4-4	0	2	2	2	3	12	0	1	1	1	0	-19
1	Asia Donald	13:52	3-7	1-2	1-2	1	1	2	3	1	8	0	4	0	0	0	2
31	Lily Niebuhr	17:01	2-3	0-0	2-2	1	2	3	0	1	6	3	2	0	0	0	1
2	Savannah White	15:02	1-2	0-0	0-0	2	1	3	4	0	2	1	0	1	0	0	-3
12	Keslyn Secrist	12:21	4-5	2-2	2-2	1	0	1	0	3	12	0	1	0	0	0	1
13	Saige Stahl	02:31	0-0	0-0	2-2	1	0	1	1	1	2	0	0	0	0	0	0
Team						3	0	3			0			2			
Totals			21-56	5-19	16-21	14	16	30	18	21	63	9	18	7	2	5	-16

Technical Fouls::NONE

Shooting By Period		
1 st FG%	7-14	50.0%
3PT%	1-6	16.7%
FT%	3-4	75%
2 nd FG%	6-12	50.0%
3PT%	2-3	66.7%
FT%	4-6	66.7%
3 rd FG%	4-16	25.0%
3PT%	0-5	0.0%
FT%	4-5	80%
4 th FG%	4-14	28.6%
3PT%	2-5	40.0%
FT%	5-6	83.3%
GM FG%	21-56	37.5%
3PT%	5-19	26.3%
FT%	16-21	76.2%

Dead Ball Rebounds: 3, 2

Purdue - 79

Record: 7-5

NO.	Name	Min	FG			Rebounds			Fouls		TP	AS	TO	ST	Blocks		+/-
			M-A	3P-M-A	FT-M-A	OR	DR	TOT	PF	FD					BS	BA	
20	Mary Ashley Stevenson	F 30:49	5-9	0-1	1-3	2	6	8	1	3	11	2	2	1	0	0	15
34	Caitlyn Harper	F 18:34	1-4	1-3	0-0	1	2	3	3	1	3	3	1	1	1	0	20
10	Jeanae Terry	G 16:50	2-3	0-0	0-0	3	2	5	3	1	4	5	1	0	0	0	17
23	Abbey Ellis	G 32:49	8-13	3-4	9-11	1	2	3	2	7	28	3	5	4	1	1	24
33	Madison Layden	G 34:12	3-8	3-7	2-2	2	3	5	1	2	11	3	0	2	1	0	20
3	Jayla Smith	13:14	0-4	0-0	2-4	2	0	2	1	2	2	1	1	0	1	1	-13
32	Alaina Harper	09:23	1-2	0-0	0-0	0	1	1	3	0	2	0	2	0	1	0	-6
11	McKenna Layden	06:47	0-0	0-0	0-0	0	1	1	0	0	0	0	0	0	0	0	-8
15	Mila Reynolds	15:09	2-5	1-2	0-0	0	2	2	2	2	5	0	1	0	0	0	8
31	Sophie Swanson	14:27	4-6	2-3	0-0	1	1	2	2	0	10	2	3	0	0	0	9
21	Emily Monson	07:46	1-3	1-2	0-0	0	1	1	3	0	3	1	0	0	0	0	-6
Team						2	2	4			0			0			
Totals			27-57	11-22	14-20	14	23	37	21	18	79	20	16	8	5	2	16

Technical Fouls::NONE

Shooting By Period		
1 st FG%	7-12	58.3%
3PT%	4-5	80.0%
FT%	3-4	75%
2 nd FG%	5-18	27.8%
3PT%	2-6	33.3%
FT%	8-10	80%
3 rd FG%	11-18	61.1%
3PT%	3-7	42.9%
FT%	1-1	100%
4 th FG%	4-9	44.4%
3PT%	2-4	50.0%
FT%	2-5	40%
GM FG%	27-57	47.4%
3PT%	11-22	50.0%
FT%	14-20	70.0%

Dead Ball Rebounds: 4, 0

	ISU	PUR
Biggest lead	0 (1 st 10:00)	22 (4 th 3:45)
Best Scoring Run	8 (4 th 2:14)	10 (1 st 7:27)
Lead Changes	0	
Times Tied	0	
Time with Lead	00:00	39:56

	ISU	PUR
Points from	ISU	PUR
Turnovers	15	19
Paint	22	22
Second Chance	13	12
Fast Breaks	0	6
Bench	30	22

	Period by Period Scoring				
	1st	2nd	3rd	4th	TOT
ISU	18	18	12	15	63
PUR	21	20	26	12	79

2023-24 PURDUE WOMEN'S BASKETBALL GAME NOTES



PURDUE BOILERMAKERS

Overall - 7-5 | BIG - 0-1 | Streak - W1 | AP - - | Coaches - - | NET - 84 | Home - 6-0 | Away - 1-3 | Neutral - 0-2 | Post - 0-0
 Offense - 65.5 | Defense - 62.1 | Scoring Margin - 4.4 | Field Goal% - .416 | Field Goal% Defense - .382 | 3-PT.(PG) - .338 (6.6)
 Opp 3-PT.(PG) - .305 (5.1) | FT % (PG) - .777 (13.1) | Rebounding - 36.8 | Rebound Margin - 0.5 | Assists - 14.5 | Turnovers - 16.4 | TO Margin - -0.5

2023-24 SCHEDULE

Opponent	Date/Result
Quincy (ex)	W, 106-45
at #4 UCLA	L, 92-49
Southern	W, 67-50
Texas A&M	W, 72-58
vs. Florida (1)	L, 52-49
vs. Georgia (1)	L, 65-57
Southern Indiana	W, 95-57
Dayton	W, 67-59
Valparaiso	W, 83-56
SEMO	W, 83-57
at Minnesota	L, 60-58
at Notre Dame	L, 76-39
Indiana State	W, 79-63
Wisconsin	Dec. 30
Rutgers	Jan. 2
at Maryland	Jan. 6
Iowa	Jan. 10
at Penn State	Jan. 18
Indiana	Jan. 21
at Michigan State	Jan. 24
Ohio State	Jan. 28
at Nebraska	Jan. 31
Illinois	Feb. 5
at Indiana	Feb. 11
at Northwestern	Feb. 14
Nebraska	Feb. 17
Michigan State	Feb. 21
at Wisconsin	Feb. 25
Penn State	Feb. 28
at Michigan	March 3
Big Ten Tournament	March 6-10

- 1 - Baha Mar Pink Flamingo Championship (The Bahamas)
- 2 - BIG Tournament (Minneapolis)

HEAD COACH KATIE GEARLDS

Purdue Record - 43-31 (2nd)
 Career Record - 271-81 (10th)
 Alma Mater - Purdue '07
 Highlights - 2x NAIA National Champ, 3x NAIA Coach of the Year, 8 years at Marian, 7th Overall to Seattle in 2007 Draft, Legend of Mackey, 2007 All-America

COACHING STAFF

Asso. Head Coach Kelly Komara
 Assistant Coach Mark Stephens
 Assistant Coach Alex Guyton

PRONUNCIATIONS

- 1 - Amiyah Reynolds ah-MY-yah
- 2 - Rashunda Jones ra-SHUN-da
- 15 - Mila Reynolds MEE-la
- 32 - Alaina Harper ah-LAY-na
- Katie Gearlds soft g (like the first name)
- Kelly Komara kom-AIR-ah

1 • Amiyah Reynolds • Fr. • G • 6-1 • South Bend, Ind • South Bend Washington

GP/GS	MIN.	PPG	RPG	APG	STLS	BLKS	FG%	3P%	FT%
-	-	-	-	-	-	-	-	-	-

LAST GAME: Will miss the season due to injury from her senior year of high school

2 • Rashunda Jones • Fr. • G • 5-8 • South Bend, Ind. • South Bend Washington

GP/GS	MIN.	PPG	RPG	APG	STLS	BLKS	FG%	3P%	FT%
8/0	19.9	10.9	3.1	1.5	0.8	0.3	.449	.357	.769

LAST GAME: Did not play

3 • Jayla Smith • Jr. • G • 6-0 • Indianapolis, Ind. • Lawrence North

GP/GS	MIN.	PPG	RPG	APG	STLS	BLKS	FG%	3P%	FT%
11/1	16.7	4.3	1.9	0.7	0.3	0.5	.297	.063	.667

LAST GAME: 2 pts, 1 ast, 2 rebs, 1 blk, 14 mins

10 • Jeanae Terry • 5th • G • 5-11 • Detroit, Mich. • Wayne Memorial • Illinois

GP/GS	MIN.	PPG	RPG	APG	STLS	BLKS	FG%	3P%	FT%
12/12	27.5	4.1	6.9	5.8	1.2	0.4	.289	1.000	.778

LAST GAME: 4 pts, 5 rebs, 5 asts, 17 mins

11 • McKenna Layden • Fr. • G • 6-2 • Kokomo, Ind. • Northwestern

GP/GS	MIN.	PPG	RPG	APG	STLS	BLKS	FG%	3P%	FT%
11/0	12.5	1.8	2.0	0.5	0.5	0.1	.300	.333	.750

LAST GAME: 1 reb, 7 mins

15 • Mila Reynolds • So. • F • 6-3 • South Bend, Ind. • South Bend Washington • Maryland

GP/GS	MIN.	PPG	RPG	APG	STLS	BLKS	FG%	3P%	FT%
6/0	8.9	2.2	1.5	0.3	0.0	0.2	.308	.200	.667

LAST GAME: 5 pts, 2 rebs, 15 mins

20 • Mary Ashley Stevenson • Fr. • F • 6-2 • New York City, N.Y. • The Dalton School

GP/GS	MIN.	PPG	RPG	APG	STLS	BLKS	FG%	3P%	FT%
12/11	27.6	9.1	5.8	1.0	0.5	0.6	.404	.077	.700

LAST GAME: 11 pts, 8 rebs, 2 asts, 1 stl, 31 mins

21 • Emily Monson • Fr. • G • 6-1 • Murfreesboro, Tenn. • Blackman

GP/GS	MIN.	PPG	RPG	APG	STLS	BLKS	FG%	3P%	FT%
8/0	6.1	1.3	0.9	1.0	0.1	0.1	.231	.375	.500

LAST GAME: 3 pts, 1 reb, 1 ast, 8 mins

23 • Abbey Ellis • 5th • G • 5-6 • Melbourne, Australia • Our Lady of Mercy • Cal Poly

GP/GS	MIN.	PPG	RPG	APG	STLS	BLKS	FG%	3P%	FT%
12/12	29.9	14.9	3.3	2.0	1.8	0.1	.423	.302	.860

LAST GAME: 28 pts, 3 rebs, 3 asts, 4 stls, 1 blk, 33 mins

31 • Sophie Swanson • Fr. • 5-10 • Barrington, Ill. • Barrington Prep

GP/GS	MIN.	PPG	RPG	APG	STLS	BLKS	FG%	3P%	FT%
5/0	9.9	6.0	2.4	0.6	0.4	0.0	.429	.353	.000

LAST GAME: 10 pts, 2 rebs, 2 asts, 2-3 3pt, 15 mins

32 • Alaina Harper • So. • F • 6-3 • Hartland, Wis. • Arrowhead • Grand Canyon

GP/GS	MIN.	PPG	RPG	APG	STLS	BLKS	FG%	3P%	FT%
11/0	6.4	0.7	0.8	0.0	0.0	0.1	.800	.000	.000

LAST GAME: 2 pts, 1 reb, 1 blk, 10 mins

33 • Madison Layden • Jr. • G • 6-1 • Kokomo, Ind. • Northwestern

GP/GS	MIN.	PPG	RPG	APG	STLS	BLKS	FG%	3P%	FT%
12/12	29.3	10.7	3.0	1.3	1.4	0.6	.461	.468	.810

LAST GAME: 11 pts, 5 rebs, 3 asts, 2 stls, 1 blk, 35 mins

34 • Caitlyn Harper • R-Sr. • F • 6-2 • Hartland, Wisc. • Arrowhead • Cal Baptist

GP/GS	MIN.	PPG	RPG	APG	STLS	BLKS	FG%	3P%	FT%
12/12	27.1	9.8	4.2	1.3	1.1	0.6	.539	.345	.857

LAST GAME: 3 pts, 3 rebs, 3 asts, 1 stl, 1 blk, 19 mins

• Will miss the season due to a senior-year injury

• Won 2022 3A Championship with her sister Mila and teammate Rashunda Jones
 • No. 43 player by ESPN HoopGuriz
 • Ended career ranked second in assists at Washington with 564 and eighth in points with 1,122

• 3rd among BIG freshmen in scoring
 • 1-of-5 BIG freshmen averaging 8 pts, 3 rebs
 • BIG Freshman of the Week - Nov. 20
 • First Purdue rookie with two 20-pt games since 2017-18
 • 20 pts vs. A&M - First rookie with 20 pts since 2017-18
 • 2022 IHSAA 3A State Champion with the Reynolds

• Made game-winning 3 against Wisconsin in BTT
 • Finished second on the team with 17 blocks last year
 • Scored in double digits in nine games and shot 45.5% from the field as a sophomore
 • Purdue's 10th Indiana Miss Basketball

• 2nd Big Ten player to join 800-reb, 600-ast, 200-stl club
 • Only non-point double-double nationally this year
 • Ranks ninth in Purdue history in assists (436)
 • 2nd Team All-Big Ten, All-Defensive Team in 2022-23
 • Only Purdue player w/multiple triple-doubles
 • Most non-point double-doubles nationally since 09-10 (4)

• Playing with sister Madison for the first time since 2020
 • Won two sectional titles, one regional and reached the 2020 IHSAA 4A State Championship Game
 • Set Northwestern scoring record with 47 points
 • Posted a 78-17 record in high school

• Set career highs for pts and rebs vs. Valpo
 • Playing with sister Amiyah and former teammate Rashunda Jones after one year apart
 • No. 60 player, No. 16 forward ESPN HoopGuriz
 • Totaled 2,099 career points, second in Panther history behind Skylar Diggins-Smith

• 2nd in rebounding, 5th in scoring by BIG freshmen
 • 1-of-5 BIG freshmen averaging 8 pts, 3 rebs
 • 14-10 double-double vs. Valpo, first points-rebounds double-double by a Purdue freshman since 2009-10
 • First freshman with 8 pts, 2 reb, 1 ast, 1 stl, 1 blk in an opener in 2009

• Naismith High School All-America honorable mention
 • Won four regional and three district titles
 • Scored more points as a senior than her first three seasons combined (15.8 ppg)

• Scored in double figures in 10 games this year
 • 156 points away from 1,000 as a Boilermaker
 • Third in the Big Ten in free throw percentage this year
 • Third in the nation, led BIG in FT percentage last year
 • Always wears ribbons sent from her mom Libbie
 • First Australian in program history

• Scored eight points vs. Valpo in eight minutes
 • Made college debut vs. Southern Indiana - 2 pts, 2 rebs
 • 2022 Illinois Miss Basketball and 4A Player of the Year as a junior
 • Invited to the U18 USA Team Trials
 • Four-time all-state, all-conference and all-area honoree

• Scored first Purdue points vs. Southern Indiana
 • Playing on the same team as Caitlyn for the first time
 • Transferred to Purdue after one year at Grand Canyon
 • No. 6 player in Wisconsin by Prep Girls Hoops
 • Tabbed the 2022 Wisconsin Sports Network as the state's top post player

• Second in the Big Ten in 3-pt%, seventh in triples (29)
 • 11th in Purdue history in career 3-pointers with 168
 • Got engaged during holiday break to Rees Zay
 • Playing with McKenna for first time since 20219-20
 • Big Ten All-Freshman & honorable mention in 2020-21
 • First in IHSAA history to lead three Final Fours in scoring

• Set Purdue best with 22 points vs. SEMO
 • Hit double figures in seven games this year
 • 14 pts, 11 rebs vs. A&M - first double-double at Purdue
 • Playing with Alaina for the first time ever
 • 1-of-6 from BIG with 10 ppg & 55 FG% last season
 • 2022 WAC Player of the Year and CoSIDA All-American

Career Highs:
 P -
 R -
 A -
 M -

Career Highs:
 P 22, vs. Valpo, 12/3/23
 R 5, 3 times
 A 3, 2 times
 M 26, vs. USI, 11/26/23

Career Highs:
 P 16, 3 times
 R 7, 3 times
 A 4, 2 times
 M 30, at Penn State, 1/7/23

Career Highs:
 P 28, at Wisconsin, 1/31/21*
 R 17, 2 times
 A 12, 2 times
 M 41, Michigan State, 12/5/22

Career Highs:
 P 8, vs. USI, 11/26/23
 R 6, vs. USI, 11/26/23
 A 2, vs. Southern, 11/12/23
 M 22, vs. USI, 11/26/23

Career Highs:
 P 6, vs. Valpo, 12/3/23
 R 5, vs. Valpo, 12/3/23
 A 2, at Northwestern, 2/9/23*
 M 16, vs. Valpo, 12/3/23

Career Highs:
 P 14, vs. Valpo, 12/3/23
 R 11, at Minnesota, 12/10/23
 A 2, 2 times
 M 36, at Minnesota, 12/10/23

Career Highs:
 P 4, at UCLA, 11/6/23
 R 4, vs. SEMO, 12/6/23
 A 4, vs. Valpo, 12/3/23
 M 14, vs. USI, 11/26/23

Career Highs:
 P 39, at San Diego St, 12/21/20*
 R 10, Long Beach State, 3/10/21*
 A 11, Western Michigan, 11/14/21*
 M 44, Indiana, 1/16/22*

Career Highs:
 P 8, vs. Valpo, 12/3/23
 R 3, vs. Valpo, 12/3/23
 A 1, at Notre Dame, 12/17/23
 M 12, at Notre Dame, 12/17/23

Career Highs:
 P 18, Lindenwood, 11/26/22*
 R 8, Columbia, 12/11/22*
 A 1, 5 times
 M 35, Southern Utah, 3/10/23*

Career Highs:
 P 21, vs. Southern, 11/12/23
 R 8, 4 times
 A 7, Michigan State, 1/3/21
 M 44, Indiana, 1/16/22

Career Highs:
 P 30, at Utah Valley, 1/15/22
 R 14, 3 times
 A 5, at UTRGV, 2/13/21
 M 41, at Chicago State, 3/2/22

