



BOILERMAKERS

2022-23 WOMEN'S BASKETBALL



1999 NCAA CHAMPIONS /// 3 FINAL FOURS /// 26 NCAA TOURNAMENT APPEARANCES /// 9 BIG TEN TOURNAMENT TITLES /// 7 BIG TEN REGULAR SEASON TITLES

2022-23 PURDUE BOILERMAKERS

	2022-23	Streak	Under Gearlds
Overall:	-	L1	17-15
Big Ten opponents:	-	L2	7-11
Non-Conference (RS):	-	W5	9-2
Home:	-	W1	11-6
Away:	-	L2	5-7
Neutral:	-	L1	1-2
Post (BIG, NCAA, WNIT):	-	L1	1-2

TALE OF THE TAPE

PURDUE		PURDUE NW
69.2	Points	63.0
1.8	Margin	-5.4
67.3	Defense	68.4
.422 / .415	Field Goal % / Defense	.416 / .424
.324 / .75	3-Pt % / Per Game	.312 / 5.0
.276 / 4.8	3-Pt% Defense / Per Game	.360 / 5.8
.754 / 10.6	Free Throw % / Per Game	.675 / 13.2
35.8 / -0.7	Reb. Per Game / Margin	32.0 / -3.7
15.8 / 15.1	Assists / Turnovers	11.5 / 16.0
7.0	Steals	6.3
3.9	Blocks	3.2

2022-23 SCHEDULE

Date	P/O Rank	Opponent	Time	TV/Result
------	----------	----------	------	-----------

November

N6	-/-	Purdue Northwest <i>(ex)</i>	2 PM	BTN+
N10	-/-	Marshall	6 PM	BTN+
N13	-/-	Murray State	2 PM	BTN+
N17	-/-	SIU Edwardsville	7 PM	BTN+
N20	-/-	Indiana State	2 PM	BTN+
N24	-/-	Harvard	1:30 PM	FloHoops
N25	-/-	Florida State	1:30 PM	FloHoops
N26	-/-	Oklahoma State	1:30 PM	FloHoops
N30	-/-	Syracuse	6 PM	BTN

December

D5	-/-	Michigan State	7 PM	BTN
D8	-/-	Maryland	6:30 PM	BTN
D11	-/-	Illinois State	2 PM	BTN+
D20	-/-	Campbell	6:30 PM	
D21	-/-	Texas A&M	6:30 PM	
D29	-/-	Iowa	9 PM	BTN

January

J1	-/-	Wisconsin	1 PM	BTN
J7	-/-	Penn State	2 PM	BTN+
J10	-/-	Michigan	6:30 PM	BTN
J14	-/-	Northwestern	3 PM	BTN+
J18	-/-	Nebraska	7 PM	BTN+
J21	-/-	Minnesota	2 PM	BTN+
J26	-/-	Illinois	8 PM	BTN+
J29	-/-	Ohio State	1 PM	BTN+

February

F5	-/-	Indiana	2 PM	FS1
F9	-/-	Rutgers	7 PM	BTN+
F12	-/-	Northwestern	2 PM	BTN+
F15	-/-	Michigan State	7 PM	BTN+
F19	-/-	Indiana	Noon	BTN
F22	-/-	Penn State	7 PM	BTN+
F26	-/-	Minnesota	3 PM	BTN/BTN+

March

3/1-5 Big Ten Tournament | Minneapolis, Minn.

Bold indicates Home Game

* Indicates Big Ten Conference game

~ Cancun Challenge | Cancun, Mexico

^ Big Ten/ACC Challenge

% Las Vegas Holiday Hoops Classic

Big Ten Tournament | Indianapolis, Ind.

All times subject to change

Rankings are from the AP Top 25

THE MATCHUP

PURDUE VS. PURDUE NORTHWEST

The Boilermakers' lone preseason game before the 2022-23 season opens on Nov. 10.

Date / Tip Time - Nov. 6, 2023 / 2 PM

Location - West Lafayette, Ind.

Arena - Mackey Arena

RADIO - Purdue Stretch Radio

Play-by-Play - Tim Newton

Analyst - Jane Schott

TV/STREAM - BTN+

Play-by-Play - TBD

Analyst - TBD

PURDUE BOILERMAKERS

Head Coach: Katie Gearlds (Purdue - 2007)

Record at Purdue: 17-15 (2nd) Career Record: 245-65 (10th)



Record: 17-15, 7-11

NET: 80

Last 5 Games: 1-4

Last Game: Purdue 62, Marquette 77 | WNIT 2nd Round

Ranking: AP - | Coaches -

Streak: L1

Last 10 Games: 4-6

PURDUE NORTHWEST PRIDE

Head Coach: Courtney Locke (Rutgers - 2006)

Record at PNW: 18-55 (4th) Career Record: 18-55 (4th)



Record: 8-18, 5-14 (GLAC)

NET: N/A

Last 5 Games: 0-5

Last Game: Purdue NW 67, Northwood 75 (Feb. 24)

Ranking: AP - | Coaches -

Streak: L5

Last 10 Games: 3-7

THE OPENING TIP

- Purdue opens, unofficially, the 2022-23 campaign Sunday afternoon against Purdue Northwest in the lone exhibition prior to the season opener on Thursday, Nov. 10, against Marshall at Mackey Arena.
- The Boilermakers enter the second year of the Katie Gearlds era after going 17-15 with the program's first postseason appearance since 2017-18, a second-round bid in the WNIT. Purdue posted a 10-win improvement, marking the best win improvement by a coach in her first season at Purdue.
- All five starters are back for the Boilermakers, as the squad returns 76.1% of points scored from a season ago.
- Head coach Katie Gearlds dipped into the transfer portal to welcome Lasha Petree and Caitlyn Harper to the program. Petree spent three years at Bradley (2021 Preseason Naismith Award Watch List) and one at Rutgers, while Harper spent four years at Cal Baptist (2022 WAC Player of the Year). The duo have scored a combined 277 points per game in their careers.

THE MATCHUP

No.	Name	Yr.	Pos.	Ht.	Hometown	GP/GS	MPG	PPG	RPG	APG
2	Ainhua Holzer (<i>ah-NOAH</i>)	Fr.	G	5-9	Martigny, Switzerland	Out for the year				
3	Jayla Smith	So.	G	6-0	Indianapolis, Ind.	-	-	-	-	-
4	Kate Rudini (<i>rue-DEE-nee</i>)	Fr.	G	5-9	Trumbull, Conn.	-	-	-	-	-
5	Cassidy Hardin	5th	G	5-10	Center Grove, Ind.	-	-	-	-	-
10	Jeanae Terry (<i>jah-NAY</i>)	Sr.	G	5-11	Detroit, Mich.	-	-	-	-	-
11	Lasha Petree (<i>LAY-sha PEE-tree</i>)	5th	G	6-0	Detroit, Mich.	-	-	-	-	-
14	Ava Learn	So.	G/F	6-1	Hyde Park, N.Y.	-	-	-	-	-
23	Abbey Ellis	Sr.	G	5-6	Melbourne, Australia	-	-	-	-	-
30	Addison Potts	Fr.	G	6-0	Fort Myers, Fla.	-	-	-	-	-
31	Lilly Stoddard	Fr.	F	6-4	Crown Point, Ind.	-	-	-	-	-
33	Madison Layden	Jr.	G	6-1	Kokomo, Ind.	-	-	-	-	-
34	Caitlyn Harper	R-Sr.	F	6-2	Hartland, Wisc.	-	-	-	-	-
35	Rickie Woltman	Sr.	F	6-4	St. Louis, Mo.	-	-	-	-	-

NUMBERS TO KNOW

239

The Boilermakers set a new single-season record for made 3-pointers last year

6

Purdue has six players listed as a senior, redshirt senior or fifth-year senior, tied for the most in the Big Ten.

662

Purdue's roster has played a combined 662 games in their careers at various stops.

SERIES HISTORY

- Purdue and its sister campus Purdue Northwest (a 2016 merging of Purdue Calumet and Purdue North Central) have never met before in an exhibition.
- The Boilermakers won their first exhibition under head coach Katie Gearlds last year over Findlay, 89-64. Madison Layden led the way with 22 points, while Jeanae Terry had a double-double of 10 points and 10 rebounds.

A WIN WOULD

- Be better than a loss

- Make Purdue 2-0 in exhibitions under Katie Gearlds

- Notch the 43rd straight exhibition victory for the Boilermakers



KG QUICK HITS**HEAD COACH KATIE GEARLDS**

- Born - Oct. 26, 1984 (36 years old)
- Second season as head coach at her alma mater
- Hired as associate head coach on March 26, 2021
- Elevated to head coach on Sept. 16, 2021
- 10th season as a head coach, second at Purdue
- Six-year professional basketball career
- College - Purdue '07
- High School - Beech Grove '03

AT PURDUE (2021-PRESENT)

- Went 17-15 in opening campaign, posting a 10-win improvement, the best jump by a first-year head coach at Purdue
- Head coach just 47 days before the 2021-22 season began
- Announced as the associate head coach on March 26, 2021, as part of a succession plan that, originally, would see her take over the head seat for the 2022-23 campaign

AT MARIAN (2013-2021)

- Went 228-50 (82%) over eight seasons at Marian in the NAIA
- Won back-to-back NAIA National Championships in 2016 and 2017
- Named NAIA National Coach of the Year three times (2016, 2017, 2020)

PROFESSIONAL CAREER (2007-2013)

- Played six professional seasons across the WNBA, Spain, Greece, Portugal and Slovakia
- Went 7th overall to the Seattle Storm in the 2007 WNBA Draft, the highest pick in program history.

AT PURDUE (2004-07)

- 2007 All-America, 4-time All-Big Ten selection, 2007 Big Ten champ
- Tallied 1,974 points, 238 3-pointers and 103 wins at Purdue
- Four NCAA Tournament appearances and a 2007 Elite Eight

AT BEECH GROVE HIGH SCHOOL

- 2003 3A Indiana State Champion, Indiana Miss Basketball
- 2,521 career points, sixth in state history, averaging 30.1 points
- 2003 McDonald's All-America Game MVP, alongside LeBron James

LAST TIME OUT

.

STARTING LINEUPS

Lineup (Record)	Games
1.	

Player	19	20	21	22	23	Total	Record [^]
Abbey Ellis	-	29*	23*	31	-	83*	17-14
Cassidy Hardin	3	8	-	31	-	42	25-17
Caitlyn Harper	3*	5*	10*	32*	-	50*	-
Ainhua Holzer	-	-	-	-	-	-	-
Madison Layden	-	-	21	28	-	49	22-27
Ava Learn	-	-	-	-	-	-	-
Lasha Petree	12	29	27	26	-	94	-
Addison Potts	-	-	-	-	-	-	-
Kate Rudini	-	-	-	-	-	-	-
Jayla Smith	-	-	-	1	-	1	0-1
Lilly Stoddard	-	-	-	-	-	-	-
Jeanae Terry	-	11*	23*	32	-	66*	17-15
Rickie Woltman	-	-	-	22	-	22	11-11

* includes starts at previous school | ^ Record at Purdue

BOILER NOTES**BOILERMAKER BASKETBALL**

- Purdue Women's Basketball is in its 49th season in 2022-23 with an all-time record of 904-526. Last season, Purdue became the 40th program in NCAA Division I history to reach 900 wins and ranks fifth in all-time victories among current Big Ten teams.
- The Boilermakers are the only team from the Big Ten to win a national championship, hoisting the title in 1999.
- The program has reached the NCAA Tournament 26 times with 12 Sweet 16s, eight Elite 8s, three final fours and a trio of national championship game appearances.
- In addition to its NCAA success, Purdue owns the Big Ten record for most tournament titles with nine.

KG ERA YEAR 2

- With a full offseason to prepare for the 2022-23 campaign, head coach Katie Gearlds is back on the sidelines for her second campaign at her alma mater.
- Taking over the reins of the program a mere 47 days ahead of the season last year, Gearlds converted Purdue into a fast-paced, let-fly offense that smashed the program record for 3-pointers made and attempted.
- After the program won just seven games in 2020-21, Gearlds guided the Boilermakers to 17 wins in her initial campaign, marking the biggest win improvement by a first-year head coach at Purdue.
- In the second game against a ranked opponent under Gearlds, Purdue snapped a 19-game skid against AP Top 25 teams with a 66-61 win over No. 17 Florida State at the St. Pete Showcase.
- Gearlds took the Boilermakers back to the postseason for the first time since 2017-18, reaching the second round of the WNIT.
- Purdue's 10-2 mark in the non-conference in 2021-22 was the second best by a first-year head coach in program history.

STABLE OF SHOOTERS

- Following a record-breaking 3-point barrage last season, head coach Katie Gearlds has an even deeper roster to shoot the 3-ball.
- Purdue's current roster has a combined 714 3-pointers in their careers, including previous stops.
- Gearlds would also not hesitate to tell you that she could still out shoot all of them today.

Name	Season 3-Pointers	Career 3-Pointers
Abbey Ellis		121*
Cassidy Hardin		154
Caitlyn Harper		68*
Madison Layden		108
Lasha Petree		214*
Addison Potts		-
Jayla Smith		16
Totals	-	714

* Includes Previous School

MAKING IMPROVEMENTS

- Even with 47 days of preparation, the Boilermakers took strides to improve production and limit opponent success during the 2021-22 season.

Stat	20-21	21-22	22-23
Points Per Game	66.2	69.2	
Opp. Points Per Game	73.5	67.3	
Field Goal Pct.	41.4	42.2	
Opp Field Goal Pct.	44.7	41.5	
3-Pts Per Game	6.2	7.5	
Opp. 3-Pts Per Game	5.5	4.8	
Rebounds Per Game	35.3	35.8	
Assists Per Game	13.9	15.8	
Turnovers Per Game	17.3	15.1	
Steals Per Game	7.3	7.0	
Blocks Per Game	2.6	3.9	

LOCK DOWN ON THE OUTSIDE

- Purdue's 3-point defense in Katie Gearlds first year was the best in the Big Ten, holding opponents to just a 27.6% clip from behind the arc, tied for the second lowest in Purdue history.
- Purdue led the Big Ten with opponents making 27.6% of their 3-point shots and just 4.8 triples per game allowed.
- Those marks were at 29.1% (2nd) and 4.8 against Big Ten foes.
- Purdue kept 23 opponents to six 3-pointers or fewer.
- Purdue has blanked an opponent behind the arc just five times since the 2009-10 season, including twice last year.

LONG-RANGE LASHA

- Purdue dipped into the transfer portal to add Lasha Petree to the roster as a fifth-year senior in this season, following three years at Bradley and playing last year at Rutgers.
- Over four seasons, Petree averaged 13.9 points per game and knocked down 214 triples.
- At Rutgers, the Detroit native totaled 8.3 points per night and hit 38 3-pointers at a 37.6% clip.
- Her final season at Bradley saw her average 18 points per game with 53 triples to earn All-MVC honors for the second straight year and appear on the Naismith Award Watch List.

HARPING ON HARPER

- Purdue's second transfer commitment out of the portal landed the 2022 WAC Player of the Year from Cal Baptist.
- The redshirt senior was named the 11th best transfer from a mid-major to a high-major this offseason by HerHoopsStats.com.
- The Hartland, Wisc., native came to Purdue after leading the WAC in scoring in 2021-22 with 17.7 points per game with a 52.4% shooting clip.
- Harper arrived at Purdue with a career line of 13.8 points, 6.0 rebounds, 1.2 blocks and 1.1 assists per game.
- Harper's honor haul also includes 2022 CoSIDA Academic All-America, 2021-22 WAC Player of the Year, 2021 WAC Tournament MVP.
- Hailing from a basketball family, Harper's father Dale played at Bemidji State and her sister Alaina currently plays for Grand Canyon.

JEANAE TERRY'S HISTORIC SEASON

- In her first campaign in West Lafayette, Jeanae Terry made a monumental impact on both ends of the floor with 7.2 points, 7 rebounds, 5.7 assists and 1.3 steals per game.
- Finishing with a team high 183 assists and 223 rebounds, Terry joined Carol Emanuel (1982, 1983) and Stephanie White as the only Boilermakers to lead the team in assists and rebounds in a single season.
- Terry was the second Boilermaker ever to tally over 150 assists and 200 rebounds in a single season (Stephanie White - 1998 - 200 rebs, 160 asts).
- The Detroit native was the first boilermaker in history to record multiple triple-doubles in a season and career.
- Terry was one of three players in the nation this season to average over 7 points, 7 rebounds, 5 assists and 1 steal per game. Since 2009-10, only three players from the Big Ten and 30 nationally have tallied more than 170 assists and 200 rebounds in a season.

BIG TEN 170 ASSISTS & 200 REBOUNDS SINCE 2009-10

Name	School	Season	Rebounds	Assists
Jeanae Terry	Purdue	2021-22	223	183
Caitlin Clark	Iowa	2021-22	256	257
Samantha Logic	Iowa	2013-14	238	269
Samantha Logic	Iowa	2014-15	237	276
Samantha Logic	Iowa	2012-13	227	217

BOILER NOTES**LAYDEN IS LITERALLY EVERYWHERE**

- Junior Madison Layden has moved into upperclassman status as she enters her second season as a captain.
- Last year, Layden was one of just 10 players nationally to accumulate 130 rebounds (134), 80 assists (80), 60 three-pointers (63) and 45 steals (49).
- She was one of six players to hit 45 3-pointers, dish out 65 assists and record 45 steals in each of the last two seasons.
- Layden was tabbed All-Big Ten honorable mention last year and All-Big Ten Freshman Team in 2020-21.
- The Kokomo, Ind., native stepped into an expanded role as one of the go-to options with 11.6 points, 4.6 rebounds and 2.8 assists per game, leading the Boilermakers in points, steals and minutes played this season.
- Layden has recorded a steal in all but five games in her career.
- The Kokomo, Ind., native hit double figures in 21 of 29 outings last year.
- Layden was the first Boilermaker to score 10 points in 13 straight games since the 2018-19 campaign.

AUSSIE THUNDERDOME YEAR 2

- Abbey Ellis made an instant impact on both ends of the floor to start her Purdue career, quickly becoming a fan favorite in West Lafayette.
- She was named All-Big Ten honorable mention in her first campaign.
- The Aussie finished second on the team in scoring with 11.5 points per game and shot 46.5% from the floor, with 21 games in double figures.
- Ellis notched the 10th best free throw percentage in program history with an 85.4% mark at the line (82-96).
- Ellis led Purdue in scoring 12 times and assists seven times.
- Purdue's first Australian rocks a ribbon in her hair during games from a selection that her mother sends her to wear.
- The senior has also gained a sizeable following on TikTok \ @abbeye_22 with videos shared by Barstool Sports, Slam and more.

SPLASH ZONE

- The Boilermakers enter the 2022-23 season with an impressive arsenal of outside shooters, led by fifth-year seniors Cassidy Hardin (154) and Lasha Petree (214).
- Purdue obliterated the single-game and season marks for 3-pointers made and attempted during the 2021-22 campaign.
- The Boilermakers knocked down 239 triples on the year, topping the previous mark of 209 from 2013-14. The 738 three-point attempts also set the program record, easily surpassing the 592 triple attempts in 2018-19.
- The team matched the single-game 3-point mark with 15 triples against Denver (Dec. 12, 2021)
- The Boilermakers were 12-7 when making seven or more triples and knocked down 12 3-pointers in four outings last year.
- Hardly surprising, when you consider that Gearlds won the 2007 College Slam 3-Point Contest on the men's and women's side.

DOCTOR, DOCTOR GIVE ME THE THREE

- Cassidy Hardin returned for a final year in West Lafayette as a fifth-year senior utilizing the extra year of eligibility granted by the NCAA. Hardin elected to come back after deferring her start to IU Medical School to next fall.
- With her decision, Hardin is just the third player in program history to play in five different seasons.
- Hardin jumped into the starting lineup for the first time in her career last season and connected on a career-high 78 3-pointers at a 33.5% clip.
- In her career, Hardin has made 154 3-pointers and just 23 2-point shots.
- Hardin sank seven 3-pointers against Denver last year, tying for fourth most in a single-game at Purdue, finishing with a career-high 25 points.
- The Bargersville, Ind., native graduated with a degree in honors biochemistry in May of 2022. Her current specialty she would like to pursue is anesthesiology.

NUMBERS TO KNOW UNDER GEARLDS

- Purdue is 14-3 when leading after the first quarter and 15-1 when taking a lead into the fourth quarter.
- The Boilermakers are 12-7 when knocking down seven or more 3-pointers.
- Purdue is 8-5 when shooting 35% from distance or better and 13-3 when shooting 40% or better overall, including 6-0 with a field goal clip above 50%.
- The Boilermakers are 11-2 when outrebounding opponents.
- Purdue is 10-4 when forcing opponents to commit 15 or more turnovers.
- The Boilermakers hold a 12-1 record when scoring 70 or more points, while also posting a 14-5 mark when holding opponents below that mark.

TRIPLE-DOUBLE HISTORY

- Jeanae Terry stands alone in Purdue history, men's & women's basketball, as the only player to ever record multiple triple-doubles in a career.
- The junior recorded the fourth triple-double in program history with 10 points, 11 rebounds and 12 assists against Minnesota, made more impressive by not committing a turnover in the win.
- Her first career triple-double came against Miami in December when she went for 11 points, 12 rebounds and 10 assists.
- In both of her triple-double performances, the last category Terry hit double digits in was points.
- Terry is tied for fifth in Big Ten history.
- Terry now sits with Stephanie White and Danielle Campbell as the only Boilermakers in triple-double club.

PURDUE TRIPLE-DOUBLES

Name	Opponent	Date	Points	Rebounds	Assists/Blocks
Jeanae Terry	Minnesota	1/27/22	10	11	12 asts.
Jeanae Terry	Miami	12/19/21	11	12	10 asts.
Stephanie White	Indiana	1/22/99	20	11	10 asts.
Danielle Campbell	Butler	11/17/07	12	11	11 blks.
Joe Barry Carroll*	Arizona	12/10/77	16	16	11 blks.

*BoilerBall all-time leader in rebounds and blocked shots.

JAYLA'S SOPHOMORE JUMP

- Jayla Smith made significant strides during the offseason to set up a more important role during her sophomore season.
- Smith cemented herself as one of the go-to subs last season with 4.7 points in 15.8 minutes per game.
- Smith made an impressive debut off the bench for the Boilermakers against Western Kentucky with 11 points and four steals in 27 minutes. Since 2009-10, only two Purdue freshman recorded four steals in their college debuts.
- Smith scored over 1,000 points, won one IHSAA 4A State Championship (2020 over Layden's Northwestern) and was named Indiana Miss Basketball during her prep career.

RIGHT ON, RICKIE

- After limited minutes in her first two seasons at Purdue, Rickie Woltman flourished under Gearlds last season averaging 7.0 points and 5.2 rebounds per game with 22 starts.
- Woltman picked up her first two career double-doubles last season.
- After joining the starting lineup last December, Woltman average 8.5 points, 5.7 rebounds and 22 minutes per game.
- The native from St. Louis was tabbed the No. 25 player in the class of 2019 by ESPNW.

MAKING THE FREEBIES

- The Boilermakers did not go to the line that much in 2021-22, attempting 448 free throws to rank 12th in the Big Ten.
- While limited in attempts, the Boilermakers went 338-of-448 for a 75.4% mark, which ranked fourth in the league.
- Abbey Ellis posted the 10th best single-season mark in school history as she knocked down 85.4% of her attempts (82-96) at the line.

INDIANA MISS BASKETBALL

- Jayla Smith is the 10th Indiana Miss Basketball to play at Purdue, winning the award in 2021 after a senior campaign of 19.5 points and 4.6 steals per game at Lawrence North.
- The long history of Purdue welcoming the state's top player extended back to 2003, when Katie Gearlds became the fifth honoree to pick West Lafayette.
- Madison Layden nearly added to the tally in 2020, coming in second.
- Purdue holds the record for most Indiana Miss Basketball winners, followed by Indiana, Notre Dame, Tennessee tied for second with four.

BOILERMAKER MISS BASKETBALL WINNERS

Year	Name	High School	Year	Name	High School
1984	Sharon Versyp	Mishawaka	1991	Jennifer Jacoby	Rossville
1995	Stephanie White	Seeger	1998	Kelly Komara	Lake Central
2003	Katie Gearlds	Beech Grove	2005	Jodi Howell	Alexandria
2008	Brittany Rayburn	Attica	2010	Courtney Moses	Oak Hill
2017	Karissa McLaughlin	Homestead	2021	Jayla Smith	Lawrence North

NATIONAL RANKINGS

	National	BIG	Stat
Assist-to-Turnover	62	8	1.05
Assists	26	5	506
Assists per Game	27	5	15.8
Blocked Shots	63	3	126
Blocked Shots per Game	76	3	3.9
Fewest Fouls	308	14	565
Fewest Turnovers	212	13	484
Field-Goal %	83	9	42.2
Field-Goal % Defense	254	9	41.5
FT Attempts	227	12	448
FT Made	180	10	338
FT %	49	4	75.4
Fouls Per Game	265	14	17.7
Rebound Margin	197	9	-0.7
Rebounds	135	8	1144
Rebounds Per Game	228	12	35.8
Scoring Defense	260	10	67.3
Scoring Margin	169	9	1.8
Scoring Offense	85	10	69.2
Steals	188	8	224
Steals Per Game	237	10	7.0
3-Pointers FG Defense	37	1	276
3-Pointers Attempted	37	2	738
3-Pointers Made	42	4	239
3-Pointers Per Game	49	4	7.5
3-Point % Percentage	95	8	32.4
Turnover Margin	206	9	-0.31
Turnovers Forced	236	9	14.8
Turnovers Per Game	144	8	15.1
Winning Percentage	171	8	53.1

INDIVIDUAL NANTIONAL RANKINGS (TOP-50)

TOP 100 RANKINGS	National	BIG	Stat
Abbey Ellis			
Free Throw Percentage	36	4	85.4%
Cassidy Hardin			
3-pointers Attempted	16	4	233
3-Pointers Made	29	5	78
3-Pointers Per Game	49	7	2.44
Jeanae Terry			
Triple Doubles	3	2	2
Assists	14	3	183
Assists Per Game	16	3	5.7

BIG TEN STANDINGS

	Big Ten	Overall	Streak
Purdue			L1
Ohio State			L1
Iowa			L1
Michigan			L1
Maryland			L1
Nebraska			L2
Northwestern			L1
Michigan State			L1
Minnesota			L1
Penn State			L3
Wisconsin			L1
Rutgers			L1
Illinois			L1
Indiana			L1

LAST TIME OUT

Name	Consecutive Made Free Throws	Straight Games with a Three	Consecutive Starts
2 - Holzer	-	-	-
3 - Smith	1	0	-
4 - Rudini	-	-	-
5 - Hardin	1	9	3
10 - Terry	7	0	32
11 - Petree	13	-	15
14 - Learn	10	-	-
23 - Ellis	4	0	3
30 - Potts	-	-	-
31 - Stoddard	-	-	-
33 - Layden	8	0	-
34 - Harper	9	1	38
35 - Woltman	6	0	3

Opening Tips	Won-Lost	Record in Games

Scoring First	2	3 FT Record in Games

PURDUE IN THE POLLS

Week	AP	Coaches	NET
Preseason	-	-	-
Week 1	-	-	-
Week 2	-	-	-
Week 3	-	-	-
Week 4	-	-	-
Week 5	-	-	-
Week 6	-	-	-
Week 7	-	-	-
Week 8	-	-	-
Week 9	-	-	-
Week 10	-	-	-
Week 11	-	-	-
Week 12	-	-	-
Week 13	-	-	-
Week 14	-	-	-
Week 15	-	-	-
Week 16	-	-	-
FINAL	-	-	-

PURDUE AT MACKEY ARENA

Broke Ground: July 1965
 First Game: Dec. 2, 1967
 First Women's Game: Dec. 2, 1975 | Purdue 78, Illinois 74
 Gearlds Overall: 11-6 | Non-Con: 6-1 | BIG: 4-5
 Purdue Overall: 481-172 | Non-Con: 239-71 | BIG: 241-101
 Home Wins vs. Ranked Teams: 53

LARGEST CROWDS OF KG ERA

Attendance	Date	Opponent	Result
8,005	1/16/22	No. 5 Indiana	L, 73-78 (OT)
5,457	12/21/21	North Alabama	W, 86-53
4,811	2/27/22	Wisconsin	L, 63-62
3,226	12/5/21	No. 18 Ohio State	L, 70-53
3,103	1/13/22	Iowa	L, 79-66

BOILER NOTES**STARTING FIVE RETURNS**

- The Boilermakers brought back their entire starting lineup from 2021-22 with 145 of a possible 160 starts back in West Lafayette.
- Aided by the NCAA waiver following the COVID-19 pandemic, Cassidy Hardin will become just the third player to play in five different seasons in program history.
- The five returners match the most by a Boilermaker squad in the last 10 years, joining the 2019-20 campaign.
- Even with Rickie Woltman, Cassidy Hardin, Jeanae Terry, Madison Layden and Abbey Ellis back for another year in West Lafayette, transfers Lasha Petree and Caitlyn Harper will enter their names into the lineup, meaning Purdue will have an experienced group coming off the bench.

Year	Returning Starters	Starts From Prev. Year	Final Record	NCAA
2013-14	3	97	22-9	Y
2014-15	2	59	11-20	
2015-16	3	94	20-12	Y
2016-17	3	101	23-13	Y
2017-18	2	78	20-14	
2018-19	3	114	19-15	
2019-20	5	170	18-14	
2020-21	3	98	7-16	
2021-22	2	41	17-15	
2022-23	5	145	-	-

SPREADING THE WEALTH

- The Boilermakers have made it a habit of making an extra pass to find open shooters this season with 16.1 assists per game (22nd NCAA, 4th BIG), the most by a Purdue team since 2009-10 and 7.6 3-pointers per game (44th NCAA, 4th BIG).
- Purdue has had 35 different five-assist performances by players.
- The Boilermakers finished fourth in the Big Ten with an assist rate of 62.7%.

WHAT CAME BACK

- Purdue brought back all five starters and a little over 75% of its scoring from a year ago.
- The returning experience also does not include the production of transfers Lasha Petree and Caitlyn Harper to the roster and their combined 27.7 points per game in their careers prior to their arrivals in West Lafayette.

Category	Returns	Left	Pct.
Games Started	145	15	90.6
Minutes	5,242	1,183	81.6
Points	1,683	530	76.1
Rebounds	942	202	82.3
Assists	448	58	88.5
Turnovers	369	115	76.2
Blocked Shots	101	25	80.2
Steals	188	36	83.9
Field Goal Percentage of Returners		620-1477	42.0
3-Point Percentage of Returners		191-589	32.4
Free Throw Percentage of Returners		252-337	74.8
Assist to Turnover Ratio of Returners		448 / 369	1.21

A BASKETBALL LIFE

- Head coach Katie Gearlds is on of just seven former top-10 picks in the WNBA Draft to serve as a head coach this season.
- Gearlds was taken seventh overall by the Seattle Storm in 2007, Purdue's highest draft pick.

TOP-10 WNBA PICKS & CURRENT DI HEAD COACHES

Name	School	Year - Pick, Team
DeLisha Milton-Jones	Old Dominion	1999 - 4th, Los Angeles
Dawn Staley	South Carolina	1999 - 9th, Charlotte
Tamika Williams-Jeter	Dayton	2002 - 6th, Minnesota
Kara Lawson	Duke	2003 - 5th, Sacramento
Nicole Powell	UC Riverside	2004 - 3rd, Charlotte
Lindsay Whalen	Minnesota	2004 - 4th, Connecticut
Katie Gearlds	Purdue	2007 - 7th, Seattle
Laura Harper	Towson	2008 - 10th, Sacramento

- Prior to her All-American career at Purdue, Gearlds was named the 2003 Indiana Miss Basketball and MVP of the McDonald's All-America Game, alongside LeBron James.

MCDONALD'S ALL-AMERICA MVP & CURRENT DI HEAD COACH

Name	School	Year	Alma Mater
Bobby Hurley	Arizona State	1989	Duke
Jerry Stackhouse	Vanderbilt	1993	North Carolina
Shaheen Holloway	Seton Hall	1996	Seton Hall
Katie Gearlds	Purdue	2003	Purdue

SINGLE-SEASON TURNAROUND

- Katie Gearlds guided Purdue to 17 wins this season after inheriting a squad that won just seven contests in 2020-21 47 days ahead of the year.
- The 10-win improvement is the most by a first-year head coach in program history and tied for the third best overall.

SINGLE-SEASON WIN IMPROVEMENTS

SEASON	WINS	IMPROVEMENT	COACH
1994	13	+13	Linn Dunn
1999	34	+11	Carolyn Peck
2022	17	+10	Katie Gearlds
1981	14	+10	Dr. Ruth Jones
2006	26	+9	Kristy Curry
2016	20	+9	Sharon Versyp

NEW YEAR, NEW CULTURE

- The Boilermakers are **ALL-IN** this season under head coach Katie Gearlds. Gearlds, who took over the program a mere 47 days prior last year, had a full offseason to establish a new culture and bring back elite expectations to this storied program.
- On top of spending the full offseason implementing an overhaul of the offense and defensive principles (rather than adjusting on the fly last year), the squad spent the summer building a comradery centered on leadership and excellence on and off the court.
- Prior to the first practice of the year, the coaching staff asked the team for goals. The primary goal was taking the next step for the program and return it to the NCAA Tournament.

BOILER NOTES**RECORD WATCH**

- Check out which Boilermakers are climbing the single-season and career charts this year.

CAREER 3-POINTERS

1. Karissa McLaughlin	244	2018-21
10. KK Houser	167	2010-14
11. Cassidy Hardin	155	2019-Present

CAREER TRIPLE-DOUBLES

1. Jeanae Terry	2	2021-Present
-----------------	---	--------------

SENIOR LEADERSHIP

- Purdue's roster features six players classified as a senior (Terry, Ellis, Woltman), redshirt senior (Harper) or a fifth year senior (Hardin, Petree).
- The elder group entered the season with 558 combined games of experience under their belts.
- The six seniors are tied for the most in the Big Ten (including graduate students) with Michigan state, Penn State, Maryland and Ohio State.

MOST SENIORS

School	Senior/Grads	School	Senior/Grads
Purdue	6	Maryland	6
Michigan St.	6	Ohio St.	6
Penn St.	6	Michigan	5
Indiana	4	Iowa	4
Minnesota	4	Indiana	4
Iowa	4	Minnesota	4
Nebraska	3	Illinois	2

AT THE ALMA MATER

- After an All-American career at Purdue, head coach Katie Gearlds returned to her alma mater in 2021-22 to return the program to national prominence.
- This season, Gearlds is one of 32 coaches in Division I to lead their alma mater.
- She is one of 17 coaches in the six major basketball conferences to lead her alma mater.

Katie Gearlds	Purdue	Lindsay Whalen	Minnesota
Brooke Wychoff	Florida State	Amy Williams	Nebraska
Niele Ivey	Notre Dame	Nicole Powell	Stanford
Felisha Legette-Jack	Syracuse	Robin Harmony	Miami
Krista Gerlich	Texas Tech	Kellie Harper	Tennessee
Jim Flanery	Creighton	Mike Neighbors	Arkansas
Doug Bruno	DePaul	Scott Rueck	Oregon State
Anthony Bozzella	Seton Hall	Adia Barnes	Arizona
Denise Dillon	Villanova		

ADDITIONAL NUMBERS FROM 2021-22

- Purdue was 1-of-14 programs with 15.5 assists, 75 3-pointers per game.
- The Boilermakers were 1-of-15 schools in the six major basketball conferences to shoot over 32% from distance and 75% at the line.
- Purdue was 1-of-7 teams with two players to shoot over 190 3-pointers (Hardin - 233, Layden - 190).
- Purdue kept 23 opponents to six 3-pointers or fewer.
- The Boilermakers are believed to be third team to not score in a quarter and win a game. Purdue did not score in the second quarter in its win over No. 17 Florida State last season.

PURDUE SPECIALTY STATS

	Off TO	Paint	2nd-Ch.	Fast B.	Bench
Marshall					
Murray State					
SIUE					
Indiana State					
Harvard					
FSU					
Okla. State					
Syracuse					
MSU					
Maryland					
Illinois State					
Campbell					
Texas A&M					
Iowa					
Wisconsin					
Penn State					
Michigan					
NU					
Nebraska					
Minnesota					
Illinois					
Ohio State					
Indiana					
Rutgers					
NU					
MSU					
Indiana					
Penn State					
Minnesota					
Totals					
Averages					

PURDUE SCORING BY CLASS

	Fr.	So.	Jr.	Sr.	5th
Marshall					
Murray State					
SIUE					
Indiana State					
Harvard					
FSU					
Okla. State					
Syracuse					
MSU					
Maryland					
Illinois State					
Campbell					
Texas A&M					
Iowa					
Wisconsin					
Penn State					
Michigan					
NU					
Nebraska					
Minnesota					
Illinois					
Ohio State					
Indiana					
Rutgers					
NU					
MSU					
Indiana					
Penn State					
Minnesota					
Totals					
Averages					



KAITE GEARLDS

HEAD COACH | 2ND SEASON AT PURDUE | 10TH SEASON OVERALL | PURDUE '07

@katiegearlds4
@katiegearlds4

Year	Overall	BIG	Non-Con.	BIG Tourney	NCAAs	WNIT	Home	Road	Neutral	vs. Top-25	Unranked
2021-22	17-15	7-11	9-2	0-1	-	1-1	11-6	5-7	1-2	1-6	16-9
2022-23											
Totals	17-15	7-11	9-2	0-1	-	1-1	11-6	5-7	1-2	1-6	16-9
Pct.	.531	.389	.818	.000	-	.500	.647	.416	.334	.143	.640

RECORD-BREAKING FIRST YEAR

- The Katie Gearlds era started sooner than expected in 2021-22, when she took over the program a mere 47 days prior to the season opener.
- Despite being thrust into the head chair, Gearlds guided the program on its first step back to national prominence.
- Purdue finished 17-15 on the year, winning 10 more games than the previous campaign. It was the best win improvement by first-year head coach at Purdue and the third best in program history.
- The Boilermakers finished 10-2 in the non-conference, marking the second-best clip by a first-year head coach.
- Purdue snapped a 19-game skid against ranked opposition when Gearlds and the Boilermakers knocked off No. 17 Florida State at the St. Pete Showcase.
- The Boilermakers reached the postseason for the first time since 2017-18, ending the campaign in the second round of the WNIT.
- Abbey Ellis, Madison Layden and Jeanae Terry all garnered All-Big Ten honorable mention.

COACHING EXPERIENCE

- Spent eight seasons taking Marian University winning back-to-back NAIA National Championships in 2016 and 2017.
- Went 228-50 record, an 82% clip with the Knights.
- Three-time NAIA National Coach of the Year, won 10 total Crossroads League titles and made seven appearances in the NAIA Tournament.
- Guided 12 WBCA NAIA All-America selections, compared to just five in the first 37 years of the program's existence.

PROFESSIONAL CAREER

- Played professionally over six seasons
- Spent three seasons in the WNBA with the Seattle Storm, the highest selection ever from Purdue
- Was taken with the seventh overall pick in the 2007 WNBA Draft, the highest selection ever from Purdue
- Two of her closest teammates and friends over the years are WNBA legend Sue Bird and fellow WNBA great and New Orleans Pelicans Vice President of Basketball Operations Swin Cash.

ALL-AMERICAN AT PURDUE CAREER

- Was a three-year starter from 2004-07.
- Ranks fourth in program history with 1,974 points and was the ninth fastest to join the 1,000-point club.
- Named a Legend of Mackey Arena during its 50th anniversary season.
- Won two Big Ten Tournament titles and never missed the NCAA Tournament with Gearlds in the squad
- Reached three Sweet 16s and one Elite Eight.
- Set the Purdue single-game record with 41 points at Wisconsin on Feb. 18, 2007, and scored 707 points to tie the single-season program record.
- 2007 Third Team AP All-America WBCA All-America Honorable Mention
- Four-time All-Big Ten and the 2004 Big Ten Freshman of the Year.
- Earned a bachelor's degree in sociology and minored in psychology and communications from Purdue in 2007.

KG Quips

Having a similar swagger she had in her playing days, Gearlds is always good for a quick quip and a motivational word for her players.

- **"All In"** – Gearlds' motto for the 2022-23 season. Developing a new culture.
- **"Let's Ride"** – Gearlds' motto for the 2021-22 season. Have fun, play loose.
- **"Be Tough to Beat"** – Drive to compete, work to improve and stay together.

ONE-OF-A-KIND PREP CAREER

- Attended Beech Grove High School.
- Named the Indiana Miss Basketball in 2003.
- Amassed 2,521 career points, good for sixth in IHSAA history.
- Averaged 30.1 points, 9.4 rebounds, 5.4 assists and 5.1 steals per game to lead Beech Grove High School to the 2003 Class 3A State Championship.
- Nike/WBCA All-America, First Team All-State and the Gatorade Indiana Player of the Year.
- A McDonald's All-American, was named the MVP of the McDonald's All-America Game the same season as a young talent from Akron, Ohio – LeBron James.

ELITE LEADERS

- Gearlds is the highest draft pick in Purdue history, going seventh overall to the Seattle Storm in 2007.
- She is one-of-eight current Division I head coaches who were also a Top-10 WNBA pick.
- The MVP of the 2003 McDonald's All-America Game alongside the boy's game honoree LeBron James, Gearlds is one-of-four former MVPs to be a head coach in 2021-22 and the only women's representative.

INSPIRED BY GREATNESS

- Gearlds has a deep bench of basketball legends who have touched and continue to influence her career.
- One of the few people who can say they've worked with two G.O.A.T.s, Gearlds was the MVP of the 2003 McDonald's All-America Game with LeBron James.
- Sue Bird, her teammate with the Storm and a mentor over the last 15 years, inspired Gearlds to go into coaching.
- She also shared the court in Seattle with Swin Cash (V.P. New Orleans Pelicans), Adia Barnes (Arizona head coach) and Lauren Jackson (owner Melbourne Boomers).
- She competed against Chris Paul in the skills challenge ahead of the 2003 McDonald's All-America Game.

AN INDIANA LEGEND

- One of the best products of Indiana basketball, Gearlds claimed a state title, a Big Ten championship and a national title with programs from the Crossroads State.
- Named Indiana Miss Basketball as a senior at Beech Grove in 2003, Gearlds guided the Hornets to a 3A state championship, setting a state record across all classes with 33 points in the final. Today, she ranks 11th in state history with 2,521 career points.
- As a Boilermaker from 2003-07, Gearlds reached the NCAA Tournament four times, won two Big Ten Tournament titles, sits fourth in Purdue history with 1,974 career points and holds the record for points in a season with 707 with Stephanie White.
- Following a six-year professional career, Gearlds took over the reins at Marian in Indianapolis, posting a 227-49 record over eight years, winning three NAIA Coach of the Year honors and claiming two national championships.

GEARLDS' YEAR-BY-YEAR					
Year	School	Overall	Conf.	Post.	Rank
2013-14	Marian	16-16	8-10	-	-
2014-15	Marian	28-6	14-4	NAIA R32	-
2015-16	Marian	32-6	16-2	NAIA Champ	No. 1
2016-17	Marian	35-3	17-1	NAIA Champ	No. 1
2017-18	Marian	32-3	17-1	NAIA R16	No. 8
2018-19	Marian	27-7	16-2	NAIA R32	No. 17
2019-20	Marian	31-3	16-2	NAIA R16	No. 13
2020-21	Marian	27-6	16-0	NAIA R32	No. 9
2021-22	Purdue	17-15	7-11	1-1	-
2022-23	Purdue				
10th Year		245-65	7-11	1-1	-

GEARLDS' TIMELINE	
2021-Present	Head Coach, Purdue
2013-21	Head Coach, Marian
2013	Toyota Huelva, Spain
2011-12	Orion Ibaizabal Galdakao, Portugal
2010	FEA Neas Halkindonas, Greece
2008	Kosit Kosice, Slovakia
2007-09	Seattle Storm, WNBA
2003-07	All-America Guard, Purdue
1999-03	All-America Guard, Beech Grove High School

POWER 5 COACHES UNDER 40			
Age	Name	School	Birthdate
35	Jacie Hoyt	Oklahoma State	4/2/1987
37	Kelly Rae Finley	Florida	4/27/1985
38	Katie Gearlds	Purdue	10/26/1984
39	Carolyn Kieger	Penn State	8/17/1983
39	Yolett McPhee-McCuin	Ole Miss	4/30/1983
39	Amaka Agugua-Hamilton	Virginia	4/13/1983

GEARLDS IN THE PURDUE RECORD BOOK			
Stat	Rank	Total	Year/Game
Single Game Points	1	41	Wisconsin, 2/18/07
Season Points	T1	707	2006-07
Career Points	4	1,974	2004-07
Career Average	4	14.8	2004-07
Season 10+ Point Games	3	33	2006-07
Career 10+ Point Games	4	102	2004-07
Season 30+ Point Games	2	4	2006-07
Career 30+ Point Games	2	6	2004-07
Season Field Goals	2	250	2006-07
Career Field Goals	3	711	2004-07
Season 3-Pointers	T1	88	2006-07
Career 3-Pointers	3	238	2004-07
Season Asst/TO	1	2.57	2005-06
Career Asst/TO	T2	1.64	2004-07
Season Minutes	1	1,359	2006-07
Career Minutes	2	4,475	2004-07

2022-23 ROSTER

No.	Name	Yr.	Pos.	Ht.	Hometown/High School/Previous School
2	Ainhua Holzer	Fr.	G	5-9	Martigny, Switzerland
3	Jayla Smith	So.	G	6-0	Indianapolis, Ind. / Lawrence North
4	Kate Rudini	Fr.	G	5-9	Trumbull, Conn. / Saint Joseph
5	Cassidy Hardin	5th.	G	5-10	Bargersville, Ind. / Center Grove
10	Jeanae Terry	Sr.	G	5-11	Detroit, Mich. / Wayne Memorial / Illinois
11	Lasha Petree	5th	G	6-0	Detroit, Mich. / Arbor Prep / Bradley / Rutgers
14	Ava Learn	So.	G	6-1	Hyde Park, N.Y. / Our Lady of Lourdes
23	Abbey Ellis	Sr.	G	5-6	Melbourne, Australia / Cal Poly
30	Addison Potts	Fr.	G	6-0	Fort Myers, Fla. / South Fort Myers
31	Lilly Stoddard	Fr.	F	6-4	Crown Point, Ind. / Crown Point
33	Madison Layden	Jr.	G	6-1	Kokomo, Ind. / Northwestern
34	Caitlyn Harper	R-Sr.	F	6-2	Hartland, Wisc. / Arrowhead / Cal Baptist
35	Rickie Woltman	Sr.	F	6-3	St. Louis, Mo. / Incarnate Word
Staff	Position	Year at Purdue	Year Coaching	Alma Mater	
Katie Gearlds	Head Coach	2nd Year	10th Year	Purdue - '07	
Beth Couture	Associate Head Coach	7th Year	36th Year	Erksine - '84	
Michael Scruggs	Assistant Coach / Recruiting	4th Year	15th Year	Tennessee - '08	
Alex Guyton	Assistant Coach	4th Year	4th Year	Purdue - '12	
Tiffini Grimes	Deputy Athletic Director / SWA	1st Year		Purdue '05	
Anastacia Kirby	Director of Operations	1st Year		Marian '17	
Lakan Hasser-Smith	Director of Video / Recruiting	1st Year		Marian '16	
Jason Pullara	Director of Strength & Conditioning	4th Year		Purdue '01	
Jessica Lipsett	Director of Athletic Training / Physical Therapy	20th Year		Illinois '00	
Jaelen Nice	Graduate Assistant	1st Year		Purdue '21	
Ainhua Holzer	ah-NOAH	Lilly Stoddard	STAH-dard		
Ava Learn	AA-va	Beth Couture	COO-chur		
Lasha Petree	LAY-sha pee-TREE	Katie Gearlds	Geralds (soft-g)		
Kate Rudini	rue-DEE-nee	Lakan Hasser-Smith	LAKE-en		
Jeanae Terry	Jah-NAY				

Associate Head Coach Beth Couture

Alma Mater: Erskine '84 | Season at Purdue/Career: 7th/36th

Select Experience: Purdue Assistant (16-19), Converse College - Head Coach (14-15), Butler - Head Coach (02-14), Presbyterian - Head Coach (89-02)

Select Highlights: 5 WNIT appearances and 4 20-plus win seasons at Butler, 6 NCAA Division II appearances, Kodak All-American during playing time at Erskine

Assistant Coach Michael Scruggs

Alma Mater: Tennessee '08 | Season at Purdue/Career: 4th/10th

Select Experience: Loyola-Chicago - Assistant (16-19), LSU - Director of Video Operations (12-14), Chattanooga - Assistant (09-11), Tennessee - Practice Player (04-08)

Select Highlights: Practice player at Tennessee during Candace Parker's career, winning two national titles, also learned from Nikki Fargas at LSU and Wes Moore

Assistant Coach Alex Guyton

Alma Mater: Purdue '12 | Season at Purdue/Career: 4th/4th

Select Experience: Purdue - Director of Player Development (19-21), Eastern Illinois - Assistant (17-19), Carmel HS - Assistant (14-17)

Select Highlights: Played 124 games w/ won a pair of Big Ten Tournament titles, 3 NCAA Tournaments and an Elite Eight, coached Michigan's Amy Dilk while at Carmel

Director of Video Lakan Hasser-Smith

Alma Mater: Marian '16 | Season at Purdue/Career: 1st/6th

Select Experience: Marian - Assistant (17-21)

Select Highlights: Marian all-time leading scorer, won an NAIA national title as a player and a coach with Katie Gearlds

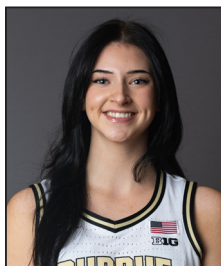
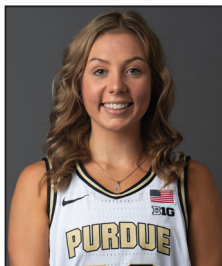
Director of Operations Anastacia Kirby

Alma Mater: Marian '17 | Season at Purdue/Career: 1st/1st

Select Highlights: Won two NAIA national titles playing under Gearlds at Marian

Associate Director of Sports Medicine Jessica Lipsett (Illinois '00)

20th season at Purdue, all with the women's basketball program - 2011 Indiana Athletic Trainers Association Trainer of the Year - Husband, Tanner, was the former WBB SID and now the Wrestling Director of Operations - Rumored to have magic healing powers

**2 AINHOA HOLZER****3 JAYLA SMITH****4 KATE RUDINI****5 CASSIDY HARDIN****10 JEANAE TERRY****11 LASHA PETREE****14 AVA LEARN****23 ABBEY ELLIS****30 ADDISON POTTS****31 ADDISON POTTS****33 MADISON LAYDEN****34 CAITLYN HARPER****35 RICKIE WOLTMAN****KATIE GEARLDS****BETH COUTURE****MICHAEL SCRUGGS****ALEX GUYTON**

 PURDUE WHEN

SCORING BY QUARTERS

Total	527	500	1027	574	604	1178	8	2213
Averages	16.5	15.6	32.1	17.9	18.9	36.8	-	69.2
Opp. Total	492	483	975	537	630	1167	13	2155
Averages	15.4	15.1	30.5	16.8	19.7	36.5	-	67.3

TEAM GAME-BY-GAME COMPARISON

PURDUE WOMEN'S BASKETBALL

2022-23 PURDUE WOMEN'S BASKETBALL GAME NOTES

TEAM STATISTICS BREAKDOWN

All Games	Record	FG-FGA	FG%	3P-3PA	3%	FT-FTA	FT%	Off.	Def.	Tot.	Avg.	F	DQ	Ast.	TO	Blk.	Stl.	Pts.	Avg.
All Games																			
Home																			
Away																			
Neutral																			
Won																			
Lost																			
Big Ten	Record	FG-FGA	FG%	3P-3PA	3%	FT-FTA	FT%	Off.	Def.	Tot.	Avg.	F	DQ	Ast.	TO	Blk.	Stl.	Pts.	Avg.
All Games																			
Home																			
Away																			
Non-Conference	Record	FG-FGA	FG%	3P-3PA	3%	FT-FTA	FT%	Off.	Def.	Tot.	Avg.	F	DQ	Ast.	TO	Blk.	Stl.	Pts.	Avg.
All Games																			
Current Streak	Record	FG-FGA	FG%	3P-3PA	3%	FT-FTA	FT%	Off.	Def.	Tot.	Avg.	F	DQ	Ast.	TO	Blk.	Stl.	Pts.	Avg.
Overall																			
Month	Record	FG-FGA	FG%	3P-3PA	3%	FT-FTA	FT%	Off.	Def.	Tot.	Avg.	F	DQ	Ast.	TO	Blk.	Stl.	Pts.	Avg.
November																			
December																			
January																			
February																			
March																			
Ranked/UR	Record	FG-FGA	FG%	3P-3PA	3%	FT-FTA	FT%	Off.	Def.	Tot.	Avg.	F	DQ	Ast.	TO	Blk.	Stl.	Pts.	Avg.
vs. Ranked																			
vs. Unranked																			
5-Game	Record	FG-FGA	FG%	3P-3PA	3%	FT-FTA	FT%	Off.	Def.	Tot.	Avg.	F	DQ	Ast.	TO	Blk.	Stl.	Pts.	Avg.
1-5																			
6-10																			
11-15																			
16-20																			
21-25																			
26-30																			
31-35																			
36-40																			
Postseason	Record	FG-FGA	FG%	3P-3PA	3%	FT-FTA	FT%	Off.	Def.	Tot.	Avg.	F	DQ	Ast.	TO	Blk.	Stl.	Pts.	Avg.
Overall																			
BIG Tourney																			
NCAA																			

2022-23 PURDUE WOMEN'S BASKETBALL GAME NOTES

INDIVIDUAL HIGHS

Stat	Purdue High	Purdue Low	Opp. High	Opp. Low
Points	101 Denver (12/12/2021)	51 at Northwestern (2/24/2022)	86 at Maryland (12/08/2021)	52 Georgia Tech (12/01/2021)
Field Goals Made	38 Denver (12/12/2021)	18 2x last at Wisconsin (2/13/2022)	33 at Maryland (12/08/2021)	18 at Wisconsin (2/13/2022)
Field Goal Attempts	73 Minnesota (01/27/2022)	50 Rutgers (01/02/2022)	73 at Maryland (12/08/2021)	50 2x last at Wisconsin (2/13/2022)
Field Goal Percentage	.633 (38-60) Denver (12/12/2021)	.305 (18-59) at Wisconsin (2/13/2022)	.500 (25-50) Ohio St. (12/05/2021)	.318 (21-66) North Ala. (12/21/2021)
3-Pointers Made	15 at Illinois (01/20/2022)	2 Georgia Tech (12/01/2021)	9 2x last at Northwestern (2/24/2022)	0 2x last Iowa (01/13/2022)
3-Pointers Attempted	36 Ohio St. (12/05/2021)	11 Georgia Tech (12/01/2021)	31 North Ala. (12/21/2021)	7 2x last Rutgers (01/02/2022)
3-Point Percentage	.652 (15-23) at Illinois (01/20/2022)	.167 (6-36) Ohio St. (12/05/2021)	.438 (7-16) Ohio St. (12/05/2021)	.000 2x last (0-15) Iowa (01/13/2022)
Free Throws Made	22 at Western Ky, 11/10/2021	2 at Northwestern (2/24/2022)	27 Iowa (01/13/2022)	3 North Ala. (12/21/2021)
Free Throws Attempted	29 vs. Dayton, 11/20/21	3 at Northwestern (2/24/2022)	30 Iowa (01/13/2022)	4 North Ala. (12/21/2021)
Free Throw Percentage	1.000 (7-7) at Indiana (02/06/2022)	.444 (4-9) North Ala. (12/21/2021)	.909 (10-11) at Illinois State, 11/17/21	.538 (7-13) Miami (OH) (12/19/2021)
Rebounds	47 North Ala. (12/21/2021)	27 2x last vs. Northwestern (2/4/2022)	45 Georgia Tech (12/01/2021)	28 North Ala. (12/21/2021)
Assists	26 North Ala. (12/21/2021)	7 2x last at Indiana (02/06/2022)	23 at Michigan (01/24/2022)	6 Marshall (11/22/2021)
Steals	13 Denver (12/12/2021)	2 2x last at Northwestern (2/24/2022)	16 Penn State (02/09/2022)	2 2x last at Michigan (01/24/2022)
Blocks	9 at Indiana (02/06/2022)	2 Miami (OH) (12/19/2021)	7 2x last Wisconsin (02/27/2022)	1 4x last Southern Ill. (03/16/2022)
Turnovers	26 at Western Ky, 11/10/2021	9 3x last Minnesota (01/27/2022)	22 Ohio St. (12/05/2021)	7 at Northwestern (2/24/2022)
Fouls	26 2x last Iowa (01/13/2022)	7 North Ala. (12/21/2021)	26 at Western Ky, 11/10/2021	7 at Indiana (02/06/2022)

INDIVIDUAL HIGHS

Stat	Purdue Ind. High	Opponent Ind. High
Points	27 Brooke Moore vs Southern Ill. (03/16/2022)	32, Naz Hillmon at Michigan (01/24/2022)
Field Goals Made	10 Brooke Moore vs Southern Ill. (03/16/2022)	12 2x last Naz Hillmon at Michigan (01/24/2022)
Field Goals Attempted	22 Brooke Moore at Marquette (03/21/2022)	24 Makenna Marisa vs. Penn State (02/09/2022)
3-Pointers Made	7 Cassidy Hardin vs Denver (12/12/2021)	6 Aaliyah Nye at Illinois (01/20/2022)
3-Pointers Attempted	16 Madison Layden vs Ohio St. (12/05/2021)	11 Jade Moore vs North Ala. (12/21/2021)
Free Throws Made	9 2x last Jeanae Terry vs Miami (OH) (12/19/2021)	14 Caitlin Clark vs. Iowa (1/13/2022)
Free Throws Attempted	12 Jeanae Terry vs Miami (OH) (12/19/2021)	16 Caitlin Clark vs. Iowa (1/13/2022)
Rebounds	17 Jeanae Terry at Wisconsin (2/13/2022)	20 Lorela Cubaj vs Georgia Tech (12/01/2021)
Assists	12 Jeanae Terry vs Minnesota (01/27/2022)	11 Hina Suzuki vs North Ala. (12/21/2021)
Steals	5, Abbey Ellis, vs. Western Michigan, 11/14/21	6 Veronica Burton vs. Northwestern (02/04/2022)
Blocks	4 Rickie Woltman at Illinois State, 11/17/21	4 2x last Amani Freeman vs Miami (OH) (12/19/2021)

MARGINS OF VICTORY/DEFEAT

	1	2	3	4	5	6	7	8	9	10	11	12	13	14	15	16	17	18	19	20	21+
Purdue																					
Opponent																					
When Leading																					
Largest Margin of Victory																					
Largest Overall Lead																					
Largest Halftime Lead																					
Largest Lead in a Loss																					
Largest Halftime Lead in a Loss																					
Largest Purdue Run																					
When Trailing																					
Largest Margin of Defeat																					
Largest Overall Deficit																					
Largest Halftime Deficit																					
Largest Deficit Overcome to Win																					
Largest Halftime Deficit in a Win																					
Largest Opponent Run																					

RESULTS/LEADERS

Date	P / O	Opponent	W/L	Score	High Scorer	High Rebounds	High Assists	High Steals	High Blocks	Attend
N6	- / -	Purdue NW								
N10		Marshall								
N13		Murray State								
N17		SIUE								
N20		Indiana State								
N24	1	Harvard								
N25	1	Florida State								
N26	1	Oklahoma State								
N30	2	Syracuse								
D5	*	Michigan State								
D8	*	Maryland								
D11		Illinois State								
D20	3	Campbell								
D21	3	Texas A&M								
D29	*	Iowa								
J1	*	Wisconsin								
J7	*	Penn State								
J10	*	Michigan								
J14	*	Northwestern								
J18	*	Nebraska								
J21	*	Minnesota								
J26	*	Illinois								
J29	*	Ohio State								
F5	*	Indiana								
F9	*	Rutgers								
F12	*	Northwestern								
F15	*	Michigan State								
F19	*	Indiana								
F22	*	Penn State								
F26	*	Minnesota								
M1		Big Ten Tournament								

THE LAST TIME**TEAM SCORING (GAME)**

Won by 40+:	42 (80-38) at Ball State (11/7/18)
Won by 40+ (Big Ten):	43 (88-45) vs. Nebraska (1/26/17)
Lost by 20+:	29 (88-59) vs. No. 8 Maryland (2/25/21)
Lost by 30+:	37 (83-46) at No. 12 Maryland (1/10/21)
Scored 90+:	101 vs. Denver (12/12/21)
Scored 90+ (Big Ten):	91 at Penn State (12/20/20)
Scored 100+:	101 vs. Denver (12/12/21)
Scored 100+ (Big Ten):	110 (110-51) at Michigan (3/12/94)
Scored 40 or Fewer:	40 (40-86) vs. Connecticut (11/24/18)
Scored 50 or Fewer:	49 (62-49) vs. Michigan (2/11/21)
Scored 50 or Fewer and Won:	48 (48-46) at IUPUI (3/15/18)
Allowed 90+:	100 at Ohio State (2/18/21)
Allowed 90+ (Big Ten):	100 at Ohio State (2/18/21)
Allowed 100+:	100 at Ohio State (2/18/21)
Allowed 50 or Fewer:	50, at Ohio State (12/28/19)
Allowed 40 or Fewer:	38 at Ball State (11/7/18)

TEAM SCORING (HALF)

Scored 60 in the First Half:	68 vs. Kent State (12/8/90)
Scored 60 in the Second Half:	60 vs. South Alabama (12/27/94)
Scored 15 Points or Less:	15 (1st) vs. No. 18 Indiana (1/14/21)
Scored 20 Points or Less:	17 (2nd) at Wisconsin (2/13/22)
Allowed 50+:	50 (2nd) at Maryland (12/8/21)
Allowed 15 Points or Less:	15 (1st) at Wisconsin (2/13/22)
Allowed 20 Points or Less:	15 (1st) at Wisconsin (2/13/22)

TEAM SCORING (QUARTER)

Scored 30+:	31 (3rd) vs. Buffalo (12/9/20)
Scored 25+:	26 (2nd) vs. Southern Illinois (3/16/22)
Scored 10 Points or Less:	8 (1st) vs. Wisconsin (2/27/22)
Scored 5 Points or Less:	0 (2nd) vs. Florida State (11/27/21)
Allowed 30+:	32 (4th) vs. Penn State (2/9/22)
Allowed 25+:	32 (4th) vs. Penn State (2/9/22)
Allowed 10 Points or Less:	7 (3rd) vs. Illinois (2/17/22)
Allowed 5 Points or Less:	2 (1st) at Wisconsin (2/13/22)

TEAM SHOOTING

Shot 65% or Higher:	.735 (36-59) vs. Penn State (1/28/18)
Shot 60% or Higher:	.636 (38-60) vs. Denver (12/12/21)
Shot 55% or Higher:	.569 (33-58) vs. Southern Illinois (3/16/22)
Shot 50% or Higher:	.569 (33-58) vs. Southern Illinois (3/16/22)
Shot 30% or Lower:	.296 (21-71) vs. Ohio State (12/5/21)
Shot 25% or Lower:	.241 (13-54) at No. 12 Maryland (1/10/20)
Shot 35% or Lower and Won:	.308 (20-65) vs. Wisconsin (1/21/21)
Opponent Shot 55% or Higher:	.582 (39-67) at Ohio State (2/18/21)
Opponent Shot 50% or Higher:	.500 (25-50) vs. Ohio State (12/5/21)
Opponent Shot 30% or Lower:	.295 (23-78) vs. Michigan State (3/5/20)
Opponent Shot 25% or Lower:	.242 (16-66) at Rutgers (2/19/17)

TEAM 3-POINT SHOOTING

Made 10+:	10 vs. Michigan State (3/3/22)
Made 12+:	15 at Illinois (1/20/22)
Made 15+:	15 vs. Central Michigan (12/28/13), at Illinois (1/20/22)
Made 0:	0 vs. Valparaiso (12/6/20)
Attempted 25+:	27 vs. Michigan State (3/3/22)
Attempted 30+:	30 at Rutgers (2/20/22)
Attempted Five or Less:	4 vs Boston College (12/3/15)
Shot 50%+:	.652 (15-23) at Illinois (1/20/22)
Shot 60%+:	.652 (15-23) at Illinois (1/20/22)

TEAM FREE THROW SHOOTING

Made 25+:	26 vs. Green Bay (3/17/17)
Made 30+:	32 vs. DePaul (11/21/10)
Made Five or Less:	2 at Northwestern (2/24/22)
Made All Attempted:	7-7 at No. 5 Indiana (2/6/22)
Attempted 30+:	31 vs. North Alabama (11/29/20)

Attempted 40+:	41 vs. Minnesota (1/18/04)
Attempted 10 or Less:	3 at Northwestern (2/24/22)
Attempted Five or Less:	3 at Northwestern (2/24/22)

TEAM REBOUNDS

Had 20+ Rebound Margin:	22 (56-34) vs. Western Illinois (11/17/19)
Had 25+ Rebound Margin:	30 (55-25) vs. USC Upstate (11/17/16)
Outrebounded by 20+:	24 (50-26) vs. No. 8 Maryland (2/25/21)
Outrebounded by 25+:	28 (28-56) at Notre Dame (12/29/13)

TEAM ASSISTS

Had 25:	26 vs. North Alabama (12/21/21)
Had 30:	31 vs. Incarnate Word (12/10/15)
Had Five or Fewer:	5 at Indiana (3/6/21)

TEAM TURNOVERS

Committed 10 or Fewer:	10 at Rutgers (2/20/22)
Committed 20+:	22 at Northwestern (2/24/22)
Forced 10 or Fewer:	8 at Ohio State (2/18/21)
Forced 20+:	21 at Western Kentucky (11/10/21)

TEAM CLOSE GAMES

Game Decided by One Point:	L, 63-62 vs. Wisconsin (2/27/22)
Game Decided by Two Points or Less:	L, 54-52, at Wisconsin (2/13/22)
Game Decided by Three Points or Less:	L, 54-52, at Wisconsin (2/13/22)
Back-to-Back Games Decided by Three Points or Less:	L, 63-65 (OT) at Rutgers (1/16/19); W 56-53 vs. Indiana (1/20/19)

Made a Last Second Shot to Win:	Jeanae Terry, 2, vs. Georgia Tech (12/1/21)
	Jeanae Terry, 2, vs. Rutgers (1/3/22)
Lost on a Last Second Shot:	Tory Ozment, 3pt, at Michigan State (2/21/21)

TEAM OVERTIME

Played an Overtime Game:	L, 73-68 vs. Indiana (1/16/22)
Played a Double Overtime Game:	L, 73-82 vs. South Carolina (12/16/18)
Played a Triple Overtime Game:	W, 82-75 vs. Nebraska (2/2/12)
Played Consecutive Overtime Games:	W, 90-88 at Minnesota (1/22/15); L, 71-79 vs. Ohio State (1/25/15)

TEAM COMEBACKS

Came Back from 10+ Down to Win:	W, 66-61 vs. Florida State (11/27/21) (Down 37-26, 8:20, 3rd Quarter)
Came Back from 15+ Down to Win:	W, 81-79 (OT) at Michigan (2/1/18; down 72-56 w/ 6:48 left in the 4th)

TEAM RANKED OPPONENTS

Beat a Ranked Team:	#17 Florida State, 66-61 (11/27/21)
Beat Back-to-Back Ranked Team:	#21 Rutgers, 47-33 (1/10/17) #18 Iowa, 76-70 (1/13/18)
Beat a Ranked Team on the Road:	#10 Maryland, 75-65 (2/15/18)
Beat a Top-10 Ranked Team:	#10 Maryland, 75-65 (2/15/18)
Beat a Top-10 Ranked Team on the Road:	#10 Maryland, 75-65 (2/15/18)
Beat a Top-5 Ranked Team:	#4 Texas A&M, 60-51 (12/4/11)
Beat a Top-5 Ranked Team on the Road:	N/A

INDIVIDUAL SCORING

Scored 20 Points:	27, Brooke Moore, vs. Southern Illinois (3/16/22)
Scored 30 Points:	31, Kayana Traylor at Michigan State (2/21/21)
Scored 35 Points:	38, Brittany Rayburn at Minnesota (1/12/12)
Scored 40 Points:	41, Katie Gearlds at Wisconsin (2/18/07)
Scored 20 Points in Back-to-Back Games:	Brooke Moore 27 vs. Southern Illinois (3/16/22), 20 at Marquette (3/21/22)
Scored 20 Points in Three Straight Games:	Dominique Oden 28 vs. Penn State (1/26/20) 22 at Michigan State (1/30/20), 24 vs. No. 18 Indiana (2/3/20)
Two Players w/ 20+:	22, Dominique Oden & 28, Karissa McLaughlin at Michigan State (1/30/20)
Three Players w/ 20+:	Whitney Bays (24), KK Houser (21), Liza Clemons (20) & Courtney Moses (20) vs. Central Michigan (12/28/13)
Four Players w/ 20+:	Whitney Bays (24), KK Houser (21), Liza Clemons (20) & Courtney Moses (20) vs. Central Michigan (12/28/13)
Five Players in Double Figures:	Karissa McLaughlin (23), Kayana Traylor (15), Ae'Rianna Harris (13), Dominique Oden (12), Jenelle Grant (11) vs. Illinois (1/17/20)
Double Figures in 10 Straight Games:	10, Madison Layden (11/27/21-1/27/22)
Double Figures in 20 Straight Games:	35, Shereka Wright (11/29/01 - 12/29/02)
Double Figures in 30 Straight Games:	35, Shereka Wright (11/29/01 - 12/29/02)

INDIVIDUAL DOUBLE-DOUBLES

Double-Double:	11 pts, 17 rebs, Jeanae Terry vs. Illinois (2/17/22)
Double-Double (Rebounds):	11 pts, 17 rebs, Jeanae Terry vs. Illinois (2/17/22) Double-Double (Assists): 19 pts, 11 ast, Karissa McLaughlin at Wisconsin (12/31/18)
Double-Double (Steals):	27 pts, 12 stl, Joy Holmes vs. Minnesota (1/13/89)
Double-Double (Blocks):	12 pts, 11 blk, Danielle Campbell vs. Butler (11/17/07)
Double-Double (Freshman):	10 pts, 11 ast, Karissa McLaughlin vs. Penn State (1/28/18)
Triple-Double:	12 pts, 11 reb, 11 blk, Danielle Campbell vs. Butler (11/17/07)
20-10 Game:	21 pts, 12 rebs, Ae'Rianna Harris vs. Penn State (1/26/20)
30-10 Game:	30 pts, 10 reb, Stephanie White vs. Washington (3/14/98)
20-20 Game:	29 pts, 20 reb, Joy Holmes at Wisconsin (1/27/91)
Consecutive Double-Doubles:	4, Fatou Diagne, (1/18-1/231)
Double-Double in Three Straight Games:	4, Fatou Diagne, (1/18-1/31)
Double-Double in Five Straight Games:	9, Whitney Bays (12/20/14 - 1/19/15)

Two Players Recorded a Double-Double:	11 pts, 12 reb, Fatou Diagne 15 pts, 10 reb, Ae'Rianna Harris, vs. Michigan State (3/5/20)
Three Players Recorded a Double-Double:	Ae'Rianna Harris (14 pts, 17 rebs) & Tamara Farquhar (13 pts, 14 rebs), vs. Western Illinois (11/17/20)

INDIVIDUAL TRIPLE-DOUBLES

Triple-Double:	11 pts, 12 rebs, 10 asts - Jeanae Terry - vs. Miami (12/19/21)
Before that	12 pts, 11 rebs, 11 blks - Danielle Campbell - vs. Butler (11/17/07)
Before that	20 pts, 11 rebs, 10 asts - Stephanie White - vs. Indiana (1/22/99)

2022-23 PURDUE WOMEN'S BASKETBALL GAME NOTES

THE LAST TIME (CONTINUED)

INDIVIDUAL FIELD GOALS

Made 13 Field Goals: 13, Dominique Oden, vs. Penn State (1/26/20)
 Made 15 Field Goals: 15, Shereka Wright at Michigan (2/17/02)
 Attempted 20 Field Goals: 22, Brooke Moore at Marquette (3/21/22)
 Attempted 25 Field Goals: 25, KK Houser vs. Penn State (1/30/14)
 Attempted 30 Field Goals: 33, MaChelle Joseph at Wisconsin (2/21/92)

INDIVIDUAL 3-POINTERS

Made Six 3-Pointers: 6, Abbey Ellis at Illinois (1/20/22)
 Made Seven 3-Pointers: 7, Cassidy Hardin vs. Denver (12/12/21)
 Made Eight 3-Pointers: 9, Karissa McLaughlin vs. Northwestern (2/17/19)
 Attempted 12 3-Pointers: 12, Cassidy Hardin at Nebraska (1/30/22)
 Attempted 13 3-Pointers: 14, Madison Layden vs. Ohio State (12/5/21)
 Made a 3-Pointer in 20 Straight Games: 24, Madison Layden (12/9/20-11/17/21)
 23, Cassidy Hardin (3/10/21-2/4/22)

INDIVIDUAL FREE THROWS

Made 13 FTs: 14, Courtney Moses at Northwestern (1/26/12)
 Made 15 FTs: 15, Ukari Figgs vs. Washington (3/14/98)
 Attempted 16 FTs: 18, Brittany Rayburn vs. Gardner-Webb (12/21/09)
 Attempted 18 FTs: 18, Brittany Rayburn vs. Gardner-Webb (12/21/09)
 Attempted 20 FTs: 20, Shereka Wright at Northwestern (2/15/04)

INDIVIDUAL STEALS

Grabbed Five Steals: 6, Madison Layden, at Rutgers (2/20/22)
 Grabbed Six Steals: 6, Madison Layden, at Rutgers (2/20/22)
 Grabbed Seven Steals: 8, FahKara Malone vs. Indiana (3/7/08)
 Grabbed Eight Steals: 8, FahKara Malone vs. Indiana (3/7/08)

INDIVIDUAL REBOUNDS

Grabbed 15 Rebounds: 17, Jeanae Terry vs. Illinois (2/17/22)
 Grabbed 16 Rebounds: 17, Jeanae Terry vs. Illinois (2/17/22)
 Grabbed 17 Rebounds: 17, Jeanae Terry vs. Illinois (2/17/22)
 Grabbed 18 Rebounds: 18, Fatou Diagne vs. Penn State (1/31/21)
 Grabbed 19 Rebounds: 19, Whitney Bays vs. Ohio State (1/25/15)
 Grabbed 20 Rebounds: 20, Joy Holmes at Wisconsin (1/27/91)
 Grabbed Eight Off. Rebounds: 9, Jeanae Terry at Wisconsin (2/13/22)

Grabbed 12 Defensive Rebounds: 14, Ae'Rianna Harris vs. Western Illinois (11/17/19)
 Grabbed 10+ Rebounds in Three Straight Games: 3, Ae'Rianna Harris (11/17/19-11/29/19)
 Two Players Grabbed 10+ Rebounds in a Game: Tamara Farquhar (14) & Ae'Rianna Harris (17) vs. Western Illinois (11/17/19)
 Three Players Grabbed 10+ Rebounds in a Game: Bridget Perry (11), Whitney Bays (11) & Liza Clemons (13) vs. Northwestern (2/11/15)

INDIVIDUAL ASSISTS

Dished Out 10 Assists: 12, Jeanae Terry at Northwestern (2/24/22)
 Dished Out 11 Assists: 12, Jeanae Terry at Northwestern (2/24/22)
 Dished Out 12 Assists: 12, Jeanae Terry at Northwestern (2/24/22)
 Dished Out 5+ Assists in Five Straight Games: 6, Jeanae Terry (1/20/22 - 2/6/22)
 Dished Out 10+ Assists in Two Straight Games: KK Houser vs. Ohio State, 10 (1/14/13) & Minnesota, 10 (1/17/13)

INDIVIDUAL BLOCKED SHOTS

Posted Five Blocks: 7, Ae'Rianna Harris vs. Michigan State (3/5/20)
 Posted Six Blocks: 7, Ae'Rianna Harris vs. Michigan State (3/5/20)
 Posted Seven Blocks: 7, Ae'Rianna Harris vs. Michigan State (3/5/20)
 Posted Eight Blocks: 9, Ae'Rianna Harris at No. 5 South Carolina (12/15/19)
 Blocked 5+ Shots in Back-to-Back Games: Ae'Rianna Harris vs. UT Martin, 5 (12/18/17), Saint Mary's, 5 (12/20/17) & at Rutgers, 7 (12/28/17)

INDIVIDUAL MINUTES

Played a Complete Game: Madison Layden vs. Michigan State (3/3/22)
 Played at Least 40 Minutes: Cassidy Hardin, Abbey Ellis, Madison Layden vs. Indiana (1/16/22)
 Played Every Minute of an Overtime Game: Karissa McLaughlin (45) & Dominique Oden (45) at Rutgers (1/16/19)
 Freshman Played 40 Minutes: Madison Layden (40) vs. Rutgers (2/14/21)
 Freshman Played a Complete Game: Madison Layden (40) vs. Rutgers (2/14/21)
 Played Consecutive Complete Games: Kayana Traylor, 2 vs. Michigan (2/11/21)

INDIVIDUAL FOULS

Technical Foul - Player: Tamara Farquhar, vs. Northwestern (12/17/20)
 Technical Foul - Coach: vs. Gonzaga (12/1/19)
 Fouled Out: Ava Learn vs. Michigan State (3/3/22)
 Two Players Fouled Out: Ra Shaya Kyle, Fatou Diagne vs. Michigan (2/11/21)
 Three Players Fouled Out: Tamara Farquhar, Ae'Rianna Harris & Dominique Oden vs. South Carolina (12/16/18 - 2 OT)

CAREER STAT TRACKER (SEASON/CAREER) *TOTAL INCLUDES PREVIOUS SCHOOL

Name	Double-Doubles	10+ Points	20+ Points	13FG	2+ 3FGs	10+ Rebounds	5+ Assists	3+ Blocks	3+ Steals	Complete Game
2 - Holzer	/	/	/	/	/	/	/	/	/	/
3 - Smith	/	/ 5 (3-2)	/	/ 10 (4-6)	/ 4 (1-)	/	/	/	/ 3 (3-0)	/
4 - Rudini	/	/	/	/	/	/	/	/	/	/
5 - Hardin	/	/ 18 (13-5)	/ 1 (1-0)	/ 75 (42-33)	/ 42 (28-14)	/	/ 2 (2-0)	/	/ 2 (2-0)	/
10 - Terry	/ 10* (3-0)	/ 27* (6-2)	/ 3*	/ 23* (2-1)	/ 7* (0-1)	/ 13* (3-3)	/ 35* (11-9)	/ 1*	/ 14* (4-1)	/
11 - Petree	/ 1*	/ 77*	/ 29*	/ 89*	/ 55*	/ 2*	/ 2*	/ 20*	/ 23*	/ 4*
14 - Learn	/	/ 2 (2-0)	/	/	/	/	/	/ 1 (0-1)	/	/
23 - Ellis	/ 2*	/ 53* (10-11)	/ 18* (2-0)	/ 54* (8-9)	/ 32* (6-3)	/ 2*	/ 12* (5-0)	/	/ 18* (3-1)	/
30 - Potts	/	/	/	/	/	/	/	/	/	/
31 - Stoddard	/	/	/	/	/	/	/	/	/	/
33 - Layden	/	/ 29 (17-12)	/ 2 (2-0)	/ 46 (21-25)	/ 31 (16-15)	/	/ 8 (3-5)	/	/ 15 (7-8)	/
34 - Harper	/ 9*	/ 65*	/ 19*	/ 10*	/ 1*	/ 40*	/ 17*	/ 13*	/ 7*	/ 1*
35 - Woltman	/ 2 (2-0)	/ 11 (6-5)	/	/	/	/ 2 (2-0)	/	s / 3 (2-1)	/	/

AINHOA HOLZER

2

Height - 5-9 | **Position** - Guard | **Year** - Freshman | **Major** - Physics
Hometown - Martigny, Switzerland
Instagram - ainhoaholzer | **Twitter** - ainhoaholzer



	Season High	Career High	(*prior school)
Points	-	-	-
Rebounds	-	-	-
Assists	-	-	-
Steals	-	-	-
Blocks	-	-	-
Field Goals	-	-	-
3-Pointers	-	-	-
Free Throws	-	-	-
Minutes	-	-	-

HOLZER QUICK HITS

- Will miss the entire season due to a knee injury sustained in the penultimate game of the 2022 Swiss Basketball League regular season
- Named Sixth Woman and Most Improved Player of the 2021-22 Swiss Basketball League season
- Played four seasons in the Swiss Basketball League
- Called up for the U18 European Championships in 2019 and the U20 Swiss National Team in 2021 for the European Challengers and 2023 European Championships

JAYLA SMITH

3

Height - 6-0 | **Position** - Guard | **Year** - Sophomore | **Major** - Business
Hometown - Indianapolis, Ind. | **High School** - Lawrence North
Instagram - s.jaylasmith | **Twitter** - _JaylaSmith | **TikTok** - s.jaylasmith



	Season High	Career High
Points	-	16, at Nebraska, 1/30/22
Rebounds	-	7, 2x last at Indiana 2/6/22
Assists	-	2, 7x last vs. Illinois, 2/17/22
Steals	-	4 at Western Kentucky, 11/10/21
Blocks	-	3, at Indiana 2/6/22
Field Goals	-	6, at Nebraska, 1/30/22
3-Pointers	-	4, at Nebraska, 1/30/22
Free Throws	-	3, 2x last vs. Penn State, 2/9/22
Minutes	-	27 at Western Kentucky, 11/10/21

SMITH QUICK HITS

- Primary substitute as a freshman with one start
- Knocked down a quartet of 3-pointers against Nebraska last season to set career high with 16 points
- 2021 Indiana Miss Basketball, 10th in program history
- Won the 2020 Indiana 3A State Championship, over Madison Layden's Northwestern, hitting 8 3-pointers
- No. 49 player in the nation and No. 1 in Indiana by MaxPreps
- 3-time First Team All-State selection

SEASON	GP-GS	MIN/AVG	FG-FGA	FG%	3FG-FGA	3FG%	FT-FTA	FT%	OFF	DEF	TOT	AVG	PF-FO	AST	TO	BLK	STL	PTS	AVG
2021-22	30-1	473/15.8	54-140	.386	16-55	.291	16-26	.615	13	39	52	1.7	25-0	21	29	11	22	140	4.7
2022-23																			
TOTAL	30-1	473/15.8	54-140	.386	16-55	.291	16-26	.615	13	39	52	1.7	25-0	21	29	11	22	140	4.7

KATE RUDINI

4

Height - 5-9 | **Position** - Guard | **Year** - Freshman | **Major** - Interior Design
Hometown - Trumbull, Conn. | **High School** - Saint Joseph
Instagram - katerudini | **TikTok** - _katerudini



	Season High	Career High	(*prior school)
Points	-	-	-
Rebounds	-	-	-
Assists	-	-	-
Steals	-	-	-
Blocks	-	-	-
Field Goals	-	-	-
3-Pointers	-	-	-
Free Throws	-	-	-
Minutes	-	-	-

RUDINI QUICK HITS

- Joined the squad in the fall of 2022 as a walk-on
- Connecticut All-State as a senior, after leading Saint Joseph to state runner-up honors

SEASON	GP-GS	MIN/AVG	FG-FGA	FG%	3FG-FGA	3FG%	FT-FTA	FT%	OFF	DEF	TOT	AVG	PF-FO	AST	TO	BLK	STL	PTS	AVG
2022-23																			

CASSIDY HARDIN

5

Height - 5-10 | **Position** - Guard | **Year** - Fifth Year | **Major** - Honors Biochemistry (May '22)
Hometown - Center Grove, Ind. | **High School** - Center Grove
Instagram - cass_hardin | **TikTok** - casshardin5



	Season High	Career High
Points	-	25 vs. Denver, 12/12/21
Rebounds	-	8 vs. Minnesota, 1/27/22
Assists	-	5, 3x last vs. North Alabama, 12/21/21
Steals	-	3 2x last vs. Denver, 12/12/21
Blocks	-	1, 10x last at Indiana, 2/6/22
Field Goals	-	7 vs. Denver, 12/12/21
3-Pointers	-	7 vs. Denver, 12/12/21
Free Throws	-	4 vs. Denver, 12/12/21
Minutes	-	43 vs. Indiana, 1/16/22

HARDIN QUICK HITS

- Deferred starting medical school to return for fifth and final season in 2022-23
- One of three players in program history to play in parts of five seasons
- 154 of 177 career field goals made are 3-pointers
- Holds the third longest 3-point streak in history at 23 games
- Has indoor court at home
- Three-time academic All-Big Ten
- Indiana Doubles Tennis champion in 2017

SEASON	GP-GS	MIN/AVG	FG-FGA	FG%	3FG-FGA	3FG%	FT-FTA	FT%	OFF	DEF	TOT	AVG	PF-FO	AST	TO	BLK	STL	PTS	AVG
2018-19	32-3	421/13.2	25-109	.229	24-97	.247	8-10	.800	7	26	33	1.0	25-0	35	20	2	5	82	2.6
2019-20	29-8	494/17.0	43-121	.355	37-105	.352	2-2	1.000	5	45	50	1.7	27-0	29	28	2	15	125	4.3
2020-21	19-0	231/12.2	18-62	.290	15-54	.278	3-4	.750	6	17	23	1.2	21-0	8	14	0	4	54	2.8
2021-22	32-31	993/31.0	91-257	.354	78-233	.335	18-24	.750	6	75	81	2.5	74-2	50	36	7	23	278	8.7
2022-23																			
TOTAL	112-42	2139/19.1	177-549	.322	154-489	.315	31-40	.775	24	163	187	1.7	147-2	122	98	11	47	539	4.8

JEANAE
TERRY

10

Height - 5-11 | **Position** - Guard | **Year** - Senior | **Major** - Sociology
Hometown - Detroit, Mich. | **High School** - Wayne Memorial | **Previous** - Illinois
Instagram - saucy__nae | **Twitter** - basquetbol_nae | **TikTok** - saucytiktok10



Season High	Career High	(*prior school)
Points	-	28, at Wisconsin, 1/31/21*
Rebounds	-	17, 2x last vs. Illinois, 2/17/22
Assists	-	12 2x last at Northwestern, 2/24/22
Steals	-	5, 4x last at Nebraska, 1/30/22
Blocks	-	4, vs. Chicago State, 11/5/19*
Field Goals	-	9, vs. Penn State, 1/28/21*
3-Pointers	-	3, 3x last vs. Ohio State, 1/7/21*
Free Throws	-	11, at Wisconsin, 1/31/21*
Minutes	-	38 2x last at Michigan, 1/24/22

SEASON	GP-GS	MIN/AVG	FG-FGA	F6%	3FG-FGA	3FG%	FT-FTA	FT%	OFF	DEF	TOT	AVG	PF-FO	AST	TO	BLK	STL	PTS	AVG
2019-20	30-11	693/23.1	65-225	.289	15-57	.263	40-66	.606	34	79	113	3.8	55-1	91	50	17	35	185	6.2
2020-21	23-23	690/30.0	89-226	.394	15-58	.259	54-74	.730	48	131	179	7.8	48-1	101	96	6	41	247	10.7
2021-22	32-32	949/29.6	88-215	.409	3-21	.143	51-74	.689	66	157	223	7.0	80-2	183	100	14	41	230	7.2
2022-23																			
PURDUE	32-32	949/29.6	88-215	.409	3-21	.143	51-74	.689	66	157	223	7.0	80-2	183	100	14	41	230	7.2
TOTAL	85-66	2331/27.4	242-666	.363	33-136	.243	145-214	.678	148	367	515	6.1	183-4	375	246	37	117	662	7.8

LASHA
PETREE

11

Height - 6-0 | **Position** - Guard | **Year** - Fifth Year | **Major** - Master's Management
Hometown - Detroit, Mich. | **High School** - Arbor Prep | **Previous** - Bradley & Rutgers
Instagram - lashapetree | **Twitter** - la3ha | **TikTok** - la3ha



Season High	Career High	(*prior school)
Points	-	36, vs Indiana St. 01/05/20*
Rebounds	-	12 at Evansville 01/11/19*
Assists	-	6 at Drake 02/20/20*
Steals	-	6 vs Chicago St. 12/28/18*
Blocks	-	6, 2x last, vs Loyola Chicago 01/23/21*
Field Goals	-	13 vs Indiana St. 01/05/20*
3-Pointers	-	6, vs North Dakota St. 12/05/19*
Free Throws	-	10, 2x last vs Texas 03/22/21*
Minutes	-	40, 4x last vs. SIU, 2/27/20*

SEASON	GP-GS	MIN/AVG	FG-FGA	F6%	3FG-FGA	3FG%	FT-FTA	FT%	OFF	DEF	TOT	AVG	PF-FO	AST	TO	BLK	STL	PTS	AVG
2018-19	30-12	734/24.5	136-377	.361	56-160	.350	69-106	.651	33	67	100	3.3	62-1	22	59	31	46	397	13.2
2019-20	29-29	930/32.1	161-422	.382	67-208	.322	89-116	.767	22	95	117	4.0	65-0	46	102	50	46	478	16.5
2020-21	29-27	916/31.6	177-454	.390	53-185	.286	116-139	.835	21	90	111	3.8	72-0	43	76	63	40	523	18.0
2021-22	31-26	753/24.3	86-225	.382	38-101	.376	47-57	.825	28	70	98	3.2	58-0	32	61	22	35	257	8.3
2022-23																			
TOTAL	119-94	3333/28.0	560-1478	.379	214-654	.327	321-418	.768	104	322	426	3.6	257-1	143	298	166	167	1655	13.9

AVA
LEARN

14

Height - 6-1 | **Position** - Guard/Forward | **Year** - Sophomore | **Major** - Hospitality, Tourism
Hometown - Hyde Park, N.Y. | **High School** - Our Lady of Lourdes
Instagram - ava.learn | **Twitter** - AvaLearn | **TikTok** - ava.learn



Season High	Career High
Points	-
Rebounds	-
Assists	-
Steals	-
Blocks	-
Field Goals	-
3-Pointers	-
Free Throws	-
Minutes	-

SEASON	GP-GS	MIN/AVG	FG-FGA	F6%	3FG-FGA	3FG%	FT-FTA	FT%	OFF	DEF	TOT	AVG	PF-FO	AST	TO	BLK	STL	PTS	AVG
2021-22	22-0	270/12.3	46-75	.613	0-7	.000	13-18	.722	26	34	60	2.7	59-4	6	17	13	8	105	4.8
2022-23																			
TOTAL	22-0	270/12.3	46-75	.613	0-7	.000	13-18	.722	26	34	60	2.7	59-4	6	17	13	8	105	4.8

ABBIEY
ELLIS

23

Height - 5-6 | **Position** - Guard | **Year** - Senior | **Major** - Early Childhood Education
Hometown - Melbourne, Australia | **High School** - Our Lady of Mercy | **Previous** - Cal Poly
Instagram - _abbeyellis | **Twitter** - _abbeyellis | **TikTok** - abbeye_22



Season High	Career High	(*prior school)
Points	-	39, at San Diego St., 12/21/20*
Rebounds	-	10, vs. Long Beach St., 3/10/21*
Assists	-	11, vs. Western Michigan, 11/14/21
Steals	-	8, vs. Santa Clara, 12/15/20*
Blocks	-	1, 12x last at Wisconsin, 2/13/22
Field Goals	-	14, vs. UC Riverside, 1/23/20*
3-Pointers	-	8, at UC San Diego, 1/1/21*
Free Throws	-	10, at UC San Diego, 1/2/21*
Minutes	-	44 vs. Indiana, 1/16/22

SEASON	GP-GS	MIN/AVG	FG-FGA	F6%	3FG-FGA	3FG%	FT-FTA	FT%	OFF	DEF	TOT	AVG	PF-FO	AST	TO	BLK	STL	PTS	AVG
2019-20	29-29	950/32.8	165-392	.421	48-148	.324	73-87	.839	10	124	134	4.6	75-2	84	94	3	42	451	15.6
2020-21	24-23	753/31.4	127-322	.394	42-116	.362	71-80	.888	17	95	112	4.7	51-2	62	70	3	62	367	15.3
2021-22	32-31	928/29.0	128-275	.465	31-93	.333	82-96	.854	27	74	101	3.2	52-0	95	71	7	35	369	11.5
2022-23																			
PURDUE	32-31	928/29.0	128-275	.465	31-93	.333	82-96	.854	27	74	101	3.2	52-0	95	71	7	35	369	11.5
TOTAL	85-83	2631/31.0	420-989	.425	121-357	.339	226-263	.859	54	293	347	4.1	178-4	241	235	13	139	1187	14.0

TERRY QUICK HITS

- Earned All-Big Ten honorable mention last year
- Only Boilermaker (men or women) in history to record multiple triple-doubles in a season and a career
- Went 2-for-3 on game-winning shots in 2021-22
- Joined Stephanie White as the only Boilermaker to ever record over 150 assists and 200 rebounds in a season
- Is in her second season as a captain at Purdue
- Played two seasons at Illinois
- Shot 34.1% from the field over first two years
- Two-time Class A All-State honoree

PETREE QUICK HITS

- Transferred to Purdue ahead of the 2022-23 season, utilizing her extra year of eligibility from the NCAA.
- Started season with 1,655 career points, good for 67th on the active Division I list
- Spent three seasons at Bradley and one at Rutgers
- Career honors include - Preseason Naismith Award Watch List (2020-21), MVC Preseason Player of the Year (2020-21), First-Team All-MVC (2020-21 & 2019-20), MVC Freshman of the Year (2018-19), MVC Sixth Player of the Year (2018-19)
- Was a finalist for Michigan Miss Basketball as a senior

LEARN QUICK HITS

- Saw action off the bench in 22 games as a freshman
- Totaled 16.4 minutes per game over the final 16 games of the season, including a season-high 13 points at Rutgers
- No. 153 player in the nation and No. 41 guard by Girls Basketball Prep
- Four-time Poughkeepsie Journal All-Star

ELLIS QUICK HITS

- Earned All-Big Ten honorable mention last year
- 85.4% free throw clip last year was the 10th best in a single season in Purdue history
- Crossed the 1,000-point plateau in 2021-22 with a 19-point performance against Indiana at Mackey Arena.
- Developed a sizable following on TikTok @abbeye_22 with videos shared by Barstool Sports, Slam and more.
- Mother Libbie sends several ribbons in different colors for her to wear in games

ADDISON
POTTS

30

Height - 6-0 | Position - Guard | Year - Freshman | Major - Management
 Hometown - Fort Myers, Fla. | High School - South Fort Myers
 Instagram - addison_potts | Twitter - addison_potts3 | TikTok - aapp_33



Season High	Career High	(*prior school)
Points	-	
Rebounds	-	
Assists	-	
Steals	-	
Blocks	-	
Field Goals	-	
3-Pointers	-	
Free Throws	-	
Minutes	-	

POTTS QUICK HITS

- 2022 Prep Girls Hoops Florida Miss Basketball
- 3-time First Team News-Press SWFL All-Area and Player of the Year finalist
- Won six varsity letters, starting high school career in seventh grade
- Totaled 2,098 points during prep career

LILLY
STODDARD

31

Height - 6-4 | Position - Forward | Year - Freshman | Major - Biomedical Sciences
 Hometown - Crown Point, Ind. | High School - Crown Point
 Instagram - lilly.stoddard | Twitter - lillystoddard00 | TikTok - lilly.stoddard



Season High	Career High	(*prior school)
Points	-	
Rebounds	-	
Assists	-	
Steals	-	
Blocks	-	
Field Goals	-	
3-Pointers	-	
Free Throws	-	
Minutes	-	

STODDARD QUICK HITS

- No. 87 player in the nation by ESPNW
- Won 2021 IHSAA 4A State Championship
- Finished with a 103-7 career record in high school
- Four-time conference and sectional champion
- Older Abby Stoddard plays at Butler

MADISON
LAYDEN

33

Height - 6-1 | Position - Guard | Year - Junior | Major - Selling & Sales Management
 Hometown - Kokomo, Ind. | High School - Northwestern
 Instagram - madison_layden | Twitter - madison_layden | TikTok - madison_layden



Season High	Career High
Points	20, 2x last vs. Penn State, 2/9/22
Rebounds	8 3x last vs. Indiana, 1/16/22
Assists	7, vs. Michigan State - 1/3/21
Steals	6, at Rutgers, 2/20/22
Blocks	2 3x last vs. Indiana, 1/16/22
Field Goals	8, 2x last vs. Penn State, 2/9/22
3-Pointers	6, at Iowa - 1/18/21
Free Throws	6, vs. Dayton, 11/20/21
Minutes	44 vs. Indiana, 1/16/22

LAYDEN QUICK HITS

- Big Ten All-Freshman (2021), honorable mention (2022)
- One of six players to hit 45 3-pointers, dish out 65 assists and record 45 steals in each of the last two seasons (2020-21, 2021-22)
- Invited to the USA Basketball U19 World Cup Trials
- Tied freshman record with 7 3pts in a game at Iowa
- 2020 MaxPreps All-American, Indiana Gatorade Player of the Year and runner-up
- First in IHSAA history to lead three Final Fours in scoring
- Ranked 13th in IHSAA in career scoring and one of 46 2,000-point scorers in state history

SEASON	GP-GS	MIN/AVG	FG-FGA	FG%	3FG-FGA	3FG%	FT-FTA	FT%	OFF	DEF	TOT	AVG	PF-FO	AST	TO	BLK	STL	PTS	AVG
2020-21	23-21	729/31.7	70-163	.429	45-111	.405	15-20	.750	12	61	73	3.2	43-0	69	44	5	48	200	8.7
2021-22	29-28	986/34.0	117-337	.347	63-190	.332	40-47	.851	24	110	134	4.6	71-1	80	55	15	49	337	11.6
2022-23																			
TOTAL	52-49	1715/33.0	187-500	.374	108-301	.359	55-67	.821	36	171	207	4.0	114-1	149	99	20	97	537	10.3

CAITLYN
HARPER

34

Height - 6-2 | Position - Forward | Year - R-Senior | Major - Master's Management
 Hometown - Hartland, Wisc. | High School - Arrowhead | Previous - Cal Baptist
 Instagram - caitlynharper32 | Twitter - C_harp32 | TikTok - caitlynharper32



Season High	Career High	(*prior school)
Points	-	30, at Utah Valley, 1/15/22*
Rebounds	-	14, 3x last, vs. Chicago State*
Assists	-	5, at UTRGV, 2/13/21*
Steals	-	5, at Sam Houston State, 1/27/22*
Blocks	-	8, at Chicago State, 3/2/22*
Field Goals	-	12, vs. Utah Valley, 2/26/22
3-Pointers	-	4, vs. Rice, 3/22/21*
Free Throws	-	10, vs. Sam Houston State, 3/10/22*
Minutes	-	41, at Chicago State, 3/2/22*

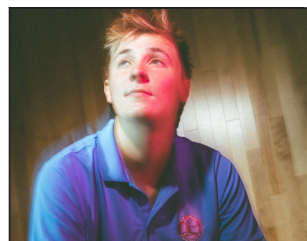
HARPER QUICK HITS

- Joined Purdue in the spring of 2022 with two years of eligibility remaining
- 2022 WAC Player of the Year and CoSIDA All-American
- Led the WAC in scoring with 17.7 points per game
- In 2021, secured All-WAC Second Team, WAC Tournament MVP and WNIT All-Region awards
- Picked up All-Wisconsin honors consecutive years, with a first-team nod in 2018
- Younger sister Alaina plays at Grand Canyon

SEASON	GP-GS	MIN/AVG	FG-FGA	FG%	3FG-FGA	3FG%	FT-FTA	FT%	OFF	DEF	TOT	AVG	PF-FO	AST	TO	BLK	STL	PTS	AVG
2018-19	29-3	470/16.2	100-203	.493	11-52	.212	40-58	.690	36	84	120	4.1	49-0	23	38	21	11	251	8.7
2019-20	5-5	121/24.3	32-56	.571	1-2	.500	16-18	.889	13	32	45	9.0	17-0	7	10	10	2	81	16.2
2020-21	27-10	642/23.8	149-281	.530	27-70	.386	60-76	.789	62	140	202	7.5	67-0	35	50	34	31	385	14.3
2021-22	32-32	964/30.1	223-421	.530	29-95	.305	94-127	.740	36	153	189	5.9	68-0	40	58	51	41	569	17.8
2022-23																			
TOTAL	93-50	2196/23.6	504-961	.524	68-219	.311	210-279	.753	147	409	556	6.0	201-0	105	156	116	85	1286	13.8

2022-23 PURDUE WOMEN'S BASKETBALL GAME NOTES

RICKIE WOLTMAN 35



Height - 6-4 | Position - Forward | Year - Senior | Major - Selling & Sales Management
Hometown - St. Louis, Mo. | High School - Incarnate Word
Instagram - slick_rick35 | Twitter - slick_rick_35 | TikTok - rickiew

Season High	Career High
Points	18 vs. Penn State, 2/9/22
Rebounds	11, 2x last vs. Penn State, 2/9/22
Assists	3 at Rutgers, 2/20/22
Steals	2 2x last at Indiana, 2/6/22
Blocks	4 at Illinois State, 11/17/21
Field Goals	vs. North Alabama, 12/21/21
3-Pointers	-
Free Throws	3, 2x last at Rutgers, 2/20/22
Minutes	33, vs. West Virginia, 11/25/21

WOLTMAN QUICK HITS

- Resurgent junior season, started last 22 games of the year
- Played 20.3 minutes per game last year, following just 4.9 in her first two campaigns
- No. 25 by ESPNW and No. 919 by USA Today
- Won three straight Missouri State Championships
- 2019 WBCA All-America, Missouri All-State

SEASON	GP-GS	MIN/AVG	FG-FGA	FG%	3FG-FGA	3FG%	FT-FTA	FT%	OFF	DEF	TOT	AVG	PF-FO	AST	TO	BLK	STL	PTS	AVG
2019-20	19-0	91/4.8	8-14	.571	0-0	.000	1-3	.333	9	17	26	1.4	19-0	0	11	6	0	17	0.9
2020-21	13-0	65/5.0	5-11	.455	0-0	.000	3-3	1.000	2	9	11	0.8	10-0	2	3	2	2	13	1.0
2021-22	32-22	648/20.3	96-178	.539	0-0	.000	32-52	.615	47	118	165	5.2	80-1	13	41	34	10	224	7.0
2022-23																			
TOTAL	64-22	804/12.6	109-203	.537	0-0	.000	36-58	.621	58	144	202	3.2	109-1	15	55	42	12	254	4.0

NEED TO KNOWS

	Favorite Basketball Shoe	Started Playing Basketball at Age	What Would You Do If you Didn't Play Basketball	Favorite Player To Watch	Favorite WNBA/NBA Team
Ainhua Holzer	Kyries	10	Play Piano	Kyrie Irving, Allen Iverson	Brooklyn Nets, Las Vegas Aces
Jayla Smith	Kobes	7	Volleyball	Tamika Catchings	2014 San Antonio Spurs
Kate Rudini	Anything Nike	5	Soccer	Ryan Arcidiacono	Boston Celtics
Cassidy Hardin	Zoom Freak 4	4	Softball	Steph Curry	Golden State Warriors
Jeanae Terry	Kyries	5	Be a Chef	Maya Moore	Detroit Pistons
Lasha Petree	Whatever Fits	7	Modeling	Kevin Durant	Whatever Team has KD
Ava Learn	Anything Nike	5	Dancing Ballet	Michael Jordan	Milwaukee Bucks
Abbey Ellis	Kobe Mamba Rage	6	No Clue	Sue Bird	Utah Jazz
Addison Potts	Paul Georges	6	Nothing, Literally Nothing	Steph Curry	Golden State Warriors
Lilly Stoddard	Nike GT Cut 2	5	Volleyball	Abby Stoddard (Sister)	Chicago Sky
Madison Layden	Paul George	3	Volleyball	Larry Bird	Indiana Pacers
Caitlyn Harper	Kobes	5	Softball	Kevin Durant or Giannis Antetokounmpo	Milwaukee Bucks
Rickie Woltman	Anything Nike	8	Golf, Softball	Kevin Durant	Boston Celtics

	Random Fact	Hobbies Outside of Basketball	Favorite Color	Three Things You Can't Live Without
Ainhua Holzer	Played piano for nine years, played in her own group	Reading, Baking, Stargazing	Blue	Basketball, Family, Coffee
Jayla Smith	Avid TikToker	Shopping, Sleeping, Family Time	Pink	Fried Chicken, Phone, Frooties
Kate Rudini	Interested in fashion photography	Art	Black	Family, Friends, Cat
Cassidy Hardin	Won state tennis title in high school	Reading, Watch Survivor, Throwing a Frisbee	Orange	Kindle, Family, Mike & Ikes
Jeanae Terry	Has a twin	Cooking, Fashion	Black	Family, Dog, Basketball
Lasha Petree	Can Juggle	Being Outside, Spending Time with Family, TikTok	Emerald Green	Blanket, Backpack, Headphones
Ava Learn	Was born in Virginia	Reading, Watching Movies, Cooking	Purple	Family, Friends, Travel
Abbey Ellis	Can do an incredible Stitch impression (Lilo & Stitch)	Napping, Watching Sports, Frisbee Golf	Purple	Socks, Phone, Coffee
Addison Potts	Enjoys going boating in the Gulf	Sleeping, Netflix, Shopping	Baby Pink	Phone, Water, Bed
Lilly Stoddard	Lettered four years in Volleyball	Hanging out with family and freinds	Black & Gold	Faith, Family, Basketball
Madison Layden	Can Juggle	Shopping	Pink	Family, Friends, Music
Caitlyn Harper	Is a coffee aficionado	Traveling, Coffee	Purple	Family, Friends, Coffee
Rickie Woltman	Can snap with all her fingers	Golf, Watching St. Louis Cardinals, Playing Games	Orange	Family, Friends, Sports

	Favorite Movie	Favorite Singer	Favorite Meal to Make	Dream Job	Dream Job as a Child
Ainhua Holzer	Interstellar	Lauryn Hill	Red Curry Chicken	Basketball Player/Astrophysicist	Astrophysicist
Jayla Smith	Like Mike	Beyonce	Steak & Potatoes	Own an NBA Franchise	WNBA Player
Kate Rudini	Tangled	Sza	Annie's Mac and Cheese	Interior Designer	Princess
Cassidy Hardin	Avengers: Endgame	Taylor Swift	Creamy Parmesan Chicken	Anesthesiologist	Doctor
Jeanae Terry	Lion King	Lil Baby	Salmon & Mashed Potatoes	Basketball Player	Golfer
Lasha Petree	Avatar	Lil Baby	Fried Tacos	Basketball Player	Dentist
Ava Learn	King Arthur Legend of the Sword	Adele	Cookies/Brownies	Working in Professional Sports	Rockstar
Abbey Ellis	Hidden Figures	Adele	Pasta	Child Psychologist	Zookeeper
Addison Potts	Rush Hour 2	Kevin Gates	Pasta	Basketball Player	Police Officer
Lilly Stoddard	Thor: Ragnarok	Black Eyed Peas	Chicken & Pasta	Orthopedic Surgeon	Orthodontist
Madison Layden		Justin Bieber	Tacos		Teacher
Caitlyn Harper	Bridesmaids	Rihanna/Adele	Salmon Tacos	NBA Front Office	Doctor
Rickie Woltman	Grown Ups	Luke Bryan/Jason Aldean	Mac n Cheese	Own a Sports Complex	Basketball Player

2022-23 PURDUE WOMEN'S BASKETBALL GAME NOTES

3 | Jayla Smith

2022-23	Min.	FG	3FG	FT	O-D-T	PF	Pts	A	To	S	B	+/-
PNW (ex)												
Marshall												
Murray St.												
SIUE												
Indiana St.												
Harvard												
FSU												
Okla. State												
Syracuse												
MSU												
Maryland												
Illinois State												
Iowa												
Wisconsin												
Penn State												
Michigan												
NU												
Nebraska												
Minnesota												
Illinois												
Ohio State												
Indiana												
Rutgers												
NU												
MSU												
Indiana												
Penn State												
Minnesota												

* Started

^Big Ten Tournament

4 | Kate Rudini

2022-23	Min.	FG	3FG	FT	O-D-T	PF	Pts	A	To	S	B	+/-
PNW (ex)												
Marshall												
Murray St.												
SIUE												
Indiana St.												
Harvard												
FSU												
Okla. State												
Syracuse												
MSU												
Maryland												
Illinois State												
Iowa												
Wisconsin												
Penn State												
Michigan												
NU												
Nebraska												
Minnesota												
Illinois												
Ohio State												
Indiana												
Rutgers												
NU												
MSU												
Indiana												
Penn State												
Minnesota												

* Started

^Big Ten Tournament

5 | Cassidy Hardin

2022-23	Min.	FG	3FG	FT	O-D-T	PF	Pts	A	To	S	B	+/-
PNW (ex)												
Marshall												
Murray St.												
SIUE												
Indiana St.												
Harvard												
FSU												
Okla. State												
Syracuse												
MSU												
Maryland												
Illinois State												
Iowa												
Wisconsin												
Penn State												
Michigan												
NU												
Nebraska												
Minnesota												
Illinois												
Ohio State												
Indiana												
Rutgers												
NU												
MSU												
Indiana												
Penn State												
Minnesota												

* Started

^Big Ten Tournament

10 | Jeanae Terry

2022-23	Min.	FG	3FG	FT	O-D-T	PF	Pts	A	To	S	B	+/-
PNW (ex)												
Marshall												
Murray St.												
SIUE												
Indiana St.												
Harvard												
FSU												
Okla. State												
Syracuse												
MSU												
Maryland												
Illinois State												
Iowa												
Wisconsin												
Penn State												
Michigan												
NU												
Nebraska												
Minnesota												
Illinois												
Ohio State												
Indiana												
Rutgers												
NU												
MSU												
Indiana												
Penn State												
Minnesota												

* Started

^Big Ten Tournament

2022-23 PURDUE WOMEN'S BASKETBALL GAME NOTES

11 | Lasha Petree

2022-23	Min.	FG	3FG	FT	O-D-T	PF	Pts	A	To	S	B	+/-
PNW (ex)												
Marshall												
Murray St.												
SIUE												
Indiana St.												
Harvard												
FSU												
Okla. State												
Syracuse												
MSU												
Maryland												
Illinois State												
Iowa												
Wisconsin												
Penn State												
Michigan												
NU												
Nebraska												
Minnesota												
Illinois												
Ohio State												
Indiana												
Rutgers												
NU												
MSU												
Indiana												
Penn State												
Minnesota												

* Started

^Big Ten Tournament

14 | Ava Learn

2022-23	Min.	FG	3FG	FT	O-D-T	PF	Pts	A	To	S	B	+/-
PNW (ex)												
Marshall												
Murray St.												
SIUE												
Indiana St.												
Harvard												
FSU												
Okla. State												
Syracuse												
MSU												
Maryland												
Illinois State												
Iowa												
Wisconsin												
Penn State												
Michigan												
NU												
Nebraska												
Minnesota												
Illinois												
Ohio State												
Indiana												
Rutgers												
NU												
MSU												
Indiana												
Penn State												
Minnesota												

* Started

^Big Ten Tournament

23 | Abbey Ellis

2022-23	Min.	FG	3FG	FT	O-D-T	PF	Pts	A	To	S	B	+/-
PNW (ex)												
Marshall												
Murray St.												
SIUE												
Indiana St.												
Harvard												
FSU												
Okla. State												
Syracuse												
MSU												
Maryland												
Illinois State												
Iowa												
Wisconsin												
Penn State												
Michigan												
NU												
Nebraska												
Minnesota												
Illinois												
Ohio State												
Indiana												
Rutgers												
NU												
MSU												
Indiana												
Penn State												
Minnesota												

* Started

^Big Ten Tournament

30 | Addison Potts

2022-23	Min.	FG	3FG	FT	O-D-T	PF	Pts	A	To	S	B	+/-
PNW (ex)												
Marshall												
Murray St.												
SIUE												
Indiana St.												
Harvard												
FSU												
Okla. State												
Syracuse												
MSU												
Maryland												
Illinois State												
Iowa												
Wisconsin												
Penn State												
Michigan												
NU												
Nebraska												
Minnesota												
Illinois												
Ohio State												
Indiana												
Rutgers												
NU												
MSU												
Indiana												
Penn State												
Minnesota												

* Started

^Big Ten Tournament

2022-23 PURDUE WOMEN'S BASKETBALL GAME NOTES

31 | Lilly Stoddard

2022-23	Min.	FG	3FG	FT	O-D-T	PF	Pts	A	To	S	B	+/-
PNW (ex)												
Marshall												
Murray St.												
SIUE												
Indiana St.												
Harvard												
FSU												
Okla. State												
Syracuse												
MSU												
Maryland												
Illinois State												
Iowa												
Wisconsin												
Penn State												
Michigan												
NU												
Nebraska												
Minnesota												
Illinois												
Ohio State												
Indiana												
Rutgers												
NU												
MSU												
Indiana												
Penn State												
Minnesota												

* Started

^Big Ten Tournament

33 | Madison Layden

2022-23	Min.	FG	3FG	FT	O-D-T	PF	Pts	A	To	S	B	+/-
PNW (ex)												
Marshall												
Murray St.												
SIUE												
Indiana St.												
Harvard												
FSU												
Okla. State												
Syracuse												
MSU												
Maryland												
Illinois State												
Iowa												
Wisconsin												
Penn State												
Michigan												
NU												
Nebraska												
Minnesota												
Illinois												
Ohio State												
Indiana												
Rutgers												
NU												
MSU												
Indiana												
Penn State												
Minnesota												

* Started

^Big Ten Tournament

34 | Caitlyn Harper

2022-23	Min.	FG	3FG	FT	O-D-T	PF	Pts	A	To	S	B	+/-
PNW (ex)												
Marshall												
Murray St.												
SIUE												
Indiana St.												
Harvard												
FSU												
Okla. State												
Syracuse												
MSU												
Maryland												
Illinois State												
Iowa												
Wisconsin												
Penn State												
Michigan												
NU												
Nebraska												
Minnesota												
Illinois												
Ohio State												
Indiana												
Rutgers												
NU												
MSU												
Indiana												
Penn State												
Minnesota												

* Started

^Big Ten Tournament

35 | Rickie Woltman

2022-23	Min.	FG	3FG	FT	O-D-T	PF	Pts	A	To	S	B	+/-
PNW (ex)												
Marshall												
Murray St.												
SIUE												
Indiana St.												
Harvard												
FSU												
Okla. State												
Syracuse												
MSU												
Maryland												
Illinois State												
Iowa												
Wisconsin												
Penn State												
Michigan												
NU												
Nebraska												
Minnesota												
Illinois												
Ohio State												
Indiana												
Rutgers												
NU												
MSU												
Indiana												
Penn State												
Minnesota												

* Started

^Big Ten Tournament



2021-22 Purdue Women's Basketball Combined Team Statistics All games

Page 1/1
as of Mar 23, 2022

Game Records

Record	Overall	Home	Away	Neutral
ALL GAMES	17-15	11-6	5-7	1-2
CONFERENCE	7-11	4-5	3-6	0-0
NON-CONFERENCE	10-4	7-1	2-1	1-2

Score by Periods

Team	1st	2nd	3rd	4th	OT	TOT
Purdue	527	500	574	604	8	2213
Opponents	492	483	537	630	13	2155

Team Box Score

No.	Player				Total		3-Point		F-Throw		Rebounds											
		GP-GS	MIN	AVG	FG-FGA	FG%	3FG-3FGA	3FG%	FT-FTA	FT%	OFF	DEF	TOT	AVG	PF	DQ	A	TO	BLK	STL	PTS	AVG
33	LAYDEN, Madison	29-28	986:13	34.0	117-337	.347	63-190	.332	40-47	.851	24	110	134	4.6	71	1	80	55	15	49	337	11.6
23	ELLIS, Abbey	32-31	927:43	29.0	128-275	.465	31-93	.333	82-96	.854	27	74	101	3.2	52	0	95	71	7	35	369	11.5
24	KYLE, Ra Shaya	9-9	173:35	19.3	39-71	.549	0-1	.000	21-28	.750	11	40	51	5.7	32	0	2	19	11	1	99	11.0
0	MOORE, Brooke	32-1	634:05	19.8	119-299	.398	42-115	.365	50-60	.833	18	44	62	1.9	55	0	32	58	8	26	330	10.3
5	HARDIN, Cassidy	32-31	992:48	31.0	91-257	.354	78-233	.335	18-24	.750	6	75	81	2.5	74	2	50	36	7	23	278	8.7
10	TERRY, Jeanae	32-32	948:34	29.6	88-215	.409	3-21	.143	51-74	.689	66	157	223	7.0	80	2	183	100	14	41	230	7.2
35	WOLTMAN, Rickie	32-22	648:07	20.3	96-178	.539	0-0	.000	32-52	.615	47	118	165	5.2	80	1	13	41	34	10	224	7.0
14	LEARN, Ava	22-0	270:04	12.3	46-75	.613	0-7	.000	13-18	.722	26	34	60	2.7	59	4	6	17	13	8	105	4.8
3	SMITH, Jayla	30-1	473:03	15.8	54-140	.386	16-55	.291	16-26	.615	13	39	52	1.7	25	0	21	29	11	22	140	4.7
2	DOUMBIA, Rokia	13-3	175:14	13.5	22-43	.512	4-12	.333	3-4	.750	19	31	50	3.8	15	0	17	12	1	6	51	3.9
4	ORIYOMI, Mide	16-0	143:43	9.0	12-34	.353	2-11	.182	11-17	.647	10	17	27	1.7	16	0	6	16	1	2	37	2.3
30	GONY, Nyagoa	12-1	40:46	3.4	5-14	.357	0-0	.000	1-2	.500	6	4	10	0.8	6	0	1	9	4	1	11	0.9
13	STALLINGS, Ajah	4-1	11:06	2.8	1-2	.500	0-0	.000	0-0	.000	1	1	2	0.5	0	0	0	1	0	0	2	0.5
Team											62	64	126					20				
Total		32	6425		818-1940	.422	239-738	.324	338-448	.754	336	808	1144	35.8	565	10	506	484	126	224	2213	69.2
Opponents		32	6434		799-1925	.415	154-557	.276	403-562	.717	359	808	1167	36.5	489	8	448	474	104	209	2155	67.3

Team Statistics

	PURDUE	OPP
Scoring	2213	2155
Points per game	69.2	67.3
Scoring margin	+1.8	-
Field goals-att	818-1940	799-1925
Field goal pct	.422	.415
3 point fg-att	239-738	154-557
3-point FG pct	.324	.276
3-pt FG made per game	7.5	4.8
Free throws-att	338-448	403-562
Free throw pct	.754	.717
F-Throws made per game	10.6	12.6
Rebounds	1144	1167
Rebounds per game	35.8	36.5
Rebounding margin	-0.7	-
Assists	506	448
Assists per game	15.8	14.0
Turnovers	484	474
Turnovers per game	15.1	14.8
Turnover margin	-0.3	-
Assist/turnover ratio	1.0	0.9
Steals	224	209
Steals per game	7.0	6.5
Blocks	126	104
Blocks per game	3.9	3.3
Winning streak	0	-
Home win streak	1	-
Attendance	53465	34566
Home games-Avg/Game	17-3145	12-2881
Neutral site-Avg/Game	-	3-1966

Team Results

Date	Opponent		Score	Att.
11/10/2021	at Western Ky.	W	79-69	1214
11/14/2021	Western Mich.	W	70-62	2062
11/17/2021	at Illinois St.	W	76-64	672
11/20/2021	Dayton	L	62-78	1938
11/22/2021	Marshall	W	70-60	1526
11/25/2021	vs West Virginia	L	57-65	401
11/27/2021	vs Florida St.	W	66-61	250
12/01/2021	Georgia Tech	W	53-52	1539
12/05/2021	Ohio St.	L	53-70	3236
12/08/2021	at Maryland	L	71-86	4254
12/12/2021	Denver	W	101-68	2791
12/19/2021	Miami (OH)	W	82-76	3006
12/21/2021	North Ala.	W	86-53	5457
01/02/2022	Rutgers	W	60-58	3074
01/09/2022	at Michigan St.	W	69-59	4220
01/13/2022	Iowa	L	66-79	3103
01/16/2022	Indiana	Lot	68-73	8505
01/20/2022	at Illinois	W	89-67	1038
01/24/2022	at Michigan	L	66-79	1845
01/27/2022	Minnesota	W	80-66	2901
01/30/2022	at Nebraska	L	66-81	4810
02/04/2022	Northwestern	L	67-80	2862
02/06/2022	at Indiana	L	57-64	7891
02/09/2022	Penn St.	W	81-77	2902
02/13/2022	at Wisconsin	L	52-54	2869
02/17/2022	Illinois	W	70-54	2983
02/20/2022	at Rutgers	W	70-59	2961
02/24/2022	at Northwestern	L	51-68	1481
02/27/2022	Wisconsin	L	62-63	4811
03/03/2022	vs Michigan St.	L	69-73	5247
03/16/2022	Southern Ill.	W	82-60	769
03/21/2022	at Marquette	L	62-77	1311

LAST TIME OUT



Official Basketball Box Score - Final

Purdue at Marquette

03/21/22 Al McGuire Center, Milwaukee
2021-22 Women's Basketball

Game Time: 7:00 PM

Game Duration: 1:54

Attendance: 1,311

Officials: Mark Resch, Bryan Enterline, Lauren Niemiera

Purdue - 62

Record: 17-15

NO. Name		Min	FG	3P	FT	Rebounds			Fouls		TP	AS	TO	ST	Blocks		+/-
			M-A	M-A	M-A	OR	DR	TOT	PF	FD					BS	BA	
35	Rickie Woltman	F 25:29	4-7	0-0	2-2	2	1	3	2	3	10	0	1	1	0	1	-9
2	Rokia Doumbia	G 24:28	2-7	0-2	0-0	4	3	7	3	0	4	3	2	1	1	2	-7
5	Cassidy Hardin	G 28:43	2-8	1-5	0-0	0	1	1	3	2	5	0	1	0	0	1	-7
10	Jeanae Terry	G 34:00	2-8	0-2	1-1	0	8	8	4	2	5	2	4	2	0	0	-8
23	Abbey Ellis	G 28:14	4-7	0-0	5-7	1	2	3	1	5	13	2	2	1	0	0	-15
0	Brooke Moore	32:29	8-22	3-6	1-2	0	2	2	3	1	20	1	2	0	1	2	-15
14	Ava Learn	12:19	1-2	0-0	0-0	3	0	3	3	0	2	0	0	0	0	0	-8
3	Jayla Smith	14:18	1-3	0-0	1-2	0	0	0	0	1	3	0	0	0	0	0	-6
Team						2	3	5			0			0			
Totals			24-64	4-15	10-14	12	20	32	19	14	62	8	12	5	2	6	-15

Technical Fouls::NONE

Shooting By Period		
1 st	FG%	8-18 44.4%
	3PT%	1-5 20.0%
	FT%	1-1 100%
2 nd	FG%	6-14 42.9%
	3PT%	1-2 50.0%
	FT%	4-6 66.7%
3 rd	FG%	5-14 35.7%
	3PT%	0-4 0.0%
	FT%	3-4 75%
4 th	FG%	5-18 27.8%
	3PT%	2-4 50.0%
	FT%	2-3 66.7%
GM	FG%	24-64 37.5%
	3PT%	4-15 26.7%
	FT%	10-14 71.4%

Dead Ball Rebounds: 4, 2

Marquette - 77

Record: 23-10

NO. Name		Min	FG	3P	FT	Rebounds			Fouls		TP	AS	TO	ST	Blocks		+/-
			M-A	M-A	M-A	OR	DR	TOT	PF	FD					BS	BA	
32	Liza Karlen	F 23:49	0-4	0-1	2-2	0	2	2	2	2	2	2	1	1	0	0	6
42	Lauren Van Kleunen	F 37:27	10-17	0-0	7-10	4	7	11	2	5	27	6	0	0	2	1	17
52	Chloe Marotta	F 36:21	1-2	0-0	1-2	2	7	9	2	3	3	6	0	1	0	0	22
12	Karissa McLaughlin	G 38:17	5-15	3-8	3-4	0	2	2	0	6	16	0	1	0	0	0	14
23	Jordan King	G 32:10	7-17	3-4	0-0	5	4	9	3	1	17	4	4	1	3	0	18
4	Antwainette Walker	21:02	4-7	0-0	2-4	2	2	4	4	2	10	2	2	2	1	1	12
44	Kennedi Myles	02:11	0-0	0-0	0-0	0	1	1	0	0	0	0	0	0	0	0	-6
3	Rose Nkumu	08:43	1-1	0-0	0-0	0	1	1	1	0	2	0	1	1	0	0	-8
Team						2	2	4			0			1			
Totals			28-63	6-13	15-22	15	28	43	14	19	77	20	10	6	6	2	15

Technical Fouls::NONE

Shooting By Period		
1 st	FG%	9-16 56.3%
	3PT%	1-2 50.0%
	FT%	5-6 83.3%
2 nd	FG%	6-17 35.3%
	3PT%	2-3 66.7%
	FT%	2-2 100%
3 rd	FG%	7-17 41.2%
	3PT%	1-3 33.3%
	FT%	1-4 25%
4 th	FG%	6-13 46.2%
	3PT%	2-5 40.0%
	FT%	7-10 70%
GM	FG%	28-63 44.4%
	3PT%	6-13 46.2%
	FT%	15-22 68.2%

Dead Ball Rebounds: 5, 0

	PUR	MU	Points from		PUR	MU	Period by Period Scoring					
Biggest lead	2 (1 st 2:50)	18 (4 th 0:57)	Turnovers		6	12		1st	2nd	3rd	4th	TOT
Best Scoring Run	5 (1 st 2:50)	9 (4 th 0:57)	Paint		30	24	PUR	18	17	13	14	62
Lead Changes	2		Second Chance		17	25	MU	24	16	16	21	77
Times Tied	5		Fast Breaks		0	8						
Time with Lead	00:20	37:27	Bench		25	12						

2022-23 PURDUE WOMEN'S BASKETBALL GAME NOTES



PURDUE BOILERMAKERS

Overall - 17-15 | B1G - 7-11 | Streak - L1 | AP - - | Coaches - - | NET - 80 | Home - 11-6 | Away - 5-7 | Neutral - 1-2 | Post - 1-2

Offense - 69.2 | Defense - 67.3 | Scoring Margin - +1.8 | Field Goal% - .422 | Field Goal% Defense - .415 | 3-Pt.%(PG) - .324 (7.5)

Opp 3-Pt.%(PG) - .276(4.8) | Rebounding - 35.8 | Rebound Margin - -0.7 | Assists - 15.8 | Turnovers - 15.1 | Turnover Margin - -0.3

SERIES HISTORY

Overall
At Home
On the Road
Neutral Site
Streak
Under Gearlds

2022-23 SCHEDULE

Opponent	Date/Result
Purdue NW	N6
Marshall	N10
Murray State	N13
SIUE	N17
Indiana State	N20
vs. Harvard (I)	N24
vs. Florida State (I)	N25
vs. Oklahoma State (I)	N26
Syracuse (2)	N30
at Michigan State*	D5
Maryland*	D8
Illinois State	D11
vs. Campbell (3)	D20
Texas A&M (3)	D21
at Iowa*	D29
Wisconsin*	J1
at Penn State*	J7
Michigan*	J10
at Northwestern*	J14
Nebraska*	J18
Minnesota*	J21
at Illinois*	J26
at Ohio State	J29
Indiana	F5
at Rutgers	F9
Northwestern	F12
Michigan State	F15
at Indiana	F19
Penn State	F22
at Minnesota	F26
Big Ten Tournament (4)	M1-5
1 - Cancun Challenge (Mexico)	
2 - Big Ten/ACC Challenge	
3 - Las Vegas Holiday Classic	
4 - B1G Tournament (Minneapolis)	

HEAD COACH KATIE GEARLDS

Purdue Record - 17-15 (1st)
Career Record - 245-65 (9th)
Alma Mater - Purdue '07
Highlights - 2x NAIA National Champ, 3x NAIA Coach of the Year, 8 years at Marian, 7th Overall to Seattle in 2007 Draft, Legend of Mackey, 2007 All-America

COACHING STAFF

Asso. Head Coach Beth Couture
Assistant Coach Michael Scruggs
Assistant Coach Alex Guyton

PRONUNCIATIONS

2 - Holzer - ah-NOAH
14 - Learn - AA-va
11 - Petree - LAY-sha pee-TREE
4 - Rudini - rue-DEE-nee
10 - Terry - Jah-NAY
31 - Stoddard - STAH-dard
AHC - Couture - COO-chur
HC - Gearlds - Gerald's (soft-g)
DoV - Hasser-Smith - LAKE-en

2 • Ainhua Holzer • Fr. • G • 5-9 • Martigny, Switzerland

GP/GS	MIN.	PPG	RPG	APG	STLS	BLKS	FG%	3P%	FT%
/									

LAST GAME:

• Will miss the season due to injury
• Played several seasons in the Swiss Basketball League
• Represented Switzerland at several youth levels
• 2022 SBL Young & Most Improved Player

Career Highs:

P - -
R - -
A - -
M - -

3 • Jayla Smith • So. • G • 6-0 • Indianapolis, Ind. • Lawrence North

GP/GS	MIN.	PPG	RPG	APG	STLS	BLKS	FG%	3P%	FT%
30/1	15.8	4.7	1.7	0.7	22	11	38.6	29.1	61.5

LAST GAME:

• Appeared in 30 games, averaging 4.7 points per game as a freshman
• Purdue's 10th Indiana Miss Basketball

Career Highs:

P - 16 at Nebraska - 1/30/22
R - 7 2 times
A - 2 7 times
M - 27 at WKU - 11/10/21

4 • Kate Rudini • Fr. • G • 5-9 • Trumbull, Conn. • Saint Joseph

GP/GS	MIN.	PPG	RPG	APG	STLS	BLKS	FG%	3P%	FT%
/									

LAST GAME:

• Joined the program as a walk-on prior to the season
• Connecticut All-State as a senior

Career Highs:

P - -
R - -
A - -
M - -

5 • Cassidy Hardin • 5th • G • 5-10 • Center Grove, Ind. • Center Grove

GP/GS	MIN.	PPG	RPG	APG	STLS	BLKS	FG%	3P%	FT%
32/31	31.0	8.7	2.5	1.6	23	7	35.4	33.5	75.0

LAST GAME:

• Deferred medical school start to return
• One of three players in Purdue history to play in five seasons
• 154 of 177 made shots have been threes

Career Highs:

P - 25 Denver - 12/12/21
R - 8 Minnesota - 1/27/22
A - 5 3 times
M - 43 Indiana - 1/16/22

10 • Jeanae Terry • Sr. • G • 5-11 • Detroit, Mich. • Wayne Memorial • Illinois

GP/GS	MIN.	PPG	RPG	APG	STLS	BLKS	FG%	3P%	FT%
32/32	29.6	7.2	7.0	5.7	41	14	40.9	14.3	68.9

LAST GAME:

• All-Big Ten honorable mention
• Only player in Purdue history (men's & women's) to record multiple triple-doubles
• Second Boilermakers to record over 150 assists and 200 rebounds in a season

Career Highs:

P - 28 at Wisconsin - 1/31/21
R - 17 2 times
A - 12 2 times
M - 38 2 times

11 • Lasha Petree • 5th • G • 6-0 • Detroit, Mich. • Arbor Prep • Bradley • Rutgers

GP/GS	MIN.	PPG	RPG	APG	STLS	BLKS	FG%	3P%	FT%
/									

LAST GAME:

• Joined Purdue in spring of 2022
• Played three years at Bradley and one at Rutgers
• Scored over 1,600 career points, ranks in the top 75 of active players

Career Highs:

P - 36 Indiana State - 1/5/20
R - 12 at Evansville - 1/11/19
A - 6 at Drake - 2/20/20
M - 40 4 times

14 • Ava Learn • So. • G/F • 6-1 • Hyde Park, N.Y. • Our Lady of Lourdes

GP/GS	MIN.	PPG	RPG	APG	STLS	BLKS	FG%	3P%	FT%
22/0	12.3	4.8	2.7	0.3	8	13	61.3	0.0	72.2

LAST GAME:

• Came off the bench in 22 games as a freshman
• Four-time Poughkeepsie Journal All-Star

Career Highs:

P - 13 at Rutgers - 2/20/22
R - 3 at Northwestern - 2/24/22
A - 1 4 times
M - 23 2 times

23 • Abbey Ellis • Sr. • G • 5-6 • Melbourne, Australia • Our Lady of Mercy • Cal Poly

GP/GS	MIN.	PPG	RPG	APG	STLS	BLKS	FG%	3P%	FT%
32/31	29.0	11.5	3.2	3.0	35	7	46.5	33.3	85.4

LAST GAME:

• All-Big Ten honorable mention
• 85.4% free throw clip was 10th best in single-season history last year
• First Australian in program history

Career Highs:

P - 39 at San Diego St. - 12/21/20
R - 10 Long Beach State - 3/10/21
A - 11 Western Michigan - 11/14/21
M - 44 Indiana - 1/16/22

30 • Addison Potts • Fr. • G • 6-0 • Fort Myers, Fla. • South Fort Myers

GP/GS	MIN.	PPG	RPG	APG	STLS	BLKS	FG%	3P%	FT%
/									

LAST GAME:

• 2022 Prep Hoops Florida Miss Basketball
• 3-time First Team News-Press SWFL
• Played varsity basketball starting in seventh grade, scored 2,098 points

Career Highs:

P - -
R - -
A - -
M - -

31 • Lilly Stoddard • Fr. • F • 6-4 • Crown Point, Ind. • Crown Point

GP/GS	MIN.	PPG	RPG	APG	STLS	BLKS	FG%	3P%	FT%
/									

LAST GAME:

• No. 87 player in the nation by ESPNW
• Won 2021 IHSAA 4A State Championship
• Finished with a 103-7 career record in high school

Career Highs:

P - -
R - -
A - -
M - -

33 • Madison Layden • Jr. • G • 6-1 • Kokomo, Ind. • Northwestern

GP/GS	MIN.	PPG	RPG	APG	STLS	BLKS	FG%	3P%	FT%
29/28	34.0	11.6	4.6	2.8	49	15	34.7	33.2	85.1

LAST GAME:

• Big Ten All-Freshman & honorable mention
• One of six players with 45 3s, 65 assists and 45 steals in each of the last two years
• First in IHSAA history to lead three Final Fours in scoring

Career Highs:

P - 20 2 times
R - 18 3 times
A - 7 Michigan State - 1/3/21
M - 44 Indiana - 1/16/22

34 • Caitlyn Harper • R-Sr. • F • 6-2 • Hartland, Wisc. • Arrowhead • Cal Baptist

GP/GS	MIN.	PPG	RPG	APG	STLS	BLKS	FG%	3P%	FT%
/									

LAST GAME:

• Arrived at Purdue with two years eligibility
• 2022 WAC Player of the Year and CoSIDA All-American
• Led the WAC in scoring with 177 points

Career Highs:

P - 30 at Utah Valley - 1/15/22
R - 14 3 times
A - 5 at UTRGV - 2/13/21
M - 41 at Chicago State - 3/2/22

35 • Rickie Woltman • Sr. • F • 6-4 • St. Louis, Mo. • Incarnate Word

GP/GS	MIN.	PPG	RPG	APG	STLS	BLKS	FG%	3P%	FT%
32/22	20.3	7.0	5.2	0.4	10	34	53.9	0.0	61.5

LAST GAME:

• Played 20.3 minutes per game last year, following just 4.9 in her first two seasons
• No. 25 by ESPNW and No. 919 by USA Today

Career Highs:

P - 18 Penn State - 2/9/22
R - 11 2 times
A - 3 at Rutgers - 2/20/22
M - 33 West Virginia - 11/25/21