

# PURDUE

## WOMEN'S BASKETBALL

1999 NCAA CHAMPIONS /// 3 FINAL FOURS /// 27 NCAA TOURNAMENT APPEARANCES /// 9 BIG TEN TOURNAMENT TITLES /// 7 BIG TEN REGULAR SEASON TITLES

### 2023-24 PURDUE BOILERMAKERS

	2023-24	Streak	Under Gearlds
Overall:	11-15	L2	47-41
Big Ten opponents (RS):	4-11	L2	20-30
Non-Conference (RS):	7-4	W1	25-7
Home:	9-5	L2	30-15
Away:	2-8	W1	13-19
Neutral:	0-2	L4	4-7
Post (BIG, NCAA, WNIT):	-	L2	2-4

### TALE OF THE TAPE

PURDUE		WISCONSIN
67.9	Points	62.7
-1.5	Margin	-4.0
69.4	Defense	66.7
.417 / .425	Field Goal % / Defense	.401 / .394
.331 / 6.3	3-Pt % / Per Game	.278 / 5.8
.353 / 6.7	3-Pt% Defense / Per Game	.339 / 7.4
.781 / 12.5	Free Throw % / Per Game	.729 / 12.3
34.7 / -0.9	Reb. Per Game / Margin	37.3 / 0.7
15.5 / 15.2	Assists / Turnovers	14.1 / 18.6
7.3	Steals	7.5
3.0	Blocks	4.4

### 2023-24 SCHEDULE

Date	P/O Rank	Opponent	Time	TV/Result
------	----------	----------	------	-----------

#### October

29	-/-	Quincy (ex)	2 PM	W, 106-45
----	-----	-------------	------	-----------

#### November

6	-/4	at UCLA	8:30 PM	L, 92-49
12	-/-	Southern	4 PM	W, 67-50
16	-/RV	Texas A&M	7 PM	W, 72-58
20	-/-	vs. Florida\$	4 PM	L, 52-49
22	-/-	vs. Georgia\$	4 PM	L, 65-57
26	-/-	Southern Indiana	2 PM	W, 95-57

#### December

1	-/-	at Dayton	7 PM	W, 67-59
3	-/-	Valparaiso	2 PM	W, 83-56
6	-/-	SEMO	7 PM	W, 83-57
10	-/-	at Minnesota	2 PM	L, 60-58
17	-/14	at Notre Dame	Noon	L, 76-39
20	-/-	Indiana State	11 AM	W, 79-63
30	-/-	Wisconsin	6 PM	W, 89-50

#### January

2	-/-	Rutgers	7 PM	W, 77-76
6	-/-	at Maryland	4:30 PM	Postponed
10	-/3	Iowa	8 PM	L, 96-71
14	-/-	at Maryland	Noon	L, 88-66
18	-/-	at Penn State	7 PM	L, 80-67
21	-/16	Indiana	2 PM	L, 74-68
24	-/-	at Michigan State	6:30 PM	L, 97-70
28	-/12	Ohio State	2 PM	L, 71-68
31	-/-	at Nebraska	8 PM	L, 68-54

#### February

5	-/-	Illinois	8 PM	W, 77-72
11	-/14	at Indiana	2 PM	L, 95-62
14	-/-	at Northwestern	8 PM	W, 74-48
17	-/-	Nebraska	4 PM	L, 77-65
21	-/-	Michigan State	7 PM	L, 68-59
25	-/-	at Wisconsin	4 PM	BTN
28	-/-	Penn State	7 PM	BIG+

#### March

3/3	-/-	at Michigan	7 PM	FS1
3/6-10		Big Ten Tournament		

\* Indicates Big Ten Conference game All times subject to change  
~ Baha Mar Pink Rankings are from the AP Top 25  
Flamingo Championship  
@ Big Ten Tournament

### THE MATCHUP

GAME 27 - PURDUE BOILERMAKERS AT WISCONSIN BADGERS  
Sunday, Feb. 25, 2024 | 4 PM | Madison, Wisc. | Kohl Center (17,287)

PURDUE BOILERMAKERS		WISCONSIN BADGERS
11-15, 4-11 BIG		13-12, 6-9 BIG
Head Coach: Katie Gearlds (Purdue, 2007)	RADIO   95.3 BOB FM Tim Newton - PxP	TV/STREAM   BTN Connor Onion - PXP Shimmy Gray-Miller - Analyst
Record at Purdue (3rd): 47-41		Head Coach: Marisa Moseley (Boston, 2004)
Career Record (11th): 275-91		Record at Wisconsin (3rd): 32-53
Ranking (NET/AP/Coach): 77 / - / -		Career Record (6th): 77-82
Streak: L2 Last 5: 2-3 Last 10: 2-8	LIVE STATS PurdueStats.com	Ranking (NET/AP/Coach): 110 / - / -
Last Game: 68-59, Loss, vs. Michigan State	WEBSITE PurdueSports.com	Streak: W2 Last 5: 3-2 Last 10: 5-5
		Last Game: 67-56, Win, at Minnesota

### THE OPENING TIP TEAM CHART ON LAST PAGE

- The Purdue women's basketball team heads back out on the road for the penultimate time in the regular season for a trip to Wisconsin on Sunday at 4 p.m. on the Big Ten Network.
- Mary Ashley Stevenson enters Sunday as one of the top freshmen in the Big Ten, ranking second in rookie rebounding and third in scoring for all games. She is second in both categories in Big Ten play.
- The New York native is second in the Big Ten with a 90.9% free throw clip in league play. Her 81.7% clip for the season ranks 10th nationally among qualifying freshmen.
- Stevenson needs 22 rebounds to become the fifth freshman in Purdue history to record 250 points and 150 rebounds.
- Jeanae Terry is one of three players from the Big Ten and one of eight nationally to post over five points, rebounds and assists, plus one steal, per game.
- Terry is on pace to become the first player in Purdue history to average over six points, rebounds and assists in a career.
- The Detroit native is second in the Big Ten with 33 steals during league play, including 10 in the last three games.
- Terry is now 13 points away from reaching 1,000 in her career.
- Purdue freshman class leads all Big Ten rookie groups with 22.8 points per game, up to 23.1 points per league contest.
- Sophie Swanson notched career highs with 19 points with five 3-pointers in 24 minutes of action against Michigan State. It was the most made 3-pointers since Madison Layden hit five against Iowa in the 2021 Big Ten Tournament.
- Despite missing the first five games of the season, Swanson is fifth among Big Ten freshman with 26 made triples.
- Madison Layden is now 16 points shy of reaching the 1,000-point club as its 37th member. Layden is also two 3-pointers shy of becoming the sixth player in Purdue history to record 200 triples in a career.
- The Boilermaker freshmen have combined for 24 double-digit scoring performances this season, ranking second in the Big Ten behind Nebraska's 27.
- Purdue has moved up to 14th in the nation and second in the Big Ten with a 78.1% free throw mark, which is currently the highest clip in program history.
- Purdue's point production has come from its seniors and freshmen combining for 91.7% of all points this season.

### SERIES HISTORY

Overall	57-22	Purdue's 39-point win in December was its largest against Wisconsin since a 48-point (93-45) win on March 6, 1994, as well as the biggest against a Big Ten opponent since beating Nebraska by 43 points (88-45) in 2017.
At Home	32-6	
On the Road	18-15	
Neutral Site	7-1	Five of the last seven meetings have been decided by three or fewer points.
Streak	Purdue - 3	Gearlds set the Purdue record with 41 points at the Kohl Center on Feb. 18, 2007.
Under Gearlds	3-2	
Gearlds vs. Moseley	3-2	
Purdue vs. Moseley	3-2	
First Meeting	12/3/1976, Home, Win, 53-40	
Last Purdue Win	12/30/23, Home, 89-50	
Last Purdue Loss	2/27/22, Home, 63-62	

<b>A WIN WOULD...</b>
• <b>Be better than a loss</b>
• Mark the Boilermakers' third win away from Mackey Arena this season.
• Be Purdue's first win in Madison since the 2019-20 season.
• Give the Boilermakers its first season sweep of the year.

### NUMBERS TO KNOW

<b>19</b>	<b>13</b>	<b>2</b>
Purdue is the only school in the country to have three different freshman score 19 or more points in a game this season.	Mary Ashley Stevenson is one of 13 major conference freshmen to average 10 points and 4.5 rebounds this season.	Jeanae Terry and Caitlin Clark are the only players to rank in the top 10 of the Big Ten in rebounding, assists and steals.

### THE ROSTER

No.	Name	GP/GS	MPG	PPG	RPG	APG	Boiler Notes
1	Amiyah Reynolds						Out for the year due to high school injury, running the scout team
2	Rashunda Jones	22/0	18.3	7.7	2.4	1.7	2nd in scoring among Big Ten players with no starts
3	Jayla Smith	25/1	13.0	3.6	1.4	0.7	8 points vs. Iowa, most since season-high 13 vs. Florida
10	Jeanae Terry	26/26	29.8	5.0	7.4	6.2	Third all-time in career assists (535)
11	McKenna Layden	22/0	10.3	1.4	1.2	0.7	Indiana All-Star as a junior and senior, playing with sister Madison
15	Mila Reynolds	19/0	7.3	2.1	0.8	0.2	Set career high with seven points at Nebraska
20	Mary Ashley Stevenson	26/25	27.4	10.1	4.9	0.8	Most 7 point, 7 rebound games by Big Ten freshman with nine
21	Emily Monson	15/0	4.5	0.8	0.6	0.5	Naismith High School All-America honorable mention
23	Abbey Ellis	26/26	30.1	13.5	3.6	2.0	Double figures in 22 games, reached 1,000 Purdue points vs. NU
31	Sophie Swanson	19/0	9.8	6.3	1.2	0.4	5 triples vs. Michigan State, most by Purdue freshman since 20-21
32	Alaina Harper	21/0	5.2	0.8	0.9	0.0	On the same team with Caitlyn for the first time ever
33	Madison Layden	26/26	30.0	10.3	3.3	1.8	16 points from 1,000 and 2 3-pointers of 200 for career
34	Caitlyn Harper	26/26	27.7	10.7	3.9	1.2	Played over 30 minutes in 11 games, most in her career



**PURDUE QUICK FACTS****UNIVERSITY INFO**

Location: West Lafayette, Ind. Founded: 1869  
 Conference: Big Ten Enrollment: 52,211  
 Colors: Old Gold & Black Nickname: Boilermakers  
 President: Dr. Mung Chiang Athletics Director: Mike Bobinski  
 Deputy A.D. / Senior Woman Administrator: Tiffini Grimes

**COMMUNICATIONS CONTACT**

Ian MacDougall - Associate Director (WBB Contact)  
 Email - imacdoug@purdue.edu | Cell - 317.313.7486 | Office - 765.494.0529

**PROGRAM HISTORY**

First Season - 1975-76 (49th Season)  
 All-Time Record - 934-551 All-Time Big Ten Record - 433-280  
 Home Record - 500-181 Home Big Ten Record - 248-110  
 Away Record - 292-281 Away Big Ten Record - 185-170  
 Neutral Site Record - 142-89

**POSTSEASON HISTORY**

NCAA Championships - 1999 (Only one by a Big Ten program)  
 Final Fours - 3 (1994-99-2001)  
 Sweet 16 - 12 (1990-92-94-95-98-99-01-03-04-06-07-09)  
 NCAA Appearances - 27 (1989-90-91-92-94-95-96-97-98-99-00-01-02-03-04-05-06-07-08-09-11-12-13-14-16-17-23)  
 All-Time NCAA Tournament Record - 47-26  
 WNIT/WNIT Appearances - 4 (1988-10-18-22)  
 Big Ten Regular Season Titles - 7 (1991-94-95-97-99-01-02)  
 Big Ten Tournament Titles - 9 (1988-99-00-03-04-07-08-12-13)

**THE LAST TIME OUT****PURDUE 59, MICHIGAN STATE 68**

Trailing by as many as 19 points, the Purdue women's basketball team closed the gap all the way down to four with two minutes to play, but the deficit proved too much to overcome in a 68-59 loss to Michigan State on Wednesday night in Mackey Arena.

- Abbey Ellis posted her fourth 20-point outing of the season with a game-high 22 points. The fifth-year senior was 8-of-19 from the floor and 5-of-5 at the line to go with four rebounds.
- Sophie Swanson had a career night behind the arc. The freshman dropped 19 points with five triples and two assists in 24 minutes of action, all career highs.
- The Boilermakers finished with a 36.1% clip from the field and eight made 3-pointers with five coming in the second half.
- Purdue won the battle on the glass 37-36, as Jeanae Terry matched her season high with 15 rebounds.
- On the defensive end, Purdue held Michigan State 17 points below their season scoring average.
- After trailing by 14 at the break, the Boilermakers outscored Michigan State 38-33 in the second half.

**THIRD YEAR OF THE KG ERA**

- Head coach Katie Gearlds is in her third season at Purdue after guiding the Boilermakers to back-to-back postseason bids, including the first NCAA Tournament appearance since 2017.
- In two short seasons, Gearlds has transformed Purdue back into an NCAA Tournament squad with eyes on taking the Boilermakers back to the same national spotlight from when she was on the floor 20 years ago.
- Gearlds took over the program 47 days before her first campaign in 2021-22 when Purdue was coming off a seven-win season. She guided Purdue to a 17-15 mark and reached the WNIT after the program failed to reach the postseason in the previous three years.
- Purdue finished the 2022-23 season with a 19-11 record and its first return to the NCAA Tournament since 2017.
- Gearlds joined Boilermaker legends Carolyn Peck and Lin Dunn as the only Purdue head coaches to post win improvements in each of their first two seasons.
- When Gearlds moved into the head coach role, Purdue had lost 19 straight games to ranked opponents. Over her first two years, Gearlds has racked up three ranked wins, including the program's first true road AP top-5 victory against No. 2 Ohio State in 2022-23.
- Gearlds was initially hired as the associate head coach to later become the head coach at the start of the 2022-23 season.

**BOILER NOTES****BOILERMAKER BASKETBALL**

- Purdue Women's Basketball is in its 49th season in 2023-24.
- Purdue was the 40th program in NCAA Division I history to reach 900 wins.
- The Boilermakers are the only team from the Big Ten to win a national championship, hoisting the title in 1999.
- The program has reached the NCAA Tournament 27 times with 12 Sweet 16s, eight Elite 8s, three final fours and a trio of national championship game appearances.
- In addition to its NCAA success, Purdue owns the Big Ten record for most tournament titles with nine.

**WAIT, HOW MANY SISTERS ARE ON THIS TEAM?**

- If a team is a family, Purdue is taking that to a whole new level with three sets of siblings on the 2023-24 roster - Madison & McKenna Layden, Mila & Amiyah Reynolds, Caitlyn & Alaina Harper.
- The Boilermakers are the only team in the nation with three sets of sisters. Utah Tech is the only other program with more than one pair of siblings.
- Based on the research of a communications intern, 39 teams across Division I have one pair of sisters of the roster this year.
- McKenna and Madison Layden became the first Boilermakers to play on the floor together in program history, playing 6:29 together in the season opener at UCLA.
- Alaina Harper and Caitlyn Harper were the second set of siblings to play in the same game at Purdue, when Alaina checked in for her big sister in the fourth quarter against UCLA.

**FRESHMAN OUTPUT**

- With six freshmen on the roster, five active, the rookie class for the Boilermakers have made an impact in West Lafayette.
- The six-player class was Gearlds' primary focus during her first years back at Purdue.
- Purdue has had two freshmen in double figures in eight games this season, the most in the Big Ten.
- The freshman class has combined to score over 40 points twice this season, which is the most of any Big Ten freshman class.
- Purdue's freshmen lead the Big Ten with 22.8 points per game and lead in points per league game with 23.1.
- The freshmen Boilers have 25 double-digit scoring outings, second most in the Big Ten to Nebraska's 27.
- Mary Ashley Stevenson joined the starting lineup in the second game of the season. She has finished in double figures 13 times and posted one double-double.
- Rashunda Jones has scored 20 points or more three times this season, a first by a Purdue freshman since 2016-17, while touching double digits in eight outings.
- After missing the first five games of the year, Sophie Swanson has become one Purdue's top 3-point shooters with 6.3 points per game and third on the squad with 26 made triples.
- McKenna Layden and Emily Monson have provided valuable minutes off the bench as their games continue to grow.

**SCORING BY BIG TEN FRESHMAN CLASS (Per HerHoopStats.com)**

School	PPG	BIG PPG	School	PPG	BIG PPG
Purdue	22.8	23.1	Penn State	6.8	5.5
Nebraska	21.2	20.0	Illinois	5.6	5.8
Minnesota	18.7	15.8	Indiana	5.0	3.7
Rutgers	13.8	13.7	Michigan	2.8	2.1
Wisconsin	11.4	9.1	Michigan State	2.4	0.0
Maryland	7.6	4.3	Ohio State	2.3	1.6
Northwestern	6.9	6.0	Iowa	0.3	0.4

**PURDUE FRESHMAN BESTS THIS YEAR**

Stat	Combined	Leader
Points	47, vs. Valparaiso	25, Stevenson vs. Illinois
3-Pointers	5, 2 times	5, Swanson vs. Michigan State
Rebounds	20, vs. Valparaiso	11, at Stevenson at Minnesota
Assists	9, vs. Valparaiso	5, Jones at Indiana
Steals	4, 2 times	2, 4 times
Blocks	2, 2 times	2, Stevenson, vs. Valparaiso
Minutes	96, vs. Southern Ind.	36, Stevenson at Minnesota

**STEVENSON & SPIDER**

- Mary Ashley Stevenson and Rashunda Jones have been instant impacts for the Boilermakers as freshmen.
- The duo have accounted for 21 of Purdue's 24 double-figure performances by freshmen this season, while combining to average 16.6 points per game.
- They are the first Purdue tandem to win Big Ten Freshman of the Week since the 2016-17 season.
- Stevenson is second in Big Ten freshman scoring, while Jones sits fourth. In conference play, Stevenson is second in the league with Jones in fifth place.

**BIG FRESHMEN AVERAGING 8 PPG, 3 RPG**

Player	School	PPG	RPG
Natalie Potts	Nebraska	10.3	5.3
Mary Ashley Stevenson	Purdue	10.1	4.9
Grace Grocholski	Minnesota	11.5	4.2

**THE NAME IS MARY ASHLEY STEVENSON**

- Mary Ashley Stevenson has been one of the top rookies in the Big Ten this season, averaging 10.1 points and 4.9 rebounds per game. In league play, she's averaging 10.8 points and 4.7 rebounds.
- She second on the team in rebounding and is fourth in scoring.
- Her 81.7% free throw mark is 10th among freshmen nationally and first in the Big Ten, while her 90.9% clip in league play ranks second overall for the conference.
- Stevenson has the most games among Big Ten freshmen this year with at least seven points and seven rebounds with nine.
- The New Yorker dropped a career-high 25 points against Illinois. It was the most points by a Purdue freshman since Courtney Moses in the 2010-11 season. Stevenson went 9-of-9 at the line, which were the most made free throws in a perfect night by a Boilermaker rookie since KK Houser in the 2009-10 campaign.
- Stevenson was the first player in Purdue history to be named the USBWA Tamika Catchings National Freshman of the Week.
- She has been tabbed Big Ten Freshman of the Week twice.
- In her college debut at UCLA, she was the first Purdue rookie since Sam Ostarello in 2009 to record at least five points and one block, rebound, assist and steal in an opener.
- Her double-double vs. Valpo was the first points-rebounds by a Purdue rookie since Sam Ostarello in 2009.
- Before the summer, she legally changed her last name from Groot to Stevenson, taking the name of her stepdad Gary.

**PURDUE FRESHMEN WITH 250 POINTS, 125 REBOUNDS**

Name	Year	Games	Points	Rebounds
Cathey Tyree	1983-84	28	268	203
Delys Brooks	1980-81	27	275	201
Ae'Rianna Harris	2016-17	36	258	187
Shereka Wright	2000-01	38	377	177
Lindsay Wisdom-Hylton	2004-05	30	261	146
Sue Fackler	1977-78	18	268	143
Katie Douglas	1997-98	33	285	141
Stephanie White	1995-96	31	336	134
MaChelle Joseph	1988-89	30	567	133
Mary Ashley Stevenson	2023-24	26	263	128
Lisa Jahner	1984-85	28	279	127

**FRESHMAN DOUBLE FIGURE SCORING GAMES SINCE 1993-94**

Leslie Johnson	32, 1993-94	Brittany Rayburn	16, 2008-09
Dominique Oden	23, 2016-17	FahKara Malone	16, 2006-07
Katie Gearlds	20, 2003-04	Stephanie White	15, 1995-96
Shereka Wright	20, 2000-01	Jannon Roland	15, 1993-94
Karissa McLaughlin	19, 2017-18	Katie Douglas	13, 1997-98
Courtney Moses	18, 2010-11	Mary Ashley Stevenson	13, 2023-24
Shalicia Hurns	18, 2000-01		

**THE MASK**

- Stevenson will wear a mask for the remainder of the season after suffering a broken nose against Ohio State.
- She missed 15 minutes of play against the Buckeyes before returning in the second half to nearly post a double-double.
- She received a custom mask that was shipped in time to face Nebraska with a Purdue's "Motion P" logo and the number 20.
- The morning after a career-high 25 points against Illinois, she went in for surgery and returned to practice 48 hours later.

**STEVENSON POST-MASK STATS (starting vs. Nebraska - Jan. 31)**

GP	MPG	PPG	RPG	FG%	FTM-FTA	FT%
6	28.0	12.5	3.5	.549	18-19	.947





**BOILER NOTES****BIG TEN FRESHMAN RANKINGS**

- Purdue's freshman class has ranked among the top of the Big Ten's rookie class in several categories this season.

Points Per All Games	School	PPG
Grace Grocholski	Minnesota	11.5
Natalie Potts	Nebraska	10.3
Mary Ashley Stevenson	Purdue	10.1
Rashunda Jones	Purdue	7.7
D'Yanis Jimenez	Wisconsin	7.6

Points Per BIG Game	School	PPG
Grace Grocholski	Minnesota	11.6
Mary Ashley Stevenson	Purdue	10.8
Natalie Potts	Nebraska	9.9
Lisa Thompson	Rutgers	7.5
Logan Nissley	Nebraska	6.4

Rebounds Per All Games	School	RPG
Natalie Potts	Nebraska	5.3
Mary Ashley Stevenson	Purdue	4.9
Grace Grocholski	Minnesota	4.2

Rebounds Per BIG Games	School	RPG
Natalie Potts	Nebraska	5.1
Mary Ashley Stevenson	Purdue	4.7
Grace Grocholski	Minnesota	3.6

Double Figure Games	School	Total
Grace Grocholski	Minnesota	16
Natalie Potts	Nebraska	16
Mary Ashley Stevenson	Purdue	13
Logan Nissley	Nebraska	9

**FRESHMAN RECOGNITION**

- Purdue has earned three Big Ten Freshman of the Week honors this season with Stevenson claiming two and Jones one.
- Jones was tabbed Big Ten Freshman of the Week, Purdue's first since 2017-18, when she scored 20 points against Texas A&M.
- Stevenson earned her first Big Ten Freshman of the Week after averaging 12 points and eight rebounds in wins over Wisconsin and Indiana State.
- Stevenson got her second nod from the league office after scoring 20.5 points and 5.0 rebounds with a 63% shooting clip against Indiana and Illinois.
- Stevenson was also tabbed the USBWA Tamika Catchings National Freshman of the Week after those performances.

**JEANAE JOINING THE CLUBS**

- In less than three years, Jeanae Terry has cemented herself as one of the top all-around producing guards in Purdue history.
- Terry ranks third in Purdue history with 535 assists, trailing Stephanie White (578) and MaChelle Joseph (628).
- She is the seventh player in Purdue history to reach 500 assists.
- Terry is the 10th player in Big Ten history to join the 700-assist club, including her time at Illinois.
- The Detroit native is the second Big Ten player ever to join the 900-rebound, 700-assist and 200-steal club, matching Iowa's Samantha Logic (2012-15).
- She joined Purdue legends Stephanie White and Katie Douglas as the only Boilermakers to record 500 assists and 600 rebounds.
- She is on pace to become the first Boilermaker to lead the team in rebounds and assists over three seasons.
- Already the only Boiler to do it twice Terry is on pace to be the first player in Purdue history to post three seasons with over 150 assists and 200 rebounds.

**HARPER HITTING HER STRIDE**

- In her sixth year of college basketball, Caitlyn Harper might be in the best shape of her career playing over 30 minutes in 11 games. She bested 30 minutes just thrice last year.
- Harper scored in double figures in 17 outings, sitting second on the team with 10.7 points per game at a 53.6% shooting clip.
- Harper is second on the team in Big Ten action with 11.7 points per game while shooting 54.2% from the field.
- She is one of 15 players from the Big Ten averaging double figures and shooting over 50% from the field.
- Harper joined the 1,800-point club at Michigan State, made her 100th career triple at home against Indiana this year and started her 100th career game at Nebraska.

**NUMBERS TO KNOW IN THE GEARLDS ERA**

- Purdue is 40-7 when leading after the first quarter and 45-7 when taking a lead into the fourth quarter.
- Purdue is 30-19 when knocking down seven or more 3-pointers.
- Purdue is 18-13 when shooting 35% from distance or better and 39-15 when shooting 40% or better overall, including 15-1 with a field goal clip above 50%.
- The Boilermakers are 32-8 when outrebounding opponents.
- The Boilermakers hold a 33-7 record when scoring 70 or more points, while also posting a 41-12 mark when holding opponents below that mark.

**MILESTONE WATCH**

- Madison Layden needs 16 points to join the 1,000-point club. Layden is two 3-pointers away from 200 in her career.
- Jeanae Terry needs 65 rebounds for 1,000 in her career, 45 for 600 points at Purdue and 13 points for 1,000 in her career.

**ELITE ELLIS**

- Abbey Ellis is her final campaign in West Lafayette after honorable mention All-Big Ten nods each of the last two years.
- The Australian leads the team in scoring with 13.5 points per game and has reached double figures in 22 outings.
- Ellis is 10th in the Big Ten with a 83.5% mark at the line (71-85). Her career 86.8% mark is second in Purdue history.
- Ellis paired with Rashunda Jones to become the first Boilermaker duo to score 20 points in a game since 2019-20 when they both scored 20 against Texas A&M.
- The Australian is 35th among active NCAA Division I scoring with 1,861 career points.
- The fifth-year senior dropped 28 points against Indiana State, finishing one shy of her Purdue career high.
- Ellis' 10-game double-digit streak to start the year marked the second straight season Purdue had a player hit double figures in the first 10 games, following Lasha Petree's 11 games last year.

**ABBEY AMONG THE GREATS**

- Abbey Ellis joined the 1,000-point club with her ninth point against Northwestern on Feb. 14.
- She is the 36th player in Purdue history to join the club and the first since Karissa McLaughlin in 2020, as well as the first transfer to join the club.
- She is 32nd in Purdue history with 1,043 career points.
- Purdue's 1,000-point club includes all-time leading scorer MaChelle Joseph (2,405), Katie Gearlds in fourth (1,974) and Kelly Komara in 22nd (1,266).

**Fastest 1,000-Point Scorers at Purdue**

Rank	Name	Games	Years	Rank - Total
1.	MaChelle Joseph	52	1989-92	1st - 2,405
9.	Katie Gearlds	80	2004-07	4th - 1,974
	Brittany Rayburn	80	2009-12	6th - 1,795
11.	Joy Holmes	84	1988-91	8th - 1,747
12.	Abbey Ellis	85	2022-Pres.	31st - 1,043
	Jannon Roland	85	1994-97	10th - 1,662
	Courtney Moses	85	2011-14	9th - 1,674

**MONEY MADs**

- Senior Madison Layden is in her fourth campaign as one of the top all-around producers for the Boilermakers.
- Layden is third on the team with 10.3 points per game. She leads the Big Ten with a 42.7% clip from distance.
- Shooting 40.5% as a freshman, Layden is the first Boilermaker to shot over 40% from distance since 2012-13 and 2013-14.
- The senior's 3-point splits are impressive: Home - 43.0%, Away - 43.9%, Wins - 49.3%, Big Ten - 41.3%, Non-Conference - 44.6%.
- Layden has climbed up to sixth in program history in career triples, making 198 during her time in West Lafayette.
- She is 16 points shy of reaching 1,000 in her career to become the 37th member of the club at Purdue.
- Layden got engaged during the holiday break to Rees Zay, a Purdue graduate and former practice player of the program.
- She set the single-game Purdue freshman record for triples in a game with six against Iowa in 2020-21.

**25 YEARS FOR THE CHAMPS**

Record - 34-1, 16-0 Big Ten

Big Ten Finish - 1st Place

Big Ten Tournament - Champions

Championship Game

Purdue 62, Duke 45 (Ukari Figgs 18 pts)

Season Honors

USBWA All-America - Stephanie White

AP &amp; WBCA All-America - Stephanie White,

Ukari Figgs

Honda Award &amp; Wade Trophy - Stephanie White

Big Ten Player of the Year - Stephanie White

NCAA Tournament Most Outstanding Player - Ukari Figgs

All-Tournament Team - Ukari Figgs, Stephanie White, Katie Douglas

AP &amp; Naismith National Coach of the Year - Carolyn Peck



Purdue celebrates the 25th anniversary of its 1999 National Championship, the only one in the Big Ten in women's basketball. Led by National Coach of the Year Carolyn Peck and a star-studded list of greats in Stephanie White, Ukari Figgs, Camille Cooper, Katie Douglas, Michelle Duhart and Kelly Komara, Purdue knocked off 10 ranked opponents, including No. 1 Tennessee in the season opener.

After posting a perfect 16-0 record in Big Ten play and winning the league tournament, Purdue carved through the NCAA Tournament as a No. 1 seed, before defeating Duke 62-45 in the National Championship Game.

**INDIANA MISS BASKETBALL**

- Jayla Smith is the 10th Indiana Miss Basketball to play at Purdue, winning the award in 2021.
  - The long history of Purdue welcoming the state's top player extended back to 2003, when Katie Gearlds became the fifth honoree to pick West Lafayette.
  - Madison Layden (2020) and Rashunda Jones (2023) finished as runner-ups in their senior campaigns.
  - Purdue holds the record for most Indiana Miss Basketball winners, followed by Indiana, Notre Dame, Tennessee tied for second with four.
- |                                    |                                  |
|------------------------------------|----------------------------------|
| 1984 Sharon Versyp, Mishawaka      | 1991 Jennifer Jacoby, Rossville  |
| 1995 Stephanie White, Seeger       | 1998 Kelly Komara, Lake Central  |
| 2003 Katie Gearlds, Beech Grove    | 2005 Jodi Howell, Alexandria     |
| 2008 Brittany Rayburn, Attica      | 2010 Courtney Moses, Oak Hill    |
| 2017 Karissa McLaughlin, Homestead | 2021 Jayla Smith, Lawrence North |

**MACKAY ARENA**

Broke Ground: July 1965 | First Game: Dec. 2, 1967 | Capacity: 14,876

First Women's Game: Dec. 2, 1975 | Purdue 78, Illinois 74

Gearlds Overall: 30-15 | Non-Con: 19-1 | BIG: 11-14

Purdue Overall: 500-181 | Non-Con: 252-71 | BIG: 248-110

Home Wins vs. Ranked Teams: 50

**LARGEST CROWDS OF KG ERA**

Attendance	Date	Opponent	Result
14,876	2/5/23	No. 4 Indiana	L, 69-46
14,876	1/10/24	No. 3 Iowa	L, 96-71
11,796	1/22/24	No. 16 Indiana	L, 74-68
8,005	1/16/22	No. 5 Indiana	L, 73-78 (OT)
7,177	12/20/23	Indiana State	W, 79-63

**STARTING LINEUPS**

Lineup (Record)	Games
1. Smith, Terry, Ellis, Layden, Harper (0-1)	1
2. Terry, Stevenson, Ellis, Layden, Harper (11-14)	2-26

Player	19/20	21	22	23	24	Total	Record^
1   Reynolds	-	-	-	-			
2   Jones	-	-	-	-			
3   Smith	-	-	1	3	1	5	1-4
10   Terry	-/1*	23*	32	30	26	122*	47-41
11   Layden	-	-	-	-			
15   Reynolds	-	-	-	-			
21   Monson	-	-	-	-			
20   Stevenson	-	-	-	-	25	25	11-14
23   Ellis	-/29*	23*	31	18	26	127*	39-36
31   Swanson	-	-	-	-			
32   Harper	-	-	-	2		2*	
33   Layden	-	21	28	13	26	88	42-46
34   Harper	3*/5*	10*	32*	29	26	105*	29-26

\* Includes starts at previous school | ^ Record at Purdue



**BIG TEN STANDINGS**

	Big Ten	Overall	Streak
Ohio State	14-1	23-3	W13
Indiana	13-3	22-4	W1
Iowa	12-3	23-4	L1
Nebraska	10-6	18-9	W2
Michigan State	9-6	19-7	W2
Maryland	8-7	16-10	W4
Michigan	7-8	16-11	L2
Illinois	7-8	13-12	W2
Penn State	7-9	16-11	L6
Wisconsin	6-9	13-12	W2
Minnesota	5-10	15-11	L1
Purdue	4-11	11-15	L2
Northwestern	3-12	8-18	L4
Rutgers	2-14	8-21	L2

**NATIONAL RANKINGS**

	National	BIG	Stat
Assist-to-Turnover	74	19	1.02
Assists per Game	57	17	15.5
Bench Points Per Game	160	17	18.5
Blocked Shots per Game	178	19	3.0
Field-Goal %	137	23	41.7
Field-Goal % Defense	280	21	42.5
Fouls Per Game	108	11	158
FT Attempts Per Game	201	23	16.0
FT Percentage	15	3	78.1
FT Made Per Game	126	7	12.5
Rebound Margin	223	25	-0.9
Defensive Rebounds Per Game	215	21	24.5
Offensive Rebounds Per Game	263	23	10.1
Rebounds Per Game	250	23	34.7
Scoring Defense	277	17	69.4
Scoring Margin	222	21	-1.5
Scoring Offense	132	21	67.9
Steals Per Game	205	15	7.3
3-Point Attempts Per Game	178	19	19.1
3-Point Percentage	96	19	33.1
3-Point Percentage Defense	333	25	35.3
3-Pointers Per Game	147	17	6.3
Turnover Margin	187	19	0.12
Turnovers Forced Per Game	215	13	15.3
Turnovers Per Game	128	17	15.2
Winning Percentage	225	23	42.3

**INDIVIDUAL NATIONAL RANKINGS (TOP-50)**

TOP 50 RANKINGS	National	BIG	Stat
<b>Madison Layden</b>			
3-Point Percentage	20	3	42.7

**Jeanae Terry**

Assists	10	3	162
Assists Per Game	10	3	6.2

**BOILER NOTES****JT - START UNKNOWN, FINISH UNFORGETTABLE**

• "Start Unknown, Finish Unforgettable" is the mantra Jeanae Terry lives by so much she has a tattoo featuring that phrase.

• Last season, she was one of three players (Iowa's Caitlin Clark and Notre Dame's Olivia Miles) to record at least 6.0 points, rebounds and assists per game.

• Terry and Clark are the only two players in the nation to dish out 150 assists and haul in 200 rebounds in each of the last two years.

• Terry holds the second and third spots on the single-season assist lists, as well as the program's lead for career assist-to-turnover ratio.

• The Detroit native is the only player in Purdue men's or women's basketball history to amass multiple triple-doubles in a season and a career, a feat she achieved during the 2021-22 campaign.

• In both of her triple-double performances, the last category Terry hit double digits in was points.

• Terry is also the only Boilermaker to record a non-point double-double. Jeanae Terry recorded the mark four times since the start of last season, the most of any player in the nation since 2009.

TERRY'S NATIONAL RECOGNITION	Stat	National	BIG
Assist-to-Turnover	2.18	44	4
Assists	155	11	2
Assists Per Game	6.2	10	2
Rebounds	178	146	8
Rebounds per Game	7.1	192	8
Non-Point Double-Doubles	2	1	1

**900 REBOUNDS, 700 ASSISTS, 200 STEALS IN BIG TEN HISTORY**

Player	School	Rebs	Assts	Stls
Samantha Logic	Iowa, 2012-15	922	898	260
Jeanae Terry	Purdue/Illinois, 2020-Pres.	920	720	229
Approaching				
Caitlin Clark	Iowa, 2021-Pres.	882	1,018	185

*\*Also the only players in Big Ten history with 900 rebounds and 700 assists*

**TERRY'S NON-POINT DOUBLE-DOUBLES**

Opponent, Date	Assts	Rebs	Pts	Other
Northwestern, 2/14/24	11	12	1	4 stls, 1 blk
SEMO, 12/3/23	11	10	1	1 blk, 1 stl
Penn State, 2/22/23	10	10	9	8 stls
Murray State, 11/13/22	10	10	9	1 stl
Marshall, 11/10/22	10	10	5	2 stls

**PURDUE TRIPLE-DOUBLES**

Name	Opponent, Date	Pts	Rebs	Assts/Blks
Jeanae Terry	Minnesota, 1/27/22	10	11	12 assts
Jeanae Terry	Miami, 12/19/21	11	12	10 assts
Stephanie White	Indiana, 1/22/99	20	11	10 assts
Danielle Campbell	Butler, 11/17/07	12	11	11 blks

**ACTIVE BIG TEN LEADERS**

Assists	School	Stat	NCAA Rank
Caitlin Clark	Iowa	1,018	1
Jeanae Terry	Purdue/Illinois	720	4
Jaz Shelly	Nebraska	589	11
Darian White	Nebraska/Montana St.	524	17

Rebounds	School	Stat	NCAA Rank
Mackenzie Holmes	Indiana	948	23
Kendall Bostic	Illinois/Michigan St.	925	30
Jeanae Terry	Purdue/Illinois	920	32
Caitlin Clark	Iowa	882	39

**THE SPIDER - RASHUNDA JONES**

• Rashunda Jones was the first South Bend Washington commit before the Reynolds sisters joined to reunite the powerful trio.

• Coming off the bench, Jones is fifth on the team with 7.7 points per game. She has hit 20 points three times this season, the first Boilermaker rookie to do it since Dominique Oden in 2016-17.

• She was tabbed one of the best freshmen in the nation from a major conference coming off the bench this season.

• Jones is one of two players from the Big Ten and among four freshman nationally with eight points per game and no starts.

• Jones has been named Big Ten Freshman of the Week once, after a 20-point performance against Texas A&M.

• Her 23 points against Penn State were the most by a Boilermaker freshman since Dominique Oden in 2016-17. Jones' performance at Penn State featured 10 made free throws, the most by a Purdue rookie since KK Houser in 2009-10.

• Jones was tabbed the 2023 Indiana Miss Basketball runner up.

• Her versatility earned her the nickname "Spider" from her high school head coach and Amiyah & Mila's father - Steven.

**TERRY'S TIDBITS**

• Jeanae Terry has shown herself to be even more of a pass-first point guard in her final season of college basketball.

• The fifth-year is averaging 5.0 points, 7.4 rebounds and 6.2 assists per game with a 2.1 assist-to-turnover ratio.

• Terry owns the best career assist-to-turnover mark in Purdue history at 2.00, while she will post three of the top-15 single-season marks in program history.

• Terry is one of three players from the Big Ten averaging five points, rebounds and assists per game (Shyanne Sellers - Maryland and, unsurprisingly, Caitlin Clark - Iowa).

• Terry is second in Big Ten assists and fifth in rebounding, while sitting second in assists and fourth rebounds in league play.

• Terry and Caitlin Clark are the only players in the Big Ten to rank in the top 10 in rebounding, assists and steals.

• Terry notched the first non-point double-double of the year nationally against SEMO, before posting her second of the season against Northwestern.

• She has five non-point double-doubles as a Boilermaker, the most nationally since 2009-10.

• During her time in West Lafayette, Terry has set the program record for triple-doubles and non-point double-doubles.

• Terry has 517 assists at Purdue to rank fourth on the program's all-time charts.

**SNIPER SOPHIE SWANSON**

• A pure shooter and scorer, Sophie Swanson joined the program after a stellar prep career at Barrington in Illinois.

• Swanson is averaging 6.3 points in 9.8 minutes per game. Her per 40-minute average for points is 25.8.

• After hitting four triples at Michigan State on Jan. 24, Swanson dropped 19 points with five triples against the Spartans on Feb. 21, the most triples by a Purdue rookie since 2020-21.

• Swanson made her collegiate debut against Southern Indiana with two points and two rebounds after missing the opening five games rehabbing from her high school injury.

• Swanson was named the 2022 Illinois Miss Basketball and 4A Player of the Year following her junior campaign.

• She set the school record for points in a season (750), 3-pointers in a year (86), thrice set the school mark for points in a game (40, 37, 36).

**LETTING IT FLY**

• Shoot before you turn it over - that's the goal for Purdue's offense.

• The Boilermakers are 7-4 when making seven or more triples this season and 30-19 when hitting that mark in the Gearlds era.

• Purdue has made 10 or more 3-pointers in 14 games in the Katie Gearlds era. Prior to her return, the Boilermakers tallied just 22 double-digit triple games in the preceding 12 seasons.

• The Boilermakers have not been shy about shooting the three during Katie Gearlds' time on the sideline, notching the first and second most made and attempted triples in program history over the last two years.

**BOILER NOTES****DISHING OUT DIMES**

- The Boilermakers are 5-0 this year and 18-0 over the last three seasons when dishing out 20 or more assists.
- Against Southern, the Boilermakers dished out 19 assists on 20 made field goals. They were the fifth most of the Gearlds era, while the 95% assist rate was the best by Purdue since 2015 against Minnesota (24 ast, 25 FGM).
- Purdue dished out 24 assists against Southern Indiana, which ranked third in the Gearlds era.
- The Boilermakers posted their second-highest tally of assists under Gearlds with 25 helpers on 29 made field goals against Northwestern on Feb. 14.

**HOME SWEET HOME**

- Purdue is 9-5 at Mackey Arena, scoring 75.2 points per game, while holding opponents to just 66.1 points per night.
- The Boilermakers have shot 44.7% from the field and 35.5% from distance at home, compared to marks of 38.8% and 32.4% when on the road this year, respectively.
- Winning their first eight games at home this season, Purdue reached its first 10-game winning streak since Katie Gearlds' playing days, a 12-game stretch from March 19, 2006, against Missouri State to Jan. 25, 2007, against Northwestern.
- Purdue's longest home winning streak is 26 games that spanned from Dec. 2000 to March 2002 when associate head coach Kelly Komara laced them up for the Boilermakers.

**FIGHT LIKE A BOILERMAKER PINK OUT**

- The Boilermakers snapped a seven-game losing skid with a 77-72 overtime win against Illinois on Feb. 5.
- Mary Ashley Stevenson paced Purdue with 25 points, including a perfect 9-of-9 at the charity stripe.
- Jeanne Terry narrowly missed out on a triple-double with 14 assists, nine points and nine rebounds. It was the second most assists in a game in Purdue history.
- Purdue auctioned off its game-worn pink uniforms with multiple jerseys selling for over \$1,000 with proceeds benefiting the Purdue Institute for Cancer Research.

**PACKING MACKEY**

- Head coach Katie Gearlds continues to bring the magic back to Mackey Arena, as more fans come through the turnstiles.
- Purdue has topped 5,000 fans in six home games this season and rank 13th nationally and fourth in the Big Ten at 6,274.
- Purdue has sold its most season tickets since 2012-13.
- Purdue has sold out Mackey Arena four times in program history and twice under head coach Katie Gearlds.
- Following renovations of Mackey Arena, the new attendance number grew to 14,876.
- Purdue set a new attendance record last season with a capacity crowd when it hosted Indiana for its first sellout since 2000.
- The Boilermakers are the eighth team this season to host a game with a crowd over 14,000.

**SELLOUTS AT MACKEY ARENA**

Player	School	Attendance	Result	Lead Scorer
1/10/2024	Iowa	14,876	L, 96-71	Abbey Ellis - 15
2/5/2023	Indiana	14,876	L, 69-46	Lasha Petree - 13
2/27/2000	Iowa	14,123	W, 73-59	Katie Douglas - 24
2/14/1999	Ohio State	14,123	W, 88-58	Camille Cooper - 19

**ONE OF THE BEST SINCE 1999**

- At the end of January, The Athletic unveiled its Top-20 Assistant Coaches and Purdue associate head coach Kelly Komara was on the list.
- Komara is in her first season back home in West Lafayette, after serving two campaigns from 2014-16.
- She was a prominent member of Purdue's 1999 National Championship team during her playing days from 1999-02. She reached two title games, four NCAA Tournaments, five combined Big Ten titles.
- She played 134 games for the Old Gold and Black with 9.4 points, 3.3 rebounds and 3.0 assists per game and was named the 2002 Big Ten Defensive Player of the Year as a senior.
- Komara was fourth Indiana Miss Basketball to play at Purdue.

**RANKED MATCHUPS**

- Head coach Katie Gearlds has guided Purdue to three ranked wins during her time in West Lafayette. Purdue had lost its last 25 games to ranked opponents before the Gearlds era started.
- Purdue recorded back-to-back ranked wins for the first time since 2018 during the 2022-23 campaign.
- With a 73-65 win over No. 2 Ohio State in Columbus, the Boilermakers tallied their first ever top-five win on the road.
- Purdue snapped the program's 19-game skid to ranked teams with a 66-61 win over No. 17 Florida State last season.
- Gearlds was 23-22 against ranked teams during her playing days in West Lafayette.
- Purdue has 19 wins in program history against AP Top-5 teams.

**A TOUGH STRETCH**

- The month of January was a gauntlet for the Boilermakers, which is not a surprise in the Big Ten.
- Purdue faced seven straight teams in the top 30 of the NET when they played and were in the top 35 of the NET when the stretch ended. Despite the streak, Purdue averaged 9,267 fans over four games at home.
- The Boilermakers played No. 15 Indiana to six points and No. 12 Ohio State to three points at Mackey Arena.
- All of Purdue's non-neutral losses have come against teams in the top 50 of the NET.

**LOCK DOWN DEFENSE**

- The Boilermakers have held 10 opponents to 60 or fewer points this season.
- Purdue is 8-2 in those games this year and 23-3 under Katie Gearlds when keeping a team to 60 points or fewer.
- Purdue held Wisconsin to just 50 points on Dec. 30.
- Purdue kept Northwestern to just 48 points, the lowest since 47 points against Drake in 2019-20, and the fewest by a Big Ten team since 42 against Ohio State in 2018-19.
- The Boilermakers are generating 13.5 points per game off 15.5 opponent turnovers this season.

**MAGIC MCKENNA**

- McKenna Layden has shown poise on the floor this year as a quality defender rebounder and one of the first subs.
- She reunited with her sister Madison following a 78-17 career record at Northwestern High School and was named an Indiana All-Star as a junior and senior.
- She set the Northwestern single-game record with 47 points with nine 3-pointers against Taylor in 2021.
- In addition to her success playing for her mother Kathie, including reaching the IHSAA 4A Championship Game as a freshman alongside Madison, Layden won two sectional titles in volleyball and tennis each.

**MILA MAKES HER WAY HOME**

- Mila Reynolds continues to see her spot in the rotation grow each week as a post option off the bench.
- Reynolds set career highs with six points and five rebounds against Valparaiso.
- She made her first career 3-pointer against Indiana State.
- She returned to her home state and reunited with her little sister Amiyah after playing her freshman season at Maryland.
- She won the 2022 IHSAA 3A State Championship with Amiyah and Rashunda Jones.
- The eldest Reynolds totaled 2,099 career points, second in Panther history behind 2010 graduate Skylar Diggins-Smith.

**PURE LEADER AMIYAH REYNOLDS**

- Amiyah Reynolds completed a prolific career for South Bend Washington, going 95-18, winning an IHSAA State Champion and three conference titles.
- Reynolds ranked second in South Bend Washington history with 564 assists.
- Her 1,000th point came off an assist from Rashunda Jones.
- Sadly, due to an injury that ended her senior campaign in February, Reynolds will redshirt for the 2023-24 season.
- Despite sitting out drills, Gearlds has made a point to work with Reynolds during practice to ingrain her in the offense.

**PURDUE SPECIALTY STATS (PURDUE/OPP)**

	Off TO	Paint	2nd-Ch.	Fast B.	Bench
UCLA	9-26	20-40	8-13	2-9	20-18
Southern	6-14	22-14	3-2	4-0	4-10
Texas A&M	26-7	34-22	8-9	7-4	20-13
Florida	15-10	30-24	7-12	4-2	17-10
Georgia	8-20	26-36	14-19	15-14	10-36
USI	19-12	36-26	10-6	11-0	36-16
Dayton	13-12	30-26	9-20	5-2	11-26
Valparaiso	17-17	32-20	5-0	18-7	45-21
SEMO	25-4	42-32	13-12	14-11	20-22
Minnesota	10-17	24-22	7-14	11-2	0-5
Notre Dame	6-26	14-44	4-13	5-26	14-18
Indiana State	19-15	22-22	12-13	6-0	22-30
Wisconsin	25-5	40-26	16-7	10-0	21-29
Rutgers	16-4	32-24	15-16	7-2	21-4
Iowa	16-11	20-36	6-17	0-9	15-30
Maryland	6-25	26-38	10-12	7-16	14-25
Penn State	13-21	30-32	11-9	8-16	34-39
Indiana	13-15	30-18	13-9	4-2	13-2
MSU	15-28	26-54	14-16	22-28	22-47
Ohio State	15-20	28-32	10-7	15-13	24-17
Nebraska	8-8	30-34	8-11	4-2	18-15
Illinois	10-9	42-32	15-8	7-11	8-5
Indiana	0-12	26-42	0-13	9-13	21-16
Northwestern	13-19	36-26	16-4	19-8	18-28
Nebraska	7-11	22-30	2-9	9-8	16-15
MSU	9-18	22-36	9-10	4-6	19-29
Wisconsin					
Penn State					
Michigan					
Totals	339-386	742-784	245-281	249-211	483-526
Averages	13.0-14.8	28.5-30.2	9.4-10.8	9.6-8.1	18.6-20.2

**PURDUE SCORING BY CLASS**

	Fr.	So.	Jr.	Sr.	5th/6th
UCLA	20	0	4	0	25
Southern	17	0	0	21	29
Texas A&M	22	0	0	8	42
Florida	10	0	13	0	26
Georgia	21	0	0	14	22
USI	38	2	8	16	31
Dayton	15	0	4	13	35
Valparaiso	47	6	6	10	14
SEMO	21	4	6	16	36
Minnesota	8	0	0	17	33
Notre Dame	13	2	4	2	18
Indiana State	24	7	2	11	35
Wisconsin	26	2	6	14	41
Rutgers	23	3	2	19	30
Iowa	11	4	8	10	38
Maryland	21	0	1	13	31
Penn State	42	2	3	0	20
Indiana	26	0	0	10	32
MSU	19	2	4	9	36
Ohio State	31	5	0	2	30
Nebraska	9	7	4	7	27
Illinois	27	2	4	14	30
Indiana	31	4	2	6	19
Northwestern	19	3	4	16	32
Nebraska	26	2	4	11	22
MSU	27	0	0	8	24
Wisconsin					
Penn State					
Michigan					
Totals	594	57	89	267	758
Averages	22.8	2.2	3.4	10.3	29.2



**TOP PERFORMANCES** \*includes previous school

Triple-Double	23-24	Career
Jeanae Terry		2 / 2-0
<b>Double-Double</b>	<b>23-24</b>	<b>Career</b>
Jeanae Terry	3 / 3-0	17* / 10-0
Caitlyn Harper	1 / 1-0	1 / 1-0
Mary Ashley Stevenson	1 / 1-0	1 / 1-0
<b>Score 10+ Points</b>	<b>23-24</b>	<b>Career</b>
Caitlyn Harper	16 / 7-9	97* / 16-18
Abbey Ellis	22 / 10-12	89* / 30-28
Madison Layden	16 / 10-6	53 / 31-22
Jeanae Terry	3 / 1-2	34* / 10-5
Jayla Smith	1 / 0-1	15 / 8-7
Mary Ashley Stevenson	13 / 7-6	13 / 7-6
Rashunda Jones	8 / 4-4	8 / 4-4
Sophie Swanson	4 / 1-3	4 / 1-3
<b>Scored 20+ Points</b>	<b>23-24</b>	<b>Career</b>
Abbey Ellis	4 / 3-1	25* / 7-2
Caitlyn Harper	1 / 1-0	21* / 1-1
Jeanae Terry		3* / -
Madison Layden	1 / 1-0	3 / 3-0
Rashunda Jones	3 / 2-1	3 / 2-1
Mary Ashley Stevenson	1 / 1-0	1 / 1-0
<b>Made 1 3-Pointer</b>	<b>23-24</b>	<b>Career</b>
Abbey Ellis	23 / 11-12	93* / 32-27
Madison Layden	20 / 11-9	83 / 43-40
Caitlyn Harper	14 / 8-6	36* / 16-11
Jeanae Terry	2 / 0-2	26* / 2-4
Jayla Smith	4 / 1-3	26 / 13-13
Sophie Swanson	13 / 4-9	13 / 4-9
Rashunda Jones	6 / 3-3	6 / 3-3
McKenna Layden	6 / 2-4	6 / 2-4
Emily Monson	3 / 2-1	3 / 2-1
Mila Reynolds	3 / 2-1	3 / 2-1
Mary Ashley Stevenson	2 / 1-1	2 / 1-12
<b>Made 2+ 3-Pointers</b>	<b>23-24</b>	<b>Career</b>
Madison Layden	17 / 10-7	60 / 33-27
Abbey Ellis	8 / 6-2	49* / 18-8
Caitlyn Harper	4 / 2-2	25* / 3-5
Jayla Smith		8 / 4-4
Jeanae Terry		7* / 0-1
Sophie Swanson	5 / 1-4	5 / 1-4
Rashunda Jones	2 / 2-0	2 / 2-0
McKenna Layden	1 / 1-0	1 / 1-0
<b>Recorded 10+ Rebounds</b>	<b>23-24</b>	<b>Career</b>
Jeanae Terry	7 / 5-2	28* / 14-7
Caitlyn Harper	1 / 1-0	11* / 1-0
Abbey Ellis		2* / 0-0
Mary Ashley Stevenson	2 / 1-1	2 / 1-1
<b>Recorded 5+ Assists</b>	<b>23-24</b>	<b>Career</b>
Jeanae Terry	16 / 9-7	73* / 36-22
Madison Layden	1 / 1-0	15 / 8-7
Abbey Ellis	2 / 1-1	15* / 7-1
Rashunda Jones	1 / 0-1	1 / 0-1
<b>Recorded 3+ Steals</b>	<b>23-24</b>	<b>Career</b>
Jeanae Terry	8 / 5-3	32* / 17-6
Abbey Ellis	5 / 3-2	23* / 6-3
Madison Layden	3 / 3-0	22 / 12-10
Caitlyn Harper	1 / 1-0	8* / 1-0
Jayla Smith		4 / 4-0
<b>Recorded 3+ Blocks</b>	<b>23-24</b>	<b>Career</b>
Caitlyn Harper	2 / 0-2	14* / 1-3
Jayla Smith		1 / 0-1
Jeanae Terry		1* / 0-0
<b>Played a Complete Game</b>	<b>23-24</b>	<b>Career</b>
Madison Layden		2 / 1-1
Caitlyn Harper		1* / 0-0
Jeanae Terry	2 / 1-1	2 / 1-1

**BOILER NOTES****THE VOICE OF THE BOILERMAKERS**

• In his 34th season calling Purdue women's basketball, play-by-play man Tim Newton is closing in on his 1,000th game with Purdue women's basketball.

• He has called 1,014 games in his time with the Boilermakers.

• Purdue is 686-328 in games called by Newton. He has been on the air for 1,014 of Purdue's 1,485 total games.

• Newton has provided the call for all seven Big Ten regular season titles, all nine Big Ten Tournament Championships, three Final Fours and 25 of 27 NCAA Tournament appearances.

• Perhaps Newton's best call came in the final seconds of the 1999 National Championship as Purdue became the only Big Ten team to capture the national title.

"Ladies and gentlemen, the national champion team resides in West Lafayette, Indiana, as Katie Douglas throws the ball skyward. It's over. Purdue wins 62-45, capturing the national championship."

• His first game was on WBAA (920 AM) on Jan. 3, 1991 when No. 3 Purdue downed Ohio State at Mackey Arena 105-45.

• Based on the best research available, Newton and LSU's play-by-play voice Patrick Wright are the only active radio voices to reach 1,000 games called.

**A WEEKEND FOR THE CHAMPS**

• Purdue welcomed home its legendary 1998-99 team this weekend to celebrate the 25-year anniversary of the Big Ten's only national championship in women's basketball over the weekend of Nov. 10-12.

• The championship squad was honored in front of a sold-out Mackey Arena for the men's basketball game on Friday, before an on-field ceremony at the football game on Saturday. The weekend culminated with a halftime ceremony at the women's game in front of 5,002 fans on Sunday.

• Head coach Katie Gearlds unveiled a new trophy display for the Sears Trophy at the front of Mackey Arena, complete with photos and quotes of players from that magical year.

• A major piece from the celebration involved a Boilermaker who was gone too soon. Tiffany Young, a charismatic junior guard passed away four months after winning the title in a car accident. Throughout the 2023-24 season, Purdue will reopen the Tiffany Young Scholarship Endowment to provide a women's basketball student-athlete a scholarship in her name.

**THE BIG TEN'S ONLY NATIONAL CHAMPIONS**

• Led by National Coach of the Year Carolyn Peck, the Boilermakers finished the year with a program-best 34-1 record, a perfect 16-0 mark in Big Ten play, a Big Ten Tournament title and a 62-45 win in the National Championship Game over Duke.

• The 1998-99 season opened when Purdue knocked off three-time defending national champion and No. 1-ranked Tennessee at Mackey Arena 78-68.

• Stephanie White was named an All-American, the Honda Award winner and the Wade Trophy honoree, as well as the Big Ten Player and Athlete of the Year. Ukari Figgs earned an honorable mention All-America nod and was named the 1999 Most Outstanding Player of the NCAA Tournament.

• The victory was bittersweet as guard Tiffany Young tragically died when she was killed by a drunk driver just over four months after winning the national championship. The 1998-99 team have continued to bring back their memories and love for Young over the last 25 years to ensure her impact on their lives will never be forgotten.

**MACKEY IS ONE OF A KIND**

• The Gold and Black Sound (G.A.B.S.) is overwhelmingly the best pep band in the Big Ten with constant, never-ending energy.

• In the final minute of halftime, Purdue plays "Sandstorm" by Darude. Fans join G.A.B.S. in a special dance. If you want to partake the steps are - two right punches across your body high, two high with your left, two right punches across your body low, two low with your left, repeat with one punch, clap, shimmy, "Woo!!"

• New this season and prior to every home game, Purdue displays a video call "ALL-IN". The video features several Boilermaker legends detailing the heights of the program.

**THE NEXT GENERATION**

• National Signing Day brought Purdue a trio of talented high schools seniors, as Katie Gearlds welcomed Jordyn Poole, Lana McCarthy and Kendall Puryear to the Boilermaker family.

• All three players were named McDonald's All-America Game nominees.

• Out of Fort Wayne Snider High School, Poole is a 5-7 guard and a candidate for Indiana Miss Basketball. Poole was the No. 54 player in the nation and averaged 16.7 points, 3.6 rebounds and 4 assists per game as a junior. Her uncle is Purdue legend Roosevelt Barnes and cousin was Purdue Big Ten Player of the Year Caleb Swanigan.

• Puryear, a 6-2 forward from Lee's Summit, Mo., averaged 15.9 points, 9.9 rebounds and 1.6 assists per game as a junior to be ranked the No. 2 player in the state.

• McCarthy, a 6-4 forward from Bedford, N.H., is the No. 1 player in the state and averaged 21.7 points per game while reaching her third straight state championship game. McCarthy also won four straight volleyball state titles, set the state record for blocks and was named the New Hampshire Volleyball Player of the Year.

**BEEN THERE. THEY'RE BACK**

• Purdue's coaching staff features a trio of alumnae who left their marks on the program during their playing days.

• Head coach Katie Gearlds was one of the best pure scorers in Purdue history, reaching four NCAA Tournaments, three Sweet 16s and an Elite Eight. She continues to rank in the top-10 of numerous career stat categories and was named an All-American in 2007 as a senior.

• 1999 National Champion and new associate head coach Kelly Komara returned to West Lafayette for her second stint on the sidelines. Komara was the 2002 Big Ten Defensive Player of the Year and helped the Boilermakers reach two national title games, winning the lone championship in Big Ten women's basketball.

• Alex Guyton is in her fifth season on staff and third as an assistant coach. Guyton reached three NCAA Tournaments and one the Big Ten championship her four-year career for the Boilermakers

• Another new addition to the coaching ranks at Purdue is dynamic recruiting assistant coach Mark Stephens. After spending the last five seasons on staff at Toledo and Xavier, Stephens returns to the state to lead the Boilermakers' posts and recruiting operations. Stephens' in-state ties run deep after serving as a coach at several high schools and AAU programs.

• While they didn't play for Purdue, director of video and recruiting Lakan Hasser-Smith and graduate assistant Abby Downard are in-state products with deep ties to Katie Gearlds, after playing their entire careers for her at Marian.

• Director of operations Amie Anthrop is well-acustomed to the bright lights of Purdue. After an award-winning career as a guard at Southern Indiana, she married Jade Anthrop, brother to Dru (basketball), Danny (football) and Jackson (football).

**SOMETHING ABOUT A TRUCK**

• A heartfelt story told by the Big Ten Network during the 2022-23 season centered around Gearlds' relationship with her parents.

• As a freshman at Beech Grove High School, Gearlds made a deal with her parents that if she was named Indiana Miss Basketball, they would buy her the car of her dreams.

• Four years and an incredible high school career later, her father Tony traded in his truck to surprise Katie with a 2002 yellow Ford Mustang in the family garage. Tony took over Katie's 1988 Chevy Celebrity, driving it until the wheels fell off.

• In the summer of 2022, Katie returned the favor and surprised her dad to buy him any brand new he wanted. The only rule, it could not be red.

**PROBOILERS**

• Purdue has four players currently playing pro ball in Europe.

• Aya Traore, a teammate of Gearlds' during her playing time in West Lafayette, plays for Lleida in the Spanish LF2 Division.

• Ae'Rianna Harris - Picken Claret in the Spanish LF2 Division.

• Andreona Keys - Arad in the Romanian Liga Nationala.

• Lasha Petree - Vimpelin Veto in the Finnish Korisliiga.

**SISTER SISTER****Madison Layden** - Feb. 7, 2002**McKenna Layden** - Jan. 11, 2005**Age Gap** - 1,069 days or 2 years, 11 months, 4 days**Parents** - Kathie & Jeff Layden**Hometown** - Kokomo, Ind.

• Madison and McKenna Layden are back together for the first time since Madison's senior year of high school in 2020, when the duo guided Northwestern to the 4A IHSA State Championship game.

• Their mother Kathie was the head coach of the basketball team assisted by their father Jeff. The Laydens won back-to-back state titles in 2018 and 2019.

• The tandem played basketball, volleyball and tennis together throughout their high school careers.

• Kathie won five Indiana State championships as a head coach, the most by a non-private school head coach, during her career that she retired from in 2023 after 23 seasons.

• Madison claimed a trio of sectional titles and back-to-back 3A state titles, before McKenna joined the high school ranks.

• McKenna owns the Northwestern High School record for points in a game with 47 off nine 3-pointers during her senior year.

• The Laydens were honored in a Hamburger Helper commercial when McKenna and Madison were children.

• Madison got engaged during the holiday break this year.

**Mila Reynolds** - July 1, 2003**Amiyah Reynolds** - June 25, 2004**Age Gap** - 360 days or 11 months, 24 days**Parents** - Steve & Marcy Reynolds**Hometown** - South Bend, Ind.

• After an impressive three years together at South Bend Washington, Mila and Amiyah Reynolds are reunited on the same roster after a year hiatus.

• Combined, the duo won the 2022 Class 3A State Championship and posted a 68-17 record together over three years.

• Mila finished her career with a 78-30 mark and amassed 2,099 career points, second in program history to Skylar Diggins-Smith.

• Amiyah was the No. 43 player in the nation and the second highest Big Ten signee in the class of 2023, per ESPN. She finished her career ranked second in assists with 564 and in the top 10 in points. Reynolds' senior season came to an abrupt ending due to an foot/ankle injury that will rule her out of the 2023-24 season.

• The unofficial third sister of the group is fellow South Bend Washington Panther Rashunda Jones who created an unstoppable backcourt with Amiyah. The duo went 95-18 over their four years on the court.

• Rashunda finished as the runner up for the 2023 Indiana Miss Basketball.

• Their father Steve was the head coach of South Bend Washington assisted by their mother Marcy, both of whom played professionally overseas.

• Mila and Amiyah are two of the seven Reynolds children.

• The Reynolds and Rashunda Jones have played together since grade school after attending church together as children.

**Caitlyn Harper** - Feb. 12, 2000**Alaina Harper** - Dec. 4, 2003**Age Gap** - 1,391 days or 3 years, 9 months, 22 days**Parents** - Dale & Rhonda Harper**Hometown** - Heartland, Wis.

• Due to the long age gap, Caitlyn and Alaina Harper will play on the same team for the first time in their lives.

• After Caitlyn had a standout career at Arrowhead High School, Alaina followed suit wearing the same No. 34 her sister wore.

• Prior to transferring to Purdue ahead of the 2022-23 season, Caitlyn was an all-conference player at Arrowhead before earning WAC Player of the Year honors at Cal Baptist.

• Alaina spent her freshman campaign at Grand Canyon following an all-conference career at Arrowhead.

• Their father Dale played collegiately at Bemidji State.

• Strong academics have always played a major role in their lives. Caitlyn was a 2022 CoSIDA All-American and earned a 3.9 GPA at Arrowhead. Alaina bettered that with a perfect 4.0 GPA in high school.

**PURDUE IN THE POLLS**

Week	AP	Coaches	NET
Preseason	-	-	-
Week 1	-	-	-
Week 2	-	-	-
Week 3	-	-	-
Week 4	-	-	-
Week 5	-	-	87
Week 6	-	-	84
Week 7	-	-	84
Week 8	-	-	84
Week 9	-	-	75
Week 10	-	-	77
Week 11	-	-	79
Week 12	-	-	80
Week 13	-	-	78
Week 14	-	-	79
Week 15	-	-	77
Week 16	-	-	77
Week 17	-	-	-
Week 18	-	-	-
FINAL	-	-	-

**SINGLE-GAME RECORDS****SINGLE-GAME POINTS**

Overall	41	Katie Gearlds	at Wisconsin	2/18/07
Senior	41	Katie Gearlds	at Wisconsin	2/18/07
Junior	37	MaChelle Joseph	at Michigan State	2/15/91
Sophomore	40	Shereka Wright	at Michigan	2/17/02
Freshman	34	Leslie Johnson	at Vanderbilt	12/5/93

**SINGLE-GAME FIELD GOALS**

Overall	16	MaChelle Joseph	at Michigan State	2/15/91
Senior	14	Jannon Roland	at Ohio state	1/23/97
Junior	16	MaChelle Joseph	at Michigan State	2/15/91
Sophomore	15	Shereka Wright	at Michigan	2/17/02
Freshman	13	Leslie Johnson	Northwestern	2/27/94

**SINGLE-GAME 3-POINTERS**

Overall	12	Brittany Rayburn	at Minnesota	1/12/12
Senior	12	Brittany Rayburn	at Minnesota	1/12/12
Junior	7	Karissa McLaughlin	at Michigan State	1/30/20
Sophomore	9	2x, K. McLaughlin	Northwestern	2/17/19
Freshman	6	5x, Madison Layden	at Iowa	1/18/21

**SINGLE-GAME FREE THROWS MADE**

Overall	16	Shereka Wright	Penn State	1/16/03
Senior	13	2x, Shereka Wright	at Northwestern	2/15/04
Junior	16	Shereka Wright	Penn State	1/16/03
Sophomore	14	3x, Courtney Moses	at Northwestern	1/26/12
Freshman	14	Leslie Johnson	Ohio State	2/13/94

**SINGLE-GAME REBOUNDING**

Overall	25	Leslie Schultz	at Miami (OH)	12/2/81
Senior	20	Joy Holmes	at Wisconsin	1/27/91
Junior	25	Leslie Schultz	at Miami (OH)	12/2/81
Sophomore	20	Cathery Tyree	at Michigan State	1/11/85
Freshman	23	Natasha Cender	Michigan	2/7/76
Offensive	12	Joy Holmes	Minnesota	2/10/91
Defensive	16	2x, Whitney Bays	at Dayton	12/7/14

**SINGLE-GAME ASSISTS**

Overall	16	MaChelle Joseph	Northern Illinois	3/22/92
Senior	16	MaChelle Joseph	Northern Illinois	3/22/92
Junior	14	Lisa Jahner	Michigan	3/7/87
Sophomore	12	MaChelle Joseph	New Mexico State	12/29/89
Freshman	11	3x, K. McLaughlin	Penn State	1/28/18

**SINGLE-GAME BLOCKS**

Overall	11	Danielle Campbell	Butler	11/17/07
Senior	9	Ae/Rianna Harris	at #5 South Carolina	12/15/19
Junior	11	Danielle Campbell	Butler	11/17/07
Sophomore	7	3x, Ae/Rianna Harris	Lamar	11/18/17
Freshman	7	2x, Nora Kiesler	at Penn State	1/30/16

**SINGLE-GAME STEALS**

Overall	12	Joy Holmes	Minnesota	1/13/89
Senior	9	Michelle Duhart	Michigan State	2/24/00
Junior	10	Cherelle George	South Carolina	11/26/05
Sophomore	12	Joy Holmes	Minnesota	1/13/89
Freshman	8	FahKara Malone	Illinois	2/8/07

# 2023-24 PURDUE WOMEN'S BASKETBALL GAME NOTES

## WINNING MARGINS

### When Leading

Largest Margin of Victory	39, vs. Wisconsin, 12/30/23
Largest Overall Lead	45, vs. Wisconsin, 12/30/23
Largest Halftime Lead	24, vs. Wisconsin, 12/30/23
Largest Lead in a Loss	9, vs. Indiana, 1/21/24
Largest Halftime Lead in a Loss	
Largest Purdue Run	27, at Northwestern, 2/14/24

### When Trailing

Largest Margin of Defeat	43, at UCLA, 11/6/23
Largest Overall Deficit	45, at UCLA, 11/6/23
Largest Halftime Deficit	28, at UCLA, 11/6/23
Largest Deficit Overcome to Win	8, vs. Texas A&M, 11/16/23
Largest Halftime Deficit in a Win	
Largest Opponent Run	16, at Notre Dame, 12/17/23

### Games When the Margin is

	Win	Loss
1 Point	1	
2 Points		1
3 Points		2
4 Points		
5 Points	1	
6 Points		1
7 Points		
8 Points	1	1
9 Points		1
10-19 Points	3	3
20-29 Points	3	3
30+ Points	2	3

## RANDOM ODDS AND ENDS

Name	Consecutive Made Free Throws	Straight Games with a Three	Consecutive Starts
1 - Reynolds	-	-	-
2 - Jones	2	-	-
3 - Smith	1	-	-
10 - Terry	1	-	122*
11 - Layden	5	-	-
15 - Reynolds	9	-	-
20 - Stevenson	9	-	25
21 - Monson	-	-	-
23 - Ellis	8	3	41
31 - Swanson	3	4	-
32 - Harper	1	-	-
33 - Layden	8	3	26
34 - Harper	11	-	29

### Opening Tips

	Won-Lost	Record in Games
Jayla Smith	0-1	0-1
Mary Ashley Stevenson	10-15	11-14

### Scoring First

	2	3	FT	Record in Games
Abbey Ellis	8			4-4
Caitlyn Harper	4			2-2
Madison Layden	2	2		2-2
Mary Ashley Stevenson	7	1	1	2-7
Jeanae Terry		1		1-0

## RECORDS WATCH

• Check out which Boilermakers are climbing the single-season and career charts this year.

### CAREER ASSISTS AT PURDUE

1. MaChelle Joseph	628	1989-92
2. Stephanie White	578	1996-99
2. Jeanae Terry	535	2022-Present

### CAREER ASSIST TO TURNOVER RATIO AT PURDUE (MIN. 200 ASTS)

1. Jeanae Terry	1.97	2022-Present
2. April Wilson	1.68	2013-16
3. Jennifer Jacoby	1.64	1992-95
Katie Gearlds	1.64	2004-07
5. Karissa McLaughlin	1.54	2018-2021
6. Lisa Jahner	1.46	1985-88
Madison Layden	1.46	2021-Present
8. Cindy Lamping	1.40	1992-95
9. Dominique Oden	1.38	2017-20
10. Ukari Figgs	1.37	1996-99

### SEASON ASSIST TO TURNOVER RATIO AT PURDUE (MIN. 100 ASTS)

1. Katie Gearlds	2.56	2005-06
2. Lisa Johner	2.14	1987-88
3. Jeanae Terry	2.07	2023-24
4. Nicole Erickson	2.06	1995-96
5. Jeanae Terry	2.04	2022-23
6. Cindy Lamping	2.02	1993-94
7. April Wilson	2.01	2015-16
8. Laura Meadows	1.96	2001-02
9. Jennifer Jacoby	1.88	1994-95
10. Karissa McLaughlin	1.84	2018-19

### CAREER FREE THROW PERCENTAGE AT PURDUE (MIN. 175 ATT)

1. Courtney Moses	90.6 - 290-320	2011-14
2. Karissa McLaughlin	86.7 - 176-203	2017-21
3. Abbey Ellis	86.8 - 230-265	2022-Present
4. Katie Gearlds	86.3 - 314-364	2004-07
5. Ukari Figgs	84.1 - 359-427	1996-99
6. Brittany Rayburn	82.1 - 538-665	2009-12
Drey Mingo	82.1 - 183-223	2010-13

### CAREER DOUBLE FIGURE GAMES AT PURDUE

18. Erin Lawless	74 - 133	2004-07
19. Cathey Tyree	69 - 110	1984-87
20. Lisa Jahner	68 - 113	1985-88
Ashley Morrisette	68 - 125	2014-17
22. Christa LaCroix	67 - 112	1985-88
Kelly Komara	67 - 134	2010-14
KK Houser	67 - 124	2010-14
25. Karissa McLaughlin	66 - 195	2018-21
26. April Wilson	61 - 124	2013-16
27. Andreona Keys	59 - 132	2015-18
28. Erika Valek	58 - 131	2001-04
Abbey Ellis	58 - 88	2021-Present

### CAREER 3-POINTERS

1. Karissa McLaughlin	244	2018-21
2. Courtney Moses	240	2011-14
3. Katie Gearlds	238	2004-07
4. Cassidy Hardin	214	2019-23
5. Brittany Rayburn	201	2009-12
6. Madison Layden	198	2021-Present

### SINGLE-SEASON 3-POINT PERCENTAGE

1. Drey Mingo	48.2 - 59-125	2008-09
2. Jodi Howell	47.2 - 59-125	2003-04
3. Katie Gearlds	44.7 - 80-179	2013-14
4. Courtney Moses	44.0 - 48-109	1995-96
5. Stephanie White	43.7 - 62-142	1998-99
6. Beth Jones	43.3 - 52-120	2003-04
7. Madison Layden	42.7 - 56-131	2023-24
8. Jannon Roland	42.7 - 32-75	1993-94
9. Jennifer Jacoby	41.5 - 54-130	1994-95
10. Kelly Komara	41.3 - 26-63	1998-99

### CAREER 3-POINT PERCENTAGE

1. Nicole Erickson	41.9 - 85-203	1995-96
2. Jodi Howell	41.3 - 188-455	2006-10
3. Beth Jones	40.1 - 154-384	2001-04
4. Courtney Moses	39.7 - 240-605	2011-14
5. Drey Mingo	39.5 - 45-114	2010-13
6. Jennifer Jacoby	38.3 - 157-410	1992-95
Erika Valek	38.3 - 114-298	2001-04
8. Katie Gearlds	37.9 - 238-628	2004-07
9. Melina Griffin	37.0 - 40-108	1993-96
10. Stephanie White	36.5 - 183-501	1996-99
11. Jannon Roland	36.4 - 133-365	1994-97
12. Madison Layden	35.6 - 198-556	2020-Present
13. Erin Lawless	35.6 - 47-132	2004-07
14. Karissa McLaughlin	35.5 - 234-653	2018-21
15. Dominique Oden	35.0 - 172-482	2017-20
16. Bridget Perry	34.5 - 48-139	2014-17

### CAREER TRIPLE-DOUBLES

1. Jeanae Terry	2	2022-Present
-----------------	---	--------------

### CAREER NON-POINT DOUBLE-DOUBLES

1. Jeanae Terry	5	2022-Present
-----------------	---	--------------

## HONORS AT PURDUE

### Abbey Ellis

Team Captain for first season - 2023-24  
All-Big Ten Honorable Mention - 2021-22, 2022-23

### Caitlyn Harper

Team Captain for first time - 2023-24

### Rashunda Jones

Big Ten Freshman of the Week - Nov. 20

### Madison Layden

Team Captain for third season - 2021-2024

### Mary Ashley Stevenson

Big Ten Freshman of the Week - Jan. 2  
Big Ten Freshman of the Week - Feb. 12  
USBWA National Freshman of the Week - Feb. 13

### Jeanae Terry

Team Captain for third season - 2021-2024  
Second Team All-Big Ten - 2022-23  
Big Ten All-Defensive Team - 2022-23





**2023-24 ROSTER**

No.	Name	Yr.	Pos.	Ht.	Hometown/High School/Previous School
1	Amiyah Reynolds	Fr.	G	6-0	South Bend, Ind. / South Bend Washington
2	Rashunda Jones	Fr.	G	5-8	South Bend, Ind. / South Bend Washington
3	Jayla Smith	Jr.	G	6-0	Indianapolis, Ind. / Lawrence North
10	Jeanae Terry	5th	G	5-11	Detroit, Mich. / Wayne Memorial / Illinois
11	McKenna Layden	Fr.	G	6-2	Kokomo, Ind. / Northwestern
15	Mila Reynolds	So.	F	6-3	South Bend, Ind. / South Bend Washington / Maryland
20	Mary Ashley Stevenson	Fr.	F	6-2	New York City, N.Y. / The Dalton School
21	Emily Monson	Fr.	G	6-1	Murfreesboro, Tenn. / Blackman
23	Abbey Ellis	5th	G	5-6	Melbourne, Australia / Our Lady of Mercy / Cal Poly
31	Sophie Swanson	Fr.	G	5-10	Barrington, Ill / Barrington
32	Alaina Harper	So.	F	6-3	Hartland, Wis. / Arrowhead / Grand Canyon
33	Madison Layden	Sr.	G	6-1	Kokomo, Ind. / Northwestern
34	Caitlyn Harper	6th	F	6-3	Hartland, Wis. / Arrowhead / Cal Baptist

Name	Position	Year at Purdue	Year Coaching	Alma Mater
Katie Gearlds	Head Coach	3rd Year	11th Year	Purdue - '07
Kelly Komara	Associate Head Coach	1st Year / 3rd Year*	20th Year	Purdue - '02
Mark Stephens	Assistant Coach / Recruiting	1st Year	7th Year	Morehead State - '02
Alex Guyton	Assistant Coach	5th Year	7th Year	Purdue - '12
Tiffini Grimes	Deputy Athletic Director / SWA	2nd Year		Purdue - '05
Amie Anthrop	Director of Operations	1st Year		Southern Indiana - '11
Chaz Calloway	Director of Strength & Conditioning	1st Year		Cincinnati - '14
Jessica Lipsett	Director Athletic Training and Physical Therapy	21st Year		Illinois - '00
Lakan Hasser-Smith	Director Video/Recruiting Assistant	2nd Year		Marian - '16
Abby Downard	Graduate Assistant	1st Year		Marian - '21

\*Served on staff from 2014-16

Amiyah Reynolds	ah-MY-yah	Alaina Harper	ah-LAY-na
Rashunda Jones	ra-SHUN-da	Katie Gearlds	soft g (like the first name)
Mila Reynolds	MEE-la	Kelly Komara	kom-AIR-la

**Associate Head Coach Kelly Komara**

**Alma Mater:** Purdue '02 | **Season at Purdue/Career:** 1st/3rd/20th  
**Select Experience:** Marquette - Assistant (22-23), Vanderbilt - Associate Head Coach (19-21), Vanderbilt - Assistant (17-18), Purdue - Assistant (15-16)

**Select Highlights:** Named a Top-20 Assistant Coach by The Athletic, 1999 National Champion, 2002 Big Ten Defensive Player of the Year, 3-time All-Big Ten selection, 4 NCAA Tournaments, 2 National Championship Games, 5 Big Ten titles, father has been an Indiana high school football coach for over 50 years

**Assistant Coach Mark Stephens**

**Alma Mater:** Morehead State '02 | **Season at Purdue/Career:** 1st/7th  
**Select Experience:** Toledo - Assistant (20-23), Xavier - Assistant (17-19), Crispus Attucks - Head Coach (2012-16), Indiana Elite - Club Director

**Select Highlights:** Helped Toledo to three MAC titles and an NCAA Appearance, mentored numerous Indiana Miss Basketball winners during his AAU coaching career

**Assistant Coach Alex Guyton**

**Alma Mater:** Purdue '12 | **Season at Purdue/Career:** 5th/7th  
**Select Experience:** Purdue - Director of Player Development (19-21), Eastern Illinois - Assistant (17-19), Carmel HS - Assistant (14-17)

**Select Highlights:** Played 124 games won a pair of Big Ten Tournament titles, 3 NCAA Tournaments and an Elite Eight, coached Michigan's Amy Dilk while at Carmel


**1 AMIYAH REYNOLDS**

**2 RASHUNDA JONES**

**3 JAYLA SMITH**

**10 JEANAE TERRY**

**11 MCKENNA LAYDEN**

**15 MILA REYNOLDS**

**20 MARY ASHLEY STEVENSON**

**21 EMILY MONSON**

**23 ABBEY ELLIS**

**31 SOPHIE SWANSON**

**32 ALAINA HARPER**

**33 MADISON LAYDEN**

**34 CAITLYN HARPER**

**KATIE GEARLDS**

**KELLY KOMARA**

**MARK STEPHENS**

**ALEX GUYTON**



# KATIE GEARLDS

HEAD COACH | 3RD SEASON AT PURDUE | 11TH SEASON OVERALL | PURDUE '07

@katiegearlds4  
@katiegearlds4

Year	Overall	BIG	Non-Con.	BIG Tourney	NCAAs	WNIT	Home	Road	Neutral	vs. Top-25	Unranked
2021-22	17-15	7-11	9-2	0-1	-	1-1	11-6	5-7	1-2	1-6	16-9
2022-23	19-11	9-8	9-1	1-1	0-1	-	10-4	6-4	3-2	2-6	17-5
2023-24	11-15	4-11	7-4	-	-	-	9-5	2-8	0-2	0-5	11-10
<b>Totals</b>	<b>47-41</b>	<b>20-30</b>	<b>25-7</b>	<b>1-2</b>	<b>0-1</b>	<b>1-1</b>	<b>30-15</b>	<b>13-19</b>	<b>4-7</b>	<b>3-18</b>	<b>44-23</b>
<b>Pct.</b>	<b>.534</b>	<b>.400</b>	<b>.781</b>	<b>.333</b>	<b>.000</b>	<b>.500</b>	<b>.667</b>	<b>.407</b>	<b>.364</b>	<b>.142</b>	<b>.656</b>

## AN IMPACT BACK IN WEST LAFAYETTE

- In two seasons back at her alma mater, Katie Gearlds has guided the Boilermakers back to the postseason twice.
- After posting a 19-win campaign in 2022-23, Gearlds joined the elite company of Carolyn Peck and Lin Dunn as the only Boilermaker head coaches to post win improvements in each of their first two campaigns.
- The Boilermakers made their return to the NCAA Tournament for the first time since 2017 with a bid to the First Four last year.
- Prior to her arrival, Purdue had dropped its last 19 games against a ranked opponent. In two seasons, Gearlds has racked up three, including the program's first AP top-5 win in a true road game against No. 2 Ohio State in 2022-23.
- Katie Gearlds reached the 250-win plateau for her career against Harvard, reaching the feat in 315 career games.

## HITTING THE RECRUITING TRAIL

- The 2023-24 freshmen made up Gearlds' first true recruiting class through an entire cycle.
- Landing five signees in November of 2022, the 2023 class ranked No. 21 in the nation, before Gearlds welcomed in top-50 player Amiyah Reynolds to the program the following May.
- A former Indiana Miss Basketball, Gearlds has placed a major emphasis on recruiting and ensuring the best talent in the state comes to Purdue.
- Gearlds has also found success in the transfer portal with Jeanae Terry and Abbey Ellis garnering All-Big Ten nods, while Lasha Petree and Caitlyn Harper powered the offense in 2022-23.

## THE JOB SO FAR

- Gearlds guided the Boilermakers on another step forward in 2022-23, making the NCAA Tournament for the first time since 2017.
- After having a full offseason to prepare, the Boilermakers went 19-11 and tallied a pair of ranked wins over No. 22 Illinois and No. 2 Ohio State.
- The Katie Gearlds era started sooner than expected in 2021-22, when she took over the program a mere 47 days prior to the season opener.
- Purdue finished 17-15 on the year, winning 10 more games than the previous campaign. It was the best win improvement by first-year head coach at Purdue and the third best in program history.
- The Boilermakers finished 10-2 in the non-conference, marking the second-best clip by a first-year head coach.
- The Boilermakers reached the postseason for the first time since 2017-18, ending the campaign in the second round of the WNIT.

## COACHING EXPERIENCE

- Spent eight seasons taking Marian University winning back-to-back NAIA National Championships in 2016 and 2017.
- Went 228-50 record, an 82% clip with the Knights.
- Three-time NAIA National Coach of the Year, won 10 total Crossroads League titles and made seven appearances in the NAIA Tournament.
- Guided 12 WBCA NAIA All-America selections, compared to just five in the first 37 years of the program's existence.

## PROFESSIONAL CAREER

- Played professionally over six seasons
- Spent three seasons in the WNBA with the Seattle Storm,
- Was taken with the seventh overall pick in the 2007 WNBA Draft, the highest selection ever from Purdue
- Two of her closest teammates and friends over the years are WNBA legend Sue Bird and fellow WNBA great and New Orleans Pelicans Vice President of Basketball Operations Swin Cash.
- Gearlds is the highest draft pick in Purdue history, going seventh overall to the Seattle Storm in 2007.

## ALL-AMERICAN AT PURDUE CAREER

- Was a three-year starter from 2004-07.
- Ranks fourth in program history with 1,974 points and was the ninth fastest to join the 1,000-point club.
- Named a Legend of Mackey Arena for the 50th season.
- Won two Big Ten Tournament titles and never missed the NCAA Tournament with Gearlds in the squad
- Reached three Sweet 16s and one Elite Eight.
- Set the Purdue single-game record with 41 points at Wisconsin on Feb. 18, 2007, and scored 707 points to tie the single-season program record.
- 2007 Third Team AP All-America WBCA Honorable Mention
- Four-time All-Big Ten and the 2004 Big Ten Freshman of the Year.
- Earned a bachelor's degree in sociology and minored in psychology and communications from Purdue in 2007.

## ONE-OF-A-KIND PREP CAREER

- Named the Indiana Miss Basketball in 2003.
- Amassed 2,521 career points, good for sixth in IHSAA history.
- Averaged 30.1 points, 9.4 rebounds, 5.4 assists and 5.1 steals per game to lead Beach Grove High School to the 2003 Class 3A State Championship.
- Nike/WBCA All-America, First Team All-State and the Gatorade Indiana Player of the Year.
- A McDonald's All-American, was named the MVP of the McDonald's All-America Game the same season as a young talent from Akron, Ohio - LeBron James.

## INSPIRED BY GREATNESS

- Gearlds has a deep bench of basketball legends who have touched and continue to influence her career.
- One of the few people who can say they've worked with two G.O.A.T.s, Gearlds was the MVP of the 2003 McDonald's All-America Game with LeBron James.
- Sue Bird, her teammate with the Storm and a mentor over the last 15 years, inspired Gearlds to go into coaching.
- She also shared the court in Seattle with Swin Cash (V.P. New Orleans Pelicans), Adia Barnes (Arizona head coach) and Lauren Jackson (owner Melbourne Boomers).
- She competed against Chris Paul in the skills challenge ahead of the 2003 McDonald's All-America Game.

## AN INDIANA LEGEND

- One of the best products of Indiana basketball, Gearlds claimed a state title, a Big Ten championship and a national title with programs from the Crossroads State.
- Named Indiana Miss Basketball as a senior at Beech Grove in 2003, Gearlds guided the Hornets to a 3A state championship, setting a state record across all classes with 33 points in the final. Today, she ranks 11th in state history with 2,521 career points.
- As a Boilermaker from 2003-07, Gearlds reached the NCAA Tournament four times, won two Big Ten Tournament titles, sits fourth in Purdue history with 1,974 career points and holds the record for points in a season with 707 with Stephanie White.
- Following a six-year professional career, Gearlds took over the reins at Marian in Indianapolis, posting a 227-49 record over eight years, winning three NAIA Coach of the Year honors and claiming two national championships.

GEARLDS' YEAR-BY-YEAR					
Year	School	Overall	Conf.	Post.	Rank
2013-14	Marian	16-16	8-10	-	-
2014-15	Marian	28-6	14-4	NAIA R32	-
2015-16	Marian	32-6	16-2	NAIA Champ	No. 1
2016-17	Marian	35-3	17-1	NAIA Champ	No. 1
2017-18	Marian	32-3	17-1	NAIA R16	No. 8
2018-19	Marian	27-7	16-2	NAIA R32	No. 17
2019-20	Marian	31-3	16-2	NAIA R16	No. 13
2020-21	Marian	27-6	16-0	NAIA R32	No. 9
2021-22	Purdue	17-15	7-11	WNIT 2nd Rd	-
2022-23	Purdue	19-11	9-8	NCAA First Four	-
2023-24	Purdue	11-15	4-11	-	-
11th Year		275-91	20-30		-

GEARLDS' TIMELINE	
2021-Present	Head Coach, Purdue
2013-21	Head Coach, Marian
2013	Toyota Huelva, Spain
2011-12	Orion Ibaizabal Galdakao, Portugal
2010	FEA Neas Halkindonas, Greece
2008	Kosit Kosice, Slovakia
2007-09	Seattle Storm, WNBA
2003-07	All-America Guard, Purdue
1999-03	All-America Guard, Beech Grove High School

GEARLDS IN THE PURDUE RECORD BOOK			
Stat	Rank	Total	Year/Game
Single Game Points	1	41	Wisconsin, 2/18/07
Season Points	T1	707	2006-07
Career Points	4	1,974	2004-07
Career Average	4	14.8	2004-07
Season 10+ Point Games	3	33	2006-07
Career 10+ Point Games	4	102	2004-07
Season 30+ Point Games	2	4	2006-07
Career 30+ Point Games	2	6	2004-07
Season Field Goals	2	250	2006-07
Career Field Goals	3	711	2004-07
Season 3-Pointers	T1	88	2006-07
Career 3-Pointers	3	238	2004-07
Season Asst/TO	1	2.57	2005-06
Career Asst/TO	T2	1.64	2004-07
Season Minutes	1	1,359	2006-07
Career Minutes	2	4,475	2004-07

**KG ERA BESTS****MOST POINTS SCORED**

1.	101	vs. Denver	12/12/21
2.	100	vs. SIUE	11/17/22
3.	95	vs. Southern Indiana	11/26/23
4.	90	vs. Murray St.	11/13/22
5.	89	vs. Illinois	1/20/22
	89	vs. Wisconsin	12/30/23

**MOST POINTS ALLOWED**

1.	96	vs. Iowa	1/10/24
2.	96	at Indiana	2/11/24
3.	92	at UCLA	11/6/23
4.	86	vs. Maryland	12/08/21
5.	83	vs. Indiana	02/19/23

**FEWEST POINTS ALLOWED**

1.	48	at Northwestern	2/14/24
2.	50	vs. Southern	11/12/23
	50	vs. Wisconsin	12/23/30
4.	51	vs. Illinois State	12/11/22
5.	52	vs. Florida	11/20/23
	52	at Illinois	1/26/23
	52	vs. Georgia Tech	12/1/21

**LARGEST MARGIN OF VICTORY**

1.	42	vs. SIUE	11/17/22
2.	39	vs. Wisconsin	12/30/23
3.	38	vs. Southern Indiana	11/26/23
4.	33	vs. North Ala.	12/21/21
	33	vs. Denver	12/12/21

**MOST FIELD GOALS MADE**

1.	38	vs. Denver	12/12/21
	38	vs. Southern Indiana	11/26/23
3.	37	vs. North Ala.	12/21/21
4.	35	2x last vs. Wisconsin	12/30/23

**HIGHEST FIELD GOAL PERCENTAGE**

1.	.633	vs. Denver	12/12/21
2.	.607	vs. Harvard	11/24/22
3.	.576	vs. Southern Indiana	11/26/23
4.	.569	vs. Southern Ill.	3/16/22
5.	.565	vs. SIUE	11/17/22

**LOWEST FIELD GOAL PERCENTAGE ALLOWED**

1.	.275	vs. Minnesota	1/21/23
2.	.281	vs. Southern	11/12/23
3.	.293	vs. Illinois St.	12/11/22
4.	.317	vs. Indiana St.	11/20/22
5.	.318	vs. North Ala.	12/21/21

**MOST 3-POINTERS MADE**

1.	15	vs. Illinois	1/20/22
2.	13	vs. Ohio St.	1/29/23
	13	vs. Denver	12/12/21
4.	12	3x last vs. Florida St.	11/25/22

**HIGHEST 3-POINT PERCENTAGE**

1.	.652	vs. Illinois	1/20/22
2.	.600	vs. St. John's (NY)	3/16/23
3.	.500	vs. Denver	12/12/21
	.500	vs. Indiana State	12/20/23
5.	.474	3x last vs. S. Indiana	11/26/23

**FEWEST 3-POINTERS ALLOWED**

1.	0	vs. Rutgers	1/2/22
	0	vs. Iowa	1/13/22
3.	1	vs. Marshall	11/22/21
	1	vs. Illinois	2/17/22
5.	2	vs. West Virginia	11/25/21
	2	vs. Michigan St.	1/9/22

**LOWEST 3-POINT PERCENTAGE ALLOWED**

1.	.000	vs. Rutgers	1/2/22
	.000	vs. Iowa	1/13/22
3.	.059	vs. Marshall	11/22/21
4.	.077	vs. Illinois	2/17/22
5.	.111	vs. Michigan St.	1/9/22

**MOST FREE THROWS MADE**

1.	26	vs. Northwestern	2/12/23
2.	25	vs. SIUE	11/17/22
3.	22	vs. Western Ky.	11/10/21
4.	21	vs. Marshall	11/22/21
	21	vs. Southern	11/12/23

**MOST ASSISTS**

1.	26	vs. North Ala.	12/21/21
2.	25	at Northwestern	2/14/24
	25	vs. Murray St.	11/13/22
4.	24	vs. Western Mich.	11/14/21
	24	vs. Southern Indiana	11/26/23

**FEWEST ASSISTS ALLOWED**

1.	5	vs. Southern	11/12/23
	5	vs. Florida	11/20/23
3.	6	vs. Marshall	11/22/21
4.	7	3x last vs. Syracuse	11/30/22

**MOST REBOUNDS**

1.	50	vs. Michigan St.	12/5/22
2.	47	vs. North Ala.	12/21/21
3.	46	vs. Valparaiso	12/3/23
	46	at Northwestern	2/14/24
5.	45	vs. Illinois	2/17/22

**MOST DEFENSIVE REBOUNDS**

1.	39	vs. Michigan St.	12/5/22
2.	38	vs. Valparaiso	12/3/23
3.	37	vs. Southern	11/12/23
4.	35	vs. Syracuse	11/30/22
5.	34	vs. Southern Ill.	3/16/22
	34	vs. North Ala.	12/21/21

**MOST OFFENSIVE REBOUNDS**

1.	18	vs. Illinois	2/17/22
	18	vs. Miami (OH)	12/19/21
3.	17	vs. West Virginia	11/25/21
4.	16	vs. Marshall	11/22/21
5.	15	vs. Wisconsin	3/2/23
	15	vs. Nebraska	1/30/22

**MOST STEALS**

1.	16	vs. Wisconsin	1/1/23
2.	14	vs. SIUE	11/17/22
3.	13	vs. Northwestern	1/14/23
	13	vs. Denver	12/12/21
	13	at Northwestern	2/14/24

**MOST BLOCKS**

1.	9	vs. Iowa	3/3/23
	9	vs. Indiana	2/6/22
3.	8	vs. Northwestern	2/24/22
	8	vs. Illinois St.	11/17/21
5.	7	vs. Rutgers	2/9/23

**FEWEST TURNOVERS**

1.	7	vs. Murray State	11/13/22
2.	8	vs. Minnesota	1/21/23
	8	at Texas A&M	12/21/22
4.	9	vs. Texas A&M	11/16/23
	9	vs. Minnesota	1/27/22
	9	at Michigan	1/24/22

**MOST POINTS SCORED BY A PLAYER**

1.	31	Lasha Petree, vs. Syracuse	11/30/22
2.	29	Abbey Ellis, vs. SIUE	11/17/22
3.	27	Brooke Moore, vs. Southern Ill.	3/16/22
4.	26	Abbey Ellis, vs. Ohio St.	1/29/23
	26	Lasha Petree, vs. Minnesota	2/26/23

**MOST FIELD GOALS MADE BY A PLAYER**

1.	13	Lasha Petree, vs. Syracuse	11/30/22
2.	10	Brooke Moore, vs. Southern Ill.	3/16/22
	10	Lasha Petree, vs. Minnesota	2/26/23
4.	9	9x last Abbey Ellis, vs. Texas A&M	11/16/23

**MOST 3-POINTERS MADE BY A PLAYER**

1.	7	Cassidy Hardin, vs. Denver	12/12/21
2.	6	Abbey Ellis, vs. Illinois	1/20/22
	6	Cassidy Hardin, vs. Florida St.	11/27/21
	6	Brooke Moore, vs. Maryland	12/8/21
5.	5	7x last Sophie Swanson vs. MSU	2/21/24

**MOST FREE THROWS MADE BY A PLAYER**

1.	9	Abbey Ellis, vs. Western Ky.	11/10/21
	9	Jeanae Terry, vs. Miami (OH)	12/10/21
	9	Abbey Ellis, vs. Indiana State	12/20/23
	9	Mary Ashley Stevenson, vs. Illinois	2/5/24
5.	8	3x last Rashunda Jones, vs. Valpo	12/3/23

**MOST REBOUNDS BY A PLAYER**

1.	17	Jeanae Terry, vs. Wisconsin	2/13/22
	17	Jeanae Terry, vs. Illinois	2/17/22
3.	14	Jeanae Terry, vs. Illinois	1/26/23
4.	13	Jeanae Terry, vs. Ohio St.	12/5/21
	13	Jeanae Terry, vs. Harvard	11/24/22

**MOST ASSISTS BY A PLAYER**

1.	14	Jeanae Terry, vs. Illinois	2/5/24
2.	12	Jeanae Terry, vs. Minnesota	1/27/22
	12	Jeanae Terry, vs. Northwestern	2/24/22
	12	Jeanae Terry, vs. Indiana St.	11/20/22
	12	Jeanae Terry, vs. Wisconsin	12/30/23

**MOST STEALS BY A PLAYER**

1.	8	Jeanae Terry, vs. Penn St.	2/22/23
2.	6	Madison Layden, vs. Rutgers	2/20/22
3.	5	Abbey Ellis, vs. Western Mich.	11/14/21
	5	Jeanae Terry, vs. Nebraska	1/30/22
	5	Jeanae Terry, vs. Wisconsin	1/1/23
	5	Jeanae Terry, vs. Wisconsin	3/2/23

**MOST BLOCKS BY A PLAYER**

1.	4	Caitlyn Harper, vs. Marshall	11/10/22
	4	Caitlyn Harper, vs. Michigan	1/10/23
	4	Caitlyn Harper, at Michigan State	1/24/24
	4	Rickie Woltman, vs. Illinois St.	11/17/21
4.	3	9x last Rickie Woltman, vs. Iowa	3/3/23

**MOST POINTS ALLOWED BY A PLAYER**

1.	32	Naz Hillmon, at Michigan	1/24/22
2.	31	Makenna Marisa, Penn St.	2/9/22
3.	27	Monika Czinano, Iowa	1/13/22
	27	Lauren Van Kleunen, at Marquette	3/21/22
5.	26	5x last Caitlin Clark, vs. Iowa	1/10/24

**KG'S RECORD VS. OPPONENTS**

Illinois	4-0
Indiana	0-6
Iowa	0-4
Maryland	0-3
Michigan	0-2
Michigan State	2-3
Minnesota	2-2
Nebraska	0-4
Northwestern	3-2
Ohio State	1-2
Penn State	2-2
Rutgers	4-0
Wisconsin	3-2
<b>Big Ten</b>	<b>21-32</b>
Florida State	1-1
Georgia Tech	1-0
Notre Dame	0-1
Syracuse	1-0
<b>ACC</b>	<b>3-2</b>
Oklahoma State	1-0
West Virginia	0-1
<b>Big 12</b>	<b>1-1</b>
UCLA	0-1
<b>Pac-12</b>	<b>0-1</b>
Florida	0-1
Georgia	0-1
Texas A&M	2-0
<b>SEC</b>	<b>2-2</b>
Marquette	0-1
St. John's	0-1
<b>Big East</b>	<b>0-2</b>
Miami	1-0
Western Michigan	1-0
<b>MAC</b>	<b>2-0</b>
Illinois State	2-0
Indiana State	2-0
Murray State	1-0
Southern Illinois	1-0
Valparaiso	1-0
<b>Missouri Valley</b>	<b>7-0</b>
Denver	1-0
<b>Summit</b>	<b>1-0</b>
North Alabama	1-0
<b>ASUN</b>	<b>1-0</b>
Harvard	1-0
<b>Ivy</b>	<b>1-0</b>
Marshall	2-0
<b>Sun Belt</b>	<b>2-0</b>
Western Kentucky	1-0
<b>C-USA</b>	<b>1-0</b>
Southeast Missouri State	1-0
Southern Illinois Edwardsville	1-0
Southern Indiana	1-0
<b>Ohio Valley</b>	<b>3-0</b>
Southern	1-0
<b>SWAC</b>	<b>1-0</b>
Dayton	1-1
<b>A-10</b>	<b>1-1</b>



## TEAM GAME-BY-GAME COMPARISON

**P** |  | 12



# 2023-24 PURDUE WOMEN'S BASKETBALL GAME NOTES

## TEAM STATISTICS BREAKDOWN

All Games	Record	FG-FGA	FG%	3P-3PA	3%	FT-FTA	FT%	Off.	Def.	Tot.	Avg.	F	DQ	Ast.	TO	Blk.	Stl.	Pts.	Avg.
All Games	11-15	638-1530	.417	164-496	.331	325-416	.781	263	638	901	34.7	410	6	403	394	77	191	1765	679
		663-1560	.425	174-493	.353	305-397	.768	272	653	925	35.6	438	9	382	397	95	196	1805	69.4
Home	9-5	378-846	.447	97-273	.355	200-259	.772	155	352	507	36.2	228	3	249	182	39	101	1053	75.2
		325-812	.400	95-271	.351	180-232	.776	136	329	465	33.2	245	8	187	223	55	89	925	66.1
Away	2-8	221-570	.388	59-182	.324	105-134	.784	85	238	323	32.3	154	2	141	179	36	78	606	60.6
		294-626	.470	73-197	.371	102-137	.745	108	272	380	38.0	164	1	181	145	36	88	763	76.3
Neutral	0-2	39-114	.342	8-41	.195	20-23	.870	23	48	71	35.5	28	1	13	33	2	12	106	53.0
		44-122	.361	6-25	.240	23-28	.821	28	52	80	40.0	29	0	14	29	4	19	117	58.5
Won	11-0	10-667	.465	82-218	.376	161-216	.745	129	312	441	40.1	172	1	212	155	36	94	863	78.5
		236-659	.358	52-183	.284	122-165	.739	120	246	366	33.3	197	5	116	191	39	81	646	58.7
Lost	0-15	306-802	.382	74-255	.290	157-193	.813	123	300	423	30.2	221	5	176	224	39	93	843	60.2
		402-838	.480	115-287	.401	172-218	.789	143	380	523	37.4	230	4	250	193	50	110	1091	77.9

Big Ten	Record	FG-FGA	FG%	3P-3PA	3%	FT-FTA	FT%	Off.	Def.	Tot.	Avg.	F	DQ	Ast.	TO	Blk.	Stl.	Pts.	Avg.
All Games	4-11	379-907	.418	92-279	.330	175-224	.781	156	345	501	33.4	247	5	245	216	43	108	1025	68.3
		408-897	.455	118-312	.378	186-238	.782	143	385	528	35.2	243	7	256	214	58	102	1120	74.7
Home	3-5	211-499	.423	48-148	.324	104-133	.782	96	173	269	33.6	132	3	133	95	18	52	574	71.8
		205-468	.438	66-169	.391	108-131	.824	78	200	278	34.8	132	6	133	119	38	39	584	73.0
Away	1-6	168-408	.412	44-131	.336	71-91	.780	60	172	232	33.1	115	2	112	121	25	56	451	64.4
		203-429	.473	52-143	.364	78-107	.729	65	185	250	35.7	111	1	123	95	20	63	536	76.6

Non-Conference Record	Record	FG-FGA	FG%	3P-3PA	3%	FT-FTA	FT%	Off.	Def.	Tot.	Avg.	F	DQ	Ast.	TO	Blk.	Stl.	Pts.	Avg.
All Games	7-4	259-623	.416	72-217	.332	150-192	.781	107	293	400	36.4	163	1	158	178	34	83	740	67.3
		255-663	.385	56-181	.309	119-159	.748	129	268	397	36.1	195	2	126	183	37	94	685	62.3

Current Streak Record	Record	FG-FGA	FG%	3P-3PA	3%	FT-FTA	FT%	Off.	Def.	Tot.	Avg.	F	DQ	Ast.	TO	Blk.	Stl.	Pts.	Avg.
Overall	0-2	44-120	.367	14-42	.333	22-26	.846	16	47	63	31.5	35	2	31	22	4	8	124	62.0
		50-119	.420	15-46	.326	30-37	.811	19	59	78	39.0	33	2	35	25	8	6	145	72.5

Month	Record	FG-FGA	FG%	3P-3PA	3%	FT-FTA	FT%	Off.	Def.	Tot.	Avg.	F	DQ	Ast.	TO	Blk.	Stl.	Pts.	Avg.
November	3-3	137-332	.413	32-116	.276	83-102	.814	55	152	207	34.5	87	1	78	92	13	41	389	64.8
		136-359	.379	33-106	.311	69-93	.742	77	141	218	36.3	105	1	71	93	20	52	374	62.3
December	5-2	179-412	.434	56-138	.406	84-113	.743	79	199	278	39.7	107	1	119	117	28	61	498	71.1
		161-422	.382	31-108	.287	68-92	.739	71	170	241	34.4	118	2	79	119	24	54	421	60.1
January	1-7	197-481	.410	44-142	.310	103-133	.774	84	162	246	30.8	135	2	119	121	23	54	541	67.6
		234-466	.502	72-171	.421	110-137	.803	71	209	280	35.0	138	4	145	117	31	58	650	81.3
February	2-3	125-305	.410	32-100	.320	55-68	.809	45	125	170	34.0	81	2	87	64	13	35	337	67.4
		132-313	.422	38-108	.352	58-75	.773	53	133	186	37.2	77	2	87	68	20	32	360	72.0
March																			

Ranked/UR	Record	FG-FGA	FG%	3P-3PA	3%	FT-FTA	FT%	Off.	Def.	Tot.	Avg.	F	DQ	Ast.	TO	Blk.	Stl.	Pts.	Avg.
vs. Ranked	0-6	129-335	.385	30-103	.291	69-84	.821	50	111	161	26.8	91	0	72	95	17	39	357	59.5
		185-350	.529	66-137	.482	68-83	.819	53	159	212	35.3	95	1	126	87	30	46	504	84.0
vs. Unranked	11-9	509-1195	.426	134-393	.341	256-332	.771	213	527	740	37.0	319	6	331	299	60	152	1408	70.4
		478-1210	.395	108-356	.303	237-314	.755	219	494	713	35.7	343	8	256	310	65	150	1301	65.1

5-Game	Record	FG-FGA	FG%	3P-3PA	3%	FT-FTA	FT%	Off.	Def.	Tot.	Avg.	F	DQ	Ast.	TO	Blk.	Stl.	Pts.	Avg.
1-5	2-3	103-273	.377	23-97	.237	65-79	.823	46	122	168	33.6	71	1	54	82	9	32	294	58.8
		115-299	.385	29-86	.337	58-79	.734	66	123	189	37.8	86	1	60	80	17	49	317	63.4
6-10	4-1	137-289	.474	41-100	.410	71-95	.747	50	157	207	41.4	70	0	92	78	21	42	386	77.2
		112-314	.357	24-84	.286	41-58	.707	54	117	171	34.2	90	1	51	76	12	33	289	57.8
11-15	3-2	129-307	.420	33-90	.367	64-84	.762	62	104	166	33.2	90	1	82	70	17	40	355	71.0
		130-289	.450	31-88	.352	70-85	.824	50	123	173	34.6	86	3	69	86	24	30	361	72.2
16-20	0-5	122-295	.414	31-88	.352	64-82	.780	53	105	158	31.6	81	1	75	88	13	35	339	67.8
		149-286	.521	45-105	.429	67-83	.807	38	124	162	32.4	87	2	100	74	20	45	410	82.0
21-25	2-3	125-305	.410	28-98	.286	54-69	.783	41	124	165	33.0	81	3	85	61	15	38	332	66.4
		132-309	.427	38-107	.355	58-78	.744	55	139	194	38.8	78	2	86	68	16	34	360	72.0
26-30	0-1	22-61	.361	8-23	.348	7-7	1.000	11	26	37	37.0	17	0	15	15	2	4	59	59.0
		25-63	.397	7-23	.304	11-14	.786	9	27	36	36.0	11	0	16	13	6	5	68	68.0
31-35																			
36-40																			

Postseason	Record	FG-FGA	FG%	3P-3PA	3%	FT-FTA	FT%	Off.	Def.	Tot.	Avg.	F	DQ	Ast.	TO	Blk.	Stl.	Pts.	Avg.
Overall																			
BIG Tourney																			
NCAA																			



## SCORING BY QUARTERS

 PURDUE WHEN

**P** |  | 14





# 2023-24 PURDUE WOMEN'S BASKETBALL GAME NOTES

## TEAM HIGHS & LOWS

Stat	Purdue High	Purdue Low	Opp. High	Opp. Low
Points	95 Southern Ind. (11/26/2023)	39, at Notre Dame (12/17/2023)	97, at Michigan State (1/24/2024)	48 at Northwestern (02/14/2024)
Field Goals Made	35, vs. Wisconsin (12/30/2023)	14, at Notre Dame (12/17/2023)	37, at Michigan State (1/24/2024)	16 Southern U. (11/12/2023)
Field Goal Attempts	71, vs. Illinois (2/5/2024)	50 at UCLA (11/06/2023)	75, vs. Illinois (2/5/2024)	49 vs Indiana (01/21/2024)
Field Goal Percentage	.576 (34-59) Southern Ind. (11/26/2023)	.246 (14-57), at Notre Dame (12/17/2023)	.590 (36-61) at Indiana (2/11/2024)	.200 (4-20) 2x at Northwestern (02/14/2024)
3-Pointers Made	11, vs. Indiana State (12/20/2023)	2 vs Florida (N) (11/20/2023)	15, 2x last vs Indiana (01/21/2024)	2 2x last vs. SEMO (12/6/2023)
3-Pointers Attempted	26, at Northwestern (2/14/2024)	13, 3x last at Indiana (2/11/2024)	33, vs. Iowa (1/10/2024)	7 vs. SEMO (12/6/2023)
3-Point Percentage	.500 (11-22), vs. Indiana State (12/20/2023)	.091 (2-22) vs Florida (N) (11/20/2023)	.652 (15-23) vs Indiana (01/21/2024)	.222 (2-9) vs Georgia (N) (11/22/2023)
Free Throws Made	23, at Penn State (1/18/2024)	5, at Maryland (1/14/2024)	19, vs. Nebraska (2/17/2024)	4 at Dayton (12/1/2023)
Free Throws Attempted	27, at Penn State (1/18/2024)	7, 2x last vs. Michigan State (2/21/2024)	23, vs. Nebraska (2/17/2024)	5 at Dayton (12/1/2023)
Free Throw Percentage	1.000 (7-7) vs. Michigan State (2/21/2024)	.583 (7-12) at Northwestern (02/14/2024)	.923 (12-13) vs Florida (N) (11/20/2023)	.583 (7-12) at Minnesota (12/10/2023)
Rebounds	46, 2x last at Northwestern (2/14/2024)	21 at Indiana (2/11/2024)	47, vs. Illinois (2/5/2024)	24, vs. Wisconsin (12/30/2023)
Assists	25 at Northwestern (2/14/2024)	5 vs Florida (N) (11/20/2023)	29 at UCLA (11/06/2023)	5 2x last vs Florida (N) (11/20/2023)
Steals	13 at Northwestern (2/14/2024)	3, vs. Rutgers (1/2/2024)	15 vs Georgia (N) (11/22/2023)	1, vs. Nebraska (12/1/2023)
Blocks	6 at Dayton (12/1/2023)	1 4x last vs Indiana (01/21/2024)	8, at Notre Dame (12/17/2023)	1, 2x last, at Maryland (1/14/2024)
Turnovers	21 3x last, at Notre Dame (12/17/2023)	7, vs. Nebraska (2/17/2024)	21, vs. Wisconsin (12/30/2023)	8 at Minnesota (12/10/2023)
Fouls	21, vs. Indiana State (12/20/2023)	11 2x last vs Indiana (01/21/2024)	25, at Penn State (1/18/2024)	11 vs. Michigan State (2/21/2024)

## INDIVIDUAL HIGHS

Stat	Purdue Ind. High	Opponent Ind. High
Points	28, Abbey Ellis, vs. Indiana State (12/20/2023)	26, Caitlin Clark, vs. Iowa (1/10/2024)
Field Goals Made	9, 2x last Caitlyn Harper, vs. SEMO (12/6/2023)	10, 2x last Kendall Bostic, vs. Illinois (2/5/2024)
Field Goals Attempted	21, Abbey Ellis vs. Michigan State (2/21/2024)	20, Hannah Hidalgo, at Notre Dame (12/17/2023)
3-Pointers Made	5, 2x last Sophie Swanson vs. Michigan State (2/21/2024)	6, 3x last Sara Scalia vs Indiana (01/21/2024)
3-Pointers Attempted	10, Madison Layden at Northwestern (2/14/2024)	14, Caitlin Clark, vs. Iowa (1/10/2024)
Free Throws Made	10, Rashunda Jones, at Penn State (1/18/2024)	11, Destiny Adams, vs. Rutgers (1/2/2024)
Free Throws Attempted	12, Rashunda Jones, at Penn State (1/18/2024)	11, Destiny Adams, vs. Rutgers (1/2/2024)
Rebounds	15, 2x last Jeanae Terry vs. Michigan State (2/21/2024)	21, Alexis Markowski, vs. Nebraska (2/17/2024)
Assists	14, Jeanae Terry, vs. Illinois (2/5/2024)	11, DeeDee Hageman vs. Michigan State (2/21/2024)
Steals	5, Abbey Ellis, vs. Iowa (1/10/2024)	4, 3x last Raeven Raye-Redmond, vs. Valparaiso (12/3/2023)
Blocks	4, 2x last Caitlyn Harper, at Michigan State (1/24/2024)	6, 2x last Yarden Garzon vs Indiana (01/21/2024)

## RESULTS/LEADERS

Date	P / O	Opponent	W/L	Score	High Scorer	High Rebounds	High Assists	High Steals	High Blocks	Attend
N6	-/4	at UCLA	L	92-49	10, Ellis/Harper	7, Terry	4, Terry	1, 5 tied	1, Harper/Stevenson	2,157
N12	-/-	Southern	W	67-50	21, Layden	11, Terry	7, Terry	3, Ellis/Layden	1, Stevenson/Jones	5,002
N16	-/RV	Texas A&M	W	72-58	20, Jones/Ellis	11, Harper	10, Terry	3, Terry	1, 3 tied	5,223
N20	Bahamas	vs. Florida	L	52-49	14, Ellis	6, Stevenson	2, Terry	3, Ellis	1, Stevenson	437
N22	Bahamas	vs. Georgia	L	65-57	14, Layden	6, Ellis	4, Terry	2, Harper	1, Harper	278
N26	-/-	Southern Indiana	W	95-57	19, Ellis	6, 3 tied	8, Terry	3, Terry	1, 4 tied	3,683
D1	-/-	at Dayton	W	67-59	21, Ellis	8, Terry	4, Terry	3, Harper	2, Terry	3,250
D3	-/-	Valparaiso	W	83-56	22, Jones	10, Stevenson	4, 3 tied	3, Layden	2, Stevenson	5,305
D6	-/-	SEMO	W	83-57	22, Harper	10, Terry	11, Terry	2, Ellis/Layden	1, 4 tied	3,412
D10	Big Ten	at Minnesota	L	60-58	17, Layden	15, Terry	9, Terry	3, Ellis	2, Harper	3,834
D17	-/14	at Notre Dame	L	76-39	8, Ellis	6, Stevenson	2, Ellis, Layden	2, Ellis	1, 3 tied	9,149
D20	-/-	Indiana State	W	79-63	28, Ellis	8, Stevenson	5, Terry	4, Ellis	1, 5 tied	7,177
D30	Big Ten	Wisconsin	W	89-50	16, Harper	12, Terry	9, Terry	3, Terry/Layden	2, Layden	5,540
J2	Big Ten	Rutgers	W	77-76	19, Layden	10, Terry	5, Terry	2, Terry	1, Ellis	3,263
J10	Big Ten	Iowa	L	96-71	15, Ellis	6, Layden	6, Ellis	5, Ellis	4, Harper	14,876
J14	Big Ten	at Maryland	L	88-66	14, Harper	5, Terry	6, Terry	2, Terry/Layden	1, Harper/Layden	7,231
J18	Big Ten	at Penn State	L	80-67	23, Jones	8, Harper	4, Terry	3, Terry	1, 3 tied	2,266
J21	Big Ten	Indiana	L	74-68	18, Harper	8, Terry	6, Terry	2, Stevenson/Terry	1, Harper	11,796
J24	Big Ten	at Michigan State	L	97-70	16, Ellis	8, Terry	8, Terry	2, Terry	4, Harper	3,096
J28	Big Ten	Ohio State	L	71-68	14, Ellis	8, Terry	5, Terry	2, Jones	2, Reynolds	7,132
J31	Big Ten	at Nebraska	L	68-54	15, Ellis	6, Terry	3, Layden	2, Reynolds	1, 4 tied	4,408
F5	Big Ten	Illinois	W (OT)	77-72	25, Stevenson	9, Stevenson/Terry	14, Terry	3, Terry	1, Smith/Harper	3,953
F11	Big Ten	at Indiana	L	95-62	16, Stevenson	7, Terry	5, Jones	2, Jones	1, 4 tied	13,304
F14	Big Ten	at Northwestern	W	74-58	17, Harper	12, Terry	11, Terry	4, Terry	1, 3 tied	1,949
F17	Big Ten	Nebraska	L	77-65	16, Stevenson, Ellis	6, Terry	11, Terry	3, Terry	1, Stevenson, Layden	5,205
F21	Big Ten	Michigan State	L	68-59	22, Ellis	15, Terry	7, Terry	3, Terry	2, Layden	3,856
F25	Big Ten	at Wisconsin								
F28	Big Ten	Penn State								
M3	Big Ten	at Michigan								

## LEADERBOARD

Led in Points	23-24	Career	Led in Rebounds	23-24	Career	Led in Assists	23-24	Career	Led in Steals	23-24	Career	Led in Blocks	23-24	Career
Abbey Ellis	13	32	Jeanae Terry	16	53	Jeanae Terry	22	72	Jeanae Terry	13	43	Madison Layden	12	29
Madison Layden	4	14	Madison Layden	1	10	Madison Layden	2	22	Madison Layden	5	36	Jayla Smith	7	25
Caitlyn Harper	6	10	Abbey Ellis	3	6	Abbey Ellis	2	7	Abbey Ellis	8	18	Caitlyn Harper	14	23
Rashunda Jones	3	3	Caitlyn Harper	2	5	Rashunda Jones	2	2	Jayla Smith	10	10	Jeanae Terry	4	15
Mary Ashley Stevenson	3	3	Mary Ashley Stevenson	5	5	Emily Monson	1	1	Caitlyn Harper	3	6	Abbey Ellis	3	8
Jayla Smith	2	2	McKenna Layden	1	1				Rashunda Jones	2	2	Mary Ashley Stevenson	8	8
			Rashunda Jones	1	1				Mary Ashley Stevenson	2	2	Rashunda Jones	2	2
									McKenna Layden	1	1	Mila Reynolds	2	2
									Mila Reynolds	1	1	Alaina Harper	2	2
												Sophie Swanson	1	1
												Emily Monson	1	1



## THE LAST TIME A PLAYER

### INDIVIDUAL SCORING

Scored 20 Points:	22, Abbey Ellis, vs. Michigan State (2/21/24)
Scored 30 Points:	31, Lasha Petree vs. Syracuse (11/30/22)
Scored 35 Points:	38, Brittany Rayburn at Minnesota (1/12/12)
Scored 40 Points:	41, Katie Gearlds at Wisconsin (2/18/07)
Scored 20 Points in Back-to-Back Games:	Lasha Petree 23 vs. Penn State (2/22/23), 26 at Minnesota (2/26/23)
Scored 20 Points in Three Straight Games:	Lasha Petree 23 vs. Indiana (2/19/23), 23 vs. Penn State (2/22/23) 26 at Minnesota (2/26/23)
Two Players w/ 20+:	20, Rashunda Jones and Abbey Ellis vs. Texas A&M (11/16/23)
Three Players w/ 20+:	Whitney Bays (24), KK Houser (21), Liza Clemons (20) & Courtney Moses (20) vs. Central Michigan (12/28/13)
Four Players w/ 20+:	Whitney Bays (24), KK Houser (21), Liza Clemons (20) & Courtney Moses (20) vs. Central Michigan (12/28/13)
Five Players in Double Figures:	Caitlyn Harper (16), Madison Layden (14), Jeanae Terry (13) Mary Ashley Stevenson (13), Abbey Ellis (12) vs. Wisconsin (12/30/23)
10+Points in 10 Straight Games:	10, Abbey Ellis (11/6/23-12/10/23)
10+Points in 20 Straight Games:	35, Shereka Wright (11/29/01 - 12/29/02)
10+Points in 30 Straight Games:	35, Shereka Wright (11/29/01 - 12/29/02)

### INDIVIDUAL DOUBLE-DOUBLES

Double-Double:	12 rebounds, 11 assists, Jeanae Terry at Northwestern (2/14/24)
Points-Rebounds:	13-12, Jeanae Terry vs. Wisconsin (12/30/23)
Points-Assists:	19-11 Karissa McLaughlin at Wisconsin (12/31/18)
Points-Steals:	27-12, Joy Holmes vs. Minnesota (1/13/89)
Points-Blocks:	12-11, Danielle Campbell vs. Butler (11/17/07)
Freshman:	14-10 reb, Mary Ashley Stevenson, vs. Valparaiso (12/3/23)
Non-Point:	12 reb, 11 asts, Jeanae Terry at Northwestern (2/14/24)
20-10 Game:	21 pts, 12 rebs, Ae'Rianna Harris vs. PSU (1/26/20)
30-10 Game:	30 pts, 10 reb, Stephanie White vs. Washington (3/14/98)
20-20 Game:	29 pts, 20 reb, Joy Holmes at Wisconsin (1/27/91)
Consecutive Double-Doubles:	2, Jeanae Terry (11/10-13/22)
in Three Straight Games:	4, Fatou Diagne, (1/18-1/31)
in Five Straight Games:	9, Whitney Bays (12/20/14 - 1/19/15)
Two Players with a Double-Double:	11 pts, 12 reb, Fatou Diagne, 15 pts, 10 reb, Ae'Rianna Harris, vs. Michigan State (3/5/20)
Three Players with a Double-Double:	Ae'Rianna Harris (14 pts, 17 rebs) & Tamara Farquhar (13 pts, 14 rebs), vs. Western Illinois (11/17/20)

### INDIVIDUAL TRIPLE-DOUBLES

Triple-Double:	10 pts, 11 rebs, 12 assts - Jeanae Terry - vs. Minnesota (1/27/22)
Before that	11 pts, 12 rebs, 10 assts - Jeanae Terry - vs. Miami (12/19/21)
Before that	12 pts, 11 rebs, 11 blks - Danielle Campbell - vs. Butler (11/17/07)
Before that	20 pts, 11 rebs, 10 assts - Stephanie White - vs. Indiana (1/22/99)

### INDIVIDUAL FIELD GOALS

Made 13 Field Goals:	13, Lasha Petree vs. Syracuse (11/30/22)
Made 15 Field Goals:	15, Shereka Wright at Michigan (2/17/02)
Attempted 20 Field Goals:	20 Lasha Petree at Minnesota (2/26/23)
Attempted 25 Field Goals:	25, KK Houser vs. Penn State (1/30/14)
Attempted 30 Field Goals:	33, MaChelle Joseph at Wisconsin (2/21/92)

### INDIVIDUAL 3-POINTERS

Made Six 3-Pointers:	6, Abbey Ellis at Illinois (1/20/22)
Made Seven 3-Pointers:	7, Cassidy Hardin vs. Denver (12/12/21)
Made Eight 3-Pointers:	9, Karissa McLaughlin vs. NU (2/17/19)
Attempted 12 3-Pointers:	12, Cassidy Hardin at Nebraska (1/30/22)
Attempted 13 3-Pointers:	14, Madison Layden vs. Ohio State (12/5/21)
Made a 3-Pointer in 20 Straight Games:	24, Madison Layden (12/9/20-11/17/21) 23, Cassidy Hardin (3/10/21-2/4/22)

### INDIVIDUAL FREE THROWS

Made 13 FTs:	14, Courtney Moses at Northwestern (1/26/12)
Made 15 FTs:	15, Ukari Figgs vs. Washington (3/14/98)
Attempted 16 FTs:	18, Brittany Rayburn vs. Gardner-Webb (12/21/09)
Attempted 18 FTs:	18, Brittany Rayburn vs. Gardner-Webb (12/21/09)
Attempted 20 FTs:	20, Shereka Wright at Northwestern (2/15/04)

### INDIVIDUAL STEALS

Grabbed Five Steals:	5, Abbey Ellis vs. Iowa (1/10/24)
Grabbed Six Steals:	8, Jeanae Terry vs. Penn State (2/22/23)
Grabbed Seven Steals:	8, Jeanae Terry vs. Penn State (2/22/23)
Grabbed Eight Steals:	8, Jeanae Terry vs. Penn State (2/22/23)

### INDIVIDUAL REBOUNDS

Grabbed 15 Rebounds:	15, Jeanae Terry, vs. Michigan State (2/21/24)
Grabbed 16 Rebounds:	17, Jeanae Terry vs. Illinois (2/17/22)
Grabbed 17 Rebounds:	17, Jeanae Terry vs. Illinois (2/17/22)
Grabbed 18 Rebounds:	18, Fatou Diagne vs. Penn State (1/31/21)
Grabbed 19 Rebounds:	19, Whitney Bays vs. Ohio State (1/25/15)
Grabbed 20 Rebounds:	20, Joy Holmes at Wisconsin (1/27/91)
Grabbed Eight Off. Rebounds:	9, Jeanae Terry at Wisconsin (2/13/22)
10+ Rebounds in Three Straight Games:	3, Ae'Rianna Harris (11/17/19-11/29/19)
Two Players with 10+ Rebounds in a Game:	Tamara Farquhar (14) & Ae'Rianna Harris (17) vs. Western Illinois (11/17/19)
Three Players 10+ Rebounds in a Game:	Bridget Perry (11), Whitney Bays (11) & Liza Clemons (13) vs. Northwestern (2/11/15)

### INDIVIDUAL ASSISTS

Dished Out 10 Assists:	11, Jeanae Terry at Northwestern (2/14/24)
Dished Out 11 Assists:	11, Jeanae Terry at Northwestern (2/14/24)
Dished Out 12 Assists:	14, Jeanae Terry vs. Illinois (2/5/24)
Dished Out 5+ Assists in Five Straight Games:	11 Jeanae Terry (11/20/22-12/29/22)
Dished Out 10+ Assists in Two Straight Games:	Jeanae Terry vs. Marshall (11/10/22) & Murray State (11/14/22)

### INDIVIDUAL BLOCKED SHOTS

Posted Five Blocks:	7, Ae'Rianna Harris vs. Michigan State (3/5/20)
Posted Six Blocks:	7, Ae'Rianna Harris vs. Michigan State (3/5/20)
Posted Seven Blocks:	7, Ae'Rianna Harris vs. Michigan State (3/5/20)
Posted Eight Blocks:	9, Ae'Rianna Harris at South Carolina (12/15/19)
Blocked 5+ Shots in Back-to-Back Games:	Ae'Rianna Harris vs. UT Martin, 5 (12/18/17), Saint Mary's, 5 (12/20/17) & at Rutgers, 7 (12/28/17)

### INDIVIDUAL MINUTES

Played a Complete Game:	45, Jeanae Terry vs. Illinois (2/5/24)
Played at Least 40 Minutes:	45, Jeanae Terry vs. Illinois (2/5/24)
Played Every Minute of an Overtime Game:	45, Jeanae Terry vs. Illinois (2/5/24)
Freshman Played 40 Minutes:	Madison Layden (40) vs. Rutgers (2/14/21)
Freshman Played a Complete Game:	Madison Layden (40) vs. Rutgers (2/14/21)
Played Consecutive Complete Games:	Kayana Traylor, 2 vs. Michigan (2/11/21)

### INDIVIDUAL FOULS

Technical Foul - Player:	Ra Shaya Kyle vs. Florida State (11/27/21)
Technical Foul - Coach:	Katie Gearlds, vs. Michigan State (2/21/24)
Fouled Out:	Jeanae Terry & Rashunda Jones vs. Nebraska (2/17/24)
Two Players Fouled Out:	Jeanae Terry & Rashunda Jones vs. Nebraska (2/17/24)
Three Players Fouled Out:	Tamara Farquhar, Ae'Rianna Harris & Dominique Oden vs. South Carolina (12/16/18 - 2 OT)

## THE LAST TIME PURDUE

## TEAM SCORING (GAME)

Won by 40+:	42 (80-38) at Ball State (11/7/18)
Won by 40+ (Big Ten):	43 (88-45) vs. Nebraska (1/26/17)
Lost by 20+:	33 (95-62) at Indiana (2/11/24)
Lost by 30+:	33 (95-62) at Indiana (2/11/24)
Scored 90+:	95 vs. (95-57) vs. Southern Indiana (11/26/23)
Scored 90+ (Big Ten):	91 at Penn State (12/20/20)
Scored 100+:	100 vs. SIUE (11/17/22)
Scored 100+ (Big Ten):	110 (110-51) at Michigan (3/12/94)
Scored 40 or Fewer:	39 at Notre Dame (12/17/23)
Scored 50 or Fewer:	39 at Notre Dame (12/17/23)
Scored 50 or Fewer and Won:	48 (48-46) at IUPUI (3/15/18)
Allowed 90+:	95 at Indiana (2/11/24)
Allowed 90+ (Big Ten):	95 at Indiana (2/11/24)
Allowed 100+:	100 at Ohio State (2/18/21)
Allowed 50 or Fewer:	48 at Northwestern (2/14/24)
Allowed 40 or Fewer:	38 at Ball State (11/7/18)

## TEAM SCORING (HALF)

Scored 60 in the First Half:	68 vs. Kent State (12/8/90)
Scored 60 in the Second Half:	60 vs. South Alabama (12/27/94)
Scored 50 Points or More:	50 (2nd), vs. Valparaiso (12/3/23)
Scored 15 Points or Less:	15 (1st) vs. No. 18 Indiana (1/14/21)
Scored 20 Points or Less:	18 (1st) at Notre Dame (12/17/23)
Allowed 50+:	254 (2nd) at Indiana (2/11/24)
Allowed 15 Points or Less:	15 (1st) at Wisconsin (2/13/22)
Allowed 20 Points or Less:	17 (1st) at Northwestern (2/14/24)

## TEAM SCORING (QUARTER)

Scored 30+:	35 (1st) vs. Southern Indiana (11/26/23)
Scored 25+:	29 (1st) vs. Indiana (1/21/24)
Scored 10 Points or Less:	8 (2nd) vs. Indiana (1/21/24)
Scored 5 Points or Less:	2 (3rd) vs. Indiana (2/5/23)
Allowed 30+:	31 (3rd) at Notre Dame (2/11/24)
Allowed 25+:	31 (3rd) at Indiana (2/11/24)
Allowed 10 Points or Less:	8 (2nd) at Northwestern (2/14/24)
Allowed 5 Points or Less:	2 (1st) at Wisconsin (2/13/22)

## TEAM SHOOTING

Shot 65% or Higher:	.735 (36-59) vs. Penn State (1/28/18)
Shot 60% or Higher:	.607 (34-56) vs. Harvard (11/24/22)
Shot 55% or Higher:	.576 (34-59) vs. Southern Indiana (11/26/23)
Shot 50% or Higher:	.515 (35-68) vs. Wisconsin (12/30/23)
Shot 30% or Lower:	.246 (14-57) at Notre Dame (12/17/23)
Shot 25% or Lower:	.246 (14-57) at Notre Dame (12/17/23)
Shot 35% or Lower and Won:	.308 (20-65) vs. Wisconsin (1/21/21)
Opponent Shot 55% or Higher:	.590 (36-61) at Indiana (2/11/24)
Opponent Shot 50% or Higher:	.590 (36-61) at Indiana (2/11/24)
Opponent Shot 30% or Lower:	.281 (16-57) vs. Southern (11/12/23)
Opponent Shot 25% or Lower:	.242 (16-66) at Rutgers (2/19/17)

## TEAM 3-POINT SHOOTING

Made 10+:	11, vs. Indiana State (12/20/23)
Made 12+:	15 at Illinois (1/20/22)
Made 15+:	15 vs. Central Michigan (12/28/13), at Illinois (1/20/22)
Made 0:	0 vs. Valparaiso (12/6/20)
Attempted 25+:	26 at Northwestern (2/14/24)
Attempted 30+:	30 at Rutgers (2/9/23)
Attempted Five or Less:	4 at UCLA (11/6/23)
Shot 50%+:	.500 (11-22) vs. Indiana State (12/20/23)
Shot 60%+:	.600 (6-10) vs. St. John's (3/16/23)

## TEAM FREE THROW SHOOTING

Made 25+:	26 vs. Southern (11/12/23)
Made 30+:	32 vs. DePaul (11/21/10)
Made Five or Less:	2 at Rutgers (2/9/23)
Made All Attempted:	7-7, vs. Michigan State (2/21/24)
Attempted 30+:	36 vs. SIUE (11/17/22)
Attempted 40+:	41 vs. Minnesota (1/18/04)
Attempted 10 or Less:	8 at Notre Dame (12/17/23)
Attempted Five or Less:	3 at Rutgers (2/9/23)

## TEAM REBOUNDS

Had 20+ Rebound Margin:	20 (44-24) vs. Wisconsin (12/30/23)
Had 25+ Rebound Margin:	30 (55-25) vs. USC Upstate (11/17/16)
Outrebounded by 20+:	24 (50-26) vs. No. 8 Maryland (2/25/21)
Outrebounded by 25+:	28 (28-56) at Notre Dame (12/29/13)

## TEAM ASSISTS

Had 25:	25 at Northwestern (2/14/24)
Had 30:	31 vs. Incarnate Word (12/10/15)
Had Five or Fewer:	5 at Indiana (3/6/21)

## TEAM TURNOVERS

Committed 10 or Fewer:	10, vs. Illinois (2/5/24)
Committed 20+:	21 at Notre Dame (12/17/23)
Forced 10 or Fewer:	10, at Michigan State (1/24/24)
Forced 20+:	26 vs. Wisconsin (1/1/23)

## TEAM CLOSE GAMES

One-Point Games:	W, 77-76, vs. Rutgers (1/2/24)
Two-Point or less Games:	L, 60-58 at Minnesota (12/10/2023)
Three-Point or less Games:	L, 52-49 vs. Florida (11/20/23)
Back-to-Back Games Decided by Three Points or Less:	L, 63-65 (OT) at Rutgers (1/16/19); W 56-53 vs. Indiana (1/20/19)
Last Second Shot to Win:	Jeanae Terry, 2, vs. Georgia Tech (12/1/21)
Lost on a Last Second Shot:	Jeanae Terry, 2, vs. Rutgers (1/3/22)
Opponent missed a Last Second Shot:	Shyanne Sellers, 3-pt vs. Maryland (12/8/22)
	Destiny Adams, 2-pt 77-76, vs. Rutgers (1/2/24)

## TEAM OVERTIME

Overtime Game:	W, 77-72 vs. Illinois (2/5/24)
Double Overtime Game:	L, 73-82 vs. South Carolina (12/16/18)
Triple Overtime Game:	W, 82-75 vs. Nebraska (2/2/12)
Consecutive Overtime Games:	W, 90-88 at Minnesota (1/22/15); L, 71-79 vs. Ohio State (1/25/15)

## TEAM COMEBACKS

Came Back from 10+ Down to Win:	18 - W, 57-55 vs. Wisconsin (3/2/23) (3/2/23; down 30-12 w/ 4:27 left in the 2nd)
Came Back from 15+ Down to Win:	18 - W, 57-55 vs. Wisconsin (3/2/23) (3/2/23; down 30-12 w/ 4:27 left in the 2nd)

## TEAM RANKED OPPONENTS

Beat a Ranked Team:	#2 Ohio State (1/29/23)
Beat Back-to-Back Ranked Team:	#22 Illinois, 62-52 (1/26/23)
Beat a Ranked Team on the Road:	#2 Ohio State (1/29/23)
Beat a Top-10 Ranked Team:	at #2 Ohio State (1/29/23)
Beat a Top-10 Ranked Team on the Road:	at #2 Ohio State (1/29/23)
Beat a Top-5 Ranked Team:	at #2 Ohio State (1/29/23)
Beat a Top-5 Ranked Team on the Road:	at #2 Ohio State (1/29/23)

## TRANSFERS' PURDUE BESTS

## Jeanae Terry's Purdue Highs

Points	17, vs. SIUE, 11/17/22
Rebounds	17, 2x last vs. Illinois, 2/17/22
Assists	14, vs. Illinois, 2/5/24
Steals	8, vs. Penn State, 2/22/23
Blocks	2, 3x last at Dayton, 12/1/23
Field Goals	7, 2x last, at Michigan State, 1/24/24
3-Pointers	2, vs. Michigan State, 3/3/22
Free Throws	9, vs. Miami (OH), 12/19/21
Minutes	45, vs. Illinois, 2/5/24

## Mila Reynolds' Purdue Highs

Points	7, at Nebraska, 1/31/24
Rebounds	5, vs. Valparaiso, 12/3/23
Assists	1, 3x last, at Nebraska, 1/31/24
Steals	1, at Nebraska, 1/31/24
Blocks	2, vs. Ohio State, 1/28/24
Field Goals	3, at Nebraska, 1/31/24
3-Pointers	1, 2x last, at Nebraska, 1/31/24
Free Throws	4, vs. Valparaiso, 12/3/23
Minutes	16, vs. Valparaiso, 12/3/23

## Abbey Ellis' Purdue Highs

Points	29, vs. SIUE, 11/17/22
Rebounds	9, vs. Southern Illinois, 3/16/22
Assists	11, vs. Western Michigan, 11/14/21
Steals	5, 2x last, vs. Iowa, 1/10/24
Blocks	1, 13x last, at Nebraska, 1/31/24
Field Goals	9, 3x last vs. Texas A&M, 11/16/23
3-Pointers	6, at Illinois, 1/20/22
Free Throws	9, 2x last Indiana State, 12/20/23
Minutes	44, vs. Indiana, 1/16/22

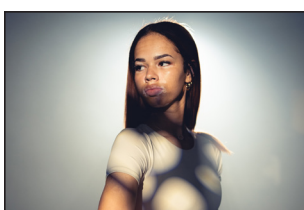
## Alaina Harper's Purdue Highs

Points	4, vs. SEMO, 12/6/23
Rebounds	2, 3x last, vs. Wisconsin, 12/30/23
Assists	
Steals	
Blocks	1, 2x last, at Nebraska, 1/31/24
Field Goals	2, vs. SEMO, 12/6/23
3-Pointers	
Free Throws	1, at Northwestern, 2/14/24
Minutes	14, vs. Southern Indiana, 11/26/23

## Caitlyn Harper's Purdue Highs

Points	22, vs. SEMO, 12/6/23
Rebounds	11, vs. Texas A&M, 11/16/23
Assists	4, 2x last, at Penn State, 1/18/24
Steals	3, at Dayton, 12/1/23
Blocks	4, 3x last, at Michigan State, 1/24/24
Field Goals	9, 2x last, vs. SEMO, 12/6/23
3-Pointers	2, 7x last, vs. SEMO, 12/6/23
Free Throws	8, vs. Nebraska, 1/18/23
Minutes	38, vs. Indiana, 1/21/24

## AMIYAH REYNOLDS 1



**Height** - 6-0 | **Position** - Guard | **Year** - Sophomore | **Major** - Business | **Hometown** - Indianapolis, Ind. | **High School** - Lawrence North  
**Instagram** - s.jaylasmith | **Twitter** - \_JaylaSmith | **TikTok** - s.jaylasmith

## REYNOLDS QUICK HITS

- No. 43 player in the nation by ESPN HoopGurlz, second highest signee in the Big Ten for the 2023 class
- Finished third as a finalist for the 2023 Indiana Miss Basketball
- Joined 2010 South Bend Washington graduate Skylar Diggins-Smith as the only Panthers to total over 1,000 points and 500 assists in a career
- Named an Indiana All-Star and All-State Supreme 15 as a junior and senior
- Went 95-18 over four years with the Panthers, with a 68-17 record when playing with her sister Mila
- Won 2022 IHSAA 3A State Championship, helping set the championship game record for 3A as the Panthers scored 93 points
- Ended career ranked second in assists at Washington with 564 • Scored 1,000th career point off an assist from Rashunda Jones



## RASHUNDA JONES

2

**Height** - 5-8 | **Position** - Guard | **Year** - Freshman | **Major** - Sports Marketing  
**Hometown** - South Bend, Ind. | **High School** - South Bend Washington  
**Instagram** - rashunda\_jones | **TikTok** - itzshunda



	Season High	Career High
Points	23, at Penn State, 1/18/24	23, at Penn State, 1/18/24
Rebounds	5, 5x last, at Indiana, 2/11/24	5, 5x last, at Indiana, 2/11/24
Assists	5, at Indiana, 2/11/24	5, at Indiana, 2/11/24
Steals	2, 5x last, at Northwestern, 2/14/24	2, 5x last, at Northwestern, 2/14/24
Blocks	1, 3x last, at Northwestern, 2/14/24	1, 3x last, at Northwestern, 2/14/24
Field Goals	8, vs. Texas A&M, 11/16/23	8, vs. Texas A&M, 11/16/23
3-Pointers	2, vs. Valparaiso, 12/3/23	2, vs. Valparaiso, 12/3/23
Free Throws	10, at Penn State, 1/18/24	10, at Penn State, 1/18/24
Minutes	26, vs. USI, 11/26/23	26, vs. USI, 11/26/23

SEASON	GP-GS	MIN/AVG	FG-FGA	FG%	3FG-FGA	3FG%	FT-FTA	FT%	OFF	DEF	TOT	AVG	PF-FO	AST	TO	BLK	STL	PTS	AVG
2023-24	2-0	403/18.3	58-161	.360	8-29	.276	45-62	.726	9	44	53	2.4	53-2	38	39	2	17	169	7.7

## JONES QUICK HITS

- Named Big Ten Freshman of the Week after scoring 20 points against Texas A&M
- First Purdue freshman with three 20-point games since 2016-17
- 2023 Indiana Miss Basketball runner-up
- No. 79 player in the nation by ESPN HoopGurlz
- 2022 IHSA Class 3A State Champion
- Indiana All-Star & IBCA Supreme 15 as a junior and senior
- Won 2022 IHSA 3A State Championship
- Finished career with 1,791 points, 497 rebounds, 427 assists and 419 steals
- Assisted on Amiyah Reynolds' 1,000th career point

## JAYLA SMITH

3

**Height** - 6-0 | **Position** - Guard | **Year** - Junior | **Major** - Business  
**Hometown** - Indianapolis, Ind. | **High School** - Lawrence North  
**Instagram** - s.jaylasmith | **Twitter** - \_JaylaSmith | **TikTok** - s.jaylasmith



	Season High	Career High
Points	13, vs. Florida, 11/20/23	16, 3x last vs. Iowa, 3/3/23
Rebounds	5, vs. Florida, 11/20/23	7, 3x last vs. Nebraska, 1/18/23
Assists	1, 17x last, vs. Michigan State, 2/21/24	4, 2x last vs. Nebraska, 1/18/23
Steals	2, vs. Valparaiso, 12/3/23	4, 2x last, vs. SIUE, 11/17/22
Blocks	1, 8x last at Indiana, 2/11/24	3, 2x last vs. Indiana, 2/5/23
Field Goals	6, vs. Florida, 11/20/23	7 vs. Iowa, 3/3/23
3-Pointers	1, 2x last, vs. Wisconsin, 12/30/23	4, at Nebraska, 1/30/22
Free Throws	4, at Notre Dame, 12/17/23	4, at Notre Dame, 12/17/23
Minutes	23, vs. Florida, 11/20/23	30 at Penn State, 1/7/23

SEASON	GP-GS	MIN/AVG	FG-FGA	FG%	3FG-FGA	3FG%	FT-FTA	FT%	OFF	DEF	TOT	AVG	PF-FO	AST	TO	BLK	STL	PTS	AVG
2021-22	30-1	473/15.8	54-140	.386	16-55	.291	16-26	.615	13	39	52	1.7	25-0	21	29	11	22	140	4.7
2022-23	30-3	569/19.0	95-209	.455	18-64	.281	26-46	.565	24	40	64	2.1	32-0	37	38	17	30	234	7.8
2023-24	25-1	324/13.0	36-105	.343	4-25	.160	13-20	.650	11	25	36	1.4	14-0	17	20	8	7	89	3.6
TOTAL	85-5	1367/16.1	185-454	.407	38-144	.264	55-92	.598	48	104	152	1.8	71-0	75	87	36	59	463	5.4

## SMITH QUICK HITS

- Sank game-winning 3-pointer vs. Wisconsin in Big Ten Tournament, helping send Purdue to the NCAA Tournament
- Primary substitute as a freshman with one start
- 2021 Indiana Miss Basketball, 10th in program history
- Won the 2020 Indiana 3A State Championship, over Madison Layden's Northwestern, hitting 8 3-pointers
- No. 49 player in the nation and No. 1 in Indiana by MaxPreps
- 3-time First Team All-State selection
- Set season-long career highs in nearly every statistical category in 2022-23
- Ranked No. 49 player in the nation and the No. 1 player in the state of Indiana by MaxPreps

## JEANAE TERRY

10

**Height** - 5-11 | **Position** - Guard | **Year** - Fifth Year | **Major** - Sociology  
**Hometown** - Detroit, Mich. | **High School** - Wayne Memorial | **Previous** - Illinois  
**Instagram** - saucy\_\_nae | **Twitter** - basquetbol\_nae | **TikTok** - saucytiktok10



	Season High	Career High	(*prior school)
Points	14, at Michigan State, 1/24/24	28, at Wisconsin, 1/31/21*	
Rebounds	15, 2x last vs. Michigan State, 2/21/24	17, 2x last vs. Illinois, 2/17/22	
Assists	14, vs. Illinois, 2/5/24	14, vs. Illinois, 2/5/24	
Steals	4, at Northwestern, 2/14/24	8 vs. Penn State, 2/22/23	
Blocks	2, at Dayton, 12/1/23	4, vs. Chicago State, 11/5/19*	
Field Goals	7, at Michigan State, 1/24/24	9, vs. Penn State, 1/28/21*	
3-Pointers	1, 2x last, at Notre Dame, 12/17/23	3, 3x last vs. Ohio State, 1/7/21*	
Free Throws	4, vs. Texas A&M, 11/16/23	11, at Wisconsin, 1/31/21*	
Minutes	45, vs. Illinois, 2/5/24	45, vs. Illinois, 2/5/24	

SEASON	GP-GS	MIN/AVG	FG-FGA	FG%	3FG-FGA	3FG%	FT-FTA	FT%	OFF	DEF	TOT	AVG	PF-FO	AST	TO	BLK	STL	PTS	AVG
2019-20	30-11	693/23.1	65-225	.289	15-57	.263	40-66	.606	34	79	113	3.8	55-1	91	50	17	35	185	6.2
2020-21	23-23	690/30.0	89-226	.394	15-58	.259	54-74	.730	48	131	179	7.8	48-1	101	96	6	41	247	10.7
2021-22	32-32	949/29.6	88-215	.409	3-21	.143	51-74	.689	66	157	223	7.0	80-2	183	100	14	41	230	7.2
2022-23	30-30	898/29.9	74-185	.400	1-10	.100	45-71	.634	60	167	227	7.6	62-0	190	93	12	70	194	6.5
2023-24	26-26	775/29.8	48-120	.400	2-5	.400	33-47	.702	57	136	193	7.4	60-1	162	78	7	45	131	5.0
PURDUE	88-88	2622/29.8	210-520	.404	6-36	.167	129-192	.672	183	460	643	7.3	202-3	535	271	33	156	555	6.3
TOTAL	141-122	4004/28.4	364-971	.375	36-151	.238	223-332	.672	265	670	935	6.6	305-5	727	417	56	232	987	7.0

## TERRY QUICK HITS

- 14 assists vs. Illinois, tied for second most in Purdue history
- 7th in career assists at Purdue, 7th Boiler in 500-assist club
- Second player from the Big Ten to join the 900-rebound, 700-assist and 200-steal club (Samantha Logic, Iowa)
- 2nd Team All-Big Ten, All-Defensive Team honoree last year
- Joined Caitlin Clark hit 150 ast, 200 reb the last two seasons
- Has only four non-point double-doubles in Purdue history
- Only Boilermaker (men or women) in history to record multiple triple-doubles in a season and a career
- Only Boilermaker to ever record over 150 assists and 200 rebounds in a season twice
- High school jersey retired over holiday break in 2023

## MCKENNA LAYDEN

11

**Height** - 6-2 | **Position** - Guard | **Year** - Freshman | **Major** - Pre-dental  
**Hometown** - Kokomo, Ind. | **High School** - Northwestern  
**Instagram** - mckenna.layden | **Twitter** - \_mckennalayden | **TikTok** - mckenna.layden



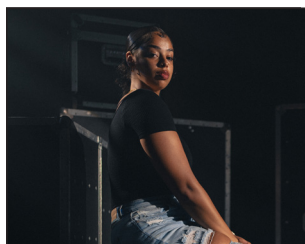
	Season High	Career High
Points	8, vs. USI, 11/26/23	8, vs. USI, 11/26/23
Rebounds	6, vs. USI, 11/26/23	6, vs. USI, 11/26/23
Assists	4, at Michigan State, 1/24/24	4, at Michigan State, 1/24/24
Steals	1, 9x last, at Michigan State, 1/24/24	1, 9x last, at Michigan State, 1/24/24
Blocks	1, at Dayton, 12/1/23	1, at Dayton, 12/1/23
Field Goals	2, 2x last, at Notre Dame, 12/17/23	2, 2x last, at Notre Dame, 12/17/23
3-Pointers	2, vs. USI, 11/26/23	2, vs. USI, 11/26/23
Free Throws	2, vs. USI, 11/26/23	2, vs. USI, 11/26/23
Minutes	26, at Michigan State, 1/24/24	26, at Michigan State, 1/24/24

SEASON	GP-GS	MIN/AVG	FG-FGA	FG%	3FG-FGA	3FG%	FT-FTA	FT%	OFF	DEF	TOT	AVG	PF-FO	AST	TO	BLK	STL	PTS	AVG
2023-24	22-0	226/10.3	10-33	.303	7-25	.280	3-4	.750	4	23	27	1.2	9-0	16	6	1	9	30	1.4

## LAYDEN QUICK HITS

- Playing alongside Madison for the first time since her freshman year, when they reached the IHSA State Championship Game
- Tabbed Elite 150 by Prospects Nation
- Indiana All-Star & IBCA Supreme 15 as a junior and senior
- Two-time sectional champion, won regional and semi-state once, appeared in one state final
- Named an Indiana Junior Core Six All-Star as a junior
- Posted a 78-17 record in high school
- Won two sectional titles in volleyball and two in tennis
- Her mother Kathie was her head coach in high school, won five state titles during coaching career - most by non-private coach

## MILA REYNOLDS 15



**Height** - 6-3 | **Position** - Forward | **Year** - Sophomore | **Major** - African American Studies  
**Hometown** - South Bend, Ind. | **High School** - South Bend Washington | **Previous** - Maryland  
**Instagram** - milareynolds15 | **Twitter** - 15milareynolds | **TikTok** - milamarie\_15

	Season High	Career High
Points	7, at Nebraska, 1/31/24	7, at Nebraska, 1/31/24
Rebounds	5, vs. Valparaiso, 12/3/23	5, vs. Valparaiso, 12/3/23
Assists	1, 2x last, vs. Valparaiso, 12/3/23	2, at Northwestern, 29/23*
Steals	2, at Nebraska, 1/31/24	2, at Nebraska, 1/31/24
Blocks	2, vs. Ohio State, 1/28/24	2, vs. Ohio State, 1/28/24
Field Goals	3, at Nebraska, 1/31/24	3, at Nebraska, 1/31/24
3-Pointers	1, 3x last, at Nebraska, 1/31/24	1, 3x last, at Nebraska, 1/31/24
Free Throws	4, vs. Valparaiso, 12/3/23	4, vs. Valparaiso, 12/3/23
Minutes	16, vs. Valparaiso, 12/3/23	16, vs. Valparaiso, 12/3/23

SEASON	GP-GS	MIN/AVG	FG-FGA	FG%	3FG-FGA	3FG%	FT-FTA	FT%	OFF	DEF	TOT	AVG	PF-FO	AST	TO	BLK	STL	PTS	AVG
2022-23	22-0	111/5.1	9-29	.310	0-2	.000	5-6	.833	7	12	19	0.9	13-0	4	6	1	2	23	1.0
2023-24	19-0	139/7.3	14-40	.350	3-14	.214	9-11	.818	4	12	16	0.8	19-0	3	14	3	3	40	2.1
TOTAL	41-0	250/6.1	23-69	.333	3-16	.188	14-17	.824	11	24	35	0.9	32-0	7	20	4	5	63	1.5

## REYNOLDS QUICK HITS

- Transferred to Purdue in May of 2023
- Saw action in 22 games with the Terrapins
- No. 60 player, No. 16 forward, four-star, 94 rating by ESPN HoopGurlz- Finished third in voting for the 2022 Indiana Miss Basketball
- Tabbed Indiana All-Star & IBCA Academic All-State as a senior
- Played alongside Amiyah Reynolds and Rashunda Jones for three seasons, going 78-30 over four years and 68-17 with Amiyah
- Totaled 2,099 career points, second in Panther history behind 2010 graduate Skylar Diggins-Smith

## MARY ASHLEY STEVENSON 20



**Height** - 6-2 | **Position** - Forward | **Year** - Freshman | **Major** - Communications  
**Hometown** - New York City, N.Y. | **High School** - The Dalton School  
**Instagram** - maryashleystevenson | **Twitter** - \_MA\_Stevenson20

	Season High	Career High
Points	25, vs. Illinois, 2/5/24	25, vs. Illinois, 2/5/24
Rebounds	11, at Minnesota, 12/10/23	11, at Minnesota, 12/10/23
Assists	2, 6x last, vs. Rutgers, 1/2/24	2, 6x last, vs. Rutgers, 1/2/24
Steals	2, 2x last, vs. Indiana, 1/21/24	2, 2x last, vs. Indiana, 1/21/24
Blocks	2, vs. Valparaiso, 12/3/23	2, vs. Valparaiso, 12/3/23
Field Goals	8, vs. Illinois, 2/5/24	8, vs. Illinois, 2/5/24
3-Pointers	1, at Minnesota, 12/10/23	1, at Minnesota, 12/10/23
Free Throws	9, vs. Illinois, 2/5/24	9, vs. Illinois, 2/5/24
Minutes	36, at Minnesota, 12/10/23	36, at Minnesota, 12/10/23

SEASON	GP-GS	MIN/AVG	FG-FGA	FG%	3FG-FGA	3FG%	FT-FTA	FT%	OFF	DEF	TOT	AVG	PF-FO	AST	TO	BLK	STL	PTS	AVG
2023-24	26-25	713/27.4	97-225	.431	2-19	.105	67-82	.817	50	78	128	4.9	68-2	22	55	11	15	263	10.1

## STEVENSON QUICK HITS

- 1 of 11 freshman in Purdue history to reach 250 points and 125 rebounds in their first campaign
- Broke nose vs. Ohio State, wearing a mask rest of the year, had surgery on Feb. 6
- 25 points vs. Illinois, most by a Purdue freshman since 2010-11
- Two-time Big Ten Freshman of the Week (Jan. 2, Feb. 12)
- First USBWA Freshman of the Week in program history
- First career double-double vs. Valpo (14 pts, 10 rebs)
- 3x state champion, two in New York and one in South Carolina
- Played high school ball under assistant coach Doug Feinberg
- Changed last name from Groot to Stevenson to match her stepfather's name before she came to campus in June 2023

## EMILY MONSON 21



**Height** - 6-1 | **Position** - Guard | **Year** - Freshman | **Major** - Psychology  
**Hometown** - Murfreesboro, Tenn. | **High School** - Blackman  
**Instagram** - emilymonson\_ | **Twitter** - \_emilymonson21 | **TikTok** - emillymonson

	Season High	Career High
Points	4, at UCLA, 11/6/23	4, at UCLA, 11/6/23
Rebounds	4, vs. SEMO, 12/6/23	4, vs. SEMO, 12/6/23
Assists	4, vs. Valparaiso, 12/3/23	4, vs. Valparaiso, 12/3/23
Steals	1, at UCLA, 11/6/23	1, at UCLA, 11/6/23
Blocks	1, vs. USI, 11/26/23	1, vs. USI, 11/26/23
Field Goals	1, 2x last, vs. Valparaiso, 12/3/23	1, 2x last, vs. Valparaiso, 12/3/23
3-Pointers	1, 3x last, vs. Indiana St., 12/20/23	1, 3x last, vs. Indiana St., 12/20/23
Free Throws	1, at UCLA, 11/6/23	1, at UCLA, 11/6/23
Minutes	14, vs. USI, 11/26/23	14, vs. USI, 11/26/23

SEASON	GP-GS	MIN/AVG	FG-FGA	FG%	3FG-FGA	3FG%	FT-FTA	FT%	OFF	DEF	TOT	AVG	PF-FO	AST	TO	BLK	STL	PTS	AVG
2023-24	15-0	68/4.5	4-22	.182	3-13	.231	1-2	.500	2	7	9	0.6	11-0	8	7	1	2	12	0.8

## MONSON QUICK HITS

- Naismith High School All-America honorable mention
- No. 15 player in the state by Prep Girls Hoops
- Guided the Blaze to a 2021 Tennessee 3A State Championship
- Won four regional championships and three district titles
- Went 107-16 over high school career, including 81-8 as a starter for three seasons
- Scored 1,066 points with 337 rebounds and 117 steals in career
- Connected on 104 3-pointers at a 41% rate in final campaign
- Scored more points as a senior than her first three seasons combined
- Guided Blackman to the Elite Eight of the TSSAA 4A State Tournament

## ABBEY ELLIS 23



**Height** - 5-6 | **Position** - Guard | **Year** - Fifth Year | **Major** - Early Childhood Education  
**Hometown** - Melbourne, Australia | **High School** - Our Lady of Mercy | **Previous** - Cal Poly  
**Instagram** - \_abbeyellis | **Twitter** - \_abbeyellis | **TikTok** - abbeye\_22

	Season High	Career High	(*prior school)
Points	28, vs. Indiana State, 12/20/23	39, at San Diego St., 12/21/20*	
Rebounds	6, 4x last, vs. Illinois, 2/5/24	10, vs. Long Beach St., 3/10/21*	
Assists	7, vs. USI, 11/26/23	11, vs. Western Michigan, 11/14/21	
Steals	5, vs. Iowa, 1/10/24	8, vs. Santa Clara, 12/15/20*	
Blocks	1, 3x last, at Nebraska, 1/31/24	1, 19x last, at Nebraska, 1/31/24	
Field Goals	9, vs. Texas A&M, 11/16/23	14, vs. UC Riverside, 1/23/20*	
3-Pointers	4, vs. Ohio State, 1/28/24	8, at UC San Diego, 1/1/21*	
Free Throws	9, vs. Indiana St., 12/20/23	10, at UC San Diego, 1/2/21*	
Minutes	42, vs. Illinois, 2/5/24	44 vs. Indiana, 1/16/22	

SEASON	GP-GS	MIN/AVG	FG-FGA	FG%	3FG-FGA	3FG%	FT-FTA	FT%	OFF	DEF	TOT	AVG	PF-FO	AST	TO	BLK	STL	PTS	AVG
2019-20	29-29	950/32.8	165-392	.421	48-148	.324	73-87	.839	10	124	134	4.6	75-2	84	94	3	42	451	15.6
2020-21	24-23	753/31.4	127-322	.394	42-116	.362	71-80	.888	17	95	112	4.7	51-2	62	70	3	62	367	15.3
2021-22	32-31	928/29.0	128-275	.465	31-93	.333	82-96	.854	27	74	101	3.2	52-0	95	71	7	35	369	11.5
2022-23	29-18	801/27.6	106-223	.475	35-94	.372	77-84	.917	15	69	84	2.9	50-0	43	49	3	21	324	11.2
2023-24	26-26	784/30.1	122-301	.405	35-114	.307	71-85	.835	23	71	94	3.6	48-1	52	50	3	35	350	13.5
PURDUE	87-75	2513/28.9	356-799	.446	101-301	.336	230-265	.868	65	214	279	3.2	150-1	190	170	13	91	1043	12.0
TOTAL	140-127	4216/30.1	648-1513	.428	191-565	.338	374-432	.866	92	433	525	3.8	276-5	336	334	19	195	1861	13.3

## ELLIS QUICK HITS

- Topped 1,800 career points against Nebraska this year
- 36th 1,000-point scorer in Purdue history, reached the club against Northwestern this season
- Elected to use fifth year of eligibility for the 2023-24 season
- Two-time All-Big Ten honorable mention
- Shot a career-best 91.7% at the line to finish third in the nation and first in the Big Ten last year, good for third in Purdue history
- Crossed the career 1,000-point plateau in 2021-22
- Mother Libbie sends several ribbons in for her to wear in games
- Father Martin was an Australian Rules Football official who refereed 244 matches in 13 years, including the 2001 Grand Final.
- First Australian in Purdue history



# SOPHIE SWANSON 31



**Height** - 5-10 | **Position** - Guard | **Year** - Freshman | **Major** - Elementary Education  
**Hometown** - Barrington, Ill. | **High School** - Barrington  
**Instagram** - sophieswanson31 | **Twitter** - sophieswanson31 | **TikTok** - sophieswanson31

	Season High	Career High
Points	19, vs. Michigan State, 2/21/24	19, vs. Michigan State, 2/21/24
Rebounds	3, 2x last, vs. SEMO, 12/6/23	3, 2x last, vs. SEMO, 12/6/23
Assists	2, vs. Indiana St., 12/20/23	2, vs. Indiana St., 12/20/23
Steals	2, at Northwestern, 2/14/24	2, at Northwestern, 2/14/24
Blocks	1, at Indiana, 2/11/24	1, at Indiana, 2/11/24
Field Goals	6, vs. Michigan State, 2/21/24	6, vs. Michigan State, 2/21/24
3-Pointers	5, vs. Michigan State, 2/21/24	5, vs. Michigan State, 2/21/24
Free Throws	3, at Penn State, 1/18/24	3, at Penn State, 1/18/24
Minutes	25, vs. Michigan State, 2/21/24	25, vs. Michigan State, 2/21/24

SEASON	GP-GS	MIN/AVG	FG-FGA	FG%	3FG-FGA	3FG%	FT-FTA	FT%	OFF	DEF	TOT	AVG	PF-FO	AST	TO	BLK	STL	PTS	AVG
2023-24	19-0	186/9.8	43-96	.448	26-63	.413	8-12	.667	5	17	22	1.2	14-0	7	20	1	5	120	6.3

# ALAINA HARPER 32



**Height** - 6-3 | **Position** - Guard | **Year** - Sophomore | **Major** - Biomedical Health  
**Hometown** - Hartland, Wis. | **High School** - Arrowhead | **Previous** - Grand Canyon  
**Instagram** - alaina\_harper32 | **Twitter** - alainaharper32

	Season High	Career High
Points	4, vs. SEMO, 12/6/23	18, vs. Lindenwood, 11/26/22*
Rebounds	3, at Nebraska, 1/31/24	8, vs. Columbia, 12/11/22*
Assists		1, 5x last at Southern Utah, 3/2/23*
Steals		2, vs. Seattle, 2/18/23*
Blocks	1, 2x last, at Nebraska, 1/31/24	1, 5x last, at Nebraska, 1/31/24
Field Goals	1, 2x last, vs. Indiana St., 12/20/23	8, vs. Lindenwood, 11/26/22*
3-Pointers		1, 3x last at Southern Utah, 3/2/23*
Free Throws	1, at Northwestern, 2/14/24	5, at Southern Utah, 3/2/23*
Minutes	14, vs. USI, 11/26/23	35, vs. Southern Utah, 3/10/23*

SEASON	GP-GS	MIN/AVG	FG-FGA	FG%	3FG-FGA	3FG%	FT-FTA	FT%	OFF	DEF	TOT	AVG	PF-FO	AST	TO	BLK	STL	PTS	AVG
2022-23	29-2	334/11.5	58-102	.569	3-5	.600	26-40	.650	35	29	64	2.2	35-0	5	21	3	3	145	5.0
2023-24	21-0	109/5.2	7-9	.778	0-0	.000	3-6	.500	4	15	19	0.9	9-0	0	7	2	0	17	0.8
TOTAL	50-2	443/8.9	65-111	.586	3-5	.600	29-46	.630	39	44	83	1.7	44-0	5	28	5	3	162	3.2

# MADISON LAYDEN 33



**Height** - 6-1 | **Position** - Guard | **Year** - Senior | **Major** - Selling & Sales Management  
**Hometown** - Kokomo, Ind. | **High School** - Northwestern  
**Instagram** - madison\_layden | **Twitter** - madison\_layden | **TikTok** - madison\_layden

	Season High	Career High
Points	21, vs. Southern, 11/12/23	21, vs. Southern, 11/12/23
Rebounds	7, at Northwestern, 2/14/24	8 4x last, at Michigan State, 12/4/22
Assists	5, 2x last, at Northwestern, 2/14/24	7, vs. Michigan State - 1/3/21
Steals	3, 3x last, vs. Wisconsin, 12/30/23	6, at Rutgers, 2/20/22
Blocks	2, vs. Wisconsin, 12/30/23	2 7x last, vs. Wisconsin, 12/30/23
Field Goals	7, 2x last, vs. Rutgers, 1/2/24	8, 2x last vs. Penn State, 2/9/22
3-Pointers	5, at Northwestern, 2/14/24	6, at Iowa - 1/18/21
Free Throws	7, vs. Southern, 11/12/23	7, vs. Southern, 11/12/23
Minutes	41, vs. Illinois, 2/5/24	44 vs. Indiana, 1/16/22

SEASON	GP-GS	MIN/AVG	FG-FGA	FG%	3FG-FGA	3FG%	FT-FTA	FT%	OFF	DEF	TOT	AVG	PF-FO	AST	TO	BLK	STL	PTS	AVG
2020-21	23-21	729/31.7	70-163	.429	45-111	.405	15-20	.750	12	61	73	3.2	43-0	69	44	5	48	200	8.7
2021-22	29-28	986/34.0	117-337	.347	63-190	.332	40-47	.851	24	110	134	4.6	71-1	80	55	15	49	337	11.6
2022-23	28-13	816/29.2	56-165	.339	34-124	.274	34-38	.895	2	115	117	4.2	72-1	83	53	10	30	180	6.4
2023-24	26-26	779/30.0	87-209	.416	56-131	.427	37-46	.804	8	77	85	3.3	56-0	46	39	17	29	267	10.3
TOTAL	106-88	3310/31.2	330-874	.378	198-556	.356	126-151	.834	46	363	409	3.9	242-2	278	191	47	156	984	9.3

# CAITLYN HARPER 34



**Height** - 6-3 | **Position** - Forward | **Year** - Sixth Year | **Major** - Master's Management  
**Hometown** - Hartland, Wisc. | **High School** - Arrowhead | **Previous** - Cal Baptist  
**Instagram** - caitlynharper32 | **Twitter** - C\_harp32 | **TikTok** - caitlynharper32

	Season High	Career High	(*prior school)
Points	22, vs. SEMO, 12/6/23	30, at Utah Valley, 1/15/22*	
Rebounds	11, vs. Texas A&M, 11/16/23	14, 3x last, vs. Chicago State*	
Assists	4, 2x last, at Penn State, 1/18/24	5, at UTRGV, 2/13/21*	
Steals	3, at Dayton, 12/1/23	5, at Sam Houston State, 1/27/22*	
Blocks	4, vs. Iowa, 1/10/24	8, at Chicago State, 3/2/22*	
Field Goals	9, vs. SEMO, 12/6/23	12, vs. Utah Valley, 2/26/22	
3-Pointers	2, 3x last, vs. SEMO, 12/6/23	4, vs. Rice, 3/22/21*	
Free Throws	5, vs. Indiana, 1/21/24	10, vs. Sam Houston State, 3/10/22*	
Minutes	38, vs. Indiana, 1/21/24	41, at Chicago State, 3/2/22*	

SEASON	GP-GS	MIN/AVG	FG-FGA	FG%	3FG-FGA	3FG%	FT-FTA	FT%	OFF	DEF	TOT	AVG	PF-FO	AST	TO	BLK	STL	PTS	AVG
2018-19	29-3	470/16.2	100-203	.493	11-52	.212	40-58	.690	36	84	120	4.1	49-0	23	38	21	11	251	8.7
2019-20	5-5	121/24.3	32-56	.571	1-2	.500	16-18	.889	13	32	45	9.0	17-0	7	10	10	2	81	16.2
2020-21	27-10	642/23.8	149-281	.530	27-70	.386	60-76	.789	62	140	202	7.5	67-0	35	50	34	31	385	14.3
2021-22	32-32	964/30.1	223-421	.530	29-95	.305	94-127	.740	36	153	189	5.9	68-0	40	58	51	41	569	17.8
2022-23	30-29	713/23.8	127-232	.547	17-52	.327	41-53	.774	38	78	116	3.9	65-1	18	49	18	18	312	10.4
2023-24	26-26	719/27.7	112-209	.536	18-58	.310	35-39	.897	28	73	101	3.9	49-0	32	46	21	24	277	10.7
PURDUE	56-55	1432/25.6	239-441	.542	35-110	.318	76-92	.826	66	151	217	3.9	114-1	50	95	39	42	589	10.5
TOTAL	149-105	3629/24.4	743-1402	.530	103-329	.313	286-371	.771	213	560	773	5.2	315-1	155	251	155	127	1875	12.6

## SWANSON QUICK HITS

- Made career debut against Valparaiso
- Sank five triples against Michigan State
- Coming off knee injury that ended senior campaign
- 2022 Illinois Miss Basketball and Illinois 4A Player of the Year
- Invited to the U18 USA Team Trials
- Four-time all-state, all-conference and all-area honoree
- Honored as the Barrington Female Athlete of the Year in 2021-22
- Won conference, regional, sectional, super-sectional titles as a junior, reaching the state finals
- Invited to U18 Team USA camp as a junior
- Set the school record for points in a season (750), 3-pointers (86), thrice set the school mark for points in a game (40, 37, 36)

## HARPER QUICK HITS

- Teammates with her sister Caitlyn for the first time
- Transferred to Purdue in May of 2023
- Appeared in 29 games with a pair of starts at Grand Canyon
- Was named WAC Freshman of the Week early in the season
- No. 6 player in Wisconsin by Prep Girls Hoops
- Garnered back-to-back WBCA Division I First Team All-State honors as a junior and senior
- Tabbed the 2022 Wisconsin Sports Network's top post player
- 2021 USA Today High School Sports Awards (Milwaukee) nominee

## LAYDEN QUICK HITS

- Playing alongside her sister freshman McKenna
- 6th on Purdue's career 3-point list
- Got engaged over the holiday break to Rees Zay, a Purdue graduate and former practice player for the program
- Big Ten All-Freshman (2021), honorable mention (2022)
- One of 12 players to have 30 3-pointers, 30 steals and 65 assists each of the last three seasons
- Invited to the USA Basketball U19 World Cup Trials
- Named to the All-Freshman Team in 2020-21
- Tied freshman record with 7 3pts in a game at Iowa
- First in IHSA history to lead three Final Fours in scoring
- Ranked 13th in IHSA in career scoring and one of 46 2,000-point scorers in state history

## HARPER QUICK HITS

- Playing with her sister Alaina this season for the first time
- Crossed 1,800 points for career against Michigan State this year
- Tallied 1,500th career point against Illinois last year
- Finished third on the team in scoring last season
- One of 11 players from the Big Ten to average double figures and shoot better than 50% in 2022-23
- Transferred to Purdue after spending four seasons at Cal Baptist
- 2022 WAC Player of the Year and CoSIDA All-American
- Played parts of four seasons at Cal Baptist, starting in 2018-19
- Named the 2022 CoSIDA Academic All-America, 2021-22 WAC Player of the Year, 2021 WAC Tournament MVP



# 2023-24 PURDUE WOMEN'S BASKETBALL GAME NOTES

## 2 | Rashunda Jones

2023-24	Min.	FG	3FG	FT	O-D-T	PF	Pts	A	To	S	B	+/-
UCLA*	20	2-7	0-2	0-0	0-1-1	3	4	0	1	0	0	-33
Southern	15	1-8	1-3	1-2	0-2-2	3	4	1	4	0	1	4
Texas A&M	23	8-11	0-1	4-6	0-2-2	3	20	0	1	0	1	11
Florida	18	1-6	0-0	2-2	1-4-5	5	4	1	3	1	0	9
Georgia	21	4-8	0-0	2-2	1-4-5	2	10	0	3	1	0	-10
USI	26	6-11	2-4	2-4	1-4-5	2	16	3	3	2	0	22
Dayton	19	3-9	0-1	1-2	0-1-1	2	7	3	3	1	0	5
Valpo	19	6-9	2-3	8-8	0-4-4	1	22	4	2	1	0	29
SEMO	DNP											
Minnesota	DNP											
Notre Dame	DNP											
Indiana State	DNP											
Wisconsin	17	1-7	0-2	2-2	0-1-1	0	4	3	2	0	0	0
Rutgers	17	7-14	2-4	3-3	2-0-2	4	19	3	1	0	0	2
Iowa	11	1-7	1-1	0-0	0-0-0	2	3	0	1	1	0	-14
Maryland	9	0-7	0-3	0-0	2-2-4	3	0	0	0	0	0	-7
Penn State	24	6-13	1-1	10-12	1-2-3	4	23	2	1	2	0	1
Indiana	20	5-11	1-1	2-4	0-3-3	3	13	2	1	0	0	3
MSU	17	1-4	0-0	0-0	0-1-1	4	2	3	2	0	0	-2
Ohio State	24	5-11	0-1	3-3	0-3-3	2	13	2	1	2	0	-1
Nebraska	24	2-8	0-1	0-2	1-4-5	2	4	2	2	1	0	-1
Illinois	14	1-3	0-0	0-2	0-1-1	0	2	1	0	1	0	7
Indiana	18	0-3	0-0	0-0	0-1-1	2	0	5	5	2	0	-7
Northwestern	21	1-5	0-1	1-2	2-2-4	1	3	1	2	2	0	13
Nebraska	16	2-7	0-2	1-1	0-0-0	5	5	1	0	0	0	-1
MSU	15	0-1	0-0	0-0	0-2-2	3	0	1	2	0	0	-2
Wisconsin												
Penn State												
Michigan												

\* Started

^Big Ten Tournament

## 10 | Jeanae Terry

2023-24	Min.	FG	3FG	FT	O-D-T	PF	Pts	A	To	S	B	+/-
UCLA*	30	1-5	0-0	3-4	1-6-7	2	5	4	2	1	0	-23
Southern*	35	1-6	0-0	3-4	1-10-11	0	5	7	2	0	0	15
Texas A&M*	38	2-6	0-0	4-4	1-4-5	2	8	10	3	3	0	9
Florida*	25	0-2	0-0	0-0	2-2-4	0	0	2	0	1	0	-10
Georgia*	26	2-4	0-0	0-1	0-1-1	2	4	4	4	0	0	-9
USI*	18	2-3	0-0	2-2	2-4-6	2	6	8	1	3	1	31
Dayton*	30	0-3	0-0	1-2	1-7-8	0	1	4	3	0	2	5
Valpo*	20	0-1	0-0	3-4	1-6-7	2	3	4	3	2	0	3
SEMO*	28	0-1	0-0	1-2	3-7-10	3	1	11	1	1	1	28
Minnesota*	35	2-6	1-1	2-2	1-14-15	4	7	9	7	2	1	8
Notre Dame*	30	1-5	1-1	2-2	1-3-4	1	5	1	5	1	0	-35
Indiana State*	17	2-3	0-0	0-0	3-2-5	3	4	5	1	0	0	17
Wisconsin*	32	5-9	0-0	3-3	5-7-12	3	13	9	3	3	1	41
Rutgers*	39	3-4	0-0	2-6	5-5-10	3	8	5	3	2	0	-2
Iowa*	28	5-9	0-1	0-0	0-1-1	2	10	4	3	2	0	-12
Maryland*	32	3-6	0-0	1-1	2-3-5	1	87	6	6	2	0	-15
Penn State*	36	0-2	0-0	0-0	1-6-7	4	0	3	3	3	0	-9
Indiana*	37	2-6	0-0	0-0	7-1-8	1	4	6	4	2	0	-2
MSU*	31	7-8	0-0	0-0	3-5-8	4	14	8	1	2	0	-27
Ohio State*	40	3-6	0-1	2-4	3-5-8	1	8	5	6	1	0	-3
Nebraska*	12	0-2	0-0	2-2	2-0-2	3	2	2	1	1	0	-9
Illinois*	45	4-9	0-0	1-2	3-6-9	2	9	14	3	3	0	5
Indiana*	27	2-5	0-0	0-0	2-5-7	4	4	2	1	0	0	-19
Northwestern*	27	0-2	0-0	1-2	4-8-12	4	1	11	3	4	1	25
Nebraska*	29	1-4	0-1	0-0	1-5-6	5	2	11	2	3	0	0
MSU*	33	0-3	0-0	0-0	2-13-15	2	0	7	7	3	0	-2
Wisconsin												
Penn State												
Michigan												

\* Started

^Big Ten Tournament

## 3 | Jayla Smith

2023-24	Min.	FG	3FG	FT	O-D-T	PF	Pts	A	To	S	B	+/-
UCLA	17	2-7	0-3	0-0	1-2-3	1	4	0	3	0	0	-23
Southern	DNP											
Texas A&M	20	0-4	0-2	0-0	0-1-1	0	0	1	0	0	1	22
Florida	24	6-10	1-4	0-0	0-5-5	1	13	1	3	0	0	-6
Georgia	17	0-4	0-2	0-0	0-2-2	0	0	0	0	0	0	1
USI	16	4-7	0-2	0-2	0-0-0	3	8	1	2	0	1	17
Dayton	11	2-6	0-0	0-0	3-1-4	0	4	0	2	0	1	4
Valpo	16	3-4	0-1	0-0	0-3-3	2	6	1	2	2	0	19
SEMO	20	2-7	0-1	2-2	0-0-0	1	6	1	0	0	0	-1
Minnesota	14	0-5	0-0	0-0	0-1-1	0	0	1	0	0	0	-11
Notre Dame	16	0-6	0-1	4-4	0-0-0	0	4	1	0	1	1	-11
Indiana State	13	0-4	0-0	2-4	2-0-2	1	2	1	1	0	1	-13
Wisconsin	14	2-5	1-1	1-2	0-1-1	0	6	1	1	2	0	6
Rutgers	7	1-2	0-0	0-0	1-0-1	0	2	0	1	0	0	-4
Iowa	17	4-9	0-2	0-0	1-1-2	1	8	1	0	1	0	-3
Maryland	9	0-0	0-0	1-2	1-0-1	0	1	1	1	0	0	-9
Penn State	10	1-4	1-1	0-0	1-0-1	1	3	0	1	0	0	-6
Indiana	2	0-0	0-0	0-0	0-0-0	0	0	0	1	0	0	0
MSU	14	1-2	0-1	2-2	1-2-3	1	4	1	1	0	0	-18
Ohio State	3	0-1	0-0	0-0	0-0-0	0	0	0	0	0	0	4
Nebraska	12	2-4	0-0	0-0	0-1-1	0	4	1	0	0	1	-6
Illinois	9	2-4	0-2	0-0	0-1-1	0	4	1	1	0	1	-2
Indiana	11	1-2	0-1	00-0	0-1-1	1	2	0	0	0	1	-6
Northwestern	16	2-3	0-0	0-0	0-0-0	1	4	1	0	1	0	9
Nebraska	14	1-4	1-1	1-2	0-2-2	0	4	1	0	0	0	4
MSU	5	0-1	0-0	0-0	0-1-1	0	0	1	0	0	0	-8
Wisconsin												
Penn State												
Michigan												

\* Started

^Big Ten Tournament

## 11 | McKenna Layden

2023-24	Min.	FG	3FG	FT	O-D-T	PF	Pts	A	To	S	B	+/-
UCLA	15	1-4	1-2	1-2	1-0-1	0	4	0	0	1	0	-25
Southern	19	0-3	0-3	0-0	0-4-4	0	0	2	1	1	0	-5
Texas A&M	10	0-0	0-0	0-0	0-0-0	0	0	0	0	0	0	9
Florida	11	0-0	0-0	0-0	0-1-1	0	0	0	0	0	0	-3
Georgia	4	0-2	0-2	0-0	0-1-1	0	0	0	0	1	0	-2
USI	22	2-4	2-3	2-2	0-6-6	1	8	1	0	1	0	14
Dayton	10	0-1	0-1	0-0	0-3-3	0	0	1	0	0	1	-2
Valpo	18	0-1	0-1	0-0	0-3-3	1	0	1	1	0	0	13
SEMO	14	1-2	1-2	0-0	1-1-2	1	3	0	0	1	0	6
Minnesota	DNP											
Notre Dame	12	2-3	1-1	0-0	0-0-0	2	5	1	0	1	0	-6
Indiana State	7	0-0	0-0	0-0	0-1-1	0	0	0	0	0	0	-8
Wisconsin	11	0-1	0-1	0-0	0-0-0	0	0	1	0	1	0	10
Rutgers	4	0-1	0-0	0-0	1-0-1	0	0	0	0	0	0	-2
Iowa	2	0-0	0-0	0-0	0-0-0	0	0	0	0	0	0	-2
Maryland	11	1-3	1-3	0-0	0-0-0	0	3	2	0	1	0	-8
Penn State	5	0-1	0-1	0-0	0-0-0	0	0	0	1	0	0	4
Indiana	1	0-0	0-0	0-0	0-0-0	0	0	0	0	0	0	0
MSU	26	0-1	0-1	0-0	1-2-3	1	0	4	2	1	0	7
Ohio State	11	1-2	1-2	0-0	0-0-0	0	3	1	0	0	0	-6
Nebraska	15	0-2	0-2	0-0	0-1-1	3	0	2	1	0	0	2
Illinois	2	0-0	0-0	0-0	0-0-0	0	0	0	0	0	0	4
Indiana	5	2-2	0-0	0-0	0-0-0	0	4	0	0	0	0	-6
Northwestern	DNP											
Nebraska	DNP											
MSU	DNP											
Wisconsin												
Penn State												
Michigan												

\* Started

^Big Ten Tournament

# 2023-24 PURDUE WOMEN'S BASKETBALL GAME NOTES

## 15 | Mila Reynolds

2023-24	Min.	FG	3FG	FT	O-D-T	PF	Pts	A	To	S	B	+/-
UCLA	5	0-2	0-1	0-0	0-0-0	1	0	1	1	0	0	-14
Southern	4	0-0	0-0	0-0	0-0-0	1	0	0	0	0	0	-4
Texas A&M	DNP											
Florida	DNP											
Georgia	DNP											
USI	DNP											
Dayton	DNP											
Valpo	16	1-2	0-0	4-6	1-4-5	2	6	1	2	2	0	19
SEMO	DNP											
Minnesota	2	0-2	0-1	0-0	0-0-0	0	0	0	0	0	0	-3
Notre Dame	12	1-2	0-1	0-0	0-2-2	3	2	0	3	0	1	-3
Indiana State	15	2-5	1-2	0-0	0-2-2	2	5	0	1	0	0	8
Wisconsin	4	1-1	0-0	0-0	1-0-1	0	2	0	0	0	0	-4
Rutgers	10	1-2	0-0	1-2	0-1-1	1	3	0	0	0	0	0
Iowa	6	1-3	0-1	2-2	0-0-0	2	4	0	1	0	0	-3
Maryland	2	0-0	0-0	0-0	0-0-0	0	0	0	1	0	0	-8
Penn State	1	0-1	0-0	0-0	0-0-0	0	0	0	0	1	0	0
Indiana	DNP											
MSU	4	0-0	0-0	0-0	0-0-0	1	0	0	0	0	0	-5
Ohio State	15	2-3	1-2	0-0	1-0-1	1	5	0	1	0	2	-6
Nebraska	14	3-8	1-5	0-0	0-1-1	0	7	1	2	2	0	-1
Illinois	8	1-2	0-0	0-0	0-0-0	1	2	0	1	0	0	0
Indiana	7	1-2	0-0	2-2	0-0-0	2	4	0	0	0	0	-10
Northwestern	9	0-3	0-1	0-0	0-2-2	2	0	0	2	0	0	-6
Nebraska	2	0-0	0-0	0-0	0-0-0	0	0	0	0	0	0	-1
MSU	6	0-2	0-0	0-0	1-0-1	0	0	0	0	0	0	-2
Wisconsin												
Penn State												
Michigan												

\* Started

^Big Ten Tournament

## 21 | Emily Monson

2023-24	Min.	FG	3FG	FT	O-D-T	PF	Pts	A	To	S	B	+/-
UCLA	4	1-1	1-1	1-2	0-0-0	0	4	0	2	1	0	-2
Southern	3	0-0	0-0	0-0	1-0-1	0	0	0	1	0	0	-1
Texas A&M	DNP											
Florida	3	0-1	0-1	0-0	0-0-0	0	0	0	0	0	0	4
Georgia	DNP											
USI	14	0-3	0-0	0-0	0-1-1	1	0	1	0	0	1	-6
Dayton	DNP											
Valpo	8	1-4	1-4	0-0	0-0-0	2	3	4	1	0	0	-1
SEMO	8	0-0	0-0	0-0	1-3-4	2	0	2	2	0	0	-6
Minnesota	DNP											
Notre Dame	4	0-1	0-0	0-0	0-0-0	1	0	0	0	0	0	2
Indiana State	8	1-3	1-2	0-0	0-1-1	3	3	1	0	0	0	-6
Wisconsin	3	0-2	0-1	0-0	0-0-0	1	0	0	0	0	0	-1
Rutgers	DNP											
Iowa	DNP											
Maryland	3	1-1	0-0	0-0	0-1-1	0	2	0	0	0	0	-2
Penn State	2	0-0	0-0	0-0	0-0-0	1	0	0	0	0	0	-1
Indiana	DNP											
MSU	5	0-4	0-2	0-0	0-1-1	0	0	0	1	0	0	-6
Ohio State	DNP											
Nebraska	2	0-0	0-0	0-0	0-0-0	0	0	0	1	0	0	-1
Illinois	DNP											
Indiana	DNP											
Northwestern	4	0-2	0-0	0-0-0	0	0	0	0	0	0	0	-6
Nebraska	1	0-0	0-0	0-0-0	0	0	0	0	0	0	0	0
MSU	DNP											
Wisconsin												
Penn State												
Michigan												

\* Started

^Big Ten Tournament

## 20 | Mary Ashley Stevenson

2023-24	Min.	FG	3FG	FT	O-D-T	PF	Pts	A	To	S	B	+/-
UCLA	27	3-5	0-1	2-2	2-0-2	3	8	2	3	1	1	-25
Southern*	28	5-9	0-1	3-3	1-4-5	2	13	0	4	0	1	22
Texas A&M*	9	1-3	0-0	0-0	2-1-3	3	2	0	0	0	0	-1
Florida*	26	2-8	0-2	2-4	4-2-6	3	6	0	0	0	1	2
Georgia*	32	4-11	0-1	3-3	2-1-3	1	11	2	3	1	0	-12
USI*	26	3-5	0-0	6-7	0-1-1	3	12	1	1	1	0	26
Dayton*	32	3-8	0-1	2-3	2-5-7	1	8	2	3	1	0	11
Valpo*	27	5-8	0-0	4-6	2-8-10	3	14	1	3	0	2	20
SEMO*	29	4-11	0-0	3-5	2-5-7	1	11	2	2	0	1	28
Minnesota*	36	3-12	1-5	1-2	2-9-11	3	8	0	2	0	1	1
Notre Dame*	32	2-10	0-1	1-2	2-4-6	3	5	0	2	1	0	-28
Indiana State	31	5-9	0-1	1-3	2-6-8	1	11	2	2	1	0	15
Wisconsin*	28	5-13	0-2	3-3	5-3-8	2	13	1	1	1	0	36
Rutgers*	23	3-9	0-1	1-2	2-4-6	3	7	2	1	1	0	5
Iowa*	33	3-6	0-1	2-2	1-2-3	3	8	0	2	0	0	-18
Maryland*	31	3-9	0-0	2-2	1-2-3	2	8	1	4	0	0	-12
Penn State*	35	3-11	0-1	7-8	4-3-7	2	13	1	3	2	1	-12
Indiana*	30	6-13	0-0	1-1	1-1-2	2	13	1	2	2	0	-12
MSU*	18	2-6	0-0	1-1	1-1-2	5	5	0	2	0	1	-19
Ohio State*	18	4-8	0-0	4-4	5-2-7	4	12	1	2	0	0	1
Nebraska*	22	1-3	0-0	0-0	0-1-1	5	12	1	1	0	0	-10
Illinois*	35	8-15	0-0	9-9	4-5-9	3	25	0	3	1	0	6
Indiana*	30	7-9	1-1	1-2	0-1-1	3	16	1	2	1	1	-22
Northwestern*	21	4-7	0-0	0-0	2-3-5	3	8	1	4	0	0	15
Nebraska*	32	4-10	0-0	8-8	1-3-4	2	16	0	1	0	1	-17
MSU*	30	4-7	0-0	0-0	0-1-1	2	8	0	2	1	0	-2
Wisconsin												
Penn State												
Michigan												

\* Started

^Big Ten Tournament

## 23 | Abbey Ellis

2023-24	Min.	FG	3FG	FT	O-D-T	PF	Pts	A	To	S	B	+/-
UCLA*	22	4-8	0-3	2-2	0-2-2	0	10	0	4	1	0	-9
Southern*	28	3-11	1-6	7-9	0-4-4	3	14	4	3	3	0	14
Texas A&M*	34	9-18	2-4	0-0	0-0-0	2	20	2	1	1	0	8
Florida*	36	3-13	1-9	7-7	0-5-5	4	14	1	4	3	0	-4
Georgia*	30	4-12	1-4	2-2	3-3-6	1	11	1	4	0	0	-2
USI*	21	7-11	1-3	4-4	1-5-6	2	19	7	1	1	0	38
Dayton*	34	5-13	3-6	8-10	1-1-2	2	21	0	1	1	0	10
Valpo*	26	5-11	1-4	0-0	1-3-4	2	11	2	3	1	0	11
SEMO*	27	4-9	2-5	3-3	2-1-3	2	13	1	2	2	0	22
Minnesota*	39	4-9	1-2	1-2	0-3-3	0	10	1	2	3	0	-3
Notre Dame*	31	4-14	0-3	0-0	0-2-2	2	8	2	4	2	0	-35
Indiana State*	33	9-13	3-4	9-11	1-2-3	2	28	3	5	4	1	24
Wisconsin*	20	5-9	2-4	0-1	0-5-5	5	12	3	2	1	0	23
Rutgers*	31	5-12	1-3	2-2	1-2-3	2	13	2	1	0	1	-2
Iowa*	37	5-11	1-4	4-4	1-2-3	2	15	6	2	5	0	-22
Maryland*	29	4-10	1-3	1-2	0-2-2	1	10	4	2	1	0	-9
Penn State*	17	3-10	1-5	0-0	0-1-1	2	7	1	1	0	0	0
Indiana*	35	4-12	1-4	1-1	1-4-5	1	10	3	0	1	0	-3
MSU*	29	4-11	2-6	6-6	1-2-3	1	16	1	4	0	0	-17
Ohio State*	32	5-10	4-6	0-2	1-4-5	4	14	1	2	0	0	0
Nebraska*	35	6-12	1-3	2-2	2-4-6	1	15	1	0	1	1	-17
Illinois*	43	2-12	1-7	0-0	2-4-6	2	5	1	0	2	0	4
Indiana*	28	1-7	0-2	0-0	0-3-3	0	2	1	1	1	0	-34
Northwestern*	26	5-10	2-5	2-2	2-2-4	1	14	3	1	0	0	26
Nebraska*	34	5-14	1-4	5-8	2-2-4	2	16	0	0	1	0	-19
MSU*	34	8-19	1-5	5-5	1-3-4	2	22	1	0	0	0	-6
Wisconsin												
Penn State												
Michigan												

\* Started

^Big Ten Tournament



# 2023-24 PURDUE WOMEN'S BASKETBALL GAME NOTES

## 31 | Sophie Swanson

2023-24	Min.	FG	3FG	FT	O-D-T	PF	Pts	A	To	S	B	+/-
UCLA	DNP											
Southern	DNP											
Texas A&M	DNP											
Florida	DNP											
Georgia	DNP											
USI	8	1-3	0-2	0-0	0-2-2	0	2	0	1	0	0	-8
Dayton	DNP											
Valpo	9	3-6	2-4	0-0	1-2-3	1	8	0	1	1	0	3
SEMO	7	3-8	1-5	0-0	1-2-3	1	7	0	0	1	0	-1
Minnesota	DNP											
Notre Dame	12	1-5	1-3	0-0	0-2-2	0	3	1	1	0	0	-1
Indiana State	15	4-6	2-3	0-0	1-1-2	2	10	2	3	0	0	9
Wisconsin	11	4-6	1-3	0-0	0-1-1	2	9	0	2	0	0	16
Rutgers	9	2-5	0-2	6-8	0-0-0	1	6	0	1	0	0	0
Iowa	5	0-2	0-0	0-0	0-0-0	0	0	0	0	0	0	-3
Maryland	12	3-6	2-4	0-0	0-0-0	2	8	1	1	1	0	-12
Penn State	16	1-4	1-3	3-4	1-0-1	0	6	0	2	0	0	-9
Indiana	2	0-0	0-0	0-0	0-0-0	0	0	0	1	0	0	-2
MSU	16	4-11	4-8	0-0	0-0-0	2	12	0	1	0	0	-19
Ohio State	2	1-2	1-2	0-0	0-0-0	0	3	0	1	0	0	-2
Nebraska	6	1-3	1-3	0-0	0-2-2	1	3	0	1	0	0	1
Illinois	1	0-0	0-0	0-0	0-0-0	0	0	0	0	0	0	0
Indiana	15	4-8	3-6	0-0	0-1-1	0	11	0	1	0	1	-12
Northwestern	14	3-7	1-5	1-2	0-2-2	0	8	1	1	2	0	-5
Nebraska	7	2-3	1-2	0-0	0-0-0	0	5	0	0	0	0	-1
MSU	24	6-11	5-9	2-2	1-1-2	2	19	2	2	0	0	-1
Wisconsin												
Penn State												
Michigan												

\* Started

^Big Ten Tournament

## 33 | Madison Layden

2023-24	Min.	FG	3FG	FT	O-D-T	PF	Pts	A	To	S	B	+/-
UCLA*	28	0-3	0-2	0-0	0-1-1	0	0	1	1	0	0	-33
Southern*	36	5-6	4-5	7-8	1-3-4	4	21	2	1	3	0	17
Texas A&M*	27	2-8	1-5	3-4	1-4-5	3	8	0	2	2	1	-2
Florida*	23	0-5	0-3	0-0	0-2-2	1	0	0	2	0	0	-7
Georgia*	32	5-12	4-8	0-0	0-2-2	4	14	1	2	1	0	2
USI*	19	6-6	4-4	0-0	0-2-2	2	16	0	1	0	1	21
Dayton*	32	3-5	3-5	4-4	0-5-5	1	13	2	3	2	1	4
Valpo*	32	4-10	2-7	0-0	0-4-4	0	10	2	0	3	1	22
SEMO*	30	6-12	4-8	0-1	0-2-2	2	16	1	0	2	1	24
Minnesota*	37	6-8	4-6	1-2	0-1-1	2	17	1	6	1	0	-3
Notre Dame*	23	1-6	0-2	0-0	1-2-3	2	2	2	4	1	1	-26
Indiana State*	34	3-8	3-7	2-2	2-3-5	1	11	3	0	2	1	20
Wisconsin*	30	5-7	4-5	0-0	1-3-4	3	14	5	0	3	2	39
Rutgers*	33	7-14	2-4	3-3	2-0-2	4	19	3	1	0	0	2
Iowa*	32	2-5	1-2	5-6	0-6-6	3	10	1	2	0	1	-32
Maryland*	30	5-12	3-5	0-0	0-3-3	3	13	2	1	2	1	-18
Penn State*	21	0-4	0-3	0-0	0-4-4	3	0	0	2	1	1	-21
Indiana*	35	4-8	2-4	0-2	0-2-2	4	10	1	1	1	0	-8
MSU*	17	3-3	2-2	1-2	0-2-2	0	9	0	2	1	0	-13
Ohio State*	34	0-4	0-3	2-2	0-3-3	2	2	2	1	0	0	-7
Nebraska*	30	2-8	1-5	2-2	0-3-3	2	7	3	0	1	1	-14
Illinois*	41	5-17	2-9	2-2	0-5-5	3	14	2	0	1	0	1
Indiana*	26	1-7	0-1	4-4	0-2-2	2	6	3	2	0	0	-25
Northwestern*	29	5-11	5-10	1-2	0-7-7	0	16	5	3	2	1	35
Nebraska*	33	3-10	2-8	0-0	0-1-1	3	8	3	1	0	2	-13
MSU												
Wisconsin												
Penn State												
Michigan												

\* Started

^Big Ten Tournament

## 32 | Alaina Harper

2023-24	Min.	FG	3FG	FT	O-D-T	PF	Pts	A	To	S	B	+/-
UCLA	3	0-0	0-0	0-0	0-0-0	1	0	0	0	0	0	-3
Southern	2	0-0	0-0	0-0	0-0-0	0	0	0	0	0	0	2
Texas A&M	3	0-0	0-0	0-0	0-1-1	1	0	0	1	0	0	1
Florida	2	0-0	0-0	0-0-0	0	0	0	0	0	0	0	0
Georgia	11	0-0	0-0	0-0	0-1-1	0	0	0	1	0	0	-5
USI	14	1-1	0-0	0-0	2-0-2	0	2	0	0	0	0	4
Dayton	6	0-0	0-0	0-0	0-1-1	1	0	0	1	0	0	-10
Valpo	DNP											
SEMO	10	2-2	0-0	0-0	1-1-2	0	4	0	0	0	0	-4
Minnesota	6	0-0	0-0	0-0	0-0-0	1	0	0	1	0	0	-3
Notre Dame	5	0-0	0-0	0-0	0-1-1	0	0	0	0	0	0	-7
Indiana State	10	1-2	0-0	0-0	0-1-1	3	2	0	2	0	1	-6
Wisconsin	5	0-0	0-0	0-0	0-2-2	0	0	0	0	0	0	-3
Rutgers	2	0-0	0-0	0-0	0-0-0	0	0	0	0	0	0	-2
Iowa	DNP											
Maryland	5	0-0	0-0	0-0	1-1-2	1	0	0	0	0	0	-1
Penn State	2	1-1	0-0	0-0	0-0-0	0	2	0	1	0	0	2
Indiana	DNP											
MSU	5	0-0	0-0	2-4	0-2-2	0	2	0	0	0	0	-3
Ohio State	DNP											
Nebraska	8	0-0	0-0	0-0	0-3-3	0	0	0	0	0	1	2
Illinois	1	0-0	0-0	0-0	0-0-0	0	0	0	0	0	0	-2
Indiana	4	0-0	0-0	0-0	0-0-0	0	0	0	0	0	0	-5
Northwestern	6	1-2	0-0	1-2	0-1-1	1	3	0	0	0	0	-3
Nebraska	2	1-1	0-0	0-0	0-0-0	0	2	0	0	0	0	-5
MSU	DNP											
Wisconsin												
Penn State												
Michigan												

\* Started

^Big Ten Tournament

## 34 | Caitlyn Harper

2023-24	Min.	FG	3FG	FT	O-D-T	PF	Pts	A	To	S	B	+/-
UCLA*	31	3-8	2-6	2-2	0-2-2	2	10	0	1	1	1	-25
Southern*	32	5-8	0-2	0-0	1-6-7	3	10	3	4	0	0	21
Texas A&M*	37	5-8	2-3	2-2	3-8-11	0	14	1	1	1	0	13
Florida*	36	6-12	0-3	0-0	0-5-5	1	12	0	1	1	0	0
Georgia*	31	2-4	1-2	2-2	2-2-4	3	7	0	0	2	1	-3
USI*	18	2-5	0-1	2-2	2-2-4	0	6	2	0	1	0	31
Dayton*	27	6-10	1-1	0-0	0-4-4	4	13	1	0	3	1	13
Valpo*	12	0-1	0-0	0-0	0-0-0	0	0	0	4	0	0	-4
SEMO*	29	9-13	2-4	2-4	1-4-5	0	22	1	2	1	1	28
Minnesota*	32	7-11	0-2	2-2	0-3-3	4	16	4	1	1	2	4
Notre Dame*	26	2-5	1-2	0-0	0-2-2	1	5	0	1	1	0	-35
Indiana State*	19	1-4	1-3	0-0	1-2-3	3	3	3	1	1	1	20
Wisconsin*	27	7-8	1-1	1-2	1-1-2	1	16	0	1	1	0	32
Rutgers*	28	4-9	1-2	0-0	3-2-5	4	9	1	2	0	0	3
Iowa*	32	4-10	2-8	3-3	2-2-4	3	13	3	0	0	4	-16
Maryland*	31	7-10	0-1	0-0	1-2-3	0	14	1	2	1	1	-16
Penn State*	34	5-8	0-0	3-3	2-6-8	3	13	4	4	1	1	-14
Indiana*	38	6-11	1-4	5-6	2-4-6	0	18	2	3	1	1	-6
MSU*	20	3-7	0-0	0-0	0-0-0	1	6	0	4	1	4	-13
Ohio State*	24	2-7	0-4	4-4	0-4-4	3	8	2	2	1	0	5
Nebraska*	25	5-11	0-2	0-0	1-3-4	0	10	0	3	1	0	-16
Illinois*	29	6-9	1-1	3-3	0-0-0	4	16	0	2	1	1	2
Indiana*	32	4-6	1-2	4-4	0-4-4	3	13	0	2	1	1	-19
Northwestern*	29	8-11	1-2	0-0	3-3-6	1	17	2	2	2	1	27
Nebraska*	27	2-6	0-1	0-0	1-1-2	2	4	2	2	0	0	-5
MSU*	21	1-7	0-1	0-0	2-1-3	3	2	0	1	0	0	-9
Wisconsin												
Penn State												
Michigan												

\* Started

^Big Ten Tournament





## 2023-24 Purdue Women's Basketball Combined Team Statistics All games

Page 1/1  
as of Feb 22, 2024

### Game Records

Record	Overall	Home	Away	Neutral
ALL GAMES	11-15	9-5	2-8	0-2
CONFERENCE	4-11	3-5	1-6	0-0
NON-CONFERENCE	7-4	6-0	1-2	0-2

### Score by Periods

Team	1st	2nd	3rd	4th	OT	TOT
Purdue	462	374	480	436	13	1765
Opponents	419	413	470	495	8	1805

### Team Box Score

No.	Player				Total		3-Point		F-Throw		Rebounds													
		GP-GS	MIN	AVG	FG-FGA	FG%	3FG-3FGA	3FG%	FT-FTA	FT%	OFF	DEF	TOT	AVG	PF	DQ	A	TO	BLK	STL	PTS	AVG		
23	ELLIS, Abbey	26-26	783:54	30.1	122-301	.405	35-114	.307	71-85	.835	23	71	94	3.6	48	1	52	50	3	35	350	13.5		
34	HARPER, Caitlyn	26-26	718:55	27.7	112-209	.536	18-58	.310	35-39	.897	28	73	101	3.9	49	0	32	46	21	24	277	10.7		
33	LAYDEN, Madison	26-26	778:46	30.0	87-209	.416	56-131	.427	37-46	.804	8	77	85	3.3	56	0	46	39	17	29	267	10.3		
20	STEVENSON , Mary Ashley	26-25	712:53	27.4	97-225	.431	2-19	.105	67-82	.817	50	78	128	4.9	68	2	22	55	11	15	263	10.1		
2	JONES, Rashunda	22-0	403:27	18.3	58-161	.360	8-29	.276	45-62	.726	9	44	53	2.4	53	2	38	39	2	17	169	7.7		
31	SWANSON, Sophie	19-0	186:04	9.8	43-96	.448	26-63	.413	8-12	.667	5	17	22	1.2	14	0	7	20	1	5	120	6.3		
10	TERRY, Jeanae	26-26	774:51	29.8	48-120	.400	2-5	.400	33-47	.702	57	136	193	7.4	60	1	162	78	7	45	131	5.0		
3	SMITH, Jayla	25-1	324:17	13.0	36-105	.343	4-25	.160	13-20	.650	11	25	36	1.4	14	0	17	20	8	7	89	3.6		
15	REYNOLDS, Mila	19-0	139:07	7.3	14-40	.350	3-14	.214	9-11	.818	4	12	16	0.8	19	0	3	14	3	3	40	2.1		
11	LAYDEN, McKenna	22-0	226:10	10.3	10-33	.303	7-25	.280	3-4	.750	4	23	27	1.2	9	0	16	6	1	9	30	1.4		
32	HARPER, Alaina	21-0	109:05	5.2	7-9	.778	0-0	.000	3-6	.500	4	15	19	0.9	9	0	0	7	2	0	17	0.8		
21	MONSON, Emily	15-0	67:31	4.5	4-22	.182	3-13	.231	1-2	.500	2	7	9	0.6	11	0	8	7	1	2	12	0.8		
Team											58	60	118					13						
Total		26	5225		638-1530	.417	164-496	.331	325-416	.781	263	638	901	34.7	410	6	403	394	77	191	1765	67.9		
Opponents		26	5225		663-1560	.425	174-493	.353	305-397	.768	272	653	925	35.6	438	9	382	397	95	196	1805	69.4		

### Team Statistics

	PURDUE	OPP
<b>Scoring</b>	<b>1765</b>	<b>1805</b>
Points per game	67.9	69.4
Scoring margin	-1.5	-
<b>Field goals-att</b>	<b>638-1530</b>	<b>663-1560</b>
Field goal pct	.417	.425
<b>3 point fg-att</b>	<b>164-496</b>	<b>174-493</b>
3-point FG pct	.331	.353
3-pt FG made per game	6.3	6.7
<b>Free throws-att</b>	<b>325-416</b>	<b>305-397</b>
Free throw pct	.781	.768
F-Throws made per game	12.5	11.7
<b>Rebounds</b>	<b>901</b>	<b>925</b>
Rebounds per game	34.7	35.6
Rebounding margin	-0.9	-
<b>Assists</b>	<b>403</b>	<b>382</b>
Assists per game	15.5	14.7
<b>Turnovers</b>	<b>394</b>	<b>397</b>
Turnovers per game	15.2	15.3
Turnover margin	+0.1	-
Assist/turnover ratio	1.0	1.0
<b>Steals</b>	<b>191</b>	<b>196</b>
Steals per game	7.3	7.5
<b>Blocks</b>	<b>77</b>	<b>95</b>
Blocks per game	3.0	3.7
<b>Winning streak</b>	<b>0</b>	<b>-</b>
Home win streak	0	-
<b>Attendance</b>	<b>85423</b>	<b>55270</b>
Home games-Avg/Game	14-6102	10-5527
Neutral site-Avg/Game	-	2-358

### Team Results

Date	Opponent		Score	Att.
11/06/2023	at UCLA	L	49-92	6783
11/12/2023	Southern U.	W	67-50	5002
11/16/2023	Texas A&M	W	72-58	5223
11/20/2023	vs Florida	L	49-52	437
11/22/2023	vs Georgia	L	57-65	278
11/26/2023	Southern Ind.	W	95-57	3683
12/01/2023	at Dayton	W	67-59	3250
12/03/2023	Valparaiso	W	83-56	5305
12/06/2023	Southeast Mo. St.	W	83-57	3412
12/10/2023	at Minnesota	L	58-60	3834
12/17/2023	at Notre Dame	L	39-76	9149
12/20/2023	Indiana St.	W	79-63	7177
12/30/2023	Wisconsin	W	89-50	5540
01/02/2024	Rutgers	W	77-76	3263
01/10/2024	Iowa	L	71-96	14876
01/14/2024	at Maryland	L	66-88	7231
01/18/2024	at Penn St.	L	67-80	2266
01/21/2024	Indiana	L	68-74	11796
01/24/2024	at Michigan St.	L	70-97	3096
01/28/2024	Ohio St.	L	68-71	7132
01/31/2024	at Nebraska	L	54-68	4408
02/05/2024	Illinois	Wot	77-72	3953
02/11/2024	at Indiana	L	62-95	13304
02/14/2024	at Northwestern	W	74-48	1949
02/17/2024	Nebraska	L	65-77	5205
02/21/2024	Michigan St.	L	59-68	3856



## 2023-24 Purdue Women's Basketball Combined Team Statistics In Conference games

Page 1/1  
as of Feb 22, 2024

### Game Records

Record	Overall	Home	Away	Neutral
ALL GAMES	4-11	3-5	1-6	0-0
CONFERENCE	4-11	3-5	1-6	0-0
NON-CONFERENCE	0-0	0-0	0-0	0-0

### Score by Periods

Team	1st	2nd	3rd	4th	OT	TOT
Purdue	268	202	278	264	13	1025
Opponents	248	261	296	307	8	1120

### Team Box Score

No.	Player				Total		3-Point		F-Throw		Rebounds											
		GP-GS	MIN	AVG	FG-FGA	FG%	3FG-3FGA	3FG%	FT-FTA	FT%	OFF	DEF	TOT	AVG	PF	DQ	A	TO	BLK	STL	PTS	AVG
23	ELLIS, Abbey	15-15	463:50	30.9	66-168	.393	20-63	.317	29-37	.784	14	43	57	3.8	26	1	29	18	2	16	181	12.1
34	HARPER, Caitlyn	15-15	425:20	28.4	71-131	.542	8-31	.258	25-27	.926	18	36	54	3.6	32	0	21	31	16	12	175	11.7
20	STEVENSON, Mary Ashley	15-15	417:37	27.8	60-138	.435	2-11	.182	40-44	.909	29	41	70	4.7	44	2	10	32	5	9	162	10.8
33	LAYDEN, Madison	15-15	463:13	30.9	52-128	.406	31-75	.413	21-27	.778	3	47	50	3.3	36	0	32	23	10	13	156	10.4
31	SWANSON, Sophie	14-0	136:29	9.7	31-68	.456	20-46	.435	8-12	.667	2	8	10	0.7	10	0	4	14	1	3	90	6.4
10	TERRY, Jeanae	15-15	480:16	32.0	37-81	.457	1-4	.250	14-22	.636	41	84	125	8.3	43	1	102	53	3	33	89	5.9
2	JONES, Rashunda	14-0	244:37	17.5	27-92	.293	3-15	.200	25-36	.694	6	22	28	2.0	32	1	26	19	0	11	82	5.9
3	SMITH, Jayla	15-0	154:48	10.3	17-46	.370	3-9	.333	5-8	.625	5	11	16	1.1	5	0	10	7	3	4	42	2.8
15	REYNOLDS, Mila	14-0	87:32	6.3	10-29	.345	2-10	.200	5-5	1.000	3	4	7	0.5	10	0	1	8	2	3	27	1.9
11	LAYDEN, McKenna	11-0	88:32	8.0	4-13	.308	2-10	.200	0-0	.000	2	3	5	0.5	4	0	10	4	0	3	10	0.9
32	HARPER, Alaina	11-0	44:18	4.0	3-4	.750	0-0	.000	3-6	.500	1	9	10	0.9	3	0	0	2	1	0	9	0.8
21	MONSON, Emily	7-0	18:29	2.6	1-9	.111	0-5	.000	0-0	.000	0	2	2	0.3	2	0	0	1	0	1	2	0.3
Team											32	35	67					4				
<b>Total</b>		<b>15</b>	<b>3025</b>		<b>379-907</b>	<b>.418</b>	<b>92-279</b>	<b>.330</b>	<b>175-224</b>	<b>.781</b>	<b>156</b>	<b>345</b>	<b>501</b>	<b>33.4</b>	<b>247</b>	<b>5</b>	<b>245</b>	<b>216</b>	<b>43</b>	<b>108</b>	<b>1025</b>	<b>68.3</b>
<b>Opponents</b>		<b>15</b>	<b>3025</b>		<b>408-897</b>	<b>.455</b>	<b>118-312</b>	<b>.378</b>	<b>186-238</b>	<b>.782</b>	<b>143</b>	<b>385</b>	<b>528</b>	<b>35.2</b>	<b>243</b>	<b>7</b>	<b>256</b>	<b>214</b>	<b>58</b>	<b>102</b>	<b>1120</b>	<b>74.7</b>

### Team Statistics

	PURDUE	OPP
<b>Scoring</b>	<b>1025</b>	<b>1120</b>
Points per game	68.3	74.7
Scoring margin	-6.3	-
<b>Field goals-att</b>	<b>379-907</b>	<b>408-897</b>
Field goal pct	.418	.455
<b>3 point fg-att</b>	<b>92-279</b>	<b>118-312</b>
3-point FG pct	.330	.378
3-pt FG made per game	6.1	7.9
<b>Free throws-att</b>	<b>175-224</b>	<b>186-238</b>
Free throw pct	.781	.782
F-Throws made per game	11.7	12.4
<b>Rebounds</b>	<b>501</b>	<b>528</b>
Rebounds per game	33.4	35.2
Rebounding margin	-1.8	-
<b>Assists</b>	<b>245</b>	<b>256</b>
Assists per game	16.3	17.1
<b>Turnovers</b>	<b>216</b>	<b>214</b>
Turnovers per game	14.4	14.3
Turnover margin	-0.1	-
Assist/turnover ratio	1.1	1.2
<b>Steals</b>	<b>108</b>	<b>102</b>
Steals per game	7.2	6.8
<b>Blocks</b>	<b>43</b>	<b>58</b>
Blocks per game	2.9	3.9
<b>Winning streak</b>	<b>0</b>	<b>-</b>
Home win streak	0	-
<b>Attendance</b>	<b>55621</b>	<b>36088</b>
Home games-Avg/Game	8-6953	7-5155
Neutral site-Avg/Game	-	0-0

### Team Results

Date	Opponent		Score	Att.
12/10/2023	at Minnesota	L	58-60	3834
12/30/2023	Wisconsin	W	89-50	5540
01/02/2024	Rutgers	W	77-76	3263
01/10/2024	Iowa	L	71-96	14876
01/14/2024	at Maryland	L	66-88	7231
01/18/2024	at Penn St.	L	67-80	2266
01/21/2024	Indiana	L	68-74	11796
01/24/2024	at Michigan St.	L	70-97	3096
01/28/2024	Ohio St.	L	68-71	7132
01/31/2024	at Nebraska	L	54-68	4408
02/05/2024	Illinois	Wot	77-72	3953
02/11/2024	at Indiana	L	62-95	13304
02/14/2024	at Northwestern	W	74-48	1949
02/17/2024	Nebraska	L	65-77	5205
02/21/2024	Michigan St.	L	59-68	3856



# 2023-24 PURDUE WOMEN'S BASKETBALL GAME NOTES



Official Basketball Box Score - Final

## Michigan St. at Purdue

02/21/24 Mackey Arena, West Lafayette  
2023-24 Women's Basketball

Game Time: 7:00 PM

Game Duration: 1:53

Attendance: 3,856

Officials: Bryan Enterline, Ifeyinwa Seales, Ashlee Goode

Michigan St. - 68

Record: 19-7 (9-6)

NO.	Name	Min	FG M-A	3P M-A	FT M-A	Rebounds OR DR TOT	Fouls PF FD	TP	AS	TO	ST	Blocks BS BA	+/-
11	Jocelyn Tate	F 23:14	2-10	0-1	0-0	2 1 3	3 2	4	0	0	2	0 1	-2
0	DeeDee Hagemann	G 37:25	3-6	1-2	6-7	0 3 3	0 8	13	11	0	0	1 0	14
2	Abbey Kimball	G 17:19	0-4	0-3	0-0	0 1 1	2 0	0	0	1	0	0 0	2
22	Moiria Joiner	G 33:01	3-7	2-4	2-2	2 5 7	2 1	10	1	2	1	0 1	9
40	Julia Ayrault	G 31:08	6-14	0-3	0-2	3 5 8	1 1	12	4	3	1	5 0	20
1	Tory Ozment	25:38	5-12	0-3	3-3	0 4 4	2 4	13	0	3	0	0 0	0
4	Theryn Hallock	29:30	6-9	4-6	0-0	0 1 1	1 0	16	0	2	1	0 0	-1
24	Lauren Ross	02:45	0-1	0-1	0-0	0 1 1	0 1	0	0	0	0	0 0	3
Team						2 6 8		0		2			
<b>Totals</b>			25-63	7-23	11-14	9 27 36	11 17	68	16	13	5	6 2	9

Technical Fouls::NONE

Shooting By Period		
1 <sup>st</sup> FG%	6-14	42.9%
3PT%	2-5	40.0%
FT%	2-3	66.7%
2 <sup>nd</sup> FG%	7-16	43.8%
3PT%	2-6	33.3%
FT%	3-5	60%
3 <sup>rd</sup> FG%	4-18	22.2%
3PT%	1-7	14.3%
FT%	2-2	100%
4 <sup>th</sup> FG%	8-15	53.3%
3PT%	2-5	40.0%
FT%	4-4	100%
GM FG%	25-63	39.7%
3PT%	7-23	30.4%
FT%	11-14	78.6%

Dead Ball Rebounds: 6, 0

Purdue - 59

Record: 11-15 (4-11)

NO.	Name	Min	FG M-A	3P M-A	FT M-A	Rebounds OR DR TOT	Fouls PF FD	TP	AS	TO	ST	Blocks BS BA	+/-
20	Mary Ashley Stevenson	F 29:33	4-7	0-0	0-0	0 1 1	2 3	8	0	2	1	0 1	-2
34	Caitlyn Harper	F 21:17	1-7	0-1	0-0	2 1 3	3 2	2	0	1	0	0 4	-9
10	Jeanae Terry	G 33:07	0-3	0-0	0-0	2 13 15	2 0	0	7	7	3	0 0	-2
23	Abbey Ellis	G 33:48	8-19	1-5	5-5	1 3 4	2 4	22	1	0	0	0 1	-6
33	Madison Layden	G 32:35	3-10	2-8	0-0	0 1 1	3 0	8	3	1	0	2 0	-13
2	Rashunda Jones	14:40	0-1	0-0	0-0	0 2 2	3 1	0	1	2	0	0 0	-2
15	Mila Reynolds	06:07	0-2	0-0	0-0	1 0 1	0 0	0	0	0	0	0 0	-2
31	Sophie Swanson	24:02	6-11	5-9	2-2	1 1 2	2 1	19	2	2	0	0 0	-1
3	Jayla Smith	04:51	0-1	0-0	0-0	0 1 1	0 0	0	1	0	0	0 0	-8
Team						4 3 7		0		0			
<b>Totals</b>			22-61	8-23	7-7	11 26 37	18 11	59	15	15	4	2 6	-9

Technical Fouls:Coach 2<sup>nd</sup>0:31

Shooting By Period		
1 <sup>st</sup> FG%	4-16	25.0%
3PT%	1-5	20.0%
FT%	0-0	0%
2 <sup>nd</sup> FG%	5-14	35.7%
3PT%	2-6	33.3%
FT%	0-0	0%
3 <sup>rd</sup> FG%	5-13	38.5%
3PT%	1-4	25.0%
FT%	4-4	100%
4 <sup>th</sup> FG%	8-18	44.4%
3PT%	4-8	50.0%
FT%	3-3	100%
GM FG%	22-61	36.1%
3PT%	8-23	34.8%
FT%	7-7	100.0%

Dead Ball Rebounds: 1, 0

	MST	PUR
Biggest lead	19 (3 <sup>rd</sup> 8:03)	4 (1 <sup>st</sup> 7:58)
Best Scoring Run	11 (3 <sup>rd</sup> 8:03)	11 (4 <sup>th</sup> 2:03)
Lead Changes	1	
Times Tied	1	
Time with Lead	33:28	04:41

	MST	PUR
Points from		
Turnovers	18	9
Paint	36	22
Second Chance	10	9
Fast Breaks	6	4
Bench	29	19

Period by Period Scoring					
	1st	2nd	3rd	4th	TOT
MST	16	19	11	22	68
PUR	9	12	15	23	59





# 2023-24 PURDUE WOMEN'S BASKETBALL GAME NOTES



## PURDUE BOILERMAKERS

Overall - 11-15 | BIG - 4-11 | Streak - L2 | AP - - | Coaches - - | NET - 77 | Home - 9-5 | Away - 2-8 | Neutral - 0-2 | Post - 0-0  
 Offense - 67.9 | Defense - 69.4 | Scoring Margin - -1.5 | Field Goal% - .417 | Field Goal% Defense - .425 | 3-Pt.%(PG) - .331 (6.3)  
 Opp 3-Pt.%(PG) - .353 (6.7) | FT % (PG) - .781 (12.5) | Rebounding - 34.7 | Rebound Margin - -0.9 | Assists - 15.5 | Turnovers - 15.2 | TO Margin - 0.1

### 2023-24 SCHEDULE

Opponent	Date/Result
Quincy (ex)	W, 106-45
at #4 UCLA	L, 92-49
Southern	W, 67-50
Texas A&M	W, 72-58
vs. Florida (1)	L, 52-49
vs. Georgia (1)	L, 65-57
Southern Indiana	W, 95-57
Dayton	W, 67-59
Valparaiso	W, 83-56
SEMO	W, 83-57
at Minnesota	L, 60-58
at Notre Dame	L, 76-39
Indiana State	W, 79-63
Wisconsin	W, 89-50
Rutgers	W, 77-76
Iowa	L, 96-71
at Maryland	L, 88-66
at Penn State	L, 80-67
Indiana	L, 74-68
at Michigan State	L, 97-70
Ohio State	L, 71-68
at Nebraska	L, 68-54
Illinois	W, 77-72 (OT)
at Indiana	L, 95-62
at Northwestern	W, 74-48
Nebraska	L, 77-65
Michigan State	L, 68-59
at Wisconsin	Feb. 25
Penn State	Feb. 28
at Michigan	March 3
Big Ten Tournament	March 6-10

- 1 - Baha Mar Pink Flamingo Championship (The Bahamas)  
 2 - BIG Tournament (Minneapolis)

### HEAD COACH KATIE GEARLDS

Purdue Record - 47-41 (2nd)  
 Career Record - 275-91 (10th)  
 Alma Mater - Purdue '07  
 Highlights - 2x NAIA National Champ, 3x NAIA Coach of the Year, 8 years at Marian, 7th Overall to Seattle in 2007 Draft, Legend of Mackey, 2007 All-America

### COACHING STAFF

Asso. Head Coach Kelly Komara  
 Assistant Coach Mark Stephens  
 Assistant Coach Alex Guyton

### PRONUNCIATIONS

1 - Amiyah Reynolds ah-MY-yah  
 2 - Rashunda Jones ra-SHUN-da  
 15 - Mila Reynolds MEE-la  
 32 - Alaina Harper ah-LAY-na  
 Katie Gearlds soft g  
 (like the first name)  
 Kelly Komara kom-AIR-ah

### 1 • Amiyah Reynolds • Fr. • G • 6-1 • South Bend, Ind • South Bend Washington

GP/GS	MIN.	PPG	RPG	APG	STLS	BLKS	FG%	3P%	FT%
-	-	-	-	-	-	-	-	-	-

LAST GAME: Out for the year due to high school injury, running the scout team

### 2 • Rashunda Jones • Fr. • G • 5-8 • South Bend, Ind. • South Bend Washington

GP/GS	MIN.	PPG	RPG	APG	STLS	BLKS	FG%	3P%	FT%
22/0	18.3	7.7	2.4	1.7	0.8	0.1	.360	.276	.726

LAST GAME: 2 rebs, 1 ast, 15 mins

### 3 • Jayla Smith • Jr. • G • 6-0 • Indianapolis, Ind. • Lawrence North

GP/GS	MIN.	PPG	RPG	APG	STLS	BLKS	FG%	3P%	FT%
25/1	13.0	3.6	1.4	0.7	0.3	0.3	.343	.160	.650

LAST GAME: 1 ast, 5 mins

### 10 • Jeanae Terry • 5th • G • 5-11 • Detroit, Mich. • Wayne Memorial • Illinois

GP/GS	MIN.	PPG	RPG	APG	STLS	BLKS	FG%	3P%	FT%
26/26	29.8	5.0	7.4	6.2	1.7	0.3	.400	.400	.702

LAST GAME: 15 rebs, 7 asts, 3 stls, 33 mins

### 11 • McKenna Layden • Fr. • G • 6-2 • Kokomo, Ind. • Northwestern

GP/GS	MIN.	PPG	RPG	APG	STLS	BLKS	FG%	3P%	FT%
22/0	10.3	1.4	1.2	0.7	0.4	0.0	.303	.280	.750

LAST GAME: Did not play

### 15 • Mila Reynolds • So. • F • 6-3 • South Bend, Ind. • South Bend Washington • Maryland

GP/GS	MIN.	PPG	RPG	APG	STLS	BLKS	FG%	3P%	FT%
19/0	7.3	2.1	0.8	0.2	0.2	0.2	.350	.214	.818

LAST GAME: 1 reb, 6 mins

### 20 • Mary Ashley Stevenson • Fr. • F • 6-2 • New York City, N.Y. • The Dalton School

GP/GS	MIN.	PPG	RPG	APG	STLS	BLKS	FG%	3P%	FT%
26/25	27.4	10.1	4.9	0.8	0.6	0.4	.431	.105	.817

LAST GAME: 8 pts, 1 reb, 1 stl, 30 mins

### 21 • Emily Monson • Fr. • G • 6-1 • Murfreesboro, Tenn. • Blackman

GP/GS	MIN.	PPG	RPG	APG	STLS	BLKS	FG%	3P%	FT%
15/0	4.5	0.8	0.6	0.5	0.1	0.1	.182	.231	.500

LAST GAME: Did not play

### 23 • Abbey Ellis • 5th • G • 5-6 • Melbourne, Australia • Our Lady of Mercy • Cal Poly

GP/GS	MIN.	PPG	RPG	APG	STLS	BLKS	FG%	3P%	FT%
26/26	30.1	13.5	3.6	2.0	1.3	0.1	.405	.307	.835

LAST GAME: 22 pts, 4 rebs, 1 ast, 34 mins

### 31 • Sophie Swanson • Fr. • 5-10 • Barrington, Ill. • Barrington

GP/GS	MIN.	PPG	RPG	APG	STLS	BLKS	FG%	3P%	FT%
19/0	9.8	6.3	1.2	0.4	0.3	0.1	.448	.413	.667

LAST GAME: 19 pts, 5 3pts, 2 rebs, 2 asts, 24 mins

### 32 • Alaina Harper • So. • F • 6-3 • Hartland, Wis. • Arrowhead • Grand Canyon

GP/GS	MIN.	PPG	RPG	APG	STLS	BLKS	FG%	3P%	FT%
21/0	5.2	0.8	0.9	0.0	0.0	0.1	.778	.000	.500

LAST GAME: Did not play

### 33 • Madison Layden • Jr. • G • 6-1 • Kokomo, Ind. • Northwestern

GP/GS	MIN.	PPG	RPG	APG	STLS	BLKS	FG%	3P%	FT%
26/23	30.0	10.3	3.3	1.8	1.1	0.7	.416	.427	.804

LAST GAME: 8 pts, 1 reb, 3 asts, 2 blks, 33 mins

### 34 • Caitlyn Harper • R-Sr. • F • 6-2 • Hartland, Wisc. • Arrowhead • Cal Baptist

GP/GS	MIN.	PPG	RPG	APG	STLS	BLKS	FG%	3P%	FT%
26/26	27.7	10.7	3.9	1.2	0.9	0.8	.536	.310	.897

LAST GAME: 2 pts, 3 rebs, 21 mins

• Will miss the season due to a senior-year injury

• Won 2022 3A Championship with her sister Mila and teammate Rashunda Jones  
 • No. 43 player by ESPN HoopGurlz  
 • Ended career ranked second in assists at Washington with 564 and eighth in points with 1,122

• 5th among BIG freshmen in scoring

• First Purdue rookie with three 20-pt games since 16-17  
 • 20 pts vs. A&M earned BIG Freshman of the Week  
 • Missed four games (medical), returned vs. Wisconsin  
 • 2022 IHSA 3A State Champion with the Reynolds  
 • Nicknamed Spider by HS coach - Amiyah and Mila's dad

• Made game-winning 3 against Wisconsin in Big Ten Tournament last season

• Finished second on the team with 17 blocks last year  
 • Scored in double digits in nine games and shot 45.5% from the field as a sophomore  
 • Purdue's 10th Indiana Miss Basketball

• 2nd in Big Ten in assists, 5th in rebounding

• 2nd Big Ten player to join 900-reb, 700-ast, 200-stl club  
 • 5 non-point double-doubles in Purdue career  
 • 3rd Boilermaker in history with 500 asts, 600 rebs  
 • 3rd all-time in Purdue assists (528)  
 • Only Purdue player with multiple triple-doubles

• Playing with sister Madison for the first time since 2020

• Won two sectional titles, one regional and reached the 2020 IHSA 4A State Championship Game  
 • Set Northwestern scoring record with 47 points  
 • Posted a 78-17 record in high school

• Set points career high with seven at Nebraska

• Playing with sister Amiyah and former teammate Rashunda Jones after one year apart  
 • No. 60 player, No. 16 forward ESPN HoopGurlz  
 • Totaled 2,099 career points, second in Panther history behind Skylar Diggins-Smith

• 2nd in BIG rookie scoring, 2nd rebound in league play

• 2nd in rebounding, 3rd in scoring by BIG freshmen  
 • 1 of 12 major conference freshmen with 10 PPG, 4.5 RPG  
 • 25 pts vs. Illinois, most by a Purdue rookie since 2010  
 • Two BIG FOTWs, Feb. 11 USBWA National FOTW  
 • 9 games with 7 pts, 7 rebs, leads Big Ten rookies

• Naismith High School All-America honorable mention

• Won four regional and three district titles  
 • Scored more points as a senior than her first three seasons combined (15.8 ppg)

• Scored in double figures in 22 games this year

• 10th in the Big Ten in free throw percentage  
 • 36th 1,000-point scorer in Purdue history (85 games)  
 • 58 games in double figures at Purdue, 28th in history  
 • Always wears ribbons sent from her mom Libbie  
 • First Australian in program history

• Made a 3-pt in 14 games with 6 multi triple games

• Has a team-high 25.8 points per 40 mins  
 • 5 3-pts vs. MSU, most by Purdue freshman since 20-21  
 • Missed first five games coming back from injury  
 • Tore ACL Feb. 12, 2023, had surgery March 10, 2023  
 • 2022 Illinois Miss Basketball and 4A POTY as a junior

• Scored first Purdue points vs. Southern Indiana

• Playing on the same team as Caitlyn for the first time  
 • Transferred to Purdue after one year at Grand Canyon  
 • No. 6 player in Wisconsin by Prep Girls Hoops  
 • Tabbed the 2022 Wisconsin Sports Network as the state's top post player

• 2nd in the Big Ten in 3-point percentage

• 6th in Purdue history in career 3-pointers with 198  
 • Career 35.6% 3-pt shooter, top-15 in program history  
 • Got engaged during holiday break to Rees Zay  
 • Playing with McKenna for first time since 2021-20  
 • First in IHSA history to lead three Final Fours in scoring

• 1-of-15 from BIG with 10+ PPG, 55 FG%

• Set Purdue best with 22 points vs. SEMO  
 • Hit double figures in 17 games this year  
 • 14 pts, 11 rebs vs. A&M - first double-double at Purdue  
 • Playing with Alaina for the first time ever  
 • 2022 WAC Player of the Year and CoSIDA All-American

### Career Highs:

P 23, at Penn State, 1/18/24  
 R 5, 5 times  
 A 5, at Indiana, 2/11/24  
 M 26, vs. USI, 11/26/23

### Career Highs:

P 23, at Penn State, 1/18/24  
 R 5, 5 times  
 A 5, at Indiana, 2/11/24  
 M 26, vs. USI, 11/26/23

### Career Highs:

P 16, 3 times  
 R 7, 3 times  
 A 4, 2 times  
 M 30, at Penn State, 1/7/23

### Career Highs:

P 28, at Wisconsin, 1/31/21\*  
 R 17, 2 times  
 A 14, vs. Illinois, 2/5/24  
 M 45, vs. Illinois, 2/5/24

### Career Highs:

P 8, vs. USI, 11/26/23  
 R 6, vs. USI, 11/26/23  
 A 4, at Michigan State, 1/24/24  
 M 26, at Michigan State, 1/24/24

### Career Highs:

P 7, at Nebraska, 1/31/24  
 R 5, vs. Valpo, 12/3/23  
 A 2, at Northwestern, 2/9/23\*  
 M 16, vs. Valpo, 12/3/23

### Career Highs:

P 25, vs. Illinois, 2/5/24  
 R 11, at Minnesota, 12/10/23  
 A 2, 6 times  
 M 36, 2 times

### Career Highs:

P 4, at UCLA, 11/6/23  
 R 4, vs. SEMO, 12/6/23  
 A 4, vs. Valpo, 12/3/23  
 M 14, vs. USI, 11/26/23

### Career Highs:

P 39, at San Diego St, 12/21/20\*  
 R 10, Long Beach State, 3/10/21\*  
 A 11, Western Michigan, 11/14/21\*  
 M 44, Indiana, 1/16/22\*

### Career Highs:

P 19, vs. MSU, 2/21/24  
 R 3, 2 times  
 A 2, 2 times  
 M 24, vs. MSU, 2/21/24

### Career Highs:

P 18, Lindenwood, 11/26/22\*  
 R 8, Columbia, 12/11/22\*  
 A 1, 5 times  
 M 35, Southern Utah, 3/10/23\*

### Career Highs:

P 21, vs. Southern, 11/12/23  
 R 8, 4 times  
 A 7, Michigan State, 1/3/21  
 M 44, Indiana, 1/16/22

### Career Highs:

P 30, at Utah Valley, 1/15/22  
 R 14, 3 times  
 A 5, at UTRGV, 2/13/21  
 M 41, at Chicago State, 3/2/22

