



# PURDUE BOILERMAKERS VOLLEYBALL



SID: Rachel Coe | coer@purdue.edu | Office: 765-496-7842 | Cell: 518-729-9960  
900 John R. Wooden Drive, West Lafayette, IN 47907

## 2023 PURDUE VOLLEYBALL SCHEDULE

Record: 0-0 (0-0 Big Ten)

### AUGUST

*Purdue Reamer Club Xtra Special Premier*

25	DUKE (B1G+)	7 p.m.
26	#18 CREIGHTON (BTN)	3:30 p.m.
27	LOYOLA CHICAGO (B1G+)	3 p.m.
<i>Kansas Invitational</i>		
31	at Kansas	7:30 p.m.

### SEPTEMBER

*Kansas Invitational*

1	vs. #12 Marquette	4 p.m.
---	-------------------	--------

*Stacey Clark Classic*

8	SMU (B1G+)	7 p.m.
---	------------	--------

9	#10 Kentucky or #19 Houston (B1G+)	7 p.m.
---	------------------------------------	--------

*Boilermaker Challenge*

14	UCF (BTN)	8 p.m.
----	-----------	--------

15	#22 USC (BTN)	8 p.m.
----	---------------	--------

*Conference Play*

22	at Maryland* (B1G+)	7 p.m.
----	---------------------	--------

24	at Rutgers* (B1G+)	1 p.m.
----	--------------------	--------

29	#5 NEBRASKA* (BTN)	7 p.m.
----	--------------------	--------

### OCTOBER

1	NORTHWESTERN* (B1G+)	1 p.m.
---	----------------------	--------

4	ILLINOIS* (FS1)	6 p.m.
---	-----------------	--------

7	IOWA* (B1G+)	7 p.m.
---	--------------	--------

11	at Indiana* (BTN)	6 p.m.
----	-------------------	--------

15	at #14 Ohio State* (B1G+)	1 p.m.
----	---------------------------	--------

18	INDIANA* (B1G+)	7 p.m.
----	-----------------	--------

22	at #8 Penn State* (FS1)	1 p.m.
----	-------------------------	--------

26	#7 MINNESOTA* (BTN)	TBA
----	---------------------	-----

28	at Illinois* (BTN or B1G+)	7 p.m.
----	----------------------------	--------

### NOVEMBER

1	at #2 Wisconsin* (BTN)	7 p.m.
---	------------------------	--------

5	#8 PENN STATE* (B1G+)	1 p.m.
---	-----------------------	--------

10	at #7 Minnesota* (B1G+)	TBA
----	-------------------------	-----

12	MICHIGAN STATE* (B1G+)	1 p.m.
----	------------------------	--------

17	#2 WISCONSIN* (BTN)	7 p.m.
----	---------------------	--------

18	MARYLAND* (B1G+)	7 p.m.
----	------------------	--------

24	at Michigan* (BTN or B1G+)	6:30 p.m.
----	----------------------------	-----------

25	at Michigan State* (B1G+)	TBA
----	---------------------------	-----

*all times Eastern*

## REAMER CLUB XTRA SPECIAL PREMIER

West Lafayette, Ind. | Holloway Gymnasium

Friday, August 25 - Sunday August 27



### #16 PURDUE BOILERMAKERS

Record: 0-0 (0-0 Big Ten)  
Home: 0-0  
Away: 0-0  
Neutral: 0-0  
HC: Dave Shondell (21st year)  
HC Record: 435-217 (.667)



### DUKE BLUE DEVILS

Record: 0-0 (0-0 ACC)  
Home: 0-0  
Away: 0-0  
Neutral: 0-0  
HC: Jolene Nagel



### #18 CREIGHTON BLUEJAYS

Record: 0-0 (0-0 Big East)  
Home: 0-0  
Away: 0-0  
Neutral: 0-0  
HC: Kristen Bernthal Booth



### LOYOLA CHICAGO RAMBLERS

Record: 0-0 (0-0 A-10)  
Home: 0-0  
Away: 0-0  
Neutral: 0-0  
HC: Amanda Berkley

### SERIES HISTORY VS DUKE

Overall Record: 4-3  
H: 2-1 | A: 1-2 | N: 1-0  
Last Time Out: 8/29/08 | W, 3-1 at West Lafayette, Ind.

### SERIES HISTORY VS CREIGHTON

Overall Record: 1-0  
H: 0-0 | A: 0-0 | N: 1-0  
Last Time Out: 9/8/17 | W, 3-0 at Lawrence, Kan.

### SERIES HISTORY VS LOYOLA CHICAGO

Overall Record: 4-0  
H: 3-0 | A: 0-0 | N: 1-0  
Last Time Out: 8/27/22 | W, 3-0 at Knoxville, Tenn.

### SCHEDULE BREAKDOWN

- Purdue is set to play its toughest non-conference schedule during the Shondell era, headlined by six opponents ranked or receiving votes in the final 2022 AVCA poll. Purdue will host four of those six opponents in Holloway Gymnasium.
- Nine opponents are featured in the top-25 of the AVCA poll, including four confirmed top-10 opponents (potentially five if Purdue plays #10 Kentucky in the Stacey Clark Classic). An additional three opponents received votes in the poll, bringing Purdue's opponent total to 12 opponents ranked or receiving votes in the AVCA preseason poll.
- Three of the team's four weeks of non-conference action will be at home.
- The Boilermakers will see at least one 2022 AVCA final poll ranked opponent each week.
- The first home match of conference action is slated for Friday, September 29 vs. Nebraska. In addition to serving as Purdue's Big Ten home-opener, the match kicks off a four-match homestand, the longest stretch of matches the Boilermakers will host for the remainder of the year.

### PRESEASON ALL-BIG TEN

- Eva Hudson garnered unanimous preseason All-Big Ten honors after leading the league last season in points (570.5) and kills (503).
- She is one of three players in the league to receive the unanimous selection and the only underclassman.
- In the last nine years, there have only been five underclassmen, including Hudson, to earn the unanimous status (Hudson is joined by Ohio State's Emily Londot in 2021, Wisconsin's Dana Rettke in 2018, Minnesota's Stephanie Same-dy in 2018 and Penn State's Haleigh Washington in 2015).
- Purdue's last unanimous preseason selection was Grace Cleveland (2021).

### PRESEASON POLL

- The Boilermakers were picked to finish fifth in the Big Ten preseason poll.
- It is the third time in the last four seasons Purdue's picked to finish fifth in the standings.

48 SEASONS

24 NCAA  
TOURNAMENT  
APPEARANCES

22 AVCA  
ALL-AMERICANS

## AVCA Top-25 Coaches Poll Final: Dec. 19, 2022

Rank	School	Record	Previous Rank
1	Texas [64]	28-1	1
2	Louisville	31-3	4
3	San Diego	31-2	3
4	Pittsburgh	31-4	6
5	Wisconsin	28-4	2
6	Stanford	27-5	5
7	Oregon	26-6	9
8	Ohio State	22-10	10
9	Nebraska	26-6	7
10	Minnesota	22-9	8
11	Penn State	26-8	11
12	Florida	25-6	12
13	Marquette	29-4	16
14	Kentucky	22-8	15
15	Baylor	25-7	17
16	Georgia Tech	21-8	13
17	Houston	30-4	23
18	BYU	23-7	18
19	Rice	27-4	20
20	Purdue	21-11	19
21	Creighton	27-5	14
22	UCF	28-2	21
23	Western Kentucky	29-4	22
24	Washington State	23-10	24
25	Arkansas	21-9	NR

Receiving votes: Southern California 50; Auburn 29; Washington 28; Iowa State 25; Kansas 16; Loyola Marymount 8

## Purdue In The Poll: 2022 Edition

Date	Rank	Date	Rank
Final 2021	6	Week 8 (10/17)	12
Preseason	13	Week 9 (10/24)	12
Week 1 (8/29)	11	Week 10 (10/31)	14
Week 2 (9/5)	9	Week 11 (11/7)	15
Week 3 (9/12)	10	Week 12 (11/14)	19
Week 4 (9/19)	11	Week 13 (11/21)	19
Week 5 (9/26)	5	Week 14 (11/28)	19
Week 6 (10/3)	5	Final (12/19)	20
Week 7 (10/10)	9		

# BIG

## STANDINGS

2022 Final

School	Big Ten Record	Overall Record	Overall Pct.
Wisconsin	19-1	28-4	.875
Nebraska	16-4	26-6	.812
Minnesota	15-5	22-9	.710
Ohio State	15-5	22-10	.688
Penn State	13-7	26-8	.765
Purdue	11-9	21-11	.656
Illinois	10-10	15-15	.500
Indiana	9-11	16-16	.500
Michigan	8-12	17-13	.567
Northwestern	7-13	18-14	.562
Maryland	7-13	16-16	.500
Michigan St.	4-16	13-18	.419
Iowa	4-16	10-21	.323
Rutgers	2-18	8-24	.250

## SCOUTING THE DUKE BLUE DEVILS

- Duke is coming off of a 16-13 (7-11 ACC) record in 2022, including a victory against fellow Big Ten opponent Michigan in four sets (9/9/22).
- In the team's exhibition match on Saturday (8/19), Duke defeated Davidson, 3-0 (25-20, 25-20, 25-14) in true road match fashion. In the match, the Blue Devils hit .330 on the match while limiting Davidson to a .090 clip.
- In the exhibition match, Gracie Johnson led the team with 12 kills and just three errors for a .375 attack %. Meanwhile, Kerry Keefe produced eight kills and Jess Robinson tallied seven and a .700 hitting %.
- Graduate setter Emma Worthington dished out 25 assists at Davidson.
- Johnson, a 2022 first team All-ACC selection, finished last year ranked in the top-50 for eight national categories and in the top-five for eight statistical categories in the ACC. She led the conference in total aces and was second in total kills and total points.

## SCOUTING THE CREIGHTON BLUEJAYS

- Creighton, a consistently excellent team year-over-year, is coming off its ninth straight regular season Big East title and a 27-5 record and finished No. 21 in the final poll last December, directly behind Purdue.
- Creighton will be an experienced team, returning five starters, including Norah Sis, who was named Preseason Big East Player of the Year after earning the honor at the end of the previous year and played alongside Eva Hudson and Chloe Chicoine over the summer with the U.S. U21 National Team at the Pan American Cup.
- The Bluejays were picked to finish second in their league behind No. 12-ranked Marquette, a team Purdue will face next week in Lawrence, Kansas.
- With the team's No. 18 ranking, it is the 12th straight season that Creighton has spent at least one week in the top-25.
- Kendra Wait and Ava Martin also earned 2022 All-Big East and the league's All-Tournament Team honors and earn 2023 preseason nods. Both Sis and Wait were unanimous preseason selections.
- Sis recorded a team-leading 4.33 kills per set while Wait's efforts included 11.16 assists per set, 3.23 digs per set and a team-leading .361 attack %. Martin produced a .253 attack % behind 2.49 kills per set a year ago.

## SCOUTING THE LOYOLA CHICAGO RAMBLERS

- Loyola closed out the 2022 season with a 25-9 overall record, racking up 17 conference wins during its first season as a member of the Atlantic 10 Conference en route to sweeping the league's regular season and tournament titles and earning the NCAA tournament bid.
- 5'9" outside hitter Karlie McNabb joined Eva Hudson on the 2022 AVCA All-America Honorable Mention list. The senior averaged a team-best 3.36 kills per set before being named the Atlantic 10 Conference Player of the Year.
- The Ramblers return all their top players both offensively and defensively in McNabb, Taylor Venuto (2.87 points per set and 1.07 blocks per set) Emily Banitt (2.30 kills per set) and Grace Hinchman (3.88 digs per set).
- Setter Bree Borum returns for her junior year after registering 17 double-doubles last season.

## PURDUE IN THE NATIONAL RANKINGS

- The program has been ranked for 92 consecutive weeks (since preseason 2017), the longest active streak by any Purdue team, including men's basketball.
- Purdue came off its highest final ranking in program history at #6, besting the team's previous record, #7 which was season the season before.
- Last year, the squad was ranked as high as 5th in the nation - its second-highest ranking in program history. The record was set in 2021, ranking 4th following the take-down of #3 Ohio State inside Holloway Gymnasium, 3-2 (9/24/21).

## SEVEN BOILERS IN THE RED, WHITE AND BLUE

- Four current Boilermakers (Eva Hudson, Chloe Chicoine and Raven Colvin, along with assistant coach Michael Bouril) and three alums (Annie Drews, Danielle Cuttino and Ashley Evans) were tapped by USA Volleyball this summer.
- While Bouril served as performance analyst for the U21 men's national team, the current players were invited to the U21 Pan American Cup National Training Team, which Chicoine and Hudson made the final roster. It was Bouril and Hudson's first time representing the U.S.
- Meanwhile, on the women's senior team, Drews, Cuttino and Evans were tapped to represent the U.S. in the Volleyball Nation's League (VNL), making 21% of the team's roster Boilermakers.
- Chicoine and Hudson helped the U.S. to a gold medal, as the team swept Mexico in the championship match in Nogales, Sonora, Mexico.
- For the second straight year, Chicoine was named MVP & First Best Outside Hitter after leading the team with 54 total points over the tournament (39 attacks, 8 blocks and 7 service aces).
- Both Chicoine and Hudson saw time in the title match, with Chicoine leading all players with 19 points (12 attacks, five blocks and two aces) and Hudson registering two service aces.
- Hudson contributed 16 points over the team's four matches (11 attacks, 2 blocks and 3 aces)

## JOINING THE TEAM: THE #3-RANKED RECRUITING CLASS

- Six freshmen join the team for the upcoming 2023 season: Chloe Chicoine, Grace Heaney, Taylor Anderson, Rachel Williams, Kenna Wollard and Julia Kane.
- Purdue landed its first No. 1 recruit in the nation in Chloe Chicoine.
- The class ties 2014 as the highest-ranked recruiting class during the Shondell era.
- The class is made up of one setter (Anderson), two outside hitters (Chicoine and Wollard), one opposite/right side (Heaney) and two defensive specialists (Kane and Williams).
- The incoming class includes four players ranked among the top-63 in the nation, including Indiana Miss Volleyball Chicoine. Heaney checks in at No. 17 overall, followed by Anderson at No. 38 and Wollard at No. 6.

## DAVE SHONDELL & COACHING STAFF

- Entering his 21st season this fall, head coach Dave Shondell is the longest tenured head coaches in the Big Ten.
- Head coach Dave Shondell, associate head coach John Shondell and assistant head coach - recruiting coordinator Kathy Jewell are entering their 21st season at Purdue.
- Effective July 1, 2023, Michael Bouril joined the coaching staff as assistant coach, after previously serving as the team's technical coordinator & performance analyst since June of 2020.
- No Power 5 coaching staff has stayed entirely together for as long as Shondell's. In total, there are only eight active head coaches who've celebrated 20 or more years at their institution.
- Shondell was named both Big Ten Coach of the Year and Regional Coach of the Year in 2021.
- Under his direction, Shondell has guided Purdue to 14 20-win seasons.
- Shondell signed a contract extension in August 2021, running through the 2024 season.

## PURDUE IN THE NCAA TOURNAMENT

- The Boilermakers have earned an NCAA tournament bid for the past eight straight years.
- Dave Shondell has led Purdue to the tournament 17 times in his 20 years of coaching and owns a 30-16 record in the Big Dance (65%).
- Purdue is coming off back-to-back Regional Final berths.
- Purdue NCAA Tournament Record: 35-24 (.593%)
- Number of Second Round Appearances: 22
- Number of Regional Semifinal Appearances: 15
- Regional Semifinals record under Shondell: 4-6 (advanced in 2010, 2013, 2020, 2021)
- Number of Regional Finals Appearances: 5 (1982, 2010, 2013, 2020, 2021)
- Only twice in Purdue history as Purdue not advanced to the second round (1990 and 1984).

## OVER THE LAST 5 YEARS

- Overall record over the last 5 seasons: 111-42 record (72.5%)
- Number of All-America honors: 7
- Number of wins vs. top-5 opponents: 6
- NCAA Tournament match wins: 6
- In four the of the last five seasons, at least one Boilermaker finished among the top-11 in the nation in at least one statistical category.
- Moreover, for the last three straight years, two different Boilermakers were among the top-15 in the nation in a statistical category.

## THE BIG TEN COMPARISON: 2022 LOOK-BACK

- Libero Maddie Schermerhorn led the conference for the majority of Big Ten play before finishing second with 4.62 digs per set.
- Hudson led the league in total points (570.5) and second in total kills (503).
- Middle Raven Colvin was sixth in the league in blocks per set (1.45) and fifth in aces per set (.36).
- Both setters: Megan Renner and Grace Balensiefer ranked in the top-10, the only league school to have two setters appear. Renner holds ninth at 7.19, while Balensiefer ranks 10th with 6.84.

## STATS TO WATCH

- Purdue is seven matches away from its 1,000th program win. The milestone could come as soon as Friday, September 9 in the final match of the Stacey Clark Classic (vs. Kentucky or Houston at 7 p.m. ET).
- Maddie Schermerhorn is 109 digs away from reaching her 1,000th, entering the season with 891 career digs.
- Raven Colvin will look to reach her 300th total block, entering the year with 291. Colvin is also looking to reach her 500th career kill this season, entering with 438.

## PURDUE PERFORMANCE VS. THE NATIONAL STAGE IN 2022

- Purdue led all Power 5 programs three separate weeks in 2022: Week 5: 16.00 kills per set in Week One of conference action, Week 10: 34 total blocks, Week 13 in overall defense (33 total blocks and 152 total digs).
- Raven Colvin's errorless .696 attack % at Michigan State last season was not only the most efficient performance (20+) attempts in the Big Ten, ranked fourth among all Power Five matches.

## MAKING HISTORY: RAVEN COLVIN IS THE BIG TEN RALLY-SCORING ERA BLOCKS RECORD HOLDER

- Sophomore middle blocker Raven Colvin accomplished what no other Big Ten player has done since the rally-scoring era took effect, racking-up 16 total blocks (5-11) in the four-set win at Maryland (11/23/22).
- Her 16 blocks also set the Purdue four-set match record while also tying the overall Purdue record, both of which was held by Donna Gill in 1991.
- The last Big Ten player to crack the Big Ten record book for a single performance in the category was fellow Boilermaker, Stephanie Lynch when she notched 15 (4-11) vs. Utah in 2007.
- While Colvin's mark sets the rally-scoring era record for the Big Ten, it ties as the second-most all-time. She is one of seven Big Ten players to ever reach the mark. In fact, of those seven players, three are Boilermakers (Colvin, Amy Warner, Donna Gill) and four are Wisconsin Badgers.

## THE ROSTER AT A GLANCE

- Eleven of the 17 members of the team are underclassmen (64%).
- Purdue picked up one transfer in graduate setter Lorin Poulter.
- Class breakdown: eight freshmen, three sophomores, three juniors, one senior, two graduate students.
- Eight members are the team are from the state of Indiana.
- States represented on the roster: Colorado, Florida, Indiana, Illinois, Massachusetts, Nebraska, Ohio, Pennsylvania, Texas.
- Tallest member of the team: 6'6" middle blocker Lizzie Carr.
- Shortest member of the Team: 5'7" defensive specialists Emily Brown and Rachel Williams.
- The Boilermakers lose seven players: defensive specialist Ava Torrance, setter Grace Balensiefer, outside hitter Maddy Chinn, outside hitter Emma Ellis, outside hitter Madeline Koch, middle blocker Hannah Clayton and setter Megan Renner.

## A NEW SETTER TO EMERGE

- Fans will see a new Boilermaker taking the reins as setter this season, with three setters on Purdue's roster: graduate transfer Lorin Poulter, redshirt sophomore Sydney Yim and true freshman Taylor Anderson.
- While Yim appeared in four matches last season and took over as the team's distributor following Renner's injury during the spring season, the setters are relatively untested while wearing the Old Gold and Black.
- Poulter, a 5'11" transfer from Denver, had a breakout year as a senior, starting every match on her way to earning First Team All-Summit League honors. The starter dished out a career-best 1,040 assists (10.20 per set) and 214 digs and six double-doubles last fall. She was just the third Pioneer in the program's Division I era with at least 2,000 assists and 100 aces in her career.
- Poulter's sister, Jordyn, is an Illinois alum and a setter on the U.S. National Team, where she guided the U.S. to a gold medal at the 2020 Tokyo Olympics alongside teammate and Boilermaker Annie Drews.

## D1 National Rankings - Final 2022

### Total Blocks

No. 10 Raven Colvin (173)

### Total Attacks

No. 8 Eva Hudson (1,420)

### Blocks Per Set

No. 15 Raven Colvin (1.42)

### Total Points

No. 14 Eva Hudson (583)

### Total Kills

No. 16 Eva Hudson (515)

### Attacks Per Set

No. 22 Eva Hudson (11.64)

### Kills Per Set

No. 28 Eva Hudson (4.22)

### Points Per Set

No. 33 Eva Hudson (4.78)

### Digs Per Set

No. 50 Maddie Schermerhorn (4.62)

## Team National Rankings - Final 2022

No. 11 | Total Blocks (317)

No. 17 | Accumulated Attendance (35,611)

No. 26 | Blocks Per Set (2.60)

No. 27 | RPI

No. 19 | Toughest Schedule

No. 61 | Team Kills (1,569)

## Wins vs. Top-5 Opponents

### By Opponent Ranking

(Since 2011)

Opponent	Score	Date
vs. #2 Nebraska	3-0	11/12/2011
vs. #3 Wisconsin	3-1	10/31/2021
vs. #3 Ohio State	3-2	9/24/2021
vs. #3 Minnesota	3-2	11/21/2015
at #4 Wisconsin	3-1	11/12/2021
at #4 Penn State	3-2	10/27/2018
vs. #4 Kansas	3-1	9/16/2016
vs. #5 BYU*	3-2	12/9/2021
vs. #5 Nebraska	3-2	10/26/2019
vs. #5 Minnesota	3-1	11/10/2017
vs. #5 Illinois	3-1	11/2/2011

\* NCAA Regional Semifinals

## Best Starts in Program History

### By Most Recent (one loss or less)

1. 2022 (14-1)
2. 2011 (14-0)
3. 2006 (13-1)
4. 1985 (13-1)
5. 1983 (13-1)
6. 1982 (33-1)
7. 1981 (15-1)
8. 1978 (20-1)

### By Most Wins (one loss or less)

1. 1982 (33-1)
2. 1978 (20-1)
3. 1981 (15-1)
4. 2011 (14-0)
5. 2022 (14-1)
6. 1985 (13-1)
- 2006 (13-1)
- 1983 (13-1)

## The Last Time....

### A Match Went to 5 Sets

Dec. 2, 2022 vs. Tennessee (NCAA 1st Round)  
W, 14-25, 25-14, 22-25, 25-22, 15-11

### Last Victory over a Top-5 Team

Dec. 9, 2021 vs. #5 BYU  
W, 3-2 (25-12, 16-25, 21-25, 25-13, 18-16)

### Team Hitting % of .400 or Better

.422 | September 10, 2022 vs. Xavier | W, 3-0

### 60 or More Team Kills

61 | Dec. 2, 2022 vs. Tennessee (NCAA 1st Round) | W, 3-2

### 17 or More Total Team Blocks

17 | Nov. 25 at Maryland | L, 2-3

### 80 or More Team Digs

82 | Dec. 3, 2021 vs. Dayton | W, 3-2

### 10 or More Team Aces

11 | Sept. 2, 2022 vs. #RV Utah | W, 3-2

## Top-25 Wins in Holloway

### By Most Recent (Since 2011)

Opponent	Score	Date
vs. #8 Minnesota	3-0	9/23/2022
vs. #3 Wisconsin	3-1	10/31/2021
vs. #15 Penn State	3-2	10/17/2021
vs. #3 Ohio State	3-2	9/24/2021
vs. #22 Tennessee	3-0	9/18/2021
vs. #16 Marquette*	3-1	12/7/2019
vs. #23 Michigan	3-0	11/23/2019
vs. #5 Nebraska	3-2	10/26/2019
vs. #10 Michigan State	3-1	11/24/2017
vs. #10 Wisconsin	3-0	11/11/2017
vs. #5 Minnesota	3-1	11/10/2017
vs. #13 Michigan	3-1	10/28/2016
vs. #4 Kansas	3-1	9/16/2016
vs. #3 Minnesota	3-2	11/21/2015
vs. #8 Illinois	3-2	10/25/2015
vs. #22 Ohio State	3-2	10/18/2014
vs. #19 Michigan State	3-2	11/30/2013
vs. #6 Nebraska	3-0	11/22/2013
vs. #15 Wisconsin	3-2	11/2/2013
vs. #12 Ohio State	3-0	10/4/2013
vs. #21 Illinois	3-2	9/29/2012
vs. #21 Northern Iowa	3-0	8/24/2012

\* NCAA Tournament match

## PURDUE & INDIANA GATORADE PLAYER OF THE YEAR HISTORY

- Three Gatorade state Player of the Years are on the roster for 2023: Ali Hornung, Syndey Yim and Chloe Chicoine.
- For the third consecutive year, Indiana's Gatorade Player of the Year has been a Boilermaker:  
2022: Chloe Chicoine  
2021: Chloe Chicoine  
2020: Ali Hornung
- In addition, setter Yim was the 2020-21 Gatorade Player of the Year for the state of Massachusetts. Meanwhile, Kenna Wollard was named by the Illinois as the Journal Star Illinois Player of the Year.
- Chicoine marks Shondell's fifth Gatorade Player of the Year for the state of Indiana.

## 2022 BIG TEN FRESHMAN OF THE YEAR AND FIRST TEAM ALL-BIG TEN: EVA HUDSON

- Named Purdue Female Athlete of the Year alongside men's basketball's Zach Edey for the 2022-23 year.
- Hudson is the first Purdue freshman to earn an AVCA All-America nod and the first AVCA Midwest Region Freshman of the Year in program history.
- First Purdue freshman to be recognized on the All-Region team in any capacity since 1986.
- Second Big Ten Freshman of the Year in Purdue history (last: Debbie McDonald, 1986).
- First unanimous Big Ten All-Freshman Team selection.
- Led the Big Ten in total points (583) and total kills (515).
- Hudson has won more Big Ten Player of the Week awards (three) as a freshman than any newcomer in league history. She started the season 5-for-7 on Big Ten Freshman of the Week honors in addition to being named Player of the Week three times. Moreover, she ties for No. 2 in Big Ten history for most Big Ten Freshman of the Week honors (ties Minnesota's Samantha Seliger-Swenson six in 2015; record is nine by Wisconsin's Dana Rettke in 2017).
- Ranks T-No. 5 in program history with 1,420 attacks this season. Not only is it the most-ever by a Purdue freshman, Hudson is one of only four Boilermakers to post as many attempts in a single-season (joins Ariel Turner: 2012, 2011, 2010, Colleen DeMeyer: 1979 and Caitlyn Newton: 2021).
- Closed the season three kills shy of tying the 10th-most kills by a Boilermaker in a single season - a feat only four Boilermakers this century have managed - all of whom were All-Americans (Ariel Turner in 2011 and 2012, Sherridan Atkinson in 2018, Danielle Cuttino in 2016 and Annie Drews in 2015).
- As the Big Ten leader in points/set and kills/set for the first 10 straight weeks, Hudson has set the standard for Big Ten freshmen.
- Finished the year ranked No. 8 in total attacks (1,420), No. 14 in total points (583), No. 16 in total kills (515).
- The Fort Wayne, Indiana native has reached double-digit kills in all but two matches this season.
- In conference play, Hudson averaged 3.94 kills per set, 4.48 points per set and 2.11 digs per set.
- Hudson closed out the regular-season with a pair of double-doubles.
- Set a career-high 24 kills and 17 digs at Illinois (9/30).
- Number of 20+ kill matches: 6
- Number of 15+ kill matches: 21
- Number of matches hitting .300% or above: 11
- Number of matches hitting .350% or above: 8
- Number of matches hitting .400% or above: 6
- Matches hitting .500% or above: 1
- When reaching 20 kills in a match, Hudson has done so at some of her most efficient rates, including 23 kills with three errors on 50 swings (.400) in the NCAA First Round vs. Tennessee (12/2) and 21 kills with a .475% vs. Xavier (9/10), proof that when she gets going, she is even more difficult to stop. In the past seven years, only All-Americans Sherridan Atkinson, Grace Cleveland, Danielle Cuttino and Faye Adelaja have registered as efficient of a match while posting 20+ kills. Of those four Boilermakers, only Hudson has accomplished the feat as an underclassman.
- Hudson is the first Boilermaker in program history to win both Big Ten Player and Freshman of the Week awards.
- She is the 11th player in Big Ten history to receive both Player and Freshman of the Week honors in the same week. Ten of those players went on to be named All-Americans during their career and/or Big Ten Freshman of the Year.
- Posted 36 attempts in the season-opener, the most touches by a freshman since before 2014. A feat she has continued to best and current stands at a season-high of 68 which came at Maryland (11/23).
- Hudson's 4.52 kills per set and 5.51 points per set are the most by a Boilermaker in non-con play for more than seven years. Annie Drews, who went on to win Olympic Gold in the Tokyo 2020 Olympics, was the next closest with 4.91 points per set during her 2015 senior campaign.

## SECOND TEAM ALL-BIG TEN: MADDIE SCHERMERHORN

- One of the best defensive specialists in the nation, Schermerhorn is joined by the 2022 Big Ten Defensive Player of the Year Kylie Murr as the only players to average at least 4.62 digs per set in all of Power Five.
- Earned Second Team All-Big Ten honors in 2022.
- Played in 110 sets over the course of 29 matches.
- Averaged 4.62 digs per set, No. 3 in Purdue single-season history.
- Produced 508 digs, ranking No. 8 in Purdue single-season history.
- One of only four Boilermakers this century to surpass 500 digs in a single season (joins Anne Mastandrea in 2005, Kellii Miller in 2007 and 2008, Carly Cramer in 2010 and 2012).
- Registered the third-most digs per set in a single season in Purdue history, the highest average by a Boilermaker since 2007.
- Became the sixth Boilermaker ever to be named Big Ten Defensive Player of the Week multiple times in a single season.
- Set a career-high 28 digs vs. #RV Michigan (11/6), becoming just the third Big Ten player to record as many in a match this season.
- Averaged 4.66 digs per set during Big Ten play.
- Schermerhorn missed three matches due to injury: at Iowa (9/25), at Illinois and vs. Rutgers (10/2).
- Number of 15+ dig matches: 19
- Number of 20+ dig matches: 9
- Number of 25+ dig matches: 3
- The senior played in her 100th career match at Indiana (10/14).



## SECOND TEAM ALL-BIG TEN: RAVEN COLVIN

- As a sophomore, Colvin was named Second Team All-Big Ten and All-Northeast Honorable Mention after setting two program records in 2022: hitting % in a 4-set match (20+ attempts) with her errorless .696 effort Michigan State (11/4) (16-0-23) and the Purdue and Big Ten rally-scoring era record of 16 blocks in a match. Moreover, the mark tied as the most by a Boilermaker in program history in 31 years, set by Donna Gill in 1991.
- Only one other Big Ten player has reached even 15 blocks in the 21st century, a fellow Boilermaker: Stephanie Lynch in 2007 (15).
- Meanwhile, Colvin posted 151 block assists in 2022, second-most in Purdue history.
- Colvin led the team in efficiency with a .285 clip on the season as well as 1.42 blocks per set (173 total blocks).
- Among the top blockers in the nation, Colvin ranked 10th in the nation in blocks.
- The sophomore dishes out the toughest serve on the team, totaling 43 aces this season and was the first middle to lead Purdue behind the line in 11 years (last: Tiffany Fisher in 2011).
- Colvin sits with the third-most blocks in a single season and is on track to set take second on Friday.
- The middle joins elite company of All-American Stephanie Lynch, All-American Kiki Jones and Kim McConaha as the only Boilermakers this century to reach 131 block assists in a single season.
- Over the last eight matches, Colvin is averaging a 2.38 kills per set and 1.72 blocks per set.
- She is joined by younger brother, Myles Colvin (men's basketball incoming freshman) and father Rosevelt Colvin (football, two-time Super Bowl Champion with the Patriots and 1997 and 1998 All-Big Ten honoree) as Boilermakers.

## HOLLOWAY GYMNASIUM HISTORY

- Holloway was rated the best atmosphere in the toughest volleyball conference in the nation: the Big Ten.
- Purdue's win vs. then-#8 Minnesota last season marked the seventh top-25 opponent to fall inside Holloway in the last three years.
- Over the last 11 years, Purdue has taken down 12 top-25 opponents on Belin Court, including two #3 teams in 2021.
- In the last 11 years, Purdue has recorded 11 wins vs. top-5 opponents alone, eight of those wins came on Purdue's home turf.
- Fans have sold out every Big Ten match for three consecutive seasons (2021-present). The 2019 season was one match shy of extending the streak to four years.
- The student section is called the Block Party.

## MEGAN RENNER: TRANSITION TO STUDENT ASSISTANT

- Set to have her breakout season this fall, setter Megan Renner was forced to medically retire before her redshirt senior season due to her second ACL tear suffered during the spring season.
- Renner remains on the team as Student Assistant and will actively work with both the players and coaching staff throughout the season, attending the team's practices and matches.

## LOOK BACK AT 2022

- The Boilermakers are coming off an NCAA tournament Second Round appearance, where they lost to eventual NCAA runner-up Louisville. The year marked the second time in three seasons Purdue has fallen to a team that made the championship match.
- After graduating all but one member of their previous starting lineup, Purdue finished 6th in the Big Ten standings after being picked to finish 8th. While no Boilermakers were recognized on the preseason All-Big Ten awards, three were selected at the end of the season: Big Ten Freshman of the Year, First Team All-Big Ten and unanimous All-Freshman Team Eva Hudson, Second Team All-Big Ten Raven Colvin and Second Team All-Big Ten Maddie Schermerhorn.
- Purdue finished in the top-6 of the Big Ten standings for the 12th time in the last 13 years.
- For the seventh straight year, the Boilermakers entered Big Ten play with one non-conference loss or fewer (9-1 record). They went on to start Big Ten play 5-0, the best start in 37 years (last: 1985, started 5-0).
- Moreover, the team's nine non-con wins were the most since 2018.
- Purdue played a total of nine matches vs. top-25 opponents. Of those nine, seven were vs. top-10 programs. Eight of Purdue's 11 losses came at the hands top top-15 opponents.
- Holloway Gymnasium sold out every match except for one 10 a.m. non-con tournament match - a match that was nearly a sellout, coming just 315 tickets short of a perfect sold out season.
- Meanwhile, the student section, the Block Party, sold out its season tickets in under two hours of going on sale.
- Team statistical leaders were Eva Hudson (515 kills, 583 points), Raven Colvin (409.5 points, 269 kills, 43 aces, 1.42 blocks per set) and Maddie Schermerhorn (508 digs, 4.62 per set). Setters were Megan Renner (712 assists) and Grace Balensiefer (511 assists).

## All-Big Ten Team History Under HC Dave Shondell

Year	Name
2022	Eva Hudson (1st Team) Raven Colvin (2nd Team) Maddie Schermerhorn (2nd Team)
2021	Hayley Bush (1st Team) Grace Cleveldald (1st Team) Caitlyn Newton (1st Team) Jena Otec (2nd Team)
2020	Hayley Bush (1st Team) Grace Cleveldald (1st Team) Caitlyn Newton (1st Team) Jena Otec (1st Team)
2019	Grace Cleveland (1st Team) Blake Mohler (1st Team) Caitlyn Newton (2nd Team)
2018	Sherridan Atkinson (1st Team) Blake Mohler (1st Team)
2017	Sherridan Atkinson (1st Team) Danielle Cuttino (1st Team)
2016	Danielle Cuttino (1st Team) Faye Adelaja (HM)
2015	Annie Drews (1st Team) Faye Adelaja (HM)
2014	Val Nichol (1st Team) Annie Drews (1st Team)
2013	Val Nichol (1st Team) Carly Cramer (HM)
2012	Ariel Turner (1st Team) Carly Cramer (HM)
2011	Tiffany Fisher (1st Team) Ariel Turner (1st Team)
2010	Jaclyn Hart (1st Team)
2009	Tiffany Fisher (HM)
2008	Stephanie Lynch (HM)
2007	Stephanie Lynch (1st Team)
2006	Stephanie Lynch (1st Team)
2005	Renata Dargan (1st Team) Stephanie Lynch (HM)
2004	Kim McConaha (1st Team) Renata Dargan (HM)
2003	Renata Dargan (HM) Kim McConaha (HM)

## Top Performances: 2023 Season

Category	Purdue	Opponent
Points		
Kills		
Attacks		
Service Aces		
Total Blocks		
Block Solos		
Block Assists		
Digs		
Assists		
Attack %		



## 2023 PURDUE VOLLEYBALL ROSTER

No.	Name	Ht.	Pos.	Yr.	Hometown / High School / Last School
1	Rachel Williams	5-7	DS	Fr.	West Lafayette, Ind. / West Lafayette
2	Chloe Chicoine	5-10	OH	Fr.	Lafayette, Ind. / McCutcheon
4	Kenna Wollard	6-1	OH	Fr.	Dunlap, Ill. / Illinois Valley Central
5	Taylor Anderson	6-1	S	Fr.	San Antonio, Texas / Cornerstone Christian
6	Lorin Poulter	5-11	S	Gr.	Aurora, Colo. / Eaglecres / Denver
7	Raven Colvin	6-1	MB	Jr.	Indianapolis, Ind. / Heritage Christian
8	Maddie Schermerhorn	5-10	DS	Gr.	Ligonier, Ind. / West Noble
9	Lourdès Myers	6-3	MB	RS-Jr.	Alliance, Ohio / St. Thomas Aquinas
10	Ali Hornung	5-10	DS/OH	Jr.	New Albany, Ind. / Providence
11	Emily Brown	5-7	DS	Sr.	Lafayette, Ind. / McCutcheon / Missouri
14	Grace Heaney	6-2	OPP/RS	Fr.	Omaha, Neb. / Elkhorn North
15	Lizzie Carr	6-6	MB	RS-Fr.	West Chester, Pa. / West Chester East
17	Eva Hudson	6-1	OH	So.	Fort Wayne, Ind. / Bishop Dwenger
18	Brielle Warren	6-1	OH	RS-Fr.	College Station, Texas / Fulshear
19	Sydney Yim	6-1	S	RS-So.	Newburyport, Mass. / Newburyport
21	Julia Kane	5-11	DS	Fr.	Windermere, Fla. / Windermere Prep
22	Emily Rastovski	6-2	OH	RS-So.	Valparaiso, Ind. / Morgan Township

**Head Coach:** Dave Shondell, 21st season

**Associate Head Coach:** John Shondell, 21st season

**Assistant Head Coach - Recruiting Coordinator:** Kathy Jewell, 21st season

**Assistant Coach:** Michael Bouril, 4th season

**Supervisor of Volleyball Operations:** Carrie Gurnell, 3rd season

**Graduate Assistant:** Ben Cutrone, 2nd season

**Student Assistant:** Megan Renner

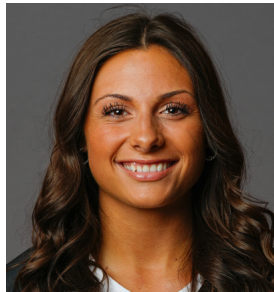




# 2023 PURDUE VOLLEYBALL ROSTER



**#1 Rachel Williams**  
Fr. | DS | 5-7 | West Lafayette, Ind.



**#2 Chloe Chicoine**  
Fr. | OH | 5-10 | Lafayette, Ind.



**#4 Kenna Wollard**  
Fr. | OH | 6-1 | Dunlap, Ill.



**#5 Taylor Anderson**  
Fr. | S | 6-1 | San Antonio, Texas



**#6 Lorrin Poulter**  
Gr. | S | 5-11 | Aurora, Colo.  
Previous School: Denver



**#7 Raven Colvin**  
Jr. | MB | 6-1 | Indianapolis, Ind.



**#8 Maddie Schermerhorn**  
Gr. | DS | 5-10 | Ligonier, Ind.



**#9 Lourdes Myers**  
RS-Jr. | MB | 6-3 | Alliance, Ohio



**#10 Ali Hornung**  
Jr. | DS/OH | 5-10 | New Albany, Ind.



**#11 Emily Brown**  
Sr. | DS | 5-7 | Lafayette, Ind.  
Previous School: Missouri



**#14 Grace Heaney**  
Fr. | OPP/RS | 6-2 | Omaha, Neb.



**#15 Lizzie Carr**  
RS-Fr. | MB | 6-6 | West Chester, Pa.



**#17 Eva Hudson**  
So. | OH | 6-1 | Fort Wayne, Ind.



**#18 Brielle Warren**  
RS-Fr. | OH | 6-1 | College Station, Texas



**#19 Sydney Yim**  
RS-So. | S | 6-1 | Newburyport, Mass.



**#21 Julia Kane**  
Fr. | DS | 5-11 | Windermere, Fla.



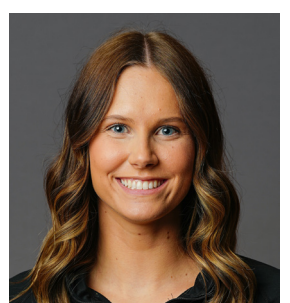
**#22 Emily Rastovski**  
RS-So. | OH | 6-2 | Valparaiso, Ind.



**Director of Operations  
Carrie Gurnell**  
3rd Season



**Graduate Assistant  
Ben Cutrone**  
2nd Season



**Student Assistant  
Megan Renner**  
Gr. | S | Cedar Rapids, Iowa



**Head Coach  
Dave Shondell**  
21st Season



**Associate Head Coach  
John Shondell**  
21st Season



**Assistant Head Coach -  
Recruiting Coordinator  
Kathy Jewell** | 21st Season



**Assistant Coach  
Michael Bouril**  
4th Season

# TEAM MATCH RECORDS

## TEAM RECORDS

Kills	106	vs. Duke, 10/15/86
Total Attempts	275	at Wisconsin, 10/12/90
Hitting Percentage .560 (30-2-50)		vs. Notre Dame, 9/8/83
Assists	100	vs. Michigan, 11/22/96
Service Aces	22	at Minnesota, 10/2/82
Solo Blocks	18	vs. Northwestern, 10/15/83
Block Assists	42	vs. Indiana, 10/21/92
Total Blocks	27.5 (10-35)	at Illinois State, 10/20/82
Digs	144	at Western Michigan,

## OPPONENT TEAM RECORDS

Kills	113	Illinois, 10/22/86
Total Attempts	276	at Wisconsin, 10/12/90
Hitting Percentage .527 (48-9-74)		at Illinois, 10/2/93
Assists	109	at Indiana, 11/7/98
Service Aces	20	Pittsburgh, 10/7/83
Solo Blocks	11	at Ohio State, 10/6/84
Block Assists	38	Wisconsin, 10/27/07
Total Blocks	21 (5-32) 21 (2-38)	Kansas State, 9/12/87 Wisconsin, 10/27/07
Digs	146	at Western Michigan, 11/19/85

Note: Team records date to 1977, except service aces (1979), solo blocks and block assists (1981) and assists and digs (1983).

## TEAM MATCH RECORDS

Kills			Assists			Solo Blocks		
106	Duke	10/15/86	100	Michigan	11/22/96	18	Northwestern	10/15/83
105	Michigan	11/22/96	93	at Indiana	11/7/98	16	Minnesota	9/16/81
103	Illinois	10/11/96	91	vs. Houston	9/14/96	15	vs. Oregon	9/7/84
101	at #19 Texas A&M	10/12/85	90	Illinois	10/11/96		#19 Northwestern	11/21/82
99	at Indiana	11/7/98	89	at #19 Texas A&M	10/12/85		Hawaii	11/11/81
98	vs. Penn State	9/14/84		Indiana	10/20/90	14	#15 Nebraska	12/11/82
	at #17 Western Michigan	11/13/84	88	at Northwestern	11/19/83	13	Indiana	9/11/82
97	Indiana	10/20/90	87	Minnesota	11/15/96	12	Pittsburgh	10/7/83
	vs. Houston	9/14/96		at Michigan	11/5/99		Illinois State	10/2/83
96	Michigan State	11/18/89		Indiana	11/24/00		vs. #8 Arizona	9/9/83
Total Attempts			Service Aces			Block Assists		
275	at #16 Wisconsin	10/12/90	18	Bowling Green	9/2/87	42	Indiana	10/21/92
269	Duke	10/15/86		Illinois State	10/20/87	38*	Utah	9/1/07
266	vs. Houston	9/14/96	17	vs. Penn State	9/14/84	36	#14 Penn State	10/5/91
265	at #14 Western Michigan	11/19/85		Loyola	10/15/85		Michigan	11/22/91
261	at #15 Western Michigan	11/10/87		at Minnesota	10/16/87	35	at Illinois State	10/20/82
249	Illinois	10/4/00		Indiana State	11/6/01	34	LSU	9/19/87
248	vs. Northern Illinois	9/11/92	16	Northwestern	10/15/83		at Rutgers	3/19/21
246	#18 Michigan	10/2/99		Michigan	11/28/86		at #7 Ohio State	10/15/21
244	Bowling Green	9/2/87	15	Six times,		33	#23 Illinois	10/30/99
243	at #19 Texas A&M	10/12/85		last at Texas-Arlington	9/4/93		at Michigan State	11/6/99
	Michigan State	11/18/89				32	Ohio State	10/3/86
Hitting Percentage			Digs				#8 Illinois	11/25/87
.560	Notre Dame	9/8/83	144	at #15 Western Michigan	11/10/87		Georgia	9/23/90
.548	Texas A&M Corpus Christi	9/20/19	130	at #16 Wisconsin	10/12/90	Total Blocks		
.534	Michigan	9/24/83	124	at #19 Texas A&M	10/12/85	27.5	at Illinois State	10/20/82
.529	George Washington	8/25/12	119	at #15 Ohio State	11/17/90	25	Northwestern	10/15/83
.522	Kentucky	10/16/82	118	at Wisconsin	11/3/89	24*	Utah	9/1/07
.517	Indiana	9/24/16	117	Michigan State	11/18/89	23.5	Hawaii	11/11/81
.500	Eastern Kentucky	9/1/00	115	vs. Kansas State	9/12/87	23	Michigan	11/22/91
.495*	East Tennessee State	9/18/04		Iowa	9/24/88	22	#15 Nebraska	12/11/82
.490	Syracuse	9/6/97	113	Northwestern	9/28/91		at #18 Northwestern	9/27/83
.482	Michigan	9/22/84	110	at #14 Western Michigan	11/19/85		Pittsburgh	10/7/83
				vs. Northern Illinois	9/11/92		Indiana	10/21/92
						21.5	#15 Western Michigan	12/9/83



# INDIVIDUAL MATCH RECORDS

## PURDUE INDIVIDUAL RECORDS

Kills	38	Bev Krupa at Indiana, 11/7/98
Total Attempts	88	Joanna Lowry vs. Indiana, 11/24/00
Hitting Percentage	1.000 (13-0-13)	Debbie McDonald at North Carolina State, 9/25/87
	1.000 (10-0-10)	Kristen Arthurs vs. Ball State, 8/28/09
Assists	87	Linda Menconi vs. Houston, 9/14/96
Service Aces	9	Marianne Smith vs. Butler, 9/13/85
Solo Blocks	8	Kate Crandell vs. Pittsburgh, 10/7/83
Block Assists	16	Donna Gill vs. Indiana, 10/21/92 Amy Warner vs. Indiana, 10/21/92
Total Blocks	16	Donna Gill (3-13) vs. Michigan, 11/22/91 Donna Gill (0-16) vs. Indiana, 10/21/92 Amy Warner (0-16) vs. Indiana, 10/21/92

## OPPONENT INDIVIDUAL RECORDS

Kills	41	Stacey Gordon, vs. Ohio State, 11/7/03
Total Attempts	89	Sarah Powers, at West. Michigan, 11/19/85
Hitting Percentage	.909 (10-0-11)	Ariana Filho, Minnesota, 10/2/09
Assists	99	Disa Johnson, Illinois, 10/22/86
Service Aces	11	Connie Wolter, Florida, 9/3/88
Solo Blocks	6	Sherri Rinker, at Ohio State, 11/1/86 Tiffany Meligan, Iowa, 11/19/93 Ashley Wittman, Minnesota, 10/1/10
Block Assists	13	Taylor Reineke, Wisconsin, 10/27/07 Johannah Bangert, at Illinois, 10/9/09
Total Blocks	14 (1-13)	Taylor Reineke, Wisconsin, 10/27/07
Digs	38	Jessica Granquist, Minnesota,

## INDIVIDUAL MATCH RECORDS

### Kills

- 38 Bev Krupa at Indiana, 11/7/98
- 34 Aneska Arosarena, Minnesota, 10/23/98
- Aneska Arosarena vs. Michigan, 10/2/99
- 33 Bev Krupa vs. Michigan, 11/14/98
- Annie Drews at Western Kentucky, 9/12/14
- 32 Marianne Smith at Texas A&M, 10/12/85
- Darcy Jones vs. Northern Illinois, 9/11/92
- Brooke White vs. Weber State, 8/31/96
- Brooke White vs. Illinois, 10/11/96
- Joanna Lowry vs. Indiana, 11/24/00
- Sherridan Atkinson at #4 Penn State, 10/27/2018)

### Total Attempts

- 88 Joanna Lowry vs. Indiana, 11/24/00
- 87 Aneska Arosarena vs. Michigan, 10/2/99
- 85 Ariel Turner at Northwestern, 9/25/10
- 84 Caitlyn Newton vs. Minnesota, 2/5/2021
- 81 Ariel Turner vs. Illinois, 11/2/11

### Hitting Percentage

- 1.000\* Debbie McDonald (13-0-13) at North Carolina State, 9/25/87
- Kristen Arthurs (10-0-10) vs. Ball State, 8/28/09
- .900 Raven Colvin (9-0-10) vs. Purdue Fort Wayne (9/17/2021)
- .875 Tiffany Fisher (14-0-16) vs. Air Force, 9/2/11
- .818 Kierra Jones (9-0-11) vs. College of Charleston, 8/27/11
- .813 Debbie McDonald (13-0-16) at Michigan State, 11/21/87

### Assists

- 87 Linda Menconi vs. Houston, 9/14/96
- 79 Taryn Catlin at Indiana, 11/7/98
- 76 Taryn Catlin at Michigan, 11/5/99
- Darcy Orin vs. Duke, 10/15/86
- 75 Taryn Catlin vs. Minnesota, 11/15/96

### Service Aces

- 9 Marianne Smith vs. Butler, 9/13/85
- 8 Becky Kanitz vs. Illinois State, 10/20/87
- Debbie McDonald at Minnesota, 11/24/89
- 7 Marianne Smith at Indiana, 10/5/84
- Debbie McDonald at Wisconsin, 11/6/87
- Carey Burvis at N.C. State, 9/11/93
- Brooke White vs. Murray State, 9/18/93
- Carey Burvis at Michigan State, 11/13/93
- Katie Gibbons at Michigan State, 11/8/97
- Ariel Turner at Cincinnati, 9/8/12
- Caitlyn Newton at Michigan, 11/27/19

### Digs

- 40 Kelli Miller at Indiana, 10/17/07
- 39 Blair Bashen at Baylor, 9/5/09
- 37 Becky Kanitz at Northwestern, 11/7/87
- Becky Kanitz at Western Michigan, 11/10/87
- 36 Kelli Miller at Michigan, 10/20/07

### Solo Blocks

- 8 Kate Crandell vs. Pittsburgh, 10/7/83
- 7 Kate Crandell vs. Wisconsin, 10/31/82
- Kate Crandell vs. Nebraska, 12/11/82
- Marianne Smith at Illinois State, 9/10/83
- Marianne Smith vs. SW Missouri State, 9/7/84

### Block Assists

- 16\* Donna Gill vs. Indiana, 10/21/92
- 16\* Amy Warner vs. Indiana, 10/21/92
- 13 Jan Hoosline at Illinois State, 10/20/82
- Donna Gill vs. Michigan, 11/22/91
- 12 Jane Neff at Illinois State, 10/20/82
- Stephanie Lynch at Wisconsin, 11/29/08
- Kristen Arthurs vs. Michigan, 10/23/10
- Taylor Trammell at Rutgers, 3/19/21

### Total Blocks

- 16 (3-13) Donna Gill vs. Michigan, 11/22/91
- 16 (0-16) Donna Gill vs. Indiana, 10/21/92
- 16 (0-16) Amy Warner vs. Indiana, 10/21/92
- 15 (2-13) Jan Hoosline at Illinois State, 10/20/82
- 15 (3-12) Jane Neff at Illinois State, 10/20/82
- 15 (4-11) Stephanie Lynch vs. Utah, 9/1/07

\* denotes Big Ten Conference record.



# 2022-23 Purdue Women's Volleyball Combined Team Statistics All games

Page 1/1  
as of Dec 04, 2022

## Game Records

Overall	Conference	Home	Away	Neutral
21 - 11	11 - 9	10 - 5	7 - 6	4 - 0

## Team Box Score

#	Player	SP	Attack					Set		Serve			RE	Dig		BS	Blocking					PTS
			K	K/S	E	TA	PCT	A	A/S	SA	SE	SA/S		DIG	DIG/S		BA	TOT/S	BLK/S	BE	BHE	
1	Torrance, Ava	61	0	0.00	0	1	.000	16	0.26	8	19	0.13	16	98	1.61	0	0	0	0.00	0	0	8.0
3	Renner, Megan	99	51	0.52	16	139	.252	712	7.19	3	13	0.03	0	123	1.24	2	51	53	0.54	5	8	81.5
4	Balensiefer, Grace	73	18	0.25	7	55	.200	511	7.00	9	14	0.12	0	100	1.37	0	18	18	0.25	1	0	36.0
5	Chinn, Maddy	85	133	1.56	56	437	.176	1	0.01	0	0	0.00	7	26	0.31	4	47	51	0.60	6	0	160.5
7	Colvin, Raven	122	269	2.20	98	599	.285	6	0.05	43	59	0.35	1	74	0.61	22	151	173	1.42	19	1	409.5
8	Schermerhorn, Maddie	110	3	0.03	1	23	.087	110	1.00	23	34	0.21	32	508	4.62	0	0	0	0.00	0	0	26.0
9	Myers, Lourdes	29	25	0.86	8	54	.315	0	0.00	0	0	0.00	0	3	0.10	0	16	16	0.55	3	0	33.0
10	Hornung, Ali	122	2	0.02	4	17	-.118	29	0.24	28	26	0.23	15	303	2.48	0	0	0	0.00	1	0	30.0
11	Brown, Emily	96	0	0.00	0	6	.000	33	0.34	20	36	0.21	25	165	1.72	0	0	0	0.00	0	1	20.0
12	Ellis, Emma	93	194	2.09	125	557	.124	0	0.00	0	0	0.00	3	36	0.39	7	30	37	0.40	4	0	216.0
16	Koch, Madeline	92	188	2.04	97	480	.190	2	0.02	0	1	0.00	0	35	0.38	6	56	62	0.67	16	2	222.0
17	Hudson, Eva	122	515	4.22	176	1420	.239	10	0.08	34	15	0.28	21	249	2.04	7	54	61	0.50	5	0	583.0
19	Yim, Sydney	4	0	0.00	0	0	.000	2	0.50	0	0	0.00	0	2	0.50	0	1	1	0.25	0	0	0.5
20	Clayton, Hannah	114	163	1.43	60	413	.249	4	0.04	0	0	0.00	1	10	0.09	14	84	98	0.86	9	0	219.0
22	Rastovski, Emily	10	8	0.80	4	20	.200	0	0.00	0	0	0.00	0	0	0.00	0	2	2	0.20	0	0	9.0
<b>PURDUE</b>		<b>122</b>	<b>1569</b>	<b>12.86</b>	<b>652</b>	<b>4221</b>	<b>.217</b>	<b>1436</b>	<b>11.77</b>	<b>168</b>	<b>217</b>	<b>1.38</b>	<b>134</b>	<b>1732</b>	<b>14.20</b>	<b>62</b>	<b>510</b>	<b>317</b>	<b>2.60</b>	<b>69</b>	<b>12</b>	<b>2,054.0</b>
<b>Opponents</b>		<b>122</b>	<b>1535</b>	<b>12.58</b>	<b>701</b>	<b>4294</b>	<b>.194</b>	<b>1455</b>	<b>11.93</b>	<b>134</b>	<b>246</b>	<b>1.10</b>	<b>169</b>	<b>1735</b>	<b>14.22</b>	<b>47</b>	<b>440</b>	<b>267</b>	<b>2.19</b>	<b>46</b>	<b>22</b>	<b>1,936.0</b>

## Team statistics

	PURDUE	OPP
<b>ATTACK</b>		
Kills	1569	1535
Errors	652	701
Total Attacks	4221	4294
Attack Pct	.217	.194
Kills/Set	12.86	12.58
<b>SET</b>		
Assists	1436	1455
Attempts	4078	4243
Assist Pct	.352	.343
Assists/Set	11.77	11.93
<b>SERVE</b>		
Aces	168	134
Errors	217	246
Attempts	2743	2586
Serve Pct	.921	.905
Aces/Set	1.38	1.10
<b>SERVE RECEPTIONS</b>		
Errors	134	169
Errors/Set	1.10	1.39
Attempts	2340	2526
Reception Pct	.943	.999
<b>DEFENSE</b>		
Digs	1732	1735
Digs/Set	14.20	14.22
<b>BLOCKING</b>		
Block solo	62	47
Block Assist	510	440
Total Blocks	317	267
Blocks/Set	2.60	2.19
Block Errors	69	46
Ball handling errors	12	22
<b>ATTENDANCE</b>		
Total	35611	34721
Dates/Avg Per Date	15/2374	13/2671
Neutral Site #/Avg	4/80	-
Current win streak	0	-
Home win streak	0	-

## Team Results

Date	Opponent	Score	Score-by-set	Att.
08/26/2022	vs Bowling Green	W 3-0	25-23,25-18,25-23	103
08/27/2022	vs Loyola Chicago	W 3-0	25-14,25-23,25-19	101
08/27/2022	at Tennessee	W 3-1	20-25,25-23,25-18,25-19	1901
09/02/2022	Bradley	W 3-0	25-13,25-14,25-15	2100
09/02/2022	Utah	W 3-2	25-17,22-25,25-18,26-28,15-9	2282
09/03/2022	Milwaukee	W 3-1	25-15,25-17,18-25,25-23	2249
09/09/2022	at Louisville	L 0-3	18-25,20-25,25-27	987
09/10/2022	vs Xavier	W 3-0	25-19,25-17,25-13	114
09/15/2022	Northern Ky.	W 3-0	25-17,25-23,25-12	2415
09/17/2022	Ball St.	W 3-0	25-11,25-23,30-28	2415
* 09/23/2022	Minnesota	W 3-0	25-18,25-23,32-30	2415
* 09/25/2022	at Iowa	W 3-1	29-27,19-25,25-16,25-18	1731
* 09/30/2022	at Illinois	W 3-2	25-17,25-17,23-25,17-25,16-14	2648
* 10/02/2022	Rutgers	W 3-0	25-22,25-20,25-13	2415
* 10/05/2022	Iowa	W 3-2	25-23,17-25,25-21,22-25,15-9	2415
* 10/08/2022	Wisconsin	L 1-3	25-16,19-25,18-25,28-30	2415
* 10/14/2022	at Indiana	W 3-2	24-26,25-22,15-25,25-15,15-10	2512
* 10/16/2022	Maryland	L 0-3	22-25,19-25,23-25	2415
* 10/19/2022	Nebraska	L 0-3	21-25,20-25,18-25	2415
* 10/22/2022	at Minnesota	L 1-3	25-27,25-23,22-25,19-25	4865
* 10/28/2022	at Northwestern	L 2-3	23-25,25-23,18-25,25-17,11-15	1624
* 10/30/2022	Indiana	W 3-1	18-25,25-15,25-10,25-13	2415
* 11/04/2022	at Michigan St.	W 3-1	18-25,26-24,25-17,25-16	2595
* 11/06/2022	at Michigan	W 3-1	25-21,25-15,19-25,25-20	1881
* 11/10/2022	Ohio St.	L 1-3	14-25,25-23,16-25,13-25	2415
* 11/12/2022	Penn St.	L 1-3	25-21,19-25,25-27,19-25	2415
* 11/18/2022	Michigan	W 3-1	25-23,23-25,25-21,25-22	2415
* 11/20/2022	at Nebraska	L 0-3	22-25,20-25,11-25	8248
* 11/23/2022	at Maryland	W 3-1	22-25,25-15,25-22,30-28	1171
* 11/25/2022	at Penn St.	L 2-3	25-23,25-27,17-25,25-15,8-15	3574
12/02/2022	vs Tennessee	W 3-2	14-25,25-14,22-25,25-22,15-11	0
12/03/2022	at Louisville	L 0-3	19-25,21-25,23-25	984



# 2022-23 Purdue Women's Volleyball Team Match-by-Match All games

Page 1/1  
as of Dec 04, 2022

Date	Opponent	SP	Attack				Set			Serve				Recept			Blocking					BHE	POINTS	SCORE
			K	E	TA	PCT	A	TA	PCT	SA	SE	TA	PCT	RE	TA	PCT	DIG	BS	BA	BE	TOTAL			
08/26/2022	vs Bowling Green	3	36	10	99	.263	34	100	.340	5	5	74	.932	3	58	.948	50	0	20	5	10.0	0	51.0	3-0
08/27/2022	vs Loyola Chicago	3	38	13	85	.294	35	80	.438	2	7	73	.904	3	50	.940	35	2	14	1	9.0	0	49.0	3-0
08/27/2022	at Tennessee	4	59	11	147	.327	54	140	.386	5	7	94	.926	4	77	.948	61	1	12	2	7.0	1	71.0	3-1
09/02/2022	Bradley	3	33	9	82	.293	27	76	.355	8	6	74	.919	2	36	.944	38	1	14	6	8.0	0	49.0	3-0
09/02/2022	Utah	5	70	19	171	.298	59	156	.378	11	10	113	.912	3	89	.966	64	1	18	0	10.0	0	91.0	3-2
09/03/2022	Milwaukee	4	58	24	142	.239	41	136	.375	4	5	92	.946	2	74	.973	56	4	24	4	16.0	0	79.0	3-1
09/09/2022	at Louisville	3	42	18	127	.189	38	123	.309	4	10	65	.846	5	69	.928	45	1	6	4	4.0	1	50.0	0-3
09/10/2022	vs Xavier	3	51	8	102	.422	50	102	.490	7	7	74	.905	1	48	.979	45	2	6	0	5.0	2	63.0	3-0
09/15/2022	Northern Ky.	3	46	15	98	.316	40	88	.455	3	8	74	.892	4	46	.913	44	2	16	3	10.0	1	59.0	3-0
09/17/2022	Ball St.	3	45	21	121	.198	41	110	.373	4	7	78	.910	1	58	.983	55	3	22	1	14.0	0	63.0	3-0
09/23/2022	Minnesota	3	51	20	125	.248	47	115	.409	5	7	81	.914	1	67	.985	50	2	10	1	7.0	0	63.0	3-0
09/25/2022	at Iowa	4	61	24	132	.280	57	134	.425	4	3	97	.969	6	80	.925	46	1	18	5	10.0	0	75.0	3-1
09/30/2022	at Illinois	5	58	21	139	.266	52	145	.359	6	8	106	.925	5	83	.940	70	3	6	1	6.0	0	70.0	3-2
10/02/2022	Rutgers	3	44	11	85	.388	36	71	.507	6	4	74	.946	6	44	.864	34	0	10	2	5.0	0	55.0	3-0
10/05/2022	Iowa	5	58	28	159	.189	52	152	.342	8	4	104	.962	11	92	.880	63	3	16	3	11.0	0	77.0	3-2
10/08/2022	Wisconsin	4	41	23	140	.129	37	132	.280	4	4	91	.956	7	79	.911	62	2	14	1	9.0	0	54.0	1-3
10/14/2022	at Indiana	5	56	26	156	.192	53	151	.351	6	12	103	.883	7	84	.917	70	0	16	0	8.0	0	70.0	3-2
10/16/2022	Maryland	3	35	21	122	.115	32	119	.269	5	4	66	.939	6	70	.914	47	2	14	4	9.0	1	49.0	0-3
10/19/2022	Nebraska	3	36	21	107	.140	33	103	.320	1	8	61	.869	3	64	.953	34	0	16	2	8.0	0	45.0	0-3
10/22/2022	at Minnesota	4	57	30	169	.160	56	168	.333	6	6	92	.935	3	94	.968	65	4	16	1	12.0	1	75.0	1-3
10/28/2022	at Northwestern	5	54	22	168	.190	48	170	.282	6	7	103	.932	8	99	.919	61	1	31	3	16.5	1	76.5	2-3
10/30/2022	Indiana	4	45	11	98	.347	44	98	.449	6	6	92	.935	6	55	.891	44	4	27	2	17.5	2	68.5	3-1
11/04/2022	at Michigan St.	4	57	21	139	.259	50	134	.373	6	13	93	.860	5	74	.932	52	1	16	2	9.0	0	72.0	3-1
11/06/2022	at Michigan	4	51	18	120	.275	48	122	.393	6	10	93	.892	3	70	.957	55	1	16	2	9.0	0	66.0	3-1
11/10/2022	Ohio St.	4	41	25	130	.123	37	123	.301	3	2	69	.971	3	84	.964	48	0	14	2	7.0	0	51.0	1-3
11/12/2022	Penn St.	4	51	22	148	.196	49	138	.355	4	10	89	.888	6	87	.931	61	2	18	1	11.0	0	66.0	1-3
11/18/2022	Michigan	4	54	19	145	.241	51	140	.364	5	8	97	.918	8	88	.909	59	2	23	1	13.5	2	72.5	3-1
11/20/2022	at Nebraska	3	28	26	129	.016	26	127	.205	3	5	54	.907	2	71	.972	53	2	13	1	8.5	0	39.5	0-3
11/23/2022	at Maryland	4	53	34	190	.100	49	186	.263	10	5	101	.950	2	90	.978	84	5	22	2	16.0	0	79.0	3-1
11/25/2022	at Penn St.	5	57	38	174	.109	55	174	.316	5	3	101	.970	0	100	1.000	68	5	24	0	17.0	0	79.0	2-3
12/02/2022	vs Tennessee	5	61	22	153	.255	57	149	.383	9	9	101	.911	4	93	.957	61	4	14	3	11.0	0	81.0	3-2
12/03/2022	at Louisville	3	42	21	119	.176	38	116	.328	0	7	64	.891	4	67	.940	52	1	4	4	3.0	0	45.0	0-3
<b>Totals</b>		<b>122</b>	<b>1569</b>	<b>652</b>	<b>4221</b>	<b>.217</b>	<b>1436</b>	<b>4078</b>	<b>.352</b>	<b>168</b>	<b>217</b>	<b>2743</b>	<b>.921</b>	<b>134</b>	<b>2340</b>	<b>.943</b>	<b>1732</b>	<b>62</b>	<b>510</b>	<b>69</b>	<b>317.0</b>	<b>12</b>	<b>2054.0</b>	
<b>Opponents</b>		<b>122</b>	<b>1535</b>	<b>701</b>	<b>4294</b>	<b>.194</b>	<b>1455</b>	<b>4243</b>	<b>.343</b>	<b>134</b>	<b>246</b>	<b>2586</b>	<b>.905</b>	<b>169</b>	<b>2526</b>	<b>.933</b>	<b>1735</b>	<b>47</b>	<b>440</b>	<b>46</b>	<b>267.0</b>	<b>22</b>	<b>1936.0</b>	

## Team Averages

Sets Played	Kills per set	Assists per set	Service aces per set	Digs per set	Blocks per set	Points per set	Ball handling error per set	Reception errors per set
122	12.86	11.77	1.38	14.20	2.60	16.84	0.10	1.10





**2022-23 Purdue Women's Volleyball**  
**Individual Match-by-Match**  
**All games**

Page 1/15  
as of Dec 04, 2022

**#1 TORRANCE, Ava**

Date	Opponent	SP	Attack				Set			Serve				Recept			Blocking					Team			
			K	E	TA	PCT	A	TA	PCT	SA	SE	TA	PCT	RE	TA	PCT	DIG	BS	BA	BE	TOTAL	BHE	POINTS	HIT%	SCORE
08/27/2022	vs Loyola Chicago	3	0	0	0	.000	0	1	.000	0	1	19	.947	0	10	1.000	8	0	0	0	0.0	0	0.0	.294	3-0
09/02/2022	Bradley	3	0	0	0	.000	0	0	.000	1	2	13	.846	0	6	1.000	4	0	0	0	0.0	0	1.0	.293	3-0
09/03/2022	Milwaukee	4	0	0	0	.000	1	1	1.000	0	1	14	.929	1	21	.952	4	0	0	0	0.0	0	0.0	.239	3-1
09/09/2022	at Louisville	1	0	0	0	.000	0	0	.000	0	0	0	.000	0	0	.000	0	0	0	0	0.0	0	0.0	.189	0-3
09/10/2022	vs Xavier	3	0	0	0	.000	1	2	.500	4	1	21	.952	0	8	1.000	4	0	0	0	0.0	0	4.0	.422	3-0
09/15/2022	Northern Ky.	1	0	0	0	.000	0	0	.000	0	1	4	.750	0	0	.000	0	0	0	0	0.0	0	0.0	.316	3-0
09/17/2022	Ball St.	3	0	0	0	.000	0	0	.000	0	2	12	.833	1	20	.950	7	0	0	0	0.0	0	0.0	.198	3-0
09/25/2022	at Iowa	*4	0	0	0	.000	1	1	1.000	0	0	13	1.000	1	23	.957	4	0	0	0	0.0	0	0.0	.280	3-1
09/30/2022	at Illinois	*5	0	0	0	.000	2	5	.400	0	2	15	.867	0	3	1.000	12	0	0	0	0.0	0	0.0	.266	3-2
10/02/2022	Rutgers	*3	0	0	0	.000	3	4	.750	1	1	14	.929	3	11	.727	7	0	0	0	0.0	0	1.0	.388	3-0
10/05/2022	Iowa	3	0	0	0	.000	1	2	.500	0	1	10	.900	1	9	.889	6	0	0	0	0.0	0	0.0	.189	3-2
10/14/2022	at Indiana	5	0	0	1	.000	0	2	.000	0	3	13	.769	0	16	1.000	8	0	0	0	0.0	0	0.0	.192	3-2
10/16/2022	Maryland	2	0	0	0	.000	1	4	.250	1	1	4	.750	2	12	.833	3	0	0	0	0.0	0	1.0	.115	0-3
10/19/2022	Nebraska	1	0	0	0	.000	0	0	.000	1	0	3	1.000	1	2	.500	0	0	0	0	0.0	0	1.0	.140	0-3
10/28/2022	at Northwestern	2	0	0	0	.000	0	2	.000	0	0	3	1.000	1	7	.857	6	0	0	0	0.0	0	0.0	.190	2-3
11/04/2022	at Michigan St.	1	0	0	0	.000	0	0	.000	0	0	1	1.000	0	0	.000	1	0	0	0	0.0	0	0.0	.259	3-1
11/06/2022	at Michigan	2	0	0	0	.000	0	0	.000	0	0	2	1.000	0	0	.000	0	0	0	0	0.0	0	0.0	.275	3-1
11/10/2022	Ohio St.	4	0	0	0	.000	2	5	.400	0	1	10	.900	0	10	1.000	5	0	0	0	0.0	0	0.0	.123	1-3
11/12/2022	Penn St.	2	0	0	0	.000	0	0	.000	0	0	2	1.000	0	0	.000	0	0	0	0	0.0	0	0.0	.196	1-3
11/18/2022	Michigan	3	0	0	0	.000	1	3	.333	0	2	10	.800	4	21	.810	10	0	0	0	0.0	0	0.0	.241	3-1
11/20/2022	at Nebraska	1	0	0	0	.000	0	0	.000	0	0	0	.000	0	1	1.000	0	0	0	0	0.0	0	0.0	.016	0-3
11/23/2022	at Maryland	4	0	0	0	.000	3	5	.600	0	0	15	1.000	1	21	.952	9	0	0	0	0.0	0	0.0	.100	3-1
12/03/2022	at Louisville	1	0	0	0	.000	0	0	.000	0	0	1	1.000	0	0	.000	0	0	0	0	0.0	0	0.0	.176	0-3
<b>Totals</b>		<b>61</b>	<b>0</b>	<b>0</b>	<b>1</b>	<b>.000</b>	<b>16</b>	<b>37</b>	<b>.432</b>	<b>8</b>	<b>19</b>	<b>199</b>	<b>.905</b>	<b>16</b>	<b>201</b>	<b>.920</b>	<b>98</b>	<b>0</b>	<b>0</b>	<b>0</b>	<b>0.0</b>	<b>0</b>	<b>8.0</b>		

**Player Averages**

Sets Played	Kills per set	Assists per set	Service aces per set	Digs per set	Blocks per set	Points per set
61	0.00	0.26	0.13	1.61	0.00	0.13



**2022-23 Purdue Women's Volleyball  
Individual Match-by-Match  
All games**

Page 2/15  
as of Dec 04, 2022

**#3 RENNER, Megan**

Date	Opponent	SP	Attack				Set			Serve				Recept			Blocking					Team			
			K	E	TA	PCT	A	TA	PCT	SA	SE	TA	PCT	RE	TA	PCT	DIG	BS	BA	BE	TOTAL	BHE	POINTS	HIT%	SCORE
08/26/2022	vs Bowling Green	*3	0	0	3	.000	30	78	.385	1	0	11	1.000	0	0	.000	8	0	1	0	1.0	0	1.5	.263	3-0
08/27/2022	vs Loyola Chicago	*3	2	0	3	.667	30	67	.448	0	0	7	1.000	0	1	1.000	6	0	2	0	2.0	0	3.0	.294	3-0
08/27/2022	at Tennessee	*3	0	0	0	.000	12	44	.273	0	0	4	1.000	0	0	.000	2	0	0	0	0.0	0	0.0	.327	3-1
09/02/2022	Bradley	*3	1	1	4	.000	21	60	.350	0	1	8	.875	0	0	.000	6	0	0	0	0.0	0	1.0	.293	3-0
09/02/2022	Utah	*5	3	0	7	.429	54	136	.397	0	1	11	.909	0	0	.000	4	0	2	0	2.0	0	4.0	.298	3-2
09/03/2022	Milwaukee	*4	3	1	5	.400	35	100	.350	0	0	10	1.000	0	0	.000	3	0	5	0	5.0	0	5.5	.239	3-1
09/09/2022	at Louisville	*3	0	2	5	-.400	31	99	.313	0	3	9	.667	0	0	.000	4	0	0	1	0.0	1	0.0	.189	0-3
09/10/2022	vs Xavier	*3	3	0	4	.750	39	74	.527	0	1	7	.857	0	0	.000	7	0	1	0	1.0	2	3.5	.422	3-0
09/15/2022	Northern Ky.	*3	4	0	6	.667	29	61	.475	0	1	8	.875	0	0	.000	8	0	0	0	0.0	0	4.0	.316	3-0
09/17/2022	Ball St.	*3	2	1	8	.125	37	94	.394	0	1	8	.875	0	0	.000	7	0	4	0	4.0	0	4.0	.198	3-0
09/25/2022	at Iowa	3	1	0	5	.200	15	32	.469	0	0	0	.000	0	0	.000	0	0	3	0	3.0	0	2.5	.280	3-1
09/30/2022	at Illinois	5	1	0	6	.167	15	48	.313	0	0	0	.000	0	1	1.000	0	1	0	0	1.0	0	2.0	.266	3-2
10/02/2022	Rutgers	3	3	0	7	.429	12	25	.480	0	0	0	.000	0	0	.000	0	0	0	1	0.0	0	3.0	.388	3-0
10/05/2022	Iowa	5	3	0	3	1.000	15	49	.306	0	0	0	.000	0	0	.000	1	0	2	1	2.0	0	4.0	.189	3-2
10/08/2022	Wisconsin	4	3	0	5	.600	11	44	.250	0	0	0	.000	0	0	.000	2	1	4	0	5.0	0	6.0	.129	1-3
10/14/2022	at Indiana	5	1	1	5	.000	41	99	.414	0	1	10	.900	0	0	.000	12	0	1	0	1.0	0	1.5	.192	3-2
10/16/2022	Maryland	*3	2	1	5	.200	15	54	.278	0	0	3	1.000	0	1	1.000	2	0	3	2	3.0	0	3.5	.115	0-3
10/19/2022	Nebraska	3	1	0	3	.333	14	34	.412	0	1	2	.500	0	0	.000	2	0	3	0	3.0	0	2.5	.140	0-3
10/22/2022	at Minnesota	4	2	3	11	-.091	19	66	.288	0	0	0	.000	0	0	.000	1	0	3	0	3.0	1	3.5	.160	1-3
10/28/2022	at Northwestern	5	3	0	9	.333	24	97	.247	0	0	7	1.000	0	0	.000	3	0	6	0	6.0	1	6.0	.190	2-3
10/30/2022	Indiana	*4	0	1	2	-.500	40	79	.506	2	1	12	.917	0	0	.000	4	0	5	0	5.0	2	4.5	.347	3-1
11/04/2022	at Michigan St.	*4	3	2	12	.083	42	109	.385	0	2	11	.818	0	0	.000	11	0	2	0	2.0	0	4.0	.259	3-1
11/06/2022	at Michigan	*4	5	0	8	.625	42	107	.393	0	0	13	1.000	0	0	.000	4	0	2	0	2.0	0	6.0	.275	3-1
11/10/2022	Ohio St.	*4	2	1	3	.333	28	99	.283	0	0	10	1.000	0	0	.000	8	0	0	0	0.0	0	2.0	.123	1-3
11/12/2022	Penn St.	*4	3	1	7	.286	42	116	.362	0	0	10	1.000	0	0	.000	10	0	1	0	1.0	0	3.5	.196	1-3
11/18/2022	Michigan	*2	0	0	1	.000	6	28	.214	0	0	1	1.000	0	0	.000	1	0	1	0	1.0	1	0.5	.241	3-1
11/20/2022	at Nebraska	*1	0	0	0	.000	9	24	.375	0	0	2	1.000	0	0	.000	6	0	0	0	0.0	0	0.0	.016	0-3
11/25/2022	at Penn St.	2	0	1	1	-1.000	4	10	.400	0	0	0	.000	0	0	.000	1	0	0	0	0.0	0	0.0	.109	2-3
12/02/2022	vs Tennessee	*1	0	0	1	.000	0	10	.000	0	0	0	.000	0	0	.000	0	0	0	0	0.0	0	0.0	.255	3-2
<b>Totals</b>		<b>99</b>	<b>51</b>	<b>16</b>	<b>139</b>	<b>.252</b>	<b>712</b>	<b>1943</b>	<b>.366</b>	<b>3</b>	<b>13</b>	<b>164</b>	<b>.921</b>	<b>0</b>	<b>3</b>	<b>1.000</b>	<b>123</b>	<b>2</b>	<b>51</b>	<b>5</b>	<b>53.0</b>	<b>8</b>	<b>81.5</b>		

**Player Averages**

Sets Played	Kills per set	Assists per set	Service aces per set	Digs per set	Blocks per set	Points per set
99	0.52	7.19	0.03	1.24	0.54	0.82



**2022-23 Purdue Women's Volleyball**  
**Individual Match-by-Match**  
**All games**

Page 3/15  
as of Dec 04, 2022

**#4 BALENSIEFER, Grace**

Date	Opponent	SP	Attack				Set			Serve				Recept			Blocking					Team			
			K	E	TA	PCT	A	TA	PCT	SA	SE	TA	PCT	RE	TA	PCT	DIG	BS	BA	BE	TOTAL	BHE	POINTS	HIT%	SCORE
08/27/2022	at Tennessee	3	3	0	4	.750	34	77	.442	0	2	5	.600	0	0	.000	5	0	3	0	3.0	0	4.5	.327	3-1
09/02/2022	Bradley	1	0	0	0	.000	0	0	.000	0	0	0	.000	0	0	.000	0	0	0	0	0.0	0	0.0	.293	3-0
09/03/2022	Milwaukee	1	0	0	0	.000	7	12	.583	0	0	0	.000	0	0	.000	0	0	0	1	0.0	0	0.0	.239	3-1
09/10/2022	vs Xavier	1	0	0	1	.000	3	7	.429	0	0	0	.000	0	0	.000	0	0	0	0	0.0	0	0.0	.422	3-0
09/15/2022	Northern Ky.	1	0	0	0	.000	1	2	.500	0	0	0	.000	0	0	.000	0	0	0	0	0.0	0	0.0	.316	3-0
09/23/2022	Minnesota	*3	1	0	6	.167	41	103	.398	1	1	8	.875	0	0	.000	1	0	0	0	0.0	0	2.0	.248	3-0
09/25/2022	at Iowa	*4	1	0	3	.333	37	77	.481	1	1	13	.923	0	0	.000	4	0	1	0	1.0	0	2.5	.280	3-1
09/30/2022	at Illinois	*5	1	0	3	.333	31	69	.449	0	0	11	1.000	0	0	.000	8	0	2	0	2.0	0	2.0	.266	3-2
10/02/2022	Rutgers	*3	1	0	1	1.000	16	32	.500	1	0	8	1.000	0	0	.000	1	0	0	0	0.0	0	2.0	.388	3-0
10/05/2022	Iowa	*5	0	1	1	-1.000	30	79	.380	0	0	12	1.000	0	0	.000	10	0	0	0	0.0	0	0.0	.189	3-2
10/08/2022	Wisconsin	*4	0	0	0	.000	20	60	.333	1	0	14	1.000	0	0	.000	5	0	0	0	0.0	0	1.0	.129	1-3
10/14/2022	at Indiana	*2	0	0	1	.000	5	22	.227	0	0	2	1.000	0	0	.000	3	0	0	0	0.0	0	0.0	.192	3-2
10/16/2022	Maryland	2	0	0	0	.000	9	37	.243	0	1	5	.800	0	0	.000	4	0	0	0	0.0	0	0.0	.115	0-3
10/19/2022	Nebraska	*3	0	0	0	.000	13	53	.245	0	0	5	1.000	0	0	.000	3	0	0	0	0.0	0	0.0	.140	0-3
10/22/2022	at Minnesota	*4	0	0	0	.000	32	76	.421	0	1	9	.889	0	0	.000	6	0	1	0	1.0	0	0.5	.160	1-3
10/28/2022	at Northwestern	*3	0	0	0	.000	15	39	.385	0	1	7	.857	0	0	.000	5	0	0	0	0.0	0	0.0	.190	2-3
10/30/2022	Indiana	1	0	0	0	.000	2	6	.333	0	0	1	1.000	0	0	.000	2	0	0	0	0.0	0	0.0	.347	3-1
11/04/2022	at Michigan St.	1	0	0	0	.000	3	4	.750	0	0	0	.000	0	0	.000	0	0	0	0	0.0	0	0.0	.259	3-1
11/10/2022	Ohio St.	1	1	0	1	1.000	4	8	.500	0	0	1	1.000	0	0	.000	0	0	0	0	0.0	0	1.0	.123	1-3
11/12/2022	Penn St.	1	0	0	0	.000	3	5	.600	0	0	1	1.000	0	0	.000	0	0	0	0	0.0	0	0.0	.196	1-3
11/18/2022	Michigan	4	2	0	4	.500	36	92	.391	1	2	14	.857	0	0	.000	4	0	3	0	3.0	0	4.5	.241	3-1
11/20/2022	at Nebraska	3	2	1	7	.143	10	70	.143	1	0	6	1.000	0	0	.000	5	0	1	0	1.0	0	3.5	.016	0-3
11/23/2022	at Maryland	*4	2	1	6	.167	41	149	.275	0	1	10	.900	0	0	.000	12	0	3	0	3.0	0	3.5	.100	3-1
11/25/2022	at Penn St.	*5	1	3	8	-.250	41	124	.331	2	0	16	1.000	0	0	.000	11	0	3	0	3.0	0	4.5	.109	2-3
12/02/2022	vs Tennessee	5	2	1	6	.167	45	107	.421	1	2	17	.882	0	2	1.000	6	0	1	0	1.0	0	3.5	.255	3-2
12/03/2022	at Louisville	*3	1	0	3	.333	32	97	.330	0	2	9	.778	0	0	.000	5	0	0	0	0.0	0	1.0	.176	0-3
<b>Totals</b>		<b>73</b>	<b>18</b>	<b>7</b>	<b>55</b>	<b>.200</b>	<b>511</b>	<b>1407</b>	<b>.363</b>	<b>9</b>	<b>14</b>	<b>174</b>	<b>.920</b>	<b>0</b>	<b>2</b>	<b>1.000</b>	<b>100</b>	<b>0</b>	<b>18</b>	<b>1</b>	<b>18.0</b>	<b>0</b>	<b>36.0</b>		

**Player Averages**

Sets Played	Kills per set	Assists per set	Service aces per set	Digs per set	Blocks per set	Points per set
73	0.25	7.00	0.12	1.37	0.25	0.49





**2022-23 Purdue Women's Volleyball**  
**Individual Match-by-Match**  
**All games**

Page 4/15  
as of Dec 04, 2022

**#5 CHINN, Maddy**

Date	Opponent	SP	Attack				Set			Serve				Recept			Blocking					Team			
			K	E	TA	PCT	A	TA	PCT	SA	SE	TA	PCT	RE	TA	PCT	DIG	BS	BA	BE	TOTAL	BHE	POINTS	HIT%	SCORE
08/26/2022	vs Bowling Green	3	2	2	17	.000	0	1	.000	0	0	0	.000	0	8	1.000	0	0	2	1	2.0	0	3.0	.263	3-0
08/27/2022	vs Loyola Chicago	2	1	2	7	-.143	0	0	.000	0	0	0	.000	2	3	.333	0	0	1	0	1.0	0	1.5	.294	3-0
08/27/2022	at Tennessee	4	10	2	29	.276	0	1	.000	0	0	0	.000	1	8	.875	2	0	0	0	0.0	0	10.0	.327	3-1
09/02/2022	Bradley	2	1	1	4	.000	0	0	.000	0	0	0	.000	1	5	.800	0	0	0	0	0.0	0	1.0	.293	3-0
09/02/2022	Utah	5	9	5	28	.143	1	2	.500	0	0	0	.000	1	10	.900	2	0	2	0	2.0	0	10.0	.298	3-2
09/03/2022	Milwaukee	*4	7	3	18	.222	0	1	.000	0	0	0	.000	0	1	1.000	1	0	3	0	3.0	0	8.5	.239	3-1
09/09/2022	at Louisville	*3	4	0	17	.235	0	0	.000	0	0	0	.000	0	0	.000	2	1	3	0	4.0	0	6.5	.189	0-3
09/23/2022	Minnesota	2	2	2	9	.000	0	0	.000	0	0	0	.000	0	0	.000	0	0	0	0	0.0	0	2.0	.248	3-0
09/25/2022	at Iowa	2	4	2	11	.182	0	1	.000	0	0	0	.000	0	2	1.000	0	0	0	1	0.0	0	4.0	.280	3-1
09/30/2022	at Illinois	1	0	0	3	.000	0	0	.000	0	0	0	.000	0	0	.000	0	0	0	0	0.0	0	0.0	.266	3-2
10/02/2022	Rutgers	3	2	3	12	-.083	0	1	.000	0	0	0	.000	0	0	.000	0	0	1	0	1.0	0	2.5	.388	3-0
10/05/2022	Iowa	2	1	2	10	-.100	0	2	.000	0	0	0	.000	0	1	1.000	0	0	1	0	1.0	0	1.5	.189	3-2
10/08/2022	Wisconsin	2	0	1	6	-.167	0	0	.000	0	0	0	.000	0	1	1.000	2	0	0	0	0.0	0	0.0	.129	1-3
10/14/2022	at Indiana	3	2	1	9	.111	0	0	.000	0	0	0	.000	0	0	.000	0	0	2	0	2.0	0	3.0	.192	3-2
10/16/2022	Maryland	2	6	2	19	.211	0	0	.000	0	0	0	.000	0	0	.000	1	0	1	0	1.0	0	6.5	.115	0-3
10/19/2022	Nebraska	1	2	0	4	.500	0	1	.000	0	0	1	1.000	0	0	.000	0	0	0	0	0.0	0	2.0	.140	0-3
10/28/2022	at Northwestern	5	12	4	37	.216	0	4	.000	0	0	0	.000	0	0	.000	1	0	1	0	1.0	0	12.5	.190	2-3
10/30/2022	Indiana	4	8	1	16	.438	0	1	.000	0	0	0	.000	1	2	.500	1	1	6	1	7.0	0	12.0	.347	3-1
11/04/2022	at Michigan St.	*4	13	4	28	.321	0	2	.000	0	0	0	.000	0	0	.000	3	1	3	0	4.0	0	15.5	.259	3-1
11/06/2022	at Michigan	*4	7	2	16	.313	0	1	.000	0	0	0	.000	0	0	.000	2	0	3	0	3.0	0	8.5	.275	3-1
11/10/2022	Ohio St.	*3	3	2	13	.077	0	0	.000	0	0	0	.000	0	5	1.000	0	0	2	1	2.0	0	4.0	.123	1-3
11/12/2022	Penn St.	*3	3	1	9	.222	0	1	.000	0	0	0	.000	0	0	.000	0	0	1	0	1.0	0	3.5	.196	1-3
11/18/2022	Michigan	*4	7	2	24	.208	0	0	.000	0	0	0	.000	0	0	.000	2	0	4	1	4.0	0	9.0	.241	3-1
11/20/2022	at Nebraska	*3	7	2	21	.238	0	1	.000	0	0	0	.000	0	0	.000	1	0	3	0	3.0	0	8.5	.016	0-3
11/23/2022	at Maryland	*4	3	2	16	.063	0	1	.000	0	0	0	.000	0	0	.000	3	0	2	0	2.0	0	4.0	.100	3-1
11/25/2022	at Penn St.	5	10	2	22	.364	0	0	.000	0	0	0	.000	0	0	.000	1	0	4	0	4.0	0	12.0	.109	2-3
12/02/2022	vs Tennessee	3	6	5	24	.042	0	2	.000	0	0	0	.000	1	5	.800	2	0	2	1	2.0	0	7.0	.255	3-2
12/03/2022	at Louisville	2	1	1	8	.000	0	1	.000	0	0	0	.000	0	1	1.000	0	1	0	0	1.0	0	2.0	.176	0-3
<b>Totals</b>		<b>85</b>	<b>133</b>	<b>56</b>	<b>437</b>	<b>.176</b>	<b>1</b>	<b>24</b>	<b>.042</b>	<b>0</b>	<b>0</b>	<b>1</b>	<b>1.000</b>	<b>7</b>	<b>52</b>	<b>.865</b>	<b>26</b>	<b>4</b>	<b>47</b>	<b>6</b>	<b>51.0</b>	<b>0</b>	<b>160.5</b>		

**Player Averages**

Sets Played	Kills per set	Assists per set	Service aces per set	Digs per set	Blocks per set	Points per set
85	1.56	0.01	0.00	0.31	0.60	1.89



**2022-23 Purdue Women's Volleyball  
Individual Match-by-Match  
All games**

Page 5/15  
as of Dec 04, 2022

**#7 COLVIN, Raven**

Date	Opponent	SP	Attack				Set			Serve				Recept			Blocking					Team			
			K	E	TA	PCT	A	TA	PCT	SA	SE	TA	PCT	RE	TA	PCT	DIG	BS	BA	BE	TOTAL	BHE	POINTS	HIT%	SCORE
08/26/2022	vs Bowling Green	*3	7	3	20	.200	0	0	.000	1	1	12	.917	0	0	.000	4	0	7	2	7.0	0	11.5	.263	3-0
08/27/2022	vs Loyola Chicago	*3	8	1	15	.467	0	0	.000	0	3	6	.500	0	0	.000	0	1	3	0	4.0	0	10.5	.294	3-0
08/27/2022	at Tennessee	*4	11	1	24	.417	1	3	.333	1	0	11	1.000	0	4	1.000	6	0	3	0	3.0	0	13.5	.327	3-1
09/02/2022	Bradley	*3	5	0	13	.385	0	1	.000	1	0	7	1.000	0	1	1.000	1	0	2	1	2.0	0	7.0	.293	3-0
09/02/2022	Utah	*5	18	3	32	.469	1	3	.333	5	2	22	.909	0	1	1.000	5	0	6	0	6.0	0	26.0	.298	3-2
09/03/2022	Milwaukee	*4	5	3	14	.143	1	2	.500	1	2	13	.846	0	0	.000	3	1	7	1	8.0	0	10.5	.239	3-1
09/09/2022	at Louisville	*3	8	1	14	.500	1	1	1.000	2	3	11	.727	0	0	.000	5	0	0	2	0.0	0	10.0	.189	0-3
09/10/2022	vs Xavier	*3	11	2	18	.500	0	1	.000	0	1	9	.889	0	0	.000	0	0	2	0	2.0	0	12.0	.422	3-0
09/15/2022	Northern Ky.	*3	4	3	11	.091	0	2	.000	0	1	7	.857	0	0	.000	2	2	6	1	8.0	0	9.0	.316	3-0
09/17/2022	Ball St.	*3	5	7	19	.105	1	2	.500	2	2	8	.750	0	2	1.000	1	0	7	0	7.0	0	10.5	.198	3-0
09/23/2022	Minnesota	*3	8	3	19	.263	1	2	.500	1	3	15	.800	0	0	.000	6	0	3	0	3.0	0	10.5	.248	3-0
09/25/2022	at Iowa	*4	10	6	21	.190	0	1	.000	1	1	18	.944	0	3	1.000	1	0	7	1	7.0	0	14.5	.280	3-1
09/30/2022	at Illinois	*5	9	4	21	.238	0	2	.000	2	2	20	.900	0	0	.000	4	0	2	0	2.0	0	12.0	.266	3-2
10/02/2022	Rutgers	*3	11	2	15	.600	0	0	.000	1	1	8	.875	0	0	.000	0	0	2	1	2.0	0	13.0	.388	3-0
10/05/2022	Iowa	*5	8	2	21	.286	0	1	.000	3	1	15	.933	0	0	.000	1	1	5	1	6.0	0	14.5	.189	3-2
10/08/2022	Wisconsin	*4	6	1	15	.333	0	0	.000	1	0	15	1.000	0	0	.000	5	1	5	0	6.0	0	10.5	.129	1-3
10/14/2022	at Indiana	*5	8	3	18	.278	0	2	.000	2	4	17	.765	0	1	1.000	2	0	5	0	5.0	0	12.5	.192	3-2
10/16/2022	Maryland	*3	4	1	14	.214	0	1	.000	1	2	13	.846	0	0	.000	2	2	5	0	7.0	0	9.5	.115	0-3
10/19/2022	Nebraska	*3	3	3	8	.000	0	3	.000	0	3	11	.727	0	0	.000	0	0	5	1	5.0	0	5.5	.140	0-3
10/22/2022	at Minnesota	*4	8	6	16	.125	0	0	.000	4	3	18	.833	0	0	.000	3	1	2	1	3.0	0	14.0	.160	1-3
10/28/2022	at Northwestern	*5	7	2	20	.250	0	2	.000	0	2	11	.818	0	1	1.000	4	0	9	0	9.0	0	11.5	.190	2-3
10/30/2022	Indiana	*4	12	2	22	.455	0	1	.000	1	2	11	.818	0	0	.000	1	1	7	1	8.0	0	17.5	.347	3-1
11/04/2022	at Michigan St.	*4	16	0	23	.696	0	1	.000	1	5	12	.583	0	0	.000	7	0	4	0	4.0	0	19.0	.259	3-1
11/06/2022	at Michigan	*4	7	3	17	.235	0	0	.000	1	3	10	.700	0	0	.000	3	0	5	2	5.0	0	10.5	.275	3-1
11/10/2022	Ohio St.	*4	8	5	22	.136	0	1	.000	2	1	14	.929	0	0	.000	2	0	4	0	4.0	0	12.0	.123	1-3
11/12/2022	Penn St.	*4	10	5	20	.250	0	0	.000	1	3	10	.700	1	1	.000	3	0	6	0	6.0	0	14.0	.196	1-3
11/18/2022	Michigan	*4	11	3	22	.364	0	0	.000	0	0	10	1.000	0	1	1.000	0	2	7	0	9.0	1	16.5	.241	3-1
11/20/2022	at Nebraska	*3	6	2	15	.267	0	1	.000	1	2	10	.800	0	0	.000	0	0	5	1	5.0	0	9.5	.016	0-3
11/23/2022	at Maryland	*4	10	9	31	.032	0	0	.000	4	1	13	.923	0	1	1.000	2	5	11	1	16.0	0	24.5	.100	3-1
11/25/2022	at Penn St.	*5	8	5	21	.143	0	0	.000	2	2	21	.905	0	0	.000	1	1	5	0	6.0	0	13.5	.109	2-3
12/02/2022	vs Tennessee	*5	7	3	16	.250	0	1	.000	1	2	13	.846	0	1	1.000	0	4	3	0	7.0	0	13.5	.255	3-2
12/03/2022	at Louisville	*3	10	4	22	.273	0	0	.000	0	1	5	.800	0	0	.000	0	0	1	2	1.0	0	10.5	.176	0-3
<b>Totals</b>		<b>122</b>	<b>269</b>	<b>98</b>	<b>599</b>	<b>.285</b>	<b>6</b>	<b>34</b>	<b>.176</b>	<b>43</b>	<b>59</b>	<b>396</b>	<b>.851</b>	<b>1</b>	<b>17</b>	<b>.941</b>	<b>74</b>	<b>22</b>	<b>151</b>	<b>19</b>	<b>173.0</b>	<b>1</b>	<b>409.5</b>		

**Player Averages**

Sets Played	Kills per set	Assists per set	Service aces per set	Digs per set	Blocks per set	Points per set
122	2.20	0.05	0.35	0.61	1.42	3.36



**2022-23 Purdue Women's Volleyball  
Individual Match-by-Match  
All games**

Page 6/15  
as of Dec 04, 2022

**#8 SCHERMERHORN, Maddie**

Date	Opponent	SP	Attack				Set			Serve				Recept			Blocking					Team			
			K	E	TA	PCT	A	TA	PCT	SA	SE	TA	PCT	RE	TA	PCT	DIG	BS	BA	BE	TOTAL	BHE	POINTS	HIT%	SCORE
08/26/2022	vs Bowling Green	3	0	0	1	.000	4	10	.400	1	0	17	1.000	3	22	.864	18	0	0	0	0.0	0	1.0	.263	3-0
08/27/2022	vs Loyola Chicago	3	0	0	0	.000	4	7	.571	0	2	15	.867	1	15	.933	6	0	0	0	0.0	0	0.0	.294	3-0
08/27/2022	at Tennessee	4	0	0	0	.000	4	10	.400	1	2	19	.895	1	18	.944	18	0	0	0	0.0	0	1.0	.327	3-1
09/02/2022	Bradley	3	0	0	0	.000	4	9	.444	0	2	6	.667	1	14	.929	11	0	0	0	0.0	0	0.0	.293	3-0
09/02/2022	Utah	5	0	0	1	.000	2	10	.200	3	4	24	.833	0	18	1.000	26	0	0	0	0.0	0	3.0	.298	3-2
09/03/2022	Milwaukee	4	0	0	0	.000	4	10	.400	1	0	14	1.000	0	14	1.000	22	0	0	0	0.0	0	1.0	.239	3-1
09/09/2022	at Louisville	3	0	0	2	.000	5	14	.357	0	1	14	.929	1	20	.950	11	0	0	0	0.0	0	0.0	.189	0-3
09/10/2022	vs Xavier	3	0	0	0	.000	5	14	.357	2	2	12	.833	1	13	.923	13	0	0	0	0.0	0	2.0	.422	3-0
09/15/2022	Northern Ky.	3	0	0	0	.000	4	12	.333	1	1	21	.952	0	15	1.000	12	0	0	0	0.0	0	1.0	.316	3-0
09/17/2022	Ball St.	3	0	0	0	.000	3	11	.273	0	0	15	1.000	0	9	1.000	17	0	0	0	0.0	0	0.0	.198	3-0
09/23/2022	Minnesota	3	0	0	1	.000	2	3	.667	3	1	20	.950	0	7	1.000	12	0	0	0	0.0	0	3.0	.248	3-0
10/05/2022	Iowa	5	0	0	2	.000	3	13	.231	1	0	22	1.000	5	28	.821	19	0	0	0	0.0	0	1.0	.189	3-2
10/08/2022	Wisconsin	4	0	1	4	-.250	5	14	.357	0	2	15	.867	1	15	.933	12	0	0	0	0.0	0	0.0	.129	1-3
10/14/2022	at Indiana	5	1	0	1	1.000	7	17	.412	1	3	22	.864	1	31	.968	23	0	0	0	0.0	0	2.0	.192	3-2
10/16/2022	Maryland	3	0	0	2	.000	4	12	.333	1	0	16	1.000	1	26	.962	16	0	0	0	0.0	0	1.0	.115	0-3
10/19/2022	Nebraska	3	0	0	0	.000	3	7	.429	0	1	11	.909	0	31	1.000	14	0	0	0	0.0	0	0.0	.140	0-3
10/22/2022	at Minnesota	4	0	0	0	.000	3	13	.231	0	1	12	.917	1	18	.944	21	0	0	0	0.0	0	0.0	.160	1-3
10/28/2022	at Northwestern	5	0	0	1	.000	5	11	.455	1	0	22	1.000	1	20	.950	23	0	0	0	0.0	0	1.0	.190	2-3
10/30/2022	Indiana	4	0	0	0	.000	1	8	.125	0	1	18	.944	2	18	.889	18	0	0	0	0.0	0	0.0	.347	3-1
11/04/2022	at Michigan St.	4	0	0	0	.000	3	11	.273	1	2	17	.882	0	15	1.000	12	0	0	0	0.0	0	1.0	.259	3-1
11/06/2022	at Michigan	4	1	0	1	1.000	0	5	.000	1	2	16	.875	1	17	.941	28	0	0	0	0.0	0	2.0	.275	3-1
11/10/2022	Ohio St.	4	0	0	0	.000	2	5	.400	0	0	12	1.000	1	17	.941	17	0	0	0	0.0	0	0.0	.123	1-3
11/12/2022	Penn St.	4	0	0	2	.000	1	11	.091	0	3	13	.769	2	23	.913	25	0	0	0	0.0	0	0.0	.196	1-3
11/18/2022	Michigan	4	1	0	1	1.000	7	14	.500	1	3	19	.842	1	13	.923	22	0	0	0	0.0	0	2.0	.241	3-1
11/20/2022	at Nebraska	3	0	0	0	.000	3	18	.167	1	0	12	1.000	1	30	.967	13	0	0	0	0.0	0	1.0	.016	0-3
11/23/2022	at Maryland	4	0	0	2	.000	3	25	.120	2	0	23	1.000	1	20	.950	24	0	0	0	0.0	0	2.0	.100	3-1
11/25/2022	at Penn St.	5	0	0	0	.000	6	21	.286	0	0	15	1.000	0	22	1.000	18	0	0	0	0.0	0	0.0	.109	2-3
12/02/2022	vs Tennessee	5	0	0	0	.000	8	14	.571	1	1	18	.944	2	22	.909	18	0	0	0	0.0	0	1.0	.255	3-2
12/03/2022	at Louisville	3	0	0	2	.000	5	10	.500	0	0	17	1.000	3	35	.914	19	0	0	0	0.0	0	0.0	.176	0-3
<b>Totals</b>		<b>110</b>	<b>3</b>	<b>1</b>	<b>23</b>	<b>.087</b>	<b>110</b>	<b>339</b>	<b>.324</b>	<b>23</b>	<b>34</b>	<b>477</b>	<b>.929</b>	<b>32</b>	<b>566</b>	<b>.943</b>	<b>508</b>	<b>0</b>	<b>0</b>	<b>0</b>	<b>0.0</b>	<b>0</b>	<b>26.0</b>		

**Player Averages**

Sets Played	Kills per set	Assists per set	Service aces per set	Digs per set	Blocks per set	Points per set
110	0.03	1.00	0.21	4.62	0.00	0.24





**2022-23 Purdue Women's Volleyball**  
**Individual Match-by-Match**  
**All games**

Page 7/15  
as of Dec 04, 2022

**#9 MYERS, Lourdes**

		Attack				Set			Serve				Recept					Blocking				Team			
Date	Opponent	SP	K	E	TA	PCT	A	TA	PCT	SA	SE	TA	PCT	RE	TA	PCT	DIG	BS	BA	BE	TOTAL	BHE	POINTS	HIT%	SCORE
08/27/2022	vs Loyola Chicago	1	0	0	3	.000	0	0	.000	0	0	0	.000	0	0	.000	0	0	1	0	1.0	0	0.5	.294	3-0
09/02/2022	Bradley	2	1	0	3	.333	0	0	.000	0	0	0	.000	0	0	.000	1	0	0	1	0.0	0	1.0	.293	3-0
09/03/2022	Milwaukee	3	4	1	6	.500	0	0	.000	0	0	1	1.000	0	0	.000	0	0	1	0	1.0	0	4.5	.239	3-1
09/10/2022	vs Xavier	1	0	0	0	.000	0	0	.000	0	0	0	.000	0	0	.000	1	0	0	0	0.0	0	0.0	.422	3-0
09/15/2022	Northern Ky.	1	0	2	2	-1.000	0	0	.000	0	0	0	.000	0	0	.000	0	0	0	0	0.0	0	0.0	.316	3-0
10/02/2022	Rutgers	*3	6	0	9	.667	0	0	.000	0	0	0	.000	0	0	.000	0	0	3	0	3.0	0	7.5	.388	3-0
10/14/2022	at Indiana	1	0	0	0	.000	0	0	.000	0	0	0	.000	0	0	.000	0	0	0	0	0.0	0	0.0	.192	3-2
10/19/2022	Nebraska	1	1	0	1	1.000	0	0	.000	0	0	3	1.000	0	0	.000	0	0	0	0	0.0	0	1.0	.140	0-3
10/28/2022	at Northwestern	3	3	1	7	.286	0	1	.000	0	0	0	.000	0	0	.000	0	0	1	1	1.0	0	3.5	.190	2-3
11/04/2022	at Michigan St.	2	2	2	6	.000	0	0	.000	0	0	0	.000	0	1	1.000	1	0	2	0	2.0	0	3.0	.259	3-1
11/06/2022	at Michigan	1	0	0	2	.000	0	0	.000	0	0	0	.000	0	0	.000	0	0	1	0	1.0	0	0.5	.275	3-1
11/10/2022	Ohio St.	2	1	0	1	1.000	0	0	.000	0	0	0	.000	0	1	1.000	0	0	0	0	0.0	0	1.0	.123	1-3
11/18/2022	Michigan	2	1	0	1	1.000	0	0	.000	0	0	0	.000	0	1	1.000	0	0	1	0	1.0	0	1.5	.241	3-1
11/20/2022	at Nebraska	1	0	1	1	-1.000	0	0	.000	0	0	0	.000	0	0	.000	0	0	1	0	1.0	0	0.5	.016	0-3
11/25/2022	at Penn St.	3	2	1	5	.200	0	0	.000	0	0	0	.000	0	0	.000	0	0	4	0	4.0	0	4.0	.109	2-3
12/03/2022	at Louisville	2	4	0	7	.571	0	0	.000	0	0	0	.000	0	0	.000	0	0	1	1	1.0	0	4.5	.176	0-3
Totals		29	25	8	54	.315	0	1	.000	0	0	4	1.000	0	3	1.000	3	0	16	3	16.0	0	33.0		

**Player Averages**

Sets Played	Kills per set	Assists per set	Service aces per set	Digs per set	Blocks per set	Points per set
29	0.86	0.00	0.00	0.10	0.55	1.14



**2022-23 Purdue Women's Volleyball  
Individual Match-by-Match  
All games**

Page 8/15  
as of Dec 04, 2022

**#10 HORNING, Ali**

Date	Opponent	SP	Attack				Set			Serve				Recept			Blocking					Team			
			K	E	TA	PCT	A	TA	PCT	SA	SE	TA	PCT	RE	TA	PCT	DIG	BS	BA	BE	TOTAL	BHE	POINTS	HIT%	SCORE
08/26/2022	vs Bowling Green	*3	0	0	0	.000	0	4	.000	1	1	13	.923	0	12	1.000	7	0	0	0	0.0	0	1.0	.263	3-0
08/27/2022	vs Loyola Chicago	*3	0	0	0	.000	0	1	.000	1	0	14	1.000	0	11	1.000	7	0	0	0	0.0	0	1.0	.294	3-0
08/27/2022	at Tennessee	*4	0	0	0	.000	0	0	.000	0	3	16	.813	0	10	1.000	15	0	0	0	0.0	0	0.0	.327	3-1
09/02/2022	Bradley	*3	0	0	0	.000	1	2	.500	4	1	30	.967	0	3	1.000	9	0	0	1	0.0	0	4.0	.293	3-0
09/02/2022	Utah	*5	0	0	0	.000	1	2	.500	2	0	23	1.000	1	18	.944	6	0	0	0	0.0	0	2.0	.298	3-2
09/03/2022	Milwaukee	*4	0	0	0	.000	1	5	.200	1	1	18	.944	0	27	1.000	10	0	0	0	0.0	0	1.0	.239	3-1
09/09/2022	at Louisville	*3	0	0	1	.000	0	2	.000	0	1	8	.875	1	11	.909	9	0	0	0	0.0	0	0.0	.189	0-3
09/10/2022	vs Xavier	*3	0	0	0	.000	2	3	.667	1	1	17	.941	0	13	1.000	10	0	0	0	0.0	0	1.0	.422	3-0
09/15/2022	Northern Ky.	*3	0	0	0	.000	2	3	.667	0	2	10	.800	0	6	1.000	2	0	0	0	0.0	0	0.0	.316	3-0
09/17/2022	Ball St.	*3	0	0	1	.000	0	2	.000	0	1	17	.941	0	18	1.000	9	0	0	0	0.0	0	0.0	.198	3-0
09/23/2022	Minnesota	*3	0	0	0	.000	1	2	.500	0	0	16	1.000	0	22	1.000	15	0	0	0	0.0	0	0.0	.248	3-0
09/25/2022	at Iowa	4	0	1	1	-1.000	3	12	.250	1	0	16	1.000	0	10	1.000	20	0	0	0	0.0	0	1.0	.280	3-1
09/30/2022	at Illinois	5	0	0	0	.000	4	10	.400	2	1	23	.957	2	32	.938	20	0	0	0	0.0	0	2.0	.266	3-2
10/02/2022	Rutgers	3	0	0	0	.000	3	4	.750	2	0	13	1.000	2	16	.875	12	0	0	0	0.0	0	2.0	.388	3-0
10/05/2022	Iowa	*5	0	0	1	.000	1	2	.500	2	0	23	1.000	0	25	1.000	11	0	0	0	0.0	0	2.0	.189	3-2
10/08/2022	Wisconsin	*4	0	0	0	.000	0	3	.000	0	0	14	1.000	1	17	.941	10	0	0	0	0.0	0	0.0	.129	1-3
10/14/2022	at Indiana	*5	0	1	1	-1.000	0	3	.000	1	1	23	.957	0	19	1.000	6	0	0	0	0.0	0	1.0	.192	3-2
10/16/2022	Maryland	*3	0	0	1	.000	1	6	.167	1	0	9	1.000	1	11	.909	8	0	0	0	0.0	0	1.0	.115	0-3
10/19/2022	Nebraska	*3	0	0	0	.000	0	0	.000	0	1	8	.875	1	16	.938	3	0	0	0	0.0	0	0.0	.140	0-3
10/22/2022	at Minnesota	*4	0	1	3	-.333	1	3	.333	1	0	20	1.000	1	33	.970	13	0	0	0	0.0	0	1.0	.160	1-3
10/28/2022	at Northwestern	*5	0	0	0	.000	2	4	.500	2	1	22	.955	0	11	1.000	6	0	0	0	0.0	0	2.0	.190	2-3
10/30/2022	Indiana	*4	0	0	0	.000	1	2	.500	0	1	16	.938	0	8	1.000	4	0	0	0	0.0	0	0.0	.347	3-1
11/04/2022	at Michigan St.	*4	0	1	2	-.500	0	0	.000	0	0	15	1.000	2	22	.909	4	0	0	0	0.0	0	0.0	.259	3-1
11/06/2022	at Michigan	*4	0	0	2	.000	0	1	.000	0	3	14	.786	0	15	1.000	5	0	0	0	0.0	0	0.0	.275	3-1
11/10/2022	Ohio St.	*4	0	0	0	.000	0	1	.000	0	0	8	1.000	1	34	.971	3	0	0	0	0.0	0	0.0	.123	1-3
11/12/2022	Penn St.	*4	1	0	1	1.000	0	0	.000	0	1	21	.952	0	16	1.000	8	0	0	0	0.0	0	1.0	.196	1-3
11/18/2022	Michigan	*4	0	0	0	.000	1	3	.333	1	0	12	1.000	0	22	1.000	8	0	0	0	0.0	0	1.0	.241	3-1
11/20/2022	at Nebraska	*3	0	0	0	.000	2	3	.667	0	1	6	.833	1	15	.933	11	0	0	0	0.0	0	0.0	.016	0-3
11/23/2022	at Maryland	*4	0	0	1	.000	1	3	.333	2	2	19	.895	0	20	1.000	17	0	0	0	0.0	0	2.0	.100	3-1
11/25/2022	at Penn St.	*5	1	0	1	1.000	0	1	.000	0	1	18	.944	0	25	1.000	13	0	0	0	0.0	0	1.0	.109	2-3
12/02/2022	vs Tennessee	*5	0	0	0	.000	1	4	.250	3	0	16	1.000	1	19	.947	11	0	0	0	0.0	0	3.0	.255	3-2
12/03/2022	at Louisville	*3	0	0	1	.000	0	2	.000	0	2	12	.833	0	4	1.000	11	0	0	0	0.0	0	0.0	.176	0-3
<b>Totals</b>		<b>122</b>	<b>2</b>	<b>4</b>	<b>17</b>	<b>-.118</b>	<b>29</b>	<b>93</b>	<b>.312</b>	<b>28</b>	<b>26</b>	<b>510</b>	<b>.949</b>	<b>15</b>	<b>541</b>	<b>.972</b>	<b>303</b>	<b>0</b>	<b>0</b>	<b>1</b>	<b>0.0</b>	<b>0</b>	<b>30.0</b>		

**Player Averages**

Sets Played	Kills per set	Assists per set	Service aces per set	Digs per set	Blocks per set	Points per set
122	0.02	0.24	0.23	2.48	0.00	0.25



**2022-23 Purdue Women's Volleyball**  
**Individual Match-by-Match**  
**All games**

Page 9/15  
as of Dec 04, 2022

**#11 BROWN, Emily**

Date	Opponent	SP	K	Attack			Set			Serve				Recept			DIG	Blocking				Team			
				E	TA	PCT	A	TA	PCT	SA	SE	TA	PCT	RE	TA	PCT		BS	BA	BE	TOTAL	BHE	POINTS	HIT%	SCORE
08/26/2022	vs Bowling Green	3	0	0	0	.000	0	2	.000	0	1	11	.909	0	9	1.000	7	0	0	0	0.0	0	0.0	.263	3-0
08/27/2022	vs Loyola Chicago	1	0	0	0	.000	0	0	.000	0	1	2	.500	0	0	.000	0	0	0	0	0.0	0	0.0	.294	3-0
08/27/2022	at Tennessee	4	0	0	1	.000	0	0	.000	2	0	18	1.000	0	19	1.000	7	0	0	0	0.0	1	2.0	.327	3-1
09/02/2022	Bradley	1	0	0	0	.000	0	0	.000	1	0	3	1.000	0	0	.000	0	0	0	0	0.0	0	1.0	.293	3-0
09/02/2022	Utah	5	0	0	0	.000	0	1	.000	0	2	15	.867	0	24	1.000	13	0	0	0	0.0	0	0.0	.298	3-2
09/03/2022	Milwaukee	1	0	0	0	.000	0	0	.000	0	0	1	1.000	0	0	.000	2	0	0	0	0.0	0	0.0	.239	3-1
09/09/2022	at Louisville	3	0	0	0	.000	0	3	.000	1	1	9	.889	2	23	.913	5	0	0	0	0.0	0	1.0	.189	0-3
09/10/2022	vs Xavier	1	0	0	0	.000	0	0	.000	0	0	1	1.000	0	0	.000	1	0	0	0	0.0	0	0.0	.422	3-0
09/15/2022	Northern Ky.	3	0	0	0	.000	4	6	.667	0	1	8	.875	0	13	1.000	6	0	0	0	0.0	0	0.0	.316	3-0
09/17/2022	Ball St.	2	0	0	0	.000	0	0	.000	0	0	2	1.000	0	0	.000	1	0	0	0	0.0	0	0.0	.198	3-0
09/23/2022	Minnesota	3	0	0	1	.000	1	1	1.000	0	1	15	.933	1	26	.962	5	0	0	0	0.0	0	0.0	.248	3-0
09/25/2022	at Iowa	4	0	0	0	.000	1	3	.333	0	1	17	.941	2	26	.923	10	0	0	0	0.0	0	0.0	.280	3-1
09/30/2022	at Illinois	5	0	0	0	.000	0	5	.000	2	2	19	.895	1	19	.947	4	0	0	0	0.0	0	2.0	.266	3-2
10/02/2022	Rutgers	3	0	0	0	.000	1	3	.333	1	1	21	.952	1	14	.929	9	0	0	0	0.0	0	1.0	.388	3-0
10/05/2022	Iowa	2	0	0	0	.000	2	2	1.000	1	1	6	.833	2	12	.833	2	0	0	0	0.0	0	1.0	.189	3-2
10/08/2022	Wisconsin	4	0	0	2	.000	1	4	.250	1	1	16	.938	5	32	.844	10	0	0	0	0.0	0	1.0	.129	1-3
10/16/2022	Maryland	2	0	0	0	.000	0	0	.000	0	0	5	1.000	2	15	.867	5	0	0	0	0.0	0	0.0	.115	0-3
10/19/2022	Nebraska	3	0	0	0	.000	2	4	.500	0	1	8	.875	1	8	.875	4	0	0	0	0.0	0	0.0	.140	0-3
10/22/2022	at Minnesota	4	0	0	0	.000	0	3	.000	0	1	15	.933	0	23	1.000	9	0	0	0	0.0	0	0.0	.160	1-3
10/28/2022	at Northwestern	4	0	0	0	.000	2	4	.500	3	3	18	.833	3	26	.885	5	0	0	0	0.0	0	3.0	.190	2-3
10/30/2022	Indiana	4	0	0	0	.000	0	1	.000	2	1	18	.944	1	14	.929	8	0	0	0	0.0	0	2.0	.347	3-1
11/04/2022	at Michigan St.	4	0	0	0	.000	2	4	.500	0	4	17	.765	0	19	1.000	3	0	0	0	0.0	0	0.0	.259	3-1
11/06/2022	at Michigan	4	0	0	0	.000	6	7	.857	2	2	17	.882	0	26	1.000	5	0	0	0	0.0	0	2.0	.275	3-1
11/10/2022	Ohio St.	1	0	0	0	.000	1	2	.500	0	0	2	1.000	1	7	.857	4	0	0	0	0.0	0	0.0	.123	1-3
11/12/2022	Penn St.	4	0	0	1	.000	3	3	1.000	1	3	17	.824	1	31	.968	6	0	0	0	0.0	0	1.0	.196	1-3
11/18/2022	Michigan	3	0	0	0	.000	0	0	.000	0	1	10	.900	1	13	.923	2	0	0	0	0.0	0	0.0	.241	3-1
11/20/2022	at Nebraska	3	0	0	1	.000	1	4	.250	0	1	8	.875	0	11	1.000	7	0	0	0	0.0	0	0.0	.016	0-3
11/23/2022	at Maryland	2	0	0	0	.000	0	0	.000	0	1	5	.800	0	13	1.000	0	0	0	0	0.0	0	0.0	.100	3-1
11/25/2022	at Penn St.	5	0	0	0	.000	2	8	.250	1	0	18	1.000	0	34	1.000	7	0	0	0	0.0	0	1.0	.109	2-3
12/02/2022	vs Tennessee	5	0	0	0	.000	3	7	.429	2	4	21	.810	0	32	1.000	8	0	0	0	0.0	0	2.0	.255	3-2
12/03/2022	at Louisville	3	0	0	0	.000	1	2	.500	0	1	12	.917	1	16	.938	10	0	0	0	0.0	0	0.0	.176	0-3
<b>Totals</b>		<b>96</b>	<b>0</b>	<b>0</b>	<b>6</b>	<b>.000</b>	<b>33</b>	<b>79</b>	<b>.418</b>	<b>20</b>	<b>36</b>	<b>355</b>	<b>.899</b>	<b>25</b>	<b>505</b>	<b>.950</b>	<b>165</b>	<b>0</b>	<b>0</b>	<b>0</b>	<b>0.0</b>	<b>1</b>	<b>20.0</b>		

**Player Averages**

Sets Played	Kills per set	Assists per set	Service aces per set	Digs per set	Blocks per set	Points per set
96	0.00	0.34	0.21	1.72	0.00	0.21



**2022-23 Purdue Women's Volleyball**  
**Individual Match-by-Match**  
**All games**

Page 10/15  
as of Dec 04, 2022

**#12 ELLIS, Emma**

Date	Opponent	SP	Attack				Set			Serve				Recept			Blocking					Team			
			K	E	TA	PCT	A	TA	PCT	SA	SE	TA	PCT	RE	TA	PCT	DIG	BS	BA	BE	TOTAL	BHE	POINTS	HIT%	SCORE
08/27/2022	vs Loyola Chicago	2	1	3	5	-.400	0	1	.000	0	0	0	.000	0	1	1.000	1	0	1	0	1.0	0	1.5	.294	3-0
09/02/2022	Bradley	2	2	2	4	.000	0	0	.000	0	0	0	.000	0	2	1.000	0	1	0	1	1.0	0	3.0	.293	3-0
09/02/2022	Utah	4	5	2	19	.158	0	0	.000	0	0	0	.000	0	0	.000	2	1	0	0	1.0	0	6.0	.298	3-2
09/03/2022	Milwaukee	4	6	7	22	-.045	0	0	.000	0	0	1	1.000	1	4	.750	2	0	2	0	2.0	0	7.0	.239	3-1
09/09/2022	at Louisville	3	10	4	24	.250	0	2	.000	0	0	0	.000	0	2	1.000	1	0	0	1	0.0	0	10.0	.189	0-3
09/10/2022	vs Xavier	3	5	2	17	.176	0	0	.000	0	0	0	.000	0	0	.000	2	1	0	0	1.0	0	6.0	.422	3-0
09/15/2022	Northern Ky.	3	7	4	17	.176	0	0	.000	0	0	0	.000	2	2	.000	1	0	2	0	2.0	0	8.0	.316	3-0
09/17/2022	Ball St.	3	9	3	20	.300	0	0	.000	0	0	0	.000	0	1	1.000	1	1	1	1	2.0	0	10.5	.198	3-0
09/23/2022	Minnesota	2	4	4	12	.000	0	1	.000	0	0	0	.000	0	0	.000	0	0	0	0	0.0	0	4.0	.248	3-0
09/25/2022	at Iowa	3	9	1	13	.615	0	0	.000	0	0	0	.000	0	0	.000	0	0	1	0	1.0	0	9.5	.280	3-1
09/30/2022	at Illinois	5	11	6	27	.185	0	2	.000	0	0	0	.000	0	0	.000	3	0	0	0	0.0	0	11.0	.266	3-2
10/05/2022	Iowa	5	9	7	25	.080	0	0	.000	0	0	0	.000	0	0	.000	1	0	0	0	0.0	0	9.0	.189	3-2
10/08/2022	Wisconsin	3	6	7	16	-.063	0	1	.000	0	0	0	.000	0	0	.000	5	0	1	0	1.0	0	6.5	.129	1-3
10/14/2022	at Indiana	5	14	3	30	.367	0	1	.000	0	0	0	.000	0	1	1.000	3	0	1	0	1.0	0	14.5	.192	3-2
10/16/2022	Maryland	2	0	3	7	-.429	0	0	.000	0	0	0	.000	0	0	.000	0	0	0	0	0.0	0	0.0	.115	0-3
10/19/2022	Nebraska	3	9	5	29	.138	0	0	.000	0	0	0	.000	0	0	.000	2	0	1	0	1.0	0	9.5	.140	0-3
10/22/2022	at Minnesota	4	10	4	25	.240	0	0	.000	0	0	0	.000	0	0	.000	3	0	3	0	3.0	0	11.5	.160	1-3
10/30/2022	Indiana	4	7	2	14	.357	0	0	.000	0	0	0	.000	0	2	1.000	1	0	2	0	2.0	0	8.0	.347	3-1
11/04/2022	at Michigan St.	2	3	4	9	-.111	0	1	.000	0	0	0	.000	0	0	.000	0	0	0	0	0.0	0	3.0	.259	3-1
11/06/2022	at Michigan	4	13	3	30	.333	0	0	.000	0	0	0	.000	0	0	.000	1	1	2	0	3.0	0	15.0	.275	3-1
11/10/2022	Ohio St.	4	7	7	32	.000	0	1	.000	0	0	0	.000	0	0	.000	0	0	3	0	3.0	0	8.5	.123	1-3
11/12/2022	Penn St.	4	10	7	28	.107	0	0	.000	0	0	0	.000	0	0	.000	3	1	3	0	4.0	0	12.5	.196	1-3
11/18/2022	Michigan	4	11	10	31	.032	0	0	.000	0	0	0	.000	0	0	.000	2	0	2	0	2.0	0	12.0	.241	3-1
11/20/2022	at Nebraska	3	3	5	21	-.095	0	2	.000	0	0	0	.000	0	0	.000	0	0	2	0	2.0	0	4.0	.016	0-3
11/23/2022	at Maryland	4	7	7	36	.000	0	2	.000	0	0	0	.000	0	0	.000	1	0	2	0	2.0	0	8.0	.100	3-1
11/25/2022	at Penn St.	3	7	6	21	.048	0	1	.000	0	0	0	.000	0	0	.000	1	1	1	0	2.0	0	8.5	.109	2-3
12/02/2022	vs Tennessee	2	7	3	13	.308	0	1	.000	0	0	0	.000	0	0	.000	0	0	0	0	0.0	0	7.0	.255	3-2
12/03/2022	at Louisville	3	2	4	10	-.200	0	0	.000	0	0	0	.000	0	0	.000	0	0	0	1	0.0	0	2.0	.176	0-3
<b>Totals</b>		<b>93</b>	<b>194</b>	<b>125</b>	<b>557</b>	<b>.124</b>	<b>0</b>	<b>16</b>	<b>.000</b>	<b>0</b>	<b>0</b>	<b>1</b>	<b>1.000</b>	<b>3</b>	<b>15</b>	<b>.800</b>	<b>36</b>	<b>7</b>	<b>30</b>	<b>4</b>	<b>37.0</b>	<b>0</b>	<b>216.0</b>		

**Player Averages**

Sets Played	Kills per set	Assists per set	Service aces per set	Digs per set	Blocks per set	Points per set
93	2.09	0.00	0.00	0.39	0.40	2.32





**2022-23 Purdue Women's Volleyball**  
**Individual Match-by-Match**  
**All games**

Page 11/15  
as of Dec 04, 2022

**#16 KOCH, Madeline**

			Attack				Set			Serve				Recept			Blocking					Team			
Date	Opponent	SP	K	E	TA	PCT	A	TA	PCT	SA	SE	TA	PCT	RE	TA	PCT	DIG	BS	BA	BE	TOTAL	BHE	POINTS	HIT%	SCORE
08/26/2022	vs Bowling Green	*3	3	1	12	.167	0	1	.000	0	1	1	.000	0	0	.000	0	0	6	2	6.0	0	6.0	.263	3-0
08/27/2022	vs Loyola Chicago	*3	9	2	15	.467	0	2	.000	0	0	0	.000	0	0	.000	1	1	2	0	3.0	0	11.0	.294	3-0
08/27/2022	at Tennessee	*4	12	2	30	.333	0	0	.000	0	0	0	.000	0	0	.000	0	0	3	2	3.0	0	13.5	.327	3-1
09/02/2022	Bradley	*3	3	1	6	.333	0	0	.000	0	0	0	.000	0	0	.000	1	0	4	1	4.0	0	5.0	.293	3-0
09/02/2022	Utah	*3	3	3	7	.000	0	0	.000	0	0	0	.000	0	1	1.000	0	0	0	0	0.0	0	3.0	.298	3-2
09/03/2022	Milwaukee	3	6	4	17	.118	0	0	.000	0	0	2	1.000	0	0	.000	4	1	0	1	1.0	0	7.0	.239	3-1
09/15/2022	Northern Ky.	*3	6	4	18	.111	0	0	.000	0	0	0	.000	0	0	.000	4	0	3	1	3.0	1	7.5	.316	3-0
09/17/2022	Ball St.	*3	9	2	17	.412	0	1	.000	0	0	0	.000	0	0	.000	3	1	3	0	4.0	0	11.5	.198	3-0
09/23/2022	Minnesota	*3	7	5	18	.111	1	1	1.000	0	0	0	.000	0	0	.000	2	0	3	0	3.0	0	8.5	.248	3-0
09/25/2022	at Iowa	*4	9	4	19	.263	0	3	.000	0	0	0	.000	0	0	.000	0	0	0	1	0.0	0	9.0	.280	3-1
09/30/2022	at Illinois	*5	9	5	22	.182	0	1	.000	0	0	0	.000	0	0	.000	1	0	0	1	0.0	0	9.0	.266	3-2
10/02/2022	Rutgers	*3	2	2	8	.000	0	0	.000	0	0	0	.000	0	0	.000	0	0	2	0	2.0	0	3.0	.388	3-0
10/05/2022	Iowa	*5	15	3	28	.429	0	0	.000	0	0	0	.000	0	0	.000	1	1	5	1	6.0	0	18.5	.189	3-2
10/08/2022	Wisconsin	*4	8	3	21	.238	0	2	.000	0	0	0	.000	0	0	.000	1	0	1	0	1.0	0	8.5	.129	1-3
10/14/2022	at Indiana	*3	6	7	18	-.056	0	1	.000	0	0	0	.000	0	0	.000	1	0	4	0	4.0	0	8.0	.192	3-2
10/16/2022	Maryland	*3	4	4	14	.000	0	1	.000	0	0	0	.000	0	0	.000	0	0	3	1	3.0	1	5.5	.115	0-3
10/19/2022	Nebraska	*3	8	3	17	.294	0	0	.000	0	0	0	.000	0	1	1.000	0	0	2	0	2.0	0	9.0	.140	0-3
10/22/2022	at Minnesota	*4	12	7	27	.185	1	1	1.000	0	0	0	.000	0	0	.000	1	0	1	0	1.0	0	12.5	.160	1-3
10/28/2022	at Northwestern	*5	5	6	22	-.045	0	3	.000	0	0	0	.000	0	0	.000	2	0	5	2	5.0	0	7.5	.190	2-3
10/30/2022	Indiana	*1	0	2	3	-.667	0	0	.000	0	0	0	.000	0	0	.000	0	0	0	0	0.0	0	0.0	.347	3-1
11/04/2022	at Michigan St.	3	7	3	15	.267	0	1	.000	0	0	0	.000	0	0	.000	2	0	1	0	1.0	0	7.5	.259	3-1
11/10/2022	Ohio St.	3	3	3	10	.000	0	0	.000	0	0	0	.000	0	2	1.000	1	0	1	1	1.0	0	3.5	.123	1-3
11/12/2022	Penn St.	2	4	1	9	.333	0	1	.000	0	0	0	.000	0	0	.000	0	0	2	1	2.0	0	5.0	.196	1-3
11/18/2022	Michigan	1	1	1	5	.000	0	0	.000	0	0	0	.000	0	0	.000	1	0	0	0	0.0	0	1.0	.241	3-1
11/20/2022	at Nebraska	2	2	3	9	-.111	0	1	.000	0	0	0	.000	0	1	1.000	1	0	0	0	0.0	0	2.0	.016	0-3
11/23/2022	at Maryland	2	5	2	16	.188	0	0	.000	0	0	0	.000	0	0	.000	3	0	0	0	0.0	0	5.0	.100	3-1
11/25/2022	at Penn St.	*3	9	7	25	.080	0	0	.000	0	0	0	.000	0	0	.000	1	2	1	0	3.0	0	11.5	.109	2-3
12/02/2022	vs Tennessee	*5	10	4	27	.222	0	0	.000	0	0	0	.000	0	0	.000	2	0	3	1	3.0	0	11.5	.255	3-2
12/03/2022	at Louisville	*3	11	3	25	.320	0	1	.000	0	0	0	.000	0	1	1.000	2	0	1	0	1.0	0	11.5	.176	0-3
Totals		92	188	97	480	.190	2	21	.095	0	1	3	.667	0	6	1.000	35	6	56	16	62.0	2	222.0		

**Player Averages**

Sets Played	Kills per set	Assists per set	Service aces per set	Digs per set	Blocks per set	Points per set
92	2.04	0.02	0.00	0.38	0.67	2.41



**2022-23 Purdue Women's Volleyball**  
**Individual Match-by-Match**  
**All games**

Page 12/15  
as of Dec 04, 2022

**#17 HUDSON, Eva**

Date	Opponent	SP	Attack				Set			Serve				Recept			Blocking					Team			
			K	E	TA	PCT	A	TA	PCT	SA	SE	TA	PCT	RE	TA	PCT	DIG	BS	BA	BE	TOTAL	BHE	POINTS	HIT%	SCORE
08/26/2022	vs Bowling Green	*3	18	2	36	.444	0	4	.000	1	1	9	.889	0	7	1.000	5	0	1	0	1.0	0	19.5	.263	3-0
08/27/2022	vs Loyola Chicago	*3	12	3	28	.321	1	1	1.000	1	0	10	1.000	0	9	1.000	6	0	1	0	1.0	0	13.5	.294	3-0
08/27/2022	at Tennessee	*4	17	5	44	.273	2	3	.667	1	0	21	1.000	2	17	.882	6	0	0	0	0.0	0	18.0	.327	3-1
09/02/2022	Bradley	*3	10	3	30	.233	0	1	.000	1	0	7	1.000	0	5	1.000	2	0	3	0	3.0	0	12.5	.293	3-0
09/02/2022	Utah	*5	18	5	54	.241	0	2	.000	1	1	18	.944	1	17	.941	6	0	5	0	5.0	0	21.5	.298	3-2
09/03/2022	Milwaukee	*4	21	4	43	.395	1	4	.250	2	1	17	.941	0	7	1.000	4	0	2	1	2.0	0	24.0	.239	3-1
09/09/2022	at Louisville	*3	17	6	49	.224	1	1	1.000	1	1	14	.929	0	12	1.000	8	0	0	0	0.0	0	18.0	.189	0-3
09/10/2022	vs Xavier	*3	21	2	40	.475	0	0	.000	0	1	7	.857	0	13	1.000	7	0	1	0	1.0	0	21.5	.422	3-0
09/15/2022	Northern Ky.	*3	15	1	28	.500	0	2	.000	2	1	16	.938	2	10	.800	8	0	3	1	3.0	0	18.5	.316	3-0
09/17/2022	Ball St.	*3	16	7	41	.220	0	0	.000	2	1	16	.938	0	8	1.000	9	1	3	0	4.0	0	20.5	.198	3-0
09/23/2022	Minnesota	*3	21	5	44	.364	0	1	.000	0	1	7	.857	0	12	1.000	7	0	2	0	2.0	0	22.0	.248	3-0
09/25/2022	at Iowa	*4	19	6	42	.310	0	4	.000	1	0	20	1.000	0	12	1.000	7	1	4	0	5.0	0	23.0	.280	3-1
09/30/2022	at Illinois	*5	24	5	50	.380	0	2	.000	0	1	18	.944	2	28	.929	17	1	1	0	2.0	0	25.5	.266	3-2
10/02/2022	Rutgers	*3	19	4	32	.469	0	0	.000	0	1	10	.900	0	3	1.000	5	0	1	0	1.0	0	19.5	.388	3-0
10/05/2022	Iowa	*5	19	9	52	.192	0	2	.000	1	1	16	.938	3	17	.824	10	0	0	0	0.0	0	20.0	.189	3-2
10/08/2022	Wisconsin	*4	13	8	53	.094	0	2	.000	1	1	17	.941	0	14	1.000	10	0	1	1	1.0	0	14.5	.129	1-3
10/14/2022	at Indiana	*5	18	8	56	.179	0	3	.000	2	0	16	1.000	1	11	.909	12	0	0	0	0.0	0	20.0	.192	3-2
10/16/2022	Maryland	*3	11	8	43	.070	2	3	.667	1	0	11	1.000	0	5	1.000	5	0	0	0	0.0	0	12.0	.115	0-3
10/19/2022	Nebraska	*3	7	10	35	-.086	0	0	.000	0	1	9	.889	0	6	1.000	6	0	2	0	2.0	0	8.0	.140	0-3
10/22/2022	at Minnesota	*4	21	6	66	.227	0	5	.000	1	0	18	1.000	0	19	1.000	8	0	0	0	0.0	0	22.0	.160	1-3
10/28/2022	at Northwestern	*5	19	6	58	.224	0	2	.000	0	0	13	1.000	1	32	.969	6	0	5	0	5.0	0	21.5	.190	2-3
10/30/2022	Indiana	*4	15	2	30	.433	0	0	.000	1	0	16	1.000	2	11	.818	5	1	2	0	3.0	0	18.0	.347	3-1
11/04/2022	at Michigan St.	*4	12	4	36	.222	0	1	.000	4	0	20	1.000	3	17	.824	8	0	2	2	2.0	0	17.0	.259	3-1
11/06/2022	at Michigan	*4	15	8	36	.194	0	1	.000	2	0	21	1.000	0	10	1.000	7	0	1	0	1.0	0	17.5	.275	3-1
11/10/2022	Ohio St.	*4	13	6	40	.175	0	1	.000	1	0	12	1.000	0	8	1.000	8	0	1	0	1.0	0	14.5	.123	1-3
11/12/2022	Penn St.	*4	13	5	53	.151	0	0	.000	2	0	15	1.000	2	16	.875	6	1	2	0	3.0	0	17.0	.196	1-3
11/18/2022	Michigan	*4	15	1	43	.326	0	0	.000	2	0	21	1.000	2	17	.882	7	0	2	0	2.0	0	18.0	.241	3-1
11/20/2022	at Nebraska	*3	6	9	42	-.071	1	3	.333	0	1	10	.900	0	13	1.000	9	1	1	0	2.0	0	7.5	.016	0-3
11/23/2022	at Maryland	*4	18	10	68	.118	0	0	.000	2	0	16	1.000	0	15	1.000	12	0	4	0	4.0	0	22.0	.100	3-1
11/25/2022	at Penn St.	*5	17	8	60	.150	2	9	.222	0	0	13	1.000	0	19	1.000	14	1	2	0	3.0	0	19.0	.109	2-3
12/02/2022	vs Tennessee	*5	23	3	50	.400	0	3	.000	1	0	16	1.000	0	12	1.000	14	0	1	0	1.0	0	24.5	.255	3-2
12/03/2022	at Louisville	*3	12	7	38	.132	0	3	.000	0	1	8	.875	0	10	1.000	5	0	1	0	1.0	0	12.5	.176	0-3
<b>Totals</b>			<b>122</b>	<b>515</b>	<b>176</b>	<b>1420</b>	<b>.239</b>	<b>10</b>	<b>63</b>	<b>.159</b>	<b>34</b>	<b>15</b>	<b>458</b>	<b>.967</b>	<b>21</b>	<b>412</b>	<b>.949</b>	<b>249</b>	<b>7</b>	<b>54</b>	<b>5</b>	<b>61.0</b>	<b>0</b>	<b>583.0</b>	

**Player Averages**

Sets Played	Kills per set	Assists per set	Service aces per set	Digs per set	Blocks per set	Points per set
122	4.22	0.08	0.28	2.04	0.50	4.78



2022-23 Purdue Women's Volleyball  
Individual Match-by-Match  
All games

Page 13/15  
as of Dec 04, 2022

#19 YIM, Sydney

			Attack				Set			Serve				Recept				Blocking				Team			
Date	Opponent	SP	K	E	TA	PCT	A	TA	PCT	SA	SE	TA	PCT	RE	TA	PCT	DIG	BS	BA	BE	TOTAL	BHE	POINTS	HIT%	SCORE
09/02/2022	Bradley	1	0	0	0	.000	1	3	.333	0	0	0	.000	0	0	.000	2	0	0	0	0.0	0	0.0	.293	3-0
09/03/2022	Milwaukee	1	0	0	0	.000	0	0	.000	0	0	1	1.000	0	0	.000	0	0	0	0	0.0	0	0.0	.239	3-1
09/10/2022	vs Xavier	1	0	0	0	.000	0	0	.000	0	0	0	.000	0	0	.000	0	0	0	0	0.0	0	0.0	.422	3-0
10/02/2022	Rutgers	1	0	0	0	.000	1	2	.500	0	0	0	.000	0	0	.000	0	0	1	0	1.0	0	0.5	.388	3-0
Totals		4	0	0	0	.000	2	5	.400	0	0	1	1.000	0	0	.000	2	0	1	0	1.0	0	0.5		

Player Averages

Sets Played	Kills per set	Assists per set	Service aces per set	Digs per set	Blocks per set	Points per set
4	0.00	0.50	0.00	0.50	0.25	0.13



**2022-23 Purdue Women's Volleyball**  
**Individual Match-by-Match**  
**All games**

Page 14/15  
as of Dec 04, 2022

**#20 CLAYTON, Hannah**

Date	Opponent	SP	Attack				Set			Serve				Recept			DIG	Blocking				Team			
			K	E	TA	PCT	A	TA	PCT	SA	SE	TA	PCT	RE	TA	PCT		BS	BA	BE	TOTAL	BHE	POINTS	HIT%	SCORE
08/26/2022	vs Bowling Green	*3	6	2	10	.400	0	0	.000	0	0	0	.000	0	0	.000	1	0	3	0	3.0	0	7.5	.263	3-0
08/27/2022	vs Loyola Chicago	*3	5	2	9	.333	0	0	.000	0	0	0	.000	0	0	.000	0	0	3	1	3.0	0	6.5	.294	3-0
08/27/2022	at Tennessee	*4	6	1	15	.333	1	2	.500	0	0	0	.000	0	1	1.000	0	1	3	0	4.0	0	8.5	.327	3-1
09/02/2022	Bradley	*3	8	1	15	.467	0	0	.000	0	0	0	.000	0	0	.000	1	0	5	1	5.0	0	10.5	.293	3-0
09/02/2022	Utah	*5	14	1	23	.565	0	0	.000	0	0	0	.000	0	0	.000	0	0	3	0	3.0	0	15.5	.298	3-2
09/03/2022	Milwaukee	*4	6	1	16	.313	1	1	1.000	0	0	0	.000	0	0	.000	1	2	4	0	6.0	0	10.0	.239	3-1
09/09/2022	at Louisville	*3	3	5	15	-.133	0	1	.000	0	0	0	.000	1	1	.000	0	0	3	0	3.0	0	4.5	.189	0-3
09/10/2022	vs Xavier	*3	7	1	14	.429	0	1	.000	0	0	0	.000	0	1	1.000	0	1	1	0	2.0	0	8.5	.422	3-0
09/15/2022	Northern Ky.	*3	8	1	13	.538	0	0	.000	0	0	0	.000	0	0	.000	1	0	2	0	2.0	0	9.0	.316	3-0
09/17/2022	Ball St.	*3	4	1	15	.200	0	0	.000	0	0	0	.000	0	0	.000	0	0	4	0	4.0	0	6.0	.198	3-0
09/23/2022	Minnesota	*3	8	1	15	.467	0	1	.000	0	0	0	.000	0	0	.000	2	2	2	1	4.0	0	11.0	.248	3-0
09/25/2022	at Iowa	*4	8	4	17	.235	0	0	.000	0	0	0	.000	0	1	1.000	0	0	2	2	2.0	0	9.0	.280	3-1
09/30/2022	at Illinois	*5	3	1	7	.286	0	1	.000	0	0	0	.000	0	0	.000	1	1	1	0	2.0	0	4.5	.266	3-2
10/05/2022	Iowa	*5	3	4	16	-.063	0	0	.000	0	0	0	.000	0	0	.000	1	1	3	0	4.0	0	5.5	.189	3-2
10/08/2022	Wisconsin	*4	5	2	18	.167	0	2	.000	0	0	0	.000	0	0	.000	0	0	2	0	2.0	0	6.0	.129	1-3
10/14/2022	at Indiana	*5	6	2	15	.267	0	1	.000	0	0	0	.000	0	0	.000	0	0	3	0	3.0	0	7.5	.192	3-2
10/16/2022	Maryland	*3	8	2	17	.353	0	1	.000	0	0	0	.000	0	0	.000	1	0	2	1	2.0	0	9.0	.115	0-3
10/19/2022	Nebraska	*3	5	0	10	.500	1	1	1.000	0	0	0	.000	0	0	.000	0	0	3	1	3.0	0	6.5	.140	0-3
10/22/2022	at Minnesota	*4	4	3	21	.048	0	1	.000	0	0	0	.000	0	0	.000	0	3	6	0	9.0	0	10.0	.160	1-3
10/28/2022	at Northwestern	*4	5	3	14	.143	0	1	.000	0	0	0	.000	0	0	.000	0	1	4	0	5.0	0	8.0	.190	2-3
10/30/2022	Indiana	*4	3	1	11	.182	0	0	.000	0	0	0	.000	0	0	.000	0	1	5	0	6.0	0	6.5	.347	3-1
11/04/2022	at Michigan St.	*4	1	1	8	.000	0	0	.000	0	0	0	.000	0	0	.000	0	0	2	0	2.0	0	2.0	.259	3-1
11/06/2022	at Michigan	*4	3	2	8	.125	0	0	.000	0	0	0	.000	0	0	.000	0	0	2	0	2.0	0	4.0	.275	3-1
11/10/2022	Ohio St.	*3	3	1	8	.250	0	0	.000	0	0	0	.000	0	0	.000	0	0	3	0	3.0	0	4.5	.123	1-3
11/12/2022	Penn St.	*4	7	2	18	.278	0	1	.000	0	0	0	.000	0	0	.000	0	0	3	0	3.0	0	8.5	.196	1-3
11/18/2022	Michigan	*3	5	2	13	.231	0	0	.000	0	0	0	.000	0	0	.000	0	0	3	0	3.0	0	6.5	.241	3-1
11/20/2022	at Nebraska	*3	2	1	10	.100	0	0	.000	0	0	0	.000	0	0	.000	0	1	0	0	1.0	0	3.0	.016	0-3
11/23/2022	at Maryland	*4	8	3	14	.357	1	1	1.000	0	0	0	.000	0	0	.000	1	0	0	1	0.0	0	8.0	.100	3-1
11/25/2022	at Penn St.	*4	2	4	9	-.222	0	0	.000	0	0	0	.000	0	0	.000	0	0	3	0	3.0	0	3.5	.109	2-3
12/02/2022	vs Tennessee	*5	6	3	16	.188	0	0	.000	0	0	0	.000	0	0	.000	0	0	4	1	4.0	0	8.0	.255	3-2
12/03/2022	at Louisville	*2	1	2	3	-.333	0	0	.000	0	0	0	.000	0	0	.000	0	0	0	0	0.0	0	1.0	.176	0-3
<b>Totals</b>		<b>114</b>	<b>163</b>	<b>60</b>	<b>413</b>	<b>.249</b>	<b>4</b>	<b>16</b>	<b>.250</b>	<b>0</b>	<b>0</b>	<b>0</b>	<b>.000</b>	<b>1</b>	<b>4</b>	<b>.750</b>	<b>10</b>	<b>14</b>	<b>84</b>	<b>9</b>	<b>98.0</b>	<b>0</b>	<b>219.0</b>		

**Player Averages**

Sets Played	Kills per set	Assists per set	Service aces per set	Digs per set	Blocks per set	Points per set
114	1.43	0.04	0.00	0.09	0.86	1.92





2022-23 Purdue Women's Volleyball  
Individual Match-by-Match  
All games

Page 15/15  
as of Dec 04, 2022

#22 RASTOVSKI, Emily

			Attack				Set			Serve				Recept					Blocking				Team			
Date	Opponent	SP	K	E	TA	PCT	A	TA	PCT	SA	SE	TA	PCT	RE	TA	PCT	DIG	BS	BA	BE	TOTAL	BHE	POINTS	HIT%	SCORE	
09/02/2022	Bradley	2	2	0	3	.667	0	0	.000	0	0	0	.000	0	0	.000	0	0	0	0	0.0	0	2.0	.293	3-0	
09/03/2022	Milwaukee	1	0	0	1	.000	0	0	.000	0	0	0	.000	0	0	.000	0	0	0	0	0.0	0	0.0	.239	3-1	
09/10/2022	vs Xavier	*2	4	1	8	.375	0	0	.000	0	0	0	.000	0	0	.000	0	0	1	0	1.0	0	4.5	.422	3-0	
09/15/2022	Northern Ky.	1	2	0	3	.667	0	0	.000	0	0	0	.000	0	0	.000	0	0	0	0	0.0	0	2.0	.316	3-0	
10/02/2022	Rutgers	1	0	0	1	.000	0	0	.000	0	0	0	.000	0	0	.000	0	0	0	0	0.0	0	0.0	.388	3-0	
10/14/2022	at Indiana	1	0	0	1	.000	0	0	.000	0	0	0	.000	0	0	.000	0	0	0	0	0.0	0	0.0	.192	3-2	
11/20/2022	at Nebraska	1	0	2	2	-1.000	0	0	.000	0	0	0	.000	0	0	.000	0	0	0	0	0.0	0	0.0	.016	0-3	
11/25/2022	at Penn St.	1	0	1	1	-1.000	0	0	.000	0	0	0	.000	0	0	.000	0	0	1	0	1.0	0	0.5	.109	2-3	
Totals		10	8	4	20	.200	0	0	.000	0	0	0	.000	0	0	.000	0	0	2	0	2.0	0	9.0			

Player Averages

Sets Played	Kills per set	Assists per set	Service aces per set	Digs per set	Blocks per set	Points per set
10	0.80	0.00	0.00	0.00	0.20	0.90