



PURDUE BOILERMAKERS 2023 VOLLEYBALL

SID: Rachel Coe | coer@purdue.edu | Office: 765-496-7842 | Cell: 518-729-9960
900 John R. Wooden Drive, West Lafayette, IN 47907

2023 PURDUE VOLLEYBALL SCHEDULE

Record: 13-6 (7-3 Big Ten)

AUGUST

Purdue Reamer Club Xtra Special Premier

25	DUKE (B1G+)	W, 3-1
26	#18 CREIGHTON (BTN)	L, 0-3
27	LOYOLA CHICAGO (B1G+)	L, 2-3
<i>Kansas Invitational</i>		
31	at #23 Kansas	W, 3-2

SEPTEMBER

Kansas Invitational

1	vs. #19 Marquette	W, 3-2
<i>Stacey Clark Classic</i>		
8	SMU (B1G+)	W, 3-1
9	#19 Kentucky	W, 3-2

Boilermaker Challenge

14	#RV UCF (BTN)	W, 3-0
15	#RV USC (BTN)	L, 1-3

Conference Play

22	at Maryland* (B1G+)	W, 3-1
24	at Rutgers* (B1G+)	W, 3-0
29	#2 NEBRASKA* (BTN)	L, 2-3

OCTOBER

1	NORTHWESTERN* (B1G+)	L, 2-3
4	ILLINOIS* (FSI)	W, 3-0
7	IOWA* (B1G+)	W, 3-0
11	at Indiana* (BTN)	L, 1-3
15	at #RV Ohio State* (B1G+)	W, 3-1
18	#RV INDIANA* (B1G+)	W, 3-1
22	at #11 Penn State* (FSI)	W, 3-1
26	#RV MINNESOTA* (BTN)	7 p.m.
28	at Illinois* (BTN or B1G+)	7 p.m.

NOVEMBER

1	at #2 Wisconsin* (BTN)	7 p.m.
5	#13 PENN STATE* (B1G+)	1 p.m.
10	at #RV Minnesota* (B1G+)	TBA
12	MICHIGAN STATE* (B1G+)	1 p.m.
17	#3 WISCONSIN* (BTN)	7 p.m.
18	MARYLAND* (B1G+)	7 p.m.
24	at Michigan* (BTN or B1G+)	6:30 p.m.
25	at Michigan State* (B1G+)	TBA

All times Eastern

WEEK 10: UP NEXT

vs. Minnesota | Holloway Gymnasium | Thursday, Oct. 26 | BTN
at Illinois | Huff Hall | Saturday, Oct. 28 | 7 p.m. ET | B1G+



#16 PURDUE BOILERMAKERS

Record: 13-6 (7-3 Big Ten)
Home: 7-5
Away: 5-1
Neutral: 1-0

HC: Dave Shondell (21st year)
HC Record: 448-223 (.667)



#RV MINNESOTA GOLDEN GOPHERS

Record: 10-8 (6-4 Big Ten)
Home: 7-3
Away: 2-5
Neutral: 1-0

HC: Keegan Cook (1st season)



ILLINOIS FIGHTING ILLINI

Record: 10-10 (5-5 Big Ten)
Home: 5-3
Away: 5-4
Neutral: 0-3

HC: Chris Tamas (7th season)

SERIES HISTORY VS MINNESOTA

Overall Record: 33-57
H: 15-25 | A: 10-29 | N: 8-2
Last Time Out: 10/22/22 | L, 1-3 | Minneapolis

SERIES HISTORY VS ILLINOIS

Overall Record: 44-47
H: 23-16 | A: 16-29 | N: 4-2
Last Time Out: 10/4/23 | W, 3-0 | West Lafayette

SCHEDULE BREAKDOWN

- The Boilermakers have one of toughest schedules in the country, with all but one non-conference opponent receiving votes at some point in an AVCA/Taralex poll this year.
- Dave Shondell put together Purdue's toughest non-conference schedule in his 21 seasons.
- According to the most recent AVCA poll, Purdue has 16 matches vs. teams ranked or receiving votes this year, including eight matches vs. top-17 programs.
- The Boilermakers saw at least one 2022 AVCA final poll ranked opponent each week of non-conference play.
- The Boilermakers are currently in a four consecutive match streak against teams receiving votes or ranked in the AVCA poll (began at Ohio State, 10/15).
- Purdue is in the midst of a 10-match stretch where the Boilermakers will face eight opponents ranked or receiving votes.

PURDUE AT A GLANCE

- The Boilermakers moved up three spots in the poll to #16 following wins at #11 Penn State and vs. Indiana.
- Purdue is 5-1 over the last six matches, over half of which against teams receiving votes in the AVCA/Taralex Coaches' Poll.
- The match vs. Minnesota will mark Purdue's fourth consecutive showdown vs. a team receiving votes in the poll.
- Purdue is fourth in the Big Ten standings and rank as high as third in the Big Ten statistical rankings in hitting % (.251), assists (11.99 per set) and opponent blocks (1.85).
- Two Boilermakers rank second in the league: Maddie Schermerhorn (4.30 digs per set) and Raven Colvin (1.40 blocks per set). Meanwhile, Eva Hudson and Chloe Chicoine are among the top offensive players in the conference, ranking 5th and 6th, respectively in kills per set and 3rd and 5th in total points.

LAST WEEK AT A GLANCE

- Purdue registered a pair of 3-1 victories vs. Indiana and at #11 Penn State last week.
- The Boilermakers led all Big Ten teams with a .260 hitting %.
- Two Boilermakers received Big Ten weekly awards: Raven Colvin as Defensive Player of the Week and Chloe Chicoine as Freshman of the Week.

48 SEASONS

24 NCAA
TOURNAMENT
APPEARANCES

22 AVCA
ALL-AMERICANS

AVCA/Taraflex Top-25 Coaches Poll October 23, 2023

Rank	School	Record	Previous Rank
1	Nebraska	19-0	2
2	Wisconsin	18-1	1
3	Stanford	17-2	3
4	Louisville	18-2	5
5	Texas	14-3	6
6	Washington State	18-3	4
7	Pittsburgh	18-3	7
8	BYU	18-3	9
9	Oregon	17-4	8
10	Arkansas	18-3	10
11	Georgia Tech	17-3	13
12	Tennessee	16-3	12
13	Penn State	14-5	11
14	Kansas	14-4	14
15	Kentucky	10-7	20
16	Purdue	13-6	19
17	Creighton	17-4	15
18	Dayton	22-2	16
19	Florida	13-4	17-T
20	Baylor	12-7	21
21	Arizona State	19-3	17-T
22	Houston	11-7	22
23	Western Kentucky	20-4	25
24	Auburn	15-5	23
25	UC Santa Barbara	20-2	NR

Receiving votes: Minnesota 70; UCF 63; Marquette 31; Indiana 30; Southern California 27; Iowa State 16; Ohio State 16; James Madison 5; Texas A&M 3

Purdue In The AVCA/Taraflex Poll

Date	Rank	Date	Rank
Preseason	#16	Week 8 (10/16)	#19
Week 1 (8/28)	#25	Week 9 (10/23)	#16
Week 2 (9/4)	#20	Week 10 (10/30)	
Week 3 (9/11)	#17	Week 11 (11/6)	
Week 4 (9/18)	#19	Week 12 (11/13)	
Week 5 (9/25)	#17	Week 13 (11/20)	
Week 6 (10/2)	#19	Week 14 (11/27)	
Week 7 (10/9)	#15	Final (12/18)	

SCOUTING THE MINNESOTA GOLDEN GOPHERS

- Minnesota is 2-5 vs. top-25 opponents this season, all seven matches coming against top-15 programs and four of the team's five losses vs. top-8 programs. Its highest-ranked victory coming in five sets vs. then-#6 Oregon (9/8).
- A loaded roster includes Big Ten Defensive Player of the Year Kylie Murr, Big Ten Player of the Year Taylor Landfair and two-time All-Big Ten setter Melani Shaffmaster.
- McKenna Wucherer leads the team with a 3.30 kills per set this season, followed by Taylor Landfair's (2.77 kills per set).
- Murr is averaging 4.11 digs per set this season. The libero transfer from Ohio State edged out Purdue's Maddie Schermerhorn last season with 4.69 digs per set) after the Boilermaker led the Big Ten in digs per set for the majority of the season.
- Minnesota's defense is among the top in the league, ranking #3 during league-only matches in opponent hitting % (.167%), blocks (2.51) and opponent kills (11.44).

IN RECENT MATCHES VS. MINNESOTA

- The Boilermakers are 2-3 over the last five matches vs. Minnesota.
- The last five matches have been some of the most competitive between the two teams, with both matches in spring 2021 going to five sets, to which Purdue responded with back-to-back victories (W, 3-1 on 11/4/21 at Minneapolis and W, 3-0 on 9/23/22 in West Lafayette).
- The last time the two teams faced-off in Holloway Gymnasium, Purdue swept a #8-ranked Minnesota team in the Big Ten season-opener.

SCOUTING THE ILLINOIS FIGHTING ILLINI

- Illinois is led by Raina Terry, a senior who is averaging a league-leading 4.80 points per set.
- The Illini are entering the week with a three-match winning streak, including back-to-back five set victories at Maryland and at Rutgers. Illinois is set to take on Indiana Wednesday night in Champaign.
- Kennedy Collins leads the team with a .385 attack % and 92 total blocks (1.16 per set).
- Running the offense is redshirt sophomore Brooke Mosher, who is averaging 8.94 assists per set and posted seven matches this season with 40 or more assists.

LAST TIME OUT VS ILLINOIS

- Purdue took down Illinois, 3-0 (25-11, 25-19, 25-16) in the team's most decisive victory of the season.
- Hudson's match vs. Illinois was her most efficient of the season, posting 16 kills with 3 errors on 33 attempts (.394%). The Boilermaker came two digs shy of a double-double. Additionally, she saw 18 receptions in the back court, making no errors in the process.
- Taylor Anderson recorded her third double-double of the season and first during Big Ten action. The freshman led the team with 11 digs, coming one shy of her career-high (set vs. #19 Kentucky).
- Illinois was held to a .117 attack %, paced by senior Raina Terry's team-leading 12 kills.

IN RECENT MATCHES VS. ILLINOIS

- The Boilermakers have won the last three straight vs. the Illini and are 4-2 over the last six matches.
- The two teams have gone to five sets in four of the last five matches.
- Purdue's sweep over Illinois on Oct. 4 was the first sweep by either team since April 2, 2021 (W, Purdue).
- Dave Shondell is 5-5 vs. Chris Tamas.

PURDUE AMONG THE BIG TEN

- The team ranks third in the league with .251 hitting % and opponent blocks (1.85), fourth in kills (13.10) and assists (11.99), fifth in points (16.58 per set) and assists (11.89) and third in opponent blocks (1.82 per set).
- Six Boilermakers rank among the league's top-10 in at least one category: Maddie Schermerhorn (#2 with 4.30 digs per set), Raven Colvin (#1 with 108 total blocks), Taylor Anderson (#4 with 9.51 assists per set), Eva Hudson (#3 in kills with 312 and #3 with 339 points) and Chloe Chicoine (#5 with 332 points and #4 with 299 kills).
- Purdue allowed just two blocks by Iowa, marking the fewest by a Big Ten opponent since 2021 (2 by Northwestern, 11/21/21).

HOME VS. AWAY MATCHES

- The Boilermakers' back row has produced more digs per set during home matches vs. away matches with nearly two more digs per set in home matches (14.33 vs. 12.71).
- Eva Hudson and Chloe Chicoine balance each other with Chicoine having the slight edge in kills per set at home (3.90 kills per set), while Hudson's numbers trend up on the road (4.38 kills per set).
- Purdue's serve has been stronger at home, with 1.25 aces per set in Holloway compared to the team's .75 on the road.

PURDUE IN THE NATIONAL RANKINGS: 101 CONSECUTIVE WEEKS

- The program has been ranked for 101 consecutive weeks (since preseason 2017), the longest active streak by any Purdue team.
- Purdue moved up three spots to #16 in the latest AVCA/Taraflex poll.
- The Boilermakers' history of excellence includes 42 of the last 55 weeks among the top-15.
- Purdue jumped up from #25 to #19 in the latest NCAA RPI.
- Purdue's highest final ranking in program history came in 2021 at #6.
- Last year, the squad was ranked as high as 5th in the nation - its second-highest ranking in program history. The record was set in 2021, ranking 4th following the take-down of #3 Ohio State inside Holloway Gymnasium, 3-2 (9/24/21).

VICTORY AT #11 PENN STATE'S REC HALL

- Purdue took down #11 Penn State, 3-1 on Sunday, marking Purdue's fifth program win in Rec Hall, four of which have come since 2018.
- The victory was Purdue's first over a top-15 program since taking down No. 8 Minnesota, 3-0 in the 2022 Big Ten season-opener (9/23/22). Meanwhile, it was the first top-15 road win since the 3-1 win at No. 8 Minnesota in 2021 (11/14/21).
- Purdue improved each set, beginning the match with 11 attack errors (-.031 attack %) and closing it out with one error and a .485 hitting % in Set 4.
- The Boilermakers allowed zero Nittany Lion service aces, marking the second time this season Purdue has gone perfect in serve-receive.

SEASON-HIGH 16 TEAM BLOCKS VS. INDIANA

- The Boilermakers posted a season-high 16 total blocks in the match and the most since the 2022 Big Ten season-finale at Penn State (17, 11/25/22).
- Raven Colvin produced the seventh errorless match of her career, including first of the season, with her seven kills on 14 attacks, in addition to a season-high 11 total blocks (1-10). Meanwhile, her .500 attack % was her most efficient performance of Big Ten play this year.
- Four Boilermakers secured season-highs or better: Lourdes Myers career-high 11 kills, Raven Colvin's season-high 11 blocks and Big Ten season-high .500 attack %, Grace Heaney's career-high six blocks and Chloe Chicoine's career-high-tying three blocks.

LEVELING UP

- As a team, Purdue's offensive production has increased, up from 2022's .217 attack % to .251% this season. This includes an increase in kills per set and assists per set.

BIG

S T A N D I N G S

As of Oct. 24

School	Big Ten Record	Overall Record	Overall Pct.
Nebraska	10-0	19-0	1.000
Wisconsin	9-1	18-1	.947
Penn State	8-2	14-5	.737
Purdue	7-3	13-6	.684
Indiana	6-4	16-7	.696
Minnesota	6-4	10-8	.556
Michigan State	5-5	13-8	.619
Illinois	5-5	10-10	.500
Maryland	4-6	14-8	.636
Northwestern	4-6	10-10	.500
Ohio State	4-6	7-12	.368
Rutgers	1-9	9-11	.450
Michigan	1-9	3-16	.158
Iowa	0-10	8-14	.364

GOING THE DISTANCE VS #2 NEBRASKA

- The Boilermakers pushed #2 Nebraska further than any team this season, taking two sets in the match.
- The match saw a total of 37 tied scores, including 21 lead changes in the longest match of the season for either team.
- Leading the team was Eva Hudson with 19 kills and Chloe Chicoine's 18.
- Middle blocker Lourdes Myers recorded a .444 hitting %, the most efficient Boilermaker of the night, and marks the eighth match this season she's hit above .400. Myers posted just one error with nine kills on 18 swings. Defensively, she had a key five block assists.

RIISING TO THE OCCASION: EVA HUDSON IN BIG TEN PLAY

- Eva Hudson has risen to the occasion in Big Ten matches, with increased production in virtually every offensive category compared to non-conference play.
- Week after week, the sophomore's production has increased during Big Ten play. Currently, she is averaging 4.46 kills per set, up from her 3.63 during non-con action.
- Since Big Ten play has started, Hudson has risen in the Big Ten standings, ranking #5 in kills per set (4.05) and #5 in points per set (4.40).
- Hit .250% or better in 10 of the last 12 matches, including four matches at .300 or better during that span.
- Hudson set the tone with 5.00 kills per set in the first week of Big Ten action.
- Recorded a season-high hitting % with a .394 mark vs. Illinois (16-3-33).

THE PLAYMAKER: SETTER TAYLOR ANDERSON

- Since making her first collegiate start, Taylor Anderson has led the Big Ten in assists per set three separate weeks.
- Anderson surpassed 100 digs and 500 career assists at Ohio State (10/15).
- She received Big Ten Setter of the Week following her first week starting a match.
- Anderson has reached 50 assists twice this season: 56 vs. SMU (9/8) and 51 at Ohio State (10/15).
- In her first career start, Taylor Anderson registered 56 assists, the most by a Boilermaker since 2019 (Hayley Bush in 5 sets vs. Indiana, 10/9/19), coupled with a career-high six total blocks (1-5) and an errorless 3 kills (.600%). Meanwhile, the last time a Boilermaker has posted as many in a four-setter was in 2017.
- Her 51 assists at Ohio State (10/15) led to not only a Purdue season-high, but the most kills by Purdue in any Big Ten match in five years (last: 74 vs. Iowa on 11/17/18).
- Moreover, in her first career start, the freshman guided the team to its most efficient match of the year: .346% vs. SMU.
- Guided Purdue to its most efficient set of the season with an errorless .611 hitting % in Set 4 at Maryland.
- Reached 35 assists or more in 10 matches this season, including six of the last eight.
- Posted an attack % of .400 or better: 5 times
- Posted 40 assists or more in a match: 6
- Posted 45 assists or more in a match: 5
- Posted 50 assists or more in a match: 2
- Double-doubles: 4 times, including career-best 12 digs and 46 assists vs. #19 Kentucky.
- The Boilermakers have hit .300 or better as a team five times this season with Anderson dishing out balls, including two matches during Big Ten play.
- Received Stacey Clark Classic All-Tournament Team recognition.

PURDUE VS. TOP-25 OPPONENTS

- The Boilermakers won matches against all three teams ranked directly above them in the latest AVCA poll: #15 Kentucky (W, 3-2), #14 Kansas (W, 3-2) and #13 Penn State (3-1). Moreover, wins vs. #14 and #13 came in true road fashion.
- This year, Purdue is 4-2 this season vs. top-25 teams and 7-3 vs. teams ranked or receiving votes.
- The Boilermakers have three matches remaining this season vs. top-25 opponents, plus two more vs. teams receiving votes.

YOUNG & TALENTED

- Purdue is one of the youngest teams in the nation, and one of only two programs among the top-25 with 11 underclassmen on the roster (joined by #21 Baylor's 13 underclassmen).
- Among the Big Ten, Purdue (11 underclassmen, 64% of the roster) is joined by Rutgers (11 underclassmen, 73%) and Illinois (10 underclassmen, 66%) for the youngest rosters.

ON THE SCENE: CHLOE CHICOINE

- Chicoine has been named Player of the Week once and Big Ten Freshman of the Week four times this year.
- Chicoine not only leads all Big Ten freshmen, but is one of five freshmen in the nation to post as many kills per set (3.88).
- Chicoine produces in the biggest matches of the season, hitting .359% vs. #2 Nebraska with 18 kills and just four errors on 39 swings. At #11 Penn State, the freshman recorded a Big Ten season-high 20 kills with her second-highest hitting % of the year with a .405 clip in the match, including an errorless six kills on nine attacks (.667%) to seal the win in Set 4.
- She made an entrance to the collegiate scene, as one of only 10 players in the nation, regardless of class, to produce as many attacks in the first weekend of competition.
- In her first weekend of play, Chicoine was second overall in the Big Ten in total points (53) and kills (48) in Week One of play, leading all freshmen, sophomores and juniors.
- Meanwhile, her 19 kills vs. Duke edged Eva Hudson's 18 kills to set Purdue's record for most kills by a Purdue freshman in the season-opener this century.
- Registered 20 kills and a .405 hitting %, both Big Ten season-bests for the freshman.
- Number of matches with 15+ kills: 12
- Number of matches with 20+ kills: 4
- Number of matches with 10+ digs: 6
- Number of errorless sets this season: 21
- The freshman reached her 300th career point at Ohio State (10/15).
- The Boilermaker earned Big Ten Freshman of the Week after leading the Big Ten, Pac-12 and ACC in points per set (5.63) in Week 7.

JUNIOR MIDDLE BLOCKER RAVEN COLVIN

- Colvin ranks #3 in the nation among all active Division I players with 1.35 career blocks per set.
- Colvin's 61 total blocks during Big Ten-play leads the league.
- The junior had one of her best offensive performances of Big Ten play this season vs. Indiana. She registered a season-high 11 blocks and an errorless seven kills on 14 swings. The .500 hitting % was a Big Ten season-high for the 2022 All-Big Ten Second Team honoree.
- Last year she set the Big Ten rally-scoring era record and Purdue's single-match record with 16 total blocks.
- Colvin has hit .400 or better three times this year: vs. Duke (.688), vs. then-#18 Creighton (.400) and vs. Indiana (.500).
- The Boilermaker was on the verge of her first career double-double at the Kansas Invitational with nine kills, nine blocks at #23 Kansas.
- Colvin set a career-high eight digs in the win vs. #19 Marquette (9/1).
- Colvin is averaging 3.11 points per set, 2.08 kills per set and 1.40 blocks per set.
- Earned Big Ten Defensive Player of the Week twice this season.

D1 National Rankings - After Week 8

Total Blocks

No. 12 Raven Colvin (108)

Blocks Per Set

No. 16 Raven Colvin (1.40)

Total Attacks

No. 31 Eva Hudson (867)

No. 79 Chloe Chicoine (790)

Attacks Per Set

No. 18 Eva Hudson (11.26)

No. 69 Chloe Chicoine (10.26)

Total Kills

No. 33 Eva Hudson (312)

No. 46 Chloe Chicoine (299)

Kills Per Set

No. 33 Eva Hudson (4.05)

No. 49 Chloe Chicoine (3.88)

Points Per Set

No. 50 Eva Hudson (4.40)

No. 62 Chloe Chicoine (4.31)

Team Hitting %

No. 45 Purdue (.251)

Team Kills Per Set

No. 68 Purdue (13.10)

Wins vs. Top-5 Opponents

By Opponent Ranking (Since 2011)

Opponent	Score	Date
vs. #2 Nebraska	3-0	11/12/2011
vs. #3 Wisconsin	3-1	10/31/2021
vs. #3 Ohio State	3-2	9/24/2021
vs. #3 Minnesota	3-2	11/21/2015
at #4 Wisconsin	3-1	11/12/2021
at #4 Penn State	3-2	10/27/2018
vs. #4 Kansas	3-1	9/16/2016
vs. #5 BYU*	3-2	12/9/2021
vs. #5 Nebraska	3-2	10/26/2019
vs. #5 Minnesota	3-1	11/10/2017
vs. #5 Illinois	3-1	11/2/2011

* NCAA Regional Semifinals

Purdue's Record When...

3-Set Matches: 4-1

4-Set Matches: 5-2

5-Set Matches: 3-1

Team attack % is .200 or better: 11-4

Team attack % is .250 or better: 5-1

Team attack % is .300 or better: 4-1

10 or more team blocks: 8-3

After dropping Set 1: 3-3

After winning Set 1: 9-1

The Last Time....

A Match Went to 5 Sets

Oct. 1, 2023 vs. Northwestern
L, 25-17, 25-15, 25-27, 11-25, 12-15

Last Victory over a Top-5 Team

Dec. 9, 2021 vs. #5 BYU
W, 3-2 (25-12, 16-25, 21-25, 25-13, 18-16)

Team Hitting % of .400 or Better

.422 | September 10, 2022 vs. Xavier | W, 3-0

60 or More Team Kills

66 | Oct. 15, 2023 at Ohio State | W, 3-1

17 or More Total Team Blocks

21 | Sept. 14, 2023 vs. UCF | W, 3-0

80 or More Team Digs

82 | Dec. 3, 2021 vs. Dayton | W, 3-2

10 or More Team Aces

10 | Aug. 27, 2023 vs. Loyola | L, 2-3

Top-25 Wins in Holloway

By Most Recent

(Since 2011)

Opponent	Score	Date
vs. #19 Kentucky	3-2	9/9/2023
vs. #8 Minnesota	3-0	9/23/2022
vs. #3 Wisconsin	3-1	10/31/2022
vs. #15 Penn State	3-2	10/17/2021
vs. #3 Ohio State	3-2	9/24/2021
vs. #22 Tennessee	3-0	9/18/2021
vs. #16 Marquette*	3-1	12/7/2019
vs. #23 Michigan	3-0	11/23/2019
vs. #5 Nebraska	3-2	10/26/2019
vs. #10 Michigan State	3-1	11/24/2017
vs. #10 Wisconsin	3-0	11/11/2017
vs. #5 Minnesota	3-1	11/10/2017
vs. #13 Michigan	3-1	10/28/2016
vs. #4 Kansas	3-1	9/16/2016
vs. #3 Minnesota	3-2	11/21/2015
vs. #18 Illinois	3-2	10/25/2015
vs. #22 Ohio State	3-2	10/18/2014
vs. #19 Michigan State	3-2	11/30/2013
vs. #6 Nebraska	3-0	11/22/2013
vs. #15 Wisconsin	3-2	11/2/2013
vs. #12 Ohio State	3-0	10/4/2013
vs. #21 Illinois	3-2	9/29/2012
vs. #21 Northern Iowa	3-0	8/24/2012

STATS TO WATCH

- Junior Ali Hornung is approaching her 500th career dig, entering the week with 497 digs.
- Maddie Schermerhorn needs 73 more digs to crack Purdue's career top-10 list.
- Eva Hudson is on track to become the fastest Boilermaker to 1,000 career kills in the modern rally-scoring era. After posting 515 kills her freshman year, tying the all-time program kills leader Debbie McDonald (1986-89) for the most by a freshman in program history, Hudson has 312 kills midway through her sophomore campaign. Holding the record for fastest player to reach 1,000 kills is McDonald, the only player to reach 1,000 kills in her first two seasons, and finished sophomore year with 1,022.

PURDUE VS. TOP-25 OPPONENTS

- This year, Purdue is 4-2 this season vs. top-25 teams and 7-3 vs. teams ranked or receiving votes.
- The Boilermakers have three matches remaining this season vs. top-25 opponents and an additional two vs. teams receiving votes.
- Number of matches remaining vs. top-3 teams: 2

THE 5TH-SET STATS

- The Boilermakers have gone to a fifth set six times this season, including the last two consecutive matches.
- Purdue is 3-3 in five-setters this season.
- There have been 10 challenges during the fifth set. Dave Shondell was the one to pull the card 50% of the time. In total (regardless of who called it), the call has gone in favor of the Boilermakers 60% of the time (between confirmed or reversed calls).

THE NON-CON WRAP-UP

- After starting the season with a 1-2 record, Purdue went on a five-match winning streak to end non-conference play 6-3.
- The future bodes well for the Boilermakers, as 83% of the offense, specifically kills per set, came at the hands of underclassmen.
- Chloe Chicoine and Eva Hudson accounted for 54% of all Purdue points.
- The Boilermakers received Freshman of the Week (twice: Chloe Chicoine), Setter of the Week (once: Taylor Anderson) and Player of the Week (once: Chloe Chicoine) during non-con action.

A FRESH START

- Eight Boilermakers started a set for the first time in their career in Week 1.
- Chloe Chicoine, Kenna Wollard, Taylor Anderson, Lourdes Myers, Grace Heaney, Lizzie Carr and Emily Rastovski all either started for the first time in their collegiate career or saw action for the first time.
- Meanwhile, Lorin Poulter wore the Old Gold & Black for the first time, transferring to Purdue from Denver for her fifth season.

BIG TEN FRESHMAN OF THE YEAR EVA HUDSON: YEAR 2 UPDATE

- The 2022 AVCA All-America Honorable Mention and Big Ten Freshman of the Year Eva Hudson produced a double-double in five of the first six matches. And seven total times this season.
- Hudson is hitting at a more efficient rate in 2023 (.257%) compared to 2022 (.239%).
- Despite her underclassman status, Hudson ranks #4 in the nation with 11.49 career attacks per set and #4 with 4.16 kills per set.
- Hudson has posted three straight matches with 19 kills (at #RV Ohio State, vs. Indiana and at #11 Penn State).
- The Boilermaker posted back-to-back 21 kill and 10 dig performances vs. #19 Marquette and vs. SMU.
- Her match vs. Illinois was her most efficient of the season, posting 16 kills with 3 errors on 33 attempts (.394%).
- On the year, the sophomore is averaging 4.05 kills per set, 1.96 digs per set and 4.40 points per set.
- Has reached double-digit kills in every match this season and 49 of 51 total matches in her career.
- Matches with 15+ kills: 14
- Matches with 20+ kills: 3
- Number of errorless sets this season: 20
- In the Boilermaker Challenge tournament, Hudson's efficiency led to just three attack errors over the two matches, while averaging 4.14 kills per set.

THE BOILERMAKER FAITHFUL

- The Block Party, Purdue's student section, sold out in 40 minutes.
- Every ticket to Holloway was sold this season, making it a complete season sell-out.
- For the past few seasons, fans wanting season tickets have had to join a wait list. Due to such a high renewal rate, only two people were able to move off the wait list to buy season tickets this year.
- In The Exponent's 2022 Readers' Choice Awards, Purdue Volleyball was voted as one of the top three Favorite Purdue Athletic Teams. Voting was as follows: 1. Purdue Football 2. Purdue Volleyball 3. Purdue Men's Basketball.

LIBERO MADDIE SCHERMERHORN

- She ranks #2 in the Big Ten after anchoring the Boilermakers as their libero in every match this season.
- The 2022 Second Team All-Big Ten honoree is averaging 4.27 digs per set with 312 digs this season.
- Schermerhorn became the 21st Boilermaker in program history to join the 1,000 dig club vs. SMU.
- Number of 15+ dig matches this season: 14
- Number of 20+ dig matches this season: 6
- Schermerhorn's season-high is 24 digs, set at Indiana (10/11). Meanwhile, her career-high is 28 (at Michigan, 11/6/22).
- Schermerhorn posted a key seven digs in the fourth set vs. #19 Marquette to push the match to five.
- The grad student totaled 12 digs in a single set vs. UCF during the team's 3-0 win.
- Averaged a Big Ten-leading 5.57 digs per set in the final week of non-conference action.
- Tallied 37 digs in under 24 hours as Purdue went 2-0 on the road against top-25 programs in Lawrence, Kansas.
- Was named to the Purdue Reamer Club Xtra Special Premier All-Tournament Team in Week 1.
- One of the best back row players in Purdue history, she ranks 3rd in program history for most digs per set in a single season, recording 4.62 digs per set in 2022.
- If the season were to end today, she would rank 5th in the Purdue record books with 4.30 digs per set this season. She will be just the third-ever Boilermaker to earn her spot not once, but twice in the season top-10 list (joining Kelli Miller (2007, 2008 & 2006) and Becky Kanitz (1987 & 1988)).

THE SPARK: GRACE HEANEY

- The freshman produced an errorless match at Ohio State with a career-high 13 kills on 24 attacks for a .542 hitting %.
- Heaney has gone errorless twice this season and as produced two errors or less nine times this year, including the last four straight matches.
- Heaney registered a .600 hitting % vs. UCF with an errorless six kills on 10 swings in the 3-0 victory.
- The Boilermaker has had some of her biggest performances in big-time matches, also seen with her previous career-high of five blocks set vs. #19 Kentucky (1 solo, 4 assisted).

SEVEN BOILERS IN THE RED, WHITE AND BLUE

- Four current Boilermakers (Eva Hudson, Chloe Chicoine and Raven Colvin, along with assistant coach Michael Bouril) and three alums (Annie Drews, Danielle Cuttino and Ashley Evans) were tapped by USA Volleyball this summer.
- While Bouril served as performance analyst for the U21 men's national team, the current players were invited to the U21 Pan American Cup National Training Team, which Chicoine and Hudson made the final roster. It was Bouril and Hudson's first time representing the U.S.
- Meanwhile, on the women's senior team, Drews, Cuttino and Evans were tapped to represent the U.S. in the Volleyball Nation's League (VNL), making 21% of the team's roster Boilermakers.
- Chicoine and Hudson helped the U.S. to a gold medal, as the team swept Mexico in the championship match in Nogales, Sonora, Mexico.
- For the second straight year, Chicoine was named MVP & First Best Outside Hitter after leading the team with 54 total points over the tournament (39 attacks, 8 blocks and 7 service aces).
- Both Chicoine and Hudson saw time in the title match, with Chicoine leading all players with 19 points (12 attacks, five blocks and two aces) and Hudson registering two service aces.
- Hudson contributed 16 points over the team's four matches (11 attacks, 2 blocks and 3 aces).

DAVE SHONDELL & COACHING STAFF

- Entering his 21st season this fall, head coach Dave Shondell is the longest tenured head coach in the Big Ten.
- Effective July 1, 2023, Michael Bouril joined the coaching staff as assistant coach, after previously serving as the team's technical coordinator & performance analyst since June of 2020.
- Over Shondell's 21 years at the helm, Purdue has recorded 82 wins over top-25 opponents. Before Shondell, Purdue owned 37. The most ranked wins in a single-season came in 2021 (9 wins vs. top-25 teams).
- In total, there are only eight active head coaches who've celebrated 20 or more years at their institution.
- Shondell was named both Big Ten Coach of the Year and Regional Coach of the Year in 2021.
- Under his direction, Shondell has guided Purdue to 14 20-win seasons.

PURDUE IN THE NCAA TOURNAMENT

- The Boilermakers have earned an NCAA tournament bid for the past eight straight years.
- Dave Shondell has led Purdue to the tournament 17 times in his 20 years of coaching and owns a 30-16 record in the Big Dance (65%).
- Purdue made back-to-back Regional Final berths in 2020 and 2021.
- Purdue NCAA Tournament Record: 35-24 (.593%)
- Number of Second Round Appearances: 22
- Number of Regional Semifinal Appearances: 15
- Regional Semifinals record under Shondell: 4-6 (advanced in 2010, 2013, 2020, 2021)
- Number of Regional Finals Appearances: 5 (1982, 2010, 2013, 2020, 2021)
- Only twice in Purdue history as Purdue not advanced to the second round (1990 and 1984).

THE ROSTER AT A GLANCE

- Eleven of the 17 members of the team are underclassmen (64%).
- Purdue picked up one transfer in graduate setter Lorin Poulter.
- Class breakdown: eight freshmen, three sophomores, three juniors, one senior, two graduate students.
- Eight members are the team are from the state of Indiana.
- States represented: Colorado, Florida, Indiana, Illinois, Massachusetts, Nebraska, Ohio, Pennsylvania, Texas.
- Tallest member of the team: 6'6" middle blocker Lizzie Carr.
- Shortest member of the Team: 5'7" defensive specialists Emily Brown and Rachel Williams.
- The Boilermakers lose seven players: defensive specialist Ava Torrance, setter Grace Balensiefer, outside hitter Maddy Chinn, outside hitter Emma Ellis, outside hitter Madeline Koch, middle blocker Hannah Clayton and setter Megan Renner.

HOLLOWAY GYMNASIUM HISTORY

- Holloway Gymnasium has sold out every match for the 2023 season, making it the program's first complete season sellout.
- Holloway was rated the best atmosphere in the toughest volleyball conference in the nation, the Big Ten.
- Purdue's win vs. #19 Kentucky marked the 8th top-25 opponent to fall inside Holloway in the last four years.
- Over the last 12 years, Purdue has taken down 13 top-25 opponents on Belin Court, including two #3 teams in 2021.
- In the last 11 years, Purdue has recorded 11 wins vs. top-5 opponents alone, eight of those wins earned at home.
- Fans have sold out every Big Ten match for four consecutive seasons (2021-present). The 2019 season was one match shy of extending the streak to five years.

ALUMS ANNIE DREWS & ASHLEY EVANS QUALIFY FOR PARIS 2024 OLYMPICS

- Purdue alums Annie Drews (2012-15) and Ashley Evans (2013-17) were members of the U.S. National Team that qualified for the Paris 2024 Olympic Games on Sunday after defeating Germany 3-1 (24-26, 25-21, 25-9, 25-16) at the FIVB Road to Paris Olympic Qualifier in Łódź, Poland. The U.S. Women finished the tournament with a 6-1 record.
- Annie Drews an integral member of Team USA's gold medal-winning effort at the Tokyo Olympics and is the first Olympian in Purdue Volleyball history. It will be Evans' first Olympic appearance.
- Drews came off the bench, entering as a substitute to start Set 2 and went on to lead all scorers with 27 points on a match-high 27 kills (.544 attack %).
- Collegiate Accolades include 2015 AVCA First Team All-America and two-time First Team All-Big Ten honors for Drews and a 2017 AVCA Honorable Mention, two Second Team Academic All-America honors (2016-17) and a Third Team Academic All-America (2015) for Evans.

All-Big Ten Team History Under HC Dave Shondell

Year	Name
2022	Eva Hudson (1st Team) Raven Colvin (2nd Team) Maddie Schermerhorn (2nd Team)
2021	Hayley Bush (1st Team) Grace Cleveland (1st Team) Caitlyn Newton (1st Team) Jena Otec (2nd Team)
2020	Hayley Bush (1st Team) Grace Cleveland (1st Team) Caitlyn Newton (1st Team) Jena Otec (1st Team)
2019	Grace Cleveland (1st Team) Blake Mohler (1st Team) Caitlyn Newton (2nd Team)
2018	Sherridan Atkinson (1st Team) Blake Mohler (1st Team)
2017	Sherridan Atkinson (1st Team) Danielle Cuttino (1st Team)
2016	Danielle Cuttino (1st Team) Faye Adelaja (HM)
2015	Annie Drews (1st Team) Faye Adelaja (HM)
2014	Val Nichol (1st Team) Annie Drews (1st Team)
2013	Val Nichol (1st Team) Carly Cramer (HM)
2012	Ariel Turner (1st Team) Carly Cramer (HM)
2011	Tiffany Fisher (1st Team) Ariel Turner (1st Team)
2010	Jaclyn Hart (1st Team)
2009	Tiffany Fisher (HM)
2008	Stephanie Lynch (HM)
2007	Stephanie Lynch (1st Team)
2006	Stephanie Lynch (1st Team)
2005	Renata Dargan (1st Team) Stephanie Lynch (HM)
2004	Kim McConaha (1st Team) Renata Dargan (HM)
2003	Renata Dargan (HM) Kim McConaha (HM)

2023 Top Individual Performances

Category	Purdue	Opponent
Points	25 (Chicoine vs. #19 Kentucky, 9/9)	36.5 (Julia Sangiacomo, Northwestern)
Kills	24 (Chicoine vs. #19 Kentucky, 9/9)	33 (Julia Sangiacomo, Northwestern)
Attacks	55 (Hudson & Chicoine vs. #19 Marquette, 9/1)	65 (last: Emily Londot, Ohio State)
Service Aces	4 (Colvin and Chicoine, last: Chicoine vs. Iowa, 10/7)	5 (Addie Barnes, Loyola)
Total Blocks	11 (Colvin vs. Indiana, 10/18)	7 (twice: last Elise Goetzinger, Kentucky)
Block Solos	1 (7 players tied)	1 (13 players tied)
Block Assists	10 (Colvin vs. Indiana, 10/18)	7 (Elise Goetzinger, Kentucky)
Digs	24 (Schermerhorn at Indiana, 10/11)	22 (last: Ramsey Gary)
Assists	56 (Anderson vs. SMU, 9/8)	57 (Camryn Turner, Kansas)
Attack % (10 attempt. min.)	.688% (Colvin, 12-1-16 vs. Duke, 8/25)	.778% (Tyrah Arial, 15-1-18, USC)

PURDUE VOLLEYBALL

2023 ROSTER

No.	Name	Ht.	Pos.	Yr.	Hometown / High School / Last School
1	Rachel Williams	5-7	DS	Fr.	West Lafayette, Ind. / West Lafayette
2	Chloe Chicoine	5-10	OH	Fr.	Lafayette, Ind. / McCutcheon
4	Kenna Wollard	6-1	OH	Fr.	Dunlap, Ill. / Illinois Valley Central
5	Taylor Anderson	6-1	S	Fr.	San Antonio, Texas / Cornerstone Christian
6	Lorrin Poulter	5-11	S	Gr.	Aurora, Colo. / Eaglecres / Denver
7	Raven Colvin	6-1	MB	Jr.	Indianapolis, Ind. / Heritage Christian
8	Maddie Schermerhorn	5-10	DS	Gr.	Ligonier, Ind. / West Noble
9	Lourdès Myers	6-3	MB	RS-Jr.	Alliance, Ohio / St. Thomas Aquinas
10	Ali Hornung	5-10	DS/OH	Jr.	New Albany, Ind. / Providence
11	Emily Brown	5-7	DS	Sr.	Lafayette, Ind. / McCutcheon / Missouri
14	Grace Heaney	6-2	OPP/RS	Fr.	Omaha, Neb. / Elkhorn North
15	Lizzie Carr	6-6	MB	RS-Fr.	West Chester, Pa. / West Chester East
17	Eva Hudson	6-1	OH	So.	Fort Wayne, Ind. / Bishop Dwenger
18	Brielle Warren	6-1	OH	RS-Fr.	College Station, Texas / Fulshear
19	Sydney Yim	6-1	S	RS-So.	Newburyport, Mass. / Newburyport
21	Julia Kane	5-11	DS	Fr.	Windermere, Fla. / Windermere Prep
22	Emily Rastovski	6-2	OH	RS-So.	Valparaiso, Ind. / Morgan Township

Head Coach: Dave Shondell, 21st season

Assistant Head Coach - Recruiting Coordinator: Kathy Jewell, 21st season

Assistant Coach: Michael Bouril, 4th season

Supervisor of Volleyball Operations: Carrie Gurnell, 3rd season

Graduate Assistant: Ben Cutrone, 2nd season

Student Assistant: Megan Renner

Pronunciation Guide

Chloe Chicoine: SHIH-coin (Starts like Chicago)

Lorrin Poulter: POLL-ter

Lourdès Myers: LORD-is

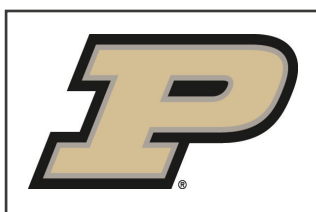
Maddie Schermerhorn: Skimmer-horn

Ali Hornung: HORN-nung

Eva Hudson: EE-va (think eve not Ava)

Brielle Warren: BREE-elle

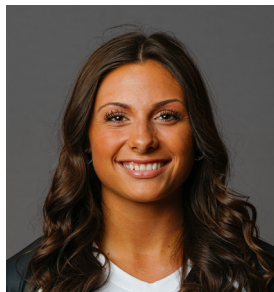
Emily Rastovski: RAZ-taw-v-skee



2023 PURDUE VOLLEYBALL ROSTER



#1 Rachel Williams
Fr. | DS | 5-7 | West Lafayette, Ind.



#2 Chloe Chicoine
Fr. | OH | 5-10 | Lafayette, Ind.



#4 Kenna Wollard
Fr. | OH | 6-1 | Dunlap, Ill.



#5 Taylor Anderson
Fr. | S | 6-1 | San Antonio, Texas



#6 Lorrin Poulter
Gr. | S | 5-11 | Aurora, Colo.
Previous School: Denver



#7 Raven Colvin
Jr. | MB | 6-1 | Indianapolis, Ind.



#8 Maddie Schermerhorn
Gr. | DS | 5-10 | Ligonier, Ind.



#9 Lourdes Myers
RS-Jr. | MB | 6-3 | Alliance, Ohio



#10 Ali Hornung
Jr. | DS/OH | 5-10 | New Albany, Ind.



#11 Emily Brown
Sr. | DS | 5-7 | Lafayette, Ind.
Previous School: Missouri



#14 Grace Heaney
Fr. | OPP/RS | 6-2 | Omaha, Neb.



#15 Lizzie Carr
RS-Fr. | MB | 6-6 | West Chester, Pa.



#17 Eva Hudson
So. | OH | 6-1 | Fort Wayne, Ind.



#18 Brielle Warren
RS-Fr. | OH | 6-1 | College Station, Texas



#19 Sydney Yim
RS-So. | S | 6-1 | Newburyport, Mass.



#21 Julia Kane
Fr. | DS | 5-11 | Windermere, Fla.



#22 Emily Rastovski
RS-So. | OH | 6-2 | Valparaiso, Ind.



**Graduate Assistant
Ben Cutrone**
2nd Season



**Student Assistant
Megan Renner**
Gr. | S | Cedar Rapids, Iowa



**Head Coach
Dave Shondell**
21st Season



**Assistant Head Coach -
Recruiting Coordinator
Kathy Jewell** | 21st Season



**Assistant Coach
Michael Bouril**
4th Season



**Director of Operations
Carrie Gurnell**
3rd Season

TEAM MATCH RECORDS

TEAM RECORDS

Kills	106	vs. Duke, 10/15/86
Total Attempts	275	at Wisconsin, 10/12/90
Hitting Percentage .560 (30-2-50)		vs. Notre Dame, 9/8/83
Assists	100	vs. Michigan, 11/22/96
Service Aces	22	at Minnesota, 10/2/82
Solo Blocks	18	vs. Northwestern, 10/15/83
Block Assists	42	vs. Indiana, 10/21/92
Total Blocks	27.5 (10-35)	at Illinois State, 10/20/82
Digs	144	at Western Michigan,

OPPONENT TEAM RECORDS

Kills	113	Illinois, 10/22/86
Total Attempts	276	at Wisconsin, 10/12/90
Hitting Percentage .527 (48-9-74)		at Illinois, 10/2/93
Assists	109	at Indiana, 11/7/98
Service Aces	20	Pittsburgh, 10/7/83
Solo Blocks	11	at Ohio State, 10/6/84
Block Assists	38	Wisconsin, 10/27/07
Total Blocks	21 (5-32) 21 (2-38)	Kansas State, 9/12/87 Wisconsin, 10/27/07
Digs	146	at Western Michigan, 11/19/85

Note: Team records date to 1977, except service aces (1979), solo blocks and block assists (1981) and assists and digs (1983).

TEAM MATCH RECORDS

Kills			Assists			Solo Blocks		
106	Duke	10/15/86	100	Michigan	11/22/96	18	Northwestern	10/15/83
105	Michigan	11/22/96	93	at Indiana	11/7/98	16	Minnesota	9/16/81
103	Illinois	10/11/96	91	vs. Houston	9/14/96	15	vs. Oregon	9/7/84
101	at #19 Texas A&M	10/12/85	90	Illinois	10/11/96		#19 Northwestern	11/21/82
99	at Indiana	11/7/98	89	at #19 Texas A&M	10/12/85		Hawaii	11/11/81
98	vs. Penn State	9/14/84		Indiana	10/20/90	14	#15 Nebraska	12/11/82
	at #17 Western Michigan	11/13/84	88	at Northwestern	11/19/83	13	Indiana	9/11/82
97	Indiana	10/20/90	87	Minnesota	11/15/96	12	Pittsburgh	10/7/83
	vs. Houston	9/14/96		at Michigan	11/5/99		Illinois State	10/2/83
96	Michigan State	11/18/89		Indiana	11/24/00		vs. #8 Arizona	9/9/83
Total Attempts			Service Aces			Block Assists		
275	at #16 Wisconsin	10/12/90	18	Bowling Green	9/2/87	42	Indiana	10/21/92
269	Duke	10/15/86		Illinois State	10/20/87	38*	Utah	9/1/07
266	vs. Houston	9/14/96	17	vs. Penn State	9/14/84	36	#14 Penn State	10/5/91
265	at #14 Western Michigan	11/19/85		Loyola	10/15/85		Michigan	11/22/91
261	at #15 Western Michigan	11/10/87		at Minnesota	10/16/87	35	at Illinois State	10/20/82
249	Illinois	10/4/00		Indiana State	11/6/01	34	LSU	9/19/87
248	vs. Northern Illinois	9/11/92	16	Northwestern	10/15/83		at Rutgers	3/19/21
246	#18 Michigan	10/2/99		Michigan	11/28/86		at #7 Ohio State	10/15/21
244	Bowling Green	9/2/87	15	Six times,		33	#23 Illinois	10/30/99
243	at #19 Texas A&M	10/12/85		last at Texas-Arlington	9/4/93		at Michigan State	11/6/99
	Michigan State	11/18/89				32	Ohio State	10/3/86
Hitting Percentage			Digs				#8 Illinois	11/25/87
.560	Notre Dame	9/8/83	144	at #15 Western Michigan	11/10/87		Georgia	9/23/90
.548	Texas A&M Corpus Christi	9/20/19	130	at #16 Wisconsin	10/12/90	Total Blocks		
.534	Michigan	9/24/83	124	at #19 Texas A&M	10/12/85	27.5	at Illinois State	10/20/82
.529	George Washington	8/25/12	119	at #15 Ohio State	11/17/90	25	Northwestern	10/15/83
.522	Kentucky	10/16/82	118	at Wisconsin	11/3/89	24*	Utah	9/1/07
.517	Indiana	9/24/16	117	Michigan State	11/18/89	23.5	Hawaii	11/11/81
.500	Eastern Kentucky	9/1/00	115	vs. Kansas State	9/12/87	23	Michigan	11/22/91
.495*	East Tennessee State	9/18/04		Iowa	9/24/88	22	#15 Nebraska	12/11/82
.490	Syracuse	9/6/97	113	Northwestern	9/28/91		at #18 Northwestern	9/27/83
.482	Michigan	9/22/84	110	at #14 Western Michigan	11/19/85		Pittsburgh	10/7/83
				vs. Northern Illinois	9/11/92		Indiana	10/21/92
						21.5	#15 Western Michigan	12/9/83

INDIVIDUAL MATCH RECORDS

PURDUE INDIVIDUAL RECORDS

Kills	38	Bev Krupa at Indiana, 11/7/98
Total Attempts	88	Joanna Lowry vs. Indiana, 11/24/00
Hitting Percentage	1.000 (13-0-13)	Debbie McDonald at North Carolina State, 9/25/87
	1.000 (10-0-10)	Kristen Arthurs vs. Ball State, 8/28/09
Assists	87	Linda Menconi vs. Houston, 9/14/96
Service Aces	9	Marianne Smith vs. Butler, 9/13/85
Solo Blocks	8	Kate Crandell vs. Pittsburgh, 10/7/83
Block Assists	16	Donna Gill vs. Indiana, 10/21/92 Amy Warner vs. Indiana, 10/21/92
Total Blocks	16	Donna Gill (3-13) vs. Michigan, 11/22/91 Donna Gill (0-16) vs. Indiana, 10/21/92 Amy Warner (0-16) vs. Indiana, 10/21/92

OPPONENT INDIVIDUAL RECORDS

Kills	41	Stacey Gordon, vs. Ohio State, 11/7/03
Total Attempts	89	Sarah Powers, at West. Michigan, 11/19/85
Hitting Percentage	.909 (10-0-11)	Ariana Filho, Minnesota, 10/2/09
Assists	99	Disa Johnson, Illinois, 10/22/86
Service Aces	11	Connie Wolter, Florida, 9/3/88
Solo Blocks	6	Sherri Rinker, at Ohio State, 11/1/86 Tiffany Meligan, Iowa, 11/19/93 Ashley Wittman, Minnesota, 10/1/10
Block Assists	13	Taylor Reineke, Wisconsin, 10/27/07 Johannah Bangert, at Illinois, 10/9/09
Total Blocks	14 (1-13)	Taylor Reineke, Wisconsin, 10/27/07
Digs	38	Jessica Granquist, Minnesota,

INDIVIDUAL MATCH RECORDS

Kills

- 38 Bev Krupa at Indiana, 11/7/98
- 34 Aneska Arosarena, Minnesota, 10/23/98
- Aneska Arosarena vs. Michigan, 10/2/99
- 33 Bev Krupa vs. Michigan, 11/14/98
- Annie Drews at Western Kentucky, 9/12/14
- 32 Marianne Smith at Texas A&M, 10/12/85
- Darcy Jones vs. Northern Illinois, 9/11/92
- Brooke White vs. Weber State, 8/31/96
- Brooke White vs. Illinois, 10/11/96
- Joanna Lowry vs. Indiana, 11/24/00
- Sherridan Atkinson at #4 Penn State, 10/27/2018)

Total Attempts

- 88 Joanna Lowry vs. Indiana, 11/24/00
- 87 Aneska Arosarena vs. Michigan, 10/2/99
- 85 Ariel Turner at Northwestern, 9/25/10
- 84 Caitlyn Newton vs. Minnesota, 2/5/2021
- 81 Ariel Turner vs. Illinois, 11/2/11

Hitting Percentage

- 1.000* Debbie McDonald (13-0-13) at North Carolina State, 9/25/87
- Kristen Arthurs (10-0-10) vs. Ball State, 8/28/09
- .900 Raven Colvin (9-0-10) vs. Purdue Fort Wayne (9/17/2021)
- .875 Tiffany Fisher (14-0-16) vs. Air Force, 9/2/11
- .818 Kierra Jones (9-0-11) vs. College of Charleston, 8/27/11
- .813 Debbie McDonald (13-0-16) at Michigan State, 11/21/87

Assists

- 87 Linda Menconi vs. Houston, 9/14/96
- 79 Taryn Catlin at Indiana, 11/7/98
- 76 Taryn Catlin at Michigan, 11/5/99
- Darcy Orin vs. Duke, 10/15/86
- 75 Taryn Catlin vs. Minnesota, 11/15/96

Service Aces

- 9 Marianne Smith vs. Butler, 9/13/85
- 8 Becky Kanitz vs. Illinois State, 10/20/87
- Debbie McDonald at Minnesota, 11/24/89
- 7 Marianne Smith at Indiana, 10/5/84
- Debbie McDonald at Wisconsin, 11/6/87
- Carey Burvis at N.C. State, 9/11/93
- Brooke White vs. Murray State, 9/18/93
- Carey Burvis at Michigan State, 11/13/93
- Katie Gibbons at Michigan State, 11/8/97
- Ariel Turner at Cincinnati, 9/8/12
- Caitlyn Newton at Michigan, 11/27/19

Digs

- 40 Kelli Miller at Indiana, 10/17/07
- 39 Blair Bashen at Baylor, 9/5/09
- 37 Becky Kanitz at Northwestern, 11/7/87
- Becky Kanitz at Western Michigan, 11/10/87
- 36 Kelli Miller at Michigan, 10/20/07

Solo Blocks

- 8 Kate Crandell vs. Pittsburgh, 10/7/83
- 7 Kate Crandell vs. Wisconsin, 10/31/82
- Kate Crandell vs. Nebraska, 12/11/82
- Marianne Smith at Illinois State, 9/10/83
- Marianne Smith vs. SW Missouri State, 9/7/84

Block Assists

- 16* Donna Gill vs. Indiana, 10/21/92
- 16* Amy Warner vs. Indiana, 10/21/92
- 13 Jan Hoosline at Illinois State, 10/20/82
- Donna Gill vs. Michigan, 11/22/91
- 12 Jane Neff at Illinois State, 10/20/82
- Stephanie Lynch at Wisconsin, 11/29/08
- Kristen Arthurs vs. Michigan, 10/23/10
- Taylor Trammell at Rutgers, 3/19/21

Total Blocks

- 16 (3-13) Donna Gill vs. Michigan, 11/22/91
- 16 (0-16) Donna Gill vs. Indiana, 10/21/92
- 16 (0-16) Amy Warner vs. Indiana, 10/21/92
- 15 (2-13) Jan Hoosline at Illinois State, 10/20/82
- 15 (3-12) Jane Neff at Illinois State, 10/20/82
- 15 (4-11) Stephanie Lynch vs. Utah, 9/1/07

* denotes Big Ten Conference record.



2023-24 Purdue Women's Volleyball Combined Team Statistics All games

Page 1/1
as of Oct 22, 2023

Game Records

Overall	Conference	Home	Away	Neutral
13 - 6	7 - 3	7 - 5	5 - 1	1 - 0

Team Box Score

##	Player	SP	Attack					Set		Serve			RE	Dig		Blocking						PTS
			K	K/S	E	TA	PCT	A	A/S	SA	SE	SA/S		DIG	DIG/S	BS	BA	TOT/S	BLK/S	BE	BHE	
2	Chicoine, Chloe	77	299	3.88	92	790	.262	11	0.14	22	31	0.29	13	146	1.90	3	16	19	0.25	2	1	332.0
4	Wollard, Kenna	28	26	0.93	19	80	.088	0	0.00	0	0	0.00	0	10	0.36	1	15	16	0.57	4	0	34.5
5	Anderson, Taylor	65	18	0.28	8	52	.192	618	9.51	12	21	0.18	2	117	1.80	4	45	49	0.75	4	5	56.5
6	Poulter, Lorrin	26	9	0.35	5	36	.111	195	7.50	2	13	0.08	3	40	1.54	1	9	10	0.38	1	0	16.5
7	Colvin, Raven	77	160	2.08	67	356	.261	7	0.09	20	29	0.26	2	47	0.61	11	97	108	1.40	11	0	239.5
8	Schermerhorn, Maddie	77	0	0.00	1	13	-.077	68	0.88	8	23	0.10	20	331	4.30	0	0	0	0.00	0	1	8.0
9	Myers, Lourdes	66	98	1.48	29	189	.365	2	0.03	0	0	0.00	0	20	0.30	5	49	54	0.82	18	1	127.5
10	Hornung, Ali	69	0	0.00	0	2	.000	9	0.13	7	11	0.10	16	162	2.35	1	0	1	0.01	0	0	8.0
11	Brown, Emily	41	0	0.00	0	0	.000	5	0.12	1	6	0.02	3	19	0.46	0	0	0	0.00	0	0	1.0
14	Heaney, Grace	53	76	1.43	35	199	.206	2	0.04	0	0	0.00	0	19	0.36	3	40	43	0.81	3	0	99.0
15	Carr, Lizzie	23	9	0.39	5	23	.174	0	0.00	0	0	0.00	1	2	0.09	0	8	8	0.35	1	0	13.0
17	Hudson, Eva	77	312	4.05	89	867	.257	6	0.08	8	11	0.10	18	151	1.96	4	30	34	0.44	3	0	339.0
18	Warren, Brielle	1	1	1.00	0	1	1.000	0	0.00	0	0	0.00	0	0	0.00	0	0	0	0.00	0	0	1.0
21	Kane, Julia	1	0	0.00	0	0	.000	0	0.00	0	0	0.00	0	0	0.00	0	0	0	0.00	0	0	0.0
22	Rastovski, Emily	6	1	0.17	2	5	-.200	0	0.00	0	0	0.00	0	0	0.00	0	2	2	0.33	0	0	2.0
PURDUE		77	1009	13.10	352	2613	.251	923	11.99	80	145	1.04	85	1064	13.82	33	311	188.5	2.45	47	8	1,277.5
Opponents		77	1019	13.23	424	2713	.219	935	12.14	85	180	1.10	80	1081	14.04	27	231	142.5	1.85	21	7	1,246.5

Team statistics

	PURDUE	OPP
ATTACK		
Kills	1009	1019
Errors	352	424
Total Attacks	2613	2713
Attack Pct	.251	.219
Kills/Set	13.10	13.23
SET		
Assists	923	935
Attempts	2513	2621
Assist Pct	.367	.357
Assists/Set	11.99	12.14
SERVE		
Aces	80	85
Errors	145	180
Attempts	1724	1631
Serve Pct	.916	.890
Aces/Set	1.04	1.10
SERVE RECEPTIONS		
Errors	85	80
Errors/Set	1.10	1.04
Attempts	1451	1579
Reception Pct	.941	.999
DEFENSE		
Digs	1064	1081
Digs/Set	13.82	14.04
BLOCKING		
Block solo	33	27
Block Assist	311	231
Total Blocks	188.5	142.5
Blocks/Set	2.45	1.85
Block Errors	47	21
Ball handling errors	8	7
ATTENDANCE		
Total	28980	14008
Dates/Avg Per Date	12/2415	6/2335
Neutral Site #/Avg	1/70	-
Current win streak	0	-
Home win streak	0	-

Team Results

Date	Opponent	Score	Score-by-set	Att.
08/25/2023	Duke	W 3-1	25-19,26-28,25-19,25-14	2415
08/26/2023	Creighton	L 0-3	26-28,21-25,20-25	2415
08/27/2023	Loyola Chicago	L 2-3	25-20,19-25,23-25,25-22,14-16	2415
08/31/2023	at Kansas	W 3-2	17-25,25-19,16-25,25-19,17-15	1838
09/01/2023	vs Marquette	W 3-2	18-25,25-18,16-25,29-27,17-15	70
09/08/2023	SMU	W 3-1	21-25,25-14,25-17,25-23	2415
09/09/2023	Kentucky	W 3-2	25-23,19-25,25-22,12-25,18-16	2415
09/14/2023	UCF	W 3-0	25-15,25-19,25-22	2415
09/15/2023	Southern California	L 1-3	28-30,25-15,23-25,23-25	2415
* 09/22/2023	at Maryland	W 3-1	25-20,25-23,17-25,25-11	1150
* 09/24/2023	at Rutgers	W 3-0	25-19,25-20,25-21	1297
* 09/29/2023	Nebraska	L 2-3	25-23,22-25,18-25,25-19,12-15	2415
* 10/01/2023	Northwestern	L 2-3	25-17,25-15,25-27,11-25,12-15	2415
* 10/04/2023	Illinois	W 3-0	25-11,25-19,25-16	2415
* 10/07/2023	Iowa	W 3-0	25-16,25-17,25-23	2415
* 10/11/2023	at Indiana	L 1-3	23-25,25-17,16-25,17-25	2725
* 10/15/2023	at Ohio St.	W 3-1	25-19,17-25,25-21,28-26	3886
* 10/18/2023	Indiana	W 3-1	25-22,25-22,21-25,25-13	2415
* 10/22/2023	at Penn St.	W 3-1	18-25,25-23,25-23,25-22	3112



2023-24 Purdue Women's Volleyball
Individual Match-by-Match
All games

Page 1/15
as of Oct 22, 2023

#2 CHICOINE, Chloe

Date	Opponent	SP	Attack				Set			Serve				Recept			Blocking					Team			
			K	E	TA	PCT	A	TA	PCT	SA	SE	TA	PCT	RE	TA	PCT	DIG	BS	BA	BE	TOTAL	BHE	POINTS	HIT%	SCORE
08/25/2023	Duke	*4	19	6	45	.289	0	3	.000	1	1	16	.938	0	12	1.000	7	0	0	0	0.0	0	20.0	.296	3-1
08/26/2023	Creighton	*3	9	6	50	.060	0	1	.000	0	1	11	.909	2	12	.833	13	1	0	0	1.0	0	10.0	.148	0-3
08/27/2023	Loyola Chicago	*5	20	4	51	.314	1	3	.333	2	2	19	.895	3	20	.850	4	1	2	1	3.0	0	24.0	.178	2-3
08/31/2023	at Kansas	*5	21	5	54	.296	1	7	.143	1	3	17	.824	0	19	1.000	12	0	2	0	2.0	0	23.0	.229	3-2
09/01/2023	vs Marquette	*5	17	9	55	.145	2	4	.500	1	3	18	.833	1	13	.923	11	0	1	0	1.0	0	18.5	.209	3-2
09/08/2023	SMU	*4	17	4	36	.361	1	5	.200	1	2	19	.895	0	18	1.000	10	0	2	0	2.0	0	19.0	.346	3-1
09/09/2023	Kentucky	*5	24	6	48	.375	0	2	.000	1	2	19	.895	2	14	.857	5	0	0	0	0.0	0	25.0	.218	3-2
09/14/2023	UCF	*3	17	4	37	.351	0	3	.000	3	2	18	.889	0	5	1.000	3	0	0	0	0.0	1	20.0	.349	3-0
09/15/2023	Southern California	*4	17	4	38	.342	0	2	.000	2	2	17	.882	1	13	.923	10	0	1	0	1.0	0	19.5	.300	1-3
09/22/2023	at Maryland	*4	12	4	39	.205	1	2	.500	0	4	14	.714	0	9	1.000	5	0	0	0	0.0	0	12.0	.238	3-1
09/24/2023	at Rutgers	*3	12	4	35	.229	0	3	.000	0	1	16	.938	0	3	1.000	8	0	1	0	1.0	0	12.5	.234	3-0
09/29/2023	Nebraska	*5	18	4	39	.359	0	1	.000	1	0	19	1.000	0	11	1.000	7	0	1	0	1.0	0	19.5	.229	2-3
10/01/2023	Northwestern	*5	9	4	37	.135	0	4	.000	2	3	16	.813	0	14	1.000	10	0	0	0	0.0	0	11.0	.215	2-3
10/04/2023	Illinois	*3	11	4	30	.233	1	2	.500	4	2	17	.882	0	2	1.000	6	0	0	0	0.0	0	15.0	.276	3-0
10/07/2023	Iowa	*3	17	2	33	.455	1	2	.500	2	0	9	1.000	2	4	.500	10	1	0	0	1.0	0	20.0	.303	3-0
10/11/2023	at Indiana	*4	17	7	50	.200	1	5	.200	1	0	15	1.000	0	10	1.000	5	0	2	0	2.0	0	19.0	.243	1-3
10/15/2023	at Ohio St.	*4	13	9	39	.103	1	4	.250	0	2	10	.800	1	24	.958	8	0	1	1	1.0	0	13.5	.304	3-1
10/18/2023	Indiana	*4	9	3	32	.188	1	1	1.000	0	0	11	1.000	1	17	.941	7	0	3	0	3.0	0	10.5	.272	3-1
10/22/2023	at Penn St.	*4	20	3	42	.405	0	2	.000	0	1	18	.944	0	16	1.000	5	0	0	0	0.0	0	20.0	.248	3-1
Totals		77	299	92	790	.262	11	56	.196	22	31	299	.896	13	236	.945	146	3	16	2	19.0	1	332.0		

Player Averages

Sets Played	Kills per set	Assists per set	Service aces per set	Digs per set	Blocks per set	Points per set
77	3.88	0.14	0.29	1.90	0.25	4.31



2023-24 Purdue Women's Volleyball
Individual Match-by-Match
All games

Page 2/15
as of Oct 22, 2023

#4 WOLLARD, Kenna

Date	Opponent	SP	Attack				Set			Serve				Recept			Blocking					Team			
			K	E	TA	PCT	A	TA	PCT	SA	SE	TA	PCT	RE	TA	PCT	DIG	BS	BA	BE	TOTAL	BHE	POINTS	HIT%	SCORE
08/25/2023	Duke	*3	2	4	10	-.200	0	0	.000	0	0	0	.000	0	0	.000	0	0	2	0	2.0	0	3.0	.296	3-1
08/31/2023	at Kansas	2	0	1	3	-.333	0	0	.000	0	0	0	.000	0	0	.000	1	0	1	0	1.0	0	0.5	.229	3-2
09/15/2023	Southern California	2	2	0	4	.500	0	0	.000	0	0	0	.000	0	0	.000	0	0	1	0	1.0	0	2.5	.300	1-3
09/22/2023	at Maryland	2	1	0	2	.500	0	0	.000	0	0	0	.000	0	0	.000	0	0	1	0	1.0	0	1.5	.238	3-1
09/24/2023	at Rutgers	3	6	1	13	.385	0	0	.000	0	0	0	.000	0	0	.000	0	1	3	0	4.0	0	8.5	.234	3-0
09/29/2023	Nebraska	5	6	5	15	.067	0	0	.000	0	0	0	.000	0	0	.000	1	0	4	0	4.0	0	8.0	.229	2-3
10/01/2023	Northwestern	1	1	3	5	-.400	0	0	.000	0	0	0	.000	0	0	.000	0	0	0	0	0.0	0	1.0	.215	2-3
10/04/2023	Illinois	*3	2	2	11	.000	0	1	.000	0	0	0	.000	0	0	.000	5	0	0	1	0.0	0	2.0	.276	3-0
10/07/2023	Iowa	2	4	1	9	.333	0	1	.000	0	0	0	.000	0	0	.000	2	0	0	0	0.0	0	4.0	.303	3-0
10/11/2023	at Indiana	4	2	2	8	.000	0	0	.000	0	0	0	.000	0	0	.000	1	0	3	2	3.0	0	3.5	.243	1-3
10/15/2023	at Ohio St.	1	0	0	0	.000	0	0	.000	0	0	0	.000	0	3	1.000	0	0	0	1	0.0	0	0.0	.304	3-1
Totals		28	26	19	80	.088	0	2	.000	0	0	0	.000	0	3	1.000	10	1	15	4	16.0	0	34.5		

Player Averages

Sets Played	Kills per set	Assists per set	Service aces per set	Digs per set	Blocks per set	Points per set
28	0.93	0.00	0.00	0.36	0.57	1.23



2023-24 Purdue Women's Volleyball
Individual Match-by-Match
All games

Page 3/15
as of Oct 22, 2023

#5 ANDERSON, Taylor

		Attack					Set			Serve				Recept					Blocking					Team			
Date	Opponent	SP	K	E	TA	PCT	A	TA	PCT	SA	SE	TA	PCT	RE	TA	PCT	DIG	BS	BA	BE	TOTAL	BHE	POINTS	HIT%	SCORE		
08/25/2023	Duke	1	0	0	0	.000	0	1	.000	1	0	2	1.000	0	0	.000	0	0	0	0	0.0	0	1.0	.296	3-1		
08/27/2023	Loyola Chicago	5	0	0	1	.000	33	83	.398	2	0	12	1.000	0	0	.000	10	0	0	0	0.0	0	2.0	.178	2-3		
08/31/2023	at Kansas	3	0	0	3	.000	25	60	.417	1	0	8	1.000	0	0	.000	0	0	2	0	2.0	0	2.0	.229	3-2		
09/01/2023	vs Marquette	2	1	0	3	.333	24	62	.387	1	1	10	.900	0	0	.000	8	0	1	0	1.0	1	2.5	.209	3-2		
09/08/2023	SMU	*4	3	0	5	.600	56	108	.519	0	2	11	.818	0	0	.000	7	0	5	0	5.0	0	5.5	.346	3-1		
09/09/2023	Kentucky	*5	2	2	4	.000	46	117	.393	0	1	15	.933	1	2	.500	12	0	4	0	4.0	0	4.0	.218	3-2		
09/14/2023	UCF	*3	1	0	2	.500	40	87	.460	1	1	12	.917	0	0	.000	8	0	6	0	6.0	1	5.0	.349	3-0		
09/15/2023	Southern California	*4	2	0	4	.500	45	110	.409	0	2	26	.923	0	2	1.000	5	1	2	0	3.0	1	4.0	.300	1-3		
09/22/2023	at Maryland	*4	1	0	3	.333	25	71	.352	1	0	22	1.000	0	0	.000	3	0	2	0	2.0	0	3.0	.238	3-1		
09/24/2023	at Rutgers	*2	0	1	2	-.500	18	40	.450	0	1	5	.800	1	1	.000	4	1	1	0	2.0	0	1.5	.234	3-0		
09/29/2023	Nebraska	*5	1	0	1	1.000	37	93	.398	0	1	9	.889	0	0	.000	6	0	3	0	3.0	0	2.5	.229	2-3		
10/01/2023	Northwestern	*5	0	2	4	-.500	37	97	.381	0	0	14	1.000	0	0	.000	6	0	4	0	4.0	0	2.0	.215	2-3		
10/04/2023	Illinois	*3	1	0	3	.333	29	70	.414	3	0	12	1.000	0	0	.000	11	0	2	0	2.0	0	5.0	.276	3-0		
10/07/2023	Iowa	*3	0	0	3	.000	35	89	.393	0	2	13	.846	0	1	1.000	6	0	2	0	2.0	0	1.0	.303	3-0		
10/11/2023	at Indiana	*4	1	0	3	.333	34	77	.442	1	3	11	.727	0	0	.000	10	0	1	0	1.0	0	2.5	.243	1-3		
10/15/2023	at Ohio St.	*4	3	1	5	.400	51	126	.405	1	0	22	1.000	0	1	1.000	8	1	4	3	5.0	1	7.0	.304	3-1		
10/18/2023	Indiana	*4	0	0	1	.000	36	103	.350	0	3	19	.842	0	0	.000	6	0	5	0	5.0	1	2.5	.272	3-1		
10/22/2023	at Penn St.	*4	2	2	5	.000	47	108	.435	0	4	14	.714	0	0	.000	7	1	1	1	2.0	0	3.5	.248	3-1		
Totals		65	18	8	52	.192	618	1502	.411	12	21	237	.911	2	7	.714	117	4	45	4	49.0	5	56.5				

Player Averages

Sets Played	Kills per set	Assists per set	Service aces per set	Digs per set	Blocks per set	Points per set
65	0.28	9.51	0.18	1.80	0.75	0.87



2023-24 Purdue Women's Volleyball
Individual Match-by-Match
All games

Page 4/15
as of Oct 22, 2023

#6 POULTER, Lorrin

			Attack				Set			Serve				Recept				Blocking				Team			
Date	Opponent	SP	K	E	TA	PCT	A	TA	PCT	SA	SE	TA	PCT	RE	TA	PCT	DIG	BS	BA	BE	TOTAL	BHE	POINTS	HIT%	SCORE
08/25/2023	Duke	*4	1	0	4	.250	42	90	.467	1	4	14	.714	2	3	.333	8	0	0	0	0.0	0	2.0	.296	3-1
08/26/2023	Creighton	*3	2	0	5	.400	25	100	.250	0	3	15	.800	0	0	.000	12	1	1	0	2.0	0	3.5	.148	0-3
08/27/2023	Loyola Chicago	*2	1	1	4	.000	13	45	.289	1	1	4	.750	0	0	.000	1	0	0	0	0.0	0	2.0	.178	2-3
08/31/2023	at Kansas	*3	2	0	6	.333	20	66	.303	0	0	10	1.000	0	0	.000	5	0	2	0	2.0	0	3.0	.229	3-2
09/01/2023	vs Marquette	*3	1	2	3	-.333	28	80	.350	0	1	12	.917	1	1	.000	5	0	1	0	1.0	0	1.5	.209	3-2
09/22/2023	at Maryland	2	2	0	3	.667	11	32	.344	0	0	0	.000	0	0	.000	2	0	1	0	1.0	0	2.5	.238	3-1
09/24/2023	at Rutgers	2	0	1	1	-1.000	22	51	.431	0	1	8	.875	0	0	.000	3	0	2	0	2.0	0	1.0	.234	3-0
09/29/2023	Nebraska	3	0	0	1	.000	16	37	.432	0	1	3	.667	0	0	.000	1	0	2	0	2.0	0	1.0	.229	2-3
10/01/2023	Northwestern	2	0	1	3	-.333	11	28	.393	0	1	6	.833	0	0	.000	2	0	0	0	0.0	0	0.0	.215	2-3
10/11/2023	at Indiana	1	0	0	6	.000	6	26	.231	0	1	2	.500	0	0	.000	1	0	0	1	0.0	0	0.0	.243	1-3
10/22/2023	at Penn St.	1	0	0	0	.000	1	3	.333	0	0	1	1.000	0	0	.000	0	0	0	0	0.0	0	0.0	.248	3-1
Totals		26	9	5	36	.111	195	558	.349	2	13	75	.827	3	4	.250	40	1	9	1	10.0	0	16.5		

Player Averages

Sets Played	Kills per set	Assists per set	Service aces per set	Digs per set	Blocks per set	Points per set
26	0.35	7.50	0.08	1.54	0.38	0.63



**2023-24 Purdue Women's Volleyball
Individual Match-by-Match
All games**

Page 5/15
as of Oct 22, 2023

#7 COLVIN, Raven

Date	Opponent	SP	Attack				Set			Serve				Recept			Blocking					Team			
			K	E	TA	PCT	A	TA	PCT	SA	SE	TA	PCT	RE	TA	PCT	DIG	BS	BA	BE	TOTAL	BHE	POINTS	HIT%	SCORE
08/25/2023	Duke	*4	12	1	16	.688	0	0	.000	2	4	13	.692	0	0	.000	3	1	5	1	6.0	0	17.5	.296	3-1
08/26/2023	Creighton	*3	8	2	15	.400	0	0	.000	0	2	10	.800	0	1	1.000	5	0	1	0	1.0	0	8.5	.148	0-3
08/27/2023	Loyola Chicago	*5	11	8	25	.120	0	0	.000	3	1	17	.941	1	1	.000	3	0	3	0	3.0	0	15.5	.178	2-3
08/31/2023	at Kansas	*5	9	5	18	.222	1	4	.250	0	0	11	1.000	0	5	1.000	2	1	8	0	9.0	0	14.0	.229	3-2
09/01/2023	vs Marquette	*5	9	5	25	.160	0	3	.000	0	2	14	.857	0	0	.000	8	1	4	0	5.0	0	12.0	.209	3-2
09/08/2023	SMU	*4	7	4	16	.188	0	2	.000	1	1	9	.889	1	2	.500	1	1	5	0	6.0	0	11.5	.346	3-1
09/09/2023	Kentucky	*5	7	6	22	.045	0	0	.000	1	3	11	.727	0	4	1.000	3	1	8	2	9.0	0	13.0	.218	3-2
09/14/2023	UCF	*3	7	3	16	.250	0	0	.000	0	1	9	.889	0	0	.000	0	1	3	0	4.0	0	9.5	.349	3-0
09/15/2023	Southern California	*4	9	3	19	.316	0	3	.000	3	2	13	.846	0	1	1.000	2	1	3	0	4.0	0	14.5	.300	1-3
09/22/2023	at Maryland	*4	7	2	13	.385	0	0	.000	4	3	15	.800	0	2	1.000	1	1	9	0	10.0	0	16.5	.238	3-1
09/24/2023	at Rutgers	*3	6	3	15	.200	1	2	.500	1	0	6	1.000	0	0	.000	2	1	5	1	6.0	0	10.5	.234	3-0
09/29/2023	Nebraska	*5	7	8	21	-.048	0	1	.000	0	1	14	.929	0	3	1.000	2	0	7	0	7.0	0	10.5	.229	2-3
10/01/2023	Northwestern	*5	12	3	28	.321	0	4	.000	2	0	14	1.000	0	0	.000	4	0	5	2	5.0	0	16.5	.215	2-3
10/04/2023	Illinois	*3	2	2	10	.000	2	3	.667	1	0	18	1.000	0	0	.000	1	1	1	1	2.0	0	4.5	.276	3-0
10/07/2023	Iowa	*3	9	3	18	.333	1	3	.333	0	2	2	.000	0	1	1.000	0	0	2	0	2.0	0	10.0	.303	3-0
10/11/2023	at Indiana	*4	13	4	24	.375	0	0	.000	0	2	2	.000	0	1	1.000	0	0	6	2	6.0	0	16.0	.243	1-3
10/15/2023	at Ohio St.	*4	10	1	25	.360	0	1	.000	1	2	9	.778	0	1	1.000	3	0	6	0	6.0	0	14.0	.304	3-1
10/18/2023	Indiana	*4	7	0	14	.500	1	1	1.000	0	2	7	.714	0	2	1.000	4	1	10	1	11.0	0	13.0	.272	3-1
10/22/2023	at Penn St.	*4	8	4	16	.250	1	1	1.000	1	1	11	.909	0	0	.000	3	0	6	1	6.0	0	12.0	.248	3-1
Totals		77	160	67	356	.261	7	28	.250	20	29	205	.859	2	24	.917	47	11	97	11	108.0	0	239.5		

Player Averages

Sets Played	Kills per set	Assists per set	Service aces per set	Digs per set	Blocks per set	Points per set
77	2.08	0.09	0.26	0.61	1.40	3.11



2023-24 Purdue Women's Volleyball
Individual Match-by-Match
All games

Page 6/15
as of Oct 22, 2023

#8 SCHERMERHORN, Maddie

Date	Opponent	SP	Attack				Set			Serve				Recept			Blocking					Team			
			K	E	TA	PCT	A	TA	PCT	SA	SE	TA	PCT	RE	TA	PCT	DIG	BS	BA	BE	TOTAL	BHE	POINTS	HIT%	SCORE
08/25/2023	Duke	4	0	0	1	.000	2	16	.125	0	1	17	.941	0	9	1.000	17	0	0	0	0.0	1	0.0	.296	3-1
08/26/2023	Creighton	3	0	1	1	-1.000	3	17	.176	0	0	10	1.000	0	13	1.000	16	0	0	0	0.0	0	0.0	.148	0-3
08/27/2023	Loyola Chicago	5	0	0	2	.000	9	19	.474	0	1	23	.957	2	22	.909	20	0	0	0	0.0	0	0.0	.178	2-3
08/31/2023	at Kansas	5	0	0	0	.000	3	11	.273	0	1	17	.941	0	23	1.000	15	0	0	0	0.0	0	0.0	.229	3-2
09/01/2023	vs Marquette	5	0	0	0	.000	5	14	.357	1	2	21	.905	2	39	.949	22	0	0	0	0.0	0	1.0	.209	3-2
09/08/2023	SMU	4	0	0	3	.000	2	8	.250	0	2	14	.857	2	24	.917	21	0	0	0	0.0	0	0.0	.346	3-1
09/09/2023	Kentucky	5	0	0	1	.000	7	17	.412	0	2	20	.900	2	31	.935	14	0	0	0	0.0	0	0.0	.218	3-2
09/14/2023	UCF	3	0	0	0	.000	2	8	.250	0	1	9	.889	2	25	.920	17	0	0	0	0.0	0	0.0	.349	3-0
09/15/2023	Southern California	4	0	0	2	.000	4	15	.267	0	1	14	.929	1	20	.950	22	0	0	0	0.0	0	0.0	.300	1-3
09/22/2023	at Maryland	4	0	0	1	.000	6	10	.600	0	1	17	.941	0	24	1.000	14	0	0	0	0.0	0	0.0	.238	3-1
09/24/2023	at Rutgers	3	0	0	1	.000	1	11	.091	0	0	11	1.000	0	20	1.000	12	0	0	0	0.0	0	0.0	.234	3-0
09/29/2023	Nebraska	5	0	0	1	.000	3	9	.333	2	1	29	.966	0	30	1.000	19	0	0	0	0.0	0	2.0	.229	2-3
10/01/2023	Northwestern	5	0	0	0	.000	1	13	.077	2	1	19	.947	1	34	.971	22	0	0	0	0.0	0	2.0	.215	2-3
10/04/2023	Illinois	3	0	0	0	.000	2	7	.286	0	2	9	.778	2	10	.800	9	0	0	0	0.0	0	0.0	.276	3-0
10/07/2023	Iowa	3	0	0	0	.000	6	12	.500	2	2	13	.846	1	13	.923	17	0	0	0	0.0	0	2.0	.303	3-0
10/11/2023	at Indiana	4	0	0	0	.000	5	21	.238	1	1	14	.929	1	23	.957	24	0	0	0	0.0	0	1.0	.243	1-3
10/15/2023	at Ohio St.	4	0	0	0	.000	3	12	.250	0	0	19	1.000	1	26	.962	16	0	0	0	0.0	0	0.0	.304	3-1
10/18/2023	Indiana	4	0	0	0	.000	2	8	.250	0	1	13	.923	3	32	.906	15	0	0	0	0.0	0	0.0	.272	3-1
10/22/2023	at Penn St.	4	0	0	0	.000	2	12	.167	0	3	17	.824	0	20	1.000	19	0	0	0	0.0	0	0.0	.248	3-1
Totals		77	0	1	13	-.077	68	240	.283	8	23	306	.925	20	438	.954	331	0	0	0	0.0	1	8.0		

Player Averages

Sets Played	Kills per set	Assists per set	Service aces per set	Digs per set	Blocks per set	Points per set
77	0.00	0.88	0.10	4.30	0.00	0.10



2023-24 Purdue Women's Volleyball
Individual Match-by-Match
All games

Page 7/15
as of Oct 22, 2023

#9 MYERS, Lourdes

			Attack				Set			Serve				Recept				Blocking				Team			
Date	Opponent	SP	K	E	TA	PCT	A	TA	PCT	SA	SE	TA	PCT	RE	TA	PCT	DIG	BS	BA	BE	TOTAL	BHE	POINTS	HIT%	SCORE
08/25/2023	Duke	*2	3	0	4	.750	0	0	.000	0	0	0	.000	0	0	.000	1	0	0	1	0.0	0	3.0	.296	3-1
08/26/2023	Creighton	*2	3	0	7	.429	0	0	.000	0	0	0	.000	0	0	.000	0	0	2	0	2.0	1	4.0	.148	0-3
08/27/2023	Loyola Chicago	1	0	0	0	.000	0	0	.000	0	0	0	.000	0	0	.000	0	0	0	0	0.0	0	0.0	.178	2-3
08/31/2023	at Kansas	*3	2	2	5	.000	1	1	1.000	0	0	3	1.000	0	0	.000	0	0	3	0	3.0	0	3.5	.229	3-2
09/01/2023	vs Marquette	*5	5	4	9	.111	0	0	.000	0	0	0	.000	0	0	.000	2	0	4	2	4.0	0	7.0	.209	3-2
09/08/2023	SMU	*4	9	2	14	.500	0	0	.000	0	0	0	.000	0	0	.000	2	0	5	1	5.0	0	11.5	.346	3-1
09/09/2023	Kentucky	*5	6	2	9	.444	0	0	.000	0	0	0	.000	0	2	1.000	1	0	3	0	3.0	0	7.5	.218	3-2
09/14/2023	UCF	*3	4	1	8	.375	0	1	.000	0	0	0	.000	0	0	.000	0	0	7	0	7.0	0	7.5	.349	3-0
09/15/2023	Southern California	*4	7	2	12	.417	0	1	.000	0	0	0	.000	0	0	.000	3	1	3	3	4.0	0	9.5	.300	1-3
09/22/2023	at Maryland	*3	2	2	6	.000	0	1	.000	0	0	0	.000	0	0	.000	0	1	1	0	2.0	0	3.5	.238	3-1
09/24/2023	at Rutgers	*3	4	1	7	.429	0	0	.000	0	0	0	.000	0	0	.000	0	0	2	0	2.0	0	5.0	.234	3-0
09/29/2023	Nebraska	*5	9	1	18	.444	0	0	.000	0	0	0	.000	0	0	.000	1	0	5	1	5.0	0	11.5	.229	2-3
10/01/2023	Northwestern	*5	6	2	13	.308	0	2	.000	0	0	0	.000	0	0	.000	2	2	2	2	4.0	0	9.0	.215	2-3
10/04/2023	Illinois	*3	6	0	11	.545	0	1	.000	0	0	0	.000	0	0	.000	2	1	1	0	2.0	0	7.5	.276	3-0
10/07/2023	Iowa	*2	4	2	12	.167	0	0	.000	0	0	0	.000	0	0	.000	1	0	1	0	1.0	0	4.5	.303	3-0
10/11/2023	at Indiana	*4	3	2	6	.167	0	1	.000	0	0	0	.000	0	2	1.000	0	0	1	4	1.0	0	3.5	.243	1-3
10/15/2023	at Ohio St.	*4	8	1	13	.538	0	1	.000	0	0	0	.000	0	1	1.000	1	0	4	2	4.0	0	10.0	.304	3-1
10/18/2023	Indiana	*4	11	3	24	.333	0	0	.000	0	0	0	.000	0	0	.000	2	0	5	0	5.0	0	13.5	.272	3-1
10/22/2023	at Penn St.	*4	6	2	11	.364	1	3	.333	0	0	0	.000	0	0	.000	2	0	0	2	0.0	0	6.0	.248	3-1
Totals		66	98	29	189	.365	2	12	.167	0	0	3	1.000	0	5	1.000	20	5	49	18	54.0	1	127.5		

Player Averages

Sets Played	Kills per set	Assists per set	Service aces per set	Digs per set	Blocks per set	Points per set
66	1.48	0.03	0.00	0.30	0.82	1.93



2023-24 Purdue Women's Volleyball
Individual Match-by-Match
All games

Page 8/15
as of Oct 22, 2023

#10 HORNING, Ali

			Attack				Set			Serve				Recept				Blocking				Team			
Date	Opponent	SP	K	E	TA	PCT	A	TA	PCT	SA	SE	TA	PCT	RE	TA	PCT	DIG	BS	BA	BE	TOTAL	BHE	POINTS	HIT%	SCORE
08/25/2023	Duke	4	0	0	0	.000	1	5	.200	0	1	19	.947	1	13	.923	14	0	0	0	0.0	0	0.0	.296	3-1
08/26/2023	Creighton	3	0	0	0	.000	2	5	.400	1	0	12	1.000	2	10	.800	7	0	0	0	0.0	0	1.0	.148	0-3
08/27/2023	Loyola Chicago	5	0	0	0	.000	0	2	.000	2	2	16	.875	3	21	.857	13	0	0	0	0.0	0	2.0	.178	2-3
08/31/2023	at Kansas	5	0	0	0	.000	0	3	.000	0	0	19	1.000	0	13	1.000	7	1	0	0	1.0	0	1.0	.229	3-2
09/01/2023	vs Marquette	4	0	0	0	.000	1	3	.333	0	0	12	1.000	0	27	1.000	2	0	0	0	0.0	0	0.0	.209	3-2
09/08/2023	SMU	*4	0	0	0	.000	0	3	.000	0	1	14	.929	1	13	.923	9	0	0	0	0.0	0	0.0	.346	3-1
09/09/2023	Kentucky	*5	0	0	0	.000	1	5	.200	0	2	13	.846	3	20	.850	15	0	0	0	0.0	0	0.0	.218	3-2
09/14/2023	UCF	*3	0	0	0	.000	1	3	.333	0	1	11	.909	0	12	1.000	11	0	0	0	0.0	0	0.0	.349	3-0
09/15/2023	Southern California	*4	0	0	0	.000	0	3	.000	1	0	15	1.000	3	14	.786	8	0	0	0	0.0	0	1.0	.300	1-3
09/22/2023	at Maryland	*4	0	0	0	.000	1	4	.250	0	0	12	1.000	0	25	1.000	9	0	0	0	0.0	0	0.0	.238	3-1
09/24/2023	at Rutgers	*3	0	0	0	.000	0	0	.000	1	0	11	1.000	1	14	.929	12	0	0	0	0.0	0	1.0	.234	3-0
09/29/2023	Nebraska	*3	0	0	0	.000	1	1	1.000	0	0	10	1.000	0	11	1.000	4	0	0	0	0.0	0	0.0	.229	2-3
10/01/2023	Northwestern	*3	0	0	1	.000	0	2	.000	0	0	5	1.000	0	6	1.000	12	0	0	0	0.0	0	0.0	.215	2-3
10/04/2023	Illinois	3	0	0	0	.000	1	2	.500	0	1	7	.857	0	7	1.000	5	0	0	0	0.0	0	0.0	.276	3-0
10/07/2023	Iowa	*3	0	0	1	.000	0	1	.000	0	0	11	1.000	0	7	1.000	9	0	0	0	0.0	0	0.0	.303	3-0
10/11/2023	at Indiana	*4	0	0	0	.000	0	1	.000	0	2	9	.778	0	14	1.000	7	0	0	0	0.0	0	0.0	.243	1-3
10/15/2023	at Ohio St.	4	0	0	0	.000	0	1	.000	1	1	15	.933	1	7	.857	5	0	0	0	0.0	0	1.0	.304	3-1
10/18/2023	Indiana	*4	0	0	0	.000	0	3	.000	1	0	17	1.000	1	8	.875	12	0	0	0	0.0	0	1.0	.272	3-1
10/22/2023	at Penn St.	*1	0	0	0	.000	0	1	.000	0	0	2	1.000	0	6	1.000	1	0	0	0	0.0	0	0.0	.248	3-1
Totals			69	0	0	2	.000	9	48	.188	7	11	230	.952	16	248	.935	162	1	0	0	1.0	0	8.0	

Player Averages

Sets Played	Kills per set	Assists per set	Service aces per set	Digs per set	Blocks per set	Points per set
69	0.00	0.13	0.10	2.35	0.01	0.12



2023-24 Purdue Women's Volleyball
Individual Match-by-Match
All games

Page 9/15
as of Oct 22, 2023

#11 BROWN, Emily

		Attack				Set			Serve				Recept				Blocking				Team				
Date	Opponent	SP	K	E	TA	PCT	A	TA	PCT	SA	SE	TA	PCT	RE	TA	PCT	DIG	BS	BA	BE	TOTAL	BHE	POINTS	HIT%	SCORE
08/25/2023	Duke	1	0	0	0	.000	1	1	1.000	0	0	2	1.000	0	0	.000	0	0	0	0	0.0	0	0.0	.296	3-1
08/26/2023	Creighton	2	0	0	0	.000	0	0	.000	0	0	0	.000	0	5	1.000	3	0	0	0	0.0	0	0.0	.148	0-3
08/27/2023	Loyola Chicago	2	0	0	0	.000	0	0	.000	0	0	1	1.000	0	0	.000	0	0	0	0	0.0	0	0.0	.178	2-3
08/31/2023	at Kansas	1	0	0	0	.000	0	0	.000	0	0	0	.000	0	1	1.000	0	0	0	0	0.0	0	0.0	.229	3-2
09/01/2023	vs Marquette	4	0	0	0	.000	1	2	.500	1	0	7	1.000	1	8	.875	2	0	0	0	0.0	0	1.0	.209	3-2
09/08/2023	SMU	2	0	0	0	.000	0	0	.000	0	1	5	.800	0	0	.000	1	0	0	0	0.0	0	0.0	.346	3-1
09/09/2023	Kentucky	3	0	0	0	.000	0	0	.000	0	0	2	1.000	0	1	1.000	1	0	0	0	0.0	0	0.0	.218	3-2
09/14/2023	UCF	1	0	0	0	.000	0	0	.000	0	0	1	1.000	0	0	.000	0	0	0	0	0.0	0	0.0	.349	3-0
09/15/2023	Southern California	1	0	0	0	.000	0	0	.000	0	0	3	1.000	0	0	.000	0	0	0	0	0.0	0	0.0	.300	1-3
09/22/2023	at Maryland	2	0	0	0	.000	0	0	.000	0	0	0	.000	0	0	.000	1	0	0	0	0.0	0	0.0	.238	3-1
09/24/2023	at Rutgers	2	0	0	0	.000	0	0	.000	0	0	4	1.000	0	0	.000	0	0	0	0	0.0	0	0.0	.234	3-0
09/29/2023	Nebraska	3	0	0	0	.000	0	1	.000	0	0	5	1.000	1	10	.900	3	0	0	0	0.0	0	0.0	.229	2-3
10/01/2023	Northwestern	4	0	0	0	.000	0	0	.000	0	1	7	.857	0	12	1.000	2	0	0	0	0.0	0	0.0	.215	2-3
10/07/2023	Iowa	3	0	0	0	.000	0	1	.000	0	1	4	.750	1	7	.857	1	0	0	0	0.0	0	0.0	.303	3-0
10/11/2023	at Indiana	3	0	0	0	.000	1	2	.500	0	0	8	1.000	0	0	.000	0	0	0	0	0.0	0	0.0	.243	1-3
10/15/2023	at Ohio St.	2	0	0	0	.000	0	1	.000	0	1	5	.800	0	0	.000	1	0	0	0	0.0	0	0.0	.304	3-1
10/18/2023	Indiana	2	0	0	0	.000	0	1	.000	0	1	7	.857	0	0	.000	0	0	0	0	0.0	0	0.0	.272	3-1
10/22/2023	at Penn St.	3	0	0	0	.000	2	3	.667	0	1	14	.929	0	26	1.000	4	0	0	0	0.0	0	0.0	.248	3-1
Totals		41	0	0	0	.000	5	12	.417	1	6	75	.920	3	70	.957	19	0	0	0	0.0	0	1.0		

Player Averages

Sets Played	Kills per set	Assists per set	Service aces per set	Digs per set	Blocks per set	Points per set
41	0.00	0.12	0.02	0.46	0.00	0.02



2023-24 Purdue Women's Volleyball
Individual Match-by-Match
All games

Page 10/15
as of Oct 22, 2023

#14 HEANEY, Grace

			Attack				Set			Serve				Recept			Blocking				Team				
Date	Opponent	SP	K	E	TA	PCT	A	TA	PCT	SA	SE	TA	PCT	RE	TA	PCT	DIG	BS	BA	BE	TOTAL	BHE	POINTS	HIT%	SCORE
08/26/2023	Creighton	*3	3	2	14	.071	0	0	.000	0	0	0	.000	0	2	1.000	2	0	4	0	4.0	0	5.0	.148	0-3
08/27/2023	Loyola Chicago	2	7	2	14	.357	0	0	.000	0	0	0	.000	0	0	.000	1	0	2	0	2.0	0	8.0	.178	2-3
08/31/2023	at Kansas	*5	6	4	20	.100	0	3	.000	0	0	0	.000	0	0	.000	2	0	3	0	3.0	0	7.5	.229	3-2
09/01/2023	vs Marquette	*5	9	3	22	.273	0	0	.000	0	0	0	.000	0	0	.000	1	0	4	1	4.0	0	11.0	.209	3-2
09/08/2023	SMU	4	7	4	14	.214	0	0	.000	0	0	0	.000	0	0	.000	2	1	1	0	2.0	0	8.5	.346	3-1
09/09/2023	Kentucky	5	6	2	15	.267	0	2	.000	0	0	0	.000	0	0	.000	1	1	4	0	5.0	0	9.0	.218	3-2
09/14/2023	UCF	3	6	0	10	.600	0	1	.000	0	0	0	.000	0	0	.000	0	0	1	0	1.0	0	6.5	.349	3-0
09/15/2023	Southern California	3	1	2	11	-.091	0	1	.000	0	0	0	.000	0	0	.000	1	0	2	0	2.0	0	2.0	.300	1-3
09/22/2023	at Maryland	3	1	3	7	-.286	0	1	.000	0	0	0	.000	0	0	.000	1	0	3	0	3.0	0	2.5	.238	3-1
10/01/2023	Northwestern	4	8	2	13	.462	1	3	.333	0	0	0	.000	0	0	.000	2	0	2	0	2.0	0	9.0	.215	2-3
10/07/2023	Iowa	1	1	1	5	.000	0	0	.000	0	0	0	.000	0	0	.000	0	0	1	0	1.0	0	1.5	.303	3-0
10/11/2023	at Indiana	3	0	1	2	-.500	0	0	.000	0	0	0	.000	0	0	.000	0	0	0	0	0.0	0	0.0	.243	1-3
10/15/2023	at Ohio St.	*4	13	0	24	.542	1	1	1.000	0	0	0	.000	0	0	.000	3	0	4	1	4.0	0	15.0	.304	3-1
10/18/2023	Indiana	4	5	3	14	.143	0	3	.000	0	0	0	.000	0	0	.000	0	0	6	1	6.0	0	8.0	.272	3-1
10/22/2023	at Penn St.	4	3	6	14	-.214	0	0	.000	0	0	0	.000	0	0	.000	3	1	3	0	4.0	0	5.5	.248	3-1
Totals		53	76	35	199	.206	2	15	.133	0	0	0	.000	0	2	1.000	19	3	40	3	43.0	0	99.0		

Player Averages

Sets Played	Kills per set	Assists per set	Service aces per set	Digs per set	Blocks per set	Points per set
53	1.43	0.04	0.00	0.36	0.81	1.87



2023-24 Purdue Women's Volleyball
Individual Match-by-Match
All games

Page 11/15
as of Oct 22, 2023

#15 CARR, Lizzie

Date	Opponent	SP	Attack				Set			Serve				Recept			DIG	Blocking				Team			
			K	E	TA	PCT	A	TA	PCT	SA	SE	TA	PCT	RE	TA	PCT		BS	BA	BE	TOTAL	BHE	POINTS	HIT%	SCORE
08/25/2023	Duke	3	0	0	1	.000	0	0	.000	0	0	0	.000	0	0	.000	0	0	0	0	0.0	0	0.0	.296	3-1
08/26/2023	Creighton	1	0	1	2	-.500	0	0	.000	0	0	0	.000	0	0	.000	0	0	2	0	2.0	0	1.0	.148	0-3
08/27/2023	Loyola Chicago	*5	3	2	11	.091	0	3	.000	0	0	0	.000	1	1	.000	1	0	3	1	3.0	0	4.5	.178	2-3
08/31/2023	at Kansas	2	2	0	3	.667	0	0	.000	0	0	0	.000	0	0	.000	1	0	0	0	0.0	0	2.0	.229	3-2
09/08/2023	SMU	1	0	0	0	.000	0	0	.000	0	0	0	.000	0	0	.000	0	0	0	0	0.0	0	0.0	.346	3-1
09/09/2023	Kentucky	1	0	0	0	.000	0	0	.000	0	0	0	.000	0	1	1.000	0	0	0	0	0.0	0	0.0	.218	3-2
09/22/2023	at Maryland	2	2	0	2	1.000	0	0	.000	0	0	0	.000	0	0	.000	0	0	1	0	1.0	0	2.5	.238	3-1
09/24/2023	at Rutgers	1	1	1	2	.000	0	0	.000	0	0	0	.000	0	0	.000	0	0	1	0	1.0	0	1.5	.234	3-0
10/01/2023	Northwestern	2	0	0	0	.000	0	0	.000	0	0	0	.000	0	0	.000	0	0	1	0	1.0	0	0.5	.215	2-3
10/07/2023	Iowa	1	1	1	2	.000	0	0	.000	0	0	0	.000	0	0	.000	0	0	0	0	0.0	0	1.0	.303	3-0
10/11/2023	at Indiana	2	0	0	0	.000	0	1	.000	0	0	0	.000	0	0	.000	0	0	0	0	0.0	0	0.0	.243	1-3
10/18/2023	Indiana	1	0	0	0	.000	0	0	.000	0	0	0	.000	0	0	.000	0	0	0	0	0.0	0	0.0	.272	3-1
10/22/2023	at Penn St.	1	0	0	0	.000	0	0	.000	0	0	0	.000	0	0	.000	0	0	0	0	0.0	0	0.0	.248	3-1
Totals		23	9	5	23	.174	0	4	.000	0	0	0	.000	1	2	.500	2	0	8	1	8.0	0	13.0		

Player Averages

Sets Played	Kills per set	Assists per set	Service aces per set	Digs per set	Blocks per set	Points per set
23	0.39	0.00	0.00	0.09	0.35	0.57



2023-24 Purdue Women's Volleyball
Individual Match-by-Match
All games

Page 12/15
as of Oct 22, 2023

#17 HUDSON, Eva

Date	Opponent	SP	Attack				Set			Serve				Recept			Blocking					Team			
			K	E	TA	PCT	A	TA	PCT	SA	SE	TA	PCT	RE	TA	PCT	DIG	BS	BA	BE	TOTAL	BHE	POINTS	HIT%	SCORE
08/25/2023	Duke	*4	14	3	44	.250	0	3	.000	0	1	17	.941	2	23	.913	12	1	2	1	3.0	0	16.0	.296	3-1
08/26/2023	Creighton	*3	10	4	34	.176	0	0	.000	1	1	11	.909	2	21	.905	7	0	0	0	0.0	0	11.0	.148	0-3
08/27/2023	Loyola Chicago	*5	16	11	52	.096	0	0	.000	0	0	15	1.000	1	32	.969	10	0	1	0	1.0	0	16.5	.178	2-3
08/31/2023	at Kansas	*5	15	4	45	.244	1	2	.500	0	0	15	1.000	1	27	.963	11	1	1	0	2.0	0	16.5	.229	3-2
09/01/2023	vs Marquette	*5	21	4	55	.309	0	1	.000	0	0	11	1.000	0	11	1.000	10	0	3	0	3.0	0	22.5	.209	3-2
09/08/2023	SMU	*4	21	4	45	.378	1	1	1.000	3	0	23	1.000	0	16	1.000	10	0	2	0	2.0	0	25.0	.346	3-1
09/09/2023	Kentucky	*5	12	7	48	.104	0	0	.000	0	0	19	1.000	0	22	1.000	5	0	3	1	3.0	0	13.5	.218	3-2
09/14/2023	UCF	*3	12	1	36	.306	0	1	.000	0	1	13	.923	1	11	.909	7	0	3	0	3.0	0	13.5	.349	3-0
09/15/2023	Southern California	*4	17	2	50	.300	1	7	.143	1	0	12	1.000	0	28	1.000	7	1	0	0	1.0	0	19.0	.300	1-3
09/22/2023	at Maryland	*4	20	7	50	.260	0	2	.000	0	0	11	1.000	0	12	1.000	7	0	4	0	4.0	0	22.0	.238	3-1
09/24/2023	at Rutgers	*3	15	6	35	.257	0	3	.000	0	0	12	1.000	1	19	.947	5	0	1	0	1.0	0	15.5	.234	3-0
09/29/2023	Nebraska	*5	19	7	57	.211	0	3	.000	0	0	14	1.000	1	29	.966	3	0	2	0	2.0	0	20.0	.229	2-3
10/01/2023	Northwestern	*5	17	3	53	.264	0	2	.000	1	2	16	.875	1	20	.950	6	0	2	0	2.0	0	19.0	.215	2-3
10/04/2023	Illinois	*3	16	3	33	.394	0	1	.000	1	1	11	.909	0	18	1.000	8	0	0	0	0.0	0	17.0	.276	3-0
10/07/2023	Iowa	*3	13	2	37	.297	0	1	.000	1	1	22	.955	1	21	.952	11	1	0	0	1.0	0	15.0	.303	3-0
10/11/2023	at Indiana	*4	17	3	41	.341	2	5	.400	0	2	21	.905	4	33	.879	8	0	1	0	1.0	0	17.5	.243	1-3
10/15/2023	at Ohio St.	*4	19	6	52	.250	0	0	.000	0	0	14	1.000	2	27	.926	9	0	2	1	2.0	0	20.0	.304	3-1
10/18/2023	Indiana	*4	19	5	51	.275	0	1	.000	0	1	21	.952	1	12	.917	9	0	1	0	1.0	0	19.5	.272	3-1
10/22/2023	at Penn St.	*4	19	7	49	.245	1	3	.333	0	1	15	.933	0	21	1.000	6	0	2	0	2.0	0	20.0	.248	3-1
Totals		77	312	89	867	.257	6	36	.167	8	11	293	.962	18	403	.955	151	4	30	3	34.0	0	339.0		

Player Averages

Sets Played	Kills per set	Assists per set	Service aces per set	Digs per set	Blocks per set	Points per set
77	4.05	0.08	0.10	1.96	0.44	4.40



2023-24 Purdue Women's Volleyball
Individual Match-by-Match
All games

Page 13/15
as of Oct 22, 2023

#18 WARREN, Brielle

			Attack				Set			Serve				Recept				Blocking				Team			
Date	Opponent	SP	K	E	TA	PCT	A	TA	PCT	SA	SE	TA	PCT	RE	TA	PCT	DIG	BS	BA	BE	TOTAL	BHE	POINTS	HIT%	SCORE
10/01/2023	Northwestern	1	1	0	1	1.000	0	0	.000	0	0	0	.000	0	0	.000	0	0	0	0	0.0	0	1.0	.215	2-3
Totals		1	1	0	1	1.000	0	0	.000	0	0	0	.000	0	0	.000	0	0	0	0	0.0	0	1.0		

Player Averages

Sets Played	Kills per set	Assists per set	Service aces per set	Digs per set	Blocks per set	Points per set
1	1.00	0.00	0.00	0.00	0.00	1.00



2023-24 Purdue Women's Volleyball
Individual Match-by-Match
All games

Page 14/15
as of Oct 22, 2023

#21 KANE, Julia

			Attack				Set			Serve				Recept				Blocking				Team			
Date	Opponent	SP	K	E	TA	PCT	A	TA	PCT	SA	SE	TA	PCT	RE	TA	PCT	DIG	BS	BA	BE	TOTAL	BHE	POINTS	HIT%	SCORE
10/01/2023	Northwestern	1	0	0	0	.000	0	0	.000	0	0	1	1.000	0	2	1.000	0	0	0	0	0.0	0	0.0	.215	2-3
Totals			1	0	0	.000	0	0	.000	0	0	1	1.000	0	2	1.000	0	0	0	0	0.0	0	0.0		

Player Averages

Sets Played	Kills per set	Assists per set	Service aces per set	Digs per set	Blocks per set	Points per set
1	0.00	0.00	0.00	0.00	0.00	0.00



2023-24 Purdue Women's Volleyball
Individual Match-by-Match
All games

Page 15/15
as of Oct 22, 2023

#22 RASTOVSKI, Emily

		Attack					Set			Serve				Recept			Blocking					Team			
Date	Opponent	SP	K	E	TA	PCT	A	TA	PCT	SA	SE	TA	PCT	RE	TA	PCT	DIG	BS	BA	BE	TOTAL	BHE	POINTS	HIT%	SCORE
08/25/2023	Duke	2	0	0	0	.000	0	0	.000	0	0	0	.000	0	0	.000	0	0	1	0	1.0	0	0.5	.296	3-1
08/27/2023	Loyola Chicago	*3	0	1	3	-.333	0	0	.000	0	0	0	.000	0	0	.000	0	0	1	0	1.0	0	0.5	.178	2-3
10/07/2023	Iowa	1	1	1	2	.000	0	0	.000	0	0	0	.000	0	0	.000	0	0	0	0	0.0	0	1.0	.303	3-0
Totals		6	1	2	5	-.200	0	0	.000	0	0	0	.000	0	0	.000	0	0	2	0	2.0	0	2.0		

Player Averages

Sets Played	Kills per set	Assists per set	Service aces per set	Digs per set	Blocks per set	Points per set
6	0.17	0.00	0.00	0.00	0.33	0.33



Purdue Women's Volleyball
Individual Career Summaries
All games

Page 1/7
as of Oct 22, 2023

ANDERSON, Taylor

SEASON	TEAM	SM-MP	K	K/S	E	TA	PCT	A	A/S	SA	SA/S	SE	DIG	D/S	RE	BS	BA	TB	B/S	BE	BHE	PTS	PTS/S
2023-24	Purdue	65-18	18	0.28	8	52	.192	618	9.51	12	0.18	21	117	1.80	2	4	45	49	0.75	4	5	56.5	0.87
TOTAL		65 - 18	18	0.28	8	52	.192	618	9.51	12	0.18	21	117	1.80	2	4	45	49	0.75	4	5	56.5	0.87

Single Game Highs

Statistic	Value	
Kills	3	at Ohio St. 10/15/23, vs SMU 09/08/23
Attacks	5	at Penn St. 10/22/23, at Ohio St. 10/15/23, vs SMU 09/08/23
Assists	56	vs SMU 09/08/23
Serve Aces	3	vs Illinois 10/04/23
Digs	12	vs Kentucky 09/09/23
Blocks	6	vs UCF 09/14/23
Block solos	1	at Ohio St. 10/15/23, at Penn St. 10/22/23, vs Southern California 09/15/23, at Rutgers 09/24/23
Block assists	6	vs UCF 09/14/23
PCT	1.000	vs Nebraska 09/29/23

BROWN, Emily

SEASON	TEAM	SM-MP	K	K/S	E	TA	PCT	A	A/S	SA	SA/S	SE	DIG	D/S	RE	BS	BA	TB	B/S	BE	BHE	PTS	PTS/S
2020-21	MIZ	91-24	1	0.01	0	4	.250	73	0.80	16	0.18	38	307	3.37	30	0	0	0	0.00	0	0	17.0	0.19
2021-22	MIZ	93-28	1	0.01	0	3	.333	66	0.71	17	0.18	30	329	3.54	28	0	0	0	0.00	0	0	18.0	0.19
2022-23	Purdue	96-31	0	0.00	0	6	.000	33	0.34	20	0.21	36	165	1.72	25	0	0	0	0.00	0	1	20.0	0.21
2023-24	Purdue	41-18	0	0.00	0	0	.000	5	0.12	1	0.02	6	19	0.46	3	0	0	0	0.00	0	0	1.0	0.02
TOTAL FOR Purdue		137 - 49	0	0.00	0	6	.000	38	0.28	21	0.15	42	184	1.34	28	0	0	0	0.00	0	1	21.0	0.15
TOTAL		321 - 101	2	0.01	0	13	.154	177	0.55	54	0.17	110	820	2.55	86	0	0	0	0.00	0	1	56.0	0.17

Single Game Highs

Statistic	Value	
Kills	1	at Tennessee 02/12/21, vs Alabama 10/13/21
Attacks	2	vs Ohio St. 04/15/21, vs Wisconsin 10/08/22, at Tennessee 02/12/21
Assists	9	vs Arkansas 11/04/20
Serve Aces	3	at Northwestern 10/28/22
Digs	25	vs South Dakota 09/05/21



Purdue Women's Volleyball
Individual Career Summaries
All games

Page 2/7
as of Oct 22, 2023

CARR, Lizzie

SEASON	TEAM	SM-MP	K	K/S	E	TA	PCT	A	A/S	SA	SA/S	SE	DIG	D/S	RE	BS	BA	TB	B/S	BE	BHE	PTS	PTS/S
2023-24	Purdue	23-13	9	0.39	5	23	.174	0	0.00	0	0.00	0	2	0.09	1	0	8	8	0.35	1	0	13.0	0.57
TOTAL		23 - 13	9	0.39	5	23	.174	0	0.00	0	0.00	0	2	0.09	1	0	8	8	0.35	1	0	13.0	0.57

Single Game Highs

Statistic	Value	
Kills	3	vs Loyola Chicago 08/27/23
Attacks	11	vs Loyola Chicago 08/27/23
Digs	1	vs Loyola Chicago 08/27/23, at Kansas 08/31/23
Blocks	3	vs Loyola Chicago 08/27/23
Block assists	3	vs Loyola Chicago 08/27/23
PCT	1.000	at Maryland 09/22/23

CHICOINE, Chloe

SEASON	TEAM	SM-MP	K	K/S	E	TA	PCT	A	A/S	SA	SA/S	SE	DIG	D/S	RE	BS	BA	TB	B/S	BE	BHE	PTS	PTS/S
2023-24	Purdue	77-19	299	3.88	92	790	.262	11	0.14	22	0.29	31	146	1.90	13	3	16	19	0.25	2	1	332.0	4.31
TOTAL		77 - 19	299	3.88	92	790	.262	11	0.14	22	0.29	31	146	1.90	13	3	16	19	0.25	2	1	332.0	4.31

Single Game Highs

Statistic	Value	
Kills	24	vs Kentucky 09/09/23
Attacks	55	vs Marquette 09/01/23
Assists	2	vs Marquette 09/01/23
Serve Aces	4	vs Illinois 10/04/23
Digs	13	vs Creighton 08/26/23
Blocks	3	vs Indiana 10/18/23, vs Loyola Chicago 08/27/23
Block solos	1	vs Iowa 10/07/23, vs Creighton 08/26/23, vs Loyola Chicago 08/27/23
Block assists	3	vs Indiana 10/18/23
PCT	.455	vs Iowa 10/07/23



Purdue Women's Volleyball
Individual Career Summaries
All games

Page 3/7
as of Oct 22, 2023

COLVIN, Raven

SEASON	TEAM	SM-MP	K	K/S	E	TA	PCT	A	A/S	SA	SA/S	SE	DIG	D/S	RE	BS	BA	TB	B/S	BE	BHE	PTS	PTS/S
2021-22	Purdue	96-30	169	1.76	54	330	.348	4	0.04	2	0.02	4	12	0.13	0	13	105	118	1.23	20	1	236.5	2.46
2022-23	Purdue	122-32	269	2.20	98	599	.285	6	0.05	43	0.35	59	74	0.61	1	22	151	173	1.42	19	1	409.5	3.36
2023-24	Purdue	77-19	160	2.08	67	356	.261	7	0.09	20	0.26	29	47	0.61	2	11	97	108	1.40	11	0	239.5	3.11
TOTAL		295 - 81	598	2.03	219	1285	.295	17	0.06	65	0.22	92	133	0.45	3	46	353	399	1.35	50	2	885.5	3.00

Single Game Highs

Statistic	Value	
Kills	18	vs Utah 09/02/22
Attacks	32	vs Utah 09/02/22
Assists	2	vs Illinois 10/04/23
Serve Aces	5	vs Utah 09/02/22
Digs	8	vs Marquette 09/01/23
Blocks	16	at Maryland 11/23/22
Block solos	5	at Maryland 11/23/22
Block assists	11	at Maryland 11/23/22

HEANEY, Grace

SEASON	TEAM	SM-MP	K	K/S	E	TA	PCT	A	A/S	SA	SA/S	SE	DIG	D/S	RE	BS	BA	TB	B/S	BE	BHE	PTS	PTS/S
2023-24	Purdue	53-15	76	1.43	35	199	.206	2	0.04	0	0.00	0	19	0.36	0	3	40	43	0.81	3	0	99.0	1.87
TOTAL		53 - 15	76	1.43	35	199	.206	2	0.04	0	0.00	0	19	0.36	0	3	40	43	0.81	3	0	99.0	1.87

Single Game Highs

Statistic	Value	
Kills	13	at Ohio St. 10/15/23
Attacks	24	at Ohio St. 10/15/23
Assists	1	vs Northwestern 10/01/23, at Ohio St. 10/15/23
Digs	3	at Ohio St. 10/15/23, at Penn St. 10/22/23
Blocks	6	vs Indiana 10/18/23
Block solos	1	vs Kentucky 09/09/23, vs SMU 09/08/23, at Penn St. 10/22/23
Block assists	6	vs Indiana 10/18/23
PCT	.600	vs UCF 09/14/23



Purdue Women's Volleyball
Individual Career Summaries
All games

Page 4/7
as of Oct 22, 2023

HORNUNG, Ali

SEASON	TEAM	SM-MP	K	K/S	E	TA	PCT	A	A/S	SA	SA/S	SE	DIG	D/S	RE	BS	BA	TB	B/S	BE	BHE	PTS	PTS/S
2021-22	Purdue	63-22	0	0.00	1	1	-1.000	3	0.05	7	0.11	11	32	0.51	3	0	2	2	0.03	0	0	8.0	0.13
2022-23	Purdue	122-32	2	0.02	4	17	-.118	29	0.24	28	0.23	26	303	2.48	15	0	0	0	0.00	1	0	30.0	0.25
2023-24	Purdue	69-19	0	0.00	0	2	.000	9	0.13	7	0.10	11	162	2.35	16	1	0	1	0.01	0	0	8.0	0.12
TOTAL		254 - 73	2	0.01	5	20	-.150	41	0.16	42	0.17	48	497	1.96	34	1	2	3	0.01	1	0	46.0	0.18

Single Game Highs

Statistic	Value	
Kills	1	vs Penn St. 11/12/22, at Penn St. 11/25/22
Attacks	3	at Minnesota 10/22/22
Assists	4	at Illinois 09/30/22
Serve Aces	4	vs Bradley 09/02/22
Digs	20	at Illinois 09/30/22, at Iowa 09/25/22
Blocks	2	vs Rutgers 10/02/21
Block solos	1	at Kansas 08/31/23
Block assists	2	vs Rutgers 10/02/21

HUDSON, Eva

SEASON	TEAM	SM-MP	K	K/S	E	TA	PCT	A	A/S	SA	SA/S	SE	DIG	D/S	RE	BS	BA	TB	B/S	BE	BHE	PTS	PTS/S
2022-23	Purdue	122-32	515	4.22	176	1420	.239	10	0.08	34	0.28	15	249	2.04	21	7	54	61	0.50	5	0	583.0	4.78
2023-24	Purdue	77-19	312	4.05	89	867	.257	6	0.08	8	0.10	11	151	1.96	18	4	30	34	0.44	3	0	339.0	4.40
TOTAL		199 - 51	827	4.16	265	2287	.246	16	0.08	42	0.21	26	400	2.01	39	11	84	95	0.48	8	0	922.0	4.63

Single Game Highs

Statistic	Value	
Kills	24	at Illinois 09/30/22
Attacks	68	at Maryland 11/23/22
Assists	2	vs Maryland 10/16/22, at Penn St. 11/25/22, at Indiana 10/11/23, at Tennessee 08/27/22
Serve Aces	4	at Michigan St. 11/04/22
Digs	17	at Illinois 09/30/22
Blocks	5	vs Utah 09/02/22, at Iowa 09/25/22, at Northwestern 10/28/22
Block solos	1	11 times
Block assists	5	vs Utah 09/02/22, at Northwestern 10/28/22

KANE, Julia

SEASON	TEAM	SM-MP	K	K/S	E	TA	PCT	A	A/S	SA	SA/S	SE	DIG	D/S	RE	BS	BA	TB	B/S	BE	BHE	PTS	PTS/S
2023-24	Purdue	1-1	0	0.00	0	0	.000	0	0.00	0	0.00	0	0	0.00	0	0	0	0	0.00	0	0	0.0	0.00
TOTAL		1 - 1	0	0.00	0	0	.000	0	0.00	0	0.00	0	0	0.00	0	0	0	0	0.00	0	0	0.0	0.00



**Purdue Women's Volleyball
Individual Career Summaries
All games**

Page 5/7
as of Oct 22, 2023

MYERS, Lourdes

SEASON	TEAM	SM-MP	K	K/S	E	TA	PCT	A	A/S	SA	SA/S	SE	DIG	D/S	RE	BS	BA	TB	B/S	BE	BHE	PTS	PTS/S
2022-23	Purdue	29-16	25	0.86	8	54	.315	0	0.00	0	0.00	0	3	0.10	0	0	16	16	0.55	3	0	33.0	1.14
2023-24	Purdue	66-19	98	1.48	29	189	.365	2	0.03	0	0.00	0	20	0.30	0	5	49	54	0.82	18	1	127.5	1.93
TOTAL		95 - 35	123	1.29	37	243	.354	2	0.02	0	0.00	0	23	0.24	0	5	65	70	0.74	21	1	160.5	1.69

Single Game Highs

Statistic	Value	
Kills	11	vs Indiana 10/18/23
Attacks	24	vs Indiana 10/18/23
Assists	1	at Kansas 08/31/23, at Penn St. 10/22/23
Digs	3	vs Southern California 09/15/23
Blocks	7	vs UCF 09/14/23
Block solos	2	vs Northwestern 10/01/23
Block assists	7	vs UCF 09/14/23

POULTER, Lorrin

SEASON	TEAM	SM-MP	K	K/S	E	TA	PCT	A	A/S	SA	SA/S	SE	DIG	D/S	RE	BS	BA	TB	B/S	BE	BHE	PTS	PTS/S
2019-20	Denver	94-31	39	0.41	24	124	.121	330	3.51	26	0.28	30	101	1.07	1	1	9	10	0.11	2	4	70.5	0.75
2020-21	Denver	58-17	138	2.38	46	366	.251	254	4.38	20	0.34	23	108	1.86	0	3	35	38	0.66	4	4	178.5	3.08
2021-22	Denver	101-29	35	0.35	32	138	.022	475	4.70	34	0.34	45	164	1.62	1	0	8	8	0.08	3	9	73.0	0.72
2022-23	Denver	102-28	68	0.67	26	166	.253	1040	10.20	47	0.46	34	214	2.10	0	6	65	71	0.70	5	14	153.5	1.50
2023-24	Purdue	26-11	9	0.35	5	36	.111	195	7.50	2	0.08	13	40	1.54	3	1	9	10	0.38	1	0	16.5	0.63
TOTAL FOR Purdue		26 - 11	9	0.35	5	36	.111	195	7.50	2	0.08	13	40	1.54	3	1	9	10	0.38	1	0	16.5	0.63
TOTAL		381 - 116	289	0.76	133	830	.188	2294	6.02	129	0.34	145	627	1.65	5	11	126	137	0.36	15	31	492.0	1.29

Single Game Highs

Statistic	Value	
Kills	12	at South Dakota St. 02/14/21, at Kansas City 03/27/21
Attacks	34	vs South Dakota 04/03/21
Assists	59	vs North Dakota 10/15/22
Serve Aces	4	at Oral Roberts 03/01/21, vs North Dakota St. 11/06/21, vs Hofstra 09/03/22
Digs	17	at Colorado 08/27/22
Blocks	7	vs San Francisco 09/16/22
Block solos	1	11 times
Block assists	6	vs North Dakota St. 03/19/21, at Oral Roberts 03/01/21, vs San Francisco 09/16/22



Purdue Women's Volleyball
Individual Career Summaries
All games

Page 6/7
as of Oct 22, 2023

RASTOVSKI, Emily

SEASON	TEAM	SM-MP	K	K/S	E	TA	PCT	A	A/S	SA	SA/S	SE	DIG	D/S	RE	BS	BA	TB	B/S	BE	BHE	PTS	PTS/S
2022-23	Purdue	10-8	8	0.80	4	20	.200	0	0.00	0	0.00	0	0	0.00	0	0	2	2	0.20	0	0	9.0	0.90
2023-24	Purdue	6-3	1	0.17	2	5	-.200	0	0.00	0	0.00	0	0	0.00	0	0	2	2	0.33	0	0	2.0	0.33
TOTAL		16 - 11	9	0.56	6	25	.120	0	0.00	0	0.00	0	0	0.00	0	0	4	4	0.25	0	0	11.0	0.69

Single Game Highs

Statistic	Value	
Kills	4	vs Xavier 09/10/22
Attacks	8	vs Xavier 09/10/22
Blocks	1	at Penn St. 11/25/22, vs Loyola Chicago 08/27/23, vs Xavier 09/10/22, vs Duke 08/25/23
Block assists	1	vs Xavier 09/10/22, vs Duke 08/25/23, at Penn St. 11/25/22, vs Loyola Chicago 08/27/23

SCHERMERHORN, Maddie

SEASON	TEAM	SM-MP	K	K/S	E	TA	PCT	A	A/S	SA	SA/S	SE	DIG	D/S	RE	BS	BA	TB	B/S	BE	BHE	PTS	PTS/S
2019-20	Purdue	101-30	0	0.00	0	7	.000	14	0.14	1	0.01	1	86	0.85	14	0	0	0	0.00	0	0	1.0	0.01
2020-21	Purdue	84-23	2	0.02	1	6	.167	17	0.20	1	0.01	6	119	1.42	12	0	0	0	0.00	0	1	3.0	0.04
2021-22	Purdue	125-33	1	0.01	1	7	.000	23	0.18	4	0.03	8	178	1.42	22	0	0	0	0.00	0	0	5.0	0.04
2022-23	Purdue	110-29	3	0.03	1	23	.087	110	1.00	23	0.21	34	508	4.62	32	0	0	0	0.00	0	0	26.0	0.24
2023-24	Purdue	77-19	0	0.00	1	13	-.077	68	0.88	8	0.10	23	331	4.30	20	0	0	0	0.00	0	1	8.0	0.10
TOTAL		497 - 134	6	0.01	4	56	.036	232	0.47	37	0.07	72	1222	2.46	100	0	0	0	0.00	0	2	43.0	0.09

Single Game Highs

Statistic	Value	
Kills	1	6 times
Attacks	4	vs Wisconsin 10/08/22
Assists	9	vs Loyola Chicago 08/27/23
Serve Aces	3	vs Utah 09/02/22, vs Minnesota 09/23/22
Digs	28	at Michigan 11/06/22

WARREN, Brielle

SEASON	TEAM	SM-MP	K	K/S	E	TA	PCT	A	A/S	SA	SA/S	SE	DIG	D/S	RE	BS	BA	TB	B/S	BE	BHE	PTS	PTS/S
2023-24	Purdue	1-1	1	1.00	0	1	1.000	0	0.00	0	0.00	0	0	0.00	0	0	0	0	0.00	0	0	1.0	1.00
TOTAL			1 - 1	1	1.00	0	1	1.000	0	0.00	0	0.00	0	0	0.00	0	0	0	0.00	0	0	1.0	1.00

Single Game Highs

Statistic	Value	
Kills	1	vs Northwestern 10/01/23
Attacks	1	vs Northwestern 10/01/23
PCT	1.000	vs Northwestern 10/01/23



Purdue Women's Volleyball
Individual Career Summaries
All games

Page 7/7
as of Oct 22, 2023

WOLLARD, Kenna

SEASON	TEAM	SM-MP	K	K/S	E	TA	PCT	A	A/S	SA	SA/S	SE	DIG	D/S	RE	BS	BA	TB	B/S	BE	BHE	PTS	PTS/S
2023-24	Purdue	28-11	26	0.93	19	80	.088	0	0.00	0	0.00	0	10	0.36	0	1	15	16	0.57	4	0	34.5	1.23
TOTAL		28 - 11	26	0.93	19	80	.088	0	0.00	0	0.00	0	10	0.36	0	1	15	16	0.57	4	0	34.5	1.23

Single Game Highs

Statistic	Value	
Kills	6	at Rutgers 09/24/23, vs Nebraska 09/29/23
Attacks	15	vs Nebraska 09/29/23
Digs	5	vs Illinois 10/04/23
Blocks	4	vs Nebraska 09/29/23, at Rutgers 09/24/23
Block solos	1	at Rutgers 09/24/23
Block assists	4	vs Nebraska 09/29/23
PCT	.500	vs Southern California 09/15/23, at Maryland 09/22/23

YIM, Sydney

SEASON	TEAM	SM-MP	K	K/S	E	TA	PCT	A	A/S	SA	SA/S	SE	DIG	D/S	RE	BS	BA	TB	B/S	BE	BHE	PTS	PTS/S
2022-23	Purdue	4-4	0	0.00	0	0	.000	2	0.50	0	0.00	0	2	0.50	0	0	1	1	0.25	0	0	0.5	0.13
TOTAL		4 - 4	0	0.00	0	0	.000	2	0.50	0	0.00	0	2	0.50	0	0	1	1	0.25	0	0	0.5	0.13

Single Game Highs

Statistic	Value	
Assists	1	vs Bradley 09/02/22, vs Rutgers 10/02/22
Digs	2	vs Bradley 09/02/22
Blocks	1	vs Rutgers 10/02/22
Block assists	1	vs Rutgers 10/02/22