

WOMEN'S BASKETBALL

 2022-23 PURDUE BOILERMAKERS

 **TALE OF THE TAPE**

THE MATCHUP

- Keep the Boilermakers on pace for their best start through 11 games since the 2015-16 season.

KG QUICK HITS**HEAD COACH KATIE GEARLDS**

- Born - Oct. 26, 1984 (38 years old)
- Second season as head coach at her alma mater
- Hired as associate head coach on March 26, 2021
- Elevated to head coach on Sept. 16, 2021
- 10th season as a head coach, second at Purdue
- Six-year professional basketball career
- College - Purdue '07
- High School - Beech Grove '03

AT PURDUE (2021-PRESENT)

- Went 17-15 in opening campaign, posting a 10-win improvement, the best jump by a first-year head coach at Purdue
- Head coach just 47 days before the 2021-22 season began
- Announced as the associate head coach on March 26, 2021, as part of a succession plan that, originally, would see her take over the head seat for the 2022-23 campaign

AT MARIAN (2013-2021)

- Went 228-50 (82%) over eight seasons at Marian in the NAIA
- Won back-to-back NAIA National Championships in 2016 and 2017
- Named NAIA National Coach of the Year three times (2016, 2017, 2020)

PROFESSIONAL CAREER (2007-2013)

- Played six professional seasons across the WNBA, Spain, Greece, Portugal and Slovakia
- Went 7th overall to the Seattle Storm in the 2007 WNBA Draft, the highest pick in program history.

AT PURDUE (2004-07)

- 2007 All-America, 4-time All-Big Ten selection, 2007 Big Ten champ
- Tallied 1,974 points, 238 3-pointers and 103 wins at Purdue
- Four NCAA Tournament appearances and a 2007 Elite Eight

AT BEECH GROVE HIGH SCHOOL

- 2003 3A Indiana State Champion, Indiana Miss Basketball
- 2,521 career points, sixth in state history, averaging 30.1 points
- 2003 McDonald's All-America Game MVP, alongside LeBron James

LAST TIME OUT

- The Boilermakers suffered a heartbreaking loss to No. 20/21 Maryland on Thursday night, as Shyanne Sellers drained a 3-pointer as time expired to lift the Terrapins to a 77-74 win.
- Abbey Ellis tallied 18 points off the bench, while Lasha Petree chipped in 14 points.
- Purdue committed 22 turnovers that turned into 25 points for the Terrapins.

STARTING LINEUPS

Lineup (Record)	Games
1. Layden, Terry, Petree, Harper, Hardin (8-2)	1-10

Player	19	20	21	22	23	Total	Record [^]
Abbey Ellis	-	29*	23*	31	-	83*	18-14
Cassidy Hardin	3	8	-	31	10	52	33-19
Caitlyn Harper	3*	5*	10*	32*	10	60*	7-2
Ainhua Holzer	-	-	-	-	-	-	-
Madison Layden	-	-	21	28	10	59	30-29
Ava Learn	-	-	-	-	-	-	-
Lasha Petree	12	29	27	26	10	104	8-2
Addison Potts	-	-	-	-	-	-	-
Kate Rudini	-	-	-	-	-	-	-
Jayla Smith	-	-	-	1	-	1	0-1
Lilly Stoddard	-	-	-	-	-	-	-
Jeanae Terry	-	11*	23*	32	10	76*	26-17
Rickie Woltman	-	-	-	22	-	22	11-11

* includes starts at previous school | ^ Record at Purdue

BOILER NOTES**BOILERMAKER BASKETBALL**

- Purdue Women's Basketball is in its 48th season in 2022-23 with an all-time record of 911-527. Last season, Purdue became the 40th program in NCAA Division I history to reach 900 wins and ranks fifth in all-time victories among current Big Ten teams.
- The Boilermakers are the only team from the Big Ten to win a national championship, hoisting the title in 1999.
- The program has reached the NCAA Tournament 26 times with 12 Sweet 16s, eight Elite 8s, three final fours and a trio of national championship game appearances.
- In addition to its NCAA success, Purdue owns the Big Ten record for most tournament titles with nine.

KG ERA YEAR 2

- With a full offseason to prepare for the 2022-23 campaign, head coach Katie Gearlds is in her second year at her alma mater.
- Taking over the reins of the program a mere 47 days ahead of the season last year, Gearlds converted Purdue into a fast-paced, let-fly offense that smashed the program record for 3-pointers made and attempted.
- After the program won just seven games in 2020-21, Gearlds guided the Boilermakers to 17 wins in her initial campaign, marking the biggest win improvement by a first-year head coach at Purdue.
- In the second game against a ranked opponent under Gearlds, Purdue snapped a 19-game skid against AP Top 25 teams with a 66-61 win over No. 17 Florida State at the St. Pete Showcase.
- Gearlds took the Boilermakers back to the postseason for the first time since 2017-18, reaching the second round of the WNIT.
- Purdue's 10-2 mark in the non-conference in 2021-22 was the second best by a first-year head coach in program history.

ELITE COMPANY

- Jeanae Terry is the only player in the nation averaging seven points, eight rebounds and seven assists this year.
- When you expand the numbers to include players averaging 6 ppg, 6 rpg, 6 apg, Terry is in elite company:

	School	PPG	RPG	APG
Jeanae Terry	Purdue	7.7	8.0	7.8
Caitlin Clark	Iowa	27.3	7.2	7.0
Olivia Miles	Notre Dame	16.4	7.1	6.4
Megan McConnell	Duquesne	10.4	10.8	6.4

DROPPING DIMES

- Head coach Katie Gearlds wants her team to run and shoot before turning the ball over.
- Led by Jeanae Terry's 78 assists, Purdue is averaging 17.6 helpers per game to rank 28th nationally.
- Terry is 20th nationally with a 2.89 assist-to-turnover ratio.
- The Boilermakers have made it an emphasis to make the extra pass recording three games with 20 or more assists.
- Last year, Purdue ranked 22nd nationally and fourth in the Big Ten with 16.1 assists per game, the most by Purdue since 2009-10.

HOT HANDS

- Purdue has shot 50% or better in six games this season, the fifth most nationally.
- The Boilermakers' season-best 60.7% mark was against Harvard.
- Starting the season with a clip of 45% or better in the first five outings, Purdue was ranked No. 1 in the nation.
- Purdue has five players in the main rotation shooting 50% or better this season.

RANKED MATCHUPS

- Head coach Katie Gearlds snapped a 19-game skid to ranked teams with a 66-61 win over No. 17 Florida State last season.
- The Boilermakers went 1-6 against ranked teams in 2021-22.
- Purdue's last win against a ranked Big Ten team came on Jan. 20, 2019, against No. 20 Indiana.
- Gearlds was 23-22 against ranked teams during her playing days in West Lafayette. Her highest ranked win was over No. 5 Kansas State as a freshman in 2003.

SPLASH ZONE

- Following a record-breaking 3-point barrage last season, head coach Katie Gearlds has an even deeper roster to shoot the 3-ball.
- Purdue's current roster has a combined 785 3-pointers in their careers, including previous stops.
- Purdue obliterated the single-game and season marks for 3-pointers made (239) and attempted (738) during 2021-22.
- Hardly surprising, when you consider that Gearlds won the 2007 College Slam 3-Point Contest on the men's and women's side.
- Gearlds would also not hesitate to tell you that she could still out shoot all of them today.

Name	Season 3-Pointers	Career 3-Pointers
Abbey Ellis	12	133*
Cassidy Hardin	22	176
Caitlyn Harper	4	72*
Madison Layden	16	124
Lasha Petree	16	230*
Addison Potts	-	-
Jayla Smith	6	22
Jeanae Terry	-	33*
Totals	76	792

* Includes Previous School

TRANSFER TROUBLEMAKERS

- Lasha Petree and Caitlyn Harper have quickly become impact players for the Boilermakers.
- The duo set the tone in the exhibition with 36 combined points.
- Both were prolific scorers at their previous institutions and have provided a boost to the Purdue offense.

Games with Harper or Petree as a Leading Scorer:	7
Games either Harper or Petree in double figures:	10
Games both Harper or Petree in double figures:	5
Harper/Petree Combined Season Average:	30.1 PPG
Highest Combined Game:	40 2x last vs. Syracuse (H-9, P-31)

NATIONAL NAE

- Jeanae Terry's two non-point double-doubles to start the season put the senior in the Big Ten and national leaderboards.
- Terry has tallied five or more assists in eight games and 10 or more rebounds four times.
- Terry has dished out eight or more assists in six games this season, the most by a Boilermaker in the last 15 seasons.
- Terry finished her junior year ranked sixth in the Big Ten in assist-to-turnover ratio, third in assists (per game), 11th in rebounds per game and second in triple-doubles.

Jeanae Terry	National	Big Ten	Stat
Assist-to-Turnover	20	3	2.9
Assists	2	1	78
Assists Per Game	3	1	7.8
Rebounds	60	4	80

LASHA "JUST A BUCKET" PETREE

- Fifth-year senior Lasha Petree wasted no time cementing herself as one of Purdue's go-to options on offense.
- Petree leads the team with 19.1 points per game, while shooting 53% (75-143) with 16 triples.
- She has scored in double figures in 10 games this season.
- The Detroit native has gone for 20 or more points in four outings, including a season high of 31 against Syracuse.
- The Detroit native is 14th in Division I among active career scorers.
- At Rutgers, the Detroit native totaled 8.3 points per night and hit 38 3-pointers at a 37.6% clip.
- Her final season at Bradley saw her average 18 points per game with 53 triples to earn All-MVC honors for the second straight year and appear on the Naismith Award Watch List.
- Petree joined Purdue out of the transfer portal following three years at Bradley and last year at Rutgers.

BOILER NOTES**MAKING IMPROVEMENTS**

• Even with 47 days of preparation, the Boilermakers took strides to improve production and limit opponent success during the 2021-22 season.

Stat	20-21	21-22	22-23
Points Per Game	66.2	69.2	80.8
Opp. Points Per Game	73.5	67.3	66.4
Field Goal Pct.	41.4	42.2	50.4
Opp Field Goal Pct.	44.7	41.5	37.6
3-Pts Per Game	6.2	7.5	7.6
Opp. 3-Pts Per Game	5.5	4.8	6.9
Rebounds Per Game	35.3	35.8	38.5
Assists Per Game	13.9	15.8	17.6
Turnovers Per Game	17.3	15.1	16.8
Steals Per Game	7.3	7.0	7.6
Blocks Per Game	2.6	3.9	3.7

WINNING THE SEGMENTS

• A point of emphasis for the Boilermakers this season from head coach Katie is a fast start to quarters.
 • Breaking quarters into five-minute segments, Gearlds challenges her squad to attack the first five-minutes of each period.

Record When Winning	1Q	2Q	3Q	4Q
First Five Minutes	3-2	6-1	4-1	6-0
The Entire Quarter	3-2	4-1	5-1	6-0

MULTI-HEADED MONSTER

• The Boilermakers pose a problem to every team they face this year – who are you going to stop?
 • Head coach Katie Gearlds has a multitude of scoring options at her disposal, as three different players have led the team in scoring this season.
 • Six different players have connected from the outside as well.

Points Leaders	Games	Record	Season High
Abbey Ellis	2	1-1	29 vs. SIUE
Caitlyn Harper	1	1-0	17, twice
Lasha Petree	6	5-1	31 vs. Syracuse
Cassidy Hardin	1	1-0	18 vs. Indiana State

START UNKNOWN, FINISH UNFORGETTABLE

• Jeanae Terry wasted little time adding to her historic resume with the first two non-point double-doubles in Purdue history.
 • Going for 10 assists and 10 rebounds against Marshall, Terry is just the fifth player from the Big Ten since 2009 to achieve such a feat.
 • The senior did it again against Marshall with 10 rebounds, 10 assists and nine points, becoming just the fifth player in the nation over the last 15 seasons to record multiple non-point triple-doubles.
 • Terry became the 13th Boilermaker in program history to go for a double-double in the season opener.
 • The senior is the first Boilermaker to record multiple triple-doubles in a season and a career with two last year.
 • Terry is fueled by her personal mantra - Start unknown. Finish unforgettable.
 • Only five players in the nation have record two non-point double-doubles since 2009.

Player	Team	Date/Opp	Stat
Jeanae Terry	Purdue	11/10/22, Marshall	10r, 10a
Jaz Shelly	Nebraska	2/3/22, Penn State	12r, 11a
Samantha Logic	Iowa	11/16/14, Robert Morris	14r, 11a
Samantha Logic	Iowa	12/28/12, Texas	15r, 14a
Lacey Simpson	Illinois	11/18/09, Central Mich.	16r, 11a

NUMBERS TO KNOW UNDER GEARLDS

• Purdue is 20-5 when leading after the first quarter and 23-3 when taking a lead into the fourth quarter.
 • The Boilermakers are 17-9 when knocking down seven or more 3-pointers.
 • Purdue is 12-7 when shooting 35% from distance or better and 21-5 when shooting 40% or better overall, including 11-1 with a field goal clip above 50%.
 • The Boilermakers are 17-2 when outrebounding opponents.
 • Purdue is 13-5 when forcing 15 or more turnovers.
 • The Boilermakers hold a 20-3 record when scoring 70 or more points, while also posting a 20-5 mark when holding opponents below that mark.

EFFICIENT ELLIS

• Abbey Ellis is averaging 12.4 points per game this season to sit second on the team.
 • Ellis is 10th in the nation in scoring among players without a start this year.
 • The Australian international was electric in her 29-point performance against SIUE. In just 18 minutes, the senior was 9-of-11 from the field, 3-of-4 from distance and a perfect 8-of-8 at the line, the most by a non-starter in Purdue's history.
 • Ellis was one of three players in the nation to average 15 points per game and shoot over 70% from the field, 60% from distance and 90% at the line (Ellis - 17 ppg, 71.4% fg, 66.7% 3pt, 100% ft) in the first two weeks of the season.
 • She quickly became a fan favorite in West Lafayette last year, earning All-Big Ten honorable mention in her first campaign.
 • Ellis notched the 10th best free throw percentage in program history with an 85.4% mark at the line (82-96) in 2021-22.
 • Purdue's first Australian rocks a ribbon in her hair during games from a selection that her mother sends her to wear.
 • The senior has also gained a sizeable following on TikTok @abbey_22 with videos shared by Barstool Sports, Slam and more.

INSIDE-OUT

• While the Boilermakers continue to light it up from the outside, Purdue's offense has worked the ball inside this year, averaging 38.6 points per game in the lane with four games over 40.
 • After holding opponents to just 4.8 3-pointers per game last year, that number has ventured up to 6.9 per night.
 • Purdue's interior defense has improved to keep teams to 26.8 points per game in the paint, outscoring teams 386-268 in the lane on the year.
 • The Boilermakers held opponents to a 27.6% clip from behind the arc last season, tied for the second lowest in Purdue history.

HARPING ON HARPER

• Purdue's second transfer commitment out of the portal landed the 2022 WAC Player of the Year from Cal Baptist.
 • She sits third on the team with 11.1 points per game.
 • Harper is 1-of-7 players in the Big Ten averaging over 11 points per game with a shooting clip above 55% (11.0 ppg, 61.6%).
 • The redshirt senior was named the 11th best transfer from a mid-major to a high-major this offseason by HerHoopsStats.com.
 • The Hartland, Wisc., native came to Purdue after leading the WAC in scoring in 2021-22 with 17.7 points per game with a 52.4% shooting clip.
 • Harper's honor haul also includes 2022 CoSIDA Academic All-America, 2021-22 WAC Player of the Year, 2021 WAC Tournament MVP.
 • Hailing from a basketball family, Harper's father Dale played at Bemidji State and her sister Alaina currently plays for Grand Canyon.

OT BOILERS

• Purdue has played in two overtime games under head coach Katie Gearlds with a 1-1 mark. The Boilermakers outlasted Michigan State this season 76-71 in an extra period.
 • The Boilermakers are 34-29 all-time in overtime games.
 • As a player, Gearlds was 5-2 when needing an extra frame.

INDIANA MISS BASKETBALL

• Jayla Smith is the 10th Indiana Miss Basketball to play at Purdue, winning the award in 2021 after a senior campaign of 19.5 points and 4.6 steals per game at Lawrence North.
 • The long history of Purdue welcoming the state's top player extended back to 2003, when Katie Gearlds became the fifth honoree to pick West Lafayette.
 • Madison Layden nearly added to the tally in 2020, coming in second.
 • Purdue holds the record for most Indiana Miss Basketball winners, followed by Indiana, Notre Dame, Tennessee tied for second with four.

BOILERMAKER MISS BASKETBALL WINNERS

Year	Name	High School	Year	Name	High School
1984	Sharon Versyp	Mishawaka	1991	Jennifer Jacoby	Rossville
1995	Stephanie White	Seeger	1998	Kelly Komara	Lake Central
2003	Katie Gearlds	Beech Grove	2005	Jodi Howell	Alexandria
2008	Brittany Rayburn	Attica	2010	Courtney Moses	Oak Hill
2017	Karissa McLaughlin	Homestead	2021	Jayla Smith	Lawrence North

THE WORLD NEEDS MORE

• Head coach Katie Gearlds has placed an emphasis on returning Purdue Women's Basketball back to the national stage.
 • To reach that goal, the program's new culture is centered around success on and off the court.
 • Dedicated to empowering student-athletes, Gearlds posed a question to the players ahead of the season. The answers are displayed on the backs of the Boilermakers' shooting shirts.

What does the world need more of?

Katie Gearlds — Hope	Beth Couture — Compassion
Micheal Scruggs — Faith	Alex Guyton — Understanding
Anastacia Kirby — Freedom	Jaelen Nice — Faith
Lakan Hasser-Smith — Trust	Abbey Ellis — Courage
Cassidy Hardin — Love	Caitlyn Harper — Hope
Ainhua Holzer — Wisdom	Madison Layden —
Compassion	Ava Learn — Love Lasha
Petree — Jesus	Addison Potts — Love
Kate Rudini — Respect	Jayla Smith — Justice
Lilly Stoddard — Faith	Jeanae Terry — Genuineness
Rickie Woltman — Acceptance	

RANDOM ODDS AND ENDS

Name	Consecutive Made Free Throws	Straight Games with a Three	Consecutive Starts
2 - Holzer	-	-	-
3 - Smith	-	-	-
4 - Rudini	-	-	-
5 - Hardin	1	3	13
10 - Terry	3	-	42
11 - Petree	2	10	25*
14 - Learn	8	-	-
23 - Ellis	2	1	-
30 - Potts	-	-	-
31 - Stoddard	-	-	-
33 - Layden	1	2	10
34 - Harper	1	-	48*
35 - Woltman	3	-	-

Opening Tips	Won-Lost	Record in Games
Lasha Petree	4-6-1	8-2

Scoring First	2	3	FT	Record in Games
Cassidy Hardin	1	1		1-1
Caitlyn Harper	1			0-1
Madison Layden	2	2		4-0
Lasha Petree	3			3-0

PURDUE AT MACKEY ARENA

Broke Ground: July 1965

First Game: Dec. 2, 1967

First Women's Game: Dec. 2, 1975 | Purdue 78, Illinois 74

Gearlds Overall: 16-7 | Non-Con: 12-1 | BIG: 4-6

Purdue Overall: 486-173 | Non-Con: 245-71 | BIG: 241-102

Home Wins vs. Ranked Teams: 53

LARGEST CROWDS OF KG ERA

Attendance	Date	Opponent	Result
8,005	1/16/22	No. 5 Indiana	L, 73-78 (OT)
5,457	12/21/21	North Alabama	W, 86-53
4,811	2/27/22	Wisconsin	L, 63-62
3,226	12/5/21	No. 18 Ohio State	L, 70-53
3,103	1/13/22	Iowa	L, 79-66

BIG TEN STANDINGS

	Big Ten	Overall	Streak
Indiana	2-0	10-0	W10
Nebraska	2-0	7-3	W2
Michigan	1-0	9-1	L1
Ohio State	1-0	9-0	W8
Iowa	1-0	7-3	W2
Minnesota	1-0	5-4	L1
Purdue	1-1	8-2	L1
Illinois	1-1	8-2	W1
Maryland	1-1	8-3	W1
Michigan State	0-1	6-4	L4
Northwestern	0-1	4-4	L2
Penn State	0-2	7-3	L3
Rutgers	0-2	4-7	L3
Wisconsin	0-2	3-8	L7

NATIONAL RANKINGS

	National	BIG	Stat
Assist-to-Turnover	75	8	1.05
Assists per Game	28	7	17.6
Blocked Shots per Game	103	6	3.7
Field-Goal %	7	3	50.4
Field-Goal % Defense	99	4	37.6
Fouls Per Game	132	7	16.6
FT Made Per Game	63	2	20.5
FT Attempts Per Game	92	8	73.2
Fouls Per Game	40	1	15.0
Rebound Margin	92	6	5.2
Defensive Rebounds Per Game	24	3	29.9
Offensive Rebounds Per Game	322	13	8.6
Rebounds Per Game	138	9	38.5
Scoring Defense	234	8	66.4
Scoring Margin	63	7	14.4
Scoring Offense	22	5	80.8
Steals Per Game	209	12	7.6
3-Point Attempts Per Game	129	7	21.0
3-Point Percentage	45	3	36.2
3-Point Percentage Defense	214	7	31.4
3-Pointers Per Game	71	7	7.6
Turnover Margin	257	12	-1.6
Turnovers Forced Per Game	262	12	15.2
Turnovers Per Game	197	9	16.8
Winning Percentage	54	4	80.0

INDIVIDUAL NATIONAL RANKINGS (TOP-50)

TOP 100 RANKINGS	National	BIG	Stat
Abbey Ellis			
Free Throw Percentage	47	5	88.2

Lasha Petree

Field Goal Attempts	28	3	143
Field Goals	10	3	75
Points	14	4	191
Points Per Game	38	6	19.1

Jeanae Terry

Assist-to-Turnover	20	3	2.89
Assists	2	1	78
Assists Per Game	3	1	7.8

BOILER NOTES**LAYDEN IS LITERALLY EVERYWHERE**

- Junior Madison Layden has had a solid start to the season with 7.9 points, 4.0 assists and 5.1 rebounds per game.
- The second-year captain has recorded a steal in 52 of her 62 career games.
- Last year, Layden was one of just 10 players nationally to accumulate 130 rebounds (134), 80 assists (80), 60 three-pointers (63) and 45 steals (49).
- Layden was tabbed All-Big Ten honorable mention last year and All-Big Ten Freshman Team in 2020-21.
- She hit double figures in 21 of 29 outings last year.

JAYLA'S SOPHOMORE JUMP

- Jayla has tallied 7.2 points per game off the bench this season with three games in double figures.
- Smith made significant strides during the offseason to set up a more important role during her sophomore season.
- She matched her career high in her sophomore debut with 16 points against Marshall, including a pair of clutch 3-pointers to seal the win.
- Smith scored over 1,000 points, won one IHSAA 4A State Championship (2020 over Layden's Northwestern) and was named Indiana Miss Basketball during her prep career.

DOCTOR, DOCTOR GIVE ME THE THREE

- Cassidy Hardin's final year in West Lafayette averaging 7.7 points per game with 22 of her 26 made field goals coming from behind the arc.
- A do-anything-for-the-program player, Hardin has one of the quickest catch and releases in the Big Ten. She also has no program playing post defense or laying her body on the line as the team's leader in charges taken.
- In her career, Hardin has made 176 3-pointers and just 27 2-point shots. She is ninth in Purdue history in career 3-pointers.
- Hardin returned for a final year in West Lafayette as a fifth-year senior with the extra year of eligibility by the NCAA. Hardin came back after deferring her start to IU Medical School to next fall with the goal of getting Purdue to the NCAA Tournament.
- With her decision, Hardin is just the third player in program history to play in five different seasons.
- Hardin jumped into the starting lineup for the first time in her career last season and connected on a career-high 78 3-pointers at a 33.5% clip.
- The Bargersville, Ind., native graduated with a degree in honors biochemistry in May of 2022. Her current specialty she would like to pursue is anesthesiology.

DYNAMIC DUO - AVA & RICKIE

- Rickie Woltman and Ava Learn have been a good source of post depth for the Boilermakers this season.
- Woltman, a starter in 22 games last year, completely bought into her new role off the bench during the offseason to provide a one-two punch with Harper.
- The senior is averaging 4.2 points and 3.8 rebounds over 14 minutes per game.
- After seeing her minutes drive up at the end of her freshman season, Learn embraced her role as an all-hustle utility player on the court and electric factory on the bench.
- Learn is scoring 4.2 points in 10.9 minutes per night.
- The sophomore gave the Boilermakers a huge spark in their come-from-behind win over Oklahoma State, scoring 12 points and going 8-of-10 at the line.

BTN PREDICTIONS

- Ahead of the season, Big Ten Network's analyst Meghan McKeown, whom we feel is one of the best basketball minds on television, unveiled her top-20 players and best transfers.
- McKeown tabbed Madison Layden No. 18 in her preseason top-20 impact players in the league.
- 2022 WAC Player of the Year Caitlyn Harper was also picked as one of the top-11 transfers to the Big Ten.
- On the eve of the regular season, McKeown highlighted the Boilermakers as the top sleeper team in the conference.

BALLIN' IN MEXICO

- The Boilermakers posted a 2-1 record during their time at the Cancun Challenge over Thanksgiving weekend with wins over Oklahoma State and Harvard.
- Jeanae Terry and Lasha Petree garnered all-tournament honors.
- Lasha Petree topped 20 points in a pair of games to finish with 19.3 over the three outings at a 47.9% shooting clip.
- Terry went for 8.0 points, 10.7 rebounds and 7.1 assists per game, totaling 22 of Purdue's 55 helpers on the weekend.
- Following a 22-point win over Harvard, the Boilermakers suffered their first setback of the season with a one-point loss to Florida State.
- Gearlds' fired her squad up for the tournament finale, as the Boilermakers rallied from a nine-point deficit in the second half to beat Oklahoma State 71-65, closing the game on an 11-2 run.

HITTING ONE HUNDRED

- The Boilermakers put up 100 points in their 42-point victory over SIUE, the second century game
- Four different Boilermakers finished in double figures, led by Abbey Ellis' 29 points, the most by a Purdue player ever off the bench.
- Purdue shot a blistering 56.5% from the field, only going 5-of-17 from deep, while matching SIUE's total output with 58 points in the paint.
- The Boilermakers flipped 25 Cougar turnovers in 42 points.
- The Boilermakers scored 101 points against Denver on Dec. 12, 2021, the first 100-point performance since scoring 109 against Central Michigan on Dec. 28, 2013

TRIPLE-DOUBLE HISTORY

- Jeanae Terry stands alone in Purdue history, men's & women's basketball, as the only player to ever record multiple triple-doubles in a career.
- The junior recorded the fourth triple-double in program history with 10 points, 11 rebounds and 12 assists against Minnesota, made more impressive by not committing a turnover in the win.
- Her first career triple-double came against Miami in December when she went for 11 points, 12 rebounds and 10 assists.
- In both of her triple-double performances, the last category Terry hit double digits in was points.
- Terry is tied for fifth in Big Ten history.
- Terry now sits with Stephanie White and Danielle Campbell as the only Boilermakers in triple-double club.

PURDUE TRIPLE-DOUBLES

Name	Opponent, Date	Points	Rebounds	Assists/Blocks
Jeanae Terry	Minnesota, 1/27/22	10	11	12 asts.
Jeanae Terry	Miami, 12/19/21	11	12	10 asts.
Stephanie White	Indiana, 1/22/99	20	11	10 asts.
Danielle Campbell	Butler, 11/17/07	12	11	11 blks.
Joe Barry Carroll*	Arizona, 12/10/77	16	16	11 blks.

*BoilerBall all-time leader in rebounds and blocked shots.

THE FIRST FIVE, THE KG 5 (NAME STILL UNDER CONSIDERATION)

- On National Signing Day, head coach Katie Gearlds welcome five high school seniors to the Boilermaker family, including two ESPNW Top 100 players.
- The class was ranked No. 21 by ESPNW.
- The first recruiting class that Gearlds had a full year to study, Mary Ashley Groot, McKenna Layden, Rashunda Jones, Sophie Swanson and Emily Monson will join Purdue in the summer of 2023.
- Mary Ashley Groot is a 6-2 forward from New York City tabbed a four-star prospect and part of Prospect Nation's Elite 150 and No. 97 by ESPNW
- Rashunda Jones is a 5-8 guard from Washington, Ind., earning four stars, a 93 rating and the No. 79 player by ESPNW.
- Sophie Swanson, a 5-10 guard from Barrington, Ill., was named the 2022 Illinois Miss Basketball after leading Barrington High School to Illinois runner-up honors.
- Emily Monson was named a Prospects Nation Elite 150 member as a 6-0 guard out of Murfreesboro, Tenn.
- The Layden legacy at Purdue will continue with McKenna, a 6-1 guard from Kokomo, Ind., and the little sister of Madison also garnered Elite 150 status from Prospect Nation.

BOILER NOTES**WBOF INDUCTEE CAROLYN PECK**

- Former Purdue head coach Carolyn Peck was named a member of the Women's Basketball Hall of Fame class of 2023.
- Peck served as Purdue's head coach for two seasons and led the Boilermakers to the 1999 NCAA National Championship, the only Big Ten team to win a women's basketball title.
- Following two seasons in West Lafayette, Peck coached the WNBA Orlando Miracle and at Florida. She also served on staff at Vanderbilt under her former player and Purdue standout Stephanie White.
- Peck has also served as one of the premier women's basketball analysts for ESPN.

A BASKETBALL LIFE

- Head coach Katie Gearlds is on of just seven former top-10 picks in the WNBA Draft to serve as a head coach this season.
- Gearlds was taken seventh overall by the Seattle Storm in 2007, Purdue's highest draft pick.

TOP-10 WNBA PICKS & CURRENT DI HEAD COACHES

Name	School	Year - Pick, Team
DeLisha Milton-Jones	Old Dominion	1999 - 4th, Los Angeles
Dawn Staley	South Carolina	1999 - 9th, Charlotte
Tamika Williams-Jeter	Dayton	2002 - 6th, Minnesota
Kara Lawson	Duke	2003 - 5th, Sacramento
Nicole Powell	UC Riverside	2004 - 3rd, Charlotte
Lindsay Whalen	Minnesota	2004 - 4th, Connecticut
Katie Gearlds	Purdue	2007 - 7th, Seattle
Laura Harper	Towson	2008 - 10th, Sacramento

- Prior to her All-American career at Purdue, Gearlds was named the 2003 Indiana Miss Basketball and MVP of the McDonald's All-America Game, alongside LeBron James.

MCDONALD'S ALL-AMERICA MVP & CURRENT DI HEAD COACH

Name	School	Year	Alma Mater
Bobby Hurley	Arizona State	1989	Duke
Jerry Stackhouse	Vanderbilt	1993	North Carolina
Shaheen Holloway	Seton Hall	1996	Seton Hall
Katie Gearlds	Purdue	2003	Purdue

NEW YEAR, NEW CULTURE

- The Boilermakers are **ALL-IN** this season under head coach Katie Gearlds. Gearlds, who took over the program a mere 47 days prior last year, had a full offseason to establish a new culture and bring back elite expectations to this storied program.
- On top of spending the full offseason implementing an overhaul of the offense and defensive principles (rather than adjusting on the fly last year), the squad spent the summer building a culture centered on leadership and excellence on and off the court.
- Prior to the first practice of the year, the coaching staff asked the team for goals. The primary goal was taking the next step for the program and return it to the NCAA Tournament.

SINGLE-SEASON TURNAROUND

- Katie Gearlds guided Purdue to 17 wins this season after inheriting a squad that won just seven contests in 2020-21 47 days ahead of the year.
- The 10-win improvement is the most by a first-year head coach in program history and tied for the third best overall.

SINGLE-SEASON WIN IMPROVEMENTS

SEASON	WINS	IMPROVEMENT	COACH
1994	13	+13	Linn Dunn
1999	34	+11	Carolyn Peck
2022	17	+10	Katie Gearlds
1981	14	+10	Dr. Ruth Jones
2006	26	+9	Kristy Curry
2016	20	+9	Sharon Versyp

SENIOR LEADERSHIP

- Purdue's roster features six players classified as a senior (Terry, Ellis, Woltman), redshirt senior (Harper) or a fifth year senior (Hardin, Petree).
- The elder group entered the season with 558 combined games of experience under their belts.
- The six seniors are tied for the most in the Big Ten (including graduate students) with Michigan state, Penn State, Maryland and Ohio State.

MOST SENIORS

School	Senior/Grads	School	Senior/Grads
Purdue	6	Maryland	6
Michigan St.	6	Ohio St.	6
Penn St.	6	Michigan	5
Indiana	4	Iowa	4
Minnesota	4	Indiana	4
Iowa	4	Minnesota	4
Nebraska	3	Illinois	2

AT THE ALMA MATER

- After an All-American career at Purdue, head coach Katie Gearlds returned to her alma mater in 2021-22 to return the program to national prominence.
- This season, Gearlds is one of 32 coaches in Division I to lead their alma mater.
- She is one of 17 coaches in the six major basketball conferences to lead her alma mater.

Katie Gearlds	Purdue	Lindsay Whalen	Minnesota
Brooke Wychoff	Florida State	Amy Williams	Nebraska
Niele Ivey	Notre Dame	Nicole Powell	Stanford
Felisha Legette-Jack	Syracuse	Robin Harmony	Miami
Krista Gerlich	Texas Tech	Kellie Harper	Tennessee
Jim Flanery	Creighton	Mike Neighbors	Arkansas
Doug Bruno	DePaul	Scott Rueck	Oregon State
Anthony Bozzella	Seton Hall	Adia Barnes	Arizona
Denise Dillon	Villanova		

STARTING FIVE RETURNS

- The Boilermakers brought back their entire starting lineup from 2021-22 with 145 of a possible 160 starts back in West Lafayette.
- Aided by the NCAA waiver following the COVID-19 pandemic, Cassidy Hardin will become just the third player to play in five different seasons in program history.
- The five returners match the most by a Boilermaker squad in the last 10 years, joining the 2019-20 campaign.
- Even with Rickie Woltman, Cassidy Hardin, Jeanae Terry, Madison Layden and Abbey Ellis back for another year in West Lafayette, transfers Lasha Petree and Caitlyn Harper will enter their names into the lineup, meaning Purdue will have an experienced group coming off the bench.

Year	Returning Starters	Starts From Prev. Year	Final Record	NCAA
2013-14	3	97	22-9	Y
2014-15	2	59	11-20	
2015-16	3	94	20-12	Y
2016-17	3	101	23-13	Y
2017-18	2	78	20-14	
2018-19	3	114	19-15	
2019-20	5	170	18-14	
2020-21	3	98	7-16	
2021-22	2	41	17-15	
2022-23	5	145	-	-

PURDUE SPECIALTY STATS (PURDUE/OPP)

	Off TO	Paint	2nd-Ch.	Fast B.	Bench
Marshall	13-6	28-30	12-6	13-5	16-9
Murray State	17-6	46-24	9-9	15-6	23-13
SIUE	42-7	58-22	12-8	23-2	44-23
Indiana State	15-23	34-18	1-7	21-7	26-25
Harvard	14-11	46-24	10-15	10-4	31-14
FSU	20-16	24-40	14-15	14-9	20-24
Okla. State	14-7	28-24	17-4	8-10	29-4
Syracuse	13-16	54-28	9-17	13-8	33-3
MSU	21-18	34-30	15-9	18-15	23-17
Maryland	19-25	34-28	6-17	2-15	26-23
Illinois State					
Texas A&M					
Iowa					
Wisconsin					
Penn State					
Michigan					
NU					
Nebraska					
Minnesota					
Illinois					
Ohio State					
Indiana					
Rutgers					
NU					
MSU					
Indiana					
Penn State					
Minnesota					

Totals	189-135	386-268	105-107	137-81	271-155
Averages	18.9-13.5	38.6-26.8	10.5-10.7	13.7-8.1	27.1-15.5

PURDUE SCORING BY CLASS

	Fr.	So.	Jr.	R-Sr./Sr.	5th
Marshall	-	16	13	22	22
Murray State	-	12	15	37	26
SIUE	2	9	3	65	21
Indiana State	-	18	10	14	35
Harvard	2	10	-	41	32
FSU	-	3	15	31	26
Okla. State	-	15	6	29	21
Syracuse	-	18	4	22	34
MSU	-	8	9	30	29
Maryland	-	4	4	41	25
Illinois State					
Texas A&M					
Iowa					
Wisconsin					
Penn State					
Michigan					
NU					
Nebraska					
Minnesota					
Illinois					
Ohio State					
Indiana					
Rutgers					
NU					
MSU					
Indiana					
Penn State					
Minnesota					
Totals	4	113	79	332	271
Averages	0.4	11.3	7.9	33.2	27.1

PURDUE IN THE POLLS

Week	AP	Coaches	NET
Preseason	-	-	-
Week 1	-	-	-
Week 2	-	-	-
Week 3	-	-	-
Week 4	-	-	-
Week 5	RV	-	36
Week 6	-	-	-
Week 7	-	-	-
Week 8	-	-	-
Week 9	-	-	-
Week 10	-	-	-
Week 11	-	-	-
Week 12	-	-	-
Week 13	-	-	-
Week 14	-	-	-
Week 15	-	-	-
Week 16	-	-	-
FINAL	-	-	-

SINGLE-GAME RECORDS

SINGLE-GAME POINTS			
Overall	41	Katie Gearlds	at Wisconsin 2/18/07
Senior	41	Katie Gearlds	at Wisconsin 2/18/07
Junior	37	MaChelle Joseph	at Michigan State 2/15/91
Sophomore	40	Shereka Wright	at Michigan 2/17/02
Freshman	34	Leslie Johnson	at Vanderbilt 12/5/93

SINGLE-GAME FIELD GOALS			
Overall	16	MaChelle Joseph	at Michigan State 2/15/91
Senior	14	Jannon Roland	at Ohio state 1/23/97
Junior	16	MaChelle Joseph	at Michigan State 2/15/91
Sophomore	15	Shereka Wright	at Michigan 2/17/02
Freshman	13	Leslie Johnson	Northwestern 2/27/94

SINGLE-GAME 3-POINTERS			
Overall	12	Brittany Rayburn	at Minnesota 1/12/12
Senior	12	Brittany Rayburn	at Minnesota 1/12/12
Junior	7	Karissa McLaughlin	at Michigan State 1/30/20
Sophomore	9	2x, K. McLaughlin	Northwestern 2/17/19
Freshman	6	5x, Madison Layden	Iowa 1/18/21

SINGLE-GAME FREE THROWS MADE			
Overall	16	Shereka Wright	Penn State 1/16/03
Senior	13	2x, Shereka Wright	at Northwestern 2/15/04
Junior	16	Shereka Wright	Penn State 1/16/03
Sophomore	14	3x, Courtney Moses	at Northwestern 1/26/12
Freshman	14	Leslie Johnson	Ohio State 2/13/94

SINGLE-GAME REBOUNDING			
Overall	25	Leslie Schultz	at Miami (OH) 12/2/81
Senior	20	Joy Holmes	at Wisconsin 1/27/91
Junior	25	Leslie Schultz	at Miami (OH) 12/2/81
Sophomore	20	Cathery Tyree	at Michigan State 1/11/85
Freshman	23	Natasha Cender	Michigan 2/17/76
Offensive	12	Joy Holmes	Minnesota 2/10/91
Defensive	16	2x, Whitney Bays	at Dayton 12/7/14

SINGLE-GAME ASSISTS			
Overall	16	MaChelle Joseph	Northern Illinois 3/22/92
Senior	16	MaChelle Joseph	Northern Illinois 3/22/92
Junior	14	Lisa Jahner	Michigan 3/7/87
Sophomore	12	MaChelle Joseph	New Mexico State 12/29/89
Freshman	11	3x, K. McLaughlin	Penn State 1/28/18

SINGLE-GAME BLOCKS			
Overall	11	Danielle Campbell	Butler 11/17/07
Senior	9	Ae'Rianna Harris	at #5 South Carolina 12/15/19
Junior	11	Danielle Campbell	Butler 11/17/07
Sophomore	7	3x, Ae'Rianna Harris	Lamar 11/18/17
Freshman	7	2x, Nora Kiesler	at Penn State 1/30/16

SINGLE-GAME STEALS			
Overall	12	Joy Holmes	Minnesota 1/13/89
Senior	9	Michelle Duhart	Michigan State 2/24/00
Junior	10	Cherelle George	South Carolina 11/26/05
Sophomore	12	Joy Holmes	Minnesota 1/13/89
Freshman	8	FahKara Malone	Illinois 2/8/07

BOILER NOTES

• Check out which Boilermakers are climbing the single-season and career charts this year.

CAREER 3-POINTERS

1.	Karissa McLaughlin	244	2018-21
2.	Courtney Moses	240	2011-14
3.	Katie Gearlds	238	2004-07
4.	Brittany Rayburn	201	2009-12
5.	Dominique Oden	193	2017-20
6.	Jodi Howell	188	2006-10
7.	Ashley Morrisette	181	2014-17
8.	Stephanie White	183	1996-99
9.	Cassidy Hardin	176	2019-Present
10.	Ukari Figgs	174	1996-99
11.	KK Houser	167	2010-14
12.	Beth Jones	157	2001-04
13.	MaChelle Joseph	154	1989-92
14.	Kelly Komara	137	1999-02
15.	Jannon Roland	133	1994-97
	Madison Layden	124	2021-Present

CAREER ASSISTS AT PURDUE

11.	Ukari Figgs	409	1996-99
12.	Kelly Komara	402	1999-02
13.	Katie Gearlds	399	2004-07
14.	Ashley Morrisette	370	2014-17
15.	Karissa McLaughlin	362	2018-21
16.	Dominique Oden	345	2017-20
17.	Kayana Traylor	311	2019-21
18.	Cindy Lamping	308	1992-95
19.	Courtney Moses	294	2011-14
20.	Shereka Wright	291	2001-04
21.	Carol Emanuel	278	1980-83
22.	Sharika Webb	277	2003-06
23.	Teri Moren	275	1988-91
24.	Lindsay Wisdom-Hylton	273	2005-09
25.	Jeanae Terry	261	2022-Present

CAREER TRIPLE-DOUBLES

1.	Jeanae Terry	2	2021-Present
----	--------------	---	--------------

SEASON ASSISTS

1.	Lisa Jahner	201	1987-88
2.	Jeanae Terry	183	2021-22
3.	April Wilson	179	2015-16
4.	Ashley Morrisette	172	2016-17
5.	Erika Valek	171	2002-03
6.	MaChelle Joseph	167	1991-92
7.	KK Houser	161	2012-13
8.	Stephanie White	160	1997-98
9.	MaChelle Joseph	159	1990-91
	Jennifer Jacoby	159	1993-94
11.	Jennifer Jacoby	158	1994-95
12.	Stephanie White	156	1998-99
13.	MaChelle Joseph	152	1989-90
14.	MaChelle Joseph	159	1988-89
15.	FahKara Malone	148	2006-07

SEASON SCORING AVERAGE

1.	MaChelle Joseph	22.2	1991-92
2.	Joy Holmes	21.5	1990-91
3.	Stephanie White	20.6	1997-98
4.	Katie Douglas	20.4	1990-00
5.	MaChelle SJoseph	20.3	1990-91
6.	Stephanie White	20.2	1998-99
7.	Carol Emanuel	20.1	1982-83
	Shereka Wright	20.1	2003-04
9.	MaChelle Joseph	19.4	1989-90
10.	Jeanae Terry	78	2022-23
	Katie Gearlds	19.1	2006-07
12.	Shereka Wright	19.0	2001-02
13.	MaChelle Joseph	18.9	1988-89
	Jannon Roland	18.9	1996-97
	Shereka Wright	18.9	2002-03
16.	Christa LaCroix	18.8	1987-88
17.	Leslie Johnson	18.5	1993-94
18.	Carol Emanuel	16.9	1981-82
19.	Joy Homes	16.8	1989-90
	Ashley Morrisette	16.8	2016-17
21.	Stephanie White	16.4	1996-97
22.	Leslie Schultz	16.3	1982-83
	Ukari Figgs	16.3	1998-99
24.	Cindy Lamping	16.0	1992-93



KAITE GEARLDS

HEAD COACH | 2ND SEASON AT PURDUE | 10TH SEASON OVERALL | PURDUE '07

@katiegearlds4
@katiegearlds4

Year	Overall	BIG	Non-Con.	BIG Tourney	NCAAs	WNIT	Home	Road	Neutral	vs. Top-25	Unranked
2021-22	17-15	7-11	9-2	0-1	-	1-1	11-6	5-7	1-2	1-6	16-9
2022-23	8-2	1-1	7-1	-	-	-	5-1	1-0	2-1	0-1	8-1
Totals	25-17	8-12	16-3	0-1	-	1-1	16-7	6-7	3-3	1-7	24-10
Pct.	.595	.400	.842	.000	-	.500	.696	.461	.500	.125	.706

RECORD-BREAKING FIRST YEAR

- Katie Gearlds reached the 250-win plateau for her career against Harvard, reaching the feat in 315 career games.

RECORD-BREAKING FIRST YEAR

- The Katie Gearlds era started sooner than expected in 2021-22, when she took over the program a mere 47 days prior to the season opener.
- Despite being thrust into the head chair, Gearlds guided the program on its first step back to national prominence.
- Purdue finished 17-15 on the year, winning 10 more games than the previous campaign. It was the best win improvement by first-year head coach at Purdue and the third best in program history.
- The Boilermakers finished 10-2 in the non-conference, marking the second-best clip by a first-year head coach.
- Purdue snapped a 19-game skid against ranked opposition when Gearlds and the Boilermakers knocked off No. 17 Florida State at the St. Pete Showcase.
- The Boilermakers reached the postseason for the first time since 2017-18, ending the campaign in the second round of the WNIT.
- Abbey Ellis, Madison Layden and Jeanae Terry all garnered All-Big Ten honorable mention.

COACHING EXPERIENCE

- Spent eight seasons taking Marian University winning back-to-back NAIA National Championships in 2016 and 2017.
- Went 228-50 record, an 82% clip with the Knights.
- Three-time NAIA National Coach of the Year, won 10 total Crossroads League titles and made seven appearances in the NAIA Tournament.
- Guided 12 WBCA NAIA All-America selections, compared to just five in the first 37 years of the program's existence.

PROFESSIONAL CAREER

- Played professionally over six seasons
- Spent three seasons in the WNBA with the Seattle Storm,
- Was taken with the seventh overall pick in the 2007 WNBA Draft, the highest selection ever from Purdue
- Two of her closest teammates and friends over the years are WNBA legend Sue Bird and fellow WNBA great and New Orleans Pelicans Vice President of Basketball Operations Swin Cash.

ALL-AMERICAN AT PURDUE CAREER

- Was a three-year starter from 2004-07.
- Ranks fourth in program history with 1,974 points and was the ninth fastest to join the 1,000-point club.
- Named a Legend of Mackey Arena for the 50th season.
- Won two Big Ten Tournament titles and never missed the NCAA Tournament with Gearlds in the squad
- Reached three Sweet 16s and one Elite Eight.
- Set the Purdue single-game record with 41 points at Wisconsin on Feb. 18, 2007, and scored 707 points to tie the single-season program record.
- 2007 Third Team AP All-America WBCA Honorable Mention
- Four-time All-Big Ten and the 2004 Big Ten Freshman of the Year.
- Earned a bachelor's degree in sociology and minored in psychology and communications from Purdue in 2007.

KG Quips

Having a similar swagger she had in her playing days, Gearlds is always good for a quick quip and a motivational word for her players.

- **"All In"** – Gearlds' motto for the 2022-23 season. Developing a new culture.
- **"Let's Ride"** – Gearlds' motto for the 2021-22 season. Have fun, play loose.
- **"Be Tough to Beat"** – Drive to compete, work to improve and stay together.

ONE-OF-A-KIND PREP CAREER

- Attended Beech Grove High School.
- Named the Indiana Miss Basketball in 2003.
- Amassed 2,521 career points, good for sixth in IHSAA history.
- Averaged 30.1 points, 9.4 rebounds, 5.4 assists and 5.1 steals per game to lead Beech Grove High School to the 2003 Class 3A State Championship.
- Nike/WBCA All-America, First Team All-State and the Gatorade Indiana Player of the Year.
- A McDonald's All-American, was named the MVP of the McDonald's All-America Game the same season as a young talent from Akron, Ohio – LeBron James.

ELITE LEADERS

- Gearlds is the highest draft pick in Purdue history, going seventh overall to the Seattle Storm in 2007.
- She is one-of-eight current Division I head coaches who were also a Top-10 WNBA pick.
- The MVP of the 2003 McDonald's All-America Game alongside the boy's game honoree LeBron James, Gearlds is one-of-four former MVPs to be a head coach in 2021-22 and the only women's representative.

INSPIRED BY GREATNESS

- Gearlds has a deep bench of basketball legends who have touched and continue to influence her career.
- One of the few people who can say they've worked with two G.O.A.T.s, Gearlds was the MVP of the 2003 McDonald's All-America Game with LeBron James.
- Sue Bird, her teammate with the Storm and a mentor over the last 15 years, inspired Gearlds to go into coaching.
- She also shared the court in Seattle with Swin Cash (V.P. New Orleans Pelicans), Adia Barnes (Arizona head coach) and Lauren Jackson (owner Melbourne Boomers).
- She competed against Chris Paul in the skills challenge ahead of the 2003 McDonald's All-America Game.

AN INDIANA LEGEND

- One of the best products of Indiana basketball, Gearlds claimed a state title, a Big Ten championship and a national title with programs from the Crossroads State.
- Named Indiana Miss Basketball as a senior at Beech Grove in 2003, Gearlds guided the Hornets to a 3A state championship, setting a state record across all classes with 33 points in the final. Today, she ranks 11th in state history with 2,521 career points.
- As a Boilermaker from 2003-07, Gearlds reached the NCAA Tournament four times, won two Big Ten Tournament titles, sits fourth in Purdue history with 1,974 career points and holds the record for points in a season with 707 with Stephanie White.
- Following a six-year professional career, Gearlds took over the reins at Marian in Indianapolis, posting a 227-49 record over eight years, winning three NAIA Coach of the Year honors and claiming two national championships.

GEARLDS' YEAR-BY-YEAR

Year	School	Overall	Conf.	Post.	Rank
2013-14	Marian	16-16	8-10	-	-
2014-15	Marian	28-6	14-4	NAIA R32	-
2015-16	Marian	32-6	16-2	NAIA Champ	No. 1
2016-17	Marian	35-3	17-1	NAIA Champ	No. 1
2017-18	Marian	32-3	17-1	NAIA R16	No. 8
2018-19	Marian	27-7	16-2	NAIA R32	No. 17
2019-20	Marian	31-3	16-2	NAIA R16	No. 13
2020-21	Marian	27-6	16-0	NAIA R32	No. 9
2021-22	Purdue	17-15	7-11	1-1	-
2022-23	Purdue	8-2	1-1	-	-
10th Year		253-67	8-12	1-1	-

GEARLDS' TIMELINE

2021-Present	Head Coach, Purdue
2013-21	Head Coach, Marian
2013	Toyota Huelva, Spain
2011-12	Orion Ibaizabal Galdakao, Portugal
2010	FEA Neas Halkindonas, Greece
2008	Kosit Kosice, Slovakia
2007-09	Seattle Storm, WNBA
2003-07	All-America Guard, Purdue
1999-03	All-America Guard, Beech Grove High School

POWER 5 COACHES UNDER 40

Age	Name	School	Birthdate
35	Jacie Hoyt	Oklahoma State	4/2/1987
37	Kelly Rae Finley	Florida	4/27/1985
38	Katie Gearlds	Purdue	10/26/1984
39	Carolyn Kieger	Penn State	8/17/1983
39	Yolett McPhee-McCuin	Ole Miss	4/30/1983
39	Amaka Agugua-Hamilton	Virginia	4/13/1983

GEARLDS IN THE PURDUE RECORD BOOK

Stat	Rank	Total	Year/Game
Single Game Points	1	41	Wisconsin, 2/18/07
Season Points	T1	707	2006-07
Career Points	4	1,974	2004-07
Career Average	4	14.8	2004-07
Season 10+ Point Games	3	33	2006-07
Career 10+ Point Games	4	102	2004-07
Season 30+ Point Games	2	4	2006-07
Career 30+ Point Games	2	6	2004-07
Season Field Goals	2	250	2006-07
Career Field Goals	3	711	2004-07
Season 3-Pointers	T1	88	2006-07
Career 3-Pointers	3	238	2004-07
Season Asst/TO	1	2.57	2005-06
Career Asst/TO	T2	1.64	2004-07
Season Minutes	1	1,359	2006-07
Career Minutes	2	4,475	2004-07

2022-23 ROSTER

No.	Name	Yr.	Pos.	Ht.	Hometown/High School/Previous School
2	Ainhua Holzer	Fr.	G	5-9	Martigny, Switzerland
3	Jayla Smith	So.	G	6-0	Indianapolis, Ind. / Lawrence North
4	Kate Rudini	Fr.	G	5-9	Trumbull, Conn. / Saint Joseph
5	Cassidy Hardin	5th.	G	5-10	Bargersville, Ind. / Center Grove
10	Jeanae Terry	Sr.	G	5-11	Detroit, Mich. / Wayne Memorial / Illinois
11	Lasha Petree	5th	G	6-0	Detroit, Mich. / Arbor Prep / Bradley / Rutgers
14	Ava Learn	So.	G	6-1	Hyde Park, N.Y. / Our Lady of Lourdes
23	Abbey Ellis	Sr.	G	5-6	Melbourne, Australia / Cal Poly
30	Addison Potts	Fr.	G	6-0	Fort Myers, Fla. / South Fort Myers
31	Lilly Stoddard	Fr.	F	6-4	Crown Point, Ind. / Crown Point
33	Madison Layden	Jr.	G	6-1	Kokomo, Ind. / Northwestern
34	Caitlyn Harper	R-Sr.	F	6-2	Hartland, Wisc. / Arrowhead / Cal Baptist
35	Rickie Woltman	Sr.	F	6-3	St. Louis, Mo. / Incarnate Word
Staff	Position	Year at Purdue	Year Coaching	Alma Mater	
Katie Gearlds	Head Coach	2nd Year	10th Year	Purdue - '07	
Beth Couture	Associate Head Coach	7th Year	36th Year	Erksine - '84	
Michael Scruggs	Assistant Coach / Recruiting	4th Year	15th Year	Tennessee - '08	
Alex Guyton	Assistant Coach	4th Year	4th Year	Purdue - '12	
Tiffini Grimes	Deputy Athletic Director / SWA	1st Year		Purdue '05	
Anastacia Kirby	Director of Operations	1st Year		Marian '17	
Lakan Hasser-Smith	Director of Video / Recruiting	1st Year		Marian '16	
Jason Pullara	Director of Strength & Conditioning	4th Year		Purdue '01	
Jessica Lipsett	Director of Athletic Training / Physical Therapy	20th Year		Illinois '00	
Jaelen Nice	Graduate Assistant	1st Year		Purdue '21	
Ainhua Holzer	ah-NOAH	Lilly Stoddard	STAH-dard		
Ava Learn	AA-va	Beth Couture	COO-chur		
Lasha Petree	LAY-sha pee-TREE	Katie Gearlds	Geralds (soft-g)		
Kate Rudini	rue-DEE-nee	Lakan Hasser-Smith	LAKE-en		
Jeanae Terry	Jah-NAY				

Associate Head Coach Beth Couture

Alma Mater: Erskine '84 | **Season at Purdue/Career:** 7th/36th
Select Experience: Purdue Assistant (16-19), Converse College - Head Coach (14-15), Butler - Head Coach (02-14), Presbyterian - Head Coach (89-02)
Select Highlights: 5 WNIT appearances and 4 20-plus win seasons at Butler, 6 NCAA Division II appearances, Kodak All-American during playing time at Erskine

Assistant Coach Michael Scruggs

Alma Mater: Tennessee '08 | **Season at Purdue/Career:** 4th/10th
Select Experience: Loyola-Chicago - Assistant (16-19), LSU - Director of Video Operations (12-14), Chattanooga - Assistant (09-11), Tennessee - Practice Player (04-08)
Select Highlights: Practice player at Tennessee during Candace Parker's career, winning two national titles, also learned from Nikki Fargas at LSU and Wes Moore

Assistant Coach Alex Guyton

Alma Mater: Purdue '12 | **Season at Purdue/Career:** 4th/4th
Select Experience: Purdue - Director of Player Development (19-21), Eastern Illinois - Assistant (17-19), Carmel HS - Assistant (14-17)
Select Highlights: Played 124 games w/ won a pair of Big Ten Tournament titles, 3 NCAA Tournaments and an Elite Eight, coached Michigan's Amy Dilk while at Carmel

Director of Video Lakan Hasser-Smith

Alma Mater: Marian '16 | **Season at Purdue/Career:** 1st/6th
Select Experience: Marian - Assistant (17-21)
Select Highlights: Marian all-time leading scorer, won an NAIA national title as a player and a coach with Katie Gearlds

Director of Operations Anastacia Kirby

Alma Mater: Marian '17 | **Season at Purdue/Career:** 1st/1st
Select Highlights: Won two NAIA national titles playing under Gearlds at Marian

Associate Director of Sports Medicine Jessica Lipsett (Illinois '00)

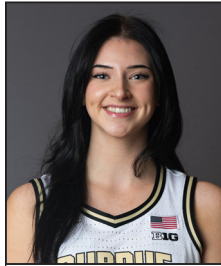
20th season at Purdue, all with the women's basketball program - 2011 Indiana Athletic Trainers Association Trainer of the Year - Husband, Tanner, was the former WBB SID and now the Wrestling Director of Operations - Rumored to have magic healing powers



2 AINHOA HOLZER



3 JAYLA SMITH



4 KATE RUDINI



5 CASSIDY HARDIN



10 JEANAE TERRY



11 LASHA PETREE



14 AVA LEARN



23 ABBEY ELLIS



30 ADDISON POTTS



31 ADDISON POTTS



33 MADISON LAYDEN



34 CAITLYN HARPER



35 RICKIE WOLTMAN



KATIE GEARLDS



BETH COUTURE



MICHAEL SCRUGGS



ALEX GUYTON

 PURDUE WHEN

By Assist/Turnovers	22-23	Under Gearlds
Dishes out 20 or more assists	3 / 3-0	9 / 9-0
Assist on 70% or more of made field goals	2 / 2-0	11 / 8-3
Has more assists than turnovers	6 / 5-1	21 / 15-6
Has 2-to-1 assist-to-turnover ratio	1 / 1-0	3 / 3-0
Commits 15 or more turnovers	6 / 4-2	22 / 11-11
Commits 10 or fewer turnovers	1 / 1-0	6 / 4-2
Allows 20 or more points off turnovers	4 / 2-12	12 / 5-7
Forces 15 or more turnovers	4 / 3-1	18 / 13-5
Scores 20 or more points off turnovers	2 / 2-0	7 / 7-0

By Bench Points	22-23	Under Gearlds
Bench scores 20 points or more	9 / 7-2	28 / 17-11
Bench scores 10 or fewer points		3 / 2-1
Scores more bench points	9 / 8-1	28 / 15-13
Scores equal/less bench points	1 / 0-1	14 / 10-4

By Players in Double Figures	22-23	Under Gearlds
Has no players in double figures	-	-
Has one player in double figures		1 / 1-0
Has two players in double figures	2 / 2-0	5 / 1-4
Has three players in double figures	4 / 3-1	22 / 12-10
Has four players in double figures	5 / 4-1	12 / 9-3
Has five or more players in double figures		2 / 2-0

By Ranked Opponent	22-23	Under Gearlds
Plays a ranked team	1 / 0-1	8 / 1-7
Plays a team ranked 1-5		1 / 0-1
Plays a team ranked 6-10		2 / 0-2
Plays a team ranked 10-25	1 / 0-1	4 / 1-3
Plays an unranked team	9 / 8-1	34 / 24-10

By Day of the Week/Steam/TV	22-23	Under Gearlds
Plays on Sunday	2 / 2-0	14 / 8-6
Plays on Monday	1 / 1-0	4 / 2-2
Plays on Tuesday		1 / 1-0
Plays on Wednesday		6 / 5-1
Plays on Thursday	4 / 3-1	11 / 6-5
Plays on Friday	1 / 0-1	2 / 0-2
Plays on Saturday	1 / 1-0	3 / 2-1
Plays on television	3 / 2-1	9 / 5-4
Plays on internet/webcast	7 / 6-1	33 / 20-13

By Scoring Margin	22-23	Under Gearlds
Margin is 5 points or fewer	3 / 1-2	11 / 5-6
Margin is between 6 and 10	2 / 2-0	9 / 7-2
Margin is between 11 and 20	1 / 1-0	14 / 5-9
Margin is between 21 and 30	3 / 3-0	5 / 5-0
Margin is more than 31	1 / 1-0	3 / 3-0

By Purdue Scoring	22-23	Under Gearlds
Scores 59 points or fewer		6 / 1-5
Scores between 60 and 69		13 / 4-9
Scores between 70 and 79	7 / 5-2	14 / 11-3
Scores 80 or more	3 / 3-0	9 / 9-0

By Opponent Scoring	22-23	Under Gearlds
Holds Opp. to fewer than 50	-	-
Holds Opp. to 51-60	2 / 2-0	10 / 9-1
Holds Opp. to 61-70	4 / 4-0	15 / 11-4
Opp. scores 70 or more	4 / 2-2	17 / 5-12

By Uniforms	22-23	Under Gearlds
Wearing White Uniforms	6 / 4-2	18 / 11-7
Wearing Black Uniforms	2 / 2-0	16 / 10-9
Wearing Gray Uniforms		1 / 1-0
Wearing Gold Uniforms	2 / 2-0	6 / 5-1
Wearing Pink Uniforms		1 / 1-0

SCORING BY QUARTERS

Game	1Q	2Q	1H	3Q	4Q	2H	OT	F
Purdue	25	12	37	21	15	36	-	73
Marshall	11	22	33	20	8	28	-	61
Purdue	29	23	52	23	25	48	-	100
Murray St.	9	10	19	20	19	39	-	58
Purdue	20	15	35	21	21	42	-	77
SJUE	21	10	31	7	16	33	-	54
Purdue	20	15	35	21	21	42	-	77
ISU	21	10	31	7	16	23	-	54
Purdue	18	27	35	20	20	40	-	85
Harvard	13	8	21	24	18	42	-	63
Purdue	24	16	40	19	16	35	-	75
FSU	19	15	34	20	22	42	-	76
Purdue	18	9	27	19	25	44	-	71
Okla. St.	13	19	32	12	21	33	-	65
Purdue	23	24	47	21	19	40	-	87
Syracuse	18	11	29	21	28	49	-	78
Purdue	15	18	33	22	8	30	13	76
MSU	19	11	30	11	22	33	8	71
Purdue	23	15	38	23	13	36	-	74
Maryland	20	15	35	22	20	42	-	77
Purdue								
Illinois St.								
Purdue								
Texas A&M								
Purdue								
Iowa								
Purdue								
Wisconsin								
Purdue								
Penn State								
Purdue								
Michigan								
Purdue								
NU								
Purdue								
Nebraska								
Purdue								
Minnesota								
Purdue								
Illinois								
Purdue								
Ohio State								
Purdue								
Indiana								
Purdue								
Rutgers								
Purdue								
NU								
Purdue								
MSU								
Purdue								
Indiana								
Purdue								
Penn State								
Purdue								
Minnesota								
Purdue								
Purdue								
Purdue								
Total	215	179	394	215	186	401	13	808
Averages	21.5	17.9	39.4	21.5	18.6	40.1	-	80.8
Opp. Total	156	135	291	177	188	365	8	664
Averages	15.6	13.5	29.1	17.7	18.8	36.5	8	66.4

TEAM GAME-BY-GAME COMPARISON

P | | **10**

2022-23 PURDUE WOMEN'S BASKETBALL GAME NOTES

TEAM STATISTICS BREAKDOWN

All Games	Record	FG-FGA	FG%	3P-3PA	3%	FT-FTA	FT%	Off.	Def.	Tot.	Avg.	F	DQ	Ast.	TO	Blk.	Stl.	Pts.	Avg.
All Games	8-2	291-577	.504	76-210	.362	150-205	.732	86	299	385	38.5	166	1	176	168	37	76	808	80.8
		243-646	.376	69-220	.314	109-168	.649	124	209	333	33.3	188	1	127	152	22	78	664	66.4
Home	5-1	182-349	.521	44-123	.358	93-129	.721	49	171	220	36.7	90	1	108	93	24	51	501	83.5
		144-383	.376	41-129	.318	60-83	.723	72	126	198	33.0	118	0	77	98	12	42	389	64.8
Away	1-0	26-58	.448	7-21	.333	17-20	.850	11	39	50	50.0	21	0	17	30	6	6	76	76.0
		25-71	.352	7-22	.318	14-24	.583	12	18	30	30.0	19	1	18	16	3	14	71	71.0
Neutral	2-1	83-170	.488	25-66	.379	40-56	.714	26	89	115	38.3	55	0	51	45	7	19	231	77.0
		74-192	.385	21-69	.304	35-61	.574	40	65	105	35.0	51	0	32	38	7	22	204	68.0
Won	8-0	239-468	.511	57-163	.350	124-168	.738	70	249	319	39.9	134	1	145	131	30	60	659	82.4
		183-509	.360	54-175	.309	91-139	.655	97	167	264	33.0	149	1	99	123	18	60	511	63.9
Lost	0-2	52-109	.477	19-47	.404	26-37	.703	16	50	66	33.0	32	0	31	37	7	16	149	74.5
		60-137	.438	15-45	.333	18-29	.621	27	42	69	34.5	39	0	28	29	4	18	153	76.5

Big Ten	Record	FG-FGA	FG%	3P-3PA	3%	FT-FTA	FT%	Off.	Def.	Tot.	Avg.	F	DQ	Ast.	TO	Blk.	Stl.	Pts.	Avg.
All Games	1-1	52-105	.495	14-41	.341	32-41	.780	16	62	78	39.0	34	0	31	52	10	16	150	75.0
		55-143	.385	17-47	.362	21-33	.636	27	34	61	30.5	39	1	34	31	3	25	148	74.0
Home	0-1	26-47	.553	7-20	.350	15-21	.714	5	23	28	28.0	13	0	14	22	4	10	74	74.0
		30-72	.417	10-25	.400	7-9	.778	15	16	31	31.0	20	0	16	15	0	11	77	77.0
Away	1-0	26-58	.448	7-21	.333	17-20	.850	11	39	50	50.0	21	0	17	30	6	6	76	76.0
		25-71	.352	7-22	.318	14-24	.583	12	18	30	30.0	19	1	18	16	3	14	71	71.0

Non-Conference Record	Record	FG-FGA	FG%	3P-3PA	3%	FT-FTA	FT%	Off.	Def.	Tot.	Avg.	F	DQ	Ast.	TO	Blk.	Stl.	Pts.	Avg.
All Games	7-1	239-472	.506	62-169	.367	118-164	.720	70	237	307	38.4	132	1	145	116	27	60	658	82.3
		188-503	.374	52-173	.301	88-135	.652	97	175	272	34.0	149	0	93	121	19	53	516	64.5

Current Streak	Record	FG-FGA	FG%	3P-3PA	3%	FT-FTA	FT%	Off.	Def.	Tot.	Avg.	F	DQ	Ast.	TO	Blk.	Stl.	Pts.	Avg.
Overall	0-1	26-47	.553	7-20	.350	15-21	.714	5	23	28	28.0	13	0	14	22	4	10	74	74.0
		30-72	.417	10-25	.400	7-9	.778	15	16	31	31.0	20	0	16	15	0	11	77	77.0

Month	Record	FG-FGA	FG%	3P-3PA	3%	FT-FTA	FT%	Off.	Def.	Tot.	Avg.	F	DQ	Ast.	TO	Blk.	Stl.	Pts.	Avg.
November	7-1	239-472	.506	62-169	.367	118-164	.720	70	237	307	38.4	132	1	145	116	27	60	658	82.3
		188-503	.374	52-173	.301	88-135	.652	97	175	272	34.0	149	0	93	121	19	53	516	64.5
December	1-1	52-105	.495	14-41	.341	32-41	.780	16	62	78	39.0	34	0	31	52	10	16	150	75.0
		55-143	.385	17-47	.362	21-33	.636	27	34	61	30.5	39	1	34	31	3	25	148	74.0

January																			
February																			
March																			

Ranked/UR	Record	FG-FGA	FG%	3P-3PA	3%	FT-FTA	FT%	Off.	Def.	Tot.	Avg.	F	DQ	Ast.	TO	Blk.	Stl.	Pts.	Avg.
vs. Ranked																			
vs. Unranked	8-1	265-530	.500	69-190	.363	135-184	.734	81	276	357	39.7	153	1	162	146	33	66	734	81.6
		213-574	.371	59-195	.303	102-159	.642	109	193	302	33.6	168	1	111	137	22	67	587	65.2

5-Game	Record	FG-FGA	FG%	3P-3PA	3%	FT-FTA	FT%	Off.	Def.	Tot.	Avg.	F	DQ	Ast.	TO	Blk.	Stl.	Pts.	Avg.
1-5	5-0	157-297	.529	42-104	.404	69-100	.690	41	145	186	37.2	76	1	99	67	15	44	425	85.0
		108-301	.359	32-104	.308	49-69	.710	54	106	160	32.0	96	0	63	83	13	29	297	59.4
6-10	3-2	134-280	.479	34-106	.321	81-105	.771	45	154	199	39.8	90	0	77	101	22	32	383	76.6
		135-345	.391	37-116	.319	60-99	.606	70	103	173	34.6	92	1	64	69	9	49	367	73.4

11-15																			
16-20																			
21-25																			
26-30																			
31-35																			
36-40																			

Postseason	Record	FG-FGA	FG%	3P-3PA	3%	FT-FTA	FT%	Off.	Def.	Tot.	Avg.	F	DQ	Ast.	TO	Blk.	Stl.	Pts.	Avg.
Overall																			
BIG Tourney																			
NCAA																			

2022-23 PURDUE WOMEN'S BASKETBALL GAME NOTES

INDIVIDUAL HIGHS

Stat	Purdue High	Purdue Low	Opp. High	Opp. Low
Points	100 SIUE (11/17/2022)	71 vs Oklahoma St. (N) (11/26/2022)	78 Syracuse (11/30/2022)	54 Indiana St. (11/20/2022)
Field Goals Made	35 2x last SIUE (11/17/2022)	23 vs Oklahoma St. (N) (11/26/2022)	30 2x last Maryland (12/08/2022)	20 2x last Indiana St. (11/20/2022)
Field Goal Attempts	69 Murray St. (11/13/2022)	47 Maryland (12/08/2022)	77 Syracuse (11/30/2022)	52 Murray St. (11/13/2022)
Field Goal Percentage	.607 (34-56) vs Harvard (N) (11/24/2022)	.419 (26-62) vs Florida St. (N) (11/25/2022)	.462 (30-65) vs Florida St. (N) (11/25/2022)	.317 (20-63) Indiana St. (11/20/2022)
3-Pointers Made	12 vs Florida St. (N) (11/25/2022)	3 Syracuse (11/30/2022)	10 Maryland (12/08/2022)	4 Marshall (11/10/2022)
3-Pointers Attempted	29 Marshall (11/10/2022)	17 2x last Syracuse (11/30/2022)	28 vs Oklahoma St. (N) (11/26/2022)	18 Marshall (11/10/2022)
3-Point Percentage	.474 (9-19) Indiana St. (11/20/2022)	.176 (3-17) Syracuse (11/30/2022)	.400 (10-25) Maryland (12/08/2022)	.222 (4-18) Marshall (11/10/2022)
Free Throws Made	25 SIUE (11/17/2022)	8 Marshall (11/10/2022)	15 Syracuse (11/30/2022)	6 Indiana St. (11/20/2022)
Free Throws Attempted	36 SIUE (11/17/2022)	12 Murray St. (11/13/2022)	26 vs Oklahoma St. (N) (11/26/2022)	8 Indiana St. (11/20/2022)
Free Throw Percentage	.917 (11-12) Murray St. (11/13/2022)	.571 (8-14) Marshall (11/10/2022)	.778 (7-9) 2x last Maryland (12/08/2022)	.500 (13-26) vs Oklahoma St. (11/26/2022)
Rebounds	50 at Michigan St. (12/05/2022)	28 Maryland (12/08/2022)	38 2x last Syracuse (11/30/2022)	27 Murray St. (11/13/2022)
Assists	25 Murray St. (11/13/2022)	12 vs Oklahoma St. (N) (11/26/2022)	18 at Michigan St. (12/05/2022)	7 Syracuse (11/30/2022)
Steals	14 SIUE (11/17/2022)	4 Syracuse (11/30/2022)	14 at Michigan St. (12/05/2022)	2 Murray St. (11/13/2022)
Blocks	6 2x last at Michigan St. (12/05/2022)	1 vs Harvard (N) (11/24/2022)	4 2x last vs Florida St. (N) (11/25/2022)	0 2x last Maryland (12/08/2022)
Turnovers	30 at Michigan St. (12/05/2022)	7 Murray St. (11/13/2022)	25 SIUE (11/17/2022)	12 4x last Syracuse (11/30/2022)
Fouls	21 2x last at Michigan St. (12/05/2022)	13 2x last Maryland (12/08/2022)	30 SIUE (11/17/2022)	13 Murray St. (11/13/2022)

INDIVIDUAL HIGHS

Stat	Purdue Ind. High	Opponent Ind. High
Points	31 Lasha Petree vs Syracuse (11/30/2022)	26 Teisha Hyman vs Syracuse (11/30/2022)
Field Goals Made	13 Lasha Petree vs Syracuse (11/30/2022)	11 Teisha Hyman vs Syracuse (11/30/2022)
Field Goals Attempted	21 Lasha Petree vs Syracuse (11/30/2022)	23 2x last Teisha Hyman vs Syracuse (11/30/2022)
3-Pointers Made	5 2x last Madison Layden vs Florida St. (N) (11/25/2022)	5 Naomie Alnatas vs Oklahoma St. (N) (11/26/2022)
3-Pointers Attempted	11 Cassidy Hardin vs Marshall (11/10/2022)	11 Naomie Alnatas vs Oklahoma St. (N) (11/26/2022)
Free Throws Made	8 2x last Ava Learn vs Oklahoma St. (N) (11/26/2022)	7 Kamaria McDaniel at Michigan St. (12/05/2022)
Free Throws Attempted	10 Ava Learn vs Oklahoma St. (N) (11/26/2022)	10 Kamaria McDaniel at Michigan St. (12/05/2022)
Rebounds	13 Jeanae Terry vs Harvard (N) (11/24/2022)	14 Makayla Timpson vs Florida St. (N) (11/25/2022)
Assists	12 Jeanae Terry vs Indiana St. (11/20/2022)	5 3x last Diamond Miller/Shyanne Sellers vs Maryland (12/08/2022)
Steals	4 3x last Jeanae Terry vs Harvard (N) (11/24/2022)	5 Anna McKendree vs Indiana St. (11/20/2022)
Blocks	4 Caitlyn Harper vs Marshall (11/10/2022)	2 3x last Gabby Elliott at Michigan St. (12/05/2022)

MARGINS OF VICTORY/DEFEAT

	1	2	3	4	5	6	7	8	9	10	11	12	13	14	15	16	17	18	19	20	21+
Purdue					1				1			1									4
Opponent	1																				
When Leading											When Trailing										
Largest Margin of Victory	42 SIUE (11/17/2022)										1 Florida State (11/25/2022)										
Largest Overall Lead	42 SIUE (11/17/2022)										8 Oklahoma State (11/26/2022)										
Largest Halftime Lead	33 SIUE (11/17/2022)										5 Oklahoma State (11/26/2022)										
Largest Lead in a Loss	10 Florida State (11/25/2022)										8 Oklahoma State (11/26/2022)										
Largest Halftime Lead in a Loss	6 Florida State (11/25/2022)										5 Oklahoma State (11/26/2022)										
Largest Purdue Run	12 2x last Indiana St. (11/20/2022)										15 Oklahoma State (11/26/2022)										

RESULTS/LEADERS

Date	P / O	Opponent	W/L	Score	High Scorer	High Rebounds	High Assists	High Steals	High Blocks	Attend
N6	- / -	Purdue NW	W	98-67	22 - Harper	6 - Harper	7 - Layden	2 - 3 Tied	2 - Harper, Hardin	2,740
N10	- / -	Marshall	W	73-61	17 - Harper	10 - Terry	10 - Terry	3 - Layden	4 - Harper	2,058
N13	- / -	Murray State	W	90-61	23 - Petree	10 - Terry	10 - Terry	2 - Harper	2 - Harper	2,866
N17	- / -	SIUE	W	100-58	29 - Ellis	7 - Terry	4 - 3 Tied	4 - Terry/Smith	1 - Petree/Learn	1,861
N20	- / -	Indiana State	W	77-54	18 - Hardin	7 - Layden	12 - Terry	2 - Hard/Ellis	1 - Smith/Woltman	3,065
N24	Cancun	Harvard	W	85-63	23 - Petree	13 - Terry	8 - Terry	4 - Terry	1 - Terry	200
N25	Cancun	Florida State	L	76-75	15 - Petree/Layden	12 - Terry	8 - Terry	2 - Terry/Petree	1 - 3 Tied	248
N26	Cancun	Oklahoma State	W	71-65	20 - Petree	7 - Terry	6 - Terry	3 - Layden	1 - 3 Tied	136
N30	B1G/ACC	Syracuse	W	87-78	31 - Petree	8 - Harper	6 - Terry	2 - Terry	2 - Petree, Woltman	2,521
D5	B1G	Michigan State	W	76-71	18 - Petree	10 - Woltman	8 - Terry	2 - Terry	3 - Petree	3,015
D8	B1G	Maryland	W	77-74	18 - Ellis	6 - Hardin	6 - Terry	3 - Terry	2 - Petree, Layden	3,007
D11	- / -	Illinois State								
D21		Texas A&M								
D29	B1G	Iowa								
J1	B1G	Wisconsin								
J7	B1G	Penn State								
J10	B1G	Michigan								
J14	B1G	Northwestern								
J18	B1G	Nebraska								
J21	B1G	Minnesota								
J26	B1G	Illinois								
J29	B1G	Ohio State								
F5	B1G	Indiana								
F9	B1G	Rutgers								
F12	B1G	Northwestern								
F15	B1G	Michigan State								
F19	B1G	Indiana								
F22	B1G	Penn State								
F26	B1G	Minnesota								
M1		Big Ten Tournament								

2022-23 PURDUE WOMEN'S BASKETBALL GAME NOTES

THE LAST TIME

TEAM SCORING (GAME)		TEAM REBOUNDS		CONTINUED	
Won by 40+:	42 (80-38) at Ball State (11/7/18)	Had 20+ Rebound Margin:	20 (50-30) vs. Michigan State (12/4/22)	Five Players in Double Figures:	Karissa McLaughlin (23), Kayana Traylor (15), Ae'Rianna Harris (13), Dominique Oden (12), Jenelle Grant (11) vs. Illinois (1/17/20)
Won by 40+ (Big Ten):	43 (88-45) vs. Nebraska (1/26/17)	Had 25+ Rebound Margin:	30 (55-25) vs. USC Upstate (11/17/16)		
Lost by 20+:	29 (88-59) vs. No. 8 Maryland (2/25/21)	Outrebounded by 20+:	24 (50-26) vs. No. 8 Maryland (2/25/21)		
Lost by 30+:	37 (83-46) at No. 12 Maryland (1/10/21)	Outrebounded by 25+:	28 (28-56) at Notre Dame (12/29/13)		
Scored 90+:	90 vs. Murray State (11/13/22)			10+Points in 10 Straight Games:	10, Lasha Petree (11/10/22-Present)
Scored 90+ (Big Ten):	91 at Penn State (12/20/20)	TEAM ASSISTS		10+Points in 20 Straight Games:	35, Shereka Wright (11/29/01 - 12/29/02)
Scored 100+:	100 vs. SIUE (11/17/22)	Had 25:	25 vs. Murray State (11/13/22)	10+Points in 30 Straight Games:	35, Shereka Wright (11/29/01 - 12/29/02)
Scored 100+ (Big Ten):	110 (110-51) at Michigan (3/12/94)	Had 30:	31 vs. Incarnate Word (12/10/15)		
Scored 40 or Fewer:	40 (40-86) vs. Connecticut (11/24/18)	Had Five or Fewer:	5 at Indiana (3/6/21)	INDIVIDUAL DOUBLE-DOUBLES	
Scored 50 or Fewer:	49 (62-49) vs. Michigan (2/11/21)			Double-Double:	10 rebs, 10 assts, Jeanae Terry vs. Murray State (11/13/22)
Scored 50 or Fewer and Won:	48 (48-46) at IUPUI (3/15/18)	TEAM TURNOVERS		Points-Rebounds:	11-17, Jeanae Terry vs. Illinois (2/17/22)
Allowed 90+:	100 at Ohio State (2/18/21)	Committed 10 or Fewer:	7 vs. Murray State (11/13/22)	Points-Assists:	19-11 Karissa McLaughlin at Wisconsin (12/31/18)
Allowed 90+ (Big Ten):	100 at Ohio State (2/18/21)	Committed 20+:	22 vs. Maryland (12/8/22)	Points-Steals:	27-12, Joy Holmes vs. Minnesota (1/13/89)
Allowed 100+:	100 at Ohio State (2/18/21)	Forced 10 or Fewer:	8 at Ohio State (2/18/21)	Points-Blocks:	12-11, Danielle Campbell vs. Butler (11/17/07)
Allowed 50 or Fewer:	50, at Ohio State (12/28/19)	Forced 20+:	25 vs. SIUE (11/17/22)	Freshman:	10-11 ast, Karissa McLaughlin vs. PSU (1/28/18)
Allowed 40 or Fewer:	38 at Ball State (11/7/18)			Non-Point:	10 reb, 10 ast, Jeanae Terry vs. Murray State (11/13/22)
		TEAM CLOSE GAMES		20-10 Game:	21 pts, 12 rebs, Ae'Rianna Harris vs. PSU (1/26/20)
TEAM SCORING (HALF)		One-Point Games:	L, 76-75 vs. Florida State (11/25/22)	30-10 Game:	30 pts, 10 reb, Stephanie White vs. Washington (3/14/98)
Scored 60 in the First Half:	68 vs. Kent State (12/8/90)	Two-Point or less Games:	L, 54-52, at Wisconsin (2/13/22)	20-20 Game:	29 pts, 20 reb, Joy Holmes at Wisconsin (1/27/91)
Scored 60 in the Second Half:	60 vs. South Alabama (12/27/94)	Three-Point or less Games:	L, 77-74 vs. Maryland (12/8/22)	Consecutive Double-Doubles:	2, Jeanae Terry (11/10-13/22)
Scored 15 Points or Less:	15 (1st) vs. No. 18 Indiana (1/14/21)	Back-to-Back Games Decided by Three Points or Less:		in Three Straight Games:	4, Fatou Diagne, (1/18-1/31)
Scored 20 Points or Less:	17 (2nd) at Wisconsin (2/13/22)	L, 63-65 (OT) at Rutgers (1/16/19); W 56-53 vs. Indiana (1/20/19)		in Five Straight Games:	9, Whitney Bays (12/20/14 - 1/19/15)
Allowed 50+:	50 (2nd) at Maryland (12/8/21)	Last Second Shot to Win:	Jeanae Terry, 2, vs. Georgia Tech (12/1/21)	Two Players with a Double-Double:	11 pts, 12 reb, Fatou Diagne
Allowed 15 Points or Less:	15 (1st) at Wisconsin (2/13/22)		Jeanae Terry, 2, vs. Rutgers (1/3/22)		15 pts, 10 reb, Ae'Rianna Harris, vs. Michigan State (3/5/20)
Allowed 20 Points or Less:	19 (1st) vs. SIUE (11/17/22)	Lost on a Last Second Shot:	Shyanne Sellers, 3-pt vs. Maryland (12/8/22)	Three Players with a Double-Double:	Ae'Rianna Harris (14 pts, 17 rebs) & Tamara Farquhar (13 pts, 14 rebs), vs. Western Illinois (11/17/20)
TEAM SCORING (QUARTER)		TEAM OVERTIME		INDIVIDUAL TRIPLE-DOUBLES	
Scored 30+:	31 (3rd) vs. Buffalo (12/9/20)	Overtime Game:	W, 76-71 vs. Michigan State (12/4/22)	Triple-Double:	10 pts, 11 rebs, 12 assts - Jeanae Terry - vs. Minnesota (1/27/22)
Scored 25+:	25 (4th) vs. Oklahoma State (11/26/22)	Double Overtime Game:	L, 73-82 vs. South Carolina (12/16/18)	Before that	11 pts, 12 rebs, 10 assts - Jeanae Terry - vs. Miami (12/19/21)
Scored 10 Points or Less:	8 (4th) vs. Michigan State (12/4/22)	Triple Overtime Game:	W, 82-75 vs. Nebraska (2/12/12)	Before that	12 pts, 11 rebs, 11 blks - Danielle Campbell - vs. Butler (11/17/07)
Scored 5 Points or Less:	0 (2nd) vs. Florida State (11/27/21)	Consecutive Overtime Games:	W, 90-88 at Minnesota (1/22/15); L, 71-79 vs. Ohio State (1/25/15)	Before that	20 pts, 11 rebs, 10 assts - Stephanie White - vs. Indiana (1/22/99)
Allowed 30+:	32 (4th) vs. Penn State (2/9/22)				
Allowed 25+:	28 (4th) vs. Syracuse (11/30/22)	TEAM COMEBACKS		INDIVIDUAL FIELD GOALS	
Allowed 10 Points or Less:	8 (2nd) vs. Harvard (11/24/22)	Came Back from 10+ Down to Win:	W, 66-61 vs. Florida State (11/27/21) (Down 37-26, 8:20, 3rd Quarter)	Made 13 Field Goals:	13, Lasha Petree vs. Syracuse (11/30/22)
Allowed 5 Points or Less:	2 (1st) at Wisconsin (2/13/22)	Came Back from 15+ Down to Win:	W, 81-79 (OT) at Michigan (2/1/18; down 72-56 w/ 6:48 left in the 4th)	Made 15 Field Goals:	15, Shereka Wright at Michigan (2/17/02)
TEAM SHOOTING		TEAM RANKED OPPONENTS		Attempted 20 Field Goals:	21 Lasha Petree vs. Syracuse (11/30/22)
Shot 65% or Higher:	.735 (36-59) vs. Penn State (1/28/18)	Beat a Ranked Team:	#17 Florida State, 66-61 (11/27/21)	Attempted 25 Field Goals:	25, KK Houser vs. Penn State (1/30/14)
Shot 60% or Higher:	.607 (34-56) vs. Harvard (11/24/22)	Beat Back-to-Back Ranked Team:	#21 Rutgers, 47-33 (1/10/17)	Attempted 30 Field Goals:	33, MaChelle Joseph at Wisconsin (2/21/92)
Shot 55% or Higher:	.553 (26-47) vs. Maryland (12/8/22)		#18 Iowa, 76-70 (1/13/18)	INDIVIDUAL 3-POINTERS	
Shot 50% or Higher:	.553 (26-47) vs. Maryland (12/8/22)	Beat a Ranked Team on the Road:	#10 Maryland, 75-65 (2/15/18)	Made Six 3-Pointers:	6, Abbey Ellis at Illinois (1/20/22)
Shot 30% or Lower:	.296 (21-71) vs. Ohio State (12/5/21)	Beat a Top-10 Ranked Team:	#10 Maryland, 75-65 (2/15/18)	Made Seven 3-Pointers:	7, Cassidy Hardin vs. Denver (12/12/21)
Shot 25% or Lower:	.241 (13-54) at No. 12 Maryland (1/10/20)	Beat a Top-10 Ranked Team on the Road:	#10 Maryland, 75-65 (2/15/18)	Made Eight 3-Pointers:	9, Karissa McLaughlin vs. NU (2/17/19)
Shot 35% or Lower and Won:	.308 (20-65) vs. Wisconsin (1/21/21)		(2/15/18)	Attempted 12 3-Pointers:	12, Cassidy Hardin at Nebraska (1/30/22)
Opponent Shot 55% or Higher:	.582 (39-67) at Ohio State (2/18/21)	Beat a Top-5 Ranked Team:	#4 Texas A&M, 60-51 (12/4/11)	Attempted 13 3-Pointers:	14, Madison Layden vs. Ohio State (12/5/21)
Opponent Shot 50% or Higher:	.500 (25-50) vs. Ohio State (12/5/21)	Beat a Top-5 Ranked Team on the Road:		Made a 3-Pointer in 20 Straight Games:	24, Madison Layden (12/9/20-11/17/21)
Opponent Shot 30% or Lower:	.295 (23-78) vs. Michigan State (3/5/20)				23, Cassidy Hardin (3/10/21-2/4/22)
Opponent Shot 25% or Lower:	.242 (16-66) at Rutgers (2/19/17)				
TEAM 3-POINT SHOOTING		INDIVIDUAL SCORING		INDIVIDUAL FREE THROWS	
Made 10+:	11 vs. Marshall (11/10/22)	Scored 20 Points:	31 Lasha Petree vs. Syracuse (11/30/22)	Made 13 FTs:	14, Courtney Moses at Northwestern (1/26/12)
Made 12+:	15 at Illinois (1/20/22)	Scored 30 Points:	31, Lasha Petree vs. Syracuse (11/30/22)	Made 15 FTs:	15, Ukari Figgs vs. Washington (3/14/98)
Made 15+:	15 vs. Central Michigan (12/28/13), at Illinois (1/20/22)	Scored 35 Points:	38, Brittany Rayburn at Minnesota (1/12/12)	Attempted 16 FTs:	18, Brittany Rayburn vs. Gardner-Webb (12/21/09)
Made 0:	0 vs. Valparaiso (12/6/20)	Scored 40 Points:	41, Katie Gearlds at Wisconsin (2/18/07)	Attempted 18 FTs:	18, Brittany Rayburn vs. Gardner-Webb (12/21/09)
Attempted 25+:	29 vs. Marshall (11/10/22)	Scored 20 Points in Back-to-Back Games:	Lasha Petree	Attempted 20 FTs:	20, Shereka Wright at Northwestern (2/15/04)
Attempted 30+:	30 at Rutgers (2/20/22)	Scored 20 Points in Three Straight Games:	20 vs. Oklahoma State (11/26/22), 31 vs. Syracuse (11/30/22)		
Attempted Five or Less:	4 vs Boston College (12/3/15)				
Shot 50%+:	.652 (15-23) at Illinois (1/20/22)		28 vs. Penn State (1/26/20), 22 at Michigan State (1/30/20), 24 vs. No. 18 Indiana (2/3/20)	INDIVIDUAL STEALS	
Shot 60%+:	.652 (15-23) at Illinois (1/20/22)	Two Players w/ 20+:	22, Dominique Oden & 28, Karissa McLaughlin at Michigan State (1/30/20)	Grabbed Five Steals:	6, Madison Layden, at Rutgers (2/20/22)
TEAM FREE THROW SHOOTING		Three Players w/ 20+:	Whitney Bays (24), KK Houser (21), Liza Clemons (20) & Courtney Moses (20) vs. Central Michigan (12/28/13)	Grabbed Six Steals:	6, Madison Layden, at Rutgers (2/20/22)
Made 25+:	25 vs. SIUE (11/17/22)			Grabbed Seven Steals:	8, FahKara Malone vs. Indiana (3/7/08)
Made 30+:	32 vs. DePaul (11/21/10)	Four Players w/ 20+:	Whitney Bays (24), KK Houser (21), Liza Clemons (20)	Grabbed Eight Steals:	8, FahKara Malone vs. Indiana (3/7/08)
Made Five or Less:	2 at Northwestern (2/24/22)				
Made All Attempted:	7-7 at No. 5 Indiana (2/6/22)				
Attempted 30+:	36 vs. SIUE (11/17/22)				
Attempted 40+:	41 vs. Minnesota (1/18/04)				
Attempted 10 or Less:	3 at Northwestern (2/24/22)				
Attempted Five or Less:	3 at Northwestern (2/24/22)				

THE LAST TIME (CONTINUED)

INDIVIDUAL REBOUNDS

Grabbed 15 Rebounds: 17, Jeanae Terry vs. Illinois (2/17/22)
 Grabbed 16 Rebounds: 17, Jeanae Terry vs. Illinois (2/17/22)
 Grabbed 17 Rebounds: 17, Jeanae Terry vs. Illinois (2/17/22)
 Grabbed 18 Rebounds: 18, Fatou Diagne vs. Penn State (1/31/21)
 Grabbed 19 Rebounds: 19, Whitney Bays vs. Ohio State (1/25/15)
 Grabbed 20 Rebounds: 20, Joy Holmes at Wisconsin (1/27/91)
 Grabbed Eight Off. Rebounds: 9, Jeanae Terry at Wisconsin (2/13/22)
 Grabbed 12 Defensive Rebounds: 14, Ae'Rianna Harris
 vs. Western Illinois (11/17/19)

10+ Rebounds in Three Straight Games:

3, Ae'Rianna Harris (11/17/19-11/29/19)

Two Players with 10+ Rebounds in a Game: Tamara Farquhar (14) &
 Ae'Rianna Harris (17) vs. Western Illinois (11/17/19)

Three Players 10+ Rebounds in a Game:

Bridget Perry (11), Whitney Bays (11) &
 Liza Clemons (13) vs. Northwestern (2/11/15)

INDIVIDUAL ASSISTS

Dished Out 10 Assists: 12, Jeanae Terry vs. Indiana State (11/20/22)
 Dished Out 11 Assists: 12, Jeanae Terry vs. Indiana State (11/20/22)
 Dished Out 12 Assists: 12, Jeanae Terry vs. Indiana State (11/20/22)

Dished Out 5+ Assists in Five Straight Games:

6, Jeanae Terry (1/20/22 - 2/6/22)

Dished Out 10+ Assists in Two Straight Games:

Jeanae Terry vs. Marshall (11/10/22) & Murray State (11/14/22)

INDIVIDUAL MINUTES

Played a Complete Game: Madison Layden vs. Michigan State (3/3/22)
 Played at Least 40 Minutes: Jeanae Terry vs. Michigan State (12/4/22)
 Played Every Minute of an Overtime Game: Dominique Oden (45)
 Karissa McLaughlin (45) at Rutgers (1/16/19)
 Freshman Played 40 Minutes:
 Madison Layden (40) vs. Rutgers (2/14/21)
 Freshman Played a Complete Game:
 Madison Layden (40) vs. Rutgers (2/14/21)
 Played Consecutive Complete Games:
 Kayana Traylor, 2 vs. Michigan (2/11/21)

INDIVIDUAL FOULS

Technical Foul - Player: Tamara Farquhar, vs. Northwestern (12/17/20)
 Technical Foul - Coach: Katie Gearlds vs. SIUE (11/17/22)
 Fouled Out: Lasha Petree vs. Marshall (11/10/22)
 Two Players Fouled Out:
 Ra Shaya Kyle, Fatou Diagne vs. Michigan (2/11/21)
 Three Players Fouled Out: Tamara Farquhar, Ae'Rianna Harris
 & Dominique Oden vs. South Carolina (12/16/18 - 2 OT)

INDIVIDUAL BLOCKED SHOTS

Posted Five Blocks: 7, Ae'Rianna Harris vs. Michigan State (3/5/20)
 Posted Six Blocks: 7, Ae'Rianna Harris vs. Michigan State (3/5/20)
 Posted Seven Blocks: 7, Ae'Rianna Harris vs. Michigan State (3/5/20)
 Posted Eight Blocks: 9, Ae'Rianna Harris at South Carolina (12/15/19)
 Blocked 5+ Shots in Back-to-Back Games: Ae'Rianna Harris
 vs. UT Martin, 5 (12/18/17), Saint Mary's, 5 (12/20/17)
 & at Rutgers, 7 (12/28/17)

CAREER STAT TRACKER (SEASON/CAREER) *TOTAL INCLUDES PREVIOUS SCHOOL

Name	Double-Doubles	10+ Points	20+ Points	13FG	2+ 3FGs	10+ Rebounds	5+ Assists	3+ Blocks	3+ Steals	Complete Game
2 - Holzer	/	/	/	/	/	/	/	/	/	/
3 - Smith	/	3 (3-0) / 8 (6-2)	/	4 (3-1) / 14 (7-7)	1 (1-0) / 5 (2-3)	/	/	/	1 (1-0) / 4 (4-0)	/
4 - Rudini	/	/	/	/	/	/	/	/	/	/
5 - Hardin	/	4 (3-1) / 22 (16-6)	/	8 (7-1) / 83 (49-34)	6 (5-1) / 48 (33-15)	/	/	/	/	/
10 - Terry	2 (2-0) / 12* (5-0)	2 (2-0) / 29* (8-2)	/ 3*	/	/	4 (3-1) / 17* (6-4)	9 (8-1) / 44* (19-10)	/ 1*	3 (3-0) / 17* (7-1)	/
11 - Petree	/	10 (9-1) / 87* (9-1)	4 (4-0) / 33* (4-0)	10 (9-1) / 99* (9-1)	4 (4-0) / 59* (4-0)	/	/	1 (1-0) / 21* (1-0)	1 (1-0) / 24* (1-0)	/
14 - Learn	/	1 (1-0) / 3 (3-0)	/	/	/	/	/	/	/	/
23 - Ellis	/ 2*	6 (5-1) / 59* (15-12)	1 (1-0) / 18* (2-0)	7 (6-1) / 61* (15-10)	4 (4-0) / 36* (10-3)	/	/	/	/	/
30 - Potts	/	/	/	/	/	/	/	/	/	/
31 - Stoddard	/	/	/	/	/	/	/	/	/	/
33 - Layden	/	4 (3-1) / 33 (20-13)	/	8 (7-1) / 54 (28-26)	4 (3-1) / 35 (19-16)	/	3 (3-0) / 11 (6-5)	/	2 (2-0) / 17 (9-8)	/
34 - Harper	/	5 (5-0) / 70* (5-0)	/	3 (3-0) / 13* (3-0)	1 (1-0) / 18* (1-0)	/	/	1 (1-0) / 14* (1-0)	/	/
35 - Woltman	/	/	/	/	/	1 (1-0) / 3 (3-0)	/	/	/	/

2022-23 PURDUE WOMEN'S BASKETBALL GAME NOTES

AINHOA HOLZER

2

Height - 5-9 | **Position** - Guard | **Year** - Freshman | **Major** - Physics
Hometown - Martigny, Switzerland
Instagram - ainhoaholzer | **Twitter** - ainhoaholzer



	Season High	Career High	(*prior school)
Points	-	-	-
Rebounds	-	-	-
Assists	-	-	-
Steals	-	-	-
Blocks	-	-	-
Field Goals	-	-	-
3-Pointers	-	-	-
Free Throws	-	-	-
Minutes	-	-	-

HOLZER QUICK HITS

- Will miss the entire season due to a knee injury sustained in the penultimate game of the 2022 Swiss Basketball League regular season
- Named Sixth Woman and Most Improved Player of the 2021-22 Swiss Basketball League season
- Played four seasons in the Swiss Basketball League
- Called up for the U18 European Championships in 2019 and the U20 Swiss National Team in 2021 for the European Challengers and 2023 European Championships

JAYLA SMITH

3

Height - 6-0 | **Position** - Guard | **Year** - Sophomore | **Major** - Business
Hometown - Indianapolis, Ind. | **High School** - Lawrence North
Instagram - s.jaylasmith | **Twitter** - _JaylaSmith | **TikTok** - s.jaylasmith



	Season High	Career High
Points	16 vs. Marshall, 11/10/22	16, 2x last vs. Marshall, 11/10/22
Rebounds	5, Murray State, 11/13/22	7, 2x last at Indiana 2/6/22
Assists	4, vs. SIUE, 11/17/22	4, vs. SIUE, 11/17/22
Steals	4, vs. SIUE, 11/17/22	4 2x last, vs. SIUE, 11/17/22
Blocks	1 3x last, vs. Indiana St., 11/20/22	3, at Indiana 2/6/22
Field Goals	6 2x last vs. Syracuse, 11/30/22	6, 3x last vs. Syracuse, 11/30/22
3-Pointers	3 vs. Marshall, 11/10/22	4, at Nebraska, 1/30/22
Free Throws	3, vs. SIUE, 11/17/22	3 2x last, vs. SIUE, 11/17/22
Minutes	28 vs. Marshall, 11/10/22	28 vs. Marshall, 11/10/22

SMITH QUICK HITS

- Primary substitute as a freshman with one start
- Knocked down a quartet of 3-pointers against Nebraska last season to set career high with 16 points
- 2021 Indiana Miss Basketball, 10th in program history
- Won the 2020 Indiana 3A State Championship, over Madison Layden's Northwestern, hitting 8 3-pointers
- No. 49 player in the nation and No. 1 in Indiana by MaxPreps
- 3-time First Team All-State selection

SEASON	GP-GS	MIN/AVG	FG-FGA	FG%	3FG-FGA	3FG%	FT-FTA	FT%	OFF	DEF	TOT	AVG	PF-FO	AST	TO	BLK	STL	PTS	AVG
2021-22	30-1	473/15.8	54-140	.386	16-55	.291	16-26	.615	13	39	52	1.7	25-0	21	29	11	22	140	4.7
2022-23	10-0	178/17.8	28-60	.467	6-20	.300	10-20	.500	5	14	19	1.9	10-0	13	16	3	11	72	7.2
TOTAL	40-1	651/16.3	82-200	.410	22-75	.293	26-46	.565	18	53	71	1.8	35-0	34	45	14	33	212	5.3

KATE RUDINI

4

Height - 5-9 | **Position** - Guard | **Year** - Freshman | **Major** - Interior Design
Hometown - Trumbull, Conn. | **High School** - Saint Joseph
Instagram - katerudini | **TikTok** - _katerudini



	Season High	Career High	(*prior school)
Points	-	-	-
Rebounds	1, Murray State, 11/13/22	1, Murray State, 11/13/22	
Assists	-	-	-
Steals	-	-	-
Blocks	-	-	-
Field Goals	-	-	-
3-Pointers	-	-	-
Free Throws	-	-	-
Minutes	2, Murray State, 11/13/22	2, Murray State, 11/13/22	

RUDINI QUICK HITS

- Joined the squad in the fall of 2022 as a walk-on
- Connecticut All-State as a senior, after leading Saint Joseph to state runner-up honors

SEASON	GP-GS	MIN/AVG	FG-FGA	FG%	3FG-FGA	3FG%	FT-FTA	FT%	OFF	DEF	TOT	AVG	PF-FO	AST	TO	BLK	STL	PTS	AVG
2022-23	3-0	4/1.5	0-0	.000	0-0	.000	0-0	.000	0	1	1	0.3	0-0	0	0	0	0	0	0.0

CASSIDY HARDIN

5

Height - 5-10 | **Position** - Guard | **Year** - Fifth Year | **Major** - Honors Biochemistry (May '22)
Hometown - Center Grove, Ind. | **High School** - Center Grove
Instagram - cass_hardin | **TikTok** - casshardin5



	Season High	Career High
Points	18, vs. Indiana St., 11/20/22	25 vs. Denver, 12/12/21
Rebounds	6, vs. Maryland, 12/8/22	8 vs. Minnesota, 1/27/22
Assists	3, vs. Maryland, 12/8/22	5, 3x last vs. North Alabama, 12/21/21
Steals	2, vs. Indiana St., 11/20/22	3 2x last vs. Denver, 12/12/21
Blocks	-	1, 10x last at Indiana, 2/6/22
Field Goals	5, vs. Indiana St., 11/20/22	7 vs. Denver, 12/12/21
3-Pointers	5, vs. Indiana St., 11/20/22	7 vs. Denver, 12/12/21
Free Throws	3, vs. Indiana St., 11/20/22	4 vs. Denver, 12/12/21
Minutes	39 vs. Marshall, 11/10/22	43 vs. Indiana, 1/16/22

HARDIN QUICK HITS

- Deferred starting medical school to return for fifth and final season in 2022-23
- One of three players in program history to play in parts of five seasons
- 176 of 203 career field goals made are 3-pointers
- Holds the third longest 3-point streak in history at 23 games
- Has indoor court at home
- Three-time academic All-Big Ten
- Indiana Doubles Tennis champion in 2017

SEASON	GP-GS	MIN/AVG	FG-FGA	FG%	3FG-FGA	3FG%	FT-FTA	FT%	OFF	DEF	TOT	AVG	PF-FO	AST	TO	BLK	STL	PTS	AVG
2018-19	32-3	421/13.2	25-109	.229	24-97	.247	8-10	.800	7	26	33	1.0	25-0	35	20	2	5	82	2.6
2019-20	29-8	494/17.0	43-121	.355	37-105	.352	2-2	1.000	5	45	50	1.7	27-0	29	28	2	15	125	4.3
2020-21	19-0	231/12.2	18-62	.290	15-54	.278	3-4	.750	6	17	23	1.2	21-0	8	14	0	4	54	2.8
2021-22	32-31	993/31.0	91-257	.354	78-233	.335	18-24	.750	6	75	81	2.5	74-2	50	36	7	23	278	8.7
2022-23	10-10	250/25.0	26-62	.419	22-55	.400	6-8	.750	1	28	29	2.9	14-0	13	5	0	5	80	8.0
TOTAL	122-52	2389/19.6	203-611	.332	176-544	.324	37-48	.771	25	191	216	1.8	161-2	135	103	11	52	619	5.1

2022-23 PURDUE WOMEN'S BASKETBALL GAME NOTES

JEANAE TERRY

10

Height - 5-11 | **Position** - Guard | **Year** - Senior | **Major** - Sociology
Hometown - Detroit, Mich. | **High School** - Wayne Memorial | **Previous** - Illinois
Instagram - saucy__nae | **Twitter** - basquetb_nae | **TikTok** - saucytiktok10



	Season High	Career High	(*prior school)
Points	17, vs. SIUE, 11/17/22	28, at Wisconsin, 1/31/21*	
Rebounds	13 vs. Harvard, 11/24/22	17, 2x last vs. Illinois, 2/17/22	
Assists	12, vs. Indiana St., 11/20/22	12 3x last, vs. Indiana St., 11/20/22	
Steals	4, 2x last vs. Harvard, 11/24/22	5, 4x last at Nebraska, 1/30/22	
Blocks	2, at Michigan State, 12/4/22	4, vs. Chicago State, 11/5/19*	
Field Goals	6, vs. SIUE, 11/17/22	9, vs. Penn State, 1/28/21*	
3-Pointers	-	3, 3x last vs. Ohio State, 1/7/21*	
Free Throws	5, 3x last, vs. Maryland, 12/8/22	11, at Wisconsin, 1/31/21*	
Minutes	41, at Michigan State, 12/4/22	41, at Michigan State, 12/4/22	

SEASON	GP-GS	MIN/AVG	FG-FGA	FG%	3FG-FGA	3FG%	FT-FTA	FT%	OFF	DEF	TOT	AVG	PF-FO	AST	TO	BLK	STL	PTS	AVG
2019-20	30-11	693/23.1	65-225	.289	15-57	.263	40-66	.606	34	79	113	3.8	55-1	91	50	17	35	185	6.2
2020-21	23-23	690/30.0	89-226	.394	15-58	.259	54-74	.730	48	131	179	7.8	48-1	101	96	6	41	247	10.7
2021-22	32-32	949/29.6	88-215	.409	3-21	.143	51-74	.689	66	157	223	7.0	80-2	183	100	14	41	230	7.2
2022-23	10-10	305/30.5	25-54	.463	0-4	.000	27-39	.692	18	62	80	8.0	21-0	78	27	5	21	77	7.7
PURDUE	42-42	1254/29.9	113-269	.420	3-25	.120	78-113	.690	84	219	303	7.2	101-2	261	127	19	62	307	7.3
TOTAL	95-76	2637/27.8	267-720	.371	33-140	.236	172-253	.680	166	429	595	6.3	204-4	453	273	42	138	739	7.8

TERRY QUICK HITS

- 25th in program history in career assists at Purdue
- First Boilermaker ever with a non-point double-double
- Earned All-Big Ten honorable mention last year
- Only Boilermaker (men or women) in history to record multiple triple-doubles in a season and a career
- Went 2-for-3 on game-winning shots in 2021-22
- Joined Stephanie White as the only Boilermaker to ever record over 150 assists and 200 rebounds in a season
- Is in her second season as a captain at Purdue
- Played two seasons at Illinois
- Shot 34.1% from the field over first two years
- Two-time Class A All-State honoree

LASHA PETREE

11

Height - 6-0 | **Position** - Guard | **Year** - Fifth Year | **Major** - Master's Management
Hometown - Detroit, Mich. | **High School** - Arbor Prep | **Previous** - Bradley & Rutgers
Instagram - lashapetree | **Twitter** - la3ha | **TikTok** - la3ha



	Season High	Career High	(*prior school)
Points	31 vs. Syracuse, 11/30/22	36, vs. Indiana St. 01/05/20*	
Rebounds	8, at Michigan State, 12/4/22	12 at Evansville 01/11/19*	
Assists	3, 2x last Oklahoma State, 11/26/22	6 at Drake 02/20/20*	
Steals	3, vs. SIUE, 11/17/22	6 vs Chicago St. 12/28/18*	
Blocks	3, at Michigan State, 12/4/22	6, 2x last, vs Loyola Chicago 01/23/21*	
Field Goals	13 vs. Syracuse, 11/30/22	13 2x last vs. Syracuse, 11/30/22	
3-Pointers	3, 3x last, vs. Maryland, 12/8/22	6, vs North Dakota St. 12/05/19*	
Free Throws	4 vs. Syracuse, 11/30/22	10, 2x last vs Texas 03/22/21*	
Minutes	34, at Michigan State, 12/4/22	40, 4x last vs. SIU, 2/27/20*	

SEASON	GP-GS	MIN/AVG	FG-FGA	FG%	3FG-FGA	3FG%	FT-FTA	FT%	OFF	DEF	TOT	AVG	PF-FO	AST	TO	BLK	STL	PTS	AVG
2018-19	30-12	734/24.5	136-377	.361	56-160	.350	69-106	.651	33	67	100	3.3	62-1	22	59	31	46	397	13.2
2019-20	29-29	930/32.1	161-422	.382	67-208	.322	89-116	.767	22	95	117	4.0	65-0	46	102	50	46	478	16.5
2020-21	29-27	916/31.6	177-454	.390	53-185	.286	116-139	.835	21	90	111	3.8	72-0	43	76	63	40	523	18.0
2021-22	31-26	753/24.3	86-225	.382	38-101	.376	47-57	.825	28	70	98	3.2	58-0	32	61	22	35	257	8.3
2022-23	10-10	264/26.4	75-143	.524	16-46	.348	25-34	.735	9	29	38	3.8	31-1	10	35	9	9	191	19.1
TOTAL	129-104	3597/27.9	635-1621	.392	230-700	.329	346-452	.765	113	351	464	3.6	288-2	153	333	175	176	1846	14.3

PETREE QUICK HITS

- Made 100th career start against Harvard
- Ranks in the top 50 in active Division I 3-point leaders and 14th in career scoring
- Transferred to Purdue ahead of the 2022-23 season, utilizing her extra year of eligibility from the NCAA.
- Spent three seasons at Bradley and one at Rutgers
- Career honors include - Preseason Naismith Award Watch List (2020-21), MVC Preseason Player of the Year (2020-21), First-Team All-MVC (2020-21 & 2019-20), MVC Freshman of the Year (2018-19), MVC Sixth Player of the Year (2018-19)
- Was a finalist for Michigan Miss Basketball as a senior

AVA LEARN

14

Height - 6-1 | **Position** - Guard/Forward | **Year** - Sophomore | **Major** - Hospitality, Tourism
Hometown - Hyde Park, N.Y. | **High School** - Our Lady of Lourdes
Instagram - ava.learn | **Twitter** - AvaLearn | **TikTok** - ava.learn



	Season High	Career High
Points	12, vs. Oklahoma State, 11/26/22	13, at Rutgers, 2/20/22
Rebounds	4, 2x last vs. Oklahoma State, 11/26/22	4, 2x last vs. Oklahoma State, 11/26/22
Assists	2 vs. Syracuse, 11/30/22	2 vs. Syracuse, 11/30/22
Steals	1, 5x last, vs. Maryland, 12/8/22	2 vs. Wisconsin, 2/27/22
Blocks	1, vs. SIUE, 11/17/22	3, at Northwestern, 2/24/22
Field Goals	4, vs. Indiana St., 11/20/22	6, 2x last at Rutgers, 2/20/22
3-Pointers	-	-
Free Throws	8 vs. Oklahoma State, 11/26/22	8 vs. Oklahoma State, 11/26/22
Minutes	20 vs. Oklahoma State, 11/26/22	23 2x last at Illinois, 1/20/22

SEASON	GP-GS	MIN/AVG	FG-FGA	FG%	3FG-FGA	3FG%	FT-FTA	FT%	OFF	DEF	TOT	AVG	PF-FO	AST	TO	BLK	STL	PTS	AVG
2021-22	22-0	270/12.3	46-75	.613	0-7	.000	13-18	.722	26	34	60	2.7	59-4	6	17	13	8	105	4.8
2022-23	10-0	109/10.9	14-21	.667	0-1	.000	13-16	.813	8	14	22	2.2	14-0	5	9	1	5	41	4.1
TOTAL	32-0	379/11.8	60-96	.625	0-8	.000	26-34	.765	34	48	82	2.6	73-4	11	26	14	13	146	4.6

LEARN QUICK HITS

- Saw action off the bench in 22 games as a freshman
- Totaled 16.4 minutes per game over the final 16 games of the season, including a season-high 13 points at Rutgers
- No. 153 player in the nation and No. 41 guard by Girls Basketball Prep
- Four-time Poughkeepsie Journal All-Star

ABBEY ELLIS

23

Height - 5-6 | **Position** - Guard | **Year** - Senior | **Major** - Early Childhood Education
Hometown - Melbourne, Australia | **High School** - Our Lady of Mercy | **Previous** - Cal Poly
Instagram - _abbeyellis | **Twitter** - _abbeyellis | **TikTok** - abbeye_22



	Season High	Career High	(*prior school)
Points	29, vs. SIUE, 11/17/22	39, at San Diego St., 12/21/20*	
Rebounds	4 2x last, vs. Maryland, 12/8/22	10, vs. Long Beach St., 3/10/21*	
Assists	2, 3x last vs. Oklahoma State, 11/26/22	11, vs. Western Michigan, 11/14/21	
Steals	2, 2x last, vs. Indiana St., 11/20/22	8, vs. Santa Clara, 12/15/20*	
Blocks	-	1, 12x last at Wisconsin, 2/13/22	
Field Goals	9, vs. SIUE, 11/17/22	14, vs. UC Riverside, 1/23/20*	
3-Pointers	3, vs. SIUE, 11/17/22	8, at UC San Diego, 1/1/21*	
Free Throws	8, vs. SIUE, 11/17/22	10, at UC San Diego, 1/2/21*	
Minutes	29 vs. Oklahoma State, 11/26/22	44 vs. Indiana, 1/16/22	

SEASON	GP-GS	MIN/AVG	FG-FGA	FG%	3FG-FGA	3FG%	FT-FTA	FT%	OFF	DEF	TOT	AVG	PF-FO	AST	TO	BLK	STL	PTS	AVG
2019-20	29-29	950/32.8	165-392	.421	48-148	.324	73-87	.839	10	124	134	4.6	75-2	84	94	3	42	451	15.6
2020-21	24-23	753/31.4	127-322	.394	42-116	.362	71-80	.888	17	95	112	4.7	51-2	62	70	3	62	367	15.3
2021-22	32-31	928/29.0	128-275	.465	31-93	.333	82-96	.854	27	74	101	3.2	52-0	95	71	7	35	369	11.5
2022-23	9-0	197/21.8	35-61	.574	12-24	.500	30-34	.882	3	18	21	2.3	12-0	8	17	0	8	112	12.4
PURDUE	41-31	1124/27.4	163-336	.485	43-117	.368	112-130	.862	30	92	122	3.0	64-0	103	88	7	43	481	11.7
TOTAL	94-83	2828/30.1	455-1050	.433	133-381	.349	256-297	.862	57	311	368	3.9	190-4	249	252	13	147	1299	13.8

ELLIS QUICK HITS

- Earned All-Big Ten honorable mention last year
- 85.4% free throw clip last year was the 10th best in a single season in Purdue history
- Crossed the 1,000-point plateau in 2021-22 with a 19-point performance against Indiana at Mackey Arena.
- Developed a sizable following on TikTok @abbeye_22 with videos shared by Barstool Sports, Slam and more.
- Mother Libbie sends several ribbons in different colors for her to wear in games
- Father Martin was an Australian Rules Football official who refereed 244 matches in 13 years, including the 2001 Grand Final.

ADDISON
POTTS

30

Height - 6-0 | **Position** - Guard | **Year** - Freshman | **Major** - Management
Hometown - Fort Myers, Fla. | **High School** - South Fort Myers
Instagram - addison_potts | **Twitter** - addison_potts3 | **TikTok** - aapp_33



	Season High	Career High	(*prior school)
Points	2, vs. SIUE, 11/17/22	2, vs. SIUE, 11/17/22	
Rebounds	-		
Assists	2, Murray State, 11/13/22	2, Murray State, 11/13/22	
Steals	-		
Blocks	-		
Field Goals	-		
3-Pointers	-		
Free Throws	-		
Minutes	6, vs. SIUE, 11/17/22	6, vs. SIUE, 11/17/22	

SEASON	GP-GS	MIN/AVG	FG-FGA	FG%	3FG-FGA	3FG%	FT-FTA	FT%	OFF	DEF	TOT	AVG	PF-FO	AST	TO	BLK	STL	PTS	AVG
2022-23	4-0	18/4.4	1-3	.333	0-0	.000	0-1	.000	0	0	0	0.0	3-0	2	0	0	0	2	0.5

POTTS QUICK HITS

- 2022 Prep Girls Hoops Florida Miss Basketball
- 3-time First Team News-Press SWFL All-Area and Player of the Year finalist
- Won six varsity letters, starting high school career in seventh grade
- Totaled 2,098 points during prep career

LILLY
STODDARD

31

Height - 6-4 | **Position** - Forward | **Year** - Freshman | **Major** - Biomedical Sciences
Hometown - Crown Point, Ind. | **High School** - Crown Point
Instagram - lilly.stoddard | **Twitter** - lillystoddard00 | **TikTok** - lilly.stoddard



	Season High	Career High	(*prior school)
Points	2 vs. Harvard, 11/24/22	2 vs. Harvard, 11/24/22	
Rebounds	1, vs. Indiana St., 11/20/22	1, vs. Indiana St., 11/20/22	
Assists	-		
Steals	-		
Blocks	1, Murray State, 11/13/22	1, Murray State, 11/13/22	
Field Goals	1 vs. Harvard, 11/24/22	1 vs. Harvard, 11/24/22	
3-Pointers	-		
Free Throws	-		
Minutes	5 vs. Oklahoma State, 11/26/22	5 vs. Oklahoma State, 11/26/22	

SEASON	GP-GS	MIN/AVG	FG-FGA	FG%	3FG-FGA	3FG%	FT-FTA	FT%	OFF	DEF	TOT	AVG	PF-FO	AST	TO	BLK	STL	PTS	AVG
2022-23	4-0	13/3.2	1-4	.250	0-0	.000	0-0	.000	1	0	1	0.3	4-0	0	1	1	0	2	0.5

STODDARD QUICK HITS

- No. 87 player in the nation by ESPNW
- Won 2021 IHSAA 4A State Championship
- Finished with a 103-7 career record in high school
- Four-time conference and sectional champion
- Older Abby Stoddard plays at Butler

MADISON
LAYDEN

33

Height - 6-1 | **Position** - Guard | **Year** - Junior | **Major** - Selling & Sales Management
Hometown - Kokomo, Ind. | **High School** - Northwestern
Instagram - madison_layden | **Twitter** - madison_layden | **TikTok** - madison_layden



	Season High	Career High	(*prior school)
Points	15, 2x last vs. Florida State, 11/25/22	20, 2x last vs. Penn State, 2/9/22	
Rebounds	8, at Michigan State, 12/4/22	8 4x last, at Michigan State, 12/4/22	
Assists	6, Murray State, 11/13/22	7, vs. Michigan State - 1/3/21	
Steals	3 2x last vs. Florida State, 11/25/22	6, at Rutgers, 2/20/22	
Blocks	2, vs. Maryland, 12/8/22	2 4x last, vs. Maryland, 12/8/22	
Field Goals	6, Murray State, 11/13/22	8, 2x last vs. Penn State, 2/9/22	
3-Pointers	3, Murray State, 11/13/22	6, at Iowa - 1/18/21	
Free Throws	5, vs. Indiana St., 11/20/22	6, vs. Dayton, 11/20/21	
Minutes	38, at Michigan State, 12/4/22	44 vs. Indiana, 1/16/22	

SEASON	GP-GS	MIN/AVG	FG-FGA	FG%	3FG-FGA	3FG%	FT-FTA	FT%	OFF	DEF	TOT	AVG	PF-FO	AST	TO	BLK	STL	PTS	AVG
2020-21	23-21	729/31.7	70-163	.429	45-111	.405	15-20	.750	12	61	73	3.2	43-0	69	44	5	48	200	8.7
2021-22	29-28	986/34.0	117-337	.347	63-190	.332	40-47	.851	24	110	134	4.6	71-1	80	55	15	49	337	11.6
2022-23	10-10	321/32.1	25-71	.352	16-50	.320	13-15	.867	1	50	51	5.1	27-0	40	23	4	10	79	7.9
TOTAL	62-59	2036/32.8	212-571	.371	124-351	.353	68-82	.829	37	221	258	4.2	141-1	189	122	24	107	616	9.9

LAYDEN QUICK HITS

- Big Ten All-Freshman (2021), honorable mention (2022)
- One of six players to hit 45 3-pointers, dish out 65 assists and record 45 steals in each of the last two seasons (2020-21, 2021-22)
- Invited to the USA Basketball U19 World Cup Trials
- Tied freshman record with 7 3pts in a game at Iowa
- 2020 MaxPreps All-American, Indiana Gatorade Player of the Year and runner-up
- First in IHSAA history to lead three Final Fours in scoring
- Ranked 13th in IHSAA in career scoring and one of 46 2,000-point scorers in state history

CAITLYN
HARPER

34

Height - 6-2 | **Position** - Forward | **Year** - R-Senior | **Major** - Master's Management
Hometown - Hartland, Wisc. | **High School** - Arrowhead | **Previous** - Cal Baptist
Instagram - caitlynharper32 | **Twitter** - C_harp32 | **TikTok** - caitlynharper32



	Season High	Career High	(*prior school)
Points	17 2x last, Murray State, 11/13/22	30, at Utah Valley, 1/15/22*	
Rebounds	8 vs. Syracuse, 11/30/22	14, 3x last, vs. Chicago State*	
Assists	2, Murray State, 11/13/22	5, at UTRGV, 2/13/21*	
Steals	2, 2x last, vs. Maryland, 12/8/22	5, at Sam Houston State, 1/27/22*	
Blocks	4 vs. Marshall, 11/10/22	8, at Chicago State, 3/2/22*	
Field Goals	8, Murray State, 11/13/22	12, vs. Utah Valley, 2/26/22	
3-Pointers	2 vs. Marshall, 11/10/22	4, vs. Rice, 3/22/21*	
Free Throws	3 3x last vs. Syracuse, 11/30/22	10, vs. Sam Houston State, 3/10/22*	
Minutes	30 vs. Marshall, 11/10/22	41, at Chicago State, 3/2/22*	

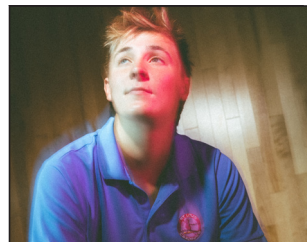
SEASON	GP-GS	MIN/AVG	FG-FGA	FG%	3FG-FGA	3FG%	FT-FTA	FT%	OFF	DEF	TOT	AVG	PF-FO	AST	TO	BLK	STL	PTS	AVG
2018-19	29-3	470/16.2	100-203	.493	11-52	.212	40-58	.690	36	84	120	4.1	49-0	23	38	21	11	251	8.7
2019-20	5-5	121/24.3	32-56	.571	1-2	.500	16-18	.889	13	32	45	9.0	17-0	7	10	10	2	81	16.2
2020-21	27-10	642/23.8	149-281	.530	27-70	.386	60-76	.789	62	140	202	7.5	67-0	35	50	34	31	385	14.3
2021-22	32-32	964/30.1	223-421	.530	29-95	.305	94-127	.740	36	153	189	5.9	68-0	40	58	51	41	569	17.8
2022-23	10-10	227/22.7	45-73	.616	4-10	.400	16-25	.640	11	30	41	4.1	17-0	4	21	9	4	110	11.0
TOTAL	103-60	2423/23.5	549-1034	.531	72-229	.314	226-304	.743	158	439	597	5.8	218-0	109	177	125	89	1396	13.6

HARPER QUICK HITS

- Joined Purdue in the spring of 2022 with two years of eligibility remaining
- 2022 WAC Player of the Year and CoSIDA All-American
- Led the WAC in scoring with 17.7 points per game
- In 2021, secured All-WAC Second Team, WAC Tournament MVP and WNIT All-Region awards
- Picked up All-Wisconsin honors consecutive years, with a first-team nod in 2018
- Younger sister Alaina plays at Grand Canyon

2022-23 PURDUE WOMEN'S BASKETBALL GAME NOTES

RICKIE WOLTMAN 35



Height - 6-4 | **Position** - Forward | **Year** - Senior | **Major** - Selling & Sales Management
Hometown - St. Louis, Mo. | **High School** - Incarnate Word
Instagram - slick_rick35 | **Twitter** - slick_rick_35 | **TikTok** - rickiew

	Season High	Career High
Points	9 vs. Harvard, 11/24/22	18 vs. Penn State, 2/9/22
Rebounds	10, at Michigan State, 12/4/22	11, 2x last vs. Penn State, 2/9/22
Assists	1, 2x last, at Michigan State, 12/4/22	3 at Rutgers, 2/20/22
Steals	1 3x last, at Michigan State, 12/4/22	2 2x last at Indiana, 2/6/22
Blocks	2 vs. Syracuse, 11/30/22	4 at Illinois State, 11/17/21
Field Goals	3, Murray State, 11/13/22	7 vs. North Alabama, 12/21/21
3-Pointers	-	-
Free Throws	4, vs. Indiana St., 11/20/22	4, vs. Indiana St., 11/20/22
Minutes	26, at Michigan State, 12/4/22	33, vs. West Virginia, 11/25/21

WOLTMAN QUICK HITS

- Resurgent junior season, started last 22 games of the year
- Played 20.3 minutes per game last year, following just 4.9 in her first two campaigns
- No. 25 by ESPNW and No. 919 by USA Today
- Won three straight Missouri State Championships
- 2019 WBCA All-America, Missouri All-State

SEASON	GP-GS	MIN/AVG	FG-FGA	FG%	3FG-FGA	3FG%	FT-FTA	FT%	OFF	DEF	TOT	AVG	PF-FO	AST	TO	BLK	STL	PTS	AVG
2019-20	19-0	91/4.8	8-14	.571	0-0	.000	1-3	.333	9	17	26	1.4	19-0	0	11	6	0	17	0.9
2020-21	13-0	65/5.0	5-11	.455	0-0	.000	3-3	1.000	2	9	11	0.8	10-0	2	3	2	2	13	1.0
2021-22	32-22	648/20.3	96-178	.539	0-0	.000	32-52	.615	47	118	165	5.2	80-1	13	41	34	10	224	7.0
2022-23	10-0	140/14.0	16-25	.640	0-0	.000	10-13	.769	11	27	38	3.8	13-0	3	9	5	3	42	4.2
TOTAL	74-22	945/12.8	125-228	.548	0-0	.000	46-71	.648	69	171	240	3.2	122-1	18	64	47	15	296	4.0

NEED TO KNOWS

	Favorite Basketball Shoe	Started Playing Basketball at Age	What Would You Do If you Didn't Play Basketball	Favorite Player To Watch	Favorite WNBA/NBA Team
Ainhua Holzer	Kobes	10	Play Piano	Kyrie Irving, Allen Iverson	Brooklyn Nets, Las Vegas Aces
Jayla Smith	Kobes	7	Volleyball	Tamika Catchings	2014 San Antonio Spurs
Kate Rudini	Anything Nike	5	Soccer	Ryan Arcidiacono	Boston Celtics
Cassidy Hardin	Zoom Freak 4	4	Softball	Steph Curry	Golden State Warriors
Jeanae Terry	Kobes	5	Be a Chef	Maya Moore	Detroit Pistons
Lasha Petree	Whatever Fits	7	Modeling	Kevin Durant	Whatever Team has KD
Ava Learn	Anything Nike	5	Dancing Ballet	Michael Jordan	Milwaukee Bucks
Abbey Ellis	Kobe Mamba Rage	6	No Clue	Sue Bird	Utah Jazz
Addison Potts	Paul Georges	6	Nothing, Literally Nothing	Steph Curry	Golden State Warriors
Lilly Stoddard	Nike GT Cut 2	5	Volleyball	Abby Stoddard (Sister)	Chicago Sky
Madison Layden	Paul George	3	Volleyball	Larry Bird	Indiana Pacers
Caitlyn Harper	Kobes	5	Softball	Kevin Durant or Giannis Antetokounmpo	Milwaukee Bucks
Rickie Woltman	Anything Nike	8	Golf, Softball	Kevin Durant	Boston Celtics

	Random Fact	Hobbies Outside of Basketball	Favorite Color	Three Things You Can't Live Without
Ainhua Holzer	Played piano for nine years, played in her own group	Reading, Baking, Stargazing	Blue	Basketball, Family, Coffee
Jayla Smith	Avid TikToker	Shopping, Sleeping, Family Time	Pink	Fried Chicken, Phone, Frooties
Kate Rudini	Interested in fashion photography	Art	Black	Family, Friends, Cat
Cassidy Hardin	Won state tennis title in high school	Reading, Watch Survivor, Throwing a Frisbee	Orange	Kindle, Family, Mike & Ikes
Jeanae Terry	Has a twin	Cooking, Fashion	Black	Family, Dog, Basketball
Lasha Petree	Can Juggle	Being Outside, Spending Time with Family, TikTok	Emerald Green	Blanket, Backpack, Headphones
Ava Learn	Was born in Virginia	Reading, Watching Movies, Cooking	Purple	Family, Friends, Travel
Abbey Ellis	Can do an incredible Stitch impression (Lilo & Stitch)	Napping, Watching Sports, Frisbee Golf	Purple	Socks, Phone, Coffee
Addison Potts	Enjoys going boating in the Gulf	Sleeping, Netflix, Shopping	Baby Pink	Phone, Water, Bed
Lilly Stoddard	Lettered four years in Volleyball	Hanging out with family and freinds	Black & Gold	Faith, Family, Basketball
Madison Layden	Can Juggle	Shopping	Pink	Family, Friends, Music
Caitlyn Harper	Is a coffee aficionado	Traveling, Coffee	Purple	Family, Friends, Coffee
Rickie Woltman	Can snap with all her fingers	Golf, Watching St. Louis Cardinals, Playing Games	Orange	Family, Friends, Sports

	Favorite Movie	Favorite Singer	Favorite Meal to Make	Dream Job	Dream Job as a Child
Ainhua Holzer	Interstellar	Lauryn Hill	Red Curry Chicken	Basketball Player/Astrophysicist	Astrophysicist
Jayla Smith	Like Mike	Beyonce	Steak & Potatoes	Own an NBA Franchise	WNBA Player
Kate Rudini	Tangled	Sza	Annie's Mac and Cheese	Interior Designer	Princess
Cassidy Hardin	Avengers: Endgame	Taylor Swift	Creamy Parmesan Chicken	Anesthesiologist	Doctor
Jeanae Terry	Lion King	Lil Baby	Salmon & Mashed Potatoes	Basketball Player	Golfer
Lasha Petree	Avatar	Lil Baby	Fried Tacos	Basketball Player	Dentist
Ava Learn	King Arthur Legend of the Sword	Adele	Cookies/Brownies	Working in Professional Sports	Rockstar
Abbey Ellis	Hidden Figures	Adele	Pasta	Child Psychologist	Zookeeper
Addison Potts	Rush Hour 2	Kevin Gates	Pasta	Basketball Player	Police Officer
Lilly Stoddard	Thor: Ragnarok	Black Eyed Peas	Chicken & Pasta	Orthopedic Surgeon	Orthodontist
Madison Layden		Justin Bieber	Tacos		Teacher
Caitlyn Harper	Bridesmaids	Rihanna/Adele	Salmon Tacos	NBA Front Office	Doctor
Rickie Woltman	Grown Ups	Luke Bryan/Jason Aldean	Mac n Cheese	Own a Sports Complex	Basketball Player

2022-23 PURDUE WOMEN'S BASKETBALL GAME NOTES

3 | Jayla Smith

2022-23	Min.	FG	3FG	FT	O-D-T	PF	Pts	A	To	S	B	+/-
PNW (ex)	26	3-5	0-1	6-6	1-0-1	1	12	2	2	2	0	14
Marshall	28	6-11	3-4	1-2	0-2-2	1	16	0	2	2	1	6
Murray St.	23	3-9	0-3	2-3	3-2-5	2	8	2	1	1	1	11
SIUE	25	2-6	0-1	3-5	1-3-4	2	7	4	3	4	0	33
Indiana St.	26	4-7	1-2	1-6	0-1-1	1	10	1	0	1	1	0
Harvard	19	3-7	1-4	0-0	0-2-2	1	7	2	3	2	0	6
FSU	9	1-2	1-2	0-0	0-0-0	2	3	1	0	0	0	-4
Okla. State	11	1-2	0-1	1-1	0-0-0	0	3	0	1	0	0	-5
Syracuse	12	2-4	0-1	2-3	1-1-2	0	6	1	1	0	0	-4
MSU	10	0-2	0-1	0-0	0-1-1	0	0	0	2	1	0	-10
Maryland												
Illinois State												
Texas A&M												
Iowa												
Wisconsin												
Penn State												
Michigan												
NU												
Nebraska												
Minnesota												
Illinois												
Ohio State												
Indiana												
Rutgers												
NU												
MSU												
Indiana												
Penn State												
Minnesota												

* Started

^Big Ten Tournament

4 | Kate Rudini

2022-23	Min.	FG	3FG	FT	O-D-T	PF	Pts	A	To	S	B	+/-
PNW (ex)	2	0-0	0-0	2-2	0-0-0	1	2	0	0	1	0	2
Marshall	DNP											
Murray St.	2	0-0	0-0	0-0	0-1-1	0	0	0	0	0	0	-1
SIUE	2	0-0	0-0	0-0	0-0-0	0	0	0	0	0	0	2
Indiana St.	1	0-0	0-0	0-0	0-0-0	0	0	0	0	0	0	-2
Harvard	DNP											
FSU	DNP											
Okla. State	DNP											
Syracuse	DNP											
MSU	DNP											
Maryland	DNP											
Illinois State												
Texas A&M												
Iowa												
Wisconsin												
Penn State												
Michigan												
NU												
Nebraska												
Minnesota												
Illinois												
Ohio State												
Indiana												
Rutgers												
NU												
MSU												
Indiana												
Penn State												
Minnesota												

* Started

^Big Ten Tournament

5 | Cassidy Hardin

2022-23	Min.	FG	3FG	FT	O-D-T	PF	Pts	A	To	S	B	+/-
PNW (ex)	25	3-7	3-7	0-0	0-6-6	1	9	2	1	0	2	17
Marshall*	39	3-11	3-11	0-0	0-4-4	1	9	1	0	1	0	15
Murray St.*	21	1-2	1-1	0-0	0-3-3	0	3	2	0	0	0	26
SIUE*	23	1-3	0-2	2-2	0-1-1	2	4	2	0	0	0	17
Indiana St.*	24	5-7	5-7	3-4	0-3-3	1	18	0	1	2	0	21
Harvard*	26	3-4	3-4	0-0	0-2-2	2	9	2	0	1	0	27
FSU*	15	4-9	3-8	0-0	0-4-4	3	11	0	2	0	0	-3
Okla. State*	25	0-2	0-2	1-2	0-2-2	2	1	0	0	0	0	4
Syracuse*	19	1-6	1-5	0-0	0-0-0	2	3	2	0	0	0	3
MSU*	29	4-11	3-9	0-0	1-3-4	1	11	1	1	0	0	5
Maryland*	31	4-7	3-6	0-0	0-6-6	0	11	3	1	1	0	3
Illinois State												
Texas A&M												
Iowa												
Wisconsin												
Penn State												
Michigan												
NU												
Nebraska												
Minnesota												
Illinois												
Ohio State												
Indiana												
Rutgers												
NU												
MSU												
Indiana												
Penn State												
Minnesota												

* Started

^Big Ten Tournament

10 | Jeanae Terry

2022-23	Min.	FG	3FG	FT	O-D-T	PF	Pts	A	To	S	B	+/-
PNW (ex)	25	4-6	0-0	3-4	0-5-5	4	11	5	4	1	0	22
Marshall*	32	2-2	0-0	1-2	4-6-10	2	5	10	3	2	0	20
Murray St.*	30	2-4	0-0	5-5	1-9-10	1	9	10	0	1	0	42
SIUE*	27	6-9	0-0	5-9	2-5-7	2	17	4	1	4	0	31
Indiana St.*	26	0-2	0-0	0-0	1-5-6	2	0	12	2	1	0	33
Harvard*	31	3-6	0-2	1-3	1-12-13	2	7	8	5	4	1	7
FSU*	38	2-9	0-1	2-2	4-8-12	3	6	8	4	2	0	4
Okla. State*	30	4-8	0-0	3-5	3-4-7	2	11	6	1	0	1	4
Syracuse*	27	2-3	0-0	3-4	0-4-4	1	7	6	2	2	1	-1
MSU*	41	2-8	0-1	2-3	1-7-8	3	6	8	4	2	2	5
Maryland*	26	2-3	0-0	5-6	1-2-3	3	9	6	5	3	0	4
Illinois State												
Texas A&M												
Iowa												
Wisconsin												
Penn State												
Michigan												
NU												
Nebraska												
Minnesota												
Illinois												
Ohio State												
Indiana												
Rutgers												
NU												
MSU												
Indiana												
Penn State												
Minnesota												

* Started

^Big Ten Tournament

2022-23 PURDUE WOMEN'S BASKETBALL GAME NOTES

11 | Lasha Petree

2022-23	Min.	FG	3FG	FT	O-D-T	PF	Pts	A	To	S	B	+/-
PNW (ex)	23	4-9	2-4	4-4	1-1-2	3	14	1	3	2	1	15
Marshall*	21	5-12	1-5	2-3	1-0-1	5	13	0	3	0	0	-3
Murray St.*	25	9-15	3-5	2-2	1-3-4	4	23	0	0	0	0	18
SIUE*	23	7-13	1-4	2-3	0-1-1	0	17	0	1	3	1	18
Indiana St.*	15	6-9	2-4	3-4	0-1-1	3	17	1	5	0	0	11
Harvard*	26	9-14	3-5	2-3	1-2-3	3	23	0	3	0	0	25
FSU*	32	6-19	1-7	2-4	1-4-5	3	15	3	3	2	1	5
Okla. State*	32	8-15	1-4	3-4	3-3-6	3	20	3	2	2	0	5
Syracuse*	30	13-21	1-3	4-5	0-7-7	4	31	1	8	1	2	1
MSU*	34	7-14	2-5	2-2	2-6-8	3	18	2	8	1	3	6
Maryland*	29	5-11	1-4	3-4	0-2-2	3	14	0	2	0	2	-4
Illinois State												
Texas A&M												
Iowa												
Wisconsin												
Penn State												
Michigan												
NU												
Nebraska												
Minnesota												
Illinois												
Ohio State												
Indiana												
Rutgers												
NU												
MSU												
Indiana												
Penn State												
Minnesota												

* Started

^Big Ten Tournament

14 | Ava Learn

2022-23	Min.	FG	3FG	FT	O-D-T	PF	Pts	A	To	S	B	+/-
PNW (ex)	15	1-2	0-0	2-3	1-2-3	2	4	3	1	0	0	16
Marshall	5	0-1	0-0	0-0	2-0-2	1	0	0	0	1	0	-3
Murray St.	10	2-3	0-1	0-0	1-0-1	1	4	0	1	1	0	-8
SIUE	12	1-1	0-0	0-0	2-2-4	1	2	1	2	0	1	11
Indiana St.	14	4-4	0-0	0-0	0-2-2	2	8	0	0	1	0	4
Harvard	15	1-2	0-0	1-2	0-2-2	1	3	1	1	0	0	5
FSU	3	0-1	0-0	0-0	0-0-0	1	0	0	0	0	0	-2
Okla. State	20	2-2	0-0	8-10	1-3-4	3	12	0	0	0	0	4
Syracuse	13	2-4	0-0	2-2	1-2-3	0	6	2	1	0	0	9
MSU	12	1-2	0-0	0-0	0-2-2	2	2	1	3	1	0	5
Maryland	7	1-1	0-0	2-2	1-1-2	2	4	0	1	1	0	-2
Illinois State												
Texas A&M												
Iowa												
Wisconsin												
Penn State												
Michigan												
NU												
Nebraska												
Minnesota												
Illinois												
Ohio State												
Indiana												
Rutgers												
NU												
MSU												
Indiana												
Penn State												
Minnesota												

* Started

^Big Ten Tournament

23 | Abbey Ellis

2022-23	Min.	FG	3FG	FT	O-D-T	PF	Pts	A	To	S	B	+/-
PNW (ex)	6	0-0	0-0	2-2	0-0-0	0	2	1	0	0	0	3
Marshall	DNP											
Murray St.	19	1-3	1-2	2-2	0-2-2	2	5	1	3	0	0	-5
SIUE	18	9-11	3-4	8-8	0-2-2	0	29	0	0	2	0	27
Indiana St.	19	1-5	0-1	0-0	0-3-3	0	2	2	3	2	0	11
Harvard	21	3-6	1-2	3-3	0-0-0	1	10	2	0	0	0	12
FSU	29	4-6	2-2	4-4	1-1-2	2	14	1	1	1	0	-1
Okla. State	32	8-15	1-4	3-4	3-3-6	3	20	3	2	2	0	5
Syracuse	21	3-5	1-3	2-4	0-3-3	1	9	0	2	1	0	5
MSU	21	4-6	0-1	5-5	0-1-1	2	13	0	3	1	0	-6
Maryland*	26	7-12	2-5	2-4	1-3-4	2	18	1	4	0	0	1
Illinois State												
Texas A&M												
Iowa												
Wisconsin												
Penn State												
Michigan												
NU												
Nebraska												
Minnesota												
Illinois												
Ohio State												
Indiana												
Rutgers												
NU												
MSU												
Indiana												
Penn State												
Minnesota												

* Started

^Big Ten Tournament

30 | Addison Potts

2022-23	Min.	FG	3FG	FT	O-D-T	PF	Pts	A	To	S	B	+/-
PNW (ex)	6	0-1	0-0	0-0	0-1-1	1	0	0	2	0	0	9
Marshall	DNP											
Murray St.	5-0	0-0	0-0	0-0	0-0-0	1	0	2	0	0	0	1
SIUE	7	1-2	0-0	0-1	0-0-0	0	2	0	0	0	0	11
Indiana St.*	4	0-0	0-0	0-0	0-0-0	1	0	0	0	0	0	-9
Harvard	3	0-1	0-0	0-0	0-0-0	1	0	0	0	0	0	-3
FSU	DNP											
Okla. State	DNP											
Syracuse	DNP											
MSU	DNP											
Maryland	DNP											
Illinois State												
Texas A&M												
Iowa												
Wisconsin												
Penn State												
Michigan												
NU												
Nebraska												
Minnesota												
Illinois												
Ohio State												
Indiana												
Rutgers												
NU												
MSU												
Indiana												
Penn State												
Minnesota												

* Started

^Big Ten Tournament

2022-23 PURDUE WOMEN'S BASKETBALL GAME NOTES

31 | Lilly Stoddard

2022-23	Min.	FG	3FG	FT	O-D-T	PF	Pts	A	To	S	B	+/-
PNW (ex)	8	1-1	0-0	2-2	0-3-3	2	4	1	0	0	0	8
Marshall	DNP											
Murray St.	2-0	0-1	0-0	0-0	0-0-0	0	0	0	0	0	1	-3
SIUE	4	0-1	0-0	0-0	0-0-0	3	0	0	0	0	0	8
Indiana St.	3	0-1	0-0	0-0	1-0-1	0	0	0	1	0	0	-5
Harvard	5	1-1	0-0	0-0	0-0-0	1	2	0	0	0	0	-4
FSU	DNP											
Okla. State	DNP											
Syracuse	DNP											
MSU	DNP											
Maryland	DNP											
Illinois State												
Texas A&M												
Iowa												
Wisconsin												
Penn State												
Michigan												
NU												
Nebraska												
Minnesota												
Illinois												
Ohio State												
Indiana												
Rutgers												
NU												
MSU												
Indiana												
Penn State												
Minnesota												

* Started

^Big Ten Tournament

33 | Madison Layden

2022-23	Min.	FG	3FG	FT	O-D-T	PF	Pts	A	To	S	B	+/-
PNW (ex)	26	2-6	2-5	2-2	1-2-3	2	8	7		0	0	23
Marshall*	38	5-10	2-6	1-1	1-5-6	2	13	5	0	3	0	14
Murray St.*	30	6-13	3-7	0-0	0-1-1	3	15	6	0	0	0	32
SIUE*	26	1-6	1-5	0-0	0-5-5	3	3	4	1	0	0	18
Indiana St.*	30	2-8	1-5	5-6	0-7-7	2	10	4	2	1	0	19
Harvard*	27	0-2	0-1	0-0	0-3-3	2	0	5	2	0	0	18
FSU*	36	5-8	5-7	0-0	0-3-3	4	15	4	3	1	1	0
Okla. State*	29	2-9	2-8	0-0	0-6-6	3	6	2	4	3	1	3
Syracuse*	34	1-5	0-4	2-2	0-7-7	2	4	3	3	0	0	11
MSU*	37	2-6	1-3	4-4	0-8-8	4	9	3	4	0	0	8
Maryland	37	1-4	1-4	1-2	0-5-5	2	4	4	4	2	2	-5
Illinois State												
Texas A&M												
Iowa												
Wisconsin												
Penn State												
Michigan												
NU												
Nebraska												
Minnesota												
Illinois												
Ohio State												
Indiana												
Rutgers												
NU												
MSU												
Indiana												
Penn State												
Minnesota												

* Started

^Big Ten Tournament

34 | Caitlyn Harper

2022-23	Min.	FG	3FG	FT	O-D-T	PF	Pts	A	To	S	B	+/-
PNW (ex)	24	10-13	0-0	2-3	1-4-5	2	22	1	3	2	2	25
Marshall*	30	6-11	2-3	3-6	2-2-4	1	17	0	3	0	4	8
Murray St.*	24	8-14	1-2	0-0	2-3-5	3	17	2	1	2	2	40
SIUE*	23	6-7	0-1	3-4	1-4-5	1	15	0	4	0	0	13
Indiana St.*	21	3-7	0-0	0-0	0-1-1	2	6	0	1	0	0	20
Harvard*	20	7-8	0-0	1-2	0-2-2	1	15	1	2	0	0	11
FSU*	30	3-7	0-0	2-4	2-4-6	1	8	0	1	0	0	4
Okla. State*	20	2-5	0-2	0-0	0-5-5	2	4	0	2	0	1	-2
Syracuse*	24	3-5	0-1	3-3	3-5-8	3	9	1	2	0	1	8
MSU*	13	3-5	1-1	2-3	1-2-3	3	9	0	2	0	1	1
Maryland*	26	4-4	0-0	2-3	0-2-2	0	10	0	3	2	0	4
Illinois State												
Texas A&M												
Iowa												
Wisconsin												
Penn State												
Michigan												
NU												
Nebraska												
Minnesota												
Illinois												
Ohio State												
Indiana												
Rutgers												
NU												
MSU												
Indiana												
Penn State												
Minnesota												

* Started

^Big Ten Tournament

35 | Rickie Woltman

2022-23	Min.	FG	3FG	FT	O-D-T	PF	Pts	A	To	S	B	+/-
PNW (ex)	18	2-3	0-0	6-9	2-3-5	0	10	0	3	0	1	1
Marshall	10	0-1	0-0	0-0	0-2-2	0	0	0	0	1	0	3
Murray St.	15	3-5	0-0	0-0	1-2-3	1	6	0	1	0	1	-8
SIUE	14	1-3	0-0	2-4	2-3-5	1	4	0	1	1	0	21
Indiana St.	20	1-1	0-0	4-4	0-5-5	1	6	1	1	0	1	12
Harvard	12	4-5	0-0	1-1	1-4-5	0	9	1	0	0	0	6
FSU	10	1-1	0-0	1-2	1-0-1	0	3	0	0	0	1	-8
Okla. State	11	1-1	0-0	0-0	1-2-3	4	2	0	2	0	0	13
Syracuse	15	2-3	0-0	2-2	0-2-2	2	6	0	2	0	2	2
MSU	26	1-2	0-0	0-0	3-7-10	3	2	1	2	1	0	5
Maryland	11	2-3	0-0	0-0	2-0-2	1	4	0	0	0	0	-6
Illinois State												
Texas A&M												
Iowa												
Wisconsin												
Penn State												
Michigan												
NU												
Nebraska												
Minnesota												
Illinois												
Ohio State												
Indiana												
Rutgers												
NU												
MSU												
Indiana												
Penn State												
Minnesota												

* Started

^Big Ten Tournament



2022-23 Purdue Women's Basketball Combined Team Statistics All games

Page 1/1
as of Dec 09, 2022

Game Records

Record	Overall	Home	Away	Neutral
ALL GAMES	8-2	5-1	1-0	2-1
CONFERENCE	1-1	0-1	1-0	0-0
NON-CONFERENCE	7-1	5-0	0-0	2-1

Score by Periods

Team	1st	2nd	3rd	4th	OT	TOT
Purdue	215	179	215	186	13	808
Opponents	156	135	177	188	8	664

Team Box Score

No.	Player				Total		3-Point		F-Throw		Rebounds											
		GP-GS	MIN	AVG	FG-FGA	FG%	3FG-3FGA	3FG%	FT-FTA	FT%	OFF	DEF	TOT	AVG	PF	DQ	A	TO	BLK	STL	PTS	AVG
11	PETREE, Lasha	10-10	263:56	26.4	75-143	.524	16-46	.348	25-34	.735	9	29	38	3.8	31	1	10	35	9	9	191	19.1
23	ELLIS, Abbey	9-0	196:32	21.8	35-61	.574	12-24	.500	30-34	.882	3	18	21	2.3	12	0	8	17	0	8	112	12.4
34	HARPER, Caitlyn	10-10	227:04	22.7	45-73	.616	4-10	.400	16-25	.640	11	30	41	4.1	17	0	4	21	9	4	110	11.0
5	HARDIN, Cassidy	10-10	249:57	25.0	26-62	.419	22-55	.400	6-8	.750	1	28	29	2.9	14	0	13	5	0	5	80	8.0
33	LAYDEN, Madison	10-10	320:48	32.1	25-71	.352	16-50	.320	13-15	.867	1	50	51	5.1	27	0	40	23	4	10	79	7.9
10	TERRY, Jeanae	10-10	305:16	30.5	25-54	.463	0-4	.000	27-39	.692	18	62	80	8.0	21	0	78	27	5	21	77	7.7
3	SMITH, Jayla	10-0	177:34	17.8	28-60	.467	6-20	.300	10-20	.500	5	14	19	1.9	10	0	13	16	3	11	72	7.2
35	WOLTMAN, Rickie	10-0	140:18	14.0	16-25	.640	0-0	.000	10-13	.769	11	27	38	3.8	13	0	3	9	5	3	42	4.2
14	LEARN, Ava	10-0	108:42	10.9	14-21	.667	0-1	.000	13-16	.813	8	14	22	2.2	14	0	5	9	1	5	41	4.1
31	STODDARD, Lilly	4-0	12:56	3.2	1-4	.250	0-0	.000	0-0	.000	1	0	1	0.3	4	0	0	1	1	0	2	0.5
30	POTTS, Addison	4-0	17:32	4.4	1-3	.333	0-0	.000	0-1	.000	0	0	0	0.0	3	0	2	0	0	0	2	0.5
4	RUDINI, Kate	3-0	04:24	1.5	0-0	.000	0-0	.000	0-0	.000	0	1	1	0.3	0	0	0	0	0	0	0	0.0
Team											18	26	44					5				
Total		10	2025		291-577	.504	76-210	.362	150-205	.732	86	299	385	38.5	166	1	176	168	37	76	808	80.8
Opponents		10	2025		243-646	.376	69-220	.314	109-168	.649	124	209	333	33.3	188	1	127	152	22	78	664	66.4

Team Statistics

	PURDUE	OPP
Scoring	808	664
Points per game	80.8	66.4
Scoring margin	+14.4	-
Field goals-att	291-577	243-646
Field goal pct	.504	.376
3 point fg-att	76-210	69-220
3-point FG pct	.362	.314
3-pt FG made per game	7.6	6.9
Free throws-att	150-205	109-168
Free throw pct	.732	.649
F-Throws made per game	15.0	10.9
Rebounds	385	333
Rebounds per game	38.5	33.3
Rebounding margin	+5.2	-
Assists	176	127
Assists per game	17.6	12.7
Turnovers	168	152
Turnovers per game	16.8	15.2
Turnover margin	-1.6	-
Assist/turnover ratio	1.0	0.8
Steals	76	78
Steals per game	7.6	7.8
Blocks	37	22
Blocks per game	3.7	2.2
Winning streak	0	-
Home win streak	0	-
Attendance	15366	3015
Home games-Avg/Game	6-2561	1-3015
Neutral site-Avg/Game	-	3-195

Team Results

Date	Opponent		Score	Att.
11/10/2022	Marshall	W	73-61	2058
11/13/2022	Murray St.	W	90-61	2866
11/17/2022	SIUE	W	100-58	1861
11/20/2022	Indiana St.	W	77-54	3053
11/24/2022	vs Harvard	W	85-63	200
11/25/2022	vs Florida St.	L	75-76	248
11/26/2022	vs Oklahoma St.	W	71-65	136
11/30/2022	Syracuse	W	87-78	2521
12/05/2022	at Michigan St.	Wot	76-71	3015
12/08/2022	Maryland	L	74-77	3007



2022-23 Purdue Women's Basketball Combined Team Statistics In Conference games

Page 1/1
as of Dec 09, 2022

Game Records

Record	Overall	Home	Away	Neutral
ALL GAMES	1-1	0-1	1-0	0-0
CONFERENCE	1-1	0-1	1-0	0-0
NON-CONFERENCE	0-0	0-0	0-0	0-0

Score by Periods

Team	1st	2nd	3rd	4th	OT	TOT
Purdue	38	33	45	21	13	150
Opponents	39	26	33	42	8	148

Team Box Score

No.	Player				Total		3-Point		F-Throw		Rebounds											
		GP-GS	MIN	AVG	FG-FGA	FG%	3FG-3FGA	3FG%	FT-FTA	FT%	OFF	DEF	TOT	AVG	PF	DQ	A	TO	BLK	STL	PTS	AVG
11	PETREE, Lasha	2-2	62:36	31.3	12-25	.480	3-9	.333	5-6	.833	2	8	10	5.0	6	0	2	10	5	1	32	16.0
23	ELLIS, Abbey	2-0	46:60	23.5	11-18	.611	2-6	.333	7-9	.778	1	4	5	2.5	4	0	1	7	0	1	31	15.5
5	HARDIN, Cassidy	2-2	59:16	29.6	8-18	.444	6-15	.400	0-0	.000	1	9	10	5.0	1	0	4	2	0	1	22	11.0
34	HARPER, Caitlyn	2-2	38:23	19.2	7-9	.778	1-1	1.000	4-6	.667	1	4	5	2.5	3	0	0	5	1	2	19	9.5
10	TERRY, Jeanae	2-2	67:12	33.6	4-11	.364	0-1	.000	7-9	.778	2	9	11	5.5	6	0	14	9	2	5	15	7.5
33	LAYDEN, Madison	2-2	73:23	36.7	3-10	.300	2-7	.286	5-6	.833	0	13	13	6.5	6	0	7	8	2	2	13	6.5
3	SMITH, Jayla	2-0	21:36	10.8	2-6	.333	0-2	.000	2-3	.667	1	2	3	1.5	0	0	1	3	0	1	6	3.0
14	LEARN, Ava	2-0	19:10	9.6	2-3	.667	0-0	.000	2-2	1.000	1	3	4	2.0	4	0	1	4	0	2	6	3.0
35	WOLTMAN, Rickie	2-0	36:26	18.2	3-5	.600	0-0	.000	0-0	.000	5	7	12	6.0	4	0	1	2	0	1	6	3.0
Team											2	3	5					2				
Total		2	425		52-105	.495	14-41	.341	32-41	.780	16	62	78	39.0	34	0	31	52	10	16	150	75.0
Opponents		2	425		55-143	.385	17-47	.362	21-33	.636	27	34	61	30.5	39	1	34	31	3	25	148	74.0

Team Statistics

	PURDUE	OPP
Scoring	150	148
Points per game	75.0	74.0
Scoring margin	+1.0	-
Field goals-att	52-105	55-143
Field goal pct	.495	.385
3 point fg-att	14-41	17-47
3-point FG pct	.341	.362
3-pt FG made per game	7.0	8.5
Free throws-att	32-41	21-33
Free throw pct	.780	.636
F-Throws made per game	16.0	10.5
Rebounds	78	61
Rebounds per game	39.0	30.5
Rebounding margin	+8.5	-
Assists	31	34
Assists per game	15.5	17.0
Turnovers	52	31
Turnovers per game	26.0	15.5
Turnover margin	-10.5	-
Assist/turnover ratio	0.6	1.1
Steals	16	25
Steals per game	8.0	12.5
Blocks	10	3
Blocks per game	5.0	1.5
Winning streak	0	-
Home win streak	0	-
Attendance	3007	3015
Home games-Avg/Game	1-3007	1-3015
Neutral site-Avg/Game	-	0-0

Team Results

Date	Opponent		Score	Att.
12/05/2022	at Michigan St.	Wot	76-71	3015
12/08/2022	Maryland	L	74-77	3007

LAST TIME OUT



Official Basketball Box Score - Final

Maryland at Purdue

12/08/22 Mackey Arena, West Lafayette
2022-23 Women's Basketball

Game Time: 6:30 PM

Game Duration: 1:47

Attendance: 3,007

Officials: Brian Garland, Dee Kantner, Michael McConnell

Maryland - 77

Record: 8-3 (1-1)

NO.	Name	Min	FG M-A	3P M-A	FT M-A	Rebounds OR DR TOT	Fouls PF FD	TP	AS	TO	ST	Blocks BS BA	+/-
5	Brinae Alexander	F 23:46	4-9	3-6	0-0	1 2 3	4 1	11	0	1	1	0 2	-2
13	Faith Masonius	F 33:35	2-8	0-0	1-1	5 5 10	3 1	5	0	4	2	0 0	0
0	Shyanne Sellers	G 32:14	6-16	1-3	2-3	1 2 3	4 3	15	5	3	2	0 1	9
1	Diamond Miller	G 29:20	6-11	2-4	4-5	4 2 6	3 5	18	5	4	0	0 1	8
12	Elisa Pinzan	G 27:10	2-5	1-2	0-0	0 0 0	1 0	5	3	2	3	0 0	-5
3	Lavender Briggs	24:47	2-7	0-2	0-0	2 4 6	4 1	4	2	1	1	0 0	7
10	Abby Meyers	29:00	8-16	3-8	0-0	0 0 0	1 2	19	1	0	2	0 0	2
11	Gia Cooke	00:04	0-0	0-0	0-0	0 0 0	0 0	0	0	0	0	0 0	-2
24	Bri McDaniel	00:04	0-0	0-0	0-0	0 0 0	0 0	0	0	0	0	0 0	-2
Team						2 1 3		0		0			
Totals			30-72	10-25	7-9	15 16 31	20 13	77	16	15	11	0 4	3

Technical Fouls::NONE

Shooting By Period		
1 st	FG%	8-21 38.1%
	3PT%	3-7 42.9%
	FT%	1-1 100%
2 nd	FG%	7-19 36.8%
	3PT%	0-5 0.0%
	FT%	1-1 100%
3 rd	FG%	7-14 50.0%
	3PT%	3-4 75.0%
	FT%	5-7 71.4%
4 th	FG%	8-18 44.4%
	3PT%	4-9 44.4%
	FT%	0-0 0%
GM	FG%	30-72 41.7%
	3PT%	10-25 40.0%
	FT%	7-9 77.8%

Dead Ball Rebounds: 2, 3

Purdue - 74

Record: 8-2 (1-1)

NO.	Name	Min	FG M-A	3P M-A	FT M-A	Rebounds OR DR TOT	Fouls PF FD	TP	AS	TO	ST	Blocks BS BA	+/-
34	Caitlyn Harper	F 25:51	4-4	0-0	2-3	0 2 2	0 3	10	0	3	2	0 0	4
5	Cassidy Hardin	G 30:14	4-7	3-6	0-0	0 6 6	0 1	11	3	1	1	0 0	3
10	Jeanae Terry	G 26:09	2-3	0-0	5-6	1 2 3	3 5	9	6	5	3	0 0	4
11	Lasha Petree	G 28:27	5-11	1-4	3-4	0 2 2	3 2	14	0	2	0	2 0	-4
33	Madison Layden	G 36:12	1-4	1-4	1-2	0 5 5	2 1	4	4	4	2	2 0	-5
23	Abbey Ellis	25:53	7-12	2-5	2-4	1 3 4	2 5	18	1	4	0	0 0	1
3	Jayla Smith	09:53	0-2	0-1	0-0	0 1 1	0 1	0	0	2	1	0 0	-10
35	Rickie Woltman	10:28	2-3	0-0	0-0	2 0 2	1 1	4	0	0	0	0 0	-6
14	Ava Learn	06:53	1-1	0-0	2-2	1 1 2	2 1	4	0	1	1	0 0	-2
Team						0 1 1		0		0			
Totals			26-47	7-20	15-21	5 23 28	13 20	74	14	22	10	4 0	-3

Technical Fouls::NONE

Shooting By Period		
1 st	FG%	10-14 71.4%
	3PT%	1-3 33.3%
	FT%	2-2 100%
2 nd	FG%	5-15 33.3%
	3PT%	1-8 12.5%
	FT%	4-5 80%
3 rd	FG%	7-10 70.0%
	3PT%	3-4 75.0%
	FT%	6-10 60%
4 th	FG%	4-8 50.0%
	3PT%	2-5 40.0%
	FT%	3-4 75%
GM	FG%	26-47 55.3%
	3PT%	7-20 35.0%
	FT%	15-21 71.4%

Dead Ball Rebounds: 3, 4

	UMD	PUR
Biggest lead	4 (4 th 4:44)	8 (3 rd 3:35)
Best Scoring Run	8 (1 st 0:33)	8 (4 th 3:26)
Lead Changes	9	
Times Tied	5	
Time with Lead	04:21	31:12

Points from	UMD	PUR
Turnovers	25	19
Paint	28	34
Second Chance	17	6
Fast Breaks	15	2
Bench	23	26

Period by Period Scoring					
	1st	2nd	3rd	4th	TOT
UMD	20	15	22	20	77
PUR	23	15	23	13	74

2022-23 PURDUE WOMEN'S BASKETBALL GAME NOTES



PURDUE BOILERMAKERS

Overall - 8-2 | B1G - 1-1 | Streak - L1 | AP - RV | Coaches - - | NET - 44 | Home - 5-1 | Away - 1-0 | Neutral - 2-1 | Post - -

Offense - 80.8 | Defense - 66.4 | Scoring Margin - +14.4 | Field Goal% - .504 | Field Goal% Defense - .376 | 3-Pt.%(PG) - .362 (7.6)

Opp 3-Pt.%(PG) - .314 (6.9) | Rebounding - 38.5 | Rebound Margin - +5.2 | Assists - 17.6 | Turnovers - 16.8 | Turnover Margin - -1.6

SERIES HISTORY

Overall	4-5
At Home	1-3
On the Road	2-2
Neutral Site	1-0
Streak	Purdue - 1
Under Gearlds	1-0

2022-23 SCHEDULE

Opponent	Date/Result
Purdue NW	W, 98-67
Marshall	W, 73-61
Murray State	W, 90-61
SIUE	W, 100-58
Indiana State	W, 77-54
vs. Harvard (I)	W, 85-63
vs. Florida State (I)	L, 76-75
vs. Oklahoma State (I)	W, 71-65
Syracuse (2)	W, 87-78
at Michigan State*	W, 76-71
Maryland*	L, 77-74
Illinois State	D11
at Texas A&M	D21
at Iowa*	D29
Wisconsin*	J1
at Penn State*	J7
Michigan*	J10
at Northwestern*	J14
Nebraska*	J18
Minnesota*	J21
at Illinois*	J26
at Ohio State	J29
Indiana	F5
at Rutgers	F9
Northwestern	F12
Michigan State	F15
at Indiana	F19
Penn State	F22
at Minnesota	F26
Big Ten Tournament (4)	M1-5
1 - Cancun Challenge (Mexico)	
2 - Big Ten/ACC Challenge	
3 - Las Vegas Holiday Classic	
4 - BIG Tournament (Minneapolis)	

HEAD COACH KATIE GEARLDS

Purdue Record - 25-17 (2nd)
 Career Record - 253-67 (10th)
 Alma Mater - Purdue '07
 Highlights - 2x NAIA National Champ, 3x NAIA Coach of the Year, 8 years at Marian, 7th Overall to Seattle in 2007 Draft, Legend of Mackey, 2007 All-America

COACHING STAFF

Asso. Head Coach Beth Couture
 Assistant Coach Michael Scruggs
 Assistant Coach Alex Guyton

PRONUNCIATIONS

2 - Holzer - ah-NOAH
 14 - Learn - AA-va
 11 - Petree - LAY-sha pee-TREE
 4 - Rudini - rue-DEE-nee
 10 - Terry - Jah-NAY
 31 - Stoddard - STAH-dard
 AHC - Couture - COO-chur
 HC - Gearlds - Gerald's (soft-g)
 DoV - Hasser-Smith - LAKE-en

2 • Ainhua Holzer • Fr. • G • 5-9 • Martigny, Switzerland

GP/GS	MIN.	PPG	RPG	APG	STLS	BLKS	FG%	3P%	FT%
/									

LAST GAME: Did not play due to season-ending injury

3 • Jayla Smith • So. • G • 6-0 • Indianapolis, Ind. • Lawrence North

GP/GS	MIN.	PPG	RPG	APG	STLS	BLKS	FG%	3P%	FT%
10/0	17.8	7.2	1.9	1.3	11	3	.467	.300	.500

LAST GAME: 1 stl, 10 mins

4 • Kate Rudini • Fr. • G • 5-9 • Trumbull, Conn. • Saint Joseph

GP/GS	MIN.	PPG	RPG	APG	STLS	BLKS	FG%	3P%	FT%
3/0	1.5	0.0	0.3	0.0	0	0	.000	.000	.000

LAST GAME: Did not play

5 • Cassidy Hardin • 5th • G • 5-10 • Center Grove, Ind. • Center Grove

GP/GS	MIN.	PPG	RPG	APG	STLS	BLKS	FG%	3P%	FT%
10/10	25.0	8.0	2.9	1.3	5	0	.419	.400	.750

LAST GAME: 11 pts, 3 3pt, 6 rebs, 3 asts, 30 mins

10 • Jeanae Terry • Sr. • G • 5-11 • Detroit, Mich. • Wayne Memorial • Illinois

GP/GS	MIN.	PPG	RPG	APG	STLS	BLKS	FG%	3P%	FT%
10/10	30.5	7.7	8.0	7.8	21	5	.463	.000	.692

LAST GAME: 9 pts, 3 rebs, 6 asts, 3 stls, 5-6 ft, 26 mins

11 • Lasha Petree • 5th • G • 6-0 • Detroit, Mich. • Arbor Prep • Bradley • Rutgers

GP/GS	MIN.	PPG	RPG	APG	STLS	BLKS	FG%	3P%	FT%
10/10	26.4	19.1	3.8	1.0	9	9	.524	.348	.735

LAST GAME: 14 pts, 2 rebs, 2 blks, 29 mins

14 • Ava Learn • So. • G/F • 6-1 • Hyde Park, N.Y. • Our Lady of Lourdes

GP/GS	MIN.	PPG	RPG	APG	STLS	BLKS	FG%	3P%	FT%
10/0	10.9	4.1	2.2	0.5	5	1	.667	.000	.813

LAST GAME: 4 pts, 2 rebs, 1 stl, 7 mins

23 • Abbey Ellis • Sr. • G • 5-6 • Melbourne, Australia • Our Lady of Mercy • Cal Poly

GP/GS	MIN.	PPG	RPG	APG	STLS	BLKS	FG%	3P%	FT%
9/0	21.8	12.4	2.3	0.9	8	0	.574	.500	.882

LAST GAME: 18 pts, 4 rebs, 1 ast, 7-12 fg, 26 mins

30 • Addison Potts • Fr. • G • 6-0 • Fort Myers, Fla. • South Fort Myers

GP/GS	MIN.	PPG	RPG	APG	STLS	BLKS	FG%	3P%	FT%
4/0	4.4	0.5	0.0	0.5	0	0	.333	.000	.000

LAST GAME: Did not play

31 • Lilly Stoddard • Fr. • F • 6-4 • Crown Point, Ind. • Crown Point

GP/GS	MIN.	PPG	RPG	APG	STLS	BLKS	FG%	3P%	FT%
4/0	3.2	0.5	0.3	0.0	0	1	.250	.000	.000

LAST GAME: Did not play

33 • Madison Layden • Jr. • G • 6-1 • Kokomo, Ind. • Northwestern

GP/GS	MIN.	PPG	RPG	APG	STLS	BLKS	FG%	3P%	FT%
10/10	32.1	7.9	5.1	4.0	10	4	.352	.320	.867

LAST GAME: 4 pts, 5 rebs, 4 asts, 2 stls, 2 blks, 37 mins

34 • Caitlyn Harper • R-Sr. • F • 6-2 • Hartland, Wisc. • Arrowhead • Cal Baptist

GP/GS	MIN.	PPG	RPG	APG	STLS	BLKS	FG%	3P%	FT%
10/10	22.7	11.0	4.1	0.4	4	9	.616	.4000	.640

LAST GAME: 10 pts, 2 rebs, 2 stls, 4-4 fg, 26 mins

35 • Rickie Woltman • Sr. • F • 6-4 • St. Louis, Mo. • Incarnate Word

GP/GS	MIN.	PPG	RPG	APG	STLS	BLKS	FG%	3P%	FT%
10/0	14.0	4.2	3.8	0.3	3	5	.640	.000	.769

LAST GAME: 4 pts, 2 rebs, 11 mins

- Will miss the season due to injury
- Played several seasons in the Swiss Basketball League
- Represented Switzerland at several youth levels
- 2022 SBL Young & Most Improved Player

Career Highs:

P - -
 R - -
 A - -
 M - -

- Sank two triples late vs. Marshall
- Appeared in 30 games, averaging 4.7 points per game as a freshman
- Purdue's 10th Indiana Miss Basketball

Career Highs:

P - 16 2 times
 R - 7 2 times
 A - 4 SIUE - 11/17/22
 M - 27 at WKU - 11/10/21

- Joined the program as a walk-on prior to the season
- Connecticut All-State as a senior

Career Highs:

P - -
 R - 1 Murray State - 11/13/22
 A - -
 M - 2 Murray State - 11/13/22

- Ninth in program history in 3-pointers
- Deferred medical school start to return
- One of three players in Purdue history to play in five seasons
- 176 of 203 made shots have been threes

Career Highs:

P - 25 Denver - 12/12/21
 R - 8 Minnesota - 1/27/22
 A - 5 3 times
 M - 43 Indiana - 1/16/22

- 2nd nationally in assists, 3rd in per game
- 25th in Purdue history in career assists
- Only player averaging 7 ppg, 7 rpg, 7 apg
- First Boiler with a non-point double-double
- Only player in Purdue history (men's & women's) to record multiple triple-doubles

Career Highs:

P - 28 at Wisconsin - 1/31/21
 R - 17 2 times
 A - 12 2 times
 M - 41 Michigan State - 12/5/22

- 14th in among active players in points
- Scored in double figures in every game
- Recorded 100th start vs. Harvard.
- Joined Purdue in spring of 2022
- Played three years at Bradley and one at Rutgers

Career Highs:

P - 36 Indiana State - 1/5/20
 R - 12 at Evansville - 1/11/19
 A - 6 at Drake - 2/20/20
 M - 40 4 times

- Tallied five of Purdue's final 11 points to seal comeback win against Oklahoma State
- Came off the bench in 22 games as a freshman
- Four-time Poughkeepsie Journal All-Star

Career Highs:

P - 13 at Rutgers - 2/20/22
 R - 3 at Northwestern - 2/24/22
 A - 2 Syracuse - 11/30/22
 M - 23 2 times

- 1-of-5 players in 50/40/90 club this year
- 11th in scoring among player w/ no starts
- All-Big Ten honorable mention
- 85.4% free throw clip was 10th best in single-season history last year
- First Australian in program history

Career Highs:

P - 39 at San Diego St. - 12/21/20
 R - 10 Long Beach State - 3/10/21
 A - 11 Western Michigan - 11/14/21
 M - 44 Indiana - 1/16/22

- Scored first collegiate points vs. SIUE
- 2022 Prep Hoops Florida Miss Basketball
- 3-time First Team News-Press SWFL
- Played varsity basketball starting in seventh grade, scored 2,098 points

Career Highs:

P - 2 SIUE - 11/17/22
 R - -
 A - 2 Murray State - 11/13/22
 M - 7 SIUE - 11/17/22

- No. 87 player in the nation by ESPNW
- Won 2021 IHSAA 4A State Championship
- Finished with a 103-7 career record in high school

Career Highs:

P - 2 Florida State - 11/25/22
 R - 1 Indiana State - 11/20/22
 A - -
 M - 2 Murray State - 11/13/22

- Big Ten All-Freshman & honorable mention
- One of six players with 45 3s, 65 assists and 45 steals in each of the last two years
- First in IHSAA history to lead three Final Fours in scoring

Career Highs:

P - 20 2 times
 R - 28 4 times
 A - 7 Michigan State - 1/3/21
 M - 44 Indiana - 1/16/22

- Arrived at Purdue with two years eligibility
- 2022 WAC Player of the Year and CoSIDA All-American
- Led the WAC in scoring with 17.7 points

Career Highs:

P - 30 at Utah Valley - 1/15/22
 R - 14 3 times
 A - 5 at UTRGV - 2/13/21
 M - 41 at Chicago State - 3/2/22

- Played 20.3 minutes per game last year, following just 4.9 in her first two seasons
- No. 25 by ESPNW and No. 919 by USA Today

Career Highs:

P - 18 Penn State - 2/9/22
 R - 11 2 times
 A - 3 at Rutgers - 2/20/22
 M - 33 West Virginia - 11/25/21