



PURDUE BOILERMAKERS

2024 VOLLEYBALL GAME NOTES

BIG

SID: Rachel Coe | coer@purdue.edu | Office: 765-496-7842 | Cell: 518-729-9960
900 John R. Wooden Drive, West Lafayette, IN 47907

2024 PURDUE VOLLEYBALL SCHEDULE

Overall Record: 13-4 (4-2 Big Ten)

Home: 4-1

Away: 5-2

Neutral: 4-1

AUGUST

30 K-State (BIG+)[^] W, 3-1

31 UMBC (BIG+)[^] W, 3-0

SEPTEMBER

1 UC Davis (BIG+)[^] W, 3-0

5 vs. California W, 3-1

6 at Utah W, 3-0

7 at Utah State (MWN) W, 3-0

13 vs. Houston⁺ W, 3-0

14 vs. #10 Kentucky⁺ W, 3-1

19 at #10 Kansas[#] L, 1-3

20 vs. #9 Creighton[#] L, 1-3

21 vs. Tulsa[#] W, 3-0

25 #4 PENN STATE (BTN)^{*} L, 0-3

28 at #16 Minnesota (BTN)^{*} W, 3-2

OCTOBER

4 at Northwestern (BIG+)^{*} W, 3-1

6 MICHIGAN STATE (BTN)^{*} W, 3-0

11 at #2 Nebraska (BTN)^{*} L, 2-3

12 at Iowa (BIG+)^{*} W, 3-1

17 UCLA (BIG+)^{*} 7 p.m.

19 INDIANA (Mackey Arena | BTN)^{*} TBD

23 OHIO STATE (BTN)^{*} 7 p.m.

26 #9 WISCONSIN (Mackey Arena | NBC)^{*} 3:30 p.m.

NOVEMBER

1 at Maryland (BTN)^{*} 6:30 p.m.

2 at Rutgers (BIG+)^{*} 7 p.m.

8 at Indiana (BIG)^{*} 7 p.m.

10 MICHIGAN (BIG+)^{*} 1 p.m.

14 RUTGERS (BIG+)^{*} 6 p.m.

17 ILLINOIS (BTN)^{*} 5 p.m.

21 at #3 Penn State (BTN)^{*} TBD

23 #16 USC (BIG+)^{*} 7 p.m.

27 at #11 Oregon (BTN)^{*} 10:30 p.m.

29 at #RV Washington (BIG+)^{*} TBD

All Times Eastern

^{*} Big Ten match

[^] Stacey Clark Classic

+ SMU Doubletree Invitational

Jayhawk Classic

#10 PURDUE BOILERMAKERS

13-4 | 4-2 Big Ten

Coach: Dave Shondell (22nd season)

Record at Purdue: 471-230

VS

UCLA BRUINS

8-7 | 2-4 Big Ten

Coach: Alfee Reft (2nd season)

Record at UCLA: 26-19

THU. 10/17 - 7 PM ET - WEST LAFAYETTE - HOLLOWAY GYMNASIUM - BIG+

SERIES HISTORY: 0-2 | LAST MEETING: L, 2-3 IN TUSCALOOSA, ALA. (12/11/81)

#10 PURDUE BOILERMAKERS

13-4 | 4-2 Big Ten

Coach: Dave Shondell (22nd season)

Record at Purdue: 471-230

VS

INDIANA HOOSIERS

9-7 | 2-4 Big Ten

Coach: Steve Aird (7th season)

Record at Indiana: 91-106

SAT. 10/19 - 7 PM ET - WEST LAFAYETTE - MACKEY ARENA - BTN

SERIES HISTORY: 77-35 | LAST MEETING: W, 3-1 AT PURDUE (10/18/23)

MONON SPIKE HISTORY: 36-13 | LAST MEETING: L, 1-3 AT INDIANA (10/11/23)

SCHEDULE BREAKDOWN

- Purdue begins its longest homestand of the season with four consecutive matches (two weeks) at home.
- The homestand comes after seeing 11 of the last 13 matches on the road.
- Purdue recently wrapped up a stretch of playing five top-16 foes in six matches, which included three straight top-10 showdowns.
- Purdue has played 5 top-10 teams and own a 1-4 record vs. those foes, however all four losses are to teams currently in the top eight in the AVCA poll. Meanwhile, 50% of those losses are to top-3 teams.
- The schedule features **six** non-conference matchups vs. 2023 NCAA Tournament teams.
- A total of 12 matches this fall will come against teams ranked or receiving votes in the 2023 final poll.
- Purdue will play two matches in its historic **Mackey Arena**: vs. Indiana (10/19) for the Monon Spike trophy match and the following week vs. Wisconsin (10/26).
- The 2024 season will marks the **most road matches** in non-conference action since 2008, with Purdue at home for two matches in the month of September.
- The regular season will close with **four straight matches vs. teams ranked or receiving votes, with three on the road**: at #3 Penn State (11/21), vs. #16 USC (11/23), at #11 Oregon (11/27) and at receiving votes (RV) Washington (11/29).

ON TAP THIS WEEKEND IN PURDUE VOLLEYBALL

- Purdue Athletics celebrates 50 years of women's sports. The volleyball team, among all of Purdue's women's sports celebrating its 50th season will be honored at the football game vs. #2 Oregon in the first quarter.
- Olympian Annie Drews will be inducted to the Leroy Keyes Purdue Athletics Hall of Fame Class of 2024 on Friday.
- Purdue's Hammer Down Cancer match will be Thursday vs. UCLA. The team is auctioning off its match-worn uniforms to benefit the Purdue Institute for Cancer Research. Auctions close Thursday, Oct. 17 at 10:30 p.m. ET.
- Saturday's match in Mackey will serve as Alumnae Day in addition to the Monon Spike match vs. Indiana.

PURDUE VS. UCLA: HISTORY AT A GLANCE

- Purdue will be looking for its first-ever win vs. UCLA. The teams have only met in postseason neutral sites during the 1979 (L, 0-2 in Carbondale, Ill.) and 1981 (L, 2-3 in Tuscaloosa, Ala.).

PURDUE VS. INDIANA: HISTORY AT A GLANCE

- Purdue is 40-11 all-time in home matches vs. Indiana.
- The Boilermakers have lost at home just one time under Dave Shondell and are 38-4 all-time vs. Indiana since Shondell took the reins in 2003.
- There have been no sweeps by either team since the Monon Spike match in 2021.
- The Boilermakers have won 19 of the last 21 Spike matches.
- Purdue and Indiana last met in Mackey Arena for the Monon Spike on September 24, 2016. Purdue won the match, 3-0 (25-15, 25-17, 25-18) and was attended by 8,240 fans and stands today as the second-largest home attendance for Purdue in a Big Ten match (largest: 10,570 vs. Wisconsin, 10/17/08).

50 SEASONS

25 NCAA
TOURNAMENT
APPEARANCES

23 AVCA
ALL-AMERICANS

AVCA/Taraflex Top-25 Coaches Poll (9/30)

Rank	School	Record	Previous Rank
1	Pittsburgh (41)	15-1	1
2	Nebraska (19)	16-1	2
3	Penn State (1)	16-1	3
4	Louisville	14-2	4
5	Stanford	13-2	5
6	Creighton	15-2	5
7	Texas	10-3	7
8	Kansas	14-1	8
9	Wisconsin	11-4	9
10	Purdue	13-4	10
11	Oregon	13-2	11
12	SMU	13-4	15
13	Arizona State	16-2	13
14	Minnesota	11-5	14
15	Kentucky	9-7	12
16	USC	12-4	16
17	Georgia Tech	11-4	20
18	TCU	12-4	17
19	Florida State	12-4	21
20	Utah	15-2	NR
21	Dayton	17-1	22
22	Baylor	10-6	18
23	Florida	11-5	19
24	BYU	10-6	23
25	Auburn	14-2	25

Receiving votes: Arkansas 89; Washington 62; Marquette 26; Texas A&M 19; UCLA 5; North Carolina 4; South Dakota State 4; Virginia 4

Purdue In The AVCA/Taraflex Poll

Date	Rank	Date	Rank
2023 Final	#13	W7 (10/14)	#10
2024 Preseason	#8	W8 (10/21)	
W1 (9/2)	#8	W9 (10/28)	
W2 (9)	#7	W10 (11/4)	
W3 (9/16)	#6	W11 (11/11)	
W4 (9/23)	#10	W12 (11/18)	
W5 (9/30)	#10	W13 (11/25)	
W6 (10/7)	#10	W14 (12/2)	
		Final	

Big Ten of the Week Awards

Player 9/2:	Eva Hudson
Setter 9/9:	Taylor Anderson
Defensive 9/16:	Raven Colvin
Defensive 10/7:	Ali Hornung

AVCA National Player of the Week

Player 9/2:	Eva Hudson
-------------	------------

RETURNING 2023 ALL-AMERICANS

- Purdue returns all three AVCA All-America honorees: junior Eva Hudson (second team), sophomore Chloe Chicoine (third team) and senior Raven Colvin (honorable mention).
- Hudson is the youngest Boilermaker to receive Second Team All-America honors since 1986.
- Chicoine's third team accolade was the highest-ever AVCA All-America honor by a Purdue newcomer.

PURDUE VOLLEYBALL'S ALL-TIME WINNINGEST HEAD COACH

- With the sweep vs. Michigan State on 10/6, HC Dave Shondell became the all-time winningest head coach in Purdue volleyball history, surpassing AVCA Hall of Famer Carol Dewey, with his 470th win.
- Shondell is one of two active head coaches in the Big Ten with as many wins at their institution (joined by John Cook) and is one of seven among Power 4 programs.

THE MONON SPIKE: BY THE NUMBERS:

- Purdue will be looking to take back to Spike after its 15-consecutive wins came to an end last year at Indiana. Purdue's All-Time Record in Monon Spike Matches: 36-13
- Monon Spike Record under Dave Shondell: 19-2
- Purdue has lost the Monon Spike just four times this century (2001, 2002, 2007 and 2023).

THE MONON SPIKE ORIGINS

- The Monon Spike traveling trophy was created in 1981 and is presented to the winning team after one of the two annual matches, alternating location each season between teams. Last year was in Bloomington.
- The trophy idea was the brainchild of Purdue's Donna Hardesty and Anne McMenamy, seniors on the 1981 team. They chose the Spike from the Monon Railroad, which originated in Indiana in the late 19th century, to be a reminder of the competition on the court as well as the tradition of the state of Indiana. As with its sibling trophies, the Old Oaken Bucket (football) and the Golden Boot (soccer), a "P" or "I" is added to the chain signifying the season's winner. The Spike currently has 36 "P" links and 13 "I" links.

PROGRAM RECORDS FALLING

- Since Big Ten play has started, six program records have been set or tied: Longest match (2:53 at #2 Nebraska); Most team aces in a 5-set match during the rally-scoring era (17 at then-#16 Minnesota); Most aces by an individual in a 5-set match during the rally-scoring era (7 by Raven Colvin at then-#16 Minnesota); Most aces by a freshman (6 by Ryan McAleer); Most team digs in a 3-set match in the current 25-point rally scoring (71 vs. Michigan State); Most wins in program history (Dave Shondell, 470).
- Meanwhile, the program is poised for the home attendance record to fall this weekend with its Mackey match vs. Indiana already sold out.

PURDUE: QUICK HITS

- The team is #9 in the nation in blocks per set (2.84), #14 in kills per set (13.89) and #21 in hitting % (.275).
- Eva Hudson and Chloe Chicoine were named to the **AVCA Player of the Year Watch List in September**.
- Three Boilers are averaging **2.5 kills per set** or higher: Hudson (4.21), Chicoine (3.27) and Colvin (2.56).
- Purdue is 43-19 in sets won this season.
- The Boilers are averaging .275 hitting %. To put in perspective, it would rank as #4 in Purdue single-season history if things were to end today. It would be **just the second time this century the Boilers have hit so efficiently**.
- Raven Colvin is #2 in the nation in blocks per set (including #1 in the Big Ten) with 1.71 per set, which would set a program record if the season were to end today, while her .401 hitting % would rank #2 in Purdue single-season history. To put in perspective, the current season-record is .409% (First Team All-American Stephanie Lynch in 2008) and 1.63 blocks per set (Taylor Trammell, 2020).
- Freshman DS Ryan McAleer has recorded a perfect reception % in 11 matches. Moreover, she recorded six aces at #16 Minnesota, tying as the most-ever by a Purdue freshman.
- Eva Hudson has stepped up in the biggest matches of the season. She set a season-high 26 kills on a .349% at #2 Nebraska and nearly had an errorless match at now-#8 Kansas, committing just one attack error in the final points of the match and . This season, she is averaging 4.21 kills per set and 4.65 points per set this season.
- Chloe Chicoine owns a team-leading eight double-doubles this season followed by setter Taylor Anderson (6).

SCOUTING THE UCLA BRUINS

- UCLA owns two top-25 wins this season, beating #24 Washington (10/9) and #14 Georgia Tech (8/30). The team has also pushed two top-20 teams to five sets: #12 Minnesota and #16 USC.
- The UCLA attack is led by junior outside hitter, Cheridyn Leverette, who has tallied 204 kills so far this season and has notched 14 straight games with double-digit kills. Meanwhile Anna Dodson ranks among the top-5 in blocks per set in the Big Ten (1.33).
- Graduate setter Audrey Pak is ranked 7th in the Big Ten in assists so far, recording 561 and averaging 9.67 assists per set.
- The Bruins are coached by Alfee Reft in his second season with the program.

SCOUTING THE INDIANA HOOSIERS

- The Hoosiers will face up against Illinois prior to playing the Boilermakers on Saturday, but currently hold a 9-7 record and are coming off back-to-back conference losses against #14 Minnesota and #3 Penn State.
- Indiana's offense is led by the pin hitter duo of Candela Alonso-Corcelles and Avry Tatum, both averaging over 3 kills per set.
- Libero Ramsey Gary is the strong foundation for the Hoosier's defense, averaging 4.17 digs per set, putting her at #2 in the conference.
- Indiana's head coach Steve Aird is in his seventh year with the program. He previously won two NCAA Championships as an assistant coach for Penn State.

PURDUE VS TOP-25 TEAMS

- The Boilermakers just finished up a stretch of playing six ranked opponents in the last 10 matches, all of which are currently ranked in the top-14.
- Purdue Match Highs: .311% at #2 Nebraska | 15 blocks at #15 Nebraska
- The Boilers totaled 79 digs at then-#16 Minnesota, a season-high, along with 17 aces, a program record-tying number in a Big Ten match.

PURDUE IN 5-SET MATCHES

- Purdue is 11-6 in five-set matches over the last three seasons, including 1-1 in 2024.

Big Ten Individual Rankings

Blocks Per Set No. 1 Raven Colvin (1.71)
Assists Per Set No. 3 Taylor Anderson (10.92)
Total Blocks No. 1 Raven Colvin (106)
Hitting % No. 6 Raven Colvin (.401)
Digs Per Set No. 5 Ali Hornung (3.98)
Kills Per Set No. 4 Eva Hudson (4.21)
Total Attacks No. 2 Eva Hudson (708)
Points Per Set No. 5 Eva Hudson (4.65) No. 15 Raven Colvin (3.98)

Big Ten Team Rankings

No. 1 Attacks Per Set (34.95)
No. 3 Points Per Set (18.18)
No. 2 Total Blocks (176.0)
No. 2 Digs Per Set (15.03)
No. 3 Assists Per Set (12.85)
No. 3 Kills Per Set (13.89)
No. 2 Receive % (94.6)
No. 4 Total Kills (861)
No. 3 Total Assists (797)
No. 4 Hitting % (.275)

2024 Indiv. National Rankings

Blocks Per Set No. 2 Raven Colvin (1.71)
Total Blocks No. 3 Raven Colvin (106)
Assists Per Set No. 10 Taylor Anderson (10.92)
Hitting % No. 28 Raven Colvin (.401)
Attacks Per Set No. 22 Eva Hudson(11.42)
Kills Per Set No. 34 Eva Hudson (4.21)
Career Blocks Per Set No. 3 Raven Colvin (1.39)
Career Kills Per Set No. 3 Eva Hudson (4.34)
Career Attacks Per Set No. 4 Eva Hudson (11.77)

PURDUE AT #2 NEBRASKA

- Purdue's 2-hour 53-minute five-setter at #2 Nebraska was the longest match in known-program history (research available through 1999). The second-longest match in program history was also last year's five-setter vs. #2 Nebraska, which clocked in at 2 hours and 51 minutes.
- The Boilermakers held match point, 14-13 and went errorless in Set 5 (13-0-27) for a .481 set clip.
- In addition to Purdue edging Nebraska in efficiency, .311% vs. .242%, Purdue blew Nebraska opponents away as the most efficient team the Huskers have faced (previous opponent-high: SMU's .242% on 9/3/24).
- Purdue out-blocked Nebraska, 15-5, holding the Huskers to a season-low. Raven Colvin was on 11 of those 15 blocks.
- Eva Hudson and Chloe Chicoine went off, combining for 48 kills and each hitting over .300% in the match.
- The Achilles heel for Purdue were service errors, tallying 19 errors in the match, including four in

PURDUE NOTES: LAST 5 MATCHES

- The Boilers are averaging a .265 hitting clip while holding opponents to .201%.
- The team is out-digging opponents 15.71 digs per set vs. 14.14.
- Three Boilers are hitting over .300: Raven Colvin (.336%), Lourdes Myers (.442%) and Kenna Wollard (.337%).
- Kenna Wollard leads the outside hitters in hitting % while averaging 2.29 kills per set (fourth on the team).
- Ali Hornung has racked up 93 digs in the last five matches, leading the team with 4.43 per set.
- Taylor Anderson is averaging 11.05 assists per set, 2.38 digs per set and .67 blocks per set.

14,870 STRONG: SETTING A BIG TEN MATCH ATTENDANCE RECORD

- With each of the Mackey matches, Purdue is primed to eclipse the current 19-year-old attendance record for a regular-season match between two Big Ten opponents, which stands at 10,927 (#23 Illinois at #2 Minnesota, 10/16/04). It will also set a Purdue volleyball home attendance record.
- The matches have been sold out for nearly a month. (Sold out on Friday, September 20).
- The last time Purdue volleyball played in Mackey Arena was in 2016 vs. Indiana, which also happened to be the Monon Spike match in front of a crowd of 8,240 fans.
- The match vs. Wisconsin will air on NBC, Purdue volleyball's first-ever appearance on the station.
- The last and only time Purdue and Wisconsin met in Mackey Arena was in 2008, which the attendance of 10,570 fans remain as the second-largest crowd to witness a Big Ten regular-season match in conference history.

SHONDELL QUOTE: "It's time to take our Boilermakers back into Mackey Arena. The opportunity to grow our program, as well as our sport, is essential right now. Holloway is a special home, but for a few matches this fall, our team and Boilermaker Nation, must make Mackey Arena the best home-court environment in the land."

HISTORY OF ATTENDANCE SUCCESS

- Purdue set the NCAA women's volleyball attendance record in Mackey Arena on Oct. 29, 1985 with 10,645 fans watching Purdue defeating Western Michigan 3-1 (11-15, 15-6, 15-5, 15-2). The event was dubbed "Pac Mac" with promotions that allowed patrons to attend for just \$1.

TRENDING UP: THE BACK ROW

- Nearly every back court player is digging more balls since conference play started. Hornung (4.33 vs. 3.98), Hudson (2.67 vs. 2.39) and McAleer's (2.38 vs. 2.21) digs per set are higher during Big Ten play than their overall stats.
- Ali Hornung has found her groove as libero, recording a season-high 24 digs at now-#14 Minnesota.

ACED IT: 17 ACES AT #16 MINNESOTA

- The team's 17 service aces included five in the fifth set. Three came during libero Julia Kane's serving tear, which was a career-high.
- Raven Colvin tied a program record in five-set matches with her seven service aces.
- Freshman Ryan McAleer generated six aces, the third freshman in Purdue history, including the only one this century to do so (joining Lauri Grimes and Brooke White, both accomplished in 1993).
- The Boilermakers' 17 aces were the most by any team in the nation last week and are the most by a Big Ten team this season.

2024 Team National Rankings

No. 10 Blocks Per Set (2.84)
No. 14 Kills Per Set (13.89)
No. 21 Hitting % (.275)
No. 23 Assists Per Set (12.85)
No. 26 Total Blocks (176.0)

BIG
STANDINGS

Through Monday, October 14

School	Big Ten Record	Overall Record	Overall Pct.
Nebraska	6-0	16-1	.941
Penn State	6-0	16-1	.941
Oregon	5-1	13-2	.867
Wisconsin	5-1	11-4	.733
Michigan	4-2	14-3	.824
Purdue	4-2	13-4	.765
USC	4-2	12-4	.750
Minnesota	4-2	11-5	.688
Washington	3-3	13-3	.812
Illinois	3-3	11-5	.688
Iowa	3-3	9-9	.500
Indiana	2-4	9-7	.652
UCLA	2-4	8-7	.533
Maryland	1-5	10-7	.588
Ohio State	1-5	8-8	.500
Northwestern	1-5	3-11	.241
Michigan State	0-6	7-10	.412
Rutgers	0-6	5-12	.294

Wins vs. Top-10 Opponents

Last 8 Years (2017-present)

Opponent	Score	Date
vs. #10 Kentucky	3-1	9/14/24
vs. #3 Wisconsin	3-2	11/17/23
vs. #8 Minnesota	3-0	9/23/22
vs. #3 Ohio State	3-2	9/24/21
vs. #3 Wisconsin	3-1	10/31/21
at #4 Wisconsin	3-1	11/12/21
at #8 Minnesota	3-1	11/14/21
vs. #5 BYU	3-2	12/9/21
at #10 Penn State	3-1	3/5/21
at #9 Ohio State	3-1	3/26/21
at #9 Ohio State	3-1	3/27/21
vs. #5 Nebraska	3-2	10/26/19
at #4 Penn State	3-2	10/27/18
vs. #9 Creighton	3-1	9/8/17
vs. #5 Minnesota	3-1	11/10/17
vs. #10 Wisconsin	3-0	11/11/17
vs. #10 Michigan State	3-1	11/24/17
vs. #9 Stanford	3-2	9/9/16
vs. #4 Kansas	3-1	9/16/16
vs. #3 Minnesota	3-2	11/21/15

Top-25 Wins in Holloway

By Most Recent (Since 2011)

Opponent	Score	Date
vs. #3 Wisconsin	3-2	11/17/2023
vs. #16 Penn State	3-2	11/5/2023
vs. #19 Kentucky	3-2	9/9/2023
vs. #8 Minnesota	3-0	9/23/2022
vs. #3 Wisconsin	3-1	10/31/2021
vs. #15 Penn State	3-2	10/17/2021
vs. #3 Ohio State	3-2	9/24/2021
vs. #22 Tennessee	3-0	9/18/2021
vs. #16 Marquette*	3-1	12/7/2019
vs. #23 Michigan	3-0	11/23/2019
vs. #5 Nebraska	3-2	10/26/2019
vs. #10 Michigan State	3-1	11/24/2017
vs. #10 Wisconsin	3-0	11/11/2017
vs. #13 Michigan	3-1	10/28/2016
vs. #4 Kansas	3-1	9/16/2016
vs. #3 Minnesota	3-2	11/21/2015
vs. #18 Illinois	3-2	10/25/2015
vs. #22 Ohio State	3-2	10/18/2014
vs. #19 Michigan State	3-2	11/30/2013
vs. #6 Nebraska	3-0	11/22/2013
vs. #15 Wisconsin	3-2	11/2/2013
vs. #12 Ohio State	3-0	10/4/2013
vs. #21 Illinois	3-2	9/29/2012
vs. #21 Northern Iowa	3-0	8/24/2012

* NCAA Tournament match

Week 6 Snapshot: Last Week in Review

NATIONAL RANKINGS

Kills Per Set
No. 28 | Eva Hudson, 44
Total Assists
No. 29 | Taylor Anderson, 94

AMONG THE BIG TEN

No. 1 | Team Kills (124)
No. 4 | Hitting % (.266)
No. 5 | Team Digs (114)
No. 6 | Team Kills Per Set (13.78)
No. 10 | Team Attacks Per Set (34.22)

Total Points

No. 1 | Eva Hudson (48.5)

Total Kills

No. 1 | Eva Hudson (44)

Total Assists

No. 3 | Taylor Anderson (94)

Total Blocks

No. 3 | Raven Colvin (14)

LAST WEEK'S NEED-TO-KNOW

- Purdue went 1-1 last week, falling in five at #2 Nebraska despite leading, 14-13 in the 5th. The team bounced back with a 3-1 win just 20 hours later at Iowa.
- Purdue out-performed Nebraska in hitting % (.311%-.242%) and blocks (15-5). The difference-maker came in Purdue's service errors (19-7).
- Eva Hudson led the Big Ten in total points (48.5) and kills (44). Her performance included 26 kills on a .349 clip at #2 Nebraska.
- The Boilers went errorless in the 5th set at Nebraska (13-0-27) for a .481%.
- After the team's 19 service errors in Lincoln, the team responded with 10 aces at Iowa, including four in the team's first 11 points.

PURDUE IN THE NATIONAL RANKINGS: 117 CONSECUTIVE WEEKS

- The program has been ranked for 117 consecutive weeks (since preseason 2017), the longest active streak in Purdue Athletics.
- Since the 2021 spring season, Purdue has been ranked among the top-10 for 34 weeks.
- The Boilermakers' history of excellence includes 52 of the last 68 weeks ranked among the top-15 (75%).
- Purdue has spent the entirety of the 2024 season in the top-10 (includes preseason poll).

ON A ROLL: RIGHT SIDE KENNA WOLLARD

- The sophomore has set career-highs in nearly every statistical category this season including kills (18 at Northwestern, 10/4/24), blocks (5 vs. Houston, 9/13/24) and hitting %.
- She led the team in Week 6 (at Northwestern and vs. Michigan State) in kills per set (.371) and led outside hitters in efficiency (.385%).
- Already she has nearly doubled the number of kills produced compared to last season: 57 in 2023 vs. 101 in 2024, despite playing in seven less matches (21 matches played in 2023 vs. 14 in 2024).
- Number of matches hitting .300 or better this season: 9
- Number of matches hitting .400 or better this season: 3
- Number of matches hitting .450 or better this season: 2

SMOOTH & STEADY: SETTER TAYLOR ANDERSON

- She leads all Big Ten setters with 60 blocks this season (second-most is 47 by USC's Mia Tuaniga). In perspective, Anderson also owns more blocks than middles Andi Jackson (Nebraska), Taylor Trammell (Penn State), Devyn Robinson (Wisconsin), Carter Booth (Wisconsin) and Anna Smrek (Wisconsin).
- Anderson has set Purdue to five matches over .300%, including .311% at #2 Nebraska, .310 vs. #10 Kentucky and .450 vs. UC Davis.
- Anderson has gotten more aggressive on the attack compared to her freshman season, averaging .55 kills per set compared to .31 from last season (35 kills in 2023 vs. 34 in 2024). In fact, her numbers are up in virtually every category including digs per set (1.97 vs. 2.21), assists per set (9.88 vs. 10.92) and blocks (.85 vs. .97).
- She set a season-high 13 digs alongside 47 assists in the four-set victory at Northwestern (10/4).
- Has posted 7 or more blocks four times this season (last: 7 at #2 Nebraska)
- 40 or more assist in a match this season: 9
- 45 or more assists in a match this season: 6
- 50 or more assists in a match this season: 3
- Double-doubles this season: 6

TOP-10 TAKEDOWNS

- In every season for the last 10 years, Purdue has picked up at least one top-10 victory. In fact, Purdue's won 20 top-10 showdowns since 2015 (last: vs. #10 Kentucky, 3-1 on 9/14/24).

ON A MISSION: RAVEN COLVIN

- No player in DI** is taking care of business like Colvin for both hitting % and blocks, ranking #2 in blocks per set (1.71) and #28 in hitting % (.401). She led the nation in blocks for the first 4 straight weeks and ranked among the top-12 in hitting % until Week 7.
- For 11 of the last 12 matches, Colvin has hit .308% or higher.
- She set a **career-high 19 kills** at #16 Minnesota (9/28) alongside a Purdue 5-set record-tying 7 aces in a five-set match.
- She is hitting, blocking and serving more efficiently than ever before and leads the team in aces.
- Colvin has **nearly doubled her hitting efficiency** compared to 2023: .401% vs. .280%.
- Raven Colvin is #2 in the nation in blocks per set (including #1 in the Big Ten) with 1.71 per set, which would set a program record if the season were to end today, while her .401 hitting % would rank #2 in Purdue single-season history. To put in perspective, the current season-record is .409% (First Team All-American Stephanie Lynch in 2008) and 1.63 blocks per set (Taylor Trammell, 2020).
- She's hit **.440% or higher in eight of 10 consecutive matches (9/7-10/6)**.
- Colvin ranks #2 in Purdue history with 493 career block assists and #3 in total blocks. She is one of just two blockers in program history to post as many this century (last: record-holder Stephanie Lynch, 660 blocks, 2005-08).
- She also ranks #2 in Purdue history and the only Boilermaker this century to record 1.39 career blocks per set (record holder: Donna Gill, 1.49 blocks/set, 1991-92). The Big Ten season record in blocks/set is record: 1.85 set in 1996.

- Named **Big Ten Defensive Player of the Week** (9/16) after back-to-back .571% performances, 7 blocks vs. #10 Kentucky and four vs. Houston.
- The Boiler has recorded three 10-block performances: 11 at #2 Nebraska, 10 vs. K-State and 10 at Utah State (9/7).
- Number of matches with one or fewer attack errors: 10
- Number of matches hitting .300 or above: 18
- Number of matches hitting .400 or above: 13
- Number of matches hitting .500 or above: 6
- Number of matches hitting .700 or above: 3
- Number of matches with six or more blocks: 10

HUDSON NAMED AVCA NATIONAL PLAYER OF THE WEEK: W1

- The Stacey Clark Classic MVP led the league with 46 kills and 50.5 points.
- Averaged 4.60 kills per set
- Hit over .430 in back-to-back matches (.467% vs. UMBC and .433 vs. UC Davis)
- Recorded just one attack error vs. UMBC (8/31)
- Posted a double-double in the season-opener vs. K-State, recording 16 kills, 12 digs and a career-high-tying 5 blocks, which were the most since her freshman season.
- Was one dig shy of her second double-double of the season with her 15-kill, 9 dig performance vs. UC Davis.

THE BOILERMAKER FAITHFUL

- Purdue has reached its second straight complete season-sell-out after the two Mackey matches officially sold out on Friday (9/20).
- The first match sold out within 20 minutes of the general public on-sale (vs. USC, 11/23).
- The lower bowl for each of the Mackey Arena matches filled up with just John Purdue Club member purchases before it opened up to the general public on-sale.
- Within the first hour, there were three sellouts: USC, Michigan and Penn State. Within an hour and 20 minutes, there were four sellouts.
- Within two hours of on-sale, over 9,800 tickets were sold for the Wisconsin match. That is the equivalent of filling Holloway four times over.
- Only five matches had tickets left just two hours into on-sale.
- Every ticket for every match was sold last year, making 2023 a complete-season sell-out.
- The student section: The Block Party sold out its season tickets in 20 minutes. That is up from the 40 minutes it took in 2023 and just under two-hour mark in 2022.
- Fans looking for season tickets have had to join a waiting list for at least the last three years. Due to the high renewal rate, only two people were able to move off the wait list in 2023 to buy season tickets.

EVA HUDSON: A FORCE

- Hudson is averaging 4.21 kills per set, 2.39 digs per set and 4.65 points per set as a junior.
- She's coming off a Big Ten season-high .349 clip at #2 Nebraska (26-4-63).
- She has posted a double-double in each week of Big Ten play, all of which have come on the road (at #2 Nebraska, at #16 Minnesota and Northwestern).
- At #2 Nebraska, went errorless and hit .500 (5-0-10) in Set 2, hit .500% in Set 3 (7-1-12) and errorless in Set 5 (7-0-18).
- Hudson went errorless in Set 2 vs. #10 Kentucky to help turn the tides, posting an 8-0-11 (.727) performance on the way to Purdue's 3-1 victory.
- Has posted at least one errorless set in every match this season.
- Went errorless for nearly the entire match at #10 Kansas until the very end, forfeiting one attack error with the score 20-20 in Set 4. She finished the match 17-1-53.
- Posted 15 kills over just two sets of action vs. #10 Kentucky and seven of Purdue's 15 points in Set 5 at #2 Nebraska.
- She is averaging a .268 clip, but hit over .400 in back-to-back matches over opening weekend.
- She's hit over .300 in 3 of 5 matches vs. top-10 foes, including just one error at Kansas.
- Hudson is on track to become Purdue's all-time leader in career kills/set (4.32 currently; record is 3.96).
- Last year, the 2023 AVCA Second Team All-America honoree ranked #1 in the Big Ten and #5 in the nation in kills (560) and #2 in the Big Ten, #12 in the nation in total points (605.5).
- She is the fastest Boilermaker to reach 1,000 career kills in the rally-scoring era and recorded more kills over her first two years than any Boilermaker to come through the program (1,075).
- Number of season / career double-doubles: 5 / 22
- Number of matches in season / career with 15+ kills: 11 / 57
- Number of matches in season / career with 20+ kills: 1 / 14
- Number of matches in season / career hitting .300% or above: 7 / 29
- Number of matches in season / career hitting .350% or above: 3 / 16
- Number of matches in season / career hitting .400% or above: 2 / 10
- Number of errorless sets in season: 21

The Last Time....

A Match Went to 5 Sets

Oct. 11, 2024 at #2 Nebraska
L, 2-3 (22-25, 25-22, 25-23, 22-25, 15-17)

Last Victory over a Top-5 Team

Nov. 17, 2023 vs. #3 Wisconsin
W, 3-2 (22-25, 25-19, 25-20, 12-25, 16-14)

Team Hitting % of .400 or Better

.450 | Sept. 1, 2024 vs. UC Davis | W, 3-0

60 or More Team Kills

68 | Oct. 11, 2024 at #2 Nebraska | L, 2-3

15 or More Total Team Blocks

15 | Oct. 11, 2024 at #2 Nebraska | L, 2-3

80 or More Team Digs

83 | Dec. 2, 2023 vs. Marquette | W, 3-1

10 or More Team Aces

10 | Oct. 12, 2024 at Iowa | W, 3-1

Team Season-Highs

Total Kills

68 | Oct. 11 at #2 Nebraska

Hitting % in a Match

.450 | Sept. 1 vs. UC Davis

Hitting % in a Set

.538 (Set 2) | Sept. 5 vs. California

Total Digs

79 | Sept. 28 at #16 Minnesota

Total Blocks

17 | Sept. 7 vs. Utah State

Fewest Attack Errors

7 | Aug. 31 vs. UMBC

Lowest Opponent Hitting %

.065 | Sept. 7 vs. Utah St.

Total Attacks

167 | Oct. 11 at #2 Nebraska

Service Aces

17 | Sept. 28 at #16 Minnesota

Top Individual Performances: 2024 Season

Category	Purdue	Opponent
Points	29 (Colvin at #16 Minnesota, 9/28)	24.5 (Merritt Beason, Nebraska)
Kills	26 (Hudson at #2 Nebraska, 10/11)	22 (London Davis, Kansas)
Attacks	63 (Hudson at #2 Nebraska, 10/11)	54 (Merritt Beason, Nebraska)
Service Aces	7 (Colvin at #16 Minnesota, 9/28)	4 (Kamryn Gibadlo, Utah)
Total Blocks	11 (Colvin at #2 Nebraska, 10/11)	7 (twice, last: Hannah Whittingstall, Iowa)
Block Solos	3 (Colvin vs. Utah State, 9/7)	3 (Jess Mruzik, Penn State)
Block Assists	9 (twice by Colvin; last: at #2 Nebraska, 10/11)	7 (Hannah Whittingstall, Iowa)
Digs	24 (Hornung at #16 Minnesota, 9/28)	20 (last: Nalani Iosia, Michigan State)
Assists	54 (Anderson at #16 Minnesota, 9/28)	60 (Bergen Reilly, Nebraska)
Attack % (10 attempt, min.)	.733% (Colvin, 12-1-15 vs. UC Davis, 9/1)	.545% (Caroline Jurevicius, Penn State, 6-0-11)

Purdue's Record When...

3-Set Matches: 7-1

4-Set Matches: 5-2

5-Set Matches: 1-1

Team attack % is .200 or better: 12-2

Team attack % is .250 or better: 9-1

Team attack % is .300 or better: 4-1

10 or more team blocks: 8-1

After dropping Set 1: 2-4

After winning Set 1: 10-0

Trailing after Set 3: 0-2

Leading after Set 3: 6-1

Record By Class

Seniors: 83-31 (win %: 73%)

Juniors: 57-24 (win %: 77%)

Sophomores: 36-13 (win %: 74%)

Freshmen: 13-4 (win %: 80%)

Undefeated Starts Under Shondell

1. 2011 (14-0)
2. 2018 (11-0)
3. 2005 (11-0)
4. **2024 (8-0)**
5. 2017 (7-0)
- 2014 (7-0)
- 2008 (7-0)

Purdue Career Total Blocks

Name	TB	Years
1. Stephanie Lynch	660	2005-08
2. Marianne Smith	567	1982-85
3. Raven Colvin	564	2021-
4. Kate Crandell	563	1981-84
5. KiKi Jones	510	2011-14

Purdue Career Block Assists

Name	TB	Years
1. Stephanie Lynch	550	2005-08
2. Raven Colvin	493	2021-
3. KiKi Jones	454	2011-14
4. Grace Cleveland	423	201-21
5. Kristen Arthurs	403	2007-10

CHLOE CHICOINE: YEAR 2

- Has reached double-digit kills in 13 of 14 matches this season.
- She is averaging 3.27 kills per set, 2.55 digs per set and 3.65 points per set as a sophomore.
- Set a season-high 22 kills (22-4-55) on a Big Ten-season-high .327 clip at #2 Nebraska.
- Led the team in the season-opener vs. K-State with 17 kills.
- Led the team in both kills (11) and digs (10) vs. Houston (9/13).
- Posted a season-high 15 digs vs. Cal (9/5).
- The 5-10 hitter has recorded a block in four consecutive matches.
- Recorded a career-high four blocks (2 solo, 2 assisted) alongside 14 kills at a .310 clip at Utah State (9/7).
- Was named Player of the Week once and Big Ten Freshman of the Week five times last season, including a Week 7 performance in which she earned Big Ten Freshman of the Week after leading the entire Big Ten, Pac-12 and ACC in points per set (5.63).
- Chicoine produced in the biggest matches last season, hitting .359% vs. #2 Nebraska with 18 kills and just four errors on 39 swings. At #11 Penn State, the freshman recorded a Big Ten season-high 20 kills with her second-highest hitting % of the year with a .405 clip in the match, including an errorless six kills on nine attacks (.667%) to seal the win in Set 4. She went on to best her kills at home vs. Penn State, totaling a career-high 27 kills. Moreover, vs. Minnesota, she recorded just one error in the match with a .333 hitting % with 11 kills and six digs. Against #3 Wisconsin, she obliterated her previous career-high of 14 digs, totaling 23 in the win.
- Number of season / career double-doubles: 8 / 18
- Number of matches in season / career with 15+ kills: 3 / 19
- Number of matches in season / career with 20+ kills: 1 / 6
- Number of matches in season / career with 10+ digs: 9 / 18
- Number of errorless sets in season / career: 14 / 50

BIG TEN CO-DEFENSIVE PLAYER OF THE WEEK (10/7): ALI HORNUNG

- Libero Ali Hornung received her first career Big Ten weekly honor as Co-Defensive Player of the Week.
- Over the last three matches, she's totaled 64 digs and leads the team with 5.33 digs per set.
- Posted 18 digs and a perfect reception % after 27 attempts at Northwestern.
- Recorded 22 digs vs. Michigan State in the three-set win, a performance that included 10 digs in Set 1 alone.
- Knocked on the door of a double-double with 10 digs, 7 assists vs. #10 Kentucky.
- Eva Hudson is averaging 3.00 digs per set, second-most on the team.

HC DAVE SHONDELL & COACHING STAFF

- In the 2024 calendar year, Dave Shondell began it with a four-year contract extension running through the 2027 season and has now reached GOAT status as the all-time winningest head coach in program history (470 wins).
- Under Shondell's guidance, Purdue has won 12 matches vs. top-5 opponents in the last 13 years.
- Led Purdue to a 123-46 record over the last five years alone.
- On the national stage, he is one of seven active coaches to lead a program for at least 21 years and one of seven with as many wins in the Power 4 (470 wins)
- In the last 21 seasons, Shondell has led the team to 18 NCAA tournament appearances and a perfect 18-0 record in first round matches.
- Last season, Shondell coached one of the youngest squads in program history, leading them to a third-place Big Ten finish and an NCAA Regional Semifinal berth. Three Boilermakers received All-America nods while tying a Purdue record of six Big Ten postseason honors, including two unanimous selections.
- He owns a .670 winning % at Purdue and is one of three active Big Ten coaches to be at their institution for 10 years.
- He is one of eight head coaches in Big Ten history to produce as many wins and one of two active coaches, joined by John Cook. Moreover, Shondell is the only one of the two to produce those wins at the same institution (Cook: Wisconsin & Nebraska).
- Coaching Staff Updates For 2024:** Kathy Jewell (22nd season) was promoted to associate head coach - recruiting coordinator; John Klanac was hired as assistant coach in January; Ben Cutrone (previously the GA) was hired as volleyball analyst in May.
- John Klanac was previously at Rice and graduated from Ohio State, where he was a 2011 national champion in men's volleyball.

PURDUE ATHLETICS INVESTING IN THE PROGRAM

- New this season, Purdue will play two matches in the history Mackey Arena.
- Holloway Gymnasium is home to a **brand-new Taraflex court**.
- The team received new **updates to their locker room, player lounge and film room**.
- A new \$11 million Purdue **Student-Athlete Dining Facility** opened on July 31.
- The **weight room** used by volleyball, men's and women's basketball has undergone construction and entirely new equipment has been purchased.

ANNIE DREWS INDUCTED TO THE PURDUE HALL OF FAME

- Two-time Olympian Annie Drews (2012-15) will be inducted to the Leroy Keyes Purdue Athletics Hall of Fame on Friday.
- A four-year letterwinner as an outside hitter, she was a gold medalist at the 2020 Tokyo Olympics, playing a key role in Team USA's historic run on the world stage and a silver medalist at the 2024 Paris Olympics as well as a regular with the U.S. Senior National Team.
- Before her international glory, she led the Boilermakers to three NCAA Tournament trips, including two Sweet 16s and one Elite Eight. Drews closed out her Purdue career with Second Team All-America honors in 2015 along with back-to-back First Team All-Big Ten accolades.
- She is the seventh volleyball player to be inducted to elite group, joining Ariel (Turner) Gebhardt (Class of 2020), Stephanie (Lynch) Harpenau (Class of 2018), Carol Dewey and Debbie (McDonald) West (Class of 2003), Marianne (Smith) Orr (Class of 1999) and Jane Neff (inaugural Class of 1994).

RECORD BOOK WATCH

- Raven Colvin has the opportunity this weekend to move up in the Purdue Career-Top 10 list in total blocks and move into second all-time.
- Purdue will set the Big Ten regular-season match attendance record and home match record with their Mackey matches. Currently, Purdue's attendance record is 10,645 (set on 10/29/1985). With Mackey Arena's capacity is 14,876 and both matches have sold out.
- Colvin is 58 block assists away from setting a new Purdue career record, 97 total blocks away from setting a new Purdue career record and 134 kills away from reaching 1,000.
- Colvin is on track to set the Purdue single-season program record for blocks per set (1.71). Meanwhile, if the season were to end today, she'd rank #2 in Purdue history with her .401 hitting %.

PURDUE VOLLEYBALL

2024 ROSTER

No.	Name	Ht.	Pos.	Yr.	Hometown / High School / Last School
1	Rachel Williams	5-7	DS	RS-Fr.	West Lafayette, Ind. / West Lafayette
2	Chloe Chicoine	5-10	OH	So.	Lafayette, Ind. / McCutcheon
3	Ryan McAleer	5-6	DS	Fr.	Overland Park, Kan. / Blue Valley
4	Kenna Wollard	6-1	OH	So.	Dunlap, Ill. / Illinois Valley Central
5	Taylor Anderson	6-1	S	So.	San Antonio, Texas / Cornerstone Christian
6	Sienna Foster	5-9	DS	Fr.	Lafayette, Ind. / Benton Central
7	Raven Colvin	6-1	MB	Sr.	Indianapolis, Ind. / Heritage Christian
8	Raven Gray	6-1	OH/RS	Sr.	Charlotte, N.C. / Cox Mill / Winston-Salem State
9	Lourdès Myers	6-3	MB	RS-Sr.	Alliance, Ohio / St. Thomas Aquinas
10	Ali Hornung	5-10	DS/OH	Sr.	New Albany, Ind. / Providence
11	Allie Shondell	5-10	S	Fr.	Lafayette, Ind. / McCutcheon
14	Grace Heaney	6-2	OPP/RS	So.	Omaha, Neb. / Elkhorn North
15	Lizzie Carr	6-6	MB	RS-So.	West Chester, Pa. / West Chester East
17	Eva Hudson	6-1	OH	Jr.	Fort Wayne, Ind. / Bishop Dwenger
19	Sydney Yim	6-1	S	Sr.	Newburyport, Mass. / Newburyport
21	Julia Kane	5-11	DS	So.	Windermere, Fla. / Windermere Prep
22	Emily Rastovski	6-2	OH	Sr.	Valparaiso, Ind. / Morgan Township

Head Coach: Dave Shondell, 22nd season

Associate Head Coach - Recruiting Coordinator: Kathy Jewell, 22nd season

Assistant Coach: John Klanac, 1st season

Assistant Coach: Michael Bouril, 2nd season | 5th overall at Purdue

Supervisor of Volleyball Operations: Carrie Gurnell, 4th season

Volleyball Analyst: Ben Cutrone, 1st season | 3rd overall at Purdue

Graduate Assistant: Owen Mahin, 1st season

Pronunciation Guide

Chloe Chicoine: SHIH-coin (starts like Chicago)

Lourdès Myers: LORD-is

Ali Hornung: HORN-nung

Ryan McAleer: MAC-uh-leer

Eva Hudson: EE-va (think eve)

Emily Rastovski: RAZ-taw-v-skee

John Klanac: Klan-ICK

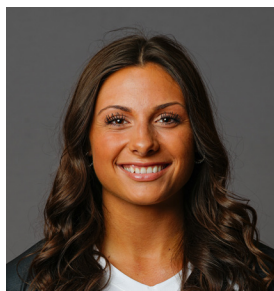
Michael Bouril: BURR-ill



2024 PURDUE VOLLEYBALL ROSTER



#1 Rachel Williams
R-Fr. | DS | 5-7 | West Lafayette, Ind.



#2 Chloe Chicoine
So. | OH | 5-10 | Lafayette, Ind.



#3 Ryan McAleer
Fr. | DS | 5-6 | Overland Park, Kan.



#4 Kenna Wollard
So. | OH | 6-1 | Dunlap, Ill.



#5 Taylor Anderson
So. | S | 6-1 | San Antonio, Texas



#6 Sienna Foster
Fr. | DS | 5-9 | West Lafayette, Ind



#7 Raven Colvin
Sr. | MB | 6-1 | Indianapolis, Ind.



#8 Raven Gray
Sr. | OH/RS | 6-1 | Charlotte, N.C.



#9 Lourdès Myers
RS-Sr. | MB | 6-3 | Alliance, Ohio



#10 Ali Hornung
Sr. | DS/OH | 5-10 | New Albany, Ind.



#11 Allie Shondell
Fr. | S | 5-10 | Lafayette, Ind.



#14 Grace Heaney
So. | OPP/RS | 6-2 | Omaha, Neb.



#15 Lizzie Carr
RS-So. | MB | 6-6 | West Chester, Pa.



#17 Eva Hudson
Jr. | OH | 6-1 | Fort Wayne, Ind.



#19 Sydney Yim
Sr. | S | 6-1 | Newburyport, Mass.



#21 Julia Kane
So. | DS | 5-11 | Windermere, Fla.



#22 Emily Rastovski
RS-Jr. | OH | 6-2 | Valparaiso, Ind.



Graduate Assistant
Owen Mahin | 1st Season



Volleyball Analyst
Ben Cutrone | 1st Season



Head Coach
Dave Shondell
22nd Season



Assoc. Head Coach
& Recruiting Coordinator
Kathy Jewell
22nd Season



Assistant Coach
Michael Bouril
5th Season



Assistant Coach
John Klanac
1st Season



Director of Operations
Carrie Gurnell
4th Season



2024-25 Purdue Women's Volleyball Combined Team Statistics All games

Page 1/1
as of Oct 13, 2024

Game Records

Overall	Conference	Home	Away	Neutral
13 - 4	4 - 2	4 - 1	5 - 2	4 - 1

Team Box Score

			Attack					Set		Serve				Dig		Blocking						
##	Player	SP	K	K/S	E	TA	PCT	A	A/S	SA	SE	SA/S	RE	DIG	DIG/S	BS	BA	TOT/S	BLK/S	BE	BHE	PTS
1	Williams, Rachel	36	1	0.03	0	3	.333	1	0.03	5	11	0.14	0	9	0.25	0	0	0	0.00	0	0	6.0
2	Chicoine, Chloe	62	203	3.27	78	614	.204	21	0.34	13	21	0.21	7	158	2.55	2	17	19	0.31	2	0	226.5
3	McAleer, Ryan	61	2	0.03	1	4	.250	18	0.30	10	25	0.16	12	135	2.21	0	0	0	0.00	0	0	12.0
4	Wollard, Kenna	57	116	2.04	41	275	.273	0	0.00	0	0	0.00	0	26	0.46	1	34	35	0.61	7	0	134.0
5	Anderson, Taylor	62	34	0.55	10	92	.261	677	10.92	14	24	0.23	1	137	2.21	4	56	60	0.97	2	3	80.0
7	Colvin, Raven	62	159	2.56	43	289	.401	3	0.05	26	34	0.42	1	34	0.55	17	89	106	1.71	11	0	246.5
8	Gray, Raven	1	1	1.00	0	1	1.000	0	0.00	0	0	0.00	0	0	0.00	0	0	0	0.00	0	0	1.0
9	Myers, Lourdes	58	63	1.09	15	133	.361	0	0.00	0	0	0.00	1	16	0.28	4	52	56	0.97	19	0	93.0
10	Hornung, Ali	62	0	0.00	0	3	.000	51	0.82	3	4	0.05	15	247	3.98	0	1	1	0.02	0	0	3.5
11	Shondell, Allie	3	0	0.00	1	1	-1.000	11	3.67	0	1	0.00	0	1	0.33	0	3	3	1.00	0	0	1.5
15	Carr, Lizzie	12	21	1.75	4	44	.386	0	0.00	0	0	0.00	0	1	0.08	1	8	9	0.75	1	0	26.0
17	Hudson, Eva	62	261	4.21	71	708	.268	7	0.11	10	14	0.16	14	148	2.39	2	30	32	0.52	3	0	288.0
21	Kane, Julia	42	0	0.00	0	0	.000	8	0.19	9	20	0.21	1	20	0.48	0	0	0	0.00	0	0	9.0
PURDUE		62	861	13.89	264	2167	.275	797	12.85	90	154	1.45	63	932	15.03	31	290	176	2.84	45	3	1,127.0
Opponents		62	805	12.98	359	2262	.197	749	12.08	63	143	1.02	90	881	14.21	16	199	115.5	1.86	29	4	983.5

Team statistics

	PURDUE	OPP
ATTACK		
Kills	861	805
Errors	264	359
Total Attacks	2167	2262
Attack Pct	.275	.197
Kills/Set	13.89	12.98
SET		
Assists	797	749
Attempts	2113	2198
Assist Pct	.377	.341
Assists/Set	12.85	12.08
SERVE		
Aces	90	63
Errors	154	143
Attempts	1466	1306
Serve Pct	.895	.891
Aces/Set	1.45	1.02
SERVE RECEPTIONS		
Errors	63	90
Errors/Set	1.02	1.45
Attempts	1163	1312
Reception Pct	.946	.999
DEFENSE		
Digs	932	881
Digs/Set	15.03	14.21
BLOCKING		
Block solo	31	16
Block Assist	290	199
Total Blocks	176	115.5
Blocks/Set	2.84	1.86
Block Errors	45	29
Ball handling errors	3	4
ATTENDANCE		
Total	12075	22670
Dates/Avg Per Date	5/2415	7/3239
Neutral Site #/Avg	5/904	-
Current win streak	0	-
Home win streak	0	-

Team Results

Date	Opponent		Score	Score-by-set	Att.
08/30/2024	Kansas St.	W	3-1	25-21,18-25,25-22,25-23	2415
08/31/2024	UMBC	W	3-0	25-20,25-20,25-17	2415
09/01/2024	UC Davis	W	3-0	25-18,25-19,25-18	2415
09/05/2024	vs California	W	3-1	29-27,25-12,18-25,25-23	52
09/06/2024	at Utah	W	3-0	29-27,25-20,25-13	3766
09/07/2024	at Utah St.	W	3-0	25-18,25-16,25-22	1029
09/13/2024	vs Houston	W	3-0	25-12,25-21,25-20	891
09/14/2024	vs Kentucky	W	3-1	21-25,25-13,25-23,25-16	1883
09/19/2024	at Kansas	L	1-3	29-31,25-21,22-25,23-25	1640
09/20/2024	vs Creighton	L	1-3	21-25,25-17,16-25,25-27	1696
09/21/2024	vs Tulsa	W	3-0	25-21,25-17,25-10	0
* 09/25/2024	Penn St.	L	0-3	14-25,21-25,20-25	2415
* 09/28/2024	at Minnesota	W	3-2	26-24,23-25,25-20,23-25,15-10	4866
* 10/04/2024	at Northwestern	W	3-1	23-25,25-20,25-16,29-27	1618
* 10/06/2024	Michigan St.	W	3-0	25-19,25-22,25-18	2415
* 10/11/2024	at Nebraska	L	2-3	22-25,25-22,25-23,22-25,15-17	8715
* 10/12/2024	at Iowa	W	3-1	25-17,19-25,25-18,25-21	1036



2024-25 Purdue Women's Volleyball
Individual Match-by-Match
All games

Page 1/13
as of Oct 13, 2024

#1 WILLIAMS, Rachel

		Attack					Set			Serve				Recept			Blocking					Team			
Date	Opponent	SP	K	E	TA	PCT	A	TA	PCT	SA	SE	TA	PCT	RE	TA	PCT	DIG	BS	BA	BE	TOTAL	BHE	POINTS	HIT%	SCORE
08/31/2024	UMBC	2	0	0	0	.000	0	0	.000	1	0	10	1.000	0	0	.000	4	0	0	0	0.0	0	1.0	.371	3-0
09/01/2024	UC Davis	3	0	0	0	.000	0	0	.000	0	1	11	.909	0	0	.000	0	0	0	0	0.0	0	0.0	.450	3-0
09/05/2024	vs California	3	1	0	1	1.000	0	0	.000	0	1	10	.900	0	0	.000	1	0	0	0	0.0	0	1.0	.235	3-1
09/06/2024	at Utah	2	0	0	0	.000	0	0	.000	1	1	3	.667	0	0	.000	1	0	0	0	0.0	0	1.0	.246	3-0
09/07/2024	at Utah St.	1	0	0	0	.000	0	0	.000	0	0	1	1.000	0	0	.000	0	0	0	0	0.0	0	0.0	.290	3-0
09/13/2024	vs Houston	1	0	0	0	.000	0	0	.000	1	0	2	1.000	0	0	.000	0	0	0	0	0.0	0	1.0	.292	3-0
09/14/2024	vs Kentucky	4	0	0	0	.000	0	0	.000	0	1	4	.750	0	0	.000	0	0	0	0	0.0	0	0.0	.310	3-1
09/19/2024	at Kansas	3	0	0	0	.000	0	0	.000	0	0	4	1.000	0	0	.000	0	0	0	0	0.0	0	0.0	.278	1-3
09/20/2024	vs Creighton	3	0	0	1	.000	1	2	.500	1	2	15	.867	0	0	.000	2	0	0	0	0.0	0	1.0	.209	1-3
09/21/2024	vs Tulsa	2	0	0	0	.000	0	0	.000	1	0	6	1.000	0	0	.000	1	0	0	0	0.0	0	1.0	.365	3-0
09/25/2024	Penn St.	1	0	0	1	.000	0	0	.000	0	0	1	1.000	0	0	.000	0	0	0	0	0.0	0	0.0	.176	0-3
09/28/2024	at Minnesota	3	0	0	0	.000	0	0	.000	0	0	3	1.000	0	0	.000	0	0	0	0	0.0	0	0.0	.252	3-2
10/04/2024	at Northwestern	1	0	0	0	.000	0	0	.000	0	1	1	.000	0	0	.000	0	0	0	0	0.0	0	0.0	.287	3-1
10/06/2024	Michigan St.	2	0	0	0	.000	0	0	.000	0	0	4	1.000	0	0	.000	0	0	0	0	0.0	0	0.0	.252	3-0
10/11/2024	at Nebraska	5	0	0	0	.000	0	0	.000	0	4	12	.667	0	0	.000	0	0	0	0	0.0	0	0.0	.311	2-3
Totals		36	1	0	3	.333	1	2	.500	5	11	87	.874	0	0	.000	9	0	0	0	0.0	0	6.0		

Player Averages

Sets Played	Kills per set	Assists per set	Service aces per set	Digs per set	Blocks per set	Points per set
36	0.03	0.03	0.14	0.25	0.00	0.17



2024-25 Purdue Women's Volleyball
Individual Match-by-Match
All games

Page 2/13
as of Oct 13, 2024

#2 CHICOINE, Chloe

Date	Opponent	SP	Attack				Set			Serve				Recept			Blocking					Team			
			K	E	TA	PCT	A	TA	PCT	SA	SE	TA	PCT	RE	TA	PCT	DIG	BS	BA	BE	TOTAL	BHE	POINTS	HIT%	SCORE
08/30/2024	Kansas St.	*4	17	6	52	.212	0	4	.000	0	1	17	.941	2	12	.833	6	0	1	0	1.0	0	17.5	.234	3-1
08/31/2024	UMBC	*3	11	2	33	.273	2	5	.400	1	3	9	.667	0	14	1.000	11	0	1	0	1.0	0	12.5	.371	3-0
09/01/2024	UC Davis	*3	9	2	26	.269	4	5	.800	1	2	16	.875	0	12	1.000	5	0	0	1	0.0	0	10.0	.450	3-0
09/05/2024	vs California	*4	10	6	36	.111	0	3	.000	1	1	21	.952	0	10	1.000	15	0	1	0	1.0	0	11.5	.235	3-1
09/06/2024	at Utah	*3	8	4	31	.129	1	3	.333	1	0	23	1.000	0	2	1.000	13	0	0	0	0.0	0	9.0	.246	3-0
09/07/2024	at Utah St.	*3	14	5	29	.310	0	2	.000	0	0	10	1.000	0	19	1.000	8	2	2	0	4.0	0	17.0	.290	3-0
09/13/2024	vs Houston	*3	11	4	27	.259	0	3	.000	2	1	21	.952	0	13	1.000	10	0	3	0	3.0	0	14.5	.292	3-0
09/14/2024	vs Kentucky	*4	10	3	32	.219	0	5	.000	1	0	22	1.000	0	4	1.000	9	0	2	0	2.0	0	12.0	.310	3-1
09/19/2024	at Kansas	*4	16	3	39	.333	2	5	.400	1	2	24	.917	1	15	.933	12	0	0	0	0.0	0	17.0	.278	1-3
09/20/2024	vs Creighton	*4	14	8	44	.136	1	8	.125	0	0	15	1.000	1	18	.944	6	0	0	1	0.0	0	14.0	.209	1-3
09/21/2024	vs Tulsa	*3	10	2	23	.348	2	6	.333	0	1	17	.941	1	4	.750	6	0	2	0	2.0	0	11.0	.365	3-0
09/25/2024	Penn St.	*3	10	5	29	.172	1	4	.250	0	2	11	.818	1	12	.917	11	0	0	0	0.0	0	10.0	.176	0-3
09/28/2024	at Minnesota	*5	14	8	48	.125	1	7	.143	0	2	19	.895	0	8	1.000	11	0	0	0	0.0	0	14.0	.252	3-2
10/04/2024	at Northwestern	*4	10	3	33	.212	1	9	.111	1	2	19	.895	0	26	1.000	3	0	2	0	2.0	0	12.0	.287	3-1
10/06/2024	Michigan St.	*3	10	6	41	.098	0	1	.000	3	2	17	.882	0	9	1.000	13	0	1	0	1.0	0	13.5	.252	3-0
10/11/2024	at Nebraska	*5	22	4	55	.327	5	9	.556	0	1	26	.962	0	5	1.000	13	0	1	0	1.0	0	22.5	.311	2-3
10/12/2024	at Iowa	*4	7	7	36	.000	1	1	1.000	1	1	20	.950	1	20	.950	6	0	1	0	1.0	0	8.5	.213	3-1
Totals		62	203	78	614	.204	21	80	.263	13	21	307	.932	7	203	.966	158	2	17	2	19.0	0	226.5		

Player Averages

Sets Played	Kills per set	Assists per set	Service aces per set	Digs per set	Blocks per set	Points per set
62	3.27	0.34	0.21	2.55	0.31	3.65



2024-25 Purdue Women's Volleyball
Individual Match-by-Match
All games

Page 3/13
as of Oct 13, 2024

#3 MCALEER, Ryan

Date	Opponent	SP	Attack				Set			Serve				Recept			Blocking					Team			
			K	E	TA	PCT	A	TA	PCT	SA	SE	TA	PCT	RE	TA	PCT	DIG	BS	BA	BE	TOTAL	BHE	POINTS	HIT%	SCORE
08/30/2024	Kansas St.	*4	0	0	0	.000	0	2	.000	0	4	18	.778	0	19	1.000	11	0	0	0	0.0	0	0.0	.234	3-1
08/31/2024	UMBC	*2	0	0	0	.000	1	2	.500	0	0	10	1.000	2	12	.833	3	0	0	0	0.0	0	0.0	.371	3-0
09/01/2024	UC Davis	*3	0	0	0	.000	0	0	.000	0	0	8	1.000	0	16	1.000	5	0	0	0	0.0	0	0.0	.450	3-0
09/05/2024	vs California	*4	0	0	0	.000	0	1	.000	0	1	14	.929	3	32	.906	7	0	0	0	0.0	0	0.0	.235	3-1
09/06/2024	at Utah	*3	0	0	0	.000	1	3	.333	0	2	9	.778	0	4	1.000	7	0	0	0	0.0	0	0.0	.246	3-0
09/07/2024	at Utah St.	*3	0	0	0	.000	0	1	.000	1	1	16	.938	0	5	1.000	5	0	0	0	0.0	0	1.0	.290	3-0
09/13/2024	vs Houston	*3	0	0	0	.000	3	5	.600	1	0	8	1.000	0	15	1.000	6	0	0	0	0.0	0	1.0	.292	3-0
09/14/2024	vs Kentucky	*4	1	0	1	1.000	1	1	1.000	0	2	15	.867	0	18	1.000	11	0	0	0	0.0	0	1.0	.310	3-1
09/19/2024	at Kansas	*4	0	1	1	-1.000	1	2	.500	0	1	12	.917	0	5	1.000	10	0	0	0	0.0	0	0.0	.278	1-3
09/20/2024	vs Creighton	4	0	0	0	.000	1	2	.500	0	1	13	.923	1	18	.944	7	0	0	0	0.0	0	0.0	.209	1-3
09/21/2024	vs Tulsa	3	1	0	1	1.000	3	4	.750	0	2	12	.833	0	10	1.000	6	0	0	0	0.0	0	1.0	.365	3-0
09/25/2024	Penn St.	3	0	0	0	.000	0	0	.000	0	1	8	.875	0	3	1.000	5	0	0	0	0.0	0	0.0	.176	0-3
09/28/2024	at Minnesota	*5	0	0	0	.000	2	7	.286	6	3	30	.900	4	31	.871	10	0	0	0	0.0	0	6.0	.252	3-2
10/04/2024	at Northwestern	4	0	0	1	.000	1	4	.250	1	2	17	.882	1	11	.909	11	0	0	0	0.0	0	1.0	.287	3-1
10/06/2024	Michigan St.	3	0	0	0	.000	0	2	.000	0	2	13	.846	0	9	1.000	11	0	0	0	0.0	0	0.0	.252	3-0
10/11/2024	at Nebraska	*5	0	0	0	.000	2	4	.500	0	3	14	.786	0	14	1.000	13	0	0	0	0.0	0	0.0	.311	2-3
10/12/2024	at Iowa	*4	0	0	0	.000	2	2	1.000	1	0	13	1.000	1	11	.909	7	0	0	0	0.0	0	1.0	.213	3-1
Totals		61	2	1	4	.250	18	42	.429	10	25	230	.891	12	233	.948	135	0	0	0	0.0	0	12.0		

Player Averages

Sets Played	Kills per set	Assists per set	Service aces per set	Digs per set	Blocks per set	Points per set
61	0.03	0.30	0.16	2.21	0.00	0.20



2024-25 Purdue Women's Volleyball
Individual Match-by-Match
All games

Page 4/13
as of Oct 13, 2024

#4 WOLLARD, Kenna

Date	Opponent	SP	Attack				Set			Serve				Recept			Blocking					Team			
			K	E	TA	PCT	A	TA	PCT	SA	SE	TA	PCT	RE	TA	PCT	DIG	BS	BA	BE	TOTAL	BHE	POINTS	HIT%	SCORE
08/30/2024	Kansas St.	4	8	2	20	.300	0	0	.000	0	0	0	.000	0	0	.000	1	0	2	1	2.0	0	9.0	.234	3-1
09/01/2024	UC Davis	3	10	2	17	.471	0	0	.000	0	0	0	.000	0	1	1.000	1	0	2	1	2.0	0	11.0	.450	3-0
09/05/2024	vs California	4	11	2	24	.375	0	1	.000	0	0	0	.000	0	0	.000	3	0	3	2	3.0	0	12.5	.235	3-1
09/06/2024	at Utah	3	7	2	15	.333	0	0	.000	0	0	0	.000	0	0	.000	3	0	1	0	1.0	0	7.5	.246	3-0
09/07/2024	at Utah St.	3	5	2	10	.300	0	1	.000	0	0	0	.000	0	0	.000	0	0	2	0	2.0	0	6.0	.290	3-0
09/13/2024	vs Houston	2	3	3	13	.000	0	0	.000	0	0	0	.000	0	0	.000	3	0	5	0	5.0	0	5.5	.292	3-0
09/14/2024	vs Kentucky	4	6	2	13	.308	0	0	.000	0	0	0	.000	0	0	.000	2	0	1	0	1.0	0	6.5	.310	3-1
09/19/2024	at Kansas	4	9	7	22	.091	0	0	.000	0	0	0	.000	0	0	.000	0	0	2	0	2.0	0	10.0	.278	1-3
09/20/2024	vs Creighton	*4	3	3	13	.000	0	0	.000	0	0	0	.000	0	0	.000	1	1	1	1	2.0	0	4.5	.209	1-3
09/21/2024	vs Tulsa	*2	2	0	7	.286	0	1	.000	0	0	1	1.000	0	1	1.000	0	0	0	0	0.0	0	2.0	.365	3-0
09/25/2024	Penn St.	*3	4	3	17	.059	0	1	.000	0	0	0	.000	0	0	.000	2	0	1	0	1.0	0	4.5	.176	0-3
09/28/2024	at Minnesota	5	7	0	15	.467	0	6	.000	0	0	0	.000	0	0	.000	3	0	2	1	2.0	0	8.0	.252	3-2
10/04/2024	at Northwestern	*4	18	4	32	.438	0	2	.000	0	0	0	.000	0	0	.000	2	0	1	0	1.0	0	18.5	.287	3-1
10/06/2024	Michigan St.	*3	8	2	20	.300	0	2	.000	0	0	0	.000	0	0	.000	3	0	3	0	3.0	0	9.5	.252	3-0
10/11/2024	at Nebraska	5	7	2	17	.294	0	2	.000	0	0	0	.000	0	0	.000	1	0	4	1	4.0	0	9.0	.311	2-3
10/12/2024	at Iowa	4	8	5	20	.150	0	2	.000	0	0	0	.000	0	0	.000	1	0	4	0	4.0	0	10.0	.213	3-1
Totals		57	116	41	275	.273	0	18	.000	0	0	1	1.000	0	2	1.000	26	1	34	7	35.0	0	134.0		

Player Averages

Sets Played	Kills per set	Assists per set	Service aces per set	Digs per set	Blocks per set	Points per set
57	2.04	0.00	0.00	0.46	0.61	2.35



2024-25 Purdue Women's Volleyball
Individual Match-by-Match
All games

Page 5/13
as of Oct 13, 2024

#5 ANDERSON, Taylor

Date	Opponent	SP	Attack				Set			Serve				Recept			Blocking					Team			
			K	E	TA	PCT	A	TA	PCT	SA	SE	TA	PCT	RE	TA	PCT	DIG	BS	BA	BE	TOTAL	BHE	POINTS	HIT%	SCORE
08/30/2024	Kansas St.	*4	0	1	2	-.500	43	109	.394	1	1	13	.923	0	0	.000	7	0	8	0	8.0	0	5.0	.234	3-1
08/31/2024	UMBC	*3	3	0	4	.750	34	76	.447	0	2	8	.750	0	0	.000	5	0	3	0	3.0	0	4.5	.371	3-0
09/01/2024	UC Davis	*3	1	0	3	.333	45	78	.577	2	2	11	.818	0	0	.000	9	1	1	0	2.0	0	4.5	.450	3-0
09/05/2024	vs California	*4	1	1	3	.000	52	118	.441	3	2	20	.900	0	1	1.000	11	0	2	0	2.0	0	5.0	.235	3-1
09/06/2024	at Utah	*3	3	0	5	.600	34	85	.400	0	1	14	.929	0	0	.000	10	0	7	0	7.0	0	6.5	.246	3-0
09/07/2024	at Utah St.	*3	0	0	1	.000	29	69	.420	0	2	10	.800	0	0	.000	3	0	2	1	2.0	0	1.0	.290	3-0
09/13/2024	vs Houston	*3	4	0	7	.571	31	70	.443	0	1	10	.900	0	2	1.000	7	1	1	0	2.0	0	5.5	.292	3-0
09/14/2024	vs Kentucky	*4	2	0	6	.333	28	86	.326	2	1	15	.933	0	0	.000	8	0	4	0	4.0	0	6.0	.310	3-1
09/19/2024	at Kansas	*4	2	0	7	.286	49	128	.383	1	2	17	.882	0	0	.000	11	0	7	0	7.0	2	6.5	.278	1-3
09/20/2024	vs Creighton	*4	2	0	7	.286	44	124	.355	1	2	13	.846	0	0	.000	9	0	5	0	5.0	0	5.5	.209	1-3
09/21/2024	vs Tulsa	*3	2	2	10	.000	27	57	.474	0	1	7	.857	0	0	.000	5	0	3	0	3.0	0	3.5	.365	3-0
09/25/2024	Penn St.	*3	0	1	5	-.200	29	84	.345	0	0	11	1.000	0	0	.000	2	0	1	0	1.0	0	0.5	.176	0-3
09/28/2024	at Minnesota	*5	3	3	9	.000	54	130	.415	1	0	14	1.000	0	0	.000	12	0	4	0	4.0	0	6.0	.252	3-2
10/04/2024	at Northwestern	*4	2	1	8	.125	47	111	.423	1	4	15	.733	0	0	.000	13	1	0	0	1.0	1	4.0	.287	3-1
10/06/2024	Michigan St.	*3	0	0	3	.000	37	101	.366	0	0	14	1.000	0	0	.000	8	0	2	0	2.0	0	1.0	.252	3-0
10/11/2024	at Nebraska	*5	3	0	4	.750	52	140	.371	1	3	18	.833	0	0	.000	10	1	6	1	7.0	0	8.0	.311	2-3
10/12/2024	at Iowa	*4	6	1	8	.625	42	110	.382	1	0	11	1.000	1	1	.000	7	0	0	0	0.0	0	7.0	.213	3-1
Totals		62	34	10	92	.261	677	1676	.404	14	24	221	.891	1	4	.750	137	4	56	2	60.0	3	80.0		

Player Averages

Sets Played	Kills per set	Assists per set	Service aces per set	Digs per set	Blocks per set	Points per set
62	0.55	10.92	0.23	2.21	0.97	1.29



2024-25 Purdue Women's Volleyball
Individual Match-by-Match
All games

Page 6/13
as of Oct 13, 2024

#7 COLVIN, Raven

			Attack				Set			Serve				Recept			Blocking				Team				
Date	Opponent	SP	K	E	TA	PCT	A	TA	PCT	SA	SE	TA	PCT	RE	TA	PCT	DIG	BS	BA	BE	TOTAL	BHE	POINTS	HIT%	SCORE
08/30/2024	Kansas St.	*4	7	3	14	.286	0	4	.000	3	4	18	.778	0	2	1.000	1	1	9	0	10.0	0	15.5	.234	3-1
08/31/2024	UMBC	*3	7	3	13	.308	0	1	.000	0	2	9	.778	0	0	.000	1	0	5	2	5.0	0	9.5	.371	3-0
09/01/2024	UC Davis	*3	12	1	15	.733	0	0	.000	0	2	2	.000	1	1	.000	0	1	3	2	4.0	0	14.5	.450	3-0
09/05/2024	vs California	*4	16	5	26	.423	0	0	.000	2	4	12	.667	0	0	.000	4	1	5	0	6.0	0	21.5	.235	3-1
09/06/2024	at Utah	*3	3	2	11	.091	0	1	.000	1	1	9	.889	0	0	.000	2	0	9	0	9.0	0	8.5	.246	3-0
09/07/2024	at Utah St.	*3	7	0	10	.700	1	2	.500	1	1	10	.900	0	0	.000	1	3	7	0	10.0	0	14.5	.290	3-0
09/13/2024	vs Houston	*3	5	1	7	.571	0	1	.000	1	2	10	.800	0	0	.000	2	1	3	1	4.0	0	8.5	.292	3-0
09/14/2024	vs Kentucky	*4	9	1	14	.571	1	2	.500	2	2	10	.800	0	0	.000	5	1	6	0	7.0	0	15.0	.310	3-1
09/19/2024	at Kansas	*4	14	3	25	.440	0	1	.000	2	2	13	.846	0	0	.000	3	0	7	1	7.0	0	19.5	.278	1-3
09/20/2024	vs Creighton	*4	8	1	15	.467	0	1	.000	0	1	7	.857	0	0	.000	1	1	5	0	6.0	0	11.5	.209	1-3
09/21/2024	vs Tulsa	*3	7	1	13	.462	0	3	.000	2	1	7	.857	0	0	.000	1	2	7	1	9.0	0	14.5	.365	3-0
09/25/2024	Penn St.	*3	6	2	13	.308	0	1	.000	1	2	13	.846	0	0	.000	3	0	1	1	1.0	0	7.5	.176	0-3
09/28/2024	at Minnesota	*5	19	7	31	.387	0	2	.000	7	3	23	.870	0	0	.000	5	1	4	0	5.0	0	29.0	.252	3-2
10/04/2024	at Northwestern	*4	14	3	24	.458	0	0	.000	0	1	12	.917	0	0	.000	1	1	2	1	3.0	0	16.0	.287	3-1
10/06/2024	Michigan St.	*3	8	1	15	.467	0	2	.000	0	1	3	.667	0	0	.000	0	2	4	2	6.0	0	12.0	.252	3-0
10/11/2024	at Nebraska	*5	5	5	20	.000	1	2	.500	0	3	3	.000	0	0	.000	0	2	9	0	11.0	0	11.5	.311	2-3
10/12/2024	at Iowa	*4	12	4	23	.348	0	1	.000	4	2	16	.875	0	1	1.000	4	0	3	0	3.0	0	17.5	.213	3-1
Totals		62	159	43	289	.401	3	24	.125	26	34	177	.808	1	4	.750	34	17	89	11	106.0	0	246.5		

Player Averages

Sets Played	Kills per set	Assists per set	Service aces per set	Digs per set	Blocks per set	Points per set
62	2.56	0.05	0.42	0.55	1.71	3.98



2024-25 Purdue Women's Volleyball
Individual Match-by-Match
All games

Page 7/13
as of Oct 13, 2024

#8 GRAY, Raven

			Attack				Set			Serve				Recept				Blocking					Team			
Date	Opponent	SP	K	E	TA	PCT	A	TA	PCT	SA	SE	TA	PCT	RE	TA	PCT	DIG	BS	BA	BE	TOTAL	BHE	POINTS	HIT%	SCORE	
08/31/2024	UMBC	1	1	0	1	1.000	0	1	.000	0	0	0	.000	0	0	.000	0	0	0	0	0.0	0	1.0	.371	3-0	
Totals			1	1	0	1	1.000	0	1	.000	0	0	0	.000	0	0	.000	0	0	0	0	0.0	0	1.0		

Player Averages

Sets Played	Kills per set	Assists per set	Service aces per set	Digs per set	Blocks per set	Points per set
1	1.00	0.00	0.00	0.00	0.00	1.00



2024-25 Purdue Women's Volleyball
Individual Match-by-Match
All games

Page 8/13
as of Oct 13, 2024

#9 MYERS, Lourdes

			Attack				Set			Serve				Recept				Blocking					Team			
Date	Opponent	SP	K	E	TA	PCT	A	TA	PCT	SA	SE	TA	PCT	RE	TA	PCT	DIG	BS	BA	BE	TOTAL	BHE	POINTS	HIT%	SCORE	
08/30/2024	Kansas St.	*4	4	1	9	.333	0	1	.000	0	0	0	.000	0	2	1.000	0	0	6	4	6.0	0	7.0	.234	3-1	
08/31/2024	UMBC	*3	3	1	9	.222	0	0	.000	0	0	0	.000	0	0	.000	1	0	5	1	5.0	0	5.5	.371	3-0	
09/01/2024	UC Davis	*3	6	1	9	.556	0	0	.000	0	0	0	.000	0	0	.000	2	1	1	0	2.0	0	7.5	.450	3-0	
09/05/2024	vs California	*4	6	2	13	.308	0	1	.000	0	0	0	.000	0	2	1.000	0	0	4	1	4.0	0	8.0	.235	3-1	
09/06/2024	at Utah	*3	2	1	7	.143	0	0	.000	0	0	0	.000	0	0	.000	1	0	2	2	2.0	0	3.0	.246	3-0	
09/07/2024	at Utah St.	*2	2	1	3	.333	0	1	.000	0	0	0	.000	0	0	.000	1	1	0	0	1.0	0	3.0	.290	3-0	
09/13/2024	vs Houston	*3	1	0	6	.167	0	1	.000	0	0	0	.000	0	3	1.000	1	1	7	1	8.0	0	5.5	.292	3-0	
09/14/2024	vs Kentucky	*4	1	1	3	.000	0	1	.000	0	0	0	.000	0	0	.000	2	0	2	0	2.0	0	2.0	.310	3-1	
09/19/2024	at Kansas	*1	1	1	4	.000	0	0	.000	0	0	0	.000	0	0	.000	0	0	1	3	1.0	0	1.5	.278	1-3	
09/20/2024	vs Creighton	*4	5	1	12	.333	0	1	.000	0	0	0	.000	0	0	.000	2	0	2	2	2.0	0	6.0	.209	1-3	
09/21/2024	vs Tulsa	*3	6	1	8	.625	0	0	.000	0	0	0	.000	0	1	1.000	0	0	2	0	2.0	0	7.0	.365	3-0	
09/25/2024	Penn St.	*3	3	0	7	.429	0	0	.000	0	0	0	.000	0	0	.000	2	0	1	0	1.0	0	3.5	.176	0-3	
09/28/2024	at Minnesota	*5	4	1	9	.333	0	1	.000	0	0	0	.000	0	1	1.000	1	0	4	2	4.0	0	6.0	.252	3-2	
10/04/2024	at Northwestern	*4	4	1	9	.333	0	1	.000	0	0	0	.000	0	0	.000	2	0	3	3	3.0	0	5.5	.287	3-1	
10/06/2024	Michigan St.	*3	5	0	9	.556	0	0	.000	0	0	0	.000	1	2	.500	1	0	5	0	5.0	0	7.5	.252	3-0	
10/11/2024	at Nebraska	*5	5	1	8	.500	0	0	.000	0	0	0	.000	0	1	1.000	0	0	3	0	3.0	0	6.5	.311	2-3	
10/12/2024	at Iowa	*4	5	1	8	.500	0	1	.000	0	0	0	.000	0	2	1.000	0	1	4	0	5.0	0	8.0	.213	3-1	
Totals		58	63	15	133	.361	0	9	.000	0	0	0	.000	1	14	.929	16	4	52	19	56.0	0	93.0			

Player Averages

Sets Played	Kills per set	Assists per set	Service aces per set	Digs per set	Blocks per set	Points per set
58	1.09	0.00	0.00	0.28	0.97	1.60



2024-25 Purdue Women's Volleyball
Individual Match-by-Match
All games

Page 9/13
as of Oct 13, 2024

#10 HORNING, Ali

Date	Opponent	SP	Attack				Set			Serve				Recept			DIG	Blocking				Team			
			K	E	TA	PCT	A	TA	PCT	SA	SE	TA	PCT	RE	TA	PCT		BS	BA	BE	TOTAL	BHE	POINTS	HIT%	SCORE
08/30/2024	Kansas St.	4	0	0	0	.000	6	17	.353	1	0	14	1.000	4	36	.889	17	0	0	0	0.0	0	1.0	.234	3-1
08/31/2024	UMBC	3	0	0	0	.000	1	7	.143	0	0	15	1.000	2	10	.800	14	0	0	0	0.0	0	0.0	.371	3-0
09/01/2024	UC Davis	3	0	0	0	.000	3	11	.273	1	1	15	.933	0	9	1.000	18	0	0	0	0.0	0	1.0	.450	3-0
09/05/2024	vs California	4	0	0	0	.000	3	18	.167	0	0	3	1.000	1	16	.938	18	0	1	0	1.0	0	0.5	.235	3-1
09/06/2024	at Utah	3	0	0	0	.000	1	14	.071	1	0	9	1.000	1	36	.972	14	0	0	0	0.0	0	1.0	.246	3-0
09/07/2024	at Utah St.	3	0	0	0	.000	3	6	.500	0	0	6	1.000	0	18	1.000	8	0	0	0	0.0	0	0.0	.290	3-0
09/13/2024	vs Houston	3	0	0	0	.000	1	8	.125	0	0	0	.000	0	7	1.000	9	0	0	0	0.0	0	0.0	.292	3-0
09/14/2024	vs Kentucky	4	0	0	1	.000	7	14	.500	0	0	1	1.000	1	24	.958	10	0	0	0	0.0	0	0.0	.310	3-1
09/19/2024	at Kansas	4	0	0	0	.000	5	13	.385	0	0	1	1.000	0	42	1.000	14	0	0	0	0.0	0	0.0	.278	1-3
09/20/2024	vs Creighton	4	0	0	1	.000	3	9	.333	0	0	0	.000	0	20	1.000	15	0	0	0	0.0	0	0.0	.209	1-3
09/21/2024	vs Tulsa	3	0	0	0	.000	0	7	.000	0	0	2	1.000	1	21	.952	6	0	0	0	0.0	0	0.0	.365	3-0
09/25/2024	Penn St.	3	0	0	0	.000	1	3	.333	0	1	4	.750	0	18	1.000	11	0	0	0	0.0	0	0.0	.176	0-3
09/28/2024	at Minnesota	5	0	0	0	.000	3	14	.214	0	0	0	.000	1	38	.974	24	0	0	0	0.0	0	0.0	.252	3-2
10/04/2024	at Northwestern	4	0	0	1	.000	2	10	.200	0	0	0	.000	0	27	1.000	18	0	0	0	0.0	0	0.0	.287	3-1
10/06/2024	Michigan St.	3	0	0	0	.000	4	8	.500	0	0	0	.000	2	10	.800	22	0	0	0	0.0	0	0.0	.252	3-0
10/11/2024	at Nebraska	5	0	0	0	.000	6	12	.500	0	1	9	.889	2	51	.961	12	0	0	0	0.0	0	0.0	.311	2-3
10/12/2024	at Iowa	4	0	0	0	.000	2	12	.167	0	1	13	.923	0	21	1.000	17	0	0	0	0.0	0	0.0	.213	3-1
Totals		62	0	0	3	.000	51	183	.279	3	4	92	.957	15	404	.963	247	0	1	0	1.0	0	3.5		

Player Averages

Sets Played	Kills per set	Assists per set	Service aces per set	Digs per set	Blocks per set	Points per set
62	0.00	0.82	0.05	3.98	0.02	0.06



2024-25 Purdue Women's Volleyball
Individual Match-by-Match
All games

Page 10/13
as of Oct 13, 2024

#11 SHONDELL, Allie

			Attack				Set			Serve				Recept			Blocking					Team			
Date	Opponent	SP	K	E	TA	PCT	A	TA	PCT	SA	SE	TA	PCT	RE	TA	PCT	DIG	BS	BA	BE	TOTAL	BHE	POINTS	HIT%	SCORE
08/31/2024	UMBC	1	0	0	0	.000	3	6	.500	0	1	2	.500	0	0	.000	0	0	0	0	0.0	0	0.0	.371	3-0
09/07/2024	at Utah St.	1	0	1	1	-1.000	3	8	.375	0	0	0	.000	0	0	.000	1	0	1	0	1.0	0	0.5	.290	3-0
09/21/2024	vs Tulsa	1	0	0	0	.000	5	8	.625	0	0	0	.000	0	0	.000	0	0	2	0	2.0	0	1.0	.365	3-0
Totals		3	0	1	1	-1.000	11	22	.500	0	1	2	.500	0	0	.000	1	0	3	0	3.0	0	1.5		

Player Averages

Sets Played	Kills per set	Assists per set	Service aces per set	Digs per set	Blocks per set	Points per set
3	0.00	3.67	0.00	0.33	1.00	0.50



2024-25 Purdue Women's Volleyball
Individual Match-by-Match
All games

Page 11/13
as of Oct 13, 2024

#15 CARR, Lizzie

			Attack				Set			Serve				Recept				Blocking				Team			
Date	Opponent	SP	K	E	TA	PCT	A	TA	PCT	SA	SE	TA	PCT	RE	TA	PCT	DIG	BS	BA	BE	TOTAL	BHE	POINTS	HIT%	SCORE
08/31/2024	UMBC	3	6	0	15	.400	0	0	.000	0	0	0	.000	0	0	.000	0	0	4	0	4.0	0	8.0	.371	3-0
09/06/2024	at Utah	1	0	0	0	.000	0	0	.000	0	0	0	.000	0	0	.000	0	0	0	0	0.0	0	0.0	.246	3-0
09/07/2024	at Utah St.	2	2	0	5	.400	0	0	.000	0	0	0	.000	0	0	.000	0	1	2	0	3.0	0	4.0	.290	3-0
09/13/2024	vs Houston	1	3	0	3	1.000	0	1	.000	0	0	0	.000	0	0	.000	0	0	0	0	0.0	0	3.0	.292	3-0
09/19/2024	at Kansas	3	5	3	11	.182	0	2	.000	0	0	0	.000	0	1	1.000	0	0	1	1	1.0	0	5.5	.278	1-3
09/21/2024	vs Tulsa	2	5	1	10	.400	0	1	.000	0	0	0	.000	0	0	.000	1	0	1	0	1.0	0	5.5	.365	3-0
Totals		12	21	4	44	.386	0	4	.000	0	0	0	.000	0	1	1.000	1	1	8	1	9.0	0	26.0		

Player Averages

Sets Played	Kills per set	Assists per set	Service aces per set	Digs per set	Blocks per set	Points per set
12	1.75	0.00	0.00	0.08	0.75	2.17



2024-25 Purdue Women's Volleyball
Individual Match-by-Match
All games

Page 12/13
as of Oct 13, 2024

#17 HUDSON, Eva

Date	Opponent	SP	Attack				Set			Serve				Recept			Blocking					Team			
			K	E	TA	PCT	A	TA	PCT	SA	SE	TA	PCT	RE	TA	PCT	DIG	BS	BA	BE	TOTAL	BHE	POINTS	HIT%	SCORE
08/30/2024	Kansas St.	*4	16	5	48	.229	0	0	.000	0	1	12	.917	0	12	1.000	12	1	4	1	5.0	0	19.0	.234	3-1
08/31/2024	UMBC	*3	15	1	30	.467	0	4	.000	0	1	4	.750	1	8	.875	8	0	2	0	2.0	0	16.0	.371	3-0
09/01/2024	UC Davis	*3	15	2	30	.433	0	1	.000	0	1	11	.909	0	13	1.000	9	0	1	1	1.0	0	15.5	.450	3-0
09/05/2024	vs California	*4	14	7	50	.140	0	6	.000	0	1	16	.938	1	22	.955	8	0	4	0	4.0	0	16.0	.235	3-1
09/06/2024	at Utah	*3	18	4	45	.311	0	1	.000	3	0	11	1.000	3	10	.700	6	0	3	0	3.0	0	22.5	.246	3-0
09/07/2024	at Utah St.	*3	10	4	34	.176	0	0	.000	0	1	13	.923	1	7	.857	8	1	2	0	3.0	0	12.0	.290	3-0
09/13/2024	vs Houston	*3	10	3	26	.269	1	1	1.000	0	1	11	.909	0	7	1.000	6	0	1	0	1.0	0	10.5	.292	3-0
09/14/2024	vs Kentucky	*4	20	6	46	.304	1	3	.333	1	2	12	.833	1	11	.909	3	0	1	0	1.0	0	21.5	.310	3-1
09/19/2024	at Kansas	*4	17	1	53	.302	1	3	.333	0	0	14	1.000	1	25	.960	11	0	0	0	0.0	0	17.0	.278	1-3
09/20/2024	vs Creighton	*4	19	7	55	.218	0	3	.000	0	0	11	1.000	0	25	1.000	9	0	1	0	1.0	0	19.5	.209	1-3
09/21/2024	vs Tulsa	*3	11	2	24	.375	1	1	1.000	0	1	6	.833	0	5	1.000	4	0	1	1	1.0	0	11.5	.365	3-0
09/25/2024	Penn St.	*3	10	4	30	.200	0	1	.000	0	1	5	.800	1	31	.968	5	0	0	0	0.0	0	10.0	.176	0-3
09/28/2024	at Minnesota	*5	18	5	51	.255	1	4	.250	0	1	7	.857	2	17	.882	11	0	2	0	2.0	0	19.0	.252	3-2
10/04/2024	at Northwestern	*4	13	6	42	.167	0	5	.000	3	0	17	1.000	1	13	.923	16	0	2	0	2.0	0	17.0	.287	3-1
10/06/2024	Michigan St.	*3	11	2	35	.257	0	0	.000	0	1	11	.909	1	22	.955	9	0	3	0	3.0	0	12.5	.252	3-0
10/11/2024	at Nebraska	*5	26	4	63	.349	0	1	.000	0	2	19	.895	1	33	.970	15	0	1	0	1.0	0	26.5	.311	2-3
10/12/2024	at Iowa	*4	18	8	46	.217	2	3	.667	3	0	18	1.000	0	20	1.000	8	0	2	0	2.0	0	22.0	.213	3-1
Totals		62	261	71	708	.268	7	37	.189	10	14	198	.929	14	281	.950	148	2	30	3	32.0	0	288.0		

Player Averages

Sets Played	Kills per set	Assists per set	Service aces per set	Digs per set	Blocks per set	Points per set
62	4.21	0.11	0.16	2.39	0.52	4.65



2024-25 Purdue Women's Volleyball
Individual Match-by-Match
All games

Page 13/13
as of Oct 13, 2024

#21 KANE, Julia

Date	Opponent	SP	Attack				Set			Serve				Recept			Blocking					Team			
			K	E	TA	PCT	A	TA	PCT	SA	SE	TA	PCT	RE	TA	PCT	DIG	BS	BA	BE	TOTAL	BHE	POINTS	HIT%	SCORE
08/31/2024	UMBC	2	0	0	0	.000	1	1	1.000	1	0	7	1.000	1	6	.833	1	0	0	0	0.0	0	1.0	.371	3-0
09/07/2024	at Utah St.	2	0	0	0	.000	0	0	.000	1	1	8	.875	0	0	.000	0	0	0	0	0.0	0	1.0	.290	3-0
09/13/2024	vs Houston	3	0	0	0	.000	0	0	.000	0	1	12	.917	0	0	.000	1	0	0	0	0.0	0	0.0	.292	3-0
09/14/2024	vs Kentucky	4	0	0	0	.000	1	1	1.000	1	2	17	.882	0	0	.000	3	0	0	0	0.0	0	1.0	.310	3-1
09/19/2024	at Kansas	4	0	0	0	.000	2	2	1.000	1	3	15	.800	0	0	.000	0	0	0	0	0.0	0	1.0	.278	1-3
09/20/2024	vs Creighton	4	0	0	0	.000	0	2	.000	0	1	14	.929	0	0	.000	3	0	0	0	0.0	0	0.0	.209	1-3
09/21/2024	vs Tulsa	3	0	0	0	.000	1	1	1.000	1	2	16	.875	0	0	.000	6	0	0	0	0.0	0	1.0	.365	3-0
09/25/2024	Penn St.	2	0	0	0	.000	0	1	.000	0	1	4	.750	0	0	.000	0	0	0	0	0.0	0	0.0	.176	0-3
09/28/2024	at Minnesota	5	0	0	0	.000	0	1	.000	3	2	15	.867	0	0	.000	2	0	0	0	0.0	0	3.0	.252	3-2
10/04/2024	at Northwestern	4	0	0	0	.000	2	2	1.000	1	4	20	.800	0	0	.000	0	0	0	0	0.0	0	1.0	.287	3-1
10/06/2024	Michigan St.	3	0	0	0	.000	0	2	.000	0	1	12	.917	0	0	.000	4	0	0	0	0.0	0	0.0	.252	3-0
10/11/2024	at Nebraska	5	0	0	0	.000	1	2	.500	0	2	9	.778	0	0	.000	0	0	0	0	0.0	0	0.0	.311	2-3
10/12/2024	at Iowa	1	0	0	0	.000	0	0	.000	0	0	2	1.000	0	0	.000	0	0	0	0	0.0	0	0.0	.213	3-1
Totals		42	0	0	0	.000	8	15	.533	9	20	151	.868	1	6	.833	20	0	0	0	0.0	0	9.0		

Player Averages

Sets Played	Kills per set	Assists per set	Service aces per set	Digs per set	Blocks per set	Points per set
42	0.00	0.19	0.21	0.48	0.00	0.21



Purdue Women's Volleyball
Individual Career Summaries
All games

Page 1/7
as of Oct 13, 2024

ANDERSON, Taylor

SEASON	TEAM	SM-MP	K	K/S	E	TA	PCT	A	A/S	SA	SA/S	SE	DIG	D/S	RE	BS	BA	TB	B/S	BE	BHE	PTS	PTS/S
2023-24	Purdue	112-31	35	0.31	13	101	.218	1107	9.88	17	0.15	30	221	1.97	2	7	88	95	0.85	6	7	103.0	0.92
2024-25	Purdue	62-17	34	0.55	10	92	.261	677	10.92	14	0.23	24	137	2.21	1	4	56	60	0.97	2	3	80.0	1.29
TOTAL		174 - 48	69	0.40	23	193	.238	1784	10.25	31	0.18	54	358	2.06	3	11	144	155	0.89	8	10	183.0	1.05

Single Game Highs

Statistic	Value	
Kills	6	at Iowa 10/12/24
Attacks	10	vs Tulsa 09/21/24
Assists	60	vs Marquette 12/01/23
Serve Aces	3	vs Illinois 10/04/23, vs California 09/05/24
Digs	16	vs Marquette 12/01/23
Blocks	8	vs Kansas St. 08/30/24
Block solos	1	11 times
Block assists	8	vs Kansas St. 08/30/24

CARR, Lizzie

SEASON	TEAM	SM-MP	K	K/S	E	TA	PCT	A	A/S	SA	SA/S	SE	DIG	D/S	RE	BS	BA	TB	B/S	BE	BHE	PTS	PTS/S
2023-24	Purdue	30-18	14	0.47	6	34	.235	0	0.00	0	0.00	0	2	0.07	1	0	8	8	0.27	1	0	18.0	0.60
2024-25	Purdue	12-6	21	1.75	4	44	.386	0	0.00	0	0.00	0	1	0.08	0	1	8	9	0.75	1	0	26.0	2.17
TOTAL		42 - 24	35	0.83	10	78	.321	0	0.00	0	0.00	0	3	0.07	1	1	16	17	0.40	2	0	44.0	1.05

Single Game Highs

Statistic	Value	
Kills	6	vs UMBC 08/31/24
Attacks	15	vs UMBC 08/31/24
Digs	1	vs Loyola Chicago 08/27/23, at Kansas 08/31/23, vs Tulsa 09/21/24
Blocks	4	vs UMBC 08/31/24
Block solos	1	at Utah St. 09/07/24
Block assists	4	vs UMBC 08/31/24
PCT	1.000	vs Houston 09/13/24



Purdue Women's Volleyball
Individual Career Summaries
All games

Page 2/7
as of Oct 13, 2024

CHICOINE, Chloe

SEASON	TEAM	SM-MP	K	K/S	E	TA	PCT	A	A/S	SA	SA/S	SE	DIG	D/S	RE	BS	BA	TB	B/S	BE	BHE	PTS	PTS/S
2023-24	Purdue	125-32	478	3.82	142	1315	.256	27	0.22	39	0.31	53	283	2.26	30	5	24	29	0.23	7	1	534.0	4.27
2024-25	Purdue	62-17	203	3.27	78	614	.204	21	0.34	13	0.21	21	158	2.55	7	2	17	19	0.31	2	0	226.5	3.65
TOTAL		187 - 49	681	3.64	220	1929	.239	48	0.26	52	0.28	74	441	2.36	37	7	41	48	0.26	9	1	760.5	4.07

Single Game Highs

Statistic	Value	
Kills	27	vs Penn St. 11/05/23
Attacks	61	vs Penn St. 11/05/23
Assists	5	at Nebraska 10/11/24
Serve Aces	4	vs Illinois 10/04/23, vs Michigan St. 11/12/23
Digs	23	vs Wisconsin 11/17/23
Blocks	4	at Utah St. 09/07/24
Block solos	2	at Utah St. 09/07/24
Block assists	3	vs Indiana 10/18/23, at Wisconsin 11/01/23, vs Michigan St. 11/12/23, vs Houston 09/13/24

COLVIN, Raven

SEASON	TEAM	SM-MP	K	K/S	E	TA	PCT	A	A/S	SA	SA/S	SE	DIG	D/S	RE	BS	BA	TB	B/S	BE	BHE	PTS	PTS/S
2021-22	Purdue	96-30	169	1.76	54	330	.348	4	0.04	2	0.02	4	12	0.13	0	13	105	118	1.23	20	1	236.5	2.46
2022-23	Purdue	122-32	269	2.20	98	599	.285	6	0.05	43	0.35	59	74	0.61	1	22	151	173	1.42	19	1	409.5	3.36
2023-24	Purdue	125-32	269	2.15	105	586	.280	11	0.09	26	0.21	40	61	0.49	3	19	148	167	1.34	16	0	388.0	3.10
2024-25	Purdue	62-17	159	2.56	43	289	.401	3	0.05	26	0.42	34	34	0.55	1	17	89	106	1.71	11	0	246.5	3.98
TOTAL		405 - 111	866	2.14	300	1804	.314	24	0.06	97	0.24	137	181	0.45	5	71	493	564	1.39	66	2	1281	3.16

Single Game Highs

Statistic	Value	
Kills	19	at Minnesota 09/28/24
Attacks	32	vs Utah 09/02/22, vs Marquette 12/01/23
Assists	2	vs Illinois 10/04/23, vs Marquette 12/01/23
Serve Aces	7	at Minnesota 09/28/24
Digs	8	vs Marquette 09/01/23
Blocks	16	at Maryland 11/23/22
Block solos	5	at Maryland 11/23/22
Block assists	11	at Maryland 11/23/22



Purdue Women's Volleyball
Individual Career Summaries
All games

Page 3/7
as of Oct 13, 2024

GRAY, Raven

SEASON	TEAM	SM-MP	K	K/S	E	TA	PCT	A	A/S	SA	SA/S	SE	DIG	D/S	RE	BS	BA	TB	B/S	BE	BHE	PTS	PTS/S
2024-25	Purdue	1-1	1	1.00	0	1	1.000	0	0.00	0	0.00	0	0	0.00	0	0	0	0	0.00	0	0	1.0	1.00
TOTAL		1 - 1	1	1.00	0	1	1.000	0	0.00	0	0.00	0	0	0.00	0	0	0	0	0.00	0	0	1.0	1.00

Single Game Highs

Statistic	Value	
Kills	1	vs UMBC 08/31/24
Attacks	1	vs UMBC 08/31/24
PCT	1.000	vs UMBC 08/31/24

HEANEY, Grace

SEASON	TEAM	SM-MP	K	K/S	E	TA	PCT	A	A/S	SA	SA/S	SE	DIG	D/S	RE	BS	BA	TB	B/S	BE	BHE	PTS	PTS/S
2023-24	Purdue	69-22	92	1.33	44	249	.193	3	0.04	0	0.00	0	23	0.33	0	4	46	50	0.72	5	0	119.0	1.72
TOTAL		69 - 22	92	1.33	44	249	.193	3	0.04	0	0.00	0	23	0.33	0	4	46	50	0.72	5	0	119.0	1.72

Single Game Highs

Statistic	Value	
Kills	13	at Ohio St. 10/15/23
Attacks	24	at Ohio St. 10/15/23
Assists	1	at Ohio St. 10/15/23, at Wisconsin 11/01/23, vs Northwestern 10/01/23
Digs	3	at Ohio St. 10/15/23, at Penn St. 10/22/23
Blocks	6	vs Indiana 10/18/23
Block solos	1	vs SMU 09/08/23, at Penn St. 10/22/23, vs Kentucky 09/09/23, vs Oregon 12/07/23
Block assists	6	vs Indiana 10/18/23



Purdue Women's Volleyball
Individual Career Summaries
All games

Page 4/7
as of Oct 13, 2024

HORNUNG, Ali

SEASON	TEAM	SM-MP	K	K/S	E	TA	PCT	A	A/S	SA	SA/S	SE	DIG	D/S	RE	BS	BA	TB	B/S	BE	BHE	PTS	PTS/S
2021-22	Purdue	63-22	0	0.00	1	1	-1.000	3	0.05	7	0.11	11	32	0.51	3	0	2	2	0.03	0	0	8.0	0.13
2022-23	Purdue	122-32	2	0.02	4	17	-.118	29	0.24	28	0.23	26	303	2.48	15	0	0	0	0.00	1	0	30.0	0.25
2023-24	Purdue	114-31	0	0.00	0	3	.000	15	0.13	15	0.13	18	277	2.43	25	1	0	1	0.01	0	0	16.0	0.14
2024-25	Purdue	62-17	0	0.00	0	3	.000	51	0.82	3	0.05	4	247	3.98	15	0	1	1	0.02	0	0	3.5	0.06
TOTAL		361 - 102	2	0.01	5	24	-.125	98	0.27	53	0.15	59	859	2.38	58	1	3	4	0.01	1	0	57.5	0.16

Single Game Highs

Statistic	Value	
Kills	1	at Penn St. 11/25/22, vs Penn St. 11/12/22
Attacks	3	at Minnesota 10/22/22
Assists	7	vs Kentucky 09/14/24
Serve Aces	4	vs Bradley 09/02/22
Digs	24	at Minnesota 09/28/24
Blocks	2	vs Rutgers 10/02/21
Block solos	1	at Kansas 08/31/23
Block assists	2	vs Rutgers 10/02/21

HUDSON, Eva

SEASON	TEAM	SM-MP	K	K/S	E	TA	PCT	A	A/S	SA	SA/S	SE	DIG	D/S	RE	BS	BA	TB	B/S	BE	BHE	PTS	PTS/S
2022-23	Purdue	122-32	515	4.22	176	1420	.239	10	0.08	34	0.28	15	249	2.04	21	7	54	61	0.50	5	0	583.0	4.78
2023-24	Purdue	125-32	560	4.48	167	1509	.260	8	0.06	14	0.11	17	255	2.04	29	8	47	55	0.44	3	0	605.5	4.84
2024-25	Purdue	62-17	261	4.21	71	708	.268	7	0.11	10	0.16	14	148	2.39	14	2	30	32	0.52	3	0	288.0	4.65
TOTAL		309 - 81	1336	4.32	414	3637	.254	25	0.08	58	0.19	46	652	2.11	64	17	131	148	0.48	11	0	1477	4.78

Single Game Highs

Statistic	Value	
Kills	30	vs Wisconsin 11/17/23
Attacks	73	vs Marquette 12/01/23
Assists	2	5 times
Serve Aces	4	at Michigan St. 11/04/22
Digs	17	at Illinois 09/30/22
Blocks	5	at Northwestern 10/28/22, vs Utah 09/02/22, at Iowa 09/25/22, vs Kansas St. 08/30/24
Block solos	2	vs Wisconsin 11/17/23
Block assists	5	at Northwestern 10/28/22, vs Utah 09/02/22



Purdue Women's Volleyball
Individual Career Summaries
All games

Page 5/7
as of Oct 13, 2024

KANE, Julia

SEASON	TEAM	SM-MP	K	K/S	E	TA	PCT	A	A/S	SA	SA/S	SE	DIG	D/S	RE	BS	BA	TB	B/S	BE	BHE	PTS	PTS/S
2023-24	Purdue	1-1	0	0.00	0	0	.000	0	0.00	0	0.00	0	0	0.00	0	0	0	0	0.00	0	0	0.0	0.00
2024-25	Purdue	42-13	0	0.00	0	0	.000	8	0.19	9	0.21	20	20	0.48	1	0	0	0	0.00	0	0	9.0	0.21
TOTAL		43 - 14	0	0.00	0	0	.000	8	0.19	9	0.21	20	20	0.47	1	0	0	0	0.00	0	0	9.0	0.21

Single Game Highs

Statistic	Value	
Assists	2	at Northwestern 10/04/24, at Kansas 09/19/24
Serve Aces	3	at Minnesota 09/28/24
Digs	6	vs Tulsa 09/21/24

MCALÉER, Ryan

SEASON	TEAM	SM-MP	K	K/S	E	TA	PCT	A	A/S	SA	SA/S	SE	DIG	D/S	RE	BS	BA	TB	B/S	BE	BHE	PTS	PTS/S
2024-25	Purdue	61-17	2	0.03	1	4	.250	18	0.30	10	0.16	25	135	2.21	12	0	0	0	0.00	0	0	12.0	0.20
TOTAL		61 - 17	2	0.03	1	4	.250	18	0.30	10	0.16	25	135	2.21	12	0	0	0	0.00	0	0	12.0	0.20

Single Game Highs

Statistic	Value	
Kills	1	vs Kentucky 09/14/24, vs Tulsa 09/21/24
Attacks	1	at Northwestern 10/04/24, vs Kentucky 09/14/24, at Kansas 09/19/24, vs Tulsa 09/21/24
Assists	3	vs Houston 09/13/24, vs Tulsa 09/21/24
Serve Aces	6	at Minnesota 09/28/24
Digs	13	at Nebraska 10/11/24
PCT	1.000	vs Kentucky 09/14/24, vs Tulsa 09/21/24

MYERS, Lourdes

SEASON	TEAM	SM-MP	K	K/S	E	TA	PCT	A	A/S	SA	SA/S	SE	DIG	D/S	RE	BS	BA	TB	B/S	BE	BHE	PTS	PTS/S
2022-23	Purdue	29-16	25	0.86	8	54	.315	0	0.00	0	0.00	0	3	0.10	0	0	16	16	0.55	3	0	33.0	1.14
2023-24	Purdue	112-32	164	1.46	53	333	.333	4	0.04	0	0.00	0	28	0.25	1	11	99	110	0.98	33	1	224.5	2.00
2024-25	Purdue	58-17	63	1.09	15	133	.361	0	0.00	0	0.00	0	16	0.28	1	4	52	56	0.97	19	0	93.0	1.60
TOTAL		199 - 65	252	1.27	76	520	.338	4	0.02	0	0.00	0	47	0.24	2	15	167	182	0.91	55	1	350.5	1.76

Single Game Highs

Statistic	Value	
Kills	11	vs Indiana 10/18/23
Attacks	24	vs Indiana 10/18/23
Assists	1	at Penn St. 10/22/23, vs Penn St. 11/05/23, vs Oregon 12/07/23, at Kansas 08/31/23
Digs	3	vs Southern California 09/15/23
Blocks	9	vs Michigan St. 11/12/23
Block solos	2	vs Northwestern 10/01/23, at Wisconsin 11/01/23
Block assists	9	vs Michigan St. 11/12/23



Purdue Women's Volleyball
Individual Career Summaries
All games

Page 6/7
as of Oct 13, 2024

RASTOVSKI, Emily

SEASON	TEAM	SM-MP	K	K/S	E	TA	PCT	A	A/S	SA	SA/S	SE	DIG	D/S	RE	BS	BA	TB	B/S	BE	BHE	PTS	PTS/S
2022-23	Purdue	10-8	8	0.80	4	20	.200	0	0.00	0	0.00	0	0	0.00	0	0	2	2	0.20	0	0	9.0	0.90
2023-24	Purdue	15-7	10	0.67	5	25	.200	1	0.07	0	0.00	0	4	0.27	0	0	7	7	0.47	0	0	13.5	0.90
TOTAL		25 - 15	18	0.72	9	45	.200	1	0.04	0	0.00	0	4	0.16	0	0	9	9	0.36	0	0	22.5	0.90

Single Game Highs

Statistic	Value	
Kills	4	vs Xavier 09/10/22
Attacks	10	vs Penn St. 11/05/23
Assists	1	vs Penn St. 11/05/23
Digs	4	vs Penn St. 11/05/23
Blocks	3	vs Penn St. 11/05/23
Block assists	3	vs Penn St. 11/05/23

SHONDELL, Allie

SEASON	TEAM	SM-MP	K	K/S	E	TA	PCT	A	A/S	SA	SA/S	SE	DIG	D/S	RE	BS	BA	TB	B/S	BE	BHE	PTS	PTS/S
2024-25	Purdue	3-3	0	0.00	1	1	-1.000	11	3.67	0	0.00	1	1	0.33	0	0	3	3	1.00	0	0	1.5	0.50
TOTAL		3 - 3	0	0.00	1	1	-1.000	11	3.67	0	0.00	1	1	0.33	0	0	3	3	1.00	0	0	1.5	0.50

Single Game Highs

Statistic	Value	
Attacks	1	at Utah St. 09/07/24
Assists	5	vs Tulsa 09/21/24
Digs	1	at Utah St. 09/07/24
Blocks	2	vs Tulsa 09/21/24
Block assists	2	vs Tulsa 09/21/24
PCT	-1.000	at Utah St. 09/07/24

WILLIAMS, Rachel

SEASON	TEAM	SM-MP	K	K/S	E	TA	PCT	A	A/S	SA	SA/S	SE	DIG	D/S	RE	BS	BA	TB	B/S	BE	BHE	PTS	PTS/S
2024-25	Purdue	36-15	1	0.03	0	3	.333	1	0.03	5	0.14	11	9	0.25	0	0	0	0	0.00	0	0	6.0	0.17
TOTAL		36 - 15	1	0.03	0	3	.333	1	0.03	5	0.14	11	9	0.25	0	0	0	0	0.00	0	0	6.0	0.17

Single Game Highs

Statistic	Value	
Kills	1	vs California 09/05/24
Attacks	1	vs California 09/05/24, vs Creighton 09/20/24, vs Penn St. 09/25/24
Assists	1	vs Creighton 09/20/24
Serve Aces	1	5 times
Digs	4	vs UMBC 08/31/24
PCT	1.000	vs California 09/05/24



Purdue Women's Volleyball
Individual Career Summaries
All games

Page 7/7
as of Oct 13, 2024

WOLLARD, Kenna

SEASON	TEAM	SM-MP	K	K/S	E	TA	PCT	A	A/S	SA	SA/S	SE	DIG	D/S	RE	BS	BA	TB	B/S	BE	BHE	PTS	PTS/S
2023-24	Purdue	60-21	57	0.95	36	184	.114	0	0.00	0	0.00	0	22	0.37	0	3	35	38	0.63	9	0	77.5	1.29
2024-25	Purdue	57-16	116	2.04	41	275	.273	0	0.00	0	0.00	0	26	0.46	0	1	34	35	0.61	7	0	134.0	2.35
TOTAL		117 - 37	173	1.48	77	459	.209	0	0.00	0	0.00	0	48	0.41	0	4	69	73	0.62	16	0	211.5	1.81

Single Game Highs

Statistic	Value	
Kills	18	at Northwestern 10/04/24
Attacks	32	at Northwestern 10/04/24
Digs	5	vs Illinois 10/04/23
Blocks	5	vs Houston 09/13/24
Block solos	1	at Rutgers 09/24/23, vs Creighton 09/20/24, at Michigan St. 11/25/23, at Michigan 11/24/23
Block assists	5	vs Houston 09/13/24

YIM, Sydney

SEASON	TEAM	SM-MP	K	K/S	E	TA	PCT	A	A/S	SA	SA/S	SE	DIG	D/S	RE	BS	BA	TB	B/S	BE	BHE	PTS	PTS/S
2022-23	Purdue	4-4	0	0.00	0	0	.000	2	0.50	0	0.00	0	2	0.50	0	0	1	1	0.25	0	0	0.5	0.13
2023-24	Purdue	1-1	0	0.00	0	0	.000	1	1.00	0	0.00	0	0	0.00	0	0	0	0	0.00	0	0	0.0	0.00
TOTAL		5 - 5	0	0.00	0	0	.000	3	0.60	0	0.00	0	2	0.40	0	0	1	1	0.20	0	0	0.5	0.10

Single Game Highs

Statistic	Value	
Assists	1	vs Bradley 09/02/22, vs Rutgers 10/02/22, vs Fairfield 11/30/23
Digs	2	vs Bradley 09/02/22
Blocks	1	vs Rutgers 10/02/22
Block assists	1	vs Rutgers 10/02/22