

## WOMEN'S BASKETBALL

 2022-23 PURDUE BOILERMAKERS

 **TALE OF THE TAPE** **THE MATCHUP**
**A WIN WOULD**

- Be the first road ranked win since the 2017-18 season at No. 10 Maryland.
- Mark Purdue's fourth Big Ten road win this season, its most since 2020.
- Even the all-time series between Katie Gearlds and Shauna Green at 1-1.

**KG QUICK HITS****HEAD COACH KATIE GEARLDS**

- Born - Oct. 26, 1984 (38 years old)
- Second season as head coach at her alma mater
- Hired as associate head coach on March 26, 2021
- Elevated to head coach on Sept. 16, 2021
- 10th season as a head coach, second at Purdue
- Six-year professional basketball career
- College - Purdue '07
- High School - Beech Grove '03

**AT PURDUE (2021-PRESENT)**

- Went 17-15 in opening campaign, posting a 10-win improvement, the best jump by a first-year head coach at Purdue
- Head coach just 47 days before the 2021-22 season began
- Announced as the associate head coach on March 26, 2021, as part of a succession plan that, originally, would see her take over the head seat for the 2022-23 campaign

**AT MARIAN (2013-2021)**

- Went 228-50 (82%) over eight seasons at Marian in the NAIA
- Won back-to-back NAIA National Championships in 2016 and 2017
- Named NAIA National Coach of the Year three times (2016, 2017, 2020)

**PROFESSIONAL CAREER (2007-2013)**

- Played six professional seasons across the WNBA, Spain, Greece, Portugal and Slovakia
- Went 7th overall to the Seattle Storm in the 2007 WNBA Draft, the highest pick in program history.

**AT PURDUE (2004-07)**

- 2007 All-America, 4-time All-Big Ten selection, 2007 Big Ten champ
- Tallied 1,974 points, 238 3-pointers and 103 wins at Purdue
- Four NCAA Tournament appearances and a 2007 Elite Eight

**AT BEECH GROVE HIGH SCHOOL**

- 2003 3A Indiana State Champion, Indiana Miss Basketball
- 2,521 career points, sixth in state history, averaging 30.1 points
- 2003 McDonald's All-America Game MVP, alongside LeBron James

**LAST TIME OUT**

- Purdue put together a dominant performance on both ends of the court to defeat Minnesota 75-56.
- Cassidy Hardin hit four of Purdue's 10 triples on the afternoon.
- Four players finished in double figures, led by Hardin's 14 points.
- The Boilermakers turned 13 turnovers by the Golden Gophers into 20 points, while limiting their giveaways to just eight.
- Topped by Jeanae Terry with eight, Purdue dished out 21 assists on 30 made field goals.

**STARTING LINEUPS**

Lineup (Record)	Games
1. Layden, Terry, Petree, Harper, Hardin (8-2)	1-10
2. Terry, Petree, Harper, Hardin, Ellis (3-1)	11-13, 19
3. Terry, Petree, Harper, Hardin, Smith (1-1)	14-15
4. Terry, Harper, Layden, Ellis, Smith (0-1)	16
5. Terry, Harper, Layden, Ellis, Learn (1-1)	17-18

Player	19	20	21	22	Total	Record^
Abbey Ellis	-	29*	23*	31	7	90*
Cassidy Hardin	3	8	-	31	16	58
Caitlyn Harper	3*	5*	10*	32*	19	67*
Ainhua Holzer	-	-	-	-	-	-
Madison Layden	-	-	21	28	13	62
Ava Learn	-	-	-	2	2	1-1
Lasha Petree	12	29	27	26	16	110
Addison Potts	-	-	-	-	-	-
Jayla Smith	-	-	-	1	3	4
Lilly Stoddard	-	-	-	-	-	-
Jeanae Terry	-	11*	23*	32	19	85*
Rickie Woltman	-	-	-	22	-	22

\* includes starts at previous school | ^ Record at Purdue

**BOILER NOTES****BOILERMAKER BASKETBALL**

- Purdue Women's Basketball is in its 48th season in 2022-23 with an all-time record of 917-532. Last season, Purdue became the 40th program in NCAA Division I history to reach 900 wins and ranks fifth in all-time victories among current Big Ten teams.
- The Boilermakers are the only team from the Big Ten to win a national championship, hoisting the title in 1999.
- The program has reached the NCAA Tournament 26 times with 12 Sweet 16s, eight Elite 8s, three final fours and a trio of national championship game appearances.
- In addition to its NCAA success, Purdue owns the Big Ten record for most tournament titles with nine.

**KG ERA YEAR 2**

- With a full offseason to prepare for the 2022-23 campaign, head coach Katie Gearlds is in her second year at her alma mater.
- The Boilermakers already posted a 9-1 record in non-conference play, the best mark since 2003-04 and tied for the third best in program history.
- Taking over the reins of the program a mere 47 days ahead of the season last year, Gearlds converted Purdue into a fast-paced, let-fly offense that smashed the program record for 3-pointers made and attempted.
- After the program won just seven games in 2020-21, Gearlds guided the Boilermakers to 17 wins in her initial campaign, marking the biggest win improvement by a first-year head coach at Purdue.
- In the second game against a ranked opponent under Gearlds, Purdue snapped a 19-game skid against AP Top 25 teams with a 66-61 win over No. 17 Florida State at the St. Pete Showcase.
- Gearlds took the Boilermakers back to the postseason for the first time since 2017-18, reaching the second round of the WNIT.
- Purdue's 10-2 mark in the non-conference in 2021-22 was the second best by a first-year head coach in program history.

**A TOUGH STRETCH**

- Purdue is in a stretch of three straight games against ranked opponents in No. 22 Illinois, No. 2 Ohio State and No. 6 Indiana.
- The last time Purdue faced three straight ranked teams in the regular season came against No. 4 Notre Dame, No. 20 LSU and No. 14 Stanford.
- It is the first time Purdue has played three consecutive league games against ranked clubs.

**ELITE COMPANY**

- Jeanae Terry is in elite company as one of a select group of players with over six points, rebounds and assists per game.

	School	PPG	RPG	APG
Jeanae Terry	Purdue	6.7	7.8	7.0
Olivia Miles	Notre Dame	15.6	7.3	7.2
Caitlin Clark	Iowa	26.8	7.7	7.9

**TRANSFER TROUBLEMAKERS**

- Lasha Petree and Caitlyn Harper have quickly become impact players for the Boilermakers.
- The duo set the tone in the exhibition with 36 combined points.
- Both were prolific scorers at their previous institutions and have provided a boost to the Purdue offense.

Games with Harper or Petree as a Leading Scorer:	12
Games either Harper or Petree in double figures:	18
Games both Harper or Petree in double figures:	8
Harper/Petree Combined Season Average:	26 PPG
Highest Combined Game:	40 2x last vs. Syracuse (H-9, P-31)

**MILESTONE WATCH**

- Lasha Petree needs 61 points to join the 2,000-point club.
- Abbey Ellis is 118 points away from 1,500 for her career.
- Cassidy Hardin is 8 3-pointers away from 200 for her career.
- Caitlyn Harper is 3 points shy of the 1,500-point mark.
- Jeanae Terry joined the 500-assist club for her career with a pair of dimes against Nebraska.

**SPLASH ZONE**

- Following a record-breaking 3-point barrage last season, head coach Katie Gearlds has an even deeper roster to shoot the 3-ball.
- Purdue obliterated the single-game and season marks for 3-pointers made (239) and attempted (738) during 2021-22.
- Hardly surprising, when you consider that Gearlds won the 2007 College Slam 3-Point Contest on the men's and women's side.
- Gearlds would also not hesitate to tell you that she could still out shoot all of them today.

Name	Season 3-Pointers	Career 3-Pointers
Abbey Ellis	21	142*
Cassidy Hardin	38	192
Caitlyn Harper	13	81*
Madison Layden	26	134
Lasha Petree	29	243*
Addison Potts	-	-
Jayla Smith	13	29
Jeanae Terry	1	34*
Totals	141	855

\*Includes Previous School

**NATIONAL NAE**

- Jeanae Terry's two non-point double-doubles to start the season put the senior in the Big Ten and national leaderboards.
- Terry was the first player in the country to reach 100 assists and rebounds this year.
- Terry has tallied five or more assists in 14 games and 10 or more rebounds five times.
- The Detroit native is 17th in Purdue history with 316 assists.
- With a pair of dimes against Nebraska, Terry crossed the 500-assist plateau for her career.
- Terry has dished out eight or more assists in seven games this season, the most by a Boilermaker in the last 15 seasons.
- Terry finished her junior year ranked sixth in the Big Ten in assist-to-turnover ratio, third in assists (per game), 11th in rebounds per game and second in triple-doubles.

Jeanae Terry	National	Big Ten	Stat
Assist-to-Turnover	34	5	2.33
Assists	6	2	133
Assists Per Game	8	2	7.0
Rebounds	116	6	148
Rebounds Per Game	126	6	7.8
Steals	115	8	38
Steals Per Game	129	6	2.0

**OUR AUSSIE, ABBEY**

- After coming off the bench for the majority of non-conference action, Abbey Ellis has picked up her output in Big Ten play.
- Ellis sits third on the team with 11.2 points per game, with 11.2 as a starter and 11.3 points per game coming off the bench.
- The Australian international is 23rd in the nation and second in the Big Ten with a 89.3% free throw mark on the year.
- She has finished in double figures in nine games with three outings of 20 points or more.
- Ellis dropped a season-high 29 points against SIUE, before going for 24 and 20 against Northwestern and Nebraska in back-to-back games.
- Ellis was one of three players in the nation to average 15 points per game and shoot 70 FG%, 60 3PT% and 90 FT% (17 ppg, 71.4% fg, 66.7% 3pt, 100% ft) in the first two weeks of the season.

**JAYLA BEING JAYLA**

- After a taking some time to find her rhythm in the non-conference, Jayla Smith has caught fire in Big Ten action.
- Smith is averaging 9.2 points per game at a 46.6% shooting clip against league opponents.
- She put together her longest stretch of games in double figures with five.

**BOILER NOTES****IT THE STAT STUFFER**

- Jeanae Terry continues stuff the stat sheet every night as one of the nation's top passers and best rebounding guards.
- Terry has recorded five rebounds and five assists in 13 games, second only to Caitlin Clark's 16 this season.
- Terry is one of five players in the nation to record five points, five assists and five rebounds in 10 or more games this year.
- Terry is on pace to become just the fourth Boilermaker in program history to dish out 150 or more assists in multiple seasons, accomplished by Stephanie White, MaChelle Joseph and Jennifer Jacoby.

**HOT HANDS**

- Purdue has shot 50% or better in seven games this season.
- Purdue is 22nd in the country with a clip of 46.3%.
- The Boilermakers are 11-4 when shooting 40% or better this season.
- The Boilermakers' season-best 60.7% mark was against Harvard.
- Starting the season with a clip of 45% or better in the first five outings, Purdue was ranked No. 1 in the nation.

**LASHA "JUST A BUCKET" PETREE**

- Fifth-year senior Lasha Petree wasted no time cementing herself as one of Purdue's go-to options on offense.
- Petree was named the No. 9 transfer this season by ESPNW.
- Petree leads the team with 14.9 points per game, while shooting 43.4% with 29 triples.
- She has scored in double figures in 15 games this season.
- She has gone for 20 or more points in five outings, including a season high of 31 against Syracuse.
- The Detroit native is 14th in Division I among active career scorers.
- Petree was tabbed as one of the top transfers this year by HerHoopStats.com
- At Rutgers, the Detroit native totaled 8.3 points per night and hit 38 3-pointers at a 37.6% clip.
- Her final season at Bradley saw her average 18 points per game with 53 triples to earn All-MVC honors for the second straight year and appear on the Naismith Award Watch List.
- Petree joined Purdue out of the transfer portal following three years at Bradley and last year at Rutgers.

**MULTI-HEADED MONSTER**

- The Boilermakers pose a problem to every team they face this year – who are you going to stop?
- Head coach Katie Gearlds has a multitude of scoring options at her disposal, as three different players have led the team in scoring this season.
- Seven players have connected from the outside as well.

Points Leaders	Games	Record	Season High
Abbey Ellis	4	2-2	29 vs. SIUE
Caitlyn Harper	3	2-1	20 at Penn State
Madison Layden	2	0-2	16 vs. Michigan
Lasha Petree	9	7-2	31 vs. Syracuse
Cassidy Hardin	2	2-0	18 vs. Indiana State

**MAKING IMPROVEMENTS**

- Even with 47 days of preparation, the Boilermakers took strides to improve production and limit opponent success during the 2021-22 season.

Stat	20-21	21-22	22-23
Points Per Game	66.2	69.2	73.4
Opp. Points Per Game	73.5	67.3	65.4
Field Goal Pct.	41.4	42.2	46.3
Opp Field Goal Pct.	44.7	41.5	38.2
3-Pts Per Game	6.2	7.5	7.4
Opp. 3-Pts Per Game	5.5	4.8	6.8
Rebounds Per Game	35.3	35.8	36.3
Assists Per Game	13.9	15.8	17.1
Turnovers Per Game	17.3	15.1	15.9
Steals Per Game	7.3	7.0	7.8
Blocks Per Game	2.6	3.9	3.3

**NUMBERS TO KNOW IN THE GEARLDS ERA**

- Purdue is 24-5 when leading after the first quarter and 28-4 when taking a lead into the fourth quarter.
- The Boilermakers are 20-13 when knocking down seven or more 3-pointers.
- Purdue is 12-9 when shooting 35% from distance or better and 24-7 when shooting 40% or better overall, including 12-1 with a field goal clip above 50%.
- The Boilermakers are 19-3 when outrebounding opponents.
- Purdue is 16-8 when forcing 15 or more turnovers.
- The Boilermakers hold a 22-3 record when scoring 70 or more points, while also posting a 25-5 mark when holding opponents below that mark.

**HARPING ON HARPER**

- Purdue's second transfer commitment out of the portal landed the 2022 WAC Player of the Year from Cal Baptist.
- She sits second on the team with 11.1 points per game.
- Harper is 1-of-6 players in the Big Ten averaging over 10 points per game while shooting 55% or better from the field.
- The redshirt senior has made her mark on the outside with 13 triples at a 41.9% clip.
- Harper paced Purdue with a season-high 20 points on the road at Penn State to top her 11 games in double figures.
- The redshirt senior was named the 11th best transfer from a mid-major to a high-major this offseason by HerHoopStats.com.
- The Hartland, Wisc., native came to Purdue after leading the WAC in scoring in 2021-22 with 17.7 points per game with a 52.4% shooting clip.
- Harper's honor haul also includes 2022 CoSIDA Academic All-America, 2021-22 WAC Player of the Year, 2021 WAC Tournament MVP.
- Hailing from a basketball family, Harper's father Dale played at Bemidji State and her sister Alaina currently plays for Grand Canyon.

**DROPPING DIMES**

- Head coach Katie Gearlds wants her team to run and shoot before turning the ball over.
- Led by Jeanae Terry's 133 assists, Purdue is averaging 17.1 helpers per game to rank 22nd nationally and fifth in the Big Ten.
- Madison Layden sits second on the team with 58 helpers.
- Terry is fifth in the Big Ten with a 2.33 assist-to-turnover ratio.
- The 2022-23 Boilermakers are on pace to crack the program's single-season top 10 in assists and assists per game.
- The Boilermakers have made it an emphasis to make the extra pass recording five games with 20 or more assists and two games with an assist-to-turnover ratio better than 2-1.

**ELLIS' ENERGY**

- In her second season in West Lafayette, Abbey Ellis has brought Mackey Arena to its feet countless times with her circus shots and impact 3-pointers.
- She quickly became a fan favorite in West Lafayette last year, earning All-Big Ten honorable mention in her first campaign.
- Purdue's first Australian rocks a ribbon in her hair during games from a selection that her mother sends her to wear.
- The senior has also gained a sizeable following on TikTok @abbeye\_22 with videos shared by Barstool Sports, Slam and more.

**INSIDE-OUT**

- While the Boilermakers continue to light it up from the outside, Purdue's offense has worked the ball inside this year, averaging 33.6 points per game in the lane with five games over 40.
- After holding opponents to just 4.8 3-pointers per game last year, that number has ventured up to 6.8 per night, as opponents have had to find space outside the lane to score.
- Purdue's interior defense has improved to keep teams to 25.2 points per game in the paint, outscoring teams 638-478 in the lane on the year.

**INDIANA MISS BASKETBALL**

- Jayla Smith is the 10th Indiana Miss Basketball to play at Purdue, winning the award in 2021 after a senior campaign of 19.5 points and 4.6 steals per game at Lawrence North.
- The long history of Purdue welcoming the state's top player extended back to 2003, when Katie Gearlds became the fifth honoree to pick West Lafayette.
- Madison Layden nearly added to the tally in 2020, coming in second.
- Purdue holds the record for most Indiana Miss Basketball winners, followed by Indiana, Notre Dame, Tennessee tied for second with four.

**BOILERMAKER MISS BASKETBALL WINNERS**

Year	Name	High School	Year	Name	High School
1984	Sharon Versyp	Mishawaka	1991	Jennifer Jacoby	Rossville
1995	Stephanie White	Seeger	1998	Kelly Komara	Lake Central
2003	Katie Gearlds	Beech Grove	2005	Jodi Howell	Alexandria
2008	Brittany Rayburn	Attica	2010	Courtney Moses	Oak Hill
2017	Karissa McLaughlin	Homestead	2021	Jayla Smith	Lawrence North

**THE WORLD NEEDS MORE**

- Head coach Katie Gearlds has placed an emphasis on returning Purdue Women's Basketball back to the national stage.
- To reach that goal, the program's new culture is centered around success on and off the court.
- Dedicated to empowering student-athletes, Gearlds posed a question to the players ahead of the season. The answers are displayed on the backs of the Boilermakers' shooting shirts.

**What does the world need more of?**

Katie Gearlds — Hope	Beth Couture — Compassion
Micheal Scruggs — Faith	Alex Guyton — Understanding
Anastacia Kirby — Freedom	Jaelen Nice — Faith
Lakan Hasser-Smith — Trust	Abbey Ellis — Courage
Cassidy Hardin — Love	Caitlyn Harper — Hope
Ainhwa Holzer — Wisdom	Madison Layden — Compassion
Ava Learn — Love	Lasha Petree — Jesus
Addison Potts — Love	Jayla Smith — Justice
Lilly Stoddard — Faith	Jeanae Terry — Genuineness

Rickie Woltman — Acceptance

**RANDOM ODDS AND ENDS**

Name	Consecutive Made Free Throws	Straight Games with a Three	Consecutive Starts
2 - Holzer	-	-	-
3 - Smith	5	3	-
5 - Hardin	5	12	1
10 - Terry	1	-	51
11 - Petree	1	1	1
14 - Learn	15	-	-
23 - Ellis	15	-	4
30 - Potts	-	-	-
31 - Stoddard	-	-	-
33 - Layden	3	1	-
34 - Harper	8	-	57*
35 - Woltman	3	-	-

Opening Tips	Won-Lost	Record in Games
Ava Learn	0-2	1-1
Lasha Petree	6-10-1	12-4
Jayla Smith	0-1	0-1

Scoring First	2	3	FT	Record in Games
Cassidy Hardin	1	2		2-1
Caitlyn Harper	2	1		2-1
Madison Layden	2	3		5-0
Lasha Petree	4	1		4-1
Jayla Smith	1			0-1
Jeanae Terry	2			0-2

**PURDUE AT MACKEY ARENA**

Broke Ground: July 1965

First Game: Dec. 2, 1967

First Women's Game: Dec. 2, 1975 | Purdue 78, Illinois 74

Gearlds Overall: 19-9 | Non-Con: 13-1 | BIG: 6-8

Purdue Overall: 489-175 | Non-Con: 246-71 | BIG: 243-104

Home Wins vs. Ranked Teams: 53

**LARGEST CROWDS OF KG ERA**

Attendance	Date	Opponent	Result
8,005	1/16/22	No. 5 Indiana	L, 73-78 (OT)
5,457	12/21/21	North Alabama	W, 86-53
5,003	1/21/23	Minnesota	W, 75-56
4,811	2/27/22	Wisconsin	L, 63-62
3,552	1/3/23	Wisconsin	W, 73-61



**BIG TEN STANDINGS**

	Big Ten	Overall	Streak
Ohio State	8-1	19-1	L1
Iowa	8-1	16-4	W5
Indiana	8-1	18-1	W6
Maryland	7-2	16-4	W3
Illinois	6-3	16-4	W1
Michigan	6-3	16-4	L1
Nebraska	4-5	12-8	L1
Purdue	4-5	13-6	W1
Michigan State	3-6	11-9	W1
Penn State	3-6	12-8	W1
Wisconsin	2-7	6-14	L3
Rutgers	2-7	8-13	L3
Minnesota	2-7	9-11	L1
Northwestern	0-9	6-13	L8

**NATIONAL RANKINGS**

	National	BIG	Stat
Assist-to-Turnover	54	7	1.07
Assists per Game	22	5	171
Blocked Shots per Game	146	10	3.3
Field-Goal %	22	6	46.3
Field-Goal % Defense	93	3	38.2
Fouls Per Game	149	5	16.6
FT Made Per Game	164	11	17.0
FT Attempts Per Game	74	8	74.5
Fouls Per Game	131	9	12.6
Rebound Margin	162	9	1.3
Defensive Rebounds Per Game	66	6	27.5
Offensive Rebounds Per Game	322	14	8.8
Rebounds Per Game	202	11	36.3
Scoring Defense	219	7	65.4
Scoring Margin	90	8	8.0
Scoring Offense	58	10	73.4
Steals Per Game	181	10	7.8
3-Point Attempts Per Game	101	6	21.6
3-Point Percentage	66	7	34.3
3-Point Percentage Defense	201	7	31.2
3-Pointers Per Game	71	6	7.4
Turnover Margin	201	10	-1.6
Turnovers Forced Per Game	219	10	15.7
Turnovers Per Game	163	8	15.9
Winning Percentage	79	7	68.4

**INDIVIDUAL NATIONAL RANKINGS (TOP-50)**

TOP 50 RANKINGS	National	BIG	Stat
<b>Abbey Ellis</b>			
Free Throw Percentage	22	1	89.3

**Jeanae Terry**

Assist-to-Turnover	34	5	2.33
Assists	6	2	133
Assists Per Game	8	2	7.0

**BOILER NOTES****LAYDEN IS LITERALLY EVERYWHERE**

- Junior Madison Layden continues to be an all-around producer with 6.9 points, 3.4 assists and 4.0 rebounds per game.
- The second-year captain has recorded a steal in 56 of her 68 career games.
- Layden connected on a quartet of triples against Michigan to score a season-high 16 points.
- She went 5-of-8 from outside against Florida State for 15 points.
- Layden missed the Illinois State and Texas A&M games through illness. She returned against Iowa to score eight points and hit a pair of three off the bench.
- Last year, Layden was one of just 10 players nationally to accumulate 130 rebounds (134), 80 assists (80), 60 three-pointers (63) and 45 steals (49).
- Layden was tabbed All-Big Ten honorable mention last year and All-Big Ten Freshman Team in 2020-21.
- She hit double figures in 21 of 29 outings last year.

**JAYLA'S SOPHOMORE JUMP**

- Jayla has tallied 8.7 points per game this season with eight games in double figures.
- Smith joined the starting lineup for the first time this season against Wisconsin.
- Smith made significant strides during the offseason to set up a more important role during her sophomore season.
- She matched her career high in her sophomore debut with 16 points against Marshall, including a pair of clutch 3-pointers to seal the win.
- Smith scored over 1,000 points, won one IHSAA 4A State Championship (2020 over Layden's Northwestern) and was named Indiana Miss Basketball during her prep career.

**RANKED MATCHUPS**

- Head coach Katie Gearlds snapped a 19-game skid to ranked teams with a 66-61 win over No. 17 Florida State last season.
- Purdue is 1-9 in ranked games under Gearlds.
- Purdue fell on a 3-point buzzer beater earlier this season to No. 20 Maryland at Mackey Arena, 77-74.
- Purdue's last win against a ranked Big Ten team came on Jan. 20, 2019, against No. 20 Indiana.
- The last road ranked win came in 2018 against No. 10 Maryland.
- Gearlds was 23-22 against ranked teams during her playing days in West Lafayette. Her highest ranked win was over No. 5 Kansas State as a freshman in 2003.

**DOCTOR, DOCTOR GIVE ME THE THREE**

- Cassidy Hardin's final year in West Lafayette averaging 72 points per game with 38 of her 46 made field goals coming from behind the arc.
- In her career, Hardin has made 192 3-pointers and just 31 2-point shots.
- She is sixth in Purdue history in career 3-pointers.
- Hardin returned for a final year in West Lafayette as a fifth-year senior with the extra year of eligibility by the NCAA. Hardin came back after deferring her start to IU Medical School to next fall with the goal of getting Purdue to the NCAA Tournament.
- With her decision, Hardin is just the third player in program history to play in five different seasons.
- A do-everything-for-the-program player, Hardin has one of the quickest catch and releases in the Big Ten. She also has no program playing post defense or laying her body on the line as the team's leader in charges taken. Hardin jumped into the starting lineup for the first time in her career last season and connected on a career-high 78 3-pointers at a 33.5% clip.
- The Bargersville, Ind., native graduated with a degree in honors biochemistry in May of 2022. Her current specialty she would like to pursue is anesthesiology.

**GONNA LEARN TODAY**

- Learn is scoring 3.9 points in 11.3 minutes per night.
- Learn made her first career start on the road at Northwestern.
- The sophomore gave the Boilermakers a huge spark in their come-from-behind win over Oklahoma State, scoring 12 points and going 8-of-10 at the line.
- Against Wisconsin, Learn went for 12 points on 5-of-5 shooting from the field and 2-of-2 free throws. Ten of her points came over a five-minute span in the third quarter.
- Learn added another spark against Penn State with eight points in a career-high 23 minutes of action.
- After seeing her minutes drive up at the end of her freshman season, Learn embraced her role as an all-hustle utility player on the court and electric factory on the bench.

**IN THE NON-CON**

- The Boilermakers wrapped up non-conference action with a 9-1 record, the best mark since Katie Gearlds was a freshman in 2003-04 (10-1)
- The 9-1 clip tied for the third best in program history with teams from 2001-02, 1998-99, 1990-91 and 1989-90. The program's best mark was 11-1 in 2002-03.
- Lasha Petree paced Purdue with 18.2 points per game with Abbey Ellis and Caitlyn Harper adding 11.2 points each.
- Gearlds now has an 18-3 mark in non-conference play at Purdue. Her 85.7% winning clip is second in program history behind Marsha Reall, who went 8-1 in the 1986-87 season.

**OT BOILERS**

- Purdue has played in two overtime games under head coach Katie Gearlds with a 1-1 mark. The Boilermakers outlasted Michigan State this season 76-71 in an extra period.
- The Boilermakers are 34-29 all-time in overtime games.
- As a player, Gearlds was 5-2 when needing an extra frame.

**WISE WOLTMAN**

- Rickie Woltman has provided big minutes throughout the season off the bench inside.
- The senior is averaging 3.9 points and 3.5 rebounds 13.2 minutes per game.
- With Harper in foul trouble, Woltman fell two rebounds shy of a double-double against Minnesota, going for 10 points and eight boards in 24 minutes of work.
- Woltman, a starter in 22 games last year, completely bought into her new role off the bench during the offseason to provide a one-two punch with Harper.

**START UNKNOWN, FINISH UNFORGETTABLE**

- Jeanae Terry wasted little time adding to her historic resume with the first two non-point double-doubles in Purdue history.
- Going for 10 assists and 10 rebounds against Marshall, Terry is just the fifth player from the Big Ten since 2009 to achieve such a feat.
- The senior did it again against Marshall with 10 rebounds, 10 assists and nine points, becoming just the fifth player in the nation over the last 15 seasons to record multiple non-point triple-doubles.
- Terry became the 13th Boilermaker in program history to go for a double-double in the season opener.
- The senior is the first Boilermaker to record multiple triple-doubles in a season and a career with two last year.
- Terry is fueled by her personal mantra - Start unknown. Finish unforgettable.
- Only five players in the nation have record two non-point double-doubles since 2009.

Player	Team	Date,Opp	Stat
Jeanae Terry	Purdue	11/10/22, Marshall	10r, 10a
Jaz Shelly	Nebraska	2/3/22, Penn State	12r, 11a
Samantha Logic	Iowa	11/16/14, Robert Morris	14r, 11a
Samantha Logic	Iowa	12/28/12, Texas	15r, 14a
Lacey Simpson	Illinois	11/18/09, Central Mich.	16r, 11a

**BOILER NOTES****TRIPLE-DOUBLE HISTORY**

- Jeanae Terry stands alone in Purdue history, men's & women's basketball, as the only player to ever record multiple triple-doubles in a career.
- The junior recorded the fourth triple-double in program history with 10 points, 11 rebounds and 12 assists against Minnesota, made more impressive by not committing a turnover in the win.
- Her first career triple-double came against Miami in December when she went for 11 points, 12 rebounds and 10 assists.
- In both of her triple-double performances, the last category Terry hit double digits in was points.
- Terry is tied for fifth in Big Ten history.
- Terry now sits with Stephanie White and Danielle Campbell as the only Boilermakers in triple-double club.

**PURDUE TRIPLE-DOUBLES**

Name	Opponent	Date	Points	Rebounds	Assists/Blocks
Jeanae Terry	Minnesota	1/27/22	10	11	12 asts.
Jeanae Terry	Miami	12/19/21	11	12	10 asts.
Stephanie White	Indiana	1/22/99	20	11	10 asts.
Danielle Campbell	Butler	11/17/07	12	11	11 blks.
Joe Barry Carroll*	Arizona	12/10/77	16	16	11 blks.

\* BoilerBall all-time leader in rebounds and blocked shots.

**BTN PREDICTIONS**

- Ahead of the season, Big Ten Network's analyst Meghan McKeown, unveiled her top-20 players and best transfers.
- McKeown tabbed Madison Layden No. 18 in her preseason top-20 impact players in the league.
- 2022 WAC Player of the Year Caitlyn Harper was also picked as one of the top-11 transfers to the Big Ten.
- On the eve of the regular season, McKeown highlighted the Boilermakers as the top sleeper team in the conference.

**THE FIRST FIVE, THE KG 5 (NAME STILL UNDER CONSIDERATION)**

- On National Signing Day, head coach Katie Gearlds welcome five high school seniors to the Boilermaker family, including two ESPNW Top 100 players.
- The class was ranked No. 21 by ESPNW.
- The first recruiting class that Gearlds had a full year to study, Mary Ashley Groot, McKenna Layden, Rashunda Jones, Sophie Swanson and Emily Monson will join Purdue in the summer of 2023.
- Mary Ashley Groot is a 6-2 forward from New York City tabbed a four-star prospect and part of Prospect Nation's Elite 150 and No. 97 by ESPNW
- Rashunda Jones is a 5-8 guard from Washington, Ind., earning four stars, a 93 rating and the No. 79 player by ESPNW.
- Sophie Swanson, a 5-10 guard from Barrington, Ill., was named the 2022 Illinois Miss Basketball after leading Barrington High School to Illinois runner-up honors.
- Emily Monson was named a Prospects Nation Elite 150 member as a 6-0 guard out of Murfreesboro, Tenn.
- The Layden legacy at Purdue will continue with McKenna, a 6-1 guard from Kokomo, Ind., and the little sister of Madison also garnered Elite 150 status from Prospect Nation.
- Monson, Jones, Layden and Groot were all tabbed McDonald's All-America Game nominees.

**A HISTORY OF WINNING**

- Putting on the Old Gold & Black carries with it a standard that was set more than three decades ago when the Boilermakers lifted their first Big Ten title in 1991.
- Purdue is the only Big Ten team to win a national championship in women's basketball.
- Despite not reaching the Big Dance since 2016-17, the Boilermakers' 26 NCAA Tournament appearances are tied with Ohio State for second in the Big Ten behind Iowa's 28.
- With its last Big Ten Tournament title coming in 2013, Purdue owns the record for most league tourney championships with nine (1998-99-2000-03-04-07-08-12-13)
- Purdue has won seven Big Ten regular season championships, good for fourth in the league, with the last one coming in 2002.

**HITTING ONE HUNDRED**

- The Boilermakers put up 100 points in their 42-point victory over SIUE, the second century game
- Four different Boilermakers finished in double figures, led by Abbey Ellis' 29 points, the most by a Purdue player ever off the bench.
- Purdue shot a blistering 56.5% from the field, only going 5-of-17 from deep, while matching SIUE's total output with 58 points in the paint.
- The Boilermakers flipped 25 Cougar turnovers in 42 points.
- The Boilermakers scored 101 points against Denver on Dec. 12, 2021, the first 100-point performance since scoring 109 against Central Michigan on Dec. 28, 2013

**BALLIN' IN MEXICO**

- The Boilermakers posted a 2-1 record during their time at the Cancun Challenge over Thanksgiving weekend with wins over Oklahoma State and Harvard.
- Jeanae Terry and Lasha Petree garnered all-tournament honors.
- Lasha Petree topped 20 points in a pair of games to finish with 19.3 over the three outings at a 47.9% shooting clip.
- Terry went for 8.0 points, 10.7 rebounds and 7.1 assists per game, totaling 22 of Purdue's 55 helpers on the weekend.
- Following a 22-point win over Harvard, the Boilermakers suffered their first setback of the season with a one-point loss to Florida State.
- Gearlds' fired her squad up for the tournament finale, as the Boilermakers rallied from a nine-point deficit in the second half to beat Oklahoma State 71-65, closing the game on an 11-2 run.

**WBOF INDUCTEE CAROLYN PECK**

- Former Purdue head coach Carolyn Peck was named a member of the Women's Basketball Hall of Fame class of 2023.
- Peck served as Purdue's head coach for two seasons and led the Boilermakers to the 1999 NCAA National Championship, the only Big Ten team to win a women's basketball title.
- Following two seasons in West Lafayette, Peck coached the WNBA Orlando Miracle and at Florida. She also served on staff at Vanderbilt under her former player and Purdue standout Stephanie White.
- Peck has also served as one of the premier women's basketball analysts for ESPN.

**NEW YEAR, NEW CULTURE**

- The Boilermakers are **ALL-IN** this season under head coach Katie Gearlds. Gearlds, who took over the program a mere 47 days prior last year, had a full offseason to establish a new culture and bring back elite expectations to this storied program.
- On top of spending the full offseason implementing an overhaul of the offense and defensive principles (rather than adjusting on the fly last year), the squad spent the summer building a culture centered on leadership and excellence on and off the court.
- Prior to the first practice of the year, the coaching staff asked the team for goals. The primary goal was taking the next step for the program and return it to the NCAA Tournament.

**PURDUE SPECIALTY STATS (PURDUE/OPP)**

	Off TO	Paint	2nd-Ch.	Fast B.	Bench
Marshall	13-6	28-30	12-6	13-5	16-9
Murray State	17-6	46-24	9-9	15-6	23-13
SIUE	42-7	58-22	12-8	23-2	44-23
Indiana State	15-23	34-18	1-7	21-7	26-25
Harvard	14-11	46-24	10-15	10-4	31-14
FSU	20-16	24-40	14-15	14-9	20-24
Okla. State	14-7	28-24	17-4	8-10	29-4
Syracuse	13-16	54-28	9-17	13-8	33-3
MSU	21-18	34-30	15-9	18-15	23-17
Maryland	19-25	34-28	6-17	2-15	26-23
Illinois State	14-10	32-22	9-7	8-3	21-12
Texas A&M	14-9	28-20	7-13	9-2	8-6
Iowa	15-8	24-28	7-13	7-6	19-19
Wisconsin	30-12	40-24	8-11	12-8	24-6
Penn State	14-11	24-26	6-10	6-15	12-19
Michigan	10-16	24-32	6-20	11-0	13-17
NU	20-8	26-22	9-0	12-13	21-14
Nebraska	11-14	20-36	11-14	11-7	19-23
Minnesota	20-2	34-20	6-11	0-3	29-5
Ohio State					
Indiana					
Rutgers					
NU					
MSU					
Indiana					
Penn State					
Minnesota					
Totals	337-214	638-478	174-206	213-138	437-276
Averages	19.8-11.3	33.6-25.2	9.2-10.8	11.2-7.3	23.0-14.5

**PURDUE SCORING BY CLASS**

	Fr.	So.	Jr.	R-Sr./Sr.	5th
Marshall	-	16	13	22	22
Murray State	-	12	15	37	26
SIUE	2	9	3	65	21
Indiana State	-	18	10	14	35
Harvard	2	10	-	41	32
FSU	-	3	15	31	26
Okla. State	-	15	6	29	21
Syracuse	-	18	4	31	34
MSU	-	8	9	30	29
Maryland	-	4	4	41	25
Illinois State	-	15	-	30	19
Texas A&M	-	8	-	29	22
Iowa	-	9	8	19	32
Wisconsin	-	20	-	32	21
Penn State	-	19	-	26	15
Michigan	-	16	16	17	10
NU	-	13	8	39	5
Nebraska	-	13	-	36	15
Minnesota	-	13	6	30	26
Illinois					
Ohio State					
Indiana					
Rutgers					
NU					
MSU					
Indiana					
Penn State					
Minnesota					
Totals	4	239	117	599	436
Averages	0.2	12.6	6.2	31.5	22.9

**IBHOF INDUCTEE KATIE DOUGLAS**

- Purdue legend Katie Douglas was named to the Indiana Basketball Hall of Fame Class of 2023 and will be inducted during a ceremony in April.
- Douglas is the 16th Boilermaker to earn the prestigious honor.
- The graduate from Perry Meridian was an Indiana All-Star and guided Purdue to its two national championship game appearances, including the 1999 title.
- Douglas then played in the WNBA, winning the 2012 WNBA title, reaching five All-Star Games and five WNBA All-Defensive Team honors.

Hall of Famer	Class	Hall of Famer	Class
Carmella Martin	2003	MaChelle Joseph	2015
Darlene Zinn	2006	Beth Millard	2015
Debbie Funkhouser	2008	Jennifer Jacoby	2017
Sharon Versyp	2010	Tricia Cullop	2018
Laura Newcomb	2011	Cindy Lamping	2018
Annie Kvachkoff	2013	Pat Grimm*	2019
Brenda Keslay	2014	Stephanie White	2022
Teri Moren	2014	Katie Douglas	2023

**FIRST ROUNDERS ON THE SIDELINES**

- Head coach Katie Gearlds is on of just seven former top-10 picks in the WNBA Draft to serve as a head coach this season.
- Gearlds was taken seventh overall by the Seattle Storm in 2007, Purdue's highest draft pick.

TOP-10 WNBA PICKS & CURRENT DI HEAD COACHES			
Name	School	Year - Pick, Team	
DeLisha Milton-Jones	Old Dominion	1999 - 4th, Los Angeles	
Dawn Staley	South Carolina	1999 - 9th, Charlotte	
Tamika Williams-Jeter	Dayton	2002 - 6th, Minnesota	
Kara Lawson	Duke	2003 - 5th, Sacramento	
Nicole Powell	UC Riverside	2004 - 3rd, Charlotte	
Lindsay Whalen	Minnesota	2004 - 4th, Connecticut	
Katie Gearlds	Purdue	2007 - 7th, Seattle	
Laura Harper	Towson	2008 - 10th, Sacramento	

**MVP HEAD COACHES**

- Head coach Katie Gearlds is on of just seven former top-10 picks. Prior to her All-American career at Purdue, Gearlds was named the 2003 Indiana Miss Basketball and MVP of the McDonald's All-America Game, alongside LeBron James.

MCDONALD'S ALL-AMERICA MVP & CURRENT DI HEAD COACH			
Name	School	Year	Alma Mater
Bobby Hurley	Arizona State	1989	Duke
Jerry Stackhouse	Vanderbilt	1993	North Carolina
Shaheen Holloway	Seton Hall	1996	Seton Hall
Katie Gearlds	Purdue	2003	Purdue

**SINGLE-SEASON TURNAROUND**

- Katie Gearlds guided Purdue to 17 wins this season after inheriting a squad that won just seven contests in 2020-21 47 days ahead of the year.
- The 10-win improvement is the most by a first-year head coach in program history and tied for the third best overall.

SINGLE-SEASON WIN IMPROVEMENTS			
SEASON	WINS	IMPROVEMENT	COACH
1994	13	+13	Linn Dunn
1999	34	+11	Carolyn Peck
2022	17	+10	Katie Gearlds
1981	14	+10	Dr. Ruth Jones
2006	26	+9	Kristy Curry
2016	20	+9	Sharon Versyp

**AT THE ALMA MATER**

- After an All-American career at Purdue, head coach Katie Gearlds returned to her alma mater in 2021-22 to return the program to national prominence.
- This season, Gearlds is one of 32 coaches in Division I to lead their alma mater.
- She is one of 17 coaches in the six major basketball conferences to lead her alma mater.

Katie Gearlds	Purdue	Lindsay Whalen	Minnesota
Brooke Wychoff	Florida State	Amy Williams	Nebraska
Niele Ivey	Notre Dame	Nicole Powell	Stanford
Felisha Legette-Jack	Syracuse	Robin Harmony	Miami
Krista Gerlich	Texas Tech	Kellie Harper	Tennessee
Jim Flanery	Creighton	Mike Neighbors	Arkansas
Doug Bruno	DePaul	Scott Rueck	Oregon State
Anthony Bozzella	Seton Hall	Adia Barnes	Arizona
Denise Dillon	Villanova		

**SENIOR LEADERSHIP**

- Purdue's roster features six players classified as a senior (Terry, Ellis, Woltman), redshirt senior (Harper) or a fifth year senior (Hardin, Petree).
- The elder group entered the season with 558 combined games of experience under their belts.
- The six seniors are tied for the most in the Big Ten (including graduate students) with Michigan state, Penn State, Maryland and Ohio State.

**MOST SENIORS**

School	Senior/Grads	School	Senior/Grads
Purdue	6	Maryland	6
Michigan St.	6	Ohio St.	6
Penn St.	6	Michigan	5
Indiana	4	Iowa	4
Minnesota	4	Indiana	4
Iowa	4	Minnesota	4
Nebraska	3	Illinois	2

**STARTING FIVE RETURNS**

- The Boilermakers brought back their entire starting lineup from 2021-22 with 145 of a possible 160 starts back in West Lafayette.
- Aided by the NCAA waiver following the COVID-19 pandemic, Cassidy Hardin will become just the third player to play in five different seasons in program history.
- The five returners match the most by a Boilermaker squad in the last 10 years, joining the 2019-20 campaign.
- Even with Rickie Woltman, Cassidy Hardin, Jeanae Terry, Madison Layden and Abbey Ellis back for another year in West Lafayette, transfers Lasha Petree and Caitlyn Harper will enter their names into the lineup, meaning Purdue will have an experienced group coming off the bench.

Year	Returning Starters	Starts From Prev. Year	Final Record	NCAA
2013-14	3	97	22-9	Y
2014-15	2	59	11-20	
2015-16	3	94	20-12	Y
2016-17	3	101	23-13	Y
2017-18	2	78	20-14	
2018-19	3	114	19-15	
2019-20	5	170	18-14	
2020-21	3	98	7-16	
2021-22	2	41	17-15	
2022-23	5	145	-	-

# 2022-23 PURDUE WOMEN'S BASKETBALL GAME NOTES

## PURDUE IN THE POLLS

Week	AP	Coaches	NET
Preseason	-	-	-
Week 1	-	-	-
Week 2	-	-	-
Week 3	-	-	-
Week 4	-	-	-
Week 5	RV	-	36
Week 6	-	-	44
Week 7	-	-	38
Week 8	-	-	39
Week 9	-	-	43
Week 10	-	-	48
Week 11	-	-	48
Week 12	-	-	46
Week 13	-	-	-
Week 14	-	-	-
Week 15	-	-	-
Week 16	-	-	-
FINAL	-	-	-

## SINGLE-GAME RECORDS

### SINGLE-GAME POINTS

Overall	41	Katie Gearlds	at Wisconsin	2/18/07
Senior	41	Katie Gearlds	at Wisconsin	2/18/07
Junior	37	MaChelle Joseph	at Michigan State	2/15/91
Sophomore	40	Shereka Wright	at Michigan	2/17/02
Freshman	34	Leslie Johnson	at Vanderbilt	12/5/93

### SINGLE-GAME FIELD GOALS

Overall	16	MaChelle Joseph	at Michigan State	2/15/91
Senior	14	Jannon Roland	at Ohio state	1/23/97
Junior	16	MaChelle Joseph	at Michigan State	2/15/91
Sophomore	15	Shereka Wright	at Michigan	2/17/02
Freshman	13	Leslie Johnson	Northwestern	2/27/94

### SINGLE-GAME 3-POINTERS

Overall	12	Brittany Rayburn	at Minnesota	1/12/12
Senior	12	Brittany Rayburn	at Minnesota	1/12/12
Junior	7	Karissa McLaughlin	at Michigan State	1/30/20
Sophomore	9	2x, K. McLaughlin	Northwestern	2/17/19
Freshman	6	5x, Madison Layden	at Iowa	1/18/21

### SINGLE-GAME FREE THROWS MADE

Overall	16	Shereka Wright	Penn State	1/16/03
Senior	13	2x, Shereka Wright	at Northwestern	2/15/04
Junior	16	Shereka Wright	Penn State	1/16/03
Sophomore	14	3x, Courtney Moses	at Northwestern	1/26/12
Freshman	14	Leslie Johnson	Ohio State	2/13/94

### SINGLE-GAME REBOUNDING

Overall	25	Leslie Schultz	at Miami (OH)	12/2/81
Senior	20	Joy Holmes	at Wisconsin	1/27/91
Junior	25	Leslie Schultz	at Miami (OH)	12/2/81
Sophomore	20	Cathey Tyree	at Michigan State	1/11/85
Freshman	23	Natasha Cender	Michigan	2/7/76
Offensive	12	Joy Holmes	Minnesota	2/10/91
Defensive	16	2x, Whitney Bays	at Dayton	12/7/14

### SINGLE-GAME ASSISTS

Overall	16	MaChelle Joseph	Northern Illinois	3/22/92
Senior	16	MaChelle Joseph	Northern Illinois	3/22/92
Junior	14	Lisa Jahner	Michigan	3/7/87
Sophomore	12	MaChelle Joseph	New Mexico State	12/29/89
Freshman	11	3x, K. McLaughlin	Penn State	1/28/18

### SINGLE-GAME BLOCKS

Overall	11	Danielle Campbell	Butler	11/17/07
Senior	9	Ae'Rianna Harris	at #5 South Carolina	12/15/19
Junior	11	Danielle Campbell	Butler	11/17/07
Sophomore	7	3x, Ae'Rianna Harris	Lamar	11/18/17
Freshman	7	2x, Nora Kiesler	at Penn State	1/30/16

### SINGLE-GAME STEALS

Overall	12	Joy Holmes	Minnesota	1/13/89
Senior	9	Michelle Duhart	Michigan State	2/24/00
Junior	10	Cherelle george	South Carolina	11/26/05
Sophomore	12	Joy Holmes	Minnesota	1/13/89
Freshman	8	FahKara Malone	Illinois	2/8/07

## BOILER NOTES

• Check out which Boilermakers are climbing the single-season and career charts this year.

### CAREER 3-POINTERS

1.	Karissa McLaughlin	244	2018-21
2.	Courtney Moses	240	2011-14
3.	Katie Gearlds	238	2004-07
4.	Brittany Rayburn	201	2009-12
5.	Dominique Oden	193	2017-20
6.	<b>Cassidy Hardin</b>	<b>192</b>	<b>2019-Present</b>
7.	Jodi Howell	188	2006-10
8.	Stephanie White	183	1996-99
9.	Ashley Morrisette	181	2014-17
10.	Ukari Figgs	174	1996-99
11.	KK Houser	167	2010-14
12.	Beth Jones	157	2001-04
13.	MaChelle Joseph	154	1989-92
14.	Kelly Komara	137	1999-02
15.	Jannon Roland	133	1994-97
	<b>Madison Layden</b>	<b>132</b>	<b>2021-Present</b>

### CAREER ASSISTS AT PURDUE

11.	Ukari Figgs	409	1996-99
12.	Kelly Komara	402	1999-02
13.	Katie Gearlds	399	2004-07
14.	Ashley Morrisette	370	2014-17
15.	Karissa McLaughlin	362	2018-21
16.	Dominique Oden	345	2017-20
17.	<b>Jeanae Terry</b>	<b>316</b>	<b>2022-Present</b>
18.	Kayana Traylor	311	2019-21
19.	Cindy Lamping	308	1992-95
20.	Courtney Moses	294	2011-14
21.	Shereka Wright	291	2001-04
22.	Carol Emanuel	278	1980-83
23.	Sharika Webb	277	2003-06
24.	Teri Moren	275	1988-91
25.	Lindsay Wisdom-Hylton	273	2005-09

### CAREER TRIPLE-DOUBLES

1.	Jeanae Terry	2	2021-Present
----	--------------	---	--------------

### SEASON ASSISTS

1.	Lisa Jahner	201	1987-88
2.	Jeanae Terry	183	2021-22
3.	April Wilson	179	2015-16
4.	Ashley Morrisette	172	2016-17
5.	Erika Valek	171	2002-03
6.	MaChelle Joseph	167	1991-92
7.	KK Houser	161	2012-13
8.	Stephanie White	160	1997-98
9.	MaChelle Joseph	159	1990-91
	Jennifer Jacoby	159	1993-94
11.	Jennifer Jacoby	158	1994-95
12.	Stephanie White	156	1998-99
13.	MaChelle Joseph	152	1989-90
14.	MaChelle Joseph	159	1988-89
15.	FahKara Malone	148	2006-07
	<b>Jeanae Terry</b>	<b>133</b>	<b>2022-23</b>





# KATIE GEARLDS

HEAD COACH | 2ND SEASON AT PURDUE | 10TH SEASON OVERALL | PURDUE '07

@katiegearlds4  
@katiegearlds4

Year	Overall	BIG	Non-Con.	BIG Tourney	NCAAs	WNIT	Home	Road	Neutral	vs. Top-25	Unranked
2021-22	17-15	7-11	9-2	0-1	-	1-1	11-6	5-7	1-2	1-6	16-9
2022-23	13-6	4-5	9-1				8-3	3-2	2-1	0-3	13-3
<b>Totals</b>	<b>30-21</b>	<b>11-16</b>	<b>18-3</b>	<b>0-1</b>	<b>-</b>	<b>1-1</b>	<b>19-9</b>	<b>8-9</b>	<b>3-3</b>	<b>1-9</b>	<b>29-12</b>
<b>Pct.</b>	<b>.588</b>	<b>.407</b>	<b>.857</b>	<b>.000</b>	<b>-</b>	<b>.500</b>	<b>.679</b>	<b>.470</b>	<b>.500</b>	<b>.100</b>	<b>.707</b>

## RECORD-BREAKING FIRST YEAR

- Katie Gearlds reached the 250-win plateau for her career against Harvard, reaching the feat in 315 career games.

## RECORD-BREAKING FIRST YEAR

- The Katie Gearlds era started sooner than expected in 2021-22, when she took over the program a mere 47 days prior to the season opener.
- Despite being thrust into the head chair, Gearlds guided the program on its first step back to national prominence.
- Purdue finished 17-15 on the year, winning 10 more games than the previous campaign. It was the best win improvement by first-year head coach at Purdue and the third best in program history.
- The Boilermakers finished 10-2 in the non-conference, marking the second-best clip by a first-year head coach.
- Purdue snapped a 19-game skid against ranked opposition when Gearlds and the Boilermakers knocked off No. 17 Florida State at the St. Pete Showcase.
- The Boilermakers reached the postseason for the first time since 2017-18, ending the campaign in the second round of the WNIT.
- Abbey Ellis, Madison Layden and Jeanae Terry all garnered All-Big Ten honorable mention.

## COACHING EXPERIENCE

- Spent eight seasons taking Marian University winning back-to-back NAIA National Championships in 2016 and 2017.
- Went 228-50 record, an 82% clip with the Knights.
- Three-time NAIA National Coach of the Year, won 10 total Crossroads League titles and made seven appearances in the NAIA Tournament.
- Guided 12 WBCA NAIA All-America selections, compared to just five in the first 37 years of the program's existence.

## PROFESSIONAL CAREER

- Played professionally over six seasons
- Spent three seasons in the WNBA with the Seattle Storm,
- Was taken with the seventh overall pick in the 2007 WNBA Draft, the highest selection ever from Purdue
- Two of her closest teammates and friends over the years are WNBA legend Sue Bird and fellow WNBA great and New Orleans Pelicans Vice President of Basketball Operations Swin Cash.

## ALL-AMERICAN AT PURDUE CAREER

- Was a three-year starter from 2004-07.
- Ranks fourth in program history with 1,974 points and was the ninth fastest to join the 1,000-point club.
- Named a Legend of Mackey Arena for the 50th season.
- Won two Big Ten Tournament titles and never missed the NCAA Tournament with Gearlds in the squad
- Reached three Sweet 16s and one Elite Eight.
- Set the Purdue single-game record with 41 points at Wisconsin on Feb. 18, 2007, and scored 707 points to tie the single-season program record.
- 2007 Third Team AP All-America WBCA Honorable Mention
- Four-time All-Big Ten and the 2004 Big Ten Freshman of the Year.
- Earned a bachelor's degree in sociology and minored in psychology and communications from Purdue in 2007.

## KG Quips

Having a similar swagger she had in her playing days, Gearlds is always good for a quick quip and a motivational word for her players.

- **"All In"** – Gearlds' motto for the 2022-23 season. Developing a new culture.
- **"Let's Ride"** – Gearlds' motto for the 2021-22 season. Have fun, play loose.
- **"Be Tough to Beat"** – Drive to compete, work to improve and stay together.

## ONE-OF-A-KIND PREP CAREER

- Attended Beech Grove High School.
- Named the Indiana Miss Basketball in 2003.
- Amassed 2,521 career points, good for sixth in IHSAA history.
- Averaged 30.1 points, 9.4 rebounds, 5.4 assists and 5.1 steals per game to lead Beech Grove High School to the 2003 Class 3A State Championship.
- Nike/WBCA All-America, First Team All-State and the Gatorade Indiana Player of the Year.
- A McDonald's All-American, was named the MVP of the McDonald's All-America Game the same season as a young talent from Akron, Ohio - LeBron James.

## ELITE LEADERS

- Gearlds is the highest draft pick in Purdue history, going seventh overall to the Seattle Storm in 2007.
- She is one-of-eight current Division I head coaches who were also a Top-10 WNBA pick.
- The MVP of the 2003 McDonald's All-America Game alongside the boy's game honoree LeBron James, Gearlds is one-of-four former MVPs to be a head coach in 2021-22 and the only women's representative.

## INSPIRED BY GREATNESS

- Gearlds has a deep bench of basketball legends who have touched and continue to influence her career.
- One of the few people who can say they've worked with two G.O.A.T.s, Gearlds was the MVP of the 2003 McDonald's All-America Game with LeBron James.
- Sue Bird, her teammate with the Storm and a mentor over the last 15 years, inspired Gearlds to go into coaching.
- She also shared the court in Seattle with Swin Cash (V.P. New Orleans Pelicans), Adia Barnes (Arizona head coach) and Lauren Jackson (owner Melbourne Boomers).
- She competed against Chris Paul in the skills challenge ahead of the 2003 McDonald's All-America Game.

## AN INDIANA LEGEND

- One of the best products of Indiana basketball, Gearlds claimed a state title, a Big Ten championship and a national title with programs from the Crossroads State.
- Named Indiana Miss Basketball as a senior at Beech Grove in 2003, Gearlds guided the Hornets to a 3A state championship, setting a state record across all classes with 33 points in the final. Today, she ranks 11th in state history with 2,521 career points.
- As a Boilermaker from 2003-07, Gearlds reached the NCAA Tournament four times, won two Big Ten Tournament titles, sits fourth in Purdue history with 1,974 career points and holds the record for points in a season with 707 with Stephanie White.
- Following a six-year professional career, Gearlds took over the reins at Marian in Indianapolis, posting a 227-49 record over eight years, winning three NAIA Coach of the Year honors and claiming two national championships.

GEARLDS' YEAR-BY-YEAR					
Year	School	Overall	Conf.	Post.	Rank
2013-14	Marian	16-16	8-10	-	-
2014-15	Marian	28-6	14-4	NAIA R32	-
2015-16	Marian	32-6	16-2	NAIA Champ	No. 1
2016-17	Marian	35-3	17-1	NAIA Champ	No. 1
2017-18	Marian	32-3	17-1	NAIA R16	No. 8
2018-19	Marian	27-7	16-2	NAIA R32	No. 17
2019-20	Marian	31-3	16-2	NAIA R16	No. 13
2020-21	Marian	27-6	16-0	NAIA R32	No. 9
2021-22	Purdue	17-15	7-11	1-1	-
2022-23	Purdue	13-6	4-5		
10th Year		258-71	11-16	1-1	-

GEARLDS' TIMELINE	
2021-Present	Head Coach, Purdue
2013-21	Head Coach, Marian
2013	Toyota Huelva, Spain
2011-12	Orion Ibaizabal Galdakao, Portugal
2010	FEA Neas Halkindonas, Greece
2008	Kosit Kosice, Slovakia
2007-09	Seattle Storm, WNBA
2003-07	All-America Guard, Purdue
1999-03	All-America Guard, Beech Grove High School

POWER 5 COACHES UNDER 40			
Age	Name	School	Birthdate
35	Jacie Hoyt	Oklahoma State	4/2/1987
37	Kelly Rae Finley	Florida	4/27/1985
38	Katie Gearlds	Purdue	10/26/1984
39	Carolyn Kieger	Penn State	8/17/1983
39	Yolett McPhee-McCuin	Ole Miss	4/30/1983
39	Amaka Agugua-Hamilton	Virginia	4/13/1983

GEARLDS IN THE PURDUE RECORD BOOK			
Stat	Rank	Total	Year/Game
Single Game Points	1	41	Wisconsin, 2/18/07
Season Points	T1	707	2006-07
Career Points	4	1,974	2004-07
Career Average	4	14.8	2004-07
Season 10+ Point Games	3	33	2006-07
Career 10+ Point Games	4	102	2004-07
Season 30+ Point Games	2	4	2006-07
Career 30+ Point Games	2	6	2004-07
Season Field Goals	2	250	2006-07
Career Field Goals	3	711	2004-07
Season 3-Pointers	T1	88	2006-07
Career 3-Pointers	3	238	2004-07
Season Asst/TO	1	2.57	2005-06
Career Asst/TO	T2	1.64	2004-07
Season Minutes	1	1,359	2006-07
Career Minutes	2	4,475	2004-07



# 2022-23 ROSTER

No.	Name	Yr.	Pos.	Ht.	Hometown/High School/Previous School
2	Ainhua Holzer	Fr.	G	5-9	Martigny, Switzerland
3	Jayla Smith	So.	G	6-0	Indianapolis, Ind. / Lawrence North
5	Cassidy Hardin	5th.	G	5-10	Bargersville, Ind. / Center Grove
10	Jeanae Terry	Sr.	G	5-11	Detroit, Mich. / Wayne Memorial / Illinois
11	Lasha Petree	5th	G	6-0	Detroit, Mich. / Arbor Prep / Bradley / Rutgers
14	Ava Learn	So.	G	6-1	Hyde Park, N.Y. / Our Lady of Lourdes
23	Abbey Ellis	Sr.	G	5-6	Melbourne, Australia / Cal Poly
30	Addison Potts	Fr.	G	6-0	Fort Myers, Fla. / South Fort Myers
31	Lilly Stoddard	Fr.	F	6-4	Crown Point, Ind. / Crown Point
33	Madison Layden	Jr.	G	6-1	Kokomo, Ind. / Northwestern
34	Caitlyn Harper	R-Sr.	F	6-2	Hartland, Wisc. / Arrowhead / Cal Baptist
35	Rickie Woltman	Sr.	F	6-3	St. Louis, Mo. / Incarnate Word

Staff	Position	Year at Purdue	Year Coaching	Alma Mater
Katie Gearlds	Head Coach	2nd Year	10th Year	Purdue '07
Beth Couture	Associate Head Coach	7th Year	36th Year	Erksine '84
Michael Scruggs	Assistant Coach / Recruiting	4th Year	15th Year	Tennessee '08
Alex Guyton	Assistant Coach	4th Year	4th Year	Purdue '12
Tiffini Grimes	Deputy Athletic Director / SWA	1st Year		Purdue '05
Anastacia Kirby	Director of Operations	1st Year		Marian '17
Lakan Hasser-Smith	Director of Video / Recruiting	1st Year		Marian '16
Jason Pullara	Director of Strength & Conditioning	4th Year		Purdue '01
Jessica Lipsett	Director of Athletic Training / Physical Therapy	20th Year		Illinois '00
Jaelen Nice	Graduate Assistant	1st Year		Purdue '21
Ainhua Holzer	i-KNOW-ah	Beth Couture	COO-chur	
Ava Learn	AA-va	Katie Gearlds	Geralds (soft-g)	
Lasha Petree	LAY-sha pee-TREE	Lakan Hasser-Smith	LAKE-en	
Jeanae Terry	Jah-NAY			
Lilly Stoddard	STAH-dard			

## Associate Head Coach Beth Couture

**Alma Mater:** Erskine '84 | **Season at Purdue/Career:** 7th/36th  
**Select Experience:** Purdue Assistant (16-19), Converse College - Head Coach (14-15), Butler - Head Coach (02-14), Presbyterian - Head Coach (89-02)  
**Select Highlights:** 5 WNIT appearances and 4 20-plus win seasons at Butler, 6 NCAA Division II appearances, Kodak All-American during playing time at Erskine

## Assistant Coach Michael Scruggs

**Alma Mater:** Tennessee '08 | **Season at Purdue/Career:** 4th/10th  
**Select Experience:** Loyola-Chicago - Assistant (16-19), LSU - Director of Video Operations (12-14), Chattanooga - Assistant (09-11), Tennessee - Practice Player (04-08)  
**Select Highlights:** Practice player at Tennessee during Candace Parker's career, winning two national titles, also learned from Nikki Fargas at LSU and Wes Moore

## Assistant Coach Alex Guyton

**Alma Mater:** Purdue '12 | **Season at Purdue/Career:** 4th/4th  
**Select Experience:** Purdue - Director of Player Development (19-21), Eastern Illinois - Assistant (17-19), Carmel HS - Assistant (14-17)  
**Select Highlights:** Played 124 games w/On a pair of Big Ten Tournament titles, 3 NCAA Tournaments and an Elite Eight, coached Michigan's Amy Dilk while at Carmel

## Director of Video Lakan Hasser-Smith

**Alma Mater:** Marian '16 | **Season at Purdue/Career:** 1st/6th  
**Select Experience:** Marian - Assistant (17-21)  
**Select Highlights:** Marian all-time leading scorer, won an NAIA national title as a player and a coach with Katie Gearlds

## Director of Operations Anastacia Kirby

**Alma Mater:** Marian '17 | **Season at Purdue/Career:** 1st/1st  
**Select Highlights:** Won two NAIA national titles playing under Gearlds at Marian

## Associate Director of Sports Medicine Jessica Lipsett (Illinois '00)

20th season at Purdue, all with the women's basketball program - 2011 Indiana Athletic Trainers Association Trainer of the Year - Husband, Tanner, was the former WBB SID and now the Wrestling Director of Operations - Rumored to have magic healing powers



**2 AINHOA HOLZER**



**3 JAYLA SMITH**



**5 CASSIDY HARDIN**



**10 JEANAE TERRY**



**11 LASHA PETREE**



**14 AVA LEARN**



**23 ABBEY ELLIS**



**30 ADDISON POTTS**



**31 LILLY STODDARD**



**33 MADISON LAYDEN**



**34 CAITLYN HARPER**



**35 RICKIE WOLTMAN**



**KATIE GEARLDS**



**BETH COUTURE**



**MICHAEL SCRUGGS**



**ALEX GUYTON**

 **PURDUE WHEN**

## SCORING BY QUARTERS

**P** |  | **10**

2022-23 PURDUE WOMEN'S BASKETBALL GAME NOTES

TEAM GAME-BY-GAME COMPARISON

All Games	W/L	FG-FGA	FG%	3P-3PA	3%	FT-FTA	FT%	Off.	Def.	Tot.	F	Pts.	Ast.	TO	Stl.	Blk.
Purdue	W	30-53	56.6	7-17	41.2	31-37	83.8	8	31	39	19	98	23	19	8	6
Purdue Northwest (ex)	98-67	21-58	36.2	5-18	27.8	20-24	83.3	6	18	24	28	67	15	17	8	1
Purdue	W	27-59	45.8	11-29	37.9	8-14	57.1	11	25	36	13	73	16	12	10	5
Marshall	73-61	25-60	41.7	4-18	22.2	7-9	77.8	11	23	34	15	61	13	13	3	3
Purdue	W	35-69	50.7	9-21	42.9	11-12	91.7	12	27	39	18	90	25	7	5	5
Murray State	90-61	21-52	40.4	5-21	23.8	14-19	73.7	7	20	27	13	61	17	12	2	1
Purdue	W	35-62	56.5	5-17	29.4	25-36	69.4	8	30	38	16	100	15	13	14	2
SIUE	100-58	20-59	33.9	7-22	31.8	11-18	61.1	10	23	33	30	58	10	25	5	2
Purdue	W	26-51	51.0	9-19	47.4	16-24	66.7	4	31	35	15	77	21	18	8	2
Indiana State	77-54	20-63	31.7	8-22	36.4	6-8	75.0	12	23	35	23	54	14	21	12	4
Purdue	W	34-56	60.7	8-18	44.4	9-14	64.3	6	32	38	15	85	22	17	7	1
Harvard	85-63	22-67	32.8	8-21	38.1	11-15	73.3	14	17	31	15	63	9	12	7	3
Purdue	L	26-62	41.9	12-27	44.4	11-16	68.9	11	27	38	19	75	17	15	6	3
Florida State	76-76	30-65	46.2	5-20	25.0	11-20	55.0	12	26	38	19	76	12	14	7	4
Purdue	W	23-52	44.2	5-21	23.8	20-26	76.9	9	30	39	21	71	12	13	6	3
Oklahoma State	71-65	22-60	36.7	8-28	28.6	13-26	50.0	14	22	36	17	65	11	12	8	0
Purdue	W	33-61	54.1	3-17	17.6	18-22	81.8	9	35	44	16	87	17	21	4	6
Syracuse	87-78	28-77	36.4	7-21	33.3	15-20	75.0	17	21	38	18	78	7	12	9	2
Purdue	W (OT)	26-58	44.8	7-21	33.3	17-20	85.0	11	39	50	21	76	17	30	6	6
Michigan State	76-71	25-71	35.2	7-22	31.8	14-24	58.3	12	18	30	19	71	18	16	14	3
Purdue	L	26-47	55.3	7-20	35.0	15-21	71.4	5	23	28	13	74	14	22	10	4
Maryland	77-74	30-72	41.7	10-25	40.0	7-9	77.8	15	16	31	20	77	16	15	11	0
Purdue	W	24-47	51.1	4-14	28.6	12-13	92.3	7	25	32	18	64	13	18	7	5
Illinois State	64-51	17-58	29.3	4-24	16.7	13-16	81.3	15	16	31	14	51	8	14	6	3
Purdue	W	22-58	37.9	8-28	28.6	7-14	50.0	6	27	33	15	59	17	8	7	2
Texas A&M	59-53	19-57	33.3	5-23	21.7	10-16	62.5	13	32	45	17	53	9	15	6	4
Purdue	L	25-72	34.7	9-31	29.0	9-11	81.8	11	26	37	18	68	12	12	9	1
Iowa	83-68	28-59	47.5	11-27	40.7	16-27	59.3	11	37	48	13	83	15	15	6	3
Purdue	W	27-58	46.6	4-14	28.6	15-20	75.0	9	20	29	14	73	20	17	16	1
Wisconsin	73-61	23-47	48.9	6-20	30.0	9-17	52.9	7	22	29	19	61	16	26	10	2
Purdue	L	22-56	39.3	7-21	33.3	9-10	90.0	10	29	39	15	60	16	21	8	6
Penn State	70-60	25-65	38.5	9-18	50.0	11-17	64.7	15	24	39	14	70	14	15	12	3
Purdue	L	22-50	44.0	7-18	38.9	8-10	80.0	5	15	20	20	59	16	14	2	4
Michigan	80-59	28-56	50.0	7-17	41.2	17-20	85.0	11	22	33	16	80	14	13	2	2
Purdue	W	24-61	39.3	7-22	31.8	10-15	66.8	14	26	40	19	65	19	19	13	1
Northwestern	65-54	18-45	40.0	6-19	31.6	12-17	70.6	4	26	30	17	54	14	25	12	3
Purdue	L	20-50	40.0	9-23	39.1	15-18	83.3	11	22	33	18	64	13	17	6	2
Nebraska	71-64	24-60	40.0	6-22	27.3	17-21	81.0	13	18	31	13	71	11	11	5	3
Purdue	W	30-66	45.5	10-30	33.3	5-6	83.3	8	33	41	13	75	21	8	4	3
Minnesota	75-56	19-69	27.5	6-24	25.0	12-16	75.0	17	28	45	14	57	10	13	1	2
Purdue																
Illinois																
Purdue																
Ohio State																
Purdue																
Indiana																
Purdue																
Rutgers																
Purdue																
Northwestern																
Purdue																
Michigan State																
Purdue																
Indiana																
Purdue																
Penn State																
Purdue																
Minnesota																
Purdue																
Purdue																
Purdue																
Purdue																



# 2022-23 PURDUE WOMEN'S BASKETBALL GAME NOTES

## TEAM STATISTICS BREAKDOWN

All Games	Record	FG-FGA	FG%	3P-3PA	3%	FT-FTA	FT%	Off.	Def.	Tot.	Avg.	F	DQ	Ast.	TO	Blk.	Stl.	Pts.	Avg.
All Games	13-6	507-1095	.463	141-411	.343	240-322	.745	167	522	689	36.3	316	1	324	302	62	148	1395	73.4
		444-1162	.382	129-414	.312	226-335	.675	230	434	664	34.9	325	1	239	299	47	138	1243	65.4
Home	8-3	305-620	.492	78-222	.351	148-196	.755	89	286	375	34.1	173	1	191	167	39	86	836	76.0
		255-673	.379	70-236	.297	128-173	.740	135	232	367	33.4	194	0	137	175	24	66	708	64.4
Away	3-2	119-305	.390	38-123	.309	52-70	.743	52	147	199	39.8	88	0	82	90	16	43	328	65.6
		115-297	.387	38-109	.349	63-101	.624	55	137	192	38.4	80	1	70	86	16	50	331	66.2
Neutral	2-1	83-170	.488	25-66	.379	40-56	.714	26	89	115	38.3	55	0	51	45	7	19	231	77.0
		74-192	.385	21-69	.304	35-61	.574	40	65	105	35.0	51	0	32	38	7	22	204	68.0
Won	13-0	366-758	.483	90-271	.332	173-236	.733	114	380	494	38.0	213	1	236	201	42	107	995	76.5
		279-785	.355	81-285	.284	147-221	.665	153	291	444	34.2	230	1	156	216	32	95	786	60.5
Lost	0-6	141-337	.418	51-140	.364	67-86	.779	53	142	195	32.5	103	0	88	101	20	41	400	66.7
		165-377	.438	48-129	.372	79-114	.693	77	143	220	36.7	95	0	83	83	15	43	457	76.2
<b>Big Ten</b>	<b>Record</b>	<b>FG-FGA</b>	<b>FG%</b>	<b>3P-3PA</b>	<b>3%</b>	<b>FT-FTA</b>	<b>FT%</b>	<b>Off.</b>	<b>Def.</b>	<b>Tot.</b>	<b>Avg.</b>	<b>F</b>	<b>DQ</b>	<b>Ast.</b>	<b>TO</b>	<b>Blk.</b>	<b>Stl.</b>	<b>Pts.</b>	<b>Avg.</b>
All Games	4-5	222-518	.429	67-200	.335	103-131	.786	84	233	317	35.2	151	0	148	160	28	74	614	68.2
		220-544	.404	68-194	.351	115-168	.685	105	211	316	35.1	145	1	129	149	21	73	623	69.2
Home	2-3	125-271	.461	37-105	.352	58-75	.773	38	113	151	30.2	78	0	84	78	14	38	345	69.0
		124-304	.408	35-108	.324	62-83	.747	63	106	169	33.8	82	0	68	78	9	29	345	69.0
Away	2-2	97-247	.393	30-95	.316	45-56	.804	46	120	166	41.5	73	0	64	82	14	36	269	67.3
		96-240	.400	33-86	.384	53-85	.624	42	105	147	36.8	63	1	61	71	12	44	278	69.5
<b>Non-Conference Record</b>		<b>FG-FGA</b>	<b>FG%</b>	<b>3P-3PA</b>	<b>3%</b>	<b>FT-FTA</b>	<b>FT%</b>	<b>Off.</b>	<b>Def.</b>	<b>Tot.</b>	<b>Avg.</b>	<b>F</b>	<b>DQ</b>	<b>Ast.</b>	<b>TO</b>	<b>Blk.</b>	<b>Stl.</b>	<b>Pts.</b>	<b>Avg.</b>
All Games	9-1	285-577	.494	74-211	.351	137-191	.717	83	289	372	37.2	165	1	176	142	34	74	781	78.1
		224-618	.362	61-220	.277	111-167	.665	125	223	348	34.8	180	0	110	150	26	65	620	62.0
<b>Current Streak Record</b>		<b>FG-FGA</b>	<b>FG%</b>	<b>3P-3PA</b>	<b>3%</b>	<b>FT-FTA</b>	<b>FT%</b>	<b>Off.</b>	<b>Def.</b>	<b>Tot.</b>	<b>Avg.</b>	<b>F</b>	<b>DQ</b>	<b>Ast.</b>	<b>TO</b>	<b>Blk.</b>	<b>Stl.</b>	<b>Pts.</b>	<b>Avg.</b>
Overall	1-0	30-66	.455	10-30	.333	5-6	.833	8	33	41	41.0	13	0	21	8	3	4	75	75.0
		19-69	.275	6-24	.250	12-16	.750	17	28	45	45.0	14	0	10	13	2	1	56	56.0
<b>Month</b>	<b>Record</b>	<b>FG-FGA</b>	<b>FG%</b>	<b>3P-3PA</b>	<b>3%</b>	<b>FT-FTA</b>	<b>FT%</b>	<b>Off.</b>	<b>Def.</b>	<b>Tot.</b>	<b>Avg.</b>	<b>F</b>	<b>DQ</b>	<b>Ast.</b>	<b>TO</b>	<b>Blk.</b>	<b>Stl.</b>	<b>Pts.</b>	<b>Avg.</b>
November	7-1	239-472	.506	62-169	.367	118-164	.720	70	237	307	38.4	132	1	145	116	27	60	658	82.3
		188-503	.374	52-173	.301	88-135	.652	97	175	272	34.0	149	0	93	121	19	53	516	64.5
December	3-2	123-282	.436	35-114	.307	60-79	.759	40	140	180	36.0	85	0	74	90	18	39	341	68.2
		119-317	.375	37-121	.306	60-92	.652	66	119	185	37.0	83	1	67	75	13	43	335	67.0
January	3-3	145-341	.425	44-128	.344	62-79	.785	57	145	202	33.7	99	0	105	96	17	49	396	66.0
		137-342	.401	40-120	.333	78-108	.722	67	140	207	34.5	93	0	79	103	15	42	392	65.3
February																			
March																			
<b>Ranked/UR</b>	<b>Record</b>	<b>FG-FGA</b>	<b>FG%</b>	<b>3P-3PA</b>	<b>3%</b>	<b>FT-FTA</b>	<b>FT%</b>	<b>Off.</b>	<b>Def.</b>	<b>Tot.</b>	<b>Avg.</b>	<b>F</b>	<b>DQ</b>	<b>Ast.</b>	<b>TO</b>	<b>Blk.</b>	<b>Stl.</b>	<b>Pts.</b>	<b>Avg.</b>
vs. Ranked	0-3	73-169	.432	23-69	.333	32-42	.762	21	64	85	28.3	51	0	42	48	9	21	201	67.0
		86-187	.460	28-69	.406	40-56	.714	37	75	112	37.3	49	0	46	43	5	19	240	80.0
vs. Unranked	13-3	434-926	.469	118-342	.345	208-280	.743	146	458	604	37.8	265	1	282	254	53	127	1194	74.6
		358-975	.367	101-345	.293	186-279	.667	193	359	552	34.5	276	1	193	256	42	119	1003	62.7
<b>5-Game</b>	<b>Record</b>	<b>FG-FGA</b>	<b>FG%</b>	<b>3P-3PA</b>	<b>3%</b>	<b>FT-FTA</b>	<b>FT%</b>	<b>Off.</b>	<b>Def.</b>	<b>Tot.</b>	<b>Avg.</b>	<b>F</b>	<b>DQ</b>	<b>Ast.</b>	<b>TO</b>	<b>Blk.</b>	<b>Stl.</b>	<b>Pts.</b>	<b>Avg.</b>
1-5	5-0	157-297	.529	42-104	.404	69-100	.690	41	145	186	37.2	76	1	99	67	15	44	425	85.0
		108-301	.359	32-104	.308	49-69	.710	54	106	160	32.0	96	0	63	83	13	29	297	59.4
6-10	3-2	134-280	.479	34-106	.321	81-105	.771	45	154	199	39.8	90	0	77	101	22	32	383	76.6
		135-345	.391	37-116	.319	60-99	.606	70	103	173	34.6	92	1	64	69	9	49	367	73.4
11-15	3-2	120-291	.412	32-108	.296	52-68	.765	43	127	170	34.0	80	0	79	76	15	47	324	64.8
		112-286	.392	35-112	.313	59-93	.634	61	131	192	38.4	77	0	62	85	15	40	318	63.6
16-20	2-2	96-227	.423	33-93	.355	38-49	.776	38	96	134	33.5	70	0	69	58	10	25	263	65.8
		89-230	.387	25-82	.305	58-74	.784	45	94	139	34.8	60	0	49	62	10	20	261	65.3
21-25																			
26-30																			
31-35																			
36-40																			
<b>Postseason</b>	<b>Record</b>	<b>FG-FGA</b>	<b>FG%</b>	<b>3P-3PA</b>	<b>3%</b>	<b>FT-FTA</b>	<b>FT%</b>	<b>Off.</b>	<b>Def.</b>	<b>Tot.</b>	<b>Avg.</b>	<b>F</b>	<b>DQ</b>	<b>Ast.</b>	<b>TO</b>	<b>Blk.</b>	<b>Stl.</b>	<b>Pts.</b>	<b>Avg.</b>
Overall																			
Big Ten Tourney																			
NCAA																			

# 2022-23 PURDUE WOMEN'S BASKETBALL GAME NOTES

## INDIVIDUAL HIGHS

Stat	Purdue High	Purdue Low	Opp. High	Opp. Low
Points	100 SIUE (11/17/2022)	59 2x last Michigan (01/10/2023)	83 at Iowa (12/29/2022)	51 Illinois St. (12/11/2022)
Field Goals Made	35 2x last SIUE (11/17/2022)	20 Nebraska (01/18/2023)	30 2x last Maryland (12/08/2022)	17 Illinois St. (12/11/2022)
Field Goal Attempts	72 at Iowa (12/29/2022)	47 Maryland (12/08/2022)	77 Syracuse (11/30/2022)	45 at Northwestern (01/14/2023)
Field Goal Percentage	.607 (34-56) vs Harvard (N) (11/24/2022)	.347 (25-72) at Iowa (12/29/2022)	.500 (28-56) Michigan (01/10/2023)	.275 (19-69) Minnesota (01/21/2023)
3-Pointers Made	12 vs Florida St. (N) (11/25/2022)	3 Syracuse (11/30/2022)	11 at Iowa (12/29/2022)	4 2x last Illinois St. (12/11/2022)
3-Pointers Attempted	31 at Iowa (12/29/2022)	14 2x last vs. Wisconsin (1/1/2023)	28 vs Oklahoma St. (N) (11/26/2022)	17 Michigan (01/10/2023)
3-Point Percentage	.474 (9-19) Indiana St. (11/20/2022)	.176 (3-17) Syracuse (11/30/2022)	.500 (9-18) at Penn State (1/7/2023)	.167 (4-24) Illinois St. (12/11/2022)
Free Throws Made	25 SIUE (11/17/2022)	5 Minnesota (01/21/2023)	17 2x last Nebraska (01/18/2023)	6 Indiana St. (11/20/2022)
Free Throws Attempted	36 SIUE (11/17/2022)	6 Minnesota (01/21/2023)	27 at Iowa (12/29/2022)	8 Indiana St. (11/20/2022)
Free Throw Percentage	.923 (12-13) Illinois St. (12/11/2022)	.500 (7-14) at Texas A&M (12/21/22)	.850 (17-20) Michigan (01/10/2023)	.500 (13-26) vs Oklahoma St. (11/26/2022)
Rebounds	50 at Michigan St. (12/05/2022)	20 Michigan (01/10/2023)	48 at Iowa (12/29/2022)	27 Murray St. (11/13/2022)
Assists	25 Murray St. (11/13/2022)	12 2x last at Iowa (12/29/2022)	18 at Michigan St. (12/05/2022)	7 Syracuse (11/30/2022)
Steals	14 SIUE (11/17/2022)	2 Michigan (01/10/2023)	14 at Michigan St. (12/05/2022)	1 Minnesota (01/21/2023)
Blocks	6 3x last at Penn State (1/7/2023)	1 4x last at Northwestern (01/14/2023)	4 3x last at Texas A&M (12/21/22)	0 2x last Maryland (12/08/2022)
Turnovers	30 at Michigan St. (12/05/2022)	7 Murray St. (11/13/2022)	26 vs. Wisconsin (1/1/2023)	11 Nebraska (01/18/2023)
Fouls	21 2x last at Michigan St. (12/05/2022)	13 3x last Minnesota (01/21/2023)	30 SIUE (11/17/2022)	13 3x last Nebraska (01/18/2023)

## INDIVIDUAL HIGHS

Stat	Purdue Ind. High	Opponent Ind. High
Points	31 Lasha Petree vs Syracuse (11/30/2022)	26 Teisha Hyman vs Syracuse (11/30/2022)
Field Goals Made	13 Lasha Petree vs Syracuse (11/30/2022)	11 Teisha Hyman vs Syracuse (11/30/2022)
Field Goals Attempted	21 Lasha Petree vs Syracuse (11/30/2022)	25 Paige Robinson vs Illinois St. (12/11/2022)
3-Pointers Made	5 2x last Madison Layden vs Florida St. (N) (11/25/2022)	5 Naomie Alnatas vs Oklahoma St. (N) (11/26/2022)
3-Pointers Attempted	11 3x last Cassidy Hardin vs Minnesota (01/21/2023)	11 Naomie Alnatas vs Oklahoma St. (N) (11/26/2022)
Free Throws Made	8 3x last Caitlyn Harper vs Nebraska (01/18/2023)	7 2x last Laila Phelia vs Michigan (01/10/2023)
Free Throws Attempted	10 Ava Learn vs Oklahoma St. (N) (11/26/2022)	10 Kamaria McDaniel at Michigan St. (12/05/2022)
Rebounds	13 Jeanae Terry vs Harvard (N) (11/24/2022)	15 Alanna Micheaux vs Minnesota (01/21/2023)
Assists	12 Jeanae Terry vs Indiana St. (11/20/2022)	6 McKenna Marisa at Penn State (1/7/2023)
Steals	5 Jeanae Terry vs. Wisconsin (1/1/2023)	7 Leilani Kapinus at Penn State (1/7/2023)
Blocks	4 2x last Caitlyn Harper vs Michigan (01/10/2023)	2 10x last Calleigh Walsh at Northwestern (1/14/2023)

## MARGINS OF VICTORY/DEFEAT

	1	2	3	4	5	6	7	8	9	10	11	12	13	14	15	16	17	18	19	20	21+
Purdue					1	1			1		1	2							1		4
Opponent	1						1											1			1
When Leading											When Trailing										
Largest Margin of Victory											Largest Margin of Defeat										
Largest Overall Lead											Largest Overall Deficit										
Largest Halftime Lead											Largest Halftime Deficit										
Largest Lead in a Loss											Largest Deficit Overcome to Win										
Largest Halftime Lead in a Loss											Largest Halftime Deficit in a Win										
Largest Purdue Run											Largest Opponent Run										

## RESULTS/LEADERS

Date	P / O	Opponent	W/L	Score	High Scorer	High Rebounds	High Assists	High Steals	High Blocks	Attend
N6	- / -	Purdue NW	W	98-67	22 - Harper	6 - Harper	7 - Layden	2 - 3 Tied	2 - Harper, Hardin	2,740
N10	- / -	Marshall	W	73-61	17 - Harper	10 - Terry	10 - Terry	3 - Layden	4 - Harper	2,058
N13	- / -	Murray State	W	90-61	23 - Petree	10 - Terry	10 - Terry	2 - Harper	2 - Harper	2,866
N17	- / -	SIUE	W	100-58	29 - Ellis	7 - Terry	4 - 3 Tied	4 - Terry/Smith	1 - Petree/Learn	1,861
N20	- / -	Indiana State	W	77-54	18 - Hardin	7 - Layden	12 - Terry	2 - Hard/Ellis	1 - Smith/Woltman	3,065
N24	- / -	Harvard	W	85-63	23 - Petree	13 - Terry	8 - Terry	4 - Terry	1 - Terry	200
N25	- / -	Florida State	L	76-75	15 - Petree/Layden	12 - Terry	8 - Terry	2 - Terry/Petree	1 - 3 Tied	248
N26	- / -	Oklahoma State	W	71-65	20 - Petree	7 - Terry	6 - Terry	3 - Layden	1 - 3 Tied	136
N30	B1G/ACC	Syracuse	W	87-78	31 - Petree	8 - Harper	6 - Terry	2 - Terry	2 - Petree, Woltman	2,521
D5	B1G	Michigan State	W	76-71	18 - Petree	10 - Woltman	8 - Terry	2 - Terry	3 - Petree	3,015
D8	B1G	Maryland	L	77-74	18 - Ellis	6 - Hardin	6 - Terry	3 - Terry	2 - Petree, Layden	3,007
D11	- / -	Illinois State	W	64-51	14 - Petree	7 - Terry, Ellis	6 - Terry	3 - Petree	2 - Learn	3,429
D21	- / -	Texas A&M	W	59-53	15 - Harper	11 - Terry	7 - Terry	2 - Terry, Petree	1 - Terry, Petree	1,608
D29	B1G	Iowa	L	83-68	22 - Petree	8 - Terry	7 - Terry	3 - Terry	1 - Harper	11,942
J1	B1G	Wisconsin	W	73-61	18 - Petree	6 - Terry	7 - Terry	5 - Terry	1 - Layden	3,552
J7	B1G	Penn State	L	70-60	20 - Harper	9 - Terry, Harper	5 - Layden	3 - Petree	2 - Learn	2,367
J10	B1G	Michigan	L	80-59	16 - Layden	3 - Terry, Layden	5 - Terry	1 - Terry, Hardin	4 - Harper	3,473
J14	B1G	Northwestern	W	65-54	24 - Ellis	9 - Terry	10 - Terry	2 - 5 Tied	1 - Smith	1,566
J18	B1G	Nebraska	L	71-64	20 - Ellis	8 - Terry	4 - Layden	2 - Terry, Layden	1 - Terry, Ellis	2,796
J21	B1G	Minnesota	W	75-56	14 - Hardin	8 - Woltman	8 - Terry	1 - 4 Tied	1 - 3 Tied	5,003
J26	B1G	Illinois	- / 22							
J29	B1G	Ohio State								
F5	B1G	Indiana								
F9	B1G	Rutgers								
F12	B1G	Northwestern								
F15	B1G	Michigan State								
F19	B1G	Indiana								
F22	B1G	Penn State								
F26	B1G	Minnesota								
M1		Big Ten Tournament								

# 2022-23 PURDUE WOMEN'S BASKETBALL GAME NOTES

## THE LAST TIME

TEAM SCORING (GAME)		TEAM REBOUNDS		CONTINUED	
Won by 40+:	42 (80-38) at Ball State (11/7/18)	Had 20+ Rebound Margin:	20 (50-30) vs. Michigan State (12/4/22)	Five Players in Double Figures:	Karissa McLaughlin (23), Kayana Traylor (15), Ae'Rianna Harris (13), Dominique Oden (12), Jenelle Grant (11) vs. Illinois (1/17/20)
Won by 40+ (Big Ten):	43 (88-45) vs. Nebraska (1/26/17)	Had 25+ Rebound Margin:	30 (55-25) vs. USC Upstate (11/17/16)	10+Points in 10 Straight Games:	11, Lasha Petree (11/10/22-12/11/22)
Lost by 20+:	21 (80-59) vs. Michigan (1/10/23)	Outrebounded by 20+:	24 (50-26) vs. No. 8 Maryland (2/25/21)	10+Points in 20 Straight Games:	35, Shereka Wright (11/29/01 - 12/29/02)
Lost by 30+:	37 (83-46) at No. 12 Maryland (1/10/21)	Outrebounded by 25+:	28 (28-56) at Notre Dame (12/29/13)	10+Points in 30 Straight Games:	35, Shereka Wright (11/29/01 - 12/29/02)
Scored 90+:	90 vs. Murray State (11/13/22)	TEAM ASSISTS		INDIVIDUAL DOUBLE-DOUBLES	
Scored 90+ (Big Ten):	91 at Penn State (12/20/20)	Had 25:	25 vs. Murray State (11/13/22)	Double-Double:	10 rebs, 10 assts, Jeanae Terry vs. Murray State (11/13/22)
Scored 100+:	100 vs. SIUE (11/17/22)	Had 30:	31 vs. Incarnate Word (12/10/15)	Points-Rebounds:	11-17, Jeanae Terry vs. Illinois (2/17/22)
Scored 100+ (Big Ten):	110 (110-51) at Michigan (3/12/94)	Had Five or Fewer:	5 at Indiana (3/6/21)	Points-Assists:	19-11 Karissa McLaughlin at Wisconsin (12/31/18)
Scored 40 or Fewer:	40 (40-86) vs. Connecticut (11/24/18)	TEAM TURNOVERS		Points-Steals:	27-12, Joy Holmes vs. Minnesota (1/13/89)
Scored 50 or Fewer:	49 (62-49) vs. Michigan (2/11/21)	Committed 10 or Fewer:	8 vs. Minnesota (1/21/23)	Points-Blocks:	12-11, Danielle Campbell vs. Butler (11/17/07)
Scored 50 or Fewer and Won:	48 (48-46) at IUPUI (3/15/18)	Committed 20+:	21 at Penn State (1/7/23)	Freshman:	10-11 ast, Karissa McLaughlin vs. PSU (1/28/18)
Allowed 90+:	100 at Ohio State (2/18/21)	Forced 10 or Fewer:	8 at Ohio State (2/18/21)	Non-Point:	10 reb, 10 ast, Jeanae Terry vs. Murray State (11/13/22)
Allowed 90+ (Big Ten):	100 at Ohio State (2/18/21)	Forced 20+:	26 vs. Wisconsin (1/1/23)	20-10 Game:	21 pts, 12 rebs, Ae'Rianna Harris vs. PSU (1/26/20)
Allowed 100+:	100 at Ohio State (2/18/21)	TEAM CLOSE GAMES		30-10 Game:	30 pts, 10 reb, Stephanie White vs. Washington (3/14/98)
Allowed 50 or Fewer:	50, at Ohio State (12/28/19)	One-Point Games:	L, 76-75 vs. Florida State (11/25/22)	20-20 Game:	29 pts, 20 reb, Joy Holmes at Wisconsin (1/27/91)
Allowed 40 or Fewer:	38 at Ball State (11/7/18)	Two-Point or less Games:	L, 54-52, at Wisconsin (2/13/22)	Consecutive Double-Doubles:	2, Jeanae Terry (11/10-13/22)
TEAM SCORING (HALF)		Three-Point or less Games:	L, 77-74 vs. Maryland (12/8/22)	in Three Straight Games:	4, Fatou Diagne, (1/18-1/31)
Scored 60 in the First Half:	68 vs. Kent State (12/8/90)	Back-to-Back Games Decided by Three Points or Less:	L, 63-65 (OT) at Rutgers (1/16/19); W 56-53 vs. Indiana (1/20/19)	in Five Straight Games:	9, Whitney Bays (12/20/14 - 1/19/15)
Scored 60 in the Second Half:	60 vs. South Alabama (12/27/94)	Last Second Shot to Win:	Jeanae Terry, 2, vs. Georgia Tech (12/1/21)	Two Players with a Double-Double:	11 pts, 12 reb, Fatou Diagne
Scored 15 Points or Less:	15 (1st) vs. No. 18 Indiana (1/14/21)	Lost on a Last Second Shot:	Jeanae Terry, 2, vs. Rutgers (1/3/22)		15 pts, 10 reb, Ae'Rianna Harris, vs. Michigan State (3/5/20)
Scored 20 Points or Less:	17 (2nd) at Wisconsin (2/13/22)		Shyanne Sellers, 3-pt vs. Maryland (12/8/22)	Three Players with a Double-Double:	Ae'Rianna Harris (14 pts, 17 rebs) & Tamara Farquhar (13 pts, 14 rebs), vs. Western Illinois (11/17/20)
Allowed 50+:	50 (2nd) at Maryland (12/8/21)	TEAM SHOOTING		INDIVIDUAL TRIPLE-DOUBLES	
Allowed 15 Points or Less:	15 (1st) at Wisconsin (2/13/22)	Scored 30+:	31 (3rd) vs. Buffalo (12/9/20)	Triple-Double:	10 pts, 11 rebs, 12 assts - Jeanae Terry - vs. Minnesota (1/27/22)
Allowed 20 Points or Less:	19 (1st) vs. SIUE (11/17/22)	Scored 25+:	25 (3rd) vs. Nebraska (1/18/23)	Before that	11 pts, 12 rebs, 10 assts - Jeanae Terry - vs. Miami (12/19/21)
TEAM SCORING (QUARTER)		Scored 10 Points or Less:	8 (4th) vs. Nebraska (1/18/23)	Before that	12 pts, 11 rebs, 11 blks - Danielle Campbell - vs. Butler (11/17/07)
Scored 60 in the First Half:	68 vs. Kent State (12/8/90)	Scored 5 Points or Less:	0 (2nd) vs. Florida State (11/27/21)	Before that	20 pts, 11 rebs, 10 assts - Stephanie White - vs. Indiana (1/22/99)
Scored 60 in the Second Half:	60 vs. South Alabama (12/27/94)	Allowed 30+:	32 (4th) vs. Penn State (2/9/22)	INDIVIDUAL FIELD GOALS	
Scored 15 Points or Less:	15 (1st) vs. No. 18 Indiana (1/14/21)	Allowed 25+:	25 (4th) at Iowa (12/29/22)	Made 13 Field Goals:	13, Lasha Petree vs. Syracuse (11/30/22)
Scored 20 Points or Less:	17 (2nd) at Wisconsin (2/13/22)	Allowed 10 Points or Less:	9 (1st) at Northwestern (1/14/23)	Made 15 Field Goals:	15, Shereka Wright at Michigan (2/17/02)
Allowed 50+:	50 (2nd) at Maryland (12/8/21)	Allowed 5 Points or Less:	2 (1st) at Wisconsin (2/13/22)	Attempted 20 Field Goals:	21 Lasha Petree vs. Syracuse (11/30/22)
Allowed 15 Points or Less:	15 (1st) at Wisconsin (2/13/22)	TEAM OVERTIME		Attempted 25 Field Goals:	25, KK Houser vs. Penn State (1/30/14)
Allowed 20 Points or Less:	19 (1st) vs. SIUE (11/17/22)	Overtime Game:	W, 76-71 vs. Michigan State (12/4/22)	Attempted 30 Field Goals:	33, MaChelle Joseph at Wisconsin (2/21/92)
TEAM SHOOTING		Double Overtime Game:	L, 73-82 vs. South Carolina (12/16/18)	INDIVIDUAL 3-POINTERS	
Shot 65% or Higher:	.735 (36-59) vs. Penn State (1/28/18)	Triple Overtime Game:	W, 82-75 vs. Nebraska (2/2/12)	Made Six 3-Pointers:	6, Abbey Ellis at Illinois (1/20/22)
Shot 60% or Higher:	.607 (34-56) vs. Harvard (11/24/22)	Consecutive Overtime Games:	W, 90-88 at Minnesota (1/22/15); L, 71-79 vs. Ohio State (1/25/15)	Made Seven 3-Pointers:	7, Cassidy Hardin vs. Denver (12/12/21)
Shot 55% or Higher:	.553 (26-47) vs. Maryland (12/8/22)	TEAM COMEBACKS		Made Eight 3-Pointers:	9, Karissa McLaughlin vs. NU (2/17/19)
Shot 50% or Higher:	.511 (24-47) vs. Illinois State (12/11/22)	Came Back from 10+ Down to Win:	W, 66-61 vs. Florida State (11/27/21)	Attempted 12 3-Pointers:	12, Cassidy Hardin at Nebraska (1/30/22)
Shot 30% or Lower:	.296 (21-71) vs. Ohio State (12/5/21)	Came Back from 15+ Down to Win:	W, 81-79 (OT) at Michigan (2/1/18; down 72-56 w/ 6:48 left in the 4th)	Attempted 13 3-Pointers:	14, Madison Layden vs. Ohio State (12/5/21)
Shot 25% or Lower:	.241 (13-54) at No. 12 Maryland (1/10/20)	Beat a Ranked Team:	#17 Florida State, 66-61 (11/27/21)	Made a 3-Pointer in 20 Straight Games:	24, Madison Layden (12/9/20-11/17/21)
Shot 35% or Lower and Won:	.308 (20-65) vs. Wisconsin (1/21/21)	Beat Back-to-Back Ranked Team:	#21 Rutgers, 47-33 (1/10/17)		23, Cassidy Hardin (3/10/21-2/4/22)
Opponent Shot 55% or Higher:	.582 (39-67) at Ohio State (2/18/21)	Beat a Ranked Team on the Road:	#18 Iowa, 76-70 (1/13/18)	INDIVIDUAL FREE THROWS	
Opponent Shot 50% or Higher:	.500 (28-56) vs. Michigan (1/10/23)	Beat a Top-10 Ranked Team:	#10 Maryland, 75-65 (2/15/18)	Made 13 FTs:	14, Courtney Moses at Northwestern (1/26/12)
Opponent Shot 30% or Lower:	.275 (19-69) vs. Minnesota (1/21/23)	Beat a Top-10 Ranked Team on the Road:	#10 Maryland, 75-65 (2/15/18)	Made 15 FTs:	15, Ukari Figgs vs. Washington (3/14/98)
Opponent Shot 25% or Lower:	.242 (16-66) at Rutgers (2/19/17)	Beat a Top-5 Ranked Team:	#4 Texas A&M, 60-51 (12/4/11)	Attempted 16 FTs:	18, Brittany Rayburn vs. Gardner-Webb (12/21/09)
TEAM 3-POINT SHOOTING		Beat a Top-5 Ranked Team on the Road:	N/A	Attempted 18 FTs:	18, Brittany Rayburn vs. Gardner-Webb (12/21/09)
Made 10+:	10 vs. Minnesota (1/21/23)	INDIVIDUAL SCORING		Attempted 20 FTs:	20, Shereka Wright at Northwestern (2/15/04)
Made 12+:	15 at Illinois (1/20/22)	Scored 20 Points:	20, Abbey Ellis vs. Nebraska (1/18/23)	INDIVIDUAL STEALS	
Made 15+:	15 vs. Central Michigan (12/28/13), at Illinois (1/20/22)	Scored 30 Points:	31, Lasha Petree vs. Syracuse (11/30/22)	Grabbed Five Steals:	5, Jeanae Terry vs. Wisconsin (1/1/23)
Made 0:	0 vs. Valparaiso (12/6/20)	Scored 35 Points:	38, Brittany Rayburn at Minnesota (1/12/12)	Grabbed Six Steals:	6, Madison Layden, at Rutgers (2/20/22)
Attempted 25+:	31 at Iowa (12/29/22)	Scored 40 Points:	41, Katie Gearlds at Wisconsin (2/18/07)	Grabbed Seven Steals:	8, FahKara Malone vs. Indiana (3/7/08)
Attempted 30+:	30 vs. Minnesota (1/21/23)	Scored 20 Points in Back-to-Back Games:	Abbey Ellis	Grabbed Eight Steals:	8, FahKara Malone vs. Indiana (3/7/08)
Attempted Five or Less:	4 vs Boston College (12/3/15)	Scored 20 Points in Three Straight Games:	24 at Northwestern (1/14/23) 20 vs. Nebraska (1/18/23)		
Shot 50%+:	.652 (15-23) at Illinois (1/20/22)	TEAM FREE THROW SHOOTING			
Shot 60%+:	.652 (15-23) at Illinois (1/20/22)	Made 25+:	25 vs. SIUE (11/17/22)		
		Made 30+:	32 vs. DePaul (11/21/10)		
		Made Five or Less:	5 vs. Minnesota (1/21/23)		
		Made All Attempted:	7-7 at No. 5 Indiana (2/6/22)		
		Attempted 30+:	36 vs. SIUE (11/17/22)		
		Attempted 40+:	41 vs. Minnesota (1/18/04)		
		Attempted 10 or Less:	10 vs. Michigan (1/10/23)		
		Attempted Five or Less:	3 at Northwestern (2/24/22)		



## THE LAST TIME (CONTINUED)

### INDIVIDUAL REBOUNDS

Grabbed 15 Rebounds: 17, Jeanae Terry vs. Illinois (2/17/22)  
 Grabbed 16 Rebounds: 17, Jeanae Terry vs. Illinois (2/17/22)  
 Grabbed 17 Rebounds: 17, Jeanae Terry vs. Illinois (2/17/22)  
 Grabbed 18 Rebounds: 18, Fatou Diagne vs. Penn State (1/31/21)  
 Grabbed 19 Rebounds: 19, Whitney Bays vs. Ohio State (1/25/15)  
 Grabbed 20 Rebounds: 20, Joy Holmes at Wisconsin (1/27/91)  
 Grabbed Eight Off. Rebounds: 9, Jeanae Terry at Wisconsin (2/13/22)  
 Grabbed 12 Defensive Rebounds: 14, Ae'Rianna Harris  
 vs. Western Illinois (11/17/19)

### 10+ Rebounds in Three Straight Games:

3, Ae'Rianna Harris (11/17/19-11/29/19)

Two Players with 10+ Rebounds in a Game: Tamara Farquhar (14) &  
 Ae'Rianna Harris (17) vs. Western Illinois (11/17/19)

### Three Players 10+ Rebounds in a Game:

Bridget Perry (11), Whitney Bays (11) &  
 Liza Clemons (13) vs. Northwestern (2/11/15)

### INDIVIDUAL ASSISTS

Dished Out 10 Assists: 10, Jeanae Terry at Northwestern (1/14/23)  
 Dished Out 11 Assists: 12, Jeanae Terry vs. Indiana State (11/20/22)  
 Dished Out 12 Assists: 12, Jeanae Terry vs. Indiana State (11/20/22)  
 Dished Out 5+ Assists in Five Straight Games:  
 6, Jeanae Terry (1/20/22 - 2/6/22)

### Dished Out 10+ Assists in Two Straight Games:

Jeanae Terry vs. Marshall (11/10/22) & Murray State (11/14/22)

### INDIVIDUAL MINUTES

Played a Complete Game: Madison Layden vs. Michigan State (3/3/22)  
 Played at Least 40 Minutes: Jeanae Terry vs. Michigan State (12/4/22)  
 Played Every Minute of an Overtime Game: Dominique Oden (45)  
 Karissa McLaughlin (45) at Rutgers (1/16/19)  
 Freshman Played 40 Minutes:  
 Madison Layden (40) vs. Rutgers (2/14/21)  
 Freshman Played a Complete Game:  
 Madison Layden (40) vs. Rutgers (2/14/21)  
 Played Consecutive Complete Games:  
 Kayana Traylor, 2 vs. Michigan (2/11/21)

### INDIVIDUAL FOULS

Technical Foul - Player: Tamara Farquhar, vs. Northwestern (12/17/20)  
 Technical Foul - Coach: Katie Gearlds vs. SIUE (11/17/22)  
 Fouled Out: Lasha Petree vs. Marshall (11/10/22)  
 Two Players Fouled Out:  
 Ra Shaya Kyle, Fatou Diagne vs. Michigan (2/11/21)  
 Three Players Fouled Out: Tamara Farquhar, Ae'Rianna Harris  
 & Dominique Oden vs. South Carolina (12/16/18 - 2 OT)

### INDIVIDUAL BLOCKED SHOTS

Posted Five Blocks: 7, Ae'Rianna Harris vs. Michigan State (3/5/20)  
 Posted Six Blocks: 7, Ae'Rianna Harris vs. Michigan State (3/5/20)  
 Posted Seven Blocks: 7, Ae'Rianna Harris vs. Michigan State (3/5/20)  
 Posted Eight Blocks: 9, Ae'Rianna Harris at South Carolina (12/15/19)  
 Blocked 5+ Shots in Back-to-Back Games: Ae'Rianna Harris  
 vs. UT Martin, 5 (12/18/17), Saint Mary's, 5 (12/20/17)  
 & at Rutgers, 7 (12/28/17)

## CAREER STAT TRACKER (SEASON/CAREER) \*TOTAL INCLUDES PREVIOUS SCHOOL

Name	Double-Doubles	10+ Points	20+ Points	13FG	2+ 3FGs	10+ Rebounds	5+ Assists	3+ Blocks	3+ Steals	Complete Game
2 - Holzer	/	/	/	/	/	/	/	/	/	/
3 - Smith	/	8 (5-3) / 13 (8-5)	/	9 (6-3) / 19 (10-9)	3 (2-1) / 7 (3-4)	/	/	/	1 (1-0) / 4 (4-0)	/
5 - Hardin	/	7 (4-3) / 25 (17-8)	/	17 (11-6) / 92 (53-39)	10 (6-4) / 52 (34-18)	/	/	/	/	/
10 - Terry	2 (2-0) / 12* (5-0)	2 (2-0) / 29* (8-2)	/ 3*	1 (0-1) / 24* (2-2)	/	5 (4-1) / 18* (7-4)	16 (12-4) / 51* (23-13)	/ 1*	5 (3-2) / 19* (7-3)	/
11 - Petree	/	15 (11-4) / 92* (11-4)	5 (4-1) / 34* (4-1)	16 (12-4) / 105* (12-4)	9 (7-2) / 64* (7-2)	/	/	1 (1-0) / 21* (1-0)	3 (2-1) / 26* (2-1)	/
14 - Learn	/	2 (2-0) / 4 (4-0)	/	/	/	/	/	/	/	/
23 - Ellis	/ 2*	9 (6-3) / 62* (16-14)	3 (2-1) / 20* (3-1)	10 (7-3) / 64* (16-12)	7 (5-2) / 39* (11-5)	/	/	/	/	/
30 - Potts	/	/	/	/	/	/	/	/	/	/
31 - Stoddard	/	/	/	/	/	/	/	/	/	/
33 - Layden	/	5 (3-2) / 34 (20-14)	/	12 (8-4) / 58 (29-29)	8 (5-3) / 39 (21-18)	/	4 (3-1) / 12 (6-6)	/	2 (2-0) / 17 (9-8)	/
34 - Harper	/	11 (6-5) / 76* (6-5)	1 (0-1) / 20* (0-1)	10 (5-5) / 19* (5-5)	4 (1-3) / 21* (1-3)	/	/	2 (1-1) / 15* (1-1)	/	/
35 - Woltman	/	10 (1-0) / 2 (2-0)	/	/	/	1 (1-0) / 3 (3-0)	/	/	/	/

AINHOA  
HOLZER

2

**Height** - 5-9 | **Position** - Guard | **Year** - Freshman | **Major** - Physics  
**Hometown** - Martigny, Switzerland  
**Instagram** - ainhoaholzer | **Twitter** - ainhoaholzer



	Season High	Career High	(*prior school)
Points	-	-	-
Rebounds	-	-	-
Assists	-	-	-
Steals	-	-	-
Blocks	-	-	-
Field Goals	-	-	-
3-Pointers	-	-	-
Free Throws	-	-	-
Minutes	-	-	-

## HOLZER QUICK HITS

- Will miss the entire season due to a knee injury sustained in the penultimate game of the 2022 Swiss Basketball League regular season
- Named Sixth Woman and Most Improved Player of the 2021-22 Swiss Basketball League season
- Played four seasons in the Swiss Basketball League
- Called up for the U18 European Championships in 2019 and the U20 Swiss National Team in 2021 for the European Challengers and 2023 European Championships

JAYLA  
SMITH

3

**Height** - 6-0 | **Position** - Guard | **Year** - Sophomore | **Major** - Business  
**Hometown** - Indianapolis, Ind. | **High School** - Lawrence North  
**Instagram** - s.jaylasmith | **Twitter** - \_JaylaSmith | **TikTok** - s.jaylasmith



	Season High	Career High
Points	16 vs. Marshall, 11/10/22	16, 2x last vs. Marshall, 11/10/22
Rebounds	7 vs. Nebraska, 1/18/23	7, 3x last vs. Nebraska, 1/18/23
Assists	4, 2x last vs. Nebraska, 1/18/23	4, 2x last vs. Nebraska, 1/18/23
Steals	4, vs. SIUE, 11/17/22	4 2x last, vs. SIUE, 11/17/22
Blocks	1 7x last vs. Minnesota, 1/21/23	3, at Indiana 2/6/22
Field Goals	6 4x last vs. Minnesota, 1/21/23	6, 4x last vs. Michigan, 1/10/23
3-Pointers	3 vs. Marshall, 11/10/22	4, at Nebraska, 1/30/22
Free Throws	3, vs. SIUE, 11/17/22	3 2x last, vs. SIUE, 11/17/22
Minutes	30 at Penn State, 1/7/23	30 at Penn State, 1/7/23

## SMITH QUICK HITS

- Joined the starting lineup against Wisconsin
- Primary substitute as a freshman with one start
- Knocked down a quartet of 3-pointers against Nebraska last season to set career high with 16 points
- 2021 Indiana Miss Basketball, 10th in program history
- Won the 2020 Indiana 3A State Championship, over Madison Layden's Northwestern, hitting 8 3-pointers
- No. 49 player in the nation and No. 1 in Indiana by MaxPreps
- 3-time First Team All-State selection

SEASON	GP-GS	MIN/AVG	FG-FGA	FG%	3FG-FGA	3FG%	FT-FTA	FT%	OFF	DEF	TOT	AVG	PF-FO	AST	TO	BLK	STL	PTS	AVG
2021-22	30-1	473/15.8	54-140	.386	16-55	.291	16-26	.615	13	39	52	1.7	25-0	21	29	11	22	140	4.7
2022-23	19-3	371/19.5	67-143	.469	13-45	.289	18-35	.514	16	27	43	2.3	22-0	26	28	7	16	165	8.7
TOTAL	49-4	844/17.2	121-283	.428	29-100	.290	34-61	.557	29	66	95	1.9	47-0	47	57	18	38	305	6.2

CASSIDY  
HARDIN

5

**Height** - 5-10 | **Position** - Guard | **Year** - Fifth Year | **Major** - Honors Biochemistry (May 22)  
**Hometown** - Center Grove, Ind. | **High School** - Center Grove  
**Instagram** - cass\_hardin | **TikTok** - casshardin5



	Season High	Career High
Points	18, vs. Indiana St., 11/20/22	25 vs. Denver, 12/12/21
Rebounds	6, vs. Maryland, 12/8/22	8 vs. Minnesota, 1/27/22
Assists	3, vs. Maryland, 12/8/22	5, 3x last vs. North Alabama, 12/21/21
Steals	2, 3x last at Northwestern, 1/14/23	3 2x last vs. Denver, 12/12/21
Blocks	-	1, 10x last at Indiana, 2/6/22
Field Goals	5, vs. Indiana St., 11/20/22	7 vs. Denver, 12/12/21
3-Pointers	5, vs. Indiana St., 11/20/22	7 vs. Denver, 12/12/21
Free Throws	3, 2x last vs. Michigan, 1/10/23	4 vs. Denver, 12/12/21
Minutes	39 vs. Marshall, 11/10/22	43 vs. Indiana, 1/16/22

## HARDIN QUICK HITS

- Sixth in career 3-pointers at Purdue
- Deferred starting medical school to return for fifth and final season in 2022-23
- One of three players in program history to play in parts of five seasons
- 192 of 223 career field goals made are 3-pointers
- Holds the third longest 3-point streak in history at 23 games
- Has indoor court at home
- Three-time academic All-Big Ten
- Indiana Doubles Tennis champion in 2017

SEASON	GP-GS	MIN/AVG	FG-FGA	FG%	3FG-FGA	3FG%	FT-FTA	FT%	OFF	DEF	TOT	AVG	PF-FO	AST	TO	BLK	STL	PTS	AVG
2018-19	32-3	421/13.2	25-109	.229	24-97	.247	8-10	.800	7	26	33	1.0	25-0	35	20	2	5	82	2.6
2019-20	29-8	494/17.0	43-121	.355	37-105	.352	2-2	1.000	5	45	50	1.7	27-0	29	28	2	15	125	4.3
2020-21	19-0	231/12.2	18-62	.290	15-54	.278	3-4	.750	6	17	23	1.2	21-0	8	14	0	4	54	2.8
2021-22	32-31	993/31.0	91-257	.354	78-233	.335	18-24	.750	6	75	81	2.5	74-2	50	36	7	23	278	8.7
2022-23	19-16	473/24.9	46-125	.368	38-110	.345	13-17	.765	2	45	47	2.5	27-0	25	16	0	14	143	7.5
TOTAL	131-58	2612/19.9	223-674	.331	192-599	.321	44-57	.772	26	208	234	1.8	174-2	147	114	11	61	682	5.2

JEANAE  
TERRY

10

**Height** - 5-11 | **Position** - Guard | **Year** - Senior | **Major** - Sociology  
**Hometown** - Detroit, Mich. | **High School** - Wayne Memorial | **Previous** - Illinois  
**Instagram** - saucy\_\_nae\_\_ | **Twitter** - basquetbol\_nae | **TikTok** - saucytiktok10



	Season High	Career High	(*prior school)
Points	17, vs. SIUE, 11/17/22	28, at Wisconsin, 1/31/21*	
Rebounds	13 vs. Harvard, 11/24/22	17, 2x last vs. Illinois, 2/17/22	
Assists	12, vs. Indiana St., 11/20/22	12 3x last, vs. Indiana St., 11/20/22	
Steals	5, vs. Wisconsin, 1/1/23	5, 5x last, vs. Wisconsin, 1/1/23	
Blocks	2, at Michigan State, 12/4/22	4, vs. Chicago State, 11/5/19*	
Field Goals	6, vs. SIUE, 11/17/22	9, vs. Penn State, 1/28/21*	
3-Pointers	1 vs. Nebraska, 1/18/23	3, 3x last vs. Ohio State, 1/7/21*	
Free Throws	5, 3x last, vs. Maryland, 12/8/22	11, at Wisconsin, 1/31/21*	
Minutes	41, at Michigan State, 12/4/22	41, at Michigan State, 12/4/22	

## TERRY QUICK HITS

- 17th in program history in career assists at Purdue
- Joined 500-assist club with a pair of dimes vs. Nebraska
- First Boilermaker ever with a non-point double-double
- Earned All-Big Ten honorable mention last year
- Only Boilermaker (men or women) in history to record multiple triple-doubles in a season and a career
- Went 2-for-3 on game-winning shots in 2021-22
- Joined Stephanie White as the only Boilermaker to ever record over 150 assists and 200 rebounds in a season
- Played two seasons at Illinois
- Shot 34.1% from the field over first two years
- Two-time Class A All-State honoree

SEASON	GP-GS	MIN/AVG	FG-FGA	FG%	3FG-FGA	3FG%	FT-FTA	FT%	OFF	DEF	TOT	AVG	PF-FO	AST	TO	BLK	STL	PTS	AVG
2019-20	30-11	693/23.1	65-225	.289	15-57	.263	40-66	.606	34	79	113	3.8	55-1	91	50	17	35	185	6.2
2020-21	23-23	690/30.0	89-226	.394	15-58	.259	54-74	.730	48	131	179	7.8	48-1	101	96	6	41	247	10.7
2021-22	32-32	949/29.6	88-215	.409	3-21	.143	51-74	.689	66	157	223	7.0	80-2	183	100	14	41	230	7.2
2022-23	19-19	572/30.1	46-103	.447	1-8	.125	35-57	.614	36	112	148	7.8	39-0	133	57	8	38	128	6.7
PURDUE	51-51	1521/29.8	134-318	.421	4-29	.138	86-131	.656	102	269	371	7.3	119-2	316	157	22	79	358	7.0
TOTAL	104-85	2904/27.9	288-769	.375	34-144	.236	180-271	.664	184	479	663	6.4	222-4	508	303	45	155	790	7.6

# 2022-23 PURDUE WOMEN'S BASKETBALL GAME NOTES

## LASHA PETREE

11

**Height** - 6-0 | **Position** - Guard | **Year** - Fifth Year | **Major** - Master's Management  
**Hometown** - Detroit, Mich. | **High School** - Arbor Prep | **Previous** - Bradley & Rutgers  
**Instagram** - lashapetree | **Twitter** - la3ha | **TikTok** - la3ha



	Season High	Career High	(*prior school)
Points	31 vs. Syracuse, 11/30/22	36, vs Indiana St. 01/05/20*	
Rebounds	8, at Michigan State, 12/4/22	12 at Evansville 01/11/19*	
Assists	3, 4x last vs. Minnesota, 1/21/23	6 at Drake 02/20/20*	
Steals	3, 3x last at Penn State, 1/7/23	6 vs Chicago St. 12/28/18*	
Blocks	3, at Michigan State, 12/4/22	6, 2x last, vs Loyola Chicago 01/23/21*	
Field Goals	13 vs. Syracuse, 11/30/22	13 2x last vs. Syracuse, 11/30/22	
3-Pointers	3 5x last vs. Minnesota, 1/21/23	6, vs North Dakota St. 12/05/19*	
Free Throws	7 at Iowa, 12/29/22	10, 2x last vs Texas 03/22/21*	
Minutes	34, at Michigan State, 12/4/22	40, 4x last vs. SIU, 2/27/20*	

## PETREE QUICK HITS

- Made 100th career start against Harvard
- Ranks 14th in active Division I scoring and in the top 50 among 3-point leaders
- Transferred to Purdue ahead of the 2022-23 season, utilizing her extra year of eligibility from the NCAA.
- Spent three seasons at Bradley and one at Rutgers
- Career honors include - Preseason Naismith Award Watch List (2020-21), MVC Preseason Player of the Year (2020-21), First-Team All-MVC (2020-21 & 2019-20), MVC Freshman of the Year (2018-19), MVC Sixth Player of the Year (2018-19)
- Was a finalist for Michigan Miss Basketball as a senior

## AVA LEARN

14

**Height** - 6-1 | **Position** - Guard/Forward | **Year** - Sophomore | **Major** - Hospitality, Tourism  
**Hometown** - Hyde Park, N.Y. | **High School** - Our Lady of Lourdes  
**Instagram** - ava.learn | **Twitter** - AvaLearn | **TikTok** - ava.learn



	Season High	Career High
Points	12, 2x last, vs. Wisconsin, 1/1/23	13, at Rutgers, 2/20/22
Rebounds	4, 3x last, vs. Wisconsin, 1/1/23	4, 3x last, vs. Wisconsin, 1/1/23
Assists	3 vs. Michigan, 1/10/23	3 vs. Michigan, 1/10/23
Steals	1, 8x last at Northwestern, 1/14/23	2 vs. Wisconsin, 2/27/22
Blocks	2 2x last at Penn State, 1/7/23	3, at Northwestern, 2/24/22
Field Goals	5, vs. Wisconsin, 1/1/23	6, 2x last at Rutgers, 2/20/22
3-Pointers	-	-
Free Throws	8 vs. Oklahoma State, 11/26/22	8 vs. Oklahoma State, 11/26/22
Minutes	23 at Penn State, 1/7/23	23 3x last at Penn State, 1/7/23

## LEARN QUICK HITS

- Made first career start at Northwestern
- Pure bundle of energy on and off the court
- Saw action off the bench in 22 games as a freshman
- Totaled 16.4 minutes per game over the final 16 games of the season, including a season-high 13 points at Rutgers
- No. 153 player in the nation and No. 41 guard by Girls Basketball Prep
- Four-time Poughkeepsie Journal All-Star

## ABBEY ELLIS

23

**Height** - 5-6 | **Position** - Guard | **Year** - Senior | **Major** - Early Childhood Education  
**Hometown** - Melbourne, Australia | **High School** - Our Lady of Mercy | **Previous** - Cal Poly  
**Instagram** - \_abbeyellis | **Twitter** - \_abbeyellis | **TikTok** - abbeye\_22



	Season High	Career High	(*prior school)
Points	29, vs. SIUE, 11/17/22	39, at San Diego St., 12/21/20*	
Rebounds	7 vs. Illinois State, 12/11/22	10, vs. Long Beach St., 3/10/21*	
Assists	4 vs. Michigan, 1/10/23	11, vs. Western Michigan, 11/14/21	
Steals	2, 3x last at Iowa, 12/29/22	8, vs. Santa Clara, 12/15/20*	
Blocks	1 2x last vs. Nebraska, 1/18/23	1, 13x last vs. Nebraska, 1/18/23	
Field Goals	9, vs. SIUE, 11/17/22	14, vs. UC Riverside, 1/23/20*	
3-Pointers	3, vs. SIUE, 11/17/22	8, at UC San Diego, 1/1/21*	
Free Throws	8, vs. SIUE, 11/17/22	10, at UC San Diego, 1/2/21*	
Minutes	39 vs. Nebraska, 1/18/23	44 vs. Indiana, 1/16/22	

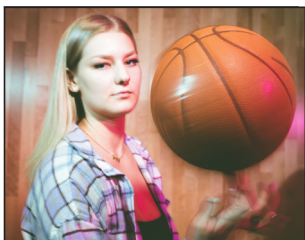
## ELLIS QUICK HITS

- 23rd in the nation and fifth in the Big Ten in free throw%
- Earned All-Big Ten honorable mention last year
- 85.4% free throw clip last year was the 10th best in a single season in Purdue history
- Crossed the 1,000-point plateau in 2021-22 with a 19-point performance against Indiana at Mackey Arena.
- Developed a sizable following on TikTok @abbeye\_22 with videos shared by Barstool Sports, Slam and more.
- Mother Libbie sends several ribbons in different colors for her to wear in games
- Father Martin was an Australian Rules Football official who refereed 244 matches in 13 years, including the 2001 Grand Final.

## ADDISON POTTS

30

**Height** - 6-0 | **Position** - Guard | **Year** - Freshman | **Major** - Management  
**Hometown** - Fort Myers, Fla. | **High School** - South Fort Myers  
**Instagram** - addison\_potts | **Twitter** - addison\_potts3 | **TikTok** - aapp\_33



	Season High	Career High	(*prior school)
Points	2, vs. SIUE, 11/17/22	2, vs. SIUE, 11/17/22	
Rebounds	-	-	
Assists	2, Murray State, 11/13/22	2, Murray State, 11/13/22	
Steals	-	-	
Blocks	-	-	
Field Goals	-	-	
3-Pointers	-	-	
Free Throws	-	-	
Minutes	6, vs. SIUE, 11/17/22	6, vs. SIUE, 11/17/22	

## POTTS QUICK HITS

- 2022 Prep Girls Hoops Florida Miss Basketball
- 3-time First Team News-Press SWFL All-Area and Player of the Year finalist
- Won six varsity letters, starting high school career in seventh grade
- Totaled 2,098 points during prep career

SEASON	GP-GS	MIN/AVG	FG-FGA	FG%	3FG-FGA	3FG%	FT-FTA	FT%	OFF	DEF	TOT	AVG	PF-FO	AST	TO	BLK	STL	PTS	AVG
2022-23	4-0	18/4.4	1-3	.333	0-0	.000	0-1	.000	0	0	0	0.0	3-0	2	0	0	0	2	0.5



LILLY  
STODDARD 31

**Height** - 6-4 | **Position** - Forward | **Year** - Freshman | **Major** - Biomedical Sciences  
**Hometown** - Crown Point, Ind. | **High School** - Crown Point  
**Instagram** - lilly.stoddard | **Twitter** - lillystoddard00 | **TikTok** - lilly.stoddard

	Season High	Career High	(*prior school)
Points	2 vs. Harvard, 11/24/22	2 vs. Harvard, 11/24/22	
Rebounds	1, vs. Indiana St., 11/20/22	1, vs. Indiana St., 11/20/22	
Assists	-		
Steals	-		
Blocks	1, Murray State, 11/13/22	1, Murray State, 11/13/22	
Field Goals	1 vs. Harvard, 11/24/22	1 vs. Harvard, 11/24/22	
3-Pointers	-		
Free Throws	-		
Minutes	5 vs. Oklahoma State, 11/26/22	5 vs. Oklahoma State, 11/26/22	

SEASON	GP-GS	MIN/AVG	FG-FGA	FG%	3FG-FGA	3FG%	FT-FTA	FT%	OFF	DEF	TOT	AVG	PF-FO	AST	TO	BLK	STL	PTS	AVG
2022-23	6-0	16/2.7	1-4	.250	0-0	.000	0-0	.000	1	0	1	0.2	4-0	0	1	1	0	2	0.3

## STODDARD QUICK HITS

- No. 87 player in the nation by ESPNW
- Won 2021 IHSA 4A State Championship
- Finished with a 103-7 career record in high school
- Four-time conference and sectional champion
- Older Abby Stoddard plays at Butler

MADISON  
LAYDEN 33

**Height** - 6-1 | **Position** - Guard | **Year** - Junior | **Major** - Selling & Sales Management  
**Hometown** - Kokomo, Ind. | **High School** - Northwestern  
**Instagram** - madison\_layden | **Twitter** - madison\_layden | **TikTok** - madison\_layden

	Season High	Career High
Points	16 vs. Michigan, 1/10/23	20, 2x last vs. Penn State, 2/9/22
Rebounds	8, at Michigan State, 12/4/22	8 4x last, at Michigan State, 12/4/22
Assists	6, Murray State, 11/13/22	7, vs. Michigan State - 1/3/21
Steals	4, vs. Wisconsin, 1/1/23	6, at Rutgers, 2/20/22
Blocks	2, vs. Maryland, 12/8/22	2 4x last, vs. Maryland, 12/8/22
Field Goals	6, Murray State, 11/13/22	8, 2x last vs. Penn State, 2/9/22
3-Pointers	5, vs. Florida State, 11/25/22	6, at Iowa - 1/18/21
Free Throws	5, vs. Indiana St., 11/20/22	6, vs. Dayton, 11/20/21
Minutes	38, at Michigan State, 12/4/22	44 vs. Indiana, 1/16/22

SEASON	GP-GS	MIN/AVG	FG-FGA	FG%	3FG-FGA	3FG%	FT-FTA	FT%	OFF	DEF	TOT	AVG	PF-FO	AST	TO	BLK	STL	PTS	AVG
2020-21	23-21	729/31.7	70-163	.429	45-111	.405	15-20	.750	12	61	73	3.2	43-0	69	44	5	48	200	8.7
2021-22	29-28	986/34.0	117-337	.347	63-190	.332	40-47	.851	24	110	134	4.6	71-1	80	55	15	49	337	11.6
2022-23	17-13	513/30.2	38-110	.345	26-82	.317	15-17	.882	1	67	68	4.0	45-0	58	30	5	20	117	6.9
TOTAL	69-62	2228/32.3	225-610	.369	134-383	.350	70-84	.833	37	238	275	4.0	159-1	207	129	25	117	654	9.5

## LAYDEN QUICK HITS

- Big Ten All-Freshman (2021), honorable mention (2022)
- One of six players to hit 45 3-pointers, dish out 65 assists and record 45 steals in each of the last two seasons (2020-21, 2021-22)
- Invited to the USA Basketball U19 World Cup Trials
- Tied freshman record with 7 3pts in a game at Iowa
- 2020 MaxPreps All-American, Indiana Gatorade Player of the Year and runner-up
- First in IHSA history to lead three Final Fours in scoring
- Ranked 13th in IHSA in career scoring and one of 46 2,000-point scorers in state history

CAITLYN  
HARPER 34

**Height** - 6-2 | **Position** - Forward | **Year** - R-Senior | **Major** - Master's Management  
**Hometown** - Hartland, Wisc. | **High School** - Arrowhead | **Previous** - Cal Baptist  
**Instagram** - caitlynharper32 | **Twitter** - C\_harp32 | **TikTok** - caitlynharper32

	Season High	Career High	(*prior school)
Points	20 at Penn State, 1/7/23	30, at Utah Valley, 1/15/22*	
Rebounds	9 at Penn State, 1/7/23	14, 3x last, vs. Chicago State*	
Assists	3 3x last, vs. Wisconsin, 1/1/23	5, at UTRGV, 2/13/21*	
Steals	2, 4x last at Northwestern, 1/14/23	5, at Sam Houston State, 1/27/22*	
Blocks	4 2x last vs. Michigan, 1/10/23	8, at Chicago State, 3/2/22*	
Field Goals	9 at Penn State, 1/7/23	12, vs. Utah Valley, 2/26/22	
3-Pointers	2 3x last vs. Michigan, 1/10/23	4, vs. Rice, 3/22/21*	
Free Throws	8 vs. Nebraska, 1/18/23	10, vs. Sam Houston State, 3/10/22*	
Minutes	36 at Penn State, 1/7/23	41, at Chicago State, 3/2/22*	

SEASON	GP-GS	MIN/AVG	FG-FGA	FG%	3FG-FGA	3FG%	FT-FTA	FT%	OFF	DEF	TOT	AVG	PF-FO	AST	TO	BLK	STL	PTS	AVG
2018-19	29-3	470/16.2	100-203	.493	11-52	.212	40-58	.690	36	84	120	4.1	49-0	23	38	21	11	251	8.7
2019-20	5-5	121/24.3	32-56	.571	1-2	.500	16-18	.889	13	32	45	9.0	17-0	7	10	10	2	81	16.2
2020-21	27-10	642/23.8	149-281	.530	27-70	.386	60-76	.789	62	140	202	7.5	67-0	35	50	34	31	385	14.3
2021-22	32-32	964/30.1	223-421	.530	29-95	.305	94-127	.740	36	153	189	5.9	68-0	40	58	51	41	569	17.8
2022-23	19-19	458/24.1	87-150	.580	13-31	.419	24-34	.706	22	51	73	3.8	42-0	11	34	14	12	211	11.1
TOTAL	112-69	2654/23.7	591-1111	.532	81-250	.324	234-313	.748	169	460	629	5.6	243-0	116	190	130	97	1497	13.4

## HARPER QUICK HITS

- Joined Purdue in the spring of 2022 with two years of eligibility remaining
- 2022 WAC Player of the Year and CoSIDA All-American
- Led the WAC in scoring with 17.7 points per game
- In 2021, secured All-WAC Second Team, WAC Tournament MVP and WNIT All-Region awards
- Picked up All-Wisconsin honors consecutive years, with a first-team nod in 2018
- Younger sister Alaina plays at Grand Canyon

RICKIE  
WOLTMAN 35

**Height** - 6-4 | **Position** - Forward | **Year** - Senior | **Major** - Selling & Sales Management  
**Hometown** - St. Louis, Mo. | **High School** - Incarnate Word  
**Instagram** - slick\_rick35 | **Twitter** - slick\_rick\_35 | **TikTok** - rickiew

	Season High	Career High
Points	10 vs. Minnesota, 1/21/23	18 vs. Penn State, 2/9/22
Rebounds	10, at Michigan State, 12/4/22	11, 2x last vs. Penn State, 2/9/22
Assists	1, 3x last vs. Minnesota, 1/21/23	3 at Rutgers, 2/20/22
Steals	1 3x last, at Michigan State, 12/4/22	2 2x last at Indiana, 2/6/22
Blocks	2 vs. Syracuse, 11/30/22	4 at Illinois State, 11/17/21
Field Goals	3, 2x last, vs. Wisconsin, 1/1/23	7 vs. North Alabama, 12/21/21
3-Pointers	-	-
Free Throws	4, vs. Indiana St., 11/20/22	4, vs. Indiana St., 11/20/22
Minutes	26, at Michigan State, 12/4/22	33, vs. West Virginia, 11/25/21

SEASON	GP-GS	MIN/AVG	FG-FGA	FG%	3FG-FGA	3FG%	FT-FTA	FT%	OFF	DEF	TOT	AVG	PF-FO	AST	TO	BLK	STL	PTS	AVG
2019-20	19-0	91/4.8	8-14	.571	0-0	.000	1-3	.333	9	17	26	1.4	19-0	0	11	6	0	17	0.9
2020-21	13-0	65/5.0	5-11	.455	0-0	.000	3-3	1.000	2	9	11	0.8	10-0	2	3	2	2	13	1.0
2021-22	32-22	648/20.3	96-178	.539	0-0	.000	32-52	.615	47	118	165	5.2	80-1	13	41	34	10	224	7.0
2022-23	19-0	251/13.2	30-46	.652	0-0	.000	14-19	.737	18	49	67	3.5	28-0	4	16	6	3	74	3.9
TOTAL	83-22	1056/12.7	139-249	.558	0-0	.000	50-77	.649	76	193	269	3.2	137-1	19	71	48	15	328	4.0

## WOLTMAN QUICK HITS

- Resurgent junior season, started last 22 games of the year
- Played 20.3 minutes per game last year, following just 4.9 in her first two campaigns
- No. 25 by ESPNW and No. 919 by USA Today
- Won three straight Missouri State Championships
- 2019 WBCA All-America, Missouri All-State

# 2022-23 PURDUE WOMEN'S BASKETBALL GAME NOTES

## 3 | Jayla Smith

2022-23	Min.	FG	3FG	FT	O-D-T	PF	Pts	A	To	S	B	+/-
PNW (ex)	26	3-5	0-1	6-6	1-0-1	1	12	2	2	2	0	14
Marshall	28	6-11	3-4	1-2	0-2-2	1	16	0	2	2	1	6
Murray St.	23	3-9	0-3	2-3	3-2-5	2	8	2	1	1	1	11
SIUE	25	2-6	0-1	3-5	1-3-4	2	7	4	3	4	0	33
Indiana St.	26	4-7	1-2	1-6	0-1-1	1	10	1	0	1	1	0
Harvard	19	3-7	1-4	0-0	0-2-2	1	7	2	3	2	0	6
FSU	9	1-2	1-2	0-0	0-0-0	2	3	1	0	0	0	-4
Okla. State	11	1-2	0-1	1-1	0-0-0	0	3	0	1	0	0	-5
Syracuse	12	2-4	0-1	2-3	1-1-2	0	6	1	1	0	0	-4
MSU	10	0-2	0-1	0-0	0-1-1	0	0	0	2	1	0	-10
Maryland	10	0-2	0-1	0-0	0-1-1	0	0	0	2	1	0	-10
Illinois State	18	3-9	2-3	0-0	1-2-3	3	8	1	4	0	1	9
Texas A&M	23	4-8	0-2	0-2	0-0-0	2	8	2	0	1	0	7
Iowa	18	4-8	0-0	1-1	3-0-3	0	9	0	3	0	0	-19
Wisconsin*	23	3-8	0-2	2-6	1-1-2	0	8	1	1	1	0	14
Penn State*	30	4-10	2-4	1-2	3-2-5	0	11	2	1	1	1	-14
Michigan*	18	5-13	0-5	2-2	0-2-2	1	14	0	1	0	0	-10
NU	21	5-9	1-2	0-0	0-1-1	2	11	1	1	2	1	12
Nebraska	23	4-10	1-4	2-2	3-4-7	1	11	4	1	0	0	-8
Minnesota	22	6-9	1-3	0-0	0-1-1	3	13	2	0	0	1	13
Illinois												
Ohio State												
Indiana												
Rutgers												
NU												
MSU												
Indiana												
Penn State												
Minnesota												

\* Started

^Big Ten Tournament

## 10 | Jeanae Terry

2022-23	Min.	FG	3FG	FT	O-D-T	PF	Pts	A	To	S	B	+/-
PNW (ex)	25	4-6	0-0	3-4	0-5-5	4	11	5	4	1	0	22
Marshall*	32	2-2	0-0	1-2	4-6-10	2	5	10	3	2	0	20
Murray St.*	30	2-4	0-0	5-5	1-9-10	1	9	10	0	1	0	42
SIUE*	27	6-9	0-0	5-9	2-5-7	2	17	4	1	4	0	31
Indiana St.*	26	0-2	0-0	0-0	1-5-6	2	0	12	2	1	0	33
Harvard*	31	3-6	0-2	1-3	1-12-13	2	7	8	5	4	1	7
FSU*	38	2-9	0-1	2-2	4-8-12	3	6	8	4	2	0	4
Okla. State*	30	4-8	0-0	3-5	3-4-7	2	11	6	1	0	1	4
Syracuse*	27	2-3	0-0	3-4	0-4-4	1	7	6	2	2	1	-1
MSU*	41	2-8	0-1	2-3	1-7-8	3	6	8	4	2	2	5
Maryland*	26	2-3	0-0	5-6	1-2-3	3	9	6	5	3	0	4
Illinois State*	36	4-5	0-0	1-2	1-6-7	1	9	6	2	0	0	15
Texas A&M*	36	1-2	0-0	1-2	0-11-11	2	3	7	1	2	1	11
Iowa*	34	2-8	0-2	0-0	2-6-8	1	4	7	1	3	0	-9
Wisconsin*	29	3-5	0-0	1-2	3-3-6	1	7	7	2	5	0	19
Penn State*	24	0-2	0-0	2-2	1-8-9	3	2	3	5	2	1	-1
Michigan*	26	2-6	0-0	0-0	1-2-3	3	4	5	5	1	0	-23
NU*	28	3-6	0-0	0-4	6-3-9	4	6	10	6	2	0	10
Nebraska*	28	2-6	1-2	3-6	3-5-8	2	8	2	4	2	1	-9
Minnesota*	27	4-9	0-0	0-0	1-6-7	1	8	8	4	0	0	11
Illinois												
Ohio State												
Indiana												
Rutgers												
NU												
MSU												
Indiana												
Penn State												
Minnesota												

\* Started

^Big Ten Tournament

## 5 | Cassidy Hardin

2022-23	Min.	FG	3FG	FT	O-D-T	PF	Pts	A	To	S	B	+/-
PNW (ex)	25	3-7	3-7	0-0	0-6-6	1	9	2	1	0	2	17
Marshall*	39	3-11	3-11	0-0	0-4-4	1	9	1	0	1	0	15
Murray St.*	21	1-2	1-1	0-0	0-3-3	0	3	2	0	0	0	26
SIUE*	23	1-3	0-2	2-2	0-1-1	2	4	2	0	0	0	17
Indiana St.*	24	5-7	5-7	3-4	0-3-3	1	18	0	1	2	0	21
Harvard*	26	3-4	3-4	0-0	0-2-2	2	9	2	0	1	0	27
FSU*	15	4-9	3-8	0-0	0-4-4	3	11	0	2	0	0	-3
Okla. State*	25	0-2	0-2	1-2	0-2-2	2	1	0	0	0	0	4
Syracuse*	19	1-6	1-5	0-0	0-0-0	2	3	2	0	0	0	3
MSU*	29	4-11	3-9	0-0	1-3-4	1	11	1	1	0	0	5
Maryland*	31	4-7	3-6	0-0	0-6-6	0	11	3	1	1	0	3
Illinois State*	26	2-7	1-6	0-0	0-1-1	4	5	1	1	2	0	3
Texas A&M*	37	4-13	3-11	2-3	0-2-2	4	13	2	1	0	0	3
Iowa*	29	4-11	2-8	0-0	0-4-4	1	10	1	2	1	0	-12
Wisconsin*	19	1-3	1-3	0-0	0-1-1	1	3	2	0	1	0	-1
Penn State*	20	1-6	1-5	0-0	0-2-2	0	3	0	3	0	0	-4
Michigan	21	1-2	1-2	3-4	0-2-	0	6	1	0	1	0	-6
NU	20	1-5	1-4	0-0	0-1-1	1	3	2	4	2	0	5
Nebraska	22	2-5	2-4	0-0	0-1-1	1	6	1	0	1	0	-7
Minnesota*	31	4-11	4-11	2-2	1-3-4	1	14	2	0	1	0	19
Illinois												
Ohio State												
Indiana												
Rutgers												
NU												
MSU												
Indiana												
Penn State												
Minnesota												

\* Started

^Big Ten Tournament

## 11 | Lasha Petree

2022-23	Min.	FG	3FG	FT	O-D-T	PF	Pts	A	To	S	B	+/-
PNW (ex)	23	4-9	2-4	4-4	1-1-2	3	14	1	3	2	1	15
Marshall*	21	5-12	1-5	2-3	1-0-1	5	13	0	3	0	0	-3
Murray St.*	25	9-15	3-5	2-2	1-3-4	4	23	0	0	0	0	18
SIUE*	23	7-13	1-4	2-3	0-1-1	0	17	0	1	3	1	18
Indiana St.*	15	6-9	2-4	3-4	0-1-1	3	17	1	5	0	0	11
Harvard*	26	9-14	3-5	2-3	1-2-3	3	23	0	3	0	0	25
FSU*	32	6-19	1-7	2-4	1-4-5	3	15	3	3	2	1	5
Okla. State*	32	8-15	1-4	3-4	3-3-6	3	20	3	2	2	0	5
Syracuse*	30	13-21	1-3	4-5	0-7-7	4	31	1	8	1	2	1
MSU*	34	7-14	2-5	2-2	2-6-8	3	18	2	8	1	3	6
Maryland*	29	5-11	1-4	3-4	0-2-2	3	14	0	2	0	2	-4
Illinois State*	29	4-10	1-2	5-5	2-1-3	4	14	1	3	3	1	8
Texas A&M*	27	2-13	2-6	3-4	2-4-	6	3	9	3	3	2	5
Iowa*	30	6-18	3-8	7-8	2-2-4	4	22	2	3	1	0	-2
Wisconsin*	30	5-13	2-4	6-6	0-1-1	3	18	3	4	2	0	2
Penn State*	23	4-14	2-4	2-2	0-5-5	3	12	1	2	3	0	-5
Michigan	11	1-5	0-1	2-2	0-1-1	2	4	1	1	0	0	-1
NU	11	1-5	0-1	0-0	0-1-1	0	2	2	0	1	0	-3
Nebraska	9	0-2	0-1	0-0	0-1-1	0	0	0	3	0	0	-8
Minnesota*	27	4-12	3-6	1-2	2-3-5	2	12	3	1	1	1	5
Illinois												
Ohio State												
Indiana												
Rutgers												
NU												
MSU												
Indiana												
Penn State												
Minnesota												

\* Started

^Big Ten Tournament

# 2022-23 PURDUE WOMEN'S BASKETBALL GAME NOTES

## 14 | Ava Learn

2022-23	Min.	FG	3FG	FT	O-D-T	PF	Pts	A	To	S	B	+/-
PNW (ex)	15	1-2	0-0	2-3	1-2-3	2	4	3	1	0	0	16
Marshall	5	0-1	0-0	0-0	2-0-2	1	0	0	0	1	0	-3
Murray St.	10	2-3	0-1	0-0	1-0-1	1	4	0	1	1	0	-8
SIUE	12	1-1	0-0	0-0	2-2-4	1	2	1	2	0	1	11
Indiana St.	14	4-4	0-0	0-0	0-2-2	2	8	0	0	1	0	4
Harvard	15	1-2	0-0	1-2	0-2-2	1	3	1	1	0	0	5
FSU	3	0-1	0-0	0-0	0-0-0	1	0	0	0	0	0	-2
Okla. State	20	2-2	0-0	8-10	1-3-4	3	12	0	0	0	0	4
Syracuse	13	2-4	0-0	2-2	1-2-3	0	6	2	1	0	0	9
MSU	12	1-2	0-0	0-0	0-2-2	2	2	1	3	1	0	5
Maryland	7	1-1	0-0	2-2	1-1-2	2	4	0	1	1	0	-2
Illinois State	14	2-3	0-0	3-3	0-2-2	1	7	1	2	0	2	8
Texas A&M	6	0-1	0-0	0-0	0-0-0	0	0	0	1	1	0	2
Iowa	3	0-0	0-0	0-0	0-0-0	0	0	0	0	0	0	0
Wisconsin	15	5-5	0-0	2-2	0-4-4	3	12	1	2	0	0	5
Penn State	23	3-5	0-0	2-2	0-3-3	3	4	3	3	0	1	-5
Michigan	12	1-2	0-0	0-0	1-1-2	3	2	3	0	0	0	-5
NU*	16	1-6	0-0	0-0	2-1-3	1	2	0	1	1	0	-1
Nebraska*	14	1-4	0-0	0-0	1-1-2	4	2	1	3	0	0	5
Minnesota	5	0-0	0-0	0-0	0-3-3	1	0	0	0	0	1	6
Illinois												
Ohio State												
Indiana												
Rutgers												
NU												
MSU												
Indiana												
Penn State												
Minnesota												

\* Started

^Big Ten Tournament

## 30 | Addison Potts

2022-23	Min.	FG	3FG	FT	O-D-T	PF	Pts	A	To	S	B	+/-
PNW (ex)	6	0-1	0-0	0-0	0-1-1	1	0	0	2	0	0	9
Marshall	DNP											
Murray St.	5-0	0-0	0-0	0-0	0-0-0	1	0	2	0	0	0	1
SIUE	7	1-2	0-0	0-1	0-0-0	0	2	0	0	0	0	11
Indiana St.*	4	0-0	0-0	0-0	0-0-0	1	0	0	0	0	0	-9
Harvard	3	0-1	0-0	0-0	0-0-0	1	0	0	0	0	0	-3
FSU	DNP											
Okla. State	DNP											
Syracuse	DNP											
MSU	DNP											
Maryland	DNP											
Illinois State	DNP											
Texas A&M	DNP											
Iowa	DNP											
Wisconsin	DNP											
Penn State	DNP											
Michigan	2	0-0	0-0	0-0	0-0-0	1	0	0	0	0	0	-1
NU	DNP											
Nebraska	DNP											
Minnesota	DNP											
Illinois												
Ohio State												
Indiana												
Rutgers												
NU												
MSU												
Indiana												
Penn State												
Minnesota												

\* Started

^Big Ten Tournament

## 23 | Abbey Ellis

2022-23	Min.	FG	3FG	FT	O-D-T	PF	Pts	A	To	S	B	+/-
PNW (ex)	6	0-0	0-0	2-2	0-0-0	0	2	1	0	0	0	3
Marshall	DNP											
Murray St.	19	1-3	1-2	2-2	0-2-2	2	5	1	3	0	0	-5
SIUE	18	9-11	3-4	8-8	0-2-2	0	29	0	0	2	0	27
Indiana St.	19	1-5	0-1	0-0	0-3-3	0	2	2	3	2	0	11
Harvard	21	3-6	1-2	3-3	0-0-0	1	10	2	0	0	0	12
FSU	29	4-6	2-2	4-4	1-1-2	2	14	1	1	1	0	-1
Okla. State	32	8-15	1-4	3-4	3-3-6	3	20	3	2	2	0	5
Syracuse	21	3-5	1-3	2-4	0-3-3	1	9	0	2	1	0	5
MSU	21	4-6	0-1	5-5	0-1-1	2	13	0	3	1	0	-6
Maryland*	26	7-12	2-5	2-4	1-3-4	2	18	1	4	0	0	1
Illinois State*	36	3-7	0-2	3-3	1-6-7	0	9	3	1	1	1	12
Texas A&M*	31	4-9	2-5	1-2	1-1-2	0	11	1	1	0	0	2
Iowa*	29	1-6	0-3	1-2	1-4-5	3	3	1	1	2	0	0
Wisconsin	24	1-4	0-0	4-4	0-1-1	2	6	0	1	1	0	2
Penn State	21	1-4	0-2	2-2	0-3-3	3	4	3	3	0	1	-5
Michigan*	36	1-6	0-2	0-0	0-2-2	1	2	4	3	0	0	-20
NU*	34	7-15	3-8	7-7	0-2-2	2	24	3	2	1	0	15
Nebraska*	38	7-12	4-7	2-2	1-5-6	2	20	1	2	1	1	-7
Minnesota*	30	2-5	0-2	0-0	1-4-5	1	4	3	2	1	0	17
Illinois												
Ohio State												
Indiana												
Rutgers												
NU												
MSU												
Indiana												
Penn State												
Minnesota												

\* Started

^Big Ten Tournament

## 31 | Lilly Stoddard

2022-23	Min.	FG	3FG	FT	O-D-T	PF	Pts	A	To	S	B	+/-
PNW (ex)	8	1-1	0-0	2-2	0-3-3	2	4	1	0	0	0	8
Marshall	DNP											
Murray St.	2-0	0-1	0-0	0-0	0-0-0	0	0	0	0	0	1	-3
SIUE	4	0-1	0-0	0-0	0-0-0	3	0	0	0	0	0	8
Indiana St.	3	0-1	0-0	0-0	1-0-1	0	0	0	1	0	0	-5
Harvard	5	1-1	0-0	0-0	0-0-0	1	2	0	0	0	0	-4
FSU	DNP											
Okla. State	DNP											
Syracuse	DNP											
MSU	DNP											
Maryland	DNP											
Illinois State	DNP											
Texas A&M	DNP											
Iowa	DNP											
Wisconsin	DNP											
Penn State	-1	0-0	0-0	0-0	0-0-0	0	0	0	0	0	0	-2
Michigan	3	0-0	0-0	0-0	0-0-0	0	0	0	0	0	0	-1
NU	DNP											
Nebraska	DNP											
Minnesota	DNP											
Illinois												
Ohio State												
Indiana												
Rutgers												
NU												
MSU												
Indiana												
Penn State												
Minnesota												

\* Started

^Big Ten Tournament



# 2022-23 PURDUE WOMEN'S BASKETBALL GAME NOTES

## 33 | Madison Layden

2022-23	Min.	FG	3FG	FT	O-D-T	PF	Pts	A	To	S	B	+/-
PNW (ex)	26	2-6	2-5	2-2	1-2-3	2	8	7	0	0	23	
Marshall*	38	5-10	2-6	1-1	1-5-6	2	13	5	0	3	0	14
Murray St.*	30	6-13	3-7	0-0	0-1-1	3	15	6	0	0	0	32
SIUE*	26	1-6	1-5	0-0	0-5-5	3	3	4	1	0	0	18
Indiana St.*	30	2-8	1-5	5-6	0-7-7	2	10	4	2	1	0	19
Harvard*	27	0-2	0-1	0-0	0-3-3	2	0	5	2	0	0	18
FSU*	36	5-8	5-7	0-0	0-3-3	4	15	4	3	1	1	0
Okla. State*	29	2-9	2-8	0-0	0-6-6	3	6	2	4	3	1	3
Syracuse*	34	1-5	0-4	2-2	0-7-7	2	4	3	3	0	0	11
MSU*	37	2-6	1-3	4-4	0-8-8	4	9	3	4	0	0	8
Maryland*	37	1-4	1-4	1-2	0-5-5	2	4	4	4	2	2	-5
Illinois State	DNP											
Texas A&M	DNP											
Iowa	23	3-10	2-6	0-0	0-1-1	4	8	1	0	1	0	-15
Wisconsin	28	0-4	0-3	0-0	0-2-2	2	0	3	4	4	1	9
Penn State	21	0-2	0-2	0-0	0-0-0	3	0	5	1	1	0	-9
Michigan*	33	6-8	4-6	0-0	0-3-3	4	16	2	1	0	0	-17
NU*	35	2-7	2-7	2-2	0-7-7	2	8	1	0	2	0	5
Nebraska*	32	0-3	0-3	0-0	0-1-1	3	0	4	1	2	0	-2
Minnesota	23	2-5	2-5	0-0	0-3-3	0	6	2	0	0	0	12
Illinois												
Ohio State												
Indiana												
Rutgers												
NU												
MSU												
Indiana												
Penn State												
Minnesota												

\* Started

^Big Ten Tournament

## 35 | Rickie Woltman

2022-23	Min.	FG	3FG	FT	O-D-T	PF	Pts	A	To	S	B	+/-
PNW (ex)	18	2-3	0-0	6-9	2-3-5	0	10	0	3	0	1	1
Marshall	10	0-1	0-0	0-0	0-2-2	0	0	0	0	1	0	3
Murray St.	15	3-5	0-0	0-0	1-2-3	1	6	0	1	0	1	-8
SIUE	14	1-3	0-0	2-4	2-3-5	1	4	0	1	1	0	21
Indiana St.	20	1-1	0-0	4-4	0-5-5	1	6	1	1	0	1	12
Harvard	12	4-5	0-0	1-1	1-4-5	0	9	1	0	0	0	6
FSU	10	1-1	0-0	1-2	1-0-1	0	3	0	0	0	1	-8
Okla. State	11	1-1	0-0	0-0	1-2-3	4	2	0	2	0	0	13
Syracuse	15	2-3	0-0	2-2	0-2-2	2	6	0	2	0	2	2
MSU	26	1-2	0-0	0-0	3-7-10	3	2	1	2	1	0	5
Maryland	11	2-3	0-0	0-0	2-0-2	1	4	0	0	0	0	-6
Illinois State	18	3-3	0-0	0-0	1-2-3	2	6	0	1	0	0	1
Texas A&M	10	0-1	0-0	0-0	1-1-2	2	0	0	1	0	0	-3
Iowa	7	1-2	0-0	0-0	1-1-2	1	2	0	0	0	0	-9
Wisconsin	9	3-4	0-0	0-0	2-1-3	1	6	0	1	0	0	10
Penn State	5	0-0	0-0	0-0	0-1-1	0	0	0	0	0	0	-5
Michigan	13	0-1	0-0	1-2	0-1-1	3	1	0	2	0	0	-4
NU	20	2-3	0-0	1-2	1-7-8	3	5	0	0	0	0	16
Nebraska	8	1-1	0-0	0-0	0-1-1	2	2	0	1	0	0	-4
Minnesota	24	4-6	0-0	2-2	1-7-8	1	10	1	1	0	0	15
Illinois												
Ohio State												
Indiana												
Rutgers												
NU												
MSU												
Indiana												
Penn State												
Minnesota												

\* Started

^Big Ten Tournament

## 34 | Caitlyn Harper

2022-23	Min.	FG	3FG	FT	O-D-T	PF	Pts	A	To	S	B	+/-
PNW (ex)	24	10-13	0-0	2-3	1-4-5	2	22	1	3	2	2	25
Marshall*	30	6-11	2-3	3-6	2-2-4	1	17	0	3	0	4	8
Murray St.*	24	8-14	1-2	0-0	2-3-5	3	17	2	1	2	2	40
SIUE*	23	6-7	0-1	3-4	1-4-5	1	15	0	4	0	0	13
Indiana St.*	21	3-7	0-0	0-0	0-1-1	2	6	0	1	0	0	20
Harvard*	20	7-8	0-0	1-2	0-2-2	1	15	1	2	0	0	11
FSU*	30	3-7	0-0	2-4	2-4-6	1	8	0	1	0	0	4
Okla. State*	20	2-5	0-2	0-0	0-5-5	2	4	0	2	0	1	-2
Syracuse*	24	3-5	0-1	3-3	3-5-8	3	9	1	2	0	1	8
MSU*	13	3-5	1-1	2-3	1-2-3	3	9	0	2	0	1	1
Maryland*	26	4-4	0-0	2-3	0-2-2	0	10	0	3	2	0	4
Illinois State	25	3-4	0-0	0-0	1-1-2	3	6	0	3	1	0	9
Texas A&M*	32	7-11	1-4	0-1	1-4-5	2	15	3	0	1	0	3
Iowa*	29	4-9	2-4	0-0	1-4-5	4	10	0	1	1	1	-9
Wisconsin*	25	6-12	1-2	0-0	0-2-2	1	13	3	1	2	0	0
Penn State*	36	9-13	2-4	0-0	5-4-9	3	20	1	3	0	0	-1
Michigan*	27	4-7	2-2	0-0	0-1-1	2	10	0	1	0	4	-17
NU*	17	2-5	0-0	0-0	0-1-1	4	4	0	4	2	0	-4
Nebraska*	29	3-7	1-2	8-8	2-2-4	3	15	0	0	0	0	5
Minnesota*	14	4-9	0-3	0-0	1-2-3	3	8	0	0	1	0	-3
Illinois												
Ohio State												
Indiana												
Rutgers												
NU												
MSU												
Indiana												
Penn State												
Minnesota												

\* Started

^Big Ten Tournament



## 2022-23 Purdue Women's Basketball Combined Team Statistics All games

Page 1/1  
as of Jan 23, 2023

### Game Records

Record	Overall	Home	Away	Neutral
ALL GAMES	13-6	8-3	3-2	2-1
CONFERENCE	4-5	2-3	2-2	0-0
NON-CONFERENCE	9-1	6-0	1-0	2-1

### Score by Periods

Team	1st	2nd	3rd	4th	OT	TOT
Purdue	357	317	366	342	13	1395
Opponents	295	274	329	337	8	1243

### Team Box Score

No.	Player				Total		3-Point		F-Throw		Rebounds												
		GP-GS	MIN	AVG	FG-FGA	FG%	3FG-3FGA	3FG%	FT-FTA	FT%	OFF	DEF	TOT	AVG	PF	DQ	A	TO	BLK	STL	PTS	AVG	
11	PETREE, Lasha	19-16	458:28	24.1	102-235	.434	29-79	.367	51-63	.810	17	48	65	3.4	52	1	26	55	12	22	284	14.9	
34	HARPER, Caitlyn	19-19	457:49	24.1	87-150	.580	13-31	.419	24-34	.706	22	51	73	3.8	42	0	11	34	14	12	211	11.1	
23	ELLIS, Abbey	18-7	473:31	26.3	62-129	.481	21-55	.382	50-56	.893	8	46	54	3.0	26	0	27	33	3	15	195	10.8	
3	SMITH, Jayla	19-3	371:07	19.5	67-143	.469	13-45	.289	18-35	.514	16	27	43	2.3	22	0	26	28	7	16	165	8.7	
5	HARDIN, Cassidy	19-16	472:49	24.9	46-125	.368	38-110	.345	13-17	.765	2	45	47	2.5	27	0	25	16	0	14	143	7.5	
33	LAYDEN, Madison	17-13	513:02	30.2	38-110	.345	26-82	.317	15-17	.882	1	67	68	4.0	45	0	58	30	5	20	117	6.9	
10	TERRY, Jeanae	19-19	572:09	30.1	46-103	.447	1-8	.125	35-57	.614	36	112	148	7.8	39	0	133	57	8	38	128	6.7	
14	LEARN, Ava	19-2	215:15	11.3	27-47	.574	0-1	.000	20-23	.870	12	29	41	2.2	27	0	12	20	6	8	74	3.9	
35	WOLTMAN, Rickie	19-0	251:16	13.2	30-46	.652	0-0	.000	14-19	.737	18	49	67	3.5	28	0	4	16	6	3	74	3.9	
30	POTTS, Addison	5-0	19:03	3.8	1-3	.333	0-0	.000	0-1	.000	0	0	0	0.0	4	0	2	0	0	0	2	0.4	
31	STODDARD, Lilly	6-0	16:06	2.7	1-4	.250	0-0	.000	0-0	.000	1	0	1	0.2	4	0	0	1	1	0	2	0.3	
4	RUDINI, Kate	3-0	04:24	1.5	0-0	.000	0-0	.000	0-0	.000	0	1	1	0.3	0	0	0	0	0	0	0	0.0	
Team											34	47	81					12					
Total		19	3825		507-1095	.463	141-411	.343	240-322	.745	167	522	689	36.3	316	1	324	302	62	148	1395	73.4	
Opponents		19	3825		444-1162	.382	129-414	.312	226-335	.675	230	434	664	34.9	325	1	239	299	47	138	1243	65.4	

### Team Statistics

	PURDUE	OPP
<b>Scoring</b>	<b>1395</b>	<b>1243</b>
Points per game	73.4	65.4
Scoring margin	+8.0	-
<b>Field goals-att</b>	<b>507-1095</b>	<b>444-1162</b>
Field goal pct	.463	.382
<b>3 point fg-att</b>	<b>141-411</b>	<b>129-414</b>
3-point FG pct	.343	.312
3-pt FG made per game	7.4	6.8
<b>Free throws-att</b>	<b>240-322</b>	<b>226-335</b>
Free throw pct	.745	.675
F-Throws made per game	12.6	11.9
<b>Rebounds</b>	<b>689</b>	<b>664</b>
Rebounds per game	36.3	34.9
Rebounding margin	+1.3	-
<b>Assists</b>	<b>324</b>	<b>239</b>
Assists per game	17.1	12.6
<b>Turnovers</b>	<b>302</b>	<b>299</b>
Turnovers per game	15.9	15.7
Turnover margin	-0.2	-
Assist/turnover ratio	1.1	0.8
<b>Steals</b>	<b>148</b>	<b>138</b>
Steals per game	7.8	7.3
<b>Blocks</b>	<b>62</b>	<b>47</b>
Blocks per game	3.3	2.5
<b>Winning streak</b>	<b>1</b>	<b>-</b>
Home win streak	1	-
<b>Attendance</b>	<b>33620</b>	<b>20498</b>
Home games-Avg/Game	11-3056	5-4100
Neutral site-Avg/Game	-	3-195

### Team Results

Date	Opponent		Score	Att.
11/10/2022	Marshall	W	73-61	2058
11/13/2022	Murray St.	W	90-61	2866
11/17/2022	SIUE	W	100-58	1861
11/20/2022	Indiana St.	W	77-54	3053
11/24/2022	vs Harvard	W	85-63	200
11/25/2022	vs Florida St.	L	75-76	248
11/26/2022	vs Oklahoma St.	W	71-65	136
11/30/2022	Syracuse	W	87-78	2521
12/05/2022	at Michigan St.	Wot	76-71	3015
12/08/2022	Maryland	L	74-77	3008
12/11/2022	Illinois St.	W	64-51	3429
12/21/2022	at Texas A&M	W	59-53	1608
12/29/2022	at Iowa	L	68-83	11942
01/01/2023	Wisconsin	W	73-61	3552
01/07/2023	at Penn St.	L	60-70	2367
01/10/2023	Michigan	L	59-80	3473
01/14/2023	at Northwestern	W	65-54	1566
01/18/2023	Nebraska	L	64-71	2796
01/21/2023	Minnesota	W	75-56	5003



## 2022-23 Purdue Women's Basketball Combined Team Statistics In Conference games

Page 1/1  
as of Jan 23, 2023

### Game Records

Record	Overall	Home	Away	Neutral
ALL GAMES	4-5	2-3	2-2	0-0
CONFERENCE	4-5	2-3	2-2	0-0
NON-CONFERENCE	0-0	0-0	0-0	0-0

### Score by Periods

Team	1st	2nd	3rd	4th	OT	TOT
Purdue	156	144	161	140	13	614
Opponents	157	141	153	164	8	623

### Team Box Score

No.	Player				Total		3-Point		F-Throw		Rebounds													
		GP-GS	MIN	AVG	FG-FGA	FG%	3FG-3FGA	3FG%	FT-FTA	FT%	OFF	DEF	TOT	AVG	PF	DQ	A	TO	BLK	STL	PTS	AVG		
11	PETREE, Lasha	9-6	201:51	22.4	33-94	.351	13-34	.382	23-26	.885	6	22	28	3.1	20	0	14	24	6	9	102	11.3		
34	HARPER, Caitlyn	9-9	213:04	23.7	39-71	.549	9-18	.500	12-14	.857	10	20	30	3.3	23	0	4	15	6	8	99	11.0		
23	ELLIS, Abbey	9-5	257:23	28.6	31-70	.443	9-29	.310	23-26	.885	4	25	29	3.2	18	0	16	21	2	7	94	10.4		
3	SMITH, Jayla	9-3	174:36	19.4	34-73	.466	5-22	.227	10-16	.625	11	13	24	2.7	7	0	11	11	3	5	83	9.2		
5	HARDIN, Cassidy	9-6	220:02	24.4	22-61	.361	18-53	.340	5-6	.833	2	23	25	2.8	6	0	13	11	0	8	67	7.4		
10	TERRY, Jeanae	9-9	262:08	29.1	20-53	.377	1-5	.200	13-23	.565	19	42	61	6.8	21	0	56	36	4	20	54	6.0		
33	LAYDEN, Madison	9-5	265:36	29.5	16-49	.327	12-39	.308	7-8	.875	0	30	30	3.3	24	0	25	15	3	12	51	5.7		
14	LEARN, Ava	9-2	105:43	11.7	13-25	.520	0-0	.000	6-6	1.000	5	16	21	2.3	16	0	7	12	3	4	32	3.6		
35	WOLTMAN, Rickie	9-0	119:53	13.3	14-22	.636	0-0	.000	4-6	.667	10	26	36	4.0	15	0	2	7	1	1	32	3.6		
31	STODDARD, Lilly	2-0	03:10	1.6	0-0	.000	0-0	.000	0-0	.000	0	0	0	0.0	0	0	0	0	0	0	0	0.0		
30	POTTS, Addison	1-0	01:31	1.5	0-0	.000	0-0	.000	0-0	.000	0	0	0	0.0	1	0	0	0	0	0	0	0.0		
Team											17	16	33				8							
Total		9	1825		222-518	.429	67-200	.335	103-131	.786	84	233	317	35.2	151	0	148	160	28	74	614	68.2		
Opponents		9	1825		220-544	.404	68-194	.351	115-168	.685	105	211	316	35.1	145	1	129	149	21	73	623	69.2		

### Team Statistics

	PURDUE	OPP
<b>Scoring</b>	<b>614</b>	<b>623</b>
Points per game	68.2	69.2
Scoring margin	-1.0	-
<b>Field goals-att</b>	<b>222-518</b>	<b>220-544</b>
Field goal pct	.429	.404
<b>3 point fg-att</b>	<b>67-200</b>	<b>68-194</b>
3-point FG pct	.335	.351
3-pt FG made per game	7.4	7.6
<b>Free throws-att</b>	<b>103-131</b>	<b>115-168</b>
Free throw pct	.786	.685
F-Throws made per game	11.4	12.8
<b>Rebounds</b>	<b>317</b>	<b>316</b>
Rebounds per game	35.2	35.1
Rebounding margin	+0.1	-
<b>Assists</b>	<b>148</b>	<b>129</b>
Assists per game	16.4	14.3
<b>Turnovers</b>	<b>160</b>	<b>149</b>
Turnovers per game	17.8	16.6
Turnover margin	-1.2	-
Assist/turnover ratio	0.9	0.9
<b>Steals</b>	<b>74</b>	<b>73</b>
Steals per game	8.2	8.1
<b>Blocks</b>	<b>28</b>	<b>21</b>
Blocks per game	3.1	2.3
<b>Winning streak</b>	<b>1</b>	<b>-</b>
Home win streak	1	-
<b>Attendance</b>	<b>17832</b>	<b>18890</b>
Home games-Avg/Game	5-3566	4-4723
Neutral site-Avg/Game	-	0-0

### Team Results

Date	Opponent		Score	Att.
12/05/2022	at Michigan St.	Wot	76-71	3015
12/08/2022	Maryland	L	74-77	3008
12/29/2022	at Iowa	L	68-83	11942
01/01/2023	Wisconsin	W	73-61	3552
01/07/2023	at Penn St.	L	60-70	2367
01/10/2023	Michigan	L	59-80	3473
01/14/2023	at Northwestern	W	65-54	1566
01/18/2023	Nebraska	L	64-71	2796
01/21/2023	Minnesota	W	75-56	5003



## LAST TIME OUT



Official Basketball Box Score - Final

## Minnesota at Purdue

01/21/23 Mackey Arena, West Lafayette  
2022-23 Women's Basketball

Game Time: 2:00 PM

Game Duration: 1:43

Attendance: 5,003

Officials: Felicia Grinter, Kevin Pethtel, Brian Hall

Minnesota - 56

Record: 9-11 (2-7)

NO.	Name	Min	FG M-A	3P M-A	FT M-A	Rebounds OR DR TOT	Fouls PF FD	TP	AS	TO	ST	Blocks BS BA	+/-
4	Alanna Micheaux	F 32:26	1-7	0-0	0-0	5 10 15	4 1	2	1	5	0	1 0	-5
24	Mallory Heyer	F 31:56	4-13	3-9	2-2	3 1 4	2 1	13	0	1	0	1 0	-11
3	Amaya Battle	G 30:01	4-9	0-0	6-8	0 4 4	1 4	14	3	1	0	0 0	-9
5	Maggie Czinano	G 31:56	3-9	0-0	1-2	4 7 11	2 2	7	1	0	0	0 1	-10
10	Mara Braun	G 32:43	5-19	2-8	3-4	1 3 4	1 2	15	2	2	0	0 0	-12
14	Isabelle Gradwell	10:05	0-1	0-0	0-0	0 2 2	2 0	0	1	2	0	0 1	-9
23	Katie Borowicz	23:19	2-9	1-6	0-0	0 1 1	1 3	5	1	1	1	0 1	-25
15	Angelina Hammond	04:59	0-1	0-1	0-0	0 0 0	1 0	0	1	0	0	0 0	-11
13	Destinee Oberg	02:35	0-1	0-0	0-0	0 0 0	0 0	0	0	0	0	0 0	-3
Team						4 0 4		0		1			
<b>Totals</b>			19-69	6-24	12-16	17 28 45	14 13	56	10	13	1	2 3	-19

Technical Fouls::NONE

Shooting By Period		
1 <sup>st</sup> FG%	5-15	33.3%
3PT%	2-6	33.3%
FT%	3-4	75%
2 <sup>nd</sup> FG%	4-16	25.0%
3PT%	1-7	14.3%
FT%	1-2	50%
3 <sup>rd</sup> FG%	6-19	31.6%
3PT%	2-5	40.0%
FT%	4-4	100%
4 <sup>th</sup> FG%	4-19	21.1%
3PT%	1-6	16.7%
FT%	4-6	66.7%
GM FG%	19-69	27.5%
3PT%	6-24	25.0%
FT%	12-16	75.0%

Dead Ball Rebounds: 3, 0

Purdue - 75

Record: 13-6 (4-5)

NO.	Name	Min	FG M-A	3P M-A	FT M-A	Rebounds OR DR TOT	Fouls PF FD	TP	AS	TO	ST	Blocks BS BA	+/-
34	Caitlyn Harper	F 13:16	4-9	0-3	0-0	1 2 3	3 0	8	0	0	1	0 0	-3
5	Cassidy Hardin	G 30:20	4-11	4-11	2-2	1 3 4	1 3	14	2	0	1	0 1	19
10	Jeanae Terry	G 26:15	4-9	0-0	0-0	1 6 7	1 0	8	8	4	0	0 0	11
11	Lasha Petree	G 26:57	4-12	3-6	1-2	2 3 5	2 3	12	3	1	1	1 0	5
23	Abbey Ellis	G 29:33	2-5	0-2	0-0	1 4 5	1 3	4	3	2	1	0 0	17
35	Rickie Woltman	23:30	4-6	0-0	2-2	1 7 8	1 3	10	1	1	0	0 1	15
3	Jayla Smith	21:49	6-9	1-3	0-0	0 1 1	3 0	13	2	0	0	1 0	13
33	Madison Layden	23:06	2-5	2-5	0-0	0 3 3	0 1	6	2	0	0	0 0	12
14	Ava Learn	05:14	0-0	0-0	0-0	0 3 3	1 1	0	0	0	0	1 0	6
Team						1 1 2		0		0			
<b>Totals</b>			30-66	10-30	5-6	8 33 41	13 14	75	21	8	4	3 2	19

Technical Fouls::NONE

Shooting By Period		
1 <sup>st</sup> FG%	8-18	44.4%
3PT%	4-11	36.4%
FT%	2-2	100%
2 <sup>nd</sup> FG%	8-16	50.0%
3PT%	3-7	42.9%
FT%	3-4	75%
3 <sup>rd</sup> FG%	6-18	33.3%
3PT%	0-5	0.0%
FT%	0-0	0%
4 <sup>th</sup> FG%	8-14	57.1%
3PT%	3-7	42.9%
FT%	0-0	0%
GM FG%	30-66	45.5%
3PT%	10-30	33.3%
FT%	5-6	83.3%

Dead Ball Rebounds: 1, 1

	MIN	PUR
Biggest lead	3 (1 <sup>st</sup> 7:49)	19 (2 <sup>nd</sup> 1:05)
Best Scoring Run	6 (2 <sup>nd</sup> 8:35)	9 (1 <sup>st</sup> 2:16)
Lead Changes	1	
Times Tied	2	
Time with Lead	01:01	36:01

Points from	MIN	PUR
Turnovers	2	20
Paint	20	34
Second Chance	11	6
Fast Breaks	0	3
Bench	5	29

Period by Period Scoring					
	1st	2nd	3rd	4th	TOT
MIN	15	10	18	13	56
PUR	22	22	12	19	75

# 2022-23 PURDUE WOMEN'S BASKETBALL GAME NOTES



## PURDUE BOILERMAKERS

Overall - 13-6 | BIG - 4-5 | Streak - W1 | AP - - | Coaches - - | NET - 46 | Home - 8-3 | Away - 3-1 | Neutral - 2-1 | Post - -  
 Offense - 73.4 | Defense - 65.4 | Scoring Margin - +8.0 | Field Goal% - .463 | Field Goal% Defense - .382 | 3-Pt.%(PG) - .343 (7.4)  
 Opp 3-Pt.%(PG) - .312 (6.8) | Rebounding - 36.3 | Rebound Margin - +1.3 | Assists - 171 | Turnovers - 15.9 | Turnover Margin - -0.2

### SERIES HISTORY

Overall	64-18
At Home	33-5
On the Road	26-12
Neutral Site	5-2
Streak	Purdue - 3
Under Gearlds	2-0

### 2022-23 SCHEDULE

Opponent	Date/Result
Purdue NW	W, 98-67
Marshall	W, 73-61
Murray State	W, 90-61
SIUE	W, 100-58
Indiana State	W, 77-54
vs. Harvard (1)	W, 85-63
vs. Florida State (1)	L, 76-75
vs. Oklahoma State (1)	W, 71-65
Syracuse (2)	W, 87-78
at Michigan State*	W, 76-71
#20 Maryland*	L, 77-74
Illinois State	W, 64-51
at Texas A&M	W, 59-53
at #10 Iowa*	L, 83-68
Wisconsin*	W, 73-61
at Penn State*	L, 70-60
Michigan*	L, 80-59
at Northwestern*	W, 65-54
Nebraska*	L, 71-64
Minnesota*	W, 75-56
at Illinois*	J26
at Ohio State	J29
Indiana	F5
at Rutgers	F9
Northwestern	F12
Michigan State	F15
at Indiana	F19
Penn State	F22
at Minnesota	F26
Big Ten Tournament (4)	M1-5
1 - Cancun Challenge (Mexico)	
2 - Big Ten/ACC Challenge	
3 - Las Vegas Holiday Classic	
4 - BIG Tournament (Minneapolis)	

### HEAD COACH KATIE GEARLDS

Purdue Record - 30-21 (2nd)  
 Career Record - 258-71 (10th)  
 Alma Mater - Purdue '07  
 Highlights - 2x NAIA National Champ, 3x NAIA Coach of the Year, 8 years at Marian, 7th Overall to Seattle in 2007 Draft, Legend of Mackey, 2007 All-America

### COACHING STAFF

Asso. Head Coach Beth Couture  
 Assistant Coach Michael Scruggs  
 Assistant Coach Alex Guyton

### PRONUNCIATIONS

2 - Holzer - ah-NOAH  
 14 - Learn - AA-va  
 11 - Petree - LAY-sha pee-TREE  
 10 - Terry - Jah-NAY  
 31 - Stoddard - STAH-dard  
 AHC - Couture - COO-chur  
 HC - Gearlds - Gerald's (soft-g)  
 DoV - Hasser-Smith - LAKE-en

### 2 - Ainhoe Holzer - Fr. - G - 5-9 - Martigny, Switzerland

GP/GS	MIN.	PPG	RPG	APG	STLS	BLKS	FG%	3P%	FT%
/									

LAST GAME: Did not play due to season-ending injury

### 3 - Jayla Smith - So. - G - 6-0 - Indianapolis, Ind. - Lawrence North

GP/GS	MIN.	PPG	RPG	APG	STLS	BLKS	FG%	3P%	FT%
19/3	19.5	8.7	2.3	1.4	16	7	.469	.289	.514

LAST GAME: 13 pts, 1 reb, 2 asts, 1 blk, 22 mins

### 5 - Cassidy Hardin - 5th - G - 5-10 - Center Grove, Ind. - Center Grove

GP/GS	MIN.	PPG	RPG	APG	STLS	BLKS	FG%	3P%	FT%
19/16	24.9	7.5	2.5	1.3	14	0	.368	.345	.765

LAST GAME: 14 pts, 4 3pt, 4 rebs, 2 asts, 1 stl, 31 mins

### 10 - Jeanae Terry - Sr. - G - 5-11 - Detroit, Mich. - Wayne Memorial - Illinois

GP/GS	MIN.	PPG	RPG	APG	STLS	BLKS	FG%	3P%	FT%
19/19	30.1	6.7	7.8	7.9	38	8	.447	.125	.614

LAST GAME: 8 pts, 7 rebs, 8 asts, 26 mins

### 11 - Lasha Petree - 5th - G - 6-0 - Detroit, Mich. - Arbor Prep - Bradley - Rutgers

GP/GS	MIN.	PPG	RPG	APG	STLS	BLKS	FG%	3P%	FT%
19/16	24.1	14.9	3.4	1.4	22	12	.434	.367	.810

LAST GAME: 12 pts, 5 rebs, 3 asts, 1 stl, 1 blk, 27 mins

### 14 - Ava Learn - So. - G/F - 6-1 - Hyde Park, N.Y. - Our Lady of Lourdes

GP/GS	MIN.	PPG	RPG	APG	STLS	BLKS	FG%	3P%	FT%
19/2	11.3	3.9	2.2	0.6	8	6	.574	.000	.870

LAST GAME: 3 rebs, 1 blk, 5 mins

### 23 - Abbey Ellis - Sr. - G - 5-6 - Melbourne, Australia - Our Lady of Mercy - Cal Poly

GP/GS	MIN.	PPG	RPG	APG	STLS	BLKS	FG%	3P%	FT%
17/6	26.1	11.2	2.9	1.4	14	3	.484	.396	.893

LAST GAME: 4 pts, 5 rebs, 3 asts, 1 stl, 30 mins

### 30 - Addison Potts - Fr. - G - 6-0 - Fort Myers, Fla. - South Fort Myers

GP/GS	MIN.	PPG	RPG	APG	STLS	BLKS	FG%	3P%	FT%
5/0	3.8	0.4	0.0	0.4	0	0	.333	.000	.000

LAST GAME: Did not play

### 31 - Lilly Stoddard - Fr. - F - 6-4 - Crown Point, Ind. - Crown Point

GP/GS	MIN.	PPG	RPG	APG	STLS	BLKS	FG%	3P%	FT%
6/0	2.7	0.3	0.2	0.0	0	1	.250	.000	.000

LAST GAME: Did not play

### 33 - Madison Layden - Jr. - G - 6-1 - Kokomo, Ind. - Northwestern

GP/GS	MIN.	PPG	RPG	APG	STLS	BLKS	FG%	3P%	FT%
17/13	30.2	6.9	4.0	3.4	20	5	.345	.317	.882

LAST GAME: 6 pts, 3 rebs, 2 asts, 23 mins

### 34 - Caitlyn Harper - R-Sr. - F - 6-2 - Hartland, Wisc. - Arrowhead - Cal Baptist

GP/GS	MIN.	PPG	RPG	APG	STLS	BLKS	FG%	3P%	FT%
19/19	24.1	11.1	3.8	0.6	12	14	.580	.419	.706

LAST GAME: 8 pts, 3 rebs, 1 stl, 13 mins

### 35 - Rickie Woltman - Sr. - F - 6-4 - St. Louis, Mo. - Incarnate Word

GP/GS	MIN.	PPG	RPG	APG	STLS	BLKS	FG%	3P%	FT%
19/0	13.2	3.9	3.5	0.2	3	6	.652	.000	.737

LAST GAME: 10 pts, 8 rebs, 1 ast, 24 mins

- Will miss the season due to injury
- Played several seasons in the Swiss Basketball League
- Represented Switzerland at several youth levels
- 2022 SBL Young & Most Improved Player

### Career Highs:

P - -  
 R - -  
 A - -  
 M - -

- Hit double figures seven times
- Made first start vs. Wisconsin
- Sank two triples late vs. Marshall
- Appeared in 30 games, averaging 4.7 points per game as a freshman
- Purdue's 10th Indiana Miss Basketball

### Career Highs:

P - 16 2 times  
 R - 7 3 times  
 A - 4 2 times  
 M - 30 at Penn State - 1/7/23

- Sixth in program history in 3-pointers
- Deferred medical school start to return
- One of three players in Purdue history to play in five seasons
- 188 of 219 made shots have been threes
- Made a 3 in 92 games, multiple in 52

### Career Highs:

P - 25 Denver - 12/12/21  
 R - 8 Minnesota - 1/27/22  
 A - 5 3 times  
 M - 43 Indiana - 1/16/22

- 2nd in BIG in assists and assists per game
- 1-of-3 nationally over six ppg, rpg & apg
- 17th in Purdue history in career assists
- First Boiler with a non-point double-double
- Only player in Purdue history (men's & women's) to record multiple triple-doubles

### Career Highs:

P - 28 at Wisconsin - 1/31/21  
 R - 17 2 times  
 A - 12 2 times  
 M - 41 Michigan State - 12/5/22

- 61 points from 2,000 for her career
- 14th in among active DI players in points
- Scored in double figures in 15 games
- Recorded 100th career start vs. Harvard.
- Played three years at Bradley and one at Rutgers

### Career Highs:

P - 36 Indiana State - 1/5/20  
 R - 12 at Evansville - 1/11/19  
 A - 6 at Drake - 2/20/20  
 M - 40 4 times

- Made first career start at Northwestern
- Energetic spark off the bench
- Scored 10 in the third vs. Wisconsin
- Tallied five of Purdue's final 11 points to seal comeback win against Oklahoma State
- Four-time Poughkeepsie Journal All-Star

### Career Highs:

P - 13 at Rutgers - 2/20/22  
 R - 4 3 times  
 A - 3 Michigan - 1/10/23  
 M - 23 3 times

- Nine games in double figures
- Topped 20 points three times this year
- First in the Big Ten in FT%
- Moved to the bench after 31 starts last year
- All-Big Ten honorable mention last year
- First Australian in program history

### Career Highs:

P - 39 at San Diego St. - 12/21/20  
 R - 10 Long Beach State - 3/10/21  
 A - 11 Western Michigan - 11/14/21  
 M - 44 Indiana - 1/16/22

- Scored first collegiate points vs. SIUE
- 2022 Prep Hoops Florida Miss Basketball
- 3-time First Team News-Press SWFL
- Played varsity basketball starting in seventh grade, scored 2,098 points

### Career Highs:

P - 2 SIUE - 11/17/22  
 R - -  
 A - 2 Murray State - 11/13/22  
 M - 7 SIUE - 11/17/22

- Scored first collegiate points vs. Harvard
- No. 87 player in the nation by ESPNW
- Won 2021 IHSAA 4A State Championship
- Finished with a 103-7 career record in high school

### Career Highs:

P - 2 Florida State - 11/25/22  
 R - 1 Indiana State - 11/20/22  
 A - -  
 M - 2 Murray State - 11/13/22

- Five games in double figures
- Scored 16 pts with 4 3-pointers vs. Michigan
- Returned from 2-game illness vs. Iowa
- Big Ten All-Freshman & honorable mention
- First in IHSAA history to lead three Final Fours in scoring

### Career Highs:

P - 20 2 times  
 R - 8 4 times  
 A - 7 Michigan State - 1/3/21  
 M - 44 Indiana - 1/16/22

- 11 games in double figures
- Dropped a season-high 20 at Penn State
- 1-of-6 from BIG with 10 ppg & 55 FG%
- 2022 WAC Player of the Year and CoSIDA All-American
- Led the WAC in scoring with 17.7 points

### Career Highs:

P - 30 at Utah Valley - 1/15/22  
 R - 14 3 times  
 A - 5 at UTRGV - 2/13/21  
 M - 41 at Chicago State - 3/2/22

- Finished two reboundy shy of a double-double against Minnesota
- Played 20.3 minutes per game last year, following just 4.9 in her first two seasons
- No. 25 by ESPNW and No. 919 by USA Today

### Career Highs:

P - 18 Penn State - 2/9/22  
 R - 11 2 times  
 A - 3 at Rutgers - 2/20/22  
 M - 33 West Virginia - 11/25/21