



# PURDUE BOILERMAKERS

## 2024 VOLLEYBALL GAME NOTES

# BIG

SID: Rachel Coe | coer@purdue.edu | Office: 765-496-7842 | Cell: 518-729-9960  
900 John R. Wooden Drive, West Lafayette, IN 47907

### 2024 PURDUE VOLLEYBALL SCHEDULE

Overall Record: 15-4 (6-2 Big Ten)

Home: 6-1

Away: 5-2

Neutral: 4-1

#### AUGUST

30 K-State (BIG+)\* W, 3-1  
31 UMBC (BIG+)\* W, 3-0

#### SEPTEMBER

1 UC Davis (BIG+)\* W, 3-0  
5 vs. California W, 3-1  
6 at Utah W, 3-0  
7 at Utah State (MWN) W, 3-0  
13 vs. Houston+ W, 3-0  
14 vs. #10 Kentucky+ W, 3-1  
19 at #10 Kansas# L, 1-3  
20 vs. #9 Creighton# L, 1-3  
21 vs. Tulsa# W, 3-0  
25 #4 PENN STATE (BTN)\* L, 0-3  
28 at #16 Minnesota (BTN)\* W, 3-2

#### OCTOBER

4 at Northwestern (BIG+)\* W, 3-1  
6 MICHIGAN STATE (BTN)\* W, 3-0  
11 at #2 Nebraska (BTN)\* L, 2-3  
12 at Iowa (BIG+)\* W, 3-1  
17 UCLA (BIG+)\* W, 3-2  
19 INDIANA (Mackey Arena | BTN)\* W, 3-0  
23 OHIO STATE (BTN)\* 7 p.m.  
26 #8 WISCONSIN (Mackey Arena | NBC)\* 3:30 p.m.

#### NOVEMBER

1 at Maryland (BTN)\* 6:30 p.m.  
2 at Rutgers (BIG+)\* 7 p.m.  
8 at Indiana (BIG)\* 7 p.m.  
10 MICHIGAN (BIG+)\* 1 p.m.  
14 RUTGERS (BIG+)\* 6 p.m.  
17 ILLINOIS (BTN)\* 5 p.m.  
21 at #3 Penn State (BTN)\* TBD  
23 #16 USC (BIG+)\* 7 p.m.  
27 at #11 Oregon (BTN)\* 10:30 p.m.  
29 at #RV Washington (BIG+)\* TBD

All Times Eastern

\* Big Ten match

^ Stacey Clark Classic

+ SMU Doubletree Invitational

# Jayhawk Classic

### #10 PURDUE BOILERMAKERS

15-4 | 6-2 Big Ten

Coach: Dave Shondell (22nd season)

Record at Purdue: 473-230

VS

### OHIO STATE BUCKEYES

8-10 | 1-7 Big Ten

Coach: Jen Flynn Oldenburg (5th season)

Record at Indiana: 84-48

WED. 10/23 - 7 PM ET - WEST LAFAYETTE - HOLLOWAY GYMNASIUM - BTN

SERIES HISTORY: 47-48 | LAST MEETING: W, 3-1 AT OHIO STATE

### #10 PURDUE BOILERMAKERS

15-4 | 6-2 Big Ten

Coach: Dave Shondell (22nd season)

Record at Purdue: 473-230

VS

### #8 WISCONSIN BADGERS

15-4 | 7-1 Big Ten

Coach: Kelly Sheffield (12th season)

Record at Wisconsin: 307-65

SAT. 10/26 - 3:30 PM ET - WEST LAFAYETTE - MACKEY ARENA - BTN

SERIES HISTORY: 35-53 | LAST MEETING: W, 3-0 AT PURDUE (8/25/18)

#### SCHEDULE BREAKDOWN

- Purdue begins its longest homestand of the season with four consecutive matches (two weeks) at home.
- The homestand comes after seeing 11 of the last 13 matches on the road.
- Purdue recently finished a stretch of five top-16 foes in six matches, which included three straight top-10 showdowns.
- Purdue has played 5 top-10 teams and own a 1-4 record vs. those foes, however all four losses are to teams currently in the top eight in the AVCA poll. Meanwhile, 50% of those losses are to top-3 teams.
- The schedule features six non-conference matchups vs. 2023 NCAA Tournament teams.
- A total of 12 matches this fall will come against teams ranked or receiving votes in the 2023 final poll.
- Purdue will play two matches in its historic **Mackey Arena**: vs. Indiana (10/19) for the Monon Spike trophy match and the following week vs. Wisconsin (10/26).
- The 2024 season will marks the **most road matches** in non-conference action since 2008, with Purdue at home for two matches in the month of September.
- The regular season will close with **four straight matches vs. teams ranked or receiving votes, with three on the road**: at #3 Penn State (11/21), vs. #16 USC (11/23), at #11 Oregon (11/27) and at receiving votes (RV) Washington (11/29).

#### PURDUE VS. OHIO STATE: HISTORY AT A GLANCE

- Purdue is 3-2 over the last five meetings vs. Ohio State.
- The Boilermakers and Buckeyes are nearly even in home/away series, with Purdue owning the 24-17 record in West Lafayette and Ohio State holding the 17-26 edge in Columbus.
- Neither team has swept the other since 2018, seeing eight consecutive four or five setters.

#### PURDUE VS. WISCONSIN: HISTORY AT A GLANCE

- Purdue is 21-20 all-time in home matches vs. Wisconsin.
- Over the last five matches, Purdue holds the winning record with three wins, two of which have come in West Lafayette.
- The Boilermakers are coming off a thrilling five-set win vs. Wisconsin in Holloway Gymnasium last season, which was also a Gold Out match.

#### LAST TIME OUT VS. WISCONSIN

- Raven Colvin erased Wisconsin's match point on a kill in Set 5, which Purdue came back to take the next to points and win the match 22-25, 25-19, 25-20, 12-25, 16-14
- The Boilermakers had career-best performances across the board in the win, led by Eva Hudson's still-career-high 30 kills and 11 digs. She was just the 12th Boilermaker in program history to post 30 kills in a match.
- Taylor Anderson dished out a then-career-high 57 assists, which was the most by a Boilermaker in five years.

50 SEASONS

25 NCAA  
TOURNAMENT  
APPEARANCES

23 AVCA  
ALL-AMERICANS

## AVCA/Taraflex Top-25 Coaches Poll (10/21)

Rank	School	Record	Previous Rank
1	Pittsburgh (50)	17-1	1
2	Nebraska (10)	18-1	2
3	Penn State (1)	18-1	3
4	Louisville	16-2	4
5	Stanford	14-3	5
6	Creighton	17-2	5
7	Texas	12-3	7
8	Wisconsin	13-4	9
9	Kansas	16-1	8
10	Purdue	15-4	10
11	Oregon	14-3	11
12	SMU	14-5	12
13	Arizona State	18-2	13
14	Kentucky	11-7	15
15	Minnesota	12-6	14
16	USC	14-4	16
17	Georgia Tech	13-4	17
18	TCU	14-4	18
19	Florida State	14-4	19
20	Dayton	19-1	21
T-21	BYU	12-6	24
T-21	Utah	15-3	20
23	Baylor	11-6	22
24	Florida	11-5	23
25	North Carolina	15-2	NR

**Receiving votes:** Marquette 34; Washington 31; Arkansas 28; Texas A&M 21; South Dakota State 13; Auburn 12; Michigan 6; UCLA 6; Illinois 4; Miami (FL) 4; Virginia 4

### Purdue In The AVCA/Taraflex Poll

Date	Rank	Date	Rank
2023 Final	#13	W7 (10/14)	#10
2024 Preseason	#8	W8 (10/21)	#10
W1 (9/2)	#8	W9 (10/28)	
W2 (9)	#7	W10 (11/4)	
W3 (9/16)	#6	W11 (11/11)	
W4 (9/23)	#10	W12 (11/18)	
W5 (9/30)	#10	W13 (11/25)	
W6 (10/7)	#10	W14 (12/2)	
		Final	

### Big Ten of the Week Awards

Player 9/2:	Eva Hudson
Setter 9/9:	Taylor Anderson
Defensive 9/16:	Raven Colvin
Defensive 10/7:	Ali Hornung

### AVCA National Player of the Week

Player 9/2:	Eva Hudson
-------------	------------

### RETURNING 2023 ALL-AMERICANS

- Purdue returns all three AVCA All-America honorees: junior Eva Hudson (second team), sophomore Chloe Chicoine (third team) and senior Raven Colvin (honorable mention).
- Hudson is the youngest Boilermaker to receive Second Team All-America honors since 1986.
- Chicoine's third team accolade was the highest-ever AVCA All-America honor by a Purdue newcomer.

### PURDUE VOLLEYBALL'S ALL-TIME WINNINGEST HEAD COACH

- With the sweep vs. Michigan State on 10/6, HC Dave Shondell became the all-time winningest head coach in Purdue volleyball history, surpassing AVCA Hall of Famer Carol Dewey, with his 470th win.
- Shondell is one of two active head coaches in the Big Ten with as many wins at their institution (joined by John Cook) and is one of seven among Power 4 programs.

### PROGRAM RECORDS FALLING

- Since Big Ten play has started, eight program records have been set or tied: Big Ten regular-season match and Purdue home attendance record (14,876 fans vs. Indiana, 10/19); Longest match (2:53 at #2 Nebraska); Most team aces in a 5-set match during the rally-scoring era (17 at then-#16 Minnesota); Most aces by an individual in a 5-set match during the rally-scoring era (7 by Raven Colvin at then-#16 Minnesota); Most aces by a freshman (6 by Ryan McAleer); Most team digs in a 3-set match in the current 25-point rally scoring (71 vs. Michigan State); Most wins in program history (Dave Shondell, 470).
- Meanwhile, the program is poised tie the attendance record again with its Mackey match vs. Wisconsin on Saturday.

### PURDUE: QUICK HITS

- The team is #12 in the nation in blocks per set (2.80), #14 in kills per set (13.86) and #16 in hitting % (.281).
- Eva Hudson and Chloe Chicoine were named to the **AVCA Player of the Year Watch List in September**.
- Three Boilers are averaging **2.5 kills per set** or higher: Hudson (4.31), Chicoine (3.29) and Colvin (2.61).
- Purdue is 49-21 in sets won this season.
- The Boilers are averaging .281 hitting %. To put in perspective, it would rank as #3 in Purdue single-season history if things were to end today. It would be **just the second time this century the Boilers have hit so efficiently**.
- Raven Colvin is #4 in the nation in blocks per set (including #1 in the Big Ten) with 1.63 per set, which would tie the program record if the season were to end today, while her .404 hitting % would rank #2 in Purdue single-season history. To put in perspective, the current season-record is .409% (First Team All-American Stephanie Lynch in 2008) and 1.63 blocks per set (Taylor Trammell, 2020).
- Freshman DS Ryan McAleer has recorded a perfect reception % in 12 matches. Moreover, she recorded six aces at then-#16 Minnesota, tying as the most-ever by a Purdue freshman. She set a new career-high 15 digs vs. Indiana (10/19).
- Eva Hudson has stepped up in the biggest matches of the season. She set a season-high 26 kills on a .349% at #2 Nebraska and nearly had an errorless match at now-#9 Kansas, committing just one attack error in the final points of the match. This season, she is averaging 4.31 kills per set and 4.72 points per set this season.

### NCAA SELECTION COMMITTEE TOP-16 REVEAL

- Purdue was slotted at #12 in the NCAA Selection Committee's Top-16 reveal on Sunday, which means if the season were to end today, the Boilermakers would host NCAA First and Second Rounds.
- The Boilermakers have taken on six other teams so far in the top-16, owning a 2-4 record vs. those teams and will play four more matches against teams in the committee's sights.

### SCOUTING THE OHIO STATE BUCKEYES

- The Buckeyes come into this match searching for their second conference win after recent losses against Michigan, #3 Penn State, and #3 Nebraska. In fact, OSU is coming off a tough 24-hour turn around vs. top-5 teams win its 2-3 loss to Penn State and then a three-set loss the next night vs. Nebraska.
- Outside hitter Emily Londot leads the BIG in points/set (5.41) and is 2nd kills/set (4.61). She has recorded at least 10 kills in every match this season and had the first triple-double (15 kills, 11 digs, 10 blocks) nationally by a non-setter.
- Freshman outside hitter Emmi Sellman has adjusted well to NCAA play, tallying 27 kills in the loss to #3 Penn State.
- Freshman libero Olivia Hasbrook leads the Buckeyes and ranks fifth in the Big Ten with 3.94 digs/set.

### SCOUTING THE WISCONSIN BADGERS

- The Badgers will play Indiana on Thursday before facing off in Mackey Arena Saturday afternoon. Finding their groove, they've won the last seven matches, only dropping two sets in the process.
- Middle blocker Carter Booth was named Big Ten Defensive Player of the Week, announced Monday afternoon. Booth averaged 1.88 blocks per set, including a career-night of 12.0 total blocks Sunday at Michigan.
- Coming off her AVCA National Player of the Year season, outside hitter Sarah Franklin has not taken her foot of the gas. She is currently #6 in the Big Ten in kills (279) and #3 in kills/set (4.43).
- Wisconsin's net presence is one of the best in the nation, ranking #7 in blocks per set (2.91) and #6 in hitting % (.303%).
- The Badgers' pressure from the service line has them ranked 6th in the Big 10 in service aces (106) and 4th in services aces/set (1.68).

### PURDUE VS TOP-25 TEAMS

- The Boilermakers recently finished a stretch of playing six ranked opponents in a 10 match span, all of which are currently ranked in the top-15.
- Purdue Match Highs: .311% at #2 Nebraska | 15 blocks at #2 Nebraska
- The Boilers totaled 79 digs at then-#16 Minnesota, a season-high, along with 17 aces, a program record-tying number in a Big Ten match.

### CHICOINE'S ERRORLESS PERFORMANCE VS. INDIANA

- Chloe Chicoine went errorless on the attack vs. Indiana (10/19), recording 12 kills on 30 attacks for a .400 clip.
- The last time a Purdue outside hitter went errorless with a 30 attack minimum was All-American Grace Cleveland vs. Indiana in 2021.
- In fact, Chicoine is just the third Boilermaker in the last 10 years to go errorless on the attack with a 30-attempt minimum. In addition to Cleveland's match, she is joined by Sherridan Atkinson's.
- She is the only outside hitter in the Big Ten to go errorless on the attack in league action this year, and is just the second overall this season, joined by Oregon's Mimi Colyer's 12-0-33 (.364%) show vs. San Diego on Sept. 14.
- Meanwhile, she went errorless in seven of eight sets last week (vs. UCLA and vs. Indiana).

### HUDSON: STRONG STARTS IN SET 1

- Eva Hudson has opened the last two matches with an errorless attack in Set 1.
- She's gone errorless in the opening game in nine of 19 matches, including four of five top-25 matchups.

### PURDUE IN 5-SET MATCHES

- Purdue is 11-6 in five-set matches over the last three seasons, including 2-1 in 2024.
- The Boilermakers have gone errorless in the last two fifth sets: 13-0-27 at #2 Nebraska and 9-0-20 vs. #RV UCLA).
- The Boilers have hit over .400 in every 5th set this season (.429 at #16 Minnesota, .481% at #2 Nebraska, .450 vs. #RV UCLA).

Big Ten Individual Rankings

<b>Blocks Per Set</b>
No. 1 Raven Colvin (1.71)
<b>Total Assists</b>
No. 1 Taylor Anderson (756)
<b>Total Kills</b>
No. 2 Eva Hudson (302)
<b>Total Blocks</b>
No. 1 Raven Colvin (114)
<b>Hitting %</b>
No. 5 Raven Colvin (.404)
<b>Digs Per Set</b>
No. 7 Ali Hornung (3.89)
<b>Kills Per Set</b>
No. 4 Eva Hudson (4.31)
<b>Total Attacks</b>
No. 2 Eva Hudson (800)
<b>Total Points</b>
No. 3 Eva Hudson (330.5)
No. 9 Raven Colvin (276)
No. 15 Chloe Chicoine (255)

Big Ten Team Rankings

<b>No. 2   Attacks Per Set (34.74)</b>
<b>No. 2   Total Blocks (196.0)</b>
<b>No. 2   Digs Per Set (15.11)</b>
<b>No. 2   Receive % (94.7)</b>
<b>No. 4   Points Per Set (18.14)</b>
<b>No. 3   Assists Per Set (12.89)</b>
<b>No. 3   Kills Per Set (13.86)</b>
<b>No. 4   Hitting % (.281)</b>
<b>No. 4   Total Kills (970)</b>

NCAA 2024 Attendance Rankings

Attendance	Match, Date
1. 15,084	Marquette at Wisconsin, 9/17
2. 14,876	Indiana at #10 Purdue, 10/19
3. 14,126	Nebraska at Louisville, 9/22
4. 14,035	Texas vs. Wisconsin, 9/1
14,035	Stanford vs. Minnesota, 9/1

2024 Indiv. National Rankings

<b>Blocks Per Set</b>
No. 4 Raven Colvin (1.63)
<b>Total Blocks</b>
No. 5 Raven Colvin (114)
<b>Assists Per Set</b>
No. 13 Taylor Anderson (10.80)
<b>Hitting %</b>
No. 23 Raven Colvin (.404)
<b>Attacks Per Set</b>
No. 24 Eva Hudson (11.43)
<b>Kills Per Set</b>
No. 25 Eva Hudson (4.31)
<b>Career Blocks Per Set</b>
No. 3 Raven Colvin (1.38)
<b>Career Total Blocks</b>
No. 3 Raven Colvin (572)
<b>Career Kills Per Set</b>
No. 3 Eva Hudson (4.34)
<b>Career Attacks Per Set</b>
No. 10 Eva Hudson (11.76)

PURDUE AT #2 NEBRASKA

- Purdue's 2-hour 53-minute five-setter at #2 Nebraska was the longest match in known-program history (research available through 1999). The second-longest match in program history was also last year's five-setter vs. #2 Nebraska, which clocked in at 2 hours and 51 minutes.
- The Boilermakers held match point, 14-13 and went errorless in Set 5 (13-0-27) for a .481 set clip.
- In addition to Purdue edging Nebraska in efficiency, .311% vs. .242%, Purdue blew Nebraska's previous opponents away as the most efficient team the Huskers have faced (previous opponent-high: SMU's .242% on 9/3/24).
- Purdue out-blocked Nebraska, 15-5, holding the Huskers to a season-low. Raven Colvin was on 11 of those 15 blocks.
- Eva Hudson and Chloe Chicoine went off, combining for 48 kills and each hitting over .300% in the match.
- The Achilles heel for Purdue was service errors, tallying 19 errors in the match, including four in Set 5.

14,870 STRONG: SETTING A BIG TEN-MATCH ATTENDANCE RECORD

- Purdue set the Big Ten regular-season match attendance record, the state of Indiana attendance record for volleyball, and the Purdue volleyball home attendance record last Saturday. Saturday's match vs. Wisconsin will tied the record, as it is already sold out.
- Purdue eclipsed the old attendance record for a regular-season match between two Big Ten opponents, which stood at 10,927 (#23 Illinois at #2 Minnesota, 10/16/04). It will also set a Purdue volleyball home attendance record.
- The matches have been sold out for nearly a month. (Sold out on Friday, September 20).
- The last time Purdue volleyball played in Mackey Arena was in 2016 vs. Indiana, which also happened to be the Monon Spike match in front of a crowd of 8,240 fans.
- Last week's match was **the second-largest crowd in women's volleyball this year**.
- The last and only time Purdue and Wisconsin met in Mackey Arena was in 2008, which the attendance of 10,570 fans was second-largest crowd to witness a Big Ten regular-season match in conference history.

**SHONDELL QUOTE:** "It's time to take our Boilermakers back into Mackey Arena. The opportunity to grow our program, as well as our sport, is essential right now. Holloway is a special home, but for a few matches this fall, our team and Boilermaker Nation, must make Mackey Arena the best home-court environment in the land."

HISTORY OF ATTENDANCE SUCCESS

- Purdue set the NCAA women's volleyball attendance record in Mackey Arena on Oct. 29, 1985 with 10,645 fans watching Purdue defeating Western Michigan 3-1 (11-15, 15-6, 15-5, 15-2). The event was dubbed "Pac Mac" with promotions that allowed patrons to attend for just \$1.

TOP-10 TAKEDOWNS

- In every season for the last 10 years, Purdue has picked up at least one top-10 victory. In fact, Purdue's won 20 top-10 showdowns since 2015 (last: vs. #10 Kentucky, 3-1 on 9/14/24).

PURDUE IN THE NATIONAL RANKINGS: 118 CONSECUTIVE WEEKS

- The program has been ranked for 118 consecutive weeks (since preseason 2017), the longest active streak in Purdue Athletics.
- Since the 2021 spring season, Purdue has been ranked among the top-10 for 35 weeks.
- The Boilermakers' history of excellence includes 53 of the last 69 weeks ranked among the top-15 (75%).
- Purdue has spent the entirety of the 2024 season in the top-10 (includes preseason poll).

PURDUE ATHLETICS INVESTING IN THE PROGRAM

- New this season, Purdue will play two matches in the history Mackey Arena.
- Holloway Gymnasium is home to a **brand-new Taraflex court**.
- The team received new **updates to their locker room, player lounge and film room**.
- A new \$11 million Purdue **Student-Athlete Dining Facility** opened on July 31.
- The **weight room** used by volleyball, men's and women's basketball has undergone construction and entirely new equipment has been purchased.

2024 Team National Rankings

<b>No. 12   Blocks Per Set (2.80)</b>
<b>No. 14   Kills Per Set (13.86)</b>
<b>No. 16   Hitting % (.281)</b>
<b>No. 19   Assists Per Set (12.89)</b>
<b>No. 21   Total Blocks (196.0)</b>



School	Big Ten Record	Overall Record	Overall Pct.
Nebraska	8-0	18-1	.947
Penn State	8-0	18-1	.947
Wisconsin	7-1	13-4	.765
Oregon	6-2	14-3	.824
Purdue	6-2	15-4	.789
USC	6-2	14-4	.778
Michigan	5-3	15-4	.789
Illinois	5-3	13-5	.722
Minnesota	5-3	12-6	.667
Washington	4-4	14-4	.778
UCLA	3-5	9-8	.529
Iowa	3-5	9-11	.450
Indiana	2-6	9-9	.500
Northwestern	2-6	4-12	.250
Maryland	1-7	10-9	.526
Ohio State	1-7	8-10	.444
Michigan State	0-8	7-12	.368
Rutgers	0-8	5-14	.263

## Wins vs. Top-10 Opponents

### Last 8 Years (2017-present)

Opponent	Score	Date
vs. #10 Kentucky	3-1	9/14/24
vs. #3 Wisconsin	3-2	11/17/23
vs. #8 Minnesota	3-0	9/23/22
vs. #3 Ohio State	3-2	9/24/21
vs. #3 Wisconsin	3-1	10/31/21
at #4 Wisconsin	3-1	11/12/21
at #8 Minnesota	3-1	11/14/21
vs. #5 BYU	3-2	12/9/21
at #10 Penn State	3-1	3/5/21
at #9 Ohio State	3-1	3/26/21
at #9 Ohio State	3-1	3/27/21
vs. #5 Nebraska	3-2	10/26/19
at #4 Penn State	3-2	10/27/18
vs. #9 Creighton	3-1	9/8/17
vs. #5 Minnesota	3-1	11/10/17
vs. #10 Wisconsin	3-0	11/11/17
vs. #10 Michigan State	3-1	11/24/17
vs. #9 Stanford	3-2	9/9/16
vs. #4 Kansas	3-1	9/16/16
vs. #3 Minnesota	3-2	11/21/15

## Top-25 Wins in Holloway

### By Most Recent (Since 2011)

Opponent	Score	Date
vs. #3 Wisconsin	3-2	11/17/2023
vs. #16 Penn State	3-2	11/5/2023
vs. #19 Kentucky	3-2	9/9/2023
vs. #8 Minnesota	3-0	9/23/2022
vs. #3 Wisconsin	3-1	10/31/2021
vs. #15 Penn State	3-2	10/17/2021
vs. #3 Ohio State	3-2	9/24/2021
vs. #22 Tennessee	3-0	9/18/2021
vs. #16 Marquette*	3-1	12/7/2019
vs. #23 Michigan	3-0	11/23/2019
vs. #5 Nebraska	3-2	10/26/2019
vs. #10 Michigan State	3-1	11/24/2017
vs. #10 Wisconsin	3-0	11/11/2017
vs. #13 Michigan	3-1	10/28/2016
vs. #4 Kansas	3-1	9/16/2016
vs. #3 Minnesota	3-2	11/21/2015
vs. #18 Illinois	3-2	10/25/2015
vs. #22 Ohio State	3-2	10/18/2014
vs. #19 Michigan State	3-2	11/30/2013
vs. #6 Nebraska	3-0	11/22/2013
vs. #15 Wisconsin	3-2	11/2/2013
vs. #12 Ohio State	3-0	10/4/2013
vs. #21 Illinois	3-2	9/29/2012
vs. #21 Northern Iowa	3-0	8/24/2012

\*NCAA Tournament match

## Week 7 Snapshot: Last Week in Review

### NATIONAL RANKINGS

**Total Kills**  
**No. 21** | Eva Hudson, 41

### AMONG THE BIG TEN

**No. 3** | Team Kills (109)

**No. 3** | Team Hitting % (.328)

**No. 3** | Team Digs (126)

**No. 3** | Team Assists (105)

**No. 4** | Team Service Aces (14)

**Total Points**  
**No. 3** | Eva Hudson (42.5)

**Total Kills**  
**No. 3** | Eva Hudson (41)

**Hitting %**  
**No. 9** | Raven Colvin (.412)

### LAST WEEK'S NEED-TO-KNOW

- Purdue went 2-0 last week, registering a five-set victory vs. UCLA and a dominating sweep vs. Indiana in Mackey Arena to set the Big Ten regular-season match record with its 14,876 fans in attendance.
- Eva Hudson led the team with 5.13 kills per set on a .402 hitting clip.
- The Boilermakers averaged a .328 hitting % and held opponents to a .185% last week.
- Raven Colvin led the team, averaging a .419 attack %, including
- Lourdès Myers totaled a team-leading 11 blocks (1.38 per set) with three solo, 7 assisted.
- Chloe Chicoine went errorless in seven of eight sets last week, including an errorless match vs. Indiana, becoming the third Purdue outside hitter in the last 10 years to do so with a 30-attack minimum, joined by All-Americans Grace Cleveland and Sherridan Atkinson. Meanwhile, it was the first time this season a Big Ten outside hitter has accomplished the feat in league play.

### RECAP: #10 PURDUE VS. UCLA (23-25, 27-25, 25-20, 19-25, 15-11)

- Purdue ground out a 3-2 win vs. UCLA in the first-ever regular season meeting
- The Boilermakers posted a Big Ten match season-high .325 hitting %, which included an errorless Set 5's .450%.
- Six individual season and/or career-highs were set along the way.
- Taylor Anderson led with 51 assists, 12 digs, five blocks and a career-high seven kills. She was responsible for three kills and a block assist in Set 5, including a block and kill on back-to-back points for the 12-8 advantage. It was the fourth match this season she's reached 50 assists and the seventh match with a double-double.
- Eva Hudson led the attack with 24 kills on 56 attacks with two errors (.393%). The outside hitter tied a career-high 17 digs in the outing, the most since her freshman season (17 vs. Illinois, 9/30/22), and went errorless in three of the five sets.
- The Boilermakers came back to steal Set 2 in its largest set comeback of the season to win it 27-25. The 10-2 run to end the set included five UCLA set points, marking the second time this season that the Boilermakers have erased multiple set points during its comeback.
- Raven Colvin finished with a team-leading hitting % (.556) while registering 17 kills and 2 errors on 27 attacks and six total blocks (1-5). She came just two kills shy of tying her career-high and moved into #2 all-time in Purdue career blocks.
- Chicoine was errorless in four of the team's five sets as she finished the night with 15 kills and three attack errors on 52 swings (.231%).

### ACED IT: 17 ACES AT #16 MINNESOTA

- The team's 17 service aces included five in the fifth set. Three came during libero Julia Kane's serving tear, which was a career-high.
- Raven Colvin tied a program record in five-set matches with her seven service aces.
- Freshman Ryan McAleer generated six aces, the third freshman in Purdue history, including the only one this century to do so (joining Lauri Grimes and Brooke White, both accomplished in 1993).
- The Boilermakers' 17 aces were the most by any team in the nation last week and are the most by a Big Ten team this season.

### SMOOTH & STEADY: SETTER TAYLOR ANDERSON

- She leads not only all Big Ten setters with 67 blocks this season (second-most is 48 by USC's Mia Tuaniga), but **all setters at Power 4 programs**. In perspective, Anderson also owns more blocks than Big Ten middles Andi Jackson (Nebraska), Taylor Trammell (Penn State), and Devyn Robinson, Carter Booth and Anna Smrek (Wisconsin).
- Anderson has set Purdue to seven matches over .300%, including .311% at #2 Nebraska, .310 vs. #10 Kentucky and .450 vs. UC Davis.
- Anderson has gotten more aggressive on the attack compared to her freshman season, averaging .60 kills per set compared to .31 from last season (35 kills in 2023 vs. 34 in 2024). In fact, her numbers are up in virtually every category including digs per set (1.97 vs. 2.27), assists per set (9.88 vs. 10.80) and blocks (.85 vs. .96).
- She set a season-high 13 digs alongside 47 assists in the four-set victory at Northwestern (10/4).
- Has posted 7 or more blocks four times this season (last: 7 at #2 Nebraska)
- 40 or more assist in a match this season: 10
- 45 or more assists in a match this season: 7
- 50 or more assists in a match this season: 4
- Double-doubles this season: 8 (including five of the last seven matches)

### ON A MISSION: RAVEN COLVIN

- No player in DI** is taking care of business like Colvin for both hitting % and blocks, ranking #2 in blocks per set (1.71) and #28 in hitting % (.401). She led the nation in blocks for the first 4 straight weeks and ranked among the top-12 in hitting % until Week 7.
- For 12 of the last 14 matches, Colvin has hit .308% or higher.
- She set a **career-high 19 kills** at #16 Minnesota (9/28) alongside a Purdue 5-set record-tying 7 aces in a five-set match.
- She is hitting, blocking and serving more efficiently than ever before and leads the team in aces.
- Despite being halfway through the season, she has now recorded more aces than then entirety of the 2023 season (27 vs. 26).
- Colvin has **nearly doubled her hitting efficiency** compared to 2023: 404% vs. .280%.
- The senior is #2 in the nation in blocks per set (including #1 in the Big Ten) with 1.71 per set, which would set a program record if the season were to end today, while her .404 hitting % would rank #2 in Purdue single-season history. To put in perspective, the current season-record is .409% (First Team All-American Stephanie Lynch in 2008) and 1.63



- blocks per set (Taylor Trammell, 2020).
- She's hit **.440% or higher in eight of 10 consecutive matches (9/7-10/6)**.
- Colvin ranks #2 in Purdue history in both career total blocks and block assists. She is one of just two blockers in program history to post as many this century (last: record-holder Stephanie Lynch, 2005-08).
- She also ranks #2 in Purdue history and the only Boilermaker this century to record 1.38 career blocks per set (record holder: Donna Gill, 1.49 blocks/set, 1991-92). The Big Ten season record in blocks/set is record: 1.85 set in 1996.
- Named **Big Ten Defensive Player of the Week (9/16)** after back-to-back .571% performances, 7 blocks vs. #10 Kentucky and four vs. Houston.
- The Boiler has recorded three 10-block performances: 11 at #2 Nebraska, 10 vs. K-State and 10 at Utah State (9/7).
- Number of matches with one or fewer attack errors: 10
- Number of matches hitting .300 or above: 19
- Number of matches hitting .400 or above: 14
- Number of matches hitting .500 or above: 7
- Number of matches hitting .700 or above: 3
- Number of matches with six or more blocks: 11

#### THE BOILERMAKER FAITHFUL

- Purdue has reached its second straight complete season-sell-out after the two Mackey matches officially sold out on Friday (9/20).
- The first match sold out within 20 minutes of the general public on-sale (vs. USC, 11/23).
- The lower bowl for each of the Mackey Arena matches filled up with just John Purdue Club member purchases before it opened up to the general public on-sale.
- Within the first hour, there were three sellouts: USC, Michigan and Penn State. Within an hour and 20 minutes, there were four sellouts.
- Within two hours of on-sale, over 9,800 tickets were sold for the Wisconsin match. That is the equivalent of filling Hollo-way four times over.
- Only five matches had tickets left just two hours into on-sale.
- Every ticket for every match was sold last year, making 2023 a complete-season sell-out.
- The student section: The Block Party sold out its season tickets in 20 minutes. That is up from the 40 minutes it took in 2023 and just under two-hour mark in 2022.
- Fans looking for season tickets have had to join a waiting list for at least the last three years. Due to the high renewal rate, only two people were able to move off the wait list in 2023 to buy season tickets.

#### EVA HUDSON: A FORCE

- Hudson is averaging 4.31 kills per set, 2.44 digs per set and 4.72 points per set as a junior.
- Has set a Big Ten season-high hitting % in three of the last four matches, beginning with a .349 clip at #2 Nebraska (26-4-63), and most recently a .417 clip, the second-highest overall this season, vs. Indiana (17-2-36).
- She has posted a double-double in each week of Big Ten play, all of which have come on the road (at #2 Nebraska, at #16 Minnesota and Northwestern).
- At #2 Nebraska, went errorless and hit .500 (5-0-10) in Set 2, hit .500% in Set 3 (7-1-12) and errorless in Set 5 (7-0-18).
- Hudson went errorless in Set 2 vs. #10 Kentucky to help turn the tides, posting an 8-0-11 (.727) performance on the way to Purdue's 3-1 victory.
- Has posted at least one errorless set in every match this season.
- Went errorless for nearly the entire match at #10 Kansas until the very end, forfeiting one attack error with the score 20-20 in Set 4. She finished the match 17-1-53.
- Posted 15 kills over just two sets of action vs. #10 Kentucky and seven of Purdue's 15 points in Set 5 at #2 Nebraska.
- She is averaging a .268 clip, but hit over .400 in back-to-back matches over opening weekend.
- She's hit over .300 in 3 of 5 matches vs. top-10 foes, including just one error at Kansas.
- Hudson is on track to become Purdue's all-time leader in career kills/set (4.32 currently; record is 3.96).
- Last year, the 2023 AVCA Second Team All-America honoree ranked #1 in the Big Ten and #5 in the nation in kills (560) and #2 in the Big Ten, #12 in the nation in total points (605.5).
- She is the fastest Boilermaker to reach 1,000 career kills in the rally-scoring era and recorded more kills over her first two years than any Boilermaker to come through the program (1,075).
- Number of season / career double-doubles: 6 / 23
- Number of matches in season / career with 15+ kills: 13 / 59
- Number of matches in season / career with 20+ kills: 2 / 15
- Number of matches in season / career hitting .300% or above: 9 / 31
- Number of matches in season / career hitting .350% or above: 5 / 18
- Number of matches in season / career hitting .400% or above: 3 / 11
- Number of errorless sets in season: 26

#### RECORD BOOK WATCH

- Colvin is 58 block assists away from setting a new Purdue career record, 91 total blocks away from setting a new Purdue career record and 117 kills away from reaching 1,000.
- Colvin is on track to set the Purdue single-season program record for blocks per set (1.67). Meanwhile, if the season were to end today, she'd set a Purdue single-season record with her .415 hitting % (current: .409% by Stephanie Lynch, 2008).

#### The Last Time....

##### A Match Went to 5 Sets

Oct. 17, 2024 vs. UCLA  
W, 3-2 (23-25, 27-25, 25-20, 19-25, 15-11)

##### Last Victory over a Top-5 Team

Nov. 17, 2023 vs. #3 Wisconsin  
W, 3-2 (22-25, 25-19, 25-20, 12-25, 16-14)

##### Team Hitting % of .400 or Better

.450 | Sept. 1, 2024 vs. UC Davis | W, 3-0

##### 60 or More Team Kills

69 | Oct. 17, 2024 vs. UCLA | W, 3-2

##### 15 or More Total Team Blocks

16 | Oct. 17, 2024 | W, 3-2

##### 80 or More Team Digs

83 | Dec. 2, 2023 vs. Marquette | W, 3-1

##### 10 or More Team Aces

10 | Oct. 12, 2024 at Iowa | W, 3-1

#### Team Season-Highs

##### Total Kills

69 | Oct. 17 vs. UCLA

##### Hitting % in a Match

.450 | Sept. 1 vs. UC Davis

##### Hitting % in a Set

.538 (Set 2) | Sept. 5 vs. California

##### Total Digs

79 | Sept. 28 at #16 Minnesota

##### Total Blocks

17 | Sept. 7 vs. Utah State

##### Fewest Attack Errors

7 | Aug. 31 vs. UMBC

##### Lowest Opponent Hitting %

.065 | Sept. 7 vs. Utah St.

##### Total Attacks

169 | Oct. 17 vs. UCLA

##### Service Aces

17 | Sept. 28 at #16 Minnesota

#### Top Individual Performances: 2024 Season

Category	Purdue	Opponent
Points	29 (Colvin at #16 Minnesota, 9/28)	29 (Cheridyn Leverette, UCLA)
Kills	26 (Hudson at #2 Nebraska, 10/11)	22 (Cheridyn Leverette, UCLA)
Attacks	63 (Hudson at #2 Nebraska, 10/11)	54 (Merritt Beason, Nebraska)
Service Aces	7 (Colvin at #16 Minnesota, 9/28)	4 (Kamryn Gibadlo, Utah)
Total Blocks	11 (Colvin at #2 Nebraska, 10/11)	7 (twice, last: Hannah Whittingstall, Iowa)
Block Solos	3 (Colvin vs. Utah State, 9/7)	3 (Jess Mruzik, Penn State)
Block Assists	9 (twice by Colvin; last: at #2 Nebraska, 10/11)	7 (Hannah Whittingstall, Iowa)
Digs	24 (Hornung at #16 Minnesota, 9/28)	20 (last: Nalani Iosia, Michigan State)
Assists	54 (Anderson at #16 Minnesota, 9/28)	60 (Bergen Reilly, Nebraska)
Attack % (10 attempt, min.)	.733% (Colvin, 12-1-15 vs. UC Davis, 9/1)	.545% (Caroline Jurevicius, Penn State, 6-0-11)

## Purdue's Record When...

**3-Set Matches:** 8-1

**4-Set Matches:** 5-2

**5-Set Matches:** 2-1

**Team attack % is .200 or better:** 14-2

**Team attack % is .250 or better:** 11-1

**Team attack % is .300 or better:** 6-1

**10 or more team blocks:** 9-1

**After dropping Set 1:** 3-4

**After winning Set 1:** 11-0

**Trailing after Set 3:** 0-2

**Leading after Set 3:** 7-1

## Record By Class

**Seniors:** 85-31 (win %: 73%)

**Juniors:** 59-24 (win %: 71%)

**Sophomores:** 38-13 (win %: 75%)

**Freshmen:** 15-4 (win %: 79%)

## NCAA D1 Single-Match Attendance

Attendance	Match, Date
1. 15,084	Marquette at Wisconsin, 9/17
2. 14,876	Indiana at #10 Purdue, 10/19
3. 14,126	Nebraska at Louisville, 9/22
4. 14,035	Texas vs. Wisconsin, 9/1
14,035	Stanford vs. Minnesota, 9/1

## Undefeated Starts Under Shondell

- 2011 (14-0)
- 2018 (11-0)
- 2005 (11-0)
- 2024 (8-0)**
- 2017 (7-0)
- 2014 (7-0)
- 2008 (7-0)

## Purdue Career Total Blocks

Name	TB	Years
1. Stephanie Lynch	660	2005-08
<b>2. Raven Colvin</b>	<b>572</b>	<b>2021-</b>
3. Marianne Smith	567	1982-85
4. Kate Crandell	563	1981-84
5. KiKi Jones	510	2011-14

## Purdue Career Block Assists

Name	TB	Years
1. Stephanie Lynch	550	2005-08
<b>2. Raven Colvin</b>	<b>500</b>	<b>2021-</b>
3. KiKi Jones	454	2011-14
4. Grace Cleveland	423	201-21
5. Kristen Arthurs	403	2007-10

## CHLOE CHICOINE: YEAR 2

- Went errorless for the entire match vs. Indiana, recording 12 kills, 0 errors on 30 attacks for a Big Ten season-high .400 hitting % in addition to recording her 11th double-double of the season (12 digs).
- Has reached double-digit kills in 16 of 19 matches this season.
- She is averaging 3.29 kills per set, 2.59 digs per set and 3.64 points per set as a sophomore.
- Set a season-high 22 kills (22-4-55) on a then-Big Ten-season-high .327 clip at #2 Nebraska.
- Led the team in the season-opener vs. K-State with 17 kills.
- Led the team in both kills (11) and digs (10) vs. Houston (9/13).
- Posted a season-high 15 digs vs. Cal (9/5).
- The 5-10 hitter has recorded a block in the last six consecutive matches.
- Recorded a career-high four blocks (2 solo, 2 assisted) alongside 14 kills at a .310 clip at Utah State (9/7).
- Was named Player of the Week once and Big Ten Freshman of the Week five times last season, including a Week 7 performance in which she earned Freshman of the Week after leading the entire Big Ten, Pac-12 and ACC in points per set (5.63).
- Chicoine produced in the biggest matches last season, hitting .359% vs. #2 Nebraska with 18 kills and just four errors on 39 swings. At #11 Penn State, the freshman recorded a Big Ten season-high 20 kills with her second-highest hitting % of the year with a .405 clip in the match, including an errorless six kills on nine attacks (.667%) to seal the win in Set 4. She went on to best her kills at home vs. Penn State, totaling a career-high 27 kills. Moreover, vs. Minnesota, she recorded just one error in the match with a .333 hitting % with 11 kills and six digs. Against #3 Wisconsin, she obliterated her previous career-high of 14 digs, totaling 23 in the win.
- Number of season / career double-doubles: 10 / 20
- Number of matches in season / career with 15+ kills: 4 / 20
- Number of matches in season / career with 20+ kills: 1 / 6
- Number of matches in season / career with 10+ digs: 11 / 20
- Number of errorless sets in season / career: 19 / 57

## MOST IMPROVED PLAYER: RIGHT SIDE KENNA WOLLARD

- The sophomore has set career-highs in nearly every statistical category this season including kills (18 at Northwestern, 10/4/24), blocks (5 vs. Houston, 9/13/24) and hitting %.
- She led the team in Week 6 (at Northwestern and vs. Michigan State) in kills per set (.371) and led outside hitters in efficiency (.385%).
- Already she has more than doubled the number of kills produced compared to last season: 57 in 2023 vs. 118 in 2024, despite playing in seven less matches.
- Number of matches hitting .300 or better this season: 9
- Number of matches hitting .400 or better this season: 3
- Number of matches hitting .450 or better this season: 2

## HUDSON NAMED AVCA NATIONAL PLAYER OF THE WEEK: W1

- The Stacey Clark Classic MVP led the league with 46 kills and 50.5 points.
- Averaged 4.60 kills per set
- Hit over .430 in back-to-back matches (.467% vs. UMBC and .433 vs. UC Davis)
- Recorded just one attack error vs. UMBC (8/31)
- Posted a double-double in the season-opener vs. K-State, recording 16 kills, 12 digs and a career-high-tying 5 blocks, which were the most since her freshman season.
- Was one dig shy of her second double-double of the season with her 15-kill, 9 dig performance vs. UC Davis.

## BIG TEN CO-DEFENSIVE PLAYER OF THE WEEK (10/7): ALI HORNUNG

- Libero Ali Hornung received her first career Big Ten weekly honor as Co-Defensive Player of the Week.
- Over the last three matches, she's totaled 64 digs and leads the team with 5.33 digs per set.
- Posted 18 digs and a perfect reception % after 27 attempts at Northwestern.
- Recorded 22 digs vs. Michigan State in the three-set win, a performance that included 10 digs in Set 1 alone.
- Knocked on the door of a double-double with 10 digs, 7 assists vs. #10 Kentucky.
- Eva Hudson is averaging 3.00 digs per set, second-most on the team.

## HC DAVE SHONDELL & COACHING STAFF

- In the 2024 calendar year, Dave Shondell began it with a four-year contract extension running through the 2027 season and has now reached GOAT status as the all-time winningest head coach in program history (470 wins).
- Under Shondell's guidance, Purdue has won 12 matches vs. top-5 opponents in the last 13 years.
- Led Purdue to a 125-46 record over the last five years alone.
- On the national stage, he is one of seven active coaches to lead a program for at least 21 years and one of seven with as many wins in the Power 4 (470 wins)
- In the last 21 seasons, Shondell has led the team to 18 NCAA tournament appearances and a perfect 18-0 record in first round matches.
- Last season, Shondell coached one of the youngest squads in program history, leading them to a third-place Big Ten finish and an NCAA Regional Semifinal berth. Three Boilermakers received All-America nods while tying a Purdue record of six Big Ten postseason honors, including two unanimous selections.
- He owns a .670 winning % at Purdue and is one of three active Big Ten coaches to be at their institution for 10 years.
- He is one of eight head coaches in Big Ten history to produce as many wins and one of two active coaches, joined by John Cook. Moreover, Shondell is the only one of the two to produce those wins at the same institution (Cook: Wisconsin & Nebraska).
- Coaching Staff Updates For 2024:** Kathy Jewell (22nd season) was promoted to associate head coach - recruiting coordinator; John Klanac was hired as assistant coach in January; Ben Cutrone (previously the GA) was hired as volleyball analyst in May.
- John Klanac was previously at Rice and graduated from Ohio State, where he was a 2011 national champion.

## ANNIE DREWS INDUCTED TO THE PURDUE HALL OF FAME

- Two-time Olympian Annie Drews (2012-15) will be inducted to the Leroy Keyes Purdue Athletics Hall of Fame on Friday.
- A four-year letterwinner as an outside hitter, she was a gold medalist at the 2020 Tokyo Olympics, playing a key role in Team USA's historic run on the world stage and a silver medalist at the 2024 Paris Olympics as well as a regular with the U.S. Senior National Team.
- Before her international glory, she led the Boilermakers to three NCAA Tournament trips, including two Sweet 16s and one Elite Eight. Drews closed out her Purdue career with Second Team All-America honors in 2015 along with back-to-back First Team All-Big Ten accolades.
- She is the seventh volleyball player to be inducted to elite group, joining Ariel (Turner) Gebhardt (Class of 2020), Stephanie (Lynch) Harpenau (Class of 2018), Carol Dewey and Debbie (McDonald) West (Class of 2003), Marianne (Smith) Orr (Class of 1999) and Jane Neff (inaugural Class of 1994).

# PURDUE VOLLEYBALL

## 2024 ROSTER

No.	Name	Ht.	Pos.	Yr.	Hometown / High School / Last School
1	Rachel Williams	5-7	DS	RS-Fr.	West Lafayette, Ind. / West Lafayette
2	Chloe Chicoine	5-10	OH	So.	Lafayette, Ind. / McCutcheon
3	Ryan McAleer	5-6	DS	Fr.	Overland Park, Kan. / Blue Valley
4	Kenna Wollard	6-1	OH	So.	Dunlap, Ill. / Illinois Valley Central
5	Taylor Anderson	6-1	S	So.	San Antonio, Texas / Cornerstone Christian
6	Sienna Foster	5-9	DS	Fr.	Lafayette, Ind. / Benton Central
7	Raven Colvin	6-1	MB	Sr.	Indianapolis, Ind. / Heritage Christian
8	Raven Gray	6-1	OH/RS	Sr.	Charlotte, N.C. / Cox Mill / Winston-Salem State
9	Lourdès Myers	6-3	MB	RS-Sr.	Alliance, Ohio / St. Thomas Aquinas
10	Ali Hornung	5-10	DS/OH	Sr.	New Albany, Ind. / Providence
11	Allie Shondell	5-10	S	Fr.	Lafayette, Ind. / McCutcheon
14	Grace Heaney	6-2	OPP/RS	So.	Omaha, Neb. / Elkhorn North
15	Lizzie Carr	6-6	MB	RS-So.	West Chester, Pa. / West Chester East
17	Eva Hudson	6-1	OH	Jr.	Fort Wayne, Ind. / Bishop Dwenger
19	Sydney Yim	6-1	S	Sr.	Newburyport, Mass. / Newburyport
21	Julia Kane	5-11	DS	So.	Windermere, Fla. / Windermere Prep
22	Emily Rastovski	6-2	OH	Sr.	Valparaiso, Ind. / Morgan Township

**Head Coach:** Dave Shondell, 22nd season

**Associate Head Coach - Recruiting Coordinator:** Kathy Jewell, 22nd season

**Assistant Coach:** John Klanac, 1st season

**Assistant Coach:** Michael Bouril, 2nd season | 5th overall at Purdue

**Supervisor of Volleyball Operations:** Carrie Gurnell, 4th season

**Volleyball Analyst:** Ben Cutrone, 1st season | 3rd overall at Purdue

**Graduate Assistant:** Owen Mahin, 1st season

### Pronunciation Guide

Chloe Chicoine: SHIH-coin (starts like Chicago)

Lourdès Myers: LORD-is

Ali Hornung: HORN-nung

Ryan McAleer: MAC-uh-leer

Eva Hudson: EE-va (think eve)

Emily Rastovski: RAZ-taw-v-skee

John Klanac: Klan-ICK

Michael Bouril: BURR-ill

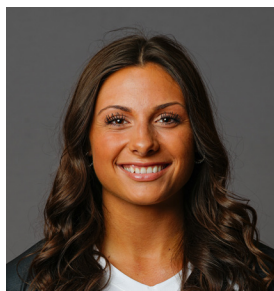




# 2024 PURDUE VOLLEYBALL ROSTER



**#1 Rachel Williams**  
R-Fr. | DS | 5-7 | West Lafayette, Ind.



**#2 Chloe Chicoine**  
So. | OH | 5-10 | Lafayette, Ind.



**#3 Ryan McAleer**  
Fr. | DS | 5-6 | Overland Park, Kan.



**#4 Kenna Wollard**  
So. | OH | 6-1 | Dunlap, Ill.



**#5 Taylor Anderson**  
So. | S | 6-1 | San Antonio, Texas



**#6 Sienna Foster**  
Fr. | DS | 5-9 | West Lafayette, Ind



**#7 Raven Colvin**  
Sr. | MB | 6-1 | Indianapolis, Ind.



**#8 Raven Gray**  
Sr. | OH/RS | 6-1 | Charlotte, N.C.



**#9 Lourdes Myers**  
RS-Sr. | MB | 6-3 | Alliance, Ohio



**#10 Ali Hornung**  
Sr. | DS/OH | 5-10 | New Albany, Ind.



**#11 Allie Shondell**  
Fr. | S | 5-10 | Lafayette, Ind.



**#14 Grace Heaney**  
So. | OPP/RS | 6-2 | Omaha, Neb.



**#15 Lizzie Carr**  
RS-So. | MB | 6-6 | West Chester, Pa.



**#17 Eva Hudson**  
Jr. | OH | 6-1 | Fort Wayne, Ind.



**#19 Sydney Yim**  
Sr. | S | 6-1 | Newburyport, Mass.



**#21 Julia Kane**  
So. | DS | 5-11 | Windermere, Fla.



**#22 Emily Rastovski**  
RS-Jr. | OH | 6-2 | Valparaiso, Ind.



**Graduate Assistant**  
Owen Mahin | 1st Season



**Volleyball Analyst**  
Ben Cutrone | 1st Season



**Head Coach**  
**Dave Shondell**  
22nd Season



**Assoc. Head Coach**  
**& Recruiting Coordinator**  
**Kathy Jewell**  
22nd Season



**Assistant Coach**  
**Michael Bouril**  
5th Season



**Assistant Coach**  
**John Klanac**  
1st Season



**Director of Operations**  
**Carrie Gurnell**  
4th Season





# 2024-25 Purdue Women's Volleyball Combined Team Statistics All games

Page 1/1  
as of Oct 20, 2024

## Game Records

Overall	Conference	Home	Away	Neutral
15 - 4	6 - 2	6 - 1	5 - 2	4 - 1

## Team Box Score

		Attack						Set		Serve				Dig		Blocking							
##	Player	SP	K	K/S	E	TA	PCT	A	A/S	SA	SE	SA/S	RE	DIG	DIG/S	BS	BA	TOT/S	BLK/S	BE	BHE	PTS	
1	Williams, Rachel	39	1	0.03	0	3	.333	1	0.03	7	11	0.18	0	9	0.23	0	0	0	0.00	0	0	8.0	
2	Chicoine, Chloe	70	230	3.29	81	696	.214	26	0.37	13	23	0.19	7	181	2.59	2	20	22	0.31	3	0	255.0	
3	McAleer, Ryan	69	2	0.03	1	4	.250	21	0.30	14	25	0.20	13	157	2.28	0	0	0	0.00	0	0	16.0	
4	Wollard, Kenna	65	118	1.82	46	288	.250	1	0.02	0	0	0.00	0	29	0.45	1	37	38	0.58	7	0	137.5	
5	Anderson, Taylor	70	42	0.60	11	106	.292	756	10.80	18	26	0.26	1	159	2.27	5	62	67	0.96	2	3	96.0	
7	Colvin, Raven	70	183	2.61	49	332	.404	4	0.06	27	39	0.39	1	37	0.53	18	96	114	1.63	11	0	276.0	
8	Gray, Raven	1	1	1.00	0	1	1.000	0	0.00	0	0	0.00	0	0	0.00	0	0	0	0.00	0	0	1.0	
9	Myers, Lourdes	66	68	1.03	17	146	.349	2	0.03	0	0	0.00	1	18	0.27	7	60	67	1.02	20	0	105.0	
10	Hornung, Ali	70	0	0.00	0	4	.000	63	0.90	4	5	0.06	18	272	3.89	0	1	1	0.01	0	0	4.5	
11	Shondell, Allie	3	0	0.00	1	1	-1.000	11	3.67	0	1	0.00	0	1	0.33	0	3	3	1.00	0	0	1.5	
15	Carr, Lizzie	15	23	1.53	5	51	.353	0	0.00	0	0	0.00	0	1	0.07	1	8	9	0.60	1	0	28.0	
17	Hudson, Eva	70	302	4.31	75	800	.284	8	0.11	10	16	0.14	16	171	2.44	2	33	35	0.50	3	0	330.5	
19	Yim, Sydney	1	0	0.00	0	0	.000	1	1.00	0	0	0.00	0	0	0.00	0	0	0	0.00	0	0	0.0	
21	Kane, Julia	49	0	0.00	0	0	.000	8	0.16	11	23	0.22	1	23	0.47	0	0	0	0.00	0	0	11.0	
PURDUE		70	970	13.86	286	2432	.281	902	12.89	104	169	1.49	69	1058	15.11	36	320	196	2.80	47	3	1,270.0	
Opponents		70	906	12.94	404	2565	.196	840	12.00	69	156	0.99	104	998	14.26	19	211	124.5	1.78	30	5	1,099.5	

## Team statistics

	PURDUE	OPP
ATTACK		
Kills	970	906
Errors	286	404
Total Attacks	2432	2565
Attack Pct	.281	.196
Kills/Set	13.86	12.94
SET		
Assists	902	840
Attempts	2370	2488
Assist Pct	.381	.338
Assists/Set	12.89	12.00
SERVE		
Aces	104	69
Errors	169	156
Attempts	1648	1455
Serve Pct	.897	.893
Aces/Set	1.49	0.99
SERVE RECEPTIONS		
Errors	69	104
Errors/Set	0.99	1.49
Attempts	1299	1479
Reception Pct	.947	.999
DEFENSE		
Digs	1058	998
Digs/Set	15.11	14.26
BLOCKING		
Block solo	36	19
Block Assist	320	211
Total Blocks	196	124.5
Blocks/Set	2.80	1.78
Block Errors	47	30
Ball handling errors	3	5
ATTENDANCE		
Total	29366	22670
Dates/Avg Per Date	7/4195	7/3239
Neutral Site #/Avg	5/904	-
Current win streak	0	-
Home win streak	0	-

## Team Results

Date	Opponent	Score	Score-by-set	Att.
08/30/2024	Kansas St.	W 3-1	25-21,18-25,25-22,25-23	2415
08/31/2024	UMBC	W 3-0	25-20,25-20,25-17	2415
09/01/2024	UC Davis	W 3-0	25-18,25-19,25-18	2415
09/05/2024	vs California	W 3-1	29-27,25-12,18-25,25-23	52
09/06/2024	at Utah	W 3-0	29-27,25-20,25-13	3766
09/07/2024	at Utah St.	W 3-0	25-18,25-16,25-22	1029
09/13/2024	vs Houston	W 3-0	25-12,25-21,25-20	891
09/14/2024	vs Kentucky	W 3-1	21-25,25-13,25-23,25-16	1883
09/19/2024	at Kansas	L 1-3	29-31,25-21,22-25,23-25	1640
09/20/2024	vs Creighton	L 1-3	21-25,25-17,16-25,25-27	1696
09/21/2024	vs Tulsa	W 3-0	25-21,25-17,25-10	0
* 09/25/2024	Penn St.	L 0-3	14-25,21-25,20-25	2415
* 09/28/2024	at Minnesota	W 3-2	26-24,23-25,25-20,23-25,15-10	4866
* 10/04/2024	at Northwestern	W 3-1	23-25,25-20,25-16,29-27	1618
* 10/06/2024	Michigan St.	W 3-0	25-19,25-22,25-18	2415
* 10/11/2024	at Nebraska	L 2-3	22-25,25-22,25-23,22-25,15-17	8715
* 10/12/2024	at Iowa	W 3-1	25-17,19-25,25-18,25-21	1036
* 10/17/2024	UCLA	W 3-2	23-25,27-25,25-20,19-25,15-11	2415
* 10/19/2024	Indiana	W 3-0	25-18,25-14,25-9	14876



2024-25 Purdue Women's Volleyball  
Individual Match-by-Match  
All games

Page 1/14  
as of Oct 20, 2024

#1 WILLIAMS, Rachel

			Attack				Set			Serve				Recept				Blocking				Team			
Date	Opponent	SP	K	E	TA	PCT	A	TA	PCT	SA	SE	TA	PCT	RE	TA	PCT	DIG	BS	BA	BE	TOTAL	BHE	POINTS	HIT%	SCORE
08/31/2024	UMBC	2	0	0	0	.000	0	0	.000	1	0	10	1.000	0	0	.000	4	0	0	0	0.0	0	1.0	.371	3-0
09/01/2024	UC Davis	3	0	0	0	.000	0	0	.000	0	1	11	.909	0	0	.000	0	0	0	0	0.0	0	0.0	.450	3-0
09/05/2024	vs California	3	1	0	1	1.000	0	0	.000	0	1	10	.900	0	0	.000	1	0	0	0	0.0	0	1.0	.235	3-1
09/06/2024	at Utah	2	0	0	0	.000	0	0	.000	1	1	3	.667	0	0	.000	1	0	0	0	0.0	0	1.0	.246	3-0
09/07/2024	at Utah St.	1	0	0	0	.000	0	0	.000	0	0	1	1.000	0	0	.000	0	0	0	0	0.0	0	0.0	.290	3-0
09/13/2024	vs Houston	1	0	0	0	.000	0	0	.000	1	0	2	1.000	0	0	.000	0	0	0	0	0.0	0	1.0	.292	3-0
09/14/2024	vs Kentucky	4	0	0	0	.000	0	0	.000	0	1	4	.750	0	0	.000	0	0	0	0	0.0	0	0.0	.310	3-1
09/19/2024	at Kansas	3	0	0	0	.000	0	0	.000	0	0	4	1.000	0	0	.000	0	0	0	0	0.0	0	0.0	.278	1-3
09/20/2024	vs Creighton	3	0	0	1	.000	1	2	.500	1	2	15	.867	0	0	.000	2	0	0	0	0.0	0	1.0	.209	1-3
09/21/2024	vs Tulsa	2	0	0	0	.000	0	0	.000	1	0	6	1.000	0	0	.000	1	0	0	0	0.0	0	1.0	.365	3-0
09/25/2024	Penn St.	1	0	0	1	.000	0	0	.000	0	0	1	1.000	0	0	.000	0	0	0	0	0.0	0	0.0	.176	0-3
09/28/2024	at Minnesota	3	0	0	0	.000	0	0	.000	0	0	3	1.000	0	0	.000	0	0	0	0	0.0	0	0.0	.252	3-2
10/04/2024	at Northwestern	1	0	0	0	.000	0	0	.000	0	1	1	.000	0	0	.000	0	0	0	0	0.0	0	0.0	.287	3-1
10/06/2024	Michigan St.	2	0	0	0	.000	0	0	.000	0	0	4	1.000	0	0	.000	0	0	0	0	0.0	0	0.0	.252	3-0
10/11/2024	at Nebraska	5	0	0	0	.000	0	0	.000	0	4	12	.667	0	0	.000	0	0	0	0	0.0	0	0.0	.311	2-3
10/19/2024	Indiana	3	0	0	0	.000	0	0	.000	2	0	5	1.000	0	0	.000	0	0	0	0	0.0	0	2.0	.333	3-0
Totals		39	1	0	3	.333	1	2	.500	7	11	92	.880	0	0	.000	9	0	0	0	0.0	0	8.0		

Player Averages

Sets Played	Kills per set	Assists per set	Service aces per set	Digs per set	Blocks per set	Points per set
39	0.03	0.03	0.18	0.23	0.00	0.21



2024-25 Purdue Women's Volleyball  
Individual Match-by-Match  
All games

Page 2/14  
as of Oct 20, 2024

#2 CHICOINE, Chloe

Date	Opponent	SP	Attack				Set			Serve				Recept			Blocking					Team			
			K	E	TA	PCT	A	TA	PCT	SA	SE	TA	PCT	RE	TA	PCT	DIG	BS	BA	BE	TOTAL	BHE	POINTS	HIT%	SCORE
08/30/2024	Kansas St.	*4	17	6	52	.212	0	4	.000	0	1	17	.941	2	12	.833	6	0	1	0	1.0	0	17.5	.234	3-1
08/31/2024	UMBC	*3	11	2	33	.273	2	5	.400	1	3	9	.667	0	14	1.000	11	0	1	0	1.0	0	12.5	.371	3-0
09/01/2024	UC Davis	*3	9	2	26	.269	4	5	.800	1	2	16	.875	0	12	1.000	5	0	0	1	0.0	0	10.0	.450	3-0
09/05/2024	vs California	*4	10	6	36	.111	0	3	.000	1	1	21	.952	0	10	1.000	15	0	1	0	1.0	0	11.5	.235	3-1
09/06/2024	at Utah	*3	8	4	31	.129	1	3	.333	1	0	23	1.000	0	2	1.000	13	0	0	0	0.0	0	9.0	.246	3-0
09/07/2024	at Utah St.	*3	14	5	29	.310	0	2	.000	0	0	10	1.000	0	19	1.000	8	2	2	0	4.0	0	17.0	.290	3-0
09/13/2024	vs Houston	*3	11	4	27	.259	0	3	.000	2	1	21	.952	0	13	1.000	10	0	3	0	3.0	0	14.5	.292	3-0
09/14/2024	vs Kentucky	*4	10	3	32	.219	0	5	.000	1	0	22	1.000	0	4	1.000	9	0	2	0	2.0	0	12.0	.310	3-1
09/19/2024	at Kansas	*4	16	3	39	.333	2	5	.400	1	2	24	.917	1	15	.933	12	0	0	0	0.0	0	17.0	.278	1-3
09/20/2024	vs Creighton	*4	14	8	44	.136	1	8	.125	0	0	15	1.000	1	18	.944	6	0	0	1	0.0	0	14.0	.209	1-3
09/21/2024	vs Tulsa	*3	10	2	23	.348	2	6	.333	0	1	17	.941	1	4	.750	6	0	2	0	2.0	0	11.0	.365	3-0
09/25/2024	Penn St.	*3	10	5	29	.172	1	4	.250	0	2	11	.818	1	12	.917	11	0	0	0	0.0	0	10.0	.176	0-3
09/28/2024	at Minnesota	*5	14	8	48	.125	1	7	.143	0	2	19	.895	0	8	1.000	11	0	0	0	0.0	0	14.0	.252	3-2
10/04/2024	at Northwestern	*4	10	3	33	.212	1	9	.111	1	2	19	.895	0	26	1.000	3	0	2	0	2.0	0	12.0	.287	3-1
10/06/2024	Michigan St.	*3	10	6	41	.098	0	1	.000	3	2	17	.882	0	9	1.000	13	0	1	0	1.0	0	13.5	.252	3-0
10/11/2024	at Nebraska	*5	22	4	55	.327	5	9	.556	0	1	26	.962	0	5	1.000	13	0	1	0	1.0	0	22.5	.311	2-3
10/12/2024	at Iowa	*4	7	7	36	.000	1	1	1.000	1	1	20	.950	1	20	.950	6	0	1	0	1.0	0	8.5	.213	3-1
10/17/2024	UCLA	*5	15	3	52	.231	4	8	.500	0	1	14	.929	0	10	1.000	13	0	2	1	2.0	0	16.0	.325	3-2
10/19/2024	Indiana	*3	12	0	30	.400	1	4	.250	0	1	10	.900	0	0	.000	10	0	1	0	1.0	0	12.5	.333	3-0
Totals		70	230	81	696	.214	26	92	.283	13	23	331	.931	7	213	.967	181	2	20	3	22.0	0	255.0		

Player Averages

Sets Played	Kills per set	Assists per set	Service aces per set	Digs per set	Blocks per set	Points per set
70	3.29	0.37	0.19	2.59	0.31	3.64





2024-25 Purdue Women's Volleyball  
Individual Match-by-Match  
All games

Page 3/14  
as of Oct 20, 2024

#3 MCALEER, Ryan

Date	Opponent	SP	Attack				Set			Serve				Recept			Blocking					Team			
			K	E	TA	PCT	A	TA	PCT	SA	SE	TA	PCT	RE	TA	PCT	DIG	BS	BA	BE	TOTAL	BHE	POINTS	HIT%	SCORE
08/30/2024	Kansas St.	*4	0	0	0	.000	0	2	.000	0	4	18	.778	0	19	1.000	11	0	0	0	0.0	0	0.0	.234	3-1
08/31/2024	UMBC	*2	0	0	0	.000	1	2	.500	0	0	10	1.000	2	12	.833	3	0	0	0	0.0	0	0.0	.371	3-0
09/01/2024	UC Davis	*3	0	0	0	.000	0	0	.000	0	0	8	1.000	0	16	1.000	5	0	0	0	0.0	0	0.0	.450	3-0
09/05/2024	vs California	*4	0	0	0	.000	0	1	.000	0	1	14	.929	3	32	.906	7	0	0	0	0.0	0	0.0	.235	3-1
09/06/2024	at Utah	*3	0	0	0	.000	1	3	.333	0	2	9	.778	0	4	1.000	7	0	0	0	0.0	0	0.0	.246	3-0
09/07/2024	at Utah St.	*3	0	0	0	.000	0	1	.000	1	1	16	.938	0	5	1.000	5	0	0	0	0.0	0	1.0	.290	3-0
09/13/2024	vs Houston	*3	0	0	0	.000	3	5	.600	1	0	8	1.000	0	15	1.000	6	0	0	0	0.0	0	1.0	.292	3-0
09/14/2024	vs Kentucky	*4	1	0	1	1.000	1	1	1.000	0	2	15	.867	0	18	1.000	11	0	0	0	0.0	0	1.0	.310	3-1
09/19/2024	at Kansas	*4	0	1	1	-1.000	1	2	.500	0	1	12	.917	0	5	1.000	10	0	0	0	0.0	0	0.0	.278	1-3
09/20/2024	vs Creighton	4	0	0	0	.000	1	2	.500	0	1	13	.923	1	18	.944	7	0	0	0	0.0	0	0.0	.209	1-3
09/21/2024	vs Tulsa	3	1	0	1	1.000	3	4	.750	0	2	12	.833	0	10	1.000	6	0	0	0	0.0	0	1.0	.365	3-0
09/25/2024	Penn St.	3	0	0	0	.000	0	0	.000	0	1	8	.875	0	3	1.000	5	0	0	0	0.0	0	0.0	.176	0-3
09/28/2024	at Minnesota	*5	0	0	0	.000	2	7	.286	6	3	30	.900	4	31	.871	10	0	0	0	0.0	0	6.0	.252	3-2
10/04/2024	at Northwestern	4	0	0	1	.000	1	4	.250	1	2	17	.882	1	11	.909	11	0	0	0	0.0	0	1.0	.287	3-1
10/06/2024	Michigan St.	3	0	0	0	.000	0	2	.000	0	2	13	.846	0	9	1.000	11	0	0	0	0.0	0	0.0	.252	3-0
10/11/2024	at Nebraska	*5	0	0	0	.000	2	4	.500	0	3	14	.786	0	14	1.000	13	0	0	0	0.0	0	0.0	.311	2-3
10/12/2024	at Iowa	*4	0	0	0	.000	2	2	1.000	1	0	13	1.000	1	11	.909	7	0	0	0	0.0	0	1.0	.213	3-1
10/17/2024	UCLA	*5	0	0	0	.000	3	6	.500	3	0	26	1.000	1	27	.963	7	0	0	0	0.0	0	3.0	.325	3-2
10/19/2024	Indiana	*3	0	0	0	.000	0	1	.000	1	0	8	1.000	0	17	1.000	15	0	0	0	0.0	0	1.0	.333	3-0
Totals		69	2	1	4	.250	21	49	.429	14	25	264	.905	13	277	.953	157	0	0	0	0.0	0	16.0		

Player Averages

Sets Played	Kills per set	Assists per set	Service aces per set	Digs per set	Blocks per set	Points per set
69	0.03	0.30	0.20	2.28	0.00	0.23



2024-25 Purdue Women's Volleyball  
Individual Match-by-Match  
All games

Page 4/14  
as of Oct 20, 2024

#4 WOLLARD, Kenna

Date	Opponent	SP	Attack				Set			Serve				Recept			Blocking					Team			
			K	E	TA	PCT	A	TA	PCT	SA	SE	TA	PCT	RE	TA	PCT	DIG	BS	BA	BE	TOTAL	BHE	POINTS	HIT%	SCORE
08/30/2024	Kansas St.	4	8	2	20	.300	0	0	.000	0	0	0	.000	0	0	.000	1	0	2	1	2.0	0	9.0	.234	3-1
09/01/2024	UC Davis	3	10	2	17	.471	0	0	.000	0	0	0	.000	0	1	1.000	1	0	2	1	2.0	0	11.0	.450	3-0
09/05/2024	vs California	4	11	2	24	.375	0	1	.000	0	0	0	.000	0	0	.000	3	0	3	2	3.0	0	12.5	.235	3-1
09/06/2024	at Utah	3	7	2	15	.333	0	0	.000	0	0	0	.000	0	0	.000	3	0	1	0	1.0	0	7.5	.246	3-0
09/07/2024	at Utah St.	3	5	2	10	.300	0	1	.000	0	0	0	.000	0	0	.000	0	0	2	0	2.0	0	6.0	.290	3-0
09/13/2024	vs Houston	2	3	3	13	.000	0	0	.000	0	0	0	.000	0	0	.000	3	0	5	0	5.0	0	5.5	.292	3-0
09/14/2024	vs Kentucky	4	6	2	13	.308	0	0	.000	0	0	0	.000	0	0	.000	2	0	1	0	1.0	0	6.5	.310	3-1
09/19/2024	at Kansas	4	9	7	22	.091	0	0	.000	0	0	0	.000	0	0	.000	0	0	2	0	2.0	0	10.0	.278	1-3
09/20/2024	vs Creighton	*4	3	3	13	.000	0	0	.000	0	0	0	.000	0	0	.000	1	1	1	1	2.0	0	4.5	.209	1-3
09/21/2024	vs Tulsa	*2	2	0	7	.286	0	1	.000	0	0	1	1.000	0	1	1.000	0	0	0	0	0.0	0	2.0	.365	3-0
09/25/2024	Penn St.	*3	4	3	17	.059	0	1	.000	0	0	0	.000	0	0	.000	2	0	1	0	1.0	0	4.5	.176	0-3
09/28/2024	at Minnesota	5	7	0	15	.467	0	6	.000	0	0	0	.000	0	0	.000	3	0	2	1	2.0	0	8.0	.252	3-2
10/04/2024	at Northwestern	*4	18	4	32	.438	0	2	.000	0	0	0	.000	0	0	.000	2	0	1	0	1.0	0	18.5	.287	3-1
10/06/2024	Michigan St.	*3	8	2	20	.300	0	2	.000	0	0	0	.000	0	0	.000	3	0	3	0	3.0	0	9.5	.252	3-0
10/11/2024	at Nebraska	5	7	2	17	.294	0	2	.000	0	0	0	.000	0	0	.000	1	0	4	1	4.0	0	9.0	.311	2-3
10/12/2024	at Iowa	4	8	5	20	.150	0	2	.000	0	0	0	.000	0	0	.000	1	0	4	0	4.0	0	10.0	.213	3-1
10/17/2024	UCLA	5	1	3	8	-.250	0	1	.000	0	0	0	.000	0	0	.000	1	0	2	0	2.0	0	2.0	.325	3-2
10/19/2024	Indiana	3	1	2	5	-.200	1	1	1.000	0	0	0	.000	0	1	1.000	2	0	1	0	1.0	0	1.5	.333	3-0
Totals		65	118	46	288	.250	1	20	.050	0	0	1	1.000	0	3	1.000	29	1	37	7	38.0	0	137.5		

Player Averages

Sets Played	Kills per set	Assists per set	Service aces per set	Digs per set	Blocks per set	Points per set
65	1.82	0.02	0.00	0.45	0.58	2.12



2024-25 Purdue Women's Volleyball  
Individual Match-by-Match  
All games

Page 5/14  
as of Oct 20, 2024

#5 ANDERSON, Taylor

Date	Opponent	SP	Attack				Set			Serve				Recept			Blocking					Team			
			K	E	TA	PCT	A	TA	PCT	SA	SE	TA	PCT	RE	TA	PCT	DIG	BS	BA	BE	TOTAL	BHE	POINTS	HIT%	SCORE
08/30/2024	Kansas St.	*4	0	1	2	.500	43	109	.394	1	1	13	.923	0	0	.000	7	0	8	0	8.0	0	5.0	.234	3-1
08/31/2024	UMBC	*3	3	0	4	.750	34	76	.447	0	2	8	.750	0	0	.000	5	0	3	0	3.0	0	4.5	.371	3-0
09/01/2024	UC Davis	*3	1	0	3	.333	45	78	.577	2	2	11	.818	0	0	.000	9	1	1	0	2.0	0	4.5	.450	3-0
09/05/2024	vs California	*4	1	1	3	.000	52	118	.441	3	2	20	.900	0	1	1.000	11	0	2	0	2.0	0	5.0	.235	3-1
09/06/2024	at Utah	*3	3	0	5	.600	34	85	.400	0	1	14	.929	0	0	.000	10	0	7	0	7.0	0	6.5	.246	3-0
09/07/2024	at Utah St.	*3	0	0	1	.000	29	69	.420	0	2	10	.800	0	0	.000	3	0	2	1	2.0	0	1.0	.290	3-0
09/13/2024	vs Houston	*3	4	0	7	.571	31	70	.443	0	1	10	.900	0	2	1.000	7	1	1	0	2.0	0	5.5	.292	3-0
09/14/2024	vs Kentucky	*4	2	0	6	.333	28	86	.326	2	1	15	.933	0	0	.000	8	0	4	0	4.0	0	6.0	.310	3-1
09/19/2024	at Kansas	*4	2	0	7	.286	49	128	.383	1	2	17	.882	0	0	.000	11	0	7	0	7.0	2	6.5	.278	1-3
09/20/2024	vs Creighton	*4	2	0	7	.286	44	124	.355	1	2	13	.846	0	0	.000	9	0	5	0	5.0	0	5.5	.209	1-3
09/21/2024	vs Tulsa	*3	2	2	10	.000	27	57	.474	0	1	7	.857	0	0	.000	5	0	3	0	3.0	0	3.5	.365	3-0
09/25/2024	Penn St.	*3	0	1	5	-.200	29	84	.345	0	0	11	1.000	0	0	.000	2	0	1	0	1.0	0	0.5	.176	0-3
09/28/2024	at Minnesota	*5	3	3	9	.000	54	130	.415	1	0	14	1.000	0	0	.000	12	0	4	0	4.0	0	6.0	.252	3-2
10/04/2024	at Northwestern	*4	2	1	8	.125	47	111	.423	1	4	15	.733	0	0	.000	13	1	0	0	1.0	1	4.0	.287	3-1
10/06/2024	Michigan St.	*3	0	0	3	.000	37	101	.366	0	0	14	1.000	0	0	.000	8	0	2	0	2.0	0	1.0	.252	3-0
10/11/2024	at Nebraska	*5	3	0	4	.750	52	140	.371	1	3	18	.833	0	0	.000	10	1	6	1	7.0	0	8.0	.311	2-3
10/12/2024	at Iowa	*4	6	1	8	.625	42	110	.382	1	0	11	1.000	1	1	.000	7	0	0	0	0.0	0	7.0	.213	3-1
10/17/2024	UCLA	*5	7	1	12	.500	51	127	.402	1	0	18	1.000	0	0	.000	12	1	4	0	5.0	0	11.0	.325	3-2
10/19/2024	Indiana	*3	1	0	2	.500	28	68	.412	3	2	15	.867	0	0	.000	10	0	2	0	2.0	0	5.0	.333	3-0
Totals		70	42	11	106	.292	756	1871	.404	18	26	254	.898	1	4	.750	159	5	62	2	67.0	3	96.0		

Player Averages

Sets Played	Kills per set	Assists per set	Service aces per set	Digs per set	Blocks per set	Points per set
70	0.60	10.80	0.26	2.27	0.96	1.37





2024-25 Purdue Women's Volleyball  
Individual Match-by-Match  
All games

Page 6/14  
as of Oct 20, 2024

#7 COLVIN, Raven

			Attack				Set			Serve				Recept				Blocking					Team			
Date	Opponent	SP	K	E	TA	PCT	A	TA	PCT	SA	SE	TA	PCT	RE	TA	PCT	DIG	BS	BA	BE	TOTAL	BHE	POINTS	HIT%	SCORE	
08/30/2024	Kansas St.	*4	7	3	14	.286	0	4	.000	3	4	18	.778	0	2	1.000	1	1	9	0	10.0	0	15.5	.234	3-1	
08/31/2024	UMBC	*3	7	3	13	.308	0	1	.000	0	2	9	.778	0	0	.000	1	0	5	2	5.0	0	9.5	.371	3-0	
09/01/2024	UC Davis	*3	12	1	15	.733	0	0	.000	0	2	2	.000	1	1	.000	0	1	3	2	4.0	0	14.5	.450	3-0	
09/05/2024	vs California	*4	16	5	26	.423	0	0	.000	2	4	12	.667	0	0	.000	4	1	5	0	6.0	0	21.5	.235	3-1	
09/06/2024	at Utah	*3	3	2	11	.091	0	1	.000	1	1	9	.889	0	0	.000	2	0	9	0	9.0	0	8.5	.246	3-0	
09/07/2024	at Utah St.	*3	7	0	10	.700	1	2	.500	1	1	10	.900	0	0	.000	1	3	7	0	10.0	0	14.5	.290	3-0	
09/13/2024	vs Houston	*3	5	1	7	.571	0	1	.000	1	2	10	.800	0	0	.000	2	1	3	1	4.0	0	8.5	.292	3-0	
09/14/2024	vs Kentucky	*4	9	1	14	.571	1	2	.500	2	2	10	.800	0	0	.000	5	1	6	0	7.0	0	15.0	.310	3-1	
09/19/2024	at Kansas	*4	14	3	25	.440	0	1	.000	2	2	13	.846	0	0	.000	3	0	7	1	7.0	0	19.5	.278	1-3	
09/20/2024	vs Creighton	*4	8	1	15	.467	0	1	.000	0	1	7	.857	0	0	.000	1	1	5	0	6.0	0	11.5	.209	1-3	
09/21/2024	vs Tulsa	*3	7	1	13	.462	0	3	.000	2	1	7	.857	0	0	.000	1	2	7	1	9.0	0	14.5	.365	3-0	
09/25/2024	Penn St.	*3	6	2	13	.308	0	1	.000	1	2	13	.846	0	0	.000	3	0	1	1	1.0	0	7.5	.176	0-3	
09/28/2024	at Minnesota	*5	19	7	31	.387	0	2	.000	7	3	23	.870	0	0	.000	5	1	4	0	5.0	0	29.0	.252	3-2	
10/04/2024	at Northwestern	*4	14	3	24	.458	0	0	.000	0	1	12	.917	0	0	.000	1	1	2	1	3.0	0	16.0	.287	3-1	
10/06/2024	Michigan St.	*3	8	1	15	.467	0	2	.000	0	1	3	.667	0	0	.000	0	2	4	2	6.0	0	12.0	.252	3-0	
10/11/2024	at Nebraska	*5	5	5	20	.000	1	2	.500	0	3	3	.000	0	0	.000	0	2	9	0	11.0	0	11.5	.311	2-3	
10/12/2024	at Iowa	*4	12	4	23	.348	0	1	.000	4	2	16	.875	0	1	1.000	4	0	3	0	3.0	0	17.5	.213	3-1	
10/17/2024	UCLA	*5	17	2	27	.556	0	3	.000	1	4	11	.636	0	2	1.000	3	1	5	0	6.0	0	21.5	.325	3-2	
10/19/2024	Indiana	*3	7	4	16	.188	1	2	.500	0	1	1	.000	0	0	.000	0	0	2	0	2.0	0	8.0	.333	3-0	
Totals		70	183	49	332	.404	4	29	.138	27	39	189	.794	1	6	.833	37	18	96	11	114.0	0	276.0			

Player Averages

Sets Played	Kills per set	Assists per set	Service aces per set	Digs per set	Blocks per set	Points per set
70	2.61	0.06	0.39	0.53	1.63	3.94



2024-25 Purdue Women's Volleyball  
Individual Match-by-Match  
All games

Page 7/14  
as of Oct 20, 2024

#8 GRAY, Raven

			Attack				Set			Serve				Recept				Blocking					Team			
Date	Opponent	SP	K	E	TA	PCT	A	TA	PCT	SA	SE	TA	PCT	RE	TA	PCT	DIG	BS	BA	BE	TOTAL	BHE	POINTS	HIT%	SCORE	
08/31/2024	UMBC	1	1	0	1	1.000	0	1	.000	0	0	0	.000	0	0	.000	0	0	0	0	0.0	0	1.0	.371	3-0	
Totals			1	1	0	1	1.000	0	1	.000	0	0	0	.000	0	0	.000	0	0	0	0	0.0	0	1.0		

Player Averages

Sets Played	Kills per set	Assists per set	Service aces per set	Digs per set	Blocks per set	Points per set
1	1.00	0.00	0.00	0.00	0.00	1.00



2024-25 Purdue Women's Volleyball  
Individual Match-by-Match  
All games

Page 8/14  
as of Oct 20, 2024

#9 MYERS, Lourdes

Date	Opponent	SP	Attack				Set			Serve				Recept			Blocking					Team			
			K	E	TA	PCT	A	TA	PCT	SA	SE	TA	PCT	RE	TA	PCT	DIG	BS	BA	BE	TOTAL	BHE	POINTS	HIT%	SCORE
08/30/2024	Kansas St.	*4	4	1	9	.333	0	1	.000	0	0	0	.000	0	2	1.000	0	0	6	4	6.0	0	7.0	.234	3-1
08/31/2024	UMBC	*3	3	1	9	.222	0	0	.000	0	0	0	.000	0	0	.000	1	0	5	1	5.0	0	5.5	.371	3-0
09/01/2024	UC Davis	*3	6	1	9	.556	0	0	.000	0	0	0	.000	0	0	.000	2	1	1	0	2.0	0	7.5	.450	3-0
09/05/2024	vs California	*4	6	2	13	.308	0	1	.000	0	0	0	.000	0	2	1.000	0	0	4	1	4.0	0	8.0	.235	3-1
09/06/2024	at Utah	*3	2	1	7	.143	0	0	.000	0	0	0	.000	0	0	.000	1	0	2	2	2.0	0	3.0	.246	3-0
09/07/2024	at Utah St.	*2	2	1	3	.333	0	1	.000	0	0	0	.000	0	0	.000	1	1	0	0	1.0	0	3.0	.290	3-0
09/13/2024	vs Houston	*3	1	0	6	.167	0	1	.000	0	0	0	.000	0	3	1.000	1	1	7	1	8.0	0	5.5	.292	3-0
09/14/2024	vs Kentucky	*4	1	1	3	.000	0	1	.000	0	0	0	.000	0	0	.000	2	0	2	0	2.0	0	2.0	.310	3-1
09/19/2024	at Kansas	*1	1	1	4	.000	0	0	.000	0	0	0	.000	0	0	.000	0	0	1	3	1.0	0	1.5	.278	1-3
09/20/2024	vs Creighton	*4	5	1	12	.333	0	1	.000	0	0	0	.000	0	0	.000	2	0	2	2	2.0	0	6.0	.209	1-3
09/21/2024	vs Tulsa	*3	6	1	8	.625	0	0	.000	0	0	0	.000	0	1	1.000	0	0	2	0	2.0	0	7.0	.365	3-0
09/25/2024	Penn St.	*3	3	0	7	.429	0	0	.000	0	0	0	.000	0	0	.000	2	0	1	0	1.0	0	3.5	.176	0-3
09/28/2024	at Minnesota	*5	4	1	9	.333	0	1	.000	0	0	0	.000	0	1	1.000	1	0	4	2	4.0	0	6.0	.252	3-2
10/04/2024	at Northwestern	*4	4	1	9	.333	0	1	.000	0	0	0	.000	0	0	.000	2	0	3	3	3.0	0	5.5	.287	3-1
10/06/2024	Michigan St.	*3	5	0	9	.556	0	0	.000	0	0	0	.000	1	2	.500	1	0	5	0	5.0	0	7.5	.252	3-0
10/11/2024	at Nebraska	*5	5	1	8	.500	0	0	.000	0	0	0	.000	0	1	1.000	0	0	3	0	3.0	0	6.5	.311	2-3
10/12/2024	at Iowa	*4	5	1	8	.500	0	1	.000	0	0	0	.000	0	2	1.000	0	1	4	0	5.0	0	8.0	.213	3-1
10/17/2024	UCLA	*5	4	2	10	.200	1	1	1.000	0	0	0	.000	0	1	1.000	2	3	6	1	9.0	0	10.0	.325	3-2
10/19/2024	Indiana	*3	1	0	3	.333	1	1	1.000	0	0	0	.000	0	0	.000	0	0	2	0	2.0	0	2.0	.333	3-0
Totals		66	68	17	146	.349	2	11	.182	0	0	0	.000	1	15	.933	18	7	60	20	67.0	0	105.0		

Player Averages

Sets Played	Kills per set	Assists per set	Service aces per set	Digs per set	Blocks per set	Points per set
66	1.03	0.03	0.00	0.27	1.02	1.59





2024-25 Purdue Women's Volleyball  
Individual Match-by-Match  
All games

Page 9/14  
as of Oct 20, 2024

#10 HORNING, Ali

Date	Opponent	SP	Attack				Set			Serve				Recept			Blocking					Team			
			K	E	TA	PCT	A	TA	PCT	SA	SE	TA	PCT	RE	TA	PCT	DIG	BS	BA	BE	TOTAL	BHE	POINTS	HIT%	SCORE
08/30/2024	Kansas St.	4	0	0	0	.000	6	17	.353	1	0	14	1.000	4	36	.889	17	0	0	0	0.0	0	1.0	.234	3-1
08/31/2024	UMBC	3	0	0	0	.000	1	7	.143	0	0	15	1.000	2	10	.800	14	0	0	0	0.0	0	0.0	.371	3-0
09/01/2024	UC Davis	3	0	0	0	.000	3	11	.273	1	1	15	.933	0	9	1.000	18	0	0	0	0.0	0	1.0	.450	3-0
09/05/2024	vs California	4	0	0	0	.000	3	18	.167	0	0	3	1.000	1	16	.938	18	0	1	0	1.0	0	0.5	.235	3-1
09/06/2024	at Utah	3	0	0	0	.000	1	14	.071	1	0	9	1.000	1	36	.972	14	0	0	0	0.0	0	1.0	.246	3-0
09/07/2024	at Utah St.	3	0	0	0	.000	3	6	.500	0	0	6	1.000	0	18	1.000	8	0	0	0	0.0	0	0.0	.290	3-0
09/13/2024	vs Houston	3	0	0	0	.000	1	8	.125	0	0	0	.000	0	7	1.000	9	0	0	0	0.0	0	0.0	.292	3-0
09/14/2024	vs Kentucky	4	0	0	1	.000	7	14	.500	0	0	1	1.000	1	24	.958	10	0	0	0	0.0	0	0.0	.310	3-1
09/19/2024	at Kansas	4	0	0	0	.000	5	13	.385	0	0	1	1.000	0	42	1.000	14	0	0	0	0.0	0	0.0	.278	1-3
09/20/2024	vs Creighton	4	0	0	1	.000	3	9	.333	0	0	0	.000	0	20	1.000	15	0	0	0	0.0	0	0.0	.209	1-3
09/21/2024	vs Tulsa	3	0	0	0	.000	0	7	.000	0	0	2	1.000	1	21	.952	6	0	0	0	0.0	0	0.0	.365	3-0
09/25/2024	Penn St.	3	0	0	0	.000	1	3	.333	0	1	4	.750	0	18	1.000	11	0	0	0	0.0	0	0.0	.176	0-3
09/28/2024	at Minnesota	5	0	0	0	.000	3	14	.214	0	0	0	.000	1	38	.974	24	0	0	0	0.0	0	0.0	.252	3-2
10/04/2024	at Northwestern	4	0	0	1	.000	2	10	.200	0	0	0	.000	0	27	1.000	18	0	0	0	0.0	0	0.0	.287	3-1
10/06/2024	Michigan St.	3	0	0	0	.000	4	8	.500	0	0	0	.000	2	10	.800	22	0	0	0	0.0	0	0.0	.252	3-0
10/11/2024	at Nebraska	5	0	0	0	.000	6	12	.500	0	1	9	.889	2	51	.961	12	0	0	0	0.0	0	0.0	.311	2-3
10/12/2024	at Iowa	4	0	0	0	.000	2	12	.167	0	1	13	.923	0	21	1.000	17	0	0	0	0.0	0	0.0	.213	3-1
10/17/2024	UCLA	5	0	0	1	.000	7	17	.412	0	1	14	.929	3	43	.930	19	0	0	0	0.0	0	0.0	.325	3-2
10/19/2024	Indiana	3	0	0	0	.000	5	12	.417	1	0	14	1.000	0	16	1.000	6	0	0	0	0.0	0	1.0	.333	3-0
Totals		70	0	0	4	.000	63	212	.297	4	5	120	.958	18	463	.961	272	0	1	0	1.0	0	4.5		

Player Averages

Sets Played	Kills per set	Assists per set	Service aces per set	Digs per set	Blocks per set	Points per set
70	0.00	0.90	0.06	3.89	0.01	0.06



2024-25 Purdue Women's Volleyball  
Individual Match-by-Match  
All games

Page 10/14  
as of Oct 20, 2024

#11 SHONDELL, Allie

			Attack				Set			Serve				Recept			Blocking					Team			
Date	Opponent	SP	K	E	TA	PCT	A	TA	PCT	SA	SE	TA	PCT	RE	TA	PCT	DIG	BS	BA	BE	TOTAL	BHE	POINTS	HIT%	SCORE
08/31/2024	UMBC	1	0	0	0	.000	3	6	.500	0	1	2	.500	0	0	.000	0	0	0	0	0.0	0	0.0	.371	3-0
09/07/2024	at Utah St.	1	0	1	1	-1.000	3	8	.375	0	0	0	.000	0	0	.000	1	0	1	0	1.0	0	0.5	.290	3-0
09/21/2024	vs Tulsa	1	0	0	0	.000	5	8	.625	0	0	0	.000	0	0	.000	0	0	2	0	2.0	0	1.0	.365	3-0
Totals		3	0	1	1	-1.000	11	22	.500	0	1	2	.500	0	0	.000	1	0	3	0	3.0	0	1.5		

Player Averages

Sets Played	Kills per set	Assists per set	Service aces per set	Digs per set	Blocks per set	Points per set
3	0.00	3.67	0.00	0.33	1.00	0.50



2024-25 Purdue Women's Volleyball  
Individual Match-by-Match  
All games

Page 11/14  
as of Oct 20, 2024

#15 CARR, Lizzie

			Attack				Set			Serve				Recept				Blocking				Team			
Date	Opponent	SP	K	E	TA	PCT	A	TA	PCT	SA	SE	TA	PCT	RE	TA	PCT	DIG	BS	BA	BE	TOTAL	BHE	POINTS	HIT%	SCORE
08/31/2024	UMBC	3	6	0	15	.400	0	0	.000	0	0	0	.000	0	0	.000	0	0	4	0	4.0	0	8.0	.371	3-0
09/06/2024	at Utah	1	0	0	0	.000	0	0	.000	0	0	0	.000	0	0	.000	0	0	0	0	0.0	0	0.0	.246	3-0
09/07/2024	at Utah St.	2	2	0	5	.400	0	0	.000	0	0	0	.000	0	0	.000	0	1	2	0	3.0	0	4.0	.290	3-0
09/13/2024	vs Houston	1	3	0	3	1.000	0	1	.000	0	0	0	.000	0	0	.000	0	0	0	0	0.0	0	3.0	.292	3-0
09/19/2024	at Kansas	3	5	3	11	.182	0	2	.000	0	0	0	.000	0	1	1.000	0	0	1	1	1.0	0	5.5	.278	1-3
09/21/2024	vs Tulsa	2	5	1	10	.400	0	1	.000	0	0	0	.000	0	0	.000	1	0	1	0	1.0	0	5.5	.365	3-0
10/17/2024	UCLA	2	1	1	3	.000	0	0	.000	0	0	0	.000	0	0	.000	0	0	0	0	0.0	0	1.0	.325	3-2
10/19/2024	Indiana	1	1	0	4	.250	0	0	.000	0	0	0	.000	0	0	.000	0	0	0	0	0.0	0	1.0	.333	3-0
Totals		15	23	5	51	.353	0	4	.000	0	0	0	.000	0	1	1.000	1	1	8	1	9.0	0	28.0		

Player Averages

Sets Played	Kills per set	Assists per set	Service aces per set	Digs per set	Blocks per set	Points per set
15	1.53	0.00	0.00	0.07	0.60	1.87



2024-25 Purdue Women's Volleyball  
Individual Match-by-Match  
All games

Page 12/14  
as of Oct 20, 2024

#17 HUDSON, Eva

Date	Opponent	SP	Attack				Set			Serve				Recept			Blocking					Team			
			K	E	TA	PCT	A	TA	PCT	SA	SE	TA	PCT	RE	TA	PCT	DIG	BS	BA	BE	TOTAL	BHE	POINTS	HIT%	SCORE
08/30/2024	Kansas St.	*4	16	5	48	.229	0	0	.000	0	1	12	.917	0	12	1.000	12	1	4	1	5.0	0	19.0	.234	3-1
08/31/2024	UMBC	*3	15	1	30	.467	0	4	.000	0	1	4	.750	1	8	.875	8	0	2	0	2.0	0	16.0	.371	3-0
09/01/2024	UC Davis	*3	15	2	30	.433	0	1	.000	0	1	11	.909	0	13	1.000	9	0	1	1	1.0	0	15.5	.450	3-0
09/05/2024	vs California	*4	14	7	50	.140	0	6	.000	0	1	16	.938	1	22	.955	8	0	4	0	4.0	0	16.0	.235	3-1
09/06/2024	at Utah	*3	18	4	45	.311	0	1	.000	3	0	11	1.000	3	10	.700	6	0	3	0	3.0	0	22.5	.246	3-0
09/07/2024	at Utah St.	*3	10	4	34	.176	0	0	.000	0	1	13	.923	1	7	.857	8	1	2	0	3.0	0	12.0	.290	3-0
09/13/2024	vs Houston	*3	10	3	26	.269	1	1	1.000	0	1	11	.909	0	7	1.000	6	0	1	0	1.0	0	10.5	.292	3-0
09/14/2024	vs Kentucky	*4	20	6	46	.304	1	3	.333	1	2	12	.833	1	11	.909	3	0	1	0	1.0	0	21.5	.310	3-1
09/19/2024	at Kansas	*4	17	1	53	.302	1	3	.333	0	0	14	1.000	1	25	.960	11	0	0	0	0.0	0	17.0	.278	1-3
09/20/2024	vs Creighton	*4	19	7	55	.218	0	3	.000	0	0	11	1.000	0	25	1.000	9	0	1	0	1.0	0	19.5	.209	1-3
09/21/2024	vs Tulsa	*3	11	2	24	.375	1	1	1.000	0	1	6	.833	0	5	1.000	4	0	1	1	1.0	0	11.5	.365	3-0
09/25/2024	Penn St.	*3	10	4	30	.200	0	1	.000	0	1	5	.800	1	31	.968	5	0	0	0	0.0	0	10.0	.176	0-3
09/28/2024	at Minnesota	*5	18	5	51	.255	1	4	.250	0	1	7	.857	2	17	.882	11	0	2	0	2.0	0	19.0	.252	3-2
10/04/2024	at Northwestern	*4	13	6	42	.167	0	5	.000	3	0	17	1.000	1	13	.923	16	0	2	0	2.0	0	17.0	.287	3-1
10/06/2024	Michigan St.	*3	11	2	35	.257	0	0	.000	0	1	11	.909	1	22	.955	9	0	3	0	3.0	0	12.5	.252	3-0
10/11/2024	at Nebraska	*5	26	4	63	.349	0	1	.000	0	2	19	.895	1	33	.970	15	0	1	0	1.0	0	26.5	.311	2-3
10/12/2024	at Iowa	*4	18	8	46	.217	2	3	.667	3	0	18	1.000	0	20	1.000	8	0	2	0	2.0	0	22.0	.213	3-1
10/17/2024	UCLA	*5	24	2	56	.393	0	2	.000	0	1	17	.941	2	15	.867	17	0	3	0	3.0	0	25.5	.325	3-2
10/19/2024	Indiana	*3	17	2	36	.417	1	1	1.000	0	1	3	.667	0	4	1.000	6	0	0	0	0.0	0	17.0	.333	3-0
Totals		70	302	75	800	.284	8	40	.200	10	16	218	.927	16	300	.947	171	2	33	3	35.0	0	330.5		

Player Averages

Sets Played	Kills per set	Assists per set	Service aces per set	Digs per set	Blocks per set	Points per set
70	4.31	0.11	0.14	2.44	0.50	4.72





2024-25 Purdue Women's Volleyball  
Individual Match-by-Match  
All games

Page 13/14  
as of Oct 20, 2024

#19 YIM, Sydney

			Attack				Set			Serve				Recept				Blocking				Team			
Date	Opponent	SP	K	E	TA	PCT	A	TA	PCT	SA	SE	TA	PCT	RE	TA	PCT	DIG	BS	BA	BE	TOTAL	BHE	POINTS	HIT%	SCORE
10/19/2024	Indiana	1	0	0	0	.000	1	2	.500	0	0	0	.000	0	0	.000	0	0	0	0	0.0	0	0.0	.333	3-0
Totals		1	0	0	0	.000	1	2	.500	0	0	0	.000	0	0	.000	0	0	0	0	0.0	0	0.0		

Player Averages

Sets Played	Kills per set	Assists per set	Service aces per set	Digs per set	Blocks per set	Points per set
1	0.00	1.00	0.00	0.00	0.00	0.00



2024-25 Purdue Women's Volleyball  
Individual Match-by-Match  
All games

Page 14/14  
as of Oct 20, 2024

#21 KANE, Julia

			Attack				Set			Serve				Recept			Blocking					Team			
Date	Opponent	SP	K	E	TA	PCT	A	TA	PCT	SA	SE	TA	PCT	RE	TA	PCT	DIG	BS	BA	BE	TOTAL	BHE	POINTS	HIT%	SCORE
08/31/2024	UMBC	2	0	0	0	.000	1	1	1.000	1	0	7	1.000	1	6	.833	1	0	0	0	0.0	0	1.0	.371	3-0
09/07/2024	at Utah St.	2	0	0	0	.000	0	0	.000	1	1	8	.875	0	0	.000	0	0	0	0	0.0	0	1.0	.290	3-0
09/13/2024	vs Houston	3	0	0	0	.000	0	0	.000	0	1	12	.917	0	0	.000	1	0	0	0	0.0	0	0.0	.292	3-0
09/14/2024	vs Kentucky	4	0	0	0	.000	1	1	1.000	1	2	17	.882	0	0	.000	3	0	0	0	0.0	0	1.0	.310	3-1
09/19/2024	at Kansas	4	0	0	0	.000	2	2	1.000	1	3	15	.800	0	0	.000	0	0	0	0	0.0	0	1.0	.278	1-3
09/20/2024	vs Creighton	4	0	0	0	.000	0	2	.000	0	1	14	.929	0	0	.000	3	0	0	0	0.0	0	0.0	.209	1-3
09/21/2024	vs Tulsa	3	0	0	0	.000	1	1	1.000	1	2	16	.875	0	0	.000	6	0	0	0	0.0	0	1.0	.365	3-0
09/25/2024	Penn St.	2	0	0	0	.000	0	1	.000	0	1	4	.750	0	0	.000	0	0	0	0	0.0	0	0.0	.176	0-3
09/28/2024	at Minnesota	5	0	0	0	.000	0	1	.000	3	2	15	.867	0	0	.000	2	0	0	0	0.0	0	3.0	.252	3-2
10/04/2024	at Northwestern	4	0	0	0	.000	2	2	1.000	1	4	20	.800	0	0	.000	0	0	0	0	0.0	0	1.0	.287	3-1
10/06/2024	Michigan St.	3	0	0	0	.000	0	2	.000	0	1	12	.917	0	0	.000	4	0	0	0	0.0	0	0.0	.252	3-0
10/11/2024	at Nebraska	5	0	0	0	.000	1	2	.500	0	2	9	.778	0	0	.000	0	0	0	0	0.0	0	0.0	.311	2-3
10/12/2024	at Iowa	1	0	0	0	.000	0	0	.000	0	0	2	1.000	0	0	.000	0	0	0	0	0.0	0	0.0	.213	3-1
10/17/2024	UCLA	4	0	0	0	.000	0	0	.000	0	2	8	.750	0	0	.000	1	0	0	0	0.0	0	0.0	.325	3-2
10/19/2024	Indiana	3	0	0	0	.000	0	0	.000	2	1	18	.944	0	0	.000	2	0	0	0	0.0	0	2.0	.333	3-0
Totals		49	0	0	0	.000	8	15	.533	11	23	177	.870	1	6	.833	23	0	0	0	0.0	0	11.0		

Player Averages

Sets Played	Kills per set	Assists per set	Service aces per set	Digs per set	Blocks per set	Points per set
49	0.00	0.16	0.22	0.47	0.00	0.22



Purdue Women's Volleyball  
Individual Career Summaries  
All games

Page 1/7  
as of Oct 20, 2024

**ANDERSON, Taylor**

SEASON	TEAM	SM-MP	K	K/S	E	TA	PCT	A	A/S	SA	SA/S	SE	DIG	D/S	RE	BS	BA	TB	B/S	BE	BHE	PTS	PTS/S
2023-24	Purdue	112-31	35	0.31	13	101	.218	1107	9.88	17	0.15	30	221	1.97	2	7	88	95	0.85	6	7	103.0	0.92
2024-25	Purdue	70-19	42	0.60	11	106	.292	756	10.80	18	0.26	26	159	2.27	1	5	62	67	0.96	2	3	96.0	1.37
<b>TOTAL</b>		<b>182 - 50</b>	<b>77</b>	<b>0.42</b>	<b>24</b>	<b>207</b>	<b>.256</b>	<b>1863</b>	<b>10.24</b>	<b>35</b>	<b>0.19</b>	<b>56</b>	<b>380</b>	<b>2.09</b>	<b>3</b>	<b>12</b>	<b>150</b>	<b>162</b>	<b>0.89</b>	<b>8</b>	<b>10</b>	<b>199.0</b>	<b>1.09</b>

**Single Game Highs**

Statistic	Value	
Kills	7	vs UCLA 10/17/24
Attacks	12	vs UCLA 10/17/24
Assists	60	vs Marquette 12/01/23
Serve Aces	3	vs Illinois 10/04/23, vs Indiana 10/19/24, vs California 09/05/24
Digs	16	vs Marquette 12/01/23
Blocks	8	vs Kansas St. 08/30/24
Block solos	1	12 times
Block assists	8	vs Kansas St. 08/30/24

**CARR, Lizzie**

SEASON	TEAM	SM-MP	K	K/S	E	TA	PCT	A	A/S	SA	SA/S	SE	DIG	D/S	RE	BS	BA	TB	B/S	BE	BHE	PTS	PTS/S
2023-24	Purdue	30-18	14	0.47	6	34	.235	0	0.00	0	0.00	0	2	0.07	1	0	8	8	0.27	1	0	18.0	0.60
2024-25	Purdue	15-8	23	1.53	5	51	.353	0	0.00	0	0.00	0	1	0.07	0	1	8	9	0.60	1	0	28.0	1.87
<b>TOTAL</b>		<b>45 - 26</b>	<b>37</b>	<b>0.82</b>	<b>11</b>	<b>85</b>	<b>.306</b>	<b>0</b>	<b>0.00</b>	<b>0</b>	<b>0.00</b>	<b>0</b>	<b>3</b>	<b>0.07</b>	<b>1</b>	<b>1</b>	<b>16</b>	<b>17</b>	<b>0.38</b>	<b>2</b>	<b>0</b>	<b>46.0</b>	<b>1.02</b>

**Single Game Highs**

Statistic	Value	
Kills	6	vs UMBC 08/31/24
Attacks	15	vs UMBC 08/31/24
Digs	1	vs Loyola Chicago 08/27/23, at Kansas 08/31/23, vs Tulsa 09/21/24
Blocks	4	vs UMBC 08/31/24
Block solos	1	at Utah St. 09/07/24
Block assists	4	vs UMBC 08/31/24
PCT	1.000	vs Houston 09/13/24



Purdue Women's Volleyball  
Individual Career Summaries  
All games

Page 2/7  
as of Oct 20, 2024

CHICOINE, Chloe

SEASON	TEAM	SM-MP	K	K/S	E	TA	PCT	A	A/S	SA	SA/S	SE	DIG	D/S	RE	BS	BA	TB	B/S	BE	BHE	PTS	PTS/S
2023-24	Purdue	125-32	478	3.82	142	1315	.256	27	0.22	39	0.31	53	283	2.26	30	5	24	29	0.23	7	1	534.0	4.27
2024-25	Purdue	70-19	230	3.29	81	696	.214	26	0.37	13	0.19	23	181	2.59	7	2	20	22	0.31	3	0	255.0	3.64
TOTAL		195 - 51	708	3.63	223	2011	.241	53	0.27	52	0.27	76	464	2.38	37	7	44	51	0.26	10	1	789.0	4.05

Single Game Highs

Statistic	Value	
Kills	27	vs Penn St. 11/05/23
Attacks	61	vs Penn St. 11/05/23
Assists	5	at Nebraska 10/11/24
Serve Aces	4	vs Illinois 10/04/23, vs Michigan St. 11/12/23
Digs	23	vs Wisconsin 11/17/23
Blocks	4	at Utah St. 09/07/24
Block solos	2	at Utah St. 09/07/24
Block assists	3	vs Indiana 10/18/23, at Wisconsin 11/01/23, vs Michigan St. 11/12/23, vs Houston 09/13/24

COLVIN, Raven

SEASON	TEAM	SM-MP	K	K/S	E	TA	PCT	A	A/S	SA	SA/S	SE	DIG	D/S	RE	BS	BA	TB	B/S	BE	BHE	PTS	PTS/S
2021-22	Purdue	96-30	169	1.76	54	330	.348	4	0.04	2	0.02	4	12	0.13	0	13	105	118	1.23	20	1	236.5	2.46
2022-23	Purdue	122-32	269	2.20	98	599	.285	6	0.05	43	0.35	59	74	0.61	1	22	151	173	1.42	19	1	409.5	3.36
2023-24	Purdue	125-32	269	2.15	105	586	.280	11	0.09	26	0.21	40	61	0.49	3	19	148	167	1.34	16	0	388.0	3.10
2024-25	Purdue	70-19	183	2.61	49	332	.404	4	0.06	27	0.39	39	37	0.53	1	18	96	114	1.63	11	0	276.0	3.94
TOTAL		413 - 113	890	2.15	306	1847	.316	25	0.06	98	0.24	142	184	0.45	5	72	500	572	1.38	66	2	1310	3.17

Single Game Highs

Statistic	Value	
Kills	19	at Minnesota 09/28/24
Attacks	32	vs Utah 09/02/22, vs Marquette 12/01/23
Assists	2	vs Illinois 10/04/23, vs Marquette 12/01/23
Serve Aces	7	at Minnesota 09/28/24
Digs	8	vs Marquette 09/01/23
Blocks	16	at Maryland 11/23/22
Block solos	5	at Maryland 11/23/22
Block assists	11	at Maryland 11/23/22





Purdue Women's Volleyball  
Individual Career Summaries  
All games

Page 3/7  
as of Oct 20, 2024

GRAY, Raven

SEASON	TEAM	SM-MP	K	K/S	E	TA	PCT	A	A/S	SA	SA/S	SE	DIG	D/S	RE	BS	BA	TB	B/S	BE	BHE	PTS	PTS/S
2024-25	Purdue	1-1	1	1.00	0	1	1.000	0	0.00	0	0.00	0	0	0.00	0	0	0	0	0.00	0	0	1.0	1.00
TOTAL		1 - 1	1	1.00	0	1	1.000	0	0.00	0	0.00	0	0	0.00	0	0	0	0	0.00	0	0	1.0	1.00

Single Game Highs

Statistic	Value	
Kills	1	vs UMBC 08/31/24
Attacks	1	vs UMBC 08/31/24
PCT	1.000	vs UMBC 08/31/24

HEANEY, Grace

SEASON	TEAM	SM-MP	K	K/S	E	TA	PCT	A	A/S	SA	SA/S	SE	DIG	D/S	RE	BS	BA	TB	B/S	BE	BHE	PTS	PTS/S
2023-24	Purdue	69-22	92	1.33	44	249	.193	3	0.04	0	0.00	0	23	0.33	0	4	46	50	0.72	5	0	119.0	1.72
TOTAL		69 - 22	92	1.33	44	249	.193	3	0.04	0	0.00	0	23	0.33	0	4	46	50	0.72	5	0	119.0	1.72

Single Game Highs

Statistic	Value	
Kills	13	at Ohio St. 10/15/23
Attacks	24	at Ohio St. 10/15/23
Assists	1	at Ohio St. 10/15/23, at Wisconsin 11/01/23, vs Northwestern 10/01/23
Digs	3	at Ohio St. 10/15/23, at Penn St. 10/22/23
Blocks	6	vs Indiana 10/18/23
Block solos	1	vs SMU 09/08/23, at Penn St. 10/22/23, vs Kentucky 09/09/23, vs Oregon 12/07/23
Block assists	6	vs Indiana 10/18/23



Purdue Women's Volleyball  
Individual Career Summaries  
All games

Page 4/7  
as of Oct 20, 2024

**HORNUNG, Ali**

SEASON	TEAM	SM-MP	K	K/S	E	TA	PCT	A	A/S	SA	SA/S	SE	DIG	D/S	RE	BS	BA	TB	B/S	BE	BHE	PTS	PTS/S
2021-22	Purdue	63-22	0	0.00	1	1	-1.000	3	0.05	7	0.11	11	32	0.51	3	0	2	2	0.03	0	0	8.0	0.13
2022-23	Purdue	122-32	2	0.02	4	17	-.118	29	0.24	28	0.23	26	303	2.48	15	0	0	0	0.00	1	0	30.0	0.25
2023-24	Purdue	114-31	0	0.00	0	3	.000	15	0.13	15	0.13	18	277	2.43	25	1	0	1	0.01	0	0	16.0	0.14
2024-25	Purdue	70-19	0	0.00	0	4	.000	63	0.90	4	0.06	5	272	3.89	18	0	1	1	0.01	0	0	4.5	0.06
<b>TOTAL</b>		<b>369 - 104</b>	<b>2</b>	<b>0.01</b>	<b>5</b>	<b>25</b>	<b>-.120</b>	<b>110</b>	<b>0.30</b>	<b>54</b>	<b>0.15</b>	<b>60</b>	<b>884</b>	<b>2.40</b>	<b>61</b>	<b>1</b>	<b>3</b>	<b>4</b>	<b>0.01</b>	<b>1</b>	<b>0</b>	<b>58.5</b>	<b>0.16</b>

**Single Game Highs**

Statistic	Value	
Kills	1	at Penn St. 11/25/22, vs Penn St. 11/12/22
Attacks	3	at Minnesota 10/22/22
Assists	7	vs Kentucky 09/14/24, vs UCLA 10/17/24
Serve Aces	4	vs Bradley 09/02/22
Digs	24	at Minnesota 09/28/24
Blocks	2	vs Rutgers 10/02/21
Block solos	1	at Kansas 08/31/23
Block assists	2	vs Rutgers 10/02/21

**HUDSON, Eva**

SEASON	TEAM	SM-MP	K	K/S	E	TA	PCT	A	A/S	SA	SA/S	SE	DIG	D/S	RE	BS	BA	TB	B/S	BE	BHE	PTS	PTS/S
2022-23	Purdue	122-32	515	4.22	176	1420	.239	10	0.08	34	0.28	15	249	2.04	21	7	54	61	0.50	5	0	583.0	4.78
2023-24	Purdue	125-32	560	4.48	167	1509	.260	8	0.06	14	0.11	17	255	2.04	29	8	47	55	0.44	3	0	605.5	4.84
2024-25	Purdue	70-19	302	4.31	75	800	.284	8	0.11	10	0.14	16	171	2.44	16	2	33	35	0.50	3	0	330.5	4.72
<b>TOTAL</b>		<b>317 - 83</b>	<b>1377</b>	<b>4.34</b>	<b>418</b>	<b>3729</b>	<b>.257</b>	<b>26</b>	<b>0.08</b>	<b>58</b>	<b>0.18</b>	<b>48</b>	<b>675</b>	<b>2.13</b>	<b>66</b>	<b>17</b>	<b>134</b>	<b>151</b>	<b>0.48</b>	<b>11</b>	<b>0</b>	<b>1519</b>	<b>4.79</b>

**Single Game Highs**

Statistic	Value	
Kills	30	vs Wisconsin 11/17/23
Attacks	73	vs Marquette 12/01/23
Assists	2	5 times
Serve Aces	4	at Michigan St. 11/04/22
Digs	17	vs UCLA 10/17/24, at Illinois 09/30/22
Blocks	5	at Northwestern 10/28/22, vs Utah 09/02/22, at Iowa 09/25/22, vs Kansas St. 08/30/24
Block solos	2	vs Wisconsin 11/17/23
Block assists	5	at Northwestern 10/28/22, vs Utah 09/02/22



Purdue Women's Volleyball  
Individual Career Summaries  
All games

Page 5/7  
as of Oct 20, 2024

KANE, Julia

SEASON	TEAM	SM-MP	K	K/S	E	TA	PCT	A	A/S	SA	SA/S	SE	DIG	D/S	RE	BS	BA	TB	B/S	BE	BHE	PTS	PTS/S
2023-24	Purdue	1-1	0	0.00	0	0	.000	0	0.00	0	0.00	0	0	0.00	0	0	0	0	0.00	0	0	0.0	0.00
2024-25	Purdue	49-15	0	0.00	0	0	.000	8	0.16	11	0.22	23	23	0.47	1	0	0	0	0.00	0	0	11.0	0.22
TOTAL		50 - 16	0	0.00	0	0	.000	8	0.16	11	0.22	23	23	0.46	1	0	0	0	0.00	0	0	11.0	0.22

Single Game Highs

Statistic	Value	
Assists	2	at Northwestern 10/04/24, at Kansas 09/19/24
Serve Aces	3	at Minnesota 09/28/24
Digs	6	vs Tulsa 09/21/24

MCALCER, Ryan

SEASON	TEAM	SM-MP	K	K/S	E	TA	PCT	A	A/S	SA	SA/S	SE	DIG	D/S	RE	BS	BA	TB	B/S	BE	BHE	PTS	PTS/S
2024-25	Purdue	69-19	2	0.03	1	4	.250	21	0.30	14	0.20	25	157	2.28	13	0	0	0	0.00	0	0	16.0	0.23
TOTAL		69 - 19	2	0.03	1	4	.250	21	0.30	14	0.20	25	157	2.28	13	0	0	0	0.00	0	0	16.0	0.23

Single Game Highs

Statistic	Value	
Kills	1	vs Kentucky 09/14/24, vs Tulsa 09/21/24
Attacks	1	at Northwestern 10/04/24, vs Kentucky 09/14/24, at Kansas 09/19/24, vs Tulsa 09/21/24
Assists	3	vs Houston 09/13/24, vs Tulsa 09/21/24, vs UCLA 10/17/24
Serve Aces	6	at Minnesota 09/28/24
Digs	15	vs Indiana 10/19/24
PCT	1.000	vs Kentucky 09/14/24, vs Tulsa 09/21/24

MYERS, Lourdes

SEASON	TEAM	SM-MP	K	K/S	E	TA	PCT	A	A/S	SA	SA/S	SE	DIG	D/S	RE	BS	BA	TB	B/S	BE	BHE	PTS	PTS/S
2022-23	Purdue	29-16	25	0.86	8	54	.315	0	0.00	0	0.00	0	3	0.10	0	0	16	16	0.55	3	0	33.0	1.14
2023-24	Purdue	112-32	164	1.46	53	333	.333	4	0.04	0	0.00	0	28	0.25	1	11	99	110	0.98	33	1	224.5	2.00
2024-25	Purdue	66-19	68	1.03	17	146	.349	2	0.03	0	0.00	0	18	0.27	1	7	60	67	1.02	20	0	105.0	1.59
TOTAL		207 - 67	257	1.24	78	533	.336	6	0.03	0	0.00	0	49	0.24	2	18	175	193	0.93	56	1	362.5	1.75

Single Game Highs

Statistic	Value	
Kills	11	vs Indiana 10/18/23
Attacks	24	vs Indiana 10/18/23
Assists	1	6 times
Digs	3	vs Southern California 09/15/23
Blocks	9	vs Michigan St. 11/12/23, vs UCLA 10/17/24
Block solos	3	vs UCLA 10/17/24
Block assists	9	vs Michigan St. 11/12/23



Purdue Women's Volleyball  
Individual Career Summaries  
All games

Page 6/7  
as of Oct 20, 2024

**RASTOVSKI, Emily**

SEASON	TEAM	SM-MP	K	K/S	E	TA	PCT	A	A/S	SA	SA/S	SE	DIG	D/S	RE	BS	BA	TB	B/S	BE	BHE	PTS	PTS/S
2022-23	Purdue	10-8	8	0.80	4	20	.200	0	0.00	0	0.00	0	0	0.00	0	0	2	2	0.20	0	0	9.0	0.90
2023-24	Purdue	15-7	10	0.67	5	25	.200	1	0.07	0	0.00	0	4	0.27	0	0	7	7	0.47	0	0	13.5	0.90
<b>TOTAL</b>		<b>25 - 15</b>	<b>18</b>	<b>0.72</b>	<b>9</b>	<b>45</b>	<b>.200</b>	<b>1</b>	<b>0.04</b>	<b>0</b>	<b>0.00</b>	<b>0</b>	<b>4</b>	<b>0.16</b>	<b>0</b>	<b>0</b>	<b>9</b>	<b>9</b>	<b>0.36</b>	<b>0</b>	<b>0</b>	<b>22.5</b>	<b>0.90</b>

**Single Game Highs**

Statistic	Value	
Kills	4	vs Xavier 09/10/22
Attacks	10	vs Penn St. 11/05/23
Assists	1	vs Penn St. 11/05/23
Digs	4	vs Penn St. 11/05/23
Blocks	3	vs Penn St. 11/05/23
Block assists	3	vs Penn St. 11/05/23

**SHONDELL, Allie**

SEASON	TEAM	SM-MP	K	K/S	E	TA	PCT	A	A/S	SA	SA/S	SE	DIG	D/S	RE	BS	BA	TB	B/S	BE	BHE	PTS	PTS/S
2024-25	Purdue	3-3	0	0.00	1	1	-1.000	11	3.67	0	0.00	1	1	0.33	0	0	3	3	1.00	0	0	1.5	0.50
<b>TOTAL</b>		<b>3 - 3</b>	<b>0</b>	<b>0.00</b>	<b>1</b>	<b>1</b>	<b>-1.000</b>	<b>11</b>	<b>3.67</b>	<b>0</b>	<b>0.00</b>	<b>1</b>	<b>1</b>	<b>0.33</b>	<b>0</b>	<b>0</b>	<b>3</b>	<b>3</b>	<b>1.00</b>	<b>0</b>	<b>0</b>	<b>1.5</b>	<b>0.50</b>

**Single Game Highs**

Statistic	Value	
Attacks	1	at Utah St. 09/07/24
Assists	5	vs Tulsa 09/21/24
Digs	1	at Utah St. 09/07/24
Blocks	2	vs Tulsa 09/21/24
Block assists	2	vs Tulsa 09/21/24
PCT	-1.000	at Utah St. 09/07/24

**WILLIAMS, Rachel**

SEASON	TEAM	SM-MP	K	K/S	E	TA	PCT	A	A/S	SA	SA/S	SE	DIG	D/S	RE	BS	BA	TB	B/S	BE	BHE	PTS	PTS/S
2024-25	Purdue	39-16	1	0.03	0	3	.333	1	0.03	7	0.18	11	9	0.23	0	0	0	0	0.00	0	0	8.0	0.21
<b>TOTAL</b>		<b>39 - 16</b>	<b>1</b>	<b>0.03</b>	<b>0</b>	<b>3</b>	<b>.333</b>	<b>1</b>	<b>0.03</b>	<b>7</b>	<b>0.18</b>	<b>11</b>	<b>9</b>	<b>0.23</b>	<b>0</b>	<b>0</b>	<b>0</b>	<b>0</b>	<b>0.00</b>	<b>0</b>	<b>0</b>	<b>8.0</b>	<b>0.21</b>

**Single Game Highs**

Statistic	Value	
Kills	1	vs California 09/05/24
Attacks	1	vs California 09/05/24, vs Creighton 09/20/24, vs Penn St. 09/25/24
Assists	1	vs Creighton 09/20/24
Serve Aces	2	vs Indiana 10/19/24
Digs	4	vs UMBC 08/31/24
PCT	1.000	vs California 09/05/24



Purdue Women's Volleyball  
Individual Career Summaries  
All games

Page 7/7  
as of Oct 20, 2024

WOLLARD, Kenna

SEASON	TEAM	SM-MP	K	K/S	E	TA	PCT	A	A/S	SA	SA/S	SE	DIG	D/S	RE	BS	BA	TB	B/S	BE	BHE	PTS	PTS/S
2023-24	Purdue	60-21	57	0.95	36	184	.114	0	0.00	0	0.00	0	22	0.37	0	3	35	38	0.63	9	0	77.5	1.29
2024-25	Purdue	65-18	118	1.82	46	288	.250	1	0.02	0	0.00	0	29	0.45	0	1	37	38	0.58	7	0	137.5	2.12
TOTAL		125 - 39	175	1.40	82	472	.197	1	0.01	0	0.00	0	51	0.41	0	4	72	76	0.61	16	0	215.0	1.72

Single Game Highs

Statistic	Value	
Kills	18	at Northwestern 10/04/24
Attacks	32	at Northwestern 10/04/24
Assists	1	vs Indiana 10/19/24
Digs	5	vs Illinois 10/04/23
Blocks	5	vs Houston 09/13/24
Block solos	1	at Michigan 11/24/23, at Rutgers 09/24/23, at Michigan St. 11/25/23, vs Creighton 09/20/24
Block assists	5	vs Houston 09/13/24

YIM, Sydney

SEASON	TEAM	SM-MP	K	K/S	E	TA	PCT	A	A/S	SA	SA/S	SE	DIG	D/S	RE	BS	BA	TB	B/S	BE	BHE	PTS	PTS/S
2022-23	Purdue	4-4	0	0.00	0	0	.000	2	0.50	0	0.00	0	2	0.50	0	0	1	1	0.25	0	0	0.5	0.13
2023-24	Purdue	1-1	0	0.00	0	0	.000	1	1.00	0	0.00	0	0	0.00	0	0	0	0	0.00	0	0	0.0	0.00
2024-25	Purdue	1-1	0	0.00	0	0	.000	1	1.00	0	0.00	0	0	0.00	0	0	0	0	0.00	0	0	0.0	0.00
TOTAL		6 - 6	0	0.00	0	0	.000	4	0.67	0	0.00	0	2	0.33	0	0	1	1	0.17	0	0	0.5	0.08

Single Game Highs

Statistic	Value	
Assists	1	vs Rutgers 10/02/22, vs Indiana 10/19/24, vs Fairfield 11/30/23, vs Bradley 09/02/22
Digs	2	vs Bradley 09/02/22
Blocks	1	vs Rutgers 10/02/22
Block assists	1	vs Rutgers 10/02/22