



BOILERMAKERS

2021-22 WOMEN'S BASKETBALL



1999 NCAA CHAMPIONS /// 3 FINAL FOURS /// 26 NCAA TOURNAMENT APPEARANCES /// 9 BIG TEN TOURNAMENT TITLES /// 7 BIG TEN REGULAR SEASON TITLES

THE MATCHUP

GAME 29 | SENIOR DAY ON SUNDAY FOR PURDUE VS. WISCONSIN

Boilermakers Take Aim At Visiting Badgers In Final Home Game

1 PM (ET) | Sunday, Feb. 27, 2022 | Mackey Arena | BIG+

PURDUE BOILERMAKERS

16-12, 7-10 BIG

Head Coach: Katie Gearlds (Purdue '07)

Record at Purdue: 16-12 | 1st Season

Career Record: 244-62 | 9th Season



Record: 16-12, 7-10
Ranking: AP - | Coaches -
Streak: L1
Last 5/10: 2-3 / 4-6
NET: 74
Last Game: Northwestern 68, Purdue 51 | Feb. 24

WISCONSIN BADGERS

7-20, 4-13 BIG

Head Coach: Marisa Moseley (Boston U. '04)

Record at School: 7-20 | 1st Season

Career Record: 52-49 | 4th Season



Record: 7-20, 4-13
Ranking: AP - | Coaches -
Streak: L3
Last 5/10: 1-4, 3-7
NET: 205
Last Game: Nebraska 80, Wisconsin 70 | Feb. 23

THE STARTING FIVE

1. Purdue welcomes Wisconsin to Mackey Arena on Sunday, Feb. 27, with eyes on collecting back-to-back Senior Day victories.
2. The Boilermakers have the opportunity to finish at .500 (4-4) for the month of February with a win over the Badgers.
3. During the month of February, Purdue has been led in scoring by Abbey Ellis at 12.6 points per game. Jeanae Terry has pulled down an outstanding 9.6 rebounds per game during that stretch.
4. Always filling the stat sheet, Terry is one of just five players nationally to be currently averaging 6.0 points (6.9), 6.0 rebounds (6.9) and 5.0 assists (5.8) per game.
5. Terry has been one of the top facilitators in the conference and the country, with her 163 assists (ninth nationally) and 5.8 assists per game (12th nationally) ranking third in the BIG.

A WIN WOULD...

- Provide Purdue its 2nd-straight Senior Day victory at Mackey Arena
- Give the Boilers their 17th overall win
- Gets the Boilermakers to eight wins in BIG

SERIES HISTORY

Overall	54-21
At Home	30-5
On the Road	18-15
Neutral Site	6-1
Streak	L1
Under Gearlds	0-1
First Meeting	12/3/76 Home W, 53-40
Last Purdue Win	1/21/21 Home W, 56-55
Last Purdue Loss	2/13/22 Away L, 54-52
• Purdue has won four consecutive games against Wisconsin at Mackey Arena	
• The Boilers could improve to 3-2 in their last five games against the Badgers with a win	

BY THE NUMBERS

PURDUE		WISCONSIN	
Overall	BIG	Overall	BIG
69.2	66.8	Points	57.4 56.1
+2.0	-2.2	Margin	-9.7 -13.4
67.2	69.1	Defense	67.1 69.4
42.3	40.9	Field Goal Pct.	.395 .386
.415	.416	Field Goal Defense	.438 .453
.320	.297	3-Pt Pct.	.324 .332
.75	.72	3-Pt Per Game	6.2 6.5
.278	.293	3-Pt. Pct. Defense	.334 .350
4.9	4.8	3-Pt. Defense Per Game	6.1 5.9
.751	.763	Free Throw Pct.	.724 .729
35.7	35.7	Rebounds Per Game	29.5 27.7
-0.7	-1.7	Rebound Margin	-6.5 -9.2
15.8	14.4	Assists	12.7 13.1
15.3	14.8	Turnovers	15.4 16.0
1.0	1.0	Assist-Turnover	0.8 0.8
7.1	6.9	Steals	6.8 6.4
4.0	3.9	Blocks	2.4 2.2

17

Jeanae Terry has two 17-rebound games (at Wisconsin, Feb. 13; vs. Illinois, Feb. 17) - the only BIG player with 17+ boards in conference play this season.

20

Abbey Ellis secured her third 20-point game as a Boilermaker in the win at Rutgers -- she had eight each season as a freshman and sophomore at Cal Poly.

903

Purdue has 903 victories all-time, one of 40 programs in NCAA history to win at least 900 games.

THE PURDUE BOILERMAKERS

No.	Name	Yr.	Pos.	Ht.	Hometown	GP/GS	MPG	PPG	RPG	APG
0	Brooke Moore	Sr.	G	5-7	Atlanta, Ga.	28/0	19.0	9.9	1.9	1.0
1	Skye Williams	Fr.	G	5-10	Pickerington, Ohio	-	-	-	-	-
2	Rokia Doumbia (<i>roe-KEY-ya DOOM-be-ya</i>)	Sr.	G	5-9	Bamako, Mali	9/0	11.7	3.4	3.7	1.1
3	Jayla Smith	Fr.	G	6-0	Indianapolis, Ind.	26/1	16.6	5.1	1.9	0.8
4	Mide Oriyomi (<i>mee-DAY like origami</i>)	Jr.	G/F	6-0	Hamilton, Ontario	16/0	9.0	2.3	1.7	0.4
5	Cassidy Hardin	Sr.	G	5-10	Bargersville, Ind.	28/28	31.1	8.7	2.5	1.5
10	Jeanae Terry (<i>jah-NAY</i>)	Jr.	G	5-11	Detroit, Mich.	28/28	29.3	6.9	6.9	5.8
13	Ajah Stallings (<i>Asia</i>)	Sr.	G	5-9	Indianapolis, Ind.	2/0	2.8	0.0	0.5	0.0
24	Ava Learn (<i>AA-va</i>)	Fr.	G	6-1	Hyde Park, N.Y.	18/0	13.1	4.9	2.7	0.3
23	Abbey Ellis	Jr.	G	5-6	Melbourne, Australia	28/28	28.5	11.3	2.9	3.1
24	Ra Shaya Kyle (<i>rah-SHAY-yah</i>)	So.	C	6-6	Marion, Ind.	9/9	19.3	11.0	5.7	0.2
30	Nyagoo Gony (<i>n-YAH-gwah GOE-knee</i>)	Sr.	F	6-2	Lincoln, Neb.	10/0	3.4	0.9	0.9	0.0
33	Madison Layden	So.	G	6-1	Kokomo, Ind.	27/27	33.9	11.7	4.6	2.6
35	Rickie Woltman	Jr.	F	6-4	St. Louis, Mo.	28/19	20.0	6.9	5.6	0.4

MEDIA COVERAGE

TV/STREAM - BIG+

Play-by-Play - TBA

Analyst - TBA

RADIO - Purdue Radio Network | 95.3 BOB FM

Play-by-Play - Tim Newton

Analyst - TBA

LIVE STATS - PurdueStats.com

2021-22 PURDUE SCHEDULE

Date	P/O Rank	Opponent	Time	TV/Result
<i>November</i>				
11/7	-/-	Findlay (ex)	2 PM	W, 89-64
11/10	-/-	Western Kentucky	7:30 PM (ET)	W, 79-69
11/14	-/-	Western Michigan	2 PM	W, 70-62
11/17	-/-	Illinois State	7 PM (ET)	W, 76-64
11/20	-/-	Dayton	6 PM	L, 78-62
11/22	-/-	Marshall	7 PM	W, 70-60
11/25	-/22	West Virginia~	5 PM	L, 65-57
11/27	-/17	Florida State~	11 AM	W, 66-61

December

12/1	RV/RV	Georgia Tech^	7 PM	W, 53-52
12/5	RV/18	Ohio State^	2 PM	L, 70-53
12/8	-/7	Maryland*	7 PM	L, 86-71
12/12	-/-	Denver	2 PM	W, 101-68
12/19	-/-	Miami	2 PM	W, 82-76
12/21	-/-	North Alabama	11 AM	W, 86-53
12/30	-/-	Wisconsin*	9 PM (ET)	Postponed

January

1/2	-/-	Rutgers*	2 PM	W, 60-58
1/9	-/-	Michigan State*	2 PM	W, 69-59
1/13	-/RV	Iowa*	7 PM	L, 79-66
1/16	-/6	Indiana#	2 PM	L, 73-68 (OT)
1/20	-/-	Illinois*	8 PM (ET)	W, 89-67
1/24	-/8	Michigan*	6 PM	L, 79-66
1/27	-/-	Minnesota*	7 PM	W, 80-66
1/30	-/-	Nebraska*	3 PM (ET)	L, 81-66

February

2/4	-/-	Northwestern*	6 PM	L, 67-80
2/6	6/5	Indiana*	1 PM	L, 64-57
2/9	-/-	Penn State*	7 PM	W, 81-77
2/13	-/-	Wisconsin*	2 PM	L, 54-52
2/17	-/-	Illinois*	7 PM	W, 70-54
2/20	-/-	Rutgers*	1 PM	W, 70-59
2/24	-/-	Northwestern*	8 PM (ET)	L, 68-51
2/27	-/-	Wisconsin*	1 PM	BIG+

March

3/2-6	Big Ten Tournament Indianapolis, Ind.			BTN/ESPN2
-------	---------------------------------------	--	--	-----------

Bold indicates Home Game

* Indicates Big Ten Conference game

~ St. Pete Showcase | St. Petersburg, Fla.

^ Big Ten/ACC Challenge

All times subject to change

Rankings are from the AP Top 25

	2021-22 Season	Streak	Under Gearlds
Overall:	16-12	L1	16-12
Big Ten opponents:	7-10	L1	7-10
Non-Conference (RS):	9-2	W5	9-2
Home:	10-5	W2	10-5
Away:	5-6	L1	5-6
Neutral:	1-1	W1	1-1
Post (BIG, NCAA, WNIT):	-	L2	-

FOLLOW ON THE INTERWEBS

• Twitter - @PurdueWBB

• TikTok - @PurdueWBB

• Instagram - @PurdueWBB

• YouTube - /purdueports

• Facebook - /PurdueWBB

• Website - PurdueSports.com/WBB

STRATEGIC COMMUNICATIONS

Contact: Ian MacDougall Patrick Crawford Adam Kuffner

Email: imacdoug@purdue.edu pcrawf@purdue.edu kuffner@purdue.edu

Cell: 317-313-7486 317-412-4220 662-816-0497

Office: 765-494-0529

Address: 900 John Wooden Drive, West Lafayette, Ind. | 47907



KG Quick Hits

HEAD COACH KATIE GEARLDS

- Born - Oct. 26, 1984 (37 years old)
- Hired as associate head coach on March 26, 2021
- Elevated to head coach on Sept. 16, 2021
- Ninth season as a head coach, first at Purdue
- Youngest full-time Power 5 head coach this season
- Six-year professional basketball career
- College - Purdue '07
- High School - Beech Grove '03

AT PURDUE (2021-PRESENT)

- Elevated to head coach just 47 days before the 2021-22 season began
- Announced as the associate head coach on March 26, 2021, as part of a succession plan that, originally, would see her take over the head seat for the 2022-23 campaign
- Reconstructing offensive and defensive schemes, while creating an impactful recruiting strategy

AT MARIAN (2013-2021)

- Went 228-50 (82%) over eight seasons at Marian in the NAIA
- Won back-to-back NAIA National Championships in 2016 and 2017
- Led 12 All-America honorees and 28 All-Crossroads League selections
- Named NAIA National Coach of the Year three times (2016, 2017, 2020)

PROFESSIONAL CAREER (2007-2013)

- Played six professional seasons across the WNBA, Spain, Greece, Portugal and Slovakia
- Went 7th overall to the Seattle Storm in the 2007 WNBA Draft, the highest pick in program history. Played and learned from Sue Bird, Swin Cash, Lauren Jackson, Brian Agler and Adia Barnes

AT PURDUE (2004-07)

- 2007 All-America, 4-time All-Big Ten selection, 2007 Big Ten Champion
- Finished with 1,974 points, 238 3-pointers and 103 wins at Purdue
- Set the school record with 41 points in a game and 707 in a season
- Four NCAA Tournament appearances and a 2007 Elite Eight

AT BEECH GROVE HIGH SCHOOL

- 2003 3A Indiana State Champion, Indiana Miss Basketball
- 2,521 career points, sixth in state history, averaging 30.1 points per game
- 2003 McDonald's All-America Game MVP, alongside LeBron James

LAST TIME OUT

- Timely jump shots and the free throw line eluded Purdue in a hard-fought contest at Northwestern (Feb. 24), with the Boilermakers yielding a 68-51 result to the home team Wildcats on their Senior Day at Welsh-Ryan Arena.
- Junior guard Jeanae Terry (Detroit, Mich.) finished one rebound shy of a double-double, but matched a career-high with 12 assists. Terry led the way on the glass with her nine boards.
- Junior guard Abbey Ellis (Melbourne, Australia) had a team-best eight points for the Boilers at the halftime break, converting 4-of-6 field goal attempts. She finished with a team-leading 12 points for the game.

STARTING LINEUPS

Lineup (Record)	Games
1. Layden, Hardin, Terry, Ellis, Kyle (6-3)	1,2,3,4,5,6,7,8,9
2. Hardin, Terry, Ellis, Woltman, Smith (0-1)	10
3. Hardin, Terry, Ellis, Layden, Woltman (10-8)	11,12,13,14,15,16,17,18,19,20,21,22,23,24,25,26,27,28

Player	19	20	21	22	Total	Purdue Record
Rokia Dombia	-	-	-	-	-	-
Abbey Ellis	-	27*	23*	28	78*	16-12
Nyagoo Gony	1	-	-	-	1	1-0
Cassidy Hardin	3	8	-	28	39	24-15
Ra Shaya Kyle	-	-	-	9	9	6-3
Madison Layden	-	-	21	27	48	22-26
Ava Learn	-	-	-	-	-	-
Brooke Moore	-	17*	18	-	34*	6-12
Mide Oriyomi	-	2*	20*	-	22*	-
Jayla Smith	-	-	-	1	1	0-1
Ajah Stallings	-	-	2	-	2	1-1
Jeanae Terry	-	11*	23*	28	62*	16-12
Skye Williams	-	-	-	-	-	-
Rickie Woltman	-	-	-	19	19	10-9

* includes starts at previous school

ON THIS DAY

Overall.....	6-5
At Home.....	4-3
On the Road.....	1-2
Neutral Site.....	1-0
Last Time.....	2005 Win vs. Wisconsin 69-59

1964 – On February 27, 1964, the Italian government announces that it is accepting suggestions on how to save the renowned Leaning Tower of Pisa from collapse.

BACK AT IT

- Purdue Women's Basketball is in its 47th season in 2021-22.
- With an all-time record of 903-522, the Boilermakers became the 40th program in NCAA Division I to join the 900-win club.
- Purdue has reached the NCAA Tournament 26 times (last 2017), won the Big Ten Tournament nine times (last 2013) and the Big Ten regular-season title seven times (last 2002).
- The 1999 NCAA Champions, Purdue is the only program to win a national title as a member of the Big Ten.

THE KG ERA

- Katie Gearlds is in her first season at the helm of the Boilermakers, following eight successful campaigns at NAIA Marian.
- Gearlds is the ninth head coach in program history and the second alumna to take the helm, following Sharon Versyp.
- One of the all-time greats in program history, Gearlds took Purdue to four NCAA Tournament appearances during her playing career from 2003-07, finishing with an All-America honor and Elite Eight bid as a senior.
- Gearlds was originally slated to move into the head seat in 2022 as part of a succession plan, but Versyp's retirement on Sept. 16, 2021, moved that timeline up by six months.

BIG TEN, BIG PLAY

- Purdue is in its 40th season of women's basketball in the Big Ten.
- The Boilermakers rank third in conference wins with 419, behind Iowa and Ohio State.
- The Boilermakers have averaged 10.6 Big Ten victories per season
- Purdue has won seven Big Ten regular season titles, good for fourth in league history. All seven titles came between 1991 and 2002.
- Purdue has not finished in the top five of the conference since the 2016-17 season and the top three since 2012-13.

47 DAYS

- The quick change to head coach gave Gearlds just 47 days between her elevation and the start of the 2021-22 season.
- Fortunately, Gearlds had extensive work with the team during the late spring and all of summer workouts to start forming an early bond.
- Here's a list of things that happened in less than 47 days – Beatles' recording of "Please Please Me" (13 hours), Apollo 11 landing on the Moon and returning safely (8 days), writing the Declaration of Independence (18 days), William Henry Harrison's presidency (31 days), average length someone sticks with a diet (36 days).

LAYDEN IS LITERALLY EVERYWHERE

- Illustrating the type of impactful minutes that sophomore guard Madison Layden is giving for the Boilermakers, she is one of just six players nationally to have accumulated 125 rebounds (125), 70 assists (70), 50 three-pointers (59) and 40 steals (46).
- Of that group of six, just four players (Layden included) have more than 10 blocks this season. Layden has 14 blocks to her credit.
- Only two Big Ten Conference players have that aforementioned statistical distinction: Layden and Nebraska's Jaz Shelley.
- Layden leads Purdue in minutes played, points scored, field goal makes and steals through 28 games this seasons.

OPPONENTS SHOULD LEARN TO GUARD AVA

- Making the most of her playing time as a newcomer to the roster has been a focus of freshman guard Ava Learn, and it shows. In Purdue's consecutive wins over Illinois (Feb. 17) and at Rutgers (Feb. 20), Learn twice scored in double-figures for the Boilermakers.
- First, in the win vs. Illinois, Learn reached double-figures for the first time this season with a personal-best total of 12 points (6-for-9 FG) in 17 minutes off the bench.
- The vote of confidence came from head coach Katie Gearlds in the Boilers' following game at Rutgers, with Learn earning 21 minutes off the bench and resetting her season-best in scoring with 13 points (6-for-9 FG, 1-for-1 FT). She also matched her season-high with five rebounds.

SERIES HISTORY VS. WISCONSIN

- Purdue has done well against the Badgers in recent history, winning three of the last four contests over Wisconsin and six of the last 10 contests. The Boilermakers lead the all-time series, 54-21.
- Head coach Katie Gearlds has the opportunity to earn her first victory over Wisconsin as a coach on Sunday, Feb. 27, at Mackey Arena.
- Purdue held Wisconsin to just two points in the first quarter (17-2) of this season's earlier meeting (Feb. 13) – the fewest points allowed in the first quarter in program history. The NCAA Playing Rules Oversight Panel approved NCAA women's basketball moving to four 10-minute quarters ahead of the 2015-16 season.
- After building a 35-15 halftime lead against the Badgers, the home team came roaring back in the third and fourth quarters to steal a 54-52 result.

THUNDER FROM DOWN UNDER

- Abbey Ellis has made an instant impact on both ends of the floor to start her Purdue career, quickly becoming a fan favorite in West Lafayette.
- The Aussie is shooting 46.0% from the floor and 87.2% at the line, with 18 games in double figures.
- Following 818 points in two years at Cal Poly, Ellis joined the 1,000-point club with an electrifying 19-point performance against Indiana.
- The junior recorded 11 assists and five steals against Western Michigan. It was just the ninth time by a player in the Big Ten sine 2009-10 and believed to be* the second Boilermaker to ever hit that line, joining Sharon Versyp (12 ast, 7 stls vs. San Diego State – 12/4/87).
- Ellis's 11-assist outing was the 28th time in program history a player topped 11 dimes in a game.
- Purdue's first Australian rocks a ribbon in her hair during games from a selection that her mother sends her to wear.
- For games against Iowa, Indiana and Illinois, Ellis' mother, sisters and best friend flew from Australia to visit her. She averaged 19.3 points per game during that stretch.

**Kudos to past Purdue SIDs for helpful, in-depth media guides*

LETTING IT FLY

- Eight different Boilermakers have made a 3-pointer, led by Cassidy Hardin's 69, Madison Layden's 59 and Brooke Moore's 33. Iowa, Maryland, Minnesota, Wisconsin and Purdue are the only teams in the Big Ten Conference with three different players with 30 made three-pointers on the season.
- Currently 211-of-642, the Boilermakers have broken the single-season record for team 3-pointers made (previously 209, 2013-14).
- With 659 three-point attempts this season, Gearlds' squad has also set the program record, surpassing the 592 triple attempts in 2018-19.
- The Boilermakers are 12-5 when making seven or more triples.
- The Old Gold and Black has made 12 3-pointers in four games this season and attempted 30 or more triples in seven games.
- Prior to this season, Purdue had made 12 or more triples just eight times before and attempted 30 or more 3-pointers just four times.
- The Boilermakers let it loose from distance with 27 made triples through the first three games, the most to start a season at Purdue.
- Hardly surprising for a Katie Gearlds squad to shoot with confidence from distance. While at Marian, her team averaged seven 3-pointers a game and 20 attempts.
- As a player, Gearlds originally set the mark and now ranks tied for third in Purdue history with 238 triples made in a career and second in attempts. She is tied for the record with 88 makes in a season from 2006-07.

SAY GOODKNIGHT

- With its win on Feb. 20 at Rutgers, Purdue has claimed back-to-back victories over the Scarlet Knights for just the third time in program history.
- To start off the series between the two programs, Purdue took the opening two contests of the series (Feb. 22, 1999; March 29, 2009), both non-conference matchups.
- The Boilers won back-to-back wins during BIG action with wins on Feb. 25, 2016 (home, 74-68 OT), and on Feb. 15, 2017 (away, 55-42).
- Prior to Purdue winning its first matchup against Rutgers earlier this season (60-58, Jan. 2, 2022) on a last-second, buzzer-beating layup from junior guard Jeanae Terry, the Scarlet Knights had claimed five-straight wins dating back to the 2017-18 season.
- The win over Rutgers back on Jan. 2, was also significant for head coach Katie Gearlds, as it was her first career Big Ten Conference victory.

NO FIGHT FROM THE ILLINI

- Purdue completed the season sweep of Illinois with a 70-54 victory over the Fighting Illini on Feb. 17, with the sweep standing as the fifth such instance in the last six years.
- The win improved the Boilermakers all-time record against the conference foe to 64-18.
- Purdue held Illinois to 1-of-13 from beyond the arc, the fourth time this season limiting an opponent to one three-pointer or less.
- Against her former team, junior guard Jeanae Terry recorded her fourth double-double of the season with 11 points and 17 rebounds.
- Freshman forward Ava Learn reached double figures for the first time as a Boilermaker, scoring a career high 12 points.
- Senior guard Brooke Moore's team-high 14 points marked her 14th double-digit game this season, all coming off the bench.

RESURGENT RICKIE

- Rickie Woltman has flourished under Gearlds to start the season, recording career highs in points (18), rebounds (11, twice), blocks (4) and minutes played (33).
- Since joining the starting lineup against Maryland, Woltman is averaging 8.7 points, 6.5 rebounds and 22.2 minutes per game.
- A breakout game for the junior from St. Louis came in league play against Penn State, as Woltman secured her second double-double of the season and her career with an 18-point (career-best), 11-rebound performance.

2021-22 PURDUE WOMEN'S BASKETBALL GAME NOTES

- The junior snagged her first career double-double against North Alabama with 14 points and 11 rebounds, both career highs.
- Woltman made her first career start at No. 8 Maryland on Dec. 8 when Ra Shaya Kyle went down due to injury.
- At Illinois State, she blocked four shots in the win, Purdue's first four-block outing since 2019-20.
- With Woltman as the highest ranked recruit by ESPNW in program history, No. 25 player in the class of 2019, Gearlds has sought to put Woltman in positions that benefit her skill set.

DEFENDING THE ARC

- While implementing her defensive philosophy during the quick lead-up ahead of the season, Purdue has developed one of the best 3-point defenses in the Big Ten.
- Purdue is second in the Big Ten with opponents making 27.8% of their 3-point shots and just 4.9 triples per game allowed.
- Those marks are at 29.0% (2nd) and 4.6 against Big Ten opponents
- Purdue has kept 18 opponents to six 3-pointers or fewer.
- Purdue has blanked an opponent behind the arc just five times since the 2009-10 season.

SPREADING THE WEALTH

- The Boilermakers have made it a habit of making an extra pass to find open shooters this season with 15.8 assists per game (30th NCAA, 6th BIG), the most by a Purdue team since 2009-10 and 7.5 3-pointers per game (49th NCAA, 4th BIG).
- Purdue has had 29 different five-assist performances by players.

TERRY MAKING TROUBLE

- Jeanae Terry is stuffing the stat sheet with 6.9 points, 6.9 rebounds and 5.8 assists per game this season.
- She is 12th in the country with 163 assists (3rd BIG) and 12th with 5.8 dimes per game (4th BIG).
- Terry has tallied five points, five assists and five rebounds in 13 games this season, tied for second in the nation.
- Terry is one of five players nationally to average six points, six rebounds and five assists.
- Terry has led the Boilermakers in assists 17 times this year.
- In back-to-back games, she set and matched a new career-high of 17 rebounds at Wisconsin (Feb. 13) and against Illinois (Feb. 17). Her nine offensive boards against the Badgers were the most by a Boilermaker since Natasha Bogdanova pulled down nine against Mississippi State (Dec. 20, 2005).
- Coach Gearlds moved Terry to the point ahead of the West Virginia game, as one of the better players on the roster to handle a press.

TRIPLE-DOUBLE HISTORY

- Jeanae Terry stands alone in Purdue history, men's & women's basketball, as the only player to ever record multiple triple-doubles in a career.
- The junior recorded the fourth triple-double in program history with 10 points, 11 rebounds and 12 assists against Minnesota, made more impressive by not committing a turnover in the win.
- Her first career triple-double came against Miami in December when she went for 11 points, 12 rebounds and 10 assists.
- In both of her triple-double performances, the last category Terry hit double digits in was points.
- Terry is tied for fifth in Big Ten history.
- Terry now sits with Stephanie White and Danielle Campbell as the only Boilermakers in triple-double club.

PURDUE TRIPLE-DOUBLES

Name	Opponent	Date	Points	Rebounds	Assists/Blocks
Jeanae Terry	Minnesota	1/27/22	10	11	12 asts.
Jeanae Terry	Miami	12/19/21	11	12	10 asts.
Stephanie White	Indiana	1/22/99	20	11	10 asts.
Danielle Campbell	Butler	11/17/07	12	11	11 blks.
Joe Barry Carroll*	Arizona	12/10/77	16	16	11 blks.

*BoilerBall all-time leader in rebounds and blocked shots.

PUSHING THE PACE

- "Shoot the ball before you turn it over." - One of the main KG mantras.
- The Boilermakers strive to dish out at least 24 assists and keep turnovers to 12 or less or have a 2-1 assist-to-turnover ratio - achieved twice this year.
- The Boilermakers have posted 20 or more dimes on four occasions, including a season-high 26 assist game against North Alabama, and committed 12 or fewer turnovers five times.
- Purdue is fourth in the Big Ten with an assist rate of 61.1%.
- The Boilermakers are up to 1.03 points per scoring attempt, their highest total since the 2016-17 season.

CASS SHOOT'S THREES. CASS MAKES THREES. PRETTY SIMPLE.

- Hardin sits atop the team with 69 3-pointers at a 33.3% clip.
- At 8.7 points per game, she has made an 5.6 improvement this year.
- In her career, Hardin has made 145 3-pointers and just 20 2-point shots.
- Hardin has 11 games with 10 or more points and 16 outings over 30

minutes. Prior to this year, she had hit those marks four times apiece.

- Hardin sank seven 3-pointers against Denver, tying for fourth most in a single-game at Purdue, finishing with a career-high 25 points.
- The senior earned St. Pete Showcase All-Tournament Team honors after averaging 15 points and making 10 3-pointers over two games.
- Hardin was named to the Big Ten Weekly Honor Roll after scoring 20 ppg and hitting 10 3-pointers against Maryland and Denver.
- The chase is on for the single-season mark of 88, held by Katie Gearlds (2006-07) and Karissa McLaughlin (2018-19).
- More impressive is her 3.94 GPA in HONORS biochemistry.

HARDIN 3-POINT RANKS

Category	Stat	Big Ten	National
3-Pointers Made	69	T-3	23
3-Pointers Attempted	207	3	9
3-Pointers Per Game	2.46	6	47
3-Point Rate*	85.2%	1	14

*Percentage of all scoring attempts from 3-pointers

LAYDEN LEADERSHIP

- Madison Layden has stepped into her expanded role as the go-to player on offense with 11.7 points, 4.6 rebounds and 2.6 assists per game.
- Layden leads Purdue in points, steals and minutes played this season.
- Layden has recorded a steal in all but four games in her career.
- The Kokomo, Ind., native has hit double figures in 21 of 27 outings.
- Layden was the first Boilermaker to score 10 points in 13 straight games since the 2018-19 campaign (Karissa McLaughlin - 17).
- She already topped her career high with 20 points vs. Western Michigan, and then matched that total in the win vs. Penn State (Feb. 9).
- She is the first sophomore captain since FahKara Malone in 2007-08.

MADISON LAYDEN STATS LEADERBOARD

Games in	Led in	Led in	Led in	Led in	Led in
Double Figures	Points	Rebounds	Assists	Steals	Blocks
21	6	5	5	11	7

CONSISTENT SHOOTER

- After seeing Madison Layden nearly break the consecutive 3-point record earlier this year, Cassidy Hardin mounted her own charge to climb up into the best in program history, finishing in third with 23 games straight.
- Madison Layden's 3-point streak officially came to an end against Dayton.
- Layden moved past Katie Gearlds (22) and ranks only Ashley Morrisette (25) on the all-time chart.

PURDUE CONSECUTIVE GAMES WITH A 3-POINTER

Name	Games	Dates
1. Ashley Morrisette	25	1/30/16-12/17/16
2. Madison Layden	24	12/9/20-11/17/21
3. Cassidy Hardin	23	3/10/21-2/4/22
4. Katie Gearlds	22	1/26/06-11/24/06

DOUBLE-DOUBLE CLUB

- Rickie Woltman notched her first career double-double against North Alabama, going for 14 points and 11 rebounds.
- Woltman followed that up with a second double-double against Penn State (Feb. 9), scoring a career-best 18 points along with 11 boards.
- Ra Shaya Kyle finally joined the double-double club with 15 points and 10 rebounds against Marshall.
- Since the end of the 2018-19 season, only four Boilermakers have recorded a double-double - Kyle, Tamara Farquhar, Fatou Diagne and the career record holder Ae'Rianna Harris.
- Kyle added to the double-double list with a 13-point, 10-rebound outing against No. 17/22 Florida State.
- Kyle has led the Boilermakers in scoring twice, rebounding four times and blocks four times this season.

PURDUE 2021-22 DOUBLE-DOUBLES

Name	Opponent	Date	Points	Rebounds	Other
Ra Shaya Kyle	Marshall	11/20	15	10	5-6 FT
Ra Shaya Kyle	Florida State	11/27	13	10	6-12 FG
Jeanae Terry	Miami	12/19	11	12	10 ASTS
Rickie Woltman	N. Alabama	12/21	14	11	7-11 FG
Jeanae Terry	Minn.	1/27	10	11	12 ASTS
Rickie Woltman	Penn State	2/9	18	11	6-7 FT
Jeanae Terry	Illinois	Feb. 17	11	17	5-10 FG

CHASING 900

- The Boilermakers are 40th in NCAA Division I history to join the 900-wins club after a dominant 80-66 victory over Minnesota at Mackey Arena on Jan. 27.
- Only one team has more wins and started after Purdue's inaugural season in 1975-76 - Notre Dame.

SCHOOLS CLOSING IN ON OR HAVE REACHED 900 WINS THIS YEAR

School	First Year	Seasons	Wins	21-22
37. Central Ark.	1909	66	907	6-17
38. North Dakota St.	1967	56	904	8-17
39. Purdue	1976	47	903	16-12
40. Chattanooga	1975	48	902	7-21
41. Iowa	1975	48	899	19-7

Name	Consecutive Made Free Throws	Straight Games with a Three	Consecutive Starts
0 - Moore	4	1	-
1 - Williams	-	-	-
2 - Dombia	0	0	-
3 - Smith	5	0	-
4 - Oriyomi	2	0	-
5 - Hardin	0	5	28
10 - Terry	1	0	28
13 - Stallings	0	0	-
14 - Learn	8	-	-
23 - Ellis	2	0	30* (2 at Cal Poly)
24 - Kyle	0	0	-
30 - Gony	0	0	-
33 - Layden	4	4	27
35 - Woltman	3	0	19

Times Scoring First	2	3	FT	Record in Games
Ellis	2	2	1	1-4
Hardin	1	4		2-3
Kyle	1			1-0
Layden	5	3		6-2
Terry	6			4-2
Woltman	2			2-0

Follow the Squad

No.	Player/Coach	Twitter	Instagram
0	Brooke Moore	@brookiemoe	moore_5
1	Skye Williams	@Skysthalimit21	skysthalimit21
2	Rokia Dombia	-	rokiadombia84
3	Jayla Smith	@_JaylaSmithh	s.jaylasmith
4	Mide Oriyomi	@mide_oryomi	mide4_
5	Cassidy Hardin	@casshardin5	cass_hardin
10	Jeanae Terry	@basquetbol_nae	saucy_nae
13	Ajah Stallings	@StallingsAjah	_ajahstallings
14	Ava Learn	@AvaLearn	ava.learn
23	Abbey Ellis	@_abbeyellis	_abbeyellis
24	Ra Shaya Kyle	@ra_kyle23	rashaya_03
30	Nyagoo Gony	@nyxgoa	nyxgoa
33	Madison Layden	@madison_layden	madison_layden
35	Rickie Woltman	@slick_rick_35	slick_rick35
HC	Katie Gearlds	@katiegearlds4	katiegearlds4
AC	Beth Couture	@CoachCouture21	bcouture21
AC	Michael Scruggs	@CoachScruggs	mscruggs23
AC	Alex Guyton	@AlexGuyton	aguyton41
GA	Karmell Brown	@CoachBrown_K23	karmello23
GA	Jaelen Nice	@Jaelen_Nice_21	jaelen_nice

ALWAYS TAKING ADVICE

- Like the notes? Don't like them? Have a suggestion?
- Feel free to send an email to imacdoug@purdue.edu.
- Like history and looking for a good podcast? I've got two for you: *The History of Rome and Revolutions* listen to host Mike Duncan walk you through some of the most overlooked and fascinating pieces of history with an appreciated amount of satirical wit.
- Huge thank you to *HerHoopStats.com*! There is no better place to get in-depth analytics and rankings for women's college basketball!

ADDITIONAL LINKS

2022 Purdue WBB Media Center:

Game Box Scores:

Sortable Stats:

Full Player Bios:

<https://boile.rs/2022WBBMedia>

<https://boile.rs/21-22WBBSchedule>

<https://boile.rs/21-22WBBStats>

<https://boile.rs/21-22WBBRoster>

IMPRESSIVE IMPROVEMENT

- The Boilermakers have seen quite an improvement across the board under first-year head coach Katie Gearlds.

NON-CONFERENCE WIN% BY FIRST-YEAR PURDUE COACHES				
Stat	20-21	21-22	Change	
Cassidy Hardin PPG/3PT PG	2.8/0.8	8.7/2.5	+5.9/+1.7	
Rickie Woltman PPG/RPG	1.0/0.8	6.9/5.6	+5.9/+4.8	
Brooke Moore FG%/3PT%	39.1%/32.1%	40.7%/36.3%	1.6%/4.2%	
Assists Per Game	13.9	15.8	+1.9	
Blocks Per Game	2.6	4.0	+1.4	
Points Allowed Per Game	73.5	67.2	-6.3	
Opp 3PT Per Game/3PT%	5.5/32.1%	4.9/27.8%	-0.6/-4.3%	

A SPARK OFF THE BENCH

- Senior Brooke Moore is already a contender for Sixth Woman of the Year in the Big Ten, averaging 18.9 minutes and 10.0 points per game this season with 14 outings in double figures.
- Moore is second on the team in scoring during Big Ten play with 11.6 points per game.
- Buying into Katie Gearlds' philosophy, Brooke Moore has made the transition from starter in 2020-21 to one of the first subs off the bench.
- Moore is the only player from the Big Ten to drop a pair of 20-point games off the bench this season - 22 vs. Maryland and at Michigan State.
- The Atlanta native ranks fifth in the nation in scoring at 10.0 points per game among players without a start.
- Moore's bond with Gearlds has helped the first-year head coach instill a new culture in the program.
- The senior earned a spot on the Big Ten Weekly Honor Roll after dropping 22 points on the road in the win against Michigan State.
- Moore is also one of Purdue's most active players in the NIL market.

WHAT'S UP SHAY

- Ra Shaya Kyle spent much of the offseason working on conditioning with Jason Pullara to extend her minutes, and it's already shown to start the year with career highs in points, rebounds and minutes played.
- Kyle has been sidelined with a lower leg injury since the Maryland game in December.
- The sophomore has jumped up to 11 points and 5.7 rebounds per game and already set career highs in points, rebounds and minutes per game.
- In addition to improvements in scoring and rebounding, Kyle is playing nearly 19.3 minutes per game, compared to 11.3 last year.
- The Marion, Ind., native is one of the Top-100 scorers in IHSAA history with 1,816 points behind a 52% clip. She had her number retired at Marion High School during the offseason.
- Kyle's cousin Dejah Cyrus, a 2019 NAIA All-American and two-time national champion, played for Katie Gearlds for four seasons at Marian.

THE RANKINGS

- The Boilermakers snapped a 19-game losing skid to ranked opponents with its 66-61 win over No. 17/22 Florida State. The Boilermakers received a vote in the AP Top 25 in week four after the win over the Seminoles.
- A mainstay in the Associated Press Poll from 1989-2014, the Boilermakers were last ranked during Week 2 of the 2014-15 season. Purdue received one vote in the AP Top-25 Week 4 Poll.
- During her playing days, Gearlds led Purdue to a high No. 4 in the country and went 23-22 against ranked teams.

REACHING 100

- The Boilermakers scored 101 points against Denver on Dec. 12, the first 100-point performance for the Boilermakers since scoring 109 against Central Michigan on Dec. 28, 2013.
- Purdue shot 63.3% from the field, good for eighth best in program history.
- Paced by Cassidy Hardin's seven 3-pointers, the Boilermakers hit 13 triples, tying for fourth most by a Purdue team.
- Seven different Boilermakers finished in double figures.

WENT ON A STREAK

- The Boilermakers went on a five-game winning streak to split the holiday break, posting a winning margin of 16.8 points.
- Purdue averaged 79.6 points per game during the stretch and shot a blistering 49.3% from the field with 8.4 triples per outing.
- Cassidy Hardin tallied 13 points per game, while Brooke Moore added 11.8 points at an impressive 57.5% shooting clip.
- Rickie Woltman nearly averaged a double-double with 11.2 points and 8.4 rebounds per game.

AN INSTANT CLASSIC

- In front of a national audience on FS1, Purdue and Indiana put on an instant classic that rejuvenated the in-state rivalry.
- Despite the loss, Purdue gave No. 6/5 Indiana everything it could handle in a game that featured 11 lead changes and nine ties.
- In addition to the incredible battle on the floor, Mackey had one of its largest crowds in recent memory with 8,505 showing why it's the best stadium in college basketball.

IN THE NON-CON

- The Boilermakers posted a 9-2 mark in non-conference games under first year head coach Katie Gearlds.
- With the win against North Alabama, Gearlds sealed the second best winning percentage by a first-year head coach, behind one-year head coach Marshal Reall in 1985-86.

NON-CONFERENCE WIN% BY FIRST-YEAR PURDUE COACHES					
Name	Season	NC W-L	%	Final Record	Postseason
Marsha Reall	1985-86	8-1	88.9	18-9	NA
Katie Gearlds	2021-22	9-2	81.8	-	-
Kristy Curry	2000-01	8-2	80.0	23-8	NCAA 2nd
Sharon Versyp	2006-07	11-3	78.6	31-6	NCAA Elite 8
Carolyn Peck	1997-98	7-3	70.0	23-10	NCAA Elite 8

BLANKED BUT NO PROBLEM

- Against No. 17/22 Florida State, the Boilermakers jumped out to a 26-10 lead in the first, but failed to score for the next 12:39 and falling on the wrong side of a 27-0 run by the Seminoles.
- Purdue did not score in the second quarter, a first in program history.
- Despite the massive run, the Boilermakers only trailed by seven at the break and by 11 at the largest gap.
- With a massive caveat, through research and responses from SIDs across the country, Purdue's win is believed to be only the third since the implementation of quarters where a team was blanked in a period and still won the game. If there are more, email imacdoug@purdue.edu, please.

SCORELESS QUARTERS IN WINS				
Scoreless Team	Opponent	Final Score	Date	Quarter
Purdue	Florida State	66-61	11/27/21	2nd (18-0)
Texas	Little Rock	66-56	12/6/15	3rd (11-0)
Eastern Illinois	Morehead State	67-62 (OT)	2/8/20	2nd (7-0)

OKAY JAY

- Jayla Smith made an impressive debut off the bench for the Boilermakers against Western Kentucky with 11 points and four steals in 27 minutes.
- The rookie was pivotal with six points in the fourth quarter against Marshall to help Purdue pull out the win.
- Since 2009-10, a Purdue freshman has recorded four steals just 14 times with Smith and Karissa McLaughlin (2017 vs. Central Michigan) doing so in their debuts.
- Smith scored over 1,000 points, won one IHSAA 4A State Championship (2020 over Layden's Northwestern) and was named Indiana Miss Basketball during her prep career.

A BASKETBALL FAMILY

- Madison Layden comes from a basketball family. Her mother Kathie and father Jeff were both standout stars at Evansville back in the 1990s.
- While at Evansville, Kathie is seventh in career assists and fourth in triples, and Jeff was named to the Missouri Valley All-Bench Team twice.
- As a head coach, Kathie has won five IHSAA State Championships, including two with Madison at Northwestern High School. She ranks second in IHSAA history in state championships.
- During Madison's career at Northwestern, which featured two state titles and three title game appearances, her mother was her head coach, father was an assistant and her grandfather, Dave, was another assistant coach.
- Kathie's first of three straight Class A state titles at Tri-Central came in 2003, mere hours before Katie Gearlds dropped a then-3A record 33 points to lead Beech Grove to a state championship.

KG'S JERSEY RETIRED

- During the week prior to the game against Miami, Katie Gearlds had her high school jersey retired by Beech Grove, a small community on the south side of Indianapolis (separate from Indy - touchy subject).
- Gearlds guided the Hornets to the 2003 IHSAA Championship, scoring 33 points to lift the title, won Indiana Miss Basketball and was named the MVP of the McDonald's All-America Game, alongside LeBron James.
- Gearlds ranks 11th in IHSAA history with 2,521 points.

INDIANA MISS BASKETBALL

- Jayla Smith is the 10th Indiana Miss Basketball to play at Purdue, winning the award in 2021 after a senior campaign of 19.5 points and 4.6 steals per game at Lawrence North.
- The long history of Purdue welcoming the state's top player extended back to 2003, when Katie Gearlds became the fifth honoree to pick West Lafayette.
- Madison Layden nearly added to the tally in 2020, only to be edged by Hamilton Southeastern and Oregon Duck Sydney Parrish.
- Purdue holds the record for most Indiana Miss Basketball winners, followed by Indiana, Notre Dame, Tennessee tied for second with four.

BOILERMAKER MISS BASKETBALL WINNERS

Year	Name	High School
1984	Sharon Versyp	Mishawaka
1991	Jennifer Jacoby	Rossville
1995	Stephanie White	Seeger
1998	Kelly Komara	Lake Central
2003	Katie Gearlds	Beech Grove
2005	Jodi Howell	Alexandria-Monroe
2008	Brittany Rayburn	Attica
2010	Courtney Moses	Oak Hill
2017	Karissa McLaughlin	Fort Wayne Homestead
2021	Jayla Smith	Lawrence North

OH CAPTAIN, MY CAPTAINS

- First-year head coach Katie Gearlds picked a trio of first-time captains for the 2021-22 roster in Madison Layden, Cassidy Hardin and Jeanae Terry.
- Layden is the first sophomore captain since FahKara Malone in 2007-08.
- The trio were named captains ahead of the 2021 Big Ten Women's Basketball Media Day in October.

THE NEXT GENERATION

- After hitting the recruiting trail hard in March, primarily focusing on the class of 2020/3, Katie Gearlds welcomed a trio of signees to the Boilermaker family on Nov. 10, the same day as the season opener.
- Lilly Stoddard, a 6-3 forward from Crown Point, Ind., is an Indiana Junior All-Star and 2021 IHSAA State Champion.
- Addison Potts, a 6-0 guard from Fort Myers, Fla., has played varsity ball since seventh grade and scored over 2,000 points in her prep career.
- Ainhwa Holzer, a 5-9 guard from Martigny, Switzerland, has extensive international experience and played in the Swiss Basketball League as an amateur for the last few seasons.
- Stoddard and Potts were both named McDonald's All-American Game nominees in early January.

PROBOILERS

- In addition to graduating two Rhodes Scholar finalists, doctors and lawyers, Purdue has sent its fair share of student-athletes to the professional level.
- Head coach Katie Gearlds played six professional seasons between the WNBA, Slovakia, Greece and Spain.
- Fifteen Boilermakers have played in the WNBA, last by Lindsay Wisdom-Hylton, current Boston College assistant coach, back in 2012.
- In addition to the 15 who reached the WNBA, 20 other Boilermakers have played professionally overseas.
- There are currently five former Boilermakers in the professional ranks.

#PROBOILERS			
Name	Team	Country	Purdue
Ae'Rianna Harris	Kangoeroes	Belgium	2017-20
KK Houser	Katarzynski	Poland	2010-14
Andreona Keys	Arad	Romania	2015-18
Samantha Osterello	Passalacqua Ragusa	Italy	2010-13
Aya Traore	Cordoba	Spain	2004-06

CASSIDY HARDIN

CAREER 3-POINTERS

Hardin	13.	145	
Next Up	12.	154	Beth Jones
Record Holder	1.	244	Karissa McLaughlin

SINGLE-SEASON 3-POINTERS

Hardin	7.	69	
Next Up	7.	69	Ukari Figgs
		69	Ashley Morrisette
Record Holder	1.	88	K. Gearlds (06-07) K. McLaughlin (18-19)

MADISON LAYDEN

SINGLE-SEASON 3-POINTERS

Layden		59	
Next Up	16.	60	Brittany Rayburn
Record Holder	1.	88	K. Gearlds (06-07) K. McLaughlin (18-19)

JEANAE TERRY

SINGLE-SEASON ASSISTS

Terry	6.	163	
Next Up	5.	167	MaChelle Joseph
Record Holder	1.	201	Lisa Jahner

JUNIOR ASSISTS

Terry	2.	163	
Next Up	1.	171	Erika Valek
Record Holder	1.	171	Erika Valek

JUNIOR ASSISTS PER GAME

Terry	1.	5.8	
Next Up	2.	5.5	MaChelle Joseph
Record Holder	1.	5.8	Jeanae Terry

SEASON ASSIST-TURNOVER RATIO

Terry	8.	1.85	
Next Up	7.	1.88	Jennifer Jacoby
Record Holder	1.	2.57	Katie Gearlds

USA TRIALS

- Madison Layden was named a trialist for the U19 United State Junior National Team ahead of the 2021 FIBA U19 World Cup.
- After spending three days at Metro State University in Denver, Colo., Layden fell just shy of reaching the final cuts for a squad that claimed the gold medal.
- Layden was the first Boilermaker to be called up for a national team tryout since Karissa McLaughlin received a bid in 2018-19.

PURDUE'S FIRST AUSSIE

- Abbey Ellis is the first Australian in Purdue Women's Basketball history.
- Despite standing just 5-foot-6, the Aussie has shown she's one of the loudest and most energetic players on the team.
- In just two seasons at Cal Poly, including a shortened season in 2020-21, she tallied 818 points over 53 games.
- Outside of basketball, Ellis is a proud supporter of Melbourne-based teams - Carlton (AFL), Melbourne Stars (Big Bash Cricket), Melbourne United (NBL).

RESPECT THE SPECS

- Madison Layden is in her second campaign after one of the better all-around freshman seasons in program history.
- The Kokomo native finished with 8.7 points, 3.2 rebounds, 3.0 assists and 2.1 steals per game in 2020-21.
- Layden was the only rookie from the Big Ten with at least 65 assists and 45 steals during the regular season, totaling 69 dimes and 48 swipes.
- Layden was one-of-nine freshmen nationally to average at least 8.5 points, 3.0 assists and 2.0 steals per game.
- On the defensive end, Layden finished with 48 steals as a freshman in the COVID-19 truncated season, still good for seventh by a rookie in program history.
- Connecting from the outside, Layden drained 45 3-points in her rookie season at a 40.5% clip, ranking ninth among freshmen with at least 40 triples in 2020-21.
- The 2020 Indiana Gatorade Player of the Year has worn glasses when playing in games ever since she was a kid.

ALL-AROUND ROOKIE YEAR

- Layden etched her name into the freshman-year charts at Purdue with her 2020-21 season, despite the shortened schedule.
- Appearing in the starting five for every game, aside from the opening two, Layden recorded a steal in 23 straight outings to start her career.

LAYDEN'S PLACE ON PURDUE FRESHMAN CHARTS

Stat	Total	Rank
3-Pointers Made	45	T5
Assists Per Game	3.0	T9
Total Steals	48	T7
Steals Per Game	2.1	2
Minutes Per Game	31.7	5

FRESH FACES

- The Boilermakers welcomed a trio of ranked rookies in the 2021 signing class - Jayla Smith (Lawrence North - Indiana), Skye Williams (Pickerington Central - Ohio) and Ava Learn (Our Lady of Lourdes - New York).
- Learn was tabbed the No. 153 player in the nation, the No. 41 guard from Girls Basketball Report. Smith was the No. 42 player in the nation, No. 13 guard and a 4-star recruit by Prospect Nation.
- Williams was tabbed was a 4-star recruit, the No. 93 player in the nation, the No. 38 guard and 91 rating by ESPN HoopGurlz
- The signing class was recognized by multiple national reports - No. 24 by ESPNW, No. 28 by Prospects Nation and No. 33 by All-Star Girls Basketball.

ROSTER FLIP

- The Boilermakers rolled into 2021-22 with a new-look roster, with six newcomers between a trio of freshmen and transfers.
- With the graduation of four players and two transfers out, the Boilermakers lost 52.5% points, 54.3% rebounding, 51.9% assists and 51.5% of minutes played from the 2021-22 roster.
- The freshman class features a trio of all-state performers in Jayla Smith (Indiana), Skye Williams (Ohio) and Ava Learn (New York).
- The Boilermakers hit the transfer portal hard after the 2020-21 season concluded, picking up a trio of names.
- Guard Abbey Ellis from Cal Poly joined Purdue after nearly 1,000 points for the Mustangs in two seasons. She's a native of Yallambie, Australia.
- Jeanae Terry traded in her jersey at Illinois for the Old Gold and Black. The Detroit native committed to the Boilermakers after two seasons as a starter for the Fighting Illini.
- Canadian international forward Mide Oriyomi joined the Boilermakers following a two-year spell at Northeastern.

TOWERING SUPPORT

- Purdue boast a pair of forwards in support roles with Rickie Woltman and Nyagoo Gony.
- While both saw limited minutes in 2020-21, the duo combined for 11.3 minutes, 1.5 points and 2.3 rebounds over the last three seasons.
- A point of emphasis for Katie Gearlds is putting the two forwards in positions that specifically benefit their abilities, rather than forcing them to fit a mold.

THE BEST IN THE BUSINESS

- The Voice of Purdue Women's Basketball and Purdue Football, Tim Newton has been named the 2021 National Sports Media Association Indiana Sportscaster of the Year.
- Newton has been calling Purdue Women's Basketball for 32 years and brought Boilermaker fans the call on nine Big Ten Championships, three Final Fours and the 1999 NCAA National Championship.
- He called his 900th women's basketball game at Purdue in 2019-20.
- A 27-year veteran with the football broadcast, Newton has been the play-by-play of Purdue Football for the last 12 seasons.
- Katie Gearlds credited Newton with a part in swaying her to come to Purdue after listening to him call games during her childhood, while at Purdue as a player and now as she struts the sidelines.

GIVING A VOICE

- During their trip to Maryland in December, the Boilermakers had a full schedule to promote their civic engagement.
- Purdue visited Arlington National Cemetery, with a long stop at the Tomb of the Unknown Soldier.
- The Boilermakers also took time to reflect at the Martin Luther King, Jr. and Abraham Lincoln Memorials.
- Purdue spent the morning before the game learning and celebrating at the National Museum of African American History and Culture.
- Prior to the season, the student-athletes were each asked one question - "What does the world need more of?" The answers are displayed on the backs of their shooting shirts this season.

INTERNATIONAL BOILERS

- Purdue's 2021-22 roster includes three international student-athletes - Mide Oriyomi (Canada), Abbey Ellis (Australia), Rokia Dombia (Mali).
- There have been just 10 international Boilermakers in program history from Russia, Canada, Mali, Senegal, England and Australia.
- Oriyomi is the fourth Canadian, while Dombia and Ellis are the first representatives from their countries.

THE NEXT GENERATION

Ainhoa Holzer (like a single Noah)

5-9 | G | Martigny, Switzerland

- Played for Switzerland at Senior, U16 and U18 levels in Euro Championships and World Cup.
- Named Rising Star of the Year in the Swiss Basketball League in 2021
- Spent one season at Christ the King in Queens, N.Y., and led the Royals to a state title
- Debuted in the SBL as a 15-year old in 2017, league average age of 26
- Accomplished jazz pianist

Addison Potts

6-0 | G | Fort Myers, Fla.

- Played varsity basketball since seventh grade
- Scored over 2,000 points in prep career
- Career 40% shooter and 34% from beyond the arc with an assist-to-turnover ratio above 5.0 and a steal-to-foul ratio of 5.76
- No. 103 player by ESPN HoopGurlz
- 3-time First Team News-Press SWFL All-Area, FACA 3A Player of the Year, Impact Academy Player of the Year and FACA 5A Player of the Year
- McDonald's All-American Game nominee

Lilly Stoddard

6-3 | F | Crown Point, Ind.

- No. 87 player by ESPN HoopGurlz
- Won three conference, three sectional, two regional and one IHSAA title
- Named an Indiana Junior All-Star in 2021, facing Jayla Smith in the annual all-star game in 2021
- Two-time Indiana All-State selection
- Won three league titles, three sectionals and one regional in volleyball
- Sister Abbey is a freshman at Butler
- McDonald's All-American Game nominee



GEARLDS' YEAR-BY-YEAR

Year	School	Overall	Conf.	Post.	Rank
2013-14	Marian	16-16	8-10	-	-
2014-15	Marian	28-6	14-4	NAIA R32	-
2015-16	Marian	32-6	16-2	NAIA Champ	No. 1
2016-17	Marian	35-3	17-1	NAIA Champ	No. 1
2017-18	Marian	32-3	17-1	NAIA R16	No. 8
2018-19	Marian	27-7	16-2	NAIA R32	No. 17
2019-20	Marian	31-3	16-2	NAIA R16	No. 13
2020-21	Marian	27-6	16-0	NAIA R32	No. 9
2021-22	Purdue	16-12	7-10	-	-
9th Year		244-62	7-10	-	-

GEARLDS' TIMELINE

2021-Present	Head Coach, Purdue
2013-21	Head Coach, Marian
2013	Toyota Huelva, Spain
2011-12	Orion Ibaizabal Galdakao, Portugal
2010	FEA Neas Halkindonas, Greece
2008	Kosit Kosice, Slovakia
2007-09	Seattle Storm, WNBA
2003-07	All-America Guard, Purdue
1999-03	All-America Guard, Beech Grove High School

What They're Saying About Katie Gearlds

Tamika Catchings - V.P. Basketball Operations/GM Indiana Fever

Katie knows how important basketball is in the state of Indiana from her time at Beech Grove High School as Miss Basketball in 2003 to her championship reign at Marian College. She has proven herself as a coach and as a player at the highest level of the game with the Seattle Storm. Through her experiences, I know she will bring a strong sense of accountability and success to her alma mater.

Katie Douglas - WNBA & NCAA Champion, Purdue Hall of Famer

Remembering the excitement Katie brought to the court in her playing days, I would expect nothing less than the same incredible energy and passion Katie has for the game to breed success and return Purdue Women's Basketball to the top as a National Champion.

Swin Cash - New Orleans Pelicans V.P. of Basketball Operations

I'm so happy for KG to get this opportunity to lead the Purdue Women's Basketball team. As teammates in Seattle, she was a tremendous leader who always brought an infectious energy and determination to the gym every day. I know she will bring the same passion and leadership to the Purdue Women's Basketball program.

Kristy Curry - Head Coach, Alabama Basketball

I am so, very excited and proud for Katie to be to be the next Boilermaker head coach! She was a fearless competitor, leader and consummate gym rat as a player, and I know these characteristics will make her a GREAT head coach. She is one of those unique individuals whose grit, passion and love for the game will be infectious with her student-athletes on the court, in the classroom and in the community. Katie is a winner, and without a doubt, will continue the proud tradition of Purdue women's basketball.

Kelly Komara - Associate Head Coach, Marquette Basketball

I couldn't be happier for Katie and for all of Boilermaker nation! Katie is a winner, period. Purdue women's basketball prides itself on toughness, integrity and the pursuit of excellence. Katie will bring all of that to our alma mater and more. I'm looking forward to seeing Mackey Arena rocking again!

Shereka Wright - Head Coach, UT-Arlington Basketball

I'm so excited for my former teammate to take over as Purdue's next Head Coach. She was a great player at Purdue and will be a great leader for the program. Our alma mater is in great hands! Boiler Up!

KAITE GEARLDS

HEAD COACH | 1ST SEASON AT PURDUE | 9TH SEASON OVERALL | PURDUE '07

Year	Overall	BIG	Non-Con.	BIG Tourney	NCAAs	Home	Road	Neutral	vs. Top-25	Unranked
2021-22	16-12	7-10	9-2	-	-	10-5	5-6	1-1	1-6	15-6
Totals	16-12	7-10	9-2	-	-	10-5	5-6	1-1	1-6	15-6
Pct.	.571	.412	.818	-	-	.667	.455	.500	.143	.714

COACHING EXPERIENCE

- Spent eight seasons taking Marian University winning back-to-back NAIA National Championships in 2016 and 2017.
- Went 228-50 record, an 82% clip with the Knights.
- Three-time NAIA National Coach of the Year, won 10 total Crossroads League titles and made seven appearances in the NAIA Tournament.
- Guided 12 WBCA NAIA All-America selections, compared to just five in the first 37 years of the program's existence.

PROFESSIONAL CAREER

- Played professionally over six seasons
- Spent three seasons in the WNBA with the Seattle Storm,
- Was taken with the seventh overall pick in the 2007 WNBA Draft, the highest selection ever from Purdue
- Two of her closest teammates and friends over the years are WNBA legend Sue Bird and fellow WNBA great and New Orleans Pelicans Vice President of Basketball Operations Swin Cash.

ALL-AMERICAN AT PURDUE CAREER

- Was a three-year starter from 2004-07.
- Ranks fourth in program history with 1,974 points and was the ninth fastest to join the 1,000-point club.
- Named a Legend of Mackey Arena during its 50th anniversary season.
- Won two Big Ten Tournament titles and never missed the NCAA Tournament with Gearlds in the squad
- Reached three Sweet 16s and one Elite Eight.
- Set the Purdue single-game record with 41 points at Wisconsin on Feb. 18, 2007, and scored 707 points to tie the single-season program record.
- 2007 Third Team AP All-America WBCA All-America Honorable Mention
- Four-time All-Big Ten and the 2004 Big Ten Freshman of the Year.
- Earned a bachelor's degree in sociology and minored in psychology and communications from Purdue in 2007.

ONE-OF-A-KIND PREP CAREER

- Attended Beech Grove High School.
- Named the Indiana Miss Basketball in 2003.
- Amassed 2,521 career points, good for sixth in IHSAA history.
- Averaged 30.1 points, 9.4 rebounds, 5.4 assists and 5.1 steals per game to lead Beech Grove High School to the 2003 Class 3A State Championship.
- Nike/WBCA All-America, First Team All-State and the Gatorade Indiana Player of the Year.
- A McDonald's All-American, was named the MVP of the McDonald's All-America Game the same season as a young talent from Akron, Ohio - LeBron James.

YOUNGEST COACHES

- At age 37 (born - Oct. 26, 1984) at the start of the season, Gearlds is one of the youngest coaches in Division I women's basketball.
- Out of 343 programs, there are only 29 head coaches younger than Gearlds, topped by Lipscomb's 29-year-old head coach Lauren Sumski.
- Gearlds is the second youngest Power 5 coach, behind Florida interim head coach Kelly Rae Finley at age 35.
- First season as the head coach of the Purdue women's basketball team.
- Elevated to the head job on Sept. 17, 2021, becoming the ninth coach in program history.

POWER 5 COACHES 40 & UNDER

Age	Name	School	Birthdate
36	Kelly Rae Finley	Florida (Interim)	4/27/1985
37	Katie Gearlds	Purdue	10/26/1984
38	Carolyn Kieger	Penn State	8/17/1983
38	Yolett McPhee-McCuin	Ole Miss	4/30/1983
39	Lindsay Whalen	Minnesota	5/9/1982
39	Marisa Moseley	Wisconsin	3/12/1982
39	Jennie Baranczyk	Oklahoma	2/22/1982
40	Kara Lawson	Duke	2/14/1981

KG Quips

Having a similar swagger she had in her playing days, Gearlds is always good for a quick quip and a motivational word for her players.

- "*Let's Ride*" - Gearlds' motto for the 2021-22 season. Have fun, play loose.
- "*Be Tough to Beat*" - Drive to compete, work to improve and stay together.
- "*Look good, feel good, play good*" - Play relaxed and with freedom.
- "*Let's not wait to be great*" - Trying to make an immediate positive impact on the culture, rather than waiting years to grow the program.

@katiegearlds4
@katiegearlds4

ELITE LEADERS

- Gearlds is the highest draft pick in Purdue history, going seventh overall to the Seattle Storm in 2007.
- She is one-of-seven current Division I head coaches who were also a Top-10 WNBA pick.
- The MVP of the 2003 McDonald's All-America Game alongside the boy's game honoree LeBron James, Gearlds is one-of-four former MVPs to be a head coach in 2021-22 and the only women's representative.

INSPIRED BY GREATNESS

- Gearlds has a deep bench of basketball legends who have touched and continue to influence her career.
- One of the few people who can say they've worked with two G.O.A.T.s, Gearlds was the MVP of the 2003 McDonald's All-America Game with LeBron James.
- Sue Bird, her teammate with the Storm and a mentor over the last 15 years, inspired Gearlds to go into coaching.
- She also shared the court in Seattle with Swin Cash (V.P. New Orleans Pelicans), Adia Barnes (Arizona head coach) and Lauren Jackson (owner Melbourne Boomers).
- She competed against Chris Paul in the skills challenge ahead of the 2003 McDonald's All-America Game.

AN INDIANA LEGEND

- One of the best products of Indiana basketball, Gearlds claimed a state title, a Big Ten championship and a national title with programs from the Crossroads State.
- Named Indiana Miss Basketball as a senior at Beech Grove in 2003, Gearlds guided the Hornets to a 3A state championship, setting a state record across all classes with 33 points in the final. Today, she ranks 11th in state history with 2,521 career points.
- As a Boilermaker from 2003-07, Gearlds reached the NCAA Tournament four times, won two Big Ten Tournament titles, sits fourth in Purdue history with 1,974 career points and holds the record for points in a season with 707 with Stephanie White.
- Following a six-year professional career, Gearlds took over the reins at Marian in Indianapolis, posting a 227-49 record over eight years, winning three NAIA Coach of the Year honors and claiming two national championships.

STILL ON THE CHARTS

- Nearly 15 years after her career ended, Katie Gearlds continues to appear in multiple single-game, season and career charts at Purdue. She still ranks in the Top-5 in 16 categories

PURDUE RECORD BOOK RANKINGS

Stat	Rank	Total	Year/Game
Single Game Points	1	41	Wisconsin, 2/18/07
Season Points	11	707	2006-07
Career Points	4	1,974	2004-07
Career Average	4	14.8	2004-07
Season 10+ Point Games	3	33	2006-07
Career 10+ Point Games	4	102	2004-07
Season 30+ Point Games	2	4	2006-07
Career 30+ Point Games	2	6	2004-07
Season Field Goals	2	250	2006-07
Career Field Goals	3	711	2004-07
Season 3-Pointers	11	88	2006-07
Career 3-Pointers	3	238	2004-07
Season Asst/TO	1	2.57	2005-06
Career Asst/TO	12	1.64	2004-07
Season Minutes	1	1,359	2006-07
Career Minutes	2	4,475	2004-07

TOP-10 WNBA PICKS & CURRENT DI HEAD COACHES

Name	School	Year - Pick, Team
Tina Thompson	Virginia	1997 - 1st, Houston
DeLisha Milton-Jones	Old Dominion	1999 - 4th, Los Angeles
Dawn Staley	South Carolina	1999 - 9th, Charlotte
Kara Lawson	Duke	2003 - 5th, Sacramento
Nicole Powell	UC Riverside	2004 - 3rd, Charlotte
Lindsay Whalen	Minnesota	2004 - 4th, Connecticut
Katie Gearlds	Purdue	2007 - 7th, Seattle
Laura Harper	Coppin State	2008 - 10th, Sacramento

MCDONALD'S ALL-AMERICA MVP & CURRENT DI HEAD COACH

Name	School	Year
Bobby Hurley	Arizona State	1989
Jerry Stackhouse	Vanderbilt	1993
Shaheen Holloway	Saint Peter's	1996
Katie Gearlds	Purdue	2003

2021-22 ROSTER

No.	Name	Yr.	Pos.	Ht.	Hometown/High School/Previous School
0	Brooke Moore	Sr.	G	5-7	Atlanta, Ga. (Henry County / Auburn)
1	Skye Williams	Fr.	G	5-10	Pickerington, Ohio (Pickerington Central)
2	Rokia Doumbia	Sr.	G	5-9	Bamako, Mali (IMG Academy / Arkansas)
3	Jayla Smith	Fr.	G	6-0	Indianapolis, Ind. (Lawrence North)
4	Mide Oriyomi	Jr.	G/F	6-0	Hamilton, Ontario (Kings Christian / Northeastern)
5	Cassidy Hardin	Sr.	G	5-10	Bargersville, Ind. (Center Grove)
10	Jeanae Terry	Jr.	G	5-11	Detroit, Mich. (Wayne Memorial / Illinois)
13	Ajah Stallings	Sr.	G	5-8	Indianapolis, Ind. (North Central)
14	Ava Learn	Fr.	G	6-1	Hyde Park, N.Y. (Our Lady of Lourdes)
23	Abbey Ellis	Jr.	G	5-6	Melbourne, Australia (Cal Poly)
24	Ra Shaya Kyle	So.	C	6-6	Marion, Ind. (Marion)
30	Nyagoo Gony	Sr.	F	6-2	Lincoln, Neb. (Lincoln)
33	Madison Layden	So.	G	6-1	Kokomo, Ind. (Northwestern)
35	Rickie Woltman	Jr.	F	6-3	St. Louis, Mo. (Incarnate Word)

Name	Position	Year at Purdue	Year Coaching	Alma Mater
Katie Gearlds	Head Coach	1st Year	9th Year	Purdue '07
Beth Couture	Associate Head Coach	6th Year	35th Year	Erskine '84
Michael Scruggs	Assistant Coach/Recruiting	3rd Year	14th Year	Tennessee '08
Alex Guyton	Assistant Coach	3rd Year	3rd Year	Purdue '12
Jason Pullara	Director of Strength & Conditioning	3rd Year		Purdue '01
Jessica Lipsett	Associate Director of Sports Medicine	19th Year		Illinois '00
Jaelen Nice	Graduate Assistant	1st Year		Purdue '21
Karmell Brown	Graduate Assistant	1st Year		Earlham '13



#0 // Brooke Moore
Senior // Guard
Atlanta, Ga.



#1 // Skye Williams
Freshman // Guard
Pickerington, Ohio



#2 // Rokia Doumbia
Senior // Guard
Bamako, Mali



#3 // Jayla Smith
Freshman // Guard
Indianapolis, Ind.



#4 // Mide Oriyomi
Junior // Guard/Forward
Hamilton, Ontario



#5 // Cassidy Hardin
Senior // Guard
Bargersville, Ind.



#10 // Jeanae Terry
Junior // Guard
Detroit, Mich.



#13 // Ajah Stallings
Junior // Guard
Indianapolis, Ind.



#14 // Ava Learn
Freshman // Guard
Hyde Park, N.Y.



#23 // Abbey Ellis
Junior // Guard
Yallambie, Australia



#24 // Ra Shaya Kyle
Sophomore // Center
Marion, Ind.



#30 // Nyagoo Gony
Senior // Forward
Lincoln, Neb.



#33 // Madison Layden
Sophomore // Guard
Kokomo, Ind.



#35 // Rickie Woltman
Junior // Forward
St. Louis, Mo.



Katie Gearlds
Head Coach
1st Season



Beth Couture
Associate Head Coach
6th Season



Michael Scruggs
Assistant Coach
3rd Season



Alex Guyton
Assistant Coach
3rd Season

Associate Head Coach Beth Couture

Alma Mater: Erskine '84

Season at Purdue/Career: 6th/35th

Select Experience: Purdue Assistant (16-19), Converse College - Head Coach (14-15), Butler - Head Coach (02-14), Presbyterian - Head Coach (89-02)

Select Highlights: 5 WNIT appearances and 4 20-plus win seasons at Butler, 6 NCAA Division II appearances, Kodak All-American during playing time at Erskine

Assistant Coach Michael Scruggs

Alma Mater: Tennessee '08

Season at Purdue/Career: 3rd/9th

Select Experience: Loyola-Chicago - Assistant (16-19), LSU - Director of Video Operations (12-14), Chattanooga - Assistant (09-11), Tennessee - Practice Player (04-08)

Select Highlights: Practice player at Tennessee during Candace Parker's career, winning two national titles, also learned from Nikki Fargas at LSU and Wes Moore

Assistant Coach Alex Guyton

Alma Mater: Purdue '12

Season at Purdue/Career: 3rd/3rd

Select Experience: Purdue - Director of Player Development (19-21), Eastern Illinois - Assistant (17-19), Carmel HS - Assistant (14-17)

Select Highlights: Played 124 games w/ won a pair of Big Ten Tournament titles, 3 NCAA Tournaments and an Elite Eight, coached Michigan's Amy Dilk while at Carmel

Associate Director of Sports Medicine Jessica Lipsett (Illinois '00)

19th season at Purdue, all with the women's basketball program • 2011 Indiana Athletic Trainers Association Trainer of the Year • Husband, Tanner, was the former WBB SID and now the Wrestling Director of Operations • Rumored to have magic healing powers

ALPHABETICAL

No.	Name	No.	Name
2	Rokia Doumbia	0	Brooke Moore
23	Abbey Ellis	4	Mide Oriyomi
30	Nyagoo Gony	3	Jayla Smith
5	Cassidy Hardin	13	Ajah Stallings
24	Ra Shaya Kyle	10	Jeanae Terry
33	Madison Layden	1	Skye Williams
14	Ava Learn	35	Rickie Woltman

PRONUNCIATIONS

Rokia Doumbia

ROW-key-ya DOOM-be-yuh

Nyagoo Gony

nah-YAH-gwah GOH-nee

Ra Shaya Kyle

No pause in first name

Ava Learn

AA-va

Mide Oriyomi

MEE-day (Like Origami)

Ajah Stallings

asia

Jeanae Terry

Jah-NAY

Beth Couture

COO-chur

Katie Gearlds

Gerals (soft-g)

BY LOCATION

Indiana	Michigan	Ohio
Cassidy Hardin	Jeanae Terry	Skye Williams
Madison Layden	Missouri	Australia
Ra Shaya Kyle	Rickie Woltman	Abbey Ellis
Jayla Smith	Nebraska	Canada
Ajah Stallings	Nyagoo Gony	Mide Oriyomi
Georgia	New York	Mali
Brooke Moore	Ava Learn	Rokia Doumbia

BY CLASS

Seniors	Juniors
Rokia Doumbia	Abbey Ellis
Nyagoo Gony	Mide Oriyomi
Cassidy Hardin	Jeanae Terry
Brooke Moore	Rickie Woltman
Ajah Stallings	Freshmen
Sophomores	Ava Learn
Ra Shaya Kyle	Jayla Smith
Madison Layden	Skye Williams

BY MAJOR

Biochemistry	Management
Cassidy Hardin	Rickie Woltman
Business	Pharmacy
Jayla Smith	Madison Layden, Ajah Stallings
Child Development	Political Science
Abbey Ellis	Skye Williams
Elementary Education	Psychology
Ava Learn	Brooke Moore, Mide Oriyomi
Exploratory Studies	Sociology
Nyagoo Gony	Jeanae Terry
International Business	Sports Management
Rokia Doumbia	Ra Shaya Kyle

BY HEIGHT

6-2 to 6-6	6-0 to 6-1	
Ra Shaya Kyle	6-6	Madison Layden
Rickie Woltman	6-3	Ava Learn
Nyagoo Gony	6-2	Jayla Smith
5-10 to 5-11		Mide Oriyomi
Jeanae Terry	5-11	5-8 to 5-9
Skye Williams	5-10	Rokia Doumbia
Cassidy Hardin	5-10	Ajah Stallings
5-6 to 5-7		
Brooke Moore	5-7	
Abbey Ellis	5-6	

2021-22 PURDUE WOMEN'S BASKETBALL GAME NOTES

PURDUE WHEN

	21-22	Under Gearlds		21-22	Under Gearlds		21-22	Under Gearlds
By Where Played/Previous Result			By Free Throws			By Ranked Opponent		
Plays at home	15 / 10-5	15 / 10-5	Makes 15 or more free throws	5 / 4-1	5 / 4-1	Plays a ranked team	6 / 1-5	6 / 1-5
Plays on the road	11 / 5-6	11 / 5-6	Attempts 20 or more free throws	5 / 4-1	5 / 4-1	Plays a team ranked 1-5	1 / 0-1	1 / 0-1
Plays at a neutral site	2 / 1-1	2 / 1-1	Shoots 80% or better at the line	9 / 5-4	9 / 5-4	Plays a team ranked 6-10	2 / 0-2	2 / 0-2
Wins the game before	16 / 8-8	16 / 8-8	Opp. attempts 20 or more free throws	6 / 2-4	6 / 2-4	Plays a team ranked 10-25	3 / 1-2	3 / 1-2
Loses the game before	11 / 7-4	11 / 7-4				Plays an unranked team	21 / 15-6	21 / 15-6
By In-Game Leads/Deficits			By Rebounding/Second Chance			By Day of the Week/Steam/TV		
Leads after the first quarter	15 / 12-3	15 / 12-3	Outrebounds Opp.	12 / 10-2	12 / 10-2	Plays on Sunday	11 / 6-5	11 / 6-5
Trails/Tied after the first quarter	12 / 3-9	12 / 3-9	Is outrebounded/Tied in Rebounding	16 / 6-10	16 / 6-10	Plays on Monday	2 / 1-1	2 / 1-1
Leads at the half	15 / 12-3	15 / 12-3	Grabs 10 or more offensive rebounds	14 / 6-8	14 / 6-8	Plays on Tuesday	1 / 1-0	1 / 1-0
Trails/Tied at the half	12 / 3-9	12 / 3-9	Scores 10 or more second-chance points	15 / 9-6	15 / 9-6	Plays on Wednesday	5 / 4-1	5 / 4-1
Leads after the third quarter	14 / 13-1	14 / 13-1	Gives up 10 or more offensive rebounds	17 / 9-8	17 / 9-8	Plays on Thursday	5 / 2-3	5 / 2-3
Trails/Tied after the third quarter	13 / 2-11	13 / 2-11	Allows 10 or more second-chance points	14 / 9-5	14 / 9-5	Plays on Friday	1 / 0-1	1 / 0-1
Plays an overtime game	1 / 0-1	1 / 0-1	Scores 30 or more points in the paint	13 / 9-4	13 / 9-4	Plays on Saturday	2 / 1-1	2 / 1-1
Leads with 2:00 left in regulation	15 / 14-1	15 / 14-1	Scores fewer than 29 points in the paint	14 / 6-8	14 / 6-8	Plays on television	5 / 3-2	5 / 3-2
Trails/Tied with 2:00 left in regulation	12 / 1-11	12 / 1-11	Allows 30 or more points in the paint	15 / 8-7	15 / 8-7	Plays on internet/webcast	21 / 12-9	21 / 12-9
Build up a lead of 10 or more	15 / 14-1	15 / 14-1	Allows fewer than 29 points in the paint	12 / 7-5	12 / 7-5			
Trail by 10 or more	11 / 1-10	11 / 1-10						
By Quarter/Half Scoring			By Assist/Turnovers			By Scoring Margin		
Scores 25 or more points in a quarter	7 / 6-1	7 / 6-1	Dishes out 20 or more assists	5 / 5-0	5 / 5-0	Margin is 5 points or fewer	6 / 4-2	6 / 4-2
Scores 9 or fewer points in a quarter	5 / 2-3	5 / 2-3	Assist on 70% or more of made field goals	7 / 6-1	7 / 6-1	Margin is between 6 and 10	7 / 5-2	7 / 5-2
Scores 40 or more in a half	13 / 11-2	13 / 11-2	Assist on 69% or less of made field goals	19 / 8-11	19 / 8-11	Margin is between 11 and 20	11 / 3-8	11 / 3-8
Scores 20 or fewer in a half	1 / 0-1	1 / 0-1	Has more assists than turnovers	12 / 9-3	12 / 9-3	Margin is between 21 and 30	1 / 1-0	1 / 1-0
Opp. scores 25 or more points in a quarter	5 / 1-4	5 / 1-4	Has 2-to-1 assist-to-turnover ratio	2 / 2-0	2 / 2-0	Margin is more than 31	2 / 2-0	2 / 2-0
Opp. scores 9 or fewer points in a quarter	5 / 3-2	5 / 3-2	Commits 15 or more turnovers	14 / 6-8	14 / 6-8			
Opp. scores 40 or more in a half	10 / 3-7	10 / 3-7	Commits 10 or fewer turnovers	5 / 3-2	5 / 3-2	By Purdue Scoring		
Opp. scores 20 or fewer in a half	2 / 1-1	2 / 1-1	Allows 20 or more points off turnovers	7 / 3-4	7 / 3-4	Scores 59 points or fewer	6 / 1-5	6 / 1-5
			Forces 15 or more turnovers	13 / 10-3	13 / 10-3	Scores between 60 and 69	10 / 4-6	10 / 4-6
			Scores 20 or more points off turnovers	5 / 5-0	5 / 5-0	Scores between 70 and 79	6 / 5-1	6 / 5-1
						Scores 80 or more	5 / 5-0	5 / 5-0
By Shooting Percentages			By Bench Points			By Opponent Scoring		
Shoots 50% or better	5 / 5-0	5 / 5-0	Bench scores 20 points or more	16 / 9-7	16 / 9-7	Holds Opp. to fewer than 50	-	-
Shoots 40% or better	16 / 13-3	16 / 13-3	Bench scores 10 or fewer points	2 / 2-0	2 / 2-0	Holds Opp. to 51-60	7 / 6-1	7 / 6-1
Shoots less than 40%	9 / 2-7	9 / 2-7	Scores more bench points	16 / 6-10	16 / 6-10	Holds Opp. to 61-70	9 / 6-3	9 / 6-3
Opp. shoots 40% or better	13 / 6-7	13 / 6-7	Scores equal/less bench points	11 / 10-1	11 / 10-1	Opp. scores 70 or more	11 / 3-8	11 / 3-8
Opp. shoots less than 40%	13 / 9-4	13 / 9-4						
Shoots better or same as Opp.	16 / 14-2	16 / 14-2	By Players in Double Figures			By Uniforms		
Shoots worse than Opp.	10 / 1-9	10 / 1-9	Has no players in double figures	-	-	Wearing White Uniforms	10 / 6-4	10 / 6-4
			Has one player in double figures	1 / 1-0	1 / 1-0	Wearing Black Uniforms	12 / 5-7	12 / 5-7
			Has two players in double figures	4 / 0-4	4 / 0-4	Wearing Gray Uniforms	1 / 1-0	1 / 1-0
By 3-Point Shooting			Has three players in double figures	14 / 8-6	14 / 8-6	Wearing Gold Uniforms	4 / 3-1	4 / 3-1
Makes 10 or more 3-pointers	6 / 3-3	6 / 3-3	Has four players in double figures	7 / 5-2	7 / 5-2	Wearing Pink Uniforms	-	-
Makes 7 or more 3-pointers	17 / 12-5	17 / 12-5	Has five or more players in double figures	2 / 2-0	2 / 2-0			
Makes 6 or fewer 3-pointers	10 / 3-7	10 / 3-7						
Attempts 25 or more 3-pointers	11 / 7-4	11 / 7-4						
Shoots over 35% from distance	9 / 7-2	9 / 7-2						
Opp. makes 7 or more 3-pointers	8 / 5-3	8 / 5-3						
Opp. makes 6 or fewer 3-pointers	19 / 11-8	19 / 11-8						

SPECIALTY STATS

Date	Opponent	-Biggest Lead-		Biggest Run		Lead Chang.	Ties	-Time in the Lead-				Off TO	Paint	2nd-Ch.	Fast B.	Bench	Fr.	So.	Jr.	Sr.
		Pur.	Opp.	Pur.	Opp.			Pur.	Opp.	Tied										
11/10	Western Kentucky	17	0	11	8	0	0	39:20	0:00	0:40	30-22	32-24	19-14	12-12	33-29	11	17	35	16	
11/14	Western Michigan	23	0	11	11	0	0	39:43	0:00	0:17	15-15	38-36	7-9	4-10	4-5	2	39	15	14	
11/17	Illinois State	17	6	10	7	1	2	35:41	2:12	3:07	20-16	30-34	10-10	13-3	16-24	0	32	31	13	
11/20	Dayton	6	18	9	9	5	4	6:57	27:58	5:05	8-14	34-36	10-13	1-10	14-11	1	30	18	13	
11/22	Marshall	10	0	6	6	0	2	38:47	0:00	1:13	14-22	20-32	21-13	0-10	15-21	7	22	28	13	
11/25	West Virginia	0	11	6	8	0	0	0:00	39:03	0:57	7-22	16-42	16-7	2-12	33-30	6	7	19	25	
11/27	Florida State	16	11	10	27	2	4	18:28	19:15	2:17	14-10	32-26	4-5	11-10	31-9	0	29	14	23	
12/1	Georgia Tech	7	8	7	9	7	6	21:29	14:38	3:53	10-7	24-28	5-10	11-6	15-2	4	21	20	8	
12/5	Ohio State	3	17	9	9	4	4	35:11	2:41	2:08	14-18	22-28	4-4	4-8	10-8	2	19	21	11	
12/8	Maryland	6	20	7	9	10	6	10:20	25:17	4:23	16-34	20-42	8-21	13-20	32-12	5	0	19	47	
12/12	Denver	35	3	10	7	3	0	38:20	1:26	0:14	29-8	36-26	8-11	13-4	26-13	11	10	40	40	
12/19	Miami	14	2	11	8	3	3	37:25	1:00	1:35	17-21	40-32	9-15	24-8	19-17	5	14	34	29	
12/21	North Alabama	34	0	14	6	0	1	39:28	0:00	0:32	21-6	52-24	12-14	6-6	36-20	2	13	30	41	
1/2	Rutgers	21	2	10	10	3	1	36:32	2:29	0:52	17-9	24-36	3-14	7-5	9-40	2	11	34	13	
1/9	Michigan State	13	5	12	7	13	8	19:57	13:33	6:30	23-11	26-34	7-22	16-1	26-21	4	12	25	28	
1/13	Iowa	2	16	5	8	5	3	3:34	35:22	1:04	12-15	28-50	13-2	0-2	18-4	4	11	34	17	
1/16	Indiana	8	7	7	9	11	9	26:37	10:33	7:50	12-9	38-20	13-9	0-0	25-0	7	15	23	23	
1/20	Illinois	30	3	16	12	10	4	31:45	5:10	4:05	12-23	26-30	5-9	17-19	30-30	16	19	34	20	
1/24	Michigan	2	17	7	9	5	2	1:13	37:47	1:00	14-11	26-54	14-19	6-0	20-14	4	13	27	22	
1/27	Minnesota	17	2	10	10	3	1	37:07	1:27	1:26	20-10	38-24	10-12	17-2	26-16	19	16	26	19	
1/30	Nebraska	6	22	10	13	1	1	7:00	32:01	0:59	13-11	24-34	12-6	8-4	37-31	23	3	17	23	
2/4	Northwestern	3	21	5	9	3	2	4:04	33:37	2:19	15-18	30-30	2-14	8-12	21-19	15	10	28	14	
2/6	Indiana	6	19	8	9	1	2	5:27	32:34	1:59	9-23	28-22	5-10	8-5	24-11	11	0	31	15	
2/9	Penn State	15	9	8	9	7	3	24:53	13:43	2:04	18-19	32-40	15-8	6-14	20-20	10	20	32	19	
2/13	Wisconsin	22	4	17	11	3	0	36:13	1:44	0:00	14-8	18-20	6-6	16-2	15-0	11	4	23	14	
2/17	Illinois	18	8	8	8	3	4	20:47	16:00	3:13	11-10	36-28	18-11	13-3	30-28	16	5	29	20	
2/20	Rutgers	15	5	10	6	12	6	26:06	10:00	3:54	15-4	28-34	12-6	12-6	23-21	17	15	29	9	
2/24	Northwestern	2	18	9	9	2	3	1:38	35:28	2:54	4-22	30-28	7-8	4-10	13-19	6	9	24	12	
2/27	Wisconsin																			
TBD	Big Ten Tournament																			
TBD	Big Ten Tournament																			
TBD	Big Ten Tournament																			

2021-22 PURDUE WOMEN'S BASKETBALL GAME NOTES

TEAM GAME-BY-GAME COMPARISON

All Games	W/L	FG-FGA	FG%	3P-3PA	3%	FT-FTA	FT%	Off.	Def.	Tot.	F	Pts.	Ast.	TO	Stl.	Blk.
Purdue	W	34-37	44.2	12-36	33.3	9-11	81.8	20	25	45	23	89	22	16	11	5
Findlay	89-64	21-48	43.8	6-12	50.0	16-24	66.7	6	23	29	14	64	12	25	7	5
Purdue	W	24-55	43.6	9-26	34.6	22-28	78.6	14	28	42	26	79	15	26	12	4
Western Kentucky	79-69	24-63	38.1	7-25	28.0	14-23	60.9	14	19	33	26	69	11	21	7	2
Purdue	W	29-64	45.3	9-25	36.0	3-4	75.0	7	25	32	18	70	24	14	9	4
Western Michigan	70-62	24-54	44.4	4-19	21.1	10-14	71.4	6	29	35	13	62	9	18	7	3
Purdue	W	28-53	52.8	9-19	47.4	11-16	68.8	9	21	30	16	76	17	16	8	8
Illinois State	76-64	25-56	44.6	4-13	30.8	10-11	90.9	11	18	29	15	64	7	18	5	2
Purdue	L	20-52	38.5	3-12	25.0	19-29	65.5	9	21	30	20	62	12	15	3	6
Dayton	78-62	29-61	47.5	5-18	27.8	15-21	71.4	15	26	41	21	78	14	14	5	7
Purdue	W	21-54	38.9	7-21	33.3	21-26	80.8	16	22	38	15	70	13	21	6	3
Marshall	70-60	22-58	37.9	1-17	5.9	15-18	83.3	14	18	32	23	60	6	19	9	3
Purdue	L	20-58	34.5	10-30	33.3	7-10	70.0	17	21	38	20	57	13	24	6	5
West Virginia	65-57	27-57	47.4	2-7	28.6	9-14	64.3	13	23	36	15	65	15	16	11	5
Purdue	W	25-62	40.3	12-33	36.4	4-5	80.0	6	28	34	17	66	19	10	2	3
Florida State	66-61	24-54	44.4	4-13	30.8	9-12	75.0	4	31	35	15	61	10	13	2	4
Purdue	W	18-51	35.3	2-11	18.2	15-21	71.4	4	23	27	20	53	13	13	6	4
Georgia Tech	53-52	19-55	34.5	3-17	17.6	11-20	55.0	14	31	45	22	52	14	18	3	2
Purdue	L	21-71	29.6	6-36	16.7	5-7	71.4	13	23	36	19	53	9	16	7	4
Ohio State	70-53	25-50	50.0	7-16	43.8	13-23	56.5	5	36	41	13	70	12	22	3	4
Purdue	L	28-58	48.3	12-32	37.5	3-5	60.0	12	19	31	17	71	15	23	4	3
Maryland	86-71	33-73	45.2	4-15	26.7	16-20	80.0	23	19	42	10	86	19	13	10	3
Purdue	W	38-60	63.3	13-26	50.0	12-14	85.7	6	27	33	14	101	23	12	13	3
Denver	101-68	24-62	38.7	8-22	36.4	12-19	63.2	14	17	31	10	68	16	16	4	2
Purdue	W	28-69	40.6	7-24	29.2	19-24	79.2	18	24	42	14	82	23	13	10	2
Miami	82-76	30-66	45.5	9-30	30.0	7-13	53.8	14	24	38	22	76	16	18	5	5
Purdue	W	37-67	55.2	8-21	38.1	4-9	44.4	13	34	47	7	86	26	13	6	4
North Alabama	86-53	21-66	31.8	8-31	25.8	3-4	75.0	9	19	28	13	53	19	13	6	2
Purdue	W	20-50	40.0	6-27	22.2	14-16	87.5	3	26	29	18	60	14	15	7	5
Rutgers	60-58	22-58	37.9	0-7	0.0	14-18	77.8	10	23	33	18	58	7	15	10	2
Purdue	W	24-52	46.2	8-22	36.4	13-18	72.2	10	23	33	14	69	16	17	8	4
Michigan State	69-59	23-63	36.5	2-18	11.1	11-16	68.8	18	18	36	17	59	13	14	7	2
Purdue	L	26-63	36.5	6-23	26.1	14-17	82.4	10	22	32	26	66	14	15	8	3
Iowa	79-66	26-53	49.1	0-15	0.0	27-30	90.0	4	30	34	21	79	19	14	5	1
Purdue	L	26-68	38.2	3-18	16.7	13-16	81.3	11	29	40	18	68	7	9	4	5
Indiana	73-68 (OT)	27-63	42.9	6-16	37.5	13-18	72.2	10	32	42	14	73	13	11	4	6
Purdue	W	33-61	54.1	15-23	65.2	8-12	66.7	9	29	38	14	89	17	14	8	3
Illinois	89-67	24-63	38.1	6-18	33.3	13-19	68.4	12	21	33	9	67	8	12	9	3
Purdue	L	25-65	38.5	8-24	33.3	8-12	66.7	11	20	31	19	66	11	9	7	3
Michigan	79-66	31-64	48.4	3-14	21.4	14-17	82.4	14	30	44	13	79	23	11	2	6
Purdue	W	32-73	43.8	9-30	30.0	7-9	77.8	10	33	43	20	80	19	9	9	3
Minnesota	80-66	23-66	34.8	8-22	36.4	12-14	85.7	8	30	38	13	66	14	15	5	2
Purdue	L	25-69	36.2	10-31	32.3	6-13	46.2	15	23	38	20	66	15	13	9	1
Nebraska	66-81	29-58	50.0	11-20	55.0	12-15	75.0	8	33	41	14	81	22	18	8	6
Purdue	L	25-55	45.5	9-23	39.1	8-11	72.7	6	21	27	24	67	17	16	7	6
Northwestern	67-80	26-61	42.6	5-18	27.8	23-28	82.1	16	25	41	14	80	10	12	11	1
Purdue	L	23-60	38.3	4-14	28.6	7-7	100.0	8	30	38	20	57	7	18	8	9
Indiana	57-64	24-62	38.7	4-11	36.4	12-16	75.0	11	29	40	7	64	9	12	8	2
Purdue	W	31-59	52.5	5-16	31.3	14-16	87.5	12	28	40	13	81	20	24	6	4
Penn State	81-77	28-67	41.8	6-17	35.3	15-16	93.8	10	17	27	16	77	15	14	16	1
Purdue	L	18-59	30.5	5-22	22.7	11-13	84.6	12	26	38	18	52	11	12	5	4
Wisconsin	52-54	18-50	36.0	6-18	33.3	12-17	70.6	5	30	35	11	54	14	14	4	2
Purdue	W	26-73	35.6	4-23	17.4	14-19	73.7	18	27	45	21	70	17	10	7	1
Illinois	70-54	20-54	37.0	1-13	7.7	13-26	50.0	12	28	40	19	54	9	17	3	3
Purdue	W	26-60	43.3	7-30	23.3	11-13	84.6	8	25	33	12	70	17	10	12	1
Rutgers	70-59	22-51	43.1	4-14	28.6	11-16	68.8	7	25	32	15	59	11	17	4	3
Purdue	W	22-50	44.0	5-17	29.4	2-3	66.7	7	28	35	18	51	18	22	2	8
Northwestern	51-68	24-65	36.9	9-28	32.1	11-16	68.8	15	22	37	12	68	20	7	11	4
Purdue																
Wisconsin																
Purdue																
Big Ten																
Purdue																
Big Ten																
Purdue																
Big Ten																

2021-22 PURDUE WOMEN'S BASKETBALL GAME NOTES

PURDUE & OPPONENT SEASON HIGHS/LOWS

Stat	Purdue High	Purdue Low	Opp. High	Opp. Low
Points	101 Denver (12/12/2021)	51 at Northwestern (2/24/2022)	86 at Maryland (12/08/2021)	52 Georgia Tech (12/01/2021)
Field Goals Made	38 Denver (12/12/2021)	18 2x last at Wisconsin (2/13/2022)	33 at Maryland (12/08/2021)	18 at Wisconsin (2/13/2022)
Field Goal Attempts	73 Minnesota (01/27/2022)	50 Rutgers (01/02/2022)	73 at Maryland (12/08/2021)	50 2x last at Wisconsin (2/13/2022)
Field Goal Percentage	.633 (38-60) Denver (12/12/2021)	.305 (18-59) at Wisconsin (2/13/2022)	.500 (25-50) Ohio St. (12/05/2021)	.318 (21-66) North Ala. (12/21/2021)
3-Pointers Made	15 at Illinois (01/20/2022)	2 Georgia Tech (12/01/2021)	9 2x last at Northwestern (2/24/2022)	0 2x last Iowa (01/13/2022)
3-Pointers Attempted	36 Ohio St. (12/05/2021)	11 Georgia Tech (12/01/2021)	31 North Ala. (12/21/2021)	7 2x last Rutgers (01/02/2022)
3-Point Percentage	.652 (15-23) at Illinois (01/20/2022)	.167 (6-36) Ohio St. (12/05/2021)	.438 (7-16) Ohio St. (12/05/2021)	.000 2x last (0-15) Iowa (01/13/2022)
Free Throws Made	22 at Western Ky. 11/10/2021	2 at Northwestern (2/24/2022)	27 Iowa (01/13/2022)	3 North Ala. (12/21/2021)
Free Throws Attempted	29 vs. Dayton, 11/20/21	3 at Northwestern (2/24/2022)	30 Iowa (01/13/2022)	4 North Ala. (12/21/2021)
Free Throw Percentage	1.000 (7-7) at Indiana (02/06/2022)	.444 (4-9) North Ala. (12/21/2021)	.909 (10-11) at Illinois State, 11/17/21	.538 (7-13) Miami (OH) (12/19/2021)
Rebounds	47 North Ala. (12/21/2021)	27 2x last vs. Northwestern (2/4/2022)	45 Georgia Tech (12/01/2021)	28 North Ala. (12/21/2021)
Assists	26 North Ala. (12/21/2021)	7 2x last at Indiana (02/06/2022)	23 at Michigan (01/24/2022)	6 Marshall (11/22/2021)
Steals	13 Denver (12/12/2021)	2 2x last at Northwestern (2/24/2022)	16 Penn State (02/09/2022)	2 2x last at Michigan (01/24/2022)
Blocks	9 at Indiana (02/06/2022)	2 Miami (OH) (12/19/2021)	7 Dayton (11/20/2021)	1 2x last vs. Northwestern (2/4/2022)
Turnovers	26 at Western Ky. 11/10/2021	9 3x last Minnesota (01/27/2022)	22 Ohio St. (12/05/2021)	7 at Northwestern (2/24/2022)
Fouls	26 2x last Iowa (01/13/2022)	7 North Ala. (12/21/2021)	26 at Western Ky. 11/10/2021	7 at Indiana (02/06/2022)

Stat	Purdue Ind. High	Opponent Ind. High
Points	25 Cassidy Hardin vs Denver (12/12/2021)	32, Naz Hillmon at Michigan (01/24/2022)
Field Goals Made	9, 2x last Abbey Ellis at Illinois State, 11/17/21	12 2x last Naz Hillmon at Michigan (01/24/2022)
Field Goals Attempted	18 Brooke Moore vs Indiana (01/16/2022)	24 Makenna Marisa vs. Penn State (02/09/2022)
3-Pointers Made	7 Cassidy Hardin vs Denver (12/12/2021)	6 Aaliyah Nye at Illinois (01/20/2022)
3-Pointers Attempted	16 Madison Layden vs Ohio St. (12/05/2021)	11 Jade Moore vs North Ala. (12/21/2021)
Free Throws Made	9 2x last Jeanae Terry vs Miami (OH) (12/19/2021)	14 Caitlin Clark vs. Iowa (1/13/2022)
Free Throws Attempted	12 Jeanae Terry vs Miami (OH) (12/19/2021)	16 Caitlin Clark vs. Iowa (1/13/2022)
Rebounds	17 Jeanae Terry at Wisconsin (2/13/2022)	20 Lorela Cubaj vs Georgia Tech (12/01/2021)
Assists	12 Jeanae Terry vs Minnesota (01/27/2022)	11 Hina Suzuki vs North Ala. (12/21/2021)
Steals	5, Abbey Ellis, vs. Western Michigan, 11/14/21	6 Veronica Burton vs. Northwestern (02/04/2022)
Blocks	4 Rickie Woltman at Illinois State, 11/17/21	4 2x last Amani Freeman vs Miami (OH) (12/19/2021)

MARGIN OF VICTORY/DEFEAT

	1	2	3	4	5	6	7	8	9	10	11	12	13	14	15	16	17	18	19	20	21+
Purdue	1	1		1	1	1		1		3	1	1		1							3
Opponent		1			1		1	1					3		2	1	2				
When Leading											When Trailing										
Largest Margin of Victory	33, vs. Denver, 12/12/21, vs. North Alabama, 12/21/21										Largest Margin of Defeat										
Largest Overall Lead	35, vs. Denver, 12/12/21										Largest Overall Deficit										
Largest Halftime Lead	20, at Wisconsin, 2/13/22										Largest Halftime Deficit										
Largest Lead in a Loss	22, at Wisconsin, 2/13/22										Largest Deficit Overcome to Win										
Largest Halftime Lead in a Loss	20, at Wisconsin, 2/13/22										Largest Halftime Deficit in a Win										
Largest Purdue Run	17, at Wisconsin, 2/13/22										Largest Opponent Run										

INDIVIDUAL SINGLE-GAME RECORDS

POINTS				
Overall	41	Katie Gearlds	at Wisconsin	2/18/07
Senior	41	Katie Gearlds	at Wisconsin	2/18/07
Junior	37	MaChelle Joseph	at Michigan State	2/15/91
Sophomore	40	Shereka Wright	at Michigan	2/17/02
Freshman	34	Leslie Johnson	at Vanderbilt	12/5/93

FIELD GOALS				
Overall	16	MaChelle Joseph	at Michigan State	2/15/91
Senior	14	Jannon Roland	at Ohio state	1/23/97
Junior	16	MaChelle Joseph	at Michigan State	2/15/91
Sophomore	15	Shereka Wright	at Michigan	2/17/02
Freshman	13	Leslie Johnson	vs. Northwestern	2/27/94

3-POINTERS				
Overall	12	Brittany Rayburn	at Minnesota	1/12/12
Senior	12	Brittany Rayburn	at Minnesota	1/12/12
Junior	7	Karissa McLaughlin	at Michigan State	1/30/20
Sophomore	9	2x, Karissa McLaughlin	vs. Northwestern	2/17/19
Freshman	6	5x, Madison Layden	at Iowa	1/18/21

FREE THROWS MADE				
Overall	16	Shereka Wright	vs. Penn State	1/16/03
Senior	13	2x, Shereka Wright	at Northwestern	2/15/04
Junior	16	Shereka Wright	vs. Penn State	1/16/03
Sophomore	14	3x, Courtney Moses	at Northwestern	1/26/12
Freshman	14	Leslie Johnson	vs. Ohio State	2/13/94

REBOUNDING				
Overall	25	Leslie Schultz	at Miami (OH)	12/2/81
Senior	20	Joy Holmes	at Wisconsin	1/27/91
Junior	25	Leslie Schultz	at Miami (OH)	12/2/81
Sophomore	20	Cathery Tyree	at Michigan State	1/11/85
Freshman	23	Natasha Cender	vs. Michigan	2/7/76
Offensive	12	Joy Holmes	vs. Minnesota	2/10/91
Defensive	16	2x, Whitney Bays	at Dayton	12/7/14

ASSISTS				
Overall	16	MaChelle Joseph	vs. Northern Illinois	3/22/92
Senior	16	MaChelle Joseph	vs. Northern Illinois	3/22/92
Junior	14	Lisa Jahner	vs. Michigan	3/7/87
Sophomore	12	MaChelle Joseph	vs. New Mexico State	12/29/89
Freshman	11	3x, Karissa McLaughlin	vs. Penn State	1/28/18

BLOCKS				
Overall	11	Danielle Campbell	vs. Butler	11/17/07
Senior	9	Ae'Rianna Harris	at #5 South Carolina	12/15/19
Junior	11	Danielle Campbell	vs. Butler	11/17/07
Sophomore	7	3x, Ae'Rianna Harris	vs. Lamar	11/18/17
Freshman	7	2x, Nora Kiesler	at Penn State	1/30/16

STEALS				
Overall	12	Joy Holmes	vs. Minnesota	1/13/89
Senior	9	Michelle Duhart	vs. Michigan State	2/24/00
Junior	10	Cherelle george	vs. South Carolina	11/26/05
Sophomore	12	Joy Holmes	vs. Minnesota	1/13/89
Freshman	8	FahKara Malone	vs. Illinois	2/8/07

POINT MARGIN | POINTS SCORED RECORDS

IN games decided by 1 point	1-0 /28-22
Last win: 12/1/21 vs. Georgia Tech (53-52)	
Last loss: 03/04/16 vs. Michigan State (64-65)	

IN games decided by 2 points	1-1 /41-32
Last win: 03/15/18 at IUPUI (48-46)	
Last loss: 2/13/22 at Wisconsin (54-52)	

IN games decided by 3 points	/40-29
Last win: 2/13/20 at Wisconsin (62-59)	
Last loss: 2/21/21 at Michigan State (76-73)	

IN games decided by 4 points	1-0 /32-18
Last win: 2/9/22 vs. Penn State (81-77)	
Last loss: 02/08/18 vs. Minnesota (74-78)	

IN games decided by 5 points	1-1 /31-25
Last win: 11/27/21 vs. Florida State (66-61)	
Last loss: 1/16/22 vs. Indiana (73-68)	

IN games decided by 6 points	1-0 /23-31
Last win: 12/19/21 vs. Miami (82-76)	
Last loss: 1/18/21 at Iowa (87-81)	

IN games decided by 7 points	0-1/19-21
Last win: 12/21/19 vs. Bowling Green (81-74)	
Last loss: 2/6/22 at Indiana (64-57)	

IN games decided by 8 points	1-1 /36-15
Last win: 11/14/21 vs. Western Michigan (70-62)	
Last loss: 11/25/21 vs. West Virginia (65-57)	

IN games decided by 9 points	/37-23
Last win: 3/5/20 vs. Michigan State (72-63)	
Last loss: 12/16/18 vs. South Carolina (73-82 20T)	

IN games decided by 10 points	3-0 /46-19
Last win: 1/9/22 at Michigan State (69-59)	
Last loss: 1/31/21 vs. Penn State (80-70)	

IN games decided by 11-19 points	3-8 /286-177
Last win: 2/20/22 at Rutgers (70-59)	
Last loss: 2/24/22 at Northwestern (68-51)	

IN games decided by 20-29 points	1-0 /154-67
Last win: 1/20/22 at Illinois (89-67; +22)	
Last loss: 2/25/21 vs. Maryland (88-59; -29)	

IN games decided by 30-39 points	2-0 / 80-25
Last win: 12/21/21 vs. North Alabama (86-53; +33)	
Last loss: 1/10/20 at No. 12 Maryland (83-46; -37)	

IN games decided by 40-49 points	/30-6
Last win: 11/07/18 vs. Ball State (80-38; +42)	
Last loss: 2/25/20 at No. 7 Maryland (88-45; -43)	

IN games decided by 50-59 points	/7-1
Last win: 11/18/01 vs. E. Illinois (89-33; +56)	
Last loss: 01/16/08 vs. Connecticut (50-100; -50)	

IN games decided by 60-69 points	/6-0
Last win: 12/10/15 vs. Incarnate Word (95-27; +68)	
Last loss: NA	

IN games decided by 70-79 points	/1-0
Last win: 11/28/02 vs. Sav. St. (103-25; +78)	
Last loss: NA	

Record When Scoring 20-29 points	/0-1
Last win: NA	
Last loss: 02/07/76 vs. Ohio State (28-61)	

Record When Scoring 30-39 points	/0-8
Last win: NA	
Last loss: 12/11/11 vs. Notre Dame (38-66)	

Record When Scoring 40-49 points	/5-68
Last win: 03/15/18 at IUPUI (48-46)	
Last loss: 2/11/21 vs. No. 12 Michigan (62-49)	

Record When Scoring 50-59 points	1-5 /83-172
Last win: 12/1/21 vs. Georgia Tech (53-52)	
Last loss: 2/24/22 at Northwestern (68-51)	

Record When Scoring 60-69 points	3-6 /249-185
Last win: 1/9/22 at Michigan State (69-59)	
Last loss: 2/4/22 vs. Northwestern (80-67)	

Record When Scoring 70-79 points	5-1/301-70
Last win: 2/20/22 at Rutgers (70-59)	
Last loss: 12/8/21 at Maryland (86-71)	

Record When Scoring 80-89 points	5-0 / 178-13
Last win: 2/9/22 vs. Penn State (81-77)	
Last loss: 2/18/21 at Ohio State (100-85)	

Record When Scoring 90-99 points	/62-2
Last win: 12/20/20 at Penn State (91-87)	
Last loss: 01/26/96 at Wisconsin (95-98 20T)	

Record When Scoring 100-109 points	1-0 /15-0
Last win: 12/12/21 vs. Denver (101-68)	
Last loss: NA	

Record When Scoring 110-119 points	/2-0
Last win: 03/12/94 at Michigan (110-51)	
Last loss: NA	

Record When Scoring 120-129 points	/1-0
Last win: 12/08/90 vs. Kent State (129-81)	
Last loss: NA	

Record When Allowing 20-29 points	/6-0
Last win: 12/11/16 vs. NCCU (61-27)	
Last loss: NA	

Record When Allowing 30-39 points	/31-0
Last win: 11/14/19 at Chattanooga (66-34)	
Last loss: NA	

Record When Allowing 40-49 points	/155-4
Last win: 11/29/19 vs. Drake (67-47)	
Last loss: 2/21/15 vs. Illinois (46-47)	

Record When Allowing 50-59 points	5-1 / 326-48
Last win: 2/20/22 at Rutgers (70-59)	
Last loss: 2/13/22 at Wisconsin (54-52)	

Record When Allowing 60-69 points	8-3 / 274-155
Last win: 1/27/22 vs. Minnesota (80-66)	
Last loss: 2/24/22 at Northwestern (68-51)	

Record When Allowing 70-79 points	2-5 /93-190
Last win: 2/9/22 vs. Penn State (81-77)	
Last loss: 1/24/22 at Michigan (79-66)	

Record When Allowing 80-89 points	0-3 / 10-89
Last win: 12/20/20 at Penn State (91-87)	
Last loss: 2/4/22 vs. Northwestern (80-67)	

Record When Allowing 90-99 points	/1-33
Last win: 12/28/13 vs. Central Michigan (109-97)	
Last loss: 01/17/16 at Ohio State (70-90)	

Record When Allowing 100-109 points	/0-4
Last win: NA	
Last loss: 2/18/21 at Ohio State (100-85)	

Record When Allowing 110-119

2021-22 PURDUE WOMEN'S BASKETBALL GAME NOTES

THE LAST TIME

TEAM SCORING (GAME)

Won by 40+:	42 (80-38) at Ball State (11/7/18)
Won by 40+ (Big Ten):	43 (88-45) vs. Nebraska (1/26/17)
Lost by 20+:	29 (88-59) vs. No. 8 Maryland (2/25/21)
Lost by 30+:	37 (83-46) at No. 12 Maryland (1/10/21)
Scored 90+:	101 vs. Denver (12/12/21)
Scored 90+ (Big Ten):	91 at Penn State (12/20/20)
Scored 100+:	101 vs. Denver (12/12/21)
Scored 100+ (Big Ten):	110 (110-51) at Michigan (3/12/94)
Scored 40 or Fewer:	40 (40-86) vs. Connecticut (11/24/18)
Scored 50 or Fewer:	49 (62-49) vs. Michigan (2/11/21)
Scored 50 or Fewer and Won:	48 (48-46) at IUPUI (3/15/18)
Allowed 90+:	100 at Ohio State (2/18/21)
Allowed 90+ (Big Ten):	100 at Ohio State (2/18/21)
Allowed 100+:	100 at Ohio State (2/18/21)
Allowed 50 or Fewer:	50, at Ohio State (12/28/19)
Allowed 40 or Fewer:	38 at Ball State (11/7/18)

TEAM SCORING (HALF)

Scored 60 in the First Half:	68 vs. Kent State (12/8/90)
Scored 60 in the Second Half:	60 vs. South Alabama (12/27/94)
Scored 15 Points or Less:	15 (1st) vs. No. 18 Indiana (1/14/21)
Scored 20 Points or Less:	17 (2nd) at Wisconsin (2/13/22)
Allowed 50+:	50 (2nd) at Maryland (12/8/21)
Allowed 15 Points or Less:	15 (1st) at Wisconsin (2/13/22)
Allowed 20 Points or Less:	15 (1st) at Wisconsin (2/13/22)

TEAM SCORING (QUARTER)

Scored 30+:	31 (3rd) vs. Buffalo (12/9/20)
Scored 25+:	25 (2nd) vs. Illinois (2/17/22)
Scored 10 Points or Less:	7 (1st) vs. Illinois (2/17/22)
Scored 5 Points or Less:	0 (2nd) vs. Florida State (11/27/21)
Allowed 30+:	32 (4th) vs. Penn State (2/9/22)
Allowed 25+:	32 (4th) vs. Penn State (2/9/22)
Allowed 10 Points or Less:	7 (3rd) vs. Illinois (2/17/22)
Allowed 5 Points or Less:	2 (1st) at Wisconsin (2/13/22)

TEAM SHOOTING

Shot 65% or Higher:	.735 (36-59) vs. Penn State (1/28/18)
Shot 60% or Higher:	.636 (38-60) vs. Denver (12/12/21)
Shot 55% or Higher:	.552 (37-67) vs. North Alabama (12/21/21)
Shot 50% or Higher:	.525 (31-59) vs. Penn State (2/9/22)
Shot 30% or Lower:	.296 (21-71) vs. Ohio State (12/5/21)
Shot 25% or Lower:	.241 (13-54) at No. 12 Maryland (1/10/20)
Shot 35% or Lower and Won:	.308 (20-65) vs. Wisconsin (1/21/21)
Opponent Shot 55% or Higher:	.582 (39-67) at Ohio State (2/18/21)
Opponent Shot 50% or Higher:	.500 (25-50) vs. Ohio State (12/5/21)
Opponent Shot 30% or Lower:	.295 (23-78) vs. Michigan State (3/5/20)
Opponent Shot 25% or Lower:	.242 (16-66) at Rutgers (2/19/17)

TEAM 3-POINT SHOOTING

Made 10+:	10 at Nebraska (1/30/22)
Made 12+:	15 at Illinois (1/20/22)
Made 15+:	15 vs. Central Michigan (12/28/13), at Illinois (1/20/22)
Made 0:	0 vs. Valparaiso (12/6/20)
Attempted 25+:	30 at Rutgers (2/20/22)
Attempted 30+:	30 at Rutgers (2/20/22)
Attempted Five or Less:	4 vs Boston College (12/3/15)
Shot 50%+:	.652 (15-23) at Illinois (1/20/22)
Shot 60%+:	.652 (15-23) at Illinois (1/20/22)

TEAM FREE THROW SHOOTING

Made 25+:	26 vs. Green Bay (3/17/17)
Made 30+:	32 vs. DePaul (11/21/10)
Made Five or Less:	2 at Northwestern (2/24/22)
Made All Attempted:	7-7 at No. 5 Indiana (2/6/22)
Attempted 30+:	31 vs. North Alabama (11/29/20)
Attempted 40+:	41 vs. Minnesota (1/18/04)
Attempted 10 or Less:	3 at Northwestern (2/24/22)
Attempted Five or Less:	3 at Northwestern (2/24/22)

TEAM REBOUNDS

Had 20+ Rebound Margin:	22 (56-34) vs. Western Illinois (11/17/19)
Had 25+ Rebound Margin:	30 (55-25) vs. USC Upstate (11/17/16)
Outrebounded by 20+:	24 (50-26) vs. No. 8 Maryland (2/25/21)
Outrebounded by 25+:	28 (28-56) at Notre Dame (12/29/13)

TEAM ASSISTS

Had 25:	26 vs. North Alabama (12/21/21)
Had 30:	31 vs. Incarnate Word (12/10/15)
Had Five or Fewer:	5 at Indiana (3/6/21)

TEAM TURNOVERS

Committed 10 or Fewer:	10 at Rutgers (2/20/22)
Committed 20+:	22 at Northwestern (2/24/22)
Forced 10 or Fewer:	8 at Ohio State (2/18/21)
Forced 20+:	21 at Western Kentucky (11/10/21)

TEAM CLOSE GAMES

Game Decided by One Point:	W, 53-52 vs. Georgia Tech (12/1/21)
Game Decided by Two Points or Less:	L, 54-52, at Wisconsin (2/13/22)
Game Decided by Three Points or Less:	L, 54-52, at Wisconsin (2/13/22)
Back-to-Back Games Decided by Three Points or Less:	L, 63-65 (OT) at Rutgers (1/16/19); W 56-53 vs. Indiana (1/20/19)
Made a Last Second Shot to Win:	Jeanae Terry, 2, vs. Georgia Tech (12/1/21)
	Jeanae Terry, 2, vs. Rutgers (1/3/22)
Lost on a Last Second Shot:	Tory Ozment, 3pt, at Michigan State (2/21/21)

TEAM OVERTIME

Played an Overtime Game:	L, 73-68 vs. Indiana (1/16/22)
Played a Double Overtime Game:	L, 73-82 vs. South Carolina (12/16/18)
Played a Triple Overtime Game:	W, 82-75 vs. Nebraska (2/2/12)
Played Consecutive Overtime Games:	W, 90-88 at Minnesota (1/22/15); L, 71-79 vs. Ohio State (1/25/15)

TEAM COMEBACKS

Came Back from 10+ Down to Win:	W, 66-61 vs. Florida State (11/27/21)
	(Down 37-26, 8:20, 3rd Quarter)
Came Back from 15+ Down to Win:	W, 81-79 (OT) at Michigan
	(2/1/18; down 72-56 w/ 6:48 left in the 4th)

TEAM RANKED OPPONENTS

Beat a Ranked Team:	#17 Florida State, 66-61 (11/27/21)
Beat Back-to-Back Ranked Team:	#21 Rutgers, 47-33 (1/10/17)
	#18 Iowa, 76-70 (1/13/18)
Beat a Ranked Team on the Road:	#10 Maryland, 75-65 (2/15/18)
Beat a Top-10 Ranked Team:	#10 Maryland, 75-65 (2/15/18)
Beat a Top-10 Ranked Team on the Road:	#10 Maryland, 75-65 (2/15/18)
Beat a Top-5 Ranked Team:	#4 Texas A&M, 60-51 (12/4/11)
Beat a Top-5 Ranked Team on the Road:	N/A

INDIVIDUAL SCORING

Scored 20 Points:	20, Abbey Ellis at Rutgers (2/20/22)
Scored 30 Points:	31, Kayana Traylor at Michigan State (2/21/21)
Scored 35 Points:	38, Brittany Rayburn at Minnesota (1/12/12)
Scored 40 Points:	41, Katie Gearlds at Wisconsin (2/18/07)
Scored 20 Points in Back-to-Back Games:	Kayana Traylor 28, at Penn State (12/20/20), 21, vs. Nebraska (12/23/20)
Scored 20 Points in Three Straight Games:	Dominique Oden 28 vs. Penn State (1/26/20) 22 at Michigan State (1/30/20), 24 vs. No. 18 Indiana (2/3/20)
Two Players w/ 20+:	22, Dominique Oden & 28, Karissa McLaughlin at Michigan State (1/30/20)
Three Players w/ 20+:	Whitney Bays (24), KK Houser (21), Liza Clemons (20) & Courtney Moses (20) vs. Central Michigan (12/28/13)
Four Players w/ 20+:	Whitney Bays (24), KK Houser (21), Liza Clemons (20) & Courtney Moses (20) vs. Central Michigan (12/28/13)
Five Players in Double Figures:	Karissa McLaughlin (23), Kayana Traylor (15), Ae'Rianna Harris (13), Dominique Oden (12), Jenelle Grant (11) vs. Illinois (1/17/20)
Double Figures in 10 Straight Games:	10, Madison Layden (11/27/21-2/17/22)
Double Figures in 20 Straight Games:	35, Shereka Wright (11/29/01 - 12/29/02)
Double Figures in 30 Straight Games:	35, Shereka Wright (11/29/01 - 12/29/02)

INDIVIDUAL DOUBLE-DOUBLES

Double-Double:	11 pts, 17 rebs, Jeanae Terry vs. Illinois (2/17/22)
Double-Double (Rebounds):	11 pts, 17 rebs, Jeanae Terry vs. Illinois (2/17/22)
Double-Double (Assists):	19 pts, 11 ast, Karissa McLaughlin at Wisconsin (12/31/18)
Double-Double (Steals):	27 pts, 12 stl, Joy Holmes vs. Minnesota (1/13/89)
Double-Double (Blocks):	12 pts, 11 blk, Danielle Campbell vs. Butler (11/17/07)
Double-Double (Freshman):	10 pts, 11 ast, Karissa McLaughlin vs. Penn State (1/28/18)
Triple-Double:	12 pts, 11 reb, 11 blk, Danielle Campbell vs. Butler (11/17/07)
20-10 Game:	21 pts, 12 rebs, Ae'Rianna Harris vs. Penn State (1/26/20)
30-10 Game:	30 pts, 10 reb, Stephanie White vs. Washington (3/14/98)
20-20 Game:	29 pts, 20 reb, Joy Holmes at Wisconsin (1/27/91)
Consecutive Double-Doubles:	4, Fatou Diagne, (1/18-1/31)
Double-Double in Three Straight Games:	4, Fatou Diagne, (1/18-1/31)
Double-Double in Five Straight Games:	9, Whitney Bays (12/20/14 - 1/19/15)
Two Players Recorded a Double-Double:	11 pts, 12 reb, Fatou Diagne 15 pts, 10 reb, Ae'Rianna Harris, vs. Michigan State (3/5/20)
Three Players Recorded a Double-Double:	Ae'Rianna Harris (14 pts, 17 rebs) & Tamara Farquhar (13 pts, 14 rebs), vs. Western Illinois (11/17/20)

INDIVIDUAL TRIPLE-DOUBLES

Triple-Double:	11 pts, 12 rebs, 10 asts - Jeanae Terry - vs. Miami (12/19/21)
Before that	12 pts, 11 rebs, 11 blks - Danielle Campbell - vs. Butler (11/17/07)
Before that	20 pts, 11 rebs, 10 asts - Stephanie White - vs. Indiana (1/22/99)

INDIVIDUAL FIELD GOALS

Made 13 Field Goals:	13, Dominique Oden, vs. Penn State (1/26/20)
Made 15 Field Goals:	15, Shereka Wright at Michigan (2/17/02)
Attempted 20 Field Goals:	20, Kayana Traylor at Michigan State (2/21/21)
Attempted 25 Field Goals:	25, KK Houser vs. Penn State (1/30/14)
Attempted 30 Field Goals:	33, MaChelle Joseph at Wisconsin (2/21/92)

INDIVIDUAL 3-POINTERS

Made Six 3-Pointers:	6, Abbey Ellis at Illinois (1/20/22)
Made Seven 3-Pointers:	7, Cassidy Hardin vs. Denver (12/12/21)
Made Eight 3-Pointers:	9, Karissa McLaughlin vs. Northwestern (2/17/19)
Attempted 12 3-Pointers:	12, Cassidy Hardin at Nebraska (1/30/22)
Attempted 13 3-Pointers:	14, Madison Layden vs. Ohio State (12/5/21)
Made a 3-Pointer in 20 Straight Games:	24, Madison Layden (12/9/20-11/17/21) 23, Cassidy Hardin (3/10/21-2/4/22)

INDIVIDUAL FREE THROWS

Made 13 FTs:	14, Courtney Moses at Northwestern (1/26/12)
Made 15 FTs:	15, Ukari Figgs vs. Washington (3/14/98)
Attempted 16 FTs:	18, Brittany Rayburn vs. Gardner-Webb (12/21/09)
Attempted 18 FTs:	18, Brittany Rayburn vs. Gardner-Webb (12/21/09)
Attempted 20 FTs:	20, Shereka Wright at Northwestern (2/15/04)

INDIVIDUAL REBOUNDS

Grabbed 15 Rebounds:	17, Jeanae Terry vs. Illinois (2/17/22)
Grabbed 16 Rebounds:	17, Jeanae Terry vs. Illinois (2/17/22)
Grabbed 17 Rebounds:	17, Jeanae Terry vs. Illinois (2/17/22)
Grabbed 18 Rebounds:	18, Fatou Diagne vs. Penn State (1/31/21)
Grabbed 19 Rebounds:	19, Whitney Bays vs. Ohio State (1/25/15)
Grabbed 20 Rebounds:	20, Joy Holmes at Wisconsin (1/27/91)
Grabbed Eight Off. Rebounds:	9, Jeanae Terry at Wisconsin (2/13/22)
Grabbed 12 Defensive Rebounds:	14, Ae'Rianna Harris vs. Western Illinois (11/17/19)
Grabbed 10+ Rebounds in Three Straight Games:	3, Ae'Rianna Harris (11/17/19-11/29/19)
Two Players Grabbed 10+ Rebounds in a Game:	Tamara Farquhar (14) & Ae'Rianna Harris (17) vs. Western Illinois (11/17/19)
Three Players Grabbed 10+ Rebounds in a Game:	Bridget Perry (11), Whitney Bays (11) & Liza Clemons (13) vs. Northwestern (2/11/15)

INDIVIDUAL ASSISTS

Dished Out 10 Assists:	12, Jeanae Terry at Northwestern (2/24/22)
Dished Out 11 Assists:	12, Jeanae Terry at Northwestern (2/24/22)
Dished Out 12 Assists:	12, Jeanae Terry at Northwestern (2/24/22)
Dished Out 5+ Assists in Five Straight Games:	6, Jeanae Terry (1/20/22 - 2/16/22)
Dished Out 10+ Assists in Two Straight Games:	KK Houser vs. Ohio State, 10 (1/14/13) & Minnesota, 10 (1/17/13)

INDIVIDUAL BLOCKED SHOTS

Posted Five Blocks:	7, Ae'Rianna Harris vs. Michigan State (3/5/20)
Posted Six Blocks:	7, Ae'Rianna Harris vs. Michigan State (3/5/20)
Posted Seven Blocks:	7, Ae'Rianna Harris vs. Michigan State (3/5/20)
Posted Eight Blocks:	9, Ae'Rianna Harris at No. 5 South Carolina (12/15/19)
Blocked 5+ Shots in Back-to-Back Games:	Ae'Rianna Harris vs. UT Martin, 5 (12/18/17), Saint Mary's, 5 (12/20/17) & at Rutgers, 7 (12/28/17)

INDIVIDUAL STEALS

Grabbed Five Steals:	6, Madison Layden, at Rutgers (2/20/22)
Grabbed Six Steals:	6, Madison Layden, at Rutgers (2/20/22)
Grabbed Seven Steals:	8, FahKara Malone vs. Indiana (3/7/08)
Grabbed Eight Steals:	8, FahKara Malone vs. Indiana (3/7/08)

INDIVIDUAL MINUTES

Played a Complete Game:	Kayana Traylor vs. Illinois (2/28/21)
Played at Least 40 Minutes:	Cassidy Hardin, Abbey Ellis, Madison Layden vs. Indiana (1/16/22)
Played Every Minute of an Overtime Game:	Karissa McLaughlin (45) & Dominique Oden (45) at Rutgers (1/16/19)
Freshman Played 40 Minutes:	Madison Layden (40) vs. Rutgers (2/14/21)
Freshman Played a Complete Game:	Madison Layden (40) vs. Rutgers (2/14/21)
Played Consecutive Complete Games:	Kayana Traylor, 2 vs. Michigan (2/11/21)

INDIVIDUAL FOULS

Technical Foul - Player:	Tamara Farquhar, vs. Northwestern (12/17/20)
Technical Foul - Coach:	vs. Gonzaga (12/1/19)
Fouled Out:	Ava Learn vs. Illinois (2/17/22)
Two Players Fouled Out:	Ra Shaya Kyle, Fatou Diagne vs. Michigan (2/11/21)
Three Players Fouled Out:	Tamara Farquhar, Ae'Rianna Harris & Dominique Oden vs. South Carolina (12/16/18 - 2 OT)

2021-22 PURDUE WOMEN'S BASKETBALL GAME NOTES

BIG TEN STANDINGS

SCHOOL	CONF.	PCT.	HOME	AWAY	STREAK	OVERALL	PCT.	HOME	AWAY	NEUTRAL	LAST 10	STREAK
Michigan	13-3	.812	9-0	4-3	W2	22-4	.846	14-0	5-4	3-0	8-2	W2
Ohio State	13-4	.765	7-2	6-2	W2	21-5	.808	14-2	7-3	0-0	8-2	W2
Maryland	13-4	.765	8-1	5-3	W1	21-7	.750	14-1	7-4	0-2	9-1	W1
Iowa	13-4	.765	5-3	8-1	W3	19-7	.731	10-4	9-3	0-0	7-3	W3
Indiana	11-5	.688	7-1	4-4	L3	19-7	.731	12-2	6-4	1-1	5-5	L3
Nebraska	10-7	.588	7-1	3-6	W2	21-7	.750	15-1	5-6	1-0	7-3	W2
Northwestern	8-7	.533	4-3	4-4	W2	16-10	.615	10-3	5-5	1-2	5-5	W2
Michigan State	8-8	.500	5-3	3-5	L2	14-13	.519	10-4	4-7	0-2	5-5	L2
Purdue	7-10	.412	4-4	3-6	L1	16-12	.571	10-5	5-6	1-1	4-6	L1
Minnesota	6-11	.353	4-5	2-6	W1	13-16	.448	9-7	3-7	1-2	4-6	W1
Penn State	5-12	.294	3-5	2-7	L1	11-16	.407	7-5	3-9	1-2	2-8	L1
Wisconsin	4-13	.235	3-6	1-7	L3	7-20	.259	5-10	1-10	1-0	3-7	L3
Rutgers	2-14	.125	1-7	1-7	L2	9-19	.321	8-8	1-8	0-3	2-8	L2
Illinois	1-12	.077	1-5	0-7	L10	6-18	.250	6-8	0-8	0-2	0-10	L10

NATIONAL POLLS

ASSOCIATED PRESS

No.	Team	Record	Points	LW
1	South Carolina (30)	25-1	750	1
2	Stanford	23-3	720	2
3	NC State	25-3	688	4
4	Louisville	23-3	651	3
5	Baylor	21-5	619	7
6	Michigan	21-4	596	9
7	UConn	19-5	517	10
8	LSU	23-4	510	11
9	Iowa State	22-4	508	6
10	Indiana	19-5	485	5
11	Texas	19-6	469	14
12	Arizona	19-5	429	8
13	Maryland	20-7	425	13
14	Notre Dame	20-6	288	19
15	Florida	20-7	287	17
16	Tennessee	21-6	273	12
17	Ohio State	20-5	238	18
18	North Carolina	21-5	228	24
19	BYU	23-2	226	20
20	Oklahoma	20-6	212	15
21	Iowa	17-7	176	22
22	Georgia Tech	19-8	117	16
23	Virginia Tech	20-7	106	23
24	Florida Gulf Coast	24-2	62	25
25	Georgia	18-8	44	21

Oregon 44, Kansas 39, Princeton 16, UCF 8, Washington State 6, Villanova 5, Liberty 3, UNLV 2, Toledo 2, Dayton 1

USA TODAY / WBCA COACHES POLL

No.	Team	Points	LW	1st Pl
1	South Carolina (25-1)	799	1	31
2	Stanford (23-3)	767	2	1
3	North Carolina State (25-3)	735	4	0
4	Louisville (24-3)	697	3	0
5	Michigan (21-4)	640	9	0
6	Iowa State (22-4)	612	5	0
7	Baylor (21-5)	604	10	0
8	LSU (23-4)	541	12	0
9	Connecticut (19-5)	541	11	0
10	Indiana (19-6)	513	6	0
11	Arizona (19-5)	481	7	0
12	Texas (19-6)	424	14	0
13	Maryland (20-7)	416	13	0
14	Tennessee (21-6)	385	8	0
15	Brigham Young (23-2)	351	16	0
16	Notre Dame (20-6)	281	20	0
17	Ohio State (20-5)	241	19	0
18	North Carolina (21-5)	217	23	0
19	Oklahoma (20-6)	204	15	0
20	Georgia (18-8)	170	17	0
21	Florida (20-7)	159	21	0
22	Iowa (18-7)	156	25	0
23	Florida Gulf Coast (24-2)	150	22	0
24	Georgia Tech (19-8)	110	18	0
25	Central Florida (20-3)	58	NR	0

Virginia Tech 53; Liberty 22; Mississippi 14; Drexel 14; Oregon 12; Rhode Island 7; Washington St. 6; Stony Brook 6; Utah 4; South Dakota State 4; South Florida 2; South Dakota 2; Nebraska 1; Gonzaga 1.

Week	AP	Coaches	NET
Preseason	-	-	-
Week 1	-	-	-
Week 2	-	-	-
Week 3	-	-	-
Week 4	RV	-	-
Week 5	-	-	121/116
Week 6	-	-	109
Week 7	-	-	91
Week 8	-	-	90
Week 9	-	-	90
Week 10	-	-	78/80
Week 11	-	-	80/70
Week 12	-	-	69
Week 13	-	-	66
Week 14	-	-	70
Week 15	-	-	72
Week 16	-	-	78
FINAL			

NATIONAL RANKINGS (FEB. 25)

	National	BIG	Stat
Assist-to-Turnover	70	8	1.03
Assists	22	5	442
Assists per Game	30	6	15.8
Blocked Shots	54	3	113
Blocked Shots per Game	71	3	4
Fewest Fouls	314	14	498
Fewest Turnovers	227	12	429
Field-Goal %	81	9	42.3
Field-Goal % Defense	257	9	41.5
FT Attempts	213	12	393
FT Made	168	10	295
FT %	56	4	75.1
Fouls Per Game	263	14	178
Rebound Margin	205	9	-0.7
Rebounds	110	7	1,000
Rebounds Per Game	230	12	35.71
Scoring Defense	257	10	67.2
Scoring Margin	169	9	2
Scoring Offense	86	10	69.2
Steals	178	8	199
Steals Per Game	234	8	71
3-Pointers FG Defense	50	2	27.8
3-Pointers Attempted	34	2	659
3-Pointers Made	36	4	211
3-Pointers Per Game	49	4	75
3-Point % Percentage	113	9	32
Turnover Margin	205	9	-0.25
Turnovers Forced	234	11	15.07
Turnovers Per Game	146	9	15.3
Winning Percentage	143	8	571

TOP 100 RANKINGS

	National	BIG	Stat
Cassidy Hardin			
3-pointers Attempted	9	3	207
3-Pointers Made	23	T-3	69
3-Pointers Per Game	47	6	2.46

Madison Layden

3-Pointers Attempted	44	5	179
3-Pointers Made	65	10	59
Minutes Played	67	7	915:31

Jeanae Terry

Triple Doubles	3	2	2
Assists	9	3	163
Assists Per Game	12	3	5.8
Assist/Turnover Ratio	75	9	1.85

MACKEY ARENA

Broke Ground: July 1965

First Game: Dec. 2, 1967

First Women's Game: Dec. 2, 1975 | Purdue 78, Illinois 74

Gearlds Overall: 10-5 | Non-Con: 6-1 | BIG: 3-4

Purdue Overall: 479-171 | Non-Con: 239-71 | BIG: 240-100

Home Wins vs. Ranked Teams: 53

MACKEY ARENA ATTENDANCE BY YEAR

Season	Games	Record	BIG Record	Total	Avg.	NCAA Rank
1975-76	7	4-3	—	—	—	—
1976-77	14	6-8	—	—	—	—
1977-78	10	8-2	—	—	—	—
1978-79	8	3-5	—	—	—	—
1979-80	11	4-7	—	—	—	—
1980-81	12	7-5	—	—	—	—
1981-82	14	8-6	—	—	—	—
1982-83	13	7-6	3-6	—	—	—
1983-84	13	2-11	0-9	—	—	—
1984-85	11	7-4	5-4	—	—	—
1985-86	12	8-4	5-4	—	—	—
1986-87	13	11-2	7-2	—	—	—
1987-88	14	11-3	6-3	7048	503	—
1988-89	16	13-3	8-1	42,135	2,633	9th
1989-90	16	13-3	6-3	56,411	3,526	7th
1990-91	15	13-2	8-1	48,006	3,200	8th
1991-92	16	15-1	9-0	57,663	3,604	11th
1992-93	14	10-4	5-4	45,067	3,219	16th
1993-94	14	14-0	9-0	62,818	4,487	14th
1994-95	12	10-2	7-1	55,971	4,664	14th
1995-96	11	9-2	7-1	71,588	6,508	8th
1996-97	10	9-1	7-1	73,286	7,329	6th
1997-98	13	11-2	6-2	99,338	7,641	6th
1998-99	13	13-0	8-0	125,857	9,681	3rd
1999-00	14	12-2	7-1	131,992	9,428	5th
2000-01	16	15-1	8-0	116,568	7,286	7th
2001-02	15	14-1	8-0	125,659	8,377	6th
2002-03	16	16-0	8-0	112,863	7,054	9th
2003-04	12	11-1	7-1	121,258	10,105	5th
2004-05	13	9-4	5-3	110,296	8,484	7th
2005-06	14	13-1	7-1	101,700	7,264	9th
2006-07	14	12-2	6-2	106,184	7,585	8th
2007-08	16	12-4	8-1	141,969	8,873	5th
2008-09	15	12-3	7-2	134,559	8,971	5th
2009-10	18	12-6	8-1	146,868	8,159	5th
2010-11	17	14-3	6-2	129,671	7,628	8th
2011-12	17	13-4	6-2	135,285	7,958	7th
2012-13	13	10-3	5-3	110,689	8,515	7th
2013-14	15	12-3	6-2	110,825	7,388	6th
2014-15	16	6-10	1-8	100,458	6,297	9th
2015-16	16	12-4	6-3	100,047	6,253	10th
2016-17	15	10-5	5-3	89,099	5,940	9th
2017-18	16	11-5	5-3	96,628	6,039	8th
2018-19	17	13-4	6-3	110,747	6,515	10th
2019-20	15	9-6	3-6	94,736	6,316	11th
2020-21#	14	6-8	3-7	2176	155	-
2021-22~	15	10-5	4-4	42,983	2,866	-
Totals	651	480-171	241-100	3,064,541^	6,328^^	-

* no attendance figures prior to 1987-88

^ Entering 2021-22 | # Limited fans due to COVID-19 Pandemic restrictions

~ Starting with the 2021-22 season, Purdue began announcing actual attendance rather than distributed tickets

LARGEST HOME CROWDS

Attnd.	Opponent	Result	Date
1. 14,123	Ohio State	W 88-58	2/14/99
2. 14,123	Iowa	W 73-59	2/27/00
3. 14,091	Iowa	W 84-55	2/26/04
4. 13,737	Ohio State	W 57-54	2/8/04
5. 13,498	Iowa	L 67-70 OT	2/11/90

LARGEST ROAD CROWDS

Attnd.	Opponent	Result	Date
1. 16,236	at Wisconsin	L 69-80	2/15/98
2. 16,050	at Illinois	W 80-75	2/23/97
3. 15,407	at Penn State	L 60-69	2/29/04
4. 13,424	at Michigan State	L 52-67 OT	2/19/12
5. 13,222	at Minnesota	L 49-71	2/13/05

LARGEST NEUTRAL-SITE CROWDS

Attnd.	Opponent	Location	Result	Date
1. 32,055-	Indiana	Indianapolis ¹	W 53-51	12/14/02
2. 20,551 ¹	SW Missouri St.	St. Louis, Mo.	W 81-64	3/30/01
20,551	Notre Dame	St. Louis, Mo.	L 66-68	4/1/01
4. 17,752	Kentucky	Indianapolis ²	W 48-40	12/18/99
5. 17,733 ³	Louisiana Tech	San Jose, Calif.	W 77-63	3/26/99
17,733	Duke	San Jose, Calif.	W 62-45	3/28/99

- counted as part of double-header with Purdue men's basketball game

counted as part of double-header

¹ RCA Dome

² Conseco Fieldhouse

³ Market Square Arena

2021-22 PURDUE WOMEN'S BASKETBALL GAME NOTES

BROOKE MOORE

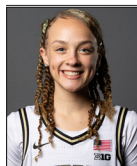


5-7 | GUARD
SENIOR
ATLANTA, GA.
HENRY COUNTY
AUBURN
PSYCHOLOGY
@moore_5
@brookiemoe

	Season High	Career High	(*prior school)
Points	22, 2x last at Michigan State, 1/9/22	25, vs Bowling Green, 12/13/20	
Rebounds	6 vs. Indiana, 1/16/22	6 vs. Indiana, 1/16/22	
Assists	3, 2x last vs. Illinois, 2/17/22	9, vs Bowling Green, 12/13/20	
Steals	4 at Illinois, 1/20/22	5, vs. Maryland - 2/25/2	
Blocks	2, vs. West Virginia, 11/25/21	2, vs. West Virginia, 11/25/21	
Field Goals	8, 2x last at Michigan State, 1/9/22	8, 5x last, at Michigan State, 1/9/22	
3-Pointers	6, at Maryland, 12/8/21	6, at Maryland, 12/8/21	
Free Throws	6 vs. Indiana, 1/16/22	9, vs Bowling Green, 12/13/20	
Minutes	35 vs. Indiana, 1/16/22	39, vs. Dayton, 11/30/19*	

SEASON	GP-GS	MIN/AVG	FG-FGA	FG%	3FG-FGA	3FG%	FT-FTA	FT%	OFF	DEF	TOT	AVG	PF-FO	AST	TO	BLK	STL	PTS	AVG
2018-19*	25-0	299/12.0	45-147	.306	31-105	.295	10-10	1.000	7	19	26	1.0	15-0	10	19	1	11	131	5.2
2019-20*	21-17	492/23.4	62-197	.315	25-100	.250	32-42	.762	15	15	30	1.4	23-0	18	44	1	20	181	8.6
2020-21	22-18	566/25.7	101-258	.391	36-112	.321	29-39	.744	9	34	43	2.0	28-0	39	39	1	25	267	12.1
2021-22	28-0	532/19.0	99-243	.407	33-91	.363	46-55	.836	16	36	52	1.9	50-0	27	52	6	24	277	9.9
PURDUE	50-18	1098/22.0	200-501	.399	69-203	.340	75-94	.798	25	70	95	1.9	78-0	66	91	7	49	544	10.9
TOTAL	96-35	1888/19.7	307-845	.363	125-408	.306	117-146	.801	47	104	151	1.6	116-0	94	154	9	80	856	8.9

SKYE WILLIAMS



5-10 | GUARD
FRESHMAN
PICKERINGTON, OHIO
PICKERINGTON CENTRAL
POLITICAL SCIENCE
@moore_5
@brookiemoe

	Season High	Career High	(*prior school)
Points	-	-	
Rebounds	-	-	
Assists	-	-	
Steals	-	-	
Blocks	-	-	
Field Goals	-	-	
3-Pointers	-	-	
Free Throws	-	-	
Minutes	-	-	

SEASON	GP-GS	MIN/AVG	FG-FGA	FG%	3FG-FGA	3FG%	FT-FTA	FT%	OFF	DEF	TOT	AVG	PF-FO	AST	TO	BLK	STL	PTS	AVG
2021-22																			
TOTAL																			

QUICK HITS

- Ranks first among Power 6 conferences in scoring (9.9) by players without a start, seventh in all of Division I
- Only Big Ten player with two 20-point outings off the bench.
- Dropped 22 points against Maryland and Michigan State
- Role switched from starter to first sub group
- Top returner from 2020-21 with 12.1 points per game
- Finished second on the team in 2020-21 with 36 3-pts
- Actively pursued NIL opportunities after the NCAA legislation change in July
- Played two seasons at Auburn from 2018-20, averaging 8.6 points, 1.4 rebounds and one steal per game
- Tabbed the No. 11 guard in the Class of 2018 (ESPNW)
- Georgia Class 4A Player of the Year in 2018

QUICK HITS

- 4-star recruit, No. 93 in the nation, No. 38 guard (ESPNW)
- Ohio All-State Special Mention in 2020
- Played two seasons of high school at Pickerington Central
- Featured on SCTop 10 for filthy crossover in 2019-20
- Avid listener of K-pop

ROKIA DOUMBIA



5-9 | GUARD
SENIOR
BAMAKO, MALI
IMG ACADEMY
ARKANSAS
INTL. BUSINESS
@skysthalimit21
@Skyesthalimit21

	Season High	Career High	(*prior school)
Points	10, at Maryland, 12/8/21	13, vs. Vanderbilt - 1/19/20*	
Rebounds	7 2x last vs. North Alabama, 12/21/21	12, vs. Tulsa - 12/11/19*	
Assists	4 vs. North Alabama, 12/21/21	6, at Ole Miss - 2/16/20*	
Steals	1, at Maryland, 12/8/21	3, 2x last, vs. Michigan - 2/11/21	
Blocks	-	2, vs. UT Martin - 12/29/19*	
Field Goals	4, at Maryland, 12/8/21	5 2x last, at Ohio State, 2/18/21	
3-Pointers	2, at Maryland, 12/8/21	3, at Vanderbilt - 1/19/20*	
Free Throws	-	4, 2x last, vs. Michigan - 2/11/21	
Minutes	23, at Maryland, 12/8/21	29, 2x last, vs. Michigan - 2/11/21	

SEASON	GP-GS	MIN/AVG	FG-FGA	FG%	3FG-FGA	3FG%	FT-FTA	FT%	OFF	DEF	TOT	AVG	PF-FO	AST	TO	BLK	STL	PTS	AVG
2018-19*	23-0	133/5.8	9-32	.281	2-13	.154	4-7	.571	9	15	24	1.0	22-1	10	20	2	4	24	1.0
2019-20*	29-0	462/15.9	38-87	.437	7-24	.292	13-26	.500	34	88	122	4.2	53-0	31	22	8	23	96	3.3
2020-21	15-0	220/14.7	22-47	.468	1-7	.143	10-16	.625	19	30	49	3.3	19-0	23	31	2	9	55	3.7
2021-22	9-0	105/11.7	13-23	.565	3-7	.429	2-2	1.000	14	19	33	3.7	11-0	10	8	0	3	31	3.4
PURDUE	24-0	325/13.6	35-70	.500	4-14	.286	12-18	.667	33	49	82	3.4	30-0	33	39	2	12	86	3.6
TOTAL	79-0	982/12.4	84-195	.431	14-54	.259	29-51	.569	82	159	241	3.1	111-1	81	87	14	41	211	2.7

QUICK HITS

- Took Mali runner-up finish at 2021 AfroBasket Women, missed most of September competing in the tournament
- Made season debut against Ohio State, after ankle injury say her miss the first eight contests
- Changed numbers from 4 to 2 during the offseason
- Came off the bench in 15 games to shoot 46.8% from the field with 3.7 points and 3.3 rebounds per game last year
- Played two seasons at Arkansas from 2018-20
- Only player on the roster with postseason experience, reaching the WNIT 3rd Round in 2019

JAYLA SMITH



6-0 | GUARD
FRESHMAN
INDIANAPOLIS, IND.
LAWRENCE NORTH
BUSINESS
@s.jaylasmith
@_JaylaSmith

	Season High	Career High	(*prior school)
Points	16, at Nebraska, 1/30/22	16, at Nebraska, 1/30/22	
Rebounds	7, 2x last at Indiana 2/6/22	7, 2x last at Indiana 2/6/22	
Assists	2, 7x last vs. Illinois, 2/17/22	2, 7x last vs. Illinois, 2/17/22	
Steals	4 at Western Kentucky, 11/10/21	4 at Western Kentucky, 11/10/21	
Blocks	3, at Indiana 2/6/22	3, at Indiana 2/6/22	
Field Goals	6, at Nebraska, 1/30/22	6, at Nebraska, 1/30/22	
3-Pointers	4, at Nebraska, 1/30/22	4, at Nebraska, 1/30/22	
Free Throws	3, 2x last vs. Penn State, 2/9/22	3, 2x last vs. Penn State, 2/9/22	
Minutes	27 at Western Kentucky, 11/10/21	27 at Western Kentucky, 11/10/21	

SEASON	GP-GS	MIN/AVG	FG-FGA	FG%	3FG-FGA	3FG%	FT-FTA	FT%	OFF	DEF	TOT	AVG	PF-FO	AST	TO	BLK	STL	PTS	AVG
2021-22	26-1	431:39/16.6	51-130	.392	16-53	.302	14-22	.636	13	37	50	1.9	23-0	20	26	10	22	132	5.1
TOTAL	26-1	431:39/16.6	51-130	.392	16-53	.302	14-22	.636	13	37	50	1.9	23-0	20	26	10	22	132	5.1

QUICK HITS

- Recorded a career-high 16 points at Nebraska, which included a perfect 4-of-4 from beyond the arc.
- Scored 11 points and had four steals in Purdue debut, just the second four-steal game in a rookie's first game since the 2009-10 season.
- 2021 Indiana Miss Basketball, 10th in program history
- Won the 2020 Indiana 3A State Championship, over Madison Layden's Northwestern, hitting 8 3-pointers
- No. 49 player in the nation and No. 1 in Indiana by MaxPreps
- 3-time First Team All-State selection
- Reached 1,000 points early during her senior year at LN

MIDE ORIYOMI



6-0 | GUARD/FORWARD
JUNIOR
HAMILTON, ONTARIO
KINGS CHRISTIAN
NORTHEASTERN
PSYCHOLOGY
@mide4
@mide_oriyomi

	Season High	Career High	(*prior school)
Points	9 at Western Kentucky, 11/10/21	22, vs. Delaware, 1/5/21*	
Rebounds	6 at Western Kentucky, 11/10/21	17, at James Madison, 1/25/21*	
Assists	2 2x last, vs. Western Michigan, 11/14/21	4, 3x last at Hofstra, 3/2/21*	
Steals	1 2x last, vs. West Virginia, 11/25/21	4, at Delaware, 1/12/20*	
Blocks	1 at Western Kentucky, 11/10/21	2, 2x last vs. James Madison, 2/21/20*	
Field Goals	2 2x last at Illinois State, 11/17/21	8, at Delaware, 2/7/21*	
3-Pointers	1, 2x last, vs. West Virginia, 11/25/21	2, 4x last Hofstra, 2/28/21*	
Free Throws	5 at Western Kentucky, 11/10/21	8, at Manhattan, 1/19/21*	
Minutes	27 at Western Kentucky, 11/10/21	39, vs. Drexel, 1/31/21*	

SEASON	GP-GS	MIN/AVG	FG-FGA	FG%	3FG-FGA	3FG%	FT-FTA	FT%	OFF	DEF	TOT	AVG	PF-FO	AST	TO	BLK	STL	PTS	AVG
2019-20*	25-2	15.9	50-117	.427	7-35	.200	23-44	.523	16	36	52	2.1	47-0	13	0.5	5	21	130	5.2
2020-21*	20-20	30.9	82-212	.387	21-63	.333	46-59	.780	46	107	153	7.7	54-1	15	0.8	1	21	231	11.6
2021-22	16-0	144/9.0	12-34	.353	2-11	.182	11-17	.647	10	17	27	1.7	16-0	6	16	1	2	37	2.3
TOTAL	61-22	1159/19.0	144-363	.397	30-109	.275	80-120	.667	72	160	232	3.8	117-1	34	99	8	44	398	6.5

QUICK HITS

- Played two seasons at Northeastern
- Named 3rd Team All-Colonial as a sophomore, averaging 11.6 points and 7.7 rebounds per game
- Earned three letters at Kings Christian in Ontario, playing alongside South Carolina's Laetitia Amihere

CASSIDY HARDIN

5



5-10 | GUARD
SENIOR
BARGERSVILLE, IND.
CENTER GROVE
BIOCHEMISTRY
@cass_hardin
@casshardin5

	Season High	Career High
Points	25 vs. Denver, 12/12/21	25 vs. Denver, 12/12/21
Rebounds	8 vs. Minnesota, 1/27/22	8 vs. Minnesota, 1/27/22
Assists	5 2x last vs. North Alabama, 12/21/21	5, 3x last vs. North Alabama, 12/21/21
Steals	3 vs. Denver, 12/12/21	3 2x last vs. Denver, 12/12/21
Blocks	1 6x last at Indiana, 2/6/22	1, 10x last at Indiana, 2/6/22
Field Goals	7 vs. Denver, 12/12/21	7 vs. Denver, 12/12/21
3-Pointers	7 vs. Denver, 12/12/21	7 vs. Denver, 12/12/21
Free Throws	4 vs. Denver, 12/12/21	4 vs. Denver, 12/12/21
Minutes	43 vs. Indiana, 1/16/22	43 vs. Indiana, 1/16/22

SEASON	GP-GS	MIN/AVG	FG-FGA	FG%	3FG-FGA	3FG%	FT-FTA	FT%	OFF	DEF	TOT	AVG	PF-FO	AST	TO	BLK	STL	PTS	AVG
2018-19	32-3	421/13.2	25-109	.229	24-97	.247	8-10	.800	7	26	33	1.0	25-0	35	20	2	5	82	2.6
2019-20	29-8	494/17.0	43-121	.355	37-105	.352	2-2	1.000	5	45	50	1.7	27-0	29	28	2	15	125	4.3
2020-21	19-0	231/12.2	18-62	.290	15-54	.278	3-4	.750	6	17	23	1.2	21-0	8	14	0	4	54	2.8
2021-22	28-28	871/30.3/11	79-225	.351	69-207	.333	17-22	.773	5	66	71	2.5	59-1	41	30	6	23	244	8.7
TOTAL	108-39	2018/18.7	165-517	.319	145-463	.313	30-38	.789	23	154	177	1.6	132-1	113	92	10	47	505	4.7

QUICK HITS

- Made 7 3-pointers for career-high 25 points against Denver, earning Big Ten Weekly Honor Roll
- Earned St. Pete Showcase All-Tournament honors with 15 points per game and 10 3-pointers
- Against Florida State, six 3-pointers tied for 11th in program history, 12 3-point shots good for eighth
- 145 of 165 career field goals made are 3-pointers
- Holds third longest 3-point streak in history at 23 games
- Named captain ahead of the season
- Has indoor court at home
- Plans to attend medical school to study anesthesiology, preferred school is Indiana
- McDonald's All-America nominee
- Indiana Doubles Tennis champion in 2017
- Two-time academic All-Big Ten

JEANAE TERRY

10



5-11 | GUARD
JUNIOR
DETROIT, MICH.
WAYNE MEMORIAL
ILLINOIS
SOCIOLOGY
@saucy
@basquetbol_nae

	Season High	Career High	(**prior school)
Points	14 2x last at Indiana, 2/6/22	28, at Wisconsin, 1/31/21*	
Rebounds	17, 2x last vs. Illinois, 2/17/22	17, 2x last vs. Illinois, 2/17/22	
Assists	12 2x last at Northwestern, 2/24/22	12 2x last at Northwestern, 2/24/22	
Steals	5, at Nebraska, 1/30/22	5, 4x last at Nebraska, 1/30/22	
Blocks	2, 2x last vs. Penn State, 2/9/22	4, vs. Chicago State, 11/5/19*	
Field Goals	7, at Indiana, 2/6/22	9, vs. Penn State, 1/28/21*	
3-Pointers	1 vs. Florida State, 11/27/21	3, 3x last vs. Ohio State, 1/7/21*	
Free Throws	4 2x last vs. Iowa, 1/13/22	11, at Wisconsin, 1/31/21*	
Minutes	38 at Michigan, 1/24/22	38 2x last at Michigan, 1/24/22	

SEASON	GP-GS	MIN/AVG	FG-FGA	FG%	3FG-FGA	3FG%	FT-FTA	FT%	OFF	DEF	TOT	AVG	PF-FO	AST	TO	BLK	STL	PTS	AVG
2019-20*	30-11	691/23.0	65-225	.289	15-57	.263	40-66	.606	34	79	113	3.8	55-1	91	50	17	35	185	6.2
2020-21*	23-23	696/30.3	89-226	.394	15-58	.259	54-74	.730	48	131	179	7.8	48-1	101	96	6	41	247	10.7
2021-22	28-28	820/29.3	75-183	.410	1-16	.063	43-65	.662	59	134	193	6.9	70-2	163	88	12	35	194	6.9
TOTAL	81-62	2203/27.2	229-634	.361	31-131	.237	137-205	.668	141	344	485	6.0	173-4	355	234	35	111	626	7.7

QUICK HITS

- Has two triple-doubles this season (vs. Minnesota and vs. Miami), the only Boilermaker with multiple triple-doubles in program history
- Posted 10 points, 11 rebounds and 12 assists vs. Minnesota, the second triple-double of the season and fourth in Purdue history
- Recorded third triple-double in program history with 11 points, 12 rebounds and 10 assists against Miami
- Hit game-winning shot at the buzzer against Georgia Tech
- Plays anywhere from the point to the four, also tasked with bringing the ball up at times
- Named a captain before first season at Purdue
- Played two seasons at Illinois
- Shot 34.1% from the field over first two years
- Two-time Class A All-State honoree

AJAH STALLINGS

13



5-9 | GUARD
SENIOR
INDIANAPOLIS, IND.
NORTH CENTRAL
PHARMACY
@_ajahstallings
@StallingsAjah

	Season High	Career High
Points	-	6, vs. Valparaiso - 12/6/20
Rebounds	1 vs. Denver, 12/12/21	3, vs. North Alabama - 11/29/20
Assists	-	3, vs. Purdue Fort Wayne - 11/18/18
Steals	-	2, vs. North Alabama - 11/29/20
Blocks	-	-
Field Goals	-	2, vs. Valparaiso - 12/6/20
3-Pointers	-	1, at Penn State, 12/20/20
Free Throws	-	2, 2x last vs. Valparaiso - 12/6/20
Minutes	3 vs. North Alabama, 12/21/21	31, vs. North Alabama - 11/29/20

SEASON	GP-GS	MIN/AVG	FG-FGA	FG%	3FG-FGA	3FG%	FT-FTA	FT%	OFF	DEF	TOT	AVG	PF-FO	AST	TO	BLK	STL	PTS	AVG
2018-19	14-0	54/3.9	2-3	.667	0-1	.000	3-4	.750	0	2	2	0.1	5-0	3	0	0	3	7	0.5
2019-20	4-0	71/1.9	0-2	.000	0-0	.000	0-0	.000	0	0	0	0.0	1-0	1	0	0	0	0	0.0
2020-21	15-2	112/7.4	3-15	.200	1-5	.200	2-4	.500	5	5	10	0.7	14-0	7	4	0	4	9	0.6
2021-22	2-0	6/2.8	0-1	.000	0-0	.000	0-0	.000	1	0	1	0.5	0-0	0	1	0	0	0	0.0
TOTAL	35-2	179/5.1	5-21	.238	1-6	.167	5-8	.625	6	7	13	0.4	20-0	11	5	0	7	16	0.5

QUICK HITS

- Made 2021-22 debut against Denver
- Won two starts during junior campaign
- In the second year of the pharmacy program
- Two-time Academic All-Big Ten honoree
- Suffered brachial plexus injury at birth that leaves her with limited use of her right hand
- Senior year had North Central ranked No. 2 in the nation
- Played in the 30th annual North/South Indiana All-Star Classic

AVA LEARN

14



6-1 | GUARD
FRESHMAN
HYDE PARK, N.Y.
OUR LADY OF LOURDES
ELEMENTARY EDUCATION
@ava.learn
@AvalLearn

	Season High	Career High
Points	13, at Rutgers, 2/20/22	13, at Rutgers, 2/20/22
Rebounds	6, at Northwestern, 2/24/22	3, at Northwestern, 2/24/22
Assists	1, 4x last vs. Northwestern, 2/4/22	1, 4x last vs. Northwestern, 2/4/22
Steals	1, 5x last at Wisconsin, 2/13/22	1, 5x last at Wisconsin, 2/13/22
Blocks	3, at Northwestern, 2/24/22	3, at Northwestern, 2/24/22
Field Goals	6, 2x last at Rutgers, 2/20/22	6, 2x last at Rutgers, 2/20/22
3-Pointers	-	-
Free Throws	3, vs. Minnesota, 1/27/22	3, vs. Minnesota, 1/27/22
Minutes	23, 2x last at Illinois, 1/20/22	23 2x last at Illinois, 1/20/22

SEASON	GP-GS	MIN/AVG	FG-FGA	FG%	3FG-FGA	3FG%	FT-FTA	FT%	OFF	DEF	TOT	AVG	PF-FO	AST	TO	BLK	STL	PTS	AVG
2021-22	18-0	235/13.1	39-62	.629	0-7	.000	11-16	.688	21	28	49	2.7	49-3	6	13	12	6	89	4.9
TOTAL	18-0	235/13.1	39-62	.629	0-7	.000	11-16	.688	21	28	49	2.7	49-3	6	13	12	6	89	4.9

QUICK HITS

- No. 41 guard in the nation by Dan Olson
- 4-year letterwinner at Our Lady of Lourdes
- Poughkeepsie Journal All-Star four times
- State favorites in 2020, before COVID-19 pandemic canceled any postseason tournament
- Went 66-26 during high school career

ABBEY ELLIS

23



5-6 | GUARD
JUNIOR
MELBOURNE, AUS.
OUR LADY OF MERCY
CAL POLY
CHILD DEVELOPMENT
@_abbeyellis
@_abbeyellis

	Season High	Career High	(**prior school)
Points	21 at Illinois, 1/20/22	39, at San Diego St., 12/21/20*	
Rebounds	8 vs. Indiana, 1/16/22	10, vs. Long Beach St., 3/10/21*	
Assists	11, vs. Western Michigan, 11/14/21	11, vs. Western Michigan, 11/14/21	
Steals	5, vs. Western Michigan, 11/14/21	8, vs. Santa Clara, 12/15/20*	
Blocks	1, 6x last at Wisconsin, 2/13/22	1, 12x last at Wisconsin, 2/13/22	
Field Goals	9 at Illinois State, 1/17/21	14, vs. UC Riverside, 1/23/20*	
3-Pointers	6 at Illinois, 1/20/22	8, at UC San Diego, 1/1/21*	
Free Throws	9 at Western Kentucky, 11/10/21	10, at UC San Diego, 1/2/21*	
Minutes	44 vs. Indiana, 1/16/22	44 vs. Indiana, 1/16/22	

SEASON	GP-GS	MIN/AVG	FG-FGA	FG%	3FG-FGA	3FG%	FT-FTA	FT%	OFF	DEF	TOT	AVG	PF-FO	AST	TO	BLK	STL	PTS	AVG
2019-20*	29-29	950/32.8	165-392	.421	48-148	.324	73-87	.839	10	124	134	4.6	75-2	84	94	3	42	451	15.6
2020-21*	24-23	753/31.4	127-322	.394	42-116	.362	71-80	.888	17	95	112	4.7	51-2	62	70	3	62	367	15.3
2021-22	28-28	797/28.5	110-239	.460	28-87	.322	68-78	.872	24	56	80	2.9	47-0	86	64	7	29	316	11.3
TOTAL	81-80	2500/30.9	402-953	.422	118-351	.336	212-245	.865	51	275	326	4.0	173-4	232	228	13	133	1134	14.0

QUICK HITS

- Electrified crowd of 8,505 against Indiana with 19 points to push her into the 1,000-point club for her career
- Only Boilermaker since 2009-10 to record 11 dimes and five steals in a single game
- Mom, Elizabeth, mails ribbons from Australia for her to wear
- Played two seasons at Cal Poly
- Named First Team All-Big West in 2020-21
- Closed time at Cal Poly with 818 points, good for 25th in the program record book
- Among just 17 players nationally to average 15 points with at least 60 steals and assists in 2020-21
- Extensive career in Australian Youth National system, as at the U-18 level, helping the team win the 2016 U-16 Australian Junior Championships crown

2021-22 PURDUE WOMEN'S BASKETBALL GAME NOTES

RA SHAYA
KYLE

24



6-6 | CENTER
SOPHOMORE
MARION, IND.
MARION
SPORTS MANAGEMENT
@rashaya_03
@ra_kyle23

	Season High										Career High									
Points	20, vs. Dayton, 11/20/21										20, vs. Dayton, 11/20/21									
Rebounds	10, 2x last vs. Florida State, 11/27/21										10, 2x last vs. Florida State, 11/27/21									
Assists	1, 2x last vs. Georgia Tech, 12/1/21										1, 5x last vs. Georgia Tech, 12/1/21									
Steals	1, vs. Western Michigan, 11/14/21										1, 7x last, vs. Western Michigan, 11/14/21									
Blocks	3 2x last, vs. Dayton, 11/20/21										3, 3x last, vs. Dayton, 11/20/21									
Field Goals	9, vs. Western Michigan, 11/14/21										9, vs. Western Michigan, 11/14/21									
3-Pointers	-										-									
Free Throws	5, vs. Marshall, 11/22/21										6, vs. North Alabama - 11/29/20									
Minutes	28, vs. Marshall, 11/22/21										28, vs. Marshall, 11/22/21									

SEASON	GP-GS	MIN/AVG	FG-FGA	FG%	3FG-FGA	3FG%	FT-FTA	FT%	OFF	DEF	TOT	AVG	PF-FO	AST	TO	BLK	STL	PTS	AVG
2020-21	23-0	260/11.3	47-82	.573	0-0	.000	27-54	.500	30	57	87	3.8	52-1	3	25	20	6	121	5.3
2021-22	9-9	174/19.3	39-71	.549	0-1	.000	21-28	.750	11	40	51	5.7	32-0	2	19	11	1	99	11.0
TOTAL	32-9	433/13.5	86-153	.562	0-1	.000	48-82	.585	41	97	138	4.3	84-1	5	44	31	7	220	6.9

QUICK HITS

- Set career-highs in points two of first four games
- Recorded first career double-double against West Virginia
- Number retired at Marion High School in fall of 2021
- Tied for the tallest player in program history
- Nearly recorded a double-double in Purdue debut against North Alabama in 2020-21
- Cousin Dejah (DAY-zuh) played for Gearlds at Marian, winning two national championships
- Closed high school career with 1,816 points, as one of the top-100 scorers in IHSAA history
- One-of-47 players in IHSAA history to score 50 points in a game, coming against Jan. 8, 2020, against Southwood
- Shot 52% during prep career

NYAGOA
GONY

30



6-2 | FORWARD
SENIOR
LINCOLN, NEB.
LINCOLN
EXPLORATORY STUDIES
@nyxgoa
@nyxgoa

	Season High										Career High									
Points	7 vs. North Alabama, 12/21/21										7 vs. North Alabama, 12/21/21									
Rebounds	3 vs. North Alabama, 12/21/21										9, at Ball State, 11/7/18									
Assists	-										1, 7x last, vs. Michigan, 2/11/21									
Steals	-										1, 3x last, vs. Michigan, 2/11/21									
Blocks	1, 3x last at Wisconsin, 2/13/22										2, 7x last, vs. Michigan, 2/11/21									
Field Goals	3 vs. North Alabama, 12/21/21										3 vs. North Alabama, 12/21/21									
3-Pointers	-										-									
Free Throws	1 vs. North Alabama, 12/21/21										4, vs. No. 21 Miami, 11/29/18									
Minutes	10 vs. North Alabama, 12/21/21										21, vs. Illinois, 3/6/19									

SEASON	GP-GS	MIN/AVG	FG-FGA	FG%	3FG-FGA	3FG%	FT-FTA	FT%	OFF	DEF	TOT	AVG	PF-FO	AST	TO	BLK	STL	PTS	AVG
2018-19	31-1	280/9.0	11-30	.367	0-1	.000	12-19	.632	22	30	52	1.7	32-0	5	17	18	5	34	1.1
2019-20	15-0	43/2.9	2-5	.400	0-0	.000	2-2	1.000	4	3	7	0.5	8-0	1	3	2	1	6	0.4
2020-21	12-0	46/3.8	2-3	.667	0-0	.000	0-4	.000	0	4	4	0.3	8-0	3	5	5	1	4	0.3
2021-22	10-0	34/3.4	4-12	.333	0-0	.000	1-2	.500	6	3	9	0.9	6-0	0	7	3	0	9	0.9
TOTAL	68-1	403/5.9	19-50	.380	0-1	.000	15-27	.556	32	40	72	1.1	54-0	9	32	28	7	53	0.8

QUICK HITS

- Set career high with seven points off the bench against North Alabama
- Represented South Sudan in 2021 AfroBasket Women qualifiers, the first time in history the nation fielded a team
- Started all five games, winning the first jump ball in history
- Named to the Big Ten Anti-Hate Anti-Racism Coalition
- All-State Honorable Mention in 2018

MADISON
LAYDEN

33



6-1 | GUARD
SOPHOMORE
KOKOMO, IND.
NORTHWESTERN
SELLING & SALES
@madison_layden
@madison_layden

	Season High										Career High									
Points	20, 2x last vs. Penn State, 2/9/22										20, 2x last vs. Penn State, 2/9/22									
Rebounds	8, 3x last vs. Indiana, 1/16/22										8 3x last vs. Indiana, 1/16/22									
Assists	6, 2x last vs. Northwestern, 2/4/22										7, vs. Michigan State - 1/3/21									
Steals	6, at Rutgers, 2/20/22										6, at Rutgers, 2/20/22									
Blocks	2 3x last vs. Indiana, 1/16/22										2 3x last vs. Indiana, 1/16/22									
Field Goals	8, 2x last vs. Penn State, 2/9/22										8, 2x last vs. Penn State, 2/9/22									
3-Pointers	5, at Illinois, 1/20/22										6, at Iowa - 1/18/21									
Free Throws	6, vs. Dayton, 11/20/21										6, vs. Dayton, 11/20/21									
Minutes	44 vs. Indiana, 1/16/22										44 vs. Indiana, 1/16/22									

SEASON	GP-GS	MIN/AVG	FG-FGA	FG%	3FG-FGA	3FG%	FT-FTA	FT%	OFF	DEF	TOT	AVG	PF-FO	AST	TO	BLK	STL	PTS	AVG
2020-21	23-21	729/31.7	70-163	.429	45-111	.405	15-20	.750	12	61	73	3.2	43-0	69	44	5	48	200	8.7
2021-22	27-27	916/33.9	111-318	.349	59-179	.330	36-43	.837	24	101	125	4.6	65-1	70	53	14	46	317	11.7
TOTAL	50-48	1644/32.9	181-481	.376	104-290	.359	51-63	.810	36	162	198	4.0	108-1	139	97	19	94	517	10.3

QUICK HITS

- Worn glasses for games since she was in grade school
- Named a captain, first sophomore since 2007-08
- Holds 2nd longest 3-pt. streak in school history at 24 gms
- Made a 3-pointer in 21 straight games as a freshman
- Invited to the USA Basketball U19 World Cup Trials
- Big Ten All-Freshman honoree
- Tied freshman record with 7 3pts in a game at Iowa
- 2020 MaxPreps All-American, Indiana Gatorade Player of the Year and runner-up
- First in IHSAA history to lead three Final Fours in scoring
- Two-time state champion with mom Kathie as head coach and dad Jeff as assistant coach
- Ranks 13th in IHSAA in career scoring and one of 46 2,000-point scorers in state history

RICKIE
WOLTMAN

35



6-4 | FORWARD
JUNIOR
ST. LOUIS, MO.
INCARNATE WORD
MANAGEMENT
@slickrick35
@slickrick_35

	Season High	Career High
Points	18 vs. Penn State, 2/9/22	18 vs. Penn State, 2/9/22
Rebounds	11, 2x last vs. Penn State, 2/9/22	11, 2x last vs. Penn State, 2/9/22
Assists	3 at Rutgers, 2/20/22	3 at Rutgers, 2/20/22
Steals	2 2x last at Indiana, 2/6/22	2 2x last at Indiana, 2/6/22
Blocks	4 at Illinois State, 11/17/21	4 at Illinois State, 11/17/21
Field Goals	7 vs. North Alabama, 12/21/21	vs. North Alabama, 12/21/21
3-Pointers	-	-
Free Throws	3, 2x last at Rutgers, 2/20/22	3, 2x last at Rutgers, 2/20/22
Minutes	33, vs. West Virginia, 11/25/21	33, vs. West Virginia, 11/25/21

2021-22 PURDUE WOMEN'S BASKETBALL GAME NOTES

0 | Brooke Moore

2021-22	Min.	FG	3FG	FT	O-D-T	PF	Pts	A	To	S	B	+/-
Findlay	21	3-10	1-6	0-0	1-2-3	1	7	2	4	1	1	-3
WKU	14	3-9	1-3	2-3	2-0-2	3	9	1	3	1	0	5
WMU	7	0-1	0-1	0-0	0-0-0	0	0	0	1	2	0	-10
Illinois State	18	2-4	1-2	2-2	0-1-1	4	7	2	0	2	0	5
Dayton	16	3-6	1-3	3-5	1-0-1	3	10	0	3	1	0	-6
Marshall	13	1-3	1-1	0-0	0-0-0	0	3	0	0	0	1	0
West Virginia	26	6-15	1-6	0-0	3-1-4	2	13	2	3	1	2	-2
Florida State	23	2-9	1-3	0-0	0-1-1	2	5	2	1	0	0	-6
Georgia Tech	19	1-8	0-3	3-4	1-2-3	1	5	0	0	0	0	-5
Ohio State	11	1-8	0-4	1-1	0-0-0	0	3	1	1	0	0	3
Maryland	21	8-14	6-10	0-2	0-2-2	2	22	1	5	0	1	-1
Denver	17	5-7	1-2	0-0	1-0-1	1	11	3	3	3	0	10
Miami	13	2-7	0-1	0-0	1-1-2	1	4	1	2	1	0	-2
North Ala.	17	7-8	3-4	0-0	1-1-2	1	17	2	2	1	0	18
Rutgers	11	1-6	1-3	2-2	0-0-0	0	5	0	3	0	0	-6
MSU	24	8-12	3-6	3-3	0-1-1	2	22	0	2	1	0	6
Iowa	24	4-10	2-2	4-4	0-0-0	4	14	0	5	0	0	-14
Indiana	35	6-18	0-4	6-6	0-6-6	3	18	0	3	1	0	1
Illinois	20	5-6	0-0	4-4	1-2-3	1	14	0	4	4	0	11
Michigan	27	5-12	1-3	5-6	0-3-3	4	16	1	1	1	0	-7
Minnesota	16	3-11	1-5	0-0	1-2-3	3	7	0	1	0	0	2
Nebraska	30	5-14	2-6	0-1	1-0-1	2	12	2	3	1	0	-15
Northwestern	12	2-6	2-3	0-0	0-0-0	1	6	1	1	1	1	-7
Indiana	24	4-12	3-5	2-2	0-3-3	2	13	0	2	2	1	4
Penn State	16	5-9	0-1	0-0	0-2-2	0	10	1	2	0	0	-12
Wisconsin	18	1-6	0-3	2-2	1-1-2	2	4	2	0	0	0	-4
Illinois	22	4-9	1-3	5-6	1-2-3	3	14	3	1	1	0	11
Rutgers	17	2-7	0-2	2-2	0-1-1	0	6	1	0	0	0	1
Northwestern	21	3-6	1-2	0-0	1-2-3	3	7	1	0	0	0	-17
Wisconsin												
Big Ten^												
Big Ten^												
Big Ten^												
Big Ten^												

*Big Ten Tournament

1 | Skye Williams

2021-22	Min.	FG	3FG	FT	O-D-T	PF	Pts	A	To	S	B	+/-
Findlay	DNP											
WKU	DNP											
WMU	DNP											
Illinois State	DNP											
Dayton	DNP											
Marshall	DNP											
West Virginia	DNP											
Florida State	DNP											
Georgia Tech	DNP											
Ohio State	DNP											
Maryland	DNP											
Denver	DNP											
Miami	DNP											
North Ala.	DNP											
Rutgers	DNP											
MSU	DNP											
Iowa	DNP											
Indiana	DNP											
Illinois	DNP											
Michigan	DNP											
Minnesota	DNP											
Nebraska	DNP											
Northwestern	DNP											
Indiana	DNP											
Penn State	DNP											
Wisconsin	DNP											
Illinois	DNP											
Rutgers	DNP											
Northwestern	DNP											
Wisconsin												
Big Ten^												
Big Ten^												
Big Ten^												
Big Ten^												

*Big Ten Tournament

2 | Rokia Doumbia

2021-22	Min.	FG	3FG	FT	O-D-T	PF	Pts	A	To	S	B	+/-
Findlay	DNP											
WKU	DNP											
WMU	DNP											
Illinois State	DNP											
Dayton	DNP											
Marshall	DNP											
West Virginia	DNP											
Florida State	DNP											
Georgia Tech	DNP											
Ohio State	10	1-2	1-2	0-0	1-1-2	1	3	0	0	0	0	1
Maryland	23	4-4	2-2	0-0	4-2-6	4	10	2	2	1	0	-6
Denver	18	1-1	0-0	0-0	0-7-7	3	2	2	2	0	0	6
Miami	19	4-6	0-1	2-2	4-2-6	2	10	2	1	2	0	-2
North Ala.	14	3-6	0-0	0-0	2-5-7	0	6	4	1	0	0	10
Rutgers	7	0-0	0-0	0-0	1-0-1	1	0	0	0	0	0	-8
MSU	DNP											
Iowa	10	0-4	0-2	0-0	1-2-3	0	0	0	1	0	0	-9
Indiana	DNP											
Illinois	DNP											
Michigan	DNP											
Minnesota	DNP											
Nebraska	DNP											
Northwestern	3	0-0	0-0	0-0	1-0-1	0	0	0	1	0	0	-10
Indiana	3	0-0	0-0	0-0	0-0-0	0	0	0	0	0	0	-4
Penn State	DNP											
Wisconsin	DNP											
Illinois	DNP											
Rutgers	DNP											
Northwestern	DNP											
Wisconsin												
Big Ten^												
Big Ten^												
Big Ten^												
Big Ten^												

*Big Ten Tournament

3 | Jayla Smith

2021-22	Min.	FG	3FG	FT	O-D-T	PF	Pts	A	To	S	B	+/-
Findlay	16	3-9	1-4	0-0	1-2-3	1	7	2	1	2	0	17
WKU	27	5-10	1-5	0-0	0-2-2	0	11	0	1	4	1	-6
WMU	20	1-7	0-1	0-0	1-1-2	0	2	2	0	0	0	-11
Illinois State	12	0-3	0-1	0-0	1-0-1	3	0	0	2	2	0	4
Dayton	12	0-1	0-0	1-2	0-0-0	0	1	0	0	1	0	-11
Marshall	24	2-7	0-2	3-4	4-3-7	1	7	1	1	1	0	6
West Virginia	19	2-6	2-5	0-0	1-2-3	1	6	2	3	0	0	1
Florida State	4	0-1	0-1	0-0	0-2-2	0	0	0	0	0	0	-11
Georgia Tech	10	1-2	0-1	2-2	0-1-1	2	4	1	1	0	0	-7
Ohio State	10	1-8	0-1	0-0	1-0-1	3	2	0	0	1	0	-9
Maryland*	20	2-6	1-4	0-0	0-1-1	0	5	0	1	0	0	-18
Denver	18	4-6	1-2	2-2	0-3-3	0	11	1	1	1	1	18
Miami	16	2-3	0-0	1-3	0-1-1	1	5	0	0	0	1	-4
North Ala.	16	0-3	0-1	0-2	1-3-4	1	0	1	1	1	0	14
Rutgers	15	1-3	0-2	0-0	0-1-1	0	2	1	1	0	0	-10
MSU	11	2-3	0-1	0-1	0-0-0	0	4	0	0	1	0	-13
Iowa	DNP											
Indiana	DNP											
Illinois	11	3-4	2-2	0-0	0-2-2	0	8	2	0	0	0	6
Michigan	6	0-2	0-1	0-0	1-0-1	1	0	0	1	0	0	-6
Minnesota	20	5-8	0-2	0-0	0-0-0	1	10	0	1	1	1	-5
Nebraska	21	6-8	4-4	0-0	0-2-2	0	16	2	2	0	0	-5
Northwestern	20	4-6	2-2	0-1	0-1-1	3	10	1	3	2	1	-16
Indiana	23	2-9	1-3	0-0	2-5-7	2	5	0	0	1	3	-4
Penn State	23	2-6	1-3	3-3	0-3-3	1	8	2	4	3	0	-2
Wisconsin	22	1-4	1-3	2-2	0-2-2	1	5	0	1	0	0	0
Illinois	14	2-3	0-1	0-0	0-0-0	1	4	2	0	0	0	2
Rutgers	24	2-5	0-2	0-0	1-2-3	0	4	2	0	3	1	12
Northwestern	18	1-6	0-2	0-0	0-0-0	1	2	0	2	0	1	-8
Wisconsin												
Big Ten^												
Big Ten^												
Big Ten^												
Big Ten^												

*Big Ten Tournament

4 | Mide Oriyomi

2021-22	Min.	FG	3FG	FT	O-D-T	PF	Pts	A	To	S	B	+/-
Findlay	17	3-6	1-2	0-0	2-1-3	5	7	0	1	3	1	6
WKU	27	2-5	0-0	5-5	3-3-6	3	9	2	2	1	1	0
WMU	17	1-3	0-1	0-0	1-4-5	2	2	2	1	0	0	-8
Illinois State	15	2-8	0-2	1-6	3-1-4	0	5	0	1	0	0	-1
Dayton	22	1-3	0-0	1-2	1-3-4	2	3	1	2	0	0	-12
Marshall	11	1-2	1-2	0-0	0-1-1	1	3	1	2	0	0	9
West Virginia	12	1-1	1-1	2-2	1-1-2	1	5	0	1	1	0	3
Florida State	4	0-0	0-0	0-0	0-0-0	1	0	0	1	0	0	5
Georgia Tech	5	0-1	0-1	0-0	0-0-0	0	0	0	2	0	0	-1
Ohio State	4	1-2	0-0	0-0	0-0-0	0	2	0	1	0	0	3
Maryland	DNP											
Denver	5	0-2	0-1	0-0	0-1-1	0	0	0	0	0	0	-2
Miami	-1	0-0	0-0	0-0	0-0-0	1	0	0	0	0	0	-3
North Ala.	10	2-5	0-2	0-0	1-2-3	0	4	0	0	0	0	3
Rutgers	3	0-0	0-0	2-2	0-0-0	0	2	0	1	0	0	0
MSU	3	0-0	0-0	0-0	0-1-1	2	0	0	2	0	0	-1
Iowa	3	0-1	0-1	0-0	0-0-0	1	0	0	0	0	0	-4
Indiana	DNP											
Illinois	DNP											
Michigan	DNP											
Minnesota	DNP											
Nebraska	4	1-1	0-0	0-0	0-0-0	2	2	0	0	0	0	-6
Northwestern	DNP											
Indiana	DNP											
Penn State	DNP											
Wisconsin	DNP											
Illinois	DNP											
Rutgers	DNP											
Northwestern	DNP											
Wisconsin												
Big Ten^												
Big Ten^												
Big Ten^												
Big Ten^												

2021-22 PURDUE WOMEN'S BASKETBALL GAME NOTES

10 | Jeanae Terry

2021-22	Min.	FG	3FG	FT	O-D-T	PF	Pts	A	To	S	B	+/-
Findlay*	26	4-8	0-0	2-2	6-4-10	0	10	3	2	2	1	29
WKU*	21	2-4	0-0	1-1	1-4-5	2	5	3	7	1	0	7
WMU*	26	2-4	0-0	2-2	1-2-3	4	6	3	4	0	1	10
Illinois State*	24	1-2	0-0	0-0	0-3-3	3	2	4	4	0	0	15
Dayton*	22	2-6	0-1	0-2	0-4-4	3	4	2	2	0	1	-8
Marshall*	26	3-11	0-2	3-4	3-3-6	0	9	4	1	0	0	3
West Virginia*	24	1-6	0-2	3-4	5-3-8	3	5	2	5	0	0	-9
Florida State*	29	3-5	1-2	1-1	0-1-1	5	8	10	1	0	0	11
Georgia Tech*	35	4-10	0-1	1-2	0-7-7	3	9	7	3	3	2	0
Ohio State*	30	3-6	0-0	2-4	4-9-13	4	8	2	4	1	1	-24
Maryland*	37	4-7	0-0	1-1	2-8-10	3	9	8	5	2	0	-18
Denver*	28	5-6	0-0	4-5	1-4-5	2	14	5	1	3	0	35
Miami*	35	1-6	0-0	9-12	4-8-12	2	11	10	4	2	0	11
North Ala.*	21	4-4	0-0	0-00	0-2-2	0	8	6	4	1	0	19
Rutgers*	29	4-4	0-0	3-3	0-3-3	3	11	6	2	2	0	8
MSU*	33	0-5	0-0	4-4	1-5-6	1	4	8	3	0	1	14
Iowa*	25	2-11	0-1	4-6	4-1-5	5	8	8	2	2	0	-1
Indiana*	18	0-5	0-2	0-0	1-2-3	2	0	1	2	0	1	-4
Illinois*	35	4-9	0-1	0-1	2-4-6	0	8	6	2	1	1	12
Michigan*	38	4-12	0-1	0-2	2-3-5	2	8	5	2	1	1	-13
Minnesota*	33	5-10	0-0	0-0	4-7-11	1	10	12	0	3	0	13
Nebraska*	36	2-5	0-1	2-4	2-6-8	2	6	7	2	5	0	-14
Northwestern*	33	3-7	0-0	0-0	3-5-8	4	6	5	4	1	0	-6
Indiana*	31	7-11	0-0	0-0	1-6-7	2	14	5	7	1	1	-10
Penn State*	23	1-2	0-0	0-0	2-2-4	2	2	4	4	1	2	-1
Wisconsin*	34	2-9	0-0	2-3	9-8-17	3	6	7	3	1	0	-4
Illinois*	35	5-10	0-1	1-4	6-11-17	2	11	7	2	2	0	18
Rutgers*	27	0-2	0-1	0-0	1-4-5	3	0	4	2	1	0	2
Northwestern	36	1-4	0-0	0-0	0-9-9	4	2	12	6	1	0	-16
Wisconsin												
Big Ten^												
Big Ten^												
Big Ten^												
Big Ten^												

*Big Ten Tournament

14 | Ava Learn

2021-22	Min.	FG	3FG	FT	O-D-T	PF	Pts	A	To	S	B	+/-
Findlay	4	1-1	0-0	0-0	0-1-1	0	2	1	0	0	0	2
WKU	-1	0-0	0-0	0-0	0-0-0	0	0	0	0	0	0	0
WMU	DNP											
Illinois State	DNP											
Marshall	4	0-0	0-0	0-0	0-0-0	1	0	0	0	0	0	4
West Virginia	DNP											
Florida State	1	0-0	0-0	0-0	0-0-0	0	0	0	0	0	0	-3
Georgia Tech	DNP											
Ohio State	DNP											
Maryland	DNP											
Denver	DNP											
Miami	DNP											
North Ala.	8	1-2	0-0	0-0	0-0-0	1	2	1	0	0	0	8
Rutgers	DNP											
MSU	4	0-1	0-1	0-0	2-0-2	0	0	1	0	0	1	-6
Iowa	11	2-5	0-2	0-1	2-3-5	4	4	0	2	1	1	-2
Indiana	23	3-4	0-1	1-2	1-4-5	5	7	0	0	0	1	5
Illinois	23	4-5	0-0	0-1	0-3-3	3	8	1	2	0	1	22
Michigan	18	1-2	0-1	2-3	2-1-3	3	4	0	0	1	1	-7
Minnesota	18	3-4	0-0	3-3	1-3-4	4	9	0	1	0	1	-1
Nebraska	13	3-5	0-1	1-2	1-1-2	5	7	0	1	0	0	-8
Northwestern	14	2-3	0-1	1-1	0-3-3	4	5	1	1	1	2	2
Indiana	17	2-4	0-0	2-2	0-2-2	4	6	0	1	1	1	-1
Penn State	13	1-1	0-0	0-0	2-2-4	2	2	1	2	0	0	1
Wisconsin	17	3-5	0-0	0-0	0-1-1	3	6	0	0	1	0	2
Illinois	16	6-9	0-0	0-0	3-1-4	5	12	0	0	0	0	5
Rutgers	21	6-9	0-0	1-1	2-3-5	3	13	0	0	0	0	12
Northwestern	16	2-3	0-0	0-0	5-1-6	3	4	1	3	1	3	-9
Wisconsin												
Big Ten^												
Big Ten^												
Big Ten^												
Big Ten^												
Big Ten^												

*Big Ten Tournament

24 | Ra Shaya Kyle

2021-22	Min.	FG	3FG	FT	O-D-T	PF	Pts	A	To	S	B	+/-
Findlay	12	4-6	0-0	1-1	1-2-3	5	9	0	2	0	1	12
WKU*	11	1-1	0-0	2-3	0-3-3	4	4	0	1	0	1	13
WMU*	26	9-13	0-0	1-1	1-7-8	3	19	0	1	1	1	11
Illinois State*	15	5-7	0-0	4-4	1-2-3	3	14	0	4	0	3	1
Dayton*	23	8-14	0-0	4-4	1-7-8	4	20	0	4	0	3	5
Marshall*	28	5-8	0-1	5-6	4-6-10	4	15	1	3	0	1	6
West Virginia*	5	0-2	0-0	0-0	0-0-0	3	0	0	2	0	0	-3
Florida State*	28	6-12	0-0	1-2	1-9-10	3	13	0	1	0	1	13
Georgia Tech*	19	2-6	0-0	4-8	1-5-6	4	8	1	1	0	1	10
Ohio State*	20	3-8	0-0	0-0	2-1-3	4	6	0	2	0	0	-7
Maryland	DNP											
Denver	DNP											
Miami	DNP											
North Ala.	DNP											
Rutgers	DNP											
MSU	DNP											
Iowa	DNP											
Indiana	DNP											
Illinois	DNP											
Michigan	DNP											
Minnesota	DNP											
Nebraska	DNP											
Northwestern	DNP											
Indiana	DNP											
Penn State	DNP											
Wisconsin	DNP											
Illinois	DNP											
Rutgers	DNP											
Northwestern	DNP											
Wisconsin												
Big Ten^												
Big Ten^												
Big Ten^												
Big Ten^												
Big Ten^												

*Big Ten Tournament

13 | Ajah Stallings

2021-22	Min.	FG	3FG	FT	O-D-T	PF	Pts	A	To	S	B	+/-
Findlay	3	0-0	0-0	0-0	0-0-0	0	0	2	0	0	0	0
WKU	DNP											
WMU	DNP											
Illinois State	DNP											
Dayton	DNP											
Marshall	DNP											
West Virginia	DNP											
Florida State	DNP											
Georgia Tech	DNP											
Ohio State	DNP											
Maryland	DNP											
Denver	3	0-0	0-0	0-0	1-0-1	0	0	0	1	0	0	-5
Miami	DNP											
North Ala.	3	0-1	0-0	0-0	0-0-0	0-0	0	0	0	0	0	0
Rutgers	DNP											
MSU	DNP											
Iowa	DNP											
Indiana	DNP											
Illinois	DNP											
Michigan	DNP											
Minnesota	DNP											
Nebraska	DNP											
Northwestern	DNP											
Indiana	DNP											
Penn State	DNP											
Wisconsin	DNP											
Illinois	DNP											
Rutgers	DNP											
Northwestern	DNP											
Wisconsin												
Big Ten^												
Big Ten^												
Big Ten^												
Big Ten^												
Big Ten^												

*Big Ten Tournament

23 | Abbey Ellis

2021-22	Min.	FG	3FG	FT	O-D-T	PF	Pts	A	To	S	B	+/-
Findlay*	25	2-6	1-3	2-2	0-1-1	0	7	5	3	0	0	22
WKU*	22	3-6	2-4	9-10	1-1-2	3	17	3	2	0	0	11
WMU*	28	3-9	1-3	0-1	0-0-0	2	7	11	2	5	0	21
Illinois State*	32	9-12	2-4	0-0	0-2-2	0	20	1	2	2	0	10
Dayton*	31	3-7	1-2	4-4	4-0-4	3	11	0	3	0	1	-10
Marshall*	27	3-5	2-4	6-6	1-1-2	2	14	3	2	0	0	-1
West Virginia*	14	0-1	0-0	0-0	1-2-3	0	0	3	1	2	0	-1
Florida State*	23	1-4	0-3	0-0	0-1-1	1	2	2	1	0	1	-1
Georgia Tech*	31	2-5	0-0	1-1	0-3-3	1	4	1	1	0	0	10
Ohio State*	30	5-11	1-5	0-0	1-2-3	0	11	3	2	2	0	-10
Maryland*	36	5-8	0-2	0-0	0-1-1	1	10	4	5	1	0	-1
Denver*	25	5-6	2-3	2-2	0-0-0	2	14	5	3	2	0	3
Miami*	28	5-11	1-3	4-4	2-2-4	1	15	3	2	0	1	0
North Ala.*	20	2-5	0-2	0-0	0-3-3	0	4	3	0	0	1	0
Rutgers*	34	4-7	0-1	3-4	0-4-4	3	1	3	4	3	0	0
MSU*	30	3-5	0-0	3-5	2-4-6	0	9	5	4	1	1	10
Iowa	36	6-11	2-4	4-4	1-2-3	2	18	3	1	2	0	-1
Indiana*	44	8-17	6-9	2-4	4-4-8	4	19	4	3	0	0	-1
Illinois*	30	7-13	1-2	1-2	1-2-3	1	21	5	4	3	0	3
Michigan*	19	3-5	2-3	0-0	0-2-2	2	8	2	2	0	0	-10
Minnesota*	18	2-6	0-3	3-3	1-2-3	3	7	2	0	0	1	-1
Nebraska*	28	1-10	0-5	3-4	0-3-3	2	5	3	1	1	0	-1
Northwestern*	31	5-10	1-3	4-4	0-1-1	4	15	2	3	0	0	0
Indiana*	32	4-9	0-2	3-3	1-3-4	4	11	1	3	0	0	0
Penn State*	34	5-11	0-3	2-2	2-1-3	2	12	7	2	1	0	10
Wisconsin*	21	4-7	1-2	2-2	0-1-1	11	11	1	3	1	1	0
Illinois*	29	1-11	0-3	5-5	0-3-1	1	7	3	3	0	0	10
Rutgers	33	6-14	3-8	5-6	2-3-5	1	20	2	4	2	0	0
Northwestern	34	5-13	0-3	2-2	0-2-3	1	12	1	5	0	1	-1
Wisconsin												
Big Ten^												
Big Ten^												
Big Ten^												
Big Ten^												

33 | Madison Layden

2021-22	Min.	FG	3FG	FT	O-D-T	PF	Pts	A	To	S	B	+/-
Findlay*	33	8-16	2-9	4-6	2-7-9	2	22	4	1	3	1	16
WKU*	31	5-10	3-7	0-0	1-7-8	4	13	5	5	3	0	25
WMU*	37	8-16	4-9	0-0	1-7-8	3	20	3	2	1	1	13
Illinois State*	38	5-10	4-7	4-4	4-3-7	1	18	5	2	1	1	11
Dayton*	37	2-11	0-3	6-8	2-1-3	3	10	6	0	1	0	-11
Marshall*	33	2-10	0-4	3-4	1-5-6	2	7	1	5	4	1	12
West Virginia*	37	2-11	2-6	1-2	0-4-4	3	7	2	3	1	0	-10
Florida State*	38	5-16	4-12	2-2	1-6-7	1	16	4	0	1	0	7
Georgia Tech*	36	4-10	1-4	4-4	0-0-0	3	13	1	4	2	0	3
Ohio State*	39	5-17	3-14	0-0	3-2-5	2	13	3	0	2	2	-13
Maryland	DNP											
Denver*	25	4-10	2-7	0-0	0-1-1	1	10	1	1	1	0	17
Miami*	34	5-15	2-8	2-2	1-3-4	2	14	5	1	3	1	9
North Ala.*	30	4-8	2-4	3-4	1-5-6	1	13	3	2	1	0	25
Rutgers*	31	4-10	3-9	0-0	0-4-4	4	11	2	1	1	2	12
MSU*	36	4-11	3-8	1-2	1-2-3	2	12	1	4	3	0	19
Iowa*	27	4-8	1-3	2-2	0-3-3	5	11	2	1	1	0	-6
Indiana*	44	5-15	1-5	4-4	1-7-8	1	15	1	0	2	2	-2
Illinois*	37	7-14	5-6	0-0	0-3-3	3	19	3	3	0	1	21
Michigan*	35	5-15	3-7	0-0	0-4-4	2	13	2	1	3	0	-10
Minnesota*	37	6-13	4-8	0-1	0-2-2	2	16	2	1	4	0	21
Nebraska*	14	1-6	1-2	0-0	1-1-2	1	3	0	1	0	0	-8
Northwestern*	37	4-13	2-8	0-0	0-1-1	4	10	6	2	1	0	-6
Indiana*	35	0-7	0-2	0-0	1-5-6	4	0	1	3	0	1	8
Penn State*	35	8-16	2-6	2-2	2-5-7	1	20	3	6	1	1	5
Wisconsin*	35	1-12	0-6	2-2	1-3-4	2	4	1	1	1	0	0
Illinois*	36	2-13	1-7	1-7	1-6-7	3	5	2	1	2	0	12
Rutgers	39	6-14	3-11	0-0	1-5-6	2	15	4	1	6	0	9
Northwestern	27	3-7	3-6	0-0	0-6-6	3	9	1	2	0	1	-12
Wisconsin												
Big Ten^												
Big Ten^												
Big Ten^												
Big Ten^												

^Big Ten Tournament

35 | Rickie Woltman

2021-22	Min.	FG	3FG	FT	O-D-T	PF	Pts	A	To	S	B	+/-
Findlay	10	0-0	0-0	0-0	1-1-2	4	0	0	0	0	0	9
WKU	18	1-3	0-0	2-4	3-4-7	22	4	0	2	2	1	-4
WMU	9	0-0	0-0	0-0	0-2-2	3	0	0	2	0	0	0
Illinois State	22	2-3	0-0	0-0	0-5-5	1	4	1	1	0	4	6
Dayton	7	0-1	0-0	0-2	0-0-0	0	0	0	0	0	0	-18
Marshall	5	1-1	0-0	0-0	1-0-1	1	2	0	1	0	0	1
West Virginia	33	4-6	0-0	1-2	1-4-5	3	9	1	0	0	3	-9
Florida State	13	2-3	0-0	0-0	3-2-5	1	4	0	1	0	1	-8
Georgia Tech	21	3-8	0-0	0-0	1-3-4	1	6	0	1	0	1	-9
Ohio State	15	0-0	0-0	0-0	0-5-5	2	13	3	0	2	2	-13
Maryland*	20	0-2	0-0	0-0	2-2-4	4	0	0	1	0	2	1
Denver*	25	6-7	0-0	0-1	0-5-5	2	12	1	0	0	1	28
Miami*	20	4-8	0-0	0-0	4-5-9	4	8	1	2	0	0	8
North Ala.*	26	7-11	0-0	0-1	3-8-11	2	14	1	1	1	1	21
Rutgers*	32	4-8	0-0	2-3	2-6-8	4	10	0	1	0	3	9
MSU*	31	5-8	0-0	2-3	2-7-9	4	12	0	1	0	1	11
Iowa*	29	4-4	0-0	0-0	1-5-6	2	8	1	3	0	1	-11
Indiana*	19	2-3	0-0	0-0	0-3-3	1	4	0	0	0	1	-11
Illinois*	17	1-5	0-0	3-4	1-4-5	4	5	0	1	0	0	-3
Michigan*	24	5-8	0-0	1-1	2-5-7	3	11	0	0	0	1	-2
Minnesota*	23	4-9	0-0	1-2	2-6-8	4	9	0	4	1	0	15
Nebraska*	21	2-6	0-0	0-2	3-5-8	3	4	1	1	0	0	-4
Northwestern*	19	3-4	0-0	1-3	2-6-8	1	7	0	0	0	2	-10
Indiana*	13	3-5	0-0	0-0	1-3-4	1	6	0	2	2	1	-5
Penn State*	26	6-10	0-0	6-7	3-8-11	3	18	0	1	0	1	1
Wisconsin*	19	3-8	0-0	0-0	0-5-5	5	6	0	1	1	2	-8
Illinois*	20	4-10	0-0	3-4	4-0-4	4	11	0	2	1	1	7
Rutgers	13	3-3	0-0	3-4	1-2-3	2	9	3	0	0	0	0
Northwestern	26	5-6	0-0	0-0	1-3-4	1	10	1	1	0	2	-6
Wisconsin												
Big Ten^												
Big Ten^												
Big Ten^												
Big Ten^												

^Big Ten Tournament



2021-22 Purdue Women's Basketball Combined Team Statistics All games

Page 1/1
as of Feb 25, 2022

Game Records

Record	Overall	Home	Away	Neutral
ALL GAMES	16-12	10-5	5-6	1-1
CONFERENCE	7-10	4-4	3-6	0-0
NON-CONFERENCE	9-2	6-1	2-0	1-1

Score by Periods

Team	1st	2nd	3rd	4th	OT	TOT
Purdue	462	430	509	529	8	1938
Opponents	417	423	478	551	13	1882

Team Box Score

No.	Player				Total		3-Point		F-Throw		Rebounds											
		GP-GS	MIN	AVG	FG-FGA	FG%	3FG-3FGA	3FG%	FT-FTA	FT%	OFF	DEF	TOT	AVG	PF	DQ	A	TO	BLK	STL	PTS	AVG
33	LAYDEN, Madison	27-27	915:31	33.9	111-318	.349	59-179	.330	36-43	.837	24	101	125	4.6	65	1	70	53	14	46	317	11.7
23	ELLIS, Abbey	28-28	796:54	28.5	110-239	.460	28-87	.322	68-78	.872	24	56	80	2.9	47	0	86	64	7	29	316	11.3
24	KYLE, Ra Shaya	9-9	173:35	19.3	39-71	.549	0-1	.000	21-28	.750	11	40	51	5.7	32	0	2	19	11	1	99	11.0
0	MOORE, Brooke	28-0	532:25	19.0	99-243	.407	33-91	.363	46-55	.836	16	36	52	1.9	50	0	27	52	6	24	277	9.9
5	HARDIN, Cassidy	28-28	871:03	31.1	79-225	.351	69-207	.333	17-22	.773	5	66	71	2.5	59	1	41	30	6	23	244	8.7
10	TERRY, Jeanae	28-28	819:52	29.3	75-183	.410	1-16	.063	43-65	.662	59	134	193	6.9	70	2	163	88	12	35	194	6.9
35	WOLTMAN, Rickie	28-19	560:46	20.0	84-150	.560	0-0	.000	25-43	.581	43	113	156	5.6	70	1	11	33	31	8	193	6.9
3	SMITH, Jayla	26-1	431:39	16.6	51-130	.392	16-53	.302	14-22	.636	13	37	50	1.9	23	0	20	26	10	22	132	5.1
14	LEARN, Ava	18-0	234:55	13.1	39-62	.629	0-7	.000	11-16	.688	21	28	49	2.7	49	3	6	13	12	6	89	4.9
2	DOUMBIA, Rokia	9-0	105:26	11.7	13-23	.565	3-7	.429	2-2	1.000	14	19	33	3.7	11	0	10	8	0	3	31	3.4
4	ORIYOMI, Mide	16-0	143:43	9.0	12-34	.353	2-11	.182	11-17	.647	10	17	27	1.7	16	0	6	16	1	2	37	2.3
30	GONY, Nyagoo	10-0	33:36	3.4	4-12	.333	0-0	.000	1-2	.500	6	3	9	0.9	6	0	0	7	3	0	9	0.9
13	STALLINGS, Ajah	2-0	05:35	2.8	0-1	.000	0-0	.000	0-0	.000	1	0	1	0.5	0	0	0	1	0	0	0	0.0
Team											47	56	103					19				
Total		28	5625		716-1691	.423	211-659	.320	295-393	.751	294	706	1000	35.7	498	8	442	429	113	199	1938	69.2
Opponents		28	5634		694-1673	.415	137-492	.278	357-495	.721	316	703	1019	36.4	431	8	375	422	88	184	1882	67.2

Team Statistics

	PURDUE	OPP
Scoring	1938	1882
Points per game	69.2	67.2
Scoring margin	+2.0	-
Field goals-att	716-1691	694-1673
Field goal pct	.423	.415
3 point fg-att	211-659	137-492
3-point FG pct	.320	.278
3-pt FG made per game	7.5	4.9
Free throws-att	295-393	357-495
Free throw pct	.751	.721
F-Throws made per game	10.5	12.8
Rebounds	1000	1019
Rebounds per game	35.7	36.4
Rebounding margin	-0.7	-
Assists	442	375
Assists per game	15.8	13.4
Turnovers	429	422
Turnovers per game	15.3	15.1
Turnover margin	-0.3	-
Assist/turnover ratio	1.0	0.9
Steals	199	184
Steals per game	7.1	6.6
Blocks	113	88
Blocks per game	4.0	3.1
Winning streak	0	-
Home win streak	2	-
Attendance	47885	33255
Home games-Avg/Game	15-3192	11-3023
Neutral site-Avg/Game	-	2-326

Team Results

Date	Opponent		Score	Att.
11/10/2021	at Western Ky.	W	79-69	1214
11/14/2021	Western Mich.	W	70-62	2062
11/17/2021	at Illinois St.	W	76-64	672
11/20/2021	Dayton	L	62-78	1938
11/22/2021	Marshall	W	70-60	1526
11/25/2021	vs West Virginia	L	57-65	401
11/27/2021	vs Florida St.	W	66-61	250
12/01/2021	Georgia Tech	W	53-52	1539
12/05/2021	Ohio St.	L	53-70	3236
12/08/2021	at Maryland	L	71-86	4254
12/12/2021	Denver	W	101-68	2791
12/19/2021	Miami (OH)	W	82-76	3006
12/21/2021	North Ala.	W	86-53	5457
01/02/2022	Rutgers	W	60-58	3074
01/09/2022	at Michigan St.	W	69-59	4220
01/13/2022	Iowa	L	66-79	3103
01/16/2022	Indiana	Lot	68-73	8505
01/20/2022	at Illinois	W	89-67	1038
01/24/2022	at Michigan	L	66-79	1845
01/27/2022	Minnesota	W	80-66	2901
01/30/2022	at Nebraska	L	66-81	4810
02/04/2022	Northwestern	L	67-80	2862
02/06/2022	at Indiana	L	57-64	7891
02/09/2022	Penn St.	W	81-77	2902
02/13/2022	at Wisconsin	L	52-54	2869
02/17/2022	Illinois	W	70-54	2983
02/20/2022	at Rutgers	W	70-59	2961
02/24/2022	at Northwestern	L	51-68	1481



2021-22 Purdue Women's Basketball Combined Team Statistics In Conference games

Page 1/1
as of Feb 25, 2022

Game Records

Record	Overall	Home	Away	Neutral
ALL GAMES	7-10	4-4	3-6	0-0
CONFERENCE	7-10	4-4	3-6	0-0
NON-CONFERENCE	0-0	0-0	0-0	0-0

Score by Periods

Team	1st	2nd	3rd	4th	OT	TOT
Purdue	252	262	292	322	8	1136
Opponents	251	265	292	353	13	1174

Team Box Score

No.	Player				Total		3-Point		F-Throw		Rebounds											
		GP-GS	MIN	AVG	FG-FGA	FG%	3FG-3FGA	3FG%	FT-FTA	FT%	OFF	DEF	TOT	AVG	PF	DQ	A	TO	BLK	STL	PTS	AVG
23	ELLIS, Abbey	17-17	516:48	30.4	74-168	.440	17-59	.288	42-50	.840	15	41	56	3.3	32	0	51	45	4	17	207	12.2
0	MOORE, Brooke	17-0	350:05	20.6	67-166	.404	23-62	.371	36-41	.878	6	29	35	2.1	32	0	14	34	3	12	193	11.4
33	LAYDEN, Madison	16-16	540:52	33.8	65-191	.340	35-108	.324	11-13	.846	12	59	71	4.4	41	1	34	28	10	27	176	11.0
35	WOLTMAN, Rickie	17-16	364:26	21.4	54-99	.545	0-0	.000	22-33	.667	27	75	102	6.0	50	1	6	22	19	5	130	7.6
5	HARDIN, Cassidy	17-17	540:10	31.8	39-139	.281	32-126	.254	10-13	.769	4	50	54	3.2	33	0	13	17	3	13	120	7.1
10	TERRY, Jeanae	17-17	530:46	31.2	47-119	.395	0-8	.000	19-32	.594	44	93	137	8.1	43	1	107	52	8	25	113	6.6
14	LEARN, Ava	14-0	222:21	15.9	38-60	.633	0-7	.000	11-16	.688	21	28	49	3.5	47	3	5	13	12	6	87	6.2
24	KYLE, Ra Shaya	1-1	20:19	20.3	3-8	.375	0-0	.000	0-0	.000	2	1	3	3.0	4	0	0	2	0	0	6	6.0
3	SMITH, Jayla	15-1	257:17	17.2	34-81	.420	12-34	.353	5-7	.714	5	19	24	1.6	14	0	12	16	7	12	85	5.7
2	DOUMBIA, Rokia	6-0	54:13	9.0	5-10	.500	3-6	.500	0-0	.000	8	5	13	2.2	6	0	2	4	0	1	13	2.2
4	ORIYOMI, Mide	5-0	15:49	3.2	2-4	.500	0-1	.000	2-2	1.000	0	1	1	0.2	5	0	0	4	0	0	6	1.2
30	GONY, Nyagoo	4-0	11:54	3.0	0-1	.000	0-0	.000	0-0	.000	2	1	3	0.8	4	0	0	4	1	0	0	0.0
Team											29	30	59					11				
Total		17	3425		428-1046	.409	122-411	.297	158-207	.763	175	432	607	35.7	311	6	244	252	67	118	1136	66.8
Opponents		17	3425		425-1021	.416	82-280	.293	242-326	.742	188	448	636	37.4	236	3	238	238	51	120	1174	69.1

Team Statistics

	PURDUE	OPP
Scoring	1136	1174
Points per game	66.8	69.1
Scoring margin	-2.2	-
Field goals-att	428-1046	425-1021
Field goal pct	.409	.416
3 point fg-att	122-411	82-280
3-point FG pct	.297	.293
3-pt FG made per game	7.2	4.8
Free throws-att	158-207	242-326
Free throw pct	.763	.742
F-Throws made per game	9.3	14.2
Rebounds	607	636
Rebounds per game	35.7	37.4
Rebounding margin	-1.7	-
Assists	244	238
Assists per game	14.4	14.0
Turnovers	252	238
Turnovers per game	14.8	14.0
Turnover margin	-0.8	-
Assist/turnover ratio	1.0	1.0
Steals	118	120
Steals per game	6.9	7.1
Blocks	67	51
Blocks per game	3.9	3.0
Winning streak	0	-
Home win streak	2	-
Attendance	29566	31369
Home games-Avg/Game	8-3696	9-3485
Neutral site-Avg/Game	-	0-0

Team Results

Date	Opponent		Score	Att.
12/05/2021	Ohio St.	L	53-70	3236
12/08/2021	at Maryland	L	71-86	4254
01/02/2022	Rutgers	W	60-58	3074
01/09/2022	at Michigan St.	W	69-59	4220
01/13/2022	Iowa	L	66-79	3103
01/16/2022	Indiana	Lot	68-73	8505
01/20/2022	at Illinois	W	89-67	1038
01/24/2022	at Michigan	L	66-79	1845
01/27/2022	Minnesota	W	80-66	2901
01/30/2022	at Nebraska	L	66-81	4810
02/04/2022	Northwestern	L	67-80	2862
02/06/2022	at Indiana	L	57-64	7891
02/09/2022	Penn St.	W	81-77	2902
02/13/2022	at Wisconsin	L	52-54	2869
02/17/2022	Illinois	W	70-54	2983
02/20/2022	at Rutgers	W	70-59	2961
02/24/2022	at Northwestern	L	51-68	1481

