

PURDUE

WOMEN'S BASKETBALL

1999 NCAA CHAMPIONS /// 3 FINAL FOURS /// 27 NCAA TOURNAMENT APPEARANCES /// 9 BIG TEN TOURNAMENT TITLES /// 7 BIG TEN REGULAR SEASON TITLES

2023-24 PURDUE BOILERMAKERS

	2023-24	Streak	Under Gearlds
Overall:	9-9	L4	45-35
Big Ten opponents (RS):	2-5	L4	18-24
Non-Conference (RS):	7-4	W1	25-7
Home:	8-2	L2	29-12
Away:	1-5	L4	12-16
Neutral:	0-2	L4	4-7
Post (BIG, NCAA, WNIT):	-	L2	2-4

TALE OF THE TAPE

PURDUE		MICHIGAN STATE
68.7	Points	86.4
1.9	Margin	19.6
66.8	Defense	66.8
.419 / .411	Field Goal % / Defense	.476 / .419
.336 / 6.4	3-Pt % / Per Game	.360 / 9.7
.329 / 5.8	3-Pt% Defense / Per Game	.325 / 5.9
.781 / 13.4	Free Throw % / Per Game	.746 / 14.1
35.5 / -0.1	Reb. Per Game / Margin	37.0 / 2.3
15.1 / 15.8	Assists / Turnovers	19.5 / 11.1
7.8	Steals	9.2
3.1	Blocks	3.9

2023-24 SCHEDULE

Date	P/O Rank	Opponent	Time	TV/Result
<i>October</i>				
29	-/-	Quincy (ex)	2 PM	W, 106-45

<i>November</i>				
6	-/4	at UCLA	8:30 PM	L, 92-49
12	-/-	Southern	4 PM	W, 67-50
16	-/RV	Texas A&M	7 PM	W, 72-58
20	-/-	vs. Florida\$	4 PM	L, 52-49
22	-/-	vs. Georgia\$	4 PM	L, 65-57
26	-/-	Southern Indiana	2 PM	W, 95-57

<i>December</i>				
1	-/-	at Dayton	7 PM	W, 67-59
3	-/-	Valparaiso	2 PM	W, 83-56
6	-/-	SEMO	7 PM	W, 83-57
10	-/-	at Minnesota	2 PM	L, 60-58
17	-/14	at Notre Dame	Noon	L, 76-39
20	-/-	Indiana State	11 AM	W, 79-63
30	-/-	Wisconsin	6 PM	W, 89-50

<i>January</i>				
2	-/-	Rutgers	7 PM	W, 77-76
6	-/-	at Maryland	4:30 PM	Postponed
10	-/3	Iowa	8 PM	L, 96-71
14	-/-	at Maryland	Noon	L, 88-66
18	-/-	at Penn State	7 PM	L, 80-67
21	-/16	Indiana	2 PM	L, 74-68
24	-/-	at Michigan State	6:30 PM	BIG+
28	-/-	Ohio State	2 PM	BIG+
31	-/-	at Nebraska	7 PM	BIG+

<i>February</i>				
5	-/-	Illinois	8 PM	BTN
11	-/-	at Indiana	2 PM	BIG+
14	-/-	at Northwestern	8 PM	BIG+
17	-/-	Nebraska	4 PM	BIG+
21	-/-	Michigan State	7 PM	BIG+
25	-/-	at Wisconsin	4 PM	BTN
28	-/-	Penn State	7 PM	BIG+



<i>March</i>				
3/3	-/-	at Michigan	8 PM	FS1
3/6-10		Big Ten Tournament		

* Indicates Big Ten Conference game All times subject to change
~ Baha Mar Pink Rankings are from the AP Top 25
Flamingo Championship
@ Big Ten Tournament

THE MATCHUP

GAME 19 - PURDUE BOILERMAKERS AT MICHIGAN STATE SPARTANS

Wednesday, Jan. 24 | 6:30 PM | East Lansing, Mich. | Breslin Center (14,759)

PURDUE BOILERMAKERS		MICHIGAN STATE
9-9, 2-5 BIG		
Head Coach: Katie Gearlds (Purdue, 2007)	RADIO 95.3 BOB FM Tim Newton - PxP	TV/STREAM BIG+ TBA - PXP TBA - Analyst
Record at Purdue (3rd): 45-35	LIVE STATS PurdueStats.com	WEBSITE PurdueSports.com
Career Record (11th): 273-85		
Ranking (NET/AP/Coach): 79 / - / -		
Streak: L4 Last 5: 1-4 Last 10: 4-6		
Last Game: 74-68, Loss, vs. No. 16 Indiana		
		Head Coach: Teri Moren (Purdue, 1992)
		Record at Michigan State (1st): 13-5
		Career Record (9th): 205-81
		Ranking (NET/AP/Coach): 19 / - / RV
		Streak: L1 Last 5: 2-3 Last 10: 6-4
		Last Game: 69-50, Loss, at Minnesota

THE OPENING TIP TEAM CHART ON LAST PAGE

- The Purdue women's basketball team heads back out on the road for the third time in the last four games for a Wednesday night clash against Michigan State.
- Purdue has a trio of players closing in on the 1,000-point club for their careers. Jeanae Terry is 53 points away from reaching 1,000 for her career. Abbey Ellis and Madison Layden have a chance to etch their names into the Purdue 1,000-point club with 61 and 89 points remaining, respectively.
- Rashunda Jones stepped scored 19.5 points per game over her last two outings with a career-best 23 points against Penn State. Jones is third among Big Ten freshmen at 10 points per game. Jones is the first Purdue freshman with three 20-point performances since the 2016-17 season.
- Mary Ashley Stevenson moved up third in Big Ten freshman scoring with 10 points per game in conference play with a 13-point outing against Indiana. Stevenson is one of nine rookies from a major conference with nine points, five rebounds and one assist per game this season.
- Caitlyn Harper tallied 18 points against Indiana to move her to 1,799 for her career. She is 29th on the NCAA active scoring list.

- Jeanae Terry is 25 assists away from reaching 500 for her Purdue career. Terry holds the program record for career assist-to-turnover ratio of 1.92.
- Averaging 5.7 assists and 7.0 assists per game, Terry and Iowa's Caitlin Clark are the only two players to rank in the top 10 of the Big Ten in rebounds and assists. Terry is one of eight players from a major conference averaging over five points, rebounds and assists this year.
- Madison Layden continues is shooting 48.2% from behind the arc this season to lead the Big Ten. The Purdue single-season record was set by Drey Mingo (48.2%) in 2010-11.
- The Boilermakers are shooting 77.5% from the line to rank 25th in the country and third in the Big Ten. Abbey Ellis sits fifth in the league with an 85% clip. Her career 87.5% mark at Purdue is second in program history to Courtney Moses' 90.6% (290-320).
- The Boilermakers are the only program in the nation this season with three sets of sisters on its roster. Thirty-nine other teams have at least one set of sibling.

SERIES HISTORY

Overall	44-37	Purdue and Michigan State has been a tight series since 2016-17, as the two clubs have split the previous 12 meetings heading into Wednesday night.
At Home	23-11	
On the Road	16-24	Last year, Purdue outlasted the Spartans in East Lansing overtime.
Neutral Site	5-2	The Boilermakers are 2-0 against Robyn Fralick, winning twice during her time at Bowling Green in 2019-20 and 2020-21.
Streak	Purdue, 1	
Under Gearlds	2-1	
Gearlds vs. Fralick	0-0	
Purdue vs. Fralick	2-0	
First Meeting	2/17/78, Away, Loss, 77-72	
Last Purdue Win	12/5/22, Away, Win, 76-71 (OT)	
Last Purdue Loss	2/21/21, Away, Loss, 73-76	

NUMBERS TO KNOW

34 Purdue's freshman class averaged 34 points over two games last week with 42 points against Penn State and 26 against Indiana.	6 Two freshmen have scored 10 or more points in six games this season, double the next highest total in the Big Ten.	183 Madison Layden moved up to eighth on Purdue's all-time 3-point chart, joining Stephanie White with 183 triples.
--	--	---

THE ROSTER

No.	Name	GP/GS	MPG	PPG	RPG	APG	Boiler Notes
1	Amiyah Reynolds						Out this year due to injury, recently started running the scout team
2	Rashunda Jones	14/0	18.2	10.0	2.6	1.6	3rd in Big Ten freshman scoring, 3 20-pt games leads BIG rookies
3	Jayla Smith	17/1	14.2	3.9	1.6	0.6	8 points vs. Iowa, most since season-high 13 vs. Florida
10	Jeanae Terry	18/18	29.5	5.1	6.0	5.7	2nd Big Ten player in history in the 800-reb, 600-ast, 200-stl club
11	McKenna Layden	17/0	9.9	1.4	1.4	0.5	Indiana All-Star, Reached 2020 IHSA title game w/ Madison
15	Mila Reynolds	11/0	7.0	2.0	1.0	0.2	Joined Purdue from Maryland in May, to play with sister Amiyah
20	Mary Ashley Stevenson	18/17	28.3	9.5	5.4	1.0	6 games with over 7 pts, 7 rebs, most by a BIG freshman this year
21	Emily Monson	11/0	5.1	1.1	0.7	0.7	Naismith High School All-America honorable mention
23	Abbey Ellis	18/18	29.2	13.7	3.3	2.4	Double figures in 16 games, 61 points from 1,000 as a Boilermaker
31	Sophie Swanson	11/0	9.4	5.4	1.4	0.4	Tore ACL last Feb, 22.8 pts per 40 mins.
32	Alaina Harper	15/0	5.6	0.7	0.9	0.0	On the same team with Caitlyn for the first time in their lives
33	Madison Layden	18/18	29.6	10.8	3.2	1.5	89 points from 1,000 for her career, 8th in Purdue career 3-pts (183)
34	Caitlyn Harper	18/18	28.6	11.2	4.3	1.4	1 point away from 1,800 in her career, hit 100th career triple vs. IU



PURDUE QUICK FACTS**UNIVERSITY INFO**

Location: West Lafayette, Ind. Founded: 1869
 Conference: Big Ten Enrollment: 52,211
 Colors: Old Gold & Black Nickname: Boilermakers
 President: Dr. Mung Chiang Athletics Director: Mike Bobinski
 Deputy A.D. / Senior Woman Administrator: Tiffini Grimes

COMMUNICATIONS CONTACT

Ian MacDougall - Associate Director (WBB Contact)
 Email - imacdoug@purdue.edu | Cell - 317.313.7486 | Office - 765.494.0529

PROGRAM HISTORY

First Season - 1975-76 (49th Season)
 All-Time Record - 932-545 All-Time Big Ten Record - 431-274
 Home Record - 499-178 Home Big Ten Record - 247-107
 Away Record - 291-278 Away Big Ten Record - 184-167
 Neutral Site Record - 142-89

POSTSEASON HISTORY

NCAA Championships - 1999 (Only one by a Big Ten program)
 Final Fours - 3 (1994-99-2001)
 Sweet 16 - 12 (1990-92-94-95-98-99-01-03-04-06-07-09)
 NCAA Appearances - 27 (1989-90-91-92-94-95-96-97-98-99-00-01-02-03-04-05-06-07-08-09-11-12-13-14-16-17-23)
 All-Time NCAA Tournament Record - 47-26
 WNIT/WNIT Appearances - 4 (1988-10-18-22)
 Big Ten Regular Season Titles - 7 (1991-94-95-97-99-01-02)
 Big Ten Tournament Titles - 9 (1998-99-00-03-04-07-08-12-13)

THE LAST TIME OUT**PURDUE 68, #16 INDIANA 74**

- The Purdue women's basketball team saw its upset bid against No. 16 Indiana come up just short in front of an electric Mackey Arena on Sunday afternoon, falling 74-68.
- The two clubs treated the 11,796 hand to a back-and-forth bout that featured 12 lead changed and seven ties.
- For the second time this season, the Boilermakers (9-9, 2-5) put five players in double figures. Caitlyn Harper led the way with 18 points and six rebounds. The sixth-year senior connected on her 100th career triples in the first quarter.
- After combining for 36 points the other night at Penn State, freshman tandem Mary Ashley Stevenson and Rashunda Jones both tallied 13 points. Madison Layden made a pair of 3-pointers to finish with 10 points, and Abbey Ellis notched her 16th game in double figures this season.
- The Boilermakers worked the ball inside to score 30 points in the paint for the 10th time this season. Led by Jeanae Terry's game-high eight rebounds, Purdue won the rebounding battle 32-26. Terry grabbed half of the Boilermakers' 14 offensive rebounds that turned into 13 points.

THIRD YEAR OF THE KG ERA

- Head coach Katie Gearlds is in her third season at Purdue after guiding the Boilermakers to back-to-back postseason bids, including the first NCAA Tournament appearance since 2017.
- In two short seasons, Gearlds has transformed Purdue back into an NCAA Tournament squad with eyes on taking the Boilermakers back to the same national spotlight from when she was on the floor 20 years ago.
- Gearlds took over the program 47 days before her first campaign in 2021-22 when Purdue was coming off a seven-win season. She guided Purdue to a 17-15 mark and reached the WNIT after the program failed to reach the postseason in the previous three years.
- Purdue finished the 2022-23 season with a 19-11 record and its first return to the NCAA Tournament since 2017.
- Gearlds joined Boilermaker legends Carolyn Peck and Lin Dunn as the only Purdue head coaches to post win improvements in each of their first two seasons.
- When Gearlds moved into the head coach role, Purdue had lost 19 straight games to ranked opponents. Over her first two years, Gearlds has racked up three ranked wins, including the program's first true road AP top-5 victory against No. 2 Ohio State in 2022-23.
- Gearlds was initially hired as the associate head coach to later become the head coach at the start of the 2022-23 season.

BOILER NOTES**BOILERMAKER BASKETBALL**

- Purdue Women's Basketball is in its 49th season in 2023-24.
- Purdue was the 40th program in NCAA Division I history to reach 900 wins.
- The Boilermakers are the only team from the Big Ten to win a national championship, hoisting the title in 1999.
- The program has reached the NCAA Tournament 27 times with 12 Sweet 16s, eight Elite 8s, three final fours and a trio of national championship game appearances.
- In addition to its NCAA success, Purdue owns the Big Ten record for most tournament titles with nine.

WAIT, HOW MANY SISTERS ARE ON THIS TEAM?

- If a team is a family, Purdue is taking that to a whole new level with three sets of siblings on the 2023-24 roster - Madison & McKenna Layden, Mila & Amiyah Reynolds, Caitlyn & Alaina Harper.
- The Boilermakers are the only team in the nation with three sets of sisters. Utah Tech is the only other program with more than one pair of siblings.
- Based on the research of a communications intern, 39 teams across Division I have one pair of sisters of the roster this year.
- McKenna and Madison Layden became the first Boilermakers to play on the floor together in program history, playing 6:29 together in the season opener at UCLA.
- Alaina Harper and Caitlyn Harper were the second set of siblings to play in the same game at Purdue, when Alaina checked in for her big sister in the fourth quarter against UCLA.

FRESHMAN OUTPUT

- With six freshmen on the roster, five active, the rookie class for the Boilermakers have quickly made an impact in West Lafayette.
- The six-player class was Gearlds' primary focus during her first years back at Purdue.
- The freshman class has combined to score over 40 points twice this season, which is the most of any Big Ten freshman class.
- Two Boilermaker freshmen have scored in double figures together in six games this season, a Big Ten best.
- Purdue's freshmen lead the Big Ten with 22.3 points per game and lead in points per league game with 22.4.
- Mary Ashley Stevenson joined the starting lineup in the second game of the season. She has finished in double figures nine times and posted one double-double.
- Rashunda Jones has scored 20 points or more three times this season, a first by a Purdue freshman since 2016-17, while touching double digits in seven outings.
- After missing the first five games of the year with an injury, Sophie Swanson has seen her minutes grow, including a career-high 10 points off the bench against Indiana State.
- McKenna Layden and Emily Monson have provided valuable minutes off the bench as their games continue to grow.

SCORING BY BIG TEN FRESHMAN CLASS (Per HerHoopStats.com)

School	PPG	BIG PPG	School	PPG	BIG PPG
Purdue	22.5	22.4	Northwestern	7.7	6.6
Nebraska	20.8	18.0	Indiana	4.5	1.4
Minnesota	18.7	12.6	Michigan State	3.5	0.0
Rutgers	14.3	15.1	Illinois	4.9	4.1
Wisconsin	12.6	9.4	Michigan	2.4	2.4
Maryland	9.2	4.9	Ohio State	2.9	2.8
Penn State	8.1	6.0	Iowa	0.2	0.6

PURDUE FRESHMAN BESTS THIS YEAR

Stat	Combined	Leader
Points	47, vs. Valparaiso	23, Jones at Penn State
3-Pointers	5, vs. Valparaiso	2, 5 times
Rebounds	20, vs. Valparaiso	11, at Stevenson at Minnesota
Assists	9, vs. Valparaiso	4, 2 times
Steals	4, 2 times	2, 3 times
Blocks	2, 2 times	2, Stevenson, vs. Valparaiso
Minutes	96, vs. Southern Ind.	36, Stevenson at Minnesota

STEVENSON & SPIDER

- Mary Ashley Stevenson and Rashunda Jones have been instant impacts for the Boilermakers as freshmen.
- Both have been named the Big Ten Freshman of the Week this season, marking the first time Purdue has had multiple honorees since 2016-17.
- Jones ranks third in Big Ten freshman scoring at 10.0 points per game, while Stevenson is fourth at 9.5.
- In conference play, Stevenson is third in scoring at 10.0 points and Jones is fourth at 8.8 points per game.
- Against Valparaiso, the duo achieved feats not reached by Purdue freshmen for over five years.
- Stevenson's 14 points and 10 rebounds against the Beacons marked the first points-rebound double-double by a Purdue rookie since Sam Ostarelli's 17 points, 14 rebounds against Evansville on Dec. 19, 2009.
- Jones was the first Purdue freshman to reach 20 points twice since Karissa McLaughlin in 2017-18 with 22 points vs. Valpo.

BIG FRESHMEN AVERAGING 8 PPG, 3 RPG

Player	School	PPG	RPG
Natalie Potts	Nebraska	10.8	5.7
Mary Ashley Stevenson	Purdue	9.5	5.4
Grace Grocholski	Minnesota	10.9	4.6
D'Yanis Jimenez	Wisconsin	8.5	3.3

THE NAME IS MARY ASHLEY STEVENSON

- Mary Ashley Stevenson has been one of the top rookies in the Big Ten this season, averaging 9.5 points and 5.4 rebounds per game. In league play, she's averaging 10.0 points and 5.7 rebounds.
- Stevenson leads the team in rebounding and is fifth in scoring. She is second among Big Ten rookies in boards and fourth in points.
- Stevenson has the most games among Big Ten freshmen this season with at least eight points and eight rebounds with four.
- The New Yorker has grabbed the most rebounds by a Purdue freshman since Tamara Farquhar in 2017-18 (163) and scored the most points by a Boilermaker rookie since Madison Layden in 2020-21 (200).
- Stevenson was tabbed the Big Ten Freshman of the Week after averaging 12 points and eight rebounds in wins over Wisconsin and Indiana State.
- In her college debut at UCLA, she had eight points, two rebounds one assist, one steal and one block at No. 4 UCLA, the first Purdue rookie since Sam Ostarelli in 2009 to record at least five points and one block, rebound, assist and steal in an opener.
- Her double-double vs. Valpo was the first points-rebounds by a Purdue rookie since 2009.
- She won three state championships (2 NY, 1 SC) and went 80-12 with 2,552 points and 1,575 rebounds during her prep career.
- Before the summer, she legally changed her last name from Groot to Stevenson, taking the name of her stepdad Gary.

THE SPIDER - RASHUNDA JONES

- Rashunda Jones was the first South Bend Washington commit before the Reynolds sisters joined to reunite the powerful trio.
- Jones returned to the rotation against Wisconsin after missing the previous four games as a medical scratch.
- Coming off the bench, Jones is fourth on the team with 10.0 points per game. She has hit double figures in seven games with three of them topping 20 points.
- She was the first Boilermaker rookie to score 20 points three times since Dominique Oden in 2016-17.
- She earned Big Ten Freshman of the Week, Purdue's first since 2017-18, when she scored 20 points against Texas A&M.
- Her 23 points against Penn State were the most by a Boilermaker freshman since Dominique Oden in 2016-17. Jones' performance at Penn State featured 10 made free throws, the most by a Purdue rookie since KK Houser in 2009-10.
- Jones was tabbed the 2023 Indiana Miss Basketball and a member of the Max Preps National Player of the Year Watch List.
- She guided the Panthers to a 95-18 record in her career and a 2022 IHSA 3A Championship and three conference titles.
- Her versatility earned her the nickname "Spider" from her high school head coach and Amiyah & Mila's father - Steven.
- She finished her career with 1,791 points, 497 rebounds, 427 assists and 419 steals.

BOILER NOTES**SNIPER SOPHIE SWANSON**

- A pure shooter and scorer, Sophie Swanson joined the program after a stellar prep career at Barrington Prep in Illinois.
- Swanson is averaging 5.4 points in 9.4 minutes per game. Her per 40-minute average for points is 22.8.
- Swanson made her collegiate debut against Southern Indiana with two points and two rebounds after missing the opening five games rehabbing from her high school injury.
- She scored a career-best 10 points against Indiana State.
- Swanson was named the 2022 Illinois Miss Basketball and 4A Player of the Year following her junior campaign.
- She set the school record for points in a season (750), 3-pointers in a year (86), thrice set the school mark for points in a game (40, 37, 36).

LETTING IT FLY

- Shoot before you turn it over - that's the goal for Purdue's offense.
- The Boilermakers are 6-2 when making seven or more triples this season and 28-15 when hitting that mark in the Gearlds era.
- Purdue has made 10 or more 3-pointers in 14 games in the Katie Gearlds era. Prior to her return, the Boilermakers tallied just 22 double-digit triple games in the preceding 12 seasons.
- The Boilermakers have not been shy about shooting the three during Katie Gearlds' time on the sideline, notching the first and second most made and attempted triples in program history over the last two years.

MONEY MAD\$

- Senior Madison Layden is in her fourth campaign as one of the top all-around producers for the Boilermakers.
- Layden is third on the team with 10.8 points per game.
- She leads the Big Ten in 3-point percentage with a 48.2% clip (41-83), her 55.2% in Big Ten games also leads the league.
- Shooting 40.5% as a freshman in 2020-21, Layden is the only Boilermaker to shot over 40% from distance since Courtney Moses did it in back-to-back seasons in 2012-13 and 2013-14.
- The senior's 3-point splits are impressive: Home - 52.9%, Away - 43.5%, Wins - 54%, Big Ten - 55.2%, Non-Conference - 44.6%.
- Layden has climbed up to eighth in program history in career triples, making 183 during her time in West Lafayette.
- Layden got engaged during the holiday break to Rees Zay, a Purdue graduate and former practice player of the program.
- She set the single-game Purdue freshman record for triples in a game with six against Iowa in 2020-21.

HARPER HITTING HER STRIDE

- In her sixth year of college basketball, Caitlyn Harper might be in the best shape of her career playing over 30 minutes in 10 games. She bested 30 minutes just thrice last year.
- Harper scored in double figures in 12 outings, sitting second on the team with 11.9 points per game at a 55.9% shooting clip.
- Harper leads the team in Big Ten action with 14.1 points per game while shooting 59.7% from the field.
- She is one of 11 players from the Big Ten averaging double figures and shooting over 55% from the field.
- Harper is one point away from 1,800 points for her career and made her 100th career triple against Indiana this year.
- After a rough night without scoring against Valpo, Harper bounced back to drop her Purdue best 22 points against SEMO.

ELITE ELLIS

- Abbey Ellis is her final campaign in West Lafayette after honorable mention All-Big Ten nods each of the last two years.
- The Australian leads the team in scoring with 13.7 points per game and has reached double figures in 16 outings.
- Ellis is fifth in the Big Ten with a 85.7% mark at the line (51-60). Her career 87.5% mark at Purdue is second in program history.
- Ellis paired with Rashunda Jones to become the first Boilermaker duo to score 20 points in a game since 2019-20 when they both scored 20 against Texas A&M.
- The fifth-year senior dropped 28 points against Indiana State, finishing one shy of her Purdue career high.
- Ellis' 10-game double-digit streak to start the year marked the second straight season Purdue had a player hit double figures in the first 10 games, following Lasha Petree's 11 games last year.

NUMBERS TO KNOW IN THE GEARLDS ERA

- Purdue is 38-6 when leading after the first quarter and 43-7 when taking a lead into the fourth quarter.
- Purdue is 28-15 when knocking down seven or more 3-pointers.
- Purdue is 18-12 when shooting 35% from distance or better and 37-12 when shooting 40% or better overall, including 15-1 with a field goal clip above 50%.
- The Boilermakers are 31-7 when outrebounding opponents.
- The Boilermakers hold a 31-6 record when scoring 70 or more points, while also posting a 40-11 mark when holding opponents below that mark.

MILESTONE WATCH

- Abbey Ellis is 61 points away from joining the 1,000-point club at Purdue. The Australian already has over 1,700 points in her career.
- Madison Layden needs 89 points to join the 1,000-point club.
- Jeanae Terry needs 132 rebounds for 1,000 in her career, 85 for 600 points at Purdue and 53 points for 1,000 in her career.
- Terry is 25 assists away from 500 during her time in West Lafayette, which would make her the seventh player in program history to hit that mark.
- Jayla Smith is 59 points away from 500 for her career.

TERRY'S TIDBITS

- Jeanae Terry has shown herself to be even more of a pass-first point guard in her final season of college basketball.
- The fifth-year is averaging 5.1 points, 7.0 rebounds and 5.7 assists per game with a 1.9 assist-to-turnover ratio.
- Terry is one of three players from the Big Ten averaging five points, rebounds and assists per game (Shyanne Sellers - Maryland and, unsurprisingly, Caitlin Clark - Iowa).
- Terry is third in Big Ten assists and ninth in rebounding, while sitting fourth in assists and fifth rebounds in league games.
- She nearly recorded a triple-double against Wisconsin with 13 points, 12 rebounds and nine assists.
- Terry notched the first non-point double-double of the year nationally against SEMO with 11 assists and 10 rebounds.
- Accomplishing the feat four times, Terry has the most non-point double-doubles since at least 2009-10.
- She is the only active player in the country to be a part of the 800-rebound, 600-assist, 200-steal club and the second in Big Ten history, after Samantha Logic from Iowa from 2012-15.
- During her time in West Lafayette, Terry has set the program record for triple-doubles and non-point double-doubles.
- Terry has 475 assists at Purdue to rank eighth on the program's all-time charts.
- Earlier this season, Terry passed Katie Gearlds, Kelly Komara and Ukari Figgs on the all-time assist charts.

HOME SWEET HOME

- Purdue is 8-2 at Mackey Arena, scoring 78.4 points per game, while holding opponents to just 63.7 points per night.
- The Boilermakers have shot 46.9% from the field and 37.7% from distance at home, compared to marks of 36.6% and 33.3% when on the road this year, respectively.
- Winning their first eight games at home this season, Purdue reached its first 10-game winning streak since Katie Gearlds' playing days, a 12-game stretch from March 19, 2006, against Missouri State to Jan. 25, 2007, against Northwestern.
- Purdue's longest home winning streak is 26 games that spanned from Dec. 2000 to March 2002 when associate head coach Kelly Komara laced them up for the Boilermakers.

DISHING OUT DIMES

- The Boilermakers are 4-0 this year and 17-0 over the last three seasons when dishing out 20 or more assists.
- Against Southern, the Boilermakers dished out 19 assists on 20 made field goals. They were the fifth most of the Gearlds era, while the 95% assist rate was the best by Purdue since 2015 against Minnesota (24 ast, 25 FGM).
- Purdue then dished out 24 assists against Southern Indiana, which ranked third in the Gearlds era.

25 YEARS FOR THE CHAMPS

Record - 34-1, 16-0 Big Ten

Big Ten Finish - 1st Place

Big Ten Tournament - Champions

Championship Game

Purdue 62, Duke 45 (Ukari Figgs 18 pts)

Season Honors

USBWA All-America - Stephanie White

AP & WBCA All-America - Stephanie White,

Ukari Figgs

Honda Award & Wade Trophy - Stephanie White

Big Ten Player of the Year - Stephanie White

NCAA Tournament Most Outstanding Player - Ukari Figgs

All-Tournament Team - Ukari Figgs, Stephanie White, Katie Douglas

AP & Naismith National Coach of the Year - Carolyn Peck



Purdue celebrates the 25th anniversary of its 1999 National Championship, the only one in the Big Ten in women's basketball. Led by National Coach of the Year Carolyn Peck and a star-studded list of greats in Stephanie White, Ukari Figgs, Camille Cooper, Katie Douglas, Michelle Duhart and Kelly Komara, Purdue knocked off 10 ranked opponents, including No. 1 Tennessee in the season opener.

After posting a perfect 16-0 record in Big Ten play and winning the league tournament, Purdue carved through the NCAA Tournament as a No. 1 seed, before defeating Duke 62-45 in the National Championship Game.

INDIANA MISS BASKETBALL

- Jayla Smith is the 10th Indiana Miss Basketball to play at Purdue, winning the award in 2021.
 - The long history of Purdue welcoming the state's top player extended back to 2003, when Katie Gearlds became the fifth honoree to pick West Lafayette.
 - Madison Layden (2020) and Rashunda Jones (2023) finished as runner-ups in their senior campaigns.
 - Purdue holds the record for most Indiana Miss Basketball winners, followed by Indiana, Notre Dame, Tennessee tied for second with four.
- | | |
|------------------------------------|----------------------------------|
| 1984 Sharon Versyp, Mishawaka | 1991 Jennifer Jacoby, Rossville |
| 1995 Stephanie White, Seeger | 1998 Kelly Komara, Lake Central |
| 2003 Katie Gearlds, Beech Grove | 2005 Jodi Howell, Alexandria |
| 2008 Brittany Rayburn, Attica | 2010 Courtney Moses, Oak Hill |
| 2017 Karissa McLaughlin, Homestead | 2021 Jayla Smith, Lawrence North |

MACKEY ARENA

Broke Ground: July 1965 | First Game: Dec. 2, 1967 | Capacity: 14,876

First Women's Game: Dec. 2, 1975 | Purdue 78, Illinois 74

Gearlds Overall: 29-12 | Non-Con: 19-1 | BIG: 10-11

Purdue Overall: 499-178 | Non-Con: 252-71 | BIG: 247-107

Home Wins vs. Ranked Teams: 50

LARGEST CROWDS OF KG ERA

Attendance	Date	Opponent	Result
14,876	2/5/23	No. 4 Indiana	L, 69-46
14,876	1/10/24	No. 3 Iowa	L, 96-71
11,796	1/22/24	No. 16 Indiana	L, 74-68
8,005	1/16/22	No. 5 Indiana	L, 73-78 (OT)
7,177	12/20/23	Indiana State	W, 79-63

STARTING LINEUPS

Lineup (Record)	Games
1. Smith, Terry, Ellis, Layden, Harper (0-1)	1
2. Terry, Stevenson, Ellis, Layden, Harper (9-8)	2-18

Player	19/20	21	22	23	24	Total	Record^
1 Reynolds	-	-	-	-			
2 Jones	-	-	-	-			
3 Smith	-	-	1	3	1	5	1-4
10 Terry	-/11*	23*	32	30	18	114*	45-35
11 Layden	-	-	-	-			
15 Reynolds	-	-	-	-			
21 Monson	-	-	-	-			
20 Stevenson	-	-	-	-	17	17	9-8
23 Ellis	-/29*	23*	31	18	18	119*	37-30
31 Swanson	-	-	-	-			
32 Harper	-	-	-	2		2*	
33 Layden	-	21	28	13	18	80	40-40
34 Harper	3*/5*	10*	32*	29	18	97*	27-20

* Includes starts at previous school | ^ Record at Purdue



BIG TEN STANDINGS

	Big Ten	Overall	Streak
Iowa	7-1	18-2	L1
Indiana	7-1	16-2	W2
Ohio State	6-1	15-3	W5
Nebraska	5-3	13-6	L1
Minnesota	4-3	14-4	W1
Penn State	4-3	13-5	W3
Michigan	4-3	13-6	W1
Maryland	4-3	12-6	W1
Michigan State	3-4	13-5	L1
Purdue	2-5	9-9	L4
Illinois	2-5	8-9	L1
Northwestern	2-5	7-11	L2
Wisconsin	1-6	8-9	L3
Rutgers	0-8	6-15	L10

NATIONAL RANKINGS

	National	BIG	Stat
Assist-to-Turnover	97	11	0.97
Assists per Game	77	10	15.1
Bench Points Per Game	181	9	18.7
Blocked Shots per Game	187	10	2.9
Field-Goal %	124	12	42.1
Field-Goal % Defense	246	11	41.7
Fouls Per Game	76	4	15.3
FT Attempts Per Game	152	8	17.0
FT Percentage	25	4	77.5
FT Made Per Game	89	7	13.2
Rebound Margin	197	12	0.4
Defensive Rebounds Per Game	210	13	24.6
Offensive Rebounds Per Game	241	10	10.7
Rebounds Per Game	233	14	35.3
Scoring Defense	239	8	67.2
Scoring Margin	189	11	1.5
Scoring Offense	131	11	68.7
Steals Per Game	187	8	7.7
3-Point Attempts Per Game	191	10	18.6
3-Point Percentage	79	9	33.8
3-Point Percentage Defense	321	13	35.2
3-Pointers Per Game	152	10	6.3
Turnover Margin	165	10	0.72
Turnovers Forced Per Game	178	7	16.3
Turnovers Per Game	150	10	15.6
Winning Percentage	187	10	50.0

INDIVIDUAL NATIONAL RANKINGS (TOP-50)

TOP 50 RANKINGS	National	BIG	Stat
Madison Layden			
3-Point Percentage	4	1	48.2
Jeanae Terry			
Assists	21	3	102
Assists Per Game	22	3	5.7

BOILER NOTES**JT - START UNKNOWN, FINISH UNFORGETTABLE**

- "Start Unknown, Finish Unforgettable" is the mantra Jeanae Terry lives by so much she has a tattoo featuring that phrase.
- Last season, she was one of three players (Iowa's Caitlin Clark and Notre Dame's Olivia Miles) to record at least 6.0 points, rebounds and assists per game.
- Terry and Clark are the only two players in the nation to dish out 150 assists and haul in 200 rebounds in each of the last two years.
- Terry holds the second and third spots on the single-season assist lists, as well as the program's lead for career assist-to-turnover ratio.
- The Detroit native is the only player in Purdue men's or women's basketball history to amass multiple triple-doubles in a season and a career, a feat she achieved during the 2021-22 campaign.
- In both of her triple-double performances, the last category Terry hit double digits in was points.
- Terry is also the only Boilermaker to record a non-point double-double. Jeanae Terry recorded the mark four times since the start of last season, the most of any player in the nation since 2009.

TERRY'S NATIONAL RECOGNITION

	Stat	National	BIG
Assist-to-Turnover	1.89	83	7
Assists	102	21	3
Assists Per Game	5.7	22	3
Rebounds	126	157	11
Rebounds per Game	7.0	210	9
Non-Point Double-Doubles	1	1	1

800 REBOUNDS, 600 ASSISTS, 200 STEALS IN BIG TEN HISTORY

Player	School	Rebs	Asts	Stls
Samantha Logic	Iowa, 2012-15	922	898	260
Jeanae Terry	Purdue/Illinois, 2020-Pres.	868	667	215
<i>Approaching</i>				
Caitlin Clark	Iowa, 2021-Pres.	842	952	176

**Also the only players in Big Ten history with 800 rebounds and 600 assists*

TERRY'S NON-POINT DOUBLE-DOUBLES

Opponent, Date	Asts	Rebs	Pts	Other
SEMO, 12/3/23	11	10	1	1 blk, 1 stl
Penn State, 2/22/23	10	10	9	8 stls
Murray State, 11/13/22	10	10	9	1 stl
Marshall, 11/10/22	10	10	5	2 stls

PURDUE TRIPLE-DOUBLES

Name	Opponent, Date	Pts	Rebs	Asts/Blks
Jeanae Terry	Minnesota, 1/27/22	10	11	12 asts
Jeanae Terry	Miami, 12/19/21	11	12	10 asts
Stephanie White	Indiana, 1/22/99	20	11	10 asts
Danielle Campbell	Butler, 11/17/07	12	11	11 blks

ACTIVE BIG TEN LEADERS

Assists	School	Stat	NCAA Rank
Caitlin Clark	Iowa	952	1
Jeanae Terry	Purdue/Illinois	668	8
Jaz Shelly	Nebraska	558	14
Makenna Marisa	Penn State	484	35

Rebounds	School	Stat	NCAA Rank
Mackenzie Holmes	Indiana	903	34
Jeanae Terry	Purdue/Illinois	868	47
Caitlin Clark	Iowa	842	56

PACKING MACKEY

- Head coach Katie Gearlds continues to bring the magic back to Mackey Arena, as more fans come through the turnstiles.
- Purdue has topped 5,000 fans in six home games this season and rank 12th nationally and fourth in the Big Ten at 6,528.
- Purdue has sold its most season tickets since 2012-13.
- Purdue has sold out Mackey Arena four times in program history and twice under head coach Katie Gearlds.
- Following renovations of Mackey Arena, the new attendance number grew to 14,876.
- Purdue set a new attendance record last season with a capacity crowd when it hosted Indiana for its first sellout since 2000.
- The Boilermakers are the eighth team this season to host a game with a crowd over 14,000.

SELLOUTS AT MACKEY ARENA

Player	School	Attendance	Result	Lead Scorer
1/10/2024	Iowa	14,876	L, 96-71	Abbey Ellis - 15
2/5/2023	Indiana	14,876	L, 69-46	Lasha Petree - 13
2/27/2000	Iowa	14,123	W, 73-59	Katie Douglas - 24
2/14/1999	Ohio State	14,123	W, 88-58	Camille Cooper - 19

RANKED MATCHUPS

- Head coach Katie Gearlds has guided Purdue to three ranked wins during her time in West Lafayette. Purdue had lost its last 25 games to ranked opponents before the Gearlds era started.
- Purdue recorded back-to-back ranked wins for the first time since 2018 during the 2022-23 campaign.
- With a 73-65 win over No. 2 Ohio State in Columbus, the Boilermakers tallied their first ever top-five win on the road.
- Purdue snapped the program's 19-game skid to ranked teams with a 66-61 win over No. 17 Florida State last season.
- Gearlds was 23-22 against ranked teams during her playing days in West Lafayette.
- Purdue has 19 wins in program history against AP Top-5 teams.

LOCK DOWN DEFENSE

- The Boilermakers have held nine opponents to 60 or fewer points this season.
- Purdue is 7-2 in those games this year and 22-3 under Katie Gearlds when keeping a team to 60 points or fewer.
- Purdue held Wisconsin to just 50 points on Dec. 30, the fewest points given up to a Big Ten team by Purdue since 2019.
- The Boilermakers are generating 14.5 points per game off 16.3 opponent turnovers this season.

MAGIC MCKENNA

- McKenna Layden has shown poise on the floor this year as a quality defender rebounder and one of the first subs.
- She reunited with her sister Madison following a 78-17 career record at Northwestern High School and was named an Indiana All-Star as a junior and senior.
- She set the Northwestern single-game record with 47 points with nine 3-pointers against Taylor in 2021.
- In addition to her success playing for her mother Kathie, including reaching the IHSAA 4A Championship Game as a freshman alongside Madison, Layden won two sectional titles in volleyball and tennis each.

MILA MAKES HER WAY HOME

- Mila Reynolds continues to see her spot in the rotation grow each week as a post option off the bench.
- Reynolds set career highs with six points and five rebounds against Valparaiso.
- She made her first career 3-pointer against Indiana State.
- She returned to her home state and reunited with her little sister Amiyah after playing her freshman season at Maryland.
- She won the 2022 IHSAA 3A State Championship with Amiyah and Rashunda Jones.
- The eldest Reynolds totaled 2,099 career points, second in Panther history behind 2010 graduate Skylar Diggins-Smith.

BOILER NOTES**OUR 10TH INDIANA MISS BASKETBALL**

- After a slow start to the year, Jayla Smith has started to find more consistency with 4.3 points per game.
- She emerged as the top sub off the bench last season when she set career highs for single-game and season stats.
- Smith tallied 7.8 points per game while shooting 45.5% from the field and finished second on the team with 30 steals.
- Smith's biggest impact came with the Boilermakers' season on the line in the Big Ten Tournament. The Indianapolis native laced a wing 3-pointer with less than five seconds remaining and down one to beat Wisconsin 57-55, a victory that likely edged Purdue into the NCAA Tournament.

FRESHMEN STAND STALL IN OPENER

- Against UCLA, the active freshman quartet of Mary Ashley Stevenson, McKenna Layden, Rashunda Jones and Emily Monson combined for 20 points.
- The output was the most by a Purdue freshman class in a season opener since Karissa McLaughlin went for 21 points in the season opener against Central Michigan in 2017-18.
- Stevenson finished with a rookie best eight points, two rebounds, two assists, one block and one steal. She was the first Purdue freshman to score five points and record a block, steal, rebound and assist to start a year since Sam Ostarello against Western Illinois in 2009-10.
- Stevenson, Layden and Jones saw early action against the Bruins. The trio were on the floor together for a combined 10:57 during their career game at Purdue.

MURFREESBORO MONSON

- Emily Monson has taken steps forward during her time on the court this season, making 3-pointers against UCLA and Valpo. She dished out a quartet of assists in eight minutes vs. Valpo.
- She came to West Lafayette after garnering an Naismith High School All-America honorable mention nod.
- Monson powered Blackman High School throughout her career going 107-16 with an 81-8 mark as a three-year starter.
- Monson finished her career with 1,066 points, tallying a career-best 15.8 points per game as a senior. She recorded more points her senior season than her first three years combined.

ALIRIGHT ALAINA

- Alaina Harper has been one of the program's most improved players since the start of the summer.
- Alaina and her sister Caitlyn are on the same team for the first time in their lives.
- Gearlds has said repeatedly that she would have loved to play with a selfless player like Alaina on the court to get her open.
- Following a freshman season at Grand Canyon that saw her average five points and 2.2 rebounds, Alaina transferred to Purdue to play with Caitlyn and be closer to home.
- She was tabbed the No. 6 player in the state by prep Girls Hoops and was named WBCA First Team All-State in Wisconsin twice.

PURE LEADER AMIYAH REYNOLDS

- Amiyah Reynolds completed a prolific career for South Bend Washington, going 95-18, winning an IHSAA State Champion and three conference titles.
- Reynolds ranked second in South Bend Washington history with 564 assists.
- Her 1,000th point came off an assist from Rashunda Jones.
- Sadly, due to an injury that ended her senior campaign in February, Reynolds will redshirt for the 2023-24 season.
- Despite sitting out drills, Gearlds has made a point to work with Reynolds during practice to ingrain her in the offense.

THE NEXT GENERATION

- National Signing Day brought Purdue a trio of talented high schools seniors, as Katie Gearlds welcomed Jordyn Poole, Lana McCarthy and Kendall Puryear to the Boilermaker family.
- All three players were named McDonald's All-America Game nominees.
- Out of Fort Wayne Snider High School, Poole is a 5-7 guard and a candidate for Indiana Miss Basketball. Poole was the No. 54 player in the nation and averaged 16.7 points, 3.6 rebounds and 4 assists per game as a junior. Her uncle is Purdue legend Roosevelt Barnes and cousin was Purdue Big Ten Player of the Year Caleb Swanigan.
- Puryear, a 6-2 forward from Lee's Summit, Mo., averaged 15.9 points, 9.9 rebounds and 1.6 assists per game as a junior to be ranked the No. 2 player in the state.
- McCarthy, a 6-4 forward from Bedford, N.H., is the No. 1 player in the state and averaged 21.7 points per game while reaching her third straight state championship game. McCarthy also won four straight volleyball state titles, set the state record for blocks and was named the New Hampshire Volleyball Player of the Year.

NON-CONFERENCE DOMINANCE

- Purdue has a 25-7 non-conference mark under Gearlds.
- The Boilermakers capped the non-conference campaign with their 18th straight home win against non-conference opposition (including postseason), setting a new program record.
- Purdue's 25 regular season non-conference wins since the start of the 2021-22 campaign rank third among Big Ten teams.
- Last season, the Boilermakers went 9-1 for the third-best clip in team history and the best since 2003-04.
- Purdue went 9-2 in regular season non-conference action during Gearlds' first campaign, which tied for the second best mark by a first-year head coach at Purdue.

DOWN UNDER DOWNTOWN ABBEY

- Abbey Ellis is her final campaign in West Lafayette after honorable mention All-Big Ten nods each of the last two years.
- Ellis was one of the most clutch free throw shooters in the country last season finishing third nationally at 91.7% while leading the Big Ten overall.
- Ellis is one of Purdue's go-to options in tight situations averaging 11.9 points per game during her time in West Lafayette with a 46.1% clip from the field and 34.4% from behind the arc.
- She joined the 1,500-point club for her career last season.
- In the Big Ten Tournament quarterfinals against Iowa last year, Ellis made her 100th career start.
- She earned a spot on the Big Ten Honor Roll following wins over No. 22 Illinois and No. 2 Ohio State last season.
- Purdue's first Australian rocks a ribbon in her hair during games from a selection that her mother sends her to wear.

BEEN THERE. THEY'RE BACK

- Purdue's coaching staff features a trio of alumnae who left their marks on the program during their playing days.
- Head coach Katie Gearlds was one of the best pure scorers in Purdue history, reaching four NCAA Tournaments, three Sweet 16s and an Elite Eight. She continues to rank in the top-10 of numerous career stat categories and was named an All-American in 2007 as a senior.
- 1999 National Champion and new associate head coach Kelly Komara returned to West Lafayette for her second stint on the sidelines. Komara was the 2002 Big Ten Defensive Player of the Year and helped the Boilermakers reach two national title games, winning the lone championship in Big Ten women's basketball.
- Alex Guyton is in her fifth season on staff and third as an assistant coach. Guyton reached three NCAA Tournaments and one the Big Ten championship her four-year career for the Boilermakers
- Another new addition to the coaching ranks at Purdue is dynamic recruiting assistant coach Mark Stephens. After spending the last five seasons on staff at Toledo and Xavier, Stephens returns to the state to lead the Boilermakers' posts and recruiting operations. Stephens' in-state ties run deep

PURDUE SPECIALTY STATS (PURDUE/OPP)

	Off TO	Paint	2nd-Ch.	Fast B.	Bench
UCLA	9-26	20-40	8-13	2-9	20-18
Southern	6-14	22-14	3-2	4-0	4-10
Texas A&M	26-7	34-22	8-9	7-4	20-13
Florida	15-10	30-24	7-12	4-2	17-10
Georgia	8-20	26-36	14-19	15-14	10-36
USI	19-12	36-26	10-6	11-0	36-16
Dayton	13-12	30-26	9-20	5-2	11-26
Valparaiso	17-17	32-20	5-0	18-7	45-21
SEMO	25-4	42-32	13-12	14-11	20-22
Minnesota	10-17	24-22	7-14	11-2	0-5
Notre Dame	6-26	14-44	4-13	5-26	14-18
Indiana State	19-15	22-22	12-13	6-0	22-30
Wisconsin	25-5	40-26	16-7	10-0	21-29
Rutgers	16-4	32-24	15-16	7-2	21-4
Iowa	16-11	20-36	6-17	0-9	15-30
Maryland	6-25	26-38	10-12	7-16	14-25
Penn State	13-21	30-32	11-9	8-16	34-39
Indiana	13-15	30-18	13-9	4-2	13-2
MSU					
Ohio State					
Nebraska					
Illinois					
Indiana					
Northwestern					
Nebraska					
MSU					
Wisconsin					
Penn State					
Michigan					
Totals	262-261	510-502	171-203	138-122	337-354
Averages	14.5-14.5	28.3-27.9	9.5-11.3	7.6-6.8	18.7-19.7

PURDUE SCORING BY CLASS

	Fr.	So.	Jr.	Sr.	5th/6th
UCLA	20	0	4	0	25
Southern	17	0	0	21	29
Texas A&M	22	0	0	8	42
Florida	10	0	13	0	26
Georgia	21	0	0	14	22
USI	38	2	8	16	31
Dayton	15	0	4	13	35
Valparaiso	47	6	6	10	14
SEMO	21	4	6	16	36
Minnesota	8	0	0	17	33
Notre Dame	13	2	4	2	18
Indiana State	24	7	2	11	35
Wisconsin	26	2	6	14	41
Rutgers	23	3	2	19	30
Iowa	11	4	8	10	38
Maryland	21	0	1	13	31
Penn State	42	2	3	0	20
Indiana	26	0	0	10	32
MSU					
Ohio State					
Nebraska					
Illinois					
Indiana					
Northwestern					
Nebraska					
MSU					
Wisconsin					
Penn State					
Michigan					
Totals	405	32	67	194	538
Averages	22.5	1.8	3.7	10.8	29.9

TOP PERFORMANCES *includes previous school

Triple-Double	23-24	Career
Jeanae Terry		2
Double-Double	23-24	Career
Jeanae Terry	2	16*
Caitlyn Harper	1	1
Mary Ashley Stevenson	1	1
Score 10+ Points	23-24	Career
Caitlyn Harper	12	93*
Abbey Ellis	16	84*
Madison Layden	13	49
Jeanae Terry	2	33*
Jayla Smith	1	15
Mary Ashley Stevenson	9	9
Rashunda Jones	7	7
Sophie Swanson	1	1
Scored 20+ Points	23-24	Career
Abbey Ellis	3	24*
Caitlyn Harper	1	21*
Jeanae Terry		3*
Madison Layden	1	3
Rashunda Jones	3	3
Made 1 3-Pointer	23-24	Career
Abbey Ellis	17	87*
Madison Layden	14	76
Caitlyn Harper	11	33*
Jeanae Terry	2	26*
Jayla Smith	3	24
Sophie Swanson	7	7
Rashunda Jones	6	6
McKenna Layden	4	4
Emily Monson	3	3
McKenna Layden	1	1
Mary Ashley Stevenson	1	1
Mila Reynolds	1	1
Made 2+ 3-Pointers	23-24	Career
Madison Layden	11	54
Abbey Ellis	5	46*
Caitlyn Harper	3	24*
Jayla Smith		8
Jeanae Terry		7*
Rashunda Jones	2	2
Sophie Swanson	2	2
McKenna Layden	1	1
Recorded 10+ Rebounds	23-24	Career
Jeanae Terry	5	26*
Caitlyn Harper	1	11*
Abbey Ellis		2*
Mary Ashley Stevenson	2	2
Recorded 5+ Assists	23-24	Career
Jeanae Terry	10	67*
Madison Layden	1	15
Abbey Ellis	2	15*
Recorded 3+ Steals	23-24	Career
Jeanae Terry	4	28*
Abbey Ellis	5	23*
Madison Layden	3	22
Caitlyn Harper	1	8*
Jayla Smith		4
Recorded 3+ Blocks	23-24	Career
Caitlyn Harper		15*
Jayla Smith		1
Jeanae Terry		1*
Played a Complete Game	23-24	Career
Madison Layden		2
Caitlyn Harper		1*

BOILER NOTES**THE VOICE OF THE BOILERMAKERS**

- In his 34th season calling Purdue women's basketball, play-by-play man Tim Newton is closing in on his 1,000th game with Purdue women's basketball.
- He has called 1,004 games in his time with the Boilermakers.
- Purdue is 683-321 in games called by Newton. He has been on the air for 1,004 of Purdue's 1,476 total games.
- Newton has provided the call for all seven Big Ten regular season titles, all nine Big Ten Tournament Championships, three Final Fours and 25 of 27 NCAA Tournament appearances.
- Perhaps Newton's best call came in the final seconds of the 1999 National Championship as Purdue became the only Big Ten team to capture the national title.
- "Ladies and gentlemen, the national champion team resides in West Lafayette, Indiana, as Katie Douglas throws the ball skyward. It's over. Purdue wins 62-45, capturing the national championship."
- His first game was on WBAA (920 AM) on Jan. 3, 1991 when No. 3 Purdue downed Ohio State at Mackey Arena 105-45.
- Based on the best research available, Newton and LSU's play-by-play voice Patrick Wright are the only active radio voices to reach 1,000 games called.

A WEEKEND FOR THE CHAMPS

- Purdue welcomed home its legendary 1998-99 team this weekend to celebrate the 25-year anniversary of the Big Ten's only national championship in women's basketball over the weekend of Nov. 10-12.
- The championship squad was honored in front of a sold-out Mackey Arena for the men's basketball game on Friday, before an on-field ceremony at the football game on Saturday. The weekend culminated with a halftime ceremony at the women's game in front of 5,002 fans on Sunday.
- Head coach Katie Gearlds unveiled a new trophy display for the Sears Trophy at the front of Mackey Arena, complete with photos and quotes of players from that magical year.
- A major piece from the celebration involved a Boilermaker who was gone too soon. Tiffany Young, a charismatic junior guard passed away four months after winning the title in a car accident. Throughout the 2023-24 season, Purdue will reopen the Tiffany Young Scholarship Endowment to provide a women's basketball student-athlete a scholarship in her name.

THE BIG TEN'S ONLY NATIONAL CHAMPIONS

- Led by National Coach of the Year Carolyn Peck, the Boilermakers finished the year with a program-best 34-1 record, a perfect 16-0 mark in Big Ten play, a Big Ten Tournament title and a 62-45 win in the National Championship Game over Duke.
- The 1998-99 season opened when Purdue knocked off three-time defending national champion and No. 1-ranked Tennessee at Mackey Arena 78-68.
- Stephanie White was named an All-American, the Honda Award winner and the Wade Trophy honoree, as well as the Big Ten Player and Athlete of the Year. Ukari Figgs earned an honorable mention All-America nod and was named the 1999 Most Outstanding Player of the NCAA Tournament.
- The victory was bittersweet as guard Tiffany Young tragically died when she was killed by a drunk driver just over four months after winning the national championship. The 1998-99 team have continued to bring back their memories and love for Young over the last 25 years to ensure her impact on their lives will never be forgotten.

MACKEY IS ONE OF A KIND

- The Gold and Black Sound (G.A.B.S.) is overwhelmingly the best pep band in the Big Ten with constant, never-ending energy.
- In the final minute of halftime, Purdue plays "Sandstorm" by Darude. Fans join G.A.B.S. in a special dance. If you want to partake the steps are - two right punches across your body high, two high with your left, two right punches across your body low, two low with your left, repeat with one punch, clap, shimmy, "Woo!!"
- New this season and prior to every home game, Purdue displays a video call "ALL-IN". The video features several Boilermaker legends detailing the heights of the program.

SELLING OUT MACKEY

- For the third time in program history and the first since 2000, Mackey Arena sold out for a women's basketball game when the Boilermakers faced No. 4 Indiana last season.
- The crowd of 14,876 set a new record for the program and was the then-16th highest-attended game in Big Ten history.
- Following an Indiana-record 17,222 fans when Purdue and Indiana played on Feb. 19, the grand total of fans who watched the best rivalry in college basketball came to a record 32,098.
- The attendance, at the time, was the second largest on campus nation this season behind Missouri at South Carolina (15,444) and Florida at Oklahoma (19,236).
- Purdue was the fifth Big Ten team to go over 10,000 in attendance this season (Michigan, Maryland, Iowa, Indiana).
- In the regular season, Purdue played in the third and ninth most attended games in the nation last year.

BACK IN THE BIG DANCE

- The Boilermakers made their return to the NCAA Tournament for the 27th time in program history in 2022-23.
- Led by Carolyn Peck, the Boilermakers won the 1999 national title, the only women's basketball championship earned by a Big Ten program.
- In addition to the championship, Purdue has reached two title games (2001 loss to Notre Dame), three Final Fours, eight Elite Eights and 12 Sweet 16s.
- Six Boilermakers have been named to the Final Four All-Tournament Team, including 1999 M.O.P. Ukari Figgs.
- Eighteen players have garnered NCAA Regional All-Tournament Team honors, with Katie Gearlds garnering the laurel in 2007.
- Purdue has a 47-26 all-time record in March Madness.

A WINNING HISTORY

- Putting on the Old Gold & Black carries with it a standard that was set more than three decades ago when the Boilermakers lifted their first Big Ten title in 1991.
- Purdue is the only Big Ten team to win a national championship in women's basketball.
- Reaching the NCAA Tournament for the first time since 2016-17 last season with a bid to the First Four, the Boilermakers' 27 NCAA Tournament appearances are tied with Ohio State for second in the Big Ten behind Iowa's 29.
- With its last Big Ten Tournament title coming in 2013, Purdue owns the record for most league tourney championships with nine (1998-99-2000-03-04-07-08-12-13)
- Purdue has won seven Big Ten regular season championships, good for fourth in the league, with the last one coming in 2002.

SOMETHING ABOUT A TRUCK

- A heartfelt story told by the Big Ten Network during the 2022-23 season centered around Gearlds' relationship with her parents.
- As a freshman at Beech Grove High School, Gearlds made a deal with her parents that if she was named Indiana Miss Basketball, they would buy her the car of her dreams.
- Four years and an incredible high school career later, her father Tony traded in his truck to surprise Katie with a 2002 yellow Ford Mustang in the family garage. Tony took over Katie's 1988 Chevy Celebrity, driving it until the wheels fell off.
- In the summer of 2022, Katie returned the favor and surprised her dad to buy him any brand new he wanted. The only rule, it could not be red.

PROBOILERS

- Purdue has four players currently playing pro ball in Europe.
- Aya Traore, a teammate of Gearlds' during her playing time in West Lafayette, plays for Lleida in the Spanish LF2 Division.
- Ae'Rianna Harris - Picken Claret in the Spanish LF2 Division.
- Andreona Keys - Arad in the Romanian Liga Nationala.
- Lasha Petree - Vimpelin Veto in the Finnish Korisliiga.

SISTER SISTER**Madison Layden** - Feb. 7, 2002**McKenna Layden** - Jan. 11, 2005**Age Gap** - 1,069 days or 2 years, 11 months, 4 days**Parents** - Kathie & Jeff Layden**Hometown** - Kokomo, Ind.

- Madison and McKenna Layden are back together for the first time since Madison's senior year of high school in 2020, when the duo guided Northwestern to the 4A IHSA State Championship game.
- Their mother Kathie was the head coach of the basketball team assisted by their father Jeff. The Laydens won back-to-back state titles in 2018 and 2019.
- The tandem played basketball, volleyball and tennis together throughout their high school careers.
- Kathie won five Indiana State championships as a head coach, the most by a non-private school head coach, during her career that she retired from in 2023 after 23 seasons.
- Madison claimed a trio of sectional titles and back-to-back 3A state titles, before McKenna joined the high school ranks.
- McKenna owns the Northwestern High School record for points in a game with 47 off nine 3-pointers during her senior year.
- The Laydens were honored in a Hamburger Helper commercial when McKenna and Madison were children.
- Madison got engaged during the holiday break this year.

**Mila Reynolds** - July 1, 2003**Amiyah Reynolds** - June 25, 2004**Age Gap** - 360 days or 11 months, 24 days**Parents** - Steve & Marcy Reynolds**Hometown** - South Bend, Ind.

- After an impressive three years together at South Bend Washington, Mila and Amiyah Reynolds are reunited on the same roster after a year hiatus.
- Combined, the duo won the 2022 Class 3A State Championship and posted a 68-17 record together over three years.
- Mila finished her career with a 78-30 mark and amassed 2,099 career points, second in program history to Skylar Diggins-Smith.
- Amiyah was the No. 43 player in the nation and the second highest Big Ten signee in the class of 2023, per ESPN. She finished her career ranked second in assists with 564 and in the top 10 in points. Reynolds' senior season came to an abrupt ending due to an foot/ankle injury that will rule her out of the 2023-24 season.
- The unofficial third sister of the group is fellow South Bend Washington Panther Rashunda Jones who created an unstoppable backcourt with Amiyah. The duo went 95-18 over their four years on the court.
- Rashunda finished as the runner up for the 2023 Indiana Miss Basketball.
- Their father Steve was the head coach of South Bend Washington assisted by their mother Marcy, both of whom played professionally overseas.
- Mila and Amiyah are two of the seven Reynolds children.
- The Reynolds and Rashunda Jones have played together since grade school after attending church together as children.

**Caitlyn Harper** - Feb. 12, 2000**Alaina Harper** - Dec. 4, 2003**Age Gap** - 1,391 days or 3 years, 9 months, 22 days**Parents** - Dale & Rhonda Harper**Hometown** - Heartland, Wis.

- Due to the long age gap, Caitlyn and Alaina Harper will play on the same team for the first time in their lives.
- After Caitlyn had a standout career at Arrowhead High School, Alaina followed suit wearing the same No. 34 her sister wore.
- Prior to transferring to Purdue ahead of the 2022-23 season, Caitlyn was an all-conference player at Arrowhead before earning WAC Player of the Year honors at Cal Baptist.
- Alaina spent her freshman campaign at Grand Canyon following an all-conference career at Arrowhead.
- Their father Dale played collegiately at Bemidji State.
- Strong academics have always played a major role in their lives. Caitlyn was a 2022 CoSIDA All-American and earned a 3.9 GPA at Arrowhead. Alaina bettered that with a perfect 4.0 GPA in high school.

PURDUE IN THE POLLS

Week	AP	Coaches	NET
Preseason	-	-	-
Week 1	-	-	-
Week 2	-	-	-
Week 3	-	-	-
Week 4	-	-	-
Week 5	-	-	87
Week 6	-	-	84
Week 7	-	-	84
Week 8	-	-	84
Week 9	-	-	75
Week 10	-	-	77
Week 11	-	-	79
Week 12	-	-	80
Week 13	-	-	-
Week 14	-	-	-
Week 15	-	-	-
Week 16	-	-	-
Week 17	-	-	-
Week 18	-	-	-
FINAL	-	-	-

SINGLE-GAME RECORDS**SINGLE-GAME POINTS**

Overall	41	Katie Gearlds	at Wisconsin	2/18/07
Senior	41	Katie Gearlds	at Wisconsin	2/18/07
Junior	37	MaChelle Joseph	at Michigan State	2/15/91
Sophomore	40	Shereka Wright	at Michigan	2/17/02
Freshman	34	Leslie Johnson	at Vanderbilt	12/5/93

SINGLE-GAME FIELD GOALS

Overall	16	MaChelle Joseph	at Michigan State	2/15/91
Senior	14	Jannon Roland	at Ohio state	1/23/97
Junior	16	MaChelle Joseph	at Michigan State	2/15/91
Sophomore	15	Shereka Wright	at Michigan	2/17/02
Freshman	13	Leslie Johnson	Northwestern	2/27/94

SINGLE-GAME 3-POINTERS

Overall	12	Brittany Rayburn	at Minnesota	1/12/12
Senior	12	Brittany Rayburn	at Minnesota	1/12/12
Junior	7	Karissa McLaughlin	at Michigan State	1/30/20
Sophomore	9	2x, K. McLaughlin	Northwestern	2/17/19
Freshman	6	5x, Madison Layden	at Iowa	1/18/21

SINGLE-GAME FREE THROWS MADE

Overall	16	Shereka Wright	Penn State	1/16/03
Senior	13	2x, Shereka Wright	at Northwestern	2/15/04
Junior	16	Shereka Wright	Penn State	1/16/03
Sophomore	14	3x, Courtney Moses	at Northwestern	1/26/12
Freshman	14	Leslie Johnson	Ohio State	2/13/94

SINGLE-GAME REBOUNDING

Overall	25	Leslie Schultz	at Miami (OH)	12/2/81
Senior	20	Joy Holmes	at Wisconsin	1/27/91
Junior	25	Leslie Schultz	at Miami (OH)	12/2/81
Sophomore	20	Cathery Tyree	at Michigan State	1/11/85
Freshman	23	Natasha Cender	Michigan	2/7/76
Offensive	12	Joy Holmes	Minnesota	2/10/91
Defensive	16	2x, Whitney Bays	at Dayton	12/7/14

SINGLE-GAME ASSISTS

Overall	16	MaChelle Joseph	Northern Illinois	3/22/92
Senior	16	MaChelle Joseph	Northern Illinois	3/22/92
Junior	14	Lisa Jahner	Michigan	3/7/87
Sophomore	12	MaChelle Joseph	New Mexico State	12/29/89
Freshman	11	3x, K. McLaughlin	Penn State	1/28/18

SINGLE-GAME BLOCKS

Overall	11	Danielle Campbell	Butler	11/17/07
Senior	9	Ae/Rianna Harris	at #5 South Carolina	12/15/19
Junior	11	Danielle Campbell	Butler	11/17/07
Sophomore	7	3x, Ae/Rianna Harris	Lamar	11/18/17
Freshman	7	2x, Nora Kiesler	at Penn State	1/30/16

SINGLE-GAME STEALS

Overall	12	Joy Holmes	Minnesota	1/13/89
Senior	9	Michelle Duhart	Michigan State	2/24/00
Junior	10	Cherelle George	South Carolina	11/26/05
Sophomore	12	Joy Holmes	Minnesota	1/13/89
Freshman	8	FahKara Malone	Illinois	2/8/07

2023-24 PURDUE WOMEN'S BASKETBALL GAME NOTES

WINNING MARGINS

When Leading

Largest Margin of Victory	39, vs. Wisconsin, 12/30/23
Largest Overall Lead	45, vs. Wisconsin, 12/30/23
Largest Halftime Lead	24, vs. Wisconsin, 12/30/23
Largest Lead in a Loss	9, vs. Indiana, 1/21/24
Largest Halftime Lead in a Loss	
Largest Purdue Run	18, vs. SEMO, 12/6/23

When Trailing

Largest Margin of Defeat	43, at UCLA, 11/6/23
Largest Overall Deficit	45, at UCLA, 11/6/23
Largest Halftime Deficit	28, at UCLA, 11/6/23
Largest Deficit Overcome to Win	8, vs. Texas A&M, 11/16/23
Largest Halftime Deficit in a Win	
Largest Opponent Run	10, at UCLA, 11/6/23

Games When the Margin is	Win	Loss
1 Point	1	
2 Points		1
3 Points		1
4 Points		
5 Points		
6 Points		1
7 Points		
8 Points	1	1
9 Points		
10-19 Points	3	1
20-29 Points	2	2
30+ Points	2	2

RANDOM ODDS AND ENDS

Name	Consecutive Made Free Throws	Straight Games with a Three	Consecutive Starts
1 - Reynolds	-	-	-
2 - Jones	1	2	-
3 - Smith	1	-	-
10 - Terry	3	-	114*
11 - Layden	3	-	-
15 - Reynolds	5	-	-
20 - Stevenson	4	-	17
21 - Monson	-	-	-
23 - Ellis	2	7	33
31 - Swanson	-	-	-
32 - Harper	-	-	-
33 - Layden	-	1	18
34 - Harper	4	1	22

Opening Tips	Won-Lost	Record in Games
Jayla Smith	0-1	0-1
Mary Ashley Stevenson	7-10	9-8

Scoring First	2	3	FT	Record in Games
Abbey Ellis	7			4-3
Caitlyn Harper	1			0-1
Madison Layden	1	1		2-0
Mary Ashley Stevenson	5	1	1	2-5
Jeanae Terry			1	1-0

RECORDS WATCH

• Check out which Boilermakers are climbing the single-season and career charts this year.

CAREER ASSISTS AT PURDUE

1. MaChelle Joseph	628	1989-92
2. Stephanie White	578	1996-99
3. Katie Douglas	526	1998-01
4. Lisa Jahner	517	1985-88
5. April Wilson	515	2013-16
6. FahKara Malone	513	2007-10
7. Erika Valek	479	2001-04
8. Jeanae Terry	475	2022-Present

CAREER ASSIST TO TURNOVER RATIO AT PURDUE (MIN. 200 ASTS)

1. Jeanae Terry	1.92	2022-Present
2. April Wilson	1.68	2013-16
3. Jennifer Jacoby	1.64	1992-95
Katie Gearlds	1.64	2004-07
5. Karissa McLaughlin	1.54	2018-2021
6. Lisa Jahner	1.46	1985-88
7. Madison Layden	1.43	2021-Present
8. Cindy Lamping	1.40	1992-95
9. Dominique Oden	1.38	2017-20
10. Ukari Figgs	1.37	1996-99

CAREER FREE THROW PERCENTAGE AT PURDUE (MIN. 175 ATT)

1. Courtney Moses	90.6 - 290-320	2011-14
2. Abbey Ellis	87.5 - 210-240	2022-Present
3. Karissa McLaughlin	86.7 - 176-203	2017-21
4. Katie Gearlds	86.3 - 314-364	2004-07
5. Ukari Figgs	84.1 - 359-427	1996-99
6. Brittany Rayburn	82.1 - 538-665	2009-12
Drey Mingo	82.1 - 183-223	2010-13

CAREER TRIPLE-DOUBLES

1. Jeanae Terry	2	2022-Present
-----------------	---	--------------

CAREER NON-POINT DOUBLE-DOUBLES

1. Jeanae Terry	4	2022-Present
-----------------	---	--------------

CAREER 3-POINTERS

1. Karissa McLaughlin	244	2018-21
2. Courtney Moses	240	2011-14
3. Katie Gearlds	238	2004-07
4. Cassidy Hardin	214	2019-23
5. Brittany Rayburn	201	2009-12
6. Dominique Oden	193	2017-20
7. Jodi Howell	188	2006-10
8. Stephanie White	183	1996-99
Madison Layden	183	2021-Present

SINGLE-SEASON 3-POINT PERCENTAGE

1. Drey Mingo	48.2 - 59-125	2008-09
2. Madison Layden	48.2 - 41-85	2023-24
3. Jodi Howell	47.2 - 59-125	2003-04
4. Katie Gearlds	44.7 - 80-179	2013-14
5. Courtney Moses	44.0 - 48-109	1995-96
6. Stephanie White	43.7 - 62-142	1998-99
7. Beth Jones	43.3 - 52-120	2003-04
8. Jannon Roland	42.7 - 32-75	1993-94
9. Jennifer Jacoby	41.5 - 54-130	1994-95
10. Kelly Komara	41.3 - 26-63	1998-99

CAREER 3-POINT PERCENTAGE

1. Nicole Erickson	41.9 - 85-203	1995-96
2. Jodi Howell	41.3 - 188-455	2006-10
3. Beth Jones	40.1 - 154-384	2001-04
4. Courtney Moses	39.7 - 240-605	2011-14
5. Drey Mingo	39.5 - 45-114	2010-13
6. Jennifer Jacoby	38.3 - 157-410	1992-95
Erika Valek	38.3 - 114-298	2001-04
8. Katie Gearlds	37.9 - 238-628	2004-07
9. Melina Griffin	37.0 - 40-108	1993-96
10. Stephanie White	36.5 - 183-501	1996-99
11. Jannon Roland	36.4 - 133-365	1994-97
12. Madison Layden	35.9 - 183-510	2020-Present
13. Erin Lawless	35.6 - 47-132	2004-07
14. Karissa McLaughlin	35.5 - 234-653	2018-21
15. Dominique Oden	35.0 - 172-482	2017-20
16. Bridget Perry	34.5 - 48-139	2014-17

HONORS AT PURDUE

Abbey Ellis

Team Captain for first season - 2023-24
All-Big Ten Honorable Mention - 2021-22, 2022-23

Caitlyn Harper

Team Captain for first time - 2023-24

Rashunda Jones

Big Ten Freshman of the Week - Nov. 20

Madison Layden

Team Captain for third season - 2021-2024

Mary Ashley Stevenson

Big Ten Freshman of the Week - Jan. 2

Jeanae Terry

Team Captain for third season - 2021-2024
Second Team All-Big Ten - 2022-23
Big Ten All-Defensive Team - 2022-23



2023-24 ROSTER

No.	Name	Yr.	Pos.	Ht.	Hometown/High School/Previous School
1	Amiyah Reynolds	Fr.	G	6-0	South Bend, Ind. / South Bend Washington
2	Rashunda Jones	Fr.	G	5-8	South Bend, Ind. / South Bend Washington
3	Jayla Smith	Jr.	G	6-0	Indianapolis, Ind. / Lawrence North
10	Jeanae Terry	5th	G	5-11	Detroit, Mich. / Wayne Memorial / Illinois
11	McKenna Layden	Fr.	G	6-2	Kokomo, Ind. / Northwestern
15	Mila Reynolds	So.	F	6-3	South Bend, Ind. / South Bend Washington / Maryland
20	Mary Ashley Stevenson	Fr.	F	6-2	New York City, N.Y. / The Dalton School
21	Emily Monson	Fr.	G	6-1	Murfreesboro, Tenn. / Blackman
23	Abbey Ellis	5th	G	5-6	Melbourne, Australia / Our Lady of Mercy / Cal Poly
31	Sophie Swanson	Fr.	G	5-10	Barrington, Ill / Barrington Prep
32	Alaina Harper	So.	F	6-3	Hartland, Wis. / Arrowhead / Grand Canyon
33	Madison Layden	Sr.	G	6-1	Kokomo, Ind. / Northwestern
34	Caitlyn Harper	6th	F	6-3	Hartland, Wis. / Arrowhead / Cal Baptist

Name	Position	Year at Purdue	Year Coaching	Alma Mater
Katie Gearlds	Head Coach	3rd Year	11th Year	Purdue - '07
Kelly Komara	Associate Head Coach	1st Year / 3rd Year*	20th Year	Purdue - '02
Mark Stephens	Assistant Coach / Recruiting	1st Year	7th Year	Morehead State - '02
Alex Guyton	Assistant Coach	5th Year	7th Year	Purdue - '12
Tiffini Grimes	Deputy Athletic Director / SWA	2nd Year		Purdue - '05
Amie Anthrop	Director of Operations	1st Year		Southern Indiana - '11
Chaz Calloway	Director of Strength & Conditioning	1st Year		Cincinnati - '14
Jessica Lipsett	Director Athletic Training and Physical Therapy	21st Year		Illinois - '00
Lakan Hasser-Smith	Director Video/Recruiting Assistant	2nd Year		Marian - '16
Abby Downard	Graduate Assistant	1st Year		Marian - '21

*Served on staff from 2014-16

Amiyah Reynolds	ah-MY-yah	Alaina Harper	ah-LAY-na
Rashunda Jones	ra-SHUN-da	Katie Gearlds	soft g (like the first name)
Mila Reynolds	MEE-la	Kelly Komara	kom-AIR-ah

Associate Head Coach Kelly Komara

Alma Mater: Purdue '02 | **Season at Purdue/Career:** 1st/3rd/20th
Select Experience: Marquette - Assistant (22-23), Vanderbilt - Associate Head Coach (19-21), Vanderbilt - Assistant (17-18), Purdue - Assistant (15-16)

Select Highlights: 1999 National Champion, 2002 Big Ten Defensive Player of the Year, 3-time All-Big Ten selection, 4 NCAA Tournaments, 2 National Championship Games, 5 Big Ten titles, father has been an Indiana high school football coach for over 50 years

Assistant Coach Mark Stephens

Alma Mater: Morehead State '02 | **Season at Purdue/Career:** 1st/7th
Select Experience: Toledo - Assistant (20-23), Xavier - Assistant (17-19), Crispus Attucks - Head Coach (2012-16), Indiana Elite - Club Director

Select Highlights: Helped Toledo to three MAC titles and an NCAA Appearance, mentored numerous Indiana Miss Basketball winners during his AAU coaching career

Assistant Coach Alex Guyton

Alma Mater: Purdue '12 | **Season at Purdue/Career:** 5th/7th
Select Experience: Purdue - Director of Player Development (19-21), Eastern Illinois - Assistant (17-19), Carmel HS - Assistant (14-17)

Select Highlights: Played 124 games won a pair of Big Ten Tournament titles, 3 NCAA Tournaments and an Elite Eight, coached Michigan's Amy Dilk while at Carmel


1 AMIYAH REYNOLDS

2 RASHUNDA JONES

3 JAYLA SMITH

10 JEANAE TERRY

11 MCKENNA LAYDEN

15 MILA REYNOLDS

20 MARY ASHLEY STEVENSON

21 EMILY MONSON

23 ABBEY ELLIS

31 SOPHIE SWANSON

32 ALAINA HARPER

33 MADISON LAYDEN

34 CAITLYN HARPER

KATIE GEARLDS

KELLY KOMARA

MARK STEPHENS

ALEX GUYTON



KATIE GEARLDS

HEAD COACH | 3RD SEASON AT PURDUE | 11TH SEASON OVERALL | PURDUE '07

@katiegearlds4
@katiegearlds4

Year	Overall	BIG	Non-Con.	BIG Tourney	NCAAs	WNIT	Home	Road	Neutral	vs. Top-25	Unranked
2021-22	17-15	7-11	9-2	0-1	-	1-1	11-6	5-7	1-2	1-6	16-9
2022-23	19-11	9-8	9-1	1-1	0-1	-	10-4	6-4	3-2	2-6	17-5
2023-24	9-9	2-5	7-4	-	-	-	8-2	1-5	0-2	0-4	9-5
Totals	45-35	18-24	25-7	1-2	0-1	1-1	29-12	12-16	4-7	3-16	42-19
Pct.	.563	.429	.781	.333	.000	.500	.77	.429	.364	.158	.689

AN IMPACT BACK IN WEST LAFAYETTE

- In two seasons back at her alma mater, Katie Gearlds has guided the Boilermakers back to the postseason twice.
- After posting a 19-win campaign in 2022-23, Gearlds joined the elite company of Carolyn Peck and Lin Dunn as the only Boilermaker head coaches to post win improvements in each of their first two campaigns.
- The Boilermakers made their return to the NCAA Tournament for the first time since 2017 with a bid to the First Four last year.
- Prior to her arrival, Purdue had dropped its last 19 games against a ranked opponent. In two seasons, Gearlds has racked up three, including the program's first AP top-5 win in a true road game against No. 2 Ohio State in 2022-23.
- Katie Gearlds reached the 250-win plateau for her career against Harvard, reaching the feat in 315 career games.

HITTING THE RECRUITING TRAIL

- The 2023-24 freshmen made up Gearlds' first true recruiting class through an entire cycle.
- Landing five signees in November of 2022, the 2023 class ranked No. 21 in the nation, before Gearlds welcomed in top-50 player Amiyah Reynolds to the program the following May.
- A former Indiana Miss Basketball, Gearlds has placed a major emphasis on recruiting and ensuring the best talent in the state comes to Purdue.
- Gearlds has also found success in the transfer portal with Jeanae Terry and Abbey Ellis garnering All-Big Ten nods, while Lasha Petree and Caitlyn Harper powered the offense in 2022-23.

THE JOB SO FAR

- Gearlds guided the Boilermakers on another step forward in 2022-23, making the NCAA Tournament for the first time since 2017.
- After having a full offseason to prepare, the Boilermakers went 19-11 and tallied a pair of ranked wins over No. 22 Illinois and No. 2 Ohio State.
- The Katie Gearlds era started sooner than expected in 2021-22, when she took over the program a mere 47 days prior to the season opener.
- Purdue finished 17-15 on the year, winning 10 more games than the previous campaign. It was the best win improvement by first-year head coach at Purdue and the third best in program history.
- The Boilermakers finished 10-2 in the non-conference, marking the second-best clip by a first-year head coach.
- The Boilermakers reached the postseason for the first time since 2017-18, ending the campaign in the second round of the WNIT.

COACHING EXPERIENCE

- Spent eight seasons taking Marian University winning back-to-back NAIA National Championships in 2016 and 2017.
- Went 228-50 record, an 82% clip with the Knights.
- Three-time NAIA National Coach of the Year, won 10 total Crossroads League titles and made seven appearances in the NAIA Tournament.
- Guided 12 WBCA NAIA All-America selections, compared to just five in the first 37 years of the program's existence.

PROFESSIONAL CAREER

- Played professionally over six seasons
- Spent three seasons in the WNBA with the Seattle Storm,
- Was taken with the seventh overall pick in the 2007 WNBA Draft, the highest selection ever from Purdue
- Two of her closest teammates and friends over the years are WNBA legend Sue Bird and fellow WNBA great and New Orleans Pelicans Vice President of Basketball Operations Swin Cash.
- Gearlds is the highest draft pick in Purdue history, going seventh overall to the Seattle Storm in 2007.

ALL-AMERICAN AT PURDUE CAREER

- Was a three-year starter from 2004-07.
- Ranks fourth in program history with 1,974 points and was the ninth fastest to join the 1,000-point club.
- Named a Legend of Mackey Arena for the 50th season.
- Won two Big Ten Tournament titles and never missed the NCAA Tournament with Gearlds in the squad
- Reached three Sweet 16s and one Elite Eight.
- Set the Purdue single-game record with 41 points at Wisconsin on Feb. 18, 2007, and scored 707 points to tie the single-season program record.
- 2007 Third Team AP All-America WBCA Honorable Mention
- Four-time All-Big Ten and the 2004 Big Ten Freshman of the Year.
- Earned a bachelor's degree in sociology and minored in psychology and communications from Purdue in 2007.

ONE-OF-A-KIND PREP CAREER

- Named the Indiana Miss Basketball in 2003.
- Amassed 2,521 career points, good for sixth in IHSAA history.
- Averaged 30.1 points, 9.4 rebounds, 5.4 assists and 5.1 steals per game to lead Beach Grove High School to the 2003 Class 3A State Championship.
- Nike/WBCA All-America, First Team All-State and the Gatorade Indiana Player of the Year.
- A McDonald's All-American, was named the MVP of the McDonald's All-America Game the same season as a young talent from Akron, Ohio - LeBron James.

INSPIRED BY GREATNESS

- Gearlds has a deep bench of basketball legends who have touched and continue to influence her career.
- One of the few people who can say they've worked with two G.O.A.T.s, Gearlds was the MVP of the 2003 McDonald's All-America Game with LeBron James.
- Sue Bird, her teammate with the Storm and a mentor over the last 15 years, inspired Gearlds to go into coaching.
- She also shared the court in Seattle with Swin Cash (V.P. New Orleans Pelicans), Adia Barnes (Arizona head coach) and Lauren Jackson (owner Melbourne Boomers).
- She competed against Chris Paul in the skills challenge ahead of the 2003 McDonald's All-America Game.

AN INDIANA LEGEND

- One of the best products of Indiana basketball, Gearlds claimed a state title, a Big Ten championship and a national title with programs from the Crossroads State.
- Named Indiana Miss Basketball as a senior at Beech Grove in 2003, Gearlds guided the Hornets to a 3A state championship, setting a state record across all classes with 33 points in the final. Today, she ranks 11th in state history with 2,521 career points.
- As a Boilermaker from 2003-07, Gearlds reached the NCAA Tournament four times, won two Big Ten Tournament titles, sits fourth in Purdue history with 1,974 career points and holds the record for points in a season with 707 with Stephanie White.
- Following a six-year professional career, Gearlds took over the reins at Marian in Indianapolis, posting a 227-49 record over eight years, winning three NAIA Coach of the Year honors and claiming two national championships.

GEARLDS' YEAR-BY-YEAR					
Year	School	Overall	Conf.	Post.	Rank
2013-14	Marian	16-16	8-10	-	-
2014-15	Marian	28-6	14-4	NAIA R32	-
2015-16	Marian	32-6	16-2	NAIA Champ	No. 1
2016-17	Marian	35-3	17-1	NAIA Champ	No. 1
2017-18	Marian	32-3	17-1	NAIA R16	No. 8
2018-19	Marian	27-7	16-2	NAIA R32	No. 17
2019-20	Marian	31-3	16-2	NAIA R16	No. 13
2020-21	Marian	27-6	16-0	NAIA R32	No. 9
2021-22	Purdue	17-15	7-11	WNIT 2nd Rd	-
2022-23	Purdue	19-11	9-8	NCAA First Four	-
2023-24	Purdue	9-9	2-5	-	-
11th Year		273-85	18-24	-	-

GEARLDS' TIMELINE	
2021-Present	Head Coach, Purdue
2013-21	Head Coach, Marian
2013	Toyota Huelva, Spain
2011-12	Orion Ibaizabal Galdakao, Portugal
2010	FEA Neas Halkindonas, Greece
2008	Kosit Kosice, Slovakia
2007-09	Seattle Storm, WNBA
2003-07	All-America Guard, Purdue
1999-03	All-America Guard, Beech Grove High School

POWER 5 COACHES UNDER 40			
Age	Name	School	Birthdate
36	Jacie Hoyt	Oklahoma State	4/2/1987
38	Kelly Rae Finley	Florida	4/27/1985
39	Katie Gearlds	Purdue	10/26/1984
39	Carolyn Kieger	Penn State	8/17/1983

GEARLDS IN THE PURDUE RECORD BOOK			
Stat	Rank	Total	Year/Game
Single Game Points	1	41	Wisconsin, 2/18/07
Season Points	T1	707	2006-07
Career Points	4	1,974	2004-07
Career Average	4	14.8	2004-07
Season 10+ Point Games	3	33	2006-07
Career 10+ Point Games	4	102	2004-07
Season 30+ Point Games	2	4	2006-07
Career 30+ Point Games	2	6	2004-07
Season Field Goals	2	250	2006-07
Career Field Goals	3	711	2004-07
Season 3-Pointers	T1	88	2006-07
Career 3-Pointers	3	238	2004-07
Season Asst/TO	1	2.57	2005-06
Career Asst/TO	T2	1.64	2004-07
Season Minutes	1	1,359	2006-07
Career Minutes	2	4,475	2004-07

KG ERA BESTS**MOST POINTS SCORED**

1.	101	vs. Denver	12/12/21
2.	100	vs. SIUE	11/17/22
3.	95	vs. Southern Indiana	11/26/23
4.	90	vs. Murray St.	11/13/22
5.	89	vs. Illinois	1/20/22
	89	vs. Wisconsin	12/30/23

MOST POINTS ALLOWED

1.	96	vs. Iowa	1/10/24
		at UCLA	11/6/23
3.	86	vs. Maryland	12/08/21
	83	vs. Indiana	02/19/23
5.	83	vs. Iowa	12/29/22

FEWEST POINTS ALLOWED

1.	50	vs. Southern	11/12/23
	50	vs. Wisconsin	12/23/30
3.	51	vs. Illinois State	12/11/22
4.	52	vs. Florida	11/20/23
	52	at Illinois	1/26/23
	52	vs. Georgia Tech	12/1/21

LARGEST MARGIN OF VICTORY

1.	42	vs. SIUE	11/17/22
2.	39	vs. Wisconsin	12/30/23
3.	38	vs. Southern Indiana	11/26/23
4.	33	vs. North Ala.	12/21/21
	33	vs. Denver	12/12/21

MOST FIELD GOALS MADE

1.	38	vs. Denver	12/12/21
	38	vs. Southern Indiana	11/26/23
3.	37	vs. North Ala.	12/21/21
4.	35	2x last vs. Wisconsin	12/30/23

HIGHEST FIELD GOAL PERCENTAGE

1.	.633	vs. Denver	12/12/21
2.	.607	vs. Harvard	11/24/22
3.	.576	vs. Southern Indiana	11/26/23
4.	.569	vs. Southern Ill.	3/16/22
5.	.565	vs. SIUE	11/17/22

LOWEST FIELD GOAL PERCENTAGE ALLOWED

1.	.275	vs. Minnesota	1/21/23
2.	.281	vs. Southern	11/12/23
3.	.293	vs. Illinois St.	12/11/22
4.	.317	vs. Indiana St.	11/20/22
5.	.318	vs. North Ala.	12/21/21

MOST 3-POINTERS MADE

1.	15	vs. Illinois	1/20/22
2.	13	vs. Ohio St.	1/29/23
	13	vs. Denver	12/12/21
4.	12	vs. Florida St.	11/25/22
	12	vs. Maryland	12/8/21
	12	vs. Florida St.	11/27/21

HIGHEST 3-POINT PERCENTAGE

1.	.652	vs. Illinois	1/20/22
2.	.600	vs. St. John's (NY)	3/16/23
3.	.500	vs. Denver	12/12/21
	.500	vs. Indiana State	12/20/23
5.	.474	3x last vs. S. Indiana	11/26/23

FEWEST 3-POINTERS ALLOWED

1.	0	vs. Rutgers	1/2/22
	0	vs. Iowa	1/13/22
3.	1	vs. Marshall	11/22/21
	1	vs. Illinois	2/17/22
5.	2	vs. West Virginia	11/25/21
	2	vs. Michigan St.	1/9/22

LOWEST 3-POINT PERCENTAGE ALLOWED

1.	.000	vs. Rutgers	1/2/22
	.000	vs. Iowa	1/13/22
3.	.059	vs. Marshall	11/22/21
4.	.077	vs. Illinois	2/17/22
5.	.111	vs. Michigan St.	1/9/22

MOST FREE THROWS MADE

1.	26	vs. Northwestern	2/12/23
2.	25	vs. SIUE	11/17/22
3.	22	vs. Western Ky.	11/10/21
4.	21	vs. Marshall	11/22/21
	21	vs. Southern	11/12/23

MOST ASSISTS

1.	26	vs. North Ala.	12/21/21
2.	25	vs. Murray St.	11/13/22
3.	24	vs. Western Mich.	11/14/21
	24	vs. Southern Indiana	11/26/23
5.	23	2x last vs. Wisconsin	12/30/23

FEWEST ASSISTS ALLOWED

1.	5	vs. Southern	11/12/23
	5	vs. Florida	11/20/23
3.	6	vs. Marshall	11/22/21
4.	7	3x last vs. Syracuse	11/30/22

MOST REBOUNDS

1.	50	vs. Michigan St.	12/5/22
2.	47	vs. North Ala.	12/21/21
3.	46	vs. Valparaiso	12/3/23
4.	45	vs. Illinois	2/17/22
5.	44	3x last vs. Wisconsin	12/30/23

MOST DEFENSIVE REBOUNDS

1.	39	vs. Michigan St.	12/5/22
2.	38	vs. Valparaiso	12/3/23
3.	37	vs. Southern	11/12/23
4.	35	vs. Syracuse	11/30/22
5.	34	vs. Southern Ill.	3/16/22
	34	vs. North Ala.	12/21/21

MOST OFFENSIVE REBOUNDS

1.	18	vs. Illinois	2/17/22
	18	vs. Miami (OH)	12/19/21
3.	17	vs. West Virginia	11/25/21
4.	16	vs. Marshall	11/22/21
5.	15	vs. Wisconsin	3/2/23
	15	vs. Nebraska	1/30/22

MOST STEALS

1.	16	vs. Wisconsin	1/1/23
2.	14	vs. SIUE	11/17/22
3.	13	vs. Northwestern	11/14/23
	13	vs. Denver	12/12/21
5.	12	4x last vs. Wisconsin	12/30/23

MOST BLOCKS

1.	9	vs. Iowa	3/3/23
	9	vs. Indiana	2/6/22
3.	8	vs. Northwestern	2/24/22
	8	vs. Illinois St.	11/17/21
5.	7	vs. Rutgers	2/9/23

FEWEST TURNOVERS

1.	7	vs. Murray State	11/13/22
2.	8	vs. Minnesota	1/21/23
	8	at Texas A&M	12/21/22
4.	9	vs. Texas A&M	11/16/23
	9	vs. Minnesota	1/27/22
	9	at Michigan	1/24/22

MOST POINTS SCORED BY A PLAYER

1.	31	Lasha Petree, vs. Syracuse	11/30/22
2.	29	Abbey Ellis, vs. SIUE	11/17/22
3.	27	Brooke Moore, vs. Southern Ill.	3/16/22
4.	26	Abbey Ellis, vs. Ohio St.	1/29/23
	26	Lasha Petree, vs. Minnesota	2/26/23

MOST FIELD GOALS MADE BY A PLAYER

1.	13	Lasha Petree, vs. Syracuse	11/30/22
2.	10	Brooke Moore, vs. Southern Ill.	3/16/22
	10	Lasha Petree, vs. Minnesota	2/26/23
4.	9	9x last Abbey Ellis, vs. Texas A&M	11/16/23

MOST 3-POINTERS MADE BY A PLAYER

1.	7	Cassidy Hardin, vs. Denver	12/12/21
2.	6	Abbey Ellis, vs. Illinois	1/20/22
	6	Cassidy Hardin, vs. Florida St.	11/27/21
	6	Brooke Moore, vs. Maryland	12/8/21
5.	5	6x last Lasha Petree, vs. Indiana	2/19/23

MOST FREE THROWS MADE BY A PLAYER

1.	9	Abbey Ellis, vs. Western Ky.	11/10/21
	9	Jeanae Terry, vs. Miami (OH)	12/10/21
	9	Abbey Ellis, vs. Indiana State	12/20/23
4.	8	Abbey Ellis, vs. SIUE	11/17/22
	8	Caitlyn Harper, vs. Nebraska	1/18/23
	8	Ava Learn, vs. Oklahoma St.	11/26/22
	8	Rashunda Jones, vs. Valparaiso	12/3/23

MOST REBOUNDS BY A PLAYER

1.	17	Jeanae Terry, vs. Wisconsin	2/13/22
	17	Jeanae Terry, vs. Illinois	2/17/22
3.	14	Jeanae Terry, vs. Illinois	1/26/23
4.	13	Jeanae Terry, vs. Ohio St.	12/5/21
	13	Jeanae Terry, vs. Harvard	11/24/22

MOST ASSISTS BY A PLAYER

1.	12	Jeanae Terry, vs. Minnesota	1/27/22
	12	Jeanae Terry, vs. Northwestern	2/24/22
	12	Jeanae Terry, vs. Indiana St.	11/20/22
	12	vs. Wisconsin	12/30/23
5.	11	Abbey Ellis, vs. Western Mich.	11/14/21

MOST STEALS BY A PLAYER

1.	8	Jeanae Terry, vs. Penn St.	2/22/23
2.	6	Madison Layden, vs. Rutgers	2/20/22
3.	5	Abbey Ellis, vs. Western Mich.	11/14/21
	5	Jeanae Terry, vs. Nebraska	1/30/22
	5	Jeanae Terry, vs. Wisconsin	1/1/23
	5	Jeanae Terry, vs. Wisconsin	3/2/23

MOST BLOCKS BY A PLAYER

1.	4	Caitlyn Harper, vs. Marshall	11/10/22
	4	Caitlyn Harper, vs. Michigan	1/10/23
	4	Rickie Woltman, vs. Illinois St.	11/17/21
4.	3	9x last Rickie Woltman, vs. Iowa	3/3/23

MOST POINTS ALLOWED BY A PLAYER

1.	32	Naz Hillmon, at Michigan	1/24/22
2.	31	Makenna Marisa, Penn St.	2/9/22
3.	27	Monika Czinano, Iowa	1/13/22
	27	Lauren Van Kleunen, at Marquette	3/21/22
5.	26	4x last Teisha Hyman, Syracuse	11/30/22

KG'S RECORD VS. OPPONENTS

Illinois	3-0
Indiana	0-5
Iowa	0-4
Maryland	0-3
Michigan	0-2
Michigan State	2-1
Minnesota	2-2
Nebraska	0-2
Northwestern	2-2
Ohio State	1-1
Penn State	2-2
Rutgers	4-0
Wisconsin	3-2
Big Ten	19-26
Florida State	1-1
Georgia Tech	1-0
Notre Dame	0-1
Syracuse	1-0
ACC	3-2
Oklahoma State	1-0
West Virginia	0-1
Big 12	1-1
UCLA	0-1
Pac-12	0-1
Florida	0-1
Georgia	0-1
Texas A&M	2-0
SEC	2-2
Marquette	0-1
St. John's	0-1
Big East	0-2
Miami	1-0
Western Michigan	1-0
MAC	2-0
Illinois State	2-0
Indiana State	2-0
Murray State	1-0
Southern Illinois	1-0
Valparaiso	1-0
Missouri Valley	7-0
Denver	1-0
Summit	1-0
North Alabama	1-0
ASUN	1-0
Harvard	1-0
Ivy	1-0
Marshall	2-0
Sun Belt	2-0
Western Kentucky	1-0
C-USA	1-0
Southeast Missouri State	1-0
Southern Illinois Edwardsville	1-0
Southern Indiana	1-0
Ohio Valley	3-0
Southern	1-0
SWAC	1-0
Dayton	1-1
A-10	1-1

TEAM GAME-BY-GAME COMPARISON

P | | 12



TEAM STATISTICS BREAKDOWN

All Games	Record	FG-FGA	FG%	3P-3PA	3%	FT-FTA	FT%	Off.	Def.	Tot.	Avg.	F	DQ	Ast.	TO	Blk.	Stl.	Pts.	Avg.
All Games	9-9	443-1053	.421	113-334	.338	237-306	.775	193	443	636	35.3	275	2	272	281	53	139	1236	68.7
		445-1068	.417	113-321	.352	206-266	.774	192	439	631	35.1	313	5	234	294	63	139	1209	67.2
Home	8-2	255-540	.472	67-178	.376	139-182	.764	100	238	338	37.6	150	1	170	120	30	73	716	79.6
		198-516	.384	52-160	.325	115-152	.757	85	200	285	31.7	165	5	95	155	31	62	563	62.6
Away	1-5	122-338	.361	33-102	.324	69-87	.793	56	139	195	32.5	86	0	74	115	20	47	346	57.7
		177-381	.465	40-113	.354	61-78	.782	74	166	240	40.0	107	0	110	92	22	50	455	75.8
Neutral	0-2	39-114	.342	8-41	.195	20-23	.870	23	48	71	35.5	28	1	13	33	2	12	106	53.0
		44-122	.361	6-25	.240	23-28	.821	28	52	80	40.0	29	0	14	29	4	19	117	58.5
Won	9-0	252-533	.473	69-173	.399	139-186	.747	102	253	355	39.4	143	1	168	127	31	72	712	79.1
		190-526	.361	42-142	.296	104-140	.743	92	198	290	32.2	168	5	83	158	29	63	526	58.4
Lost	0-9	191-520	.367	44-161	.273	98-120	.817	91	190	281	31.2	132	1	104	154	22	67	524	58.2
		255-542	.470	71-179	.397	102-126	.810	100	241	341	37.9	145	0	151	136	34	76	683	75.9

Big Ten	Record	FG-FGA	FG%	3P-3PA	3%	FT-FTA	FT%	Off.	Def.	Tot.	Avg.	F	DQ	Ast.	TO	Blk.	Stl.	Pts.	Avg.
All Games	2-5	184-430	.428	41-117	.350	87-114	.763	86	150	236	33.7	112	1	114	103	19	56	496	70.9
		190-405	.469	57-140	.407	87-107	.813	63	171	234	33.4	118	3	108	111	26	45	524	74.9
Home	2-2	115-254	.453	23-66	.348	52-70	.743	55	77	132	33.0	65	1	69	46	10	31	305	76.3
		104-221	.471	38-81	.469	50-59	.847	32	92	124	31.0	64	3	56	69	20	20	296	74.0
Away	0-3	69-176	.392	18-51	.353	35-44	.795	31	73	104	34.7	47	0	45	57	9	25	191	63.7
		86-184	.467	19-59	.322	37-48	.771	31	79	110	36.7	54	0	52	42	6	25	228	76.0

Non-Conference Record	Record	FG-FGA	FG%	3P-3PA	3%	FT-FTA	FT%	Off.	Def.	Tot.	Avg.	F	DQ	Ast.	TO	Blk.	Stl.	Pts.	Avg.
All Games	7-4	259-623	.416	72-217	.332	150-192	.781	107	293	400	36.4	163	1	158	178	34	83	740	67.3
		255-663	.385	56-181	.309	119-159	.748	129	268	397	36.1	195	2	126	183	37	94	685	62.3

Current Streak	Record	FG-FGA	FG%	3P-3PA	3%	FT-FTA	FT%	Off.	Def.	Tot.	Avg.	F	DQ	Ast.	TO	Blk.	Stl.	Pts.	Avg.
Overall	0-4	99-246	.402	21-67	.313	53-65	.815	43	75	118	29.5	62	0	59	62	11	34	272	68.0
		121-228	.531	44-96	.458	52-61	.852	33	105	138	34.5	67	0	76	67	16	30	338	84.5

Month	Record	FG-FGA	FG%	3P-3PA	3%	FT-FTA	FT%	Off.	Def.	Tot.	Avg.	F	DQ	Ast.	TO	Blk.	Stl.	Pts.	Avg.
November	3-3	137-332	.413	32-116	.276	83-102	.814	55	152	207	34.5	87	1	78	92	13	41	389	64.8
		136-359	.379	33-106	.311	69-93	.742	77	141	218	36.3	105	1	71	93	20	52	374	62.3
December	5-2	179-412	.434	56-138	.406	84-113	.743	79	199	278	39.7	107	1	119	117	28	61	498	71.1
		161-422	.382	31-108	.287	68-92	.739	71	170	241	34.4	118	2	79	119	24	54	421	60.1
January	1-4	127-309	.411	25-80	.313	70-91	.769	59	92	151	30.2	81	0	75	72	12	37	349	69.8
		148-287	.516	49-107	.458	69-81	.852	44	128	172	34.4	90	2	84	82	19	33	414	82.8

February

March

Ranked/UR	Record	FG-FGA	FG%	3P-3PA	3%	FT-FTA	FT%	Off.	Def.	Tot.	Avg.	F	DQ	Ast.	TO	Blk.	Stl.	Pts.	Avg.
vs. Ranked	0-4	83-230	.361	18-69	.261	43-53	.811	37	69	106	26.5	57	0	46	64	11	30	227	56.8
		125-236	.530	46-95	.484	42-50	.840	41	110	151	37.8	62	0	85	65	24	32	338	84.5
vs. Unranked	9-5	360-823	.437	95-265	.358	194-253	.767	156	374	530	37.9	218	2	226	217	42	109	1009	72.1
		320-832	.385	67-226	.296	164-216	.759	151	329	480	34.3	251	5	149	229	39	107	871	62.2

5-Game	Record	FG-FGA	FG%	3P-3PA	3%	FT-FTA	FT%	Off.	Def.	Tot.	Avg.	F	DQ	Ast.	TO	Blk.	Stl.	Pts.	Avg.
1-5	2-3	103-273	.377	23-97	.237	65-79	.823	46	122	168	33.6	71	1	54	82	9	32	294	58.8
		115-299	.385	29-86	.337	58-79	.734	66	123	189	37.8	86	1	60	80	17	49	317	63.4
6-10	4-1	137-289	.474	41-100	.410	71-95	.747	50	157	207	41.4	70	0	92	78	21	42	386	77.2
		112-314	.357	24-84	.286	41-58	.707	54	117	171	34.2	90	1	51	76	12	33	289	57.8
11-15	3-2	129-307	.420	33-90	.367	64-84	.762	62	104	166	33.2	90	1	82	70	17	40	355	71.0
		130-289	.450	31-88	.352	70-85	.824	50	123	173	34.6	86	3	69	86	24	30	361	72.2
16-20	0-3	74-184	.402	16-47	.340	37-48	.771	35	60	95	31.7	44	0	44	51	6	25	201	67.0
		88-166	.530	29-63	.460	37-44	.841	22	76	98	32.7	51	0	54	52	10	27	242	80.7

21-25

26-30

31-35

36-40

Postseason	Record	FG-FGA	FG%	3P-3PA	3%	FT-FTA	FT%	Off.	Def.	Tot.	Avg.	F	DQ	Ast.	TO	Blk.	Stl.	Pts.	Avg.
Overall																			

BIG Tourney

NCAA



SCORING BY QUARTERS

 PURDUE WHEN

P | | 14



TEAM HIGHS & LOWS

Stat	Purdue High	Purdue Low	Opp. High	Opp. Low
Points	95 Southern Ind. (11/26/2023)	39, at Notre Dame (12/17/2023)	96, vs. Iowa (1/10/2024)	50 2x last, vs. Wisconsin (12/30/2023)
Field Goals Made	35, vs. Wisconsin (12/30/2023)	14, at Notre Dame (12/17/2023)	35 at UCLA (11/06/2023)	16 Southern U. (11/12/2023)
Field Goal Attempts	68, vs. Wisconsin (12/30/2023)	50 at UCLA (11/06/2023)	72 at Dayton (12/1/2023)	49 vs Indiana (01/21/2024)
Field Goal Percentage	.576 (34-59) Southern Ind. (11/26/2023)	.246 (14-57), at Notre Dame (12/17/2023)	.552 (32-58), at Maryland (1/14/2024)	.200 (4-20) Southern Ind. (11/26/2023)
3-Pointers Made	11, vs. Indiana State (12/20/2023)	2 vs Florida (N) (11/20/2023)	15, 2x last vs Indiana (01/21/2024)	2 2x last vs. SEMO (12/6/2023)
3-Pointers Attempted	25 vs. SEMO (12/6/2023)	13, 2x last vs Indiana (01/21/2024)	33, vs. Iowa (1/10/2024)	7 vs. SEMO (12/6/2023)
3-Point Percentage	.500 (11-22), vs. Indiana State (12/20/2023)	.091 (2-22) vs Florida (N) (11/20/2023)	.652 (15-23) vs Indiana (01/21/2024)	.222 (2-9) vs Georgia (N) (11/22/2023)
Free Throws Made	23, at Penn State (1/18/2024)	5, at Maryland (1/14/2024)	17, vs. Rutgers (1/2/2024)	4 at Dayton (12/1/2023)
Free Throws Attempted	27, at Penn State (1/18/2024)	7, at Maryland (1/14/2024)	21, 2x last, vs. Indiana State (12/20/2023)	5 at Dayton (12/1/2023)
Free Throw Percentage	.941 (16-17), vs. Iowa (1/10/2024)	.643 (9-14) vs Indiana (01/21/2024)	.923 (12-13) vs Florida (N) (11/20/2023)	.583 (7-12) at Minnesota (12/10/2023)
Rebounds	46 vs. Valparaiso (12/3/2023)	22 at UCLA (11/06/2023)	45 at Dayton (12/1/2023)	24, vs. Wisconsin (12/30/2023)
Assists	24 Southern Ind. (11/26/2023)	5 vs Florida (N) (11/20/2023)	29 at UCLA (11/06/2023)	5 2x last vs Florida (N) (11/20/2023)
Steals	12, vs. Wisconsin (12/30/2023)	3, vs. Rutgers (1/2/2024)	15 vs Georgia (N) (11/22/2023)	3 2x last, vs. Iowa (1/10/2024)
Blocks	6 at Dayton (12/1/2023)	1 4x last vs Indiana (01/21/2024)	8, at Notre Dame (12/17/2023)	1, 2x last, at Maryland (1/14/2024)
Turnovers	21 3x last, at Notre Dame (12/17/2023)	9 Texas A&M (11/16/2023)	21, vs. Wisconsin (12/30/2023)	8 at Minnesota (12/10/2023)
Fouls	21, vs. Indiana State (12/20/2023)	11 2x last vs Indiana (01/21/2024)	25, at Penn State (1/18/2024)	12 vs Indiana (01/21/2024)

INDIVIDUAL HIGHS

Stat	Purdue Ind. High	Opponent Ind. High
Points	28, Abbey Ellis, vs. Indiana State (12/20/2023)	26, Caitlin Clark, vs. Iowa (1/10/2024)
Field Goals Made	9, 2x last Caitlyn Harper, vs. SEMO (12/6/2023)	9, Hannah Hidalgo, at Notre Dame (12/17/2023)
Field Goals Attempted	18, Abbey Ellis vs Texas A&M (11/16/2023)	20, Hannah Hidalgo, at Notre Dame (12/17/2023)
3-Pointers Made	4, 6x last Madison Layden, vs. Wisconsin (12/30/2023)	6, 3x last Sara Scalia vs Indiana (01/21/2024)
3-Pointers Attempted	9, Abbey Ellis, vs. Georgia (11/22/2023)	14, Caitlin Clark, vs. Iowa (1/10/2024)
Free Throws Made	10, Rashunda Jones, at Penn State (1/18/2024)	11, Destiny Adams, vs. Rutgers (1/2/2024)
Free Throws Attempted	12, Rashunda Jones, at Penn State (1/18/2024)	11, Destiny Adams, vs. Rutgers (1/2/2024)
Rebounds	15, Caitlyn Harper, at Minnesota (12/10/2023)	13, 2x last Destiny Adams, vs. Rutgers (1/2/2024)
Assists	11, Jeanae Terry, vs. SEMO (12/6/2023)	10, 2x last Caitlin Clark, vs. Iowa (1/10/2024)
Steals	5, Abbey Ellis, vs. Iowa (1/10/2024)	4, 3x last Raeven Raye-Redmond, vs. Valparaiso (12/3/2023)
Blocks	4, Caitlyn Harper, vs. Iowa (1/10/2024)	6, 2x last Yarden Garzon vs Indiana (01/21/2024)

RESULTS/LEADERS

Date	P / O	Opponent	W/L	Score	High Scorer	High Rebounds	High Assists	High Steals	High Blocks	Attend
N6	-/4	at UCLA	L	92-49	10, Ellis/Harper	7, Terry	4, Terry	1, 5 tied	1, Harper/Stevenson	2,157
N12	-/-	Southern	W	67-50	21, Layden	11, Terry	7, Terry	3, Ellis/Layden	1, Stevenson/Jones	5,002
N16	-/RV	Texas A&M	W	72-58	20, Jones/Ellis	11, Harper	10, Terry	3, Terry	1, 3 tied	5,223
N20 Bahamas	-/-	vs. Florida	L	52-49	14, Ellis	6, Stevenson	2, Terry	3, Ellis	1, Stevenson	437
N22 Bahamas	-/-	vs. Georgia	L	65-57	14, Layden	6, Ellis	4, Terry	2, Harper	1, Harper	278
N26	-/-	Southern Indiana	W	95-57	19, Ellis	6, 3 tied	8, Terry	3, Terry	1, 4 tied	3,683
D1	-/-	at Dayton	W	67-59	21, Ellis	8, Terry	4, Terry	3, Harper	2, Terry	3,250
D3	-/-	Valparaiso	W	83-56	22, Jones	10, Stevenson	4, 3 tied	3, Layden	2, Stevenson	5,305
D6	-/-	SEMO	W	83-57	22, Harper	10, Terry	11, Terry	2, Ellis/Layden	1, 4 tied	3,412
D10 Big Ten	-/-	at Minnesota	L	60-58	17, Layden	15, Terry	9, Terry	3, Ellis	2, Harper	3,834
D17	-/14	at Notre Dame	L	76-39	8, Ellis	6, Stevenson	2, Ellis, Layden	2, Ellis	1, 3 tied	9,149
D20	-/-	Indiana State	W	79-63	28, Ellis	8, Stevenson	5, Terry	4, Ellis	1, 5 tied	7,177
D30 Big Ten	-/-	Wisconsin	W	89-50	16, Harper	12, Terry	9, Terry	3, Terry/Layden	2, Layden	5,540
J2 Big Ten	-/-	Rutgers	W	77-76	19, Layden	10, Terry	5, Terry	2, Terry	1, Ellis	3,263
J10 Big Ten	-/3	Iowa	L	96-71	15, Ellis	6, Layden	6, Ellis	5, Ellis	4, Harper	14,876
J14 Big Ten	-/-	at Maryland	L	88-66	14, Harper	5, Terry	6, Terry	2, Terry/Layden	1, Harper/Layden	7,231
J18 Big Ten	-/-	at Penn State	L	80-67	23, Jones	8, Harper	4, Terry	3, Terry	1, 3 tied	2,266
J21 Big Ten	-/16	Indiana	L	74-68	18, Harper	8, Terry	6, Terry	2, Stevenson/Terry	1, Harper	11,796
J24 Big Ten	-/-	at Michigan State								
J28 Big Ten	-/-	Ohio State								
J31 Big Ten	-/-	at Nebraska								
F5 Big Ten	-/-	Illinois								
F11 Big Ten	-/-	at Indiana								
F14 Big Ten	-/-	at Northwestern								
F17 Big Ten	-/-	Nebraska								
F25 Big Ten	-/-	at Wisconsin								
F28 Big Ten	-/-	Penn State								
M3 Big Ten	-/-	at Michigan								

LEADERBOARD

Led in Points	23-24	Career	Led in Rebounds	23-24	Career	Led in Assists	23-24	Career	Led in Steals	23-24	Career	Led in Blocks	23-24	Career
Abbey Ellis	8	27	Jeanae Terry	10	47	Jeanae Terry	16	66	Jeanae Terry	8	38	Madison Layden	8	25
Madison Layden	4	14	Madison Layden	1	10	Madison Layden	1	21	Madison Layden	5	36	Jayla Smith	4	22
Caitlyn Harper	5	9	Abbey Ellis	2	5	Abbey Ellis	2	7	Abbey Ellis	8	18	Caitlyn Harper	10	19
Rashunda Jones	3	3	Caitlyn Harper	2	5	Rashunda Jones	1	1	Jayla Smith		10	Jeanae Terry	3	14
Jayla Smith		2	Mary Ashley Stevenson	4	4	Emily Monson	1	1	Caitlyn Harper	3	6	Abbey Ellis	2	7
			McKenna Layden	1	1				Mary Ashley Stevenson	2	2	Mary Ashley Stevenson	6	6
									McKenna Layden	1	1	Rashunda Jones	2	2
												Emily Monson	1	1
												Mila Reynolds	1	1
												Alaina Harper	1	1

THE LAST TIME A PLAYER

INDIVIDUAL SCORING

Scored 20 Points:	23, Rashunda Jones at Penn State (1/18/24)
Scored 30 Points:	31, Lasha Petree vs. Syracuse (11/30/22)
Scored 35 Points:	38, Brittany Rayburn at Minnesota (1/12/12)
Scored 40 Points:	41, Katie Gearlds at Wisconsin (2/18/07)
Scored 20 Points in Back-to-Back Games:	Lasha Petree 23 vs. Penn State (2/22/23), 26 at Minnesota (2/26/23)
Scored 20 Points in Three Straight Games:	Lasha Petree 23 vs. Indiana (2/19/23), 23 vs. Penn State (2/22/23) 26 at Minnesota (2/26/23)
Two Players w/ 20+:	20, Rashunda Jones and Abbey Ellis vs. Texas A&M (11/16/23)
Three Players w/ 20+:	Whitney Bays (24), KK Houser (21), Liza Clemons (20) & Courtney Moses (20) vs. Central Michigan (12/28/13)
Four Players w/ 20+:	Whitney Bays (24), KK Houser (21), Liza Clemons (20) & Courtney Moses (20) vs. Central Michigan (12/28/13)
Five Players in Double Figures:	Caitlyn Harper (16), Madison Layden (14), Jeanae Terry (13) Mary Ashley Stevenson (13), Abbey Ellis (12) vs. Wisconsin (12/30/23)
10+Points in 10 Straight Games:	10, Abbey Ellis (11/6/23-12/10/23)
10+Points in 20 Straight Games:	35, Shereka Wright (11/29/01 - 12/29/02)
10+Points in 30 Straight Games:	35, Shereka Wright (11/29/01 - 12/29/02)

INDIVIDUAL DOUBLE-DOUBLES

Double-Double:	13 points, 12 rebounds, Jeanae Terry vs. Wisconsin (12/30/23)
Points-Rebounds:	13-12, Jeanae Terry vs. Wisconsin (12/30/23)
Points-Assists:	19-11 Karissa McLaughlin at Wisconsin (12/31/18)
Points-Steals:	27-12, Joy Holmes vs. Minnesota (1/13/89)
Points-Blocks:	12-11, Danielle Campbell vs. Butler (11/17/07)
Freshman:	14-10 reb, Mary Ashley Stevenson, vs. Valparaiso (12/3/23)
Non-Point:	10 reb, 11 ast, Jeanae Terry, vs. SEMO (12/6/23)
20-10 Game:	21 pts, 12 rebs, Ae'Rianna Harris vs. PSU (1/26/20)
30-10 Game:	30 pts, 10 reb, Stephanie White vs. Washington (3/14/98)
20-20 Game:	29 pts, 20 reb, Joy Holmes at Wisconsin (1/27/91)
Consecutive Double-Doubles:	2, Jeanae Terry (11/10-13/22)
in Three Straight Games:	4, Fatou Diagne, (1/18-1/31)
in Five Straight Games:	9, Whitney Bays (12/20/14 - 1/19/15)
Two Players with a Double-Double:	11 pts, 12 reb, Fatou Diagne, 15 pts, 10 reb, Ae'Rianna Harris, vs. Michigan State (3/5/20)
Three Players with a Double-Double:	Ae'Rianna Harris (14 pts, 17 rebs) & Tamara Farquhar (13 pts, 14 rebs), vs. Western Illinois (11/17/20)

INDIVIDUAL TRIPLE-DOUBLES

Triple-Double:	10 pts, 11 rebs, 12 assts - Jeanae Terry - vs. Minnesota (1/27/22)
Before that	11 pts, 12 rebs, 10 assts - Jeanae Terry - vs. Miami (12/19/21)
Before that	12 pts, 11 rebs, 11 blks - Danielle Campbell - vs. Butler (11/17/07)
Before that	20 pts, 11 rebs, 10 assts - Stephanie White - vs. Indiana (1/22/99)

INDIVIDUAL FIELD GOALS

Made 13 Field Goals:	13, Lasha Petree vs. Syracuse (11/30/22)
Made 15 Field Goals:	15, Shereka Wright at Michigan (2/17/02)
Attempted 20 Field Goals:	20 Lasha Petree at Minnesota (2/26/23)
Attempted 25 Field Goals:	25, KK Houser vs. Penn State (1/30/14)
Attempted 30 Field Goals:	33, MaChelle Joseph at Wisconsin (2/21/92)

INDIVIDUAL 3-POINTERS

Made Six 3-Pointers:	6, Abbey Ellis at Illinois (1/20/22)
Made Seven 3-Pointers:	7, Cassidy Hardin vs. Denver (12/12/21)
Made Eight 3-Pointers:	9, Karissa McLaughlin vs. NU (2/17/19)
Attempted 12 3-Pointers:	12, Cassidy Hardin at Nebraska (1/30/22)
Attempted 13 3-Pointers:	14, Madison Layden vs. Ohio State (12/5/21)
Made a 3-Pointer in 20 Straight Games:	24, Madison Layden (12/9/20-11/17/21) 23, Cassidy Hardin (3/10/21-2/4/22)

INDIVIDUAL FREE THROWS

Made 13 FTs:	14, Courtney Moses at Northwestern (1/26/12)
Made 15 FTs:	15, Ukari Figgs vs. Washington (3/14/98)
Attempted 16 FTs:	18, Brittany Rayburn vs. Gardner-Webb (12/21/09)
Attempted 18 FTs:	18, Brittany Rayburn vs. Gardner-Webb (12/21/09)
Attempted 20 FTs:	20, Shereka Wright at Northwestern (2/15/04)

INDIVIDUAL STEALS

Grabbed Five Steals:	5, Abbey Ellis vs. Iowa (1/10/24)
Grabbed Six Steals:	8, Jeanae Terry vs. Penn State (2/22/23)
Grabbed Seven Steals:	8, Jeanae Terry vs. Penn State (2/22/23)
Grabbed Eight Steals:	8, Jeanae Terry vs. Penn State (2/22/23)

INDIVIDUAL REBOUNDS

Grabbed 15 Rebounds:	15, Jeanae Terry at Minnesota
Grabbed 16 Rebounds:	17, Jeanae Terry vs. Illinois (2/17/22)
Grabbed 17 Rebounds:	17, Jeanae Terry vs. Illinois (2/17/22)
Grabbed 18 Rebounds:	18, Fatou Diagne vs. Penn State (1/31/21)
Grabbed 19 Rebounds:	19, Whitney Bays vs. Ohio State (1/25/15)
Grabbed 20 Rebounds:	20, Joy Holmes at Wisconsin (1/27/91)
Grabbed Eight Off. Rebounds:	9, Jeanae Terry at Wisconsin (2/13/22)
10+ Rebounds in Three Straight Games:	3, Ae'Rianna Harris (11/17/19-11/29/19)
Two Players with 10+ Rebounds in a Game:	Tamara Farquhar (14) & Ae'Rianna Harris (17) vs. Western Illinois (11/17/19)
Three Players 10+ Rebounds in a Game:	Bridget Perry (11), Whitney Bays (11) & Liza Clemons (13) vs. Northwestern (2/11/15)

INDIVIDUAL ASSISTS

Dished Out 10 Assists:	10, Jeanae Terry vs. Texas A&M (11/16/23)
Dished Out 11 Assists:	12, Jeanae Terry vs. Indiana State (11/20/22)
Dished Out 12 Assists:	12, Jeanae Terry vs. Indiana State (11/20/22)
Dished Out 5+ Assists in Five Straight Games:	11 Jeanae Terry (11/20/22-12/29/22)
Dished Out 10+ Assists in Two Straight Games:	Jeanae Terry vs. Marshall (11/10/22) & Murray State (11/14/22)

INDIVIDUAL BLOCKED SHOTS

Posted Five Blocks:	7, Ae'Rianna Harris vs. Michigan State (3/5/20)
Posted Six Blocks:	7, Ae'Rianna Harris vs. Michigan State (3/5/20)
Posted Seven Blocks:	7, Ae'Rianna Harris vs. Michigan State (3/5/20)
Posted Eight Blocks:	9, Ae'Rianna Harris at South Carolina (12/15/19)
Blocked 5+ Shots in Back-to-Back Games:	Ae'Rianna Harris vs. UT Martin, 5 (12/18/17), Saint Mary's, 5 (12/20/17) & at Rutgers, 7 (12/28/17)

INDIVIDUAL MINUTES

Played a Complete Game:	Madison Layden vs. Michigan State (3/3/22)
Played at Least 40 Minutes:	Jeanae Terry vs. Michigan State (12/4/22)
Played Every Minute of an Overtime Game:	Dominique Oden (45)
Freshman Played 40 Minutes:	Karissa McLaughlin (45) at Rutgers (1/16/19)
Freshman Played a Complete Game:	Madison Layden (40) vs. Rutgers (2/14/21)
Played Consecutive Complete Games:	Madison Layden (40) vs. Rutgers (2/14/21) Kayana Traylor, 2 vs. Michigan (2/11/21)

INDIVIDUAL FOULS

Technical Foul - Player:	Ra Shaya Kyle vs. Florida State (11/27/21)
Technical Foul - Coach:	Katie Gearlds vs. SIUE (11/17/22)
Fouled Out:	Abbey Ellis, vs. Wisconsin (12/30/23)
Two Players Fouled Out:	Ra Shaya Kyle, Fatou Diagne vs. Michigan (2/11/21)
Three Players Fouled Out:	Tamara Farquhar, Ae'Rianna Harris & Dominique Oden vs. South Carolina (12/16/18 - 2 OT)

THE LAST TIME PURDUE**TEAM SCORING (GAME)**

Won by 40+:	42 (80-38) at Ball State (11/7/18)
Won by 40+ (Big Ten):	43 (88-45) vs. Nebraska (1/26/17)
Lost by 20+:	22 (88-66) at Maryland (1/6/24)
Lost by 30+:	37 (76-39) at Notre Dame (12/17/23)
Scored 90+:	95 vs. (95-57) vs. Southern Indiana (11/26/23)
Scored 90+ (Big Ten):	91 at Penn State (12/20/20)
Scored 100+:	100 vs. SIUE (11/17/22)
Scored 100+ (Big Ten):	110 (110-51) at Michigan (3/12/94)
Scored 40 or Fewer:	39 at Notre Dame (12/17/23)
Scored 50 or Fewer:	39 at Notre Dame (12/17/23)
Scored 50 or Fewer and Won:	48 (48-46) at IUPUI (3/15/18)
Allowed 90+:	96 vs. Iowa (1/10/24)
Allowed 90+ (Big Ten):	96 vs. Iowa (1/10/24)
Allowed 100+:	100 at Ohio State (2/18/21)
Allowed 50 or Fewer:	50 vs. Wisconsin (12/29/23)
Allowed 40 or Fewer:	38 at Ball State (11/7/18)

TEAM SCORING (HALF)

Scored 60 in the First Half:	68 vs. Kent State (12/8/90)
Scored 60 in the Second Half:	60 vs. South Alabama (12/27/94)
Scored 50 Points or More:	50 (2nd), vs. Valparaiso (12/3/23)
Scored 15 Points or Less:	15 (1st) vs. No. 18 Indiana (1/14/21)
Scored 20 Points or Less:	18 (1st) at Notre Dame (12/17/23)
Allowed 50+:	51 (1st) vs. Iowa (1/10/24)
Allowed 15 Points or Less:	15 (1st) at Wisconsin (2/13/22)
Allowed 20 Points or Less:	19 (1st) vs. Southern (11/12/23)

TEAM SCORING (QUARTER)

Scored 30+:	35 (1st) vs. Southern Indiana (11/26/23)
Scored 25+:	29 (1st) vs. Indiana (1/21/24)
Scored 10 Points or Less:	8 (2nd) vs. Indiana (1/21/24)
Scored 5 Points or Less:	2 (3rd) vs. Indiana (2/5/23)
Allowed 30+:	32 (4th) vs. Penn State (2/9/22)
Allowed 25+:	29 (1st) vs. Iowa (1/10/24)
Allowed 10 Points or Less:	7 (1st) at Minnesota (12/10/2023)
Allowed 5 Points or Less:	2 (1st) at Wisconsin (2/13/22)

TEAM SHOOTING

Shot 65% or Higher:	.735 (36-59) vs. Penn State (1/28/18)
Shot 60% or Higher:	.607 (34-56) vs. Harvard (11/24/22)
Shot 55% or Higher:	.576 (34-59) vs. Southern Indiana (11/26/23)
Shot 50% or Higher:	.515 (35-68) vs. Wisconsin (12/30/23)
Shot 30% or Lower:	.246 (14-57) at Notre Dame (12/17/23)
Shot 25% or Lower:	.246 (14-57) at Notre Dame (12/17/23)
Shot 35% or Lower and Won:	.308 (20-65) vs. Wisconsin (1/21/21)
Opponent Shot 55% or Higher:	.552 (32-58) at Maryland (1/6/24)
Opponent Shot 50% or Higher:	.531 (26-49) vs. Indiana (1/21/24)
Opponent Shot 30% or Lower:	.281 (16-57) vs. Southern (11/12/23)
Opponent Shot 25% or Lower:	.242 (16-66) at Rutgers (2/19/17)

TEAM 3-POINT SHOOTING

Made 10+:	11, vs. Indiana State (12/20/23)
Made 12+:	15 at Illinois (1/20/22)
Made 15+:	15 vs. Central Michigan (12/28/13), at Illinois (1/20/22)
Made 0:	0 vs. Valparaiso (12/6/20)
Attempted 25+:	25, vs. SEMO (12/6/23)
Attempted 30+:	30 at Rutgers (2/9/23)
Attempted Five or Less:	4 at UCLA (11/6/23)
Shot 50%+:	.500 (11-22) vs. Indiana State (12/20/23)
Shot 60%+:	.600 (6-10) vs. St. John's (3/16/23)

TEAM FREE THROW SHOOTING

Made 25+:	26 vs. Southern (11/12/23)
Made 30+:	32 vs. DePaul (11/21/10)
Made Five or Less:	2 at Rutgers (2/9/23)
Made All Attempted:	7-7 at No. 5 Indiana (2/6/22)
Attempted 30+:	36 vs. SIUE (11/17/22)
Attempted 40+:	41 vs. Minnesota (1/18/04)
Attempted 10 or Less:	8 at Notre Dame (12/17/23)
Attempted Five or Less:	3 at Rutgers (2/9/23)

TEAM REBOUNDS

Had 20+ Rebound Margin:	20 (44-24) vs. Wisconsin (12/30/23)
Had 25+ Rebound Margin:	30 (55-25) vs. USC Upstate (11/17/16)
Outrebounded by 20+:	24 (50-26) vs. No. 8 Maryland (2/25/21)
Outrebounded by 25+:	28 (28-56) at Notre Dame (12/29/13)

TEAM ASSISTS

Had 25:	25 vs. Murray State (11/13/22)
Had 30:	31 vs. Incarnate Word (12/10/15)
Had Five or Fewer:	5 at Indiana (3/6/21)

TEAM TURNOVERS

Committed 10 or Fewer:	10 vs. Rutgers (1/2/24)
Committed 20+:	21 at Notre Dame (12/17/23)
Forced 10 or Fewer:	8 at Ohio State (2/18/21)
Forced 20+:	26 vs. Wisconsin (1/1/23)

TEAM CLOSE GAMES

One-Point Games:	W, 77-76, vs. Rutgers (1/2/24)
Two-Point or less Games:	L, 60-58 at Minnesota (12/10/2023)
Three-Point or less Games:	L, 52-49 vs. Florida (11/20/23)
Back-to-Back Games Decided by Three Points or Less:	L, 63-65 (OT) at Rutgers (1/16/19); W 56-53 vs. Indiana (1/20/19)
Last Second Shot to Win:	Jeanae Terry, 2, vs. Georgia Tech (12/1/21)
Lost on a Last Second Shot:	Jeanae Terry, 2, vs. Rutgers (1/3/22)
Opponent missed a Last Second Shot:	Shyanne Sellers, 3-pt vs. Maryland (12/8/22)
	Destiny Adams, 2-pt 77-76, vs. Rutgers (1/2/24)

TEAM OVERTIME

Overtime Game:	W, 76-71 vs. Michigan State (12/4/22)
Double Overtime Game:	L, 73-82 vs. South Carolina (12/16/18)
Triple Overtime Game:	W, 82-75 vs. Nebraska (2/2/12)
Consecutive Overtime Games:	W, 90-88 at Minnesota (1/22/15); L, 71-79 vs. Ohio State (1/25/15)

TEAM COMEBACKS

Came Back from 10+ Down to Win:	18 - W, 57-55 vs. Wisconsin (3/2/23) (3/2/23; down 30-12 w/ 4:27 left in the 2nd)
Came Back from 15+ Down to Win:	18 - W, 57-55 vs. Wisconsin (3/2/23) (3/2/23; down 30-12 w/ 4:27 left in the 2nd)

TEAM RANKED OPPONENTS

Beat a Ranked Team:	#2 Ohio State (1/29/23)
Beat Back-to-Back Ranked Team:	#22 Illinois, 62-52 (1/26/23)
Beat a Ranked Team on the Road:	#2 Ohio State (1/29/23)
Beat a Top-10 Ranked Team:	at #2 Ohio State (1/29/23)
Beat a Top-10 Ranked Team on the Road:	at #2 Ohio State (1/29/23)
Beat a Top-5 Ranked Team:	at #2 Ohio State (1/29/23)
Beat a Top-5 Ranked Team on the Road:	at #2 Ohio State (1/29/23)

TRANSFERS' PURDUE BESTS**Jeanae Terry's Purdue Highs**

Points	17, vs. SIUE, 11/17/22
Rebounds	17, 2x last vs. Illinois, 2/17/22
Assists	12, 3x last, vs. Wisconsin, 12/30/23
Steals	8, vs. Penn State, 2/22/23
Blocks	2, 3x last at Dayton, 12/1/23
Field Goals	7, at Indiana, 2/6/22
3-Pointers	2, vs. Michigan State, 3/3/22
Free Throws	9, vs. Miami (OH), 12/19/21
Minutes	41, at Michigan State, 12/5/22

Mila Reynolds' Purdue Highs

Points	6, vs. Valparaiso, 12/3/23
Rebounds	5, vs. Valparaiso, 12/3/23
Assists	1, 2x last, vs. Valparaiso, 12/3/23
Steals	
Blocks	1, at Notre Dame, 12/17/23
Field Goals	2, vs. Indiana St., 12/20/23
3-Pointers	1, vs. Indiana St., 12/20/23
Free Throws	4, vs. Valparaiso, 12/3/23
Minutes	16, vs. Valparaiso, 12/3/23

Abbey Ellis' Purdue Highs

Points	29, vs. SIUE, 11/17/22
Rebounds	9, vs. Southern Illinois, 3/16/22
Assists	11, vs. Western Michigan, 11/14/21
Steals	5, 2x last, vs. Iowa, 1/10/24
Blocks	1, 12x last, vs. Rutgers, 1/2/24
Field Goals	9, 3x last vs. Texas A&M, 11/16/23
3-Pointers	6, at Illinois, 1/20/22
Free Throws	9, 2x last
Minutes	44, vs. Indiana, 1/16/22

Alaina Harper's Purdue Highs

Points	4, vs. SEMO, 12/6/23
Rebounds	2, 3x last, vs. Wisconsin, 12/30/23
Assists	
Steals	
Blocks	1, vs. Indiana St., 12/20/23
Field Goals	2, vs. SEMO, 12/6/23
3-Pointers	
Free Throws	
Minutes	14, vs. Southern Indiana, 11/26/23

Caitlyn Harper's Purdue Highs

Points	22, vs. SEMO, 12/6/23
Rebounds	11, vs. Texas A&M, 11/16/23
Assists	4, 2x last, at Penn State, 1/18/24
Steals	3, at Dayton, 12/1/23
Blocks	4, 2x last, vs. Iowa, 1/10/24
Field Goals	9, 2x last, vs. SEMO, 12/6/23
3-Pointers	2, 7x last, vs. SEMO, 12/6/23
Free Throws	8, vs. Nebraska, 1/18/23
Minutes	38, vs. Indiana, 1/21/24

AMIYAH REYNOLDS 1

Height - 6-0 | **Position** - Guard | **Year** - Sophomore | **Major** - Business | **Hometown** - Indianapolis, Ind. | **High School** - Lawrence North
Instagram - s.jaylasmith | **Twitter** - _JaylaSmith | **TikTok** - s.jaylasmith

REYNOLDS QUICK HITS

- No. 43 player in the nation by ESPN HoopGurlz, second highest signee in the Big Ten for the 2023 class
- Finished third as a finalist for the 2023 Indiana Miss Basketball
- Joined 2010 South Bend Washington graduate Skylar Diggins-Smith as the only Panthers to total over 1,000 points and 500 assists in a career
- Named an Indiana All-Star and All-State Supreme 15 as a junior and senior
- Went 95-18 over four years with the Panthers, with a 68-17 record when playing with her sister Mila
- Won 2022 IHSAA 3A State Championship, helping set the championship game record for 3A as the Panthers scored 93 points
- Ended career ranked second in assists at Washington with 564 • Scored 1,000th career point off an assist from Rashunda Jones

RASHUNDA JONES

2

Height - 5-8 | **Position** - Guard | **Year** - Freshman | **Major** - Sports Marketing
Hometown - South Bend, Ind. | **High School** - South Bend Washington
Instagram - rashunda_jones | **TikTok** - itzshunda



	Season High	Career High
Points	23, at Penn State, 1/18/24	23, at Penn State, 1/18/24
Rebounds	5, 3x last vs. USI, 11/26/23	5, 3x last vs. USI, 11/26/23
Assists	4, vs. Valparaiso, 12/3/23	4, vs. Valparaiso, 12/3/23
Steals	2, 2x last, at Penn State, 1/18/24	2, 2x last, at Penn State, 1/18/24
Blocks	1, 2x last, vs. Texas A&M, 11/16/23	1, 2x last, vs. Texas A&M, 11/16/23
Field Goals	8, vs. Texas A&M, 11/16/23	8, vs. Texas A&M, 11/16/23
3-Pointers	1, 7x last, at Penn State, 1/18/24	1, 7x last, at Penn State, 1/18/24
Free Throws	10, at Penn State, 1/18/24	10, at Penn State, 1/18/24
Minutes	26, vs. USI, 11/26/23	26, vs. USI, 11/26/23

SEASON	GP-GS	MIN/AVG	FG-FGA	FG%	3FG-FGA	3FG%	FT-FTA	FT%	OFF	DEF	TOT	AVG	PF-FO	AST	TO	BLK	STL	PTS	AVG
2023-24	14-0	255/18.2	46-119	.387	8-24	.333	40-52	.769	6	30	36	2.6	34-1	22	25	2	9	140	10.0

JONES QUICK HITS

- Named Big Ten Freshman of the Week after scoring 20 points against Texas A&M
- First Purdue freshman with multiple 20-point games since 2017-18
- 2023 Indiana Miss Basketball runner-up
- No. 79 player in the nation by ESPN HoopGurlz
- 2022 IHSA Class 3A State Champion
- Indiana All-Star & IBCA Supreme 15 as a junior and senior
- Won 2022 IHSA 3A State Championship
- Finished career with 1,791 points, 497 rebounds, 427 assists and 419 steals
- Assisted on Amiyah Reynolds' 1,000th career point

JAYLA SMITH

3

Height - 6-0 | **Position** - Guard | **Year** - Junior | **Major** - Business
Hometown - Indianapolis, Ind. | **High School** - Lawrence North
Instagram - s.jaylasmith | **Twitter** - _JaylaSmith | **TikTok** - s.jaylasmith



	Season High	Career High
Points	13, vs. Florida, 11/20/23	16, 3x last vs. Iowa, 3/3/23
Rebounds	5, vs. Florida, 11/20/23	7, 3x last vs. Nebraska, 1/18/23
Assists	1, 11x last, at Maryland, 1/14/24	4, 2x last vs. Nebraska, 1/18/23
Steals	2, vs. Valparaiso, 12/3/23	4, 2x last, vs. SIUE, 11/17/22
Blocks	2, vs. Wisconsin, 12/30/23	3, 2x last vs. Indiana, 2/5/23
Field Goals	6, vs. Florida, 11/20/23	7 vs. Iowa, 3/3/23
3-Pointers	1, 2x last, vs. Wisconsin, 12/30/23	4, at Nebraska, 1/30/22
Free Throws	4, at Notre Dame, 12/17/23	4, at Notre Dame, 12/17/23
Minutes	23, vs. Florida, 11/20/23	30 at Penn State, 1/7/23

SEASON	GP-GS	MIN/AVG	FG-FGA	FG%	3FG-FGA	3FG%	FT-FTA	FT%	OFF	DEF	TOT	AVG	PF-FO	AST	TO	BLK	STL	PTS	AVG
2021-22	30-1	473/15.8	54-140	.386	16-55	.291	16-26	.615	13	39	52	1.7	25-0	21	29	11	22	140	4.7
2022-23	30-3	569/19.0	95-209	.455	18-64	.281	26-46	.565	24	40	64	2.1	32-0	37	38	17	30	234	7.8
2023-24	17-1	242/14.2	27-84	.321	3-20	.150	10-16	.625	10	17	27	1.6	11-0	11	18	5	6	67	3.9
TOTAL	77-5	1285/16.7	176-433	.406	37-139	.266	52-88	.591	47	96	143	1.9	68-0	69	85	33	58	441	5.7

SMITH QUICK HITS

- Sank game-winning 3-pointer vs. Wisconsin in Big Ten Tournament, helping send Purdue to the NCAA Tournament
- Primary substitute as a freshman with one start
- 2021 Indiana Miss Basketball, 10th in program history
- Won the 2020 Indiana 3A State Championship, over Madison Layden's Northwestern, hitting 8 3-pointers
- No. 49 player in the nation and No. 1 in Indiana by MaxPreps
- 3-time First Team All-State selection
- Set season-long career highs in nearly every statistical category in 2022-23
- Ranked No. 49 player in the nation and the No. 1 player in the state of Indiana by MaxPreps

JEANAE TERRY

10

Height - 5-11 | **Position** - Guard | **Year** - Fifth Year | **Major** - Sociology
Hometown - Detroit, Mich. | **High School** - Wayne Memorial | **Previous** - Illinois
Instagram - saucy__nae | **Twitter** - basquetbol_nae | **TikTok** - saucytiktok10



	Season High	Career High	(*prior school)
Points	13, vs. Wisconsin, 12/30/23	28, at Wisconsin, 1/31/21*	
Rebounds	15, at Minnesota, 12/10/23	17, 2x last vs. Illinois, 2/17/22	
Assists	11, vs. SEMO, 12/6/23	12 3x last, vs. Indiana St., 11/20/22	
Steals	3, 3x last, vs. Wisconsin, 12/30/23	8 vs. Penn State, 2/22/23	
Blocks	2, at Dayton, 12/1/23	4, vs. Chicago State, 11/5/19*	
Field Goals	5, 2x last, vs. Iowa, 1/10/24	9, vs. Penn State, 1/28/21*	
3-Pointers	1, 2x last, at Notre Dame, 12/17/23	3, 3x last vs. Ohio State, 1/7/21*	
Free Throws	4, vs. Texas A&M, 11/16/23	11, at Wisconsin, 1/31/21*	
Minutes	39, vs. Rutgers, 1/2/24	41, at Michigan State, 12/4/22	

SEASON	GP-GS	MIN/AVG	FG-FGA	FG%	3FG-FGA	3FG%	FT-FTA	FT%	OFF	DEF	TOT	AVG	PF-FO	AST	TO	BLK	STL	PTS	AVG
2019-20	30-11	693/23.1	65-225	.289	15-57	.263	40-66	.606	34	79	113	3.8	55-1	91	50	17	35	185	6.2
2020-21	23-23	690/30.0	89-226	.394	15-58	.259	54-74	.730	48	131	179	7.8	48-1	101	96	6	41	247	10.7
2021-22	32-32	949/29.6	88-215	.409	3-21	.143	51-74	.689	66	157	223	7.0	80-2	183	100	14	41	230	7.2
2022-23	30-30	898/29.9	74-185	.400	1-10	.100	45-71	.634	60	167	227	7.6	62-0	190	93	12	70	194	6.5
2023-24	18-18	531/29.5	31-81	.383	2-3	.667	27-37	.730	37	89	126	7.0	35-0	102	54	6	28	91	5.1
PURDUE	80-80	2378/29.7	193-481	.401	6-34	.176	123-182	.676	163	413	576	7.2	177-2	475	247	32	139	515	6.4
TOTAL	133-114	3761/28.3	347-932	.372	36-149	.242	217-322	.674	245	623	868	6.5	280-4	667	393	55	215	947	7.1

TERRY QUICK HITS

- Eighth in career assists at Purdue
- Second player from the Big Ten to join the 800-rebound, 600-assist and 200-steal club (Samantha Logic, Iowa)
- 2nd Team All-Big Ten, All-Defensive Team honoree last year
- Joined Caitlin Clark hit 150 ast, 200 reb the last two seasons
- Has only four non-point double-doubles in Purdue history
- Only Boilermaker (men or women) in history to record multiple triple-doubles in a season and a career
- Joined Stephanie White as the only Boilermaker to ever record over 150 assists and 200 rebounds in a season
- High school jersey retired over holiday break in 2023

MCKENNA LAYDEN

11

Height - 6-2 | **Position** - Guard | **Year** - Freshman | **Major** - Pre-dental
Hometown - Kokomo, Ind. | **High School** - Northwestern
Instagram - mckenna.layden | **Twitter** - _mckennalayden | **TikTok** - mckenna.layden



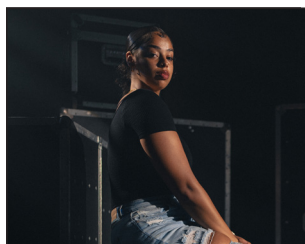
	Season High	Career High
Points	8, vs. USI, 11/26/23	8, vs. USI, 11/26/23
Rebounds	6, vs. USI, 11/26/23	6, vs. USI, 11/26/23
Assists	2, 2x last, at Maryland, 1/14/24	2, 2x last, at Maryland, 1/14/24
Steals	1, 8x last, at Maryland, 1/14/24	1, 8x last, at Maryland, 1/14/24
Blocks	1, at Dayton, 12/1/23	1, at Dayton, 12/1/23
Field Goals	2, 2x last, at Notre Dame, 12/17/23	2, 2x last, at Notre Dame, 12/17/23
3-Pointers	2, vs. USI, 11/26/23	2, vs. USI, 11/26/23
Free Throws	2, vs. USI, 11/26/23	2, vs. USI, 11/26/23
Minutes	22, vs. USI, 11/26/23	22, vs. USI, 11/26/23

SEASON	GP-GS	MIN/AVG	FG-FGA	FG%	3FG-FGA	3FG%	FT-FTA	FT%	OFF	DEF	TOT	AVG	PF-FO	AST	TO	BLK	STL	PTS	AVG
2023-24	17-0	169/9.9	7-26	.269	6-20	.300	3-4	.750	3	20	23	1.4	5-0	9	3	1	8	23	1.4

LAYDEN QUICK HITS

- Playing alongside Madison for the first time since her freshman year, when they reached the IHSA State Championship Game
- Tabbed Elite 150 by Prospects Nation
- Indiana All-Star & IBCA Supreme 15 as a junior and senior
- Two-time sectional champion, won regional and semi-state once, appeared in one state final
- Named an Indiana Junior Core Six All-Star as a junior
- Posted a 78-17 record in high school
- Won two sectional titles in volleyball and two in tennis
- Her mother Kathie was her head coach in high school, won five state titles during coaching career - most by non-private coach

MILA REYNOLDS 15



Height - 6-3 | **Position** - Forward | **Year** - Sophomore | **Major** - African American Studies
Hometown - South Bend, Ind. | **High School** - South Bend Washington | **Previous** - Maryland
Instagram - milareynolds15 | **Twitter** - 15milareynolds | **TikTok** - milamarie_15

	Season High	Career High
Points	6, vs. Valparaiso, 12/3/23	6, vs. Valparaiso, 12/3/23
Rebounds	5, vs. Valparaiso, 12/3/23	5, vs. Valparaiso, 12/3/23
Assists	1, 2x last, vs. Valparaiso, 12/3/23	2, at Northwestern, 29/23*
Steals		1, 2x last vs. Pitt, 11/27/22*
Blocks	1, at Notre Dame, 12/17/23	1, 2x last, at Notre Dame, 12/17/23
Field Goals	2, vs. Indiana St., 12/20/23	2, 3x last, vs. Indiana St., 12/20/23
3-Pointers	1, vs. Indiana St., 12/20/23	1, vs. Indiana St., 12/20/23
Free Throws	4, vs. Valparaiso, 12/3/23	4, vs. Valparaiso, 12/3/23
Minutes	16, vs. Valparaiso, 12/3/23	16, vs. Valparaiso, 12/3/23

SEASON	GP-GS	MIN/AVG	FG-FGA	FG%	3FG-FGA	3FG%	FT-FTA	FT%	OFF	DEF	TOT	AVG	PF-FO	AST	TO	BLK	STL	PTS	AVG
2022-23	22-0	111/5.1	9-29	.310	0-2	.000	5-6	.833	7	12	19	0.9	13-0	4	6	1	2	23	1.0
2023-24	11-0	77/7.0	7-20	.350	1-6	.167	7-9	.778	2	9	11	1.0	12-0	2	8	1	1	22	2.0
TOTAL	33-0	189/5.7	16-49	.327	1-8	.125	12-15	.800	9	21	30	0.9	25-0	6	14	2	3	45	1.4

REYNOLDS QUICK HITS

- Transferred to Purdue in May of 2023
- Saw action in 22 games with the Terrapins
- No. 60 player, No. 16 forward, four-star, 94 rating by ESPN HoopGurlz- Finished third in voting for the 2022 Indiana Miss Basketball
- Tabbed Indiana All-Star & IBCA Academic All-State as a senior
- Played alongside Amiyah Reynolds and Rashunda Jones for three seasons, going 78-30 over four years and 68-17 with Amiyah
- Totaled 2,099 career points, second in Panther history behind 2010 graduate Skylar Diggins-Smith

MARY ASHLEY STEVENSON 20



Height - 6-2 | **Position** - Forward | **Year** - Freshman | **Major** - Communications
Hometown - New York City, N.Y. | **High School** - The Dalton School
Instagram - maryashleystevenson | **Twitter** - _MA_Stevenson20

	Season High	Career High
Points	14, vs. Valparaiso, 12/3/23	14, vs. Valparaiso, 12/3/23
Rebounds	11, at Minnesota, 12/10/23	11, at Minnesota, 12/10/23
Assists	2, 6x last, vs. Rutgers, 1/2/24	2, 6x last, vs. Rutgers, 1/2/24
Steals	2, 2x last, vs. Indiana, 1/21/24	2, 2x last, vs. Indiana, 1/21/24
Blocks	2, vs. Valparaiso, 12/3/23	2, vs. Valparaiso, 12/3/23
Field Goals	6, vs. Indiana, 1/21/24	6, vs. Indiana, 1/21/24
3-Pointers	1, at Minnesota, 12/10/23	1, at Minnesota, 12/10/23
Free Throws	7, at Penn State, 1/18/24	7, at Penn State, 1/18/24
Minutes	36, at Minnesota, 12/10/23	36, at Minnesota, 12/10/23

SEASON	GP-GS	MIN/AVG	FG-FGA	FG%	3FG-FGA	3FG%	FT-FTA	FT%	OFF	DEF	TOT	AVG	PF-FO	AST	TO	BLK	STL	PTS	AVG
2023-24	18-17	509/28.3	63-160	.394	1-18	.056	44-58	.759	37	61	98	5.4	41-0	18	38	8	12	171	9.5

STEVENSON QUICK HITS

- Earned Big Ten Freshman of the Week after averaging 12 points and eight rebounds against Wisconsin and Indiana State
- First career double-double vs. Valpo (14 pts, 10 rebs), first points-rebounds freshman double-double at Purdue since 2009-10
- First Purdue freshman to score at least five pts and have an rebounds, assist, steal and block in a season opener since 2009 (8 pts, 2 rebs, 1 asts, 1 stls, 1 blks)
- Runner-up N.Y. Miss Basketball and Gatorade Player of the Year
- 3x state champion, two in New York and one in South Carolina
- Back-to-back New York State Sportswriters Association State Player of the Year (Class B&C) in 2021-22 and 2022-23
- Played high school ball under assistant coach Doug Feinberg

EMILY MONSON 21



Height - 6-1 | **Position** - Guard | **Year** - Freshman | **Major** - Psychology
Hometown - Murfreesboro, Tenn. | **High School** - Blackman
Instagram - emilymonson_ | **Twitter** - _emily_monson21 | **TikTok** - emillymonson

	Season High	Career High
Points	4, at UCLA, 11/6/23	4, at UCLA, 11/6/23
Rebounds	4, vs. SEMO, 12/6/23	4, vs. SEMO, 12/6/23
Assists	4, vs. Valparaiso, 12/3/23	4, vs. Valparaiso, 12/3/23
Steals	1, at UCLA, 11/6/23	1, at UCLA, 11/6/23
Blocks	1, vs. USI, 11/26/23	1, vs. USI, 11/26/23
Field Goals	1, 2x last, vs. Valparaiso, 12/3/23	1, 2x last, vs. Valparaiso, 12/3/23
3-Pointers	1, 3x last, vs. Indiana St., 12/20/23	1, 3x last, vs. Indiana St., 12/20/23
Free Throws	1, at UCLA, 11/6/23	1, at UCLA, 11/6/23
Minutes	14, vs. USI, 11/26/23	14, vs. USI, 11/26/23

SEASON	GP-GS	MIN/AVG	FG-FGA	FG%	3FG-FGA	3FG%	FT-FTA	FT%	OFF	DEF	TOT	AVG	PF-FO	AST	TO	BLK	STL	PTS	AVG
2023-24	11-0	56/5.1	4-16	.250	3-9	.333	1-2	.500	2	6	8	0.7	11-0	8	6	1	1	12	1.1

MONSON QUICK HITS

- Naismith High School All-America honorable mention
- No. 15 player in the state by Prep Girls Hoops
- Guided the Blaze to a 2021 Tennessee 3A State Championship
- Won four regional championships and three district titles
- Went 107-16 over high school career, including 81-8 as a starter for three seasons
- Scored 1,066 points with 337 rebounds and 117 steals in career
- Connected on 104 3-pointers at a 41% rate in final campaign
- Scored more points as a senior than her first three seasons combined
- Guided Blackman to the Elite Eight of the TSSAA 4A State Tournament

ABBEY ELLIS 23



Height - 5-6 | **Position** - Guard | **Year** - Fifth Year | **Major** - Early Childhood Education
Hometown - Melbourne, Australia | **High School** - Our Lady of Mercy | **Previous** - Cal Poly
Instagram - _abbeyellis | **Twitter** - _abbeyellis | **TikTok** - abbeye_22

	Season High	Career High	(*prior school)
Points	21, at Dayton, 12/1/23	39, at San Diego St., 12/21/20*	
Rebounds	6, 2x last, vs. USI, 11/26/23	10, vs. Long Beach St., 3/10/21*	
Assists	7, vs. USI, 11/26/23	11, vs. Western Michigan, 11/14/21	
Steals	5, vs. Iowa, 1/10/24	8, vs. Santa Clara, 12/15/20*	
Blocks	1, 2x last, vs. Rutgers, 1/2/24	1, 18x last, vs. Rutgers, 1/2/24	
Field Goals	9, vs. Texas A&M, 11/16/23	14, vs. UC Riverside, 1/23/20*	
3-Pointers	2, 3x last, vs. Wisconsin, 12/30/23	8, at UC San Diego, 1/1/21*	
Free Throws	9, vs. Indiana St., 12/20/23	10, at UC San Diego, 1/2/21*	
Minutes	39, at Minnesota, 12/10/23	44 vs. Indiana, 1/16/22	

SEASON	GP-GS	MIN/AVG	FG-FGA	FG%	3FG-FGA	3FG%	FT-FTA	FT%	OFF	DEF	TOT	AVG	PF-FO	AST	TO	BLK	STL	PTS	AVG
2019-20	29-29	950/32.8	165-392	.421	48-148	.324	73-87	.839	10	124	134	4.6	75-2	84	94	3	42	451	15.6
2020-21	24-23	753/31.4	127-322	.394	42-116	.362	71-80	.888	17	95	112	4.7	51-2	62	70	3	62	367	15.3
2021-22	32-31	928/29.0	128-275	.465	31-93	.333	82-96	.854	27	74	101	3.2	52-0	95	71	7	35	369	11.5
2022-23	29-18	801/27.6	106-223	.475	35-94	.372	77-84	.917	15	69	84	2.9	50-0	43	49	3	21	324	11.2
2023-24	18-18	526/29.2	86-206	.417	23-76	.303	51-60	.850	12	47	59	3.3	35-1	43	42	2	30	246	13.7
PURDUE	79-67	2255/28.5	320-704	.455	89-263	.338	210-240	.875	54	190	244	3.1	137-1	181	162	12	86	939	11.9
TOTAL	132-119	3958/30.0	612-1418	.432	179-527	.340	354-407	.870	81	409	490	3.7	263-5	327	326	18	190	1757	13.3

ELLIS QUICK HITS

- Saw career-best streak of 27 made free throws come to an end against Southern
- Elected to use fifth year of eligibility for the 2023-24 season
- Two-time All-Big Ten honorable mention
- Shot a career-best 91.7% at the line to finish third in the nation and first in the Big Ten last year, good for third in Purdue history
- Crossed the career 1,000-point plateau in 2021-22
- Mother Libbie sends several ribbons in different colors for her to wear in games
- Father Martin was an Australian Rules Football official who refereed 244 matches in 13 years, including the 2001 Grand Final.
- First Australian in Purdue history

SOPHIE SWANSON 31



Height - 5-10 | **Position** - Guard | **Year** - Freshman | **Major** - Elementary Education
Hometown - Barrington, Ill. | **High School** - Barrington Prep
Instagram - sophieswanson1 | **Twitter** - sophieswanson31 | **TikTok** - sophieswanson1

	Season High	Career High
Points	10, vs. Indiana St., 12/20/23	10, vs. Indiana St., 12/20/23
Rebounds	3, 2x last, vs. SEMO, 12/6/23	3, 2x last, vs. SEMO, 12/6/23
Assists	2, vs. Indiana St., 12/20/23	2, vs. Indiana St., 12/20/23
Steals	1, 3x last, at Maryland, 1/14/24	1, 3x last, at Maryland, 1/14/24
Blocks		
Field Goals	4, 2x last, vs. Wisconsin, 12/30/23	4, 2x last, vs. Wisconsin, 12/30/23
3-Pointers	2, 3x last, at Maryland, 1/14/24	2, 3x last, at Maryland, 1/14/24
Free Throws		
Minutes	16, at Penn State, 1/18/24	16, at Penn State, 1/18/24

SEASON	GP-GS	MIN/AVG	FG-FGA	FG%	3FG-FGA	3FG%	FT-FTA	FT%	OFF	DEF	TOT	AVG	PF-FO	AST	TO	BLK	STL	PTS	AVG
2023-24	11-0	103/9.4	22-51	.431	10-28	.357	5-8	.625	4	11	15	1.4	9-0	4	13	0	3	59	5.4

SWANSON QUICK HITS

- Made career debut against Valparaiso
- Coming off knee injury that ended senior campaign
- 2022 Illinois Miss Basketball and Illinois 4A Player of the Year
- Invited to the U18 USA Team Trials
- Four-time all-state, all-conference and all-area honoree
- Honored as the Barrington Female Athlete of the Year in 2021-22
- Won conference, regional, sectional, super-sectional titles as a junior, reaching the state finals
- Invited to U18 Team USA camp as a junior
- Set the school record for points in a season (750), 3-pointers (86), thrice set the school mark for points in a game (40, 37, 36)

ALAINA HARPER 32



Height - 6-3 | **Position** - Guard | **Year** - Sophomore | **Major** - Biomedical Health
Hometown - Hartland, Wis. | **High School** - Arrowhead | **Previous** - Grand Canyon
Instagram - alaina_harper32 | **Twitter** - alainaharper32

	Season High	Career High
Points	4, vs. SEMO, 12/6/23	18, vs. Lindenwood, 11/26/22*
Rebounds	2, 4x last, at Maryland, 1/14/24	8, vs. Columbia, 12/11/22*
Assists		1, 5x last at Southern Utah, 3/2/23*
Steals		2, vs. Seattle, 2/18/23*
Blocks	1, vs. Indiana St., 12/20/23	1, 4x last, vs. Indiana St., 12/20/23
Field Goals	1, 2x last, vs. Indiana St., 12/20/23	8, vs. Lindenwood, 11/26/22*
3-Pointers		1, 3x last at Southern Utah, 3/2/23*
Free Throws		5, at Southern Utah, 3/2/23*
Minutes	14, vs. USI, 11/26/23	35, vs. Southern Utah, 3/10/23*

SEASON	GP-GS	MIN/AVG	FG-FGA	FG%	3FG-FGA	3FG%	FT-FTA	FT%	OFF	DEF	TOT	AVG	PF-FO	AST	TO	BLK	STL	PTS	AVG
2022-23	29-2	334/11.5	58-102	.569	3-5	.600	26-40	.650	35	29	64	2.2	35-0	5	21	3	3	145	5.0
2023-24	15-0	84/5.6	5-6	.833	0-0	.000	0-0	.000	4	9	13	0.9	8-0	0	7	1	0	10	0.7
TOTAL	44-2	419/9.5	63-108	.583	3-5	.600	26-40	.650	39	38	77	1.8	43-0	5	28	4	3	155	3.5

HARPER QUICK HITS

- Teammates with her sister Caitlyn for the first time
- Transferred to Purdue in May of 2023
- Appeared in 29 games with a pair of starts at Grand Canyon
- Was named WAC Freshman of the Week early in the season
- No. 6 player in Wisconsin by Prep Girls Hoops
- Garnered back-to-back WBCA Division I First Team All-State honors as a junior and senior
- Tabbed the 2022 Wisconsin Sports Network's top post player
- 2021 USA Today High School Sports Awards (Milwaukee) nominee

MADISON LAYDEN 33



Height - 6-1 | **Position** - Guard | **Year** - Senior | **Major** - Selling & Sales Management
Hometown - Kokomo, Ind. | **High School** - Northwestern
Instagram - madison_layden | **Twitter** - madison_layden | **TikTok** - madison_layden

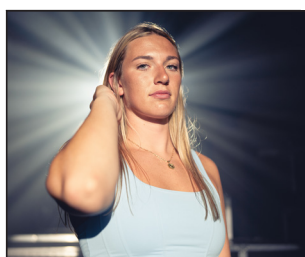
	Season High	Career High
Points	21, vs. Southern, 11/12/23	21, vs. Southern, 11/12/23
Rebounds	6, vs. Iowa, 1/10/24	8 4x last, at Michigan State, 12/4/22
Assists	5, vs. Wisconsin, 12/30/23	7, vs. Michigan State - 1/3/21
Steals	3, 3x last, vs. Wisconsin, 12/30/23	6, at Rutgers, 2/20/22
Blocks	2, vs. Wisconsin, 12/30/23	2 7x last, vs. Wisconsin, 12/30/23
Field Goals	7, 2x last, vs. Rutgers, 1/2/24	8, 2x last vs. Penn State, 2/9/22
3-Pointers	4, 6x last, vs. Wisconsin, 12/30/23	6, at Iowa - 1/18/21
Free Throws	7, vs. Southern, 11/12/23	6, vs. Dayton, 11/20/21
Minutes	36, 2x last, at Minnesota, 12/10/23	44 vs. Indiana, 1/16/22

SEASON	GP-GS	MIN/AVG	FG-FGA	FG%	3FG-FGA	3FG%	FT-FTA	FT%	OFF	DEF	TOT	AVG	PF-FO	AST	TO	BLK	STL	PTS	AVG
2020-21	23-21	729/31.7	70-163	.429	45-111	.405	15-20	.750	12	61	73	3.2	43-0	69	44	5	48	200	8.7
2021-22	29-28	986/34.0	117-337	.347	63-190	.332	40-47	.851	24	110	134	4.6	71-1	80	55	15	49	337	11.6
2022-23	28-13	816/29.2	56-165	.339	34-124	.274	34-38	.895	2	115	117	4.2	72-1	83	53	10	30	180	6.4
2023-24	18-18	532/29.6	64-139	.460	41-85	.482	25-32	.781	8	49	57	3.2	42-0	27	29	12	24	194	10.8
TOTAL	98-80	3064/31.3	307-804	.382	183-510	.359	114-137	.832	46	335	381	3.9	228-2	259	181	42	151	911	9.3

LAYDEN QUICK HITS

- Playing alongside her sister freshman McKenna
- 8th on Purdue's career 3-point list
- Got engaged over the holiday break to Rees Zay, a Purdue graduate and former practice player for the program
- Big Ten All-Freshman (2021), honorable mention (2022)
- One of 12 players to have 30 3-pointers, 30 steals and 65 assists each of the last three seasons
- Invited to the USA Basketball U19 World Cup Trials
- Named to the All-Freshman Team in 2020-21
- Tied freshman record with 7 3pts in a game at Iowa
- First in IHSA history to lead three Final Fours in scoring
- Ranked 13th in IHSA in career scoring and one of 46 2,000-point scorers in state history

CAITLYN HARPER 34



Height - 6-3 | **Position** - Forward | **Year** - Sixth Year | **Major** - Master's Management
Hometown - Hartland, Wisc. | **High School** - Arrowhead | **Previous** - Cal Baptist
Instagram - caitlynharper32 | **Twitter** - C_harp32 | **TikTok** - caitlynharper32

	Season High	Career High	(<i>*prior school</i>)
Points	22, vs. SEMO, 12/6/23	30, at Utah Valley, 1/15/22*	
Rebounds	11, vs. Texas A&M, 11/16/23	14, 3x last, vs. Chicago State*	
Assists	4, 2x last, at Penn State, 1/18/24	5, at UTRGV, 2/13/21*	
Steals	3, at Dayton, 12/1/23	5, at Sam Houston State, 1/27/22*	
Blocks	4, vs. Iowa, 1/10/24	8, at Chicago State, 3/2/22*	
Field Goals	9, vs. SEMO, 12/6/23	12, vs. Utah Valley, 2/26/22	
3-Pointers	2, 3x last, vs. SEMO, 12/6/23	4, vs. Rice, 3/22/21*	
Free Throws	5, vs. Indiana, 1/21/24	10, vs. Sam Houston State, 3/10/22*	
Minutes	38, vs. Indiana, 1/21/24	41, at Chicago State, 3/2/22*	

SEASON	GP-GS	MIN/AVG	FG-FGA	FG%	3FG-FGA	3FG%	FT-FTA	FT%	OFF	DEF	TOT	AVG	PF-FO	AST	TO	BLK	STL	PTS	AVG
2018-19	29-3	470/16.2	100-203	.493	11-52	.212	40-58	.690	36	84	120	4.1	49-0	23	38	21	11	251	8.7
2019-20	5-5	121/24.3	32-56	.571	1-2	.500	16-18	.889	13	32	45	9.0	17-0	7	10	10	2	81	16.2
2020-21	27-10	642/23.8	149-281	.530	27-70	.386	60-76	.789	62	140	202	7.5	67-0	35	50	34	31	385	14.3
2021-22	32-32	964/30.1	223-421	.530	29-95	.305	94-127	.740	36	153	189	5.9	68-0	40	58	51	41	569	17.8
2022-23	30-29	713/23.8	127-232	.547	17-52	.327	41-53	.774	38	78	116	3.9	65-1	18	49	18	18	312	10.4
2023-24	18-18	514/28.6	81-145	.559	15-45	.333	24-28	.857	21	57	78	4.3	32-0	26	28	14	17	201	11.2
PURDUE	48-47	1228/25.6	208-377	.552	32-97	.330	65-81	.802	59	135	194	4.0	97-1	44	77	32	35	513	10.7
TOTAL	141-97	3424/24.3	712-1338	.532	100-316	.316	275-360	.764	206	544	750	5.3	298-1	149	233	148	120	1799	12.8

HARPER QUICK HITS

- Playing with her sister Alaina this season for the first time
- Tallied 1,500th career point against Illinois last year
- Finished third on the team in scoring last season
- One of 11 players from the Big Ten to average double figures and shoot better than 50% in 2022-23
- Transferred to Purdue after spending four seasons at Cal Baptist
- 2022 WAC Player of the Year and CoSIDA All-American
- Played parts of four seasons at Cal Baptist, starting in 2018-19
- Named the 2022 CoSIDA Academic All-America, 2021-22 WAC Player of the Year, 2021 WAC Tournament MVP

2023-24 PURDUE WOMEN'S BASKETBALL GAME NOTES

2 | Rashunda Jones

2023-24	Min.	FG	3FG	FT	O-D-T	PF	Pts	A	To	S	B	+/-
UCLA*	20	2-7	0-2	0-0	0-1-1	3	4	0	1	0	0	-33
Southern	15	1-8	1-3	1-2	0-2-2	3	4	1	4	0	1	4
Texas A&M	23	8-11	0-1	4-6	0-2-2	3	20	0	1	0	1	11
Florida	18	1-6	0-0	2-2	1-4-5	5	4	1	3	1	0	9
Georgia	21	4-8	0-0	2-2	1-4-5	2	10	0	3	1	0	-10
USI	26	6-11	2-4	2-4	1-4-5	2	16	3	3	2	0	22
Dayton	19	3-9	0-1	1-2	0-1-1	2	7	3	3	1	0	5
Valpo	19	6-9	2-3	8-8	0-4-4	1	22	4	2	1	0	29
SEMO	DNP											
Minnesota	DNP											
Notre Dame	DNP											
Indiana State	DNP											
Wisconsin	17	1-7	0-2	2-2	0-1-1	0	4	3	2	0	0	0
Rutgers	17	7-14	2-4	3-3	2-0-2	4	19	3	1	0	0	2
Iowa	11	1-7	1-1	0-0	0-0-0	2	3	0	1	1	0	-14
Maryland	9	0-7	0-3	0-0	2-2-4	3	0	0	0	0	0	-7
Penn State	24	6-13	1-1	10-12	1-2-3	4	23	2	1	2	0	1
Indiana	020	5-11	1-1	2-4	0-3-3	3	13	2	1	0	0	3
MSU												
Ohio State												
Nebraska												
Illinois												
Indiana												
NU												
Nebraska												
MSU												
Wisconsin												
Penn State												
Michigan												

* Started

^Big Ten Tournament

10 | Jeanae Terry

2023-24	Min.	FG	3FG	FT	O-D-T	PF	Pts	A	To	S	B	+/-
UCLA*	30	1-5	0-0	3-4	1-6-7	2	5	4	2	1	0	-23
Southern*	35	1-6	0-0	3-4	1-10-11	0	5	7	2	0	0	15
Texas A&M*	38	2-6	0-0	4-4	1-4-5	2	8	10	3	3	0	9
Florida*	25	0-2	0-0	0-0	2-2-4	0	0	2	0	1	0	-10
Georgia*	26	2-4	0-0	0-1	0-1-1	2	4	4	4	0	0	-9
USI*	18	2-3	0-0	2-2	2-4-6	2	6	8	1	3	1	31
Dayton*	30	0-3	0-0	1-2	1-7-8	0	1	4	3	0	2	5
Valpo*	20	0-1	0-0	3-4	1-6-7	2	3	4	3	2	0	3
SEMO*	28	0-1	0-0	1-2	3-7-10	3	1	11	1	1	1	28
Minnesota*	35	2-6	1-1	2-2	1-14-15	4	7	9	7	2	1	8
Notre Dame*	30	1-5	1-1	2-2	1-3-4	1	5	1	5	1	0	-35
Indiana State*	17	2-3	0-0	0-0	3-2-5	3	4	5	1	0	0	17
Wisconsin*	32	5-9	0-0	3-3	5-7-12	3	13	9	3	3	1	41
Rutgers*	39	3-4	0-0	2-6	5-5-10	3	8	5	3	2	0	-2
Iowa*	28	5-9	0-1	0-0	0-1-1	2	10	4	3	2	0	-12
Maryland*	32	3-6	0-0	1-1	2-3-5	1	87	6	6	2	0	-15
Penn State*	36	0-2	0-0	0-0	1-6-7	4	0	3	3	3	0	-9
Indiana*	37	2-6	0-0	0-0	7-1-8	1	4	6	4	2	0	-2
MSU												
Ohio State												
Nebraska												
Illinois												
Indiana												
NU												
Nebraska												
MSU												
Wisconsin												
Penn State												
Michigan												

* Started

^Big Ten Tournament

3 | Jayla Smith

2023-24	Min.	FG	3FG	FT	O-D-T	PF	Pts	A	To	S	B	+/-
UCLA	17	2-7	0-3	0-0	1-2-3	1	4	0	3	0	0	-23
Southern	DNP											
Texas A&M	20	0-4	0-2	0-0	0-1-1	0	0	1	0	0	1	22
Florida	24	6-10	1-4	0-0	0-5-5	1	13	1	3	0	0	-6
Georgia	17	0-4	0-2	0-0	0-2-2	0	0	0	0	0	0	1
USI	16	4-7	0-2	0-2	0-0-0	3	8	1	2	0	1	17
Dayton	11	2-6	0-0	0-0	3-1-4	0	4	0	2	0	1	4
Valpo	16	3-4	0-1	0-0	0-3-3	2	6	1	2	2	0	19
SEMO	20	2-7	0-1	2-2	0-0-0	1	6	1	0	0	0	-1
Minnesota	14	0-5	0-0	0-0	0-1-1	0	0	1	0	0	0	-11
Notre Dame	16	0-6	0-1	4-4	0-0-0	0	4	1	0	1	1	-11
Indiana State	13	0-4	0-0	2-4	2-0-2	1	2	1	1	0	1	-13
Wisconsin	14	2-5	1-1	1-2	0-1-1	0	6	1	1	2	0	6
Rutgers	7	1-2	0-0	0-0	1-0-1	0	2	0	1	0	0	-4
Iowa	17	4-9	0-2	0-0	1-1-2	1	8	1	0	1	0	-3
Maryland	9	0-0	0-0	1-2	1-0-1	0	1	1	1	0	0	-9
Penn State	10	1-4	1-1	0-0	1-0-1	1	3	0	1	0	0	-6
Indiana	2	0-0	0-0	0-0	0-0-0	0	0	0	1	0	0	0
MSU												
Ohio State												
Nebraska												
Illinois												
Indiana												
NU												
Nebraska												
MSU												
Wisconsin												
Penn State												
Michigan												

* Started

^Big Ten Tournament

11 | McKenna Layden

2023-24	Min.	FG	3FG	FT	O-D-T	PF	Pts	A	To	S	B	+/-
UCLA	15	1-4	1-2	1-2	1-0-1	0	4	0	0	1	0	-25
Southern	19	0-3	0-3	0-0	0-4-4	0	0	2	1	1	0	-5
Texas A&M	10	0-0	0-0	0-0	0-0-0	0	0	0	0	0	0	9
Florida	11	0-0	0-0	0-0	0-1-1	0	0	0	0	0	0	-3
Georgia	4	0-2	0-2	0-0	0-1-1	0	0	0	0	1	0	-2
USI	22	2-4	2-3	2-2	0-6-6	1	8	1	0	1	0	14
Dayton	10	0-1	0-1	0-0	0-3-3	0	0	1	0	0	1	-2
Valpo	18	0-1	0-1	0-0	0-3-3	1	0	1	1	0	0	13
SEMO	14	1-2	1-2	0-0	1-1-2	1	3	0	0	1	0	6
Minnesota	DNP											
Notre Dame	12	2-3	1-1	0-0	0-0-0	2	5	1	0	1	0	-6
Indiana State	7	0-0	0-0	0-0	0-1-1	0	0	0	0	0	0	-8
Wisconsin	11	0-1	0-1	0-0	0-0-0	0	0	1	0	1	0	10
Rutgers	4	0-1	0-0	0-0	1-0-1	0	0	0	0	0	0	-2
Iowa	2	0-0	0-0	0-0	0-0-0	0	0	0	0	0	0	-2
Maryland	11	1-3	1-3	0-0	0-0-0	0	3	2	0	1	0	-8
Penn State	5	0-1	0-1	0-0	0-0-0	0	0	0	1	0	0	4
Indiana	1	0-0	0-0	0-0	0-0-0	0	0	0	0	0	0	0
MSU												
Ohio State												
Nebraska												
Illinois												
Indiana												
NU												
Nebraska												
MSU												
Wisconsin												
Penn State												
Michigan												

* Started

^Big Ten Tournament

2023-24 PURDUE WOMEN'S BASKETBALL GAME NOTES

15 | Mila Reynolds

2023-24	Min.	FG	3FG	FT	O-D-T	PF	Pts	A	To	S	B	+/-
UCLA	5	0-2	0-1	0-0	0-0-0	1	0	1	1	0	0	-14
Southern	4	0-0	0-0	0-0	0-0-0	1	0	0	0	0	0	-4
Texas A&M	DNP											
Florida	DNP											
Georgia	DNP											
USI	DNP											
Dayton	DNP											
Valpo	16	1-2	0-0	4-6	1-4-5	2	6	1	2	2	0	19
SEMO	DNP											
Minnesota	2	0-2	0-1	0-0	0-0-0	0	0	0	0	0	0	-3
Notre Dame	12	1-2	0-1	0-0	0-2-2	3	2	0	3	0	1	-3
Indiana State	15	2-5	1-2	0-0	0-2-2	2	5	0	1	0	0	8
Wisconsin	4	1-1	0-0	0-0	1-0-1	0	2	0	0	0	0	-4
Rutgers	10	1-2	0-0	1-2	0-1-1	1	3	0	0	0	0	0
Iowa	6	1-3	0-1	2-2	0-0-0	2	4	0	1	0	0	-3
Maryland	2	0-0	0-0	0-0	0-0-0	0	0	0	1	0	0	-8
Penn State	1	0-1	0-0	0-0	0-0-0	0	0	0	0	1	0	0
Indiana	DNP											
MSU												
Ohio State												
Nebraska												
Illinois												
Indiana												
NU												
Nebraska												
MSU												
Wisconsin												
Penn State												
Michigan												

* Started

^Big Ten Tournament

21 | Emily Monson

2023-24	Min.	FG	3FG	FT	O-D-T	PF	Pts	A	To	S	B	+/-
UCLA	4	1-1	1-1	1-2	0-0-0	0	4	0	2	1	0	-2
Southern	3	0-0	0-0	0-0	1-0-1	0	0	0	1	0	0	-1
Texas A&M	DNP											
Florida	3	0-1	0-1	0-0	0-0-0	0	0	0	0	0	0	4
Georgia	DNP											
USI	14	0-3	0-0	0-0	0-1-1	1	0	1	0	0	1	-6
Dayton	DNP											
Valpo	8	1-4	1-4	0-0	0-0-0	2	3	4	1	0	0	-1
SEMO	8	0-0	0-0	0-0	1-3-4	2	0	2	2	0	0	-6
Minnesota	DNP											
Notre Dame	4	0-1	0-0	0-0	0-0-0	1	0	0	0	0	0	2
Indiana State	8	1-3	1-2	0-0	0-1-1	3	3	1	0	0	0	-6
Wisconsin	3	0-2	0-1	0-0	0-0-0	1	0	0	0	0	0	-1
Rutgers	DNP											
Iowa	DNP											
Maryland	3	1-1	0-0	0-0	0-1-1	0	2	0	0	0	0	-2
Penn State	2	0-0	0-0	0-0	0-0-0	1	0	0	0	0	0	-1
Indiana	DNP											
MSU												
Ohio State												
Nebraska												
Illinois												
Indiana												
NU												
Nebraska												
MSU												
Wisconsin												
Penn State												
Michigan												

* Started

^Big Ten Tournament

20 | Mary Ashley Stevenson

2023-24	Min.	FG	3FG	FT	O-D-T	PF	Pts	A	To	S	B	+/-
UCLA	27	3-5	0-1	2-2	2-0-2	3	8	2	3	1	1	-25
Southern*	28	5-9	0-1	3-3	1-4-5	2	13	0	4	0	1	22
Texas A&M*	9	1-3	0-0	0-0	2-1-3	3	2	0	0	0	0	-1
Florida*	26	2-8	0-2	2-4	4-2-6	3	6	0	0	0	1	2
Georgia*	32	4-11	0-1	3-3	2-1-3	1	11	2	3	1	0	-12
USI*	26	3-5	0-0	6-7	0-1-1	3	12	1	1	1	0	26
Dayton*	32	3-8	0-1	2-3	2-5-7	1	8	2	3	1	0	11
Valpo*	27	5-8	0-0	4-6	2-8-10	3	14	1	3	0	2	20
SEMO*	29	4-11	0-0	3-5	2-5-7	1	11	2	2	0	1	28
Minnesota*	36	3-12	1-5	1-2	2-9-11	3	8	0	2	0	1	1
Notre Dame*	32	2-10	0-1	1-2	2-4-6	3	5	0	2	1	0	-28
Indiana State	31	5-9	0-1	1-3	2-6-8	1	11	2	2	1	0	15
Wisconsin*	28	5-13	0-2	3-3	5-3-8	2	13	1	1	1	0	36
Rutgers*	23	3-9	0-1	1-2	2-4-6	3	7	2	1	1	0	5
Iowa*	33	3-6	0-1	2-2	1-2-3	3	8	0	2	0	0	-18
Maryland*	31	3-9	0-0	2-2	1-2-3	2	8	1	4	0	0	-12
Penn State*	35	3-11	0-1	7-8	4-3-7	2	13	1	3	2	1	-12
Indiana*	30	6-13	0-0	1-1	1-1-2	2	13	1	2	2	0	-12
MSU												
Ohio State												
Nebraska												
Illinois												
Indiana												
NU												
Nebraska												
MSU												
Wisconsin												
Penn State												
Michigan												

* Started

^Big Ten Tournament

23 | Abbey Ellis

2023-24	Min.	FG	3FG	FT	O-D-T	PF	Pts	A	To	S	B	+/-
UCLA*	22	4-8	0-3	2-2	0-2-2	0	10	0	4	1	0	-9
Southern*	28	3-11	1-6	7-9	0-4-4	3	14	4	3	3	0	14
Texas A&M*	34	9-18	2-4	0-0	0-0-0	2	20	2	1	1	0	8
Florida*	36	3-13	1-9	7-7	0-5-5	4	14	1	4	3	0	-4
Georgia*	30	4-12	1-4	2-2	3-3-6	1	11	1	4	0	0	-2
USI*	21	7-11	1-3	4-4	1-5-6	2	19	7	1	1	0	38
Dayton*	34	5-13	3-6	8-10	1-1-2	2	21	0	1	1	0	10
Valpo*	26	5-11	1-4	0-0	1-3-4	2	11	2	3	1	0	11
SEMO*	27	4-9	2-5	3-3	2-1-3	2	13	1	2	2	0	22
Minnesota*	39	4-9	1-2	1-2	0-3-3	0	10	1	2	3	0	-3
Notre Dame*	31	4-14	0-3	0-0	0-2-2	2	8	2	4	2	0	-35
Indiana State*	33	9-13	3-4	9-11	1-2-3	2	28	3	5	4	1	24
Wisconsin*	20	5-9	2-4	0-1	0-5-5	5	12	3	2	1	0	23
Rutgers*	31	5-12	1-3	2-2	1-2-3	2	13	2	1	0	1	-2
Iowa*	37	5-11	1-4	4-4	1-2-3	2	15	6	2	5	0	-22
Maryland*	29	4-10	1-3	1-2	0-2-2	1	10	4	2	1	0	-9
Penn State*	17	3-10	1-5	0-0	0-1-1	2	7	1	1	0	0	0
Indiana*	35	4-12	1-4	1-1	1-4-5	1	10	3	0	1	0	-3
MSU												
Ohio State												
Nebraska												
Illinois												
Indiana												
NU												
Nebraska												
MSU												
Wisconsin												
Penn State												
Michigan												

* Started

^Big Ten Tournament



2023-24 PURDUE WOMEN'S BASKETBALL GAME NOTES

31 | Sophie Swanson

2023-24	Min.	FG	3FG	FT	O-D-T	PF	Pts	A	To	S	B	+/-
UCLA	DNP											
Southern	DNP											
Texas A&M	DNP											
Florida	DNP											
Georgia	DNP											
USI	8	1-3	0-2	0-0	0-2-2	0	2	0	1	0	0	-8
Dayton	DNP											
Valpo	9	3-6	2-4	0-0	1-2-3	1	8	0	1	1	0	3
SEMO	7	3-8	1-5	0-0	1-2-3	1	7	0	0	1	0	-1
Minnesota	DNP											
Notre Dame	12	1-5	1-3	0-0	0-2-2	0	3	1	1	0	0	-1
Indiana State	15	4-6	2-3	0-0	1-1-2	2	10	2	3	0	0	9
Wisconsin	11	4-6	1-3	0-0	0-1-1	2	9	0	2	0	0	16
Rutgers	9	2-5	0-2	6-8	0-0-0	1	6	0	1	0	0	0
Iowa	5	0-2	0-0	0-0	0-0-0	0	0	0	0	0	0	-3
Maryland	12	3-6	2-4	0-0	0-0-0	2	8	1	1	1	0	-12
Penn State	16	1-4	1-3	3-4	1-0-1	0	6	0	2	0	0	-9
Indiana	2	0-0	0-0	0-0	0-0-0	0	0	0	1	0	0	-2
MSU												
Ohio State												
Nebraska												
Illinois												
Indiana												
NU												
Nebraska												
MSU												
Wisconsin												
Penn State												
Michigan												

* Started

^Big Ten Tournament

33 | Madison Layden

2023-24	Min.	FG	3FG	FT	O-D-T	PF	Pts	A	To	S	B	+/-
UCLA*	28	0-3	0-2	0-0	0-1-1	0	0	1	1	0	0	-33
Southern*	36	5-6	4-5	7-8	1-3-4	4	21	2	1	3	0	17
Texas A&M*	27	2-8	1-5	3-4	1-4-5	3	8	0	2	2	1	-2
Florida*	23	0-5	0-3	0-0	0-2-2	1	0	0	2	0	0	-7
Georgia*	32	5-12	4-8	0-0	0-2-2	4	14	1	2	1	0	2
USI*	19	6-6	4-4	0-0	0-2-2	2	16	0	1	0	1	21
Dayton*	32	3-5	3-5	4-4	0-5-5	1	13	2	3	2	1	4
Valpo*	32	4-10	2-7	0-0	0-4-4	0	10	2	0	3	1	22
SEMO*	30	6-12	4-8	0-1	0-2-2	2	16	1	0	2	1	24
Minnesota*	37	6-8	4-6	1-2	0-1-1	2	17	1	6	1	0	-3
Notre Dame*	23	1-6	0-2	0-0	1-2-3	2	2	2	4	1	1	-26
Indiana State*	34	3-8	3-7	2-2	2-3-5	1	11	3	0	2	1	20
Wisconsin*	30	5-7	4-5	0-0	1-3-4	3	14	5	0	3	2	39
Rutgers*	33	7-14	2-4	3-3	2-0-2	4	19	3	1	0	0	2
Iowa*	32	2-5	1-2	5-6	0-6-6	3	10	1	2	0	1	-32
Maryland*	30	5-12	3-5	0-0	0-3-3	3	13	2	1	2	1	-18
Penn State*	21	0-4	0-3	0-0	0-4-4	3	0	0	2	1	1	-21
Indiana*	35	4-8	2-4	0-2	0-2-2	4	10	1	1	1	0	-8
MSU												
Ohio State												
Nebraska												
Illinois												
Indiana												
NU												
Nebraska												
MSU												
Wisconsin												
Penn State												
Michigan												

* Started

^Big Ten Tournament

32 | Alaina Harper

2023-24	Min.	FG	3FG	FT	O-D-T	PF	Pts	A	To	S	B	+/-
UCLA	3	0-0	0-0	0-0	0-0-0	1	0	0	0	0	0	-3
Southern	2	0-0	0-0	0-0	0-0-0	0	0	0	0	0	0	2
Texas A&M	3	0-0	0-0	0-0	0-1-1	1	0	0	1	0	0	1
Florida	2	0-0	0-0	0-0-0	0	0	0	0	0	0	0	0
Georgia	11	0-0	0-0	0-0	0-1-1	0	0	0	1	0	0	-5
USI	14	1-1	0-0	0-0	2-0-2	0	2	0	0	0	0	4
Dayton	6	0-0	0-0	0-0	0-1-1	1	0	0	1	0	0	-10
Valpo	DNP											
SEMO	10	2-2	0-0	0-0	1-1-2	0	4	0	0	0	0	-4
Minnesota	6	0-0	0-0	0-0	0-0-0	1	0	0	1	0	0	-3
Notre Dame	5	0-0	0-0	0-0	0-1-1	0	0	0	0	0	0	-7
Indiana State	10	1-2	0-0	0-0	0-1-1	3	2	0	2	0	1	-6
Wisconsin	5	0-0	0-0	0-0	0-2-2	0	0	0	0	0	0	-3
Rutgers	2	0-0	0-0	0-0	0-0-0	0	0	0	0	0	0	-2
Iowa	DNP											
Maryland	5	0-0	0-0	0-0	1-1-2	1	0	0	0	0	0	-1
Penn State	2	1-1	0-0	0-0	0-0-0	0	2	0	1	0	0	2
Indiana	DNP											
MSU												
Ohio State												
Nebraska												
Illinois												
Indiana												
NU												
Nebraska												
MSU												
Wisconsin												
Penn State												
Michigan												

* Started

^Big Ten Tournament

34 | Caitlyn Harper

2023-24	Min.	FG	3FG	FT	O-D-T	PF	Pts	A	To	S	B	+/-
UCLA*	31	3-8	2-6	2-2	0-2-2	2	10	0	1	1	1	-25
Southern*	32	5-8	0-2	0-0	1-6-7	3	10	3	4	0	0	21
Texas A&M*	37	5-8	2-3	2-2	3-8-11	0	14	1	1	1	0	13
Florida*	36	6-12	0-3	0-0	0-5-5	1	12	0	1	1	0	0
Georgia*	31	2-4	1-2	2-2	2-2-4	3	7	0	0	2	1	-3
USI*	18	2-5	0-1	2-2	2-2-4	0	6	2	0	1	0	31
Dayton*	27	6-10	1-1	0-0	0-4-4	4	13	1	0	3	1	13
Valpo*	12	0-1	0-0	0-0	0-0-0	0	0	0	4	0	0	-4
SEMO*	29	9-13	2-4	2-4	1-4-5	0	22	1	2	1	1	28
Minnesota*	32	7-11	0-2	2-2	0-3-3	4	16	4	1	1	2	4
Notre Dame*	26	2-5	1-2	0-0	0-2-2	1	5	0	1	1	0	-35
Indiana State*	19	1-4	1-3	0-0	1-2-3	3	3	3	1	1	1	20
Wisconsin*	27	7-8	1-1	1-2	1-1-2	1	16	0	1	1	0	32
Rutgers*	28	4-9	1-2	0-0	3-2-5	4	9	1	2	0	0	3
Iowa*	32	4-10	2-8	3-3	2-2-4	3	13	3	0	0	4	-16
Maryland*	31	7-10	0-1	0-0	1-2-3	0	14	1	2	1	1	-16
Penn State*	34	5-8	0-0	3-3	2-6-8	3	13	4	4	1	1	-14
Indiana*	38	6-11	1-4	5-6	2-4-6	0	18	2	3	1	1	-6
MSU												
Ohio State												
Nebraska												
Illinois												
Indiana												
NU												
Nebraska												
MSU												
Wisconsin												
Penn State												
Michigan												

* Started

^Big Ten Tournament





2023-24 Purdue Women's Basketball Combined Team Statistics All games

Page 1/1
as of Jan 22, 2024

Game Records

Record	Overall	Home	Away	Neutral
ALL GAMES	9-9	8-2	1-5	0-2
CONFERENCE	2-5	2-2	0-3	0-0
NON-CONFERENCE	7-4	6-0	1-2	0-2

Score by Periods

Team	1st	2nd	3rd	4th	OT	TOT
Purdue	328	269	346	293	0	1236
Opponents	292	281	302	334	0	1209

Team Box Score

No.	Player				Total		3-Point		F-Throw		Rebounds													
		GP-GS	MIN	AVG	FG-FGA	FG%	3FG-3FGA	3FG%	FT-FTA	FT%	OFF	DEF	TOT	AVG	PF	DQ	A	TO	BLK	STL	PTS	AVG		
23	ELLIS, Abbey	18-18	525:52	29.2	86-206	.417	23-76	.303	51-60	.850	12	47	59	3.3	35	1	43	42	2	30	246	13.7		
34	HARPER, Caitlyn	18-18	514:12	28.6	81-145	.559	15-45	.333	24-28	.857	21	57	78	4.3	32	0	26	28	14	17	201	11.2		
33	LAYDEN, Madison	18-18	532:18	29.6	64-139	.460	41-85	.482	25-32	.781	8	49	57	3.2	42	0	27	29	12	24	194	10.8		
2	JONES, Rashunda	14-0	255:16	18.2	46-119	.387	8-24	.333	40-52	.769	6	30	36	2.6	34	1	22	25	2	9	140	10.0		
20	STEVENSON , Mary Ashley	18-17	509:02	28.3	63-160	.394	1-18	.056	44-58	.759	37	61	98	5.4	41	0	18	38	8	12	171	9.5		
31	SWANSON, Sophie	11-0	103:19	9.4	22-51	.431	10-28	.357	5-8	.625	4	11	15	1.4	9	0	4	13	0	3	59	5.4		
10	TERRY, Jeanae	18-18	531:19	29.5	31-81	.383	2-3	.667	27-37	.730	37	89	126	7.0	35	0	102	54	6	28	91	5.1		
3	SMITH, Jayla	17-1	242:14	14.2	27-84	.321	3-20	.150	10-16	.625	10	17	27	1.6	11	0	11	18	5	6	67	3.9		
15	REYNOLDS, Mila	11-0	77:13	7.0	7-20	.350	1-6	.167	7-9	.778	2	9	11	1.0	12	0	2	8	1	1	22	2.0		
11	LAYDEN, McKenna	17-0	168:53	9.9	7-26	.269	6-20	.300	3-4	.750	3	20	23	1.4	5	0	9	3	1	8	23	1.4		
21	MONSON, Emily	11-0	56:00	5.1	4-16	.250	3-9	.333	1-2	.500	2	6	8	0.7	11	0	8	6	1	1	12	1.1		
32	HARPER, Alaina	15-0	84:21	5.6	5-6	.833	0-0	.000	0-0	.000	4	9	13	0.9	8	0	0	7	1	0	10	0.7		
Team											47	38	85					10						
Total		18	3600		443-1053	.421	113-334	.338	237-306	.775	193	443	636	35.3	275	2	272	281	53	139	1236	68.7		
Opponents		18	3600		445-1068	.417	113-321	.352	206-266	.774	192	439	631	35.1	313	5	234	294	63	139	1209	67.2		

Team Statistics

	PURDUE	OPP
Scoring	1236	1209
Points per game	68.7	67.2
Scoring margin	+1.5	-
Field goals-att	443-1053	445-1068
Field goal pct	.421	.417
3 point fg-att	113-334	113-321
3-point FG pct	.338	.352
3-pt FG made per game	6.3	6.3
Free throws-att	237-306	206-266
Free throw pct	.775	.774
F-Throws made per game	13.2	11.4
Rebounds	636	631
Rebounds per game	35.3	35.1
Rebounding margin	+0.3	-
Assists	272	234
Assists per game	15.1	13.0
Turnovers	281	294
Turnovers per game	15.6	16.3
Turnover margin	+0.7	-
Assist/turnover ratio	1.0	0.8
Steals	139	139
Steals per game	7.7	7.7
Blocks	53	63
Blocks per game	2.9	3.5
Winning streak	0	-
Home win streak	0	-
Attendance	65277	32513
Home games-Avg/Game	10-6528	6-5419
Neutral site-Avg/Game	-	2-358

Team Results

Date	Opponent		Score	Att.
11/06/2023	at UCLA	L	49-92	6783
11/12/2023	Southern U.	W	67-50	5002
11/16/2023	Texas A&M	W	72-58	5223
11/20/2023	vs Florida	L	49-52	437
11/22/2023	vs Georgia	L	57-65	278
11/26/2023	Southern Ind.	W	95-57	3683
12/01/2023	at Dayton	W	67-59	3250
12/03/2023	Valparaiso	W	83-56	5305
12/06/2023	Southeast Mo. St.	W	83-57	3412
12/10/2023	at Minnesota	L	58-60	3834
12/17/2023	at Notre Dame	L	39-76	9149
12/20/2023	Indiana St.	W	79-63	7177
12/30/2023	Wisconsin	W	89-50	5540
01/02/2024	Rutgers	W	77-76	3263
01/10/2024	Iowa	L	71-96	14876
01/14/2024	at Maryland	L	66-88	7231
01/18/2024	at Penn St.	L	67-80	2266
01/21/2024	Indiana	L	68-74	11796



2023-24 Purdue Women's Basketball Combined Team Statistics In Conference games

Page 1/1
as of Jan 22, 2024

Game Records

Record	Overall	Home	Away	Neutral
ALL GAMES	2-5	2-2	0-3	0-0
CONFERENCE	2-5	2-2	0-3	0-0
NON-CONFERENCE	0-0	0-0	0-0	0-0

Score by Periods

Team	1st	2nd	3rd	4th	OT	TOT
Purdue	134	97	144	121	0	496
Opponents	121	129	128	146	0	524

Team Box Score

No. Player					Total		3-Point		F-Throw		Rebounds													
		GP-GS	MIN	AVG	FG-FGA	FG%	3FG-3FGA	3FG%	FT-FTA	FT%	OFF	DEF	TOT	AVG	PF	DQ	A	TO	BLK	STL	PTS	AVG		
34	HARPER, Caitlyn	7-7	220:36	31.5	40-67	.597	5-18	.278	14-16	.875	11	20	31	4.4	15	0	15	13	9	5	99	14.1		
33	LAYDEN, Madison	7-7	216:44	31.0	29-58	.500	16-29	.552	9-13	.692	3	19	22	3.1	22	0	13	13	5	8	83	11.9		
23	ELLIS, Abbey	7-7	205:48	29.4	30-73	.411	8-25	.320	9-12	.750	3	19	22	3.1	13	1	20	10	1	11	77	11.0		
20	STEVENSON , Mary Ashley	7-7	213:46	30.5	26-73	.356	1-10	.100	17-20	.850	16	24	40	5.7	17	0	6	15	2	6	70	10.0		
2	JONES, Rashunda	6-0	96:26	16.1	15-50	.300	3-10	.300	20-26	.769	3	8	11	1.8	13	0	10	5	0	3	53	8.8		
10	TERRY, Jeanae	7-7	236:44	33.8	20-42	.476	1-2	.500	8-12	.667	21	37	58	8.3	18	0	42	29	2	16	49	7.0		
31	SWANSON, Sophie	6-0	53:44	9.0	10-23	.435	4-11	.364	5-8	.625	1	2	3	0.5	5	0	1	7	0	1	29	4.8		
3	SMITH, Jayla	7-0	72:45	10.4	8-25	.320	2-4	.500	2-4	.500	4	3	7	1.0	2	0	4	5	0	3	20	2.9		
15	REYNOLDS, Mila	6-0	25:39	4.3	3-9	.333	0-2	.000	3-3	1.000	1	1	2	0.3	3	0	0	2	0	1	9	1.5		
21	MONSON, Emily	3-0	06:58	2.3	1-3	.333	0-1	.000	0-0	.000	0	1	1	0.3	2	0	0	0	0	0	2	0.7		
11	LAYDEN, McKenna	6-0	31:15	5.2	1-6	.167	1-5	.200	0-0	.000	1	0	1	0.2	0	0	3	1	0	2	3	0.5		
32	HARPER, Alaina	5-0	19:35	3.9	1-1	1.000	0-0	.000	0-0	.000	1	3	4	0.8	2	0	0	2	0	0	2	0.4		
Team											21	13	34					1						
Total		7	1400		184-430	.428	41-117	.350	87-114	.763	86	150	236	33.7	112	1	114	103	19	56	496	70.9		
Opponents		7	1400		190-405	.469	57-140	.407	87-107	.813	63	171	234	33.4	118	3	108	111	26	45	524	74.9		

Team Statistics

	PURDUE	OPP
Scoring	496	524
Points per game	70.9	74.9
Scoring margin	-4.0	-
Field goals-att	184-430	190-405
Field goal pct	.428	.469
3 point fg-att	41-117	57-140
3-point FG pct	.350	.407
3-pt FG made per game	5.9	8.1
Free throws-att	87-114	87-107
Free throw pct	.763	.813
F-Throws made per game	12.4	12.4
Rebounds	236	234
Rebounds per game	33.7	33.4
Rebounding margin	+0.3	-
Assists	114	108
Assists per game	16.3	15.4
Turnovers	103	111
Turnovers per game	14.7	15.9
Turnover margin	+1.1	-
Assist/turnover ratio	1.1	1.0
Steals	56	45
Steals per game	8.0	6.4
Blocks	19	26
Blocks per game	2.7	3.7
Winning streak	0	-
Home win streak	0	-
Attendance	35475	13331
Home games-Avg/Game	4-8869	3-4444
Neutral site-Avg/Game	-	0-0

Team Results

Date	Opponent		Score	Att.
12/10/2023	at Minnesota	L	58-60	3834
12/30/2023	Wisconsin	W	89-50	5540
01/02/2024	Rutgers	W	77-76	3263
01/10/2024	Iowa	L	71-96	14876
01/14/2024	at Maryland	L	66-88	7231
01/18/2024	at Penn St.	L	67-80	2266
01/21/2024	Indiana	L	68-74	11796



2023-24 PURDUE WOMEN'S BASKETBALL GAME NOTES



Official Basketball Box Score - Final

Indiana at Purdue

01/21/24 Mackey Arena, West Lafayette
2023-24 Women's Basketball

Game Time: 2:00 PM

Game Duration: 2:00

Attendance: 11,796

Officials: Cameron Inouye, Mark Resch, Jeff Cross

Indiana - 74

Record: 16-2 (7-1)

NO.	Name	Min	FG	3P	FT	Rebounds	Fouls	TP	AS	TO	ST	Blocks	+/-
			M-A	M-A	M-A	OR DR TOT	PF FD					BS BA	
54	Mackenzie Holmes	F 33:36	6-7	1-1	2-2	2 4 6	4 2	15	2	5	1	2 0	3
1	Lexus Bargesser	G 33:53	0-2	0-0	0-0	0 3 3	2 2	0	3	2	1	1 0	13
12	Yarden Garzon	G 35:48	5-9	5-8	2-3	0 1 1	3 1	17	2	8	4	1 0	3
14	Sara Scalia	G 40:00	7-15	6-9	0-0	1 3 4	1 2	20	3	0	0	0 0	6
22	Chloe Moore-McNeil	G 40:00	7-14	3-5	3-3	1 2 3	0 4	20	4	2	2	2 1	6
5	Lenée Beaumont	04:09	1-1	0-0	0-0	0 0 0	1 0	2	0	0	0	0 0	-3
20	Julianna LaMendola	06:10	0-1	0-0	0-0	0 2 2	0 0	0	0	1	0	0 0	-1
52	Lilly Meister	06:24	0-0	0-0	0-0	0 2 2	1 0	0	1	0	0	0 0	3
Team						1 4 5		0		0			
Totals			26-49	15-23	7-8	5 21 26	12 11	74	15	18	8	6 1	6

Technical Fouls::NONE

Shooting By Period			
1 st FG%	7-12	58.3%	
3PT%	5-6	83.3%	
FT%	3-4	75%	
2 nd FG%	6-17	35.3%	
3PT%	4-6	66.7%	
FT%	1-1	100%	
3 rd FG%	5-10	50.0%	
3PT%	1-5	20.0%	
FT%	1-1	100%	
4 th FG%	8-10	80.0%	
3PT%	5-6	83.3%	
FT%	2-2	100%	
GM FG%	26-49	53.1%	
3PT%	15-23	65.2%	
FT%	7-8	87.5%	

Dead Ball Rebounds: 1, 1

Purdue - 68

Record: 9-9 (2-5)

NO.	Name	Min	FG	3P	FT	Rebounds	Fouls	TP	AS	TO	ST	Blocks	+/-
			M-A	M-A	M-A	OR DR TOT	PF FD					BS BA	
20	Mary Ashley Stevenson	F 30:11	6-13	0-0	1-1	1 1 2	2 1	13	1	2	2	0 0	-12
34	Caitlyn Harper	F 37:30	6-11	1-4	5-6	2 4 6	0 3	18	2	3	1	1 1	-6
10	Jeanae Terry	G 37:07	2-6	0-0	0-0	7 1 8	1 0	4	6	4	2	0 1	-2
23	Abbey Ellis	G 34:41	4-12	1-4	1-1	1 4 5	1 2	10	3	0	1	0 1	-3
33	Madison Layden	G 35:01	4-8	2-4	0-2	0 2 2	4 3	10	1	1	1	0 0	-8
2	Rashunda Jones	20:08	5-11	1-1	2-4	0 3 3	3 3	13	2	1	0	0 3	3
31	Sophie Swanson	02:10	0-0	0-0	0-0	0 0 0	0 0	0	0	1	0	0 0	-2
3	Jayla Smith	02:23	0-0	0-0	0-0	0 0 0	0 0	0	0	1	0	0 0	0
11	McKenna Layden	00:49	0-0	0-0	0-0	0 0 0	0 0	0	0	0	0	0 0	0
Team						3 3 6		0		0			
Totals			27-61	5-13	9-14	14 18 32	11 12	68	15	13	7	1 6	-6

Technical Fouls::NONE

Shooting By Period			
1 st FG%	12-19	63.2%	
3PT%	3-4	75.0%	
FT%	2-2	100%	
2 nd FG%	3-11	27.3%	
3PT%	0-1	0.0%	
FT%	2-2	100%	
3 rd FG%	6-15	40.0%	
3PT%	2-7	28.6%	
FT%	3-5	60%	
4 th FG%	6-16	37.5%	
3PT%	0-1	0.0%	
FT%	2-5	40%	
GM FG%	27-61	44.3%	
3PT%	5-13	38.5%	
FT%	9-14	64.3%	

Dead Ball Rebounds: 3, 0

	IND	PUR
Biggest lead	10 (4 th 1:10)	9 (1 st 1:18)
Best Scoring Run	10 (3 rd 3:09)	10 (3 rd 0:00)
Lead Changes	12	
Times Tied	7	
Time with Lead	21:11	14:53

Points from	IND	PUR
Turnovers	15	13
Paint	18	30
Second Chance	9	13
Fast Breaks	2	4
Bench	2	13

Period by Period Scoring					
	1st	2nd	3rd	4th	TOT
IND	22	17	12	23	74
PUR	29	8	17	14	68



2023-24 PURDUE WOMEN'S BASKETBALL GAME NOTES



PURDUE BOILERMAKERS

Overall - 9-9 | BIG - 2-5 | Streak - L4 | AP - - | Coaches - - | NET - 80 | Home - 8-2 | Away - 1-5 | Neutral - 0-2 | Post - 0-0
 Offense - 68.7 | Defense - 67.2 | Scoring Margin - 1.5 | Field Goal% - .421 | Field Goal% Defense - .417 | 3-Pt.%(PG) - .338 (6.3)
 Opp 3-Pt.%(PG) - .352 (6.3) | FT %(PG) - .775 (13.2) | Rebounding - 35.3 | Rebound Margin - 0.3 | Assists - 15.1 | Turnovers - 15.6 | TO Margin - 0.7

2023-24 SCHEDULE

Opponent	Date/Result
Quincy (ex)	W, 106-45
at #4 UCLA	L, 92-49
Southern	W, 67-50
Texas A&M	W, 72-58
vs. Florida (1)	L, 52-49
vs. Georgia (1)	L, 65-57
Southern Indiana	W, 95-57
Dayton	W, 67-59
Valparaiso	W, 83-56
SEMO	W, 83-57
at Minnesota	L, 60-58
at Notre Dame	L, 76-39
Indiana State	W, 79-63
Wisconsin	W, 89-50
Rutgers	W, 77-76
Iowa	L, 96-71
at Maryland	L, 88-66
at Penn State	L, 80-67
Indiana	L, 74-68
at Michigan State	Jan. 24
Ohio State	Jan. 28
at Nebraska	Jan. 31
Illinois	Feb. 5
at Indiana	Feb. 11
at Northwestern	Feb. 14
Nebraska	Feb. 17
Michigan State	Feb. 21
at Wisconsin	Feb. 25
Penn State	Feb. 28
at Michigan	March 3
Big Ten Tournament	March 6-10

- 1 - Baha Mar Pink Flamingo Championship (The Bahamas)
 2 - BIG Tournament (Minneapolis)

HEAD COACH KATIE GEARLDS

Purdue Record - 45-35 (2nd)
 Career Record - 273-85 (10th)
 Alma Mater - Purdue '07
 Highlights - 2x NAIA National Champ, 3x NAIA Coach of the Year, 8 years at Marian, 7th Overall to Seattle in 2007 Draft, Legend of Mackey, 2007 All-America

COACHING STAFF

Asso. Head Coach Kelly Komara
 Assistant Coach Mark Stephens
 Assistant Coach Alex Guyton

PRONUNCIATIONS

1 - Amiyah Reynolds ah-MY-yah
 2 - Rashunda Jones ra-SHUN-da
 15 - Mila Reynolds MEE-la
 32 - Alaina Harper ah-LAY-na
 Katie Gearlds soft g
 (like the first name)
 Kelly Komara kom-AIR-ah

1 • Amiyah Reynolds • Fr. • G • 6-1 • South Bend, Ind • South Bend Washington

GP/GS	MIN.	PPG	RPG	APG	STLS	BLKS	FG%	3P%	FT%
-	-	-	-	-	-	-	-	-	-

LAST GAME: Out for the year due to high school injury, running the scout team

2 • Rashunda Jones • Fr. • G • 5-8 • South Bend, Ind. • South Bend Washington

GP/GS	MIN.	PPG	RPG	APG	STLS	BLKS	FG%	3P%	FT%
14/0	18.2	10.0	2.6	1.6	0.6	0.1	.387	.333	.769

LAST GAME: 13 pts, 3 rebs, 2 asts, 20 mins

3 • Jayla Smith • Jr. • G • 6-0 • Indianapolis, Ind. • Lawrence North

GP/GS	MIN.	PPG	RPG	APG	STLS	BLKS	FG%	3P%	FT%
17/1	14.2	3.9	1.6	0.6	0.4	0.3	.321	.150	.625

LAST GAME: 2 mins

10 • Jeanae Terry • 5th • G • 5-11 • Detroit, Mich. • Wayne Memorial • Illinois

GP/GS	MIN.	PPG	RPG	APG	STLS	BLKS	FG%	3P%	FT%
18/18	29.5	5.1	7.0	5.7	1.6	0.3	.383	.667	.730

LAST GAME: 4 pts, 8 rebs, 6 asts, 2 stls, 37 mins

11 • McKenna Layden • Fr. • G • 6-2 • Kokomo, Ind. • Northwestern

GP/GS	MIN.	PPG	RPG	APG	STLS	BLKS	FG%	3P%	FT%
17/0	9.9	1.4	1.4	0.5	0.5	0.1	.269	.300	.750

LAST GAME: 1 min

15 • Mila Reynolds • So. • F • 6-3 • South Bend, Ind. • South Bend Washington • Maryland

GP/GS	MIN.	PPG	RPG	APG	STLS	BLKS	FG%	3P%	FT%
11/0	7.0	2.0	1.0	0.2	0.1	0.1	.350	.167	.778

LAST GAME: Did not play

20 • Mary Ashley Stevenson • Fr. • F • 6-2 • New York City, N.Y. • The Dalton School

GP/GS	MIN.	PPG	RPG	APG	STLS	BLKS	FG%	3P%	FT%
18/17	28.3	9.5	5.4	1.0	0.7	0.4	.394	.056	.759

LAST GAME: 13 pts, 2 rebs, 1 ast, 2 stls, 30 min

21 • Emily Monson • Fr. • G • 6-1 • Murfreesboro, Tenn. • Blackman

GP/GS	MIN.	PPG	RPG	APG	STLS	BLKS	FG%	3P%	FT%
11/0	5.1	1.1	0.7	0.7	0.1	0.1	.250	.333	.500

LAST GAME: Did not play

23 • Abbey Ellis • 5th • G • 5-6 • Melbourne, Australia • Our Lady of Mercy • Cal Poly

GP/GS	MIN.	PPG	RPG	APG	STLS	BLKS	FG%	3P%	FT%
18/18	29.2	13.7	3.3	2.4	1.7	0.1	.417	.303	.850

LAST GAME: 10 pts, 5 rebs, 3 asts, 1 stl, 35 mins

31 • Sophie Swanson • Fr. • 5-10 • Barrington, Ill. • Barrington Prep

GP/GS	MIN.	PPG	RPG	APG	STLS	BLKS	FG%	3P%	FT%
11/0	9.4	5.4	1.4	0.4	0.3	0.0	.431	.357	.625

LAST GAME: 2 mins

32 • Alaina Harper • So. • F • 6-3 • Hartland, Wis. • Arrowhead • Grand Canyon

GP/GS	MIN.	PPG	RPG	APG	STLS	BLKS	FG%	3P%	FT%
15/0	5.6	0.7	0.9	0.0	0.0	0.1	.833	.000	.000

LAST GAME: Did not play

33 • Madison Layden • Jr. • G • 6-1 • Kokomo, Ind. • Northwestern

GP/GS	MIN.	PPG	RPG	APG	STLS	BLKS	FG%	3P%	FT%
18/18	29.6	10.8	3.2	1.5	1.3	0.7	.460	.482	.781

LAST GAME: 10 pts, 2 rebs, 1 ast, 1 stl, 2 3pt, 35 mins

34 • Caitlyn Harper • R-Sr. • F • 6-2 • Hartland, Wisc. • Arrowhead • Cal Baptist

GP/GS	MIN.	PPG	RPG	APG	STLS	BLKS	FG%	3P%	FT%
18/18	28.6	11.2	4.3	1.4	0.9	0.8	.559	.333	.857

LAST GAME: 18 pts, 6 rebs, 2 asts, 1 stl, 1 blk, 38 mins

• Will miss the season due to a senior-year injury

• Won 2022 3A Championship with her sister Mila and teammate Rashunda Jones
 • No. 43 player by ESPN HoopGurlz
 • Ended career ranked second in assists at Washington with 564 and eighth in points with 1,122

• 39 points over last two games, 8.8 ppg in BIG play
 • 3rd among BIG freshmen in scoring
 • First Purdue rookie with three 20-pt games since 16-17
 • 20 pts vs. A&M earned BIG Freshman of the Week
 • Missed four games (medical), returned vs. Wisconsin
 • 2022 IHSA 3A State Champion with the Reynolds

• Made game-winning 3 against Wisconsin in Big Ten Tournament last season
 • Finished second on the team with 17 blocks last year
 • Scored in double digits in nine games and shot 45.5% from the field as a sophomore
 • Purdue's 10th Indiana Miss Basketball

• 3rd in Big Ten in assists, ninth in rebounding
 • 2nd Big Ten player to join 800-reb, 600-ast, 200-stl club
 • First non-point double-double nationally this year
 • Ranks eighth in Purdue history in assists (476)
 • Only Purdue player with multiple triple-doubles
 • 2nd Team All-Big Ten, All-Defensive Team in 2022-23

• Playing with sister Madison for the first time since 2020
 • Won two sectional titles, one regional and reached the 2020 IHSA 4A State Championship Game
 • Set Northwestern scoring record with 47 points
 • Posted a 78-17 record in high school

• Set career highs for pts and rebs vs. Valpo
 • Playing with sister Amiyah and former teammate Rashunda Jones after one year apart
 • No. 60 player, No. 16 forward ESPN HoopGurlz
 • Totaled 2,099 career points, second in Panther history behind Skylar Diggins-Smith

• 2nd in rebounding, 4th in scoring by BIG freshmen
 • 1-of-2 BIG averaging 9 ppg, 5 rpg (Potts - Neb.)
 • Most freshman season rebounds at Purdue since 17-18
 • 6 games with 7 pts, 7 rebs, leads Big Ten rookies
 • BIG FOTW after 12 ppg, 8 rpg vs. Wisc. & Indiana St.
 • 3-time state champ (2 in New York, 1 in South Carolina)

• Naismith High School All-America honorable mention
 • Won four regional and three district titles
 • Scored more points as a senior than her first three seasons combined (15.8 ppg)

• Scored in double figures in 16 games this year
 • 4th in the Big Ten in free throw percentage this year
 • 61 points away from 1,000 as a Boilermaker
 • 32nd in NCAA in active career points - 1,757
 • Always wears ribbons sent from her mom Libbie
 • First Australian in program history

• Scored career-best 10 points vs. Indiana State
 • Made Purdue debut against Southern Ind.
 • Tore ACL in Feb. 2023, made debut vs. Southern Ind.
 • 2022 Illinois Miss Basketball and 4A POTY as a junior
 • Invited to the U18 USA Team Trials
 • Four-time all-state, all-conference and all-area honoree

• Scored first Purdue points vs. Southern Indiana
 • Playing on the same team as Caitlyn for the first time
 • Transferred to Purdue after one year at Grand Canyon
 • No. 6 player in Wisconsin by Prep Girls Hoops
 • Tabbed the 2022 Wisconsin Sports Network as the state's top post player

• Leads BIG in 3PT% in all and league games (56%)
 • 8th in Purdue history in career 3-pointers with 183
 • Got engaged during holiday break to Rees Zay
 • Playing with McKenna for first time since 2021-20
 • Big Ten All-Freshman & honorable mention in 2020-21
 • First in IHSA history to lead three Final Fours in scoring

• 1-of-11 from BIG with 10+ PPG, 55 FG%
 • Set Purdue best with 22 points vs. SEMO
 • Hit double figures in 11 games this year
 • 14 pts, 11 rebs vs. A&M - first double-double at Purdue
 • Playing with Alaina for the first time ever
 • 2022 WAC Player of the Year and CoSIDA All-American

Career Highs:

P 23, at Penn State, 1/18/24
 R -
 A -
 M -

Career Highs:

P 23, at Penn State, 1/18/24
 R 5, 3 times
 A 3, 2 times
 M 26, vs. USI, 11/26/23

Career Highs:

P 16, 3 times
 R 7, 3 times
 A 4, 2 times
 M 30, at Penn State, 1/7/23

Career Highs:

P 28, at Wisconsin, 1/31/21*
 R 17, 2 times
 A 12, 3 times
 M 41, Michigan State, 12/5/22

Career Highs:

P 8, vs. USI, 11/26/23
 R 6, vs. USI, 11/26/23
 A 2, 2 times
 M 22, vs. USI, 11/26/23

Career Highs:

P 6, vs. Valpo, 12/3/23
 R 5, vs. Valpo, 12/3/23
 A 2, at Northwestern, 2/9/23*
 M 16, vs. Valpo, 12/3/23

Career Highs:

P 14, vs. Valpo, 12/3/23
 R 11, at Minnesota, 12/10/23
 A 2, 6 times
 M 36, at Minnesota, 12/10/23

Career Highs:

P 4, at UCLA, 11/6/23
 R 4, vs. SEMO, 12/6/23
 A 4, vs. Valpo, 12/3/23
 M 14, vs. USI, 11/26/23

Career Highs:

P 39, at San Diego St, 12/21/20*
 R 10, Long Beach State, 3/10/21*
 A 11, Western Michigan, 11/14/21*
 M 44, Indiana, 1/16/22*

Career Highs:

P 10, vs. Indiana St., 12/20/23
 R 3, vs. Valpo, 12/3/23
 A 1, at Notre Dame, 12/17/23
 M 12, at Notre Dame, 12/17/23

Career Highs:

P 18, Lindenwood, 11/26/22*
 R 8, Columbia, 12/11/22*
 A 1, 5 times
 M 35, Southern Utah, 3/10/23*

Career Highs:

P 21, vs. Southern, 11/12/23
 R 8, 4 times
 A 7, Michigan State, 1/3/21
 M 44, Indiana, 1/16/22

Career Highs:

P 30, at Utah Valley, 1/15/22
 R 14, 3 times
 A 5, at UTRGV, 2/13/21
 M 41, at Chicago State, 3/2/22

