

Topical Cream

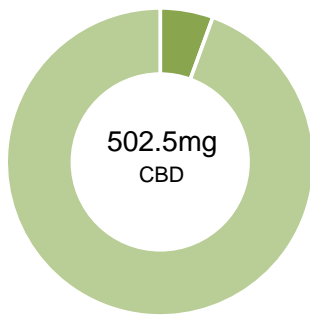
Batch ID: N/A

Reported: 21-Aug-2018

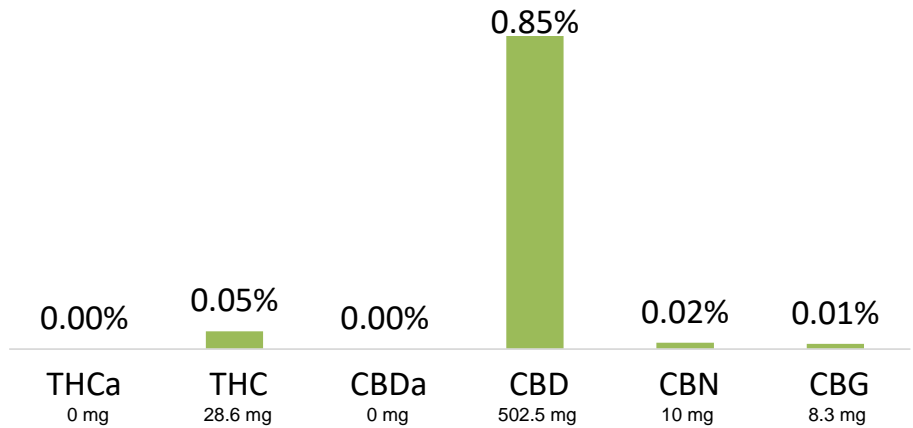
Type: Topical

Test: Potency

CANNABINOID PROFILE



- Total Potential THC 28.6mg **
- Total Potential CBD 502.5mg **



** Total Potential THC/CBD is calculated using the following formulas to take into account the loss of a carboxyl group during decarboxylation step.

Total THC = THC + (THCa *(0.877)) and Total CBD = CBD + (CBDa *(0.877))

% = % (w/w) = Percent (Weight of Analyte / Weight of Product)


NOTES:

Free from visual mold, mildew, and foreign matter.

of Servings = 1, Sample/Fill Weight = 59.1471g

FINAL APPROVAL


Sam Smith
21-Aug-2018
2:16 PM


Mike Branvold
21-Aug-2018
4:31 PM

PREPARED BY / DATE

APPROVED BY / DATE

Testing results are based solely upon the sample submitted to Botanacor Services, LLC, in the condition it was received. Botanacor Services, LLC warrants that all analytical work is conducted professionally in accordance with all applicable standard laboratory practices using validated methods. Data was generated using an unbroken chain of comparison to NIST traceable Reference Standards and Certified Reference Materials. This report may not be reproduced, except in full, without the written approval of Botanacor Services, LLC.