

PUTNAM PLACE

AUDIO / LIGHTING SPECIFICATIONS

Audio Specs

FOH:

Console: Behringer Wing w/ s32 Stage Box

Mains: 6 x JBL Active VRX (1 x 12") Line Array - 3 per side

Subs: 4 x JBL Active VRX (1 x 18") - under stage

Center Fill: 1 x JBL 10" Active Speaker

Patio: 1 x JBL 10" Active Speaker

Monitor Amps: 3 amps, capable of 800+ watts to each monitor channel

Monitors

- 8 x Yamaha SM15
- 4 x Monitor Mixes downstage
- 2 x Monitor Mixes upstage
- 5 x IEM or other mixes available from S32 upstage-right

Mics:

- 1 x Sure Beta52
- 1 x AKG D112
- 2 x Behringer C4 SDC
- 4 x Sennheiser e 604
- 2 x Sennheiser e 609
- 1 x Shure PG52
- 4 x Shure PG56
- 5 x Shure SM57
- 5 x Shure SM58
- 1 x Shure PG81
- 1 x Whirlwind Stereo D.I.
- 1 x PCDI Stereo D.I.
- 3 x Mono D.I.

Stands

- 9 x Tall Boom
- 3 x Straight (Round Base)
- 6 x Short Boom
- 1 x Straight Short

Output Routing

- AES50 A (S32 Stagebox)
- 1-11: Match Bus Outputs
- 12: Available
- 13: Center Fill
- 14: Subs
- 15: Main Left
- 16: Main Right

Console Local Outputs

- 1-7: Available
- 8: BUS 12 Outside Mix

Stage Drops

- 16-Channel - Upstage Left
- 12-Channel - Upstage Right
- 6-Channel - Downstage Center

Power Drops located at upstage wall or downstage

Cables

- 32 x XLR Cables (10' - 20')

Lighting Inventory

Upstage:

- 6 x ADJ Focus Spot Three (21-Channel)
- 4 x Beam 230 7R (16-Channel) - Profiles exist on internet for AVO and Grandma

Mid-stage:

- 2 x Elation Cuepix Blinder
- 2 x ADJ COB Cannon Color Wash (6-Channel)

Downstage:

- 4 x ADJ COB Cannon Color Wash (6-Channel)
- 3 x ADJ COB Cannon White Wash (3-Channel)
- 1 x ADJ Focus Spot Three (21-Channel)

Floor:

- 4 x Beam 230 7R (16-Channel) - When bringing ground package, these are removed from stage to free up space / power.

Control:

- Asus Laptop
- Avolites T1
- OSI MIDI for Titan
- Behringer X-Touch

Atmospherics:

- Chauvet Eco haze 2-Channel (Green Room & Office Doors must be closed to use)

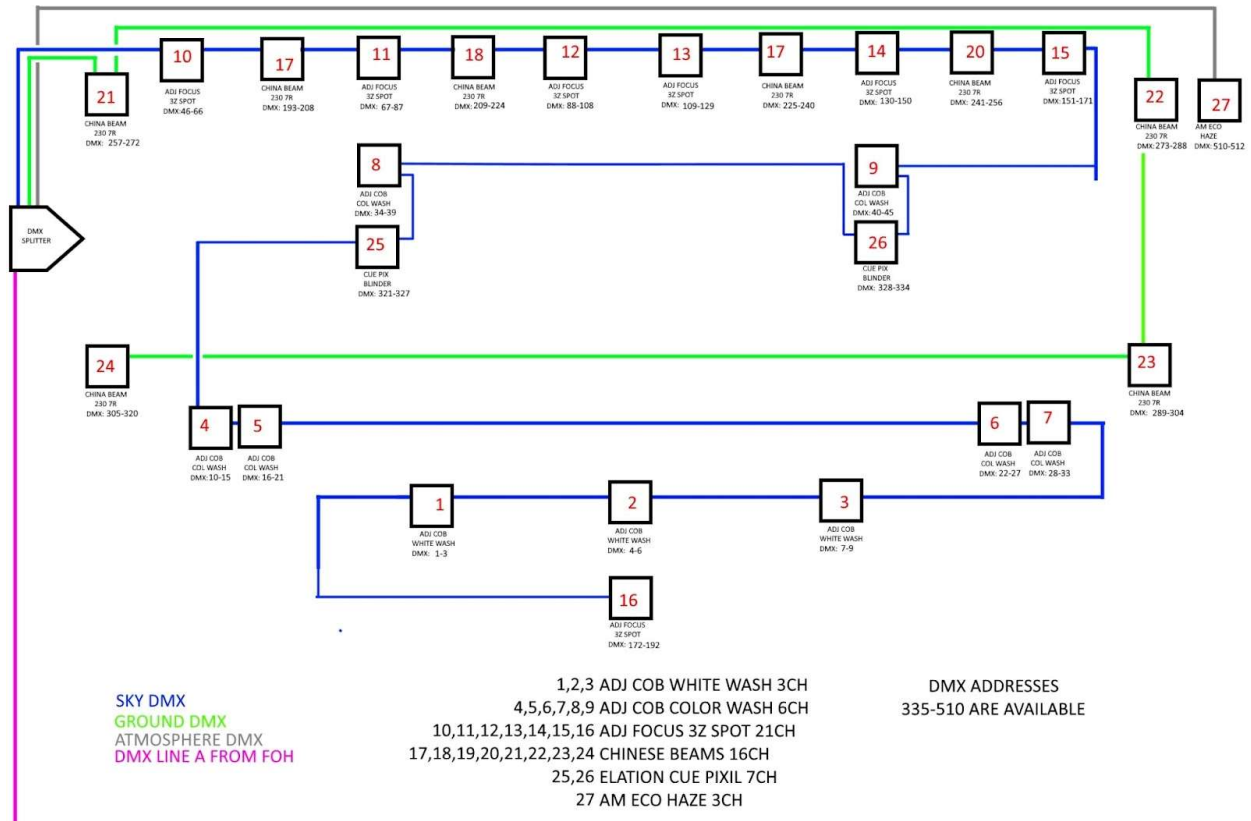
Guests:

You are welcome to bring additional ground fixtures. Please inform us of what you intend to bring and what power requirement you may have. We have 2 additional 20-amp circuits for lighting power, leaving 3 for band/stage power.

DMX Addresses are listed on Lighting Plot

DMX Addresses are not to be changed.

There is a 4-way DMX splitter onstage for air, ground, atmosphere and guests.



Stage Size - 16x24 with 8x10 wings on each side

Video Wall Specs

Absen LED Panels:

Size: 16.4 ft X 7 ft / Pitch: 2.9mm / Brightness: 1,000 nits