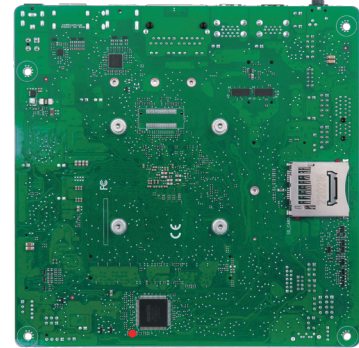
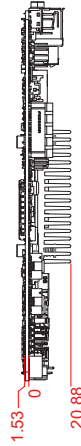
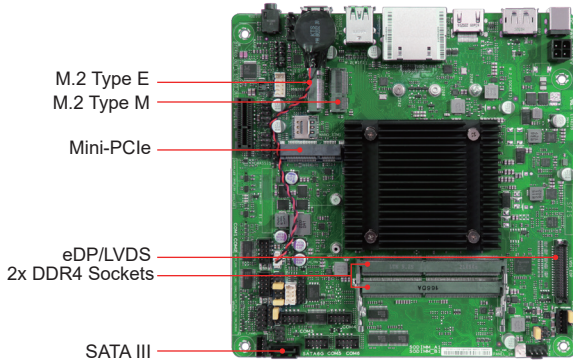




WADE-8173-J6412

Intel® Celeron® Processor J6412 based Mini-ITX Board with HDMI, DP, LVDS/eDP, Dual GbE, USB 3.2 Gen2, SATA III, Mini PCIe, M.2

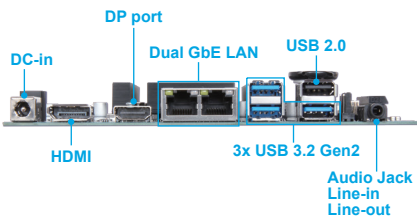


WADE-8173-J6412 is based on Intel® Celeron® processor J6412. With dual channel DDR4 SO-DIMM memory and rich I/O sets, the Portwell WADE-8173-J6412 Mini-ITX embedded board empowers energyefficient solutions for point-of-sale (POS) and industrial automation applications.

FEATURES

- Intel® Celeron® Processor J6412(formerly Elkhart Lake)
- Two SO-DIMM support DDR4 DRAM up to 16GB
- Support dual Ethernet, 6x COM Ports
- Support 3x USB 3.2 Gen2, 5x USB 2.0, 1x SATAIII port
- Supports 1x mini-PCIe, 2x M.2 socket (Key M & Key E)

REAR I/O



ORDERING GUIDE

AB1-3P59	(R).WADE-8173-J6412. Mini-ITX ESB, Intel Elkhart lake SoC Processor J6412 w/DDR4/DP/LVDS/HDMI/dual GbE LAN/ SATA
-----------------	---

PACKING LIST

One WADE-8173-J6412 motherboard
Two I/O shields
Two SATA cables
One SATA power cable

GENERAL

Processor	Intel® Celeron® processor J6412 in FCBGA1493 package, 2.0 Ghz (2.6 Ghz turbo), 1.5 MB L2 Cache, 10W TDP
Chipset	N/A
BIOS	AMI uEFI BIOS
Memory	Support 2x SO-DIMM sockets up to 32GB DDR4 3200 MHz non-ECC memory
Storage Devices	1x SATAIII ports
Watchdog Timer	Programmable watchdog timer
Hardware Monitoring	Temperature (CPU & System)
Expansion Interface	- 1x PCIe x1 Gen 3 - 1x M.2 Key E 2230 with PCIe x1 and USB 2.0 for Wireless - 1x M.2 Key M 2242/2260/2280 with PCIe x2 and SATA signal for SSD - 1x full/half size Mini PCIe socket with PCIe x1(with SIM holder) - 1x Full size SD card slot

I/O INTERFACE

Audio	- Intel® High Definition Audio interface Realtek® ALC897 High Definition Audio - 1x audio jack support Line-out/Line-in
Ethernet	2x RJ45 connectors on rear I/O (Realtek® RTL8111H)
Serial port	- 1x RS232/422/485 port on pin header - 5x RS232 ports on pin header
USB	- 3x USB 3.2 Gen2 on rear I/O - 1x USB 2.0 on rear I/O - 4x USB 2.0 on pin header
GPIO	8-bit GPI/GPO

DISPLAY

Graphic Controller	- Integrated Intel® UHD Graphics - Supports DirectX 12, OpenGL 4.5, OpenCL 1.2
Display Interface	Triple Displays - DP1: resolution up to 4096x2160 - DP2: resolution up to 4096x2160 (colay with HDMI) - HDMI: resolution up to 3840x2160 (Default) - LVDS: resolution up to 1920x1200 (Default) - eDP: resolution up to 4096x2160 (colay with LVDS)

Mechanical & Environment

Dimension	170mm(L) x 170mm(W)
Power Supply	12V DC in (1x external DC jack; 1x internal 4 pin power connector)
Environment	- Operation Temperature: 0°C to 60°C - Storage Temperature: -20°C to 80°C - Relative Humidity: 5% to 95%, non-condensing
MTBF	Over 100,000 hours at 40°C



Portwell, Inc. Headquarters
No. 242, Bo' Ai St., Shu-Lin Dist,
New Taipei City 238, Taiwan
Tel: +886-2-7731-8888
Fax: +886-2-7731-9888
E-mail: info@portwell.com.tw
www.portwell.com.tw

American Portwell
(Fremont, CA)
Tel: +1-510-403-3399
E-mail: info@portwell.com
www.portwell.com

Portwell Japan, Inc.
(Tokyo)
Tel: +81-3-6902-9225
E-mail: info@portwell.co.jp
www.portwell.co.jp

European Portwell
Tel: +31-252-620790
E-mail: info@portwell.eu
www.portwell.eu

Shanghai Portwell
Tel: +86-21-5771-2505
E-mail: info@portwell.com.cn
www.portwell.com.cn

Portwell India Technology Private Limited
Tel: +91-80-4168-4255
E-mail: enquiry@portwell.in
www.portwell.in

Portwell UK Ltd.
Tel: +44(0)1235-750-760
E-mail: info@portwell.eu
www.portwell.eu

Portwell Japan, Inc.
(Osaka)
Tel: +81-6-4807-7721
E-mail: info@portwell.co.jp
www.portwell.co.jp

KIOSK Embedded Systems GmbH
Tel: +49-8152-3962-500
E-mail: info@portwell.eu
www.portwell.de

Portwell Korea, Inc.
Tel: +82-31-450-3043
E-mail: info@portwell.co.kr
www.portwell.co.kr

