

Expand Into New Markets With Confidence. How Route4Me Can Calculate Your Exact Costs.



Route4Me

eBook
Series

© Route4Me Inc.

+1-888-552-9045



Expanding Into New Territories Is Expensive



According to conventional wisdom, if you want to expand into new territories and serve more customers, you'll need to hire more employees.

But Can You Afford It?

More employees means you'll need to add more salaries to your payroll. You'll be on the hook for more benefits and extra taxes as well. And if you run a courier company or some other business that sends your employees out to meet with customers, you'll need to pay for more gas and vehicle maintenance, too.

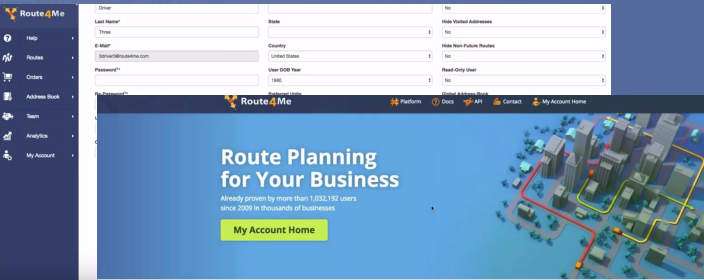


Expand Your Business Without Expanding Your Staff

You don't actually need to hire more employees to serve more customers. Not when you have the right tools.

With route optimization software, you can guarantee that every route you give your drivers is the most efficient route possible.

That means your drivers can visit more customers every day without having to rush to do so. You can expand your business without adding more members to your staff.



The screenshot displays the RouteMe software interface. On the left is a dark sidebar with navigation icons for Home, Routes, Orders, Address Book, Team, Analytics, and My Account. The main content area features a login form with fields for Email, Password, and a 'Log In' button. Below the form is a 3D city map with red and yellow routes overlaid. A banner at the bottom of the map reads 'Route Planning for Your Business' and 'Already proven by more than 1,032,192 users since 2003 in thousands of businesses'. A 'My Account Home' button is visible.

RouteMe

Platform Docs API Contact My Account Home

Route Planning for Your Business

Already proven by more than 1,032,192 users since 2003 in thousands of businesses

[My Account Home](#)

Our Easy-to-Use Optimization Software Puts Route Planning On Auto-Pilot So You Can Grow Your Business

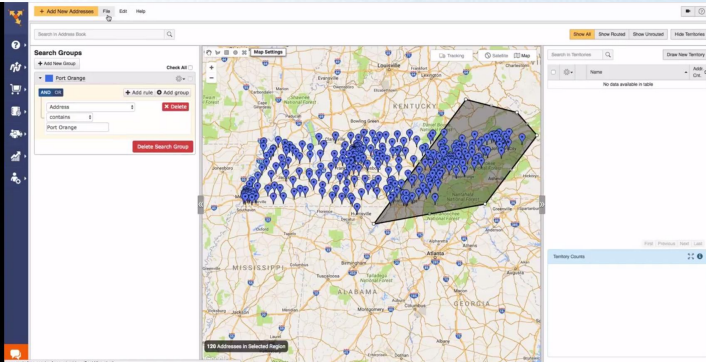
For every business whose employees are on the go.

Find Out If Entering Other Markets Works For Your Bottom Line

Make More Informed Business Decisions

Route4Me also allows you to create mock routes that will show you exactly how much it costs (in terms of fuel expenses and employee wages) to visit a hypothetical set of addresses.

That way, you'll know if expanding into a certain area is really worth it or not.



Your Bids Could Be Better

Making bids is a delicate art. Bid too high, and one of your competitors will probably win the contract. But if you bid too low, you won't be able to make much of a profit. You might even underestimate your expenses so much that you end up losing money on the contract. That's unacceptable.



Route4Me Is Your Crystal Ball. Before You Make A Bid, You Can Use Our Software To See How Low You Can Go While Still Turning A Decent Profit

The screenshot displays the 'Modify Vehicle Details' page in the Route4Me software. The interface includes a dark blue sidebar with navigation options: Help, Routes, Orders, Address Book, Team, Analytics, and My Account. The main content area is titled 'Vehicle - Teletrack Demo 4 (BPBC44)' and features a 'Remove Vehicle' button. The details are organized into three columns: Basic Information, Extended Information, and Registration Information. Below these columns is a section for '(Beta) Trucking Options'.

Basic Information	Extended Information	Registration Information
Alias* Teletrack Demo 4	Fuel Type Unleaded 87	Reg. State Alabama
Plate No* BPBC44	MFG City B	Reg. Country United States
VIN FMHLS7AN1DT133800	MPG Highway 14	Year Purchased 1995
Make Ford	Height 72 (8' 0")	
Model	Weight 3000	
Year 1995	Axles 4	
Type Select Type		

(Beta) Trucking Options

With Route4Me, you'll know exactly how much a new route will cost you before you try to win a contract. Your bids will be just right, every time.

Start Your Free Trial Today

See For Yourself What Route4Me Can Do For Your Bottom Line
No Credit Card Is Needed For This Free 7-Day Trial

[Click Here To Begin Your Free Trial](#)

Call Us At +1-855-823-2598

Our Small Business Routing Experts
Will Get You Set Up Right Away