

Manual Route Planning Can Be Straight-Up Painful – It's Time To Switch To Route Mapping Software



Route4Me

eBook Series

© Route4Me Inc.

+1-888-552-9045



Planning Routes Manually Is A Recipe For Disaster

Do you still plan your routes with pen and paper?

If so, you need to stop. Go ahead and throw that pen out the window. Ball up your map and toss it in the trash. It's time to change your route planning process.





Manual Route Planning Is A Waste Of Time

You see, planning routes manually takes a *long* time.

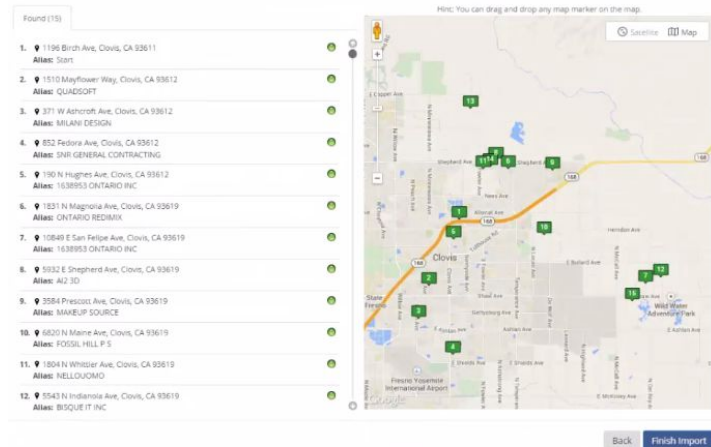
There's more to it than just figuring out which roads your drivers must take to reach your customers. You also need to account for traffic, weather, construction, customer availability, and other factors.

If you have dozens of customers and multiple drivers, this process can take hours.

Route Mapping Software Shaves Hours Down To Seconds

Planning routes with route mapping software is much quicker.

All you need to do is plug in the addresses of your customers, and then your route will be ready in 30 seconds or less. Just imagine what you could do with all that extra time...



Don't Keep Your Customers Waiting



Another problem with manual route planning is that the routes you come up with are rarely perfect. Route planning is complicated work. You might make a mistake and accidentally give your drivers an inefficient or (even worse) inaccurate route.

Inefficient routes will delay your drivers. Inaccurate routes will result in your drivers getting lost, which would delay them even further. Your customers won't like that!

Software Allows You To Show Up On Time, Every Time

Route planning software guarantees that every route you give your drivers is the most efficient route possible.



Your drivers will have everything they need to show up on time consistently. You'll be able to keep your customers happy and maintain a good reputation.



Sometimes, An Address Is Not Enough

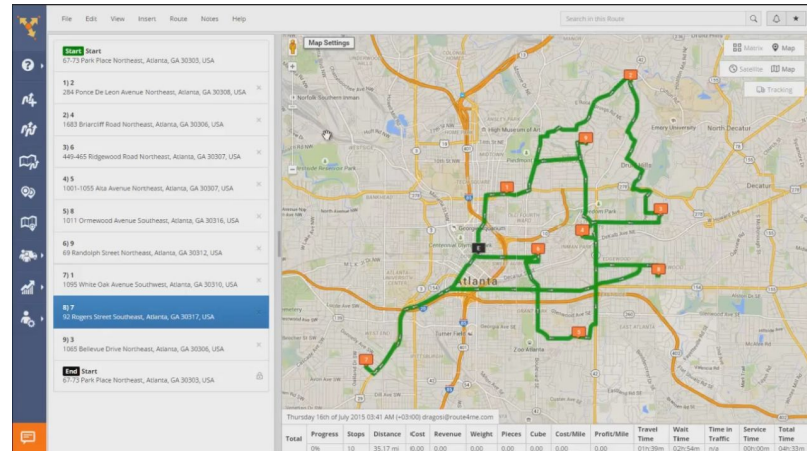
Some destinations, such as hospitals and universities, have many different entrances.

If your driver only has an address to work with, they won't know exactly where to go. They'll need to circle around to find the right entrance. That delay might make them late to their next stop, which could make them late to the stop after that, etc. It only takes one delay to mess up an entire route.

Context Always Helps

Most route planners let you add notes to routes. That way, you can tell your drivers where they need to go when an address isn't enough.

You can use this feature to give your drivers additional context as well, such as the keycode to a gate or a picture of the customer's location.



You're Only One Piece Of Software Away From Making Much More Money



The benefits of using a route planner are obvious. It's less time-consuming and more effective than planning routes manually.

Overall, route mapping software allows you to save time, save gas, and make more money.

Start Your Free Trial Today

See for yourself what Route4Me can do for your bottom line

[Click Here To Begin Your Free Trial](#)

Call Us: +1-855-823-2598

And have our small business routing experts
set up routes for your business

No Credit Card Needed for this Free 7-Day Trial