

DENZA D9

LIMITLESS ELEGANCE



DENZA

— RÊVEA —
AUTOMOTIVE



UNVEIL LIMITLESS LUXURY

Reflect your taste through the exquisite design of the DENZA D9, based on π -Motion concept: simple, elegant and innovative. Combined with excellent driving performance, it offers limitless luxury and comfort.

The taillights design is inspired by meteor stream.
Featuring the distinctive π symbol, elegant and perfectly balanced.



The front design is inspired by a silver meteor stream,
featuring sparkling headlights that enhance brightness and visibility

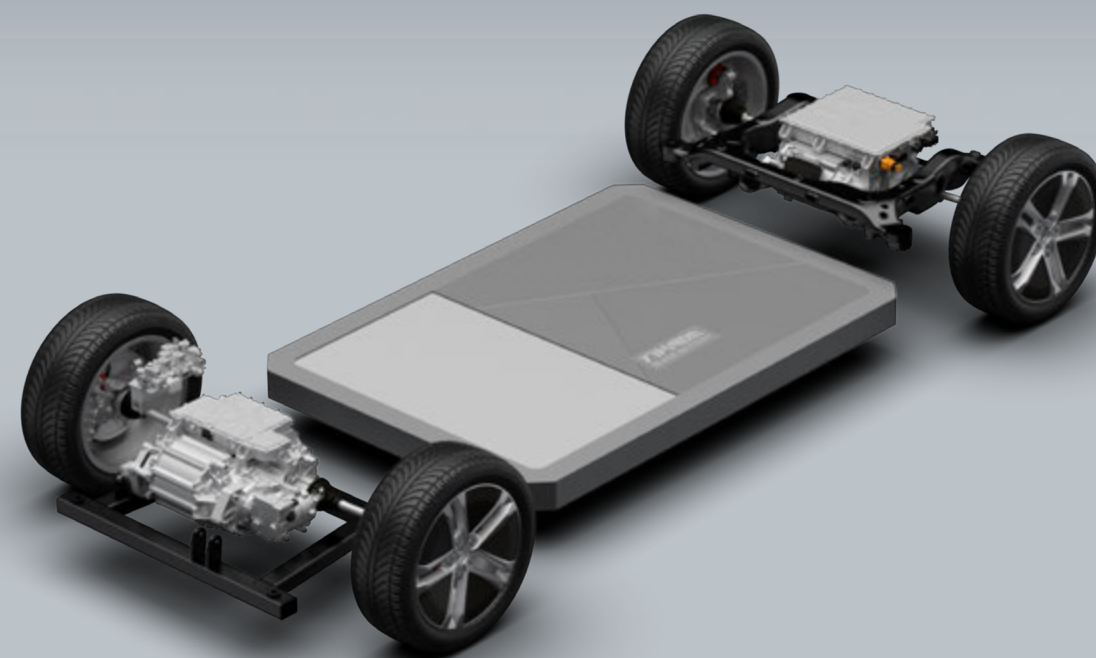
e-Platform 3.0

Platform of the future that elevates driving performance,
providing a truly modern and luxurious travel experience.



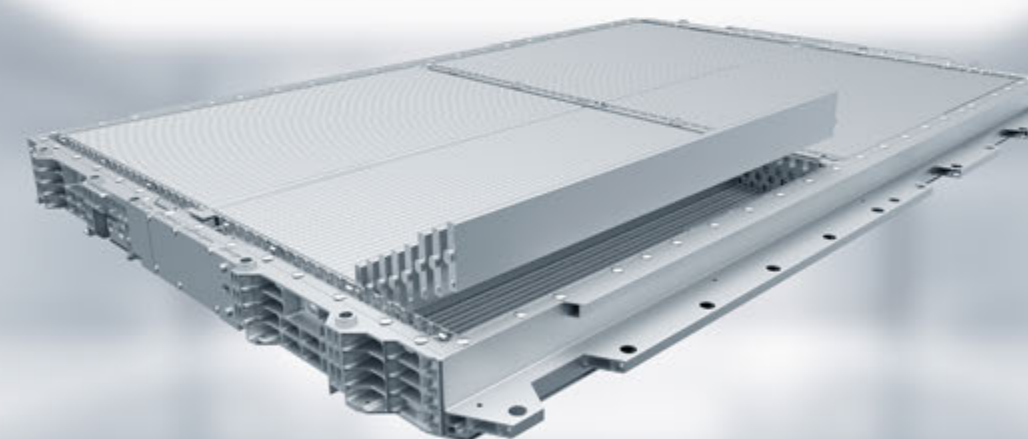
DiSus-C Intelligent Damping Suspension

Electric power-controlled suspension system,
ensuring a smooth and efficient driving experience



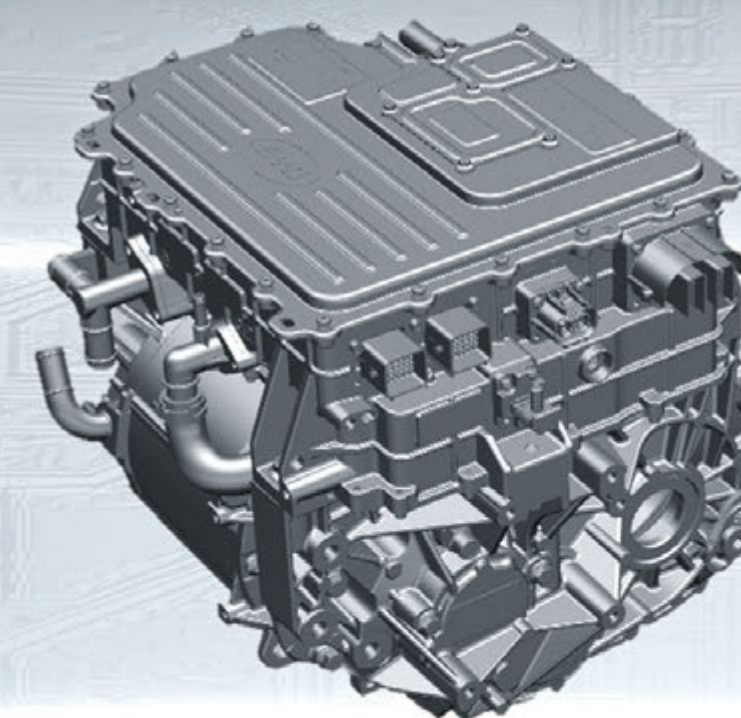
BYD Blade Battery

World-class safety innovation in battery technology.



8 in 1 Electric Powertrain

Designed specifically for BEVs, delivering superior
performance for an exceptional driving experience.





LIMITLESS LUXURY E-MPV

Experience beyond the luxury in every journey with DENZA D9, 7-seat electric MPV, designed for modern executives and families. It features a spacious cabin combined with advanced technology, convenience, and design. Reflecting attention in every detail, ensures a truly superior journey.

Enjoy the ultimate tranquility experience in the cabin with superior soft touch Nappa leather seats that provide relaxation and the aesthetics of limitless traveling.



Complete your memorable journey with a 5.5-inch LCD screen that allows to adjust seats, sliding doors, windows, glass roof, air-conditioning system, infotainment system and vehicle refrigerator.



Superior comfort with captain seats designed to perfectly fit with sitting posture according to ergonomics design. The seat's massage function creates relaxation throughout the journey.



Going beyond the next level with 15.6-inch intelligent multimedia touchscreen and a 4-zone independent voice assistant.



Dynaudio premium audio system with 14 speakers enhances the journey with superior audio quality.

DENZA D9 Specification



Dimensions	DENZA D9	
	Premium	Performance AWD
Overall Length (mm)	5,250	
Overall Width (mm)	1,960	
Overall Height (mm)	1,920	
Wheel Track – Front / Rear (mm)	1,675/1,675	
Wheelbase (mm)	3,110	
Kerb Weight (kg)	2,764	2,865
Gross Vehicle Weight (kg)	3,338	3,439
Ground Clearance (mm)	155	
Ground Clearance Maximum Loaded (mm)	140	
Minimum Turning Radius (m)	5.95	
Luggage Capacity – Min (L)	410	
Luggage Capacity – Max (L)	2,310	
Powertrain		
Drivetrain	Front-Wheel Drive	All-Wheel Drive
Motor Type	Permanent Magnet Synchronous Motor (PMS)	
Front Motor Maximum Power (kW)	230	
Front Motor Maximum Torque (N·m)	360	
Rear Motor Maximum Power (kW)	–	45
Rear Motor Maximum Torque (N·m)	–	110
Maximum Power (kW)	230	275
Maximum Torque (N·m)	360	470
Acceleration 0–100km/h (s)	9.5	6.9
Standard/ECO/Sport/Snow Driving Modes	●	
New Energy		
Driving Range – NEDC (km)	600	580
Portable Charging Cable (Mode 2)	●	
AC Charging Port – Type 2 – Max. Power (kW)	11 (3-phase) / 7 (1-phase)	
DC Charging Port – CCS 2 – Max. Power (kW)	166	
VtoL Function	●	
VtoL Discharge Adapter	●	
Regenerative Braking	●	
Battery		
Battery Type	BYD Blade Battery	
Battery Capacity (kWh)	103.36	
Battery Intelligent Temperature Control System	●	
Suspension & Brake System		
Front Suspension	MacPherson Strut	
Rear Suspension	Multi-link	
Frequency Selective Damping (FSD) Shock Absorbers	●	–
DiSus-C Intelligent Damping Suspension	–	●
Front Brake	Ventilated Disc	
Rear Brake	Ventilated Disc	
Intelligent Power Brake Control System	●	●
Wheel & Tyre		
Alloy Wheels with Low Wind Resistance	18-inch	
Tyre Size	235/60 R18	
Silent Tyre	–	●
Tyre Repair Kit	●	●
Exterior		
LED Headlights	●	●
Automatic Headlights	●	●
Intelligent High Beam Control (IHBC)	●	●
Follow-Me-Home Headlights	●	●
Welcome Headlights	–	●
LED Daytime Running Lights (DRL)	●	●
LED Taillights	●	●
Rear Door Pedal Welcome Lights	●	●
Sequential Rear Indicators	●	●
LED Corner Blind Spot Lighting	●	●
LED High Mount Brake Light	●	●
Multi-color Charging Port Light	●	●
Panoramic Sunroof with Electric Sunshade – Front	●	●
Panoramic Glass Roof with Electric Sunshade – Rear	●	●

Exterior	DENZA D9	
	Premium	Performance AWD
2 nd Row Double Side Electric Sliding Doors	●	●
Front Electric Soft-close Suction Doors	●	●
Power Tailgate with Position Memory Function	●	●
Electrically Foldable and Adjustable Outside Rear View Mirrors with Heater	●	●
Exterior Mirrors with Angle Adjust Memory	–	●
Front Boneless Wipers	●	●
Rain Sensing Wiper	●	●
Interior		
Multifunction Steering Wheel	●	●
Electric Power Steering (EPS)	●	●
Head-up Display (W-HUD)	–	12-inch
10.25-inch LCD 3D Instrument Panel	●	●
Auto-dimming Interior Mirror	–	●
Streaming Interior Mirror (Internal)	–	●
Auto Windows with Anti-trap	●	●
Front Center Armrest with 4 Cup Holders	●	●
Metal Door Sill Protectors	●	●
Front Sunvisor with Vanity Mirror & Light	●	●
Multi-color Ambient Light	●	●
One Touch On-Off LED Map Lights	●	●
ISOFIX Child Restraint Anchorage 4 Points	●	●
Seating Capacity	7	
Three Row Seats Distribution (2 – 2 – 3)	●	●
Seat Material	Premium Leather	NAPPA Leather
Roof Lining Material	Fabric	Premium Suede
Driver & Passenger Seats		
8-ways Power Front Seats Adjustment	●	●
4-ways Power Front Seats Lumbar Support Adjustment	●	●
Front Seats Massage	–	●
Front Seat Ventilation System	●	●
Driver's memory Seat	–	●
Front Seats Headrest Side Wing Adjustment	●	●
2 nd Row Seats		
4-ways Power 2 nd Row Seats Adjustment	●	●
4-ways Power 2 nd Row Seats Lumbar Support Adjustment	●	●
2 nd Row Seats Massage	●	●
2 nd Row Seats Ventilation System	●	●
2 nd Row Memory Seats	●	●
2 nd Row Armrests with Multi-function Dual LCD Screen	●	●
2 nd Row Seats with Electric Leg Rest Adjustment	●	●
2 nd Row Seats Headrest Side Wing Adjustment	●	●
2 nd Row Seats Headrest Manual Height Adjustment	●	●
2 nd Row Seats with Multi-function Table Board	●	●
VIP Seat Switch	●	●
3 rd Row Seats		
4-ways Manual 3 rd Row Seats Adjustment	●	●
60/40 Split Fold-Down 3 rd Row Seat	●	●
Safety & Driving Assitance System		
Front Airbags – Driver & Front Passenger	●	●
Side Airbags – Driver & Front Passenger	●	●
Side Curtain Airbags – Front & Rear	●	●
Side Airbags – 2 nd Row	●	●
Dual Stage Seat Belt Pretensioner – Front	●	●
Seat Belt Pretensioner with Limited Force – 2 nd Row	●	●
Child Safety Lock	●	●
360° Surround Vision View Camera	●	●
Intelligent Driving High Perception Camera	●	●
Parking Sensor	8 Zone	
Millimeter Wave Radar	3 Positions	5 Positions
Hydraulic Brake Boost (HBB)	●	●
Hydraulic Brake Assist (HBA)	●	●
Electronic Stability Control (ESC)	●	●
Traction Control System (TCS)	●	●

Safety & Driving Assitance System		DENZA D9	
		Premium	Performance AWD
Electronic Brake-force Distribution (EBD)		●	●
Hill Hold Control (HHC)		●	●
Hill Descent Control System (HDC)		●	●
Electric Parking Brake System (EPB)		●	●
Automatic Vehicle Hold (AVH)		●	●
Intelligent Power Brake System		●	●
Brake Disc Wiping System (BDW)		●	●
Brake Override System (BOS)		●	●
Roll Movement Intervention (RMI)		●	●
Automatic Unlocking by Collision Sensing		●	●
Adaptive Cruise Control (ACC)		●	●
Intelligent Cruise Control (ICC)		●	●
Traffic Sign Recognition (TSR)		●	●
Automatic Emergency Braking (AEB)		●	●
Front Collision Warning (FCW)		●	●
Rear Collision Warning (RCW)		●	●
Lane Departure Warning (LDW)		●	●
Lane Change Assistance (LCA)		●	●
Emergency Lane Keeping Assist (ELKA)		●	●
Front Cross Traffic Alert (FCTA)		–	●
Front Cross Traffic Brake (FCTB)		–	●
Rear Cross Traffic Alert (RCTA)		●	●
Rear Cross Traffic Brake (RCTB)		●	●
High Beam Assist (HMA)		●	●
Blind Spot Detection (BSD)		●	●
Door Open Warning (DOW)		●	●
Driver Monitor System (DMS)		–	●
Tyre Pressure Monitoring System (TPMS)		●	●
Multimedia & Convenience			
Intelligent Multimedia Touch Screen		15.6-inch	
*Bluetooth® Phone Connectivity and Audio Streaming		●	●
*Wireless Apple CarPlay® and Android Auto™		●	●
FM Radio		●	●
DYNAUDIO Hi-Fi Class Audio, 14 Speakers		●	●
4 Zone Independent Voice Assistant		●	●
*Satellite Navigation		●	●
*Music Streaming		●	●
1 x USB-C & 1 x USB-A – Front		●	●
2 x USB-C – 2 nd Row		●	●
2 x USB-C – 3 rd Row		●	●
12V Power Socket – Front		●	●
4G Network Connection		●	●
OTA Updates		●	●
3D HD Transparent Panoramic Imaging System		●	●
Keyless Entry & Keyless Start		●	●
Remote Air Conditioning Control		●	●
NFC Card Key		●	●
*DENZA Digital Key		●	●
Wireless Phone Charger 3 Point (50W)		Front : 1 Point 2 nd Row : 2 Points	
Automatic Tri-Zone Air Conditioner – Driver, Passenger & Rear		●	●
Independent 2 nd & 3 rd Row Air Vents		●	●
Vehicle Refrigerator		●	●
12 Cup Holders		●	●
Remote High Temperature Sterilization		●	●
IONIZER Air Purifier		●	●
PM2.5 Air Filter with High Performance (CN95)		●	●
Exterior Color		Interior Color	
Quantum Black		Black / Beige	●
Harbour Grey		Black / Beige	●
Arctic White		Black / Brown	●
Whale Sea Blue		Black / Brown	●

Note : The real range is influenced by many factors such as individual driving style, load, traffic etc. The declared range is estimated for reference only. • The Denza intelligent cockpit will be continuously upgraded , and the specific functions may differ from those listed in this configuration table,. Certain functions require software or hardware support of third-party service providers, or Over the Air (OTA) upgrades for implementation . For specific details, please refer to the physical vehicle or the current version of the Denza intelligent cockpit system. • Bluetooth® is a registered trademark of Bluetooth SIG, Inc. Compatibility and functionality varies depending on device. • Apple CarPlay® is a registered trade mark of Apple Inc. Requires compatible device. • Android Auto™ is a registered trade mark of Google Inc. Requires compatible device,and wireless Android Auto™ is compatible with an active data plan, 5 GHz Wi-Fi support, and the latest version. • BYD provides free map update for 3 years. • Music streaming requires data usage or over Wi-Fi. • DENZA Digital Key to compatible iOS or Android devices, which include iPhone, Samsung Galaxy or Google Pixel™.Please check the list of supported devices in the BYD APP or "Vehicle Settings/Digital Key" on the car display. • Colours depicted are a guide only and may vary from actual colours due to the printing. • Driving assist system are not a substitute for the driver's responsibility of the vehicle. • BYD reserves the right to vary vehicle specifications and standard features from those detailed in this brochure.

REVER AUTOMOTIVE CO., LTD. (HEAD OFFICE)
865 Siam at Siam Hotel Bldg. 9th Fl., Rama 1 Road, Wangmai Pathumwan, Bangkok 10330
Tel. 02 766 8880 E-mail: contact@reverautomotive.com

