



AVVY
LEARNING

Math Placement Assessment

If you see this icon, you may use paper
and pencil to solve the problem.



$$5 + 4 = \underline{\hspace{2cm}}$$

$$8 + 8 = \underline{\hspace{2cm}}$$

$$6 + 7 = \underline{\hspace{2cm}}$$

$$11 - 6 = \underline{\hspace{2cm}}$$

$$13 - 7 = \underline{\hspace{2cm}}$$

$$18 - 9 = \underline{\hspace{2cm}}$$

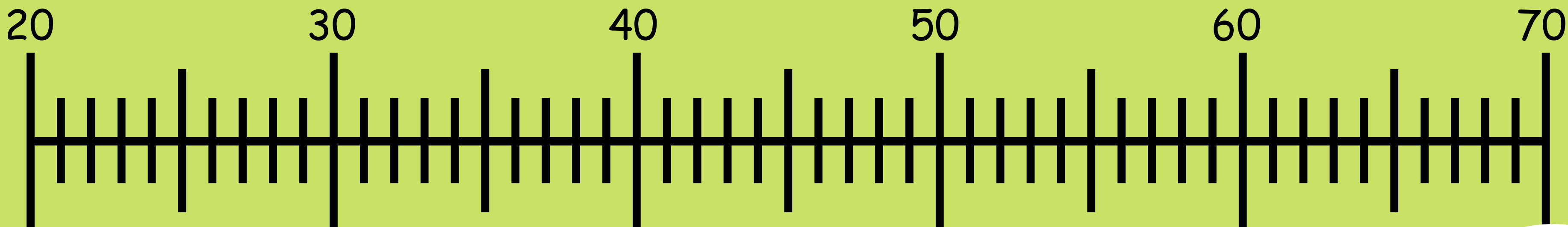


$$46 + 23 = \underline{\quad}$$

$$37 + 12 = \underline{\quad}$$

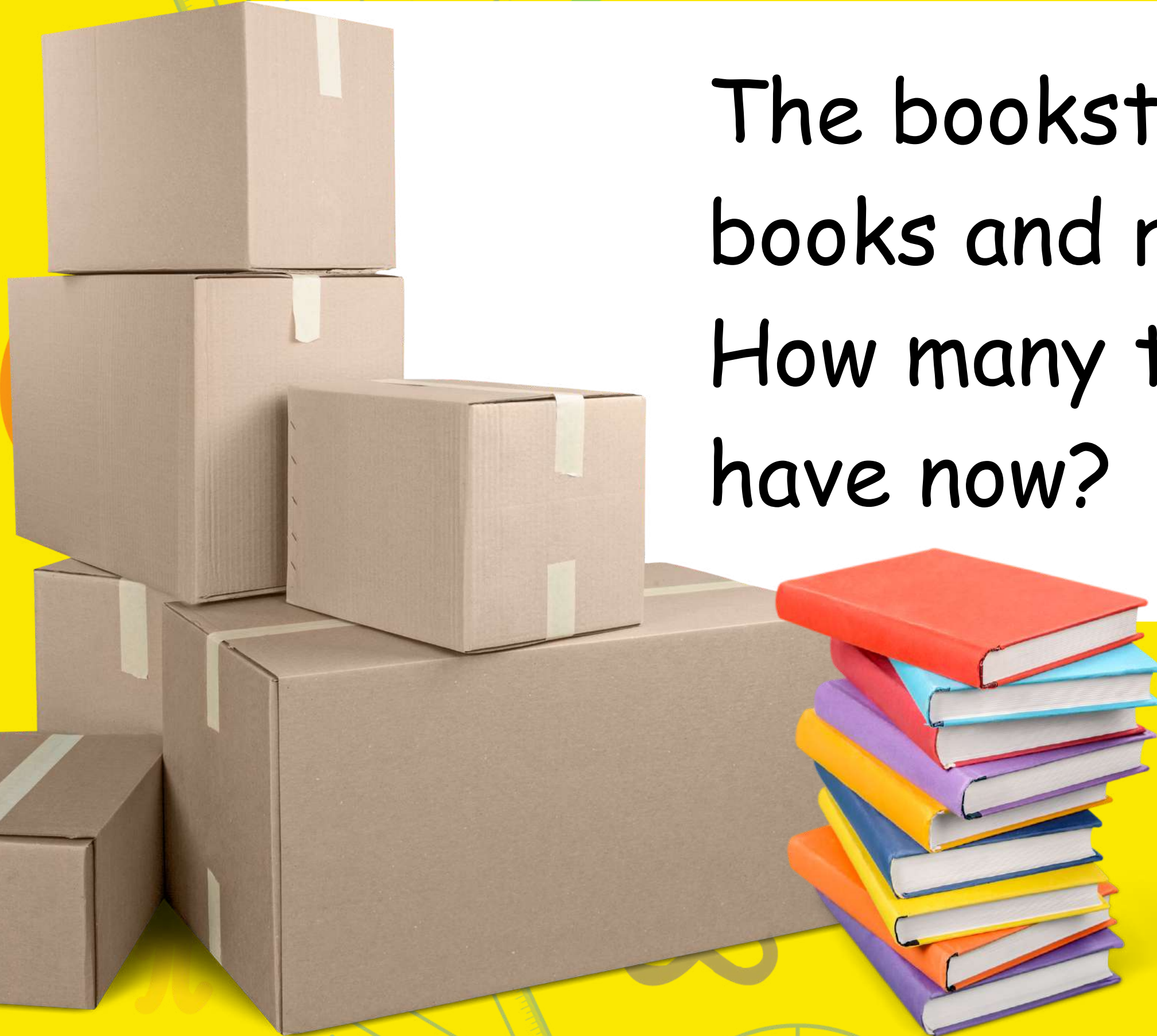
$$47 - 24 = \underline{\quad}$$

$$68 - 37 = \underline{\quad}$$





The bookstore had 26 boxes of books and received 15 more boxes. How many total boxes do they have now?





The bookstore has 44 boxes of books. They decided to start opening some of the boxes. They opened 22 boxes. How many boxes are still closed?





325





789





Skip count by 5's

360, _____, _____, _____, _____, _____, _____, _____, 400

Skip count by 10's

540, _____, _____, _____, _____, _____, 600

Skip count by 100's

125, _____, _____, _____, 525

$$877 + 10 = \underline{\hspace{2cm}}$$

$$391 + 10 = \underline{\hspace{2cm}}$$

$$276 + 100 = \underline{\hspace{2cm}}$$

$$678 + 100 = \underline{\hspace{2cm}}$$

$$877 - 10 = \underline{\hspace{2cm}}$$

$$391 - 10 = \underline{\hspace{2cm}}$$

$$276 - 100 = \underline{\hspace{2cm}}$$

$$678 - 100 = \underline{\hspace{2cm}}$$



Three friends have 12 cookies. They decide to split the cookies up evenly. How many cookies will each friend get?

$$3 \times 12$$

$$12 \div 3$$

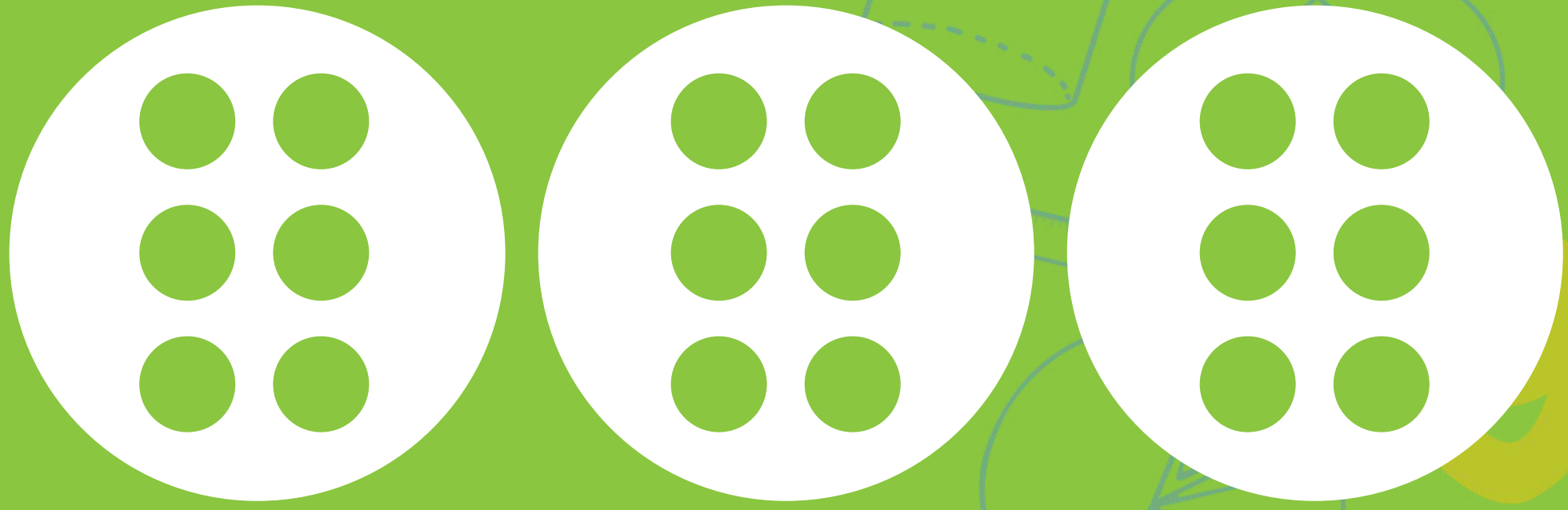
$$3 \times 4$$

$$12 \div 4$$

Modeling Division with Pictures



$$3 \times 6 = \underline{\hspace{2cm}}$$



$$18 \div 3 = \underline{\hspace{2cm}}$$





Find the missing numbers:

$$3 \times \underline{\hspace{2cm}} = 9$$

$$10 \times \underline{\hspace{2cm}} = 80$$

$$12 \div \underline{\hspace{2cm}} = 3$$

$$14 \div \underline{\hspace{2cm}} = 2$$

$$\underline{\hspace{2cm}} \times 5 = 20$$

$$\underline{\hspace{2cm}} \div 4 = 2$$

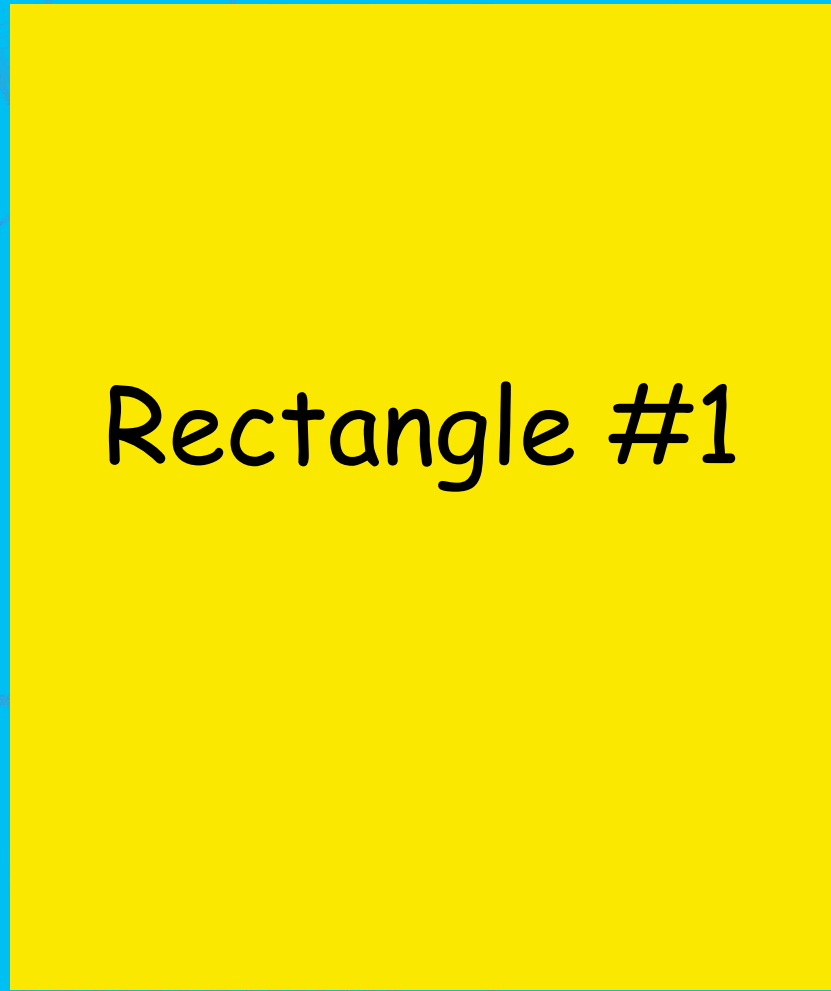
Area



3 in.

5 in.

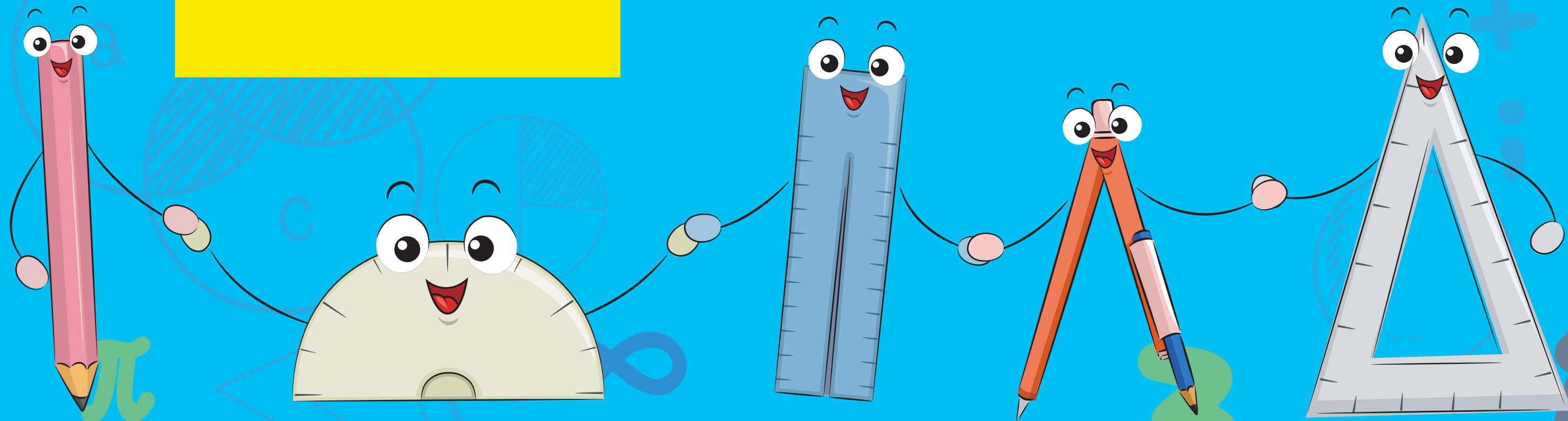
Rectangle #1



9 in.

2 in.

Rectangle #2



Area

3 ft.

3 ft.

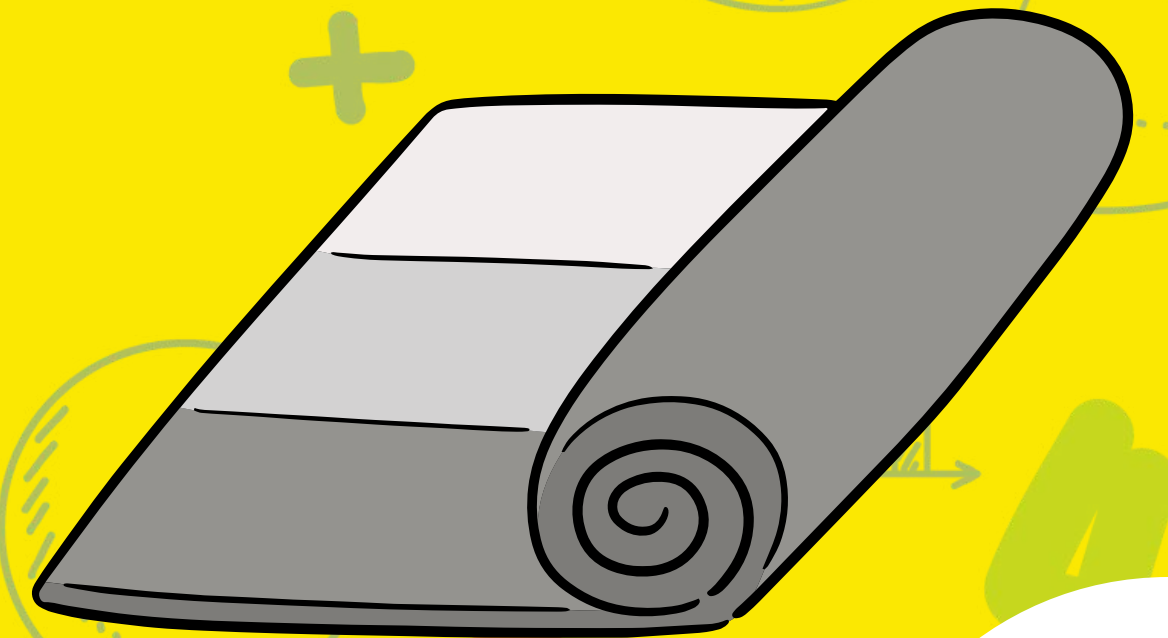
closet

2 ft.

hallway

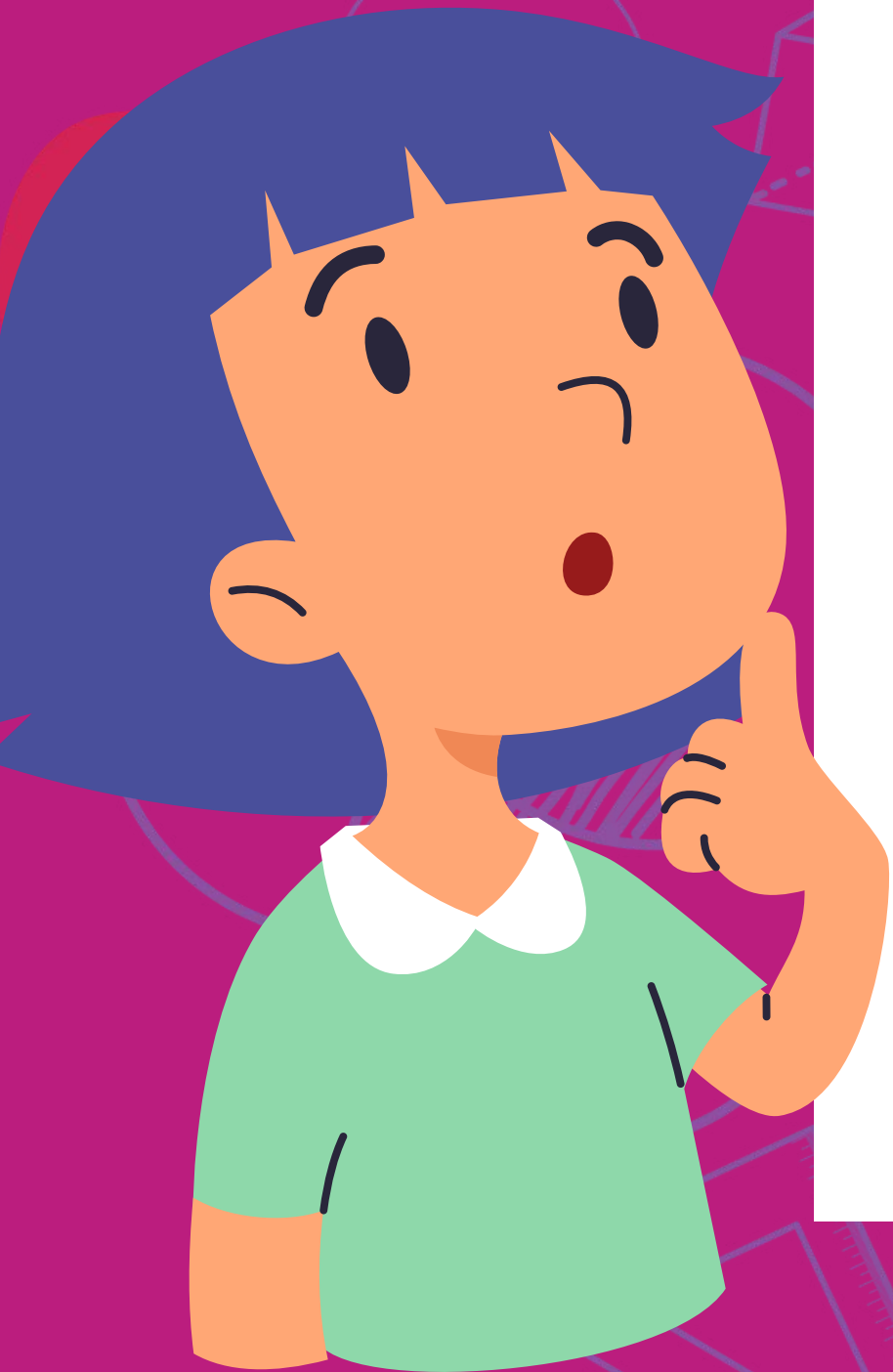
6 ft.

My grandma is getting new carpet for her closet and hallway. Her closet measures 3 feet by 3 feet. Her hallway measures 2 ft. by 6 ft. How much carpet will she need to order to cover the total area of the closet and hallway?



8,671,324





- Round 72,789 to the nearest thousands place.
- Now round 72,789 to the nearest ten thousands place.
- New York City has a population of 8,380,000 people. Round this number to the nearest million people.

Adding and Subtracting
Multi-digit Numbers



$$5,134 + 972 = \underline{\hspace{2cm}}$$

$$8,275 + 3,642 = \underline{\hspace{2cm}}$$

$$5,671 - 860 = \underline{\hspace{2cm}}$$

$$4,201 - 2,579 = \underline{\hspace{2cm}}$$



Solving Multi-step Word Problems



Marco has 4,374 paper clips. Eliza has 827 paper clips. They decided to combine their paper clips. If they give 584 paper clips to Jackson, how many paper clips will they have left?



Rule: add 8

1, _____, _____, _____, _____, _____, _____





9

(1,9)

(3,3)

24

(_ , _)

(_ , _)

(_ , _)

(_ , _)



$$621 \times 4 = \underline{\hspace{2cm}}$$

$$814 \times 5 = \underline{\hspace{2cm}}$$

$$24 \times 36 = \underline{\hspace{2cm}}$$

$$15 \times 11 = \underline{\hspace{2cm}}$$





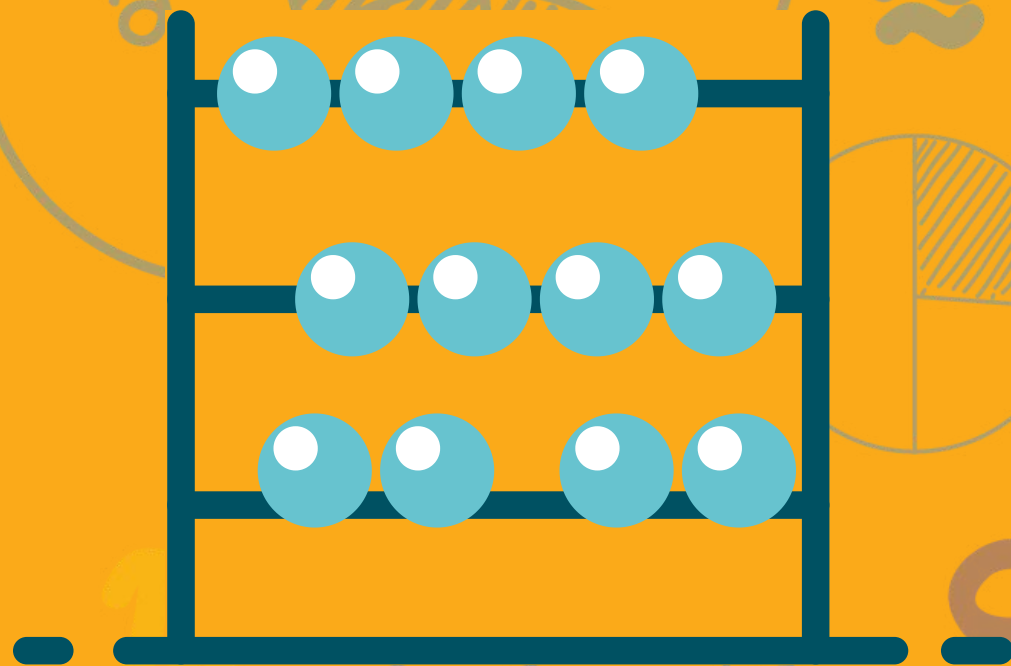
$$93 \div 3 = \underline{\hspace{2cm}}$$

$$273 \div 3 = \underline{\hspace{2cm}}$$

$$752 \div 4 = \underline{\hspace{2cm}}$$



3,482,956





$$23,479 \times 100 =$$

$$6,190 \times 1,000 =$$

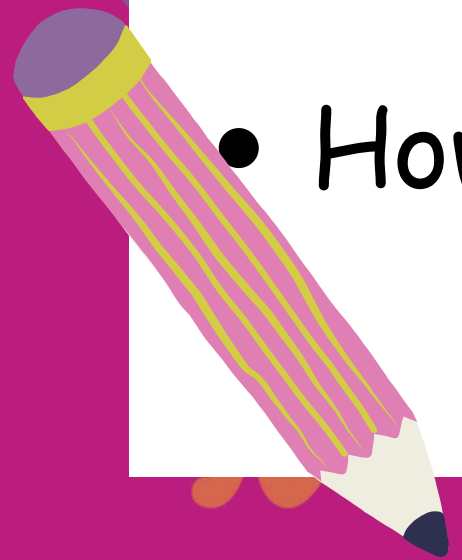
$$32,891,900 \div 10 =$$

$$12,340,000 \div 1,000 =$$



Example: In exponential form the number 100 can be written as 10^2 .

- How would you write the number 10,000 in exponential form?
- How would you write the number 1,000,000 in exponential form?
- How would you write 10^3 in numeral (number) form?
- How would you write 10^7 in numeral (number) form?





$$20 + 15 - 8$$

$$3 \times (15 \div 5)$$

$$5 + (6 \times 7) - 12 \div 2$$

Multi-digit
multiplication

$$32 \times 24 =$$

$$75 \times 35 =$$

$$324 \times 22 =$$

$$406 \times 135 =$$



Division

$$273 \div 3 =$$

$$624 \div 7 =$$

$$752 \div 25 =$$

$$2,359 \div 15 =$$





Thanks for taking the
Savvy Learning Math
Placement Assessment!