

# CHINTELS PARADISO

*peaceful abode*

SECTOR 109, CHINTELS METROPOLIS  
GURGAON



FLOOR PLANS & SPECIFICATIONS



Perspective View



CHINTELS  
PARADISO  
*peaceful abode*

## CHINTELS PARADISO

Chintels Paradiso is a part of the sprawling CHINTELS METROPOLIS, coming up on the edge of Delhi. With over 20 million square feet of prime development in the area, it is anticipated to be a supremely valuable and upscale locale in the region.

Chintels Paradiso is a modern development of 1.1 million sqft premium high rise apartments located in the prime sector 109, Gurgaon and just a few kilometers away from Indira Gandhi International Airport, Dwarka, south Delhi and other parts of Gurgaon.

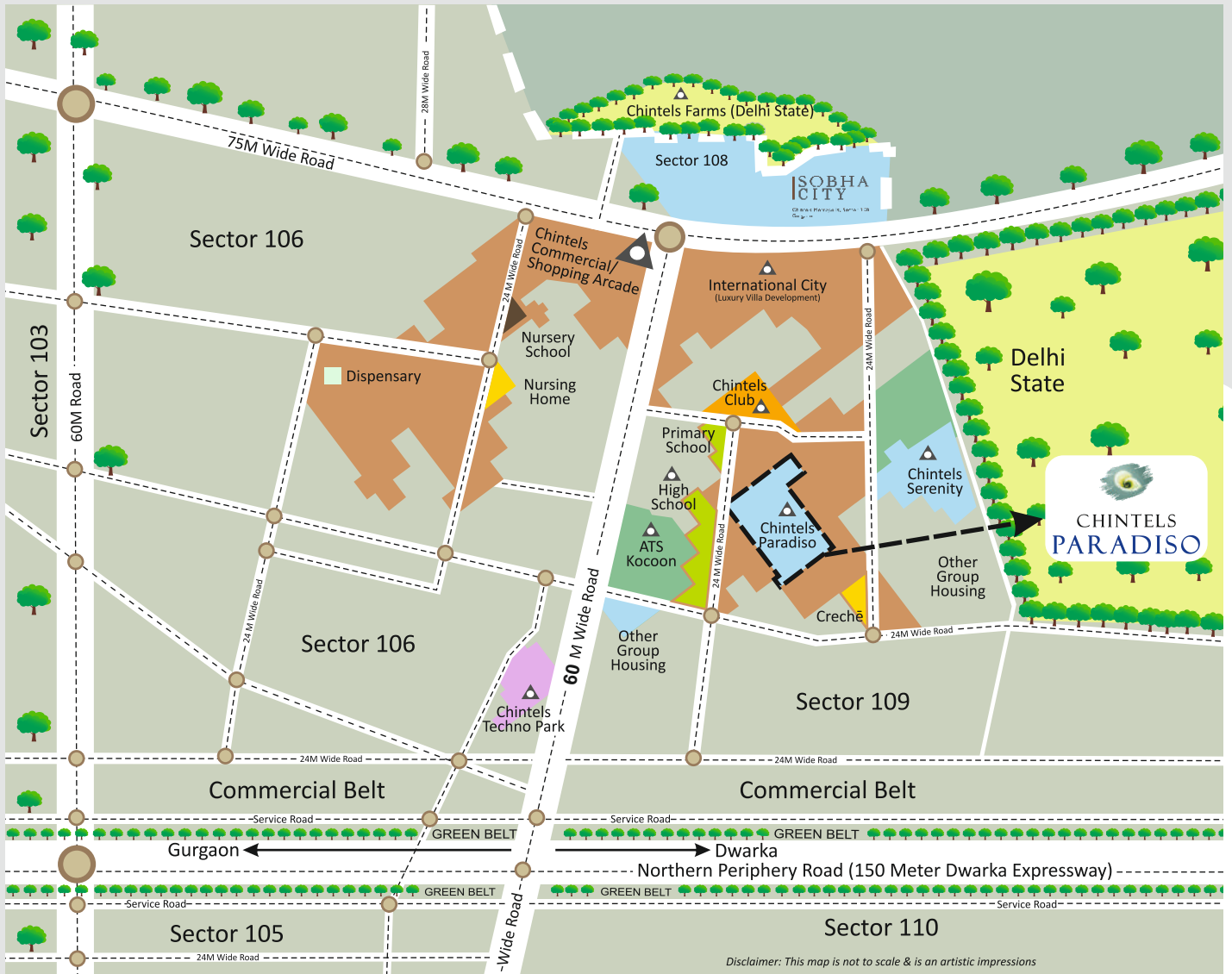
Nine high-rise towers of 3 and 4 BHK apartments with world-class amenities, surrounded by beautiful landscapes and luxurious villas. Uniquely and strategically conceived to fulfill every need of yours, it is a place to experience sophisticated and modern living. Chintels Paradiso is your peaceful abode.

[www.chintelsparadiso.com](http://www.chintelsparadiso.com)

# CHINTELS METROPOLIS

The Perfect Destination

CHINTELS METROPOLIS MAP



CHINTELS METROPOLIS, sprawling across 3 premium sectors of Gurgaon - Sector 109, 108 & 106 is a self-sustained area development by the Chintels Group which will provide premium housing and living environments.

CHINTELS METROPOLIS is a well-designed and landscaped area with tree-lined avenues, broad roads comprising of luxury residential villas and group housing projects. The area includes Chintels Paradiso, Chintels Serenity, Chintels Acropolis and the 168 acre International City along with other prime group housing projects. Chintels Metropolis will also have high quality Recreational areas, Educational and Healthcare facilities, Chintels Techno Park, Office complex, Shopping Arcade and other essential amenities.

# CHINTELS METROPOLIS

## The Perfect Location



A new Gurgaon is fast rising along the Northern Peripheral Road, the widest expressway in the country with its parallel metro rail line, connecting Dwarka to the National Highway 8. In this prime location are the exclusive real estate areas called CHINTELS METROPOLIS and CHINTELS COSMOPOLIS.

**Chintels Metropolis:** A premium area of luxurious residential and commercial infrastructure in Gurgaon, situated next to the lavish Chintels farm houses in Delhi and just a few kilometers away from Indira Gandhi International Airport.

**Chintels Cosmopolis:** This ultra-modern urban mixed use development area is emerging as the most favoured business destination in Gurgaon. The area comprising of high end commercial, retail, hotels and high-street markets is located on the Dwarka Expressway (Northern Peripheral Road), making it extremely well connected and accessible.

# AESTHETICALLY DESIGNED TO PROVIDE COMFORT AND LUXURY

Chintels Paradiso offers an elegant compilation of the finest set of interiors that are a perfect blend of comfort and convenience. Every home in Chintels Paradiso has been planned with spacious living rooms, spacious bedrooms, large balconies, windows which allow maximum natural light and free flow of pure air along with stunning views of the landscape around.



- 3 & 4 BHK Apartments • Luxurious Living and Dining Rooms • Spacious Bedrooms with attached Toilets • Modern Modular Kitchen



In the hustle-bustle of the modern world, our residents find sanctuary in the Paradise Club - a place to unwind and work out or just to sit back and relax.

Just a few steps across your home, the Paradise Club is the perfect place to entertain you and your family with a range of facilities that are necessary to live an active life. Enjoy a game of cards with your close friends or take a few dips in the pool with your kids. Get into shape at the well equipped gymnasium and recharge yourself at the spa for holistic well being. The multi-utility hall is ideal for hosting celebrations and parties.



- Spectacular Garden View • Yoga & Meditation • Gym • Swimming Pool
- Tennis Court • Squash Court • Billiards Room

# SITE PLAN

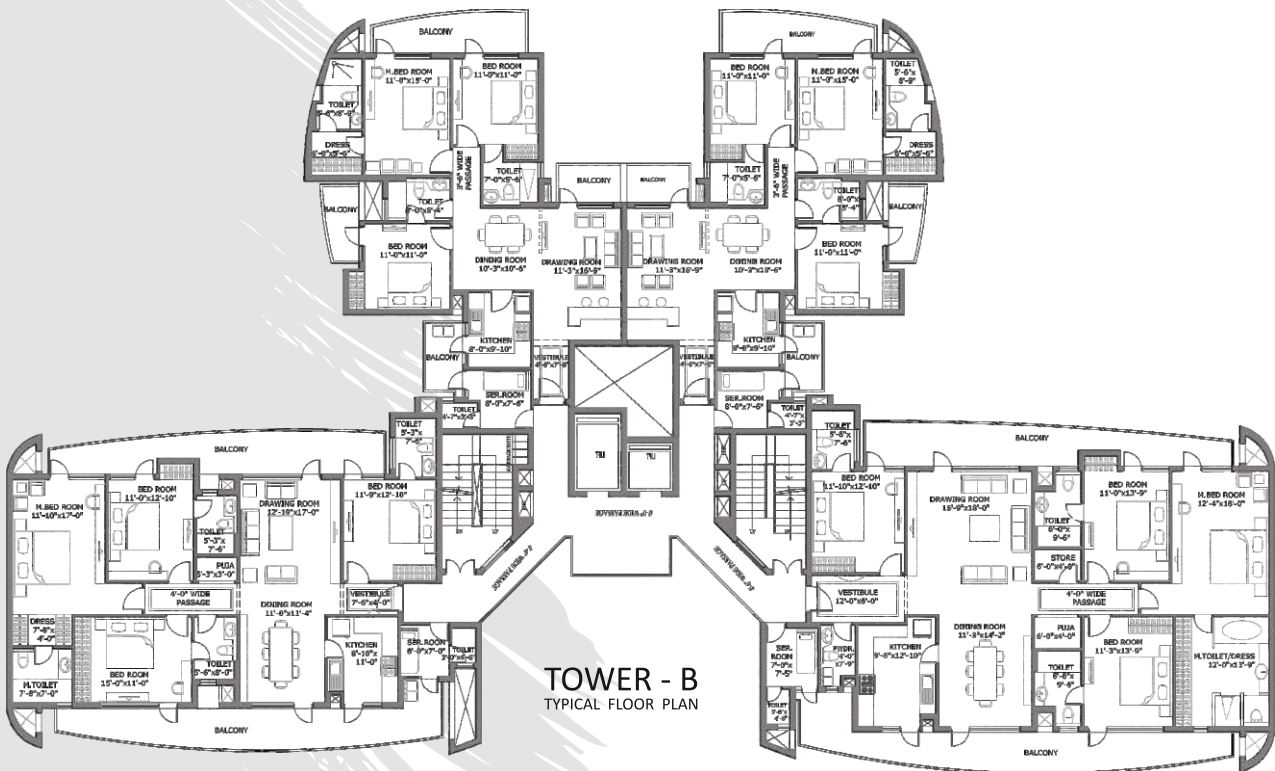
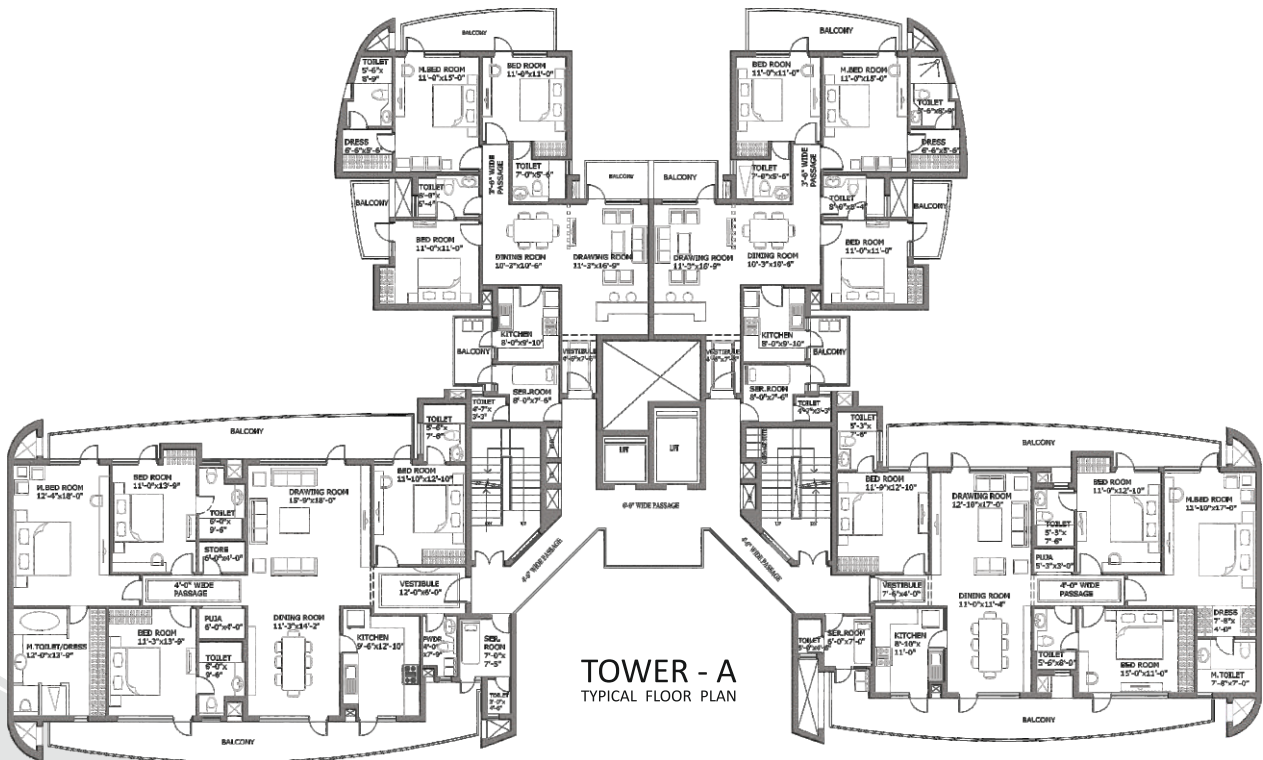


- ① Nursery School    ② Skating Rink    ③ Tennis Court    ④ Paradise Club    ⑤ Swimming Pool    ⑥ Badminton Court
- ⑦ Basketball Court    ⑧ Children's Play Area    ⑨ Golf Green    ⑩ Central Landscape    ⑪ Main Entrance    ⑫ EWS

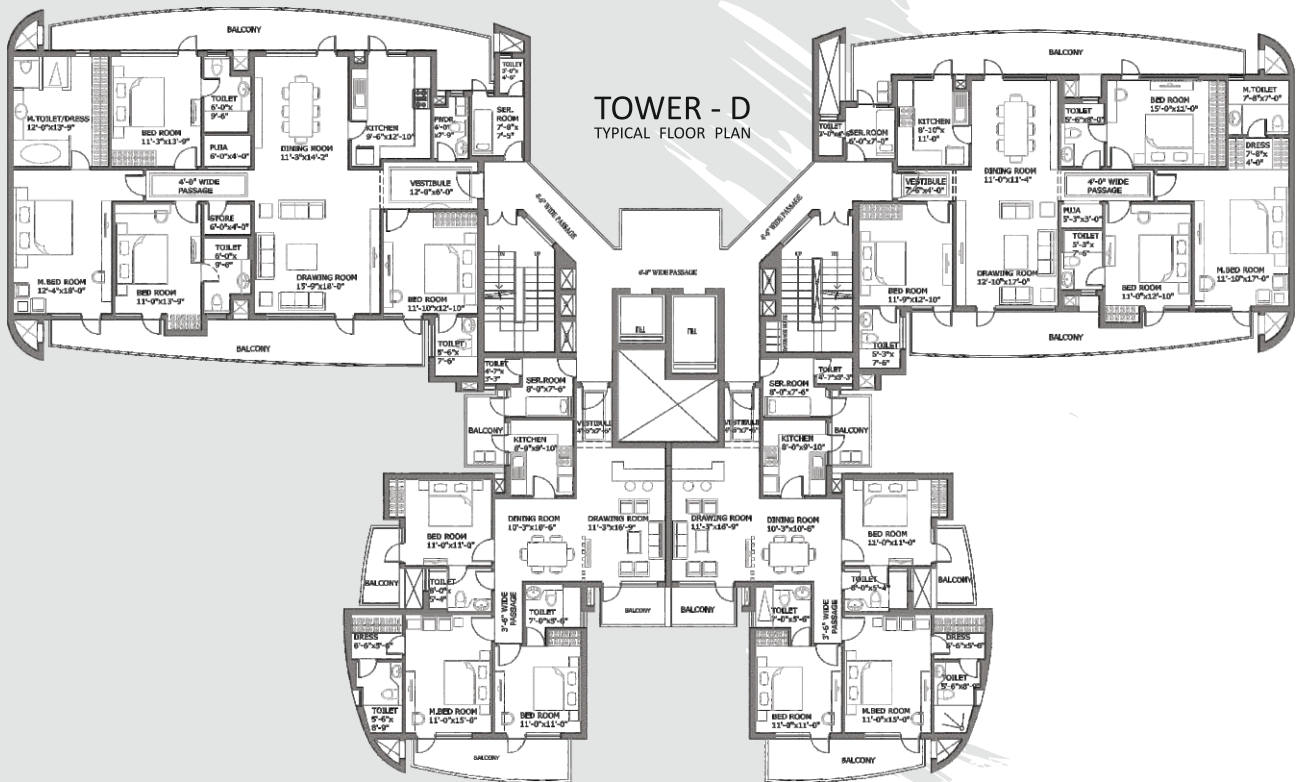
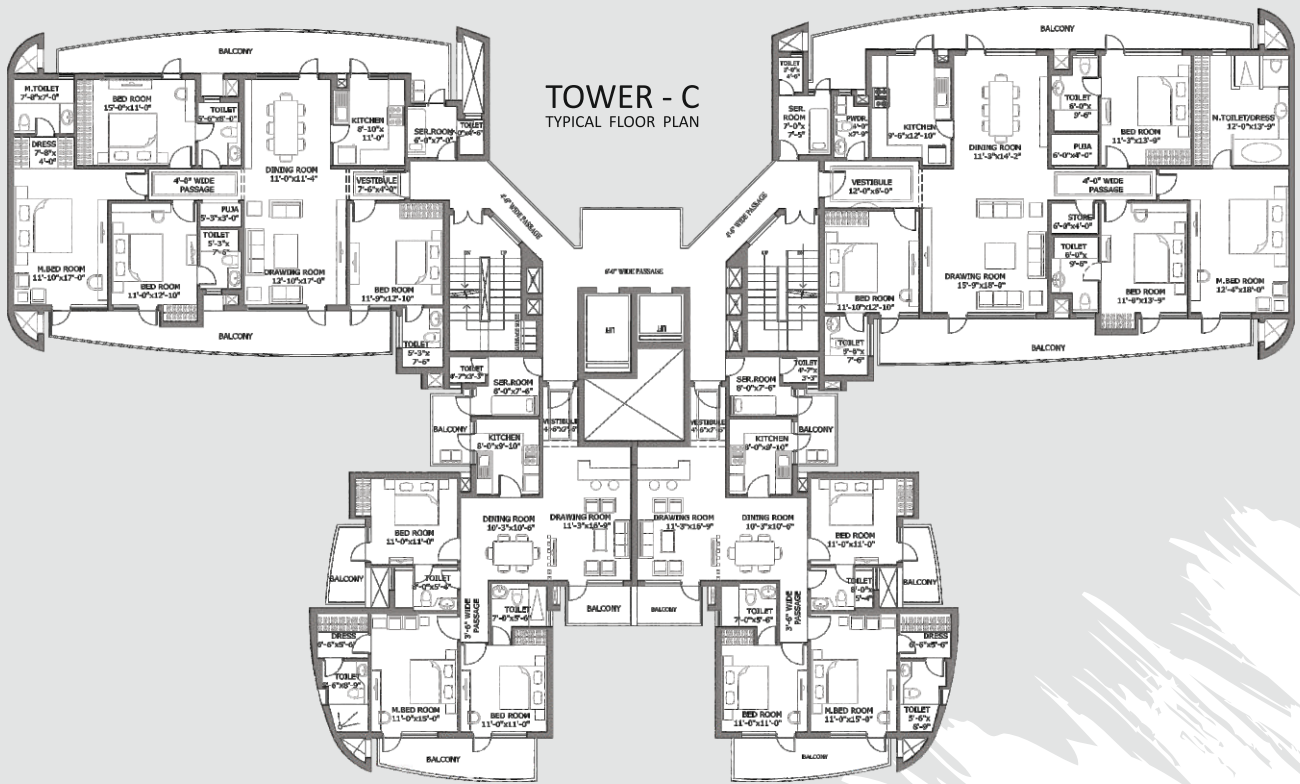




# FLOOR PLANS

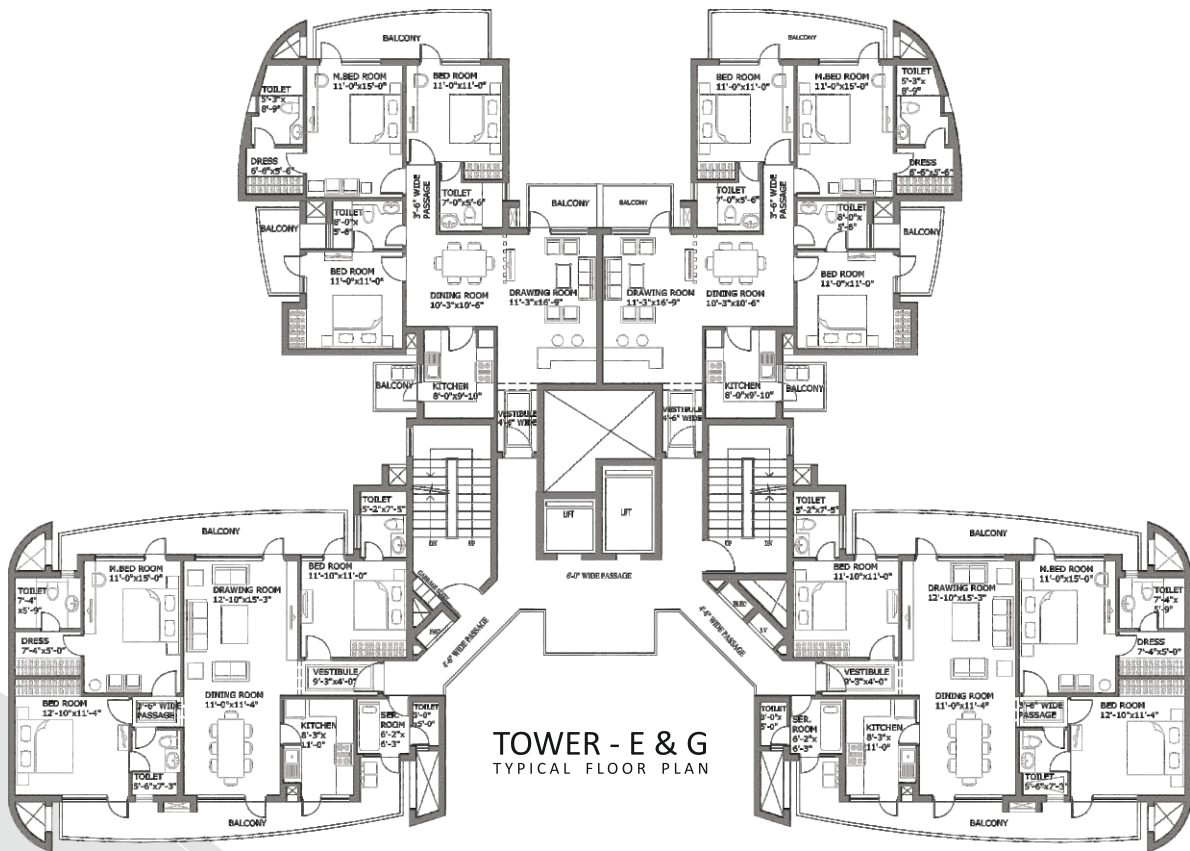


# FLOOR PLANS

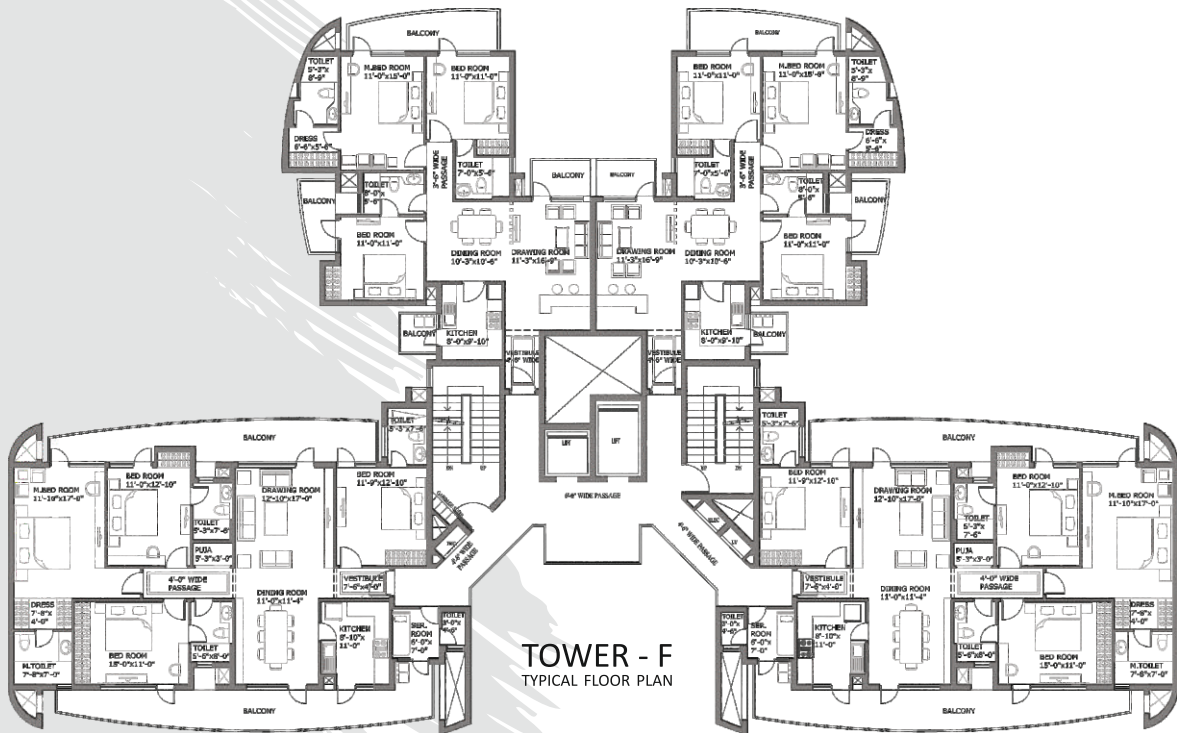




# FLOOR PLANS

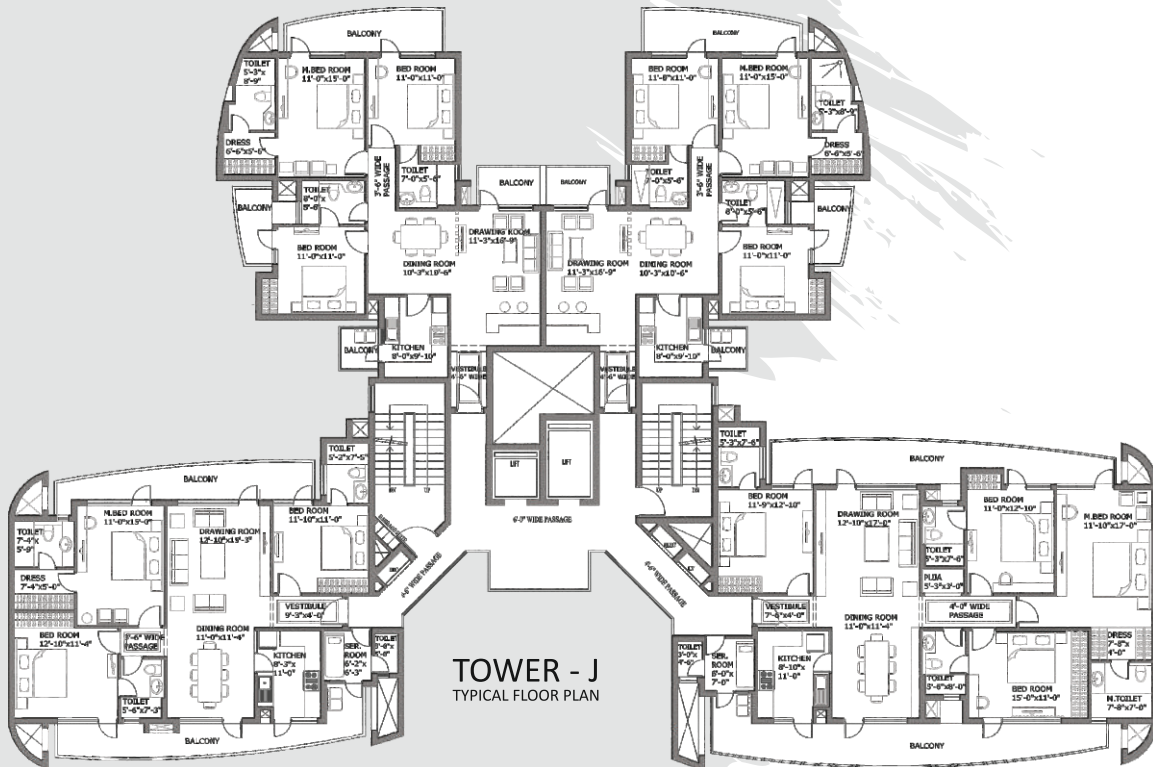
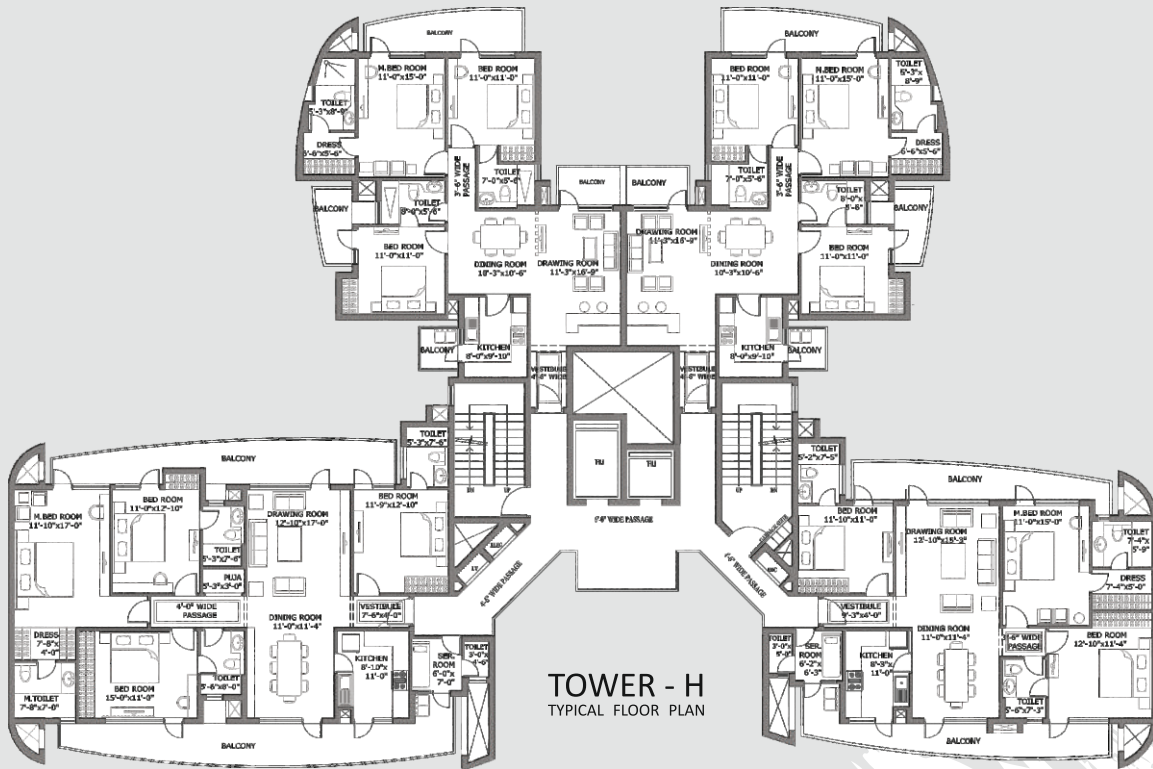


**TOWER - E & G**  
TYPICAL FLOOR PLAN



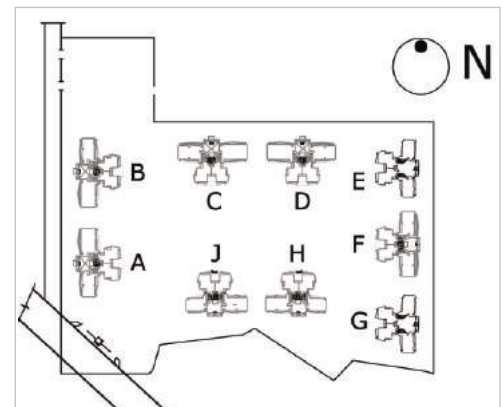
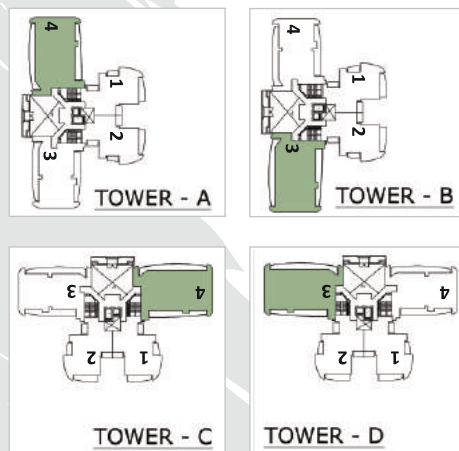
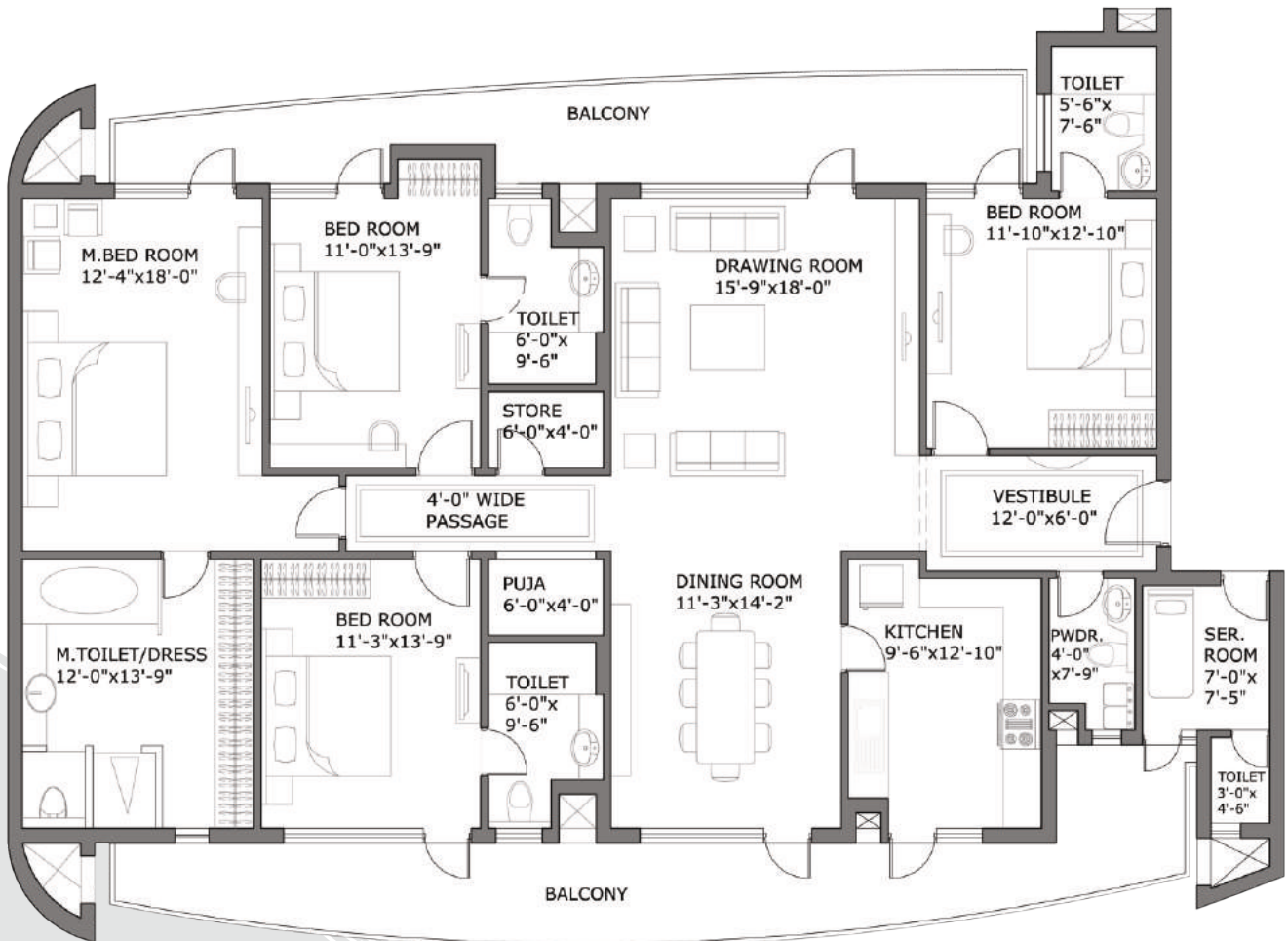
**TOWER - F**  
TYPICAL FLOOR PLAN

# FLOOR PLANS



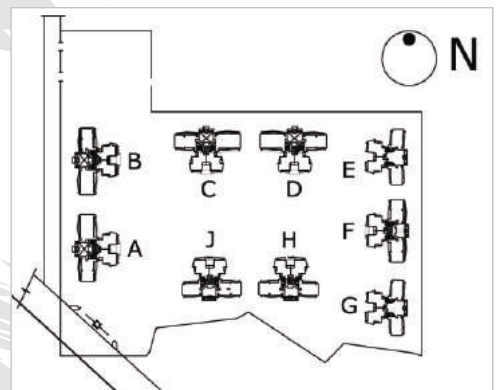
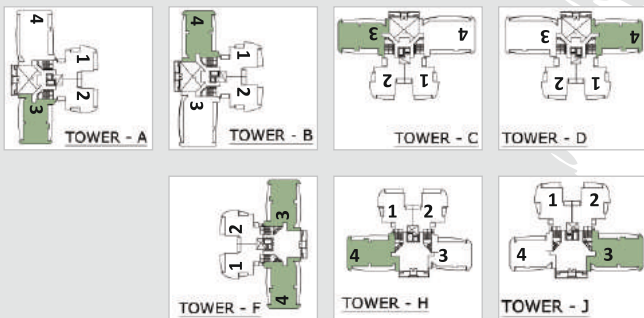
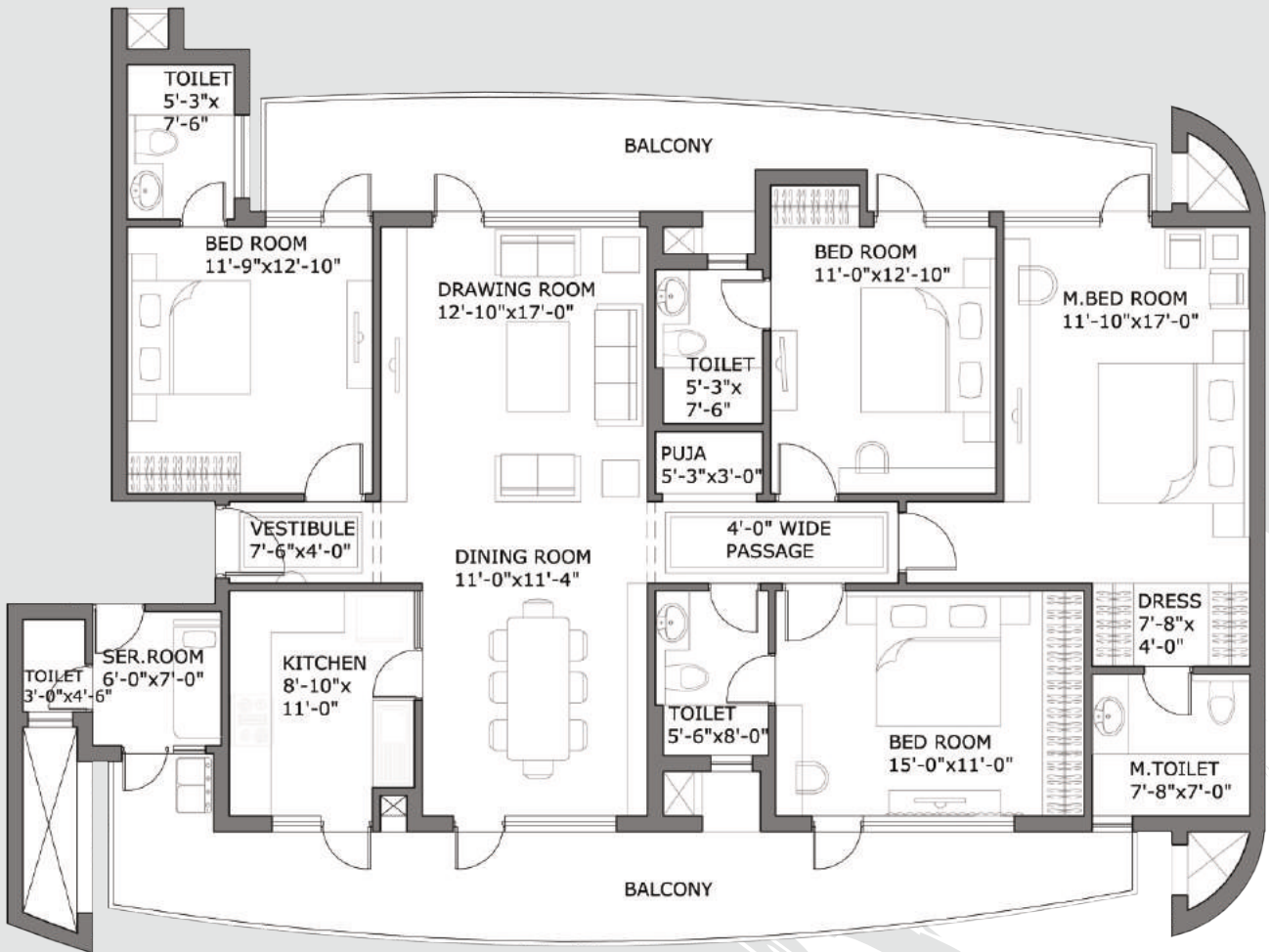


# UNIT PLAN



4BHK + 4 Toilet + SR Unit  
Saleable Area = 292.64 sq.mtr (3150 sq. ft. )

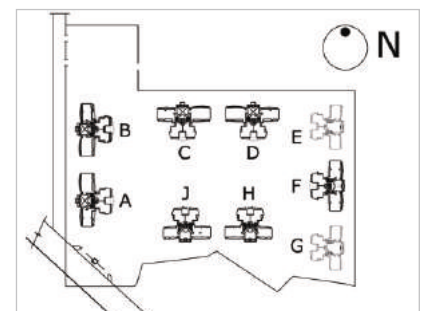
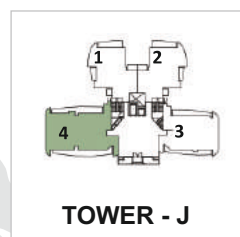
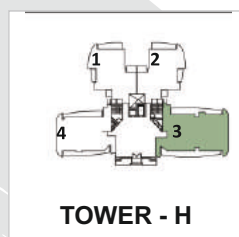
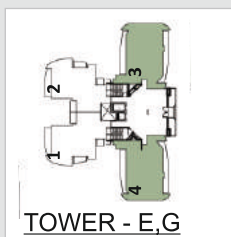
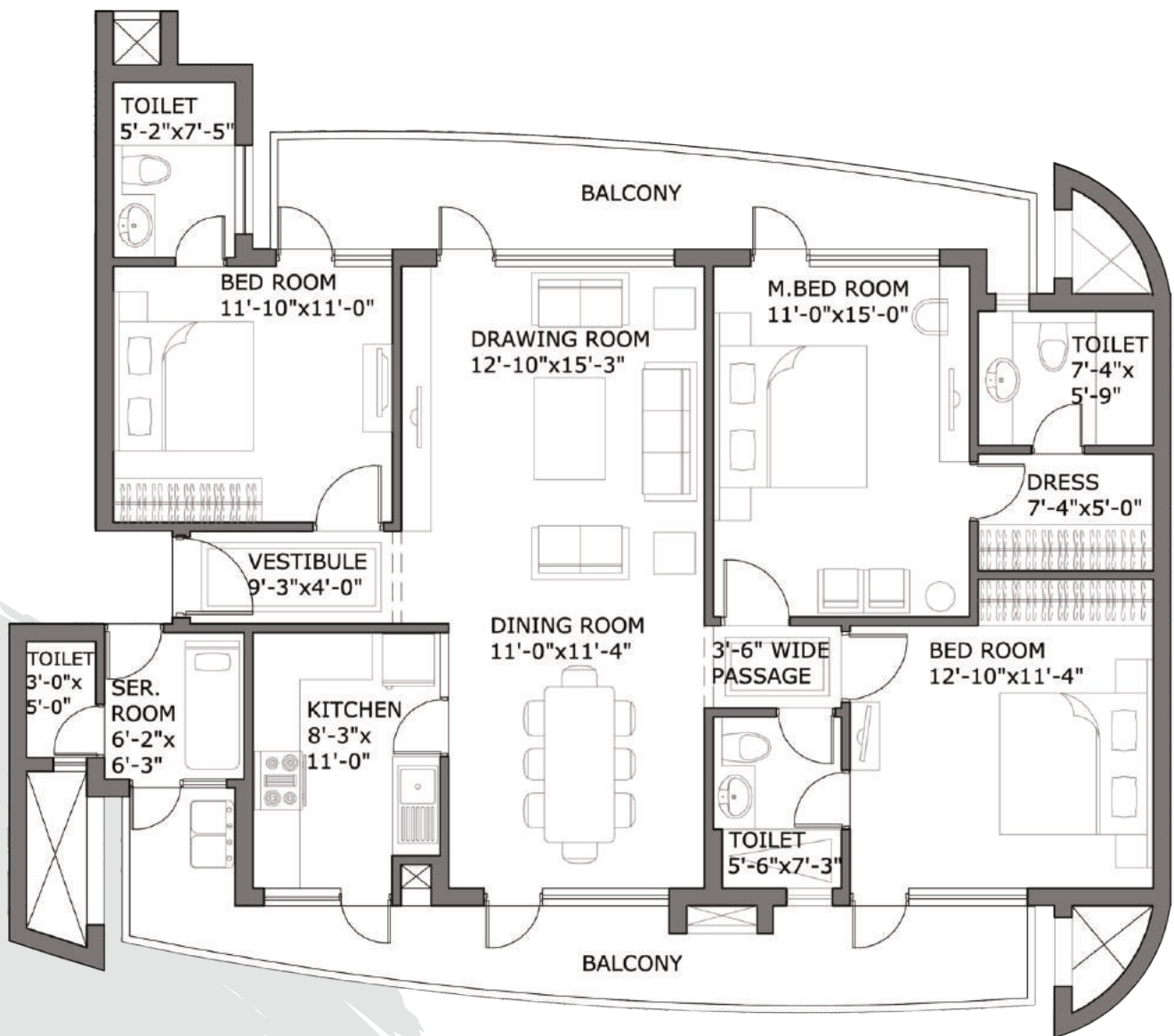
# UNIT PLAN



4BHK + 4 Toilet + SR Unit  
 Saleable Area = 244.33 sq.mtr (2630 sq. ft. )

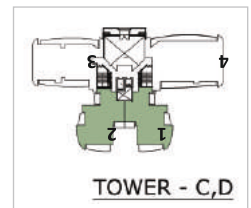
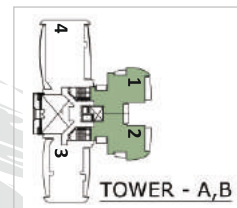
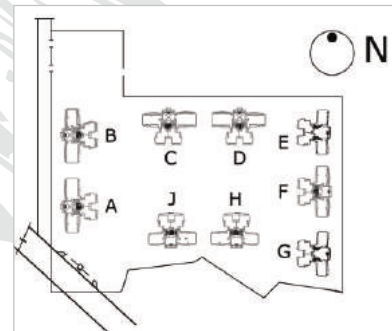
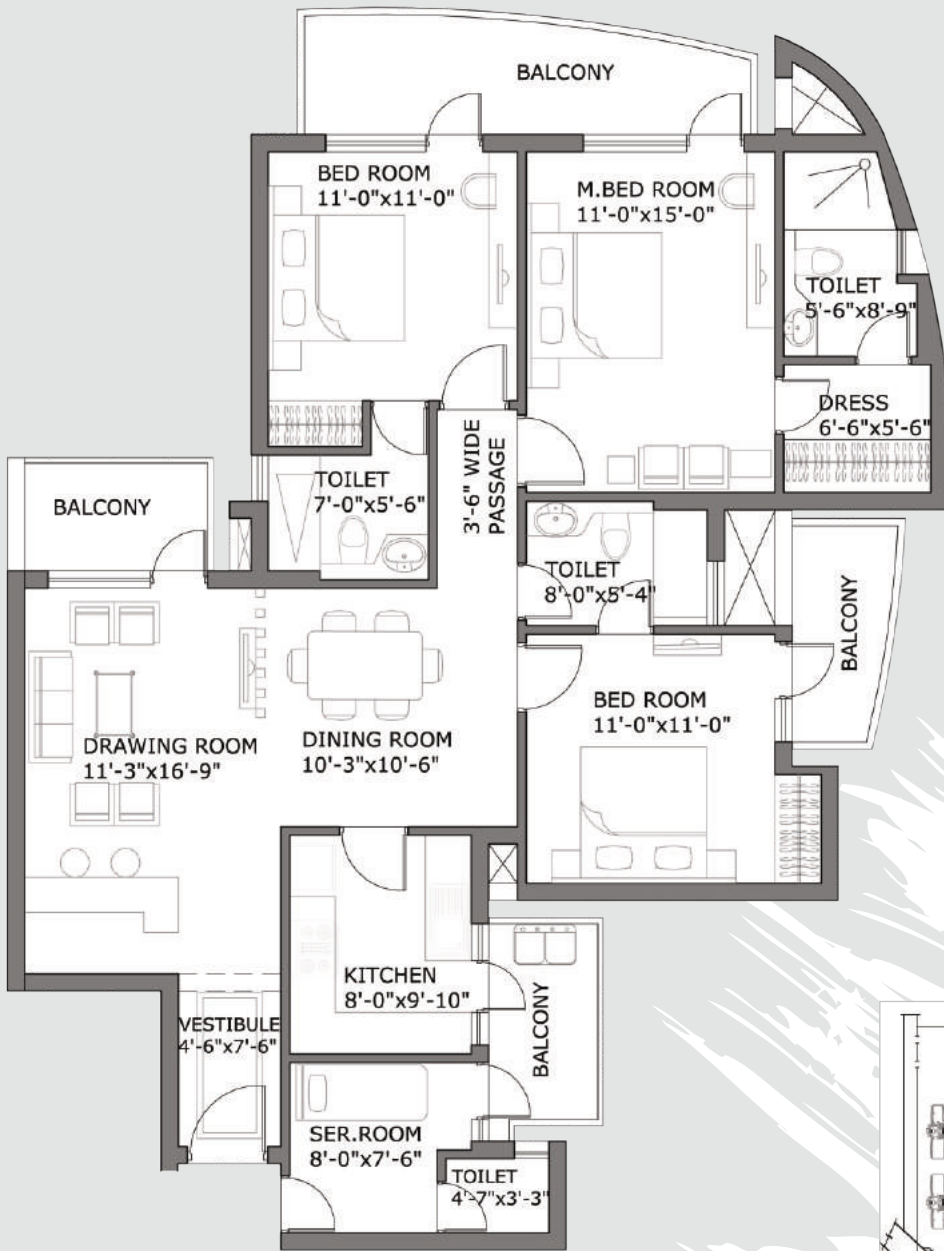


# UNIT PLAN



3BHK + 3 Toilet + SR Unit  
Saleable Area = 190.45 sq.mtr (2050 sq. ft. )

# UNIT PLAN

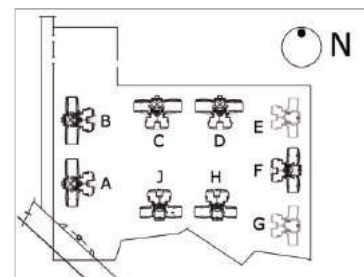
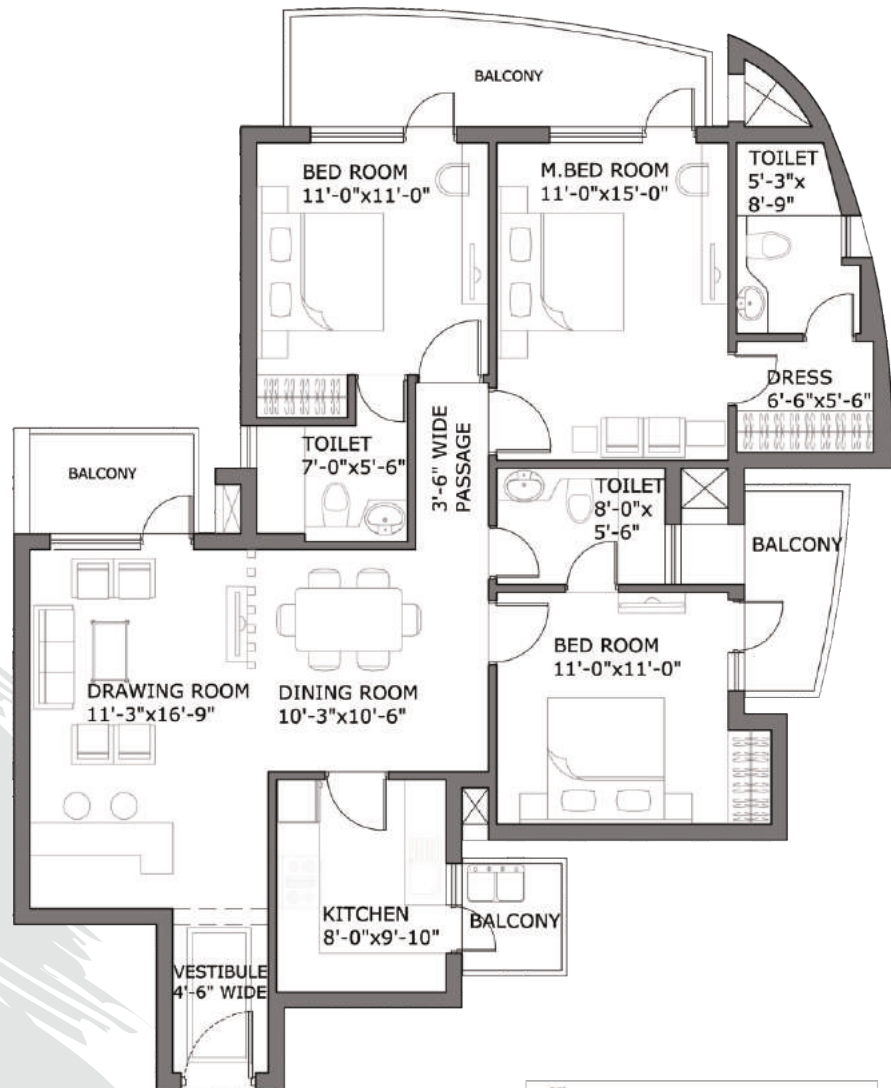
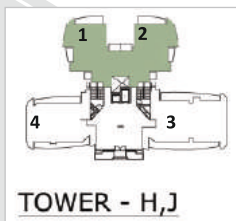
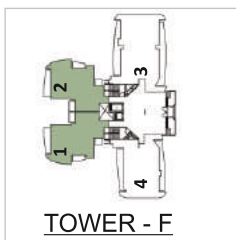
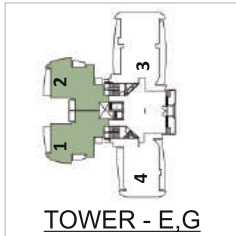


3BHK + 3 Toilet + SR Unit  
 Saleable Area = 171.87 sq.mtr (1850 sq. ft.)





# UNIT PLAN



3BHK + 3 Toilet Unit  
Saleable Area = 165.83 sq.mtr (1785 sq. ft.)

# \*SPECIFICATIONS

## Drawing & Dining Room

Fittings	:	Branded Split AC
Floor	:	Italian Marble
Walls	:	Smooth Surface with Wall Putty and Plastic Emulsion Paints
Ceiling	:	Oil Bound Distemper

## Bedrooms

Fittings	:	Branded Split AC
Floor	:	High Quality Vitrified Tiles / High Quality Laminated Wooden Flooring and Wooden Skirting
Walls	:	Smooth Surface with Wall Putty and Plastic Emulsion Paints
Ceiling	:	Oil Bound Distemper

## Kitchen

Floor	:	Anti-Skid Ceramic Tiles
Walls	:	Ceramic Tiles up to 2' above the Counter, Rest Smooth Surface with Oil Bound Distemper
Ceiling	:	Oil Bound Distemper
Fitting&Fixtures	:	Premium Branded Modular Kitchen with Hob & Chimney - Granite Counter Top - Stainless Steel Sink with CP Fittings

## Toilets

Floor	:	Anti-Skid Ceramic Tiles
Walls	:	Ceramic Tiles Dado and Oil Bound Distemper
Ceiling	:	Oil Bound Distemper
Fitting&Fixtures	:	Single Lever CP Fittings - Granite Counter - Premium Sanitary Wares - Provision for Exhaust Fan

## Servant Room

Floor	:	Ceramic Tiles
Wall & Ceiling	:	Oil Bound Distemper

## Balconies

Floor	:	Anti-Skid Ceramic Tiles
Wall	:	Weather Proof Paint
Ceiling	:	Oil Bound Distemper
Fittings&Fixtures	:	M.S Railing with Handrail

## Doors & Windows

Interiors	:	High Quality Hard Wood Frame with Flush Door Shutter and Hardware Fittings
External	:	High Quality Aluminum Powder Coated Doors, Windows and Ventilators

## Lift Lobbies/ Corridors

Floor	:	Marble/Granite
Walls	:	Marble/Granite/ Paint
Ceiling	:	Oil Bound Distemper
Fixtures	:	Decorative Lights

## Structure

Seismic Soundness	:	Earthquake Resistance RCC Framed Structure with External Brick/ Block Walls
External Finish	:	Appropriate Finish with Exterior Grade Water Proof Texture Paint

## Electrical

- Concealed Conduits with Copper Wires and Premium Modular Switches with Sufficient Points for Power and Lighting with Protective MCBs
- Provision for Cable TV and Telephone Sockets
- Provision for Split ACs in the Living Room and all Bedrooms

## Club & Sports Facilities

Swimming Pool with Change Rooms - Multipurpose Rooms - Well Equipped GYM with Steam Room - Cafeteria - Squash Court - Indoor and Outdoor Game Area - Yoga - Tennis Court - Skating Rink - Basketball Court - Golf Green - Jogging Track

## Amenities & Facilities

24 x 7 Power Backup - Round the Clock Three Tier High Tech Security with CCTV Perimeter Security with Security Control Room - Fire Detection and Fire Fighting System - Treated Water Supply - Provision for Piped Gas Supply - High Speed Elevators - Estate Office for the Round the Clock Maintenance Services - Nursery School - Super Market

## Environment Friendly Schemes

- Rain Water Harvesting System with Percolation Pits to Recharge the Ground Water Table
- Solar Lighting and Heating System for Conserving Energy
- Sewerage Treatment Plant

\*All specifications listed here will be provided in Tower A & Tower B only and conditions apply.

Disclaimer: These does not constitute a legal offer. All site plans, floor plans, areas, dimensions, specification, etc. are subject to change at the sole discretion of the developers till final completion of the project. Soft furnishing, furniture and gadgets are not part of the offering. All pictures & elevations in this brochure are indicative images and are artistic rendering.