



WYNNUM COMMUNITY PLACE

Over 4,320 sessions were held through Wynnum Community Place Emergency Relief project during June 2021 to June 2024. Providing much needed food and financial support.

4,320

CLIENTS SUPPORTED WITH EMERGENCY RELIEF



COMMUNITY MEALS

15,480

SERVED TO THE PEOPLE OF WYNNUM/MANLY

KG OF FRESH FRUIT AND VEGETABLES

25,080 KG

PROVIDED TO THE PEOPLE OF WYNNUM/MANLY



COFFEE AND GAMES

3,600

COFFEES Poured OVER A FRIENDLY CHAT

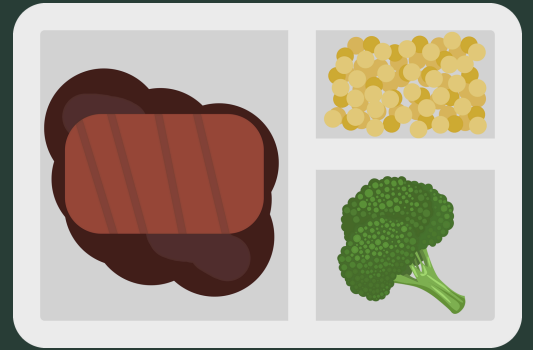


WYNNUM COMMUNITY PLACE

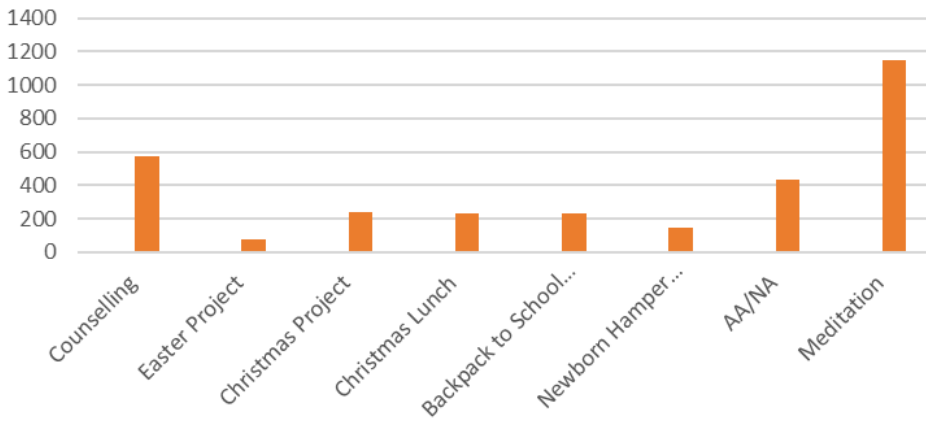
FROZEN MEALS

3,340

FROZEN MEALS PROVIDED



Community Events/Projects/Programs



From 2021 until June 2024, Wynnum Community Place assisted over 1,152 residents meditate, provided over 576 counselling sessions, assisted 432 people during AA/NA, Provided gifts for over 240 children at Christmas, provided a Christmas lunch for over 230 residents, supported 230 children with back-to-school supplies, Supported over 144 new parents with baby essentials and provided over 80 children easter Egg bags.

HOMELESS SUPPORT

LAUNDRY SERVICES PROVIDED



SHOWERS PROVIDED

432



720





WYNNUM COMMUNITY PLACE

Assisted over 1,500 residents with the ability of FREE clothes with Wynnum Community Place Pop up Shops.

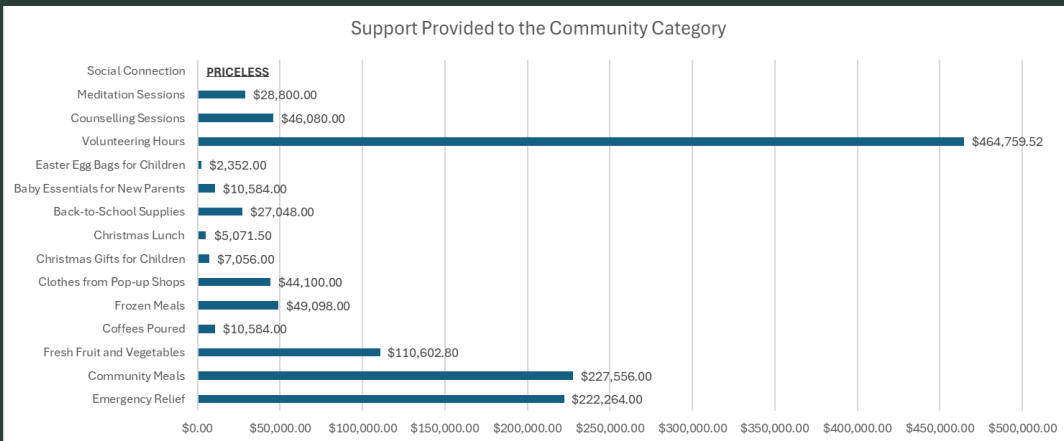
1,500 ATTENDEES AT OUR POP UP SHOPS



From 2021 until June 2024, Wynnum Community Place held many events with some being International Women's Day with over 80 people attending, Thank you afternoon tea with 25 in attendance and the Vaxseen project having 12 people attend.



TOTAL FUNDING RECEIVED vs OUTCOME



June 2021 - July 2024

TOTAL PROVIDED BACK TO THE COMMUNITY

\$1,256,955.82

VS

FUNDING RECEIVED

\$93,380

JUNE 2021 - MARCH 2022

WANT TO KNOW HOW YOU CAN HELP?

Join us in making a difference! Wynnum Community Place needs your support to continue helping our community members who are facing tough times. Together, we can bring hope and assistance to those who need it most.



TOGETHER WE CAN DO MORE

If **YOU** want to help, contact
info@redlandcommunitycentre.org