

WYNNUM COMMUNITY PLACE



OPENING HOURS

Monday	CLOSED
Tuesday	9am - 3pm (ER 10am - 2pm)
Wednesday	CLOSED
Thursday	9am - 3pm (ER 10am - 2pm)
Friday	CLOSED
Weekends/Public Holidays	CLOSED

55 BERRIMA STREET, WYNNUM

Phone: 07 3387 2224

Website: www.redlandcommunitycentre.org



WHO ARE WE?

- An established, centralised Community Hub offering food relief, financial assistance, weekly breakfast and dinners, community events, and support.
- A space for local services and organisations to connect with community.
- Access to the supports YOU need in Wynnum or a referral to where you need to go - all from the one place!

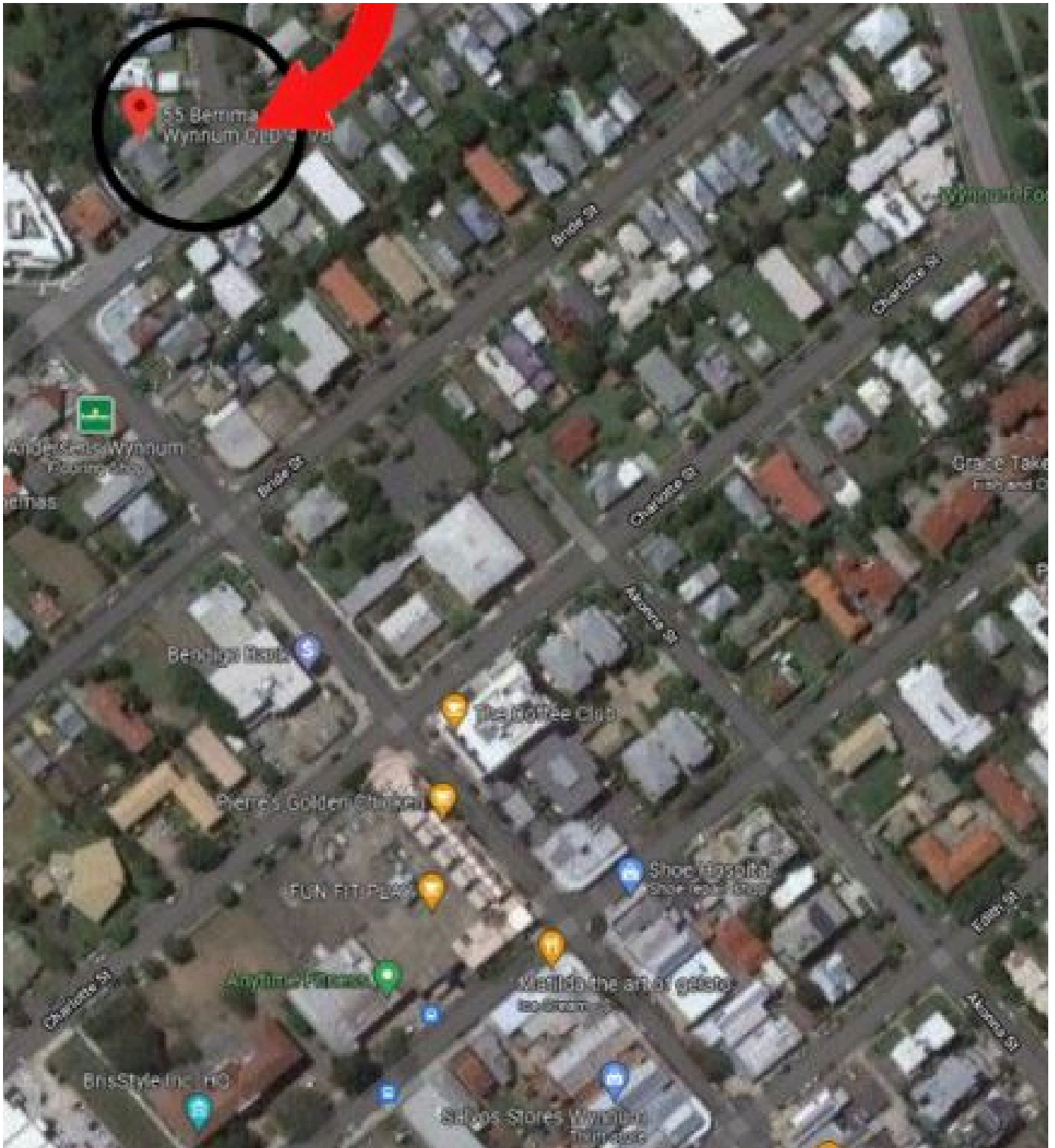


Wynnum Community Place (WCP) is a non-funded non-profit community based community organisation. WCP is an entity of Redland Community Centre, a registered charity with head office in Capalaba.

WHERE ARE WE?

55 BERRIMA STREET, WYNNUM

PHONE: (07) 3387 2224



OPENING TIMES

WYNNUM COMMUNITY PLACE

DOORS OPEN

Monday: CLOSED

Tuesday: 9:00am to 3:00pm

Wednesday: CLOSED

Thursday: 9:00am to 3:00pm

Friday: CLOSED

Weekends/Public Holidays: CLOSED



EMERGENCY RELIEF

Tuesday: **10:00am to 2:00pm**

Thursday: **10:00am to 2:00pm**



EMERGENCY RELIEF

TUESDAYS & THURSDAYS

10AM TO 2PM

- Emergency Relief (ER) is the provision of material or financial assistance to people in crisis. Individuals and families access ER to help them through a 'one off' episode. For others, ER becomes part of their solution to manage ongoing complexities and disadvantage.
- ER is to assist people experiencing a crisis in a way that maintains their dignity and encourages self-reliance and to support clients towards self-sustainability.

Subject to funding. Items may vary and are all subject to availability.



WHAT WE MAY BE ABLE TO ASSIST WITH

Fresh Food (Fruit/Veggies/Meat)

Hot/frozen meals

Staples (Soup, Cereal, Tuna, Milk, Fruit, Noodles)

Medical Scripts

Other - **please ask for additional support as needed**

CHANGING LANES

TUESDAYS 9:00AM – 12:00PM



Changing Lanes is a **FREE** weekly event where community can connect with a range of local Wynnum services and programs.

Wynnum Community Place

55 BERRIMA STREET, WYNNUM

- BBQ
 - Fresh fruit & veggies
 - Coffee and Conversation
 - A range of local services and programs to connect with
- *subject to change and available resources**

Check our Facebook page for updates



FREE COUNSELLING

SERVICE

A counselling service is a professional support service that provides emotional and mental health support to individuals who are facing personal challenges or difficulties.

For More Information:



3245 2117



55 Berrima Street,
Wynnum

DAYS OF DELIVERY

FORTNIGHTLY THURSDAY
12.30 NOON TO 3.00PM

BOOKED APPOINTMENTS ONLY
PHONE: 3245 2117

Face to Face at WCP...

Our Service:

- SELF REFERRAL
- NO MENTAL HEALTH PLAN NEEDED
- NO SESSION LIMITS

COMMUNITY MEALS



**Join us for a Community Meal &
Yarn every Tuesday
4.00pm - 5.30 pm
55 Berrima Street, Wynnum**

WCP - 'A Place for everyone'

Phone: (07) 3387 2224

COMMUNITY BREAKFAST

Wynnum Community Place invites you to join us on Thursdays for a free hot breakfast!

**Every Thursday
9:00am-11:00am**



55 BERRIMA STREET WYNNUM
073387 2224

FREE EVENT



MEDITATION

Weekly on Thursday



MEDITATION HELPS WITH
BALANCING EMOTIONS,
RELAXING THE NERVOUS
SYSTEM, AND
ENCOURAGING GOOD
MENTAL HEALTH.
A BEAUTIFUL WAY TO
BRING FLOW INTO OUR
DAILY LIVES

***YOGA MAT OPTIONAL**

55 BERRIMA STREET WYNNUM

FOR MORE INFORMATION ABOUT MEDITATION
PLEASE FEEL FREE TO CONTACT WYNNUM
COMMUNITY PLACE OR ALLIE DIRECTLY AT:
WWW.FACEBOOK.COM/EVERYDAYGOODTHERAPY

VISTING SERVICES

Tuesdays

Orange Sky

Every **Tuesday from 2pm to 4pm**, the Orange Sky Laundry and Shower van sets up at Wynnum Community Place, providing free laundry and shower services to those in need. Whether you are experiencing homelessness, in crisis, or socially disadvantaged, They're here to help restore dignity and provide a bit of comfort in challenging times. Come, refresh yourself and your clothes, and experience the warmth of the Wynnum community. No bookings required.



WOULD YOU LIKE TO VOLUNTEER WITH US?

ASK US ABOUT WHAT VOLUNTEERING ROLES ARE AVAILABLE FOR YOU

- Are you looking for a volunteering experience that matches your needs, skills, and experience and can fit in with any time constraints you may have?
- Would you like to be involved in a trusted, long-serving NFP community organisation that has been making a positive difference in Wynnum and the Bayside for over 20 years?
- Volunteers are vital to the ongoing delivery of our programs, projects and provision of free services to the community.
- We need your help to continue to achieve our Vision of 'Building Resilience, Community and Capacity'.
- If you would like to experience what being a volunteer at the Centre is all about and become involved in your community please contact our Volunteer Coordinator

volunteer@redlandcommunitycentre.org

Phone **3245 2117**

WANT TO KNOW HOW YOU CAN HELP?

Wynnum Community Place is always looking for sponsors, partnerships and collaborations to help those in our community doing it 'tough'.



TOGETHER WE CAN DO MORE

**If YOU want to help, contact
info@redlandcommunitycentre.org**

OUR DETAILS

WYNNUM COMMUNITY PLACE

55 Berrima Street Wynnum

PH: (07) 3387 2224



REDLAND COMMUNITY CENTRE

29 Loraine Street Capalaba

PH: 3245 2117

E: info@redlandcommunitycentre.org

www.redlandcommunitycentre.org





'A Place for Everyone'



55 Berrima Street, Wynnum 4178

Ph: (07) 3387 2224