

Affordable Apartments Kitengela

This development comprises 2 and 3 bedroom low-rise apartments ideal for a family set-up in Kitengela. It's in a well-planned gated community with immediate accessibility from the main road. It also boasts of a Convenience Centre with a proposed supermarket and other essential retail services creating a one-stop shop for residents.

Phase 1 handover in a few weeks to July 2023 and Phase 2 is currently under construction.



CALL / WHATSAPP 0743 466 209 / 0757 488 833 TO BOOK A UNIT

✉ info@rentscore.africa 🌐 rentscore.africa

Amenities



Shopping Center



Kindergarten



Ample Open Spaces



Parking



Borehole



CCTV

The project is conveniently located close to:

- East African University
- The Riverine Mall



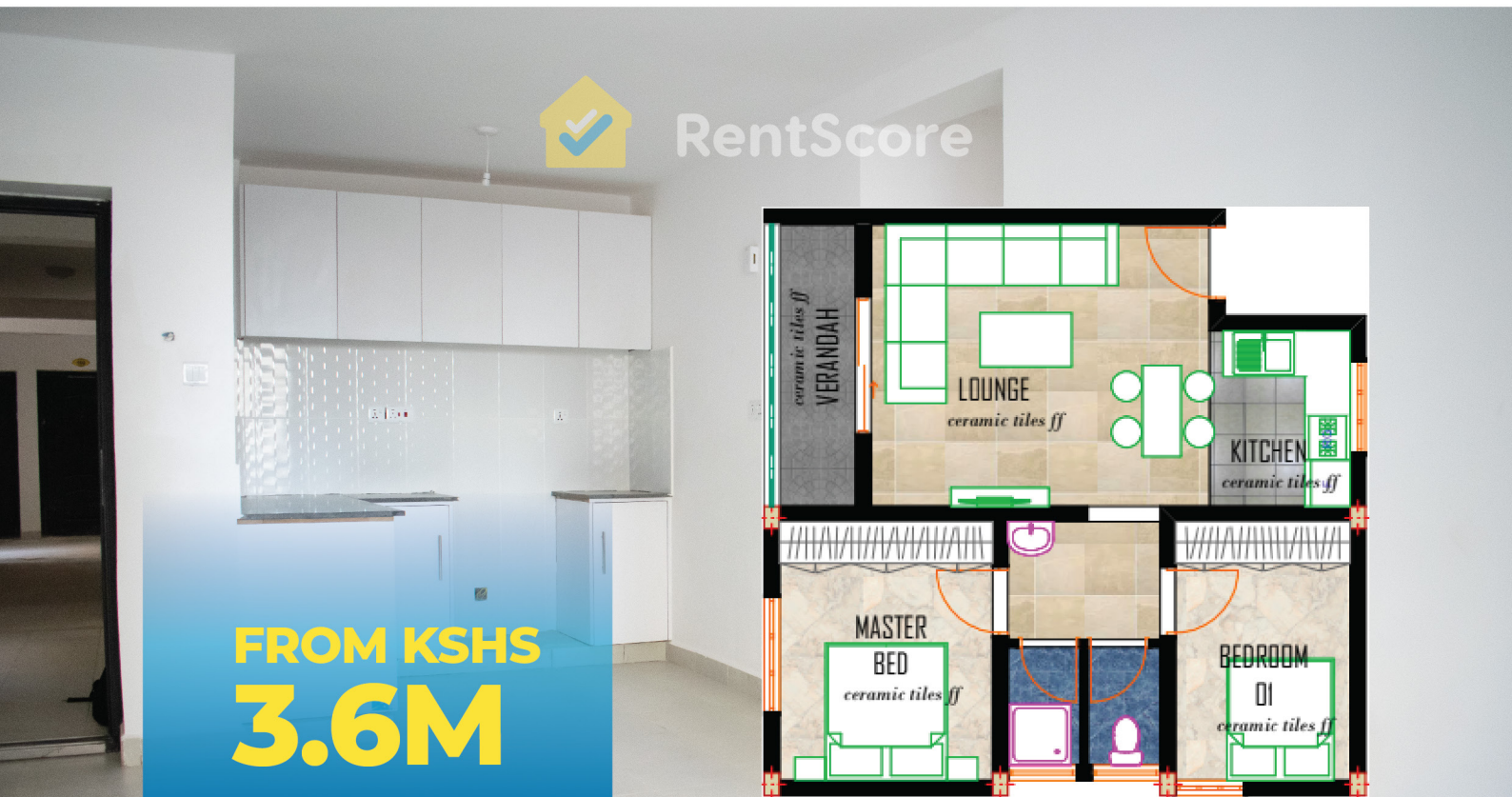
CALL / WHATSAPP 0743 466 209 / 0757 488 833 TO BOOK A UNIT

✉ info@rentscore.africa 🌐 rentscore.africa

One Bedroom - 50 sqm



Two Bedroom - 65 sqm



CALL / WHATSAPP 0743 466 209 / 0757 488 833 TO BOOK A UNIT



info@rentscore.africa



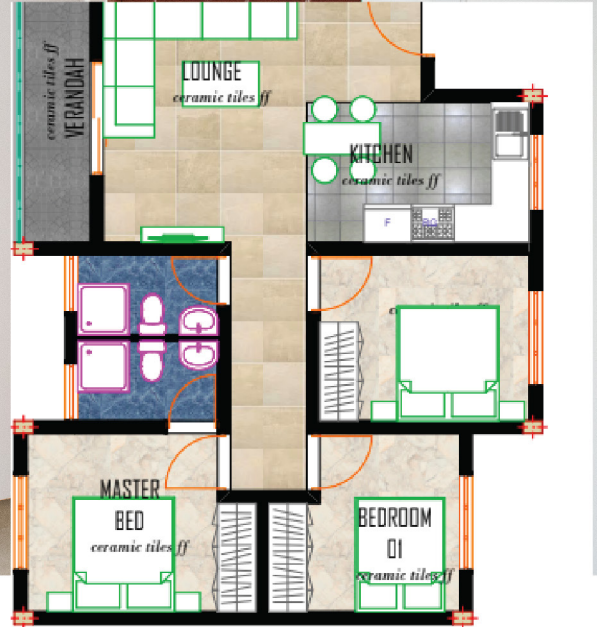
rentscore.africa

Three Bedroom - 90 sqm



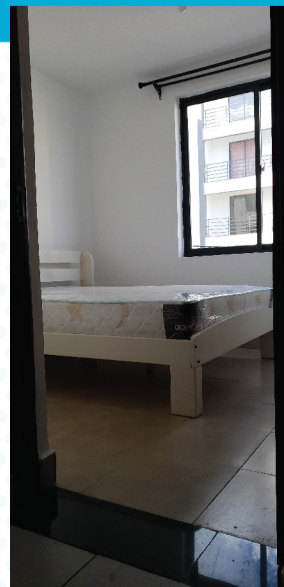
RentScore

FROM KSHS
4.8M



Phase 1 Handover in July 2023

ONLY A FEW UNITS REMAINING



Phase 2 is currently under construction with completion expected in the 2nd half of 2024.

CALL / WHATSAPP 0743 466 209 / 0757 488 833 TO BOOK A UNIT



info@rentscore.africa



rentscore.africa

Investment Profile

Type	Size	Price	Expected Rent (Ksh.)	Annual Yield
1 bedroom	50 sqm	Kshs. 2.5M	18,000	8.64%
2 bedroom	65 sqm	Kshs. 3.6M	25,000	8.33%
3 bedroom	90 sqm	Kshs. 4.8M	26,500	6.63%

Payment Plans

Instalment Payment Plan:

20% deposit and 80% balance payable across the construction period.

Type	Size	Price (Kshs.)	20% deposit (Kshs.)	80% balance
1 bedroom	50 sqm	2.5M	500,000	2,000,000
2 bedroom	65 sqm	3.6M	720,000	2,880,000
3 bedroom	90 sqm	4.8M	960,000	3,840,000

Mortgage Payment Plan:

RentScore works with multiple banks to facilitate affordable mortgages at 9.5% per annum:

- 20% deposit and 80% balance payable by the bank at end the of construction.
- The buyer will start paying the bank after the house has been handed over to them.

Type	Size	Price (Kshs.)	20% deposit (Kshs.)	80% balance monthly repayments (Kshs.)		
				5yr repayment	10yr repayment	15yr repayment
1 br	50 sqm	2.5M	500,000	42,004	25,880	20,885
2 br	65 sqm	3.6M	720,000	60,486	37,267	30,074
3 br	90 sqm	4.8M	960,000	80,648	49,689	40,099

CALL / WHATSAPP 0743 466 209 / 0757 488 833 TO BOOK A UNIT

✉ info@rentscore.africa 🌐 rentscore.africa

Invest in Your Future



CALL / WHATSAPP

0743 466 209

0757 488 833

FOR VIEWING

✉ info@rentscore.africa 🌐 rentscore.africa