	<b>TECHNOLOGICAL UNIVERSITY OF THE PHILIPPINES</b> Ayala Blvd., Ermita, Manila, 1000 Philippines Tel No. +632-301-3001 local 709   Fax No. +632-521-4063 Email: quality@tup.edu.ph   Website: tup.edu.ph	Index No.	PM-PZC-10.1.1
		Issue No.	01
		Revision No.	01
	<b>PROCEDURES &amp; WORK INSTRUCTIONS MANUAL</b>		Date
Section 10	<b>PASUC ZONAL CENTER PROCEDURE</b>	Page No.	1 / 3
Subject 10.1.1	<b>Qualitative Contribution Evaluation</b>	QAC No.	CC-062220

**Purpose:**

This documented information is determined, maintained, and retained to the extent necessary to have confidence that the qualitative contribution evaluation procedure, under the PASUC Zonal Center, is carried out as planned. This is to demonstrate the conformity of products and services delivered/rendered therein, in compliance to TUP policies, customer, and statutory/regulatory requirements.

**Scope:**

As externally-provided service, this procedure applies to all relevant offices/sub-processes under the PASUC Zonal Center, and other interested parties.

**Responsibility and Authority:**

The Director of PASUC Zonal Center is responsible in the effective implementation of this procedure at reasonable time frame, duly verified and approved by the PASUC President or relevant authorities.

The Quality Management Representative (QMR), through the Quality Assurance Office shall ensure the conformity of the externally provided service, compliant to University policies, and statutory or regulatory requirements. He shall serve as liaison in any quality-related activities.


A certificated ISO 9001:2015 Lead Auditor shall conduct second-party quality audit at planned intervals to ensure conformity of products/services offered by PASUC Zonal Center.

**References:**

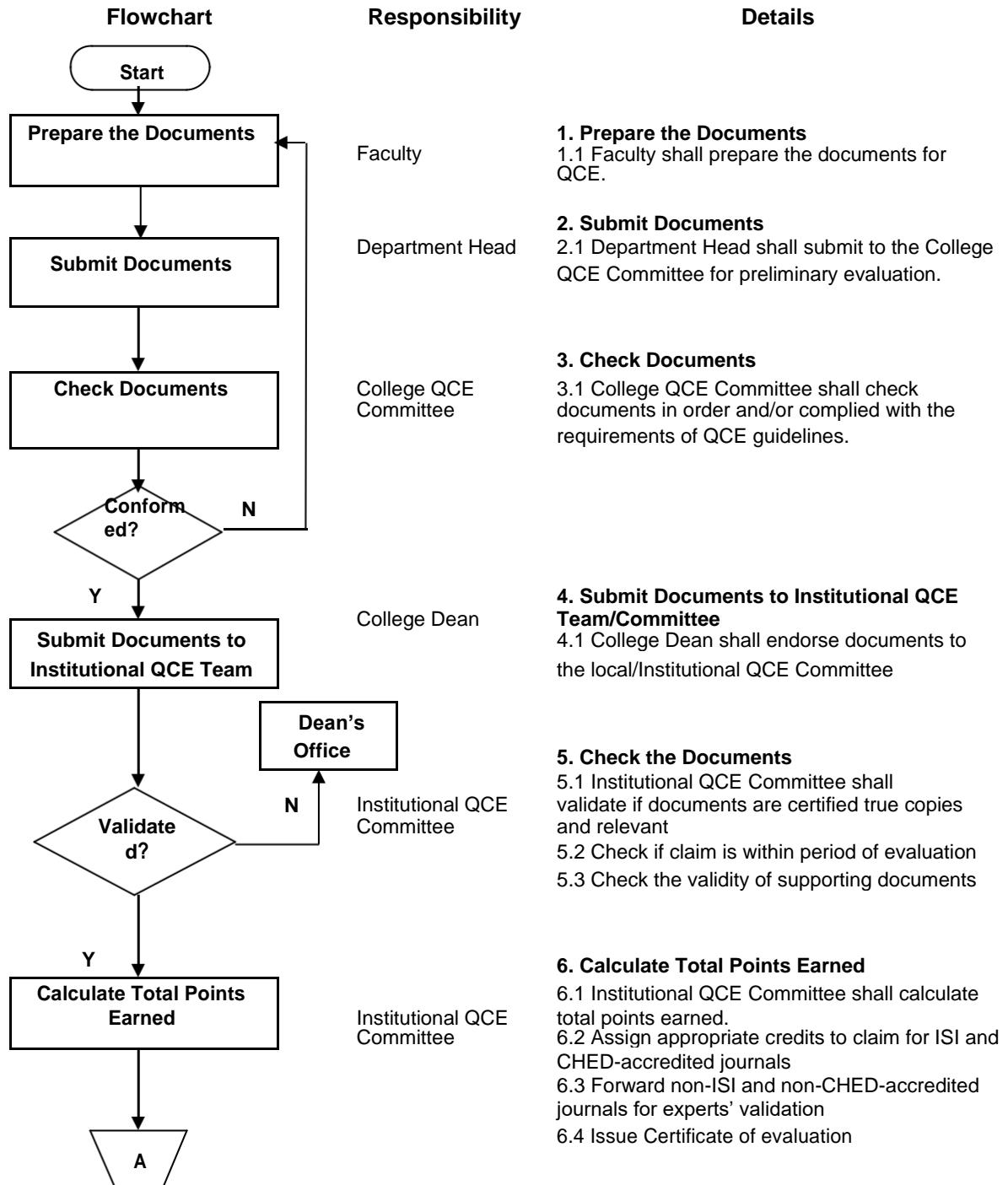
1. REF-HRM-EXT-NBC-CQE-NBC 461 QCE Guidelines
2. REF-QAA-INT-ORD-TUP Order No. 643 s. 2017 – Quality Management Representative
3. REF-QAA-INT-ORD-TUP Order No. 768 s. 2017 – Composition of ISO 9001:2015 Internal Auditors and Lead Auditor of TUP Manila

Prepared by:  
**(Sgd.) RALPH SHERWIN A. CORPUZ, Ph.D.**  
 Quality Management Representative  
 (QMR)/ Director of Quality Assurance

Conformed by:  
**(Sgd.) MELITA A. BACCAY**  
 Director, PASUC Zonal Center


	<b>TECHNOLOGICAL UNIVERSITY OF THE PHILIPPINES</b> Ayala Blvd., Ermita, Manila, 1000 Philippines Tel No. +632-301-3001 local 709   Fax No. +632-521-4063 Email: quality@tup.edu.ph   Website: tup.edu.ph	Index No.	PM-PZC-10.1.1
		Issue No.	01
		Revision No.	01
	<b>PROCEDURES &amp; WORK INSTRUCTIONS MANUAL</b>	Date	06192020
Section 10	<b>PASUC ZONAL CENTER PROCEDURE</b>	Page No.	2 / 3
Subject 10.1.1	<b>Qualitative Contribution Evaluation</b>	QAC No.	CC-062220

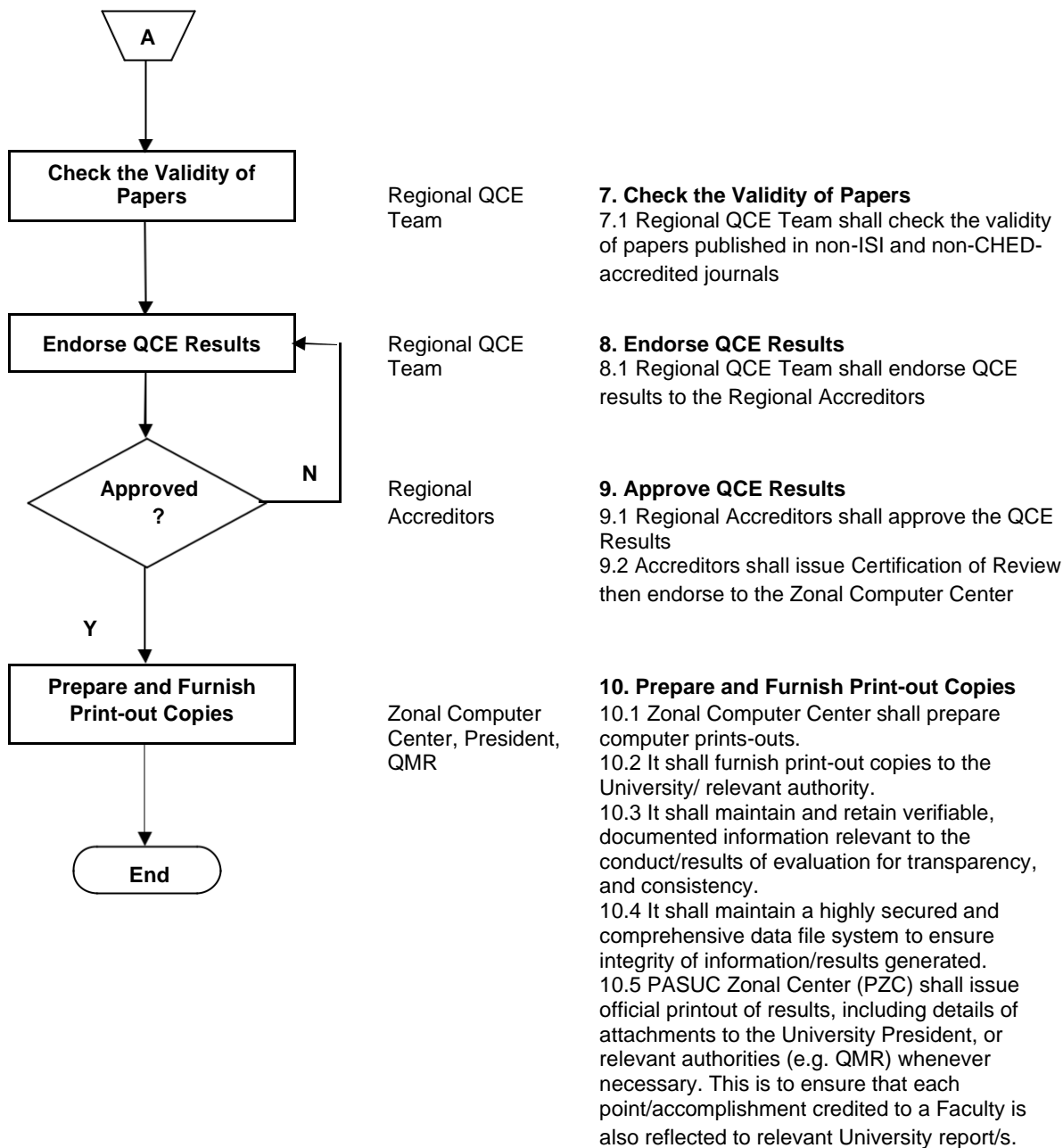
**Qualitative Contribution Evaluation Procedure Details:**



Prepared by:  
**(Sgd.) RALPH SHERWIN A. CORPUZ, Ph.D.**  
 Quality Management Representative (QMR)/  
 Director of Quality Assurance

Conformed by:  
**(Sgd.) MELITO A. BACCAY**  
 Director, PASUC Zonal Center

	<b>TECHNOLOGICAL UNIVERSITY OF THE PHILIPPINES</b> Ayala Blvd., Ermita, Manila, 1000 Philippines Tel No. +632-301-3001 local 709   Fax No. +632-521-4063 Email: quality@tup.edu.ph   Website: tup.edu.ph	Index No.	PM-PZC-10.1.1
		Issue No.	01
		Revision No.	01
	<b>PROCEDURES &amp; WORK INSTRUCTIONS MANUAL</b>	Date	06192020
Section 10	<b>PASUC ZONAL CENTER PROCEDURE</b>	Page No.	3 / 3
Subject 10.1.1	<b>Qualitative Contribution Evaluation</b>	QAC No.	CC-06222020



Prepared by:  
**(Sgd.) RALPH SHERWIN A. CORPUZ, Ph.D.**  
 Quality Management Representative  
 (QMR)/ Director of Quality Assurance

Conformed by:  
**(Sgd.) MELITO A. BACCAY**  
 Director, PASUC Zonal Center