



**National Power Corporation**  
**MINDANAO GENERATION**  
 Maria Cristina, Iligan City  
 OPERATIONS PLANNING DEPARTMENT

**DAMS, RESERVOIRS and WATERWAYS MANAGEMENT DIVISION**

**2010 LAKE LANAO DAILY AVERAGE OUTFLOW (in CMS)**

(Calendar Month)

DAY	JAN	FEB	MAR	APR	MAY	JUN	JUL	AUG	SEP	OCT	NOV	DEC
1	138.16	83.68	38.28	37.83	52.67	61.60	76.26	85.53	100.24	133.21	131.19	135.81
2	142.54	81.77	40.36	37.75	53.02	65.45	76.68	89.98	102.31	138.38	128.76	135.18
3	130.59	85.94	38.31	41.63	48.68	61.18	70.71	97.17	108.35	144.70	133.22	132.48
4	129.82	84.50	42.32	35.66	49.98	47.05	86.54	101.74	109.53	145.44	135.17	134.07
5	132.60	85.73	48.87	39.54	45.36	59.50	66.37	99.23	106.43	133.92	133.50	133.89
6	131.60	88.07	45.76	39.15	47.58	62.54	65.96	105.20	103.49	132.83	133.08	135.20
7	127.17	80.74	45.49	31.93	68.63	66.42	79.43	102.02	109.90	134.55	126.40	132.30
8	127.29	76.92	32.01	32.67	51.78	69.35	72.63	100.14	104.61	133.15	130.72	131.94
9	126.33	81.85	45.07	31.82	40.44	71.53	72.79	104.52	114.82	131.25	130.11	128.88
10	124.77	78.11	41.56	33.15	54.55	64.43	81.84	101.31	113.20	124.27	134.36	120.58
11	114.63	77.27	41.63	36.18	43.43	69.32	67.93	104.10	112.69	123.07	132.69	127.96
12	126.50	72.49	40.39	34.81	61.64	66.27	74.08	98.53	98.93	127.50	134.71	134.76
13	116.35	74.11	43.38	33.11	66.22	64.95	72.32	107.34	94.75	135.71	133.86	133.87
14	115.14	73.95	44.60	35.69	55.50	68.05	70.49	114.36	102.98	130.46	133.21	137.46
15	112.86	62.39	47.50	40.55	61.13	67.95	79.23	117.02	111.69	133.68	132.27	136.87
16	112.05	66.35	44.41	34.36	75.82	67.93	75.22	110.88	119.68	132.11	133.14	141.09
17	109.53	54.18	41.44	39.60	63.60	70.07	81.07	103.98	116.41	137.43	133.01	146.98
18	108.97	59.61	39.46	38.35	57.66	72.60	90.12	99.68	105.90	136.84	123.11	130.77
19	105.84	56.79	38.23	34.06	49.47	74.96	72.50	99.21	102.09	128.16	132.12	127.12
20	114.47	57.44	38.25	29.89	52.37	57.27	75.10	98.39	102.83	134.57	133.55	130.57
21	116.10	57.88	39.13	38.98	58.46	67.14	76.68	94.57	110.53	134.43	117.59	122.47
22	117.43	53.68	38.29	38.84	68.56	66.67	84.02	103.18	113.11	134.02	129.97	130.61
23	96.10	47.68	39.57	38.45	56.76	73.58	90.04	105.27	114.44	127.88	134.25	133.11
24	95.61	48.04	37.87	43.04	52.82	79.19	84.67	101.36	115.21	130.21	135.31	108.07
25	97.78	51.43	40.31	40.38	59.49	76.86	85.29	109.16	119.33	126.72	141.83	108.48
26	95.17	37.86	38.11	36.90	57.32	83.51	86.01	112.14	111.52	130.02	127.21	137.98
27	89.96	40.90	35.63	36.85	61.93	78.80	91.04	103.95	129.18	133.97	127.13	122.39
28	92.69	40.82	40.40	36.11	55.53	81.37	89.48	101.90	140.71	138.98	130.20	130.11
29	96.45	-	34.48	37.40	58.10	79.64	90.81	97.39	137.44	136.65	131.55	127.75
30	102.58	-	40.56	47.51	59.42	72.82	76.58	96.36	141.84	132.95	134.54	142.67
31	85.02	-	39.49	-	59.06	-	87.84	99.83	-	133.52	-	138.17
Min	85.02	37.86	32.01	29.89	40.44	47.05	65.96	85.53	94.75	123.07	117.59	108.07
Mean	113.94	66.44	40.68	37.07	56.35	68.93	79.02	102.11	112.47	133.24	131.59	131.28
Max	142.54	88.07	48.87	47.51	75.82	83.51	91.04	117.02	141.84	145.44	141.83	146.98



**National Power Corporation**  
**MINDANAO GENERATION**  
 Maria Cristina, Iligan City  
 OPERATIONS PLANNING DEPARTMENT

**DAMS, RESERVOIRS and WATERWAYS MANAGEMENT DIVISION**

**2011 LAKE LANAO DAILY AVERAGE OUTFLOW (in CMS)**

(Calendar Month)

DAY	JAN	FEB	MAR	APR	MAY	JUN	JUL	AUG	SEP	OCT	NOV	DEC
1	110.48	102.26	108.78	113.85	119.79	145.90	161.69	145.98	129.22	137.31	91.66	111.12
2	102.16	101.38	104.69	132.17	119.79	144.38	147.25	152.40	134.38	130.51	101.03	110.66
3	99.75	103.39	93.64	129.58	119.79	144.81	156.39	151.11	140.01	125.57	109.55	102.80
4	104.42	101.49	97.51	131.35	119.79	139.13	154.91	145.74	127.15	123.62	109.39	102.37
5	110.45	102.75	103.17	110.93	119.79	133.39	162.83	125.11	129.25	122.59	99.18	103.89
6	120.52	98.02	109.30	119.39	122.46	133.59	163.82	139.94	131.77	122.98	103.42	105.21
7	120.80	101.46	111.00	115.43	109.28	138.17	164.76	124.52	131.35	122.54	97.16	103.38
8	123.39	104.76	99.73	113.18	112.83	150.06	155.16	120.42	130.09	113.64	113.15	96.56
9	122.52	102.22	106.04	100.99	112.02	143.18	155.76	121.92	125.04	117.48	112.84	97.70
10	122.83	100.88	112.72	101.38	101.86	157.93	154.77	130.76	120.79	116.39	118.87	99.89
11	107.56	103.75	124.23	109.70	120.55	151.17	152.80	130.35	119.15	112.20	123.26	101.58
12	118.33	102.96	115.12	123.75	120.30	164.23	160.32	134.46	127.92	112.76	125.43	104.41
13	118.52	105.42	111.86	130.97	128.45	169.56	155.40	136.54	125.88	116.03	110.80	102.50
14	117.82	99.03	115.74	130.55	123.86	170.43	148.83	120.06	118.71	103.44	109.05	102.92
15	118.12	108.39	112.03	130.62	117.89	167.70	150.16	118.71	122.39	103.12	111.03	105.46
16	98.17	111.56	105.22	114.87	131.16	172.15	149.09	126.92	134.04	98.88	120.59	100.81
17	110.95	109.16	114.03	106.47	126.85	158.15	148.38	122.50	125.42	91.12	120.38	78.20
18	113.10	106.98	101.43	121.19	120.20	154.63	152.50	130.64	114.82	99.72	120.68	90.53
19	113.98	106.61	102.37	133.49	107.73	158.28	158.76	135.64	125.75	103.65	124.42	107.41
20	114.60	104.91	106.58	127.78	111.65	162.79	163.58	132.57	115.85	106.30	122.34	112.95
21	121.72	108.92	103.61	122.72	115.89	161.81	160.82	133.63	112.23	106.32	121.90	112.28
22	112.22	108.23	106.20	118.07	108.78	158.22	152.24	142.54	119.94	106.06	119.20	113.65
23	111.94	107.79	107.14	116.19	109.17	160.13	147.73	144.77	116.49	100.74	119.93	114.47
24	113.99	108.81	101.37	116.44	115.95	166.50	142.76	145.23	114.18	113.60	119.05	102.41
25	113.16	108.67	113.65	127.83	113.46	165.31	144.35	145.08	128.29	111.24	125.05	102.28
26	112.90	107.45	111.58	120.74	117.49	161.99	147.66	138.19	135.09	106.95	120.74	137.98
27	112.19	101.00	121.54	124.79	122.69	168.39	149.71	137.05	135.40	113.72	106.73	122.39
28	98.13	105.65	116.75	132.73	129.14	164.52	144.75	139.36	135.69	113.46	108.08	130.11
29	96.89	-	119.51	134.03	131.97	158.44	144.66	146.07	139.44	112.21	115.13	127.75
30	101.36	-	117.26	122.30	136.67	165.81	150.75	143.26	132.48	101.47	118.87	142.67
31	100.68	-	122.93	-	147.82	-	141.12	142.31	-	93.47	-	138.17
Min	96.89	98.02	93.64	100.99	101.86	133.39	141.12	118.71	112.23	91.12	91.66	78.20
Mean	111.73	104.78	109.57	121.12	119.84	156.36	153.02	135.61	126.61	111.58	113.96	109.18
Max	123.39	111.56	124.23	134.03	147.82	172.15	164.76	152.40	140.01	137.31	125.43	142.67



**OPERATIONS PLANNING DEPARTMENT**

**DAMS, RESERVOIRS and WATERWAYS MANAGEMENT DIVISION**

**2012 LAKE LANAO DAILY AVERAGE OUTFLOW (in CMS)**

(Calendar Month)

DAY	JAN	FEB	MAR	APR	MAY	JUN	JUL	AUG	SEP	OCT	NOV	DEC
1	96.61	114.24	112.80	95.84	129.16	131.39	136.81	123.05	116.35	124.21	125.92	110.78
2	98.90	101.42	114.16	110.47	135.26	139.81	124.88	130.05	108.01	120.29	124.56	107.61
3	107.01	100.66	114.13	115.90	142.84	135.04	133.42	131.76	112.59	120.17	124.29	112.72
4	111.01	95.56	103.32	115.38	140.91	130.57	139.09	136.41	124.87	122.70	106.30	53.35
5	109.48	113.82	112.63	112.16	140.66	121.36	120.64	133.47	125.56	125.24	114.16	80.71
6	110.82	106.12	106.22	98.94	142.40	120.98	98.88	136.83	129.44	120.64	123.73	109.83
7	112.56	112.01	114.25	94.87	151.37	136.20	117.91	139.57	129.25	119.81	114.90	101.14
8	112.19	115.71	113.36	105.94	140.75	133.68	115.78	152.12	122.50	125.65	113.14	110.04
9	112.16	101.85	114.08	108.13	115.55	131.07	107.76	152.12	117.25	125.11	122.48	116.79
10	112.10	110.71	107.43	117.68	108.61	126.86	112.01	152.07	115.33	122.39	121.27	106.64
11	111.49	113.63	112.16	116.60	113.43	146.48	119.29	145.05	116.78	123.19	99.78	124.69
12	108.24	107.74	121.24	115.30	114.26	126.76	116.47	123.52	114.16	126.57	109.89	129.81
13	102.96	107.65	123.61	118.92	116.12	129.17	122.64	133.88	123.82	124.98	115.77	94.45
14	94.56	113.97	122.55	111.56	114.24	133.44	117.99	141.27	117.55	124.76	110.93	94.29
15	93.43	106.11	112.89	111.17	117.54	132.08	112.19	136.22	118.66	121.85	109.18	107.63
16	97.81	112.52	115.31	116.52	119.47	138.61	125.95	139.31	117.84	129.11	110.56	111.37
17	100.32	111.29	113.05	129.64	127.52	138.56	128.36	135.58	123.26	123.49	109.02	111.91
18	113.46	101.94	118.45	138.23	124.82	131.20	121.57	136.15	121.89	132.21	72.78	117.79
19	124.12	94.25	120.37	137.09	118.33	140.84	123.33	131.71	118.86	133.69	105.26	115.21
20	124.80	111.87	114.84	133.71	118.80	145.72	125.28	117.38	109.99	130.14	125.06	110.95
21	127.65	106.46	120.69	111.67	118.85	148.92	130.50	118.13	115.27	117.08	100.13	104.97
22	124.12	117.45	126.25	114.62	125.85	137.55	129.66	132.86	111.47	117.73	103.08	90.35
23	114.16	126.71	126.50	138.36	119.71	135.38	130.98	128.38	106.37	102.94	107.04	86.91
24	116.95	127.07	113.59	139.51	126.60	134.86	116.92	126.63	119.68	106.15	113.18	95.76
25	121.35	125.72	104.29	146.72	134.82	142.80	111.73	121.50	117.49	101.68	110.16	97.99
26	128.66	128.29	121.36	149.96	128.90	148.74	105.75	114.62	121.91	96.32	113.65	107.32
27	127.47	129.47	110.83	144.89	120.25	143.14	110.53	117.56	120.42	112.58	117.72	93.92
28	105.75	126.18	110.76	141.14	115.95	139.07	121.92	127.85	120.59	107.17	113.92	104.44
29	102.08	119.16	116.14	133.06	132.45	130.88	120.53	125.90	117.77	132.76	115.99	106.81
30	110.67	-	102.54	122.91	132.99	133.66	110.06	123.54	121.36	136.96	107.64	103.62
31	125.01	-	112.38	-	131.21	-	122.93	120.07	-	135.31	-	106.92
Min	93.43	94.25	102.54	94.87	108.61	120.98	98.88	123.05	106.37	96.32	72.78	53.35
Mean	111.55	112.40	114.59	121.56	126.44	135.49	120.38	131.76	118.54	121.38	112.05	104.09
Max	128.66	129.47	126.50	149.96	151.37	148.92	139.09	152.12	129.44	136.96	125.92	129.81



National Power Corporation  
**MINDANAO GENERATION**  
Maria Cristina, Iligan City

**OPERATIONS PLANNING DEPARTMENT**

**DAMS, RESERVOIRS and WATERWAYS MANAGEMENT DIVISION**

**2013 LAKE LANAO DAILY AVERAGE OUTFLOW (in CMS)**

(Calendar Month)

DAY	JAN	FEB	MAR	APR	MAY	JUN	JUL	AUG	SEP	OCT	NOV	DEC
1	106.48	102.07	71.45	84.80	115.20	128.45	142.97	159.10	155.60	160.79	109.65	137.27
2	99.36	101.73	70.11	100.68	117.79	118.82	144.44	163.17	154.31	146.34	102.59	132.41
3	99.72	104.41	69.51	105.30	126.80	127.74	144.80	159.82	156.56	132.63	123.49	139.84
4	100.83	106.55	70.65	101.66	136.84	141.84	144.45	146.77	153.42	140.97	119.68	143.89
5	97.06	114.21	70.93	97.98	130.69	144.82	145.74	152.59	149.18	131.16	124.91	143.95
6	102.81	100.72	71.59	91.37	156.86	131.76	152.28	159.48	142.86	124.55	126.55	104.63
7	102.48	90.71	71.20	97.06	135.70	139.96	143.68	154.05	144.07	122.52	129.78	138.84
8	102.96	103.48	66.61	89.33	129.19	140.38	156.92	161.12	139.10	140.26	131.86	141.88
9	114.94	69.06	68.23	87.54	116.23	135.35	156.81	158.77	130.41	141.19	129.75	145.62
10	118.43	69.89	68.86	99.50	114.48	144.87	156.82	159.10	134.79	138.84	124.97	147.99
11	120.57	71.10	67.97	119.08	104.09	141.31	152.26	155.05	135.25	126.08	119.81	138.52
12	95.80	71.91	70.98	123.75	105.60	141.32	148.68	155.35	133.26	88.72	113.32	137.38
13	84.87	71.23	71.73	117.13	98.59	140.82	149.84	155.14	136.10	149.05	118.50	140.26
14	96.75	69.64	76.98	112.53	100.21	141.43	150.17	154.64	133.03	114.24	114.58	136.26
15	87.89	70.92	77.25	115.68	112.68	142.70	149.54	156.72	141.19	114.18	107.12	131.14
16	92.35	69.62	82.93	126.92	115.53	142.36	140.61	160.23	153.17	129.45	112.73	136.64
17	114.08	68.82	78.92	116.00	101.42	143.32	152.59	156.30	161.44	142.21	115.54	132.25
18	114.18	66.22	76.01	119.44	104.21	140.86	154.74	157.24	154.03	143.56	129.53	143.95
19	111.58	71.48	82.49	120.89	103.06	141.91	156.10	166.54	159.50	141.67	122.75	142.85
20	99.62	71.77	106.02	111.15	103.88	142.39	156.64	159.23	140.29	132.28	141.90	141.67
21	98.84	72.84	91.44	95.79	106.69	141.72	146.26	134.06	135.83	141.86	121.14	135.26
22	98.18	74.11	84.70	108.36	112.78	144.59	149.81	144.81	139.91	142.88	134.13	127.81
23	90.34	74.22	80.90	124.54	123.69	142.13	154.63	157.20	121.08	139.86	108.88	127.08
24	103.31	74.84	86.22	119.77	118.36	141.47	153.23	154.45	120.10	138.37	113.30	129.36
25	105.25	69.41	109.14	115.09	124.48	138.32	156.42	147.57	155.35	126.56	120.50	122.57
26	100.55	71.64	86.73	122.10	123.19	145.09	155.70	142.20	153.88	118.18	130.77	126.40
27	93.53	70.41	99.27	119.72	138.71	145.21	150.51	155.25	153.75	114.53	132.82	129.27
28	105.70	70.24	88.58	112.27	145.13	145.32	152.70	159.19	149.62	111.47	138.52	132.43
29	109.73	-	83.01	127.06	107.15	139.26	155.20	157.65	150.53	113.97	138.25	128.32
30	97.30	-	107.10	124.85	132.41	134.98	156.15	154.08	150.01	126.93	124.13	127.53
31	107.85	-	102.73	-	135.81	-	159.81	155.20	-	123.03	-	128.42
Min	84.87	66.22	66.61	84.80	98.59	118.82	140.61	146.77	120.10	88.72	102.59	104.63
Mean	102.37	80.12	80.98	110.24	119.27	139.68	151.31	155.23	144.59	130.91	122.72	134.57
Max	120.57	114.21	109.14	127.06	156.86	145.32	159.81	166.54	161.44	160.79	141.90	147.99



**OPERATIONS PLANNING DEPARTMENT**

**DAMS, RESERVOIRS and WATERWAYS MANAGEMENT DIVISION**

**2014 LAKE LANAO DAILY AVERAGE OUTFLOW (in CMS)**

(Calendar Month)

DAY	JAN	FEB	MAR	APR	MAY	JUN	JUL	AUG	SEP	OCT	NOV	DEC
1	126.60	115.05	131.42	144.95	132.12	117.14	128.52	153.66	122.32	111.25	122.51	133.92
2	128.13	114.70	121.57	153.43	123.06	117.10	128.63	142.10	131.78	120.30	122.51	131.48
3	108.48	111.74	144.29	157.81	123.51	118.15	133.77	149.53	126.42	120.32	133.62	155.70
4	108.42	110.77	144.74	171.16	124.28	118.59	135.43	147.89	137.46	120.01	137.95	146.35
5	109.51	119.40	153.94	161.51	118.43	119.87	136.27	158.22	131.96	117.52	124.54	161.72
6	119.54	139.97	153.83	160.45	118.09	121.98	136.41	150.80	128.38	113.19	119.20	150.51
7	134.89	141.90	155.62	173.38	117.88	124.00	136.17	146.77	130.48	115.29	116.96	140.57
8	128.51	123.10	156.15	161.43	120.60	122.67	137.70	151.62	100.84	106.42	116.77	141.50
9	119.88	117.02	154.09	159.25	121.60	123.24	139.13	150.36	106.13	109.42	112.26	141.36
10	119.03	121.72	153.62	160.43	110.88	113.27	137.21	146.82	100.72	113.12	120.31	129.16
11	117.09	127.26	154.88	161.73	121.23	121.67	125.07	151.00	111.32	114.25	116.83	127.28
12	120.86	120.36	154.32	163.09	121.83	110.71	122.71	149.01	113.06	85.01	113.57	126.22
13	122.50	114.22	156.01	159.21	122.14	117.44	124.11	141.46	113.22	123.07	129.46	124.47
14	107.29	123.78	154.16	156.13	130.26	117.40	124.97	143.17	113.25	130.53	136.69	125.05
15	115.56	126.21	148.13	160.28	124.20	116.26	129.10	141.53	125.83	154.52	128.61	125.97
16	121.11	127.09	147.43	158.09	103.00	122.78	127.45	132.44	146.65	131.24	122.54	123.95
17	114.80	120.88	148.30	150.82	102.77	128.73	127.54	127.58	108.49	125.41	127.82	120.63
18	109.77	117.41	148.60	145.22	103.41	123.14	127.11	141.50	118.55	128.63	123.89	118.21
19	109.39	128.97	147.03	150.76	102.53	128.06	121.05	133.44	128.19	115.79	123.74	120.99
20	111.09	134.84	144.85	153.07	104.22	125.91	113.86	137.60	116.47	119.46	124.41	123.87
21	113.57	131.84	146.04	154.88	103.41	117.72	115.77	121.57	117.58	124.52	125.65	124.91
22	111.51	128.18	148.50	155.47	103.99	116.61	126.93	129.95	122.33	124.15	145.16	123.41
23	114.64	129.05	137.43	151.70	104.46	128.81	139.77	135.24	120.00	124.23	139.43	125.11
24	115.11	129.55	143.92	149.06	104.60	126.96	144.89	132.34	105.08	129.64	137.76	122.41
25	114.41	141.24	149.38	149.20	104.98	129.34	130.63	131.78	117.06	127.62	136.32	120.16
26	112.40	149.15	149.52	148.89	105.15	130.01	122.20	132.28	118.14	116.20	138.60	121.37
27	113.21	127.40	149.68	148.44	95.53	135.16	125.94	126.17	113.05	120.92	143.13	120.49
28	112.19	138.43	147.86	150.48	115.13	130.21	139.52	128.21	106.86	117.49	137.54	117.70
29	114.10	-	145.02	135.25	103.83	103.52	144.09	123.87	93.38	128.44	136.29	111.24
30	113.44	-	144.55	127.33	116.15	130.19	150.10	126.32	107.58	125.08	136.62	117.46
31	113.88	-	145.34	-	116.04	-	154.18	122.07	-	129.02	-	120.91
Min	107.29	110.77	121.57	127.33	95.53	103.52	113.86	142.10	93.38	85.01	112.26	111.24
Mean	116.16	126.12	147.75	154.43	113.53	121.89	131.81	138.91	117.75	120.71	128.36	128.84
Max	134.89	149.15	156.15	173.38	132.12	135.16	154.18	158.22	146.65	154.52	145.16	161.72



National Power Corporation  
MINDANAO GENERATION  
Maria Cristina, Iligan City

**OPERATIONS PLANNING DEPARTMENT**

**DAMS, RESERVOIRS and WATERWAYS MANAGEMENT DIVISION**

**2015 LAKE LANAO DAILY AVERAGE OUTFLOW (in CMS)**

(Calendar Month)

DAY	JAN	FEB	MAR	APR	MAY	JUN	JUL	AUG	SEP	OCT	NOV	DEC
1	119.08	118.35	143.38	124.67	122.08	146.02	113.25	82.83	99.09	85.43	63.56	82.43
2	121.24	158.20	142.10	118.85	119.85	121.46	103.01	68.17	92.58	98.78	70.17	82.17
3	120.80	149.68	142.45	112.59	124.28	122.64	109.36	81.42	127.25	86.67	56.85	79.24
4	124.87	116.14	134.54	109.01	122.01	122.11	111.22	78.71	87.67	87.92	57.38	75.64
5	125.44	125.63	134.53	89.93	120.94	113.67	105.40	80.20	84.80	88.73	57.65	75.54
6	129.35	115.34	133.42	115.11	123.36	104.67	171.25	82.11	86.19	88.97	57.79	77.07
7	127.17	123.69	132.90	107.88	129.69	109.95	109.14	67.21	88.03	85.57	58.19	77.33
8	121.08	119.69	132.70	130.64	127.61	118.29	116.36	81.65	85.80	80.93	58.41	78.07
9	117.16	124.40	121.71	118.89	126.55	117.55	114.43	67.72	81.84	79.90	60.79	78.84
10	119.63	126.82	134.88	115.12	125.19	109.24	113.66	71.50	82.44	86.17	77.28	76.75
11	120.18	129.72	134.81	113.56	142.46	115.62	111.39	79.06	80.95	98.45	80.42	75.00
12	118.81	128.97	132.50	107.40	128.35	113.53	105.52	62.16	92.77	94.25	82.65	77.82
13	121.65	134.30	131.35	111.08	126.72	111.71	114.90	83.07	102.18	85.10	83.34	81.43
14	127.67	125.75	132.46	110.57	119.62	112.87	90.58	79.32	95.58	87.97	81.13	81.02
15	126.56	124.92	130.54	114.64	115.75	110.06	109.02	71.01	81.64	89.92	82.60	66.84
16	126.43	125.12	131.67	114.44	115.05	105.28	104.92	78.22	80.85	89.62	89.45	66.23
17	125.80	125.73	116.77	113.14	114.24	114.22	106.66	80.57	84.69	88.76	84.46	66.44
18	125.92	125.21	120.96	123.70	115.69	113.78	110.33	81.47	89.06	89.66	85.13	69.88
19	130.16	125.72	121.95	134.24	116.32	123.09	99.93	73.72	91.88	88.29	84.17	70.80
20	124.62	125.68	118.90	116.61	111.96	109.47	85.49	85.21	87.07	90.29	86.65	80.41
21	129.72	130.38	118.59	118.24	115.68	118.23	90.31	86.27	85.36	89.42	89.58	81.23
22	129.63	129.49	116.42	120.05	114.75	117.67	83.59	92.85	81.54	88.62	88.75	77.32
23	118.93	131.69	118.20	124.52	119.59	119.29	95.48	94.69	86.94	88.40	57.21	83.65
24	126.63	132.51	117.92	122.71	106.72	106.40	77.32	88.21	87.28	90.49	87.35	74.06
25	125.11	139.33	117.98	123.43	110.29	93.58	87.25	95.38	87.77	87.63	87.69	54.65
26	121.76	140.84	118.94	123.74	105.81	121.97	87.38	98.77	86.89	86.89	87.40	64.96
27	88.53	142.25	117.69	120.37	115.83	112.95	68.16	90.80	89.81	76.93	91.38	64.69
28	129.04	102.96	116.86	128.74	120.88	108.86	67.51	99.82	87.85	86.87	88.30	64.45
29	130.64	-	117.00	127.52	114.35	117.60	69.82	97.78	83.97	82.68	87.40	64.23
30	129.93	-	104.11	122.63	110.28	114.50	82.30	125.14	85.53	70.05	87.65	63.88
31	147.64	-	119.50	-	85.32	-	83.39	92.83	-	70.07	-	63.68
Min	88.53	102.96	104.11	89.93	85.32	93.58	67.51	67.21	80.85	70.05	56.85	54.65
Mean	124.23	128.52	126.06	117.80	118.30	114.88	99.95	83.80	88.84	86.76	77.03	73.41
Max	147.64	158.20	143.38	134.24	142.46	146.02	171.25	125.14	127.25	98.78	91.38	83.65



National Power Corporation  
**MINDANAO GENERATION**  
 Maria Cristina, Iligan City

**OPERATIONS PLANNING DEPARTMENT**

**DAMS, RESERVOIRS and WATERWAYS MANAGEMENT DIVISION**

**2016 LAKE LANAO DAILY AVERAGE OUTFLOW (in CMS)**

(Calendar Month)

DAY	JAN	FEB	MAR	APR	MAY	JUN	JUL	AUG	SEP	OCT	NOV	DEC
1	63.46	43.52	40.91	37.41	33.14	73.60	93.16	66.46	59.16	66.16	60.50	70.08
2	63.14	43.45	40.08	36.57	39.44	74.58	93.85	64.49	59.39	58.21	60.26	67.37
3	62.90	43.43	34.90	36.38	39.26	76.41	89.84	116.04	57.54	47.75	61.69	70.91
4	62.66	43.28	34.88	37.62	41.13	71.82	93.67	88.11	59.28	83.42	60.12	65.57
5	62.41	43.20	39.81	39.12	81.47	71.88	97.02	82.66	58.27	89.26	69.56	61.71
6	62.16	43.07	39.67	29.07	85.87	69.75	97.70	66.91	56.91	71.23	58.40	65.78
7	61.83	42.94	34.54	39.18	86.33	72.91	99.84	69.98	59.08	62.76	60.79	68.94
8	61.61	42.77	34.39	41.19	85.93	74.00	98.06	75.17	58.30	55.68	62.47	71.53
9	61.40	42.63	34.26	39.41	87.13	73.32	108.55	76.60	56.63	65.95	65.03	71.54
10	61.16	42.47	34.11	33.05	65.69	68.92	101.56	77.94	63.75	66.71	61.60	69.68
11	61.01	42.34	33.99	39.29	60.50	72.04	96.62	76.56	66.21	67.78	61.04	70.18
12	60.75	42.18	33.84	49.63	60.70	72.86	81.91	65.35	66.90	64.28	60.39	74.08
13	57.90	42.05	33.67	44.55	61.72	68.42	56.31	57.60	67.71	66.76	59.38	70.47
14	57.65	41.99	39.33	45.28	62.06	75.28	76.83	74.61	67.15	68.27	61.73	68.96
15	60.23	42.09	39.34	43.03	62.04	80.48	87.45	82.49	68.69	65.50	69.84	69.79
16	59.93	41.97	57.48	36.59	60.35	74.56	88.58	81.53	69.75	67.47	78.24	64.22
17	59.73	41.82	63.25	34.11	62.08	66.28	86.05	84.29	63.73	66.21	60.59	82.14
18	56.78	41.66	47.00	32.42	61.96	80.86	86.28	76.74	62.29	66.70	64.55	88.58
19	54.48	41.53	42.15	33.67	62.44	76.89	80.78	70.71	70.36	66.87	59.50	108.45
20	52.23	41.31	42.73	32.88	71.56	76.51	57.01	76.66	68.84	67.53	57.82	119.23
21	58.61	41.20	42.37	33.34	59.12	76.61	63.08	75.46	61.66	67.48	68.47	119.84
22	51.68	41.03	42.56	32.99	59.67	90.96	62.91	77.23	56.97	68.66	68.48	119.53
23	51.53	40.91	42.18	33.21	67.61	92.08	75.76	76.89	62.70	68.05	78.21	127.51
24	51.38	40.80	53.96	32.63	72.08	69.81	84.53	77.86	61.06	67.82	73.71	121.63
25	51.14	40.63	48.60	33.84	72.69	73.48	85.22	66.93	58.97	63.69	63.96	125.18
26	50.92	40.52	38.38	33.32	69.98	78.46	92.88	59.67	60.53	66.16	63.94	64.96
27	50.72	40.59	39.23	33.49	71.56	90.36	78.61	58.36	60.62	58.18	63.53	64.69
28	50.28	40.46	42.43	33.15	71.05	93.38	56.32	60.15	59.42	57.95	67.15	64.45
29	50.00	40.40	46.16	33.72	75.08	96.35	74.16	59.59	61.46	64.57	70.47	64.23
30	43.89	-	42.43	32.95	72.96	93.65	76.02	58.36	68.99	60.82	72.28	63.88
31	43.66	-	36.05	-	72.82	-	73.48	60.46	-	61.76	-	63.68
Min	43.66	40.40	33.67	29.07	33.14	66.28	56.31	64.49	56.63	47.75	57.82	61.71
Mean	56.68	41.94	41.12	36.44	65.66	77.55	83.68	72.96	62.41	65.79	64.79	80.61
Max	63.46	43.52	63.25	49.63	87.13	96.35	108.55	116.04	70.36	89.26	78.24	127.51



National Power Corporation  
**MINDANAO GENERATION**  
 Maria Cristina, Iligan City

**OPERATIONS PLANNING DEPARTMENT**

**DAMS, RESERVOIRS and WATERWAYS MANAGEMENT DIVISION**

**2017 LAKE LANAO DAILY AVERAGE OUTFLOW (in CMS)**

(Calendar Month)

DAY	JAN	FEB	MAR	APR	MAY	JUN	JUL	AUG	SEP	OCT	NOV	DEC
1	127.86	134.53	94.67	114.90	107.45	161.92	175.38	148.14	165.90	133.58	104.26	114.25
2	129.10	148.36	94.34	116.29	134.08	163.69	170.64	156.19	168.09	133.54	113.29	114.35
3	131.69	149.70	92.74	115.31	129.61	161.88	178.95	163.66	163.23	143.79	112.95	120.83
4	132.74	150.42	88.85	115.24	123.69	161.20	191.15	173.76	164.69	143.22	112.39	125.17
5	137.51	149.64	93.85	116.28	125.51	164.17	190.38	173.17	171.66	130.22	113.03	120.95
6	139.01	152.54	94.92	116.70	124.49	161.35	190.35	173.91	155.11	136.59	113.52	129.18
7	137.33	160.91	99.30	116.63	128.54	145.98	189.28	179.20	158.13	137.37	117.37	134.78
8	136.31	169.20	99.07	114.95	128.31	160.95	182.70	179.71	169.22	135.85	108.73	134.86
9	136.49	169.00	103.28	116.18	130.02	165.16	184.74	180.17	165.04	121.99	115.54	132.86
10	136.50	158.94	99.92	97.31	146.04	161.74	161.16	181.33	154.89	136.38	120.88	123.25
11	139.11	148.03	94.69	99.00	145.66	170.81	159.47	185.51	153.13	133.09	95.34	122.33
12	136.63	145.49	93.96	94.47	145.21	169.56	160.46	185.56	164.44	132.35	92.72	122.63
13	136.20	131.38	97.73	94.38	144.36	169.01	160.53	185.35	169.63	133.13	98.85	121.80
14	135.61	132.12	107.73	98.62	146.43	173.37	160.30	174.80	168.96	134.96	102.35	122.12
15	135.10	101.10	108.60	119.10	151.10	165.66	159.85	161.78	166.99	133.21	103.33	126.44
16	143.39	99.66	106.80	118.87	146.69	162.23	159.87	154.16	170.93	131.27	103.97	129.88
17	135.91	99.74	108.27	118.81	153.92	170.98	161.10	154.36	143.34	131.54	103.90	128.79
18	138.10	96.45	111.50	112.34	158.17	151.01	155.59	151.19	148.09	129.04	93.35	129.37
19	137.11	95.27	116.16	110.72	167.34	150.99	155.15	149.07	162.95	128.90	90.69	129.52
20	131.67	92.33	117.26	121.15	173.73	162.09	154.91	149.61	162.54	100.52	92.41	128.71
21	140.99	98.46	117.39	116.68	177.54	160.50	168.14	148.38	156.47	108.25	104.62	122.61
22	147.67	101.38	117.36	110.18	155.61	166.86	181.96	149.28	156.60	109.08	110.70	98.25
23	139.47	95.80	117.22	111.44	165.47	172.09	181.66	149.27	161.54	102.09	114.42	97.18
24	146.00	94.72	116.45	113.60	174.17	160.87	184.15	175.66	156.80	93.68	114.09	111.79
25	140.85	95.64	116.25	108.95	137.58	171.41	181.97	179.38	155.67	98.97	112.84	137.92
26	145.97	94.43	116.05	117.32	128.43	168.17	182.10	178.88	113.60	98.57	113.50	141.40
27	148.05	95.33	116.04	121.68	167.91	182.88	191.41	166.34	107.27	98.42	111.01	142.63
28	145.99	94.76	116.52	113.12	167.05	145.98	184.35	169.48	145.11	95.67	119.70	142.48
29	132.57	-	118.71	120.44	155.61	132.32	185.33	164.96	133.67	90.77	124.65	143.27
30	143.96	-	116.92	109.78	165.46	194.47	185.20	171.55	133.44	98.77	124.90	142.39
31	134.18	-	114.40	-	160.45	-	158.70	172.02	-	100.80	-	143.58
Min	127.86	92.33	88.85	94.38	107.45	132.32	154.91	148.14	107.27	90.77	90.69	97.18
Mean	138.03	123.40	106.68	112.35	147.28	163.64	173.77	167.29	155.57	120.50	108.64	126.95
Max	148.05	169.20	118.71	121.68	177.54	194.47	191.41	185.56	171.66	143.79	124.90	143.58
Annual Mean	<b>137.01</b>											





National Power Corporation  
MINDANAO GENERATION  
Maria Cristina, Iligan City

**OPERATIONS PLANNING DEPARTMENT**

**DAMS, RESERVOIRS and WATERWAYS MANAGEMENT DIVISION**

**2018 LAKE LANAO DAILY AVERAGE OUTFLOW (in CMS)**

(Calendar Month)

DAY	JAN	FEB	MAR	APR	MAY	JUN	JUL	AUG	SEP	OCT	NOV	DEC
1	137.47	122.34	124.11	72.28	82.81	87.90	67.77	95.07	85.68	94.54	76.59	93.26
2	136.33	121.13	127.30	85.56	80.72	87.89	79.47	86.17	69.45	90.20	76.49	81.64
3	148.33	118.83	115.70	103.90	83.42	82.35	76.06	82.38	81.50	83.16	71.76	77.08
4	150.71	92.75	117.41	103.58	80.04	82.11	79.32	83.55	75.85	79.61	56.21	77.07
5	144.26	106.02	119.20	92.17	77.08	94.10	75.61	79.18	74.42	80.13	72.03	88.76
6	159.65	106.28	124.29	92.78	79.99	71.02	79.67	79.14	85.86	82.29	93.80	87.64
7	147.19	97.87	117.89	77.73	85.07	78.80	72.50	99.41	80.84	74.09	90.68	79.89
8	152.41	100.30	93.20	73.99	99.40	81.48	70.23	103.35	78.64	82.08	96.11	73.58
9	152.42	88.06	111.02	92.96	102.58	80.56	90.14	104.09	78.65	89.54	93.70	63.62
10	155.61	108.65	113.79	60.35	94.60	79.42	87.14	103.62	81.23	89.54	94.07	85.45
11	158.42	84.13	105.00	81.73	100.67	83.14	79.94	104.77	78.20	102.05	76.88	88.43
12	157.97	111.20	106.98	79.39	92.27	77.33	79.80	104.45	78.15	100.31	81.69	83.60
13	156.21	109.87	103.21	74.50	87.77	77.12	76.93	110.32	71.42	79.92	84.21	84.10
14	151.06	109.69	100.73	88.26	90.26	82.46	79.64	108.65	81.56	75.95	90.31	70.70
15	143.84	122.92	115.83	74.10	92.97	82.10	79.66	118.92	77.55	71.79	91.31	79.02
16	143.45	123.07	121.02	71.37	108.30	81.19	77.46	107.46	85.58	86.22	88.38	60.77
17	142.58	140.23	119.77	78.26	105.33	74.82	83.41	100.19	82.42	75.52	71.88	76.44
18	148.14	93.86	93.27	86.72	95.70	79.90	90.79	89.66	88.26	70.47	84.74	75.64
19	146.20	106.52	109.23	77.07	84.48	95.70	88.49	90.28	91.90	72.60	87.30	63.77
20	146.02	122.62	109.23	78.63	94.82	87.70	103.10	90.12	90.99	72.58	87.63	67.77
21	145.38	144.02	117.21	81.05	100.04	86.36	98.35	99.41	73.86	70.07	97.41	67.01
22	148.83	149.16	105.60	65.43	100.97	74.46	91.98	98.57	75.35	66.64	115.89	66.67
23	152.50	151.26	100.85	93.32	101.05	74.77	72.23	110.39	61.74	66.51	95.84	66.25
24	150.09	137.19	106.71	105.67	100.83	79.96	93.97	86.50	73.37	70.65	76.00	67.11
25	123.92	107.92	99.95	104.86	99.77	88.96	90.95	73.60	76.60	63.94	74.73	60.35
26	138.16	115.63	111.71	101.97	87.87	89.59	97.65	69.61	72.43	72.20	91.48	66.70
27	123.95	114.87	94.65	101.14	94.39	89.02	104.71	83.11	77.13	77.94	95.51	75.17
28	126.99	114.01	88.56	87.96	87.90	91.55	97.46	87.79	80.30	73.07	85.00	81.70
29	133.09	-	71.55	88.13	91.35	87.78	82.60	94.52	88.37	75.06	96.66	74.00
30	138.47	-	74.09	77.71	101.67	81.37	91.81	81.75	81.72	76.42	87.27	71.33
31	142.57	-	79.11	-	91.74	-	86.19	73.17	-	75.31	-	69.70
Min	123.92	84.13	71.55	60.35	77.08	71.02	67.77	79.14	61.74	63.94	56.21	60.35
Mean	145.23	115.01	106.39	85.09	92.77	83.03	84.68	93.52	79.30	78.72	86.05	74.98
Max	159.65	151.26	127.30	105.67	108.30	95.70	104.71	118.92	91.90	102.05	115.89	93.26
Annual Mean	93.73											



National Power Corporation  
**MINDANAO GENERATION**  
 Maria Cristina, Iligan City

**OPERATIONS PLANNING DEPARTMENT**

**DAMS, RESERVOIRS and WATERWAYS MANAGEMENT DIVISION**

**2019 LAKE LANAo DAILY AVERAGE OUTFLOW (in CMS)**

(Calendar Month)

DAY	JAN	FEB	MAR	APR	MAY	JUN	JUL	AUG	SEP	OCT	NOV	DEC
1	60.24	56.79	56.95	25.05	22.49	21.57	52.82	67.70	53.94	71.05	60.82	61.14
2	62.95	56.02	40.87	23.09	21.88	21.45	52.29	67.61	72.02	68.28	61.58	66.35
3	75.45	44.46	49.37	22.73	23.06	23.06	46.47	75.01	81.66	71.92	62.25	74.66
4	74.75	46.00	48.91	23.24	23.00	19.32	49.26	64.26	85.50	66.49	65.80	82.20
5	73.83	55.18	58.17	23.15	22.34	24.16	50.39	75.60	83.46	67.25	65.38	70.27
6	60.11	54.35	60.56	23.81	22.50	21.80	48.47	82.28	78.03	58.94	62.01	79.85
7	70.32	53.91	66.92	22.57	22.84	22.28	48.97	83.69	80.55	71.72	68.45	65.59
8	76.47	56.69	69.64	23.18	24.08	23.20	46.72	90.37	73.32	76.01	68.92	64.83
9	75.38	54.73	69.01	23.66	24.08	24.03	50.86	81.02	87.05	69.81	66.53	74.44
10	80.80	46.47	58.32	25.12	22.07	23.10	49.36	92.42	73.63	70.45	59.58	66.07
11	66.83	43.61	64.20	23.83	21.46	29.19	49.86	83.95	64.79	69.03	71.98	72.78
12	60.98	45.11	65.48	23.46	22.55	30.62	48.76	90.61	72.98	50.70	91.74	63.75
13	59.31	48.82	69.11	23.47	22.47	30.31	45.32	94.22	68.93	57.15	70.81	73.14
14	71.04	52.05	68.10	23.08	22.17	31.15	45.95	94.08	76.04	64.76	65.23	63.84
15	72.45	49.73	48.63	21.87	21.47	31.24	45.44	84.83	69.94	58.51	71.91	65.53
16	64.66	48.12	30.54	23.44	23.58	30.89	51.04	61.56	63.42	53.23	58.24	59.28
17	64.37	53.49	28.39	23.22	21.82	32.60	57.38	70.96	58.98	64.11	63.71	51.24
18	67.10	52.12	27.01	23.46	23.19	23.88	55.75	87.36	66.37	56.62	72.41	59.15
19	65.46	41.66	26.60	23.06	23.16	38.05	65.61	74.16	71.99	60.63	62.81	61.14
20	55.23	49.74	26.65	24.04	25.95	41.59	75.36	74.37	72.16	60.76	61.47	61.20
21	61.05	47.69	28.40	23.61	11.91	40.93	59.94	59.04	69.54	62.44	65.33	53.21
22	66.22	47.67	28.76	24.42	23.19	36.05	59.49	58.02	69.45	65.02	59.62	52.07
23	67.18	52.84	26.86	24.24	19.43	38.70	57.49	64.47	64.36	68.53	58.49	61.88
24	72.53	46.91	31.10	23.70	23.29	38.77	55.94	59.16	67.36	66.59	49.72	52.27
25	73.61	19.96	26.80	20.39	20.58	39.34	62.74	58.82	89.54	62.85	60.85	43.23
26	59.40	57.04	23.14	24.16	20.34	39.97	64.96	58.77	88.95	63.18	64.23	53.45
27	51.00	56.27	23.52	25.77	21.88	39.48	70.05	70.35	90.38	56.47	63.14	57.52
28	53.62	56.95	23.36	24.23	22.46	40.10	33.51	71.69	60.91	56.08	69.62	62.27
29	30.71	-	27.15	24.17	22.55	61.67	58.44	69.88	61.52	58.76	76.09	52.17
30	56.11	-	27.47	21.71	21.59	44.31	80.15	69.78	66.35	59.89	57.58	51.81
31	61.98	-	26.83	-	18.68	-	60.49	60.56	-	62.46	-	51.00
Min	30.71	19.96	23.14	20.39	11.91	19.32	33.51	64.26	53.94	50.70	49.72	43.23
Mean	64.88	49.80	42.80	23.50	22.00	32.09	54.81	74.08	72.77	63.54	65.21	62.17
Max	80.80	57.04	69.64	25.77	25.95	61.67	80.15	94.22	90.38	76.01	91.74	82.20
Annual Mean	<b>52.30</b>											



National Power Corporation  
**MINDANAO GENERATION**  
 Maria Cristina, Iligan City

**OPERATIONS PLANNING DEPARTMENT**

**DAMS, RESERVOIRS and WATERWAYS MANAGEMENT DIVISION**

**2020 LAKE LANAO DAILY AVERAGE OUTFLOW (in CMS)**

(Calendar Month)

DAY	JAN	FEB	MAR	APR	MAY	JUN	JUL	AUG	SEP	OCT	NOV	DEC
1	49.36	32.32	28.51	24.89	24.26	31.78	38.84	88.98	124.65	115.90	163.66	98.16
2	49.48	31.51	28.20	24.44	23.92	31.16	44.66	84.09	115.63	112.85	163.77	98.16
3	47.37	31.19	33.54	23.58	24.86	32.05	45.67	95.27	124.47	109.98	163.91	95.18
4	48.17	34.18	26.89	21.15	26.80	39.67	38.65	82.90	122.72	104.70	152.67	94.17
5	49.31	32.31	23.63	23.11	25.49	38.15	33.49	103.55	114.22	118.90	164.71	93.58
6	53.84	32.19	24.03	24.70	26.04	30.51	39.38	106.90	105.94	123.82	155.84	93.91
7	50.52	37.31	23.17	26.08	25.62	29.18	50.74	97.76	125.73	137.76	156.17	95.33
8	54.94	33.06	26.52	25.90	26.04	28.46	54.74	97.55	109.44	111.68	150.06	95.79
9	53.90	31.44	26.40	24.84	26.05	33.13	63.49	95.20	104.66	138.69	158.02	97.69
10	49.82	32.32	29.66	24.72	24.84	34.30	54.93	93.75	101.11	109.24	157.71	95.40
11	50.71	31.88	29.10	25.89	25.23	35.36	49.00	100.16	92.35	122.56	160.35	101.79
12	50.15	31.92	25.80	24.92	25.25	30.78	48.77	97.68	87.76	128.70	133.87	101.40
13	54.45	29.50	23.27	25.12	24.51	31.67	63.80	87.87	99.30	136.34	168.03	100.51
14	59.89	31.33	26.45	25.56	21.15	35.78	63.52	104.80	93.27	138.77	140.12	104.90
15	56.33	30.16	26.66	25.27	24.99	34.92	60.48	104.39	99.35	139.13	127.48	95.97
16	50.14	33.89	25.82	25.45	25.28	33.05	62.25	96.71	96.29	138.38	127.48	102.40
17	50.81	31.61	27.69	22.98	25.44	44.93	65.49	110.62	98.98	133.62	121.74	115.06
18	47.76	34.63	28.89	23.41	24.34	42.12	42.84	112.64	120.82	144.80	122.23	115.38
19	52.58	30.83	33.62	23.25	31.17	38.78	59.71	102.08	97.40	152.25	122.62	99.93
20	51.85	19.32	29.44	22.55	29.21	35.84	69.73	93.61	109.01	153.73	122.48	126.83
21	48.42	30.82	22.67	23.65	34.25	36.76	71.50	126.06	110.62	160.89	121.52	130.22
22	52.45	32.07	24.00	23.70	26.60	35.38	75.70	113.51	110.44	163.05	121.75	120.70
23	48.12	28.18	28.40	23.41	26.55	41.97	83.33	118.25	110.45	165.96	122.79	125.85
24	49.04	31.03	28.40	24.49	30.42	41.57	65.37	127.64	106.76	163.50	120.40	125.73
25	49.68	28.63	27.06	24.03	29.90	42.25	74.83	139.77	111.68	163.40	121.70	124.85
26	51.57	30.55	28.74	23.51	32.69	34.41	55.92	129.64	100.70	165.03	105.25	109.52
27	54.66	15.88	31.36	22.64	30.72	29.64	61.33	129.23	94.21	166.10	107.21	117.91
28	55.99	25.47	25.81	17.21	32.08	23.66	70.09	107.98	101.63	166.36	104.80	124.99
29	45.91	27.38	23.69	25.28	31.53	32.13	71.77	109.11	103.06	139.24	98.08	128.63
30	33.04	-	24.44	24.40	33.50	43.74	71.99	103.19	101.17	164.55	98.63	129.11
31	34.41	-	24.27	-	28.38	-	74.78	110.02	-	165.08	-	125.27
Min	33.04	15.88	22.67	17.21	21.15	23.66	33.49	82.90	87.76	104.70	98.08	93.58
Mean	50.15	30.45	26.97	24.00	27.33	35.10	58.93	105.51	106.46	140.48	135.17	109.17
Max	59.89	37.31	33.62	26.08	34.25	44.93	83.33	139.77	125.73	166.36	168.03	130.22
Annual Mean	<b>70.81</b>											



**National Power Corporation**  
**MINDANAO GENERATION**  
 Maria Cristina, Iligan City

**OPERATIONS PLANNING DEPARTMENT**

**DAMS, RESERVOIRS and WATERWAYS MANAGEMENT DIVISION**

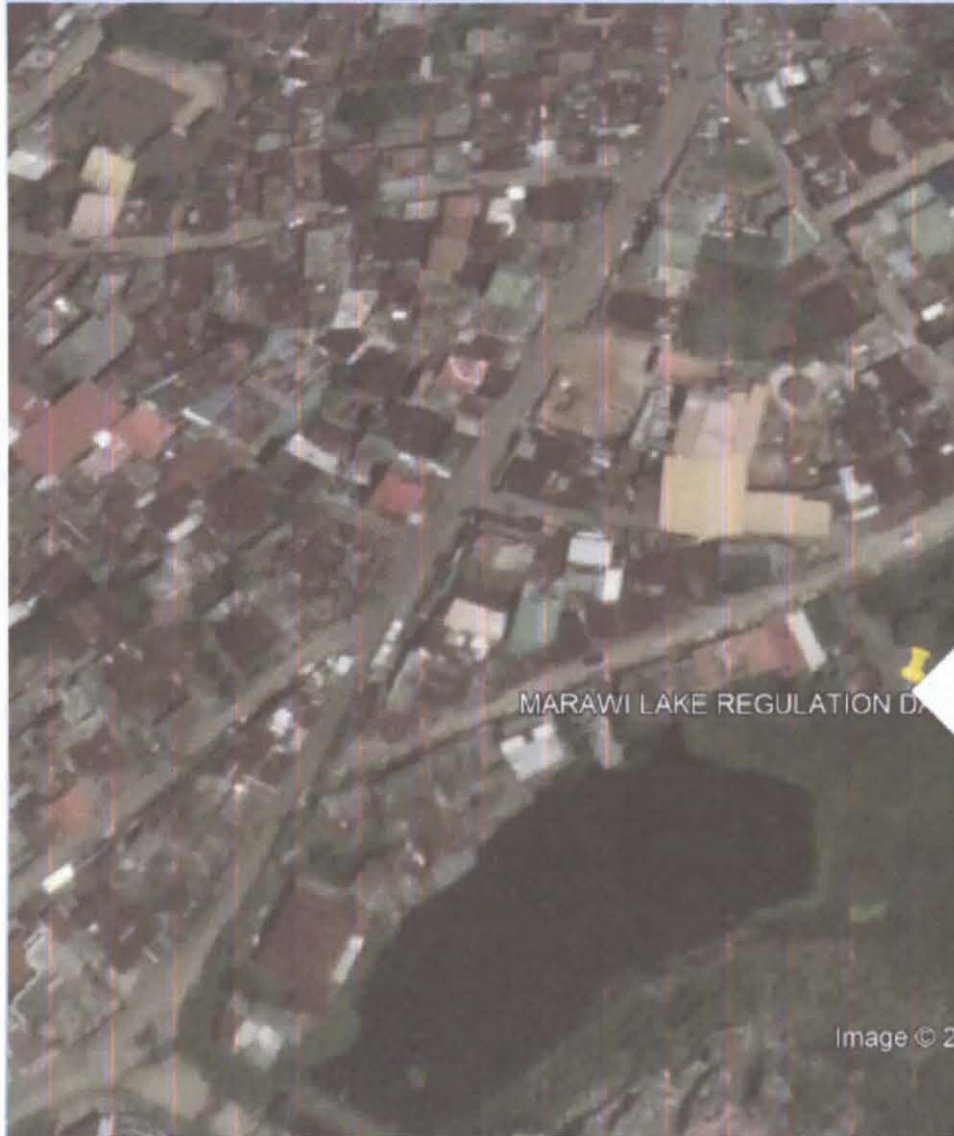
**2021 LAKE LANA O DAILY AVERAGE OUTFLOW (in CMS)**

(Calendar Month)

DAY	JAN	FEB	MAR	APR	MAY	JUN	JUL	AUG	SEP	OCT	NOV	DEC
1	124.32	157.16	74.60	57.79	103.07	157.59	152.50	108.09	107.85	160.88	167.06	165.19
2	123.39	157.50	76.79	51.27	111.21	157.32	145.16	104.31	118.47	159.73	182.40	166.35
3	125.55	157.69	74.84	48.27	103.12	156.98	139.61	103.85	124.62	156.12	169.27	163.94
4	123.30	155.47	78.92	52.41	105.31	158.60	151.73	101.95	113.33	159.49	154.70	156.33
5	125.45	156.66	76.50	63.92	117.99	146.94	155.56	109.12	111.20	161.81	151.62	145.46
6	123.98	156.11	75.23	66.14	116.01	140.53	129.60	117.36	121.67	163.12	155.28	157.71
7	122.80	155.88	72.57	69.12	89.20	149.06	110.54	121.43	130.98	163.60	155.27	162.35
8	123.31	157.12	70.32	68.52	81.85	147.00	123.87	111.89	137.69	161.95	160.16	167.57
9	124.95	158.88	68.90	76.92	87.90	145.16	113.80	102.18	138.12	161.20	140.98	149.89
10	124.52	165.52	69.06	77.79	87.12	157.88	121.61	110.49	138.36	160.26	140.88	146.28
11	124.89	144.97	68.65	86.28	111.50	156.44	122.74	118.16	138.80	160.91	145.73	147.18
12	123.97	132.86	69.30	86.43	117.11	137.13	119.61	118.09	138.33	161.28	143.90	131.38
13	124.30	122.22	69.30	98.05	126.41	156.82	144.50	115.27	138.48	161.11	144.28	106.40
14	124.30	122.49	69.42	102.28	122.95	154.13	141.63	112.72	93.67	163.93	144.20	85.33
15	125.54	114.32	75.80	101.21	128.06	155.96	143.50	112.07	144.54	164.47	162.65	119.37
16	128.86	102.60	70.83	108.60	130.82	154.36	143.34	109.27	142.58	168.62	148.77	92.41
17	133.56	119.55	85.84	109.20	142.24	153.19	136.47	113.61	146.11	167.25	154.57	95.65
18	144.45	109.97	83.95	110.72	135.67	156.74	131.92	115.03	144.73	146.85	167.44	147.94
19	160.64	115.75	76.01	110.02	133.43	158.19	139.31	118.33	151.22	124.10	177.91	147.32
20	157.92	123.40	72.74	110.82	134.12	151.60	142.38	115.78	148.97	125.21	182.78	143.83
21	148.23	119.18	66.34	110.39	133.87	160.61	150.07	113.47	156.23	124.60	160.20	148.33
22	159.34	122.87	69.05	111.05	127.50	153.69	145.05	112.86	155.65	124.63	164.00	145.37
23	160.05	124.82	71.61	98.36	133.66	153.43	131.82	111.74	159.68	124.38	166.93	158.58
24	160.41	106.16	60.61	95.61	134.03	154.89	118.63	110.65	157.60	127.28	176.85	154.86
25	160.59	81.96	53.30	107.20	135.94	154.61	169.19	113.15	156.71	136.02	170.01	172.57
26	160.68	74.66	58.44	107.66	155.53	154.87	114.20	114.44	156.58	141.02	168.05	118.87
27	160.86	74.81	57.99	105.76	148.44	150.06	100.64	112.71	160.13	132.98	159.66	128.30
28	160.02	73.22	57.01	103.69	154.40	150.73	120.67	102.14	160.80	150.69	148.06	142.90
29	158.20	-	56.68	101.60	159.15	156.79	106.56	100.21	163.39	149.49	159.19	145.13
30	157.64	-	60.05	106.22	157.59	153.54	107.26	109.13	167.10	158.13	152.36	144.14
31	157.00	-	58.02	-	155.81	-	100.49	115.81	-	154.91	-	136.40
Min	122.80	73.22	53.30	48.27	81.85	137.13	100.49	101.95	93.67	124.10	140.88	85.33
Mean	139.78	127.28	69.31	90.11	125.19	153.16	131.42	111.46	140.79	150.84	159.17	141.72
Max	160.86	165.52	85.84	111.05	159.15	160.61	169.19	121.43	167.10	168.62	182.78	172.57
Annual Mean	<b>128.35</b>											



## MARAWI LAKE REGULATION DAM – WATER LEVEL STATION





## AGUS 1 HPP POWER INTAKE – WATER LEVEL STATION

