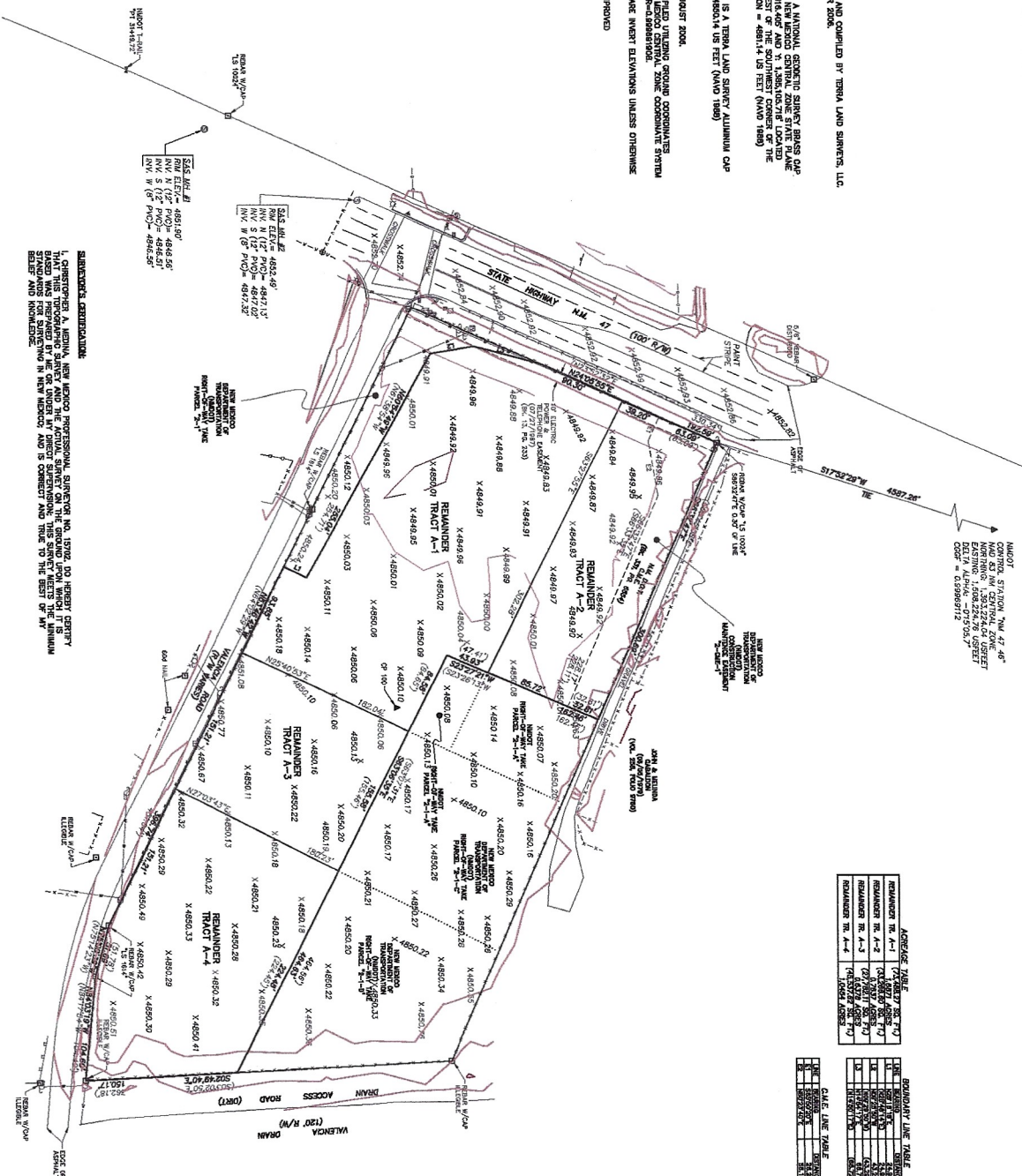


SURVEY DESCRIPTION
 TOPOGRAPHIC SURVEY PERFORMED AND COMPILED BY TERRA LAND SURVEYS, LLC.
 PROJECTED IN NAD 83 FOR TERRA 2008.

1. FIELD SURVEY PERFORMED IN AUGUST 2008.
2. TOPOGRAPHIC SURVEY WAS CONDUCTED USING DYNAMIC GROUND COMPENSATED GPS WITH REAL TIME KINEMATIC (RTK) CORRECTIONS. APPROXIMATE VALUES OF X, Y, Z ELEVATION AND N, E, MAGNETIC LOCATED APPROXIMATELY 1/8 MILE WEST OF THE SOUTHWEST CORNER OF THE REMAINDER TRACTS. ELEVATION = 4841.15 FT (1476.26 M).
3. DEVIATIONS SHOWN FOR PINS ARE INVERT ELEVATIONS UNLESS OTHERWISE SPECIFIED.
4. PROPERTY IS VACANT AND UNIMPROVED.

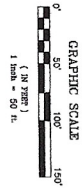


ADJACENT PLATS

PLAT NO.	OWNER	DATE
REMAINDER TRACT A-1	CHRISTOPHER A. WERNIA	08/28/2008
REMAINDER TRACT A-2	CHRISTOPHER A. WERNIA	08/28/2008
REMAINDER TRACT A-3	CHRISTOPHER A. WERNIA	08/28/2008
REMAINDER TRACT A-4	CHRISTOPHER A. WERNIA	08/28/2008

BOUNDARY LINE TABLE

LINE NO.	START POINT	END POINT	BEARING	DISTANCE
1	X4850.01	X4850.02	N 89° 59' 59" W	0.01
2	X4850.02	X4850.03	N 89° 59' 59" W	0.01
3	X4850.03	X4850.04	N 89° 59' 59" W	0.01
4	X4850.04	X4850.05	N 89° 59' 59" W	0.01
5	X4850.05	X4850.06	N 89° 59' 59" W	0.01
6	X4850.06	X4850.07	N 89° 59' 59" W	0.01
7	X4850.07	X4850.08	N 89° 59' 59" W	0.01
8	X4850.08	X4850.09	N 89° 59' 59" W	0.01
9	X4850.09	X4850.10	N 89° 59' 59" W	0.01
10	X4850.10	X4850.11	N 89° 59' 59" W	0.01
11	X4850.11	X4850.12	N 89° 59' 59" W	0.01
12	X4850.12	X4850.13	N 89° 59' 59" W	0.01
13	X4850.13	X4850.14	N 89° 59' 59" W	0.01
14	X4850.14	X4850.15	N 89° 59' 59" W	0.01
15	X4850.15	X4850.16	N 89° 59' 59" W	0.01
16	X4850.16	X4850.17	N 89° 59' 59" W	0.01
17	X4850.17	X4850.18	N 89° 59' 59" W	0.01
18	X4850.18	X4850.19	N 89° 59' 59" W	0.01
19	X4850.19	X4850.20	N 89° 59' 59" W	0.01
20	X4850.20	X4850.21	N 89° 59' 59" W	0.01
21	X4850.21	X4850.22	N 89° 59' 59" W	0.01
22	X4850.22	X4850.23	N 89° 59' 59" W	0.01
23	X4850.23	X4850.24	N 89° 59' 59" W	0.01
24	X4850.24	X4850.25	N 89° 59' 59" W	0.01
25	X4850.25	X4850.26	N 89° 59' 59" W	0.01
26	X4850.26	X4850.27	N 89° 59' 59" W	0.01
27	X4850.27	X4850.28	N 89° 59' 59" W	0.01
28	X4850.28	X4850.29	N 89° 59' 59" W	0.01
29	X4850.29	X4850.30	N 89° 59' 59" W	0.01
30	X4850.30	X4850.31	N 89° 59' 59" W	0.01
31	X4850.31	X4850.32	N 89° 59' 59" W	0.01
32	X4850.32	X4850.33	N 89° 59' 59" W	0.01
33	X4850.33	X4850.34	N 89° 59' 59" W	0.01
34	X4850.34	X4850.35	N 89° 59' 59" W	0.01
35	X4850.35	X4850.36	N 89° 59' 59" W	0.01
36	X4850.36	X4850.37	N 89° 59' 59" W	0.01
37	X4850.37	X4850.38	N 89° 59' 59" W	0.01
38	X4850.38	X4850.39	N 89° 59' 59" W	0.01
39	X4850.39	X4850.40	N 89° 59' 59" W	0.01
40	X4850.40	X4850.41	N 89° 59' 59" W	0.01



LEGEND

- ▲ CONTROL POINT
- T-ALL MONUMENT
- TELEPHONE RISER
- LIGHT POLE W/PROSSUMASKY
- TRAFFIC LIGHT
- CABLE TV RISER
- POWER METER
- POWER POLE
- POWER METER
- STREET SIGN
- CHAIN LINK FENCE
- RAILROAD TIE FENCE
- FENCE
- OVERHEAD ELECTRIC LINE
- UNDERGROUND WATER LINE
- UNDERGROUND TELEPHONE LINE
- SPOT ELEVATIONS

Christopher A. Wernia
 CHRISTOPHER A. WERNIA, SURV. NO. 10702
 AUGUST 28, 2008



TOPOGRAPHIC SURVEY
 TRACTS A-1 THRU A-4
 LOS LUNAS
 VALLENTIA COUNTY, NEW MEXICO

TERRA LAND SURVEYS, LLC
 P.O. BOX 7357 • CORRALITOS NEW MEXICO • (505) 783-8835

DESIGNER: PHF PROJECT NO.: 700644
 CHECKED BY: CWM DATE: AUGUST 2008 SHEET 1 OF 1