

The Colliers logo is located in the top right corner. It consists of the word "Colliers" in a white serif font, set against a blue rectangular background with a thin yellow and red horizontal stripe at the bottom.The background image is a photograph of a single-story commercial building with a tan stucco finish. The building has several windows with dark frames and a central entrance with a red wooden pergola. The address "9200" is visible on the right side of the building. A black SUV is parked in the foreground on the right, and a blue handicapped parking sign is visible. The sky is clear and blue.

**PRECISION**  
SURVEYS, INC.

# For Lease

9200 San Mateo Blvd NE  
Albuquerque, NM 87113

**Keith Bandoni, CCIM, SIOR**

SR. VP | Principal  
+1 505 880 7015  
keith.bandoni@colliers.com  
Lic. No. 14472

Colliers | New Mexico-El Paso  
5051 Journal Center Blvd. NE, Suite 200  
Albuquerque, NM 87109  
Main: +1 505 883 7676  
colliers.com



9200 San Mateo Blvd NE | For Lease

# Property Profile

## Details

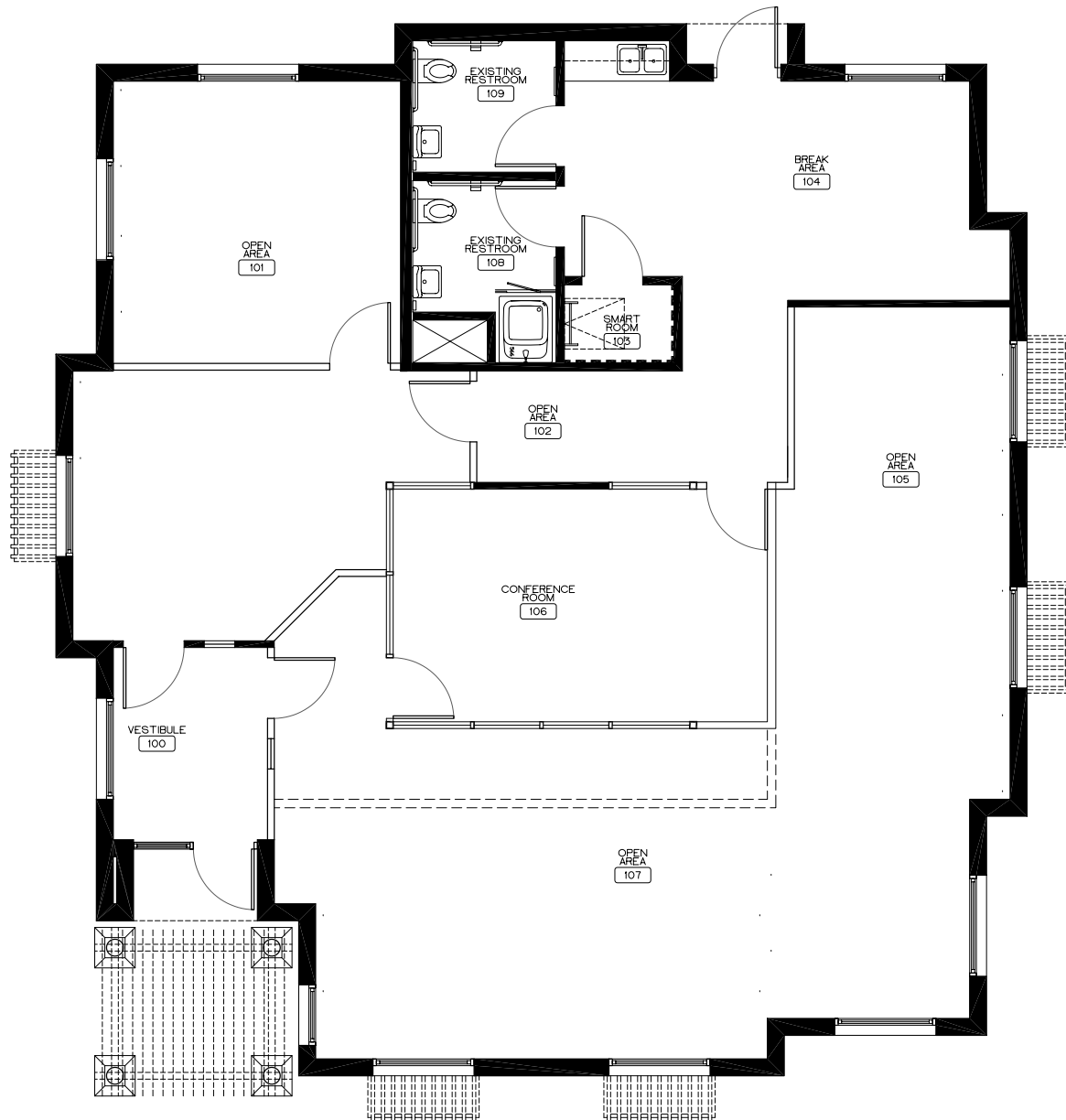
|                 |   |
|-----------------|---|
| Lease Rate      | \$19.50 PSF                                   |
| Lease Type      | Modified Gross                                |
| Space Available | ± 2,275 SF                                    |
| Lot Size        | 0.43 Acres                                    |
| Parking         | ±5:1,000                                      |
| Submarket       | North I-25                                    |
| Zoning          | NR-LM (Non-Residential – Light Manufacturing) |

## Features

- Located within Verano Plaza
- Small Office Campus
- Single Tenant Office Building
- Located at the corner of San Mateo Blvd and San Diego Ave NE
- Excellent visibility and Building Signage
- Class A construction
- Energy Efficient building built with Rastra Block
- Raised floor with underfloor ventilation
- Xfinity Fiber for communication



# Floor Plan





9200 San Mateo Blvd NE | For Lease

# Trade Area Aerial





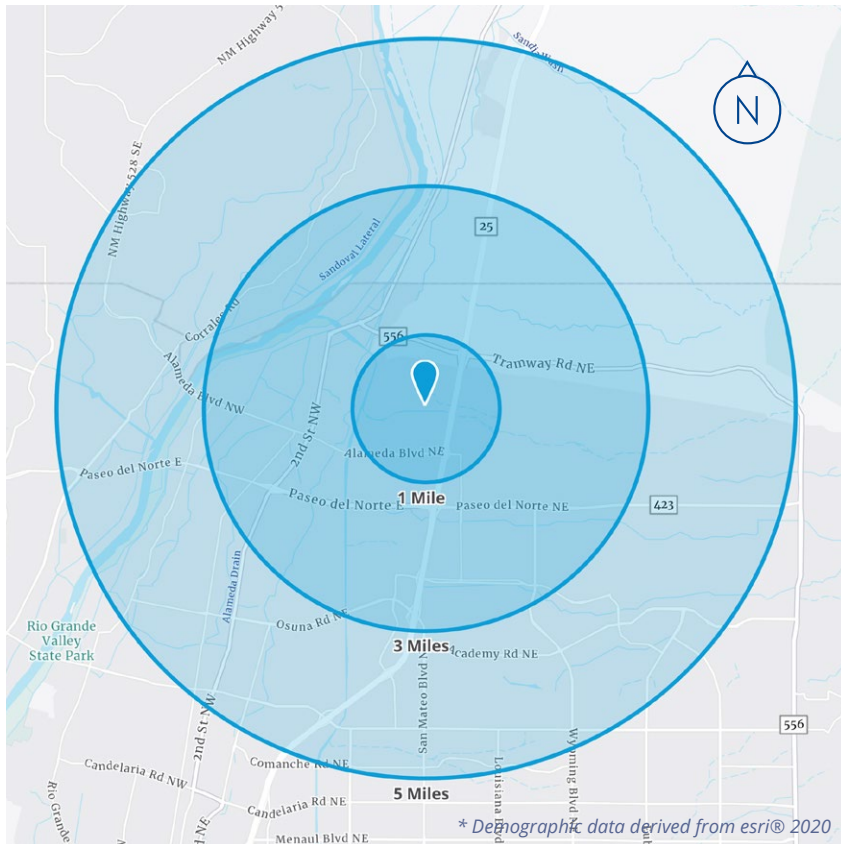
9200 San Mateo Blvd NE | For Lease

# Intersection Aerial





# Demographics\*



|                    | 1 MILE   | 3 MILES   | 5 MILES   |
|--------------------|----------|-----------|-----------|
| Population         | 2,571    | 46,247    | 139,476   |
| Households         | 1,274    | 19,833    | 62,110    |
| Median Age         | 37.9     | 44.2      | 43.1      |
| Average HH Income  | \$97,360 | \$118,836 | \$113,535 |
| Per Capita Income  | \$41,749 | \$50,998  | \$50,611  |
| Daytime Population | 11,655   | 71,210    | 184,261   |
| College Education  | 52.2%    | 58.6%     | 58.3%     |



Colliers | New Mexico-El Paso  
5051 Journal Center Blvd. NE, Suite 200  
Albuquerque, NM 87109  
Main: +1 505 883 7676  
[colliers.com](http://colliers.com)

This document has been prepared by Colliers International for advertising and general information only. Colliers International makes no guarantees, representations or warranties of any kind, expressed or implied, regarding the information including, but not limited to, warranties of content, accuracy and reliability. Any interested party should undertake their own inquiries as to the accuracy of the information. Colliers International excludes unequivocally all inferred or implied terms, conditions and warranties arising out of this document and excludes all liability for loss and damages arising there from. This publication is the copyrighted property of Colliers International and/or its licensor(s). William Robertson, Qualifying Broker — Lic. #8433 ©2025 All rights reserved.

**Keith Bandoni, CCIM, SIOR**  
SR. VP | Principal  
+1 505 880 7015  
[keith.bandoni@colliers.com](mailto:keith.bandoni@colliers.com)  
Lic. No. 14472