

RANCHO CIELO

Albuquerque International Airport
11 Miles

SOLAR FARM

Ample Buffer Zone
From Existing Neighbors






14,000 LINEAR FEET OF RAIL

Multiple approved rail spurs available to existing BNSF Transcontinental Line

Industrial Zoning In Place

DESIGNATED INDUSTRIAL PARK – TOWN OF BELEN

±760 Acres

Water		Water rights required and some re-use need is likely
Sewer		Self-contained plant would be installed
Power		Public Service of New Mexico: 3-phase power on site
Natural Gas		Existing 12" (600-800 PSI) high pressure main at property line.
Alternative Energy Options		Solar: Ample acreage available. High pressure gas line facilitates dedicated electrical generation facility.
Zoning		Existing Industrial zoning for southern 760 acres.
Rail		Entire 5,500 Acres front on the BNSF Transcontinental line, 14,000 linear feet.

Wet Utility Infrastructure In Place

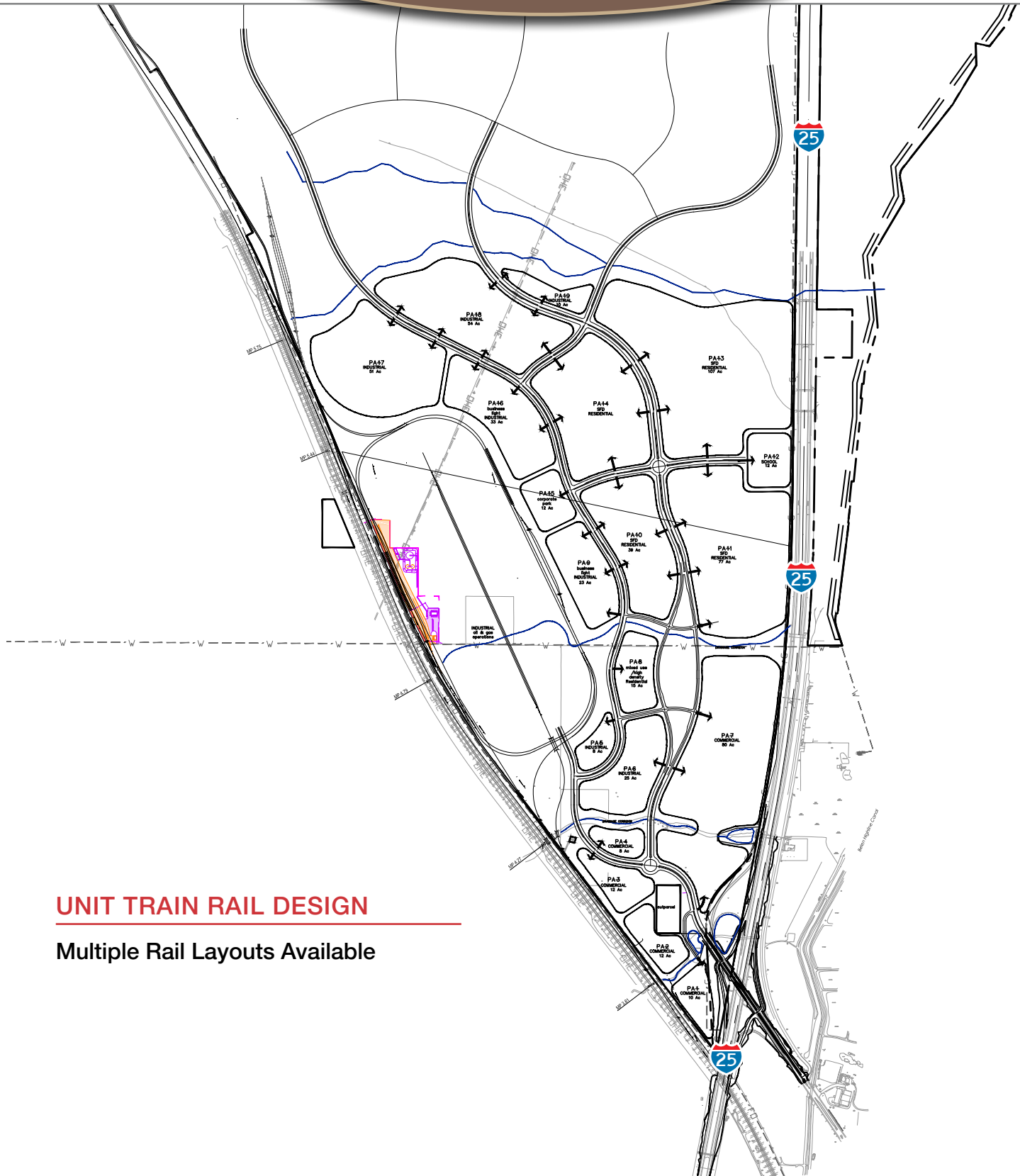
Exit 195

Alexander Executive Airport
4 Miles

0 0.7 mi

0 1 km

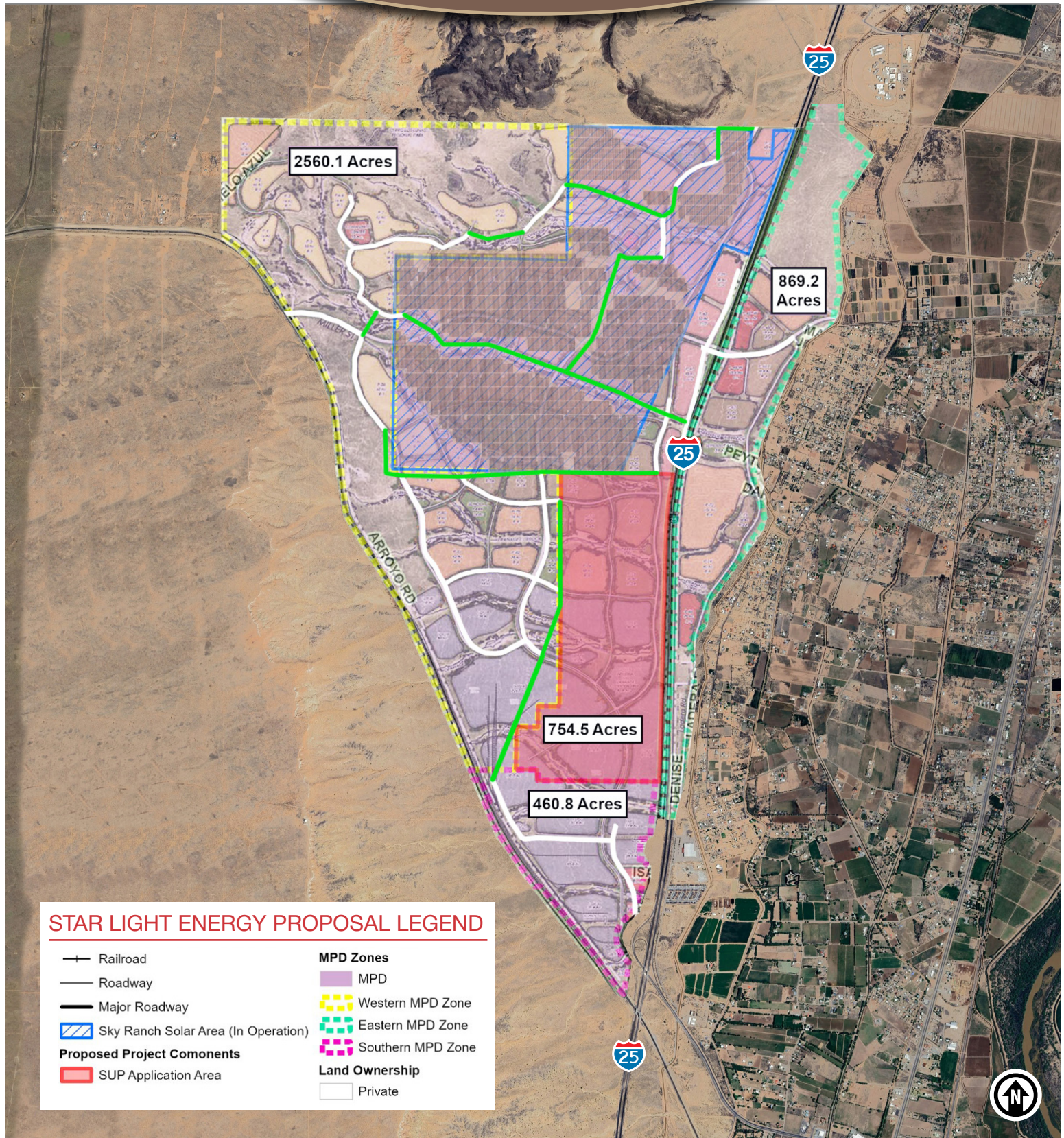
RANCHO CIELO



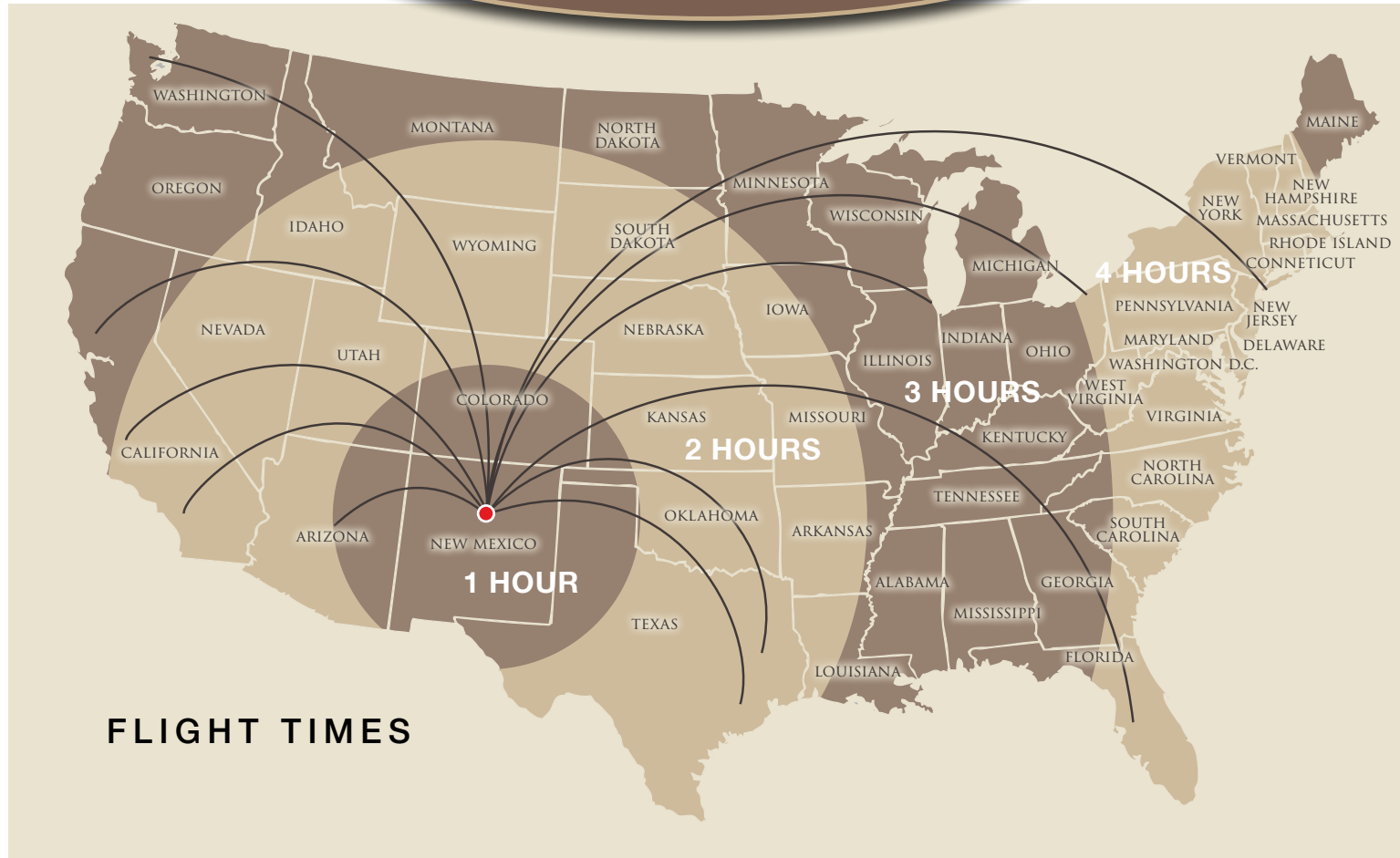
UNIT TRAIN RAIL DESIGN

Multiple Rail Layouts Available

RANCHO CIELO



RANCHO CIELO



AIRLINES

Albuquerque is served by eight major, commercial carriers and also receives regular in-state service from commuter airlines.



DEMOGRAPHICS



There is a total population of more than **840,000** within 40 miles of Rancho Cielo

Demographics	1 mile	3 mile	5 mile
Total Population	65,838	93,812	844,869
Average HH Income	\$79,308	\$78,093	\$95,026
Daytime Employment	14,662	19,596	389,075

2024 Forecasted by Esri