

FINAL PLAT FOR THE PUEBLOS AT ALAMEDA RANCH, PHASE 3 A PLANNED UNIT DEVELOPMENT AND A REPLAT OF PARCELS 4 AND 5, ALAMEDA RANCH PLAT RECORDED NOVEMBER 28, 2001 IN PLAT RECORD 19, PAGES 765-769 OF THE DONA ANA COUNTY RECORDS CITY OF LAS CRUCES, DONA ANA COUNTY, NEW MEXICO SCALE: 1"=100' DECEMBER 12, 2007

DEDICATION

A TRACT OF LAND SHOWN HEREON IS TO BE KNOWN AS THE PUEBLOS AT ALAMEDA RANCH, PHASE 3 AND CONTAINS 85.154 ACRE OF LAND, MORE OR LESS.

ALL INTERNAL ROADS ARE PRIVATE AND WILL BE PRIVATELY MAINTAINED WITH THE EXCEPTION OF SONOMA RANCH BLVD., CALLE ABUELO, AND THE SMALL SECTION OF PEGASUS ROAD FROM SONOMA RANCH BLVD. TO THE GATE ENTRY OF THE COMMUNITY. UTILITY EASEMENTS ARE GRANTED FOR THE USE OF THE UTILITY COMPANIES THAT ARE SIGNATORY TO THIS PLAT AND TO THE CITY OF LAS CRUCES. ALL RULES AND REGULATIONS OF THE CITY OF LAS CRUCES AND SAID UTILITIES WILL APPLY TO THESE EASEMENTS. ALL OTHER EASEMENTS SHOWN HEREON ARE GRANTED FOR THE USE INDICATED. NO ENCROACHMENT THAT WILL INTERFERE WITH THE USE OF EASEMENTS AS SHOWN ON THIS PLAT IS ALLOWED.

THE SUBDIVISION HAS BEEN DEDICATED IN ACCORDANCE WITH THE WISHES OF THE UNDERSIGNED OWNER(S) OF THE LAND SHOWN HEREON. IN WITNESS WHEREOF SAID

OWNERS HAS SET HIS HAND AND SEAL THIS 18TH DAY OF December 2007

John T. Moscato, President
JOHN T. MOSCATO, PRESIDENT
BRIGHT VIEW LAND COMPANY
P.O. BOX 1050
FAIRACRES, NM. 88033

JOHN T. MOSCATO, PRESIDENT
BRIGHT VIEW LAND COMPANY
P.O. BOX 1050
FAIRACRES, NM. 88033

ACKNOWLEDGMENT

STATE OF NEW MEXICO) SS.
COUNTY OF DONA ANA)

THE FOREGOING INSTRUMENT WAS ACKNOWLEDGED BEFORE ME THIS

18th DAY OF Dec 2007 BY

BY JOHN T. MOSCATO

Kerry W. Greiner
NOTARY PUBLIC

NOTARY SEAL
KERRY W. GREINER
NOTARY PUBLIC, STATE OF NEW MEXICO
8-7-11

DONA ANA COUNTY CLERK

PLAT NO: 4088 RECEPTION NO: 02448

STATE OF NEW MEXICO)
COUNTY OF DONA ANA)

I HEREBY CERTIFY THAT THIS INSTRUMENT WAS FILED FOR RECORD

ON THIS 28 DAY OF Jan 2008 AT 11:10 O'CLOCK

PM AND DULY RECORDED IN PLAT RECORD 22

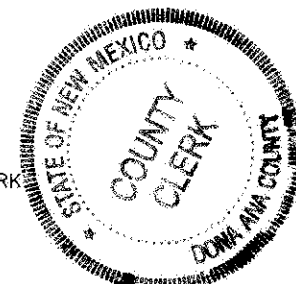
PAGE(S) 106-16 IN THE RECORDS OF THE DONA ANA COUNTY CLERK

BY: Rita Torres
DONA ANA COUNTY CLERK

DATE: 1/28/08

BY: Cindy Q
DONA ANA COUNTY DEPUTY CLERK

DATE: 1/28/08

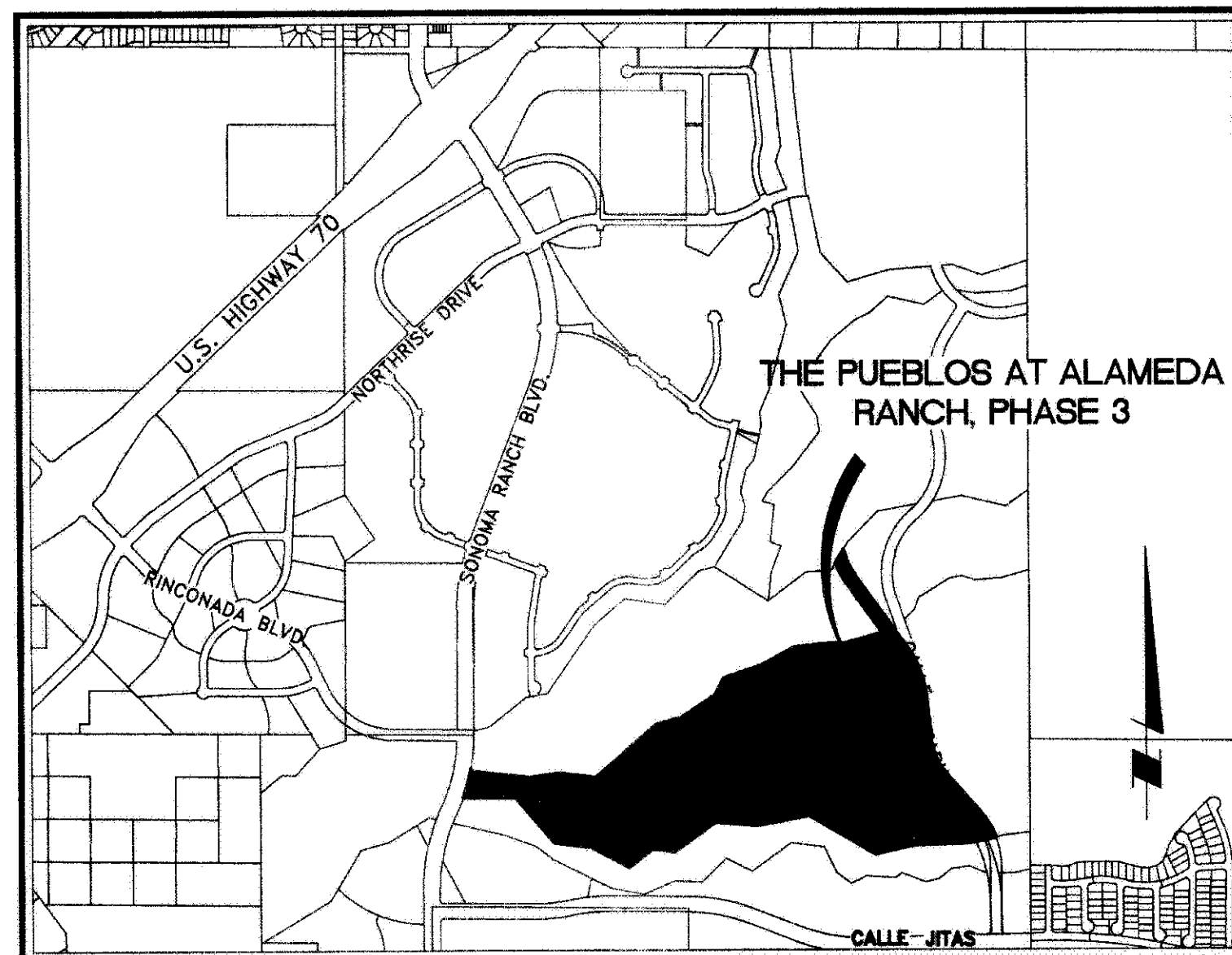


OWNERSHIP

JOHN T. MOSCATO, PRESIDENT
BRIGHT VIEW LAND COMPANY
P.O. BOX 1050
FAIRACRES, NM. 88033
DEED BOOK 684, PAGE 887
FILED: FEBRUARY 3, 2005

SHEET INDEX

DEDICATION SHEET	1 OF 5
PLAT SHEET	2 OF 5
PLAT SHEET	3 OF 5
PLAT SHEET	3 OF 5



VICINITY MAP

NOT TO SCALE

UTILITY APPROVALS

THIS PLAT HAS BEEN APPROVED FOR EASEMENT PURPOSES ONLY. THE SIGNING OF THIS PLAT DOES NOT IN ANY WAY GUARANTEE UTILITY SERVICE BY THE UNDERSIGNED UTILITY COMPANIES TO THE SUBDIVISION.

EL PASO ELECTRIC COMPANY

EASEMENTS SHOWN HEREON, COPIES OF WHICH HAVE BEEN PRESENTED TO THE ELECTRIC COMPANY, ARE SATISFACTORY TO MEET THE NEEDS FOR THE INSTALLATION OF (UNDERGROUND ONLY) (OVERHEAD ONLY) (UNDERGROUND AND/OR OVERHEAD) (UNDERGROUND AND DESIGNATED OVERHEAD FEEDER) ELECTRICAL UTILITIES.

BY: Matt Morosan DATE: 12/17/07

COMCAST CABLE COMMUNICATIONS INC.

EASEMENTS SHOWN HEREON, COPIES OF WHICH HAVE BEEN PRESENTED TO THE ABOVE MENTIONED CABLE TV COMPANY, ARE SATISFACTORY TO MEET THE NEEDS FOR THE INSTALLATION OF (UNDERGROUND ONLY) (OVERHEAD ONLY) (UNDERGROUND AND/OR OVERHEAD) (UNDERGROUND AND DESIGNATED OVERHEAD FEEDER) CABLE TV COMPANY UTILITIES.

BY: [Signature] DATE: 12/17/07

QWEST COMMUNICATIONS, INC.

EASEMENTS SHOWN HEREON, COPIES OF WHICH HAVE BEEN PRESENTED TO QWEST COMMUNICATIONS, ARE SATISFACTORY TO MEET THE NEEDS FOR THE INSTALLATION OF (UNDERGROUND ONLY) (OVERHEAD ONLY) (UNDERGROUND AND/OR OVERHEAD) (UNDERGROUND AND DESIGNATED OVERHEAD FEEDER) TELEPHONE COMPANY UTILITIES.

BY: Jane Lin DATE: 12-18-07

CITY OF LAS CRUCES APPROVALS

THIS PLAT HAS BEEN APPROVED BY THE CITY OF LAS CRUCES. ALL THE REQUIREMENTS FOR APPROVAL IN THE ABOVE PLAT HAVE BEEN COMPLIED WITH TO THE SATISFACTION OF THE CITY OF LAS CRUCES. SUBJECT TO ANY AND ALL CONDITIONS REQUIRED BY THE PLANNING AUTHORITY FOR APPROVAL OF THE PLAT.

BY: David Wein DATE: 12-21-07
DIRECTOR OF COMMUNITY DEVELOPMENT

BY: Jose A. Gawn DATE: 1/16/08
DIRECTOR OF UTILITIES

BY: Muelly DATE: 1-04-08
DIRECTOR OF PUBLIC WORKS

CITY PLANNING AND ZONING COMMISSION APPROVAL

THIS PLAT HAS BEEN SUBMITTED TO AND CHECKED BY THE CITY OF LAS CRUCES PLANNING AND ZONING COMMISSION. IT CONCURS WITH THE EXPANSION OF EXISTING UTILITIES AND THOROUGHFARES AND IS IN ACCORDANCE WITH GENERAL CITY PLANNING. APPROVED FOR FILING WITH THE COUNTY CLERK.

BY: Chris B. Sch DATE: 1/24/08
CHAIRMAN

BY: [Signature] DATE: 1/24/08
SECRETARY

SURVEYOR'S CERTIFICATION

I, KERY W. GREINER, A NEW MEXICO PROFESSIONAL SURVEYOR, CERTIFY THAT I CONDUCTED AND AM RESPONSIBLE FOR THIS SURVEY, THAT THIS SURVEY IS TRUE AND CORRECT TO THE BEST OF MY KNOWLEDGE AND BELIEF AND THAT THIS SURVEY AND PLAT MEET THE MINIMUM STANDARDS FOR SURVEYING IN NEW MEXICO.

BY: Kerry W. Greiner DATE: 12-18-07
KERY W. GREINER, PS 9761



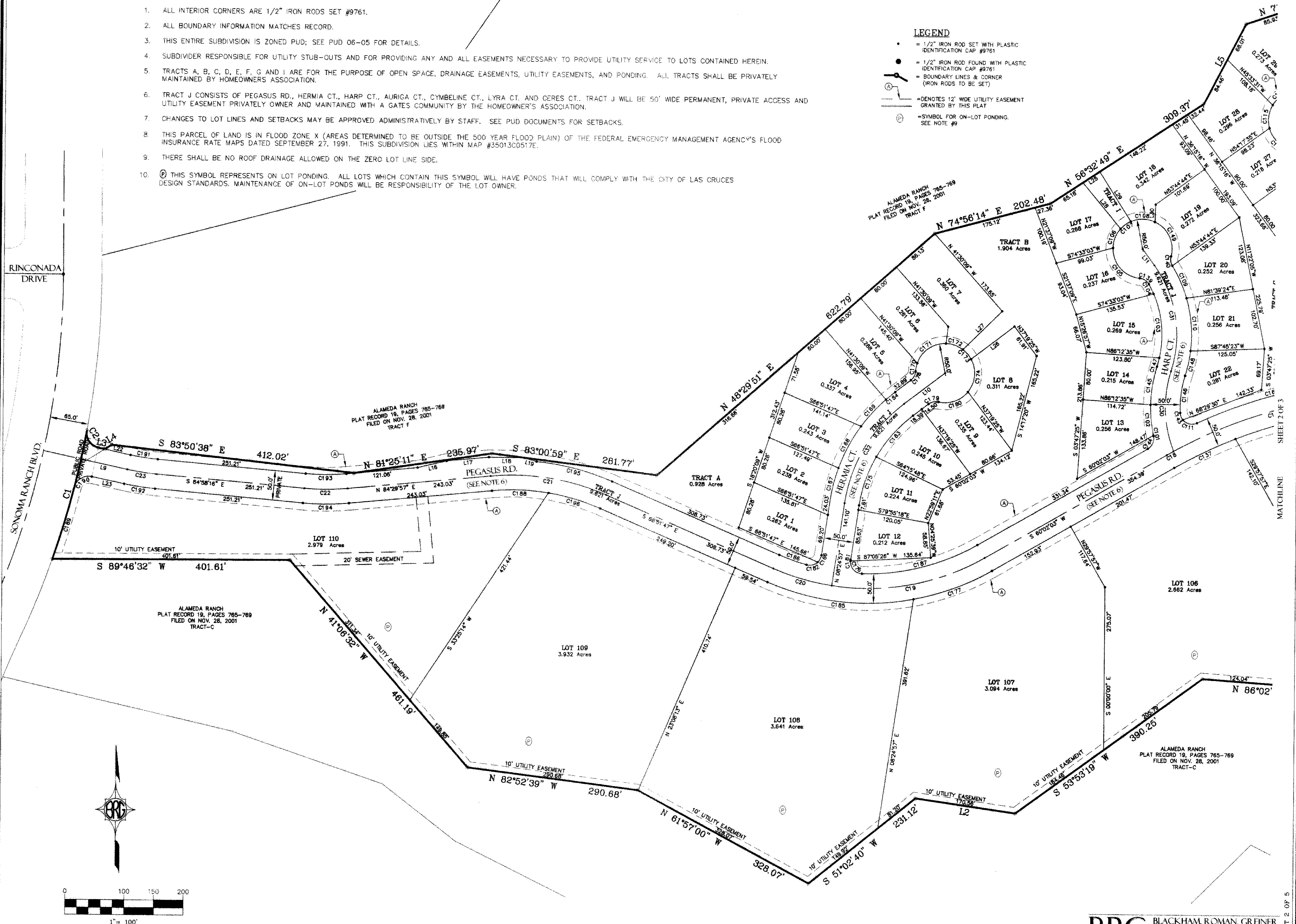
BRG BLACKHAM, ROMAN, GREINER
AND ASSOCIATES, INC.
ENGINEERING · PLANNING · SURVEYING
1203 MED PARK DR., LAS CRUCES, NM 88005 · (505) 525-2278 · (505) 523-9588 (FAX)
PROJECT #06-146

NOTES:

1. ALL INTERIOR CORNERS ARE 1/2" IRON RODS SET #9761.
2. ALL BOUNDARY INFORMATION MATCHES RECORD.
3. THIS ENTIRE SUBDIVISION IS ZONED PUD; SEE PUD 06-05 FOR DETAILS.
4. SUBDIVIDER RESPONSIBLE FOR UTILITY STUB-OUTS AND FOR PROVIDING ANY AND ALL EASEMENTS NECESSARY TO PROVIDE UTILITY SERVICE TO LOTS CONTAINED HEREIN.
5. TRACTS A, B, C, D, E, F, G AND I ARE FOR THE PURPOSE OF OPEN SPACE, DRAINAGE EASEMENTS, UTILITY EASEMENTS, AND PONDING. ALL TRACTS SHALL BE PRIVATELY MAINTAINED BY HOMEOWNERS ASSOCIATION.
6. TRACT J CONSISTS OF PEGASUS RD., HERMIA CT., HARP CT., AURIGA CT., CYMBELINE CT., LYRA CT. AND GERES CT. TRACT J WILL BE 50' WIDE PERMANENT, PRIVATE ACCESS AND UTILITY EASEMENT PRIVATELY OWNER AND MAINTAINED WITH A GATES COMMUNITY BY THE HOMEOWNER'S ASSOCIATION.
7. CHANGES TO LOT LINES AND SETBACKS MAY BE APPROVED ADMINISTRATIVELY BY STAFF. SEE PUD DOCUMENTS FOR SETBACKS.
8. THIS PARCEL OF LAND IS IN FLOOD ZONE X (AREAS DETERMINED TO BE OUTSIDE THE 500 YEAR FLOOD PLAIN) OF THE FEDERAL EMERGENCY MANAGEMENT AGENCY'S FLOOD INSURANCE RATE MAPS DATED SEPTEMBER 27, 1991. THIS SUBDIVISION LIES WITHIN MAP #35013C0517E.
9. THERE SHALL BE NO ROOF DRAINAGE ALLOWED ON THE ZERO LOT LINE SIDE.
10. (P) THIS SYMBOL REPRESENTS ON LOT PONDING. ALL LOTS WHICH CONTAIN THIS SYMBOL WILL HAVE PONDS THAT WILL COMPLY WITH THE CITY OF LAS CRUCES DESIGN STANDARDS. MAINTENANCE OF ON-LOT PONDS WILL BE RESPONSIBILITY OF THE LOT OWNER.

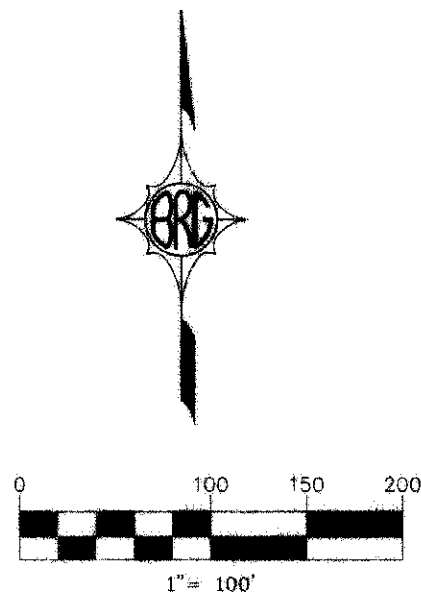
LEGEND

- = 1/2" IRON ROD SET WITH PLASTIC IDENTIFICATION CAP #9761
- = 1/2" IRON ROD FOUND WITH PLASTIC IDENTIFICATION CAP #9761
- = BOUNDARY LINES & CORNER (IRON RODS TO BE SET)
- = DENOTES 12' WIDE UTILITY EASEMENT GRANTED BY THIS PLAT
- (P) = SYMBOL FOR ON-LOT PONDING. SEE NOTE #9



C:\Gerry\DWG\06-146 LOSPUEBLOS 3\dwg\06-146 final plat los puebls alameda.dwg LAYOUT: PRELIMINARY PLAT
STA: S REV: 12.12.2007

C:\Gerry\DWG\06-146
STA'S REV: 12122007



SHEET 4 OF 5

1
SHEET 4 OF 5

CURVE	RADIUS	LENGTH	TANGENT	CHORD	BEARING	DELTA
C1	1485.00'	225.17	112.81	224.95	N14°38'27"E	8°48'23"
C2	25.00'	38.44	24.18	34.76	S33°48'25"E	88°08'21"
C3	662.50'	181.45	91.30	180.89	S28°11'25"E	15°41'34"
C4	577.50'	233.81	118.96	232.31	S24°26'50"E	20°12'25"
C5	840.00'	444.54	227.61	439.37	N20°52'33"W	30°18'19"
C6	586.00'	353.90	183.08	348.04	S23°49'08"E	38°12'52"
C7	840.00'	228.83	114.62	225.63	N31°46'13"W	20°18'26"
C8	587.50'	204.60	103.31	203.60	N32°06'51"W	19°37'08"
C9	802.50'	134.23	67.39	133.95	S35°32'29"E	12°45'54"
C10	802.50'	248.53	125.01	244.81	S17°26'13"E	23°26'39"
C11	797.50'	422.00	216.09	417.14	N20°52'33"W	30°18'19"
C12	600.00'	206.42	104.17	202.47	S26°29'36"E	19°04'33"
C13	800.00'	53.30	26.85	53.29	N87°25'08"E	3°49'03"
C14	800.00'	529.83	274.83	528.01	N88°17'30"E	37°59'58"
C15	800.00'	42.04	21.02	42.03	S71°14'05"E	37°07'39"
C16	800.00'	325.93	162.98	323.66	N81°24'03"W	23°20'35"
C17	800.00'	362.66	184.50	359.56	S73°56'27"W	25°58'26"
C18	800.00'	12.84	6.42	12.84	S80°29'39"W	0°56'11"
C19	400.00'	267.95	136.22	262.97	N79°13'30"E	38°22'54"
C20	400.00'	102.77	51.87	102.49	S74°13'25"E	14°43'16"
C21	400.00'	199.93	102.10	197.66	N81°10'55"W	28°38'17"
C22	400.00'	73.51	36.86	73.41	N89°45'50"E	10°31'47"
C23	400.00'	48.70	24.88	48.67	S81°24'41"E	7°07'10"
C24	842.50'	338.57	172.12	337.27	S17°15'41"E	23°05'15"
C25	557.50'	297.16	152.80	293.65	N20°59'05"W	30°32'22"
C26	600.00'	560.40	302.52	540.25	N08°28'50"W	53°30'51"
C27	400.00'	373.60	201.88	360.17	N08°28'50"W	53°30'51"
C28	200.00'	80.25	30.35	80.02	S08°37'48"W	17°15'38"
C29	200.00'	196.80	100.84	196.08	N08°28'50"W	53°30'51"
C30	200.00'	136.12	71.94	135.39	S02°16'57"E	39°34'05"
C31	200.00'	187.64	101.37	186.84	N08°22'35"W	53°46'21"
C32	200.00'	200.85	105.74	195.89	S30°32'48"W	44°15'38"
C33	555.00'	182.34	92.00	181.52	N32°30'42"W	18°46'27"
C34	502.50'	154.81	78.03	154.20	N33°05'52"W	17°39'08"
C35	795.00'	398.58	204.58	394.91	N02°52'33"W	30°18'19"
C36	20.00'	8.10	3.08	8.08	N28°00'14"E	17°29'18"
C37	575.00'	103.31	51.79	103.17	N02°31'28"E	10°17'38"
C38	575.00'	103.31	51.79	103.17	N07°46'12"W	10°17'38"
C39	575.00'	103.52	51.90	103.38	N18°04'28"W	10°18'54"
C40	575.00'	103.93	52.11	103.79	N28°24'36"W	10°21'22"
C41	575.00'	26.78	13.38	26.78	N34°58'17"W	2°39'58"
C42	50.00'	71.26	43.20	65.38	S45°25'09"E	81°33'36"
C43	50.00'	43.16	23.03	41.83	S20°08'29"W	49°27'38"
C44	50.00'	15.06	7.59	15.00	S53°29'55"W	17°15'14"
C45	50.00'	38.53	20.28	37.59	S84°12'12"W	44°06'18"
C46	20.00'	11.00	5.64	10.86	S20°29'57"E	31°30'38"
C47	625.00'	15.24	7.62	15.24	N35°33'21"W	17°23'46"
C48	625.00'	80.22	40.17	80.17	N31°10'50"W	7°21'15"
C49	625.00'	80.22	40.17	80.17	N23°49'35"W	7°21'15"
C50	625.00'	80.22	40.17	80.17	N16°28'21"W	7°21'15"
C51	625.00'	80.22	40.17	80.17	N09°07'08"W	7°21'15"
C52	625.00'	80.22	40.17	80.17	N01°45'52"W	7°21'15"
C53	625.00'	80.22	40.17	80.17	N05°35'23"E	7°21'15"
C54	625.00'	80.22	40.17	80.23	N12°56'48"E	7°21'35"
C55	20.00'	26.82	15.70	24.70	S38°01'45"E	78°15'22"
C56	867.50'	96.25	48.18	96.20	S22°10'54"E	8°21'26"
C57	867.50'	86.94	45.01	86.90	S16°01'59"E	5°56'25"
C58	867.50'	86.35	44.21	86.31	S10°08'43"E	5°50'06"
C59	532.50'	94.86	47.61	94.84	N18°25'22"W	10°13'04"
C60	532.50'	104.22	52.28	104.06	N29°08'20"W	11°12'52"
C61	532.50'	14.02	7.01	14.02	N35°30'01"W	1°30'30"
C62	50.00'	44.94	24.12	44.45	S80°29'51"E	51°30'11"
C63	50.00'	55.20	30.80	52.44	S03°06'59"E	63°15'32"
C64	50.00'	15.06	7.59	15.00	S37°08'24"W	17°15'14"
C65	50.00'	49.22	28.81	47.25	S73°57'56"W	56°23'51"
C66	20.00'	7.71	3.91	7.67	S25°12'17"E	22°05'57"
C67	582.50'	55.21	27.82	55.19	N33°32'21"W	5°25'49"
C68	582.50'	90.72	45.45	90.83	N28°21'45"W	8°58'24"
C69	582.50'	80.22	40.17	80.22	N17°57'08"W	7°33'48"
C70	582.50'	81.52	40.82	81.45	N08°08'41"W	8°01'55"
C71	817.50'	91.18	45.64	91.13	S15°06'26"E	8°23'25"
C72	817.50'	92.88	46.48	92.81	S21°33'23"E	8°30'29"
C73	817.50'	0.69	0.34	0.69	S24°50'04"E	0°02'53"
C74	825.00'	113.45	56.81	113.36	N77°09'04"E	7°52'44"
C75	825.00'	270.99	136.72	269.77	S89°29'58"E	18°49'11"
C76	28.00'	36.84	22.88	33.60	N77°13'40"W	84°25'58"
C77	25.00'	36.84	22.88	33.60	N18°20'22"E	84°25'58"
C78	20.00'	31.00	19.59	27.99	S89°15'44"E	88°48'28"
C79	780.00'	76.64	38.35	76.61	N63°26'47"E	5°46'41"
C80	840.00'	83.48	41.77	83.44	N63°24'10"E	5°41'38"
C81	645.00'	77.81	38.95	77.77	S38°28'03"E	6°54'44"
C82	845.00'	204.46	103.09	203.60	S14°47'45"E	18°09'43"
C83	20.00'	12.45	6.33	12.45	N61°15'06"W	49°59'41"
C84	50.00'	79.82	51.39	71.68	N32°02'51"W	91°34'34"
C85	825.00'	149.18	74.78	148.97	S74°54'34"E	10°21'37"
C86	20.00'	26.36	15.49	24.49	N72°30'34"E	75°31'21"
C87	20.00'	5.99	3.02	5.97	S08°40'48"W	17°09'39"
C88	575.00'	96.23	48.23	96.12	N12°27'58"E	9°35'21"
C89	625.00'	6.91	3.45	6.91	N16°50'35"E	0°36'00"
C90	697.50'	111.90	56.07	111.78	S37°19'40"E	91°13'31"
C91	20.00'	34.39	23.22	30.31	N23°54'06"E	96°31'26"
C92	20.00'	9.74	4.97	9.64	S00°12'27"E	27°53'44"
C93	582.50'	2.75	1.38	2.75	N05°51'01"W	0°16'15"
C94	817.50'	88.42	44.25	88.38	S08°48'48"E	8°11'50"
C95	532.50'	70.63	35.36	70.57	N08°30'52"W	7°35'57"
C96	867.50'	22.91	11.46	22.91	S06°28'17"E	1°30'47"
C97	20.00'	3.28	1.64	3.28	S04°29'54"W	18°28'03"
C98	20.00'	17.45	9.33	16.90	N61°15'06"W	49°59'41"
C99	50.00'	76.32	47.83	69.13	N29°59'22"W	87°27'35"
C100	775.00'	414.98	212.59	410.04	N88°30'12"E	30°40'45"
C101	225.00'	0.97	0.48	0.97	S12°38'28"E	0°14'49"
C102	225.00'	52.21	26.22	52.10	S05°50'11"E	13°17'46"
C103	175.00'	110.30	57.05	108.48	N05°33'18"W	36°06'44"
C104	175.00'	18.00	9.01	17.99	N26°33'29"W	5°53'38"
C105	50.00'	75.04	46.62	68.19	S42°08'48"E	85°58'23"

		CURVE TABLE				
CURVE	RADIUS	LENGTH	TANGENT	CHORD	BEARING	DELTA
C106	50.00'	35.58	18.58	34.84	S21°17'07"W	40°46'27"
C107	50.00'	21.46	10.90	21.29	S53°57'56"W	24°38'11"
C108	50.00'	42.10	22.39	40.86	N89°37'17"W	48°14'22"
C109	225.00'	60.09	30.22	59.81	N23°58'07"W	18°18'03"
C110	225.00'	90.04	45.63	89.44	N04°51'15"W	22°56'41"
C111	20.00'	3.20	1.60	3.20	S77°37'08"E	74°51'54"
C112	20.00'	28.13	15.31	24.31	S77°37'08"E	74°51'54"
C113	175.00'	79.46	40.43	78.78	N23°14'48"W	28°00'56"
C114	50.00'	61.64	35.42	57.81	S50°56'04"E	70°37'46"
C115	50.00'	40.63	21.51	38.52	S07°29'37"W	46°33'33"
C116	50.00'	42.20	22.45	40.96	S55°07'03"W	48°21'18"
C117	50.00'	41.89	22.08	40.40	N76°52'45"E	47°39'08"
C118	225.00'	27.01	13.52	26.99	N32°48'55"W	6°52'42"
C119	225.00'	76.48	38.60	76.10	N19°38'26"W	19°28'16"
C120	225.00'	76.48	38.60	76.10	N00°10'09"W	19°28'16"
C121	20.00'	5.91	2.97	5.89	N25°43'14"E	16°58'17"
C122	20.00'	26.13	15.31	24.31	S52°25'25"E	74°51'54"
C123	375.00'	108.28	55.03	106.89	N07°47'28"W	16°41'48"
C124	375.00'	108.28	55.03	106.89	N24°29'14"W	16°41'48"
C125	375.00'	22.38	11.19	22.37	N34°32'42"W	3°25'07"
C126	50.00'	55.69	31.13	52.86	S54°20'21"E	63°46'12"
C127	50.00'	64.24	37.42	59.91	S14°22'44"W	73°36'59"
C128	50.00'	15.06	7.59	15.00	S59°48'50"W	17°15'14"
C129	50.00'	51.10	28.03	48.90	N82°16'58"W	58°33'09"
C130	425.00'	18.51	9.26	18.51	N35°00'24"W	2°29'43"
C131	425.00'	75.39	37.60	75.30	N28°40'37"W	10°09'51"
C132	425.00'	75.39	37.60	75.30	N18°30'46"W	10°09'51"
C133	425.00'	75.39	37.60	75.30	N08°20'54"W	10°09'51"
C134	425.00'	75.39	37.60	75.30	N01°48'57"E	10°09'51"
C135	20.00'	26.36	15.49	24.49	S31°58'05"E	75°31'21"
C136	775.00'	367.87	187.47	364.42	S82°06'47"W	27°11'47"
C137	775.00'	114.71	57.46	114.61	S64°16'28"W	8°28'50"
C138	775.00'	196.94	98.00	196.41	N77°00'33"W	14°33'34"
C139	20.00'	18.40	10.54	18.65	N57°17'53"W	55°35'11"
C140	20.00'	16.13	8.53	15.70	S08°30'50"E	48°12'38"
C141	20.00'	17.45	9.33	16.90	S11°15'25"E	49°59'41"
C142	20.00'	17.45	9.33	16.90	N61°15'06"W	49°59'41"
C143	20.00'	12.86	6.66	12.64	S21°46'34"E	36°51'13"
C144	20.00'	28.40	14.74	23.73	N23°39'06"E	72°45'87"
C145	225.00'	65.54	33.00	65.31	S06°08'23"W	16°41'24"
C146	175.00'	63.63	32.17	63.28	S07°05'04"W	20°50'03"
C147	175.00'	15.27	7.64	15.27	N15°00'05"E	5°00'01"
C148	225.00'	42.77	21.48	42.71	N12°03'20"E	10°53'28"
C149	50.00'	69.89	42.02	64.34	N25°27'18"W	80°05'36"
C150	20.00'	5.23	2.63	5.22	S87°28'44"E	14°58'28"
C151	20.00'	26.13	15.31	24.31	N48°35'37"E	74°51'54"
C152	175.00'	83.99	42.82	83.19	S63°36'38"E	27°28'55"
C153	225.00'	87.78	34.15	67.52	S03°37'48"W	17°15'36"
C154	225.00'	87.78	34.15	67.52	S08°37'48"W	17°15'36"
C155	225.00'	30.21	15.13	29.86	N01°24'47"E	7°14'37"
C156	20.00'	26.13	15.31	24.31	S11°31'35"E	11°28'00"
C157	20.00'	4.00	2.01	4.00	S11°31'35"E	11°28'00"
C158	20.00'	17.45	9.33	16.90	N61°15'06"W	49°59'41"
C159	20.00'	17.45	9.33	16.90	S11°15'25"E	49°59'41"
C160	375.00'	108.31	55.06	106.93	N05°54'32"E	16°42'07"
C161	375.00'	76.86	38.54	76.76	N14°03'44"E	10°21'43"
C162	825.00'	274.76	138.66	273.49	S74°29'23"W	19°04'55"
C163	825.00'	274.76	138.66	273.49	N80°24'18"W	18°54'05"
C164	50.00'	58.29	32.34	57.04	N19°39'23"E	66°47'37"
C165	50.00'	58.29	32.34	57.04	N05°17'08"W	66°50'50"
C166	50.00'	13.36	6.94	13.17	N22°37'42"E	14°12'02"
C167	285.00'	50.55	28.87	57.45	S14°12'02"W	11°33'41"
C168	285.00'	50.55	40.55	80.30	S28°05'02"W	16°11'48"
C169	285.00'	61.91	31.08	61.79	S44°24'21"W	12°26'46"
C170	50.00'	14.29	7.19	14.14	S10°52'13"E	12°22'38"
C171	50.00'	63.24	36.84	59.11	S55°17'31"W	62°27'58"
C172	50.00'	30.72	15.86	30.28	N7°59'28"W	53°01'03"
C173	50.00'	50.02	25.99	49.64	N48°30'28"W	24°34'38"
C174	50.00'	40.02	33.49	38.73	S19°07'28"W	67°37'52"
C175	235.00'	87.94	44.44	87.35	S19°07'28"W	67°37'52"
C176	20.00'	32.09	20.68	28.73	S42°54'29"E	91°58'02"
C177	425.00'	142.04	71.99	141.38	N69°36'31"E	19°09'54"
C178	20.00'	17.45	9.33	16.90	N27°40'44"E	49°59'41"
C179	20.00'	17.45	9.33	16.90	S77°46'28"E	49°59'41"
C180	20.00'	55.62	31.92	52.80	N70°48'10"E	83°44'12"
C181	20.00'	1.87	0.94	1.87	S06°54'56"E	52°11'56"
C182	50.00'	20.50	10.26	19.70	N76°11'52"E	59°21'56"
C183	235.00'	93.70	47.48	92.48	S4°58'15"W	22°50'38"
C184	285.00'	20.13	10.07	20.13	S83°05'26"E	18°14'22"
C185	425.00'	251.86	128.75	248.19	S03°50'25"E	33°57'15"
C186	375.00'	48.69	24.38	48.05	S70°34'57"E	72°61'09"
C187	375.00'	203.54	104.35	201.65	N73°56'32"E	31°05'57"
C188	375.00'	96.00	48.26	95.74	N86°10'01"W	14°40'04"
C189	1465.00'	128.83	63.48	126.79	N16°33'30"E	1°31'05"
C190	25.00'	38.43	24.17	34.75	S58°06'56"E	88°03'53"
C191	25.00'	50.00	33.33	46.57	S81°24'41"E	70°10'01"
C192	375.00'	52.88	26.44	52.08	S81°24'41"E	70°10'01"
C193	425.00'	64.92	34.56	63.82	N05°48'50"E	10°14'47"
C194	225.00'	78.11	39.16	76.80	N87°54'47"E	17°50'02"
C195	425.00'	132.41	66.75	131.68	N75°44'18"E	17°50'02"
C196	375.00'	91.43	45.95	91.21	S73°50'53"E	17°58'13"