

1717 Louisiana Blvd. NE  
Albuquerque, NM 87110

**FOR LEASE**

## Louisiana Park Office Building

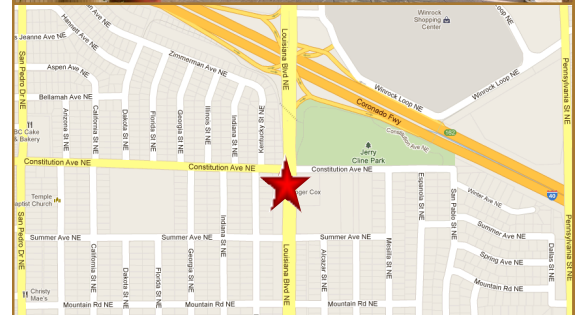


### Available Space:

**Suite 101 - 770± RSF, \$16.00/SF/YR**  
**Full Service**

**Zoning:** MX-M, Moderate Intensity

**Comments:** Conveniently Located in the Uptown Vicinity  
Easy Access to I-40  
Great Views/Updated Common Areas  
Fiber Connection Available



The information contained is believed reliable. While we do not doubt the accuracy, we have not verified it and make no guarantee, warranty or representation about it. It is your responsibility to independently confirm its accuracy and completeness. Any projection, opinion, assumption or estimated uses are for example only and do not represent the current or future performance of the property. The value of this transaction to you depends on many factors which should be evaluated by your tax, financial, and legal counsel. You and your counsel should conduct a careful independent investigation of the property to determine that it is suitable to your needs. If square footage is a consideration, parties are advised to measure the property.

**(505) 268-2800**

**WWW.ROGER-COX.COM**

1717 Louisiana Blvd. NE, Suite 111  
Albuquerque, NM 87110



**ROGER COX**  
AND ASSOCIATES  
PROPERTY MANAGEMENT, LLC

Brian Anderson, CCIM  
M (505) 379-6030  
brian@roger-cox.com

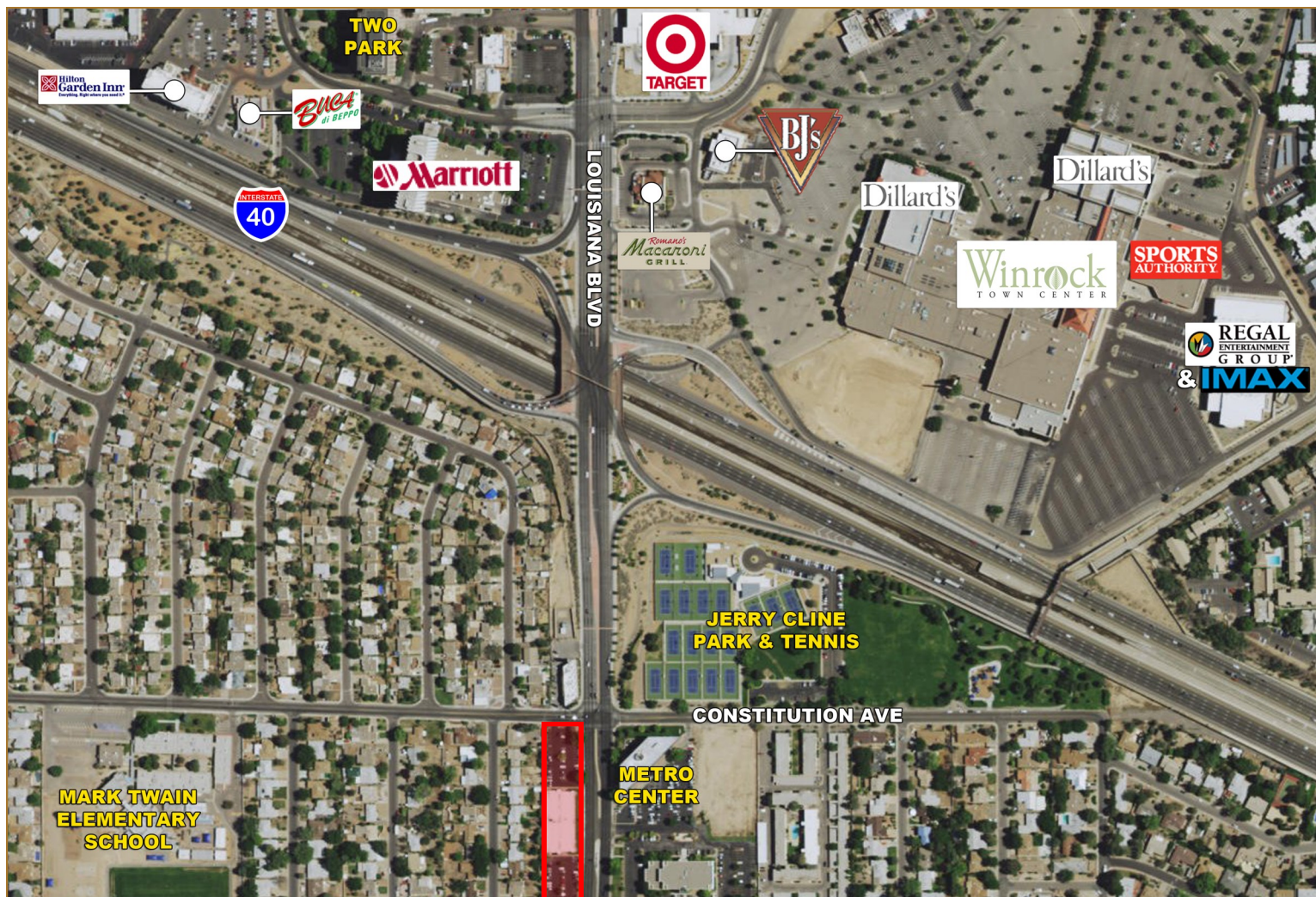




1717 Louisiana Blvd. NE  
Albuquerque, NM 87110

FOR LEASE

## Aerial

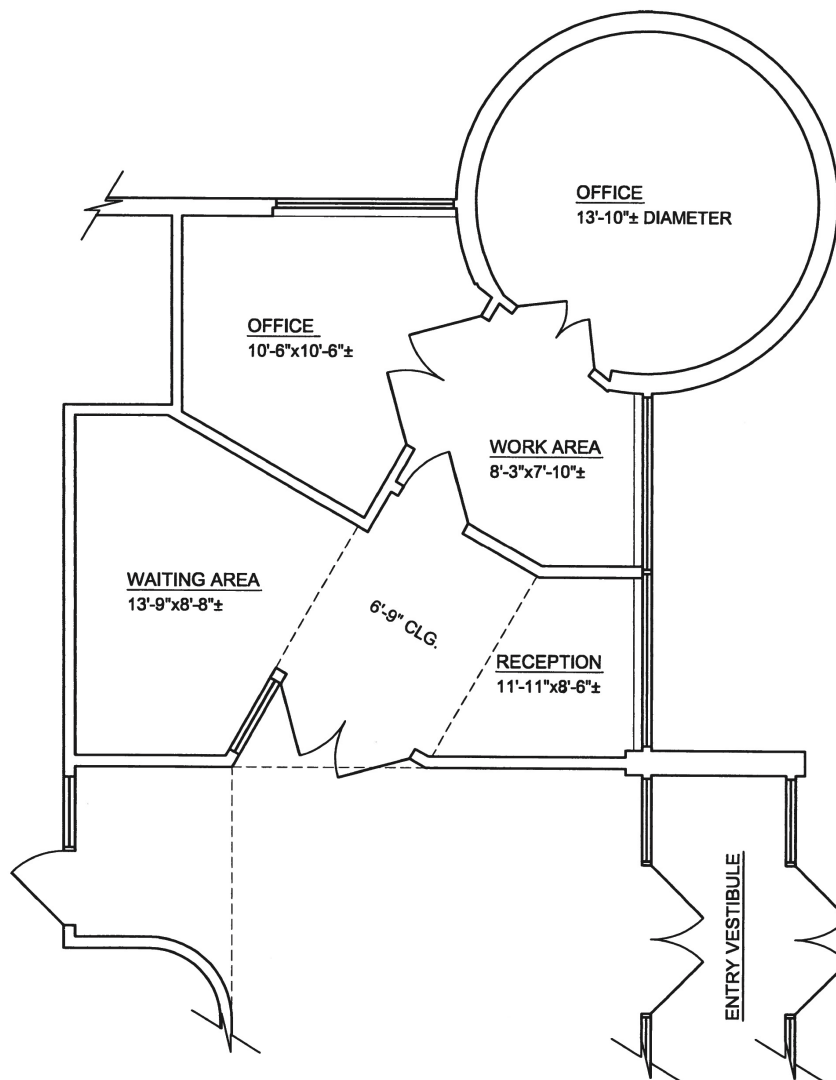




1717 Louisiana Blvd. NE  
Albuquerque, NM 87110

**FOR LEASE**

**Suite 101 - Floor Plan**  
**770± RSF**



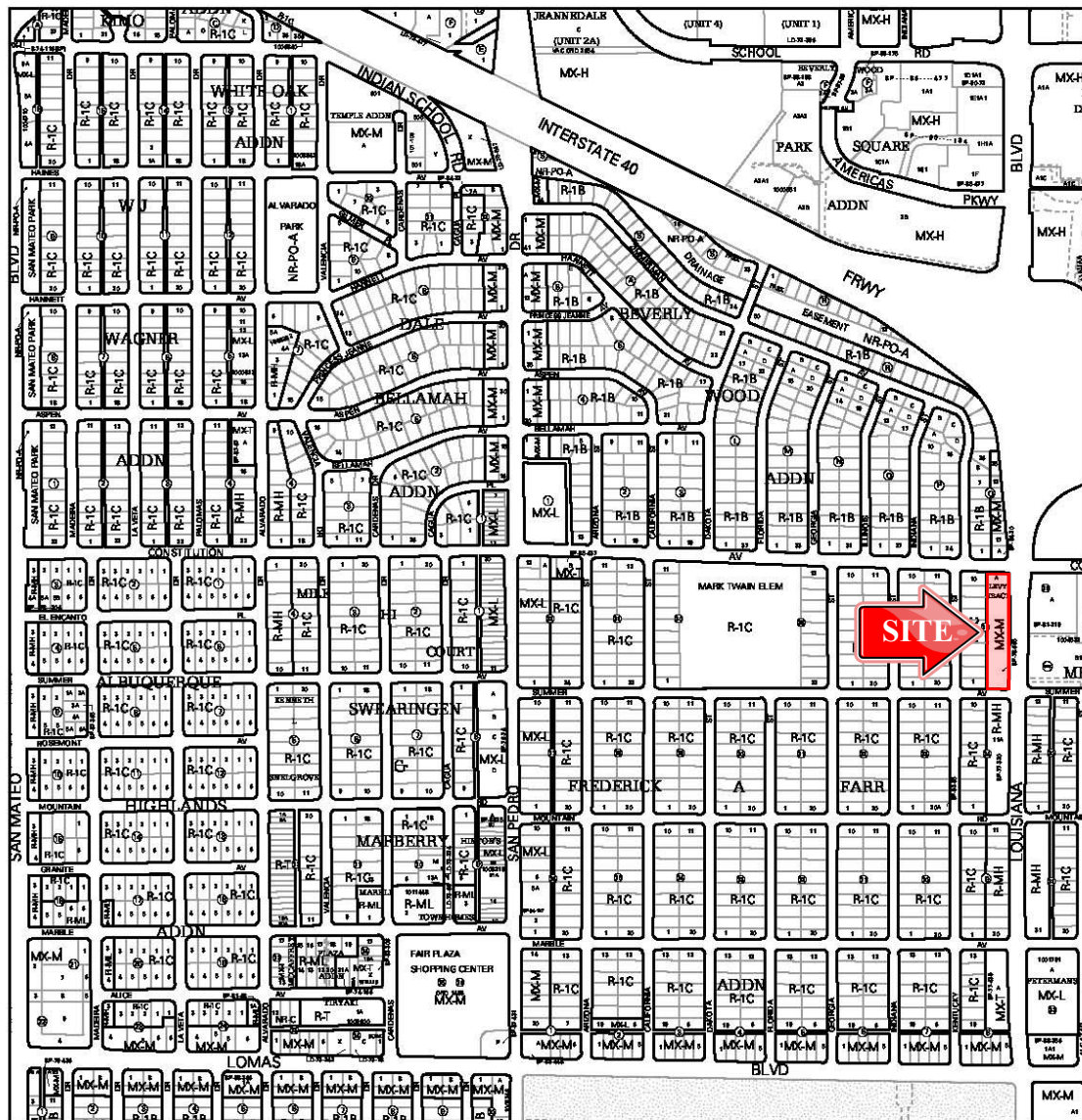
LOUISIANA PARK, SUITE - 101



1717 Louisiana Blvd. NE  
Albuquerque, NM 87110

# FOR LEASE

# Zone Atlas



For more details about the Integrated Development Ordinance visit: <http://www.cabq.gov/planning/codes-policies-regulations/integrated-development-ordinance>

