

FOR LEASE



Office or Dental/Medical Space For Lease Between Louisiana and San Mateo

6208 Montgomery Blvd NE, Suite C, Albuquerque, NM 87110



LOCATION

- Frontage on Montgomery Between Louisiana and San Mateo

AVAILABLE

- Suite C
- 1,107± SF
- Zoning: MX-L
- .68± Acres

LEASE INFORMATION

- Lease Rate: \$16.00/SF
- \$1,476.00/Month
- Lease Type: Modified Gross
- Tenant Pays: Gas, Electric, Janitorial

FEATURES

- Built-out for Office or Dental/Medical
- Well Maintained and Managed
- 5/1,000 Parking Ratio
- Monument Signage on Montgomery
- Close Proximity to Lovelace Women's Hospital and Other Medical Complexes

ED ANLIAN CCIM
Mobile: (505) 250-9661
ed@jcrenm.com
NM LICENSE # 14869

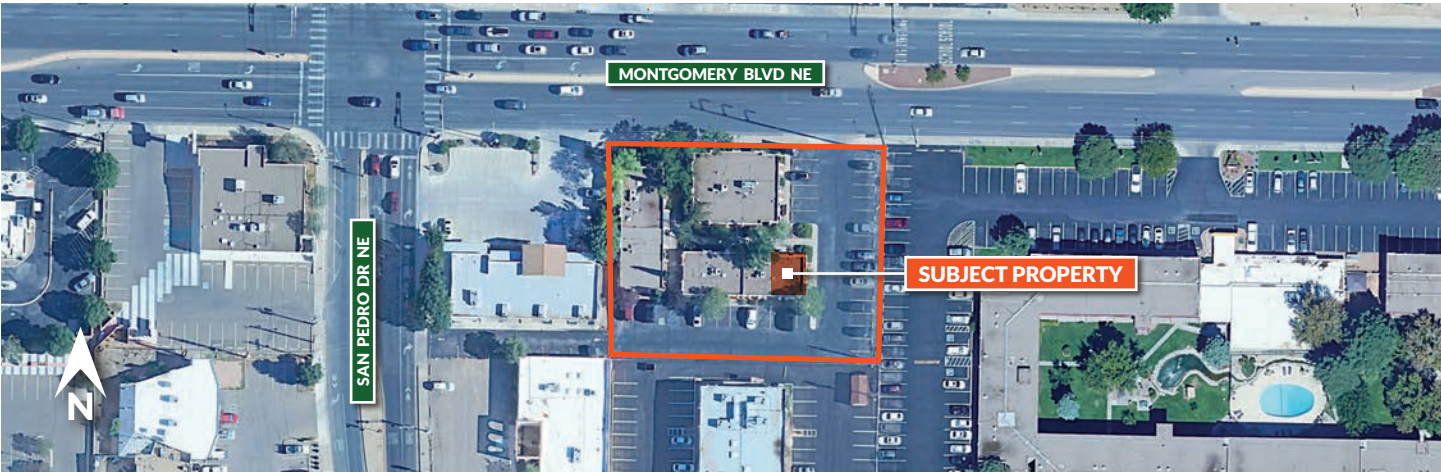
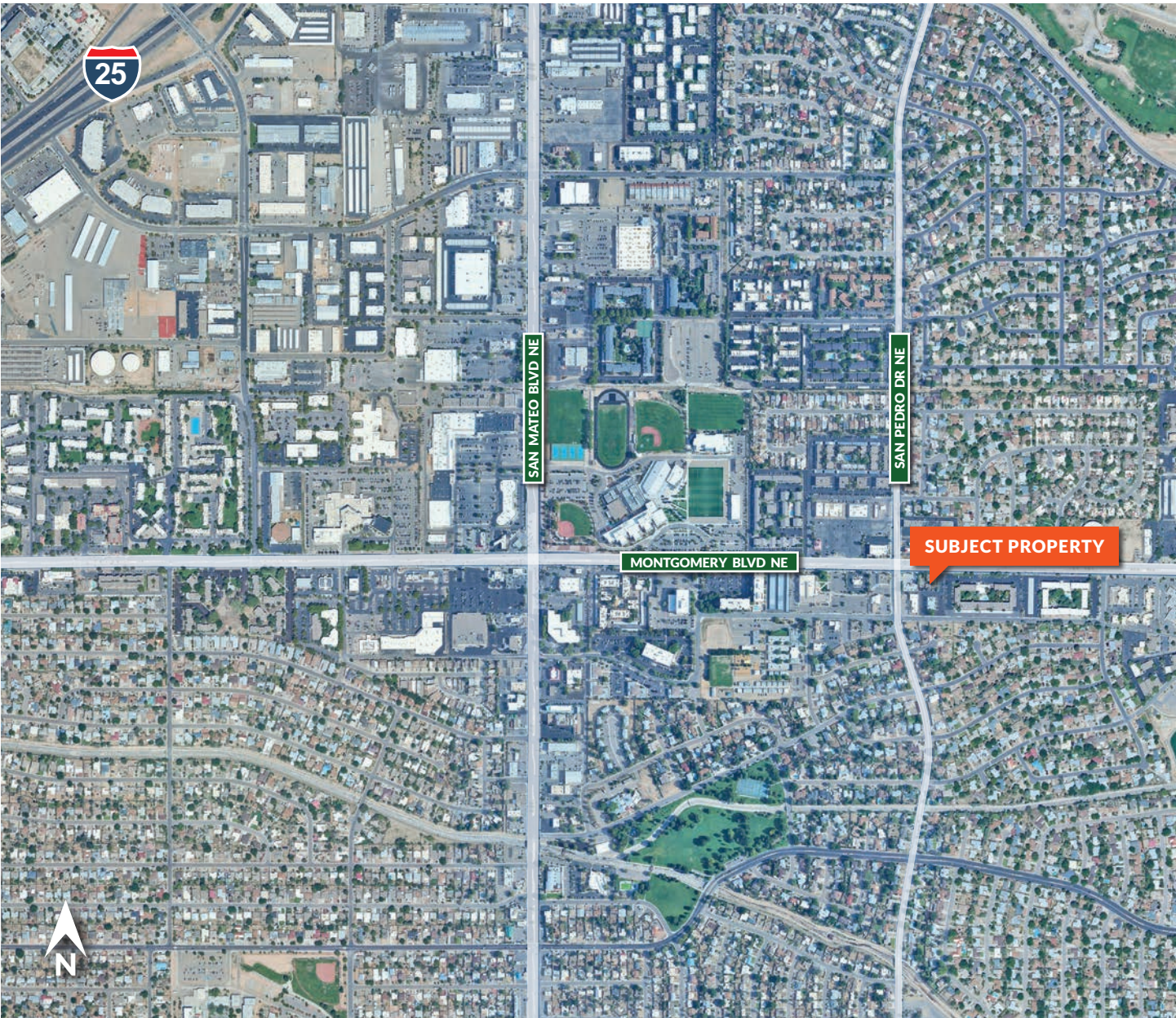
jcrenm.com

The information contained herein is believed to be reliable, however Johnson Commercial Real Estate LC makes no warranty, representation or guarantee as to its accuracy. Interested parties should conduct its own investigations to determine the suitability of its intended use for the property.

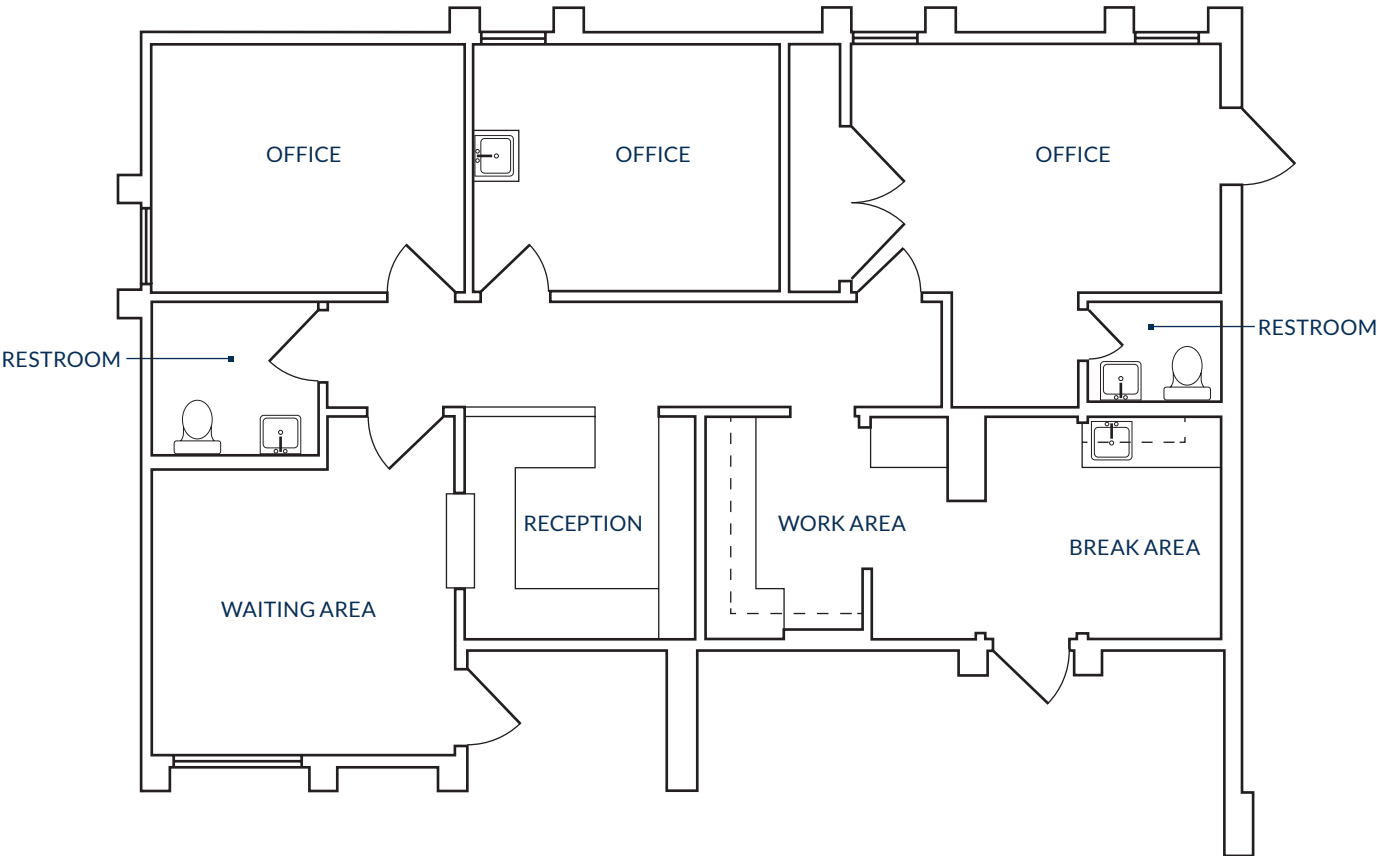
4811 Hardware Dr NE, Suite C-5
Albuquerque, NM 87109 | 505-831-3333

 **JOHNSON**
Commercial Real Estate

AERIAL MAP



FLOOR PLAN



INTERIOR PHOTOS

