



2945 Rodeo Park Drive East  
SANTA FE, NM 87505

FOR LEASE

**PRICE PSF:**  
\$25.50 PSF

**SPACE AVAILABLE:**  
Suite 6B  
+/- 1,254 SF\*

**LOT SIZE:**  
+/- 1.5 Acres

**SUBMARKET:**  
Santa Fe

\*Includes common area



Neda Talebreza

Associate Broker / License # 50893

505 681 3870

ntalebreza@santaferealestate.com

530 S. GUADALUPE STREET, SANTA FE, NM 87501  
505 982 9836 / SANTAFEREALSTATE.COM

Unit available in Santa Fe's top medical and office park

We obtained the information above from sources we believe to be reliable. However, we have not verified its accuracy and make no guarantee, warranty or representation about it. It is submitted subject to the possibility of errors, omissions, change of price, rental or other conditions, prior sale, lease or financing, or withdrawal without notice. We include projections, opinions, assumptions or estimates for example only, and they may not represent current or future performance of the property. You and your tax and legal advisors should conduct your own investigation of the property and transaction.

**BARKER REALTY**  
COMMERCIAL





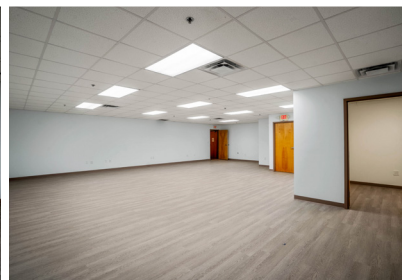
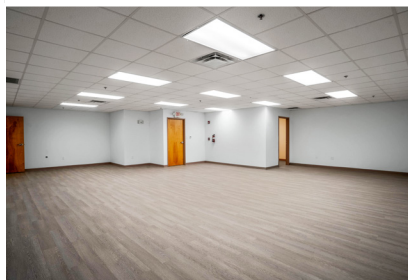
# 2945 Rodeo Park Drive East

SANTA FE, NM 87505

FOR LEASE

## FEATURES

- Ideal for medical and professional users
- Located <5 minutes I-25 St. Francis exit
- Dedicated parking and ample street parking
- Generously sized open workspace and private office
- In close proximity to prominent medical, retail and office users
- Close to New Mexico Rail Runner and Santa Fe Trails bus system
- Private entrance and lobby to suites



Neda Talebreza

Associate Broker / License # 50893

505 681 3870

[ntalebreza@santaferealestate.com](mailto:ntalebreza@santaferealestate.com)

## Unit available in Santa Fe's top medical and office park

We obtained the information above from sources we believe to be reliable. However, we have not verified its accuracy and make no guarantee, warranty or representation about it. It is submitted subject to the possibility of errors, omissions, change of price, rental or other conditions, prior sale, lease or financing, or withdrawal without notice. We include projections, opinions, assumptions or estimates for example only, and they may not represent current or future performance of the property. You and your tax and legal advisors should conduct your own investigation of the property and transaction.

**BARKER REALTY**  
COMMERCIAL

530 S. GUADALUPE STREET, SANTA FE, NM 87501  
505 982 9836 / [SANTAFEREALSTATE.COM](http://SANTAFEREALSTATE.COM)



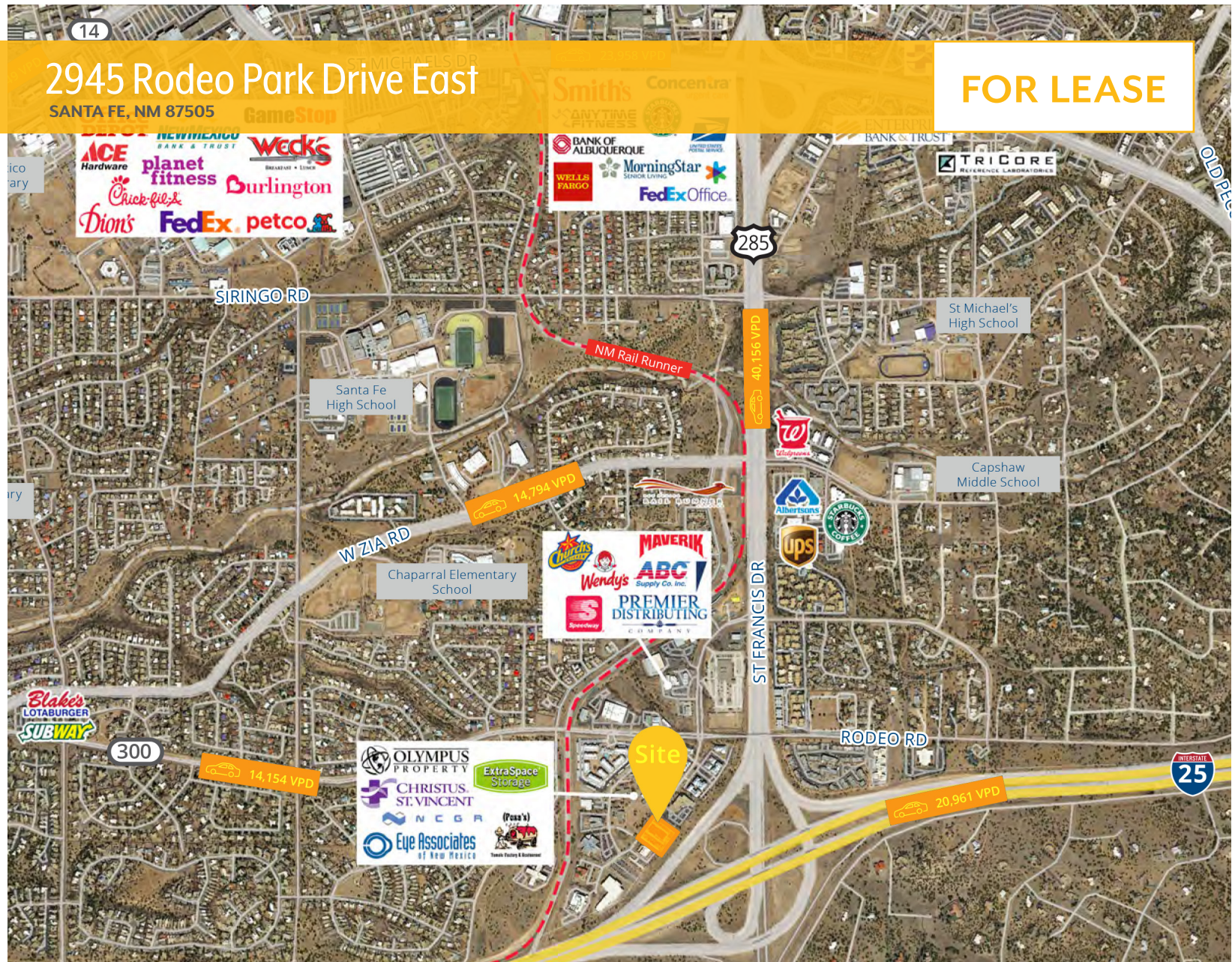


# 2945 Rodeo Park Drive East

SANTA FE, NM 87505

FOR LEASE

AERIAL VIEW



Neda Talebreza

Associate Broker / License # 50893

505 681 3870

ntalebreza@santaferealestate.com

530 S. GUADALUPE STREET, SANTA FE, NM 87501  
505 982 9836 / SANTAFEREALSTATE.COM

## Unit available in Santa Fe's top medical and office park

We obtained the information above from sources we believe to be reliable. However, we have not verified its accuracy and make no guarantee, warranty or representation about it. It is submitted subject to the possibility of errors, omissions, change of price, rental or other conditions, prior sale, lease or financing, or withdrawal without notice. We include projections, opinions, assumptions or estimates for example only, and they may not represent current or future performance of the property. You and your tax and legal advisors should conduct your own investigation of the property and transaction.

**BARKER REALTY**  
COMMERCIAL





2945 Rodeo Park Drive East  
SANTA FE, NM 87505

FOR LEASE

#### NEARBY AMENITIES



Neda Talebreza

Associate Broker / License # 50893

505 681 3870

ntalebreza@santaferealestate.com

530 S. GUADALUPE STREET, SANTA FE, NM 87501  
505 982 9836 / SANTAFEREALSTATE.COM

Unit available in Santa Fe's top medical and office park

We obtained the information above from sources we believe to be reliable. However, we have not verified its accuracy and make no guarantee, warranty or representation about it. It is submitted subject to the possibility of errors, omissions, change of price, rental or other conditions, prior sale, lease or financing, or withdrawal without notice. We include projections, opinions, assumptions or estimates for example only, and they may not represent current or future performance of the property. You and your tax and legal advisors should conduct your own investigation of the property and transaction.

**BARKER REALTY**  
COMMERCIAL

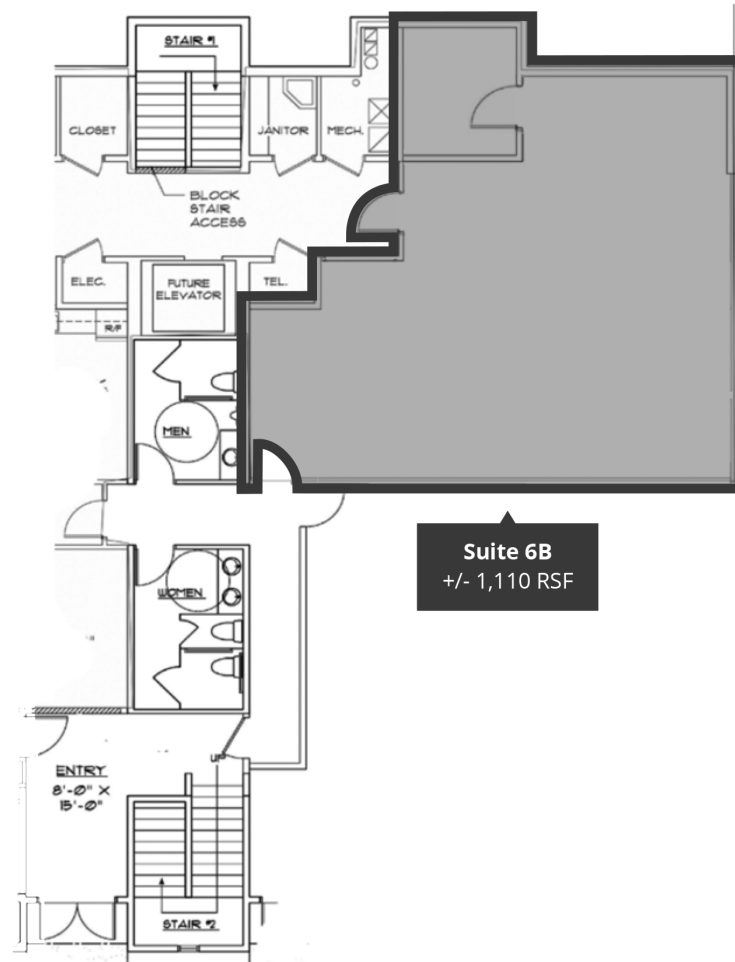


# 2945 Rodeo Park Drive East

SANTA FE, NM 87505

FOR LEASE

## FLOORPLAN



Suite 6B  
+/- 1,110 RSF

Neda Talebreza

Associate Broker / License # 50893

505 681 3870

ntalebreza@santaferealestate.com

530 S. GUADALUPE STREET, SANTA FE, NM 87501  
505 982 9836 / SANTAFEREALSTATE.COM

## Unit available in Santa Fe's top medical and office park

We obtained the information above from sources we believe to be reliable. However, we have not verified its accuracy and make no guarantee, warranty or representation about it. It is submitted subject to the possibility of errors, omissions, change of price, rental or other conditions, prior sale, lease or financing, or withdrawal without notice. We include projections, opinions, assumptions or estimates for example only, and they may not represent current or future performance of the property. You and your tax and legal advisors should conduct your own investigation of the property and transaction.

**BARKER REALTY**  
COMMERCIAL