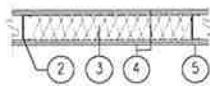


Design No. U465  
September 12, 2003  
Nonbearing Wall Railing - 1 HR



1. FLOOR AND CEILING RUNNERS - (NOT SHOWN) - CHANNEL SHAPED RUNNERS, 3-5/8 IN. WIDE (MIN), 1-1/4 IN. LEGS, FORMED FROM MIN NO. 25 MSG (MIN NO. 20 MSG WHEN ITEM 4C IS USED) GALV STEEL, ATTACHED TO FLOOR AND CEILING WITH FASTENERS SPACED 16 IN. OC MAX.  
2. STEEL STUDS - CHANNEL SHAPED, 3-5/8 IN. WIDE (MIN OR AS INDICATED ELSEWHERE) 1-1/4 IN. LEGS, 3/8 IN.  
FOLDED BACK RETURNS, FORMED FROM MIN NO. 25 MSG (MIN NO. 20 MSG WHEN ITEM 4C IS USED) GALV STEEL SPACED 24 IN. OC MAX.  
3. BATTS AND BLANKETS\* - (OPTIONAL) - MINERAL WOOL OR GLASS FIBER BATTS PARTIALLY OR COMPLETELY FILLING STUD CAVITY.  
SEE BATTS AND BLANKETS (B2J2) CATEGORY FOR NAMES OF CLASSIFIED COMPANIES  
3A. FIBER, SPRAYED\* - AS AN ALTERNATE TO BATTS AND BLANKETS (ITEM 3) - SPRAY APPLIED CELLULOSE INSULATION MATERIAL. THE FIBER IS APPLIED WITH WATER TO COMPLETELY FILL THE ENCLOSED CAVITY IN ACCORDANCE WITH THE APPLICATION INSTRUCTIONS SUPPLIED WITH THE PRODUCT. NOMINAL DRY DENSITY OF 3.0 LB/FT3.  
U S GREENFIBER L L C - COCOON STABILIZED CELLULOSE INSULATION.  
3B. FIBER, SPRAYED\* - AS AN ALTERNATE TO BATTS AND BLANKETS (ITEM 3) AND ITEM 3A - SPRAY APPLIED CELLULOSE INSULATION MATERIAL. THE FIBER IS APPLIED WITH WATER TO INTERIOR SURFACES IN ACCORDANCE WITH THE APPLICATION INSTRUCTIONS SUPPLIED WITH THE PRODUCT. APPLIED TO COMPLETELY FILL THE ENCLOSED CAVITY. MINIMUM DRY DENSITY OF 4.3 POUNDS PER CUBIC FT.  
NU-WOOL CO INC - CELLULOSE INSULATION

4. GYPSUM BOARD\* - 5/8 IN. THICK, 4 FT WIDE, ATTACHED TO STEEL STUDS AND FLOOR AND CEILING TRACK WITH 1 IN. LONG, TYPE S STEEL SCREWS SPACED 8 IN. OC ALONG EDGES OF BOARD AND 12 IN. OC IN THE FIELD OF THE BOARD. JOINTS ORIENTED VERTICALLY AND STAGGERED ON OPPOSITE SIDES OF THE ASSEMBLY. WHEN ATTACHED TO ITEM 6 (RESILIENT CHANNELS) OR 6A (FURRING CHANNELS), WALLBOARD IS SCREW ATTACHED TO FURRING CHANNELS WITH 1 IN. LONG, TYPE S STEEL SCREWS SPACED 12 IN. OC.  
AMERICAN GYPSUM CO - TYPES AG-C, AGX-C.  
BELUNG NEW BUILDING MATERIALS CO LTD - TYPE DBX-1  
BPG AMERICA INC - TYPES I, EGRG, PROROC TYPE X, PROROC TYPE C.  
BPG CANADA INC - PROROC TYPE C.  
CANADIAN GYPSUM COMPANY - TYPES AR, C, IP-AR, IP-X2, IPC-AR, SCX, SHX, WRC OR WRX  
GEORGIA-PACIFIC CORP. SUB OF GEORGIA-PACIFIC CORP - TYPES S, 9, C, DAP, DD, DA, DGG, DS, GPFSB.  
LAFARGE NORTH AMERICA INC - TYPES LGFCZ, LGFCZA, LGFCB, LGFCBA, LGFC-C, LGFC-C/A.  
NATIONAL GYPSUM CO - TYPES FSK-C, FSK-G, FSW-C, FSW-G, FSW  
PABCO GYPSUM, DIV OF PACIFIC COAST BUILDING PRODUCTS INC - TYPE PG-C OR PG-9

SIAM GYPSUM INDUSTRY (SARABURI) CO LTD - TYPE EX-1  
STANDARD GYPSUM L L C - TYPE SG-C.  
TEMPLE-INLAND FOREST PRODUCTS CORP - TYPE TG-C.  
UNITED STATES GYPSUM CO - TYPE AR, C, FRX-G, IP-AR, IP-X2, IPC-AR, SCX, SHX, WRC OR WRX  
USG MEXICO S A DE C V - TYPE AR, C, IP-AR, IP-X2, IPC-AR, SCX, SHX, WRC OR WRX  
BPG CANADA INC - TYPE WESTROC FI-ROK OR ABUSE-RESISTANT.  
4A. GYPSUM BOARD\* - (AS ALTERNATE TO ITEM 4) - NOM 5/8 IN. THICK GYPSUM PANELS WITH BEVELED, SQUARE OR TAPERED EDGES, APPLIED VERTICALLY OR HORIZONTALLY. VERTICAL JOINTS CENTERED OVER STUDS AND STAGGERED ONE STUD CAVITY ON OPPOSITE SIDES OF STUDS. HORIZONTAL EDGE JOINTS AND HORIZONTAL BUTT JOINTS ON OPPOSITE SIDES OF STUDS NEED NOT BE STAGGERED OR BACKED. PANELS ATTACHED TO STEEL STUDS AND FLOOR RUNNER WITH 1 IN. LONG TYPE S STEEL SCREWS SPACED 8 IN. OC WHEN APPLIED HORIZONTALLY, OR 8 IN. OC ALONG VERTICAL AND BOTTOM EDGES AND 12 IN. OC IN THE FIELD WHEN PANELS ARE APPLIED VERTICALLY.  
CANADIAN GYPSUM COMPANY - TYPES AR, C, IP-AR, IP-X2, IPC-AR, SCX, SHX, WRC OR WRX  
UNITED STATES GYPSUM CO - 1 YPE AR, C, FRX-G, IP-AR, IP-X2, IPC-AR, SCX, SHX, WRC OR WRX  
USG MEXICO S A DE C V - TYPE AR, C, IP-AR, IP-X2, IPC-AR, SCX, SHX, WRC OR WRX

4B. GYPSUM BOARD\* - (AS AN ALTERNATE TO ITEMS 4 OR 4A) - NOM 3/4 IN. THICK, 4 FT WIDE, INSTALLED AS DESCRIBED IN ITEM 4A WITH SCREW LENGTH INCREASED TO 1-1/4 IN.  
CANADIAN GYPSUM COMPANY - TYPES AR, IP-AR  
UNITED STATES GYPSUM CO - TYPES AR, IP-AR  
USG MEXICO S A DE C V - TYPES AR, IP-AR.  
5. JOINT TAPE AND COMPOUND - VINYL DRY OR PREMIXED JOINT COMPOUND, APPLIED IN TWO COATS TO JOINTS AND SCREW HEADS; PAPER TAPE, 2 IN. WIDE, EMBEDDED IN FIRST LAYER OF COMPOUND OVER ALL JOINTS. AS AN ALTERNATE, NOMINAL 3/32 IN. THICK GYPSUM VENEER PLASTER MAY BE APPLIED TO THE ENTIRE SURFACE OF CLASSIFIED VENEER BASEBOARD. JOINTS REINFORCED.  
6. RESILIENT CHANNEL - (OPTIONAL-NOT SHOWN) - 25 MSG GALV STEEL RESILIENT CHANNELS SPACED VERTICALLY MAX 24 IN. OC, FLANGE PORTION ATTACHED TO EACH INTERSECTING STUD WITH 1/2 IN. LONG TYPE S-12 PANHEAD STEEL SCREWS. NOT FOR USE WITH TYPE FRX GYPSUM PANELS.  
6A. STEEL FRAMING MEMBERS (NOT SHOWN)\* - AS AN ALTERNATE TO ITEM 3, FURRING

REV	DATE	BY	REVISION
1			
2			
3			
4			
5			

**MODULUS ARCHITECTS**  
100 SUN AVENUE NE SUITE 305  
ALBUQUERQUE, NEW MEXICO 87109  
PHONE (505) 338-1499 FAX (505) 338-1498



PROJECT TITLE 3875 CERRILLOS DRIVE SANTA FE, NEW MEXICO 87508	DRAWN BY: JOB NO. Katy Lour	SHEET TITLE FLOOR PLAN
---	-----------------------------------	---------------------------

DATE 10.04.2017	SHEET A1
SCALE AS NOTED	