

PLAT OF SURVEY

LOT 1, MBKS SUBDIVISION
PLAT FILED DECEMBER 28, 2017, IN
PLAT BOOK 24, PAGE 282, IN THE
DONA ANA COUNTY RECORDS
CITY OF LAS CRUCES
DONA ANA COUNTY
NEW MEXICO

INSTRUMENT OF RECORD:	
FILED:	
INSTRUMENT #9317524	
OF THE DONA ANA COUNTY RECORDS	
DRAWN BY:	S. Peale
FIELD BY:	E.R., c.s.
JOB NO.:	18-01-0007-1
DATE:	January 4, 2018

NOTES:

THE BASIS OF BEARING IS THE SOUTH BOUNDARY.
ALL ELEMENTS SHOWN HEREON ARE PER THE FILED INSTRUMENT/PLAT
AS NOTED HEREON.
BEARINGS AND DISTANCES MATCH THAT OF RECORD. UNLESS
OTHERWISE NOTED.
1/2" IRON RODS WITH YELLOW PLASTIC CAP LABELED WMS 2433 SET AT PROPERTY
CORNERS OR AS NOTED HEREON.

PROPERTY IS IN AN "X" DESIGNATED ZONE;
AS SHOWN ON THE FLOOD INSURANCE RATE MAP
COMMUNITY PANEL NO. 3503C1082 G
EFFECTIVE JULY 6, 2016



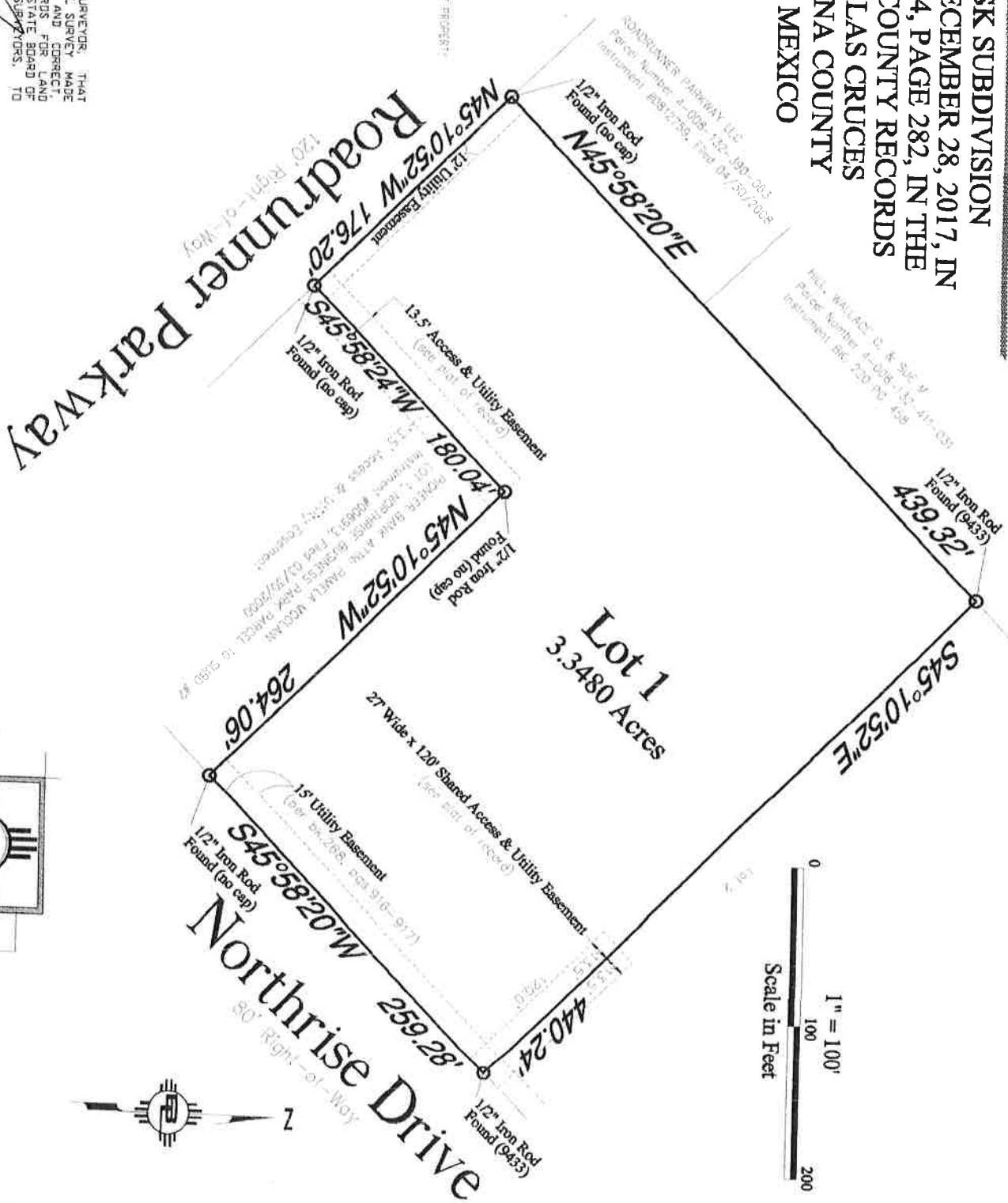
SURVEYOR'S CERTIFICATE

THIS IS TO CERTIFY THAT I AM A REGISTERED LAND SURVEYOR, THAT
THIS PLAT WAS PREPARED FROM FIELD NOTES OF AN ACTUAL SURVEY MADE
BY ME OR UNDER MY DIRECTION AND THAT IT IS TRUE AND CORRECT,
MEETING THE MINIMUM REQUIREMENTS OF THE STANDARDS FOR LAND
SURVEYS IN NEW MEXICO AS ADOPTED BY THE NEW MEXICO STATE BOARD OF
REGISTRATION FOR PROFESSIONAL ENGINEERS AND LAND SURVEYORS, TO
THE BEST OF MY KNOWLEDGE AND BELIEF.

January 4, 2018

STATE OF NEW MEXICO

2990 N. MAIN STREET, STE. 3C LAS CRUCES, NEW MEXICO 88001



THIS IS A BOUNDARY SURVEY PLAT
OF AN EXISTING TRACT OR TRACTS
OF LAND. IT IS NOT A LAND
DIVISION OR SUBDIVISION AS
DEFINED IN THE NEW MEXICO
SUBDIVISION ACT.

E.R. LAND
ENGINEERS AND SURVEYORS LLC.
2990 N. MAIN STREET, STE. 3C
LAS CRUCES, NEW MEXICO 88001
Phone: (575) 522-1443
Text: (575) 522-9958