



Downtown Industrial Space

FOR SUBLEASE

1401 12th St NW

Albuquerque, NM 87104



The information contained herein is believed to be reliable, however Johnson Commercial Real Estate LC makes no warranty, representation or guarantee as to its accuracy. Interested parties should conduct its own investigations to determine the suitability of its intended use for the property.

LOCATION

- Close Proximity to I-40, I-25, and the Big I Interchange
- Downtown Sub-Market

AVAILABLE

- 18,000± SF
- 0.58± Acres

SUBLEASE RATE

- \$10.00/SF/YR NNN

FEATURES

- Two (2) Dock High Doors (7'x8')
- One (1) Drive-In Door (8'x10')
- 12'± Ceiling Height
- Zoned NR-BP (Non-Residential, Business Park)
- Improvements In 2024 Include:
 - Roof
 - Stucco
 - HVAC System
- 17± Parking Spaces
- Lease Expires December 31, 2029

CONTACT

Mark Friedman, CCIM
 NM Lic. 35421
 Cell: (505) 250-5796
 mark@jcrenm.com

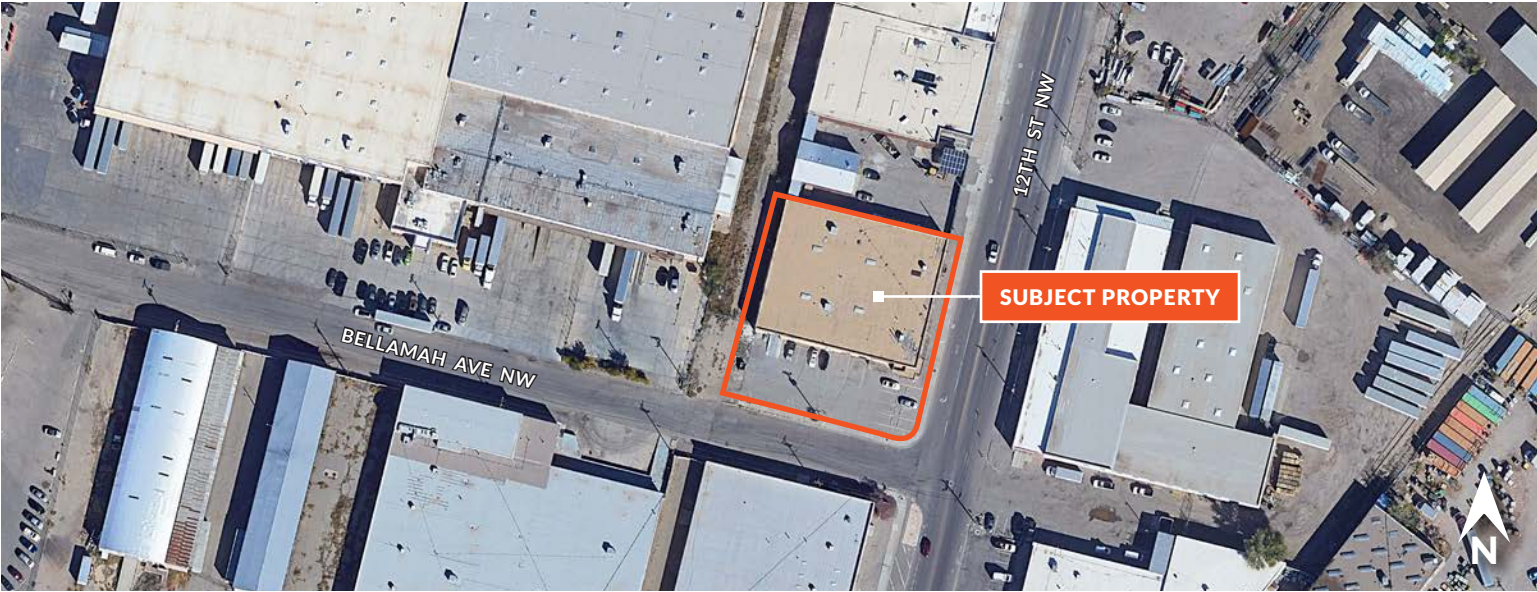
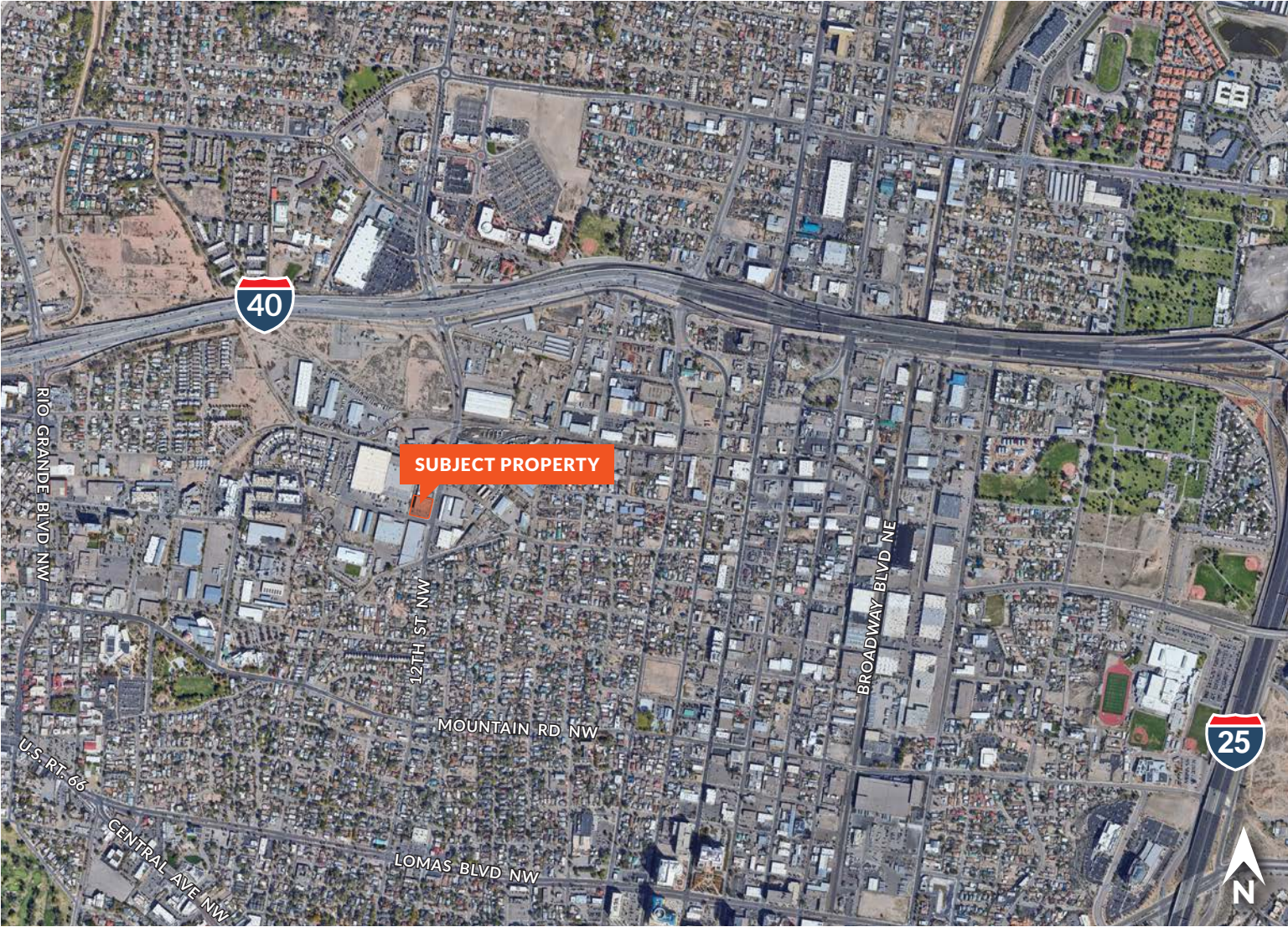
Derek Mitchell
 NM Lic. 48551
 Cell: (505) 353-2055
 derek@jcrenm.com

 **JOHNSON**
 Commercial Real Estate
 (505) 831-3333 ■ jcrenm.com

4811 Hardware Dr NW, Suite C-5, Albuquerque, NM 87109

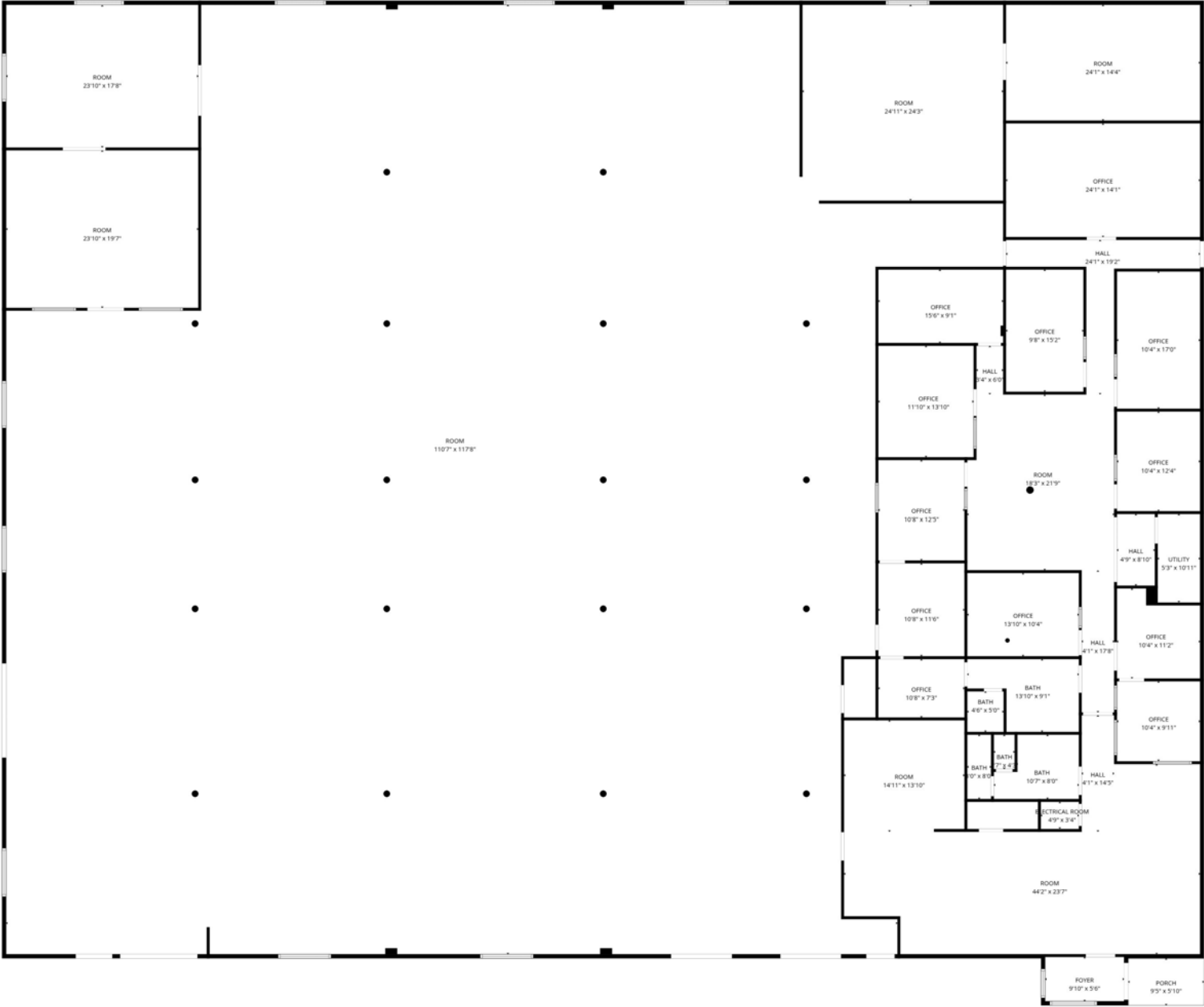


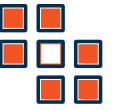
Aerial Map





Floor Plan





Property Photos

