



**SYCAMORE**  
ASSOCIATES LLC

## OFFICE/WAREHOUSE FOR LEASE

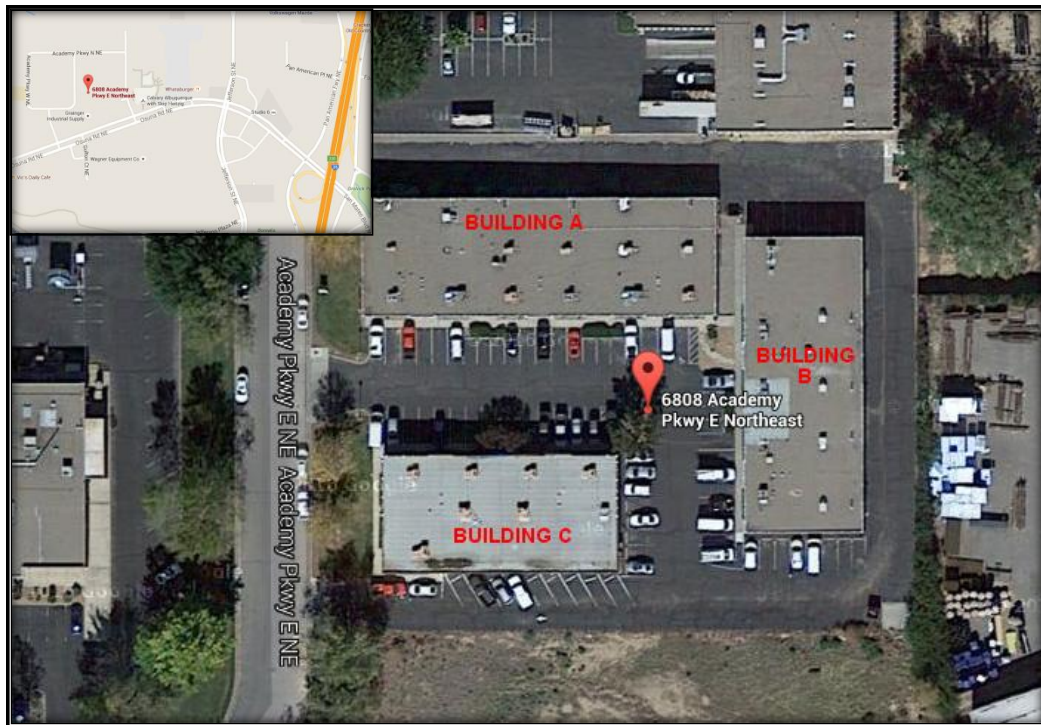


6808 Academy Parkway East B4

## OFFICE/WAREHOUSE FOR LEASE

**Available:** FOR LEASE  
**LEASE:** \$2,000/Mo  
**Modified Gross:** \$12.45/SF  
**Zoning:** NR-LM  
**Total SQ Ft:** 1,928 SF  
**Office SQ Ft:** 400 SF  
**Warehouse SQ Ft:** 1,528 SF

- 1 Private Office
- Refrigerated A/C (Office)
- Reception Area
- (1) 10'x10'8" Drive-In Door
- 3 Phase Power



**Mike Leach**

tel: 505.345.5075

cell: 505-975-3068

[mdl@sycamore-associates.com](mailto:mdl@sycamore-associates.com)



## Contact Agents

**Greg Leach**

tel: 505.345.5075

cell: 505-238-6481

[greg.leach@sycamore-associates.com](mailto:greg.leach@sycamore-associates.com)



WWW • SYCAMORE - ASSOCIATES • COM

License #: 7070

License # 20093

P O Box 90608

Albuquerque

NM

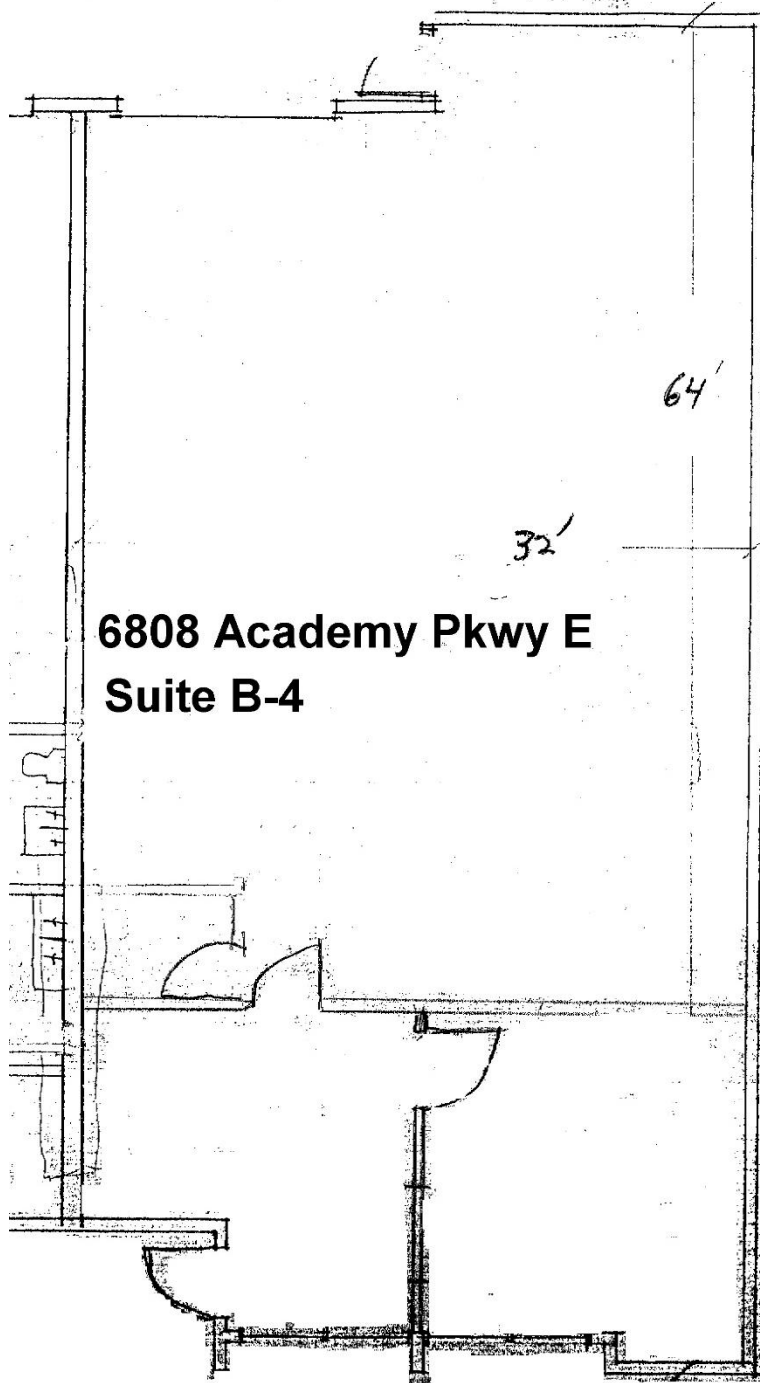
87199

THIS STATEMENT WITH THE INFORMATION IT CONTAINS IS GIVEN WITH THE UNDERSTANDING THAT ALL NEGOTIATIONS RELATING TO THE PURCHASE, RENTING OR LEASING OF THE PROPERTY DESCRIBED ABOVE SHALL BE CONDUCTED THROUGH THIS OFFICE. ALL INFORMATION FURNISHED REGARDING PROPERTY FOR SALE RENTAL OR FINANCING IS FROM SOURCES DEEMED IN OUR OPINION TO BE RELIABLE BUT NO REPRESENTATION IS MADE AS TO THE ACCURACY THEREOF AND IS SUBMITTED SUBJECT TO ERRORS, OMISSIONS, CHANGE OF PRICE, RENTAL OR OTHER CONDITIONS, PRIOR SALE, LEASE OR FINANCING OR WITHDRAWAL WITHOUT NOTICE. Rev. 7/17/25



**SYCAMORE**  
ASSOCIATES LLC

## FLOOR PLAN



WWW • SYCAMORE-ASSOCIATES • COM

P O B o x 9 0 6 0 8      A l b u q u e r q u e      N M      8 7 1 9 9

WITH THE INFORMATION IT CONTAINS IS GIVEN WITH THE UNDERSTANDING THAT ALL NEGOTIATIONS RELATING TO THE PURCHASE, RENTING OR LEASING OF THE PROPERTY DESCRIBED ABOVE SHALL BE CONDUCTED THROUGH THIS OFFICE. ALL INFORMATION FURNISHED REGARDING PROPERTY FOR SALE, RENTAL OR FINANCING IS FROM SOURCES DEEMED IN OUR OPINION TO BE RELIABLE BUT NO REPRESENTATION IS MADE AS TO THE ACCURACY THEREOF AND IS SUBMITTED SUBJECT TO ERRORS, OMISSIONS, CHANGE OF PRICE, RENTAL OR OTHER CONDITIONS, PRIOR SALE, LEASE OR FINANCING OR WITHDRAWAL WITHOUT NOTICE. Rev. 7/17/25

THIS STATEMENT