

NE HEIGHTS OFFICES FOR LEASE

7410 Montgomery Blvd NE | ALBUQUERQUE, NM 87110

Prestigious Mossman Office Bldg

Busy NE Heights Location



CLAY AZAR, CCIM | (505) 480-9777 | clay@mcnm.com
(505) 858-1444 | 7410 Montgomery Blvd. NE, Suite 205 | Albuquerque, NM 87109

Metro Commercial
REALTY. INC.

OFFICES FOR LEASE

7410 Montgomery Blvd NE | ALBUQUERQUE, NM 87109

Space Highlights:

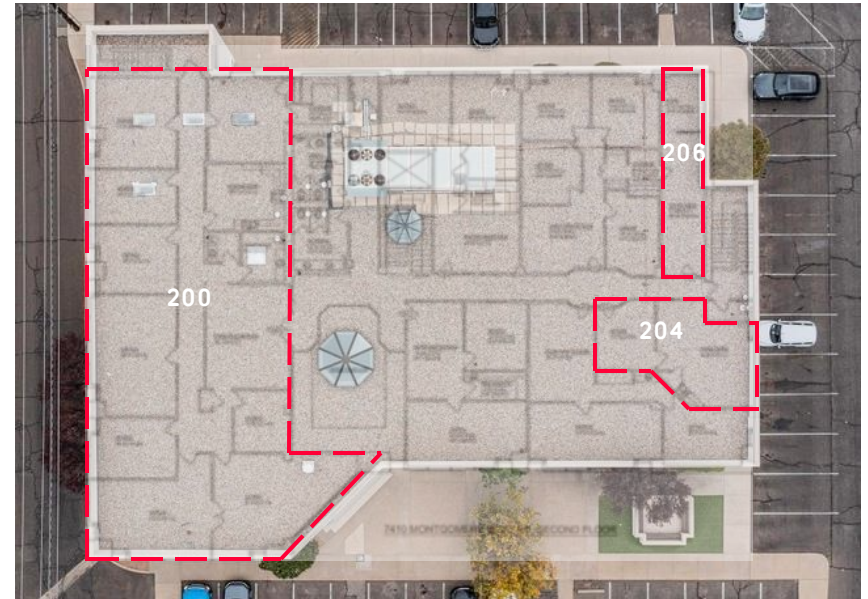
- Four available suites available ranging from 341 sf – 3,969 +/- sf.
- \$18 PSF full-service, tenant responsible for phone and internet.

Property Highlights:

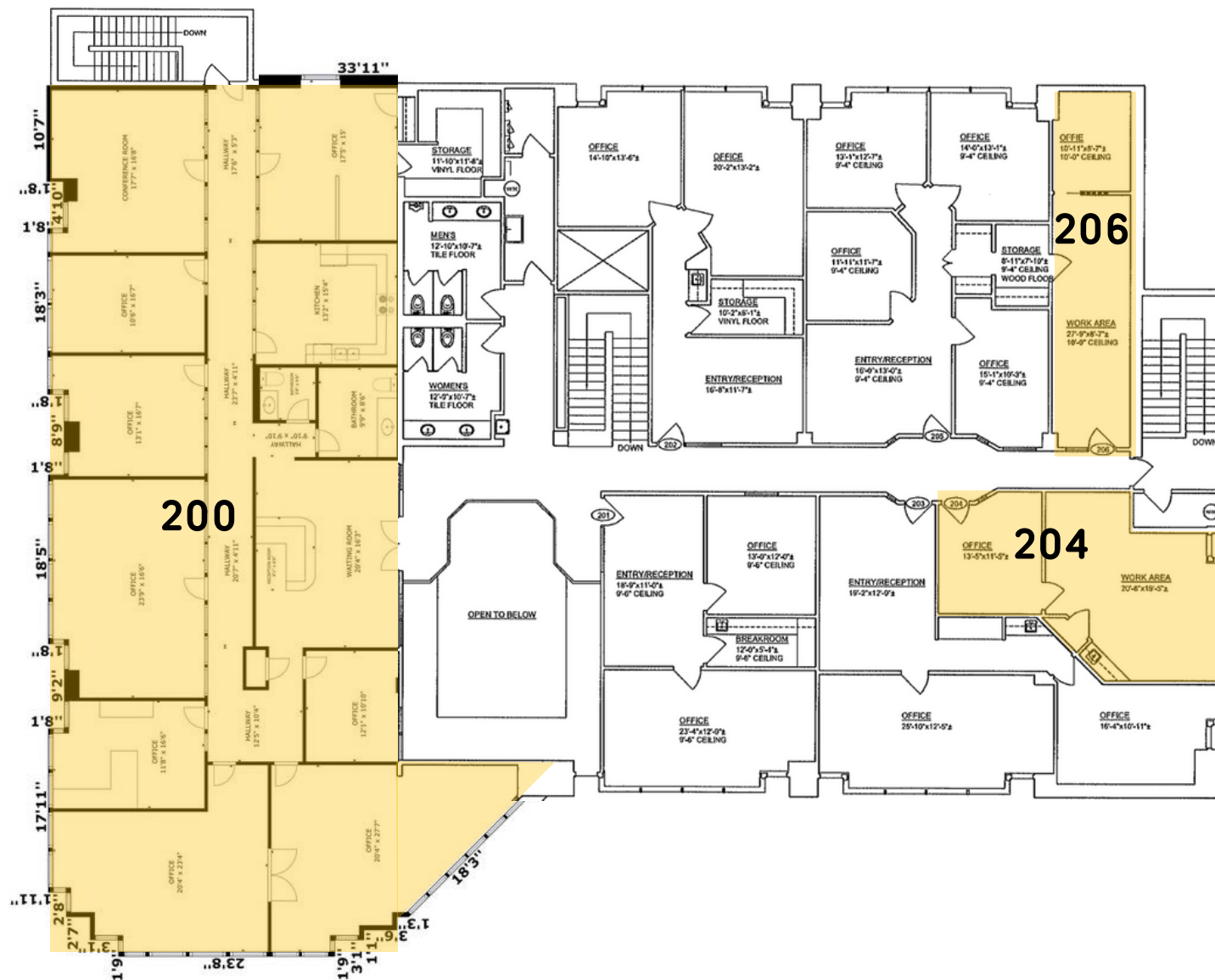
- Office space in the heart of the heights in the prestigious Mossman Building.
- Central location with many surrounding amenities, restaurants, with easy access to Uptown.
- Ample parking.
- Secure access.
- Monument signage available.
- Bright, beautiful building.
- Elevator scheduled for install Q3 2025.
- MX-M Zoning: [Moderate Intensity Zone District](#)



The information herein has been obtained from sources believed to be reliable. While we do not doubt its accuracy, we have not verified it and make no guarantee, warranty or representation about it. It is your responsibility to independently confirm its accuracy and completeness. Any projections, opinions, assumptions or estimates used are for example only and do not represent the current or future performance of the property. The value of this transaction to you depends on tax and other factors which should be evaluated by your tax, financial, and legal advisors. You and your advisors should conduct a careful, independent investigation of the property to determine to your satisfaction the suitability of the property for your needs.



2nd FLOOR AVAILABILITY



Available Suites:

- Suite 200:
 - 3,969 +/- sf
 - \$5,953.50 per month
- Suite 204:
 - 500 +/- sf
 - \$750.00 per month
- Suite 206:
 - 341 +/- sf
 - \$511.50 per month





CLAY AZAR, CCIM | (505) 480-9777 | clay@mcrnm.com
 (505) 858-1444 | 7410 Montgomery Blvd. NE, Suite 205 | Albuquerque, NM 87109





