



## RETAIL PROPERTY FOR LEASE

4104 Sonoma Ranch Blvd.  
Las Cruces, NM 88011



### OFFERING SUMMARY

Building SqFt	9,000 Sq. Ft.
Lot Size (acres)	1.0

### PROPERTY OVERVIEW

A versatile and modern office building spanning 9,000 sq. ft. is now available for lease in Las Cruces, NM. Flexible leasing options are offered with available spaces ranging from 1,800 sq. ft. to the full 9,000 sq. ft., making it ideal for businesses of all sizes. Lease rates are competitively priced between \$25 to \$32 per sq. ft., depending on unit size and amenities.

One of the units is equipped with a drive-through, offering added convenience for customer-facing businesses. With ample parking, a convenient location, and adaptable layouts, this property is perfect for a variety of professional, retail, or service-oriented tenants.

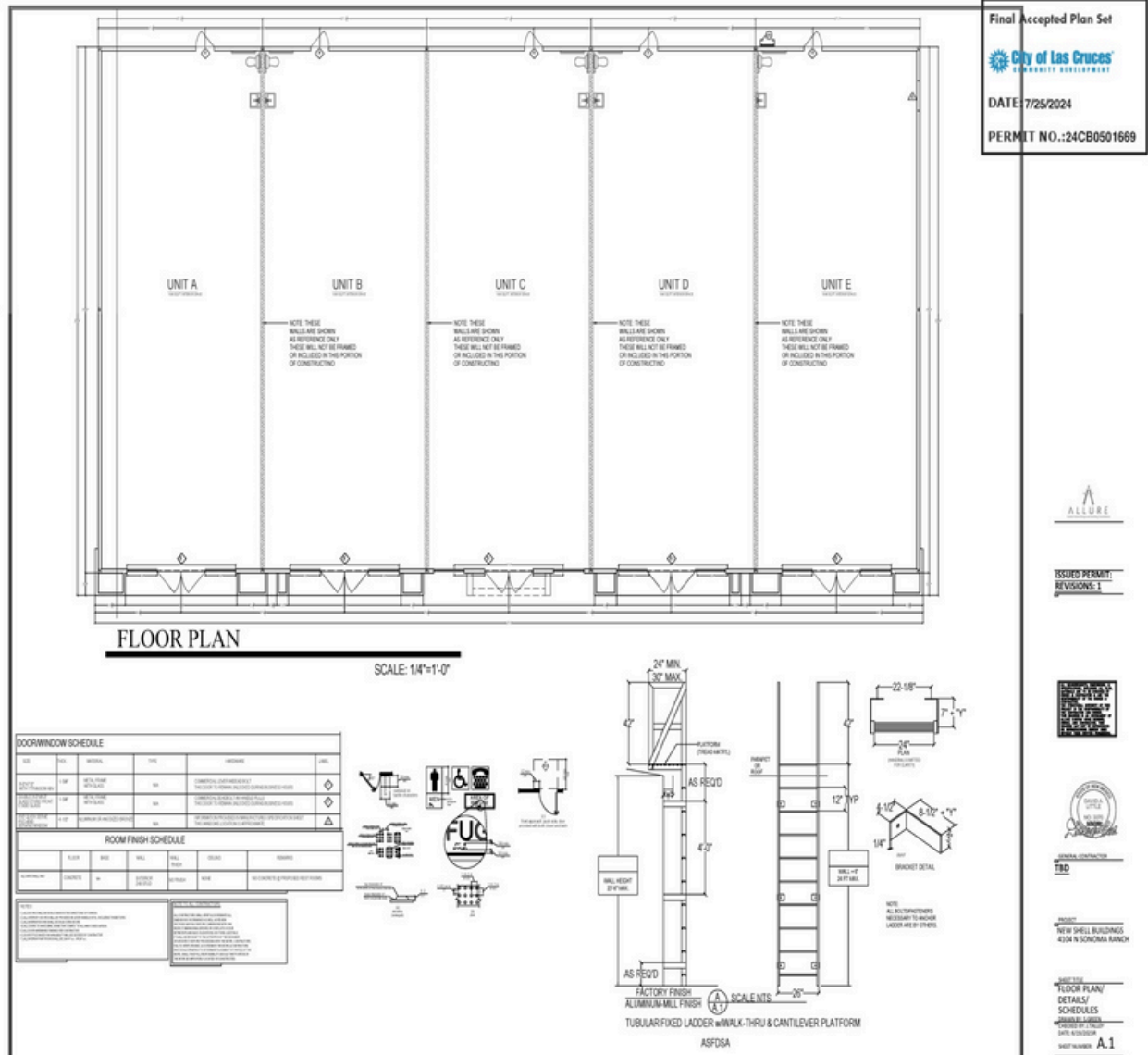
### PROPERTY HIGHLIGHTS

- Flexible lease options from 1,800 sq. ft. to 9,000 sq. ft.
- Property is strategically located in the Sonoma Ranch area with direct frontage on Sonoma Ranch Blvd.
- One unit includes a drive-through feature.
- Lease Rate: \$25 - \$32 per sq. ft.
- Ideal for offices, retail or services businesses.



Prosper Real Estate  
4440 N Sonoma Ranch Blvd. Ste. E  
Las Cruces, NM 88011  
Office: 575-222-7277  
[www.lascruces.luxury](http://www.lascruces.luxury)

Michael Carpenter  
Qualifying Broker  
Mobile: 575-652-0344  
[broker@lascruces.luxury](mailto:broker@lascruces.luxury)  
License #: 20529

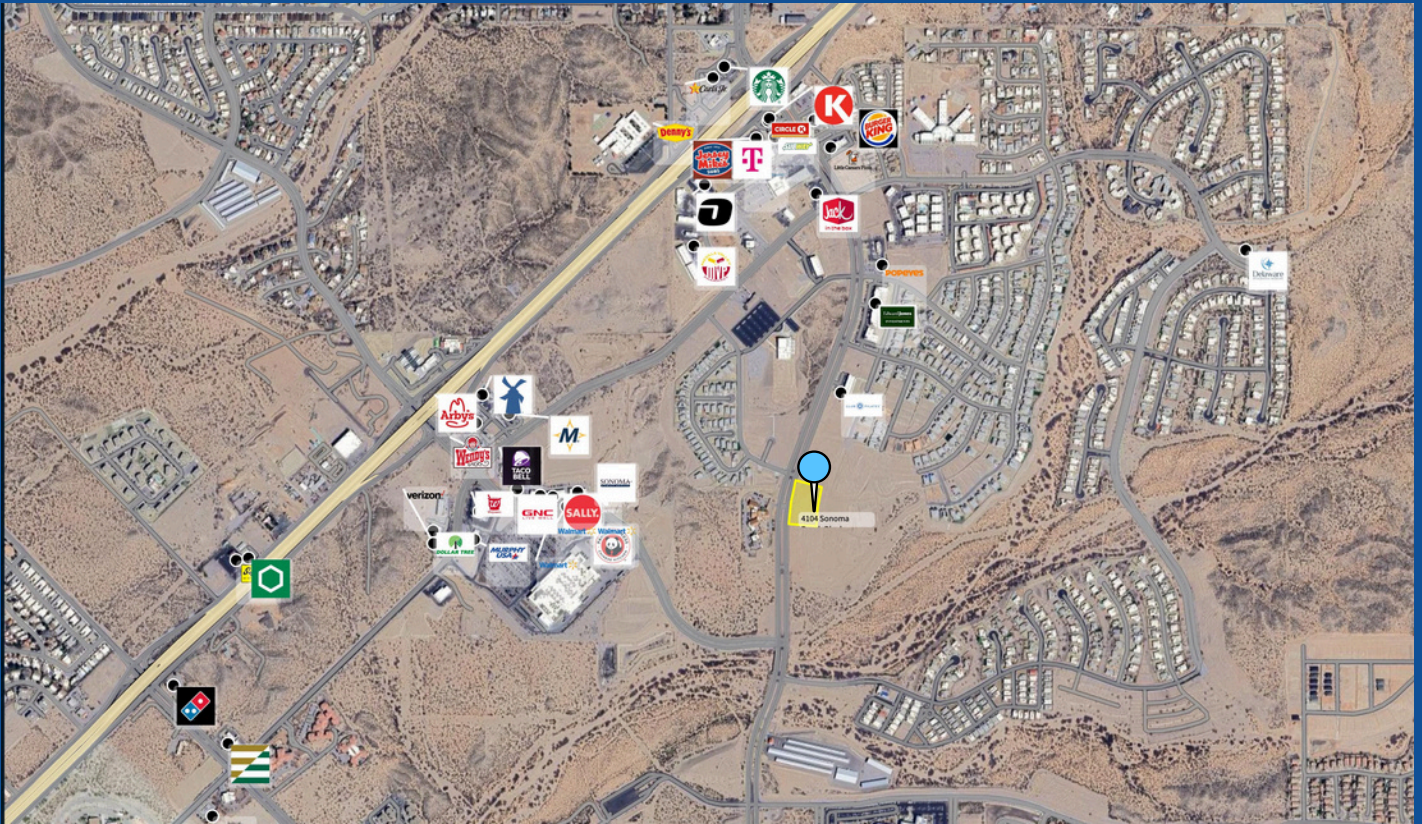






## RETAIL PROPERTY FOR LEASE

4104 Sonoma Ranch Blvd  
Las Cruces, NM 88011



Prosper Real Estate  
4440 N Sonoma Ranch Blvd. Ste. E  
Las Cruces, NM 88011  
Office: 575-222-7277  
[www.lascruces.luxury](http://www.lascruces.luxury)

Michael Carpenter  
Qualifying Broker  
Mobile: 575-652-0344  
[broker@lascruces.luxury](mailto:broker@lascruces.luxury)  
License #: 20529

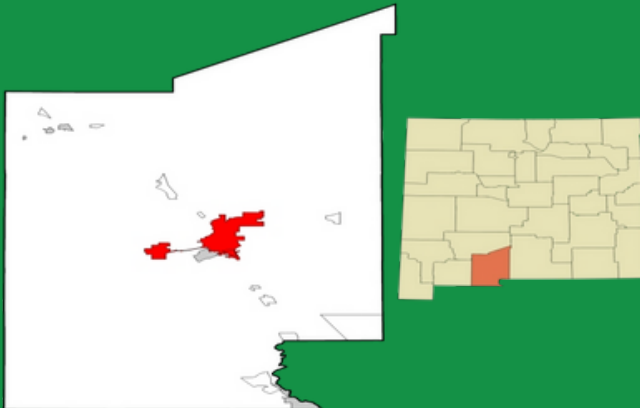


## RETAIL PROPERTY FOR LEASE

4104 Sonoma Ranch Blvd.  
Las Cruces, NM 88011

## ABOUT LAS CRUCES

Las Cruces (Spanish: [las 'kruses] "the crosses") is the second-most populous city in the U.S. state of New Mexico and the seat of Doña Ana County. As of the 2020 census the population was 111,385. Las Cruces is the most populous city in both Doña Ana County and southern New Mexico.



### CITY OF LAS CRUCES

County

### AREA

City	77 sq mi
Land	76.9 sq mi
Water	0.1 sq mi
Elevation	3900 ft

### POPULATION

Population	111,385
Density	1,447.82 sq mi



Prosper Real Estate  
4440 N Sonoma Ranch Blvd. Ste.E  
Las Cruces, NM 88011  
Office: 575-222-7277  
[www.lascruces.luxury](http://www.lascruces.luxury)

Michael Carpenter  
Qualifying Broker  
Mobile: 575-652-0344  
[broker@lascruces.luxury](mailto:broker@lascruces.luxury)  
License #: 20529