

STUDIOS AT PARKWAY

PHASE II

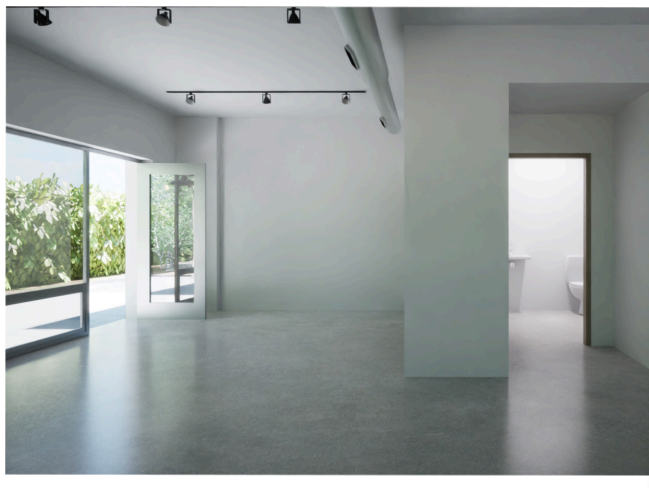


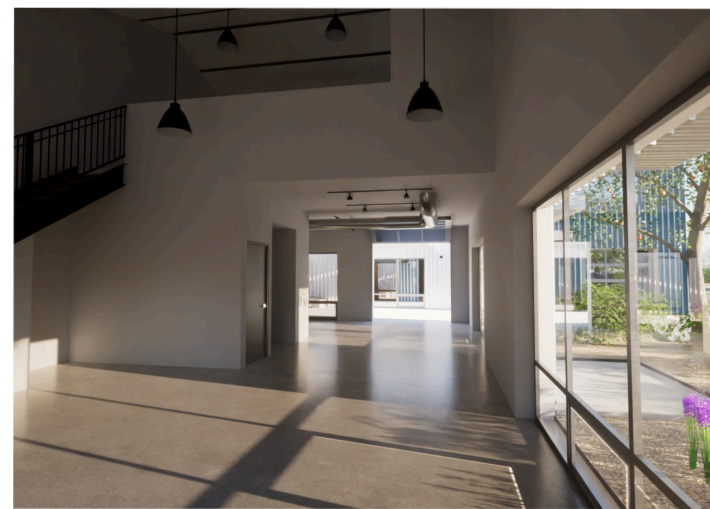
1189 PARKWAY DR, SANTA FE, NM 87507

LIST PRICE: **\$525,000**

- 1587 SQ FT
- I-1 ZONING
- CONTEMPORARY DESIGN
- NEW CONSTRUCTION

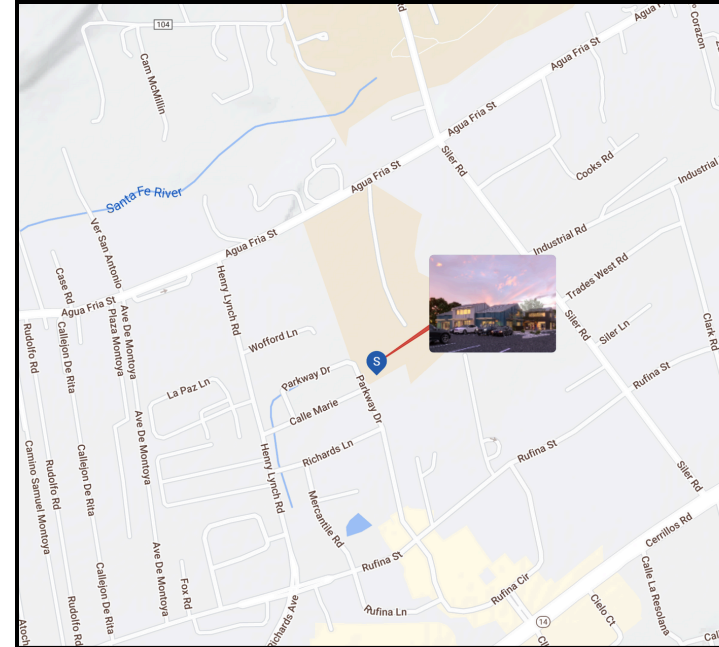






THE STUDIOS AT PARKWAY, SANTA FE'S NEWEST FLEX-USE CONDOS

The Studios at Parkway, currently under construction, Santa Fe's newest commercial, industrial, flex-use condominium development in the burgeoning Warehouse/Art & Innovation District of Siler/Rufina. The Studios industrial aesthetic feature lofty, open and inspiring light- filled spaces with contemporary design providing the ideal setting for businesses to thrive. Each unit has tall ceilings, generous roll up aluminum glass garage doors, expansive store front windows, finished concrete floors, LED lighting, handcrafted steel staircases with wood treads & smooth drywall finishes. Ground floor is 1,092 sf, second story is 584 sf.



Separately metered utilities, provisions stubbed out for a kitchen, planned location for a shower and landscaped grounds that are pleasing and thoughtfully considered for shipping and receiving. These state-of-the-art condominiums are zoned I-1 suitable for offices, galleries, light industry, artists, warehouses, health and wellness businesses and countless other purposes. Stubbed out for Solar PV on Roof. Property is a Federal Opportunity Zone.



LESLIE GIORGETTI

📞 (505) 670-7578

✉️ giorgettirealty@gmail.com

