

Colliers

Accelerating success.

Your Sign
Here



Office Space in North I-25 Corridor

For Lease

1500 N Renaissance Blvd NE, Suite B
Albuquerque, NM 87107

John Ransom, CCIM, SIOR

SR. VP/Principal
+1 505 880 7011
john.ransom@colliers.com
License #11451

Tim With, CCIM, SIOR

SR. VP/Principal
+1 505 880 7092
tim.with@colliers.com
License #36272

1500 N Renaissance | For Lease

Property Profile

Details

Lease Rate	\$12.00 PSF
Lease Type	NNN (Est. \$2.75 PSF)
Suite Available	B ± 6,419 SF
Zoning	NR-BP (Non-Residential Business Park)
Available	10/31/2023 (existing tenant could vacate early)

Features

- Easy access to I-25 via Montano Rd
- Fully sprinkled
- Refrigerated air in office
- Ample parking
- Zoned NR-BP (City of Albuquerque)
- Building signage available
- Close to food, services and shopping
- Suitable for office or showroom uses



1500 N Renaissance | For Lease

Intersection Aerial

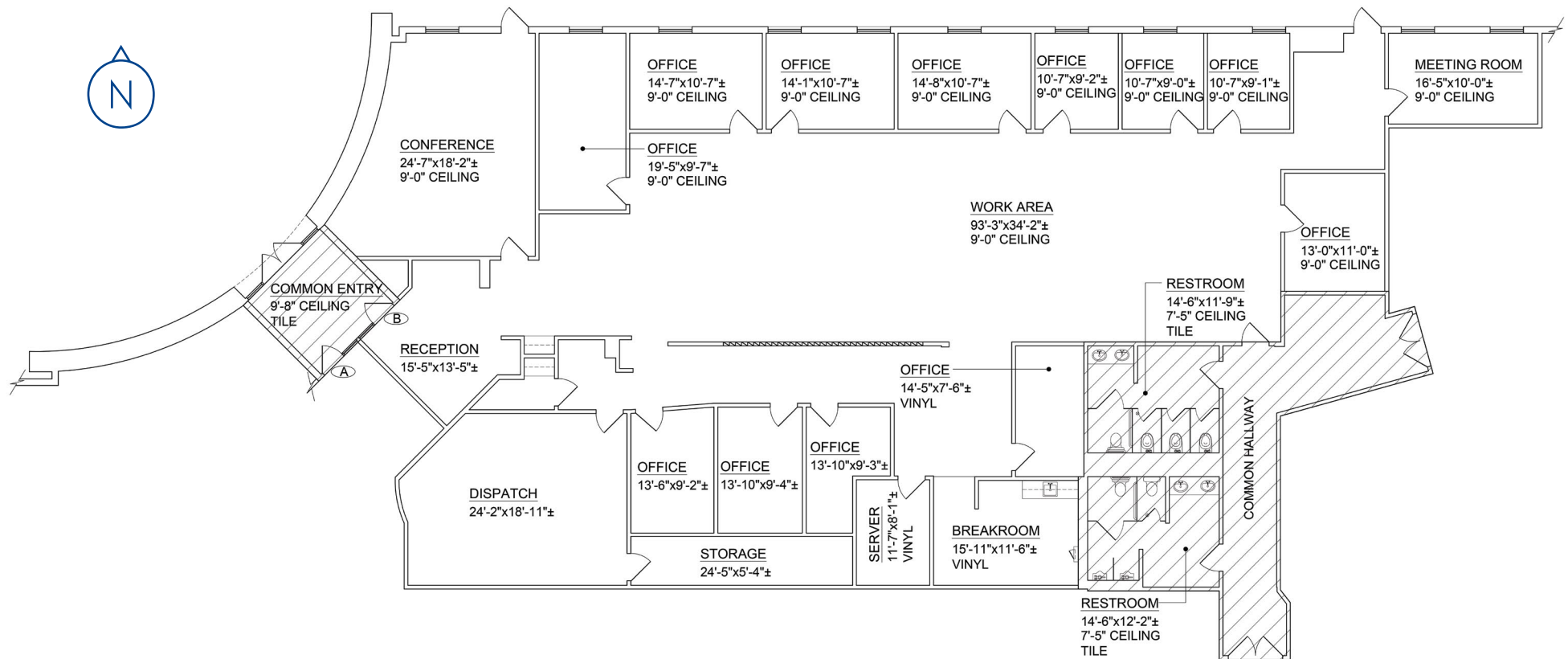


1500 N Renaissance | For Lease

Trade Area Aerial

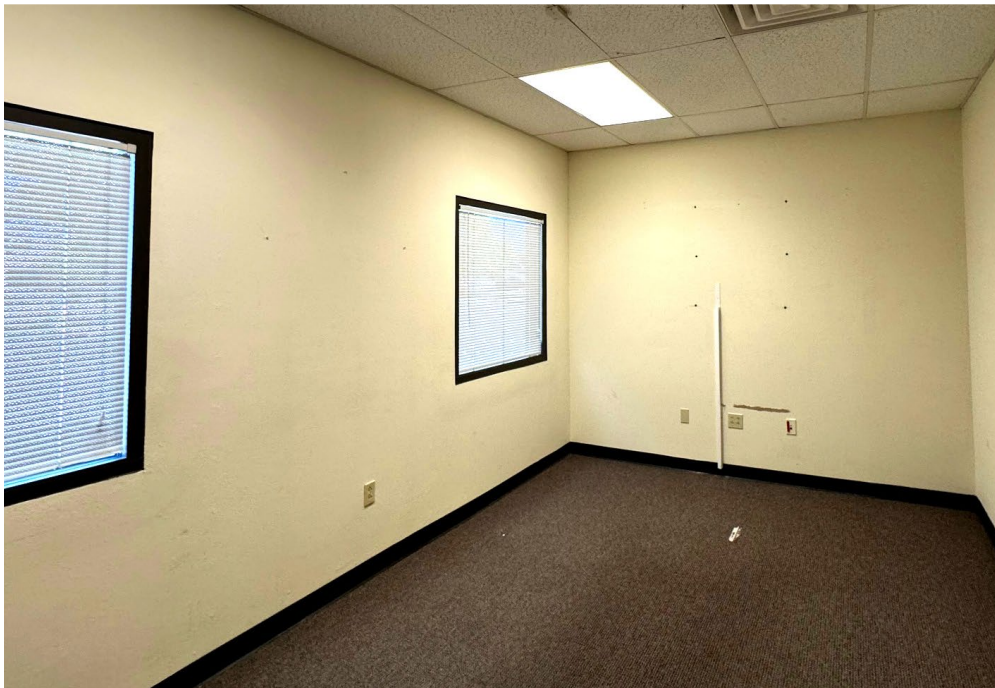
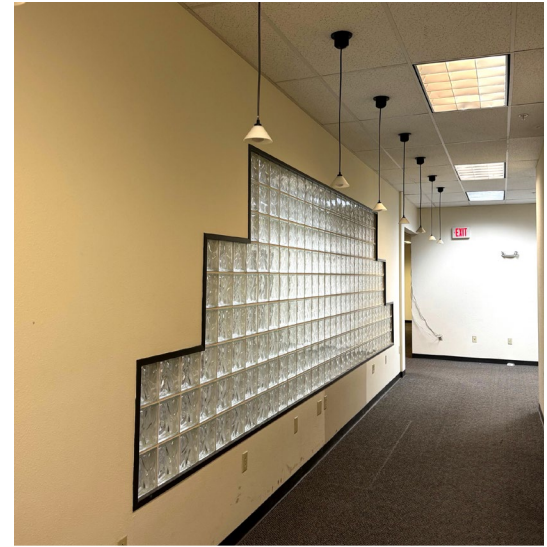


Floor Plan



1500 N Renaissance | For Lease

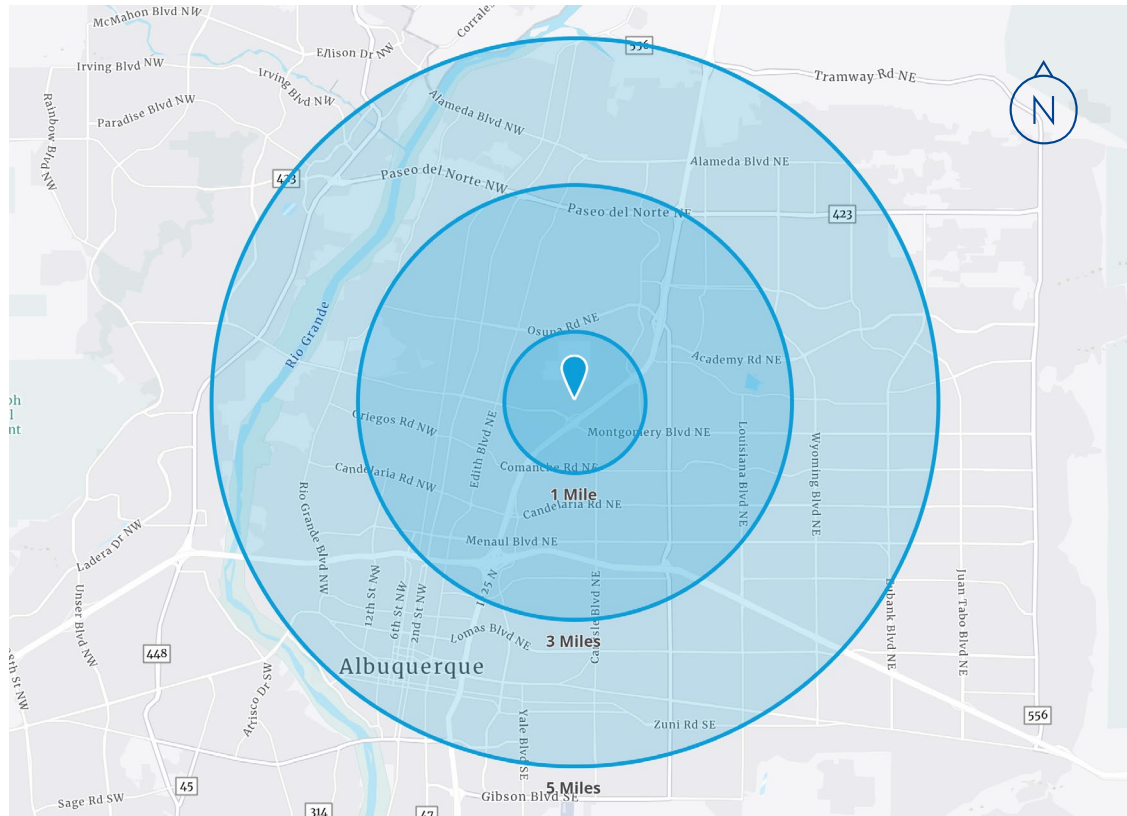
Property Gallery



1500 N Renaissance | For Lease

Demographics*

* Demographic data derived from esri® 2022



	1 Mile	3 Miles	5 Miles
Population	7,651	85,272	253,938
Households	3,427	39,675	117,555
Median Age	31.7	39.4	40.3
Average HH Income	\$50,510	\$81,494	\$89,229
College Education	55.4%	69.4%	72.2%
Daytime Population	18,075	128,819	354,858