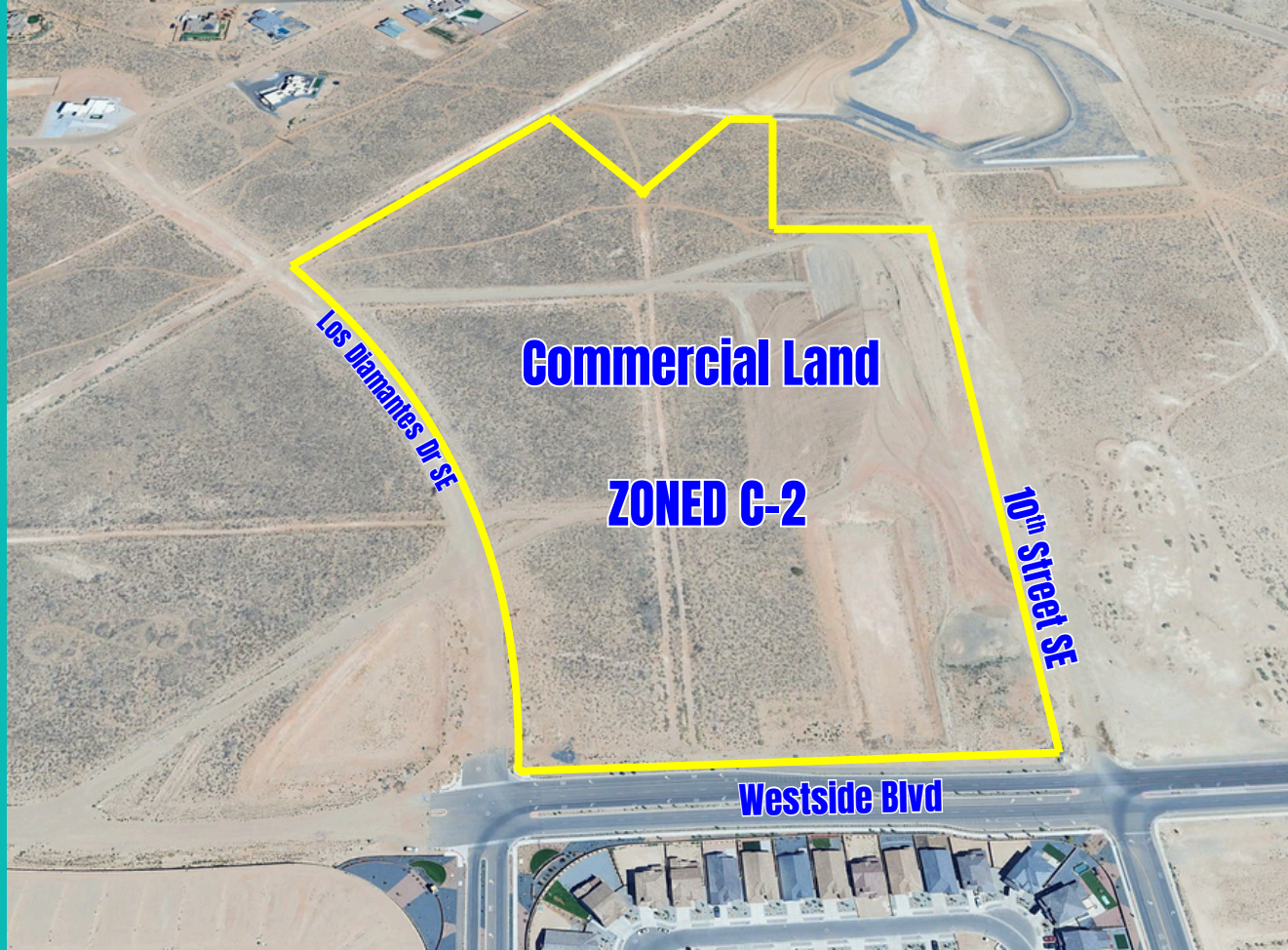


# LOS DIAMANTES FOR SALE

Vacant Land  
NWC Westside Blvd &  
10th St SE



**Sale Price: \$7 psf to \$12 psf**

**Lot size: min. 1 AC to 36.16  
AC available**

**Zoning: C-2**

## PROPERTY HIGHLIGHTS

- **Commercial Zoning Flexibility:** Zoned C-2, allowing for a dynamic mix of retail, office, and light industrial uses—perfect for creating a vibrant commercial campus!
- **Prime Location:** Strategically located adjacent to the newly developed Los Diamantes Residential Community, bringing a steady influx of potential customers and workforce!
- **Growing Community Hub:** Be part of a thriving neighborhood with over 500 single-family residences from Phase I & II and the newly initiated Phase III, adding 141 residential lots and a 220-unit multifamily complex!
- **Ready-to-Build Lots:** Utilities are already in place along Westside Blvd and LD Dr. SE, minimizing upfront costs and expediting development!
- **Affordable & Flexible Lot Sizes:** Lots start as low as \$7 psf, with 1-acre minimum lot sizes available—frontage on Westside Blvd starting at \$12 psf!

CORINNA YONEMOTO  
505.615.6859  
corinna@nvreg.com

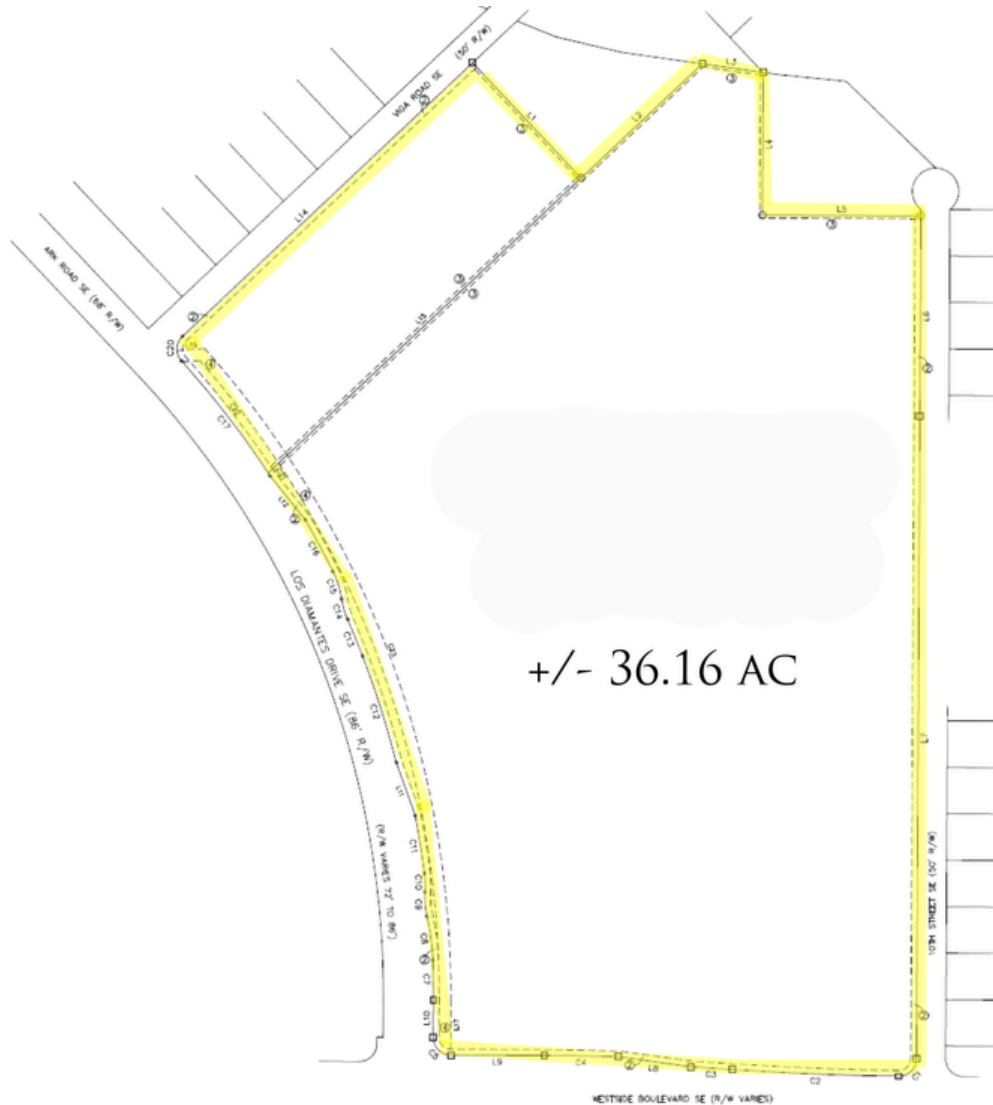
AMAR TESCH  
505.900.7203  
atesch@nvreg.com



NVREG.COM  
505.615.6859



# C-2 VACANT LAND FOR SALE



LOS DIAMANTES SUBDIVISION  
PHASE 1  
(BEING A REPLAT OF TRACT 2-A-1, LOS DIAMANTES, PHASE 1  
AND A PORTION OF VACATED LOS DIAMANTES DRIVE SE)  
WITHIN THE  
TOWN OF ALAMEDA GRANT  
PROJECTED SECTION 34  
TOWNSHIP 12 NORTH, RANGE 2 EAST, N.M.P.M.  
CITY OF RIO RANCHO  
SANDOVAL COUNTY, NEW MEXICO  
SEPTEMBER, 2023

+/- 36.16 AC

NVREG.COM

505.615.6859



CORINNA YONEMOTO

505.615.6859

[corinna@nvreg.com](mailto:corinna@nvreg.com)

AMAR TESCH

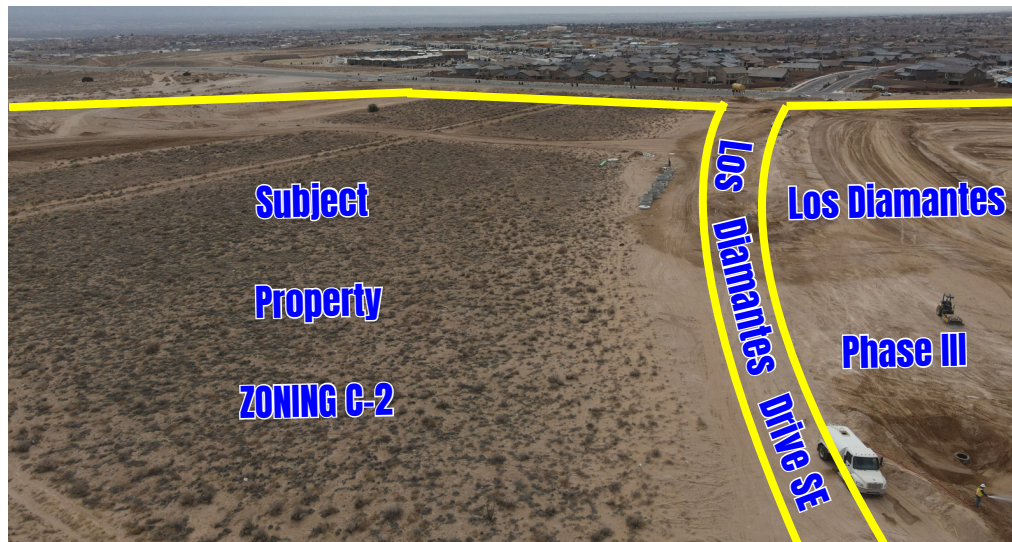
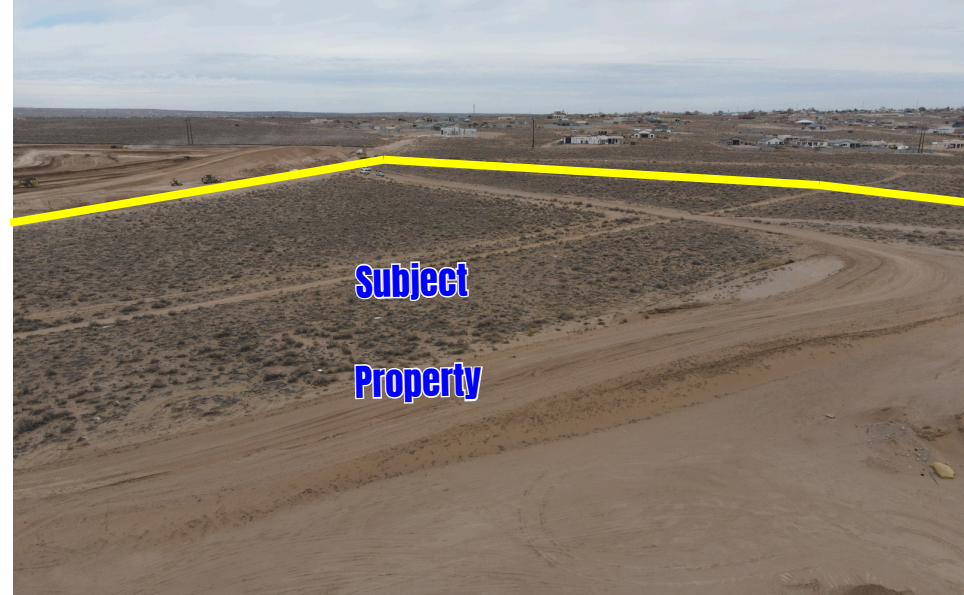
505.900.7203

[atesch@nvreg.com](mailto:atesch@nvreg.com)

THE INFORMATION CONTAINED IS BELIEVED RELIABLE. WHILE WE DO NOT DOUBT THE ACCURACY, WE HAVE NOT VERIFIED IT AND MAKE NO GUARANTEE, WARRANTY OR REPRESENTATION ABOUT IT. IT IS YOUR RESPONSIBILITY TO INDEPENDENTLY CONFIRM ITS ACCURACY.



# C-2 VACANT LAND FOR SALE



NVREG.COM

505.615.6859



**CORINNA YONEMOTO**

505.615.6859

corinna@nvreg.com

**AMAR TESCH**

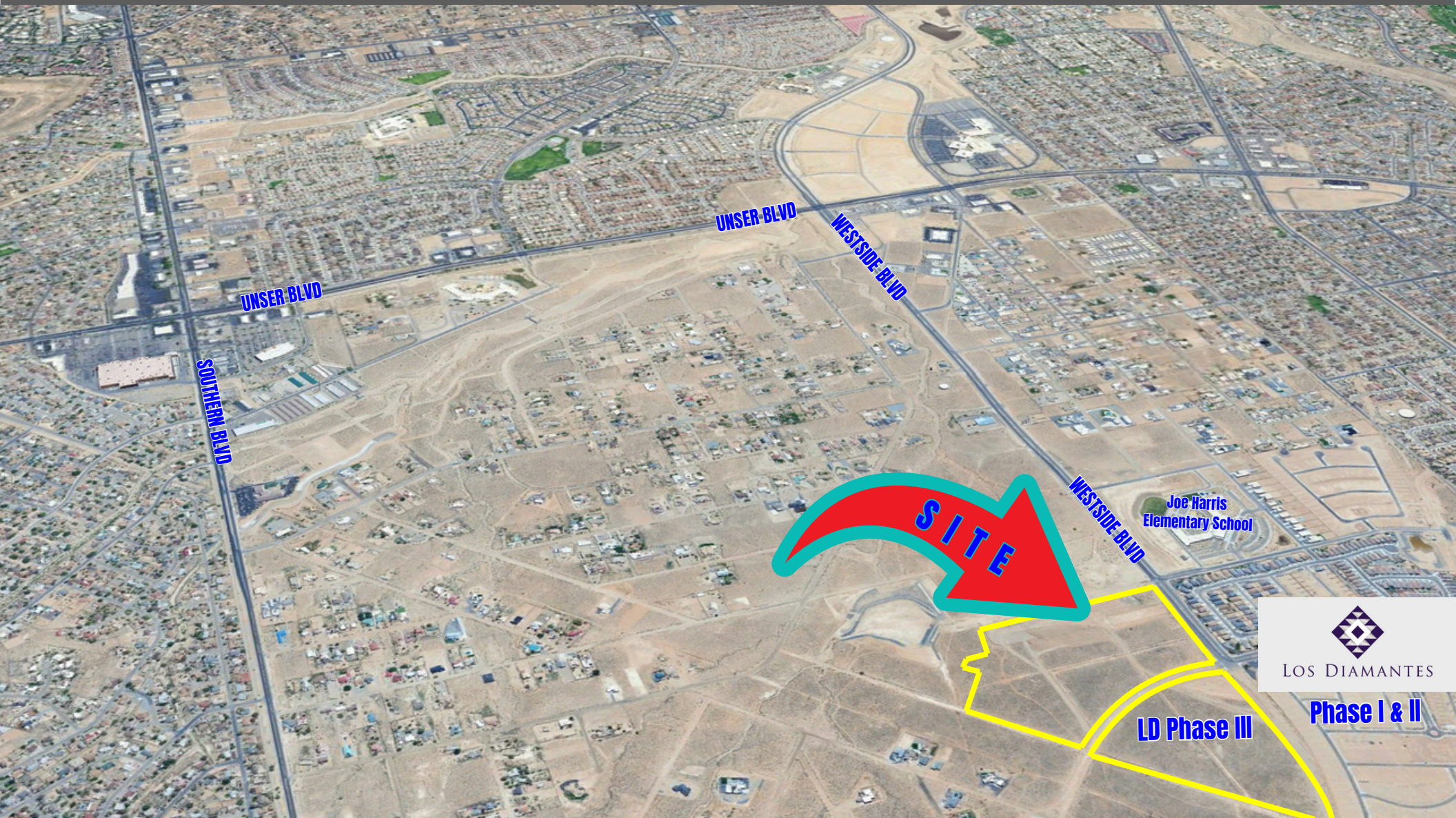
505.900.7203

atesch@nvreg.com

THE INFORMATION CONTAINED IS BELIEVED RELIABLE. WHILE WE DO NOT DOUBT THE ACCURACY, WE HAVE NOT VERIFIED IT AND MAKE NO GUARANTEE, WARRANTY OR REPRESENTATION ABOUT IT. IT IS YOUR RESPONSIBILITY TO INDEPENDENTLY CONFIRM ITS ACCURACY.



# C-2 VACANT LAND FOR SALE



LOS DIAMANTES

Phase I & II

LD Phase III



CORINNA YONEMOTO

505.615.6859

corinna@nvreg.com

AMAR TESCH

505.900.7203

atesch@nvreg.com

NVREG.COM

505.615.6859

THE INFORMATION CONTAINED IS BELIEVED RELIABLE. WHILE WE DO NOT DOUBT THE ACCURACY, WE HAVE NOT VERIFIED IT AND MAKE NO GUARANTEE, WARRANTY OR REPRESENTATION ABOUT IT. IT IS YOUR RESPONSIBILITY TO INDEPENDENTLY CONFIRM ITS ACCURACY.