

# Retail For Lease



RE/MAX Combined Investments

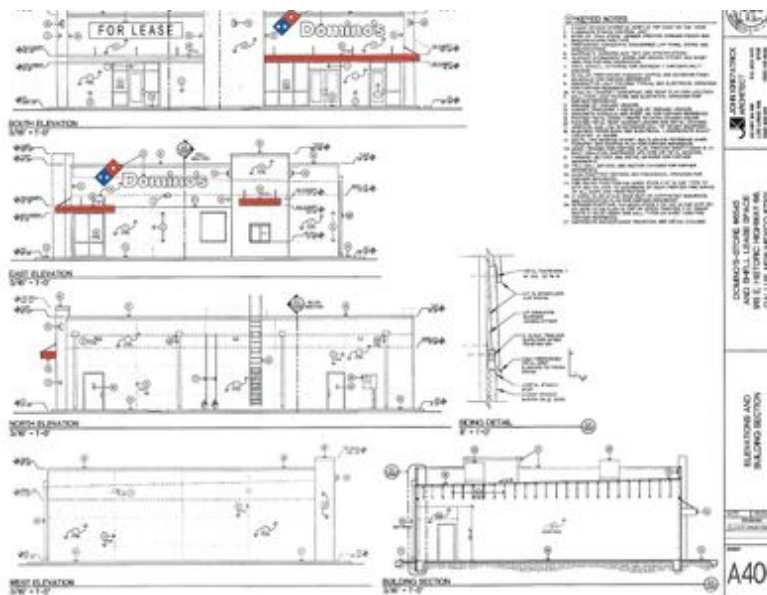
1638 S. 2nd Street Gallup, NM 87305 | 505-722-7811

## Domino's Pizza Building

915 E Highway 66, Gallup, NM, 87301

Retail: Restaurant For Lease

Prepared on October 11, 2023



### Listing Details | Retail For Lease

Suite	<b>B</b>	Rent Esc. Type	<b>Annual Percentage</b>
Sublease	<b>No</b>	Vacant	<b>Yes</b>
Total Available Space	<b>1,545 SF</b>	Available Date	<b>10/06/2023</b>
Min Div/Max Contig	<b>Not present/1,545 SF</b>	Days On Market	<b>9 days</b>
Asking Rate	<b>\$22.00 Annual/SF</b>	Date Listed	<b>10/02/2023</b>
Monthly Rate	<b>\$2,833</b>	Last Modified	<b>10/11/2023</b>
Lease Type	<b>NNN</b>	Listing ID	<b>39044117</b>
Expenses	<b>\$3.00 (Net)</b>	Parking Spaces	<b>9</b>
Lease Terms	<b>10 Years</b>		

### Description

Lease Space Available in the New Domino's Pizza Building- Downtown Gallup- Under construction. Plan to be open in 2023.  
Lease Space available. 1545 Sq Ft.

### Property Details

Building Class	<b>A</b>	Year Built/Renovated	<b>-</b>
Property Type	<b>Retail</b>	Primary Construction	<b>-</b>
Sub Type	<b>Restaurant</b>	Occupancy Type	<b>Single Tenant</b>
Zoning	<b>HC - Heavy Commercial</b>	Parcels	<b>-</b>
Building Status	<b>Proposed</b>	Legal Owner	<b>Bam! Financial Group, Llc</b>
Building Size	<b>1,545 SF</b>	Submarket	<b>-</b>
Land Size	<b>0.62 Acres / 27,007 SF</b>	County	<b>McKinley</b>

### Contact



**Dan K Frady**  
505-862-1852  
danfrady2@hotmail.com



RE/MAX Combined Investments



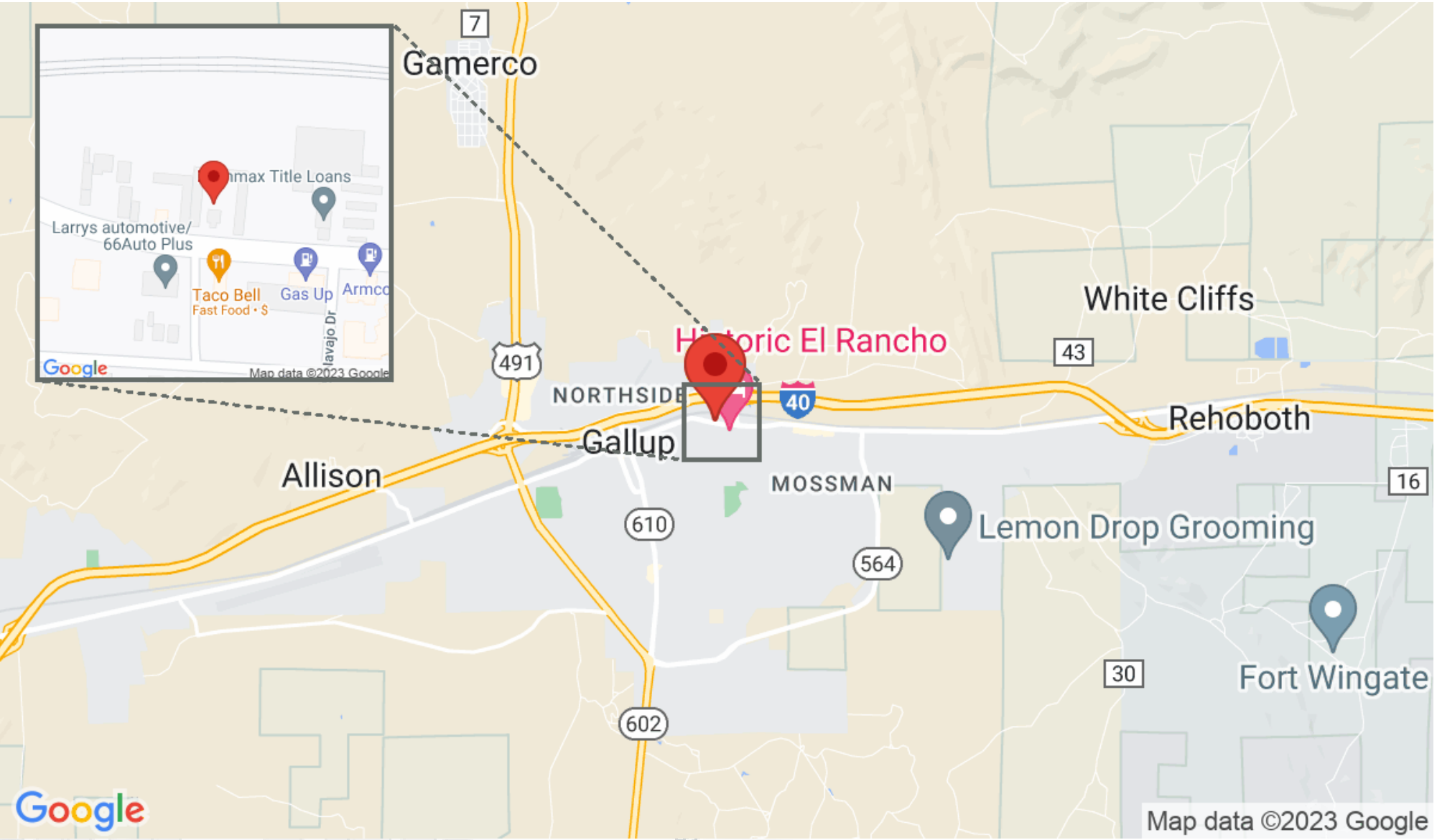
© Copyright Catylist. All Rights Reserved. The information presented herein is provided as is, without warranty of any kind. Neither the administrators of this site nor Catylist assume any liability for errors or omissions.

# 915 E Historic Hwy 66



RE/MAX Combined Investments

1638 S. 2nd Street Gallup, NM 87305 | 505-722-7811

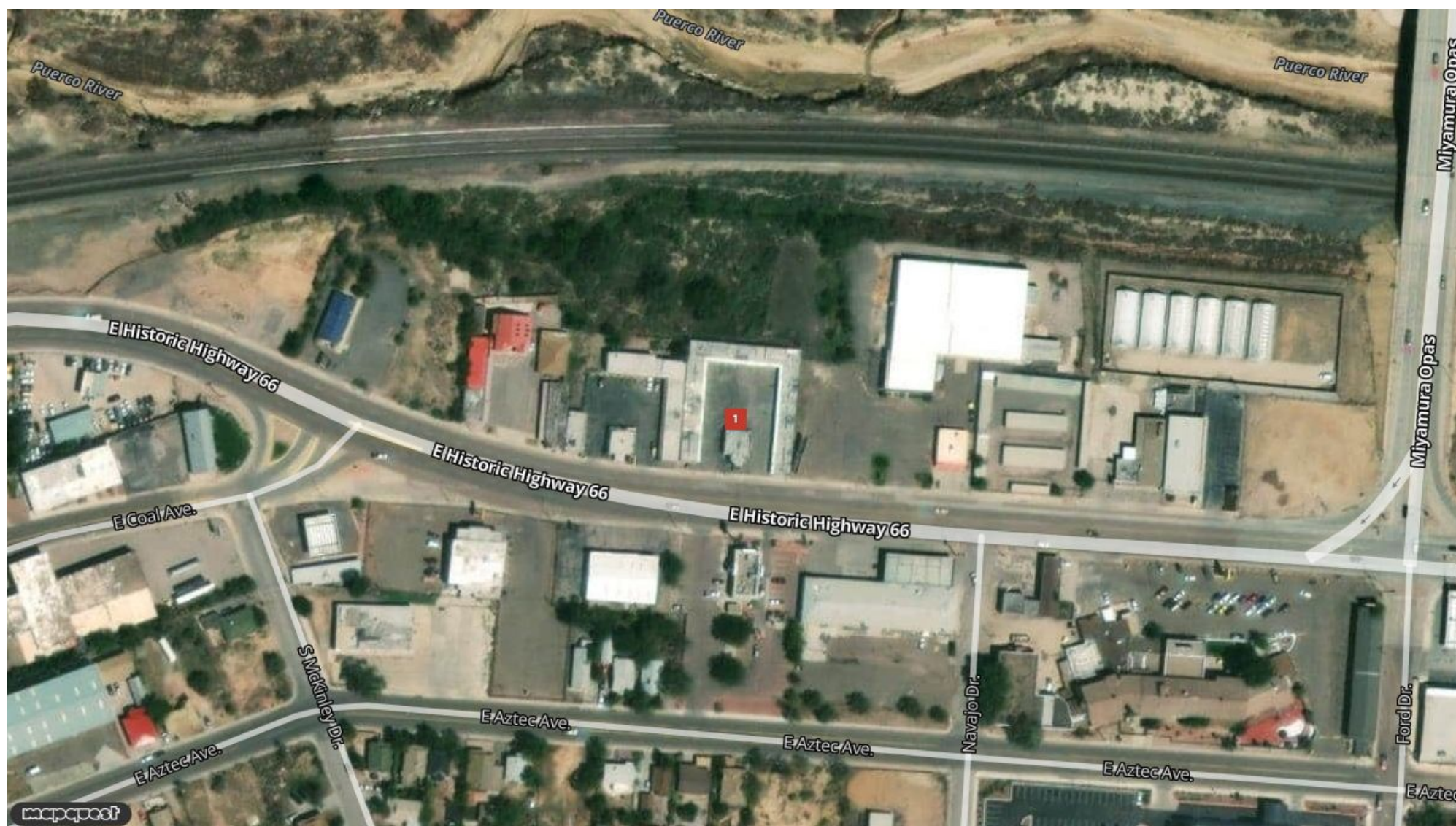


**Dan K Frady**  
danfrady2@hotmail.com  
505-862-1852



This information supplied herein is from sources we deem reliable. It is provided without any representation, warranty or guarantee, expressed or implied as to its accuracy. Prospective Buyer or Tenant should conduct an independent investigation and verification of all matters deemed to be material, including, but not limited to, statements of income and expenses. Consult your attorney, accountant, or other professional advisor





**Dan K Frady**  
 danfrady2@hotmail.com  
 505-862-1852



# 915 E Historic Hwy 66



RE/MAX Combined Investments

1638 S. 2nd Street Gallup, NM 87305 | 505-722-7811



# 915 E Historic Hwy 66

915 E Historic Hwy 66  
Gallup, NM 87301



**Dan K Frady**  
danfrady2@hotmail.com  
505-862-1852



This information supplied herein is from sources we deem reliable. It is provided without any representation, warranty or guarantee, expressed or implied as to its accuracy. Prospective Buyer or Tenant should conduct an independent investigation and verification of all matters deemed to be material, including, but not limited to, statements of income and expenses. Consult your attorney, accountant, or other prof. advisor.



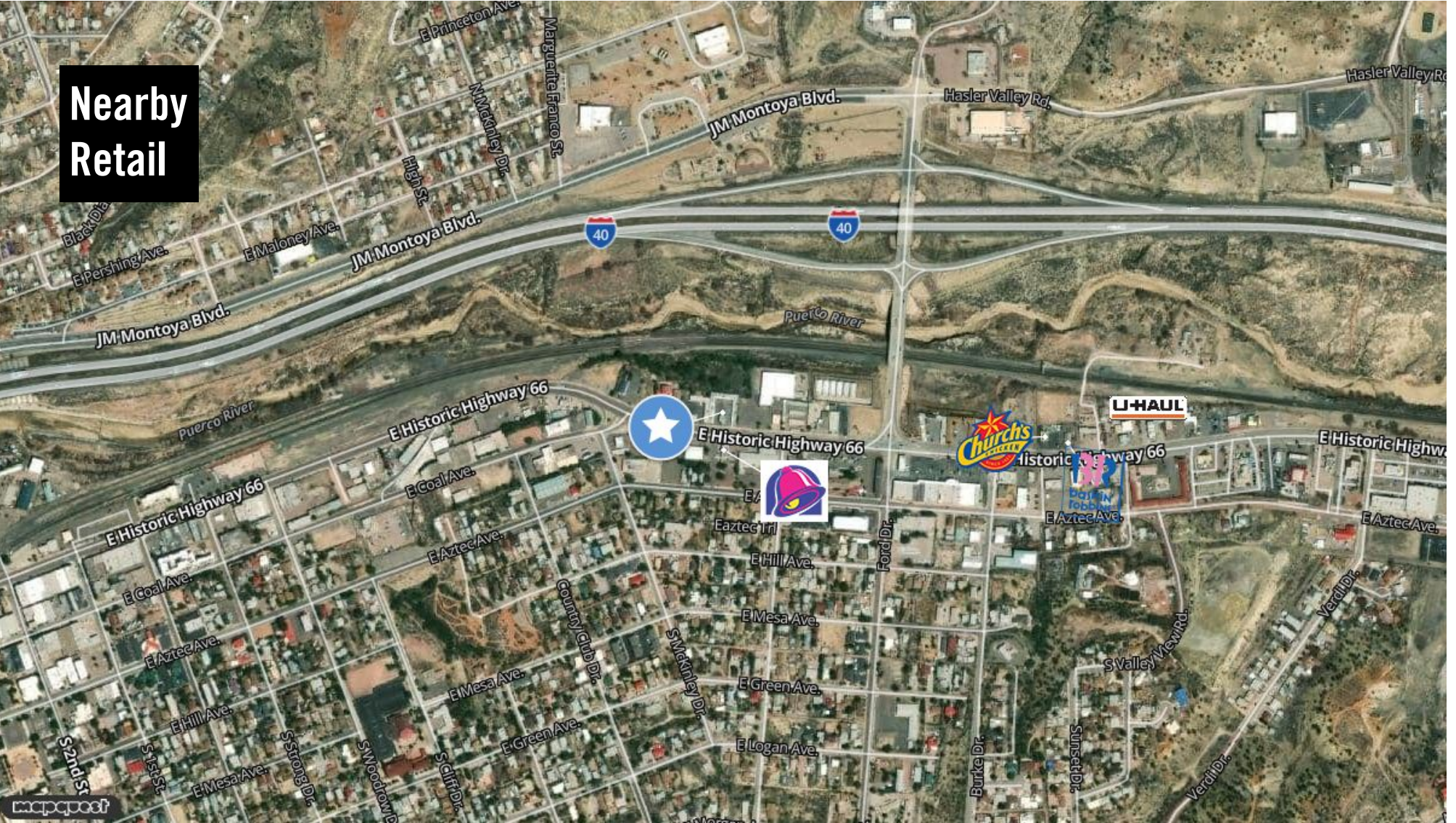
# 915 E Historic Hwy 66



RE/MAX Combined Investments

1638 S. 2nd Street Gallup, NM 87305 | 505-722-7811

Nearby  
Retail



Dan K Frady  
danfrady2@hotmail.com  
505-862-1852



This information supplied herein is from sources we deem reliable. It is provided without any representation, warranty or guarantee, expressed or implied as to its accuracy. Prospective Buyer or Tenant should conduct an independent investigation and verification of all matters deemed to be material, including, but not limited to, statements of income and expenses. Consult your attorney, accountant, or other professional advisor



# Location Facts & Demographics

Demographics are determined by a 10 minute drive from 915 E Historic Hwy 66, Gallup, NM 87301

CITY, STATE

Gallup, NM

POPULATION

22,656

AVG. HHSIZE

3.03

MEDIAN HH INCOME

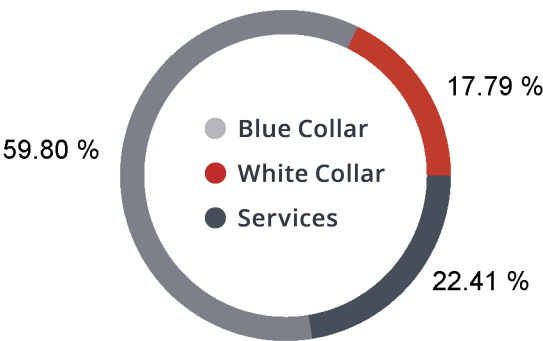
\$42,699

HOME OWNERSHIP

Renters: 3,482

Owners: 4,367

EMPLOYMENT



38.46 %

Employed

1.88 %

Unemployed

EDUCATION

High School Grad: 30.78 %

Some College: 20.71 %

Associates: 7.19 %

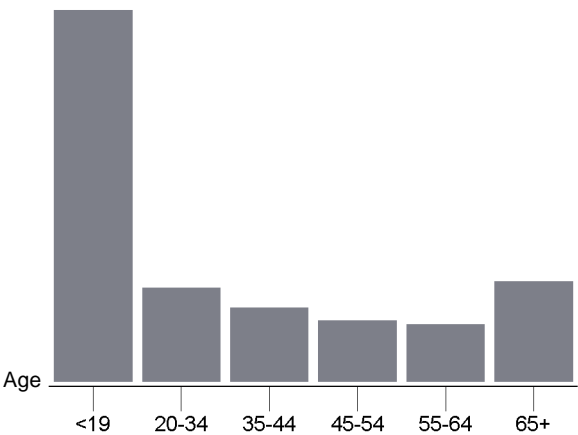
Bachelors: 22.25 %

GENDER & AGE

48.69 %



51.31 %



RACE & ETHNICITY

White: 26.26 %

Asian: 0.49 %

Native American: 31.33 %

Pacific Islanders: 0.01 %

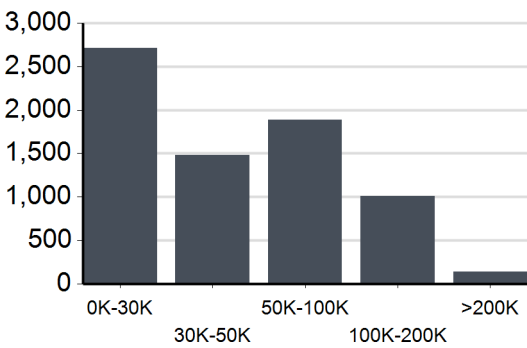
African-American: 0.14 %

Hispanic: 27.42 %

Two or More Races: 14.35 %



INCOME BY HOUSEHOLD



HH SPENDING



Housing

\$15,561



Grocery

\$5,552



Travel

\$5,738



Entertainment

\$2,480



Electricity

\$1,559



Apparel

\$1,133



Furniture

\$174



Gas

\$342