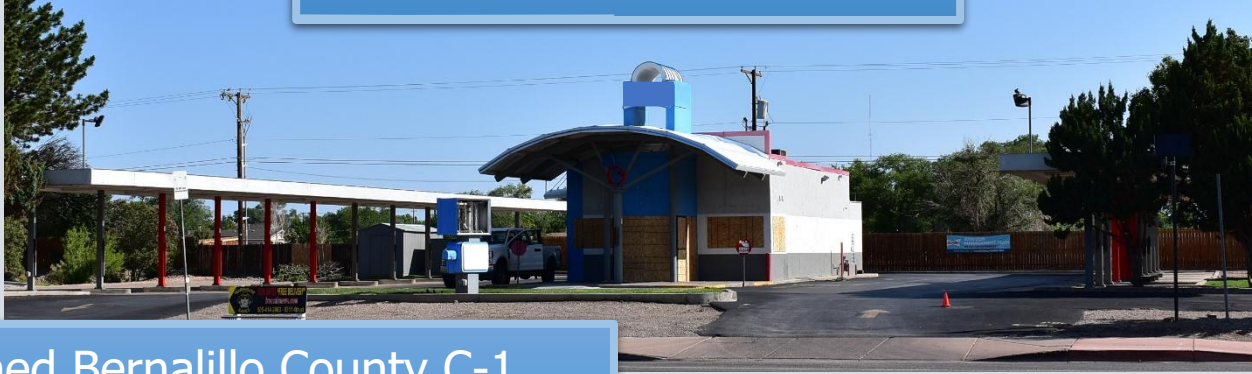


220 Alameda Blvd. NW
Albuquerque, New Mexico



Zoned Bernalillo County C-1
Land Area: 32,570+- Sq Ft
Building: 1,226+- Sq Ft

"Click" Here
Satellite Map

Available As
Absolute NNN
Offered "As Is"



The Brokerage Realty ABQ., LLC
Commercial Real Estate Brokerage

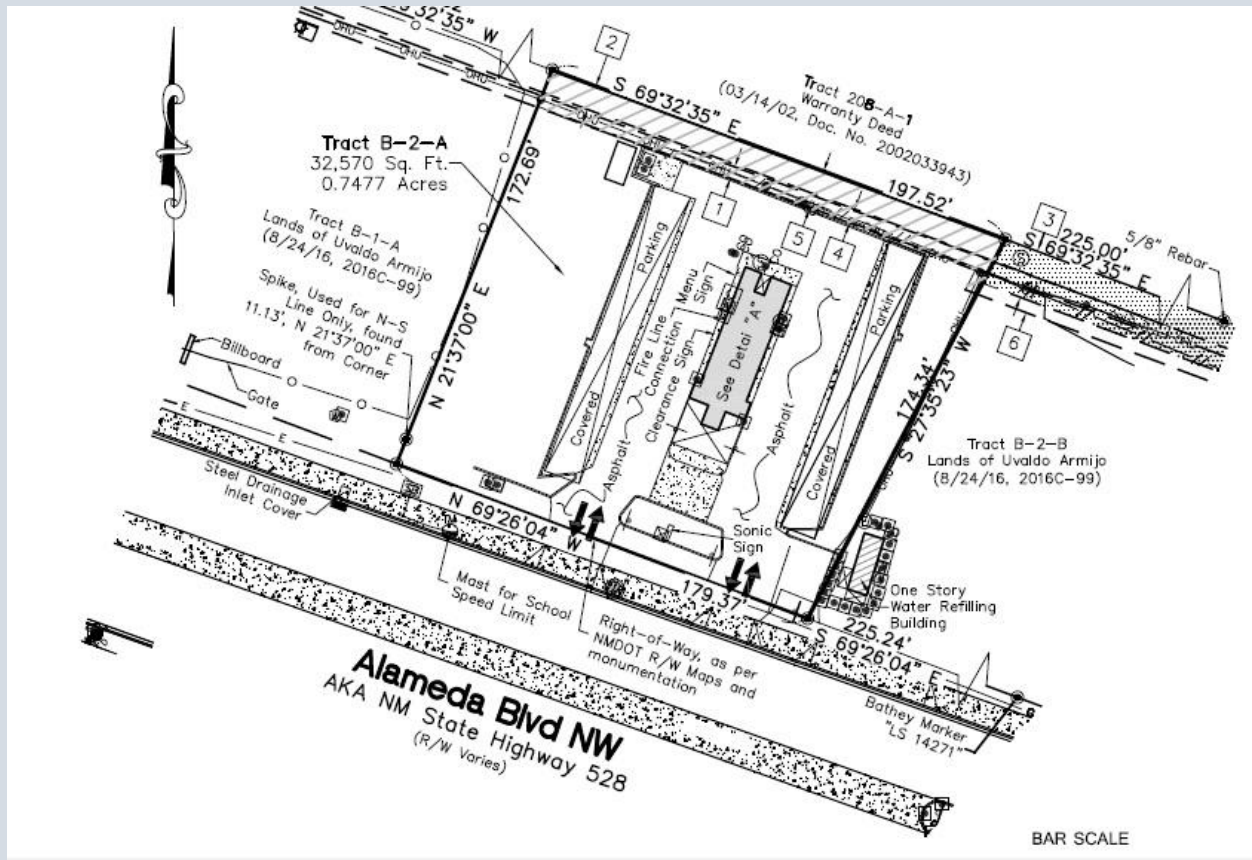
C: 505-480-7524



www.Acre9.com

Jeremy Gonzales-Qualifying Broker

6152 Deergrass Circle NW Albuquerque, New Mexico 87120
Phone: 505-299-6983 Fax: 505-459-0969
SiteSelect@hotmail.com



One Story Fast Food Restaurant
1,226 Sq. Ft.

50.9'

7.0'

8.0'

4.3'

8.9'

8.0'

50.9'

7.1'

2.1'

8.4'

8.2'

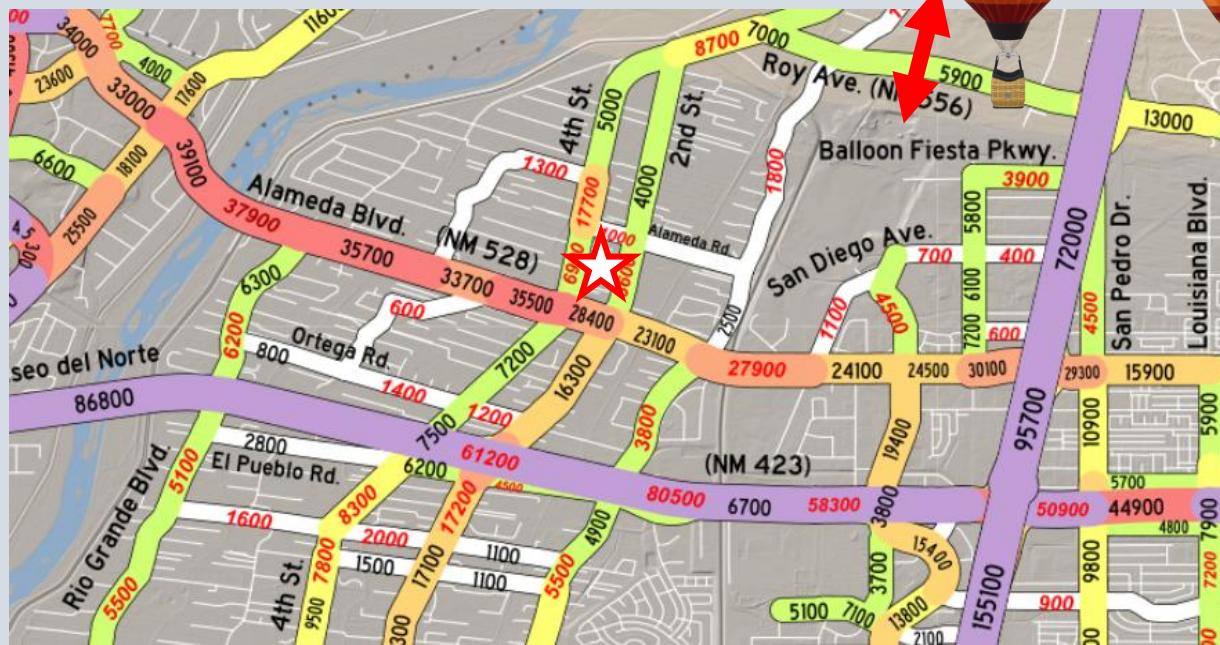
7.5'

8.2'

2.0'

8.4'

7.1'



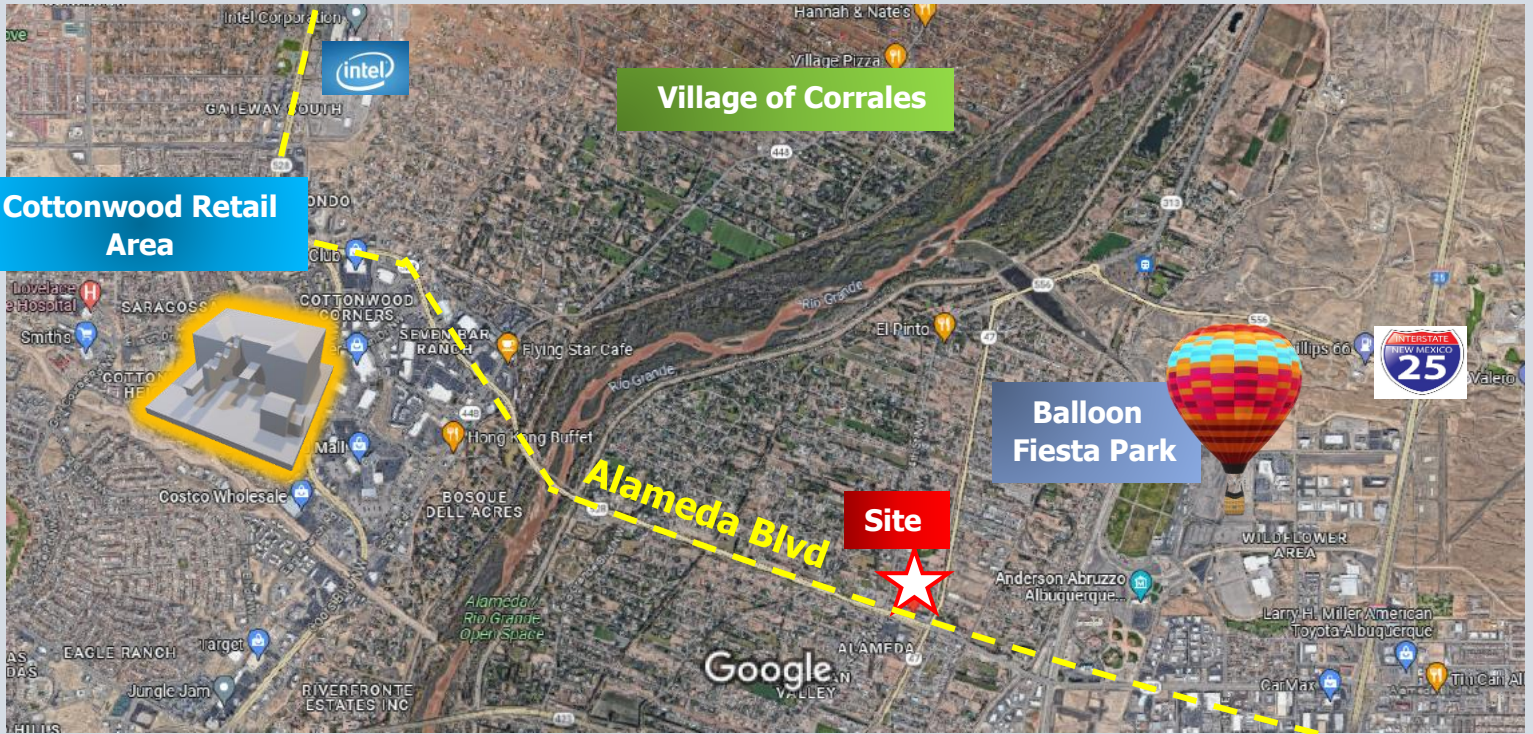
Alameda Blvd is a river crossing, connecting NW Albuquerque and Rio Rancho to the NE side of Albuquerque

The Brokerage Realty ABQ., LLC
Commercial Real Estate Brokerage



C: 505-480-7524 www.Acre9.com

Jeremy Gonzales-Qualifying Broker
6152 Deergrass Circle NW Albuquerque, New Mexico 87120
Phone: 505-299-6983 Fax: 505-459-0969
SiteSelect@hotmail.com



The Brokerage Realty ABQ., LLC

Commercial Real Estate Brokerage

C: 505-480-7524



www.Acre9.com

Jeremy Gonzales-Qualifying Broker

6152 Deergass Circle NW Albuquerque, New Mexico 87120

Phone: 505-299-6983

Fax: 505-459-0969

SiteSelect@hotmail.com

THE INFORMATION CONTAINED HEREIN HAS BEEN OBTAINED FROM SOURCES DEEMED RELIABLE, THOUGH WE DO NOT DOUBT THE ACCURACY OF THE INFORMATION, IT IS NOT GUARANTEED. THIS INFORMATION IS SUBMITTED SUBJECT TO ERRORS, OMISSIONS, CHANGE(S) IN PRICE, TERMS, CONDITIONS, PRIOR SALES, OR WITHDRAWAL FROM THE MARKET WITHOUT NOTICE. BROKERS MAKE NO GUARANTEE OR WARRANTIES, EITHER EXPRESS OR IMPLIED AS TO THE COMPLETENESS OR ACCURACY OF THE INFORMATION CONTAINED HEREIN. IT IS THE RESPONSIBILITY OF THE READER TO INDEPENDENTLY CONFIRM THE ACCURACY AND COMPLETENESS OF THE INFORMATION CONTAINED HEREIN.

The Brokerage Realty ABQ., LLC
Commercial Real Estate Brokerage

C: 505-480-7524  www.Acre9.com

Jeremy Gonzales-Qualifying Broker
6152 Deergass Circle NW Albuquerque, New Mexico 87120
Phone: 505-299-6983 Fax: 505-459-0969
SiteSelect@hotmail.com