



2780 W. Picacho Ave

Las Cruces, New Mexico 88007

Property Highlights

- Adjacent users include Walgreens, Subway, Circle K, Valero, Citizen's Bank and more
- Nearby Mayfield High School and Picacho Middle School
- Located within 1/2 mile of Dona Ana County Government Complex
- Main retail intersection servicing Legends West & Picacho Hills, two of the largest subdivisions on the West side
- Space may be subdivided or leased as a whole

Offering Summary

Lease Rate:	Starting At \$15.00 SF/yr (NNN)
Available SF:	1,470 - 8,820 +/- SF

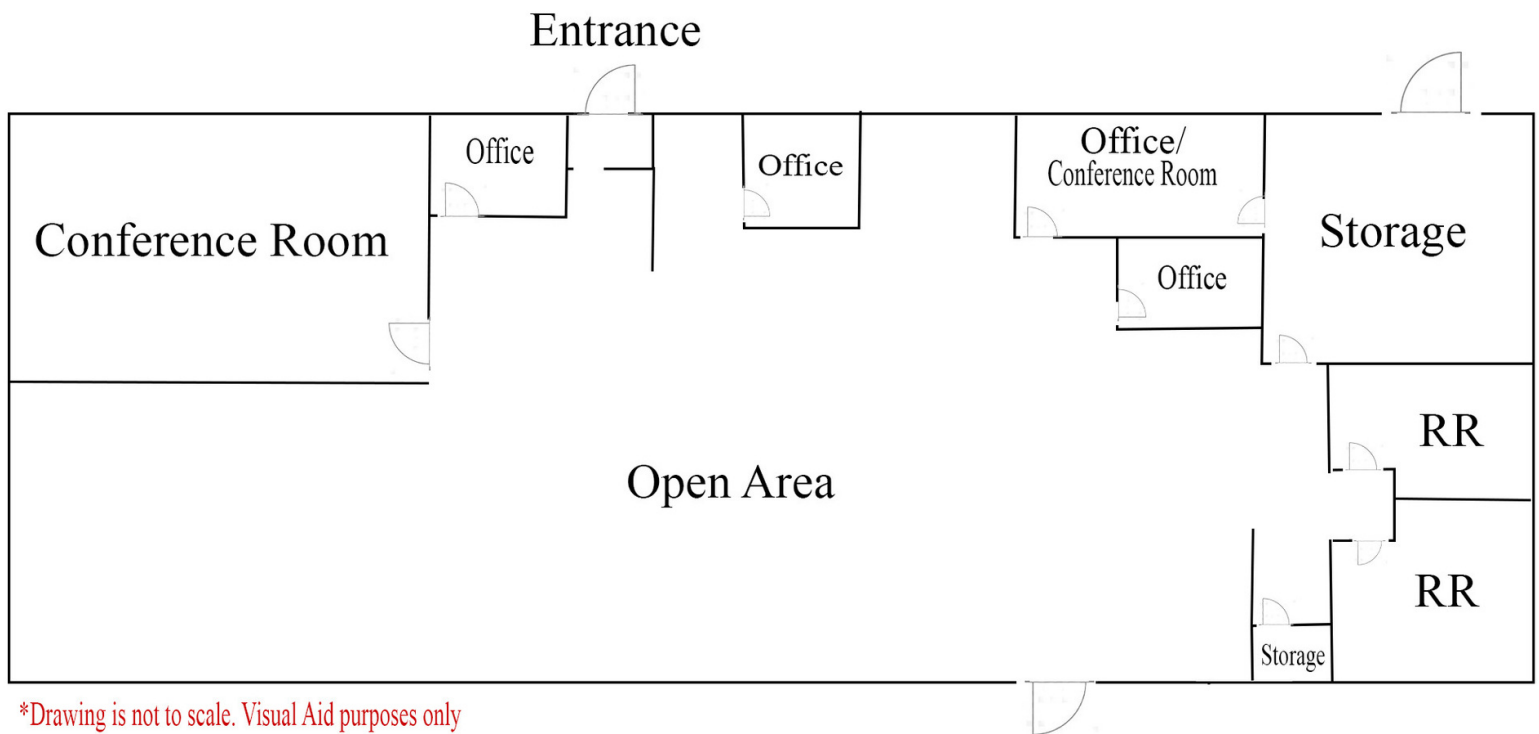
For More Information

Jessie Carreon

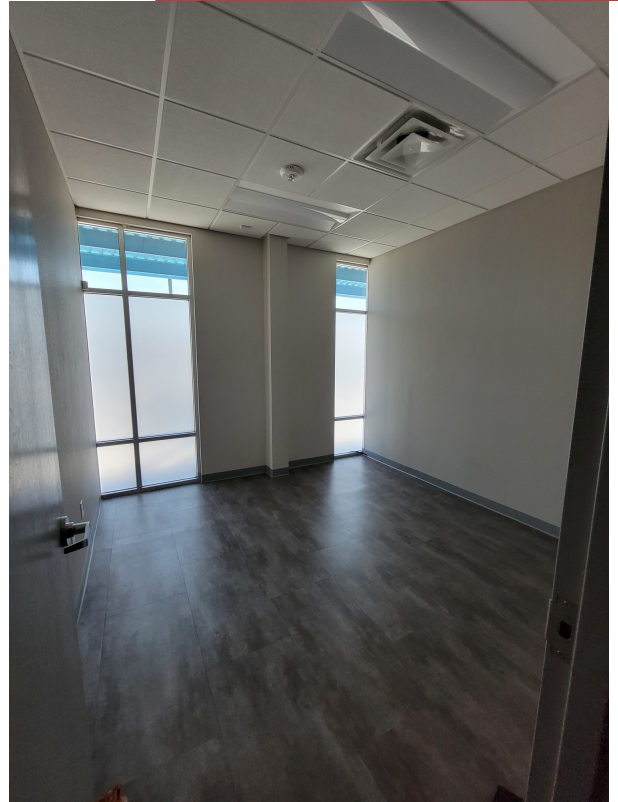
O: 575 521 1535
Jessie@1stvalley.com

Jake Redfearn

O: 575 521 1535
jake@1stvalley.com



*Drawing is not to scale. Visual Aid purposes only





We obtained the information above from sources we believe to be reliable. However, we have not verified its accuracy and make no guarantee, warranty or representation about it. It is submitted subject to the possibility of errors, omissions, change of price, rental or other conditions, prior sale, lease or financing, or withdrawal without notice. We include projections, opinions, assumptions or estimates for example only, and they may not represent current or future performance of the property. You and your tax and legal advisors should conduct your own investigation of the property and transaction.

1155 South Telshor Blvd
Las Cruces, NM 88011
575 521 1535 tel
1stvalley.com