

# FOR SALE

## Ranch Land Available

AVAILABLE

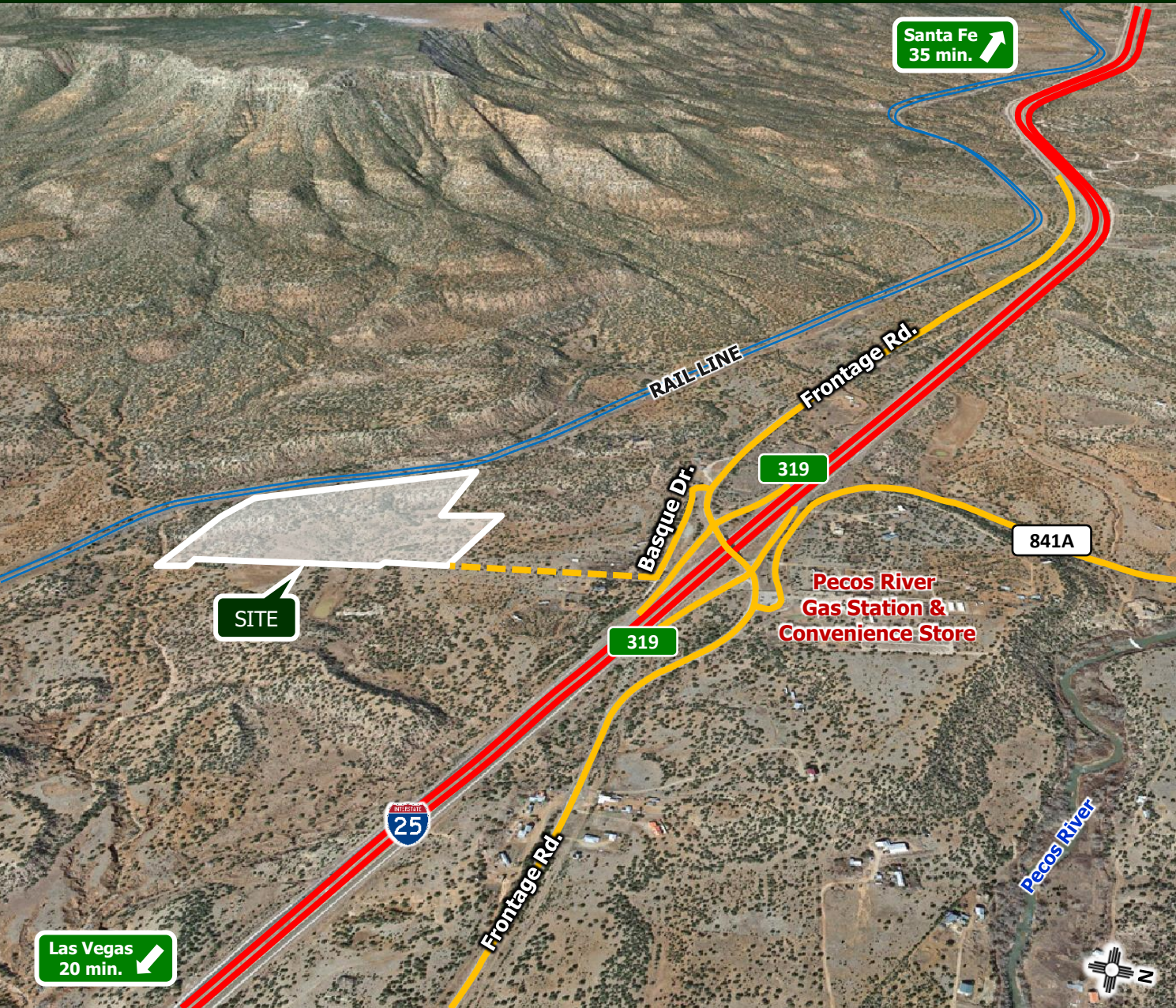
±35.71 Ac.

SALE PRICE

\$198,500

HIGHLIGHTS

- Land with beautiful and unobstructed views
- Owner financing available with small down payment
- Very private with great building sites
- Easy access off I-25
- Located in San Miguel County
- Close proximity to Pecos River
- Good for cultivation or small scale organic farming
- Dramatic views at the base of the Row Mesa



I-25 & Exit 319 San Jose, NM 87565

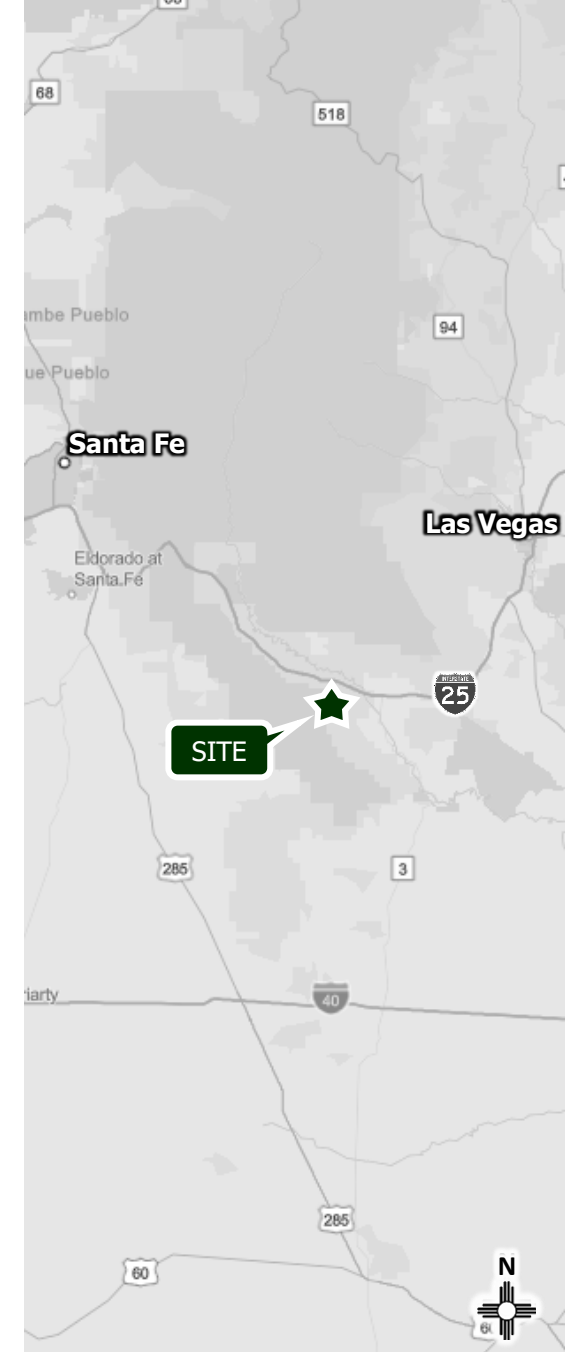
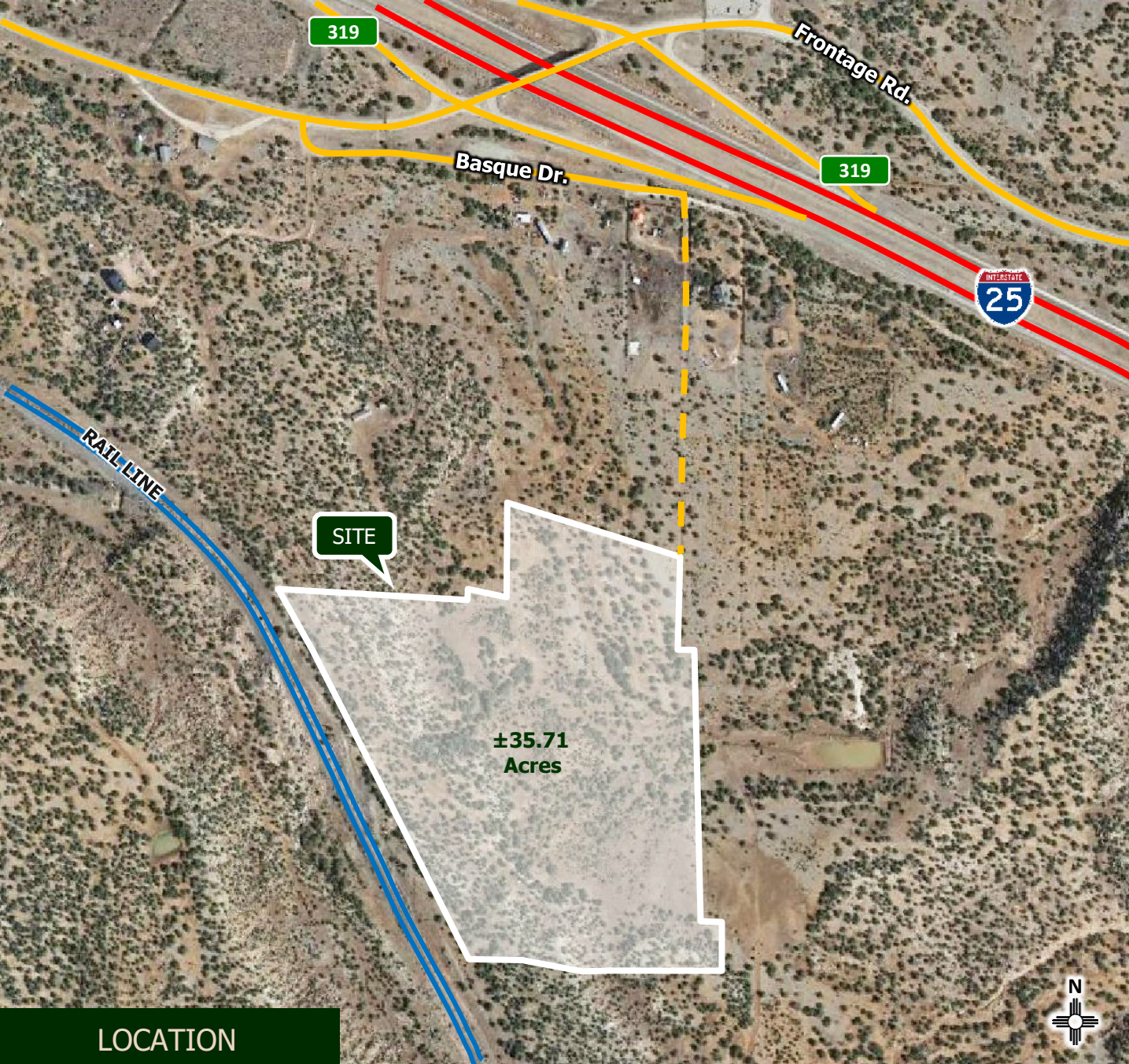


505.473.3434 | [www.garsagroup.com](http://www.garsagroup.com)  
418 Cerrillos Rd. | Suite 11 | Santa Fe, NM 87501

Carlos Garcia  
505.670.3181/Owner Broker  
[carlos@garsagroup.com](mailto:carlos@garsagroup.com)

Joel Cumplido  
505.670.3328  
[joel@garsagroup.com](mailto:joel@garsagroup.com)





LOCATION

**FOR SALE**

Ranch Land Available  
I-25 & Exit 319 San Jose, NM 87565

Carlos Garcia  
505.670.3181/Owner Broker  
carlos@garsagroup.com

Joel Cumplido  
505.670.3328  
joel@garsagroup.com





PHOTOS

**FOR SALE**

Ranch Land Available  
I-25 & Exit 319 San Jose, NM 87565

Carlos Garcia  
505.670.3181/Owner Broker  
carlos@garsagroup.com

Joel Cumplido  
505.670.3328  
joel@garsagroup.com

