

For Lease

Small Uptown Suites Available

IDEAL FOR SMALL BUSINESSES



**±350 - 820 SF
Available**

1803 Louisiana Blvd. NE | Albuquerque, NM 87110

NAI SunVista] **Got Space™**

Danaë Fernández

danae@sunvista.com | 505 604 8766

Micah Gray

micah@sunvista.com | 505 338 9878

For Lease

SMALL UPTOWN SUITES AVAILABLE

1803 Louisiana Blvd. NE | Albuquerque, NM 87110



PROPERTY

AVAILABLE

Suite A-2-A: ±520 SF \$700/Mo.

Suite A-2-B: ±350 SF \$550/Mo.

Suite D-1: ±820 SF \$1,025/Mo.

(Tenant pays gas & electric)

HIGHLIGHTS

- Private offices with in-suite restrooms
- Windows for natural light
- Prime Uptown location with great foot traffic
- Walking distance to Jerry Cline Park
- Minutes from ABQ Uptown
- Just one minute to I-40
- Building signage available
- Minutes from ABQ Uptown shopping & multiple restaurants to satisfy any appetite
- Perfect for small business user

IDO ZONING

- [MX-M](#)

LOCATION

NWC Louisiana Blvd. & Constitution Ave. NE

For Lease

SMALL UPTOWN SUITES AVAILABLE

1803 Louisiana Blvd. NE | Albuquerque, NM 87110



LOCATION

Demographics	1 mile	3 mile	5 mile
Total Population	13,454	137,431	291,946
Average HH Income	\$69,828	\$79,244	\$83,864
Daytime Employment	15,448	81,252	213,047

2024 Forecasted by Esri



NAI SunVista

505 878 0001 | sunvista.com | [f](https://www.facebook.com/sunvista) [i](https://www.instagram.com/sunvista) [in](https://www.linkedin.com/company/sunvista) [y](https://www.youtube.com/channel/UCqj8K8K8K8K8K8K8K8K8K8K)
2424 Louisiana Blvd. NE | Suite 100 | Albuquerque, NM 87110

Danaë Fernández
danae@sunvista.com
505 604 8766

Micah Gray
micah@sunvista.com
505 338 9878

For Lease

SMALL UPTOWN SUITES AVAILABLE

1803 Louisiana Blvd. NE | Albuquerque, NM 87110



NAI SunVista

505 878 0001 | sunvista.com | [f](#) [t](#) [in](#) [u](#)
2424 Louisiana Blvd. NE | Suite 100 | Albuquerque, NM 87110

Danaë Fernández
danae@sunvista.com
505 604 8766

Micah Gray
micah@sunvista.com
505 338 9878

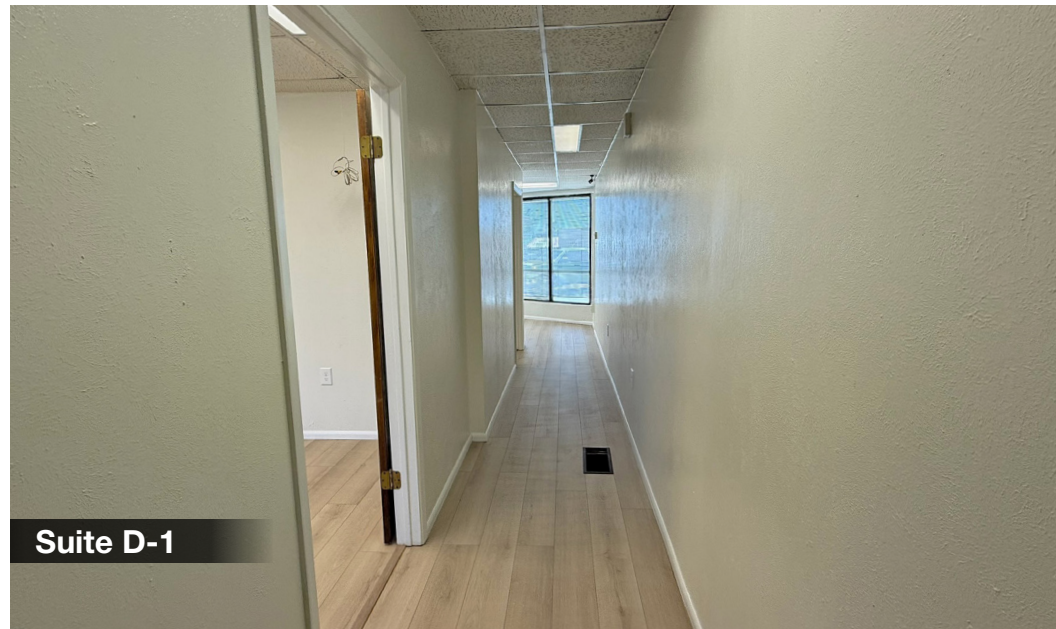
For Lease

SMALL UPTOWN SUITES AVAILABLE

1803 Louisiana Blvd. NE | Albuquerque, NM 87110



Suite D-1



Suite D-1



Suite D-1



Suite D-1

For Lease

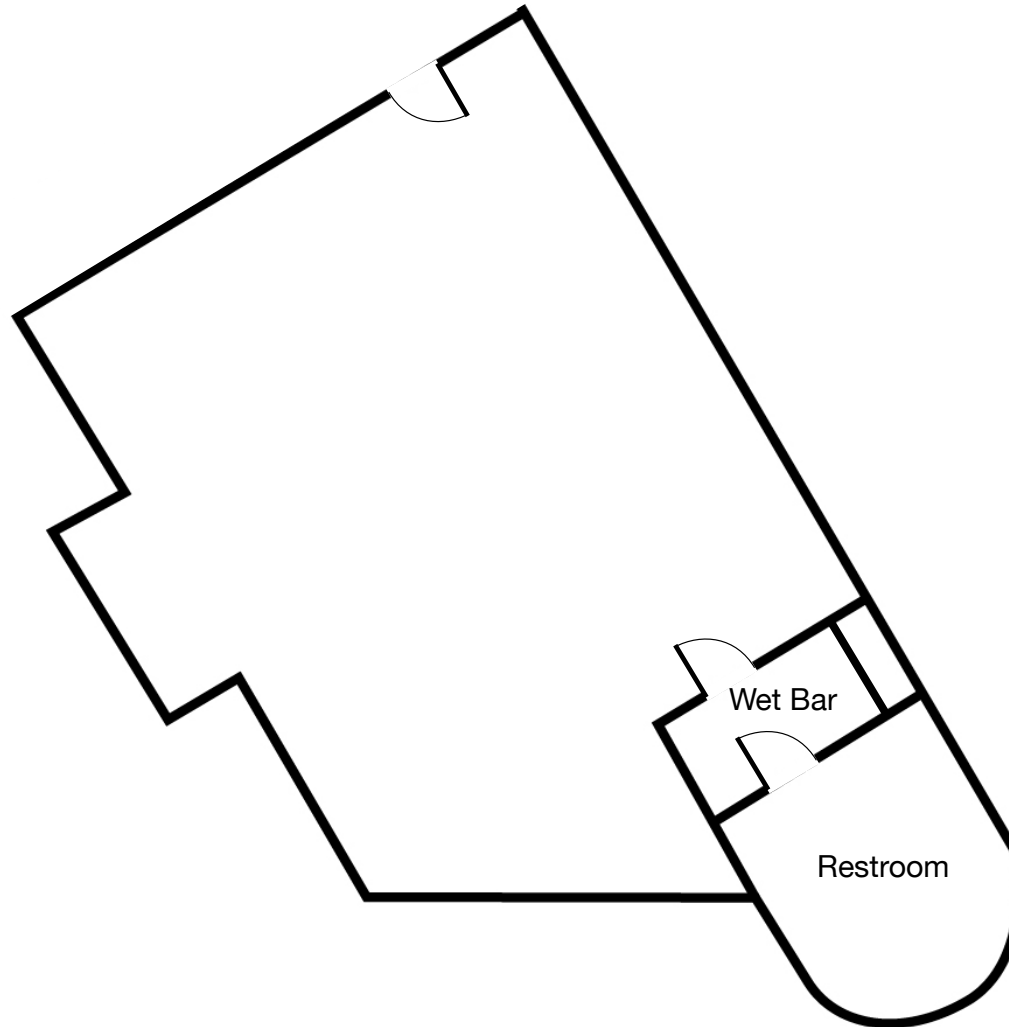
SMALL UPTOWN SUITES AVAILABLE

1803 Louisiana Blvd. NE | Albuquerque, NM 87110

FLOOR PLAN

Suite A-2-A: ±820 SF

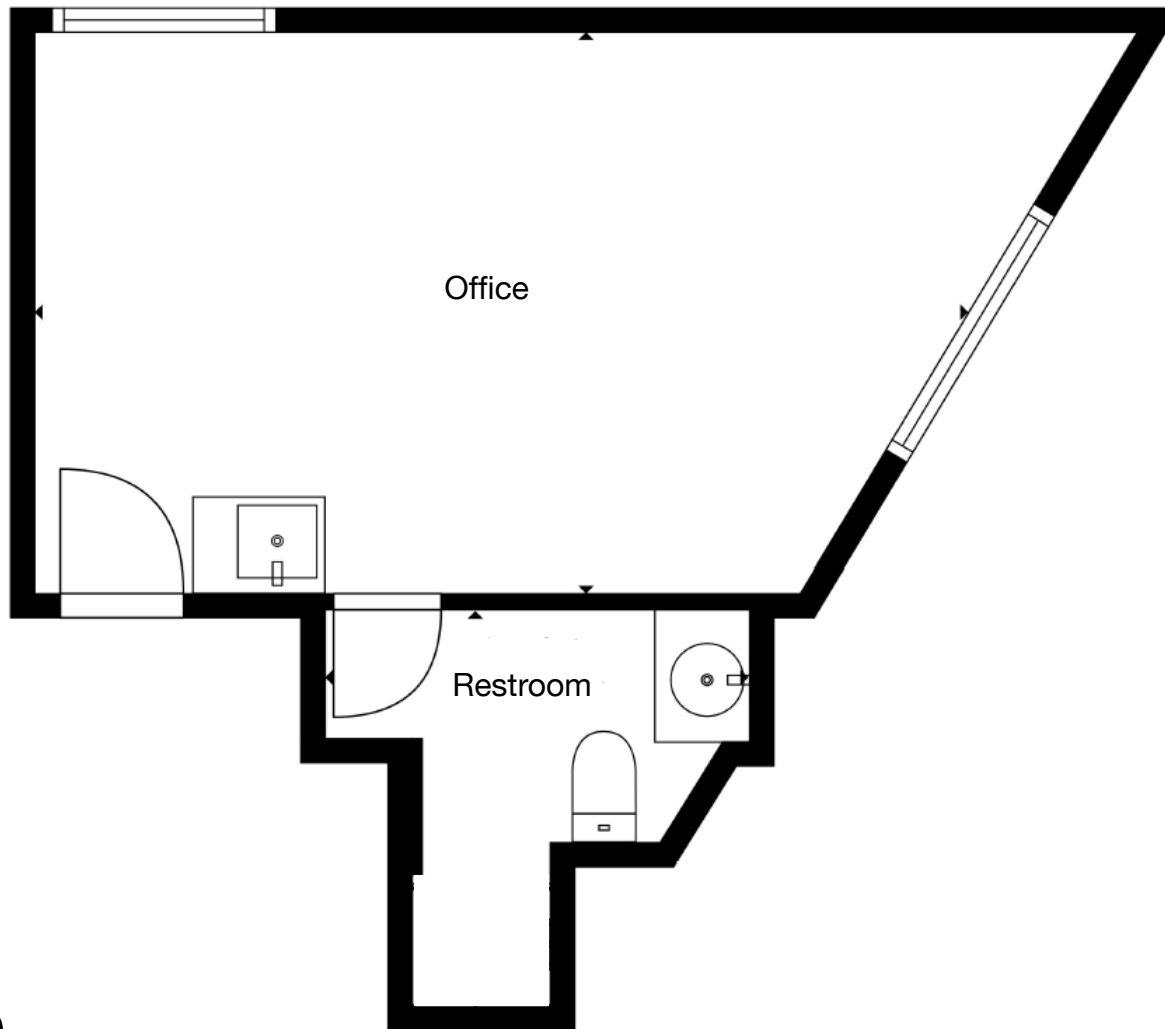
**Floor plan not to scale*



For Lease

SMALL UPTOWN SUITES AVAILABLE

1803 Louisiana Blvd. NE | Albuquerque, NM 87110



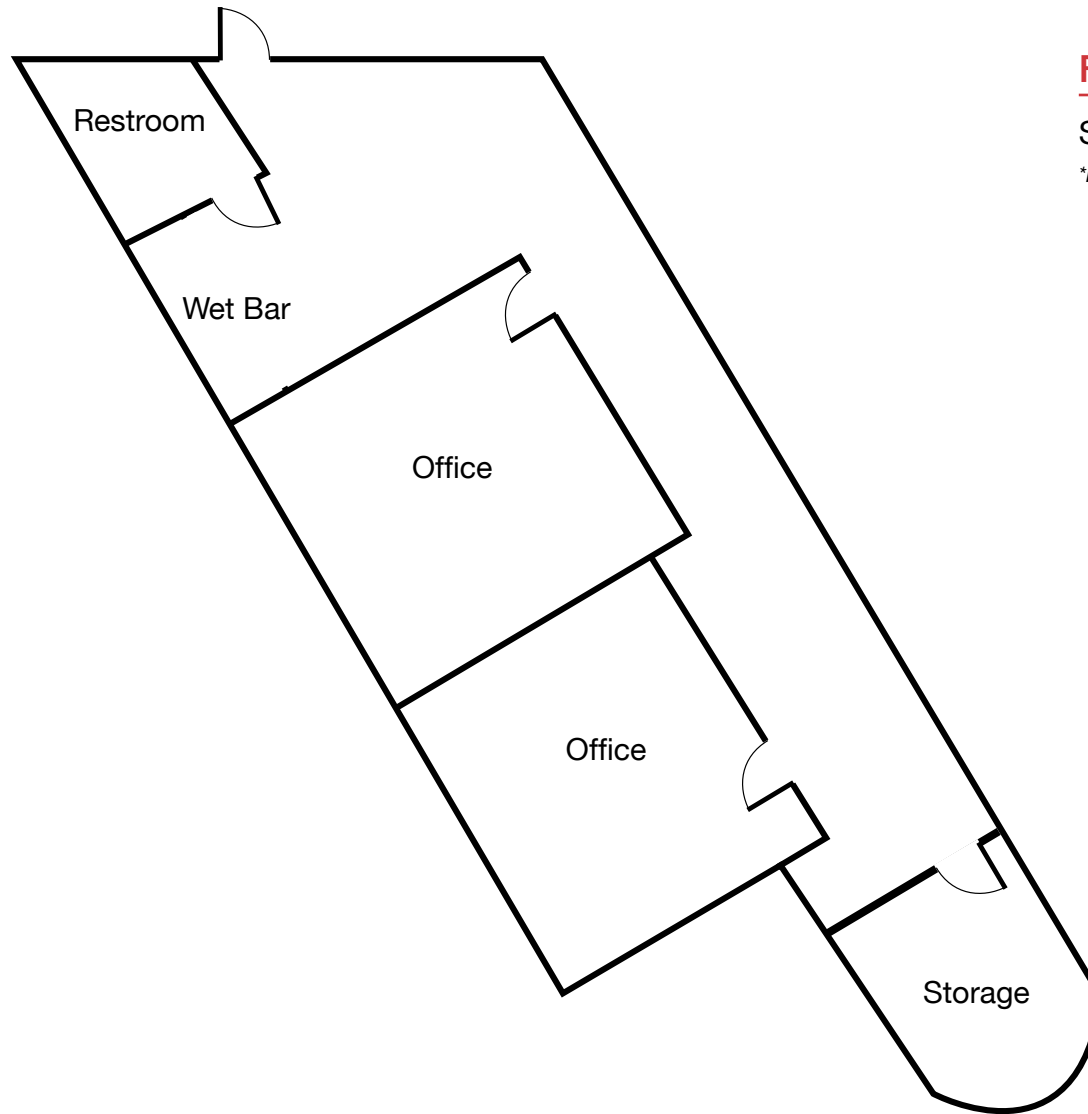
FLOOR PLAN

Suite A-2-B: ±350 SF

For Lease

SMALL UPTOWN SUITES AVAILABLE

1803 Louisiana Blvd. NE | Albuquerque, NM 87110



FLOOR PLAN

Suite D-1: ±820 SF

**Floor plan not to scale*

